

2022 First Extraordinary Session

HOUSE BILL NO. 2

BY REPRESENTATIVE STEFANSKI

REAPPORTIONMENT/PSC: Provides relative to election districts for members of the Public Service Commission (Item #5)

1 AN ACT

2 To enact R.S. 45:1161.4 and to repeal R.S. 45:1161.5, relative to redistricting; to provide for
3 election districts for the Public Service Commission; to provide for election of
4 commissioners; to provide for effectiveness; and to provide for related matters.

5 Be it enacted by the Legislature of Louisiana:

6 Section 1. R.S. 45:1161.4 is hereby enacted to read as follows:

7 §1161.4. Public Service Commission districts

8 A. The state shall be divided into the following five Public Service
9 Commission districts, and one commissioner shall be elected from each district:

- 10 (1) District 1 is composed of Precincts 1, 2, 3, 4, 5, 7, 8, 9, 10, 11, 12, 13, 14,
- 11 15, 16, 17, 18, 19, 20, 21, 22, 23, 24, 25, 26, 27, 28, 29, 30, 31, 32, 33, 34, 35, 36, 37,
- 12 38, 39, 40, 41, 42, 43, 44, 45, 46, 51, 52, 53, 54, 55, 56, 58, 59, 60, 61, 62, 63, 64, 65,
- 13 66, 67, 68, 69, 70, 71, 72, 73, 74, 75, 76, 77, 78, 79, 80, 81, 82, 83, 84, 85, 86, 87, 88,
- 14 89, 90, 91, 92, 93, 94, 95, 96, 97, 98, 99, 100, 101, 102, 103, 105, 106, 116, 117, 118,
- 15 119, 120, 121, 122, 123, 124, 125A, 125B, 126, 127, 128, 129, 130, 131, 132, 133,
- 16 134, 136, 138, 175, 176, 177, 178, 182, 183, 184, 185A, 185B, 189, 190, 192, 193A,
- 17 193B, 194A, 194B, 198, 199, 202, 203, 204, 226, 227, 228, 229, 230, 234, 235, 236,
- 18 238A, 238B, 246, 247, 248, 1-GI, 1-H, 2-H, 3-H, 4-H, 5-H, 6-H, 7-H, 8-H, 9-H, 1-K,
- 19 2-K, 3-K, 4-K, 5-K, 6-KA, 6-KB, 7-KA, 7-KB, 8-K, 9-K, 10-K, 11-K, 12-K, 13-KA,
- 20 14-K, 15-K, 16-K, 17-K, 18-K, 19-K, 20-K, 25-K, 27-K, 28-K, 29-K, 34-K, 35-K,

1 and 1-L of Jefferson Parish; Precincts 5A, 6, 6A, 6B, 7, 8A, 8B, 9, 10, 11, 11A, 12,
 2 13A, 13B, 14, 15, 16, 17, 18, 18A, 19, 19A, 20, 21, 21A, 22, 29, 30, 31, 32, 33, 34,
 3 38, and 43 of Livingston Parish; Precincts 4-9, 4-11, 4-14, 4-15, 4-17, 4-17A, 4-18,
 4 4-20, 4-21, 4-22, 4-23, 5-17, 5-18, 7-41, 7-42, 9-45A, 14-1, 14-2, 14-3, 14-4, 14-5,
 5 14-6, 14-7, 14-8, 14-9, 14-10, 14-12, 14-13A, 14-14, 14-15, 14-16, 14-17, 14-18A,
 6 14-19, 14-20, 14-21, 16-1, 16-1A, 17-1, 17-17, 17-18, 17-18A, 17-19, and 17-20 of
 7 Orleans Parish; Plaquemines Parish; St. Bernard Parish; Precincts 2-5, 4-1, 4-2, 4-3,
 8 7-2, and 7-3 of St. Charles Parish; St. Helena Parish; St. Tammany Parish;
 9 Tangipahoa Parish; and Washington Parish.

10 (2) District 2 is composed of Precincts 2, 3, 4, 5, 10, 12, 13, 14, 15, 18, 21,
 11 22, 25, 26, 27, 33, 34, 35, 41, 43, 61, and 76 of Ascension Parish; Assumption
 12 Parish; Precincts 1-7, 1-8, 1-9, 1-12, 1-33, 1-34, 1-35, 1-39, 1-40, 1-41, 1-42, 1-43,
 13 1-44, 1-47, 1-48, 1-49, 1-52, 1-53, 1-56, 1-57, 1-60, 1-64, 1-65, 1-69, 1-72, 1-74,
 14 1-75, 1-79, 1-80, 1-89, 1-90, 1-98, 1-99, 1-103, 1-105, 2-6, 2-7, 2-8, 2-18, 2-21, 2-26,
 15 2-29, 2-33, 2-34, 2-35, 2-36, 3-1, 3-2, 3-3, 3-4, 3-6, 3-7, 3-9, 3-10, 3-11, 3-13, 3-14,
 16 3-15, 3-16, 3-17, 3-18, 3-19, 3-21, 3-22, 3-25, 3-26, 3-27, 3-29, 3-30, 3-31, 3-33,
 17 3-34, 3-35, 3-36, 3-37, 3-38, 3-39, 3-40, 3-41, 3-43, 3-45, 3-46, 3-47, 3-48, 3-49,
 18 3-51, 3-52, 3-53, 3-58, 3-59, 3-60, 3-61, 3-62, 3-64, 3-66, 3-67, 3-68, and 3-71 of
 19 East Baton Rouge Parish; East Feliciana Parish; Precincts 4, 5, 25, 26, 27, 28, 29, 31,
 20 and 32 of Iberville Parish; Lafayette Parish; Lafourche Parish; Precincts 1, 1A, 1B,
 21 1C, 1D, 2, 2A, 3, 3A, 3B, 4, 4A, 4B, 5, 5B, 5C, 7A, 7B, 7C, 7D, 23, 23A, 23B, 23C,
 22 24, 24B, 24C, 25, 26, 26A, 26B, 26C, 27, 28A, 28B, 35, 35A, 36, 36A, 39, 39A,
 23 39B, 40, 40A, and 41 of Livingston Parish; Pointe Coupee Parish; Precincts 3, 4, 5,
 24 6, 7, 8, 9, 10, 11, 12, 13, 14, 15, 16, 17, 18, 19, 20, 21, 22, 23, 24, 25, 26, 27, 28, and
 25 29 of St. Martin Parish; Terrebonne Parish; Precincts 1A, 1B, 2A, 2B, 3, 4, 5, 7A,
 26 7B, 18, 19, 20, 21, and 22 of West Baton Rouge Parish; and West Feliciana Parish.

27 (3) District 3 is composed of Precincts 1, 6, 7, 8, 9, 11, 16, 17, 20, 23, 24, 28,
 28 30, 31, 32, 36, 37, 39, 40, 42, 44, 45, 47, 48, 50, 51, 52, 53, 54, 55, 57, 58, 62, 63, 64,
 29 65, 66, 71, 72, 73, 77, and 78 of Ascension Parish; Precincts 1-1, 1-2, 1-3, 1-4, 1-5,

1 1-6, 1-10, 1-11, 1-13, 1-14, 1-15, 1-16, 1-17, 1-18, 1-19, 1-20, 1-21, 1-22, 1-23, 1-24,
2 1-25, 1-26, 1-27, 1-28, 1-29, 1-30, 1-31, 1-32, 1-36, 1-37, 1-38, 1-45, 1-46, 1-50,
3 1-51, 1-54, 1-55, 1-58, 1-59, 1-61, 1-62, 1-63, 1-66, 1-67, 1-68, 1-70, 1-71, 1-73,
4 1-76, 1-77, 1-78, 1-81, 1-82, 1-83, 1-84, 1-85, 1-86, 1-87, 1-88, 1-91, 1-92, 1-93,
5 1-94, 1-95, 1-97, 1-100, 1-101, 1-102, 1-104, 1-107, 2-1, 2-2, 2-3, 2-4, 2-5, 2-9, 2-10,
6 2-11, 2-12, 2-13, 2-14, 2-15, 2-16, 2-17, 2-19, 2-20, 2-22, 2-23, 2-24, 2-25, 2-27,
7 2-28, 2-30, 2-31, 2-32, 2-37, 3-5, 3-8, 3-12, 3-20, 3-23, 3-24, 3-28, 3-32, 3-44, 3-50,
8 3-54, 3-55, 3-56, 3-57, 3-63, 3-65, 3-69, 3-70, and 3-72 of East Baton Rouge Parish;
9 Precincts 1, 3, 6, 7, 9, 10, 11, 12, 13, 13C, 14, 14A, 15, 15B, 16, 17, 18, 19, 20, 21,
10 22, 23, and 24 of Iberville Parish; Precincts 57, 104, 108, 115, 150, 151, 152, 153,
11 154, 155, 156, 157A, 157B, 170, 171, 172, 173, 174, 179A, 179B, 180, 181, 187,
12 188, 191, 195, 196, 197A, 197B, 200, 201, 205, 210, 211, 212, 213A, 213B, 213C,
13 214A, 214B, 215, 216A, 216B, 216C, 217, 225, 231, 232A, 232B, 237, 1-G, 2-G,
14 3-G, 4-G, 5-G, 6-G, 7-G, 8-G, 9-G, 10-G, 11-G, 12-G, 13-G, 13-KB, 21-K, 22-K,
15 23-K, 24-K, 26-K, 30-K, 31-K, 33-K, 1-W, 2-W, 3-W, 4-W, 5-W, 6-W, and 7-W of
16 Jefferson Parish; Precincts 1-1, 1-2, 1-5, 1-6, 2-1, 2-2, 2-4, 2-6, 2-7, 3-1, 3-8, 3-9,
17 3-12, 3-14, 3-15, 3-18, 3-19, 3-20, 4-2, 4-3, 4-5, 4-6, 4-7, 4-8, 5-1, 5-2, 5-3, 5-5, 5-7,
18 5-8, 5-9, 5-10, 5-11, 5-12, 5-13, 5-15, 5-16, 6-1, 6-2, 6-4, 6-6, 6-7, 6-8, 6-9, 7-1, 7-2,
19 7-4, 7-5, 7-6, 7-7, 7-8, 7-9A, 7-10, 7-11, 7-12, 7-13, 7-14, 7-15, 7-16, 7-17, 7-18,
20 7-19, 7-20, 7-21, 7-23, 7-24, 7-25, 7-25A, 7-26, 7-27, 7-27B, 7-28, 7-28A, 7-29,
21 7-30, 7-32, 7-33, 7-35, 7-37, 7-37A, 7-40, 8-1, 8-2, 8-4, 8-6, 8-7, 8-8, 8-9, 8-12,
22 8-13, 8-14, 8-15, 8-19, 8-20, 8-21, 8-22, 8-23, 8-24, 8-25, 8-26, 8-27, 8-28, 8-30, 9-1,
23 9-3, 9-4, 9-5, 9-6, 9-7, 9-8, 9-9, 9-10, 9-11, 9-12, 9-13, 9-14, 9-15, 9-16, 9-17, 9-19,
24 9-21, 9-23, 9-25, 9-26, 9-28, 9-28C, 9-29, 9-30, 9-30A, 9-31, 9-31A, 9-31B, 9-31D,
25 9-32, 9-33, 9-34A, 9-35, 9-35A, 9-36, 9-36B, 9-37, 9-38, 9-38A, 9-39, 9-39B, 9-40,
26 9-40A, 9-40C, 9-41, 9-41A, 9-41B, 9-41C, 9-41D, 9-42, 9-42C, 9-43A, 9-43B,
27 9-43C, 9-43E, 9-43F, 9-43G, 9-43H, 9-43I, 9-43J, 9-43K, 9-43L, 9-43M, 9-43N,
28 9-44, 9-44A, 9-44B, 9-44D, 9-44E, 9-44F, 9-44G, 9-44I, 9-44J, 9-44L, 9-44M,
29 9-44N, 9-44O, 9-44P, 9-44Q, 9-45, 10-3, 10-6, 10-7, 10-8, 10-9, 10-11, 10-12,

1 10-13, 10-14, 11-2, 11-3, 11-4, 11-5, 11-8, 11-9, 11-10, 11-11, 11-12, 11-13, 11-14,
2 11-17, 12-1, 12-2, 12-3, 12-4, 12-5, 12-6, 12-7, 12-8, 12-9, 12-10, 12-11, 12-12,
3 12-13, 12-14, 12-16, 12-17, 12-19, 13-1, 13-2, 13-3, 13-4, 13-5, 13-6, 13-7, 13-8,
4 13-9, 13-10, 13-11, 13-12, 13-13, 13-14, 13-15, 13-16, 14-11, 14-23, 14-24A, 14-25,
5 14-26, 15-1, 15-2, 15-3, 15-5, 15-6, 15-8, 15-9, 15-10, 15-11, 15-12, 15-12A, 15-13,
6 15-13A, 15-13B, 15-14, 15-14A, 15-14B, 15-14C, 15-14D, 15-14E, 15-14F, 15-14G,
7 15-15, 15-15A, 15-15B, 15-16, 15-17, 15-17A, 15-17B, 15-18, 15-18A, 15-18B,
8 15-18C, 15-18D, 15-18E, 15-18F, 15-19, 15-19A, 15-19B, 15-19C, 16-2, 16-3, 16-4,
9 16-5, 16-6, 16-7, 16-8, 16-9, 17-2, 17-3, 17-4, 17-5, 17-6, 17-7, 17-8, 17-9, 17-10,
10 17-11, 17-12, 17-13, 17-13A, 17-14, 17-15, and 17-16 of Orleans Parish; Precincts
11 1-1, 1-2, 1-3, 1-5, 1-6, 2-1, 2-2, 2-3, 2-4, 2-6, 3-1, 3-2, 3-3, 4-4, 5-1, 5-3, 5-4, 5-5,
12 6-1, 6-2, 6-4, 6-6, 6-7, 6-8, 7-1, and 7-4 of St. Charles Parish; St. James Parish;
13 St. John the Baptist Parish; and Precincts 1C, 6, 8, 9, 10A, 10B, 11A, 11B, 12, 13A,
14 13B, 14, 15, 16, and 17 of West Baton Rouge Parish.

15 (4) District 4 is composed of Acadia Parish; Allen Parish; Avoyelles Parish;
16 Beauregard Parish; Calcasieu Parish; Cameron Parish; Evangeline Parish; Grant
17 Parish; Iberia Parish; Jefferson Davis Parish; La Salle Parish; Rapides Parish;
18 St. Landry Parish; Precincts 1 and 2 of St. Martin Parish; St. Mary Parish; Vermilion
19 Parish; and Vernon Parish.

20 (5) District 5 is composed of Bienville Parish; Bossier Parish; Caddo Parish;
21 Caldwell Parish; Catahoula Parish; Claiborne Parish; Concordia Parish; De Soto
22 Parish; East Carroll Parish; Franklin Parish; Jackson Parish; Lincoln Parish; Madison
23 Parish; Morehouse Parish; Natchitoches Parish; Ouachita Parish; Red River Parish;
24 Richland Parish; Sabine Parish; Tensas Parish; Union Parish; Webster Parish; West
25 Carroll Parish; and Winn Parish.

26 B. Each commissioner in office on January 1, 2023, shall be the
27 commissioner for the district as composed in this Section having the same
28 designation as the district from which the commissioner was elected and shall
29 complete the term for which he was elected.

1 Section 2. R.S. 45:1161.5 is hereby repealed in its entirety.

2 Section 3.(A) The precincts referenced in this Act are those precincts identified as
3 Voting Districts (VTDs) in the 2020 Census Redistricting TIGER/Line Shapefiles for the
4 State of Louisiana as validated through the data verification program of the Louisiana House
5 of Representatives and the Louisiana Senate and available on the legislature's website on the
6 effective date of this Section.

7 (B) When a precinct referenced in this Act has been subdivided by action of the
8 parish governing authority on a nongeographic basis or subdivided by action of the parish
9 governing authority on a geographic basis in accordance with the provisions of R.S.
10 18:532.1, the enumeration in this Act of the general precinct designation shall include all
11 nongeographic and all geographic subdivisions thereof, however such subdivisions may be
12 designated.

13 (C) The territorial limits of the districts as provided in this Act shall continue in
14 effect until changed by law regardless of any subsequent change made to the precincts by
15 the parish governing authority.

16 Section 4.(A)(1) Solely for the purposes of qualifying for election and the election
17 of members of the Public Service Commission from Districts 3 and 4 at the regularly
18 scheduled election for such offices in 2022, the provisions of Section 1 of this Act shall
19 become effective upon signature of this Act by the governor or, if not signed by the
20 governor, upon expiration of the time for bills to become law without signature by the
21 governor, as provided in Article III, Section 18 of the Constitution of Louisiana.

22 (2) Solely for the purposes of qualifying for any special election and any special
23 election of members of the Public Service Commission to fill a vacancy in such an office
24 occurring between the effective date of this Section and January 1, 2023, the provisions of
25 Section 1 of this Act shall become effective upon signature of this Act by the governor or,
26 if not signed by the governor, upon expiration of the time for bills to become law without
27 signature by the governor, as provided in Article III, Section 18 of the Constitution of
28 Louisiana. Any person elected to fill such a vacancy shall be the commissioner for the
29 district as composed in R.S. 45:1161.5 having the same designation as the district from

1 which the commissioner's predecessor was elected until January 1, 2023, after which time
2 the commissioner shall be the commissioner for the district as provided in Section 1 of this
3 Act.

4 (3) If this Act is vetoed by the governor and subsequently approved by the
5 legislature, the provisions of Section 1 of this Act shall become effective on the day
6 following such approval for the purposes established in this Subsection.

7 (B) For subsequent elections of members of the Public Service Commission and for
8 all other purposes, the provisions of Section 1 of this Act shall become effective on
9 January 1, 2023.

10 (C) The provisions of Section 2 of this Act shall become effective on January 1,
11 2023.

12 (D) The provisions of this Section and Section 3 of this Act shall become effective
13 upon signature of this Act by the governor or, if not signed by the governor, upon expiration
14 of the time for bills to become law without signature by the governor, as provided in Article
15 III, Section 18 of the Constitution of Louisiana. If this Act is vetoed by the governor and
16 subsequently approved by the legislature, the provisions of this Section and Section 3 of this
17 Act shall become effective on the day following such approval.

DIGEST

The digest printed below was prepared by House Legislative Services. It constitutes no part of the legislative instrument. The keyword, one-liner, abstract, and digest do not constitute part of the law or proof or indicia of legislative intent. [R.S. 1:13(B) and 24:177(E)]

HB 2 Engrossed

2022 First Extraordinary Session

Stefanski

Abstract: Provides for the redistricting of the Public Service Commission (PSC) and provides for the composition of each of the 5 PSC districts. Effective for election purposes for the regular PSC District 3 and 4 elections and specified vacancy elections in 2022 and for all purposes on Jan. 1, 2023.

Statistical summaries of proposed law, including district variances from the ideal population of 931,551 and the range of those variances, as well as maps illustrating proposed district boundaries accompany this digest. (*Attached to the bill version available on the internet.*)

Present constitution (Const. Art. IV, §21) creates the PSC consisting of five members elected for overlapping six-year terms from single member districts.

Proposed law redraws district boundaries for the five PSC districts, effective upon signature of governor or lapse of time for gubernatorial action for purposes of the 2022 election of commissioners from PSC Districts 3 and 4 and specified vacancy elections.

Proposed law retains present districts until Jan. 1, 2023, at which time present law is repealed and proposed districts are effective for all other purposes.

Proposed law specifies that precincts referenced in district descriptions are those precincts identified as Voting Districts (VTDs) in the 2020 Census Redistricting TIGER/Line Shapefiles for the state of La. as validated through the data verification program of the La. legislature. Also specifies that if any such precinct has been subdivided by action of the parish governing authority on a nongeographic basis or subdivided by action of the parish governing authority on a geographic basis in accordance with present law, the enumeration of the general precinct designation shall include all nongeographic and all geographic subdivisions thereof. Further provides that the territorial limits of the districts as enacted shall continue in effect until changed by law regardless of any changes made to the precincts by the parish governing authority.

Population data in the summaries accompanying this digest are derived from the 2020 Census Redistricting Data (Public Law 94-171), Summary File for Louisiana. Population data, statistical information, and maps are supplied for purposes of information and analysis and comprise no part of proposed law.

Effective for election purposes only for PSC Districts 3 and 4 elections in 2022 and specified vacancy elections; effective for other purposes Jan. 1, 2023.

(Adds R.S. 45:1161.4; Repeals R.S. 45:1161.5)

Plan Statistics

Plan: HB2 Engrossed (Stefanski) 221ES-13

<u>Districts:</u>	<u># of Members</u>	<u>Actual Population</u>	<u>Ideal Population</u>	<u>Absolute Deviation</u>	<u>Relative Deviation</u>
District 1	1	931,776	931,551	225	0.024%
District 2	1	955,970	931,551	24,419	2.621%
District 3	1	932,577	931,551	1,026	0.110%
District 4	1	919,905	931,551	-11,646	-1.250%
District 5	1	917,529	931,551	-14,022	-1.505%
Grand Total:	5	4,657,757	4,657,755		

Ideal Population Per Member:	931551	
Number of Districts for Plan Type:	5	
Range of District Populations:	917,529	to 955,970
Absolute Mean Deviation:	7,688	
Absolute Range:	-14,022	to 24,419
Absolute Overall Range:	38,441	
Relative Mean Deviation:	1.10%	
Relative Range:	-1.51%	to 2.62%
Relative Overall Range:	4.13%	

<i>Ideal - Actual:</i>	-2
<i>Remainder:</i>	2
<i>Unassigned Population:</i>	0

Total Population

Plan: HB2 Engrossed (Stefanski) 221ES-13

	Total Population	Total White	Total Black	Total Asian	Total American Indian	Total Other	Total Hispanic	VAP Total	VAP White	VAP Black	VAP Asian	VAP American Indian	VAP Other	VAP Hispanic Total
District 1	931,776	626,707	174,667	28,686	18,267	83,449	103,907	720,642	502,668	123,687	21,211	13,611	59,465	72,961
	100.000%	67.259%	18.746%	3.079%	1.960%	8.956%	11.151%	100.000%	69.753%	17.163%	2.943%	1.889%	8.252%	10.124%
District 2	955,970	647,099	213,521	21,256	23,727	50,367	58,699	732,318	514,124	151,549	15,340	16,708	34,597	39,468
	100.000%	67.690%	22.336%	2.224%	2.482%	5.269%	6.140%	100.000%	70.205%	20.694%	2.095%	2.282%	4.724%	5.389%
District 3	932,577	280,924	551,631	28,545	9,380	62,097	78,817	720,084	237,073	409,109	22,686	7,264	43,952	54,983
	100.000%	30.123%	59.151%	3.061%	1.006%	6.659%	8.452%	100.000%	32.923%	56.814%	3.150%	1.009%	6.104%	7.636%
District 4	919,905	604,567	246,430	15,673	17,177	36,058	44,880	694,923	471,155	173,934	11,454	12,577	25,803	31,364
	100.000%	65.721%	26.789%	1.704%	1.867%	3.920%	4.879%	100.000%	67.800%	25.029%	1.648%	1.810%	3.713%	4.513%
District 5	917,529	498,355	356,870	13,128	18,509	30,667	36,246	702,581	399,491	257,490	9,725	14,080	21,795	24,886
	100.000%	54.315%	38.895%	1.431%	2.017%	3.342%	3.950%	100.000%	56.860%	36.649%	1.384%	2.004%	3.102%	3.542%
Grand Total	4,657,757	2,657,652	1,543,119	107,288	87,060	262,638	322,549	3,570,548	2,124,511	1,115,769	80,416	64,240	185,612	223,662
	100.000%	57.059%	33.130%	2.303%	1.869%	5.639%	6.925%	100.000%	59.501%	31.249%	2.252%	1.799%	5.198%	6.264%

Voter Registration

Plan: HB2 Engrossed (Stefanski) 221ES-13

	Reg Total Dec 2021	Reg White Dec 2021	Reg Black Dec 2021	Reg Other Dec 2021	Reg Dem Total Dec 2021	Reg Rep Total Dec 2021	Reg Other Total Dec 2021
District 1	584,338	447,502	89,327	47,509	176,938	235,054	172,346
	81.086%	76.583%	15.287%	8.130%	30.280%	40.226%	29.494%
District 2	598,991	450,177	118,371	30,443	191,435	244,199	163,357
	81.794%	75.156%	19.762%	5.082%	31.960%	40.768%	27.272%
District 3	584,475	193,246	348,164	43,065	357,322	81,829	145,324
	81.168%	33.063%	59.569%	7.368%	61.136%	14.000%	24.864%
District 4	554,161	396,265	136,575	21,321	205,891	203,695	144,575
	79.744%	71.507%	24.645%	3.847%	37.154%	36.757%	26.089%
District 5	572,381	340,799	210,311	21,271	229,418	204,003	138,960
	81.468%	59.541%	36.743%	3.716%	40.081%	35.641%	24.278%
Grand Total	2,894,346	1,827,989	902,748	163,609	1,161,004	968,780	764,562

Splits

Plan: HB2 Engrossed (Stefanski) 221ES-13

	Total Population	Total White	Total Black	Total Asian	Total American Indian	Total Other	VAP Total	VAP White	VAP Black	VAP Asian	VAP American Indian	VAP Other	Reg Total Dec 2021	Reg White Dec 2021	Reg Black Dec 2021	Reg Other Dec 2021
District 1																
*Jefferson	299,213	183,541	48,246	15,910	5,771	45,745	237,783	152,959	35,332	12,074	4,367	33,051	181,929	135,051	22,587	24,291
*Livingston	50,865	43,541	3,673	403	1,032	2,216	38,281	33,291	2,470	249	769	1,502	31,020	28,520	1,597	903
*Orleans	47,371	37,804	3,783	1,975	520	3,289	38,795	31,191	3,216	1,508	413	2,467	32,236	27,419	1,535	3,282
Plaquemines	23,515	14,287	5,428	1,317	697	1,786	17,334	10,856	3,857	925	500	1,196	13,908	9,513	3,134	1,261
St. Bernard	43,764	24,497	12,309	1,381	947	4,630	31,775	18,992	7,944	982	688	3,169	25,653	18,233	5,497	1,923
*St. Charles	12,938	10,590	1,241	197	316	594	9,541	8,005	787	116	216	417	8,649	7,667	643	339
St. Helena	10,920	4,527	6,031	39	134	189	8,463	3,805	4,371	28	109	150	8,321	3,628	4,565	128
St. Tammany	264,570	196,641	38,643	5,774	5,660	17,852	202,228	154,621	26,761	4,075	4,161	12,610	178,779	145,724	21,142	11,913
Tangipahoa	133,157	81,336	41,879	1,474	2,454	6,014	101,491	65,205	29,217	1,100	1,827	4,142	76,256	52,912	20,525	2,819
Washington	45,463	29,943	13,434	216	736	1,134	34,951	23,743	9,732	154	561	761	27,587	18,835	8,102	650
District 1	931,776	626,707	174,667	28,686	18,267	83,449	720,642	502,668	123,687	21,211	13,611	59,465	584,338	447,502	89,327	47,509
	100.000%	67.259%	18.746%	3.079%	1.960%	8.956%	100.000%	69.753%	17.163%	2.943%	1.889%	8.252%	81.086%	76.583%	15.287%	8.130%
District 2																
*Ascension	49,195	39,405	5,123	642	887	3,138	35,774	29,489	3,254	388	617	2,026	31,353	27,541	2,413	1,399
Assumption	21,039	13,722	6,220	96	258	743	16,616	11,145	4,707	57	197	510	14,439	9,700	4,510	229
*East Baton Rouge	216,816	143,835	48,292	8,909	2,967	12,813	171,296	118,212	34,855	6,634	2,346	9,249	141,187	106,792	25,433	8,962
East Feliciana	19,539	11,516	7,341	91	262	329	16,183	9,740	5,918	61	198	266	13,600	7,959	5,186	455
*Iberville	7,040	5,021	1,769	21	96	133	5,718	4,123	1,398	16	79	102	5,369	3,770	1,504	95
Lafayette	241,753	153,363	65,136	6,454	3,210	13,590	183,875	121,608	45,917	4,664	2,387	9,299	153,493	108,645	36,481	8,367
Lafourche	97,557	71,710	15,855	1,025	4,224	4,743	74,619	56,838	11,077	738	2,777	3,189	58,278	48,467	7,164	2,647
*Livingston	91,417	73,314	8,985	1,294	2,079	5,745	66,860	55,141	5,666	850	1,542	3,661	53,548	47,542	3,828	2,178
Pointe Coupee	20,758	12,395	7,504	107	159	593	16,250	10,108	5,502	91	119	430	14,675	9,320	5,121	234
*St. Martin	50,399	31,974	15,908	590	505	1,422	38,250	25,187	11,282	402	383	996	34,127	22,955	10,380	792
Terrebonne	109,580	69,934	23,147	1,743	8,637	6,119	82,505	55,631	15,796	1,239	5,750	4,089	61,720	45,395	11,566	4,759
*West Baton Rouge	15,567	10,027	4,501	195	218	626	11,589	7,619	3,226	144	139	461	9,795	6,999	2,605	191
West Feliciana	15,310	10,883	3,740	89	225	373	12,783	9,283	2,951	56	174	319	7,407	5,092	2,180	135
District 2	955,970	647,099	213,521	21,256	23,727	50,367	732,318	514,124	151,549	15,340	16,708	34,597	598,991	450,177	118,371	30,443
	100.000%	67.690%	22.336%	2.224%	2.482%	5.269%	100.000%	70.205%	20.694%	2.095%	2.282%	4.724%	81.794%	75.156%	19.762%	5.082%
District 3																
*Ascension	77,305	41,736	27,093	1,658	1,117	5,701	56,183	31,647	18,885	1,126	773	3,752	48,564	29,259	16,401	2,904
*East Baton Rouge	239,965	52,234	165,106	7,516	1,760	13,349	184,316	45,669	121,935	5,965	1,401	9,346	138,077	31,440	99,242	7,395
*Iberville	23,201	9,812	11,961	181	178	1,069	18,368	8,339	8,834	133	142	920	15,093	6,362	8,393	338
*Jefferson	141,568	37,394	77,971	7,114	1,915	17,174	106,871	31,176	56,843	5,618	1,468	11,766	81,172	24,565	46,989	9,618
*Orleans	336,626	88,658	215,186	10,881	3,146	18,755	267,401	79,061	162,852	9,012	2,535	13,941	224,008	64,567	139,990	19,451
*St. Charles	39,611	22,960	12,687	640	609	2,715	30,000	18,149	9,103	413	451	1,884	26,336	16,642	8,154	1,540

Splits

Plan: HB2 Engrossed (Stefanski) 221ES-13

	Total Population	Total White	Total Black	Total Asian	Total American Indian	Total Other	VAP Total	VAP White	VAP Black	VAP Asian	VAP American Indian	VAP Other	Reg Total Dec 2021	Reg White Dec 2021	Reg Black Dec 2021	Reg Other Dec 2021
District 3																
St. James	20,192	9,973	9,762	60	82	315	15,505	7,883	7,297	31	64	230	14,966	7,254	7,501	211
St. John the Baptist	42,477	13,877	25,196	403	465	2,536	32,503	11,622	18,437	323	350	1,771	28,913	10,219	17,234	1,460
*West Baton Rouge	11,632	4,280	6,669	92	108	483	8,937	3,527	4,923	65	80	342	7,346	2,938	4,260	148
District 3	932,577	280,924	551,631	28,545	9,380	62,097	720,084	237,073	409,109	22,686	7,264	43,952	584,475	193,246	348,164	43,065
	100.000%	30.123%	59.151%	3.061%	1.006%	6.659%	100.000%	32.923%	56.814%	3.150%	1.009%	6.104%	81.168%	33.063%	59.569%	7.368%
District 4																
Acadia	57,576	44,480	10,864	238	573	1,421	42,943	34,071	7,383	173	400	916	37,678	30,555	6,407	716
Allen	22,750	16,327	4,490	246	947	740	17,510	12,751	3,275	182	646	656	12,201	9,478	2,217	506
Avoyelles	39,693	25,625	11,678	434	767	1,189	30,578	20,269	8,311	379	570	1,049	23,426	16,534	6,294	598
Beauregard	36,549	29,529	4,649	402	1,052	917	27,489	22,304	3,495	269	773	648	22,294	18,771	2,369	1,154
Calcasieu	216,785	139,772	59,386	4,702	3,536	9,389	163,166	108,789	41,898	3,359	2,604	6,516	120,511	85,659	29,513	5,339
Cameron	5,617	5,232	125	30	75	155	4,358	4,100	79	23	47	109	4,789	4,610	88	91
Evangeline	32,350	21,354	9,235	241	280	1,240	24,408	16,460	6,483	187	217	1,061	20,553	14,566	5,643	344
Grant	22,169	17,709	3,335	133	644	348	17,527	13,964	2,717	97	507	242	12,688	11,174	1,176	338
Iberia	69,929	39,206	24,556	2,123	794	3,250	52,791	31,295	17,069	1,562	581	2,284	44,526	28,287	14,352	1,887
Jefferson Davis	32,250	25,066	5,837	183	472	692	24,039	19,121	4,006	111	325	476	20,013	16,350	3,202	461
La Salle	14,791	11,348	1,422	283	372	1,366	11,563	8,636	1,065	264	271	1,327	8,792	7,978	637	177
Rapides	130,023	77,510	42,592	2,428	3,102	4,391	98,792	61,373	30,205	1,786	2,334	3,094	80,176	52,832	23,775	3,569
St. Landry	82,540	43,611	35,836	499	636	1,958	61,811	34,209	25,497	353	451	1,301	54,482	30,093	23,005	1,384
*St. Martin	1,368	1,285	13	7	34	29	1,154	1,091	11	5	30	17	993	979	1	13
St. Mary	49,406	26,949	15,991	835	1,670	3,961	37,521	21,594	11,520	593	1,173	2,641	30,210	18,712	9,891	1,607
Vermilion	57,359	44,477	8,810	1,447	623	2,002	43,012	34,363	5,787	1,037	488	1,337	36,769	30,505	4,994	1,270
Vernon	48,750	35,087	7,611	1,442	1,600	3,010	36,261	26,765	5,133	1,074	1,160	2,129	24,060	19,182	3,011	1,867
District 4	919,905	604,567	246,430	15,673	17,177	36,058	694,923	471,155	173,934	11,454	12,577	25,803	554,161	396,265	136,575	21,321
	100.000%	65.721%	26.789%	1.704%	1.867%	3.920%	100.000%	67.800%	25.029%	1.648%	1.810%	3.713%	79.744%	71.507%	24.645%	3.847%
District 5																
Bienville	12,981	6,950	5,600	57	207	167	10,073	5,486	4,284	30	162	111	8,847	4,843	3,917	87
Bossier	128,746	81,052	32,551	3,492	3,273	8,378	95,876	62,931	22,440	2,448	2,477	5,580	69,743	50,861	14,838	4,044
Caddo	237,848	103,457	119,304	4,034	3,840	7,213	182,407	85,059	86,359	3,008	2,958	5,023	151,296	73,113	71,249	6,934
Caldwell	9,645	7,646	1,632	51	150	166	7,478	5,969	1,224	46	116	123	6,031	5,124	818	89
Catahoula	8,906	5,776	2,395	46	119	570	6,951	4,557	1,736	33	87	538	6,467	4,639	1,770	58
Claiborne	14,170	7,263	6,360	88	185	274	11,507	6,258	4,824	55	140	230	8,598	4,632	3,820	146
Concordia	18,687	10,275	7,725	122	233	332	14,217	8,108	5,613	100	167	229	11,964	7,222	4,540	202
De Soto	26,812	15,284	9,973	117	740	698	20,440	11,909	7,425	86	557	463	18,713	11,330	6,810	573
East Carroll	7,459	2,054	5,272	29	43	61	5,901	1,773	4,043	19	27	39	4,709	1,306	3,359	44

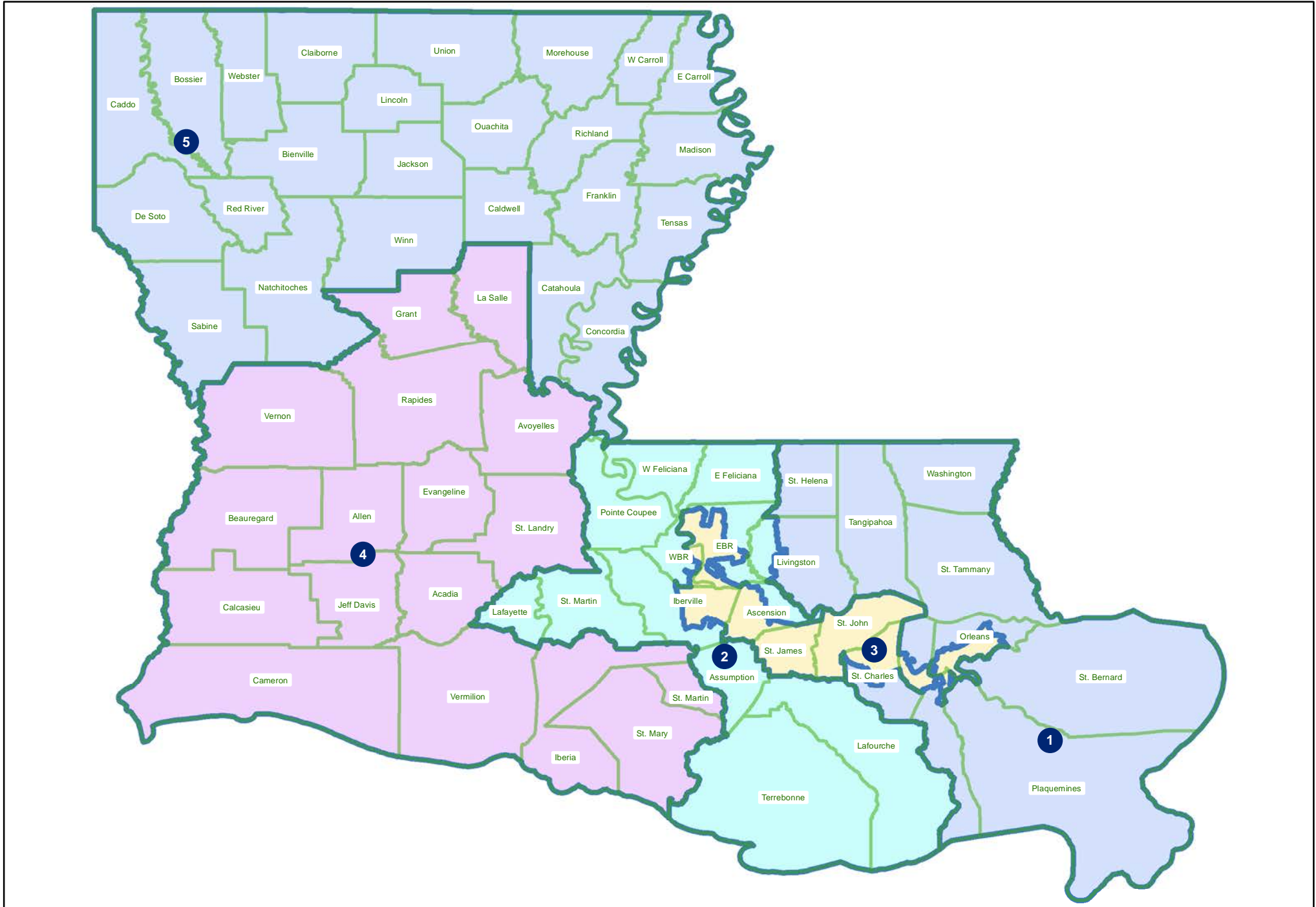
Splits

Plan: HB2 Engrossed (Stefanski) 221ES-13

	Total Population	Total White	Total Black	Total Asian	Total American Indian	Total Other	VAP Total	VAP White	VAP Black	VAP Asian	VAP American Indian	VAP Other	Reg Total Dec 2021	Reg White Dec 2021	Reg Black Dec 2021	Reg Other Dec 2021
District 5																
Franklin	19,774	12,492	6,802	70	205	205	15,028	9,901	4,779	44	153	151	13,159	9,015	4,034	110
Jackson	15,031	9,967	4,166	175	255	468	11,783	7,967	3,125	140	174	377	9,449	6,647	2,610	192
Lincoln	48,396	26,034	19,364	892	662	1,444	38,655	21,306	15,119	744	526	960	25,649	15,672	9,016	961
Madison	10,017	3,475	6,363	20	59	100	7,435	2,906	4,391	9	48	81	7,278	2,494	4,674	110
Morehouse	25,629	12,281	12,484	160	370	334	20,062	10,095	9,300	117	279	271	16,922	8,505	8,131	286
Natchitoches	37,515	19,361	15,725	255	861	1,313	29,349	16,010	11,415	198	683	1,043	23,107	12,850	9,224	1,033
Ouachita	160,368	88,545	61,217	2,788	2,661	5,157	120,200	69,974	42,290	2,118	2,059	3,759	99,752	60,515	35,658	3,579
Red River	7,620	4,195	3,106	25	171	123	5,714	3,338	2,164	3	116	93	5,631	3,130	2,418	83
Richland	20,043	11,785	7,603	83	258	314	15,383	9,338	5,546	66	203	230	13,662	8,470	4,961	231
Sabine	22,155	15,036	3,861	94	2,723	441	17,064	12,054	2,655	66	1,970	319	14,547	11,023	2,184	1,340
Tensas	4,147	1,744	2,312	23	26	42	3,235	1,446	1,728	12	23	26	3,455	1,503	1,917	35
Union	21,107	14,460	5,224	62	338	1,023	16,632	11,807	3,861	39	254	671	15,221	11,066	3,692	463
Webster	36,967	22,735	12,679	208	687	658	28,753	18,144	9,464	154	558	433	22,737	14,938	7,339	460
West Carroll	9,751	7,894	1,425	27	180	225	7,532	6,223	1,010	20	136	143	7,038	5,913	1,040	85
Winn	13,755	8,594	3,727	210	263	961	10,906	6,932	2,695	170	207	902	8,406	5,988	2,292	126
District 5	917,529	498,355	356,870	13,128	18,509	30,667	702,581	399,491	257,490	9,725	14,080	21,795	572,381	340,799	210,311	21,271
	100.000%	54.315%	38.895%	1.431%	2.017%	3.342%	100.000%	56.860%	36.649%	1.384%	2.004%	3.102%	81.468%	59.541%	36.743%	3.716%

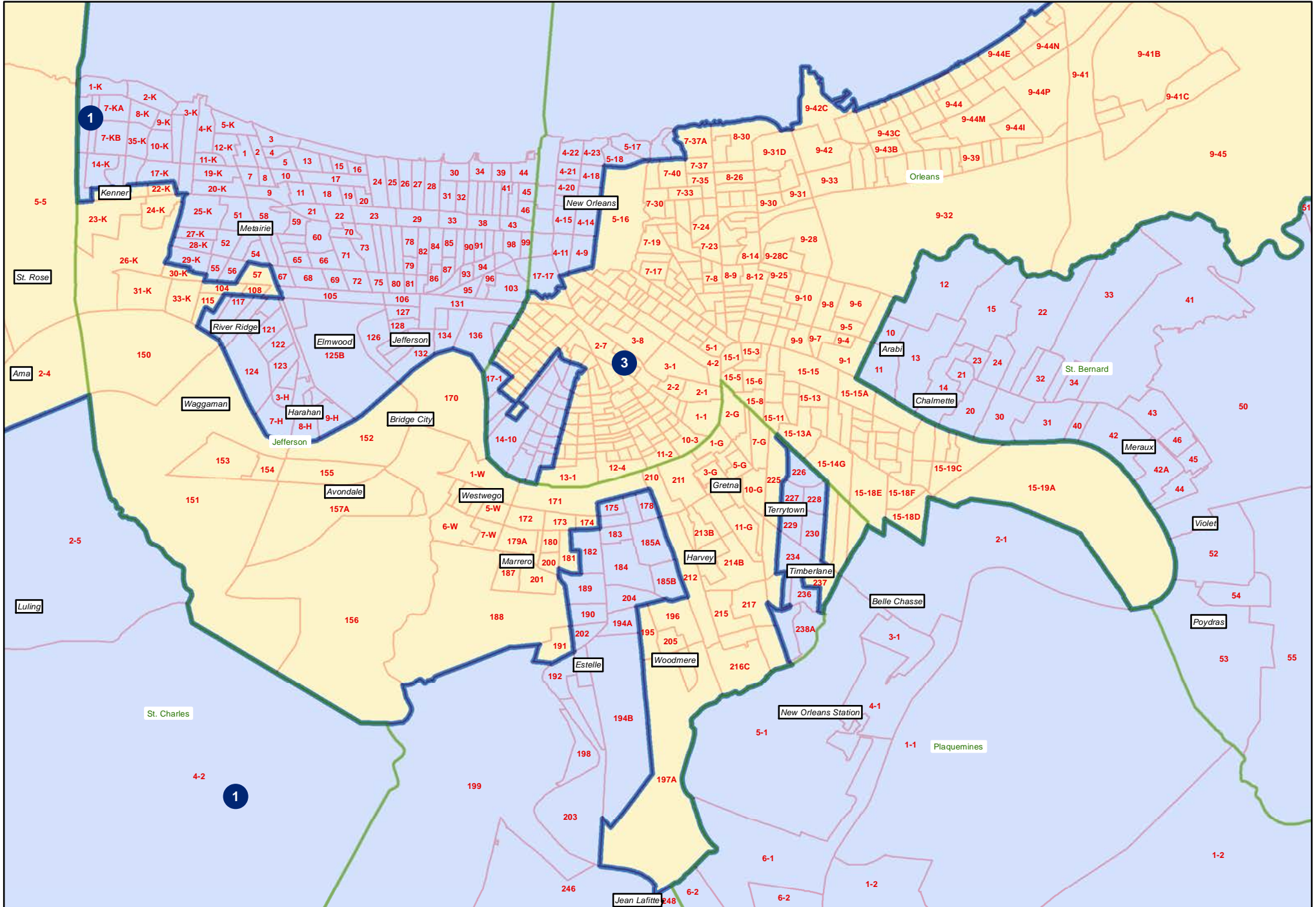
HB2 Engrossed (Stefanski) 221ES-13

Enter Region Text Here

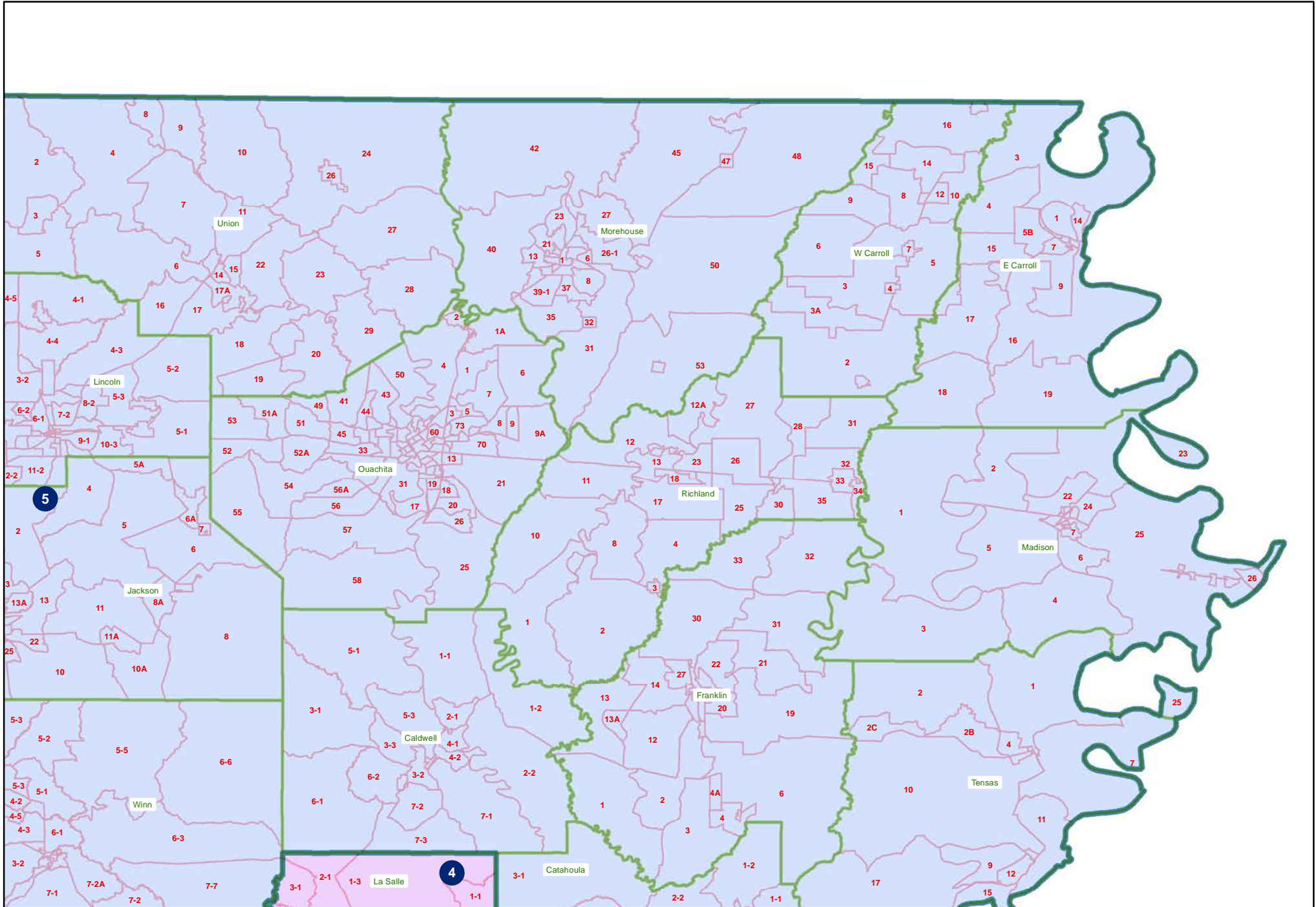


HB2 Engrossed (Stefanski) 221ES-13

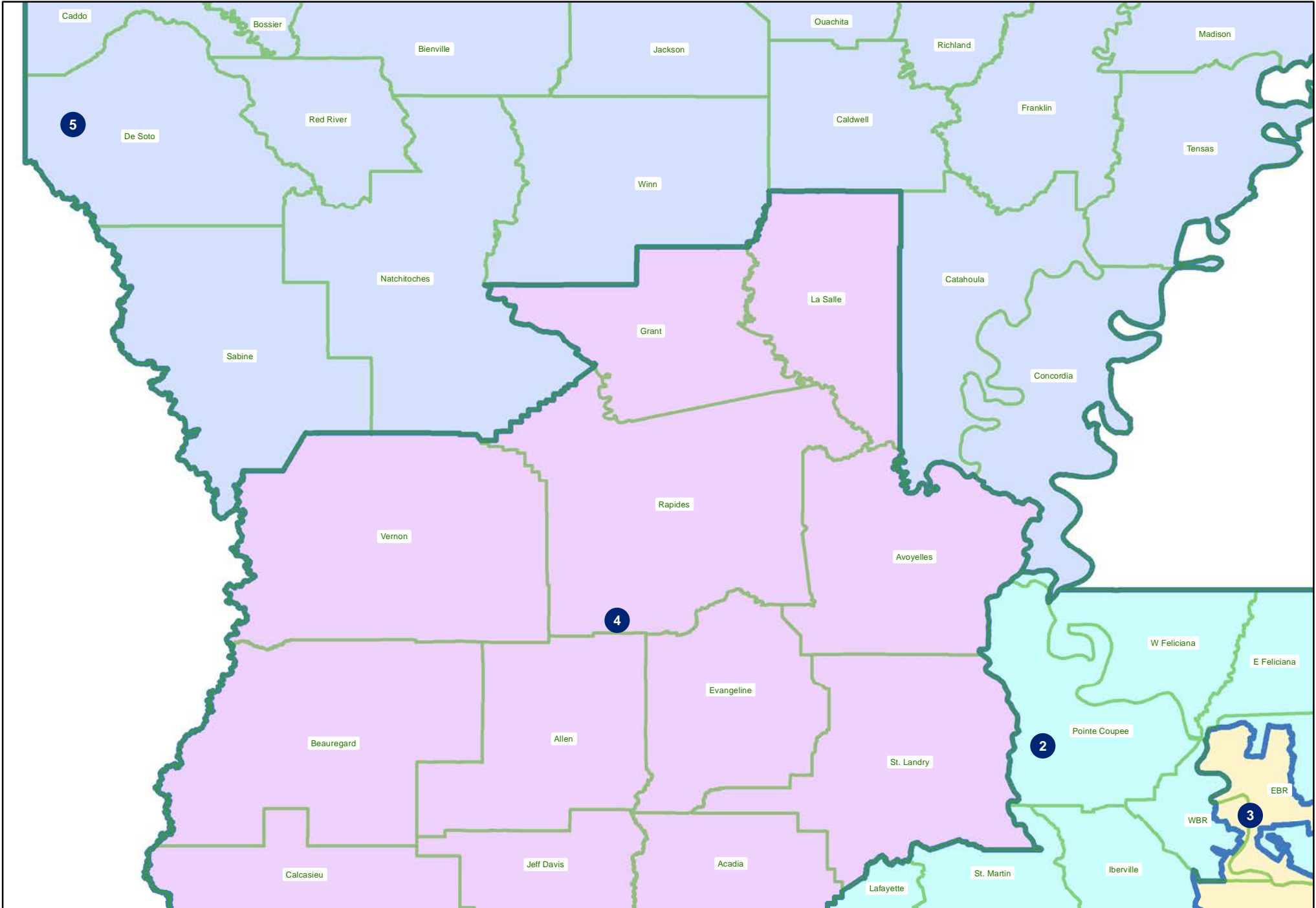
Orleans and Jefferson



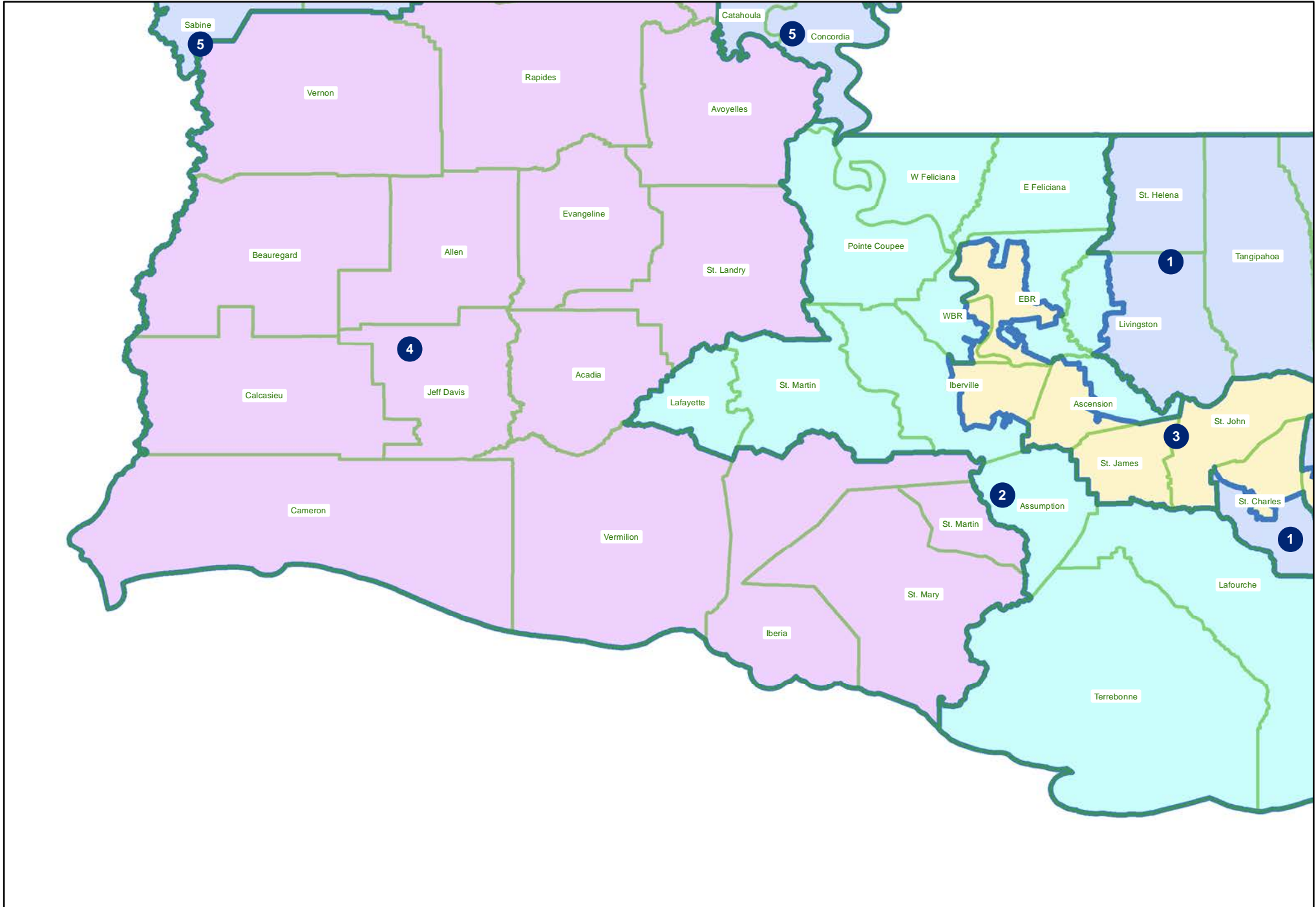
HB2 Engrossed (Stefanski) 221ES-13
Northeast



HB2 Engrossed (Stefanski) 221ES-13
Central

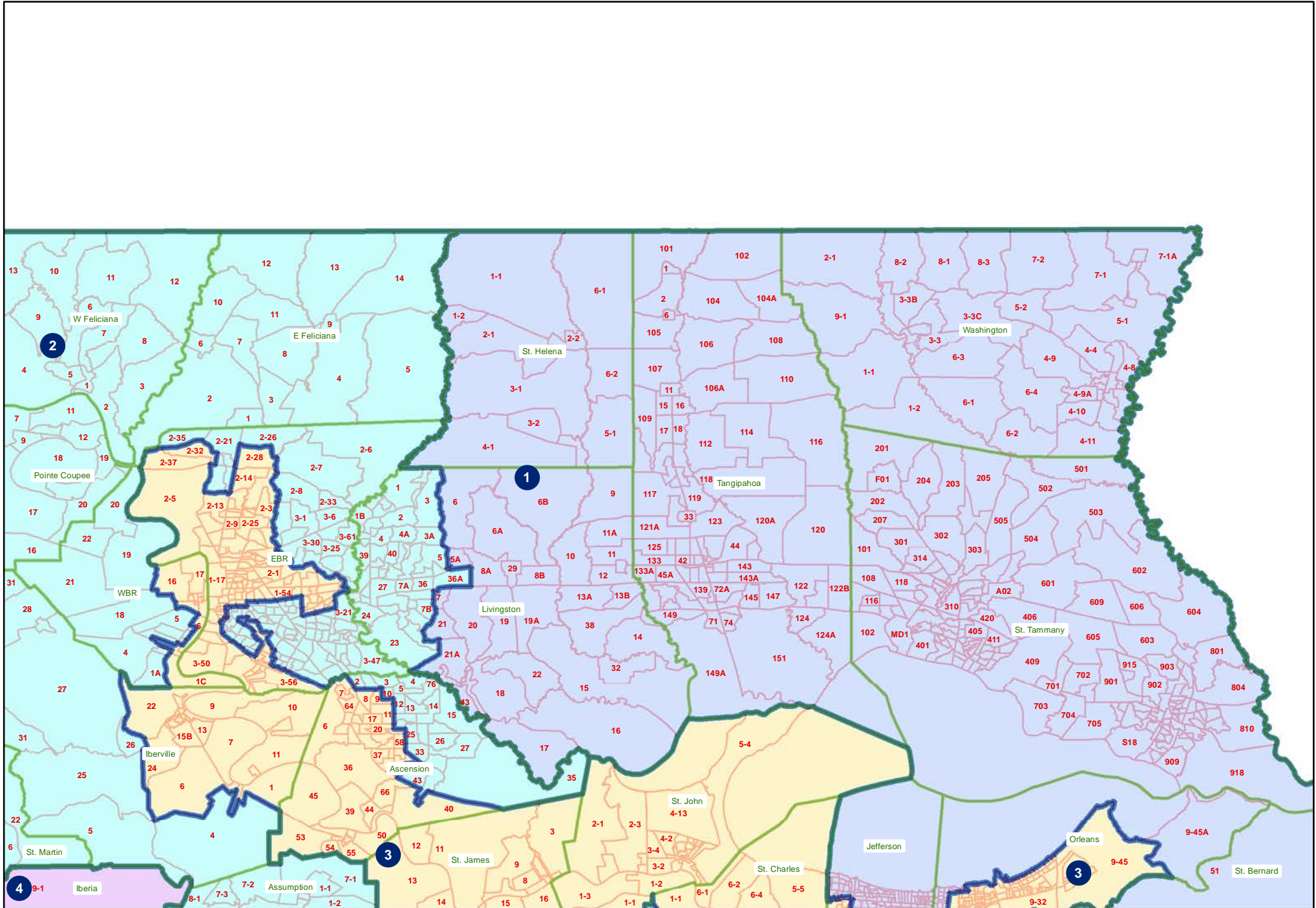


HB2 Engrossed (Stefanski) 221ES-13
Southwest

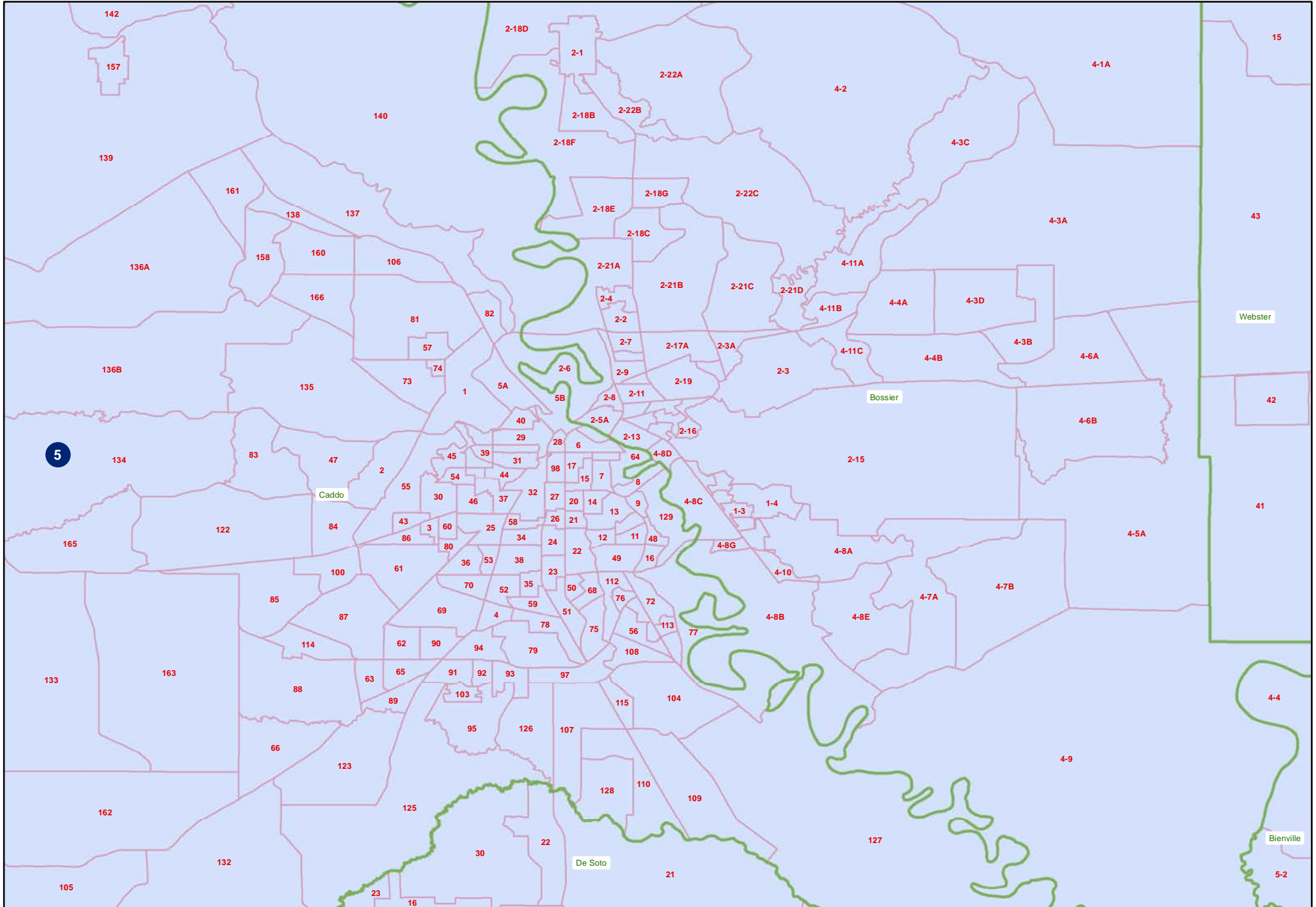


HB2 Engrossed (Stefanski) 221ES-13

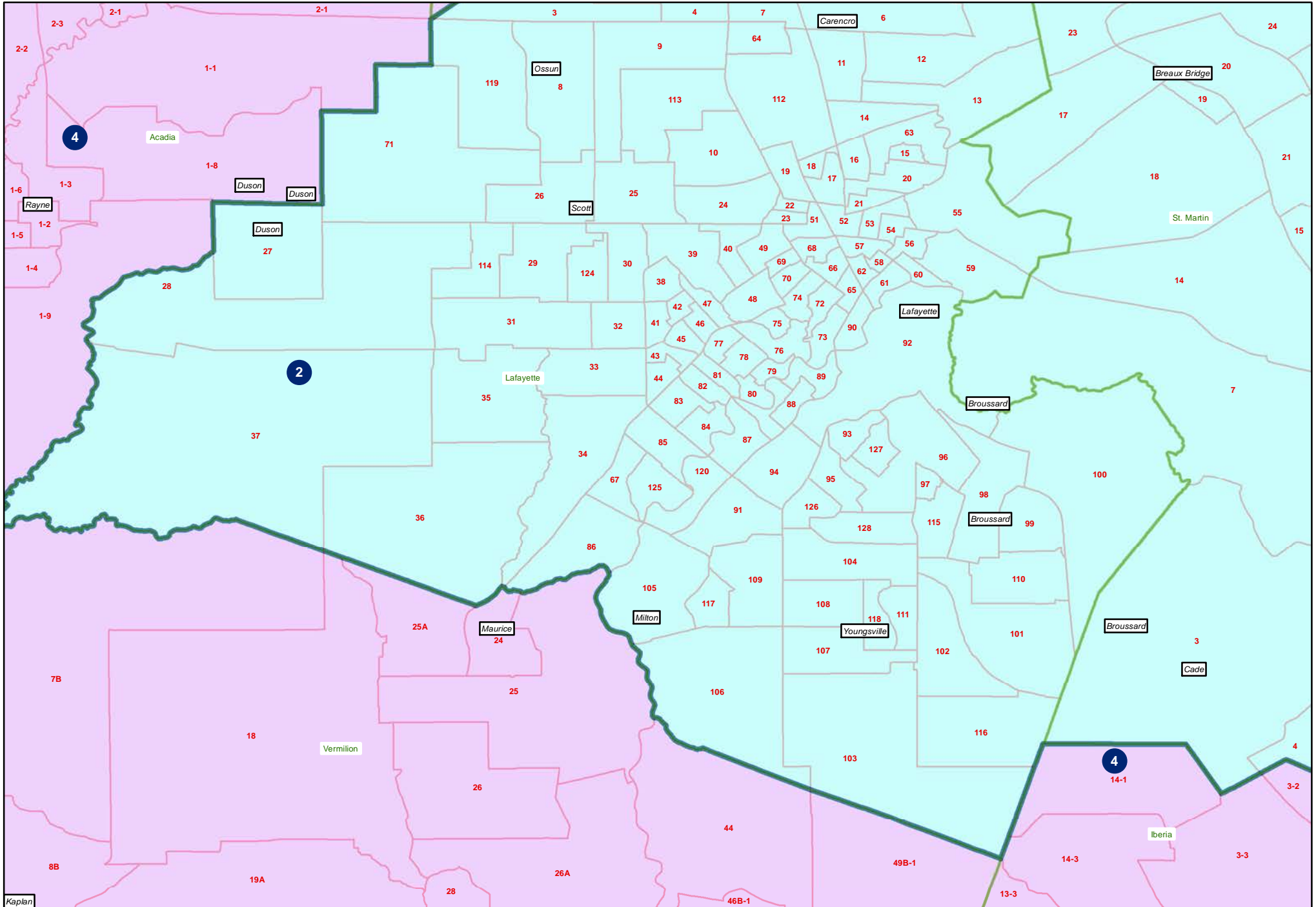
Florida Parishes



HB2 Engrossed (Stefanski) 221ES-13 Shreveport

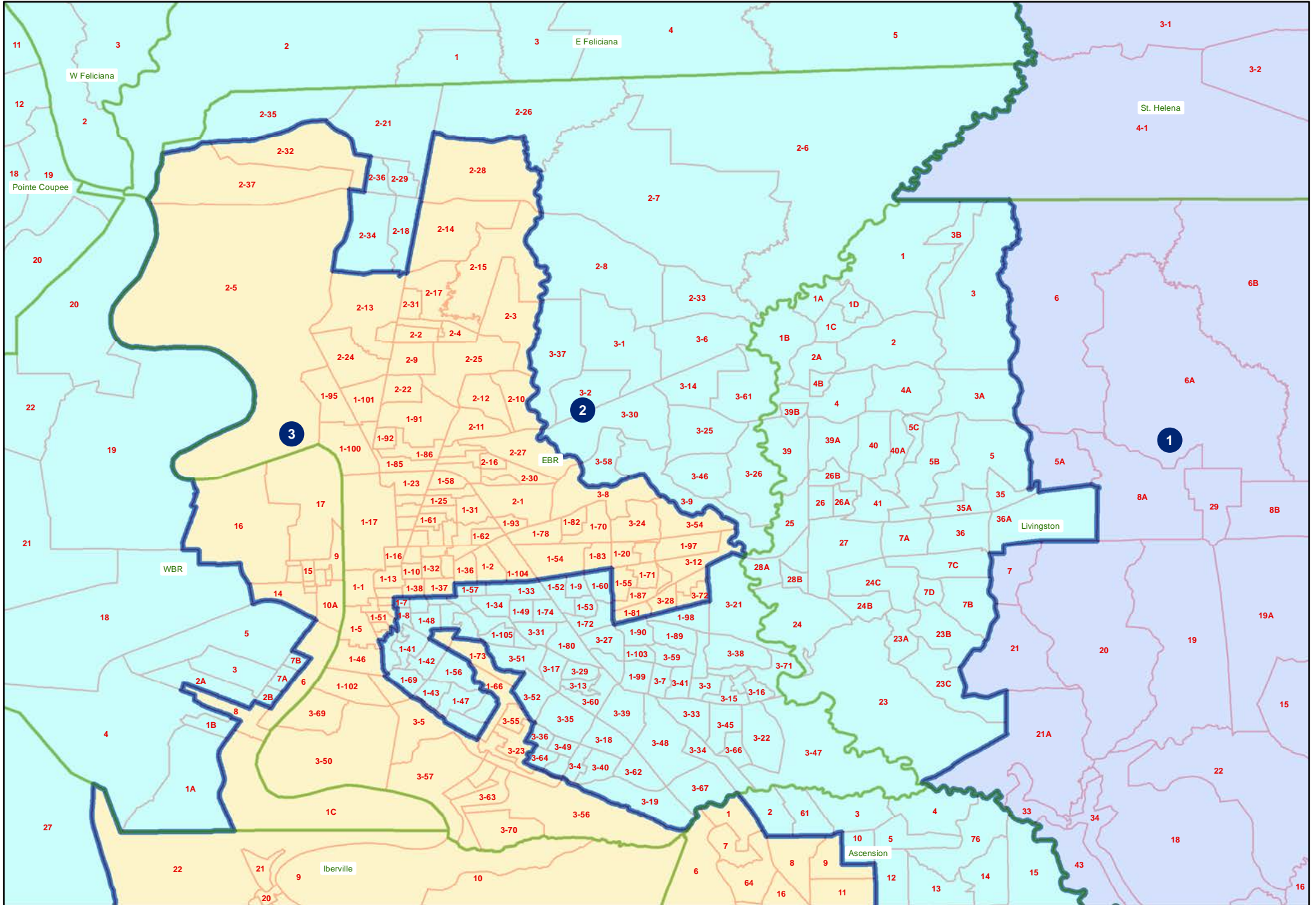


HB2 Engrossed (Stefanski) 221ES-13
Lafayette

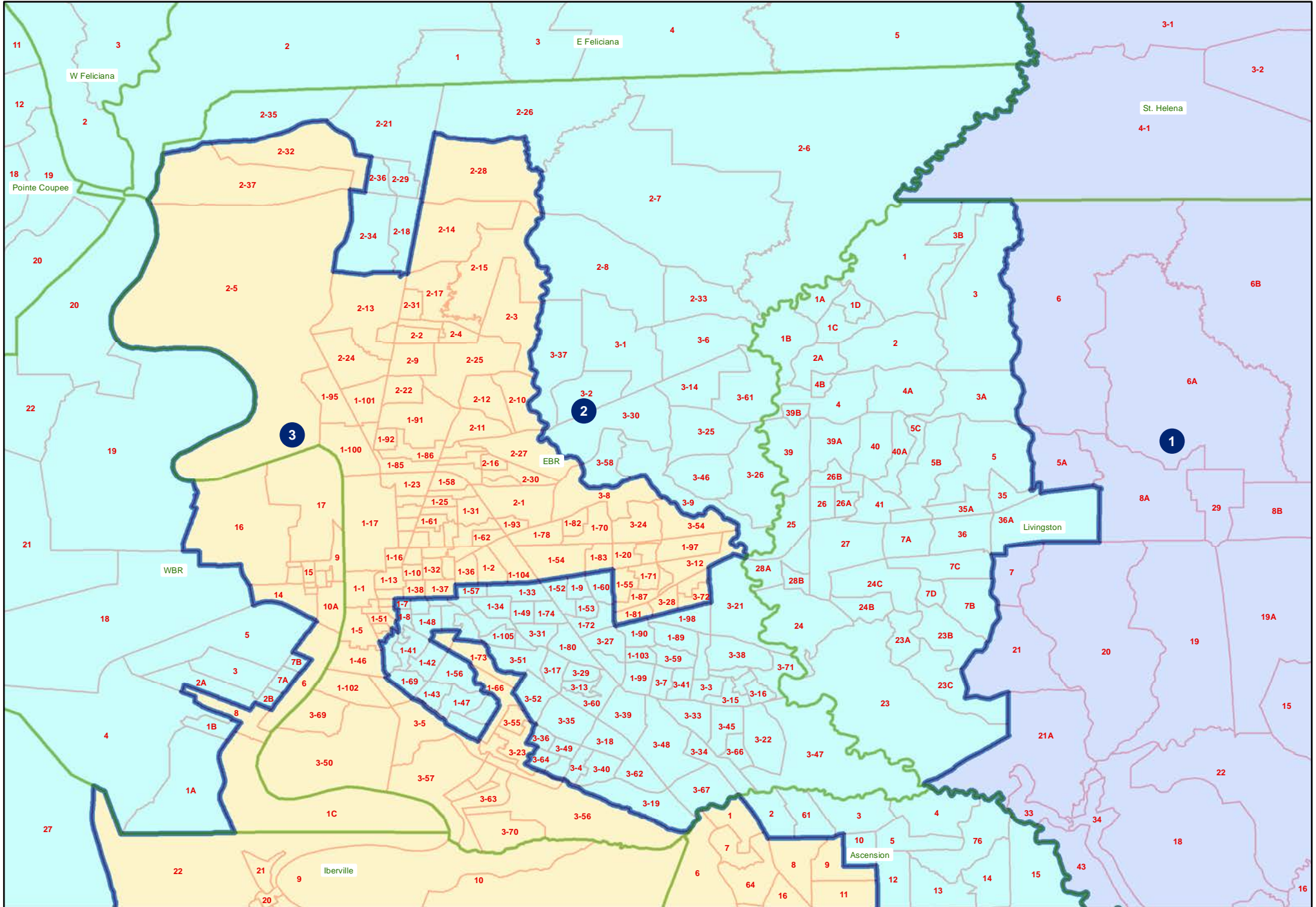


HB2 Engrossed (Stefanski) 221ES-13

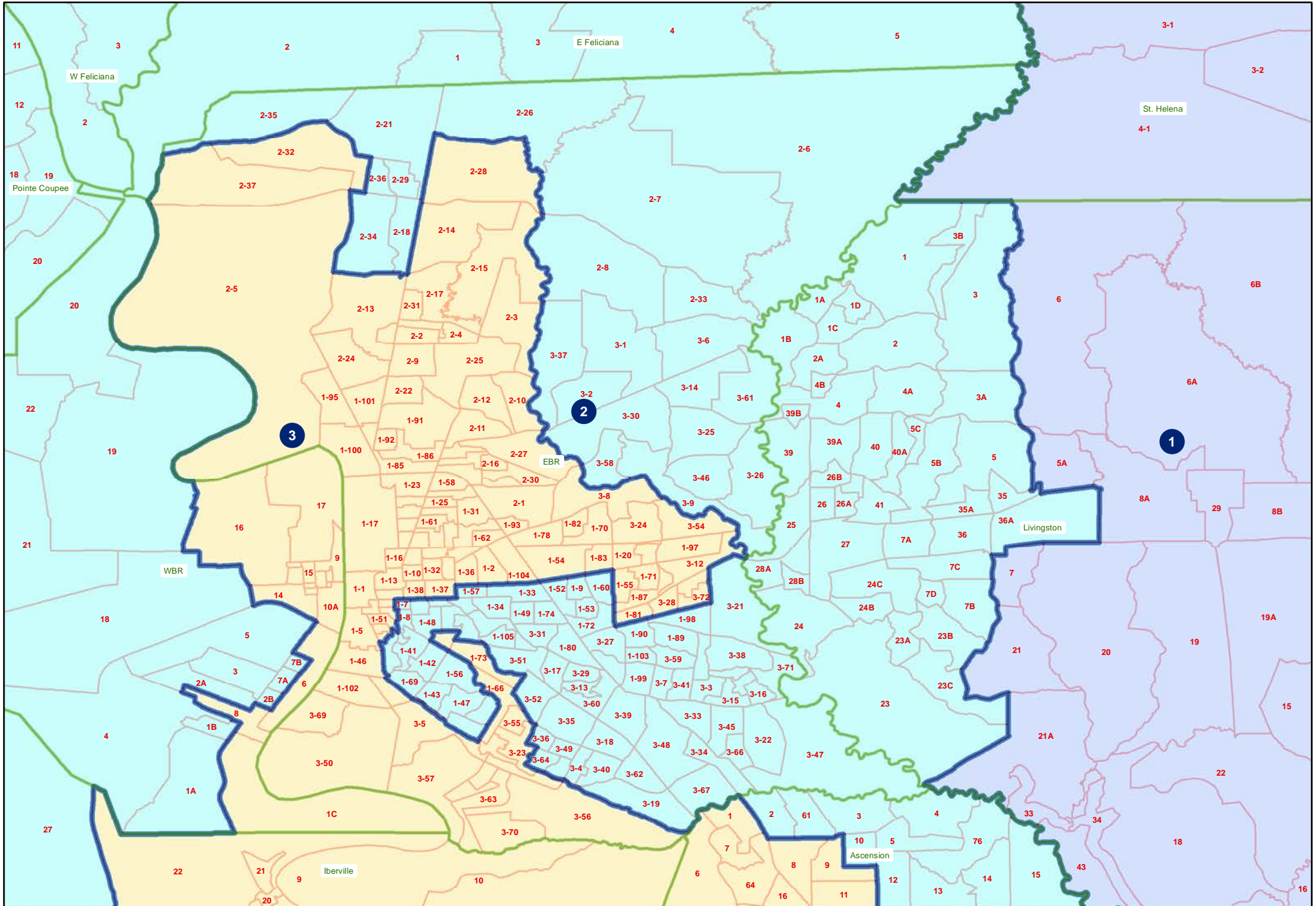
Baton Rouge



HB2 Engrossed (Stefanski) 221ES-13 Northwest



HB2 Engrossed (Stefanski) 221ES-13 Acadiana



HB2 Engrossed (Stefanski) 221ES-13
Monroe

