

2022 First Extraordinary Session

HOUSE BILL NO. 1

BY REPRESENTATIVES SCHEXNAYDER, BEAULLIEU, WILFORD CARTER,  
DESHOTEL, FARNUM, HODGES, HORTON, MAGEE, AND STEFANSKI

REAPPORTIONMENT/CONGRESS: Provides relative to the districts for members of the  
United States Congress (Item #3)

1 AN ACT

2 To enact R.S. 18:1276 and to repeal R.S. 18:1276.1, relative to congressional districts; to  
3 provide for the redistricting of Louisiana's congressional districts; to provide with  
4 respect to positions and offices, other than congressional, which are based upon  
5 congressional districts; to provide for the effectiveness; and to provide for related  
6 matters.

7 Be it enacted by the Legislature of Louisiana:

8 Section 1. R.S. 18:1276 is hereby enacted to read as follows:

9 §1276. Congressional districts

10 Louisiana shall be divided into six congressional districts, and the qualified  
11 electors of each district shall elect one representative to the United States House of  
12 Representatives. The districts shall be composed as follows:

13 (1) District 1 is composed of Precincts 1, 2, 3, 4, 5, 7, 8, 9, 10, 11, 12, 13, 14,  
14 15, 16, 17, 18, 19, 20, 21, 22, 23, 24, 25, 26, 27, 28, 29, 30, 31, 32, 33, 34, 35, 36, 37,  
15 38, 39, 40, 41, 42, 43, 44, 45, 46, 51, 52, 53, 54, 55, 56, 58, 59, 60, 61, 62, 63, 64, 65,  
16 66, 67, 68, 69, 70, 71, 72, 73, 74, 75, 76, 77, 78, 79, 80, 81, 82, 83, 84, 85, 86, 87, 88,  
17 89, 90, 91, 92, 93, 94, 95, 96, 97, 98, 99, 100, 101, 102, 103, 105, 106, 117, 118, 119,  
18 120, 121, 122, 123, 124, 125A, 125B, 126, 127, 128, 129, 130, 132, 134, 136, 138,  
19 192, 198, 199, 203, 246, 247, 248, 1-GI, 1-H, 2-H, 3-H, 4-H, 5-H, 6-H, 7-H, 8-H,

1        9-H, 1-K, 2-K, 3-K, 4-K, 5-K, 6-KA, 6-KB, 7-KA, 7-KB, 8-K, 9-K, 10-K, 11-K,  
2        12-K, 13-KA, 14-K, 16-K, 17-K, 18-K, 19-K, 20-K, 25-K, 27-K, 28-K, 34-K, 35-K,  
3        and 1-L of Jefferson Parish; Precincts 3-3, 3-4, 3-5, 3-6, 4-1, 4-2, 4-3, 4-4, 4-5, 4-6,  
4        7-4, 8-1, 9-1, 9-2, 10-1, 10-2, 10-3, 10-4, 10-5, 10-6, 10-7, 10-8, 10-9, 10-10, 10-11,  
5        10-12, 10-13, 10-14, 10-15, 10-16, 11-1, 11-2, and 11-5 of Lafourche Parish;  
6        Precincts 3-20, 4-7, 4-8, 4-9, 4-11, 4-14, 4-15, 4-17, 4-17A, 4-18, 4-20, 4-21, 4-22,  
7        4-23, 5-15, 5-16, 5-17, 5-18, 14-2, 14-3, 14-4, 14-5, 14-6, 14-7, 14-8, 14-9, 14-10,  
8        14-11, 14-12, 14-13A, 14-14, 14-15, 14-16, 14-17, 14-18A, 14-19, 14-20, 14-21,  
9        16-1, 16-1A, 16-2, 16-3, 17-1, 17-2, 17-17, 17-18, 17-18A, 17-19, and 17-20 of  
10       Orleans Parish; Plaquemines Parish; St. Bernard Parish; St. Tammany Parish;  
11       Precincts 70, 70A, 71, 72, 72A, 73, 74, 120, 122, 122A, 122B, 124, 124A, 139, 143,  
12       143A, 145, 147, 149, 149A, and 151 of Tangipahoa Parish; and Precincts 11, 15, 20,  
13       21, 23, 25, 27, 29, 31, 32, 34, 35, 36, 38, 41, 43, 46, 48, 49, 52, 53, 54, 55, 56, 57, 58,  
14       59, 60, 61, 63, 69, 72, 84, 85, 88, 89, 110, and 111 of Terrebonne Parish.

15            (2) District 2 is composed of Precincts 30, 36, 37, 39, 42, 44, 45, 47, 48, 50,  
16        51, 52, 53, 54, 55, 57, and 65 of Ascension Parish; Precincts 1-1, 1-2, 2-2, 4-3, 5-5,  
17        6-1, 6-2, 6-3, and 7-1 of Assumption Parish; Precincts 1-2, 1-3, 1-4, 1-5, 1-6, 1-10,  
18        1-11, 1-13, 1-14, 1-15, 1-16, 1-17, 1-18, 1-19, 1-21, 1-22, 1-23, 1-24, 1-25, 1-26,  
19        1-27, 1-28, 1-29, 1-30, 1-31, 1-32, 1-36, 1-50, 1-51, 1-58, 1-61, 1-62, 1-63, 1-67,  
20        1-77, 1-84, 1-85, 1-86, 1-91, 1-92, 1-93, 1-94, 1-95, 1-100, 1-101, 1-104, 2-1, 2-9,  
21        2-11, 2-13, 2-16, 2-20, 2-22, 2-23, 2-24, and 2-30 of East Baton Rouge Parish;  
22        Precincts 1, 3, 6, 7, 9, 10, 11, 12, 13C, 14, 14A, 15, 16, 17, 18, 19, 20, 21, 22, and  
23        23 of Iberville Parish; Precincts 57, 104, 108, 115, 116, 131, 133, 150, 151, 152, 153,  
24        154, 155, 156, 157A, 157B, 170, 171, 172, 173, 174, 175, 176, 177, 178, 179A,  
25        179B, 180, 181, 182, 183, 184, 185A, 185B, 187, 188, 189, 190, 191, 193A, 193B,  
26        194A, 194B, 195, 196, 197A, 197B, 200, 201, 202, 204, 205, 210, 211, 212, 213A,  
27        213B, 213C, 214A, 214B, 215, 216A, 216B, 216C, 217, 225, 226, 227, 228, 229,  
28        230, 231, 232A, 232B, 234, 235, 236, 237, 238A, 238B, 1-G, 2-G, 3-G, 4-G, 5-G,  
29        6-G, 7-G, 8-G, 9-G, 10-G, 11-G, 12-G, 13-G, 13-KB, 15-K, 21-K, 22-K, 23-K, 24-K,

1        26-K, 29-K, 30-K, 31-K, 33-K, 1-W, 2-W, 3-W, 4-W, 5-W, 6-W, and 7-W of  
 2        Jefferson Parish; Precincts 1-1, 1-2, 1-5, 1-6, 2-1, 2-2, 2-4, 2-6, 2-7, 3-1, 3-8, 3-9,  
 3        3-12, 3-14, 3-15, 3-18, 3-19, 4-2, 4-3, 4-5, 4-6, 5-1, 5-2, 5-3, 5-5, 5-7, 5-8, 5-9, 5-10,  
 4        5-11, 5-12, 5-13, 6-1, 6-2, 6-4, 6-6, 6-7, 6-8, 6-9, 7-1, 7-2, 7-4, 7-5, 7-6, 7-7, 7-8,  
 5        7-9A, 7-10, 7-11, 7-12, 7-13, 7-14, 7-15, 7-16, 7-17, 7-18, 7-19, 7-20, 7-21, 7-23,  
 6        7-24, 7-25, 7-25A, 7-26, 7-27, 7-27B, 7-28, 7-28A, 7-29, 7-30, 7-32, 7-33, 7-35,  
 7        7-37, 7-37A, 7-40, 7-41, 7-42, 8-1, 8-2, 8-4, 8-6, 8-7, 8-8, 8-9, 8-12, 8-13, 8-14,  
 8        8-15, 8-19, 8-20, 8-21, 8-22, 8-23, 8-24, 8-25, 8-26, 8-27, 8-28, 8-30, 9-1, 9-3, 9-4,  
 9        9-5, 9-6, 9-7, 9-8, 9-9, 9-10, 9-11, 9-12, 9-13, 9-14, 9-15, 9-16, 9-17, 9-19, 9-21,  
 10       9-23, 9-25, 9-26, 9-28, 9-28C, 9-29, 9-30, 9-30A, 9-31, 9-31A, 9-31B, 9-31D, 9-32,  
 11       9-33, 9-34A, 9-35, 9-35A, 9-36, 9-36B, 9-37, 9-38, 9-38A, 9-39, 9-39B, 9-40,  
 12       9-40A, 9-40C, 9-41, 9-41A, 9-41B, 9-41C, 9-41D, 9-42, 9-42C, 9-43A, 9-43B,  
 13       9-43C, 9-43E, 9-43F, 9-43G, 9-43H, 9-43I, 9-43J, 9-43K, 9-43L, 9-43M, 9-43N,  
 14       9-44, 9-44A, 9-44B, 9-44D, 9-44E, 9-44F, 9-44G, 9-44I, 9-44J, 9-44L, 9-44M,  
 15       9-44N, 9-44O, 9-44P, 9-44Q, 9-45, 9-45A, 10-3, 10-6, 10-7, 10-8, 10-9, 10-11,  
 16       10-12, 10-13, 10-14, 11-2, 11-3, 11-4, 11-5, 11-8, 11-9, 11-10, 11-11, 11-12, 11-13,  
 17       11-14, 11-17, 12-1, 12-2, 12-3, 12-4, 12-5, 12-6, 12-7, 12-8, 12-9, 12-10, 12-11,  
 18       12-12, 12-13, 12-14, 12-16, 12-17, 12-19, 13-1, 13-2, 13-3, 13-4, 13-5, 13-6, 13-7,  
 19       13-8, 13-9, 13-10, 13-11, 13-12, 13-13, 13-14, 13-15, 13-16, 14-1, 14-23, 14-24A,  
 20       14-25, 14-26, 15-1, 15-2, 15-3, 15-5, 15-6, 15-8, 15-9, 15-10, 15-11, 15-12, 15-12A,  
 21       15-13, 15-13A, 15-13B, 15-14, 15-14A, 15-14B, 15-14C, 15-14D, 15-14E, 15-14F,  
 22       15-14G, 15-15, 15-15A, 15-15B, 15-16, 15-17, 15-17A, 15-17B, 15-18, 15-18A,  
 23       15-18B, 15-18C, 15-18D, 15-18E, 15-18F, 15-19, 15-19A, 15-19B, 15-19C, 16-4,  
 24       16-5, 16-6, 16-7, 16-8, 16-9, 17-3, 17-4, 17-5, 17-6, 17-7, 17-8, 17-9, 17-10, 17-11,  
 25       17-12, 17-13, 17-13A, 17-14, 17-15, and 17-16 of Orleans Parish; Precincts 1-1, 1-2,  
 26       1-3, 1-5, 2-1, 2-2, 2-3, 2-4, 2-5, 4-1, 4-2, 4-3, 4-4, 5-1, 5-3, 5-4, 6-6, 6-7, 6-8, 7-1,  
 27       7-2, 7-3, and 7-4 of St. Charles Parish; St. James Parish; Precincts 1-1, 1-2, 1-3, 1-4,  
 28       1-5, 2-1, 2-2, 2-3, 2-4, 3-1, 3-2, 3-4, 4-1, 4-2, 4-3, 4-14, 5-1, 5-8, 6-1, 6-3, 6-4, and

1 7-7 of St. John the Baptist Parish; and Precincts 1A, 1B, 1C, 2B, 6, 7B, 8, 10A, 10B,  
2 11A, 11B, 13A, 13B, 14, and 15 of West Baton Rouge Parish.

3 (3) District 3 is composed of Acadia Parish; Calcasieu Parish; Cameron  
4 Parish; Iberia Parish; Jefferson Davis Parish; Lafayette Parish; Precincts 3, 4, 5, 6,  
5 7, 8, 9, 10, 11, 12, 13, 14, 15, 16, 17, 18, 19, 20, 21, 22, 23, 24, 25, 26, 27, 28, and  
6 29 of St. Martin Parish; Precincts 1, 2, 3, 4, 5, 6, 7, 8, 9, 10, 11, 12, 13, 14, 15, 16,  
7 17, 18, 19, 20, 21, 22, 23, 25, 26, 27, 28, 29, 30, 31, 32, 33, 34, 35, 36, 37, 38, 39, 40,  
8 42, 43, and 44 of St. Mary Parish; and Vermilion Parish.

9 (4) District 4 is composed of Allen Parish; Beauregard Parish; Bienville  
10 Parish; Bossier Parish; Caddo Parish; Claiborne Parish; De Soto Parish; Evangeline  
11 Parish; Natchitoches Parish; Precincts C1, C2, C3, C4, C5, C6, C7, C8, C9, C10,  
12 C11-A, C11-B, C13, C14, C15, C17, C18, C19, C20, C21, C22, C23, C24, C25, C26,  
13 C27, C28, C30, C31, C32, C33, C34, C35, C36, C37-A, C37-B, C38-A, C38-B, C39,  
14 C40, C41, C42, N1, N2, N3, N4, N5, N6, N7, N8, N9, N10, N11, N12, N13-A,  
15 N13-B, N14-A, N14-B, N15, N18-A, N19, N20, N21, N22, S1, S2, S4, S5, S6A,  
16 S6B, S7, S8, S9, S10, S11, S13, S14, S15, S17, S18, S19, S20, S21, S22, S23, S24,  
17 S25, S26, S27, S28, and S29 of Rapides Parish; Red River Parish; Sabine Parish;  
18 Vernon Parish; and Webster Parish.

19 (5) District 5 is composed of Avoyelles Parish; Caldwell Parish; Catahoula  
20 Parish; Concordia Parish; East Carroll Parish; East Feliciana Parish; Franklin Parish;  
21 Grant Parish; Jackson Parish; La Salle Parish; Lincoln Parish; Madison Parish;  
22 Morehouse Parish; Ouachita Parish; Pointe Coupee Parish; Precincts N16, N17,  
23 N18-B, N23, N24, N25, N26, N27, N28, N29, and S16 of Rapides Parish; Richland  
24 Parish; St. Helena Parish; St. Landry Parish; Precincts 1, 2, 6, 11, 15, 16, 17, 18, 26,  
25 27, 28, 33, 40, 40A, 41, 42, 42A, 43, 44, 45, 45A, 46, 47, 48, 49, 101, 102, 104,  
26 104A, 105, 106, 106A, 107, 108, 109, 110, 111A, 112, 114, 115B, 116, 117, 118,  
27 119, 120A, 120B, 121, 121A, 123, 125, 127, 127A, 129, 129A, 133, 133A, 137,  
28 137A, 137B, 137C, 137D, 141, and 141A of Tangipahoa Parish; Tensas Parish;

1 Union Parish; Washington Parish; West Carroll Parish; West Feliciana Parish; and  
2 Winn Parish.

3 (6) District 6 is composed of Precincts 1, 2, 3, 4, 5, 6, 7, 8, 9, 10, 11, 12, 13,  
4 14, 15, 16, 17, 18, 20, 21, 22, 23, 24, 25, 26, 27, 28, 31, 32, 33, 34, 35, 40, 41, 43, 58,  
5 61, 62, 63, 64, 66, 71, 72, 73, 76, 77, and 78 of Ascension Parish; Precincts 2-1, 2-3,  
6 2-4, 2-5, 3-1, 3-2, 4-1, 4-2, 5-1, 5-2, 5-3, 7-2, 7-3, 8-1, and 9-1 of Assumption Parish;  
7 Precincts 1-1, 1-7, 1-8, 1-9, 1-12, 1-20, 1-33, 1-34, 1-35, 1-37, 1-38, 1-39, 1-40,  
8 1-41, 1-42, 1-43, 1-44, 1-45, 1-46, 1-47, 1-48, 1-49, 1-52, 1-53, 1-54, 1-55, 1-56,  
9 1-57, 1-59, 1-60, 1-64, 1-65, 1-66, 1-68, 1-69, 1-70, 1-71, 1-72, 1-73, 1-74, 1-75,  
10 1-76, 1-78, 1-79, 1-80, 1-81, 1-82, 1-83, 1-87, 1-88, 1-89, 1-90, 1-97, 1-98, 1-99,  
11 1-102, 1-103, 1-105, 1-107, 2-2, 2-3, 2-4, 2-5, 2-6, 2-7, 2-8, 2-10, 2-12, 2-14, 2-15,  
12 2-17, 2-18, 2-19, 2-21, 2-25, 2-26, 2-27, 2-28, 2-29, 2-31, 2-32, 2-33, 2-34, 2-35,  
13 2-36, 2-37, 3-1, 3-2, 3-3, 3-4, 3-5, 3-6, 3-7, 3-8, 3-9, 3-10, 3-11, 3-12, 3-13, 3-14,  
14 3-15, 3-16, 3-17, 3-18, 3-19, 3-20, 3-21, 3-22, 3-23, 3-24, 3-25, 3-26, 3-27, 3-28,  
15 3-29, 3-30, 3-31, 3-32, 3-33, 3-34, 3-35, 3-36, 3-37, 3-38, 3-39, 3-40, 3-41, 3-43,  
16 3-44, 3-45, 3-46, 3-47, 3-48, 3-49, 3-50, 3-51, 3-52, 3-53, 3-54, 3-55, 3-56, 3-57,  
17 3-58, 3-59, 3-60, 3-61, 3-62, 3-63, 3-64, 3-65, 3-66, 3-67, 3-68, 3-69, 3-70, 3-71, and  
18 3-72 of East Baton Rouge Parish; Precincts 4, 5, 13, 15B, 24, 25, 26, 27, 28, 29, 31,  
19 and 32 of Iberville Parish; Precincts 1-1, 1-2, 1-3, 1-4, 1-5, 2-1, 2-1A, 2-2, 2-3, 2-3A,  
20 2-4, 2-5, 2-6, 2-7, 2-8, 2-9, 2-10, 2-11, 2-12, 2-13, 2-14, 3-1, 3-2, 5-1, 5-1A, 5-1B,  
21 5-2, 6-1, 6-2, 6-3, 6-4, 6-5, 7-1, 7-2, 7-3, 11-3, and 11-4 of Lafourche Parish;  
22 Livingston Parish; Precincts 1-6, 2-6, 3-1, 3-2, 3-3, 5-5, 6-1, 6-2, and 6-4 of St.  
23 Charles Parish; Precincts 4-13, 5-4, 5-7, 7-2, 7-3, and 7-5 of St. John the Baptist  
24 Parish; Precincts 1 and 2 of St. Martin Parish; Precincts 24, 41, and 45 of St. Mary  
25 Parish; Precincts 1, 4, 5, 7, 8, 9, 10, 12, 13, 14, 16, 17, 18, 19, 45, 51, 64, 65, 67, 68,  
26 71, 73, 74, 76, 82, 83, 86, 87, and 90 of Terrebonne Parish; and Precincts 2A, 3, 4,  
27 5, 7A, 9, 12, 16, 17, 18, 19, 20, 21, and 22 of West Baton Rouge Parish.

28 Section 2. R.S. 18:1276.1 is hereby repealed in its entirety.

1 Section 3.(A) The precincts referenced in this Act are those precincts identified as  
2 Voting Districts (VTDs) in the 2020 Census Redistricting TIGER/Line Shapefiles for the  
3 State of Louisiana as validated through the data verification program of the Louisiana House  
4 of Representatives and the Louisiana Senate and available on the legislature's website on the  
5 effective date of this Section.

6 (B) When a precinct referenced in this Act has been subdivided by action of the  
7 parish governing authority on a nongeographic basis or subdivided by action of the parish  
8 governing authority on a geographic basis in accordance with the provisions of R.S.  
9 18:532.1, the enumeration in this Act of the general precinct designation shall include all  
10 nongeographic and all geographic subdivisions thereof, however such subdivisions may be  
11 designated.

12 (C) The territorial limits of the districts as provided in this Act shall continue in  
13 effect until changed by law regardless of any subsequent change made to the precincts by  
14 the parish governing authority.

15 Section 4. The provisions of this Act shall not reduce the term of office of any  
16 person holding any position or office on the effective date of this Section for which the  
17 appointment or election is based upon a congressional district as composed pursuant to R.S.  
18 18:1276.1. Any position or office that is filled by appointment or election based on a  
19 congressional district and that is to be filled after January 3, 2023, shall be appointed or  
20 elected from a district as it is described in Section 1 of this Act.

21 Section 5.(A) Solely for the purposes of qualifying for election and the election of  
22 representatives to the United States Congress at the regularly scheduled election for  
23 representatives to the congress in 2022, the provisions of Section 1 of this Act shall become  
24 effective upon signature of this Act by the governor or, if not signed by the governor, upon  
25 expiration of the time for bills to become law without signature by the governor, as provided  
26 in Article III, Section 18 of the Constitution of Louisiana. If this Act is vetoed by the  
27 governor and subsequently approved by the legislature, the provisions of Section 1 of this  
28 Act shall become effective on the day following such approval for the purposes established  
29 in this Subsection.

1 (B) For subsequent elections of representatives to the United States Congress and  
2 for all other purposes, the provisions of Section 1 of this Act shall become effective at noon  
3 on January 3, 2023.

4 (C) The provisions of Section 2 of this Act shall become effective at noon on  
5 January 3, 2023.

6 (D) The provisions of this Section and Sections 3 and 4 of this Act shall become  
7 effective upon signature of this Act by the governor or, if not signed by the governor, upon  
8 expiration of the time for bills to become law without signature by the governor, as provided  
9 in Article III, Section 18 of the Constitution of Louisiana. If this Act is vetoed by the  
10 governor and subsequently approved by the legislature, the provisions of this Section and  
11 Sections 3 and 4 of this Act shall become effective on the day following such approval.

---

#### DIGEST

The digest printed below was prepared by House Legislative Services. It constitutes no part of the legislative instrument. The keyword, one-liner, abstract, and digest do not constitute part of the law or proof or indicia of legislative intent. [R.S. 1:13(B) and 24:177(E)]

---

HB 1 Engrossed

2022 First Extraordinary Session

Schexnayder

**Abstract:** Provides for the redistricting of the state's congressional districts and provides for the composition of each of the six congressional districts. Effective for election purposes only for the regular congressional elections in 2022 and for all other purposes at noon on Jan. 3, 2023.

Statistical summaries of proposed law, including district variances from the ideal population of 776,292 and the range of those variances, as well as maps illustrating proposed district boundaries accompany this digest. (*Attached to the bill version on the internet.*)

Present U.S. Constitution (14th Amendment) provides that representatives in congress shall be apportioned among the several states according to their respective numbers, counting the whole number of persons in each state. The U.S. Supreme Court has held that the population of congressional districts in the same state must be as nearly equal in population as practicable.

Proposed law redraws district boundaries for the six congressional districts, effective upon signature of governor or lapse of time for gubernatorial action for purposes of the 2022 election.

Proposed law retains present districts until noon on Jan. 3, 2023, at which time present law is repealed and proposed districts are effective for all other purposes.

Proposed law specifies that precincts referenced in district descriptions are those precincts identified as Voting Districts (VTDs) in the 2020 Census Redistricting TIGER/Line Shapefiles for the state of La. as validated through the data verification program of the La. legislature. Also specifies that if any such precinct has been subdivided by action of the

parish governing authority on a nongeographic basis or subdivided by action of the parish governing authority on a geographic basis in accordance with present law, the enumeration of the general precinct designation shall include all nongeographic and all geographic subdivisions thereof. Further provides that the territorial limits of the districts as enacted shall continue in effect until changed by law regardless of any subsequent change made to the precincts by the parish governing authority.

Proposed law specifies that proposed law does not reduce the term of office of any person holding any position or office on the effective date of proposed law for which the appointment or election is based upon a congressional district as composed pursuant to present law. Specifies that any position or office filled after Jan. 3, 2023, for which the appointment or election is based on a congressional district shall be appointed or elected from a district as it is described in proposed law.

Population data in the summaries accompanying this digest are derived from 2020 Census Redistricting Data (Public Law 94-171), Summary File for Louisiana. Population data, statistical information, and maps are supplied for purposes of information and analysis and comprise no part of proposed law.

Effective for election purposes only for the regular congressional elections in 2022; effective for all other purposes at noon on Jan. 3, 2023.

(Adds R.S. 18:1276; Repeals R.S. 18:1276.1)



# Plan Statistics

## Plan: HB1 Engrossed (Schexnayder) 221ES-2

<u>Districts:</u>	<u># of Members</u>	<u>Actual Population</u>	<u>Ideal Population</u>	<u>Absolute Deviation</u>	<u>Relative Deviation</u>
District 1	1	776,288	776,292	-4	-0.001%
District 2	1	776,293	776,292	1	0.000%
District 3	1	776,275	776,292	-17	-0.002%
District 4	1	776,321	776,292	29	0.004%
District 5	1	776,275	776,292	-17	-0.002%
District 6	1	776,305	776,292	13	0.002%
<b>Grand Total:</b>	<b>6</b>	<b>4,657,757</b>	<b>4,657,752</b>		

Ideal Population Per Member:	776292	
Number of Districts for Plan Type:	6	
Range of District Populations:	776,275	to 776,321
Absolute Mean Deviation:	8	
Absolute Range:	-17	to 29
Absolute Overall Range:	46	
Relative Mean Deviation:	0.00%	
Relative Range:	0.00%	to 0.00%
Relative Overall Range:	0.00%	

<b><i>Ideal - Actual:</i></b>	<b>-5</b>
<b><i>Remainder:</i></b>	<b>5</b>
<b><i>Unassigned Population:</i></b>	<b>0</b>

# Total Population

Plan: HB1 Engrossed (Schexnayder) 221ES-2

	Total Population	Total White	Total Black	Total Asian	Total American Indian	Total Other	Total Hispanic	VAP Total	VAP White	VAP Black	VAP Asian	VAP American Indian	VAP Other	VAP Hispanic Total
District 1	776,288	537,983	116,701	24,434	22,736	74,434	93,082	601,549	432,516	81,775	17,986	16,150	53,122	65,531
	100.000%	69.302%	15.033%	3.148%	2.929%	9.588%	11.991%	100.000%	71.900%	13.594%	2.990%	2.685%	8.831%	10.894%
District 2	776,293	218,067	473,978	23,727	8,188	52,333	67,702	600,015	184,800	352,563	18,931	6,367	37,354	47,363
	100.000%	28.091%	61.057%	3.056%	1.055%	6.741%	8.721%	100.000%	30.799%	58.759%	3.155%	1.061%	6.226%	7.894%
District 3	776,275	508,115	205,820	16,256	11,306	34,778	41,065	586,488	398,253	144,434	11,650	8,287	23,864	27,487
	100.000%	65.456%	26.514%	2.094%	1.456%	4.480%	5.290%	100.000%	67.905%	24.627%	1.986%	1.413%	4.069%	4.687%
District 4	776,321	438,493	276,844	12,936	18,995	29,053	36,371	591,382	348,175	199,057	9,393	14,241	20,516	24,950
	100.000%	56.483%	35.661%	1.666%	2.447%	3.742%	4.685%	100.000%	58.875%	33.660%	1.588%	2.408%	3.469%	4.219%
District 5	776,275	459,595	273,524	7,843	11,916	23,397	28,238	597,284	367,334	197,336	6,102	9,057	17,455	20,613
	100.000%	59.205%	35.235%	1.010%	1.535%	3.014%	3.638%	100.000%	61.501%	33.039%	1.022%	1.516%	2.922%	3.451%
District 6	776,305	495,399	196,252	22,092	13,919	48,643	56,091	593,830	393,433	140,604	16,354	10,138	33,301	37,718
	100.000%	63.815%	25.280%	2.846%	1.793%	6.266%	7.225%	100.000%	66.253%	23.677%	2.754%	1.707%	5.608%	6.352%
Grand Total	4,657,757	2,657,652	1,543,119	107,288	87,060	262,638	322,549	3,570,548	2,124,511	1,115,769	80,416	64,240	185,612	223,662
	100.000%	57.059%	33.130%	2.303%	1.869%	5.639%	6.925%	100.000%	59.501%	31.249%	2.252%	1.799%	5.198%	6.264%

# Voter Registration

Plan: HB1 Engrossed (Schexnayder) 221ES-2

	Reg Total Dec 2021	Reg White Dec 2021	Reg Black Dec 2021	Reg Other Dec 2021	Reg Dem Total Dec 2021	Reg Rep Total Dec 2021	Reg Other Total Dec 2021
District 1	489,126	388,604	56,870	43,652	137,925	203,404	147,797
	81.311%	79.449%	11.627%	8.924%	28.198%	41.585%	30.217%
District 2	495,171	151,791	304,309	39,071	313,201	58,654	123,316
	82.526%	30.654%	61.455%	7.890%	63.251%	11.845%	24.904%
District 3	479,827	344,683	114,946	20,198	168,883	180,513	130,431
	81.814%	71.835%	23.956%	4.209%	35.197%	37.620%	27.183%
District 4	470,683	290,476	158,433	21,774	184,700	167,337	118,646
	79.590%	61.714%	33.660%	4.626%	39.241%	35.552%	25.207%
District 5	484,754	309,664	162,222	12,868	197,517	172,071	115,166
	81.160%	63.881%	33.465%	2.655%	40.746%	35.497%	23.758%
District 6	474,785	342,771	105,968	26,046	158,778	186,801	129,206
	79.953%	72.195%	22.319%	5.486%	33.442%	39.344%	27.214%
<b>Grand Total</b>	<b>2,894,346</b>	<b>1,827,989</b>	<b>902,748</b>	<b>163,609</b>	<b>1,161,004</b>	<b>968,780</b>	<b>764,562</b>

# Splits

## Plan: HB1 Engrossed (Schexnayder) 221ES-2

	Total Population	Total White	Total Black	Total Asian	Total American Indian	Total Other	VAP Total	VAP White	VAP Black	VAP Asian	VAP American Indian	VAP Other	Reg Total Dec 2021	Reg White Dec 2021	Reg Black Dec 2021	Reg Other Dec 2021
District 1																
*Jefferson	240,887	155,928	31,112	11,891	4,421	37,535	192,684	130,249	22,749	8,966	3,340	27,380	148,329	116,351	12,947	19,031
*Lafourche	50,164	38,752	4,617	576	3,219	3,000	38,052	30,550	2,984	425	2,127	1,966	29,354	25,495	2,151	1,708
*Orleans	52,319	41,517	4,426	2,099	616	3,661	43,221	34,590	3,737	1,622	487	2,785	35,637	30,059	1,884	3,694
Plaquemines	23,515	14,287	5,428	1,317	697	1,786	17,334	10,856	3,857	925	500	1,196	13,908	9,513	3,134	1,261
St. Bernard	43,764	24,497	12,309	1,381	947	4,630	31,775	18,992	7,944	982	688	3,169	25,653	18,233	5,497	1,923
St. Tammany	264,570	196,641	38,643	5,774	5,660	17,852	202,228	154,621	26,761	4,075	4,161	12,610	178,779	145,724	21,142	11,913
*Tangipahoa	39,695	28,967	7,279	473	968	2,008	29,975	22,597	4,969	311	699	1,399	23,462	19,013	3,462	987
*Terrebonne	61,374	37,394	12,887	923	6,208	3,962	46,280	30,061	8,774	680	4,148	2,617	34,004	24,216	6,653	3,135
District 1	776,288	537,983	116,701	24,434	22,736	74,434	601,549	432,516	81,775	17,986	16,150	53,122	489,126	388,604	56,870	43,652
	100.000%	69.302%	15.033%	3.148%	2.929%	9.588%	100.000%	71.900%	13.594%	2.990%	2.685%	8.831%	81.311%	79.449%	11.627%	8.924%
District 2																
*Ascension	20,892	5,625	13,842	140	170	1,115	15,426	4,672	9,766	104	113	771	13,180	3,868	8,794	518
*Assumption	6,710	2,870	3,622	23	44	151	5,270	2,334	2,764	15	33	124	4,756	1,997	2,702	57
*East Baton Rouge	94,325	5,624	85,793	483	369	2,056	70,960	5,094	63,632	382	289	1,563	58,983	2,990	54,254	1,739
*Iberville	21,073	8,453	11,316	173	147	984	16,631	7,182	8,363	125	114	847	13,630	5,355	7,955	320
*Jefferson	199,894	65,007	95,105	11,133	3,265	25,384	151,970	53,886	69,426	8,726	2,495	17,437	114,772	43,265	56,629	14,878
*Orleans	331,678	84,945	214,543	10,757	3,050	18,383	262,975	75,662	162,331	8,898	2,461	13,623	220,607	61,927	139,641	19,039
*St. Charles	34,943	21,021	11,091	501	610	1,720	26,288	16,352	7,957	307	457	1,215	23,249	15,046	7,109	1,094
St. James	20,192	9,973	9,762	60	82	315	15,505	7,883	7,297	31	64	230	14,966	7,254	7,501	211
*St. John the Baptist	32,678	8,833	21,557	244	303	1,741	24,826	7,363	15,831	183	235	1,214	22,433	6,282	15,109	1,042
*West Baton Rouge	13,908	5,716	7,347	213	148	484	10,164	4,372	5,196	160	106	330	8,595	3,807	4,615	173
District 2	776,293	218,067	473,978	23,727	8,188	52,333	600,015	184,800	352,563	18,931	6,367	37,354	495,171	151,791	304,309	39,071
	100.000%	28.091%	61.057%	3.056%	1.055%	6.741%	100.000%	30.799%	58.759%	3.155%	1.061%	6.226%	82.526%	30.654%	61.455%	7.890%
District 3																
Acadia	57,576	44,480	10,864	238	573	1,421	42,943	34,071	7,383	173	400	916	37,678	30,555	6,407	716
Calcasieu	216,785	139,772	59,386	4,702	3,536	9,389	163,166	108,789	41,898	3,359	2,604	6,516	120,511	85,659	29,513	5,339
Cameron	5,617	5,232	125	30	75	155	4,358	4,100	79	23	47	109	4,789	4,610	88	91
Iberia	69,929	39,206	24,556	2,123	794	3,250	52,791	31,295	17,069	1,562	581	2,284	44,526	28,287	14,352	1,887
Jefferson Davis	32,250	25,066	5,837	183	472	692	24,039	19,121	4,006	111	325	476	20,013	16,350	3,202	461
Lafayette	241,753	153,363	65,136	6,454	3,210	13,590	183,875	121,608	45,917	4,664	2,387	9,299	153,493	108,645	36,481	8,367
*St. Martin	50,399	31,974	15,908	590	505	1,422	38,250	25,187	11,282	402	383	996	34,127	22,955	10,380	792
*St. Mary	44,607	24,545	15,198	489	1,518	2,857	34,054	19,719	11,013	319	1,072	1,931	27,921	17,117	9,529	1,275
Vermilion	57,359	44,477	8,810	1,447	623	2,002	43,012	34,363	5,787	1,037	488	1,337	36,769	30,505	4,994	1,270
District 3	776,275	508,115	205,820	16,256	11,306	34,778	586,488	398,253	144,434	11,650	8,287	23,864	479,827	344,683	114,946	20,198
	100.000%	65.456%	26.514%	2.094%	1.456%	4.480%	100.000%	67.905%	24.627%	1.986%	1.413%	4.069%	81.814%	71.835%	23.956%	4.209%

# Splits

## Plan: HB1 Engrossed (Schexnayder) 221ES-2

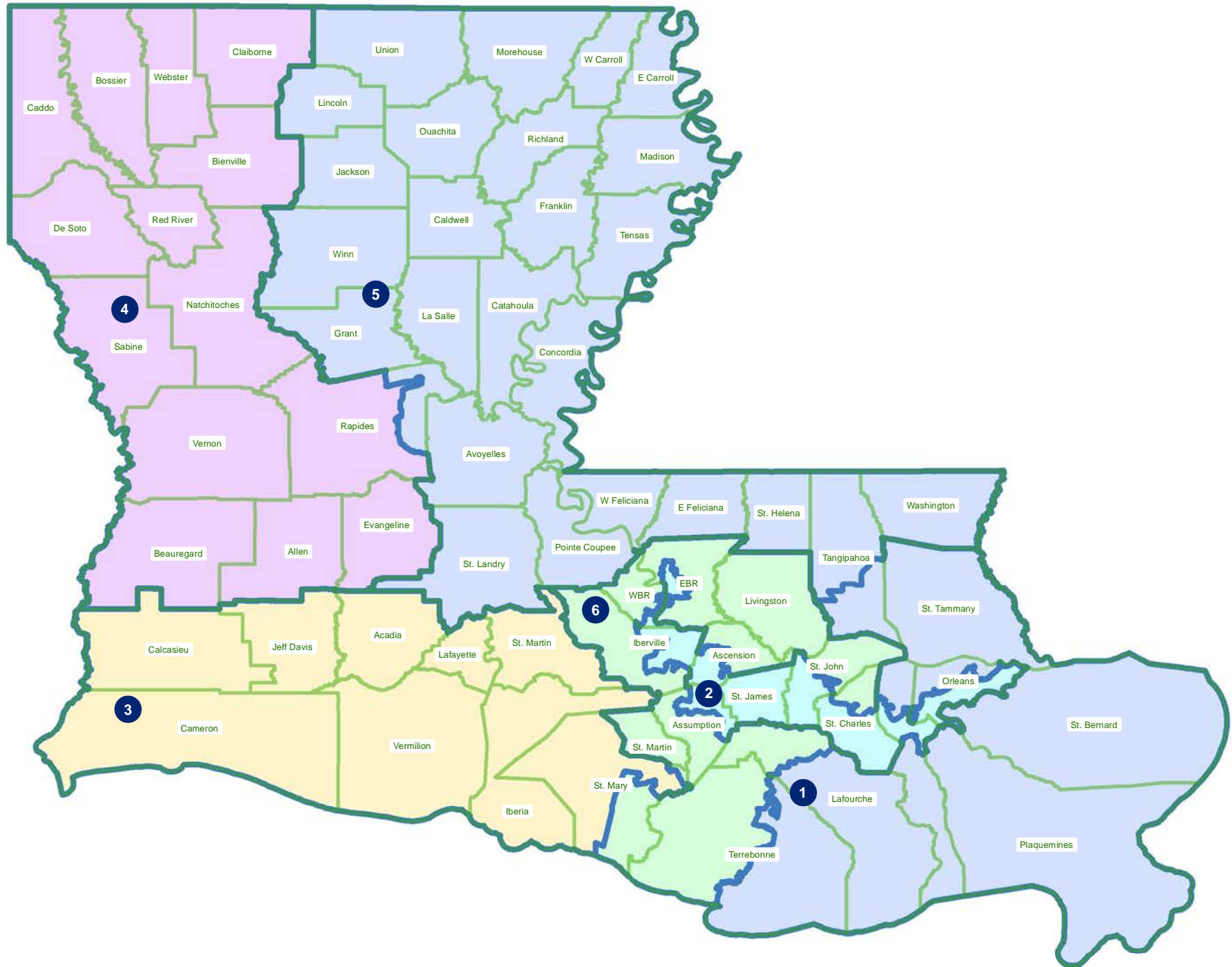
	Total Population	Total White	Total Black	Total Asian	Total American Indian	Total Other	VAP Total	VAP White	VAP Black	VAP Asian	VAP American Indian	VAP Other	Reg Total Dec 2021	Reg White Dec 2021	Reg Black Dec 2021	Reg Other Dec 2021
District 4																
Allen	22,750	16,327	4,490	246	947	740	17,510	12,751	3,275	182	646	656	12,201	9,478	2,217	506
Beauregard	36,549	29,529	4,649	402	1,052	917	27,489	22,304	3,495	269	773	648	22,294	18,771	2,369	1,154
Bienville	12,981	6,950	5,600	57	207	167	10,073	5,486	4,284	30	162	111	8,847	4,843	3,917	87
Bossier	128,746	81,052	32,551	3,492	3,273	8,378	95,876	62,931	22,440	2,448	2,477	5,580	69,743	50,861	14,838	4,044
Caddo	237,848	103,457	119,304	4,034	3,840	7,213	182,407	85,059	86,359	3,008	2,958	5,023	151,296	73,113	71,249	6,934
Claiborne	14,170	7,263	6,360	88	185	274	11,507	6,258	4,824	55	140	230	8,598	4,632	3,820	146
De Soto	26,812	15,284	9,973	117	740	698	20,440	11,909	7,425	86	557	463	18,713	11,330	6,810	573
Evangeline	32,350	21,354	9,235	241	280	1,240	24,408	16,460	6,483	187	217	1,061	20,553	14,566	5,643	344
Natchitoches	37,515	19,361	15,725	255	861	1,313	29,349	16,010	11,415	198	683	1,043	23,107	12,850	9,224	1,033
*Rapides	111,108	60,863	41,700	2,235	2,429	3,881	84,531	48,706	29,641	1,633	1,824	2,727	68,356	41,759	23,394	3,203
Red River	7,620	4,195	3,106	25	171	123	5,714	3,338	2,164	3	116	93	5,631	3,130	2,418	83
Sabine	22,155	15,036	3,861	94	2,723	441	17,064	12,054	2,655	66	1,970	319	14,547	11,023	2,184	1,340
Vernon	48,750	35,087	7,611	1,442	1,600	3,010	36,261	26,765	5,133	1,074	1,160	2,129	24,060	19,182	3,011	1,867
Webster	36,967	22,735	12,679	208	687	658	28,753	18,144	9,464	154	558	433	22,737	14,938	7,339	460
District 4	776,321	438,493	276,844	12,936	18,995	29,053	591,382	348,175	199,057	9,393	14,241	20,516	470,683	290,476	158,433	21,774
	100.000%	56.483%	35.661%	1.666%	2.447%	3.742%	100.000%	58.875%	33.660%	1.588%	2.408%	3.469%	79.590%	61.714%	33.660%	4.626%
District 5																
Avoyelles	39,693	25,625	11,678	434	767	1,189	30,578	20,269	8,311	379	570	1,049	23,426	16,534	6,294	598
Caldwell	9,645	7,646	1,632	51	150	166	7,478	5,969	1,224	46	116	123	6,031	5,124	818	89
Catahoula	8,906	5,776	2,395	46	119	570	6,951	4,557	1,736	33	87	538	6,467	4,639	1,770	58
Concordia	18,687	10,275	7,725	122	233	332	14,217	8,108	5,613	100	167	229	11,964	7,222	4,540	202
East Carroll	7,459	2,054	5,272	29	43	61	5,901	1,773	4,043	19	27	39	4,709	1,306	3,359	44
East Feliciana	19,539	11,516	7,341	91	262	329	16,183	9,740	5,918	61	198	266	13,600	7,959	5,186	455
Franklin	19,774	12,492	6,802	70	205	205	15,028	9,901	4,779	44	153	151	13,159	9,015	4,034	110
Grant	22,169	17,709	3,335	133	644	348	17,527	13,964	2,717	97	507	242	12,688	11,174	1,176	338
Jackson	15,031	9,967	4,166	175	255	468	11,783	7,967	3,125	140	174	377	9,449	6,647	2,610	192
La Salle	14,791	11,348	1,422	283	372	1,366	11,563	8,636	1,065	264	271	1,327	8,792	7,978	637	177
Lincoln	48,396	26,034	19,364	892	662	1,444	38,655	21,306	15,119	744	526	960	25,649	15,672	9,016	961
Madison	10,017	3,475	6,363	20	59	100	7,435	2,906	4,391	9	48	81	7,278	2,494	4,674	110
Morehouse	25,629	12,281	12,484	160	370	334	20,062	10,095	9,300	117	279	271	16,922	8,505	8,131	286
Ouachita	160,368	88,545	61,217	2,788	2,661	5,157	120,200	69,974	42,290	2,118	2,059	3,759	99,752	60,515	35,658	3,579
Pointe Coupee	20,758	12,395	7,504	107	159	593	16,250	10,108	5,502	91	119	430	14,675	9,320	5,121	234
*Rapides	18,915	16,647	892	193	673	510	14,261	12,667	564	153	510	367	11,820	11,073	381	366
Richland	20,043	11,785	7,603	83	258	314	15,383	9,338	5,546	66	203	230	13,662	8,470	4,961	231
St. Helena	10,920	4,527	6,031	39	134	189	8,463	3,805	4,371	28	109	150	8,321	3,628	4,565	128

# Splits

## Plan: HB1 Engrossed (Schexnayder) 221ES-2

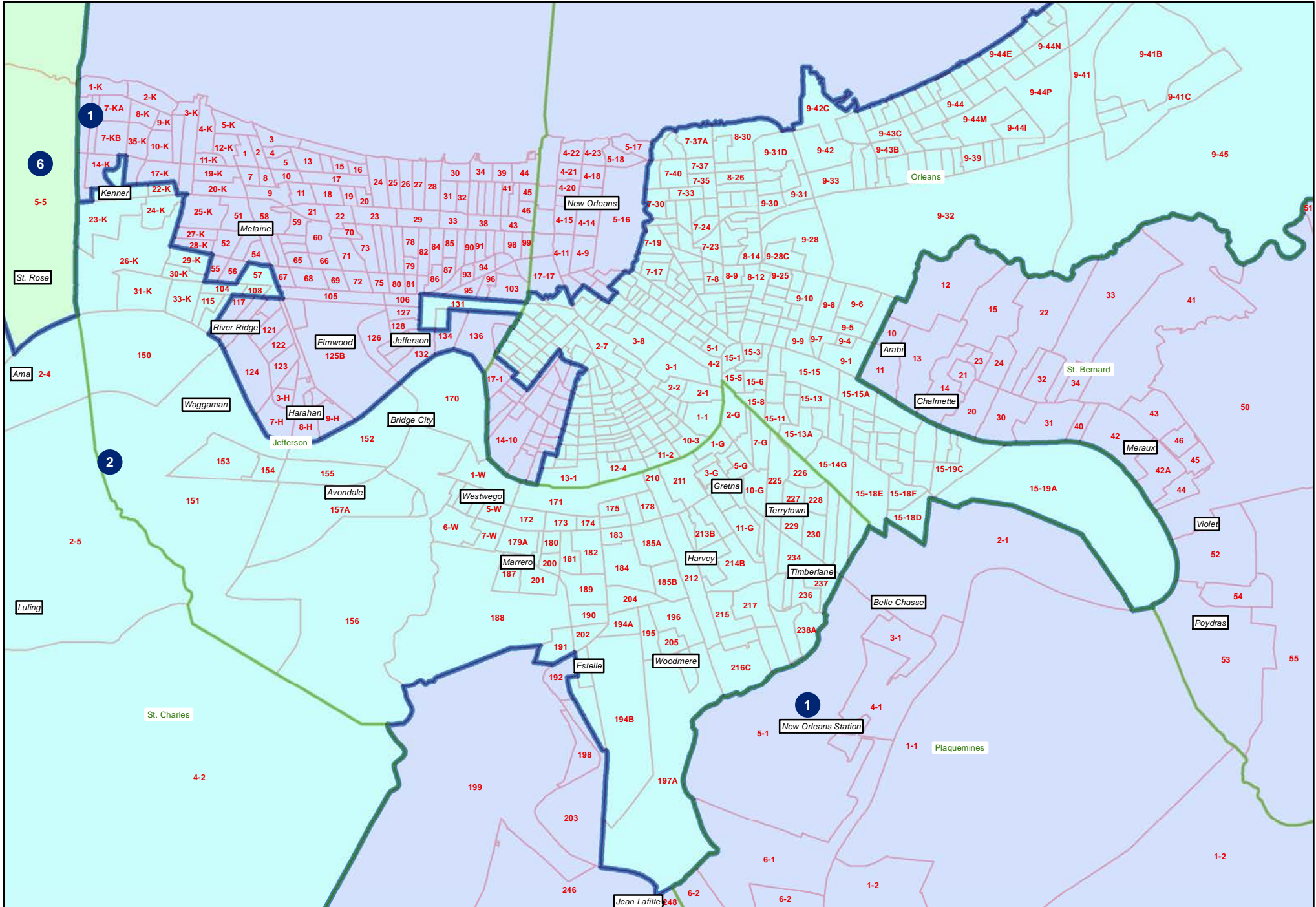
	Total Population	Total White	Total Black	Total Asian	Total American Indian	Total Other	VAP Total	VAP White	VAP Black	VAP Asian	VAP American Indian	VAP Other	Reg Total Dec 2021	Reg White Dec 2021	Reg Black Dec 2021	Reg Other Dec 2021
District 5																
St. Landry	82,540	43,611	35,836	499	636	1,958	61,811	34,209	25,497	353	451	1,301	54,482	30,093	23,005	1,384
*Tangipahoa	93,462	52,369	34,600	1,001	1,486	4,006	71,516	42,608	24,248	789	1,128	2,743	52,794	33,899	17,063	1,832
Tensas	4,147	1,744	2,312	23	26	42	3,235	1,446	1,728	12	23	26	3,455	1,503	1,917	35
Union	21,107	14,460	5,224	62	338	1,023	16,632	11,807	3,861	39	254	671	15,221	11,066	3,692	463
Washington	45,463	29,943	13,434	216	736	1,134	34,951	23,743	9,732	154	561	761	27,587	18,835	8,102	650
West Carroll	9,751	7,894	1,425	27	180	225	7,532	6,223	1,010	20	136	143	7,038	5,913	1,040	85
West Feliciana	15,310	10,883	3,740	89	225	373	12,783	9,283	2,951	56	174	319	7,407	5,092	2,180	135
Winn	13,755	8,594	3,727	210	263	961	10,906	6,932	2,695	170	207	902	8,406	5,988	2,292	126
District 5	776,275	459,595	273,524	7,843	11,916	23,397	597,284	367,334	197,336	6,102	9,057	17,455	484,754	309,664	162,222	12,868
	100.000%	59.205%	35.235%	1.010%	1.535%	3.014%	100.000%	61.501%	33.039%	1.022%	1.516%	2.922%	81.160%	63.881%	33.465%	2.655%
District 6																
*Ascension	105,608	75,516	18,374	2,160	1,834	7,724	76,531	56,464	12,373	1,410	1,277	5,007	66,737	52,932	10,020	3,785
*Assumption	14,329	10,852	2,598	73	214	592	11,346	8,811	1,943	42	164	386	9,683	7,703	1,808	172
*East Baton Rouge	362,456	190,445	127,605	15,942	4,358	24,106	284,652	158,787	93,158	12,217	3,458	17,032	220,281	135,242	70,421	14,618
*Iberville	9,168	6,380	2,414	29	127	218	7,455	5,280	1,869	24	107	175	6,832	4,777	1,942	113
*Lafourche	47,393	32,958	11,238	449	1,005	1,743	36,567	26,288	8,093	313	650	1,223	28,924	22,972	5,013	939
Livingston	142,282	116,855	12,658	1,697	3,111	7,961	105,141	88,432	8,136	1,099	2,311	5,163	84,568	76,062	5,425	3,081
*St. Charles	17,606	12,529	2,837	336	315	1,589	13,253	9,802	1,933	222	210	1,086	11,736	9,263	1,688	785
*St. John the Baptist	9,799	5,044	3,639	159	162	795	7,677	4,259	2,606	140	115	557	6,480	3,937	2,125	418
*St. Martin	1,368	1,285	13	7	34	29	1,154	1,091	11	5	30	17	993	979	1	13
*St. Mary	4,799	2,404	793	346	152	1,104	3,467	1,875	507	274	101	710	2,289	1,595	362	332
*Terrebonne	48,206	32,540	10,260	820	2,429	2,157	36,225	25,570	7,022	559	1,602	1,472	27,716	21,179	4,913	1,624
*West Baton Rouge	13,291	8,591	3,823	74	178	625	10,362	6,774	2,953	49	113	473	8,546	6,130	2,250	166
District 6	776,305	495,399	196,252	22,092	13,919	48,643	593,830	393,433	140,604	16,354	10,138	33,301	474,785	342,771	105,968	26,046
	100.000%	63.815%	25.280%	2.846%	1.793%	6.266%	100.000%	66.253%	23.677%	2.754%	1.707%	5.608%	79.953%	72.195%	22.319%	5.486%

HB1 Engrossed (Schexnayder) 221ES-2  
Statewide



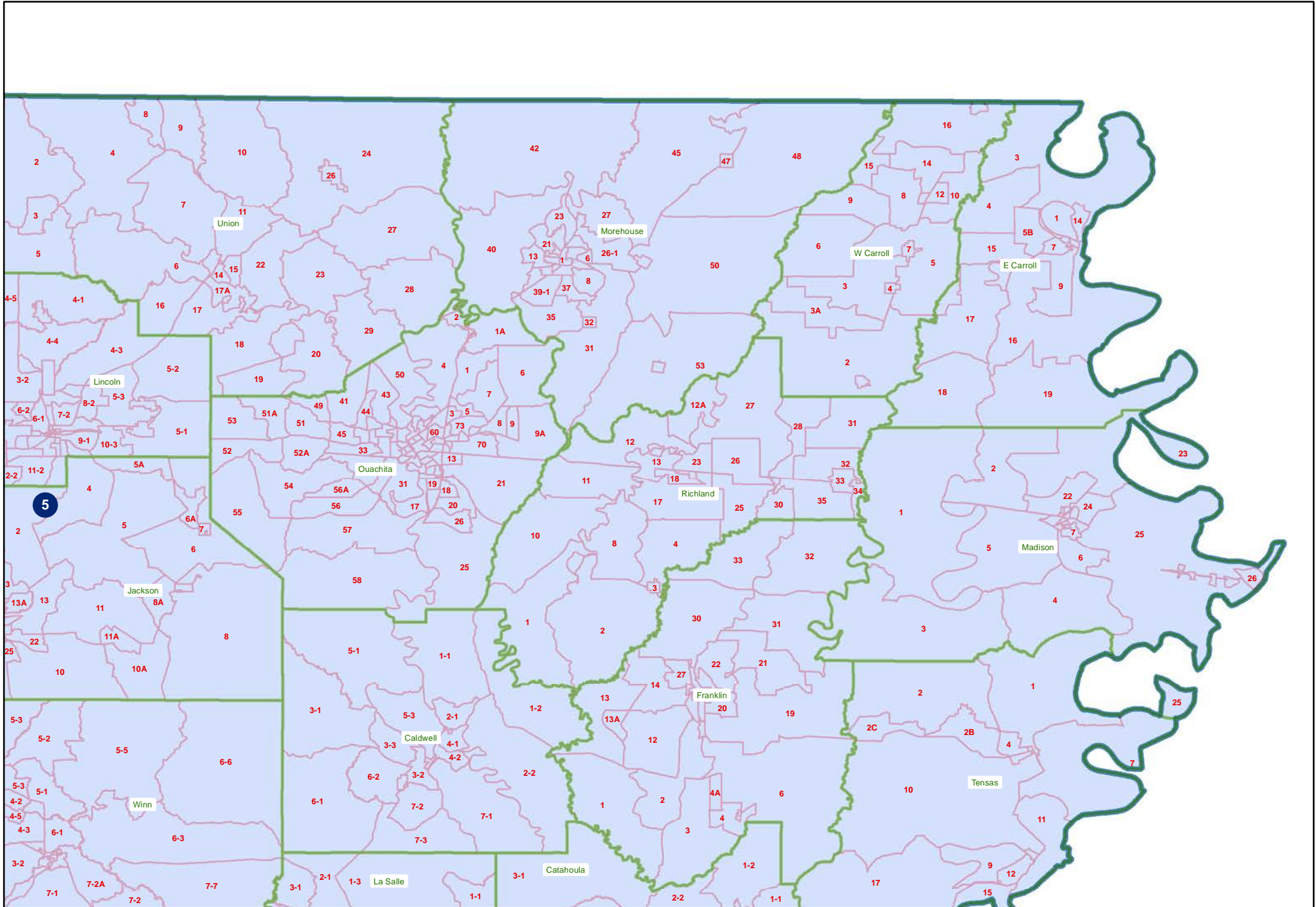
# HB1 Engrossed (Schexnayder) 221ES-2

## Orleans and Jefferson

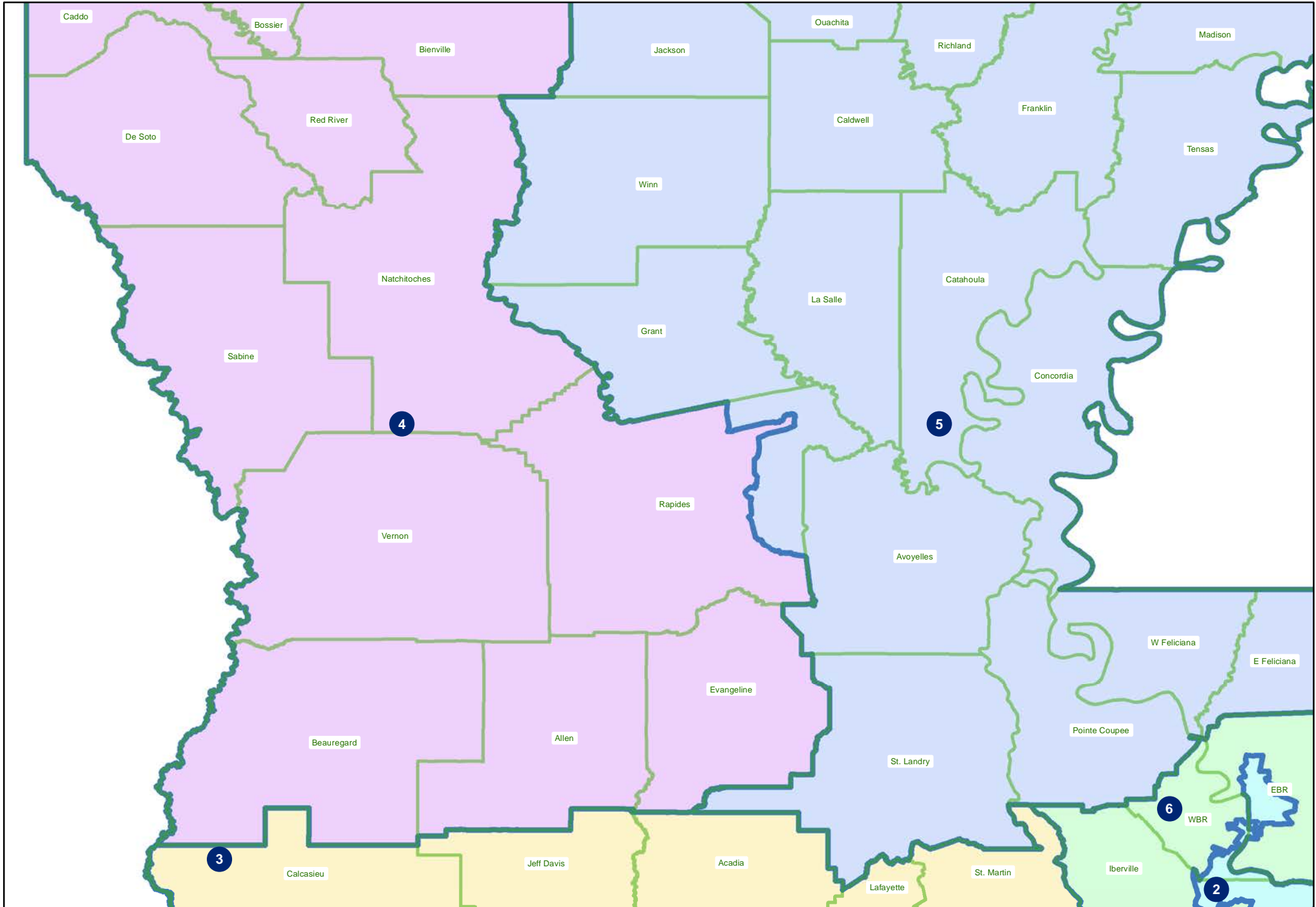




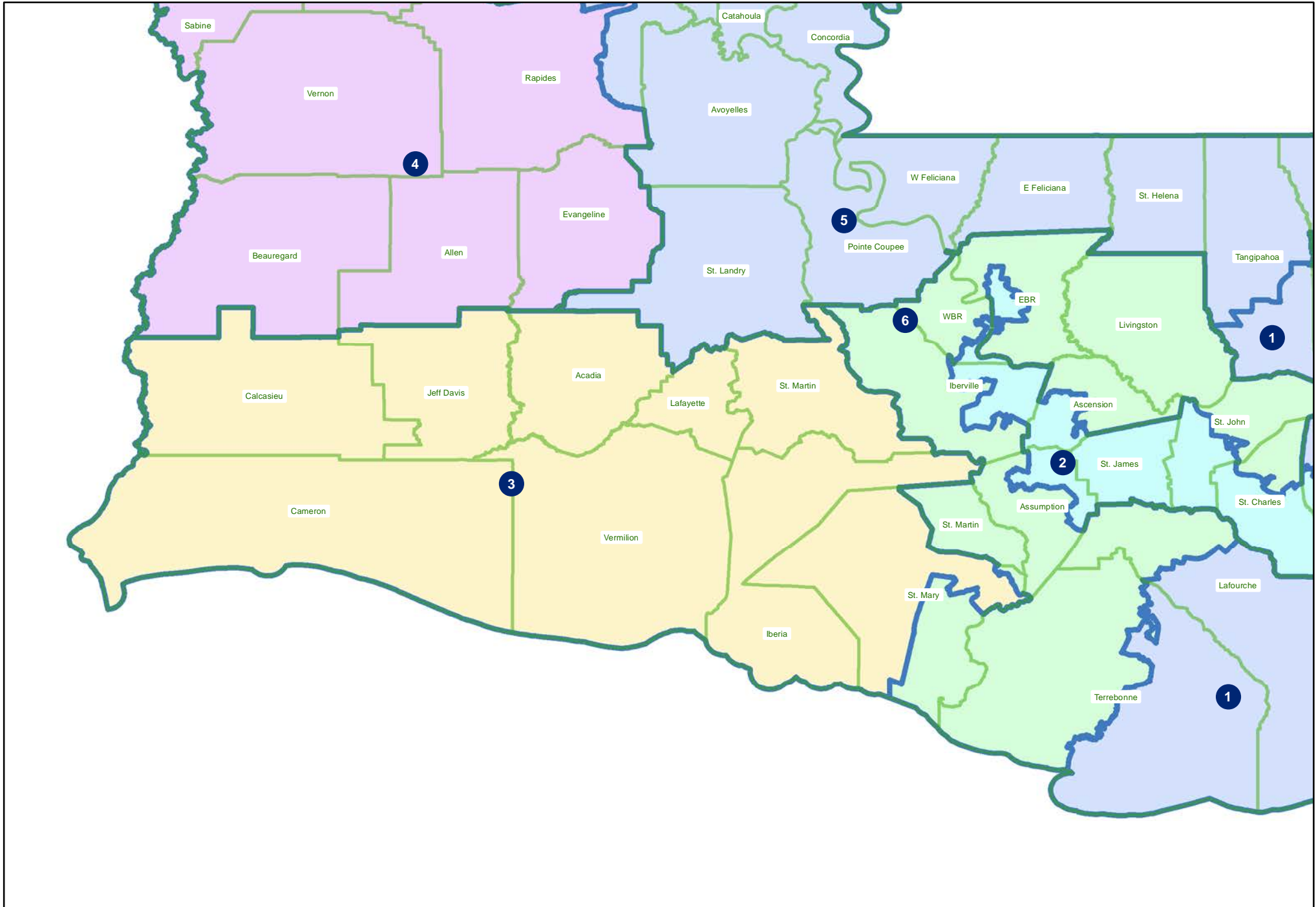
HB1 Engrossed (Schexnayder) 221ES-2  
Northeast



HB1 Engrossed (Schexnayder) 221ES-2  
Central

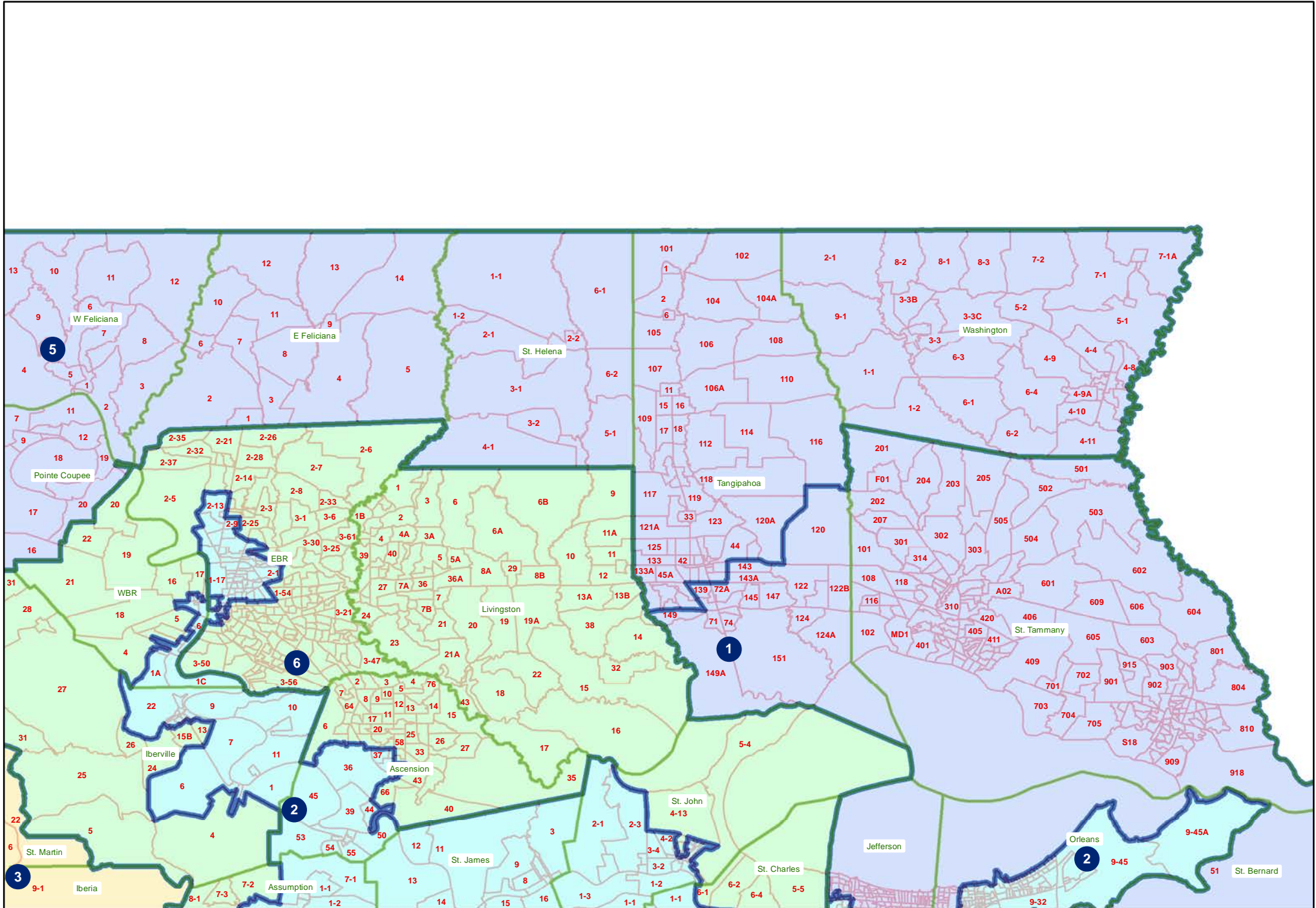


HB1 Engrossed (Schexnayder) 221ES-2  
Southwest

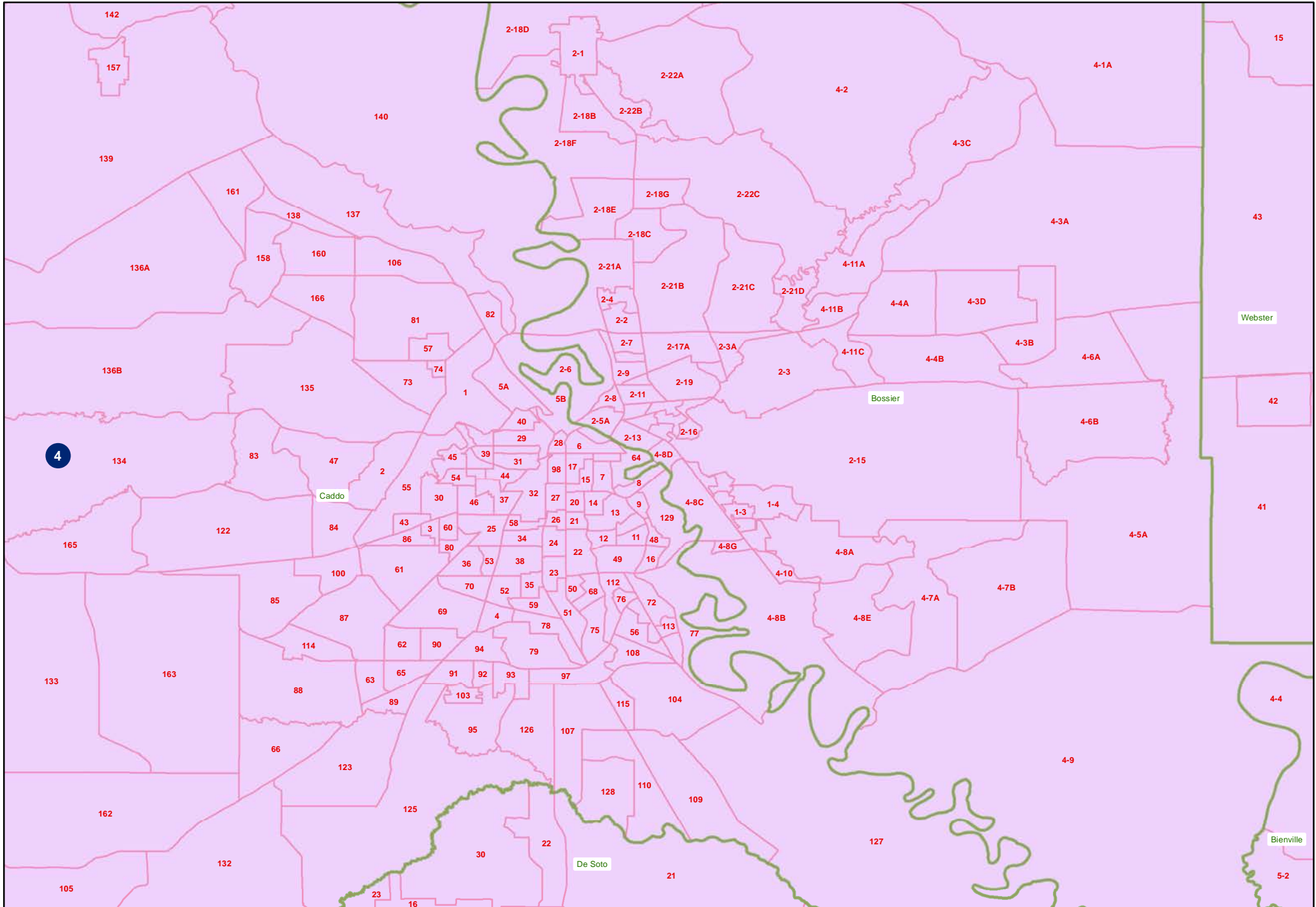




HB1 Engrossed (Schexnayder) 221ES-2  
Florida Parishes

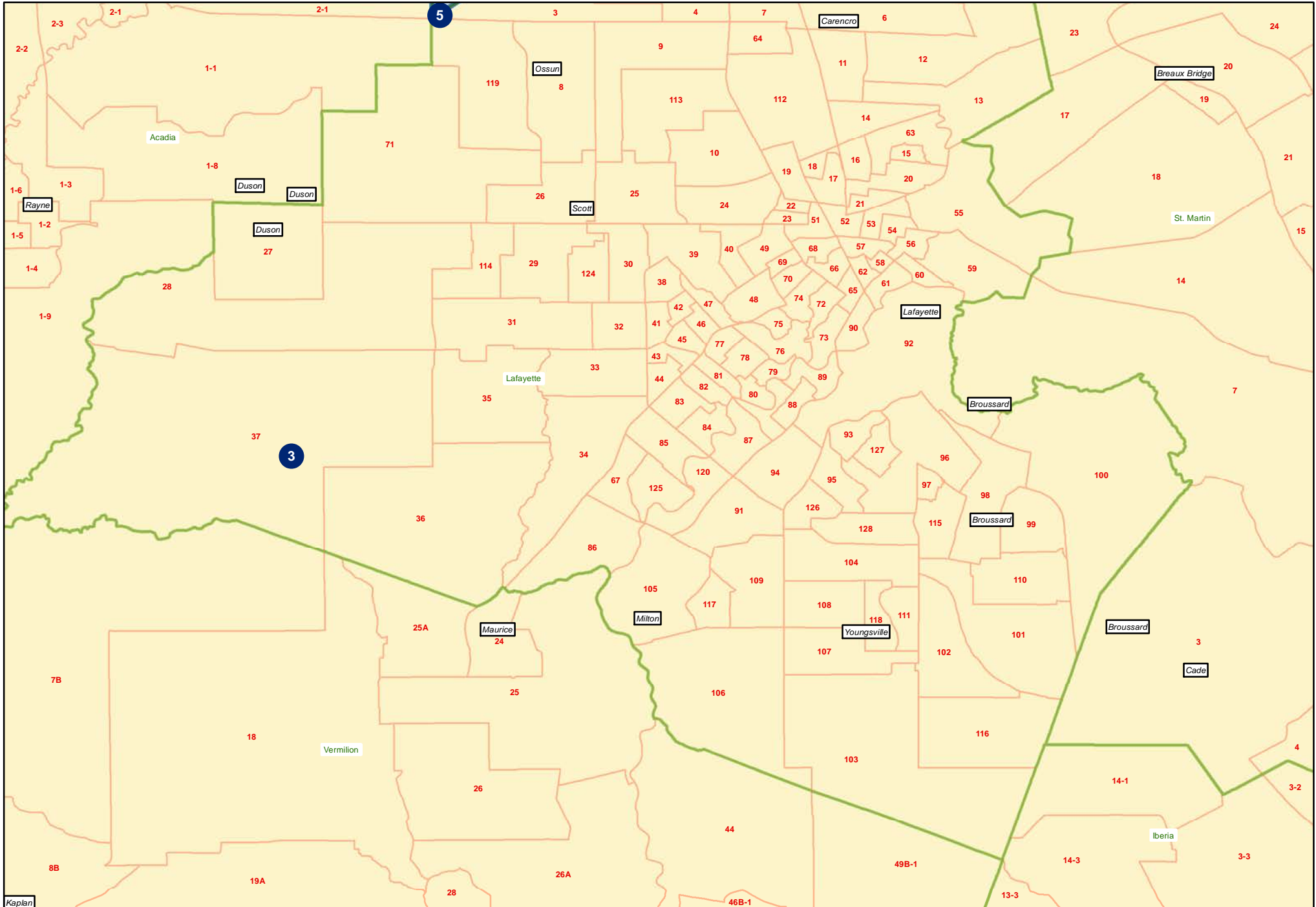


# HB1 Engrossed (Schexnayder) 221ES-2 Shreveport

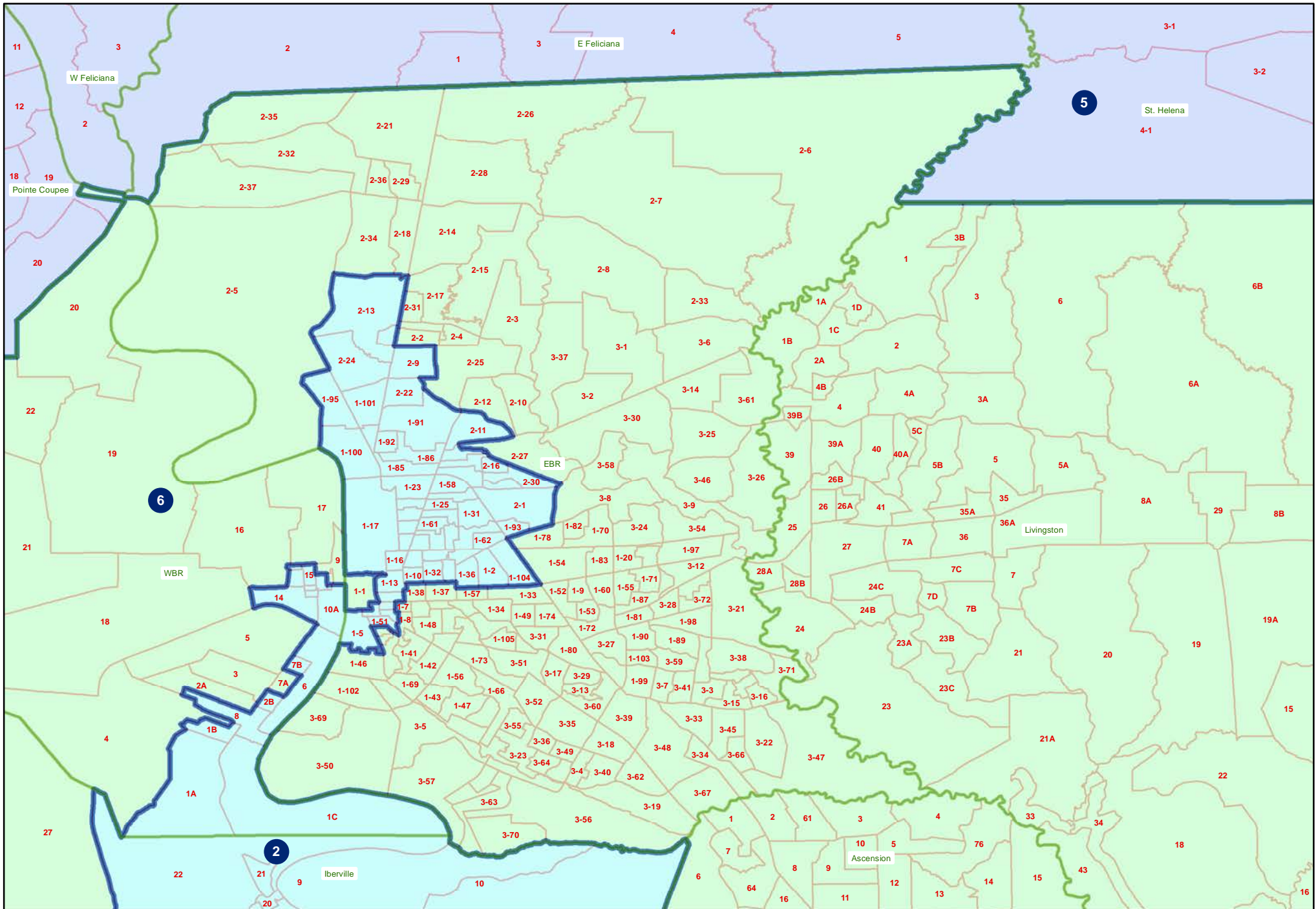




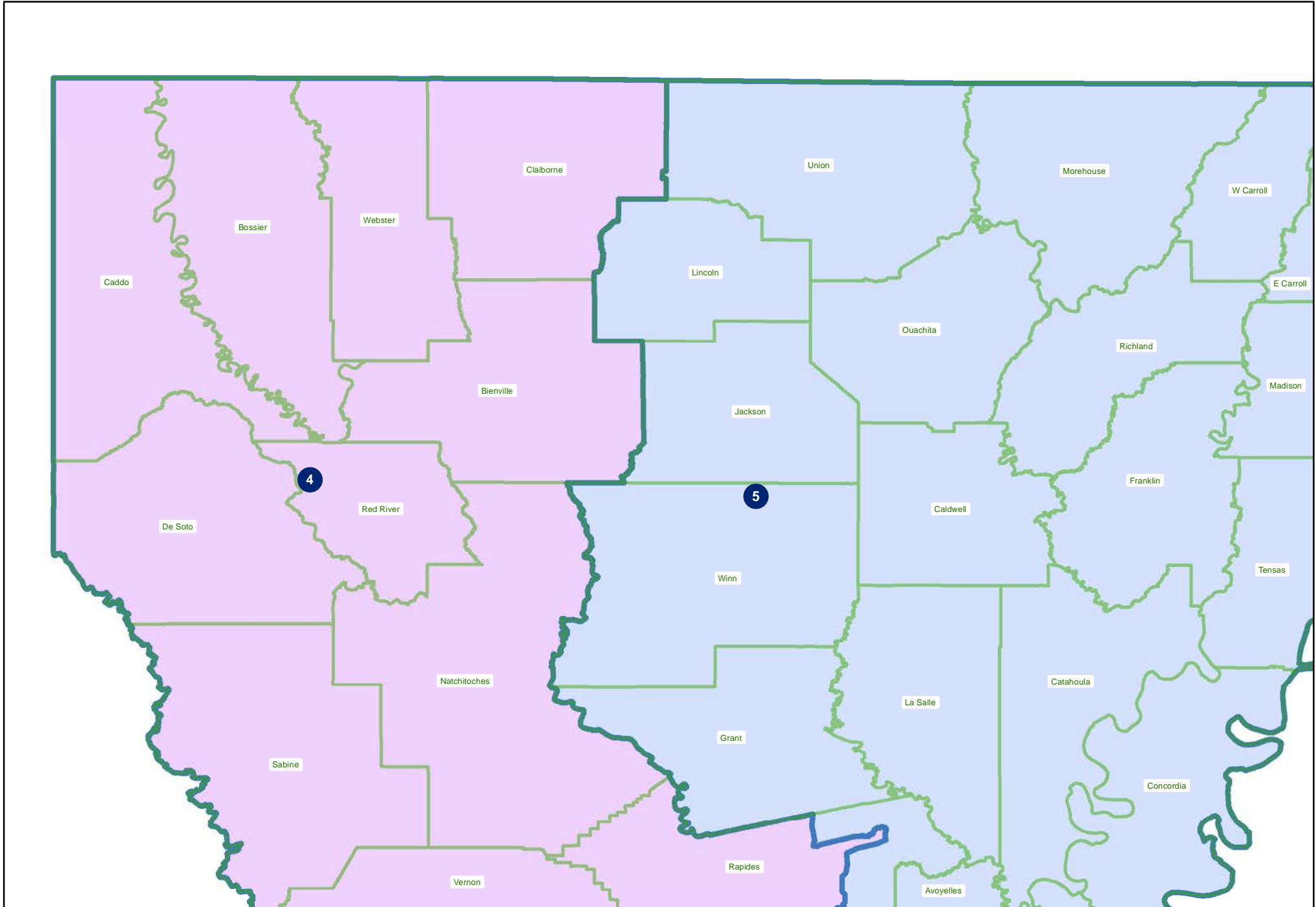
# HB1 Engrossed (Schexnayder) 221ES-2 Lafayette



# HB1 Engrossed (Schexnayder) 221ES-2 Baton Rouge

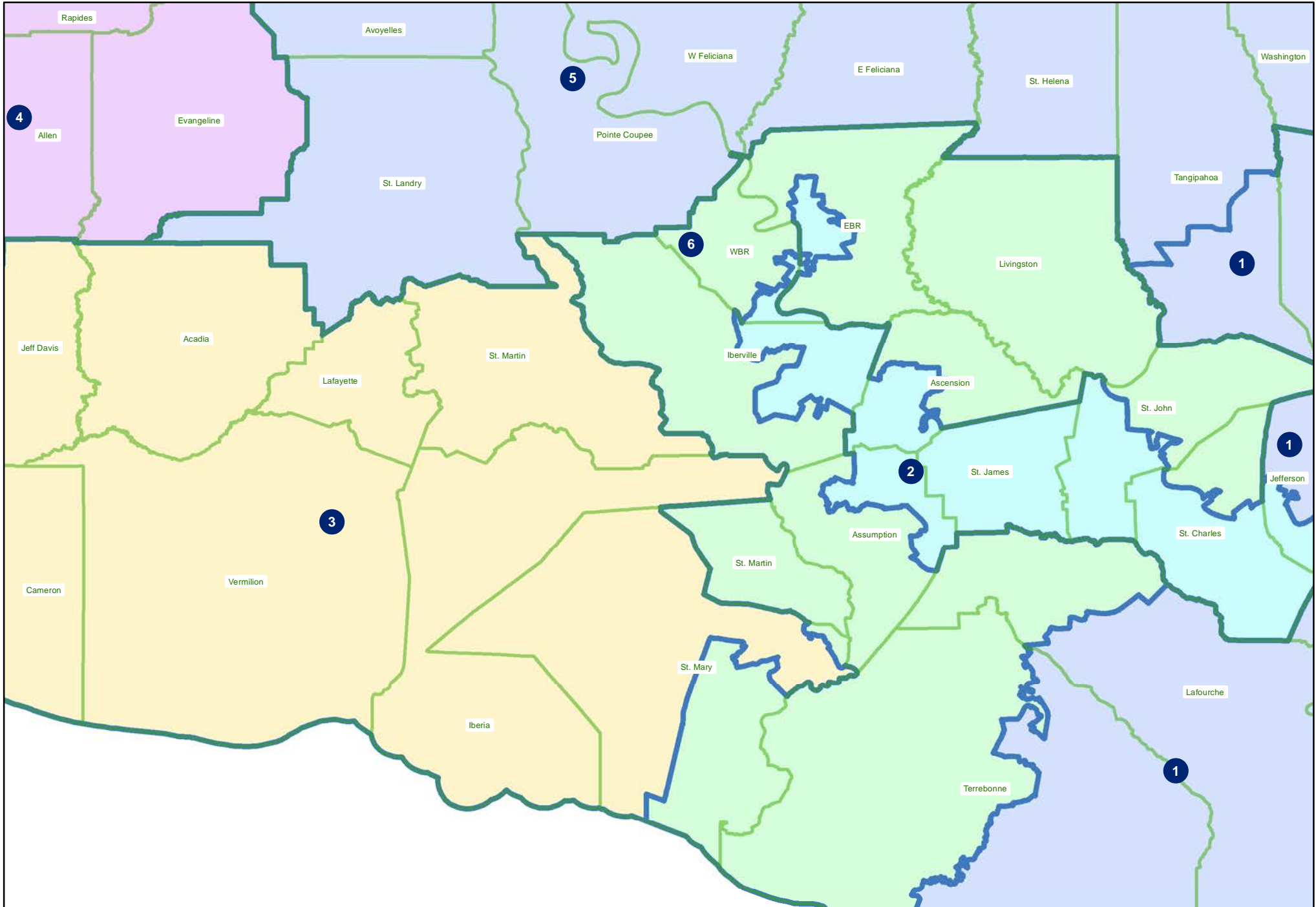


HB1 Engrossed (Schexnayder) 221ES-2  
Northwest





HB1 Engrossed (Schexnayder) 221ES-2  
Acadiana



# HB1 Engrossed (Schexnayder) 221ES-2 Monroe

