

HOUSE COMMITTEE AMENDMENTS

2022 First Extraordinary Session

Amendments proposed by House Committee on House and Governmental Affairs to Engrossed Senate Bill No. 14 by Senator Cortez

AMENDMENT NO. 1

On page 1, delete lines 13 through 17 and delete page 2 and on page 3, delete lines 1 through 25 and insert the following:

"(1) District 1 is composed of Precincts 1, 2, 3, 4, 5, 7, 8, 9, 10, 11, 12, 13, 14, 15, 16, 17, 18, 19, 20, 21, 22, 23, 24, 25, 26, 27, 28, 29, 30, 31, 32, 33, 34, 35, 36, 37, 38, 39, 40, 41, 42, 43, 44, 45, 46, 51, 52, 53, 54, 55, 56, 58, 59, 60, 61, 62, 63, 64, 65, 66, 67, 68, 69, 70, 71, 72, 73, 74, 75, 76, 77, 78, 79, 80, 81, 82, 83, 84, 85, 86, 87, 88, 89, 90, 91, 92, 93, 94, 95, 96, 97, 98, 99, 100, 101, 102, 103, 105, 106, 116, 117, 118, 119, 120, 121, 122, 123, 124, 125A, 125B, 126, 127, 128, 129, 130, 132, 134, 136, 138, 170, 171, 172, 175, 176, 177, 178, 179A, 182, 183, 184, 185A, 189, 190, 204, 1-H, 2-H, 3-H, 4-H, 5-H, 6-H, 7-H, 8-H, 9-H, 1-K, 2-K, 3-K, 4-K, 5-K, 6-KA, 6-KB, 7-KA, 7-KB, 8-K, 9-K, 10-K, 11-K, 12-K, 13-KA, 14-K, 16-K, 17-K, 18-K, 19-K, 20-K, 25-K, 27-K, 28-K, 29-K, 34-K, 35-K, 1-W, 3-W, 4-W, 5-W, 6-W, and 7-W of Jefferson Parish; Precincts 3-20, 4-7, 4-8, 4-9, 4-11, 4-14, 4-15, 4-17, 4-17A, 4-18, 4-20, 4-21, 4-22, 4-23, 5-15, 5-16, 5-17, 5-18, 7-41, 7-42, 13-4, 13-6, 13-7, 13-8, 13-9, 13-10, 14-1, 14-2, 14-3, 14-4, 14-5, 14-6, 14-7, 14-8, 14-9, 14-10, 14-11, 14-12, 14-13A, 14-14, 14-15, 14-16, 14-17, 14-18A, 14-19, 14-20, 14-21, 16-1, 16-1A, 16-2, 17-1, 17-17, 17-18, 17-18A, 17-19, and 17-20 of Orleans Parish; and St. Tammany Parish.

(2) District 2 is composed of Precincts 1-1, 1-2, 2-1, 2-2, 2-5, 4-1, 4-2, 4-3, 5-1, 5-5, 6-1, 6-2, 6-3, and 7-1 of Assumption Parish; Precincts 57, 104, 108, 115, 131, 133, 150, 151, 152, 153, 154, 155, 156, 157A, 157B, 173, 174, 179B, 180, 181, 185B, 187, 188, 191, 194A, 195, 196, 197A, 197B, 200, 201, 202, 205, 210, 211, 212, 213A, 213B, 213C, 214A, 214B, 215, 216A, 216B, 216C, 217, 225, 232A, 232B, 1-G, 2-G, 4-G, 6-G, 7-G, 13-KB, 15-K, 21-K, 22-K, 23-K, 24-K, 26-K, 30-K, 31-K, 33-K, and 2-W of Jefferson Parish; Precincts 1-1, 1-2, 1-5, 1-6, 2-1, 2-2, 2-4, 2-6, 2-7, 3-1, 3-8, 3-9, 3-12, 3-14, 3-15, 3-18, 3-19, 4-2, 4-3, 4-5, 4-6, 5-1, 5-2, 5-3, 5-5, 5-7, 5-8, 5-9, 5-10, 5-11, 5-12, 5-13, 6-1, 6-2, 6-4, 6-6, 6-7, 6-8, 6-9, 7-1, 7-2, 7-4, 7-5, 7-6, 7-7, 7-8, 7-9A, 7-10, 7-11, 7-12, 7-13, 7-14, 7-15, 7-16, 7-17, 7-18, 7-19, 7-20, 7-21, 7-23, 7-24, 7-25, 7-25A, 7-26, 7-27, 7-27B, 7-28, 7-28A, 7-29, 7-30, 7-32, 7-33, 7-35, 7-37, 7-37A, 7-40, 8-1, 8-2, 8-4, 8-6, 8-7, 8-8, 8-9, 8-12, 8-13, 8-14, 8-15, 8-19, 8-20, 8-21, 8-22, 8-23, 8-24, 8-25, 8-26, 8-27, 8-28, 8-30, 9-1, 9-3, 9-4, 9-5, 9-6, 9-7, 9-8, 9-9, 9-10, 9-11, 9-12, 9-13, 9-14, 9-15, 9-16, 9-17, 9-19, 9-21, 9-23, 9-25, 9-26, 9-28, 9-28C, 9-29, 9-30, 9-30A, 9-31, 9-31A, 9-31B, 9-31D, 9-32, 9-33, 9-34A, 9-35, 9-35A, 9-36, 9-36B, 9-37, 9-38, 9-38A, 9-39, 9-39B, 9-40, 9-40A, 9-40C, 9-41, 9-41A, 9-41B, 9-41C, 9-41D, 9-42, 9-42C, 9-43A, 9-43B, 9-43C, 9-43E, 9-43F, 9-43G, 9-43H, 9-43I, 9-43J, 9-43K, 9-43L, 9-43M, 9-43N, 9-44, 9-44A, 9-44B, 9-44D, 9-44E, 9-44F, 9-44G, 9-44I, 9-44J, 9-44L, 9-44M, 9-44N, 9-44O, 9-44P, 9-44Q, 9-45, 9-45A, 10-3, 10-6, 10-7, 10-8, 10-9, 10-11, 10-12, 10-13, 10-14, 11-2, 11-3, 11-4, 11-5, 11-8, 11-9, 11-10, 11-11, 11-12, 11-13, 11-14, 11-17, 12-1, 12-2, 12-3, 12-4, 12-5, 12-6, 12-7, 12-8, 12-9, 12-10, 12-11, 12-12, 12-13, 12-14, 12-16, 12-17, 12-19, 13-1, 13-2, 13-3, 13-5, 13-11, 13-12, 13-13, 13-14, 13-15, 13-16, 14-23, 14-24A, 14-25, 14-26, 15-1, 15-2, 15-3, 15-5, 15-6, 15-8, 15-9, 15-10, 15-11, 15-12, 15-12A, 15-13, 15-13A, 15-13B, 15-14, 15-14A, 15-14B, 15-14C, 15-14D, 15-14E, 15-14F, 15-14G, 15-15, 15-15A, 15-15B, 15-16, 15-17, 15-17A, 15-17B, 15-18, 15-18A, 15-18B, 15-18C, 15-18D, 15-18E, 15-18F, 15-19, 15-19A, 15-19B, 15-19C, 16-3, 16-4, 16-5, 16-6, 16-7, 16-8, 16-9, 17-2, 17-3, 17-4, 17-5, 17-6, 17-7, 17-8, 17-9, 17-10, 17-11, 17-12, 17-13, 17-13A, 17-14, 17-15, and 17-16 of Orleans Parish; St. Charles Parish; St. James Parish; and St. John the Baptist Parish.

1 **(3) District 3 is composed of Precincts 2-3, 2-4, 3-1, 3-2, 5-2, 5-3, 7-2, 7-3,**
 2 **8-1, and 9-1 of Assumption Parish; Iberia Parish; Precincts 4, 5, 25, 26, and 27**
 3 **of Iberville Parish; Precincts 192, 193A, 193B, 194B, 198, 199, 203, 226, 227,**
 4 **228, 229, 230, 231, 234, 235, 236, 237, 238A, 238B, 246, 247, 248, 3-G, 5-G, 8-G,**
 5 **9-G, 10-G, 11-G, 12-G, 13-G, 1-GI, and 1-L of Jefferson Parish; Lafourche**
 6 **Parish; Plaquemines Parish; St. Bernard Parish; Precincts 7, 7A, 13, 14, 15, 16,**
 7 **17, 29, 30, 31, 39, and 40 of St. Landry Parish; Precincts 1, 2, 3, 4, 5, 6, 7, 8, 9,**
 8 **10, 11, 12, 13, 14, 15, 16, 20, 21, 22, 24, 25, 27, 28, and 29 of St. Martin Parish;**
 9 **St. Mary Parish; Terrebonne Parish; and Precincts 16, 19A-1, 21, 21A, 23, 26A,**
 10 **28, 29, 32B, 34, 34A, 35, 36A-1, 37, 38, 39, 40, 41, 42A, 42B, 44, 45A, 46A, 46B-1,**
 11 **46B-2, 46B-3, 46B-4, 49B-1, 49B-2, 50A, 51, 53, 57A, and 57B of Vermilion**
 12 **Parish.**"

13 AMENDMENT NO. 2

14 On page 3, delete line 29 and delete page 4 and on page 5, delete lines 1 through 22 and
 15 insert the following:

16 **(5) District 5 is composed of Avoyelles Parish; Caldwell Parish;**
 17 **Catahoula Parish; Claiborne Parish; Concordia Parish; East Carroll Parish;**
 18 **Franklin Parish; Grant Parish; Jackson Parish; La Salle Parish; Lincoln**
 19 **Parish; Madison Parish; Morehouse Parish; Ouachita Parish; Rapides Parish;**
 20 **Richland Parish; Tensas Parish; Union Parish; and West Carroll Parish.**

21 **(6) District 6 is composed of Precincts 1, 2, 3, 4, 5, 6, 7, 8, 9, 10, 11, 12,**
 22 **13, 14, 15, 16, 17, 18, 20, 21, 22, 23, 24, 25, 26, 27, 31, 32, 33, 34, 35, 40, 41, 43, 58,**
 23 **61, 62, 63, 64, 66, 71, 72, 73, 76, 77, and 78 of Ascension Parish; Precincts 1-7,**
 24 **1-8, 1-9, 1-12, 1-33, 1-34, 1-35, 1-39, 1-40, 1-41, 1-42, 1-43, 1-44, 1-46, 1-47, 1-48,**
 25 **1-49, 1-52, 1-53, 1-55, 1-56, 1-57, 1-60, 1-64, 1-65, 1-69, 1-72, 1-74, 1-75, 1-76,**
 26 **1-79, 1-80, 1-89, 1-90, 1-98, 1-99, 1-103, 1-105, 2-6, 2-7, 2-8, 2-18, 2-21, 2-26, 2-29,**
 27 **2-33, 2-34, 2-35, 2-36, 3-1, 3-2, 3-3, 3-4, 3-6, 3-7, 3-9, 3-10, 3-11, 3-13, 3-14, 3-15,**
 28 **3-16, 3-17, 3-18, 3-19, 3-21, 3-22, 3-25, 3-26, 3-27, 3-28, 3-29, 3-30, 3-31, 3-32,**
 29 **3-33, 3-34, 3-35, 3-36, 3-37, 3-38, 3-39, 3-40, 3-41, 3-43, 3-45, 3-46, 3-47, 3-48,**
 30 **3-49, 3-51, 3-52, 3-53, 3-56, 3-58, 3-59, 3-60, 3-61, 3-62, 3-63, 3-64, 3-66, 3-67,**
 31 **3-68, 3-70, 3-71, and 3-72 of East Baton Rouge Parish; Livingston Parish; and**
 32 **Precincts 27, 28, 33, 40, 40A, 41, 42, 42A, 43, 44, 45, 45A, 46, 47, 48, 49, 70, 70A,**
 33 **71, 72, 72A, 73, 74, 112, 114, 116, 117, 118, 119, 120, 120A, 120B, 121, 121A, 122,**
 34 **122A, 122B, 123, 124, 124A, 125, 127, 127A, 129, 129A, 133, 133A, 137, 137A,**
 35 **137B, 137C, 137D, 139, 141, 141A, 143, 143A, 145, 147, 149, 149A, and 151 of**
 36 **Tangipahoa Parish.**

37 **(7) District 7 is composed of Acadia Parish; Allen Parish; Beauregard**
 38 **Parish; Calcasieu Parish; Cameron Parish; Jefferson Davis Parish; Precincts**
 39 **1, 2, 3, 6, 8, 12, 26, 27, 28, 29, 30, 31, 32, 33, 34, 35, 36, 37, 38, 39, 40, 41, 42, 43,**
 40 **44, 45, 46, 47, 48, 49, 65, 66, 67, 69, 70, 71, 72, 73, 74, 75, 76, 77, 78, 79, 80, 81, 82,**
 41 **83, 84, 85, 86, 87, 88, 89, 90, 91, 92, 93, 94, 95, 96, 97, 98, 99, 100, 101, 102, 103,**
 42 **104, 105, 106, 107, 108, 109, 110, 111, 114, 115, 116, 117, 118, 119, 120, 121, 122,**
 43 **123, 124, 125, 126, 127, and 128 of Lafayette Parish; Precincts 41, 42, and 43 of**
 44 **St. Landry Parish; and Precincts 1, 2, 5A, 6, 7A-1, 7B, 8B, 9, 10A, 11, 12, 14, 18,**
 45 **19A, 19B, 20A-2, 20B-1, 24, 25, 25A, and 26 of Vermilion Parish.**

46 **(8) District 8 is composed of Precincts 28, 30, 36, 37, 39, 42, 44, 45, 47,**
 47 **48, 50, 51, 52, 53, 54, 55, 57, and 65 of Ascension Parish; Precincts 1-1, 1-2, 1-3,**
 48 **1-4, 1-5, 1-6, 1-10, 1-11, 1-13, 1-14, 1-15, 1-16, 1-17, 1-18, 1-19, 1-20, 1-21, 1-22,**
 49 **1-23, 1-24, 1-25, 1-26, 1-27, 1-28, 1-29, 1-30, 1-31, 1-32, 1-36, 1-37, 1-38, 1-45,**
 50 **1-50, 1-51, 1-54, 1-58, 1-59, 1-61, 1-62, 1-63, 1-66, 1-67, 1-68, 1-70, 1-71, 1-73,**
 51 **1-77, 1-78, 1-81, 1-82, 1-83, 1-84, 1-85, 1-86, 1-87, 1-88, 1-91, 1-92, 1-93, 1-94,**
 52 **1-95, 1-97, 1-100, 1-101, 1-102, 1-104, 1-107, 2-1, 2-2, 2-3, 2-4, 2-5, 2-9, 2-10, 2-11,**
 53 **2-12, 2-13, 2-14, 2-15, 2-16, 2-17, 2-19, 2-20, 2-22, 2-23, 2-24, 2-25, 2-27, 2-28,**
 54 **2-30, 2-31, 2-32, 2-37, 3-5, 3-8, 3-12, 3-20, 3-23, 3-24, 3-44, 3-50, 3-54, 3-55, 3-57,**
 55 **3-65, and 3-69 of East Baton Rouge Parish; East Feliciana Parish; Evangeline**
 56 **Parish; Precincts 1, 3, 6, 7, 9, 10, 11, 12, 13, 13C, 14, 14A, 15, 15B, 16, 17, 18, 19,**

1 20, 21, 22, 23, 24, 28, 29, 31, and 32 of Iberville Parish; Precincts 4, 5, 7, 9, 10,
2 11, 13, 14, 15, 16, 17, 18, 19, 20, 21, 22, 23, 24, 25, 51, 52, 53, 54, 55, 56, 57, 58, 59,
3 60, 61, 62, 63, 64, 68, 112, and 113 of Lafayette Parish; Pointe Coupee Parish;
4 St. Helena Parish; Precincts 1, 2, 3, 4, 5, 6, 8, 9, 10, 11, 12, 18, 19, 20, 21, 22, 23,
5 24, 25, 26, 27, 28, 32, 33, 34, 35, 36, 37, 38, 44, 45, 46, 47, 48, 49, 50, 51, and 52
6 of St. Landry Parish; Precincts 17, 18, 19, 23, and 26 of St. Martin Parish;
7 Precincts 1, 2, 6, 11, 15, 16, 17, 18, 26, 101, 102, 104, 104A, 105, 106, 106A, 107,
8 108, 109, 110, 111A, and 115B of Tangipahoa Parish; Washington Parish; West
9 Baton Rouge Parish; and West Feliciana Parish."

Plan Statistics

Plan: HCASB14-4144-132

<u>Districts:</u>	<u># of Members</u>	<u>Actual Population</u>	<u>Ideal Population</u>	<u>Absolute Deviation</u>	<u>Relative Deviation</u>
District 1	1	582,430	582,219	211	0.036%
District 2	1	567,081	582,219	-15,138	-2.600%
District 3	1	565,283	582,219	-16,936	-2.909%
District 4	1	573,149	582,219	-9,070	-1.558%
District 5	1	599,806	582,219	17,587	3.021%
District 6	1	597,477	582,219	15,258	2.621%
District 7	1	589,172	582,219	6,953	1.194%
District 8	1	583,359	582,219	1,140	0.196%

Grand Total:	8	4,657,757	4,657,752
--------------	---	-----------	-----------

Ideal Population Per Member:	582219		
Number of Districts for Plan Type:	8		
Range of District Populations:	565,283	to	599,806
Absolute Mean Deviation:	4,315		
Absolute Range:	-16,936	to	17,587
Absolute Overall Range:	34,523		
Relative Mean Deviation:	1.77%		
Relative Range:	-2.91%	to	3.02%
Relative Overall Range:	5.93%		

<i>Ideal - Actual:</i>	<i>-5</i>
<i>Remainder:</i>	<i>5</i>
<i>Unassigned Population:</i>	<i>0</i>

District Summary

DB: LA 2020 12 - CENSUS

Plan: HCASB14-4144-132

Plan Type: BESE

Page: 1 of 3

	Total Population	Total White	Total Black	Total Asian	Total Other	Total Hispanic	VAP Total	VAP White	VAP Black	VAP Hispanic Total	Reg Total Dec 2021	Reg White Dec 2021	Reg Black Dec 2021	Reg Other Dec 2021	Reg Dem Total Dec 2021	Reg Rep Total Dec 2021	Reg Other Total Dec 2021
District 1																	
Jefferson	260,747	165,581	37,395	13,449	39,710	49,710	209,367	139,259	27,398	35,667	159,887	123,228	15,973	20,686	46,608	64,620	48,659
Orleans	57,113	45,328	4,810	2,308	4,020	6,697	47,153	37,718	4,065	5,639	39,113	32,920	2,145	4,048	15,733	11,242	12,138
St. Tammany	264,570	196,641	38,643	5,774	17,852	20,844	202,228	154,621	26,761	14,310	178,779	145,724	21,142	11,913	40,588	84,470	53,721
District 1	582,430	407,550	80,848	21,531	61,582	77,251	458,748	331,598	58,224	55,616	377,779	301,872	39,260	36,647	102,929	160,332	114,518
	100.000%	69.974%	13.881%	3.697%	10.573%	13.264%	100.000%	72.283%	12.692%	12.123%	82.350%	79.907%	10.392%	9.701%	27.246%	42.441%	30.313%
District 2																	
Assumption	9,701	4,158	5,201	38	228	309	7,552	3,318	3,977	220	7,034	2,932	4,003	99	4,522	1,291	1,221
Jefferson	115,278	24,183	70,313	5,607	13,778	17,507	86,233	19,912	51,436	11,856	66,350	15,052	43,482	7,816	40,074	7,787	18,489
Orleans	326,884	81,134	214,159	10,548	18,024	24,320	259,043	72,534	162,003	17,517	217,131	59,066	139,380	18,685	149,557	13,920	53,654
St. Charles	52,549	33,550	13,928	837	3,309	4,141	39,541	26,154	9,890	2,737	34,985	24,309	8,797	1,879	12,561	13,121	9,303
St. James	20,192	9,973	9,762	60	315	343	15,505	7,883	7,297	237	14,966	7,254	7,501	211	9,435	3,083	2,448
St. John the Baptist	42,477	13,877	25,196	403	2,536	3,291	32,503	11,622	18,437	2,210	28,913	10,219	17,234	1,460	17,505	4,723	6,685
District 2	567,081	166,875	338,559	17,493	38,190	49,911	440,377	141,423	253,040	34,777	369,379	118,832	220,397	30,150	233,654	43,925	91,800
	100.000%	29.427%	59.702%	3.085%	6.734%	8.801%	100.000%	32.114%	57.460%	7.897%	83.878%	32.171%	59.667%	8.162%	63.256%	11.892%	24.853%
District 3																	
Assumption	11,338	9,564	1,019	58	515	605	9,064	7,827	730	411	7,405	6,768	507	130	3,049	2,624	1,732
Iberia	69,929	39,206	24,556	2,123	3,250	3,897	52,791	31,295	17,069	2,657	44,526	28,287	14,352	1,887	17,218	15,726	11,582
Iberville	4,213	3,921	118	9	98	136	3,439	3,226	72	100	3,023	2,905	52	66	1,107	1,152	764
Jefferson	64,756	31,171	18,509	3,968	9,431	11,840	49,054	24,964	13,341	7,961	36,864	21,336	10,121	5,407	14,643	10,536	11,685
Lafourche	97,557	71,710	15,855	1,025	4,743	5,672	74,619	56,838	11,077	3,743	58,278	48,467	7,164	2,647	18,929	23,241	16,108
Plaquemines	23,515	14,287	5,428	1,317	1,786	2,236	17,334	10,856	3,857	1,377	13,908	9,513	3,134	1,261	5,086	5,062	3,760
St. Bernard	43,764	24,497	12,309	1,381	4,630	6,010	31,775	18,992	7,944	4,028	25,653	18,233	5,497	1,923	10,335	6,620	8,698
St. Landry	16,838	12,917	3,403	87	271	307	12,761	10,013	2,416	201	11,619	9,224	2,121	274	4,606	4,357	2,656
St. Martin	41,923	28,203	11,546	535	1,196	1,389	32,065	22,272	8,217	950	28,615	20,318	7,622	675	11,558	10,245	6,812
St. Mary	49,406	26,949	15,991	835	3,961	4,524	37,521	21,594	11,520	2,954	30,210	18,712	9,891	1,607	11,875	9,939	8,396
Terrebonne	109,580	69,934	23,147	1,743	6,119	7,358	82,505	55,631	15,796	4,701	61,720	45,395	11,566	4,759	18,175	25,124	18,421
Vermilion	32,464	22,671	6,971	1,131	1,308	1,545	24,419	17,864	4,565	1,014	20,473	15,618	3,992	863	7,528	7,405	5,540
District 3	565,283	355,030	138,852	14,212	37,308	45,519	427,347	281,372	96,604	30,097	342,294	244,776	76,019	21,499	124,109	122,031	96,154
	100.000%	62.806%	24.563%	2.514%	6.600%	8.052%	100.000%	65.842%	22.606%	7.043%	80.097%	71.510%	22.209%	6.281%	36.258%	35.651%	28.091%
District 5																	
Avoyelles	39,693	25,625	11,678	434	1,189	1,485	30,578	20,269	8,311	1,257	23,426	16,534	6,294	598	10,883	7,042	5,501
Caldwell	9,645	7,646	1,632	51	166	221	7,478	5,969	1,224	163	6,031	5,124	818	89	1,805	2,800	1,426
Catahoula	8,906	5,776	2,395	46	570	614	6,951	4,557	1,736	558	6,467	4,639	1,770	58	2,693	2,416	1,358
Claiborne	14,170	7,263	6,360	88	274	479	11,507	6,258	4,824	403	8,598	4,632	3,820	146	3,725	2,923	1,950
Concordia	18,687	10,275	7,725	122	332	459	14,217	8,108	5,613	310	11,964	7,222	4,540	202	5,401	3,963	2,600

District Summary

DB: LA 2020 12 - CENSUS

Plan: HCASB14-4144-132

Page: 2 of 3

Plan Type: BESE

	Total Population	Total White	Total Black	Total Asian	Total Other	Total Hispanic	VAP Total	VAP White	VAP Black	VAP Hispanic Total	Reg Total Dec 2021	Reg White Dec 2021	Reg Black Dec 2021	Reg Other Dec 2021	Reg Dem Total Dec 2021	Reg Rep Total Dec 2021	Reg Other Total Dec 2021
District 5																	
East Carroll	7,459	2,054	5,272	29	61	115	5,901	1,773	4,043	80	4,709	1,306	3,359	44	3,096	769	844
Franklin	19,774	12,492	6,802	70	205	276	15,028	9,901	4,779	183	13,159	9,015	4,034	110	5,034	5,423	2,702
Grant	22,169	17,709	3,335	133	348	1,333	17,527	13,964	2,717	1,179	12,688	11,174	1,176	338	3,190	6,019	3,479
Jackson	15,031	9,967	4,166	175	468	468	11,783	7,967	3,125	372	9,449	6,647	2,610	192	3,473	3,985	1,991
La Salle	14,791	11,348	1,422	283	1,366	1,402	11,563	8,636	1,065	1,325	8,792	7,978	637	177	2,113	4,760	1,919
Lincoln	48,396	26,034	19,364	892	1,444	1,754	38,655	21,306	15,119	1,187	25,649	15,672	9,016	961	9,470	9,611	6,568
Madison	10,017	3,475	6,363	20	100	204	7,435	2,906	4,391	149	7,278	2,494	4,674	110	4,150	1,515	1,613
Morehouse	25,629	12,281	12,484	160	334	381	20,062	10,095	9,300	292	16,922	8,505	8,131	286	7,924	5,246	3,752
Ouachita	160,368	88,545	61,217	2,788	5,157	5,658	120,200	69,974	42,290	3,946	99,752	60,515	35,658	3,579	37,056	37,637	25,059
Rapides	130,023	77,510	42,592	2,428	4,391	5,090	98,792	61,373	30,205	3,442	80,176	52,832	23,775	3,569	29,424	29,851	20,901
Richland	20,043	11,785	7,603	83	314	400	15,383	9,338	5,546	293	13,662	8,470	4,961	231	5,218	5,268	3,176
Tensas	4,147	1,744	2,312	23	42	67	3,235	1,446	1,728	46	3,455	1,503	1,917	35	2,091	835	529
Union	21,107	14,460	5,224	62	1,023	1,135	16,632	11,807	3,861	709	15,221	11,066	3,692	463	5,073	6,714	3,434
West Carroll	9,751	7,894	1,425	27	225	325	7,532	6,223	1,010	192	7,038	5,913	1,040	85	1,986	3,370	1,682
District 5	599,806	353,883	209,371	7,914	18,009	21,866	460,459	281,870	150,887	16,086	374,436	241,241	121,922	11,273	143,805	140,147	90,484
	100.000%	59.000%	34.906%	1.319%	3.002%	3.646%	100.000%	61.215%	32.769%	3.493%	81.318%	64.428%	32.562%	3.011%	38.406%	37.429%	24.165%
District 6																	
Ascension	103,922	74,920	17,479	2,147	7,566	8,787	75,322	55,982	11,772	5,599	65,880	52,557	9,581	3,742	17,826	29,112	18,942
East Baton Rouge	242,296	158,063	55,477	11,356	14,166	16,228	192,559	130,534	40,561	11,681	152,652	114,159	28,285	10,208	47,070	64,354	41,228
Livingston	142,282	116,855	12,658	1,697	7,961	8,791	105,141	88,432	8,136	5,390	84,568	76,062	5,425	3,081	17,498	42,502	24,568
Tangipahoa	108,977	69,932	30,241	1,340	5,302	6,393	83,149	56,026	20,874	4,249	61,361	45,242	13,668	2,451	19,559	23,757	18,045
District 6	597,477	419,770	115,855	16,540	34,995	40,199	456,171	330,974	81,343	26,919	364,461	288,020	56,959	19,482	101,953	159,725	102,783
	100.000%	70.257%	19.391%	2.768%	5.857%	6.728%	100.000%	72.555%	17.832%	5.901%	79.896%	79.026%	15.628%	5.345%	27.974%	43.825%	28.201%
District 7																	
Acadia	57,576	44,480	10,864	238	1,421	1,641	42,943	34,071	7,383	1,026	37,678	30,555	6,407	716	13,474	15,248	8,956
Allen	22,750	16,327	4,490	246	740	1,893	17,510	12,751	3,275	1,755	12,201	9,478	2,217	506	4,781	4,617	2,803
Beauregard	36,549	29,529	4,649	402	917	1,271	27,489	22,304	3,495	828	22,294	18,771	2,369	1,154	5,346	10,341	6,607
Calcasieu	216,785	139,772	59,386	4,702	9,389	11,384	163,166	108,789	41,898	7,570	120,511	85,659	29,513	5,339	43,258	43,220	34,033
Cameron	5,617	5,232	125	30	155	197	4,358	4,100	79	130	4,789	4,610	88	91	1,402	2,112	1,275
Jefferson Davis	32,250	25,066	5,837	183	692	734	24,039	19,121	4,006	489	20,013	16,350	3,202	461	6,839	7,644	5,530
Lafayette	188,892	137,649	31,542	6,037	10,888	12,814	144,039	108,453	21,545	8,830	120,727	98,255	15,500	6,972	30,055	56,127	34,545
St. Landry	3,858	3,131	464	18	184	245	2,825	2,328	339	122	2,184	1,860	250	74	653	891	640
Vermilion	24,895	21,806	1,839	316	694	751	18,593	16,499	1,222	482	16,296	14,887	1,002	407	5,197	6,822	4,277
District 7	589,172	422,992	119,196	12,172	25,080	30,930	444,962	328,416	83,242	21,232	356,693	280,425	60,548	15,720	111,005	147,022	98,666
	100.000%	71.794%	20.231%	2.066%	4.257%	5.250%	100.000%	73.808%	18.708%	4.772%	80.163%	78.618%	16.975%	4.407%	31.121%	41.218%	27.661%
District 8																	

District Summary

DB: LA 2020 12 - CENSUS

Plan: HCASB14-4144-132

Plan Type: BESE

Page: 3 of 3

	Total Population	Total White	Total Black	Total Asian	Total Other	Total Hispanic	VAP Total	VAP White	VAP Black	VAP Hispanic Total	Reg Total Dec 2021	Reg White Dec 2021	Reg Black Dec 2021	Reg Other Dec 2021	Reg Dem Total Dec 2021	Reg Rep Total Dec 2021	Reg Other Total Dec 2021
Ascension	22,578	6,221	14,737	153	1,273	1,596	16,635	5,154	10,367	1,062	14,037	4,243	9,233	561	8,933	2,065	3,039
East Baton Rouge	214,485	38,006	157,921	5,069	11,996	14,323	163,053	33,347	116,229	9,858	126,612	24,073	96,390	6,149	84,455	12,581	29,576
East Feliciana	19,539	11,516	7,341	91	329	391	16,183	9,740	5,918	317	13,600	7,959	5,186	455	6,060	4,533	3,007
Evangeline	32,350	21,354	9,235	241	1,240	1,336	24,408	16,460	6,483	1,111	20,553	14,566	5,643	344	9,339	7,047	4,167
Iberville	26,028	10,912	13,612	193	1,104	1,282	20,647	9,236	10,160	1,087	17,439	7,227	9,845	367	11,017	3,209	3,213
Lafayette	52,861	15,714	33,594	417	2,702	3,169	39,836	13,155	24,372	1,999	32,766	10,390	20,981	1,395	18,416	5,427	8,923
Pointe Coupee	20,758	12,395	7,504	107	593	625	16,250	10,108	5,502	429	14,675	9,320	5,121	234	7,546	3,996	3,133
St. Helena	10,920	4,527	6,031	39	189	216	8,463	3,805	4,371	149	8,321	3,628	4,565	128	5,095	1,797	1,429
St. Landry	61,844	27,563	31,969	394	1,503	1,626	46,225	21,868	22,742	1,051	40,679	19,009	20,634	1,036	22,192	9,704	8,783
St. Martin	9,844	5,056	4,375	62	255	290	7,339	4,006	3,076	194	6,505	3,616	2,759	130	2,979	1,914	1,612
Tangipahoa	24,180	11,404	11,638	134	712	849	18,342	9,179	8,343	591	14,895	7,670	6,857	368	7,481	4,057	3,357
Washington	45,463	29,943	13,434	216	1,134	1,410	34,951	23,743	9,732	901	27,587	18,835	8,102	650	11,445	9,545	6,597
West Baton Rouge	27,199	14,307	11,170	287	1,109	1,244	20,526	11,146	8,149	871	17,141	9,937	6,865	339	8,191	4,845	4,105
West Feliciana	15,310	10,883	3,740	89	373	651	12,783	9,283	2,951	572	7,407	5,092	2,180	135	2,874	2,871	1,662
District 8	583,359 100.000%	219,801 37.679%	326,301 55.935%	7,492 1.284%	24,512 4.202%	29,008 4.973%	445,641 100.000%	180,230 40.443%	238,395 53.495%	20,192 4.531%	362,217 81.280%	145,565 40.187%	204,361 56.419%	12,291 3.393%	206,023 56.878%	73,591 20.317%	82,603 22.805%
Grand Total	4,084,608 100.000%	2,345,901 57.433%	1,328,982 32.536%	97,354 2.383%	239,676 5.868%	294,684 7.214%	3,133,705 100.000%	1,875,883 59.862%	961,735 30.690%	204,919 6.539%	2,547,259 81.286%	1,620,731 63.626%	779,466 30.600%	147,062 5.773%	1,023,478 40.180%	846,773 33.243%	677,008 26.578%

Differing Assignments

DB: LA 2020 12 - CENSUS

Plan: HCASB14-4144-132

Page: 1 of 9

	HCASB14-4144-132	Senate Bill 14 Engrossed
Allen		
1-1	7	5
1-2	7	5
1-3	7	5
1-4	7	5
1-5	7	5
1-6	7	5
2-1	7	5
2-2	7	5
2-2-A	7	5
2-3	7	5
2-4-C	7	5
2-4-O	7	5
2-5	7	5
2-6	7	5
3-1	7	5
3-2	7	5
4-2	7	5
4-3	7	5
5-2	7	5
5-3	7	5
5-4-C	7	5
5-4-O	7	5
5-5	7	5
5-7	7	5
5-8A	7	5
5-9	7	5
5-10	7	5
5-12	7	5
5-13	7	5
Ascension		
28	8	6
53	8	3
Assumption		
1-1	2	3
1-2	2	3
2-1	2	3
2-2	2	3
2-5	2	3
4-1	2	3
4-2	2	3
4-3	2	3
5-1	2	3
5-5	2	3
6-1	2	3
6-2	2	3

Differing Assignments

DB: LA 2020 12 - CENSUS

Plan: HCASB14-4144-132

Page: 2 of 9

	HCASB14-4144-132	Senate Bill 14 Engrossed
6-3	2	3
7-1	2	3
Avoyelles		
1-1	5	8
1-2	5	8
1-3	5	8
2-1	5	8
2-2	5	8
2-2A	5	8
2-2B	5	8
2-2C	5	8
2-2D	5	8
2-2F	5	8
2-3A	5	8
2-4	5	8
2-4A	5	8
2-5	5	8
2-5E	5	8
2-7	5	8
2-8	5	8
3-1	5	8
3-1B	5	8
3-3	5	8
4-1	5	8
4-2	5	8
4-2A	5	8
5-1	5	8
5-1A	5	8
6-1A	5	8
6-2	5	8
6-2A	5	8
7-1	5	8
7-3	5	8
7-3B	5	8
8-1	5	8
8-2A	5	8
8-2B	5	8
8-3	5	8
8-3A	5	8
9-1A	5	8
9-2	5	8
9-2A	5	8
9-3	5	8
9-4	5	8
9-4B	5	8

Differing Assignments

DB: LA 2020 12 - CENSUS

Plan: HCASB14-4144-132

Page: 3 of 9

	HCASB14-4144-132	Senate Bill 14 Engrossed
9-5B	5	8
10-2	5	8
10-2A	5	8
10-3A	5	8
10-4	5	8
11-1	5	8
11-2A	5	8
East Baton Rouge		
1-9	6	8
1-55	6	8
1-60	6	8
1-65	6	8
1-90	6	8
1-107	8	6
2-18	6	8
2-21	6	8
2-26	6	8
2-29	6	8
2-34	6	8
2-35	6	8
2-36	6	8
3-5	8	6
3-32	6	8
3-72	6	8
Evangeline		
1020	8	5
1031	8	5
1040	8	5
1041	8	5
1050	8	5
1060	8	5
1130	8	5
1140	8	5
1150	8	5
1161	8	5
2010	8	5
2010A	8	5
2020	8	5
2030	8	5
2040	8	5
3010	8	5
3031	8	5
3040	8	5
3052	8	5
3070	8	5

Differing Assignments

DB: LA 2020 12 - CENSUS

Plan: HCASB14-4144-132

Page: 4 of 9

	HCASB14-4144-132	Senate Bill 14 Engrossed
3071	8	5
4001	8	5
4010	8	5
4011	8	5
4012	8	5
4020	8	5
4021	8	5
4030	8	5
4040	8	5
5004	8	5
5010	8	5
5020	8	5
5030	8	5
5040	8	5
5041	8	5
5050	8	5
Iberville		
13	8	3
14	8	3
15B	8	3
17	8	3
18	8	3
24	8	3
Jefferson		
116	1	2
170	1	2
171	1	3
172	1	3
174	2	3
175	1	3
176	1	3
177	1	3
178	1	3
179A	1	2
182	1	3
183	1	3
184	1	3
185A	1	3
189	1	3
190	1	2
204	1	3
210	2	3
211	2	3
1-G	2	3
4-G	2	3

Differing Assignments

DB: LA 2020 12 - CENSUS

Plan: HCASB14-4144-132

Page: 5 of 9

Plan Type: BESE

	HCASB14-4144-132	Senate Bill 14 Engrossed
7-KB	1	2
14-K	1	2
25-K	1	2
27-K	1	2
29-K	1	2
1-W	1	3
3-W	1	3
4-W	1	3
5-W	1	3
6-W	1	3
7-W	1	3
Lafayette		
9	8	7
10	8	7
13	8	7
25	8	7
113	8	7
Orleans		
13-4	1	2
13-6	1	2
13-7	1	2
13-8	1	2
13-9	1	2
13-10	1	2
14-1	1	2
14-2	1	2
14-3	1	2
14-4	1	2
14-5	1	2
14-6	1	2
14-7	1	2
14-8	1	2
14-9	1	2
14-10	1	2
14-11	1	2
14-12	1	2
14-13A	1	2
14-14	1	2
14-15	1	2
14-16	1	2
14-17	1	2
14-18A	1	2
14-19	1	2
14-20	1	2
14-21	1	2

Differing Assignments

DB: LA 2020 12 - CENSUS

Plan: HCASB14-4144-132

Page: 6 of 9

Plan Type: BESE

	HCASB14-4144-132	Senate Bill 14 Engrossed
16-1	1	2
16-1A	1	2
16-2	1	2
17-1	1	2
Pointe Coupee		
13	8	3
14	8	3
15	8	3
17	8	3
18	8	3
19	8	3
20	8	3
St. Charles		
1-3	2	3
1-5	2	3
2-1	2	3
2-2	2	3
2-3	2	3
2-4	2	3
2-5	2	3
4-1	2	3
4-2	2	3
4-3	2	3
4-4	2	3
7-1	2	3
7-2	2	3
7-3	2	3
7-4	2	3
St. James		
1	2	6
2	2	6
3	2	6
4	2	6
5	2	6
6	2	6
7	2	6
8	2	6
9	2	6
10	2	6
11	2	6
12	2	6
13	2	6
14	2	6
15	2	6
16	2	6
17	2	6

Differing Assignments

DB: LA 2020 12 - CENSUS

Plan: HCASB14-4144-132

Page: 7 of 9

	HCASB14-4144-132	Senate Bill 14 Engrossed
18	2	6
19	2	6
St. Martin		
7	3	8
8	3	8
9	3	8
10	3	8
14	3	8
19	8	3
Tangipahoa		
27	6	8
28	6	1
44	6	1
102	8	1
104	8	1
104A	8	1
106	8	1
106A	8	1
108	8	1
110	8	1
112	6	1
114	6	1
116	6	1
118	6	1
119	6	1
120	6	1
120A	6	1
120B	6	1
122	6	1
122A	6	1
122B	6	1
123	6	1
124	6	1
124A	6	1
145	6	1
147	6	1
151	6	1
Lake Pontchartrain	6	1
Vermilion		
16	3	7
19A-1	3	7
21	3	7
21A	3	7
23	3	7
26A	3	7
28	3	7

Differing Assignments

DB: LA 2020 12 - CENSUS

Plan: HCASB14-4144-132

Page: 8 of 9

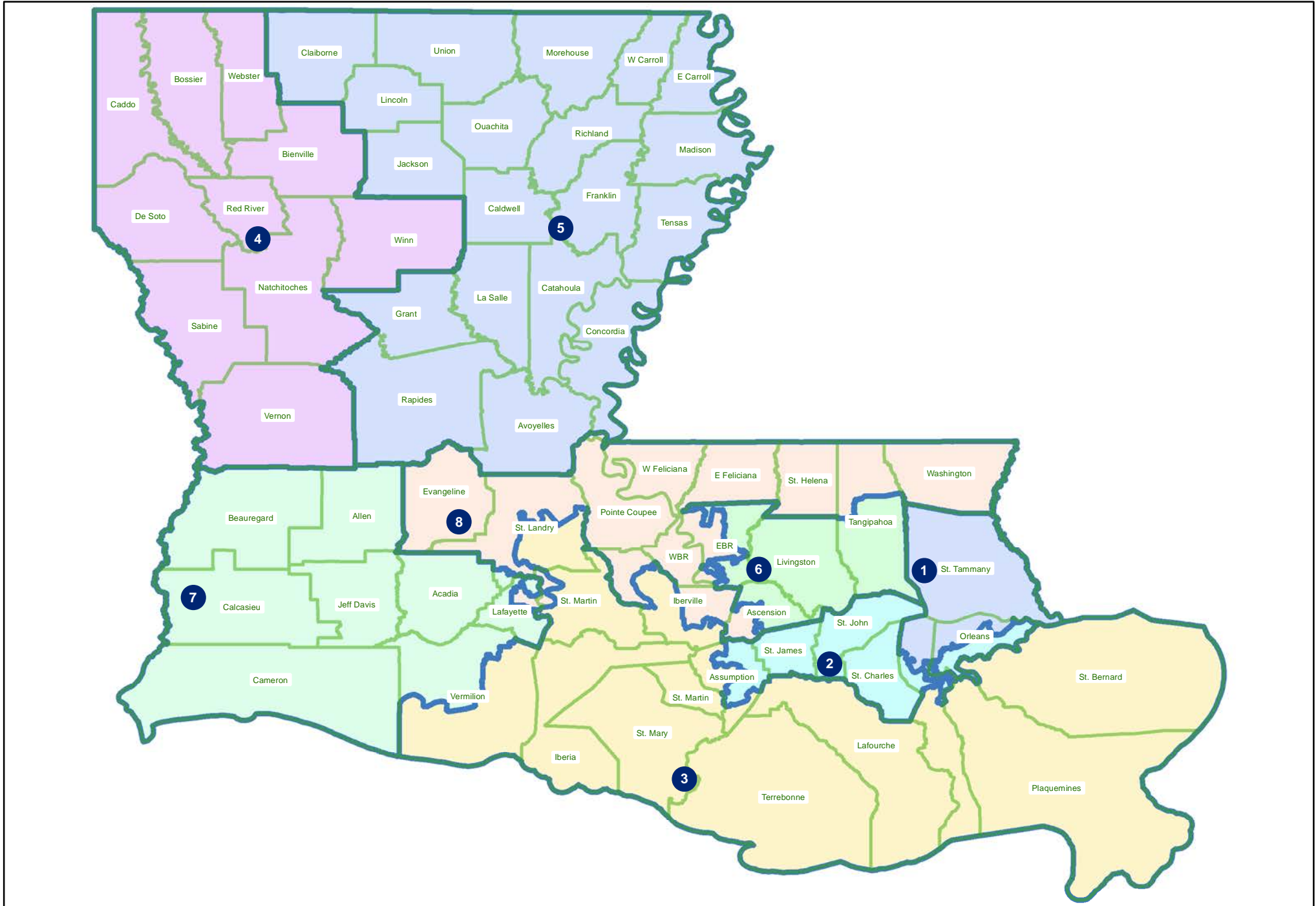
	HCASB14-4144-132	Senate Bill 14 Engrossed
29	3	7
32B	3	7
34	3	7
34A	3	7
35	3	7
36A-1	3	7
37	3	7
38	3	7
39	3	7
40	3	7
41	3	7
42A	3	7
42B	3	7
44	3	7
45A	3	7
46A	3	7
46B-1	3	7
46B-2	3	7
46B-3	3	7
46B-4	3	7
49B-1	3	7
49B-2	3	7
50A	3	7
51	3	7
53	3	7
57A	3	7
57B	3	7
Washington		
1-1	8	1
1-2	8	1
2-1	8	1
3-1	8	1
3-2	8	1
3-3	8	1
3-3A	8	1
3-3B	8	1
3-3C	8	1
4-1	8	1
4-1A	8	1
4-2A	8	1
4-3	8	1
4-3B	8	1
4-4	8	1
4-5	8	1
4-5B	8	1

Differing Assignments

	HCASB14-4144-132	Senate Bill 14 Engrossed
4-6	8	1
4-7	8	1
4-7B	8	1
4-8	8	1
4-9	8	1
4-9A	8	1
4-10	8	1
4-10A	8	1
4-11	8	1
5-1	8	1
5-2	8	1
5-3	8	1
6-1	8	1
6-2	8	1
6-3	8	1
6-4	8	1
7-1	8	1
7-1A	8	1
7-2	8	1
7-3	8	1
8-1	8	1
8-2	8	1
8-3	8	1
9-1	8	1

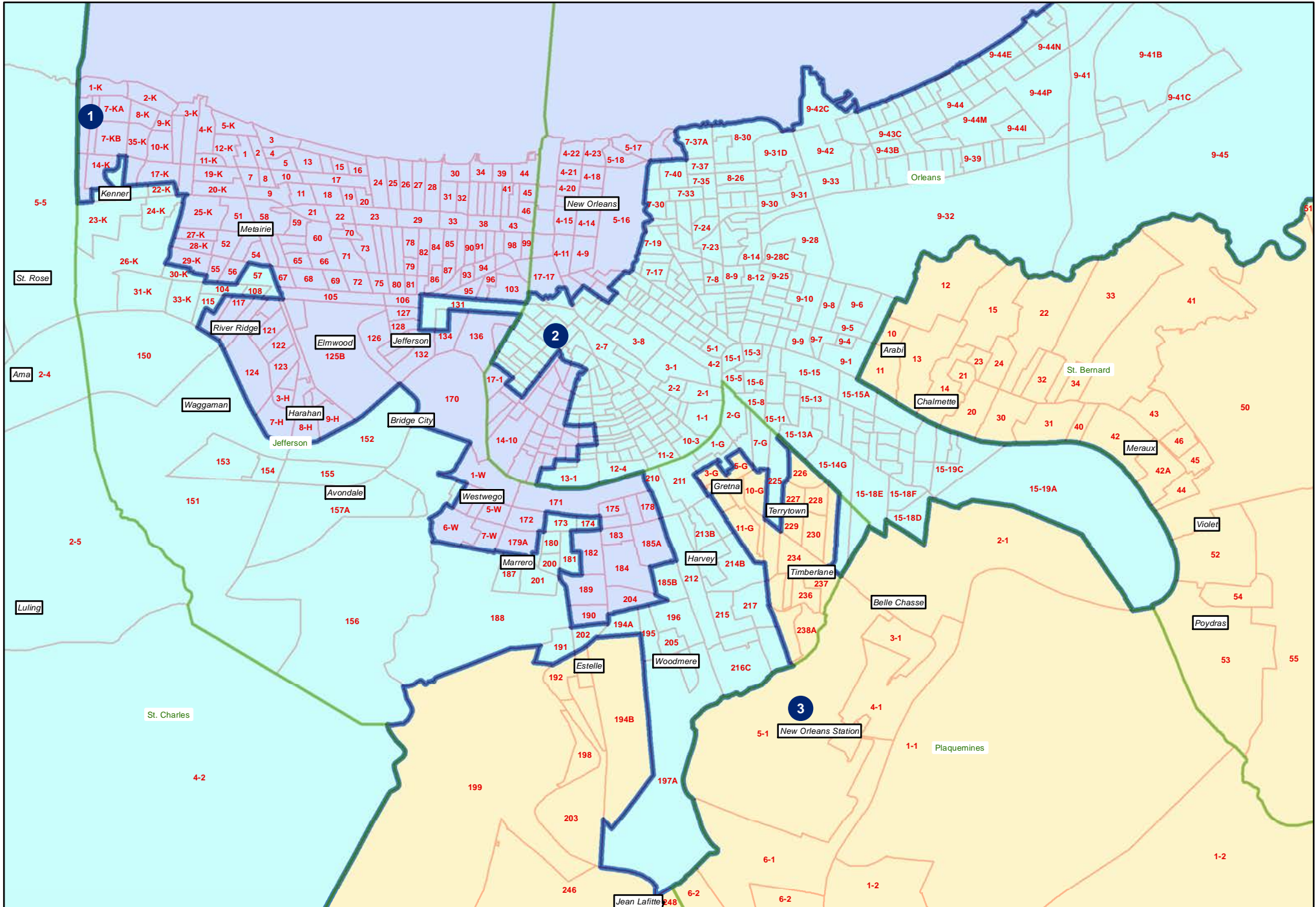
HCASB14-4144-132

Statewide



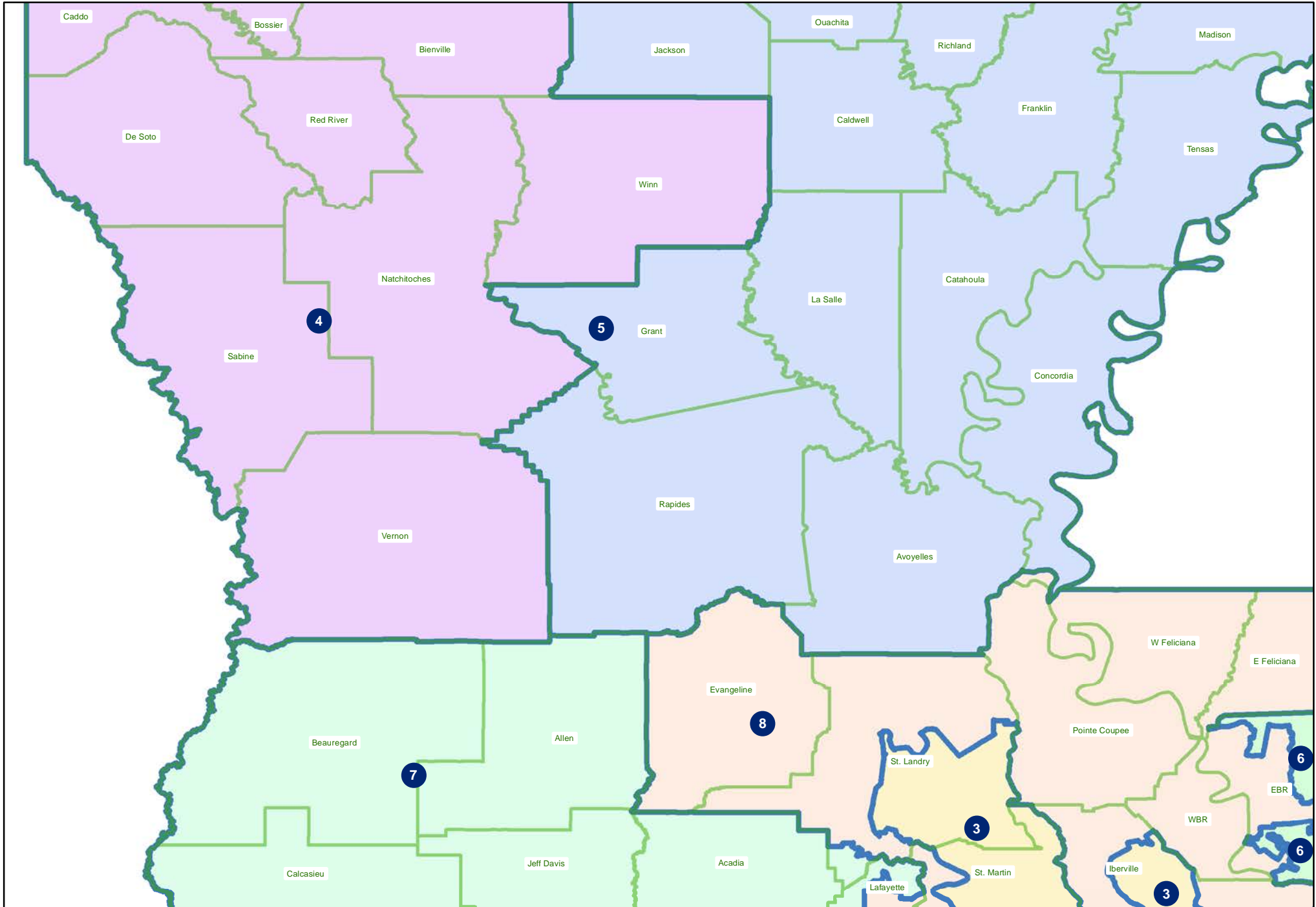
HCASB14-4144-132

Orleans and Jefferson



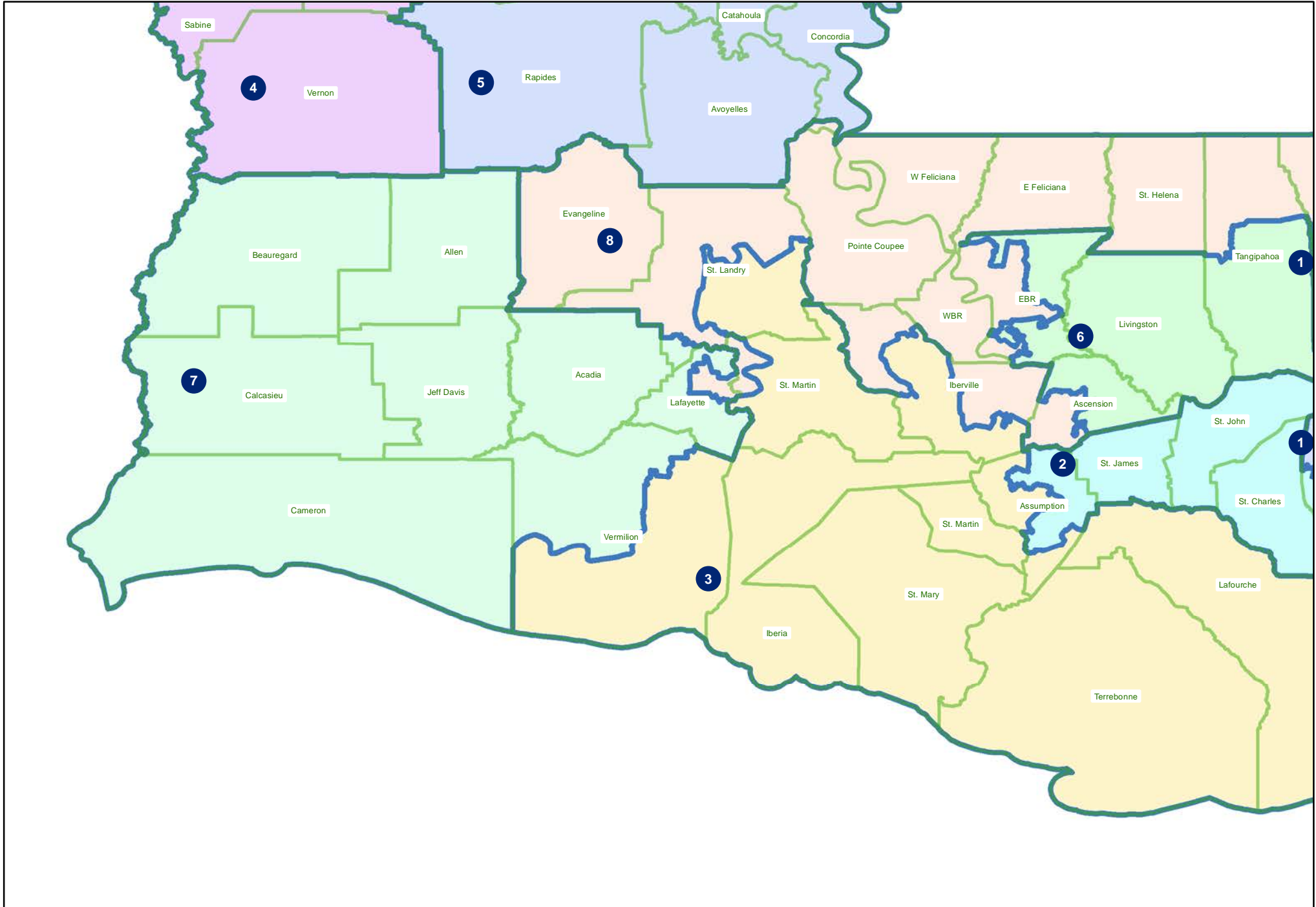
HCASB14-4144-132

Central



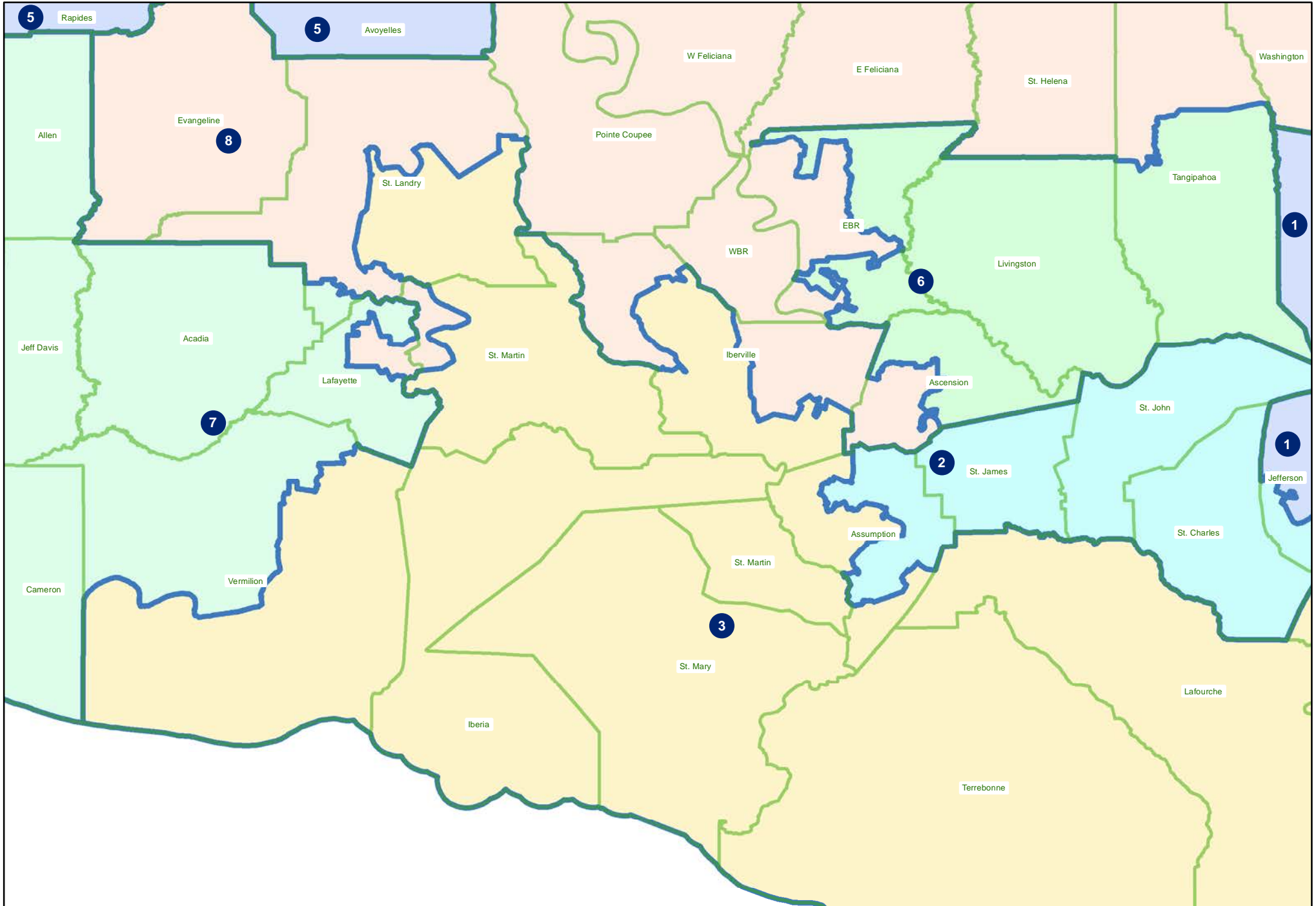
HCASB14-4144-132

Southwest



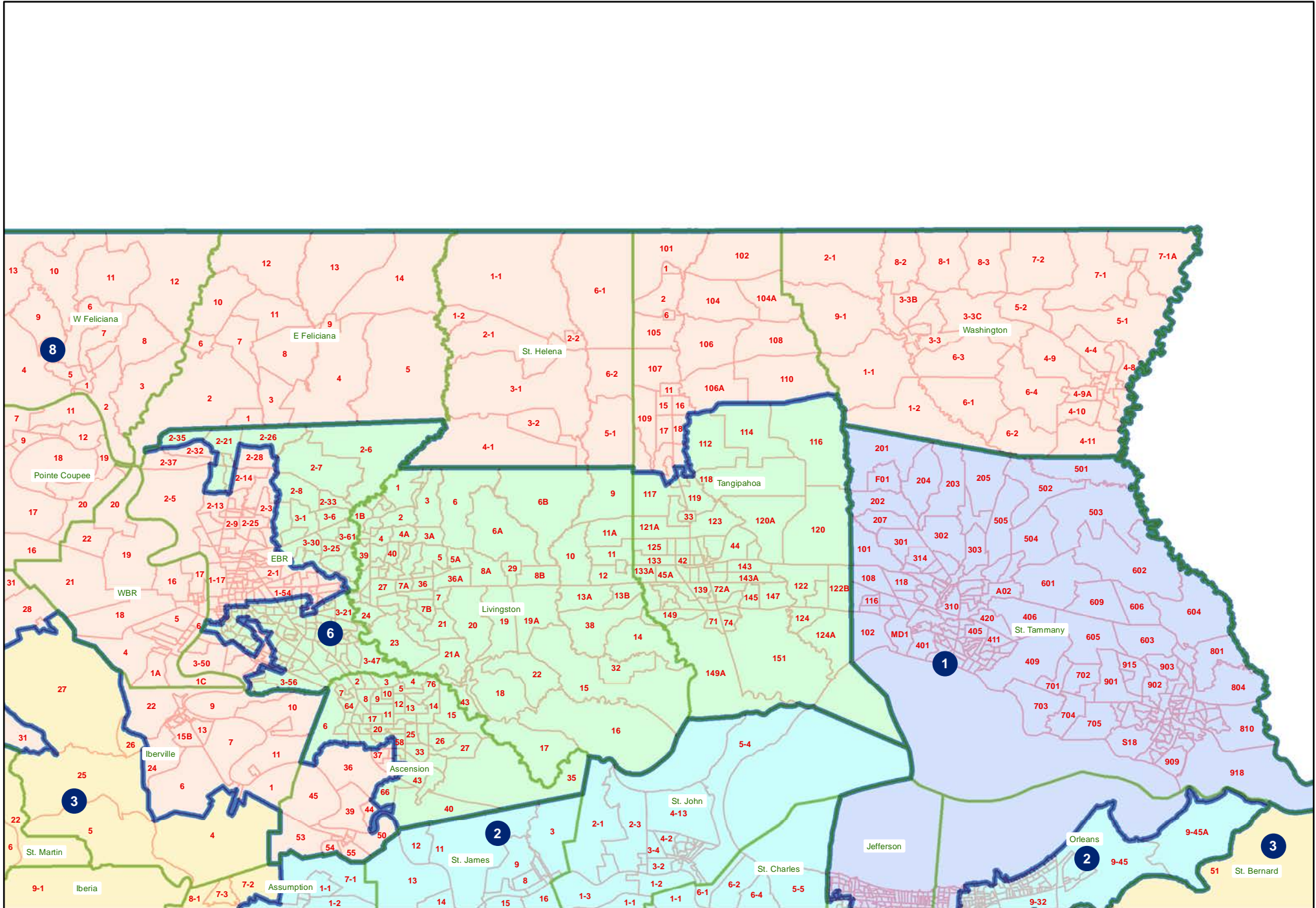
HCASB14-4144-132

Acadiana



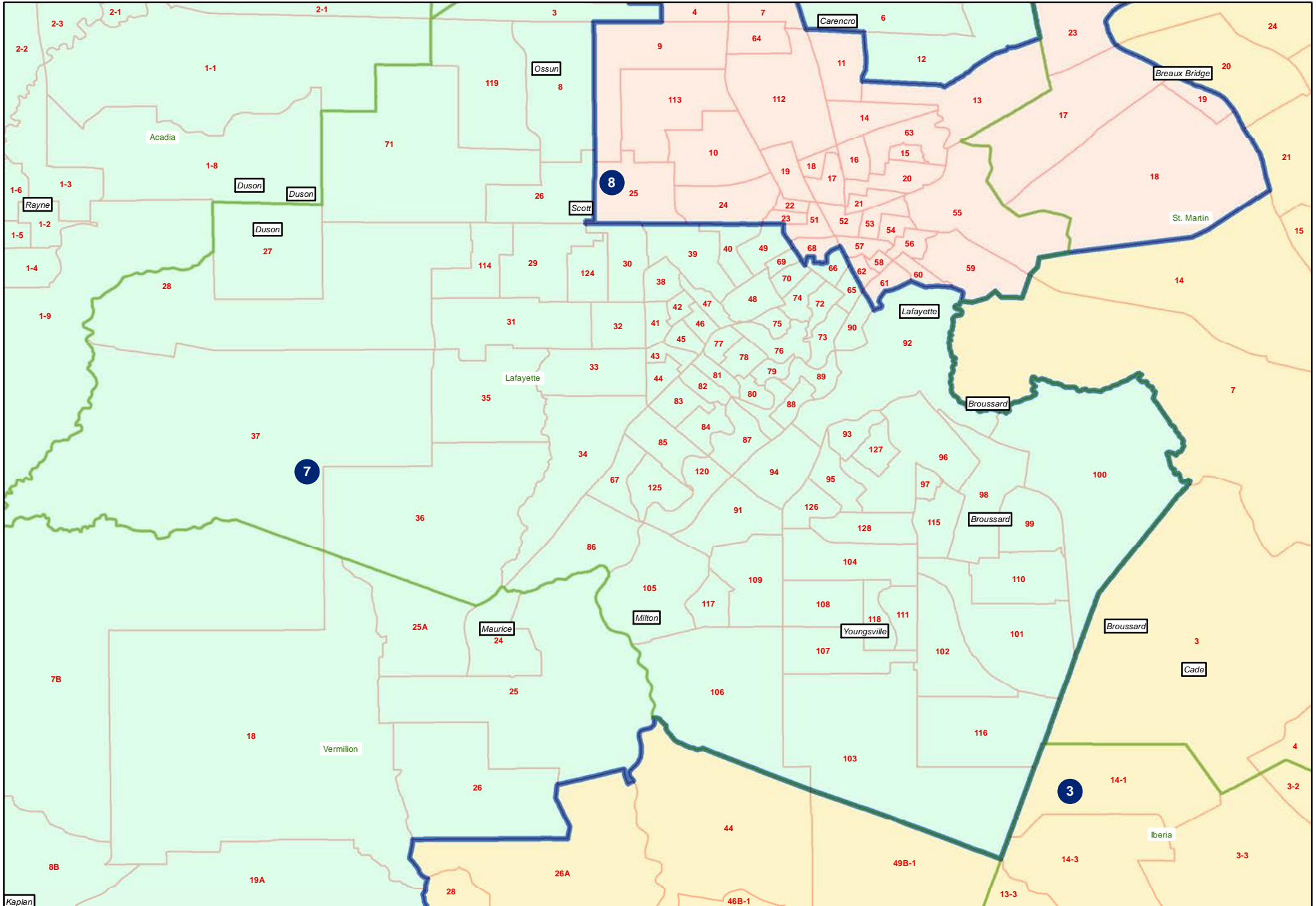
HCASB14-4144-132

Florida Parishes



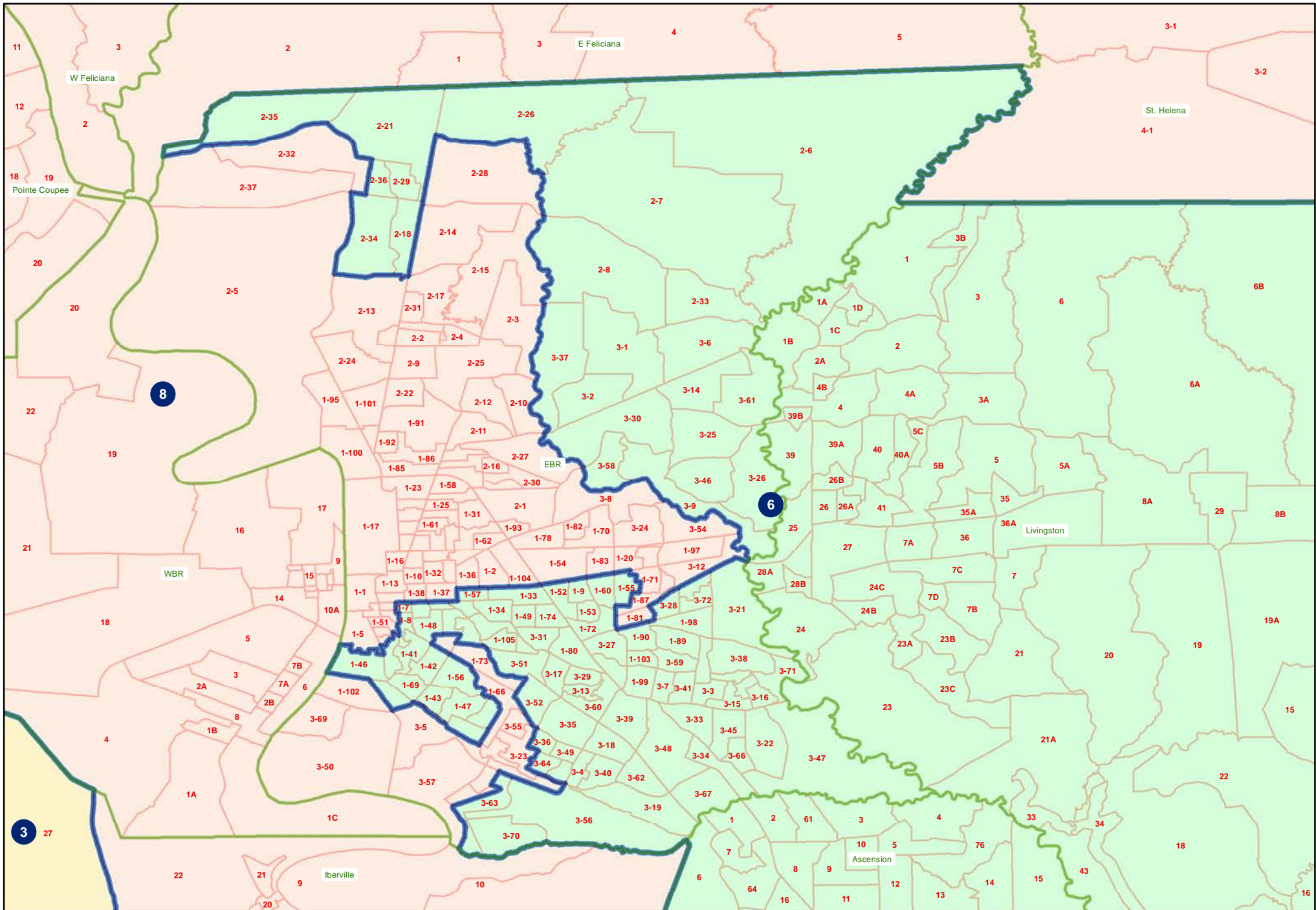
HCASB14-4144-132

Lafayette



HCASB14-4144-132

Baton Rouge



HCASB14-4144-132
Northwest and Northeast

