

2024 First Extraordinary Session

HOUSE BILL NO. 3

BY REPRESENTATIVE WILFORD CARTER

REAPPORTIONMENT/JUDGES: Provides for nine election districts for the election of justices to the supreme court (Item #3)

1 AN ACT

2 To enact R.S. 13:101.2 and 101.3 and to repeal R.S. 13:101, 101.1, and 312.4, relative to the
3 supreme court; to provide relative to redistricting supreme court justice districts into
4 nine districts; to provide for the filling of vacancies; to eliminate statutory provisions
5 for a temporary additional judgeship for the Court of Appeal for the Fourth Circuit
6 and such judge's appointment to the supreme court; and to provide for related
7 matters.

8 Be it enacted by the Legislature of Louisiana:

9 Section 1. R.S. 13:101.2 and 101.3 are hereby enacted to read as follows:

10 §101.2. Supreme court districts; justices

11 The state shall be divided into nine supreme court districts. The supreme
12 court shall be composed of one justice elected from each of the nine districts as set
13 forth below:

- 14 (1) District 1 is composed of Precincts 1, 2, 3, 4, 5, 7, 8, 9, 10, 11, 12, 13, 14,
- 15 15, 16, 17, 18, 19, 20, 21, 22, 23, 24, 25, 26, 27, 28, 29, 30, 31, 32, 33, 34, 35, 36, 37,
- 16 38, 39, 40, 41, 42, 43, 44, 45, 46, 51, 52, 53, 54, 55, 56, 57, 58, 59, 60, 61, 62, 63, 64,
- 17 65, 66, 67, 68, 69, 70, 71, 72, 73, 74, 75, 76, 77, 78, 79, 80, 81, 82, 83, 84, 85, 86, 87,
- 18 88, 89, 90, 91, 92, 93, 94, 95, 96, 97, 98, 99, 100, 101, 102, 103, 105, 106, 118, 119,
- 19 120, 121, 122, 123, 124, 125A, 125B, 126, 127, 128, 1-H, 2-H, 3-H, 4-H, 5-H, 6-H,
- 20 7-H, 8-H, 9-H, 1-K, 2-K, 3-K, 4-K, 5-K, 6-KA, 6-KB, 7-KA, 7-KB, 8-K, 9-K, 10-K,

1 11-K, 12-K, 13-KA, 14-K, 15-K, 16-K, 17-K, 18-K, 19-K, 20-K, 25-K, 27-K, 28-K,
 2 34-K, and 35-K of Jefferson Parish; Precincts 4-9, 4-11, 4-14, 4-15, 4-17, 4-17A,
 3 4-18, 4-20, 4-21, 4-22, 4-23, 5-12, 5-13, 5-15, 5-16, 5-17, 5-18, 7-41, 7-42, 17-17,
 4 17-18, 17-18A, 17-19, and 17-20 of Orleans Parish; and St. Tammany Parish.

5 (2) District 2 is composed of Bienville Parish; Precincts 1-1, 1-2, 1-3, 1-3A,
 6 1-3B, 1-4, 1-5, 2-1, 2-1A, 2-2, 2-3, 2-3A, 2-4, 2-7, 2-9, 2-10, 2-11, 2-12A, 2-12B,
 7 2-13, 2-14, 2-15, 2-16, 2-17A, 2-17B, 2-18B, 2-18C, 2-18D, 2-18F, 2-18G, 2-18H,
 8 2-18I, 2-19, 2-20, 2-21A, 2-21B, 2-21C, 2-21D, 2-21E, 2-22A, 2-22B, 2-22C, 2-23,
 9 3-1, 3-2, 3-3, 3-4, 4-1A, 4-2, 4-2A, 4-3A, 4-3B, 4-3D, 4-4A, 4-4B, 4-5A, 4-6A,
 10 4-6B, 4-7A, 4-7B, 4-8A, 4-8B, 4-8C, 4-8D, 4-8E, 4-8G, 4-9, 4-10, 4-11A, 4-11B,
 11 and 4-11C of Bossier Parish; Precincts 1-1, 1-2, 1-3, 1-4, 1-5, 1-6, 1-7, 1-8, 1-9,
 12 1-10, 1-11, 1-12, 1-13, 1-14, 2-1, 2-2, 2-4, 2-7, 3-1, 3-8, 4-1, 4-2, 4-3, 4-4, 4-5, 4-6,
 13 4-7, 4-8, 4-9, 4-10, 5-10, 6-1, 8-1, 8-2, 8-3, 8-4, 8-5, 8-6, 8-7, 8-8, 8-9, 9-1, 9-2, 9-3,
 14 9-4, 9-5, 9-6, 9-7, 9-8, 9-9, 9-10, 9-11, 9-12, 9-13, 10-2, 10-8, 10-9, 11-4, 11-5, 11-7,
 15 11-8, 12-1, 12-3, and 12-7 of Caddo Parish; Caldwell Parish; Claiborne Parish;
 16 Precincts 21, 22, and 22A of DeSoto Parish; Precincts 3, 4, 5, 5A, 5B, 15, and 17 of
 17 East Carroll Parish; Franklin Parish; Jackson Parish; Lincoln Parish; Morehouse
 18 Parish; Precincts 1, 1A, 2, 4, 6, 7, 25, 26, 32, 33, 36, 37, 38, 39, 40, 41, 42, 43, 44,
 19 44A, 45, 46, 47, 48, 49, 50, 51, 51A, 52, 52A, 53, 54, 55, 56, 56A, 57, 58, 61, 64, 71,
 20 75, 76, 77, and 78 of Ouachita Parish; Union Parish; Webster Parish; and West
 21 Carroll Parish.

22 (3) District 3 is composed of Acadia Parish; Calcasieu Parish; Cameron
 23 Parish; Jefferson Davis Parish; and Precincts 1, 2, 3, 4, 5, 6, 7, 8, 9, 10, 11, 12, 13,
 24 14, 15, 16, 17, 18, 19, 20, 21, 22, 23, 24, 25, 26, 27, 28, 29, 30, 31, 32, 33, 34, 35, 36,
 25 37, 38, 39, 40, 41, 42, 43, 44, 45, 46, 47, 48, 49, 50, 51, 52, 53, 54, 55, 56, 57, 58, 59,
 26 60, 61, 63, 64, 65, 66, 67, 68, 69, 70, 71, 72, 73, 74, 75, 76, 77, 78, 79, 80, 81, 82, 83,
 27 84, 85, 86, 87, 88, 89, 90, 91, 92, 93, 94, 95, 96, 97, 98, 104, 105, 106, 107, 108, 109,
 28 111, 112, 113, 114, 115, 117, 118, 119, 120, 121, 122, 123, 124, 125, 126, 127, 128,
 29 129, 130, 131, and 133 of Lafayette Parish.

1 (4) District 4 is composed of Precincts 1-2, 2-1, 2-1A, 2-2, 2-2A, 2-2B, 2-2C,
2 2-2D, 2-2F, 2-3A, 2-4, 2-4A, 2-7, 2-8, 3-1, 3-1B, 3-3, and 5-1A of Avoyelles Parish;
3 Precincts 2-5A, 2-6 and 2-8 of Bossier Parish; Precincts 2-3, 2-5, 2-6, 2-8, 2-9, 2-10,
4 2-11, 2-12, 3-2, 3-3, 3-4, 3-5, 3-6, 3-7, 3-9, 5-1, 5-2, 5-3, 5-4, 5-5, 5-6, 5-7, 5-8, 5-9,
5 5-11, 6-2, 6-3, 6-4, 6-5, 6-6, 6-7, 6-8, 6-9, 6-10, 7-1, 7-2, 7-3, 7-4, 7-5, 7-6, 7-7, 7-8,
6 7-9, 7-10, 10-1, 10-3, 10-4, 10-5, 10-6, 10-7, 11-1, 11-2, 11-3, 11-6, 11-9, 11-10,
7 12-2, 12-4, 12-5, 12-6, 12-8, 12-9, 12-10, and 12-11 of Caddo Parish; Catahoula
8 Parish; Precincts 1-1, 1-2, 1-3, 1-3A, 1-4, 2-1, 3-1, 3-2, 3-3, 3-4, 4-1, 4-2, 4-3, 4-4,
9 5-1, 5-4, and 5-6 of Concordia Parish; Precincts 1, 4, 5, 5A, 6, 6A, 6B, 9, 10, 11,
10 11B, 11C, 16, 16A, 16B, 16C, 23, 26, 26A, 28, 30, 30A, 31, 31A, 32, 33, 33A, 34,
11 34A, 34B, 35, 35A, 35B, 37, 37C, 38, 38A, 42, 44, 46, 46A, 46B, 48, 49, 49A, 51,
12 53, 55, 56, 59, 60, 60A, 63, and 63A of De Soto Parish; Precincts 1, 6, 7, 9, 10, 13,
13 14, 16, 18, and 19 of East Carroll Parish; Grant Parish; La Salle Parish; Madison
14 Parish; Natchitoches Parish; Precincts 3, 5, 8, 9, 9A, 10, 11, 12, 13, 14, 15, 16, 17,
15 18, 19, 20, 21, 22, 23, 24, 27, 28, 30, 31, 34, 35, 59, 60, 62, 63, 65, 65A, 66, 67, 68,
16 69, 70, 72, 73, 74, and 79 of Ouachita Parish; Precincts C1, C2, C3, C4, C5, C6, C7,
17 C8, C9, C10, C11-A, C11-B, C13, C14, C15, C17, C18, C19, C20, C21, C24, C25,
18 C26, C27, C28, C38-A, C38-B, C39, C40, N1, N2, N3, N4, N5, N6, N8, N20, N21,
19 S1, S2, S4, S5, S6A, S6B, S8, S9, and S15 of Rapides Parish; Red River Parish;
20 Richland Parish; Precincts 9-1, 9-2, and 9-3 of Sabine Parish; Tensas Parish; and
21 Winn Parish.

22 (5) District 5 is composed of Allen Parish; Precincts 1-1, 1-3, 1-3A, 2-5,
23 2-5E, 4-1, 4-2, 4-2A, 4-2B, 5-1, 5-1B, 6-1A, 6-1B, 6-2, 6-2A, 7-1, 7-3, 7-3B, 8-1,
24 8-2A, 8-2B, 8-3, 8-3A, 9-1A, 9-2, 9-2A, 9-3, 9-4, 9-4B, 9-5B, 10-2, 10-2A, 10-2B,
25 10-3A, 10-3B, 10-4, 11-1, and 11-2A of Avoyelles Parish; Beauregard Parish;
26 Precincts 5-5 of Concordia Parish; Precincts 2-6, 2-7, 2-8, 2-33, 3-1, 3-2, 3-6, 3-9,
27 3-14, 3-25, 3-26, 3-30, 3-37, 3-46, 3-58, and 3-61 of East Baton Rouge Parish; East
28 Feliciana Parish; Evangeline Parish; Pointe Coupee Parish; Precincts C22, C23, C30,
29 C31, C32, C33, C34, C35, C36, C37-A, C37-B, C41, C42, N7, N9, N10, N11, N12,

1 N13-A, N13-B, N14-A, N14-B, N15, N16, N17, N18-A, N18-B, N19, N22, N23,
 2 N24, N25, N26, N27, N28, N29, S7, S10, S11, S13, S14, S16, S17, S18, S19, S20,
 3 S21, S22, S23, S24, S25, S26, S27, S28, and S29 of Rapides Parish; Precincts 1-1,
 4 1-2, 1-3, 1-4, 1-5, 2-1, 2-2, 2-6, 3-2, 3-5, 3-6, 4-1, 5-1, 5-2, 5-3, 5-4, 5-8, 6-2, 6-3,
 5 7-1, 7-2, 7-3, 7-4, 7-5, 8-1, 8-2, 8-3, 9-4, and 9-5 of Sabine Parish; St. Helena Parish;
 6 St. Landry Parish; Precincts 2, 6, 11, 15, 16, 17, 28, 101, 102, 104, 105, 106, 106A,
 7 107, 108, 109, 110, 111A, 112, 114, 115B, 116, 117, 118, 118A, and 119 of
 8 Tangipahoa Parish; Vernon Parish; Washington Parish; and West Feliciana Parish.

9 (6) District 6 is composed of Precincts 2-1, 2-2, 2-3, 2-4, 2-5, 3-1, 3-2, 4-4,
 10 7-3, 8-1, and 9-1 of Assumption Parish; Iberia Parish; Precincts 5, 25, 26, and 27 of
 11 Iberville Parish; Precincts 198, 199, 246, 247, 248, 1-GI, and 1-L of Jefferson Parish;
 12 Precincts 99, 100, 101, 102, 103, 110, 116, 134, 135, and 136 of Lafayette Parish;
 13 Lafourche Parish; Plaquemines Parish; St. Bernard Parish; Precincts 2-5, 4-1, 4-2,
 14 and 4-3 of St. Charles Parish; Precincts 17, 18, and 19 of St. James Parish; Precinct
 15 1-1 of St. John the Baptist Parish; St. Martin Parish; St. Mary Parish; Terrebonne
 16 Parish; and Vermilion Parish.

17 (7) District 7 is composed of Precincts 129, 130, 131, 132, 133, 134, 136,
 18 138, 170, 171, 172, 173, 174, 175, 176, 177, 178, 179A, 179B, 180, 181, 182, 183,
 19 184, 185A, 185B, 189, 190, 191, 192, 193A, 193B, 194A, 194B, 195, 196, 197A,
 20 197B, 200, 202, 203, 204, 205, 210, 211, 212, 213A, 213B, 213C, 214A, 214B, 215,
 21 216A, 216B, 216C, 217, 225, 226, 227, 228, 229, 230, 231, 232A, 232B, 234, 235,
 22 236, 237, 238A, 238B, 1-G, 2-G, 3-G, 4-G, 5-G, 6-G, 7-G, 8-G, 9-G, 10-G, 11-G,
 23 12-G, 13-G, 1-W, 2-W, 3-W, 4-W, 5-W, 6-W, and 7-W of Jefferson Parish; and
 24 Precincts 1-1, 1-2, 1-5, 1-6, 2-1, 2-2, 2-4, 2-6, 2-7, 3-1, 3-8, 3-9, 3-12, 3-14, 3-15,
 25 3-18, 3-19, 3-20, 4-2, 4-3, 4-6, 4-7, 4-8, 5-1, 5-2, 5-3, 5-5, 5-7, 5-8, 5-9, 5-10, 5-11,
 26 6-1, 6-2, 6-4, 6-6, 6-7, 6-8, 6-9, 7-1, 7-2, 7-4, 7-5, 7-6, 7-7, 7-8, 7-9A, 7-10, 7-11,
 27 7-12, 7-13, 7-14, 7-15, 7-16, 7-17, 7-18, 7-19, 7-20, 7-21, 7-23, 7-24, 7-25, 7-25A,
 28 7-26, 7-27, 7-27B, 7-28, 7-28A, 7-29, 7-30, 7-32, 7-33, 7-35, 7-37, 7-37A, 7-40, 8-1,
 29 8-2, 8-4, 8-6, 8-7, 8-8, 8-9, 8-12, 8-13, 8-14, 8-15, 8-19, 8-20, 8-21, 8-22, 8-23, 8-24,

1 8-25, 8-26, 8-27, 8-28, 8-30, 9-1, 9-3, 9-4, 9-5, 9-6, 9-7, 9-8, 9-9, 9-10, 9-11, 9-12,
2 9-13, 9-14, 9-15, 9-16, 9-17, 9-19, 9-21, 9-23, 9-25, 9-26, 9-28, 9-28C, 9-29, 9-30,
3 9-30A, 9-31, 9-31A, 9-31B, 9-31D, 9-32, 9-33, 9-34A, 9-35, 9-35A, 9-36, 9-36B,
4 9-37, 9-38, 9-38A, 9-39, 9-39B, 9-40, 9-40A, 9-40C, 9-41, 9-41A, 9-41B, 9-41C,
5 9-41D, 9-42, 9-42C, 9-43A, 9-43B, 9-43C, 9-43E, 9-43F, 9-43G, 9-43H, 9-43I,
6 9-43J, 9-43K, 9-43L, 9-43M, 9-43N, 9-44, 9-44A, 9-44B, 9-44D, 9-44E, 9-44F,
7 9-44G, 9-44I, 9-44J, 9-44L, 9-44M, 9-44N, 9-44O, 9-44P, 9-44Q, 9-45, 9-45A, 10-3,
8 10-6, 10-7, 10-8, 10-9, 10-11, 10-12, 10-13, 10-14, 11-2, 11-3, 11-4, 11-5, 11-8,
9 11-9, 11-10, 11-11, 11-12, 11-13, 11-14, 11-17, 12-1, 12-2, 12-3, 12-4, 12-5, 12-6,
10 12-7, 12-9, 12-10, 12-11, 12-12, 12-13, 12-14, 12-16, 12-17, 12-19, 13-1, 13-2, 13-3,
11 13-4, 13-5, 13-6, 13-7, 13-8, 13-9, 13-10, 13-11, 13-12, 13-13, 13-14, 13-15, 13-16,
12 14-1, 14-2, 14-3, 14-4, 14-5, 14-6, 14-7, 14-8, 14-9, 14-10, 14-11, 14-12, 14-13A,
13 14-14, 14-15, 14-16, 14-17, 14-18A, 14-19, 14-20, 14-21, 14-23, 14-24A, 14-25,
14 14-26, 15-1, 15-2, 15-3, 15-5, 15-6, 15-8, 15-9, 15-10, 15-11, 15-12, 15-12A, 15-13,
15 15-13A, 15-13B, 15-14, 15-14A, 15-14B, 15-14C, 15-14D, 15-14E, 15-14F, 15-14G,
16 15-15, 15-15A, 15-15B, 15-16, 15-17, 15-17A, 15-17B, 15-18, 15-18A, 15-18B,
17 15-18C, 15-18D, 15-18E, 15-18F, 15-19, 15-19A, 15-19B, 15-19C, 16-1, 16-1A,
18 16-2, 16-3, 16-4, 16-5, 16-6, 16-7, 16-8, 16-9, 17-1, 17-2, 17-3, 17-4, 17-5, 17-6,
19 17-7, 17-8, 17-9, 17-10, 17-11, 17-12, 17-13, 17-13A, 17-14, 17-15, and 17-16 of
20 Orleans Parish.

21 (8) District 8 is composed of Precincts 1-1, 1-2, 1-3, 4-1, 4-2, 4-3, 5-1, 5-2,
22 5-3, 5-5, 6-1, 6-2, 6-3, 7-1, and 7-2 of Assumption Parish; Precincts 1-1, 1-2, 1-3,
23 1-4, 1-5, 1-6, 1-7, 1-8, 1-10, 1-11, 1-12, 1-13, 1-14, 1-15, 1-16, 1-17, 1-18, 1-19,
24 1-20, 1-21, 1-22, 1-23, 1-24, 1-25, 1-26, 1-27, 1-28, 1-29, 1-30, 1-31, 1-32, 1-36,
25 1-37, 1-38, 1-39, 1-40, 1-41, 1-42, 1-43, 1-44, 1-45, 1-46, 1-47, 1-48, 1-50, 1-51,
26 1-54, 1-56, 1-57, 1-58, 1-59, 1-61, 1-62, 1-63, 1-64, 1-65, 1-66, 1-67, 1-68, 1-69,
27 1-70, 1-73, 1-75, 1-76, 1-77, 1-78, 1-82, 1-83, 1-84, 1-85, 1-86, 1-88, 1-91, 1-92,
28 1-93, 1-94, 1-95, 1-96, 1-97, 1-100, 1-101, 1-102, 1-104, 1-107, 2-1, 2-2, 2-3, 2-4,
29 2-5, 2-9, 2-10, 2-11, 2-12, 2-13, 2-14, 2-15, 2-16, 2-17, 2-18, 2-19, 2-20, 2-21, 2-22,

1 2-23, 2-24, 2-25, 2-26, 2-27, 2-28, 2-29, 2-30, 2-31, 2-32, 2-34, 2-35, 2-36, 2-37,
 2 2-38, 3-5, 3-8, 3-20, 3-23, 3-24, 3-42, 3-44, 3-50, 3-54, 3-55, 3-56, 3-57, 3-63, 3-65,
 3 3-69, 3-70, 3-75, and 3-76 of East Baton Rouge Parish; Precincts 1, 3, 4, 6, 7, 9, 10,
 4 10B, 11, 12, 13, 14, 14A, 15, 15A, 15B, 16, 17, 18, 19, 20, 21, 22, 22B, 24, 28, 29,
 5 31, and 32 of Iberville Parish; Precincts 104, 108, 115, 116, 117, 150, 151, 152, 153,
 6 154, 155, 156, 157A, 157B, 187, 188, 201, 13-KB, 21-K, 22-K, 23-K, 24-K, 26-K,
 7 29-K, 30-K, 31-K, and 33-K of Jefferson Parish; Precincts 1-1, 1-2, 1-3, 1-4, 1-5,
 8 1-6, 2-1, 2-3, 2-4, 2-6, 3-1, 3-2, 3-3, 4-4, 4-5, 5-1, 5-3, 5-4, 5-5, 6-1, 6-2, 6-3, 6-4,
 9 6-6, 6-8, 7-1, 7-2, 7-3, 7-4, 7-5, and 7-6 of St. Charles Parish; Precincts 1, 2, 4, 5, 6,
 10 7, 8, 9, 10, 11, 12, 13, 14, 15, 16, 22, and 23 of St. James Parish; Precincts 1-2, 1-3,
 11 1-4, 1-5, 1-6, 1-7, 2-1, 2-2, 2-3, 2-4, 2-5, 3-1, 3-2, 3-3, 3-4, 3-7, 4-1, 4-2, 4-3, 4-4,
 12 4-5, 5-1, 5-2, 5-3, 5-4, 5-5, 6-1, 6-2, 6-3, 6-4, 6-5, 7-1, 7-2, 7-3, and 7-4 of St. John
 13 the Baptist Parish; and West Baton Rouge Parish.

14 (9) District 9 is composed of Ascension Parish; Precincts 1-9, 1-33, 1-34,
 15 1-35, 1-49, 1-52, 1-53, 1-55, 1-60, 1-71, 1-72, 1-74, 1-79, 1-80, 1-81, 1-87, 1-89,
 16 1-90, 1-98, 1-99, 1-103, 1-105, 3-3, 3-4, 3-7, 3-10, 3-11, 3-12, 3-13, 3-15, 3-16, 3-17,
 17 3-18, 3-19, 3-21, 3-22, 3-27, 3-28, 3-29, 3-31, 3-32, 3-33, 3-34, 3-35, 3-36, 3-38,
 18 3-39, 3-40, 3-41, 3-43, 3-45, 3-47, 3-48, 3-49, 3-51, 3-52, 3-53, 3-59, 3-60, 3-62,
 19 3-64, 3-66, 3-67, 3-68, 3-71, 3-72, 3-73, and 3-74 of East Baton Rouge Parish;
 20 Livingston Parish; and Precincts 33, 40A, 41, 42, 43, 44, 45A, 45B, 46, 47, 49, 70,
 21 70A, 71, 72, 72A, 73, 74, 120, 120A, 120B, 121, 121A, 122A, 122B, 122C, 123,
 22 124, 125, 127, 129A, 133, 133A, 137, 137A, 137B, 137C, 137D, 139, 141, 141A,
 23 143, 143A, 145, 147, 149, 149A, and 151 of Tangipahoa Parish.

24 §101.3. Assignment of districts; vacancies, elections; redistricting

25 A. Each justice of the supreme court in office on the effective date of this
 26 Section shall be assigned to the district composed as provided by R.S. 13:101.2
 27 having the same designation as the district from which the justice was elected and
 28 may complete the term for which he was elected.

1 B. The successor to the office of justice of the supreme court shall be elected
2 from the district assigned to that office as provided by Subsection A of this Section.

3 The election shall be from the district composed as provided by R.S. 13:101.2.

4 Section 2. R.S. 13:101, 101.1, and 312.4 are hereby repealed.

5 Section 3.(A) The precincts referenced in this Act are those contained in the file
6 named "2024 Precinct Shapefiles (01-10-2024)" available on the Legislature of Louisiana's
7 website on the effective date of this Section. The 2024 Precinct Shapefiles are based upon
8 those Voting Districts (VTDs) contained in the 2020 Census Redistricting TIGER/Line
9 Shapefiles for the State of Louisiana as those files have been modified and validated through
10 the data verification program of the Louisiana House of Representatives and the Louisiana
11 Senate to represent precinct changes submitted through January 10, 2024, to the Legislature
12 of Louisiana by parish governing authorities pursuant to the provisions of R.S. 18:532 and
13 532.1.

14 (B) When a precinct referenced in this Act has been subdivided by action of the
15 parish governing authority on a nongeographic basis or subdivided by action of the parish
16 governing authority on a geographic basis in accordance with the provisions of R.S.
17 18:532.1, the enumeration in this Act of the general precinct designation shall include all
18 nongeographic and all geographic subdivisions thereof, however such subdivisions may be
19 designated.

20 Section 4.(A) The initial terms of office of supreme court justices to be elected from
21 Districts 8 and 9 as provided for in Section 1 of this Act shall begin on January 1, 2025.

22 (B) The initial term of office of the justice elected from District 8 shall end on
23 January 1, 2035, and the initial term of office of the justice elected from District 9 shall end
24 on January 1, 2027.

25 Section 5. This Act shall take effect and become operative if and when the proposed
26 amendment of Article V of the Constitution of Louisiana contained in the Act which
27 originated as House Bill No. ___ of this 2024 First Extraordinary Session of the Legislature
28 is adopted at a statewide election and becomes effective.

DIGEST

The digest printed below was prepared by House Legislative Services. It constitutes no part of the legislative instrument. The keyword, one-liner, abstract, and digest do not constitute part of the law or proof or indicia of legislative intent. [R.S. 1:13(B) and 24:177(E)]

HB 3 Original

2024 First Extraordinary Session

Wilford Carter

Abstract: Provides for the redistricting of the state's supreme court and provides for the composition of nine supreme court districts. Effective if and when the proposed amendment of Article V of the Constitution of Louisiana contained in the Act which originated as House Bill No. ___ of this 2024 1st E.S. is adopted at a statewide election and becomes effective.

Statistical summaries of proposed law including maps illustrating proposed district boundaries accompany this digest. (*Attached to the bill version on the internet.*)

Present constitution (Const. Art. V, §3) provides the supreme court must be composed of a chief justice and six associate justices.

Proposed constitution (House Bill No. __) provides the supreme court must be composed of a chief justice and eight associate justices.

Present constitution (Const. Art. V, §4) provides the state must be divided into at least six supreme court districts, and at least one judge shall be elected from each. Further provides the districts and the number of judges assigned to each on the effective date of this constitution are retained, subject to change by law enacted by two-thirds of the elected members of each house of the legislature.

Proposed constitution (House Bill No. __) retains present constitution.

Proposed law redraws district boundaries for nine supreme court districts.

Proposed law provides the proposed districts are effective for all purposes if and when the proposed constitution is adopted at a statewide election and becomes effective.

Proposed law repeals present law that provides for an additional judgeship for the Court of Appeals for the Fourth Circuit who is assigned to the La. Supreme Court.

Proposed law specifies that precincts referenced in district descriptions are those precincts contained in the file named "2024 Precinct Shapefiles (01-10-2024)" available on the La. legislature's website. The 2024 Precinct Shapefiles are based upon those Voting Districts (VTDs) contained in the 2020 Census Redistricting TIGER/Line Shapefiles for the State of La. as those files have been modified and validated through the data verification program of the La. House of Representatives and the La. Senate to represent precinct changes submitted through Jan. 10, 2024, to the Legislature of La. by parish governing authorities.

Also specifies that if any such precinct has been subdivided by action of the parish governing authority on a nongeographic basis or subdivided by action of the parish governing authority on a geographic basis in accordance with present law, the enumeration of the general precinct designation shall include all nongeographic and all geographic subdivisions thereof. Further provides that the territorial limits of the districts as enacted shall continue in effect until changed by law regardless of any subsequent change made to the precincts by the parish governing authority.

Proposed law provides that the initial terms of office of supreme court justices to be elected from Districts 8 and 9 shall begin on Jan. 1, 2025.

Proposed law provides that the initial term of office of the justice elected from District 8 shall end on Jan. 1, 2035, and the initial term of office of the justice elected from District 9 shall end on Jan. 1, 2027.

Effective if and when the proposed amendment of Article V of the Constitution of Louisiana contained in the Act which originated as House Bill No. ___ of this 2024 1st E.S. is adopted at a statewide election and becomes effective.

(Adds R.S. 13:101.2 and 101.3; Repeals R.S. 13:101, 101.1, and 312.4)

Plan Statistics

Plan: HLS 24 1ES-29 (Carter, W)

<u>Districts:</u>	<u># of Members</u>	<u>Actual Population</u>	<u>Ideal Population</u>	<u>Absolute Deviation</u>	<u>Relative Deviation</u>
District 1	1	513,838	517,528	-3,690	-0.713%
District 2	1	537,686	517,528	20,158	3.895%
District 3	1	532,839	517,528	15,311	2.958%
District 4	1	464,892	517,528	-52,636	-10.171%
District 5	1	527,784	517,528	10,256	1.982%
District 6	1	559,263	517,528	41,735	8.064%
District 7	1	518,734	517,528	1,206	0.233%
District 8	1	481,841	517,528	-35,687	-6.896%
District 9	1	520,880	517,528	3,352	0.648%

Grand Total:	9	4,657,757	4,657,752
--------------	---	-----------	-----------

Ideal Population Per Member:	517528		
Number of Districts for Plan Type:	9		
Range of District Populations:	464,892	to	559,263
Absolute Mean Deviation:	10,486		
Absolute Range:	-52,636	to	41,735
Absolute Overall Range:	94,371		
Relative Mean Deviation:	3.95%		
Relative Range:	-10.17%	to	8.06%
Relative Overall Range:	18.23%		

<i>Ideal - Actual:</i>	-5
<i>Remainder:</i>	5
<i>Unassigned Population:</i>	0

Total Population

Plan: HLS 24 1ES-29 (Carter, W)

	Total Population	Total White	Total Black	Total Asian	Total American Indian	Total Other	Total Hispanic	VAP Total	VAP White	VAP Black	VAP Asian	VAP American Indian	VAP Other	VAP Hispanic Total
District 1	513,838	360,731	68,880	18,080	9,766	56,381	68,703	401,164	291,087	48,821	13,329	7,268	40,659	48,644
	100.000%	70.203%	13.405%	3.519%	1.901%	10.973%	13.371%	100.000%	72.561%	12.170%	3.323%	1.812%	10.135%	12.126%
District 2	537,686	356,896	139,940	9,737	11,087	20,026	23,416	414,609	283,454	101,856	7,042	8,494	13,763	15,528
	100.000%	66.376%	26.026%	1.811%	2.062%	3.724%	4.355%	100.000%	68.367%	24.567%	1.698%	2.049%	3.320%	3.745%
District 3	532,839	352,303	137,839	10,885	7,538	24,274	28,747	403,430	276,356	96,969	7,889	5,552	16,664	19,235
	100.000%	66.118%	25.869%	2.043%	1.415%	4.556%	5.395%	100.000%	68.502%	24.036%	1.955%	1.376%	4.131%	4.768%
District 4	464,892	183,901	255,935	4,493	7,069	13,494	16,787	353,453	149,991	183,958	3,576	5,406	10,522	12,759
	100.000%	39.558%	55.053%	0.966%	1.521%	2.903%	3.611%	100.000%	42.436%	52.046%	1.012%	1.529%	2.977%	3.610%
District 5	527,784	352,621	138,837	6,147	12,485	17,694	22,563	402,984	276,866	99,640	4,501	9,192	12,785	15,944
	100.000%	66.812%	26.306%	1.165%	2.366%	3.353%	4.275%	100.000%	68.704%	24.726%	1.117%	2.281%	3.173%	3.956%
District 6	559,263	368,301	129,246	11,835	19,336	30,545	36,854	421,331	289,725	89,287	8,393	13,226	20,700	24,257
	100.000%	65.855%	23.110%	2.116%	3.457%	5.462%	6.590%	100.000%	68.764%	21.192%	1.992%	3.139%	4.913%	5.757%
District 7	518,734	164,990	286,073	21,829	6,260	39,582	53,435	409,151	143,100	215,022	17,604	4,953	28,472	38,368
	100.000%	31.806%	55.148%	4.208%	1.207%	7.631%	10.301%	100.000%	34.975%	52.553%	4.303%	1.211%	6.959%	9.377%
District 8	481,841	171,352	268,779	9,952	4,596	27,162	33,634	371,481	142,035	198,850	7,796	3,504	19,296	23,541
	100.000%	35.562%	55.782%	2.065%	0.954%	5.637%	6.980%	100.000%	38.235%	53.529%	2.099%	0.943%	5.194%	6.337%
District 9	520,880	346,557	117,590	14,330	8,923	33,480	38,410	392,945	271,897	81,366	10,286	6,645	22,751	25,386
	100.000%	66.533%	22.575%	2.751%	1.713%	6.428%	7.374%	100.000%	69.195%	20.707%	2.618%	1.691%	5.790%	6.460%
Grand Total	4,657,757	2,657,652	1,543,119	107,288	87,060	262,638	322,549	3,570,548	2,124,511	1,115,769	80,416	64,240	185,612	223,662
	100.000%	57.059%	33.130%	2.303%	1.869%	5.639%	6.925%	100.000%	59.501%	31.249%	2.252%	1.799%	5.198%	6.264%

Voter Registration

Plan: HLS 24 1ES-29 (Carter, W)

	Reg Total Dec 2023	Reg White Dec 2023	Reg Black Dec 2023	Reg Other Dec 2023	Reg Dem Total Dec 2023	Reg Rep Total Dec 2023	Reg Other Total Dec 2023
District 1	325,625	260,338	33,090	32,197	79,398	145,078	101,149
	81.170%	79.950%	10.162%	9.888%	24.383%	44.554%	31.063%
District 2	312,944	229,464	71,318	12,162	90,725	142,500	79,719
	75.479%	73.324%	22.789%	3.886%	28.991%	45.535%	25.474%
District 3	306,547	224,568	68,220	13,759	97,839	122,685	86,023
	75.985%	73.257%	22.254%	4.488%	31.916%	40.022%	28.062%
District 4	265,405	116,199	140,571	8,635	134,019	68,023	63,363
	75.089%	43.782%	52.965%	3.254%	50.496%	25.630%	23.874%
District 5	311,324	222,315	77,523	11,486	111,565	124,013	75,746
	77.255%	71.410%	24.901%	3.689%	35.836%	39.834%	24.330%
District 6	325,742	242,035	66,393	17,314	106,895	127,667	91,180
	77.313%	74.303%	20.382%	5.315%	32.816%	39.193%	27.991%
District 7	307,491	108,108	166,939	32,444	187,829	35,390	84,272
	75.153%	35.158%	54.291%	10.551%	61.084%	11.509%	27.406%
District 8	287,317	109,569	162,951	14,797	160,202	55,998	71,117
	77.344%	38.135%	56.715%	5.150%	55.758%	19.490%	24.752%
District 9	299,892	227,850	54,824	17,218	84,034	130,272	85,586
	76.319%	75.977%	18.281%	5.741%	28.021%	43.440%	28.539%
Grand Total	2,742,287	1,740,446	841,829	160,012	1,052,506	951,626	738,155

Splits

Plan: HLS 24 1ES-29 (Carter, W)

	Total Population	Total White	Total Black	Total Asian	Total American Indian	Total Other	VAP Total	VAP White	VAP Black	VAP Asian	VAP American Indian	VAP Other	Reg Total Dec 2023	Reg White Dec 2023	Reg Black Dec 2023	Reg Other Dec 2023
District 1																
*Jefferson	221,854	141,916	28,628	11,152	3,780	36,378	177,449	118,827	20,862	8,414	2,854	26,492	132,187	102,723	11,012	18,452
*Orleans	27,414	22,174	1,609	1,154	326	2,151	21,487	17,639	1,198	840	253	1,557	19,131	16,353	949	1,829
St. Tammany	264,570	196,641	38,643	5,774	5,660	17,852	202,228	154,621	26,761	4,075	4,161	12,610	174,307	141,262	21,129	11,916
District 1	513,838	360,731	68,880	18,080	9,766	56,381	401,164	291,087	48,821	13,329	7,268	40,659	325,625	260,338	33,090	32,197
	100.000%	70.203%	13.405%	3.519%	1.901%	10.973%	100.000%	72.561%	12.170%	3.323%	1.812%	10.135%	81.170%	79.950%	10.162%	9.888%
District 2																
Bienville	12,981	6,950	5,600	57	207	167	10,073	5,486	4,284	30	162	111	8,336	4,509	3,728	99
*Bossier	125,276	80,410	30,092	3,433	3,221	8,120	93,476	62,397	20,848	2,399	2,438	5,394	64,691	47,985	12,838	3,868
*Caddo	108,022	75,609	22,902	3,076	2,466	3,969	84,810	61,438	16,428	2,246	1,870	2,828	63,897	49,037	11,386	3,474
Caldwell	9,645	7,646	1,632	51	150	166	7,478	5,969	1,224	46	116	123	5,813	4,959	762	92
Claiborne	14,170	7,263	6,360	88	185	274	11,507	6,258	4,824	55	140	230	8,390	4,557	3,677	156
*De Soto	1,694	1,344	192	2	94	62	1,288	1,026	141	1	76	44	996	849	110	37
*East Carroll	537	283	226	5	4	19	432	230	183	4	3	12	326	171	151	4
Franklin	19,774	12,492	6,802	70	205	205	15,028	9,901	4,779	44	153	151	12,350	8,524	3,718	108
Jackson	15,031	9,967	4,166	175	255	468	11,783	7,967	3,125	140	174	377	9,375	6,570	2,610	195
Lincoln	48,396	26,034	19,364	892	662	1,444	38,655	21,306	15,119	744	526	960	24,408	15,139	8,357	912
Morehouse	25,629	12,281	12,484	160	370	334	20,062	10,095	9,300	117	279	271	15,440	7,806	7,377	257
*Ouachita	88,706	71,528	10,792	1,431	2,063	2,892	67,100	55,207	7,266	1,003	1,609	2,015	55,990	48,673	5,350	1,967
Union	21,107	14,460	5,224	62	338	1,023	16,632	11,807	3,861	39	254	671	14,802	10,847	3,497	458
Webster	36,967	22,735	12,679	208	687	658	28,753	18,144	9,464	154	558	433	21,259	14,068	6,744	447
West Carroll	9,751	7,894	1,425	27	180	225	7,532	6,223	1,010	20	136	143	6,871	5,770	1,013	88
District 2	537,686	356,896	139,940	9,737	11,087	20,026	414,609	283,454	101,856	7,042	8,494	13,763	312,944	229,464	71,318	12,162
	100.000%	66.376%	26.026%	1.811%	2.062%	3.724%	100.000%	68.367%	24.567%	1.698%	2.049%	3.320%	75.479%	73.324%	22.789%	3.886%
District 3																
Acadia	57,576	44,480	10,864	238	573	1,421	42,943	34,071	7,383	173	400	916	36,151	29,438	5,995	718
Calcasieu	216,785	139,772	59,386	4,702	3,536	9,389	163,166	108,789	41,898	3,359	2,604	6,516	111,819	80,364	26,493	4,962
Cameron	5,617	5,232	125	30	75	155	4,358	4,100	79	23	47	109	4,072	3,936	61	75
Jefferson Davis	32,250	25,066	5,837	183	472	692	24,039	19,121	4,006	111	325	476	18,733	15,509	2,784	440
*Lafayette	220,611	137,753	61,627	5,732	2,882	12,617	168,924	110,275	43,603	4,223	2,176	8,647	135,772	95,321	32,887	7,564
District 3	532,839	352,303	137,839	10,885	7,538	24,274	403,430	276,356	96,969	7,889	5,552	16,664	306,547	224,568	68,220	13,759
	100.000%	66.118%	25.869%	2.043%	1.415%	4.556%	100.000%	68.502%	24.036%	1.955%	1.376%	4.131%	75.985%	73.257%	22.254%	4.488%
District 4																
*Avoyelles	13,163	7,812	4,793	88	308	162	10,098	6,279	3,403	72	210	134	7,470	4,706	2,508	256
*Bossier	3,470	642	2,459	59	52	258	2,400	534	1,592	49	39	186	1,035	244	717	74
*Caddo	129,826	27,848	96,402	958	1,374	3,244	97,597	23,621	69,931	762	1,088	2,195	68,045	15,344	50,085	2,616

Splits

Plan: HLS 24 1ES-29 (Carter, W)

	Total Population	Total White	Total Black	Total Asian	Total American Indian	Total Other	VAP Total	VAP White	VAP Black	VAP Asian	VAP American Indian	VAP Other	Reg Total Dec 2023	Reg White Dec 2023	Reg Black Dec 2023	Reg Other Dec 2023
District 4																
Catahoula	8,906	5,776	2,395	46	119	570	6,951	4,557	1,736	33	87	538	6,113	4,363	1,695	55
*Concordia	17,519	9,163	7,701	121	208	326	13,311	7,234	5,599	99	153	226	10,677	6,094	4,404	179
*De Soto	25,118	13,940	9,781	115	646	636	19,152	10,883	7,284	85	481	419	16,891	10,156	6,207	528
*East Carroll	6,922	1,771	5,046	24	39	42	5,469	1,543	3,860	15	24	27	4,238	1,047	3,154	37
Grant	22,169	17,709	3,335	133	644	348	17,527	13,964	2,717	97	507	242	12,226	10,764	1,120	342
La Salle	14,791	11,348	1,422	283	372	1,366	11,563	8,636	1,065	264	271	1,327	8,380	7,633	583	164
Madison	10,017	3,475	6,363	20	59	100	7,435	2,906	4,391	9	48	81	7,068	2,439	4,518	111
Natchitoches	37,515	19,361	15,725	255	861	1,313	29,349	16,010	11,415	198	683	1,043	20,675	11,761	8,016	898
*Ouachita	71,662	17,017	50,425	1,357	598	2,265	53,100	14,767	35,024	1,115	450	1,744	39,640	9,476	28,671	1,493
*Rapides	56,506	20,513	32,944	684	970	1,395	42,986	17,086	23,536	524	755	1,085	31,487	12,788	17,352	1,347
Red River	7,620	4,195	3,106	25	171	123	5,714	3,338	2,164	3	116	93	5,475	3,034	2,358	83
Richland	20,043	11,785	7,603	83	258	314	15,383	9,338	5,546	66	203	230	13,141	8,144	4,753	244
*Sabine	1,743	1,208	396	9	101	29	1,277	917	272	3	61	24	1,097	780	275	42
Tensas	4,147	1,744	2,312	23	26	42	3,235	1,446	1,728	12	23	26	3,485	1,510	1,937	38
Winn	13,755	8,594	3,727	210	263	961	10,906	6,932	2,695	170	207	902	8,262	5,916	2,218	128
District 4	464,892	183,901	255,935	4,493	7,069	13,494	353,453	149,991	183,958	3,576	5,406	10,522	265,405	116,199	140,571	8,635
	100.000%	39.558%	55.053%	0.966%	1.521%	2.903%	100.000%	42.436%	52.046%	1.012%	1.529%	2.977%	75.089%	43.782%	52.965%	3.254%
District 5																
Allen	22,750	16,327	4,490	246	947	740	17,510	12,751	3,275	182	646	656	11,079	8,704	1,920	455
*Avoyelles	26,530	17,813	6,885	346	459	1,027	20,480	13,990	4,908	307	360	915	13,968	10,536	3,114	318
Beauregard	36,549	29,529	4,649	402	1,052	917	27,489	22,304	3,495	269	773	648	22,071	18,639	2,264	1,168
*Concordia	1,168	1,112	24	1	25	6	906	874	14	1	14	3	742	722	14	6
*East Baton Rouge	34,390	26,981	4,977	367	658	1,407	26,030	20,932	3,407	242	512	937	23,318	19,553	3,066	699
East Feliciana	19,539	11,516	7,341	91	262	329	16,183	9,740	5,918	61	198	266	13,327	7,805	5,075	447
Evangeline	32,350	21,354	9,235	241	280	1,240	24,408	16,460	6,483	187	217	1,061	20,388	14,274	5,744	370
Pointe Coupee	20,758	12,395	7,504	107	159	593	16,250	10,108	5,502	91	119	430	14,107	9,040	4,837	230
*Rapides	73,517	56,997	9,648	1,744	2,132	2,996	55,806	44,287	6,669	1,262	1,579	2,009	43,799	37,168	4,607	2,024
*Sabine	20,412	13,828	3,465	85	2,622	412	15,787	11,137	2,383	63	1,909	295	12,473	9,507	1,637	1,329
St. Helena	10,920	4,527	6,031	39	134	189	8,463	3,805	4,371	28	109	150	8,260	3,626	4,492	142
St. Landry	82,540	43,611	35,836	499	636	1,958	61,811	34,209	25,497	353	451	1,301	52,429	28,933	22,135	1,361
*Tangipahoa	36,838	20,718	13,967	232	558	1,363	27,866	16,478	9,902	171	410	905	18,311	11,890	5,958	463
Vernon	48,750	35,087	7,611	1,442	1,600	3,010	36,261	26,765	5,133	1,074	1,160	2,129	22,409	18,129	2,608	1,672
Washington	45,463	29,943	13,434	216	736	1,134	34,951	23,743	9,732	154	561	761	27,151	18,603	7,892	656
West Feliciana	15,310	10,883	3,740	89	225	373	12,783	9,283	2,951	56	174	319	7,492	5,186	2,160	146

Splits

Plan: HLS 24 1ES-29 (Carter, W)

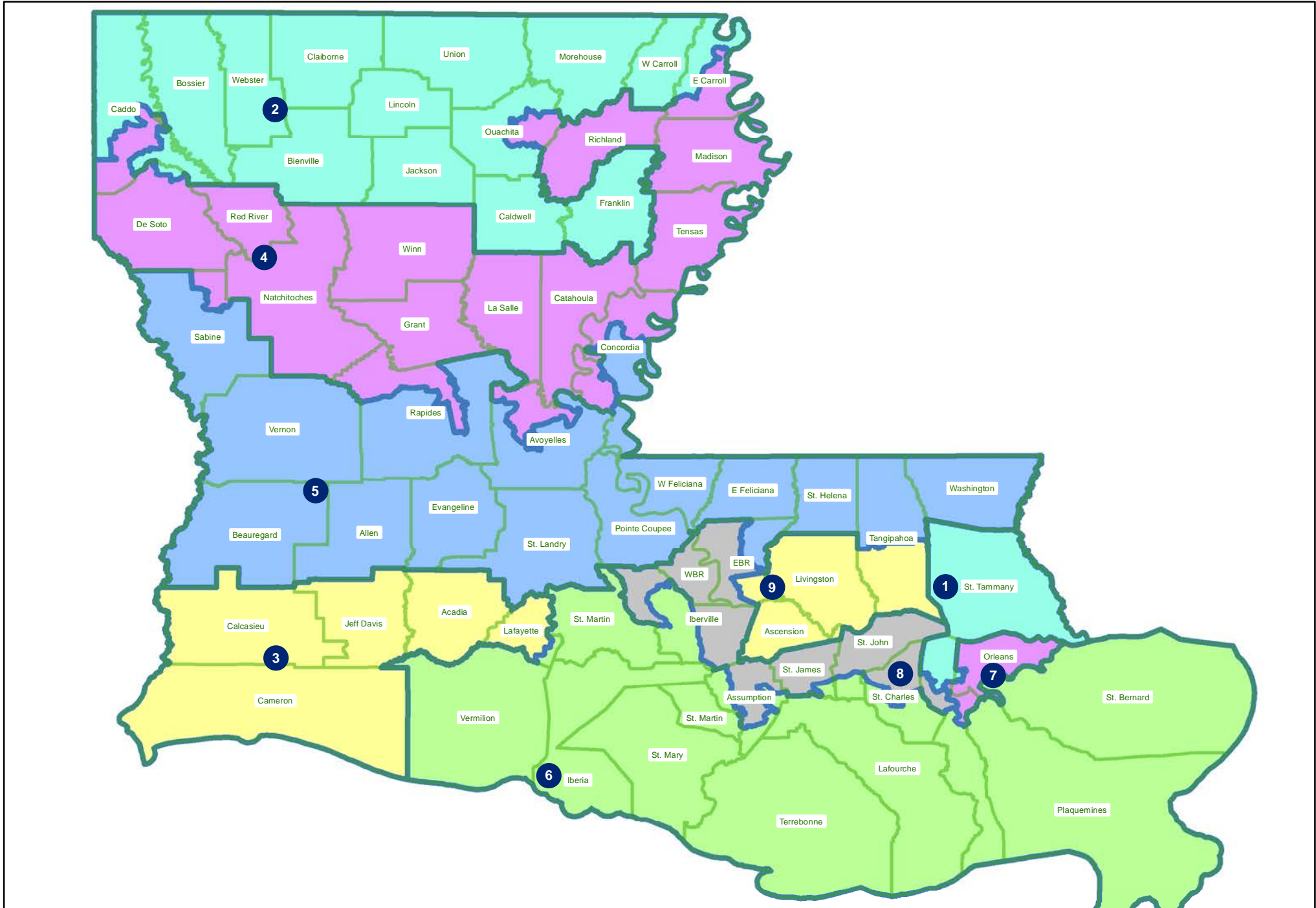
	Total Population	Total White	Total Black	Total Asian	Total American Indian	Total Other	VAP Total	VAP White	VAP Black	VAP Asian	VAP American Indian	VAP Other	Reg Total Dec 2023	Reg White Dec 2023	Reg Black Dec 2023	Reg Other Dec 2023
District 5	527,784	352,621	138,837	6,147	12,485	17,694	402,984	276,866	99,640	4,501	9,192	12,785	311,324	222,315	77,523	11,486
	100.000%	66.812%	26.306%	1.165%	2.366%	3.353%	100.000%	68.704%	24.726%	1.117%	2.281%	3.173%	77.255%	71.410%	24.901%	3.689%
District 6																
*Assumption	10,126	8,797	629	53	173	474	8,017	7,120	420	37	129	311	6,055	5,655	286	114
Iberia	69,929	39,206	24,556	2,123	794	3,250	52,791	31,295	17,069	1,562	581	2,284	42,188	26,848	13,441	1,899
*Iberville	3,203	3,028	59	5	54	57	2,612	2,480	36	4	46	46	2,285	2,222	20	43
*Jefferson	10,523	7,659	1,258	481	415	710	8,053	6,009	882	359	299	504	6,837	5,468	812	557
*Lafayette	21,142	15,610	3,509	722	328	973	14,951	11,333	2,314	441	211	652	13,037	10,477	1,858	702
Lafourche	97,557	71,710	15,855	1,025	4,224	4,743	74,619	56,838	11,077	738	2,777	3,189	54,238	45,481	6,277	2,480
Plaquemines	23,515	14,287	5,428	1,317	697	1,786	17,334	10,856	3,857	925	500	1,196	13,143	8,996	2,934	1,213
St. Bernard	43,764	24,497	12,309	1,381	947	4,630	31,775	18,992	7,944	982	688	3,169	25,685	18,044	5,593	2,048
*St. Charles	7,764	6,538	623	97	204	302	5,826	5,017	388	62	147	212	5,128	4,568	359	201
*St. James	3,403	2,162	1,132	9	23	77	2,725	1,762	888	7	17	51	2,509	1,564	898	47
*St. John the Baptist	225	188	19	0	8	10	186	157	16	0	7	6	115	113	0	2
St. Martin	51,767	33,259	15,921	597	539	1,451	39,404	26,278	11,293	407	413	1,013	33,997	23,306	9,880	811
St. Mary	49,406	26,949	15,991	835	1,670	3,961	37,521	21,594	11,520	593	1,173	2,641	29,204	17,999	9,570	1,635
Terrebonne	109,580	69,934	23,147	1,743	8,637	6,119	82,505	55,631	15,796	1,239	5,750	4,089	55,810	41,601	9,910	4,299
Vermilion	57,359	44,477	8,810	1,447	623	2,002	43,012	34,363	5,787	1,037	488	1,337	35,511	29,693	4,555	1,263
District 6	559,263	368,301	129,246	11,835	19,336	30,545	421,331	289,725	89,287	8,393	13,226	20,700	325,742	242,035	66,393	17,314
	100.000%	65.855%	23.110%	2.116%	3.457%	5.462%	100.000%	68.764%	21.192%	1.992%	3.139%	4.913%	77.313%	74.303%	20.382%	5.315%
District 7																
*Jefferson	162,151	60,702	68,713	10,127	2,920	19,689	124,442	50,487	50,152	7,924	2,258	13,621	88,232	38,336	37,298	12,598
*Orleans	356,583	104,288	217,360	11,702	3,340	19,893	284,709	92,613	164,870	9,680	2,695	14,851	219,259	69,772	129,641	19,846
District 7	518,734	164,990	286,073	21,829	6,260	39,582	409,151	143,100	215,022	17,604	4,953	28,472	307,491	108,108	166,939	32,444
	100.000%	31.806%	55.148%	4.208%	1.207%	7.631%	100.000%	34.975%	52.553%	4.303%	1.211%	6.959%	75.153%	35.158%	54.291%	10.551%
District 8																
*Assumption	10,913	4,925	5,591	43	85	269	8,599	4,025	4,287	20	68	199	7,268	3,322	3,845	101
*East Baton Rouge	266,612	81,145	163,617	6,967	2,157	12,726	207,360	69,347	121,607	5,613	1,708	9,085	151,653	48,821	94,936	7,896
*Iberville	27,038	11,805	13,671	197	220	1,145	21,474	9,982	10,196	145	175	976	17,621	7,777	9,464	380
*Jefferson	46,253	10,658	27,618	1,264	571	6,142	34,710	8,812	20,279	995	424	4,200	26,177	6,409	17,080	2,688
*St. Charles	44,785	27,012	13,305	740	721	3,007	33,715	21,137	9,502	467	520	2,089	28,454	18,843	7,911	1,700
*St. James	16,789	7,811	8,630	51	59	238	12,780	6,121	6,409	24	47	179	12,022	5,552	6,298	172
*St. John the Baptist	42,252	13,689	25,177	403	457	2,526	32,317	11,465	18,421	323	343	1,765	27,369	9,225	16,653	1,491
*Tangipahoa	0	0	0	0	0	0	0	0	0	0	0	0	0	0	0	0
West Baton Rouge	27,199	14,307	11,170	287	326	1,109	20,526	11,146	8,149	209	219	803	16,753	9,620	6,764	369

Splits

Plan: HLS 24 1ES-29 (Carter, W)

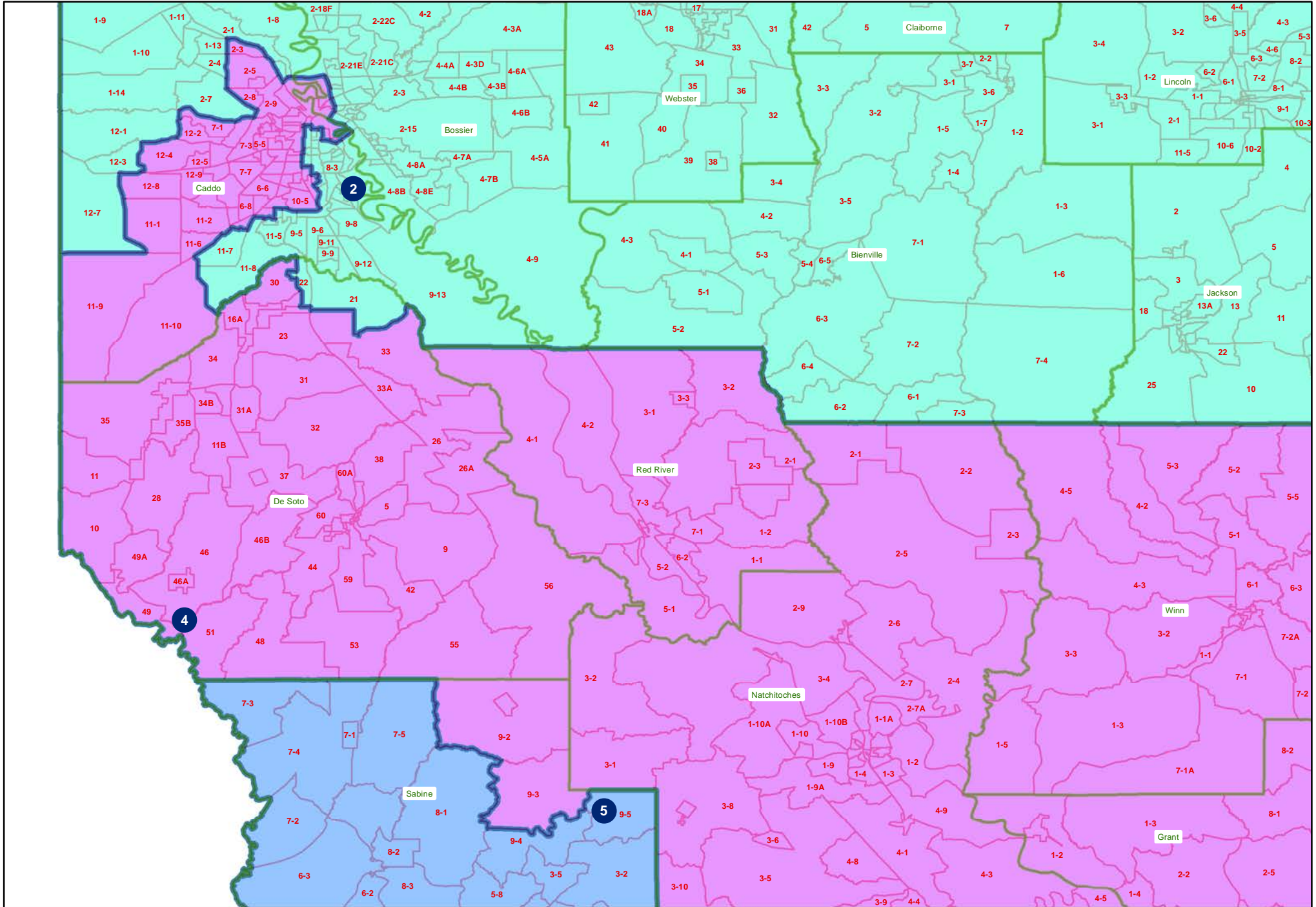
	Total Population	Total White	Total Black	Total Asian	Total American Indian	Total Other	VAP Total	VAP White	VAP Black	VAP Asian	VAP American Indian	VAP Other	Reg Total Dec 2023	Reg White Dec 2023	Reg Black Dec 2023	Reg Other Dec 2023
District 8	481,841	171,352	268,779	9,952	4,596	27,162	371,481	142,035	198,850	7,796	3,504	19,296	287,317	109,569	162,951	14,797
	100.000%	35.562%	55.782%	2.065%	0.954%	5.637%	100.000%	38.235%	53.529%	2.099%	0.943%	5.194%	77.344%	38.135%	56.715%	5.150%
District 9																
Ascension	126,500	81,141	32,216	2,300	2,004	8,839	91,957	61,136	22,139	1,514	1,390	5,778	78,646	55,542	18,828	4,276
*East Baton Rouge	155,779	87,943	44,804	9,091	1,912	12,029	122,222	73,602	31,776	6,744	1,527	8,573	93,866	64,371	21,500	7,995
Livingston	142,282	116,855	12,658	1,697	3,111	7,961	105,141	88,432	8,136	1,099	2,311	5,163	82,405	73,655	5,642	3,108
*Tangipahoa	96,319	60,618	27,912	1,242	1,896	4,651	73,625	48,727	19,315	929	1,417	3,237	44,975	34,282	8,854	1,839
District 9	520,880	346,557	117,590	14,330	8,923	33,480	392,945	271,897	81,366	10,286	6,645	22,751	299,892	227,850	54,824	17,218
	100.000%	66.533%	22.575%	2.751%	1.713%	6.428%	100.000%	69.195%	20.707%	2.618%	1.691%	5.790%	76.319%	75.977%	18.281%	5.741%

HLS 24 1ES-29 (Carter, W)
Statewide

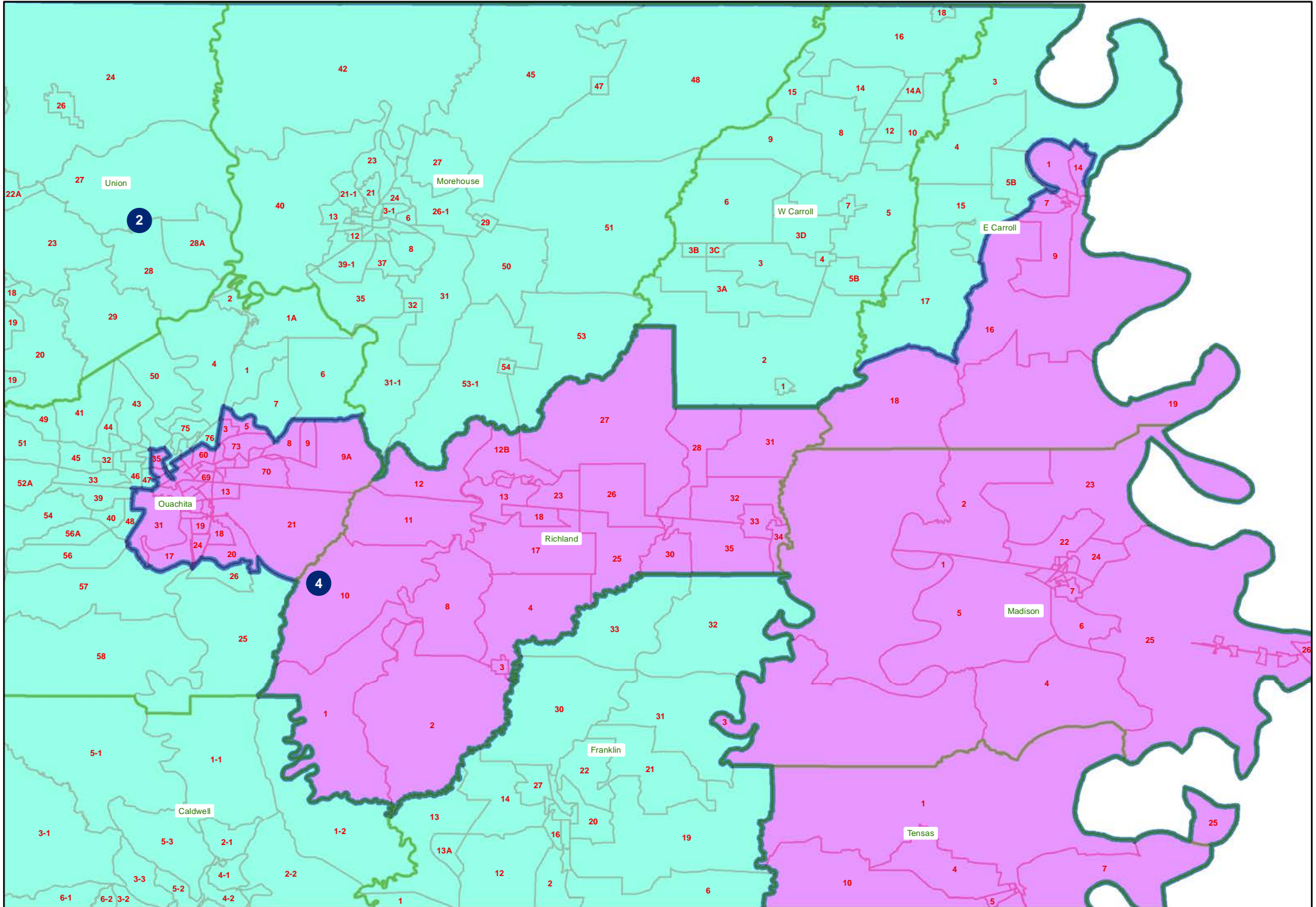


HLS 24 1ES-29 (Carter, W)

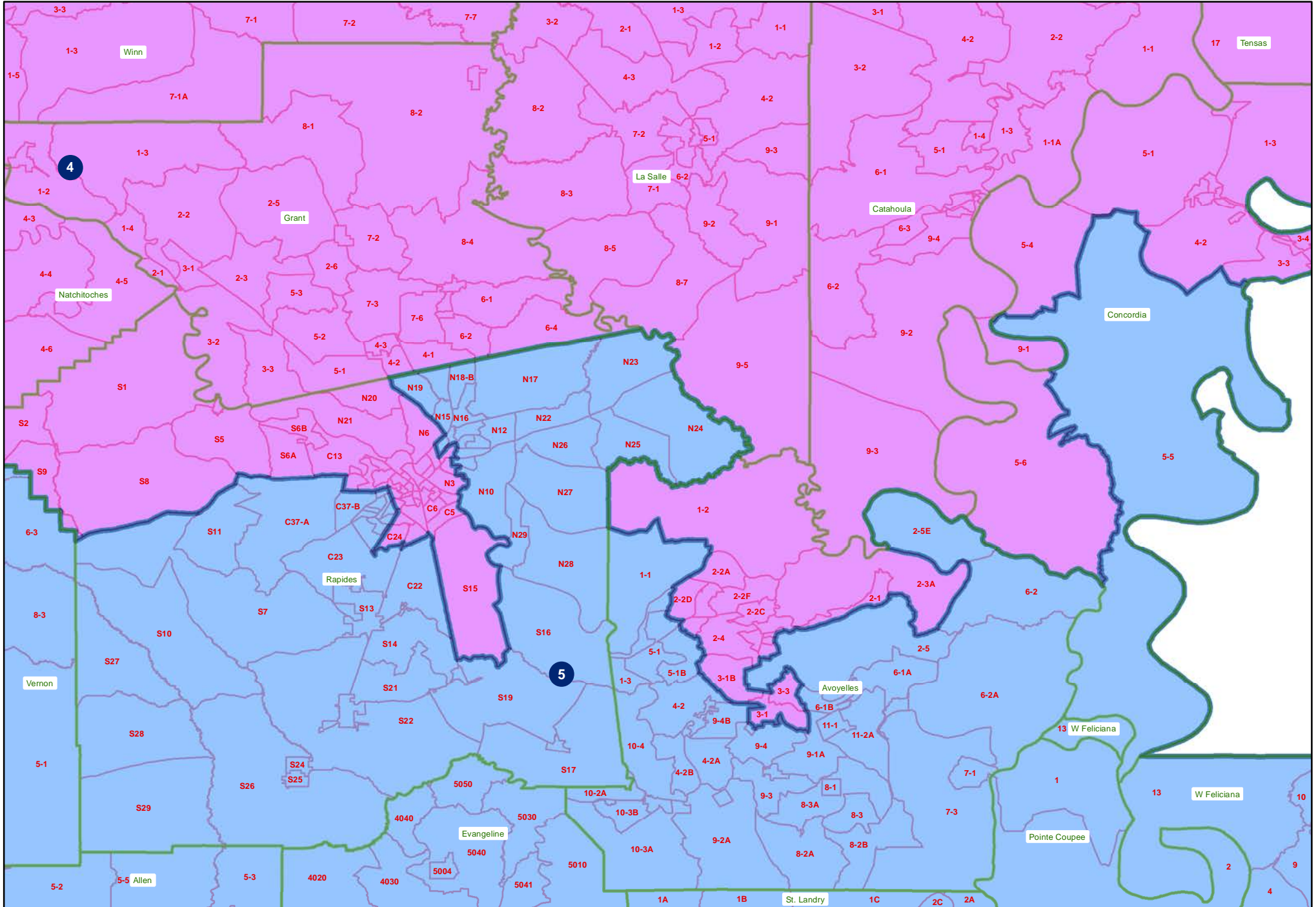
Northwest



HLS 24 1ES-29 (Carter, W)
Northeast

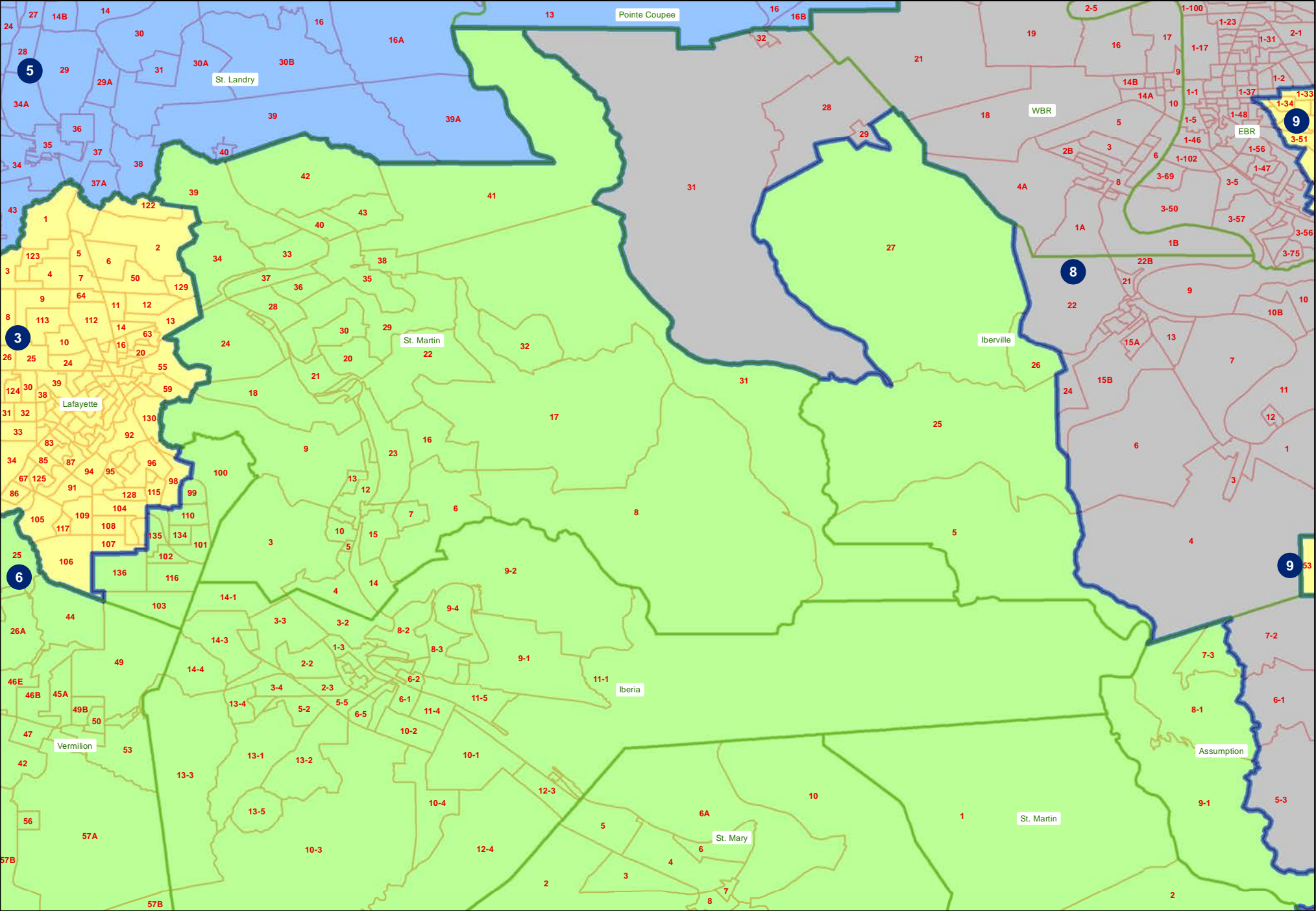


HLS 24 1ES-29 (Carter, W)
Central



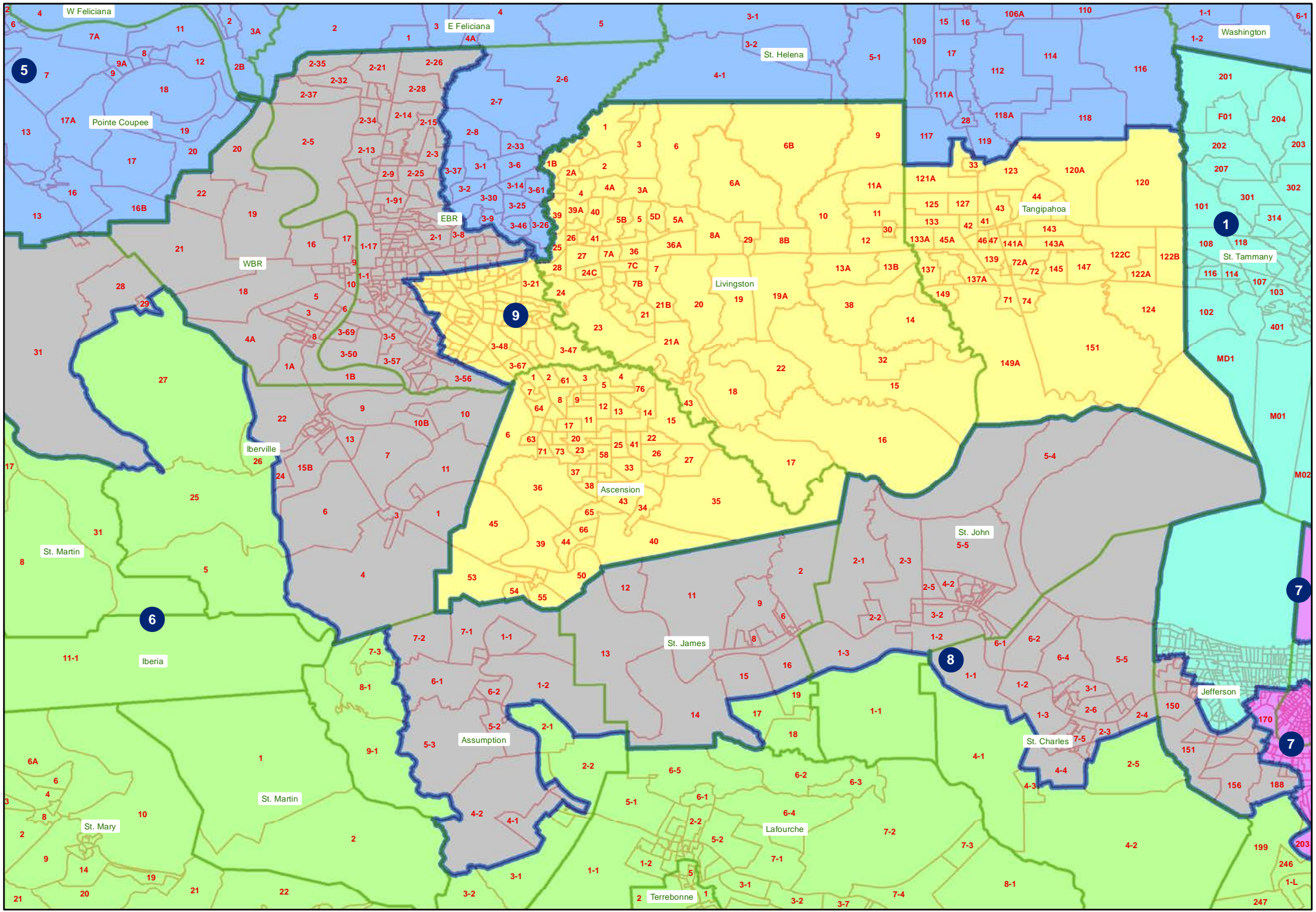
HLS 24 1ES-29 (Carter, W)

Lafayette, Iberville, and Assumption Parishes



HLS 24 1ES-29 (Carter, W)

Districts 8 and 9



HLS 24 1ES-29 (Carter, W)

Greater New Orleans

