

2024 First Extraordinary Session

HOUSE BILL NO. 5

BY REPRESENTATIVE MARCELLE

REAPPORTIONMENT/CONGRESS: Provides relative to the election districts for members of congress (Item #1)

1 AN ACT

2 To enact R.S. 18:1276.1 and to repeal R.S. 18:1276, relative to congressional districts; to
3 provide for the redistricting of Louisiana's congressional districts; to provide with
4 respect to positions and offices, other than congressional, which are based upon
5 congressional districts; to provide for effectiveness; and to provide for related
6 matters.

7 Be it enacted by the Legislature of Louisiana:

8 Section 1. R.S. 18:1276.1 is hereby enacted to read as follows:

9 §1276.1. Congressional districts

10 Louisiana shall be divided into six congressional districts, and the qualified
11 electors of each district shall elect one representative to the United States House of
12 Representatives. The districts shall be composed as follows:

- 13 (1) District 1 is composed of Precincts 1, 2, 3, 4, 5, 7, 8, 9, 10, 11, 12, 13, 14,
- 14 15, 16, 17, 18, 19, 20, 21, 22, 23, 24, 25, 26, 27, 28, 29, 30, 31, 32, 33, 34, 35, 36, 37,
- 15 38, 39, 40, 41, 42, 43, 44, 45, 46, 51, 52, 53, 54, 55, 56, 57, 58, 59, 60, 61, 62, 63, 64,
- 16 65, 66, 67, 68, 69, 70, 71, 72, 73, 74, 75, 76, 77, 78, 79, 80, 81, 82, 83, 84, 85, 86, 87,
- 17 88, 89, 90, 91, 92, 93, 94, 95, 96, 97, 98, 99, 100, 101, 102, 103, 105, 106, 117, 118,
- 18 119, 120, 121, 122, 123, 124, 125A, 125B, 126, 127, 128, 129, 130, 132, 134, 136,
- 19 138, 246, 247, 248, 1-GI, 1-H, 2-H, 3-H, 4-H, 5-H, 6-H, 7-H, 8-H, 9-H, 1-K, 2-K,
- 20 3-K, 4-K, 5-K, 6-KA, 6-KB, 7-KA, 7-KB, 8-K, 9-K, 10-K, 11-K, 12-K, 13-KA,

1 14-K, 15-K, 16-K, 17-K, 18-K, 19-K, 20-K, 25-K, 27-K, 28-K, 29-K, 34-K, 35-K,
2 and 1-L of Jefferson Parish; Lafourche Parish; Precincts 3-9, 3-12, 3-14, 3-15, 3-18,
3 3-19, 3-20, 4-6, 4-7, 4-8, 4-9, 4-11, 4-14, 4-15, 4-17, 4-17A, 4-18, 4-20, 4-21, 4-22,
4 4-23, 5-8, 5-9, 5-10, 5-11, 5-12, 5-13, 5-15, 5-16, 5-17, 5-18, 6-9, 7-17, 7-41, 7-42,
5 9-45, 9-45A, 13-1, 13-2, 13-3, 13-4, 13-5, 13-6, 13-7, 13-8, 13-9, 13-10, 13-11,
6 13-12, 13-13, 13-14, 13-15, 13-16, 14-1, 14-2, 14-3, 14-4, 14-5, 14-6, 14-7, 14-8,
7 14-9, 14-10, 14-11, 14-12, 14-13A, 14-14, 14-15, 14-16, 14-17, 14-18A, 14-19,
8 14-20, 14-21, 14-25, 16-1, 16-1A, 16-2, 16-3, 16-4, 16-5, 16-6, 16-7, 16-8, 17-1,
9 17-2, 17-3, 17-17, 17-18, 17-18A, 17-19, and 17-20 of Orleans Parish; Plaquemines
10 Parish; St. Bernard Parish; St. Mary Parish; Precincts 403, 408, 409, 412, 426, 603,
11 604, 606, 701, 702, 703, 704, 705, 706, 801, 802, 802A, 803, 804, 805, 806, 807,
12 808, 809, 810, 811, 812, 813, 814, 815, 815A, 816, 817, 818, 901, 902, 903, 903A,
13 904, 905, 906, 907, 909, 909A, 910, 911, 913, 914, 915, 916, 917, 918, 921, 922,
14 M02, M04, M09, M09A, M10, P01, S01, S02, S03, S04, S05, S06, S07, S08, S09,
15 S10, S11, S13, S15, S16, S17, S18, S19, S21, S22, S23, and S24 of St. Tammany
16 Parish; and Terrebonne Parish.

17 (2) District 2 is composed of Precincts 36, 37, 38, 39, 40, 42, 44, 45, 47, 48,
18 50, 51, 52, 53, 54, 55, 57, 65, and 66 of Ascension Parish; Assumption Parish;
19 Precincts 1-1, 1-3, 1-8, 3-2, 4-1, 4-2, 7-5, 8-2, 8-3, 9-1, 9-2, 9-4, 9-5, 10-1, 11-1,
20 11-3, 11-4, 11-5, 11-6, 12-1, 12-2, and 12-3 of Iberia Parish; Iberville Parish;
21 Precincts 104, 108, 115, 116, 131, 133, 150, 151, 152, 153, 154, 155, 156, 157A,
22 157B, 170, 171, 172, 173, 174, 175, 176, 177, 178, 179A, 179B, 180, 181, 182, 183,
23 184, 185A, 185B, 187, 188, 189, 190, 191, 192, 193A, 193B, 194A, 194B, 195, 196,
24 197A, 197B, 198, 199, 200, 201, 202, 203, 204, 205, 210, 211, 212, 213A, 213B,
25 213C, 214A, 214B, 215, 216A, 216B, 216C, 217, 225, 226, 227, 228, 229, 230, 231,
26 232A, 232B, 234, 235, 236, 237, 238A, 238B, 1-G, 2-G, 3-G, 4-G, 5-G, 6-G, 7-G,
27 8-G, 9-G, 10-G, 11-G, 12-G, 13-G, 13-KB, 21-K, 22-K, 23-K, 24-K, 26-K, 30-K,
28 31-K, 33-K, 1-W, 2-W, 3-W, 4-W, 5-W, 6-W, and 7-W of Jefferson Parish; Precincts
29 1-1, 1-2, 1-5, 1-6, 2-1, 2-2, 2-4, 2-6, 2-7, 3-1, 3-8, 4-2, 4-3, 5-1, 5-2, 5-3, 5-5, 5-7,

1 6-1, 6-2, 6-4, 6-6, 6-7, 6-8, 7-1, 7-2, 7-4, 7-5, 7-6, 7-7, 7-8, 7-9A, 7-10, 7-11, 7-12,
2 7-13, 7-14, 7-15, 7-16, 7-18, 7-19, 7-20, 7-21, 7-23, 7-24, 7-25, 7-25A, 7-26, 7-27,
3 7-27B, 7-28, 7-28A, 7-29, 7-30, 7-32, 7-33, 7-35, 7-37, 7-37A, 7-40, 8-1, 8-2, 8-4,
4 8-6, 8-7, 8-8, 8-9, 8-12, 8-13, 8-14, 8-15, 8-19, 8-20, 8-21, 8-22, 8-23, 8-24, 8-25,
5 8-26, 8-27, 8-28, 8-30, 9-1, 9-3, 9-4, 9-5, 9-6, 9-7, 9-8, 9-9, 9-10, 9-11, 9-12, 9-13,
6 9-14, 9-15, 9-16, 9-17, 9-19, 9-21, 9-23, 9-25, 9-26, 9-28, 9-28C, 9-29, 9-30, 9-30A,
7 9-31, 9-31A, 9-31B, 9-31D, 9-32, 9-33, 9-34A, 9-35, 9-35A, 9-36, 9-36B, 9-37,
8 9-38, 9-38A, 9-39, 9-39B, 9-40, 9-40A, 9-40C, 9-41, 9-41A, 9-41B, 9-41C, 9-41D,
9 9-42, 9-42C, 9-43A, 9-43B, 9-43C, 9-43E, 9-43F, 9-43G, 9-43H, 9-43I, 9-43J,
10 9-43K, 9-43L, 9-43M, 9-43N, 9-44, 9-44A, 9-44B, 9-44D, 9-44E, 9-44F, 9-44G,
11 9-44I, 9-44J, 9-44L, 9-44M, 9-44N, 9-44O, 9-44P, 9-44Q, 10-3, 10-6, 10-7, 10-8,
12 10-9, 10-11, 10-12, 10-13, 10-14, 11-2, 11-3, 11-4, 11-5, 11-8, 11-9, 11-10, 11-11,
13 11-12, 11-13, 11-14, 11-17, 12-1, 12-2, 12-3, 12-4, 12-5, 12-6, 12-7, 12-9, 12-10,
14 12-11, 12-12, 12-13, 12-14, 12-16, 12-17, 12-19, 14-23, 14-24A, 14-26, 15-1, 15-2,
15 15-3, 15-5, 15-6, 15-8, 15-9, 15-10, 15-11, 15-12, 15-12A, 15-13, 15-13A, 15-13B,
16 15-14, 15-14A, 15-14B, 15-14C, 15-14D, 15-14E, 15-14F, 15-14G, 15-15, 15-15A,
17 15-15B, 15-16, 15-17, 15-17A, 15-17B, 15-18, 15-18A, 15-18B, 15-18C, 15-18D,
18 15-18E, 15-18F, 15-19, 15-19A, 15-19B, 15-19C, 16-9, 17-4, 17-5, 17-6, 17-7, 17-8,
19 17-9, 17-10, 17-11, 17-12, 17-13, 17-13A, 17-14, 17-15, and 17-16 of Orleans
20 Parish; St. Charles Parish; St. James Parish; St. John the Baptist Parish; and
21 St. Martin Parish.

22 (3) District 3 is composed of Acadia Parish; Allen Parish; Beauregard Parish;
23 Calcasieu Parish; Cameron Parish; Evangeline Parish; Precincts 1-7, 2-1, 2-2, 2-3,
24 3-3, 3-4, 3-5, 4-3, 5-1, 5-2, 5-3, 5-5, 6-1, 6-2, 6-4, 6-5, 7-1, 7-2, 7-4, 8-1, 10-2, 10-3,
25 10-4, 12-4, 13-1, 13-2, 13-3, 13-4, 13-5, 14-1, 14-3, 14-4, and 14-5 of Iberia Parish;
26 Jefferson Davis Parish; Precincts 3, 8, 25, 26, 27, 28, 29, 30, 31, 32, 33, 34, 35, 36,
27 37, 38, 39, 40, 41, 42, 43, 44, 45, 46, 47, 48, 49, 65, 66, 67, 69, 70, 71, 72, 73, 74, 75,
28 76, 77, 78, 79, 80, 81, 82, 83, 84, 85, 86, 87, 88, 89, 90, 91, 92, 93, 94, 95, 96, 97, 98,
29 99, 100, 101, 102, 103, 104, 105, 106, 107, 108, 109, 110, 111, 114, 115, 116, 117,

1 118, 119, 120, 121, 124, 125, 126, 127, 128, 130, 131, 133, 134, 135, and 136 of
 2 Lafayette Parish; Precincts C22, C23, C31, C32, C33, C34, C35, C36, C37-A,
 3 C37-B, C41, C42, N6, N7, N11, N12, N13-A, N13-B, N14-A, N14-B, N15, N16,
 4 N17, N18-A, N18-B, N19, N20, N21, N22, N23, N24, N25, N26, S1, S2, S4, S5,
 5 S6A, S6B, S7, S8, S9, S10, S11, S13, S14, S21, S22, S23, S24, S25, S26, S27, S28,
 6 and S29 of Rapides Parish; Vermilion Parish; and Precincts 1-1, 1-1A, 1-1B, 1-4,
 7 1-5, 1-6A, 1-7, 1-7B, 1-8, 1-9, 4-1, 4-2, 4-3, 4-3A, 4-3B, 4-3C, 4-3G, 4-3K, 4-3L,
 8 4-3N, 5-1, 5-2, 5-2A, 6-1, 6-2, 6-3, 6-4, 7-1, 7-2, 7-2B, 7-3, 7-4, 7-4A, 7-5, 7-5A,
 9 7-5D, 8-1, 8-2, and 8-3 of Vernon Parish.

10 (4) District 4 is composed of Bienville Parish; Bossier Parish; Caddo Parish;
 11 Caldwell Parish; Claiborne Parish; De Soto Parish; Grant Parish; Jackson Parish; La
 12 Salle Parish; Lincoln Parish; Natchitoches Parish; Precincts 1, 1A, 2, 4, 6, 7, 25, 31,
 13 32, 33, 34, 35, 36, 37, 38, 39, 40, 41, 42, 43, 44, 44A, 45, 46, 48, 49, 50, 51, 51A, 52,
 14 52A, 53, 54, 55, 56, 56A, 57, 58, 61, 64, 71, 75, 76, 77, and 78 of Ouachita Parish;
 15 Red River Parish; Sabine Parish; Union Parish; Precincts 1-2, 1-3, 1-3C, 1-4B, 1-4C,
 16 1-5A, 1-6, 1-6B, 1-8A, 2-1, 2-1A, 2-2, 2-2A, 2-3, 2-4, 3-1, 3-2, 3-3, 3-4, and 3-5 of
 17 Vernon Parish; Webster Parish; and Winn Parish.

18 (5) District 5 is composed of Avoyelles Parish; Catahoula Parish; Concordia
 19 Parish; Precincts 1-1, 1-2, 1-3, 1-4, 1-5, 1-6, 1-7, 1-9, 1-10, 1-11, 1-13, 1-14, 1-15,
 20 1-16, 1-17, 1-18, 1-19, 1-20, 1-21, 1-22, 1-23, 1-24, 1-25, 1-26, 1-27, 1-28, 1-29,
 21 1-30, 1-31, 1-32, 1-33, 1-36, 1-37, 1-38, 1-45, 1-50, 1-51, 1-52, 1-53, 1-54, 1-55,
 22 1-57, 1-58, 1-60, 1-61, 1-62, 1-63, 1-67, 1-68, 1-70, 1-71, 1-72, 1-74, 1-77, 1-78,
 23 1-81, 1-82, 1-83, 1-84, 1-85, 1-86, 1-87, 1-88, 1-91, 1-92, 1-93, 1-94, 1-95, 1-96,
 24 1-97, 1-100, 1-101, 1-104, 2-1, 2-2, 2-3, 2-4, 2-5, 2-6, 2-7, 2-9, 2-10, 2-11, 2-12,
 25 2-13, 2-14, 2-15, 2-16, 2-17, 2-18, 2-19, 2-20, 2-21, 2-22, 2-23, 2-24, 2-25, 2-26,
 26 2-27, 2-28, 2-29, 2-30, 2-31, 2-32, 2-34, 2-35, 2-36, 2-37, 2-38, 3-8, 3-24, 3-28, 3-32,
 27 3-42, 3-54, and 3-72 of East Baton Rouge Parish; East Carroll Parish; East Feliciana
 28 Parish; Franklin Parish; Precincts 1, 2, 4, 5, 6, 7, 9, 10, 11, 12, 13, 14, 15, 16, 17, 18,
 29 19, 20, 21, 22, 23, 24, 50, 51, 52, 53, 54, 55, 56, 57, 58, 59, 60, 61, 63, 64, 68, 112,

1 113, 122, 123, and 129 of Lafayette Parish; Madison Parish; Morehouse Parish;
2 Precincts 3, 5, 8, 9, 9A, 10, 11, 12, 13, 14, 15, 16, 17, 18, 19, 20, 21, 22, 23, 24, 26,
3 27, 28, 30, 47, 59, 60, 62, 63, 65, 65A, 66, 67, 68, 69, 70, 72, 73, 74, and 79 of
4 Ouachita Parish; Pointe Coupee Parish; Precincts C1, C2, C3, C4, C5, C6, C7, C8,
5 C9, C10, C11-A, C11-B, C13, C14, C15, C17, C18, C19, C20, C21, C24, C25, C26,
6 C27, C28, C30, C38-A, C38-B, C39, C40, N1, N2, N3, N4, N5, N8, N9, N10, N27,
7 N28, N29, S15, S16, S17, S18, S19, and S20 of Rapides Parish; Richland Parish;
8 St. Helena Parish; St. Landry Parish; Precincts 2, 6, 11, 15, 16, 17, 28, 101, 102, 104,
9 105, 106, 106A, 107, 108, 109, 111A, and 115B of Tangipahoa Parish; Tensas
10 Parish; West Baton Rouge Parish; West Carroll Parish; and West Feliciana Parish.

11 (6) District 6 is composed of Precincts 1, 2, 3, 4, 5, 6, 7, 8, 9, 10, 11, 12, 13,
12 14, 15, 16, 17, 18, 19, 20, 21, 22, 23, 24, 25, 26, 27, 28, 30, 31, 32, 33, 34, 35, 41, 43,
13 58, 61, 62, 63, 64, 68, 69, 71, 72, 73, 76, 77, and 78 of Ascension Parish; Precincts
14 1-8, 1-12, 1-34, 1-35, 1-39, 1-40, 1-41, 1-42, 1-43, 1-44, 1-46, 1-47, 1-48, 1-49, 1-56,
15 1-59, 1-64, 1-65, 1-66, 1-69, 1-73, 1-75, 1-76, 1-79, 1-80, 1-89, 1-90, 1-98, 1-99,
16 1-102, 1-103, 1-105, 1-107, 2-8, 2-33, 3-1, 3-2, 3-3, 3-4, 3-5, 3-6, 3-7, 3-9, 3-10,
17 3-11, 3-12, 3-13, 3-14, 3-15, 3-16, 3-17, 3-18, 3-19, 3-20, 3-21, 3-22, 3-23, 3-25,
18 3-26, 3-27, 3-29, 3-30, 3-31, 3-33, 3-34, 3-35, 3-36, 3-37, 3-38, 3-39, 3-40, 3-41,
19 3-43, 3-44, 3-45, 3-46, 3-47, 3-48, 3-49, 3-50, 3-51, 3-52, 3-53, 3-55, 3-56, 3-57,
20 3-58, 3-59, 3-60, 3-61, 3-62, 3-63, 3-64, 3-65, 3-66, 3-67, 3-68, 3-69, 3-70, 3-71,
21 3-73, 3-74, 3-75, and 3-76 of East Baton Rouge Parish; Livingston Parish; Precincts
22 101, 102, 103, 104, 105, 106, 106A, 107, 108, 110, 111, 112, 113, 114, 115, 116,
23 118, 201, 202, 203, 204, 205, 206, 207, 301, 302, 303, 304, 305, 306, 307, 308, 309,
24 310, 312, 312A, 313, 314, 401, 402, 404, 405, 406, 407, 410, 411, 413, 414, 415,
25 416, 417, 418, 419, 420, 421, 422, 427, 429, 430, 501, 502, 503, 504, 505, 602, 605,
26 609, A01, A02, A02A, A03, A04, C01, C02, C03, C04, C06, C07, C08, C09, C11,
27 F01, M01, M06, M07, M08, M11, M12, and MD1 of St. Tammany Parish; Precincts
28 33, 40A, 41, 42, 43, 44, 45A, 45B, 46, 47, 49, 70, 70A, 71, 72, 72A, 73, 74, 110,
29 112, 114, 116, 117, 118, 118A, 119, 120, 120A, 120B, 121, 121A, 122A, 122B,

1 122C, 123, 124, 125, 127, 129A, 133, 133A, 137, 137A, 137B, 137C, 137D, 139,
2 141, 141A, 143, 143A, 145, 147, 149, 149A, and 151 of Tangipahoa Parish; and
3 Washington Parish.

4 Section 2. R.S. 18:1276 is hereby repealed in its entirety.

5 Section 3.(A) The precincts referenced in this Act are those contained in the file
6 named "2024 Precinct Shapefiles (1-10-2024)" available on the website of the Legislature
7 of Louisiana on the effective date of this Section. The 2024 Precinct Shapefiles are based
8 upon those Voting Districts (VTDs) contained in the 2020 Census Redistricting TIGER/Line
9 Shapefiles for the State of Louisiana as those files have been modified and validated through
10 the data verification program of the Louisiana House of Representatives and the Louisiana
11 Senate to represent precinct changes submitted through January 10, 2024, to the Legislature
12 of Louisiana by parish governing authorities pursuant to the provisions of R.S. 18:532 and
13 532.1.

14 (B) When a precinct referenced in this Act has been subdivided by action of the
15 parish governing authority on a nongeographic basis or subdivided by action of the parish
16 governing authority on a geographic basis in accordance with the provisions of R.S.
17 18:532.1, the enumeration in this Act of the general precinct designation shall include all
18 nongeographic and all geographic subdivisions thereof, however such subdivisions may be
19 designated.

20 (C) The territorial limits of the districts as provided in this Act shall continue in
21 effect until changed by law regardless of any subsequent change made to the precincts by
22 the parish governing authority.

23 Section 4. The provisions of this Act shall not reduce the term of office of any
24 person holding any position or office on the effective date of this Section for which the
25 appointment or election is based upon a congressional district as composed pursuant to R.S.
26 18:1276. Any position or office that is filled by appointment or election based upon a
27 congressional district and that is to be filled after January 3, 2025, shall be appointed or
28 elected from a district as it is described in Section 1 of this Act.

1 Section 5.(A) Solely for the purposes of qualifying for election and the conduct of
2 the election of representatives to the United States Congress at the regularly scheduled
3 election for representatives to the congress in 2024, the provisions of Section 1 of this Act
4 shall become effective upon signature of this Act by the governor or, if not signed by the
5 governor, upon expiration of the time for bills to become law without signature by the
6 governor, as provided in Article III, Section 18 of the Constitution of Louisiana. If this Act
7 is vetoed by the governor and subsequently approved by the legislature, the provisions of
8 Section 1 of this Act shall become effective on the day following such approval for the
9 purposes established in this Subsection.

10 (B) For subsequent elections of representatives to the United States Congress and
11 for all other purposes, the provisions of Section 1 of this Act shall become effective at noon
12 on January 3, 2025.

13 (C) The provisions of Section 2 of this Act shall become effective at noon on
14 January 3, 2025.

15 (D) The provisions of this Section and Sections 3 and 4 of this Act shall become
16 effective upon signature of this Act by the governor or, if not signed by the governor, upon
17 expiration of the time for bills to become law without signature by the governor, as provided
18 in Article III, Section 18 of the Constitution of Louisiana. If this Act is vetoed by the
19 governor and subsequently approved by the legislature, the provisions of this Section and
20 Sections 3 and 4 of this Act shall become effective on the day following such approval.

DIGEST

The digest printed below was prepared by House Legislative Services. It constitutes no part of the legislative instrument. The keyword, one-liner, abstract, and digest do not constitute part of the law or proof or indicia of legislative intent. [R.S. 1:13(B) and 24:177(E)]

HB 5 Original

2024 First Extraordinary Session

Marcelle

Abstract: Provides for the redistricting of the state's congressional districts and provides for the composition of each of the six congressional districts. Effective upon signature of governor for election purposes only for the regular congressional elections in 2024 and at noon on January 3, 2025, for all other purposes.

Statistical summaries of proposed law, including district variances from the ideal population of 776,292 and the range of those variances, as well as maps illustrating proposed district boundaries accompany this digest. (*Attached to the bill version on the internet.*)

Present U.S. Constitution (14th Amendment) provides that representatives in congress shall be apportioned among the several states according to their respective numbers, counting the whole number of persons in each state. The U.S. Supreme Court has held that the population of congressional districts in the same state must be as nearly equal in population as practicable.

Present law provides for six congressional districts based upon the 2020 federal decennial census.

Proposed law redraws district boundaries for the congressional districts based upon the 2020 federal decennial census.

Proposed law provides that the new districts become effective upon signature of governor or lapse of time for gubernatorial action for election purposes only for the regular congressional elections in 2024. Retains present law districts based upon the 2020 census until noon on January 3, 2025, at which time present law is repealed and the new districts based upon the 2020 census, as established by proposed law, become effective for all other purposes.

Proposed law specifies that precincts referenced in district descriptions are those precincts identified as Voting Districts (VTDs) contained in the file named "2024 Precinct Shapefiles (1-10-2024)" available on the La. legislature's website. Specifies that the 2024 Precinct Shapefiles are based upon those Voting Districts (VTDs) contained in the 2020 Census Redistricting TIGER/Line Shapefiles for the State of Louisiana as those files have been modified and validated through the data verification program of the La. legislature. Also specifies that if any such precinct has been subdivided by action of the parish governing authority on a nongeographic basis or subdivided by action of the parish governing authority on a geographic basis in accordance with present law, the enumeration of the general precinct designation shall include all nongeographic and all geographic subdivisions thereof. Further provides that the territorial limits of the districts as enacted shall continue in effect until changed by law regardless of any subsequent change made to the precincts by the parish governing authority.

Proposed law specifies that proposed law does not reduce the term of office of any person holding any position or office on the effective date of proposed law for which the appointment or election is based upon a congressional district as composed pursuant to present law. Specifies that any position or office filled after Jan. 1, 2025, for which the appointment or election is based upon a congressional district shall be appointed or elected from a district as it is described in proposed law.

Population data in the summaries accompanying this digest are derived from 2020 Census Redistricting Data (Public Law 94-171), Summary File for Louisiana. Population data, statistical information, and maps are supplied for purposes of information and analysis and comprise no part of proposed law.

Effective upon signature of governor or lapse of time for gubernatorial action for election purposes only for the regular congressional elections in 2024; effective for all other purposes at noon on January 3, 2025.

(Adds R.S. 18:1276.1; Repeals R.S. 18:1276)

Plan Statistics

Plan: HLS 24 1 E.S.-26 (Marcelle)

<u>Districts:</u>	<u># of Members</u>	<u>Actual Population</u>	<u>Ideal Population</u>	<u>Absolute Deviation</u>	<u>Relative Deviation</u>
District 1	1	776,316	776,292	24	0.003%
District 2	1	776,287	776,292	-5	-0.001%
District 3	1	776,249	776,292	-43	-0.006%
District 4	1	776,310	776,292	18	0.002%
District 5	1	776,309	776,292	17	0.002%
District 6	1	776,286	776,292	-6	-0.001%
Grand Total:	6	4,657,757	4,657,752		

Ideal Population Per Member:	776292		
Number of Districts for Plan Type:	6		
Range of District Populations:	776,249	to	776,316
Absolute Mean Deviation:	11		
Absolute Range:	-43	to	24
Absolute Overall Range:	67		
Relative Mean Deviation:	0.00%		
Relative Range:	-0.01%	to	0.00%
Relative Overall Range:	0.01%		

<i>Ideal - Actual:</i>	-5
<i>Remainder:</i>	5
<i>Unassigned Population:</i>	0

Total Population

Plan: HLS 24 1 E.S.-26 (Marcelle)

	Total Population	Total White	Total Black	Total Asian	Total American Indian	Total Other	Total Hispanic	VAP Total	VAP White	VAP Black	VAP Asian	VAP American Indian	VAP Other	VAP Hispanic Total
District 1	776,316	507,998	144,750	24,327	24,531	74,710	93,828	604,976	413,014	103,198	18,110	17,265	53,389	66,217
	100.000%	65.437%	18.646%	3.134%	3.160%	9.624%	12.086%	100.000%	68.269%	17.058%	2.994%	2.854%	8.825%	10.945%
District 2	776,287	275,643	415,880	24,040	9,014	51,710	66,679	598,879	228,637	307,807	18,976	6,933	36,526	46,130
	100.000%	35.508%	53.573%	3.097%	1.161%	6.661%	8.589%	100.000%	38.177%	51.397%	3.169%	1.158%	6.099%	7.703%
District 3	776,249	555,655	154,675	17,548	13,872	34,499	42,419	586,407	432,072	107,317	12,674	10,207	24,137	29,092
	100.000%	71.582%	19.926%	2.261%	1.787%	4.444%	5.465%	100.000%	73.681%	18.301%	2.161%	1.741%	4.116%	4.961%
District 4	776,310	455,308	262,042	12,026	18,028	28,906	34,609	596,380	362,830	190,355	8,867	13,745	20,583	24,005
	100.000%	58.650%	33.755%	1.549%	2.322%	3.724%	4.458%	100.000%	60.839%	31.918%	1.487%	2.305%	3.451%	4.025%
District 5	776,309	310,229	424,358	9,644	7,847	24,231	28,750	590,024	252,234	306,972	7,377	5,838	17,603	20,367
	100.000%	39.962%	54.664%	1.242%	1.011%	3.121%	3.703%	100.000%	42.750%	52.027%	1.250%	0.989%	2.983%	3.452%
District 6	776,286	552,819	141,414	19,703	13,768	48,582	56,264	593,882	435,724	100,120	14,412	10,252	33,374	37,851
	100.000%	71.213%	18.217%	2.538%	1.774%	6.258%	7.248%	100.000%	73.369%	16.859%	2.427%	1.726%	5.620%	6.373%
Grand Total	4,657,757	2,657,652	1,543,119	107,288	87,060	262,638	322,549	3,570,548	2,124,511	1,115,769	80,416	64,240	185,612	223,662
	100.000%	57.059%	33.130%	2.303%	1.869%	5.639%	6.925%	100.000%	59.501%	31.249%	2.252%	1.799%	5.198%	6.264%

Voter Registration

Plan: HLS 24 1 E.S.-26 (Marcelle)

	Reg Total Dec 2023	Reg White Dec 2023	Reg Black Dec 2023	Reg Other Dec 2023	Reg Dem Total Dec 2023	Reg Rep Total Dec 2023	Reg Other Total Dec 2023
District 1	457,120	343,796	70,257	43,067	143,303	173,425	140,392
	75.560%	75.209%	15.369%	9.421%	31.349%	37.939%	30.712%
District 2	473,883	185,949	250,792	37,142	268,004	84,364	121,515
	79.128%	39.239%	52.923%	7.838%	56.555%	17.803%	25.642%
District 3	445,031	352,141	72,719	20,171	128,776	193,532	122,723
	75.891%	79.127%	16.340%	4.532%	28.936%	43.487%	27.576%
District 4	442,996	290,311	134,060	18,625	153,079	177,962	111,955
	74.281%	65.534%	30.262%	4.204%	34.555%	40.172%	25.272%
District 5	465,296	201,079	248,836	15,381	243,650	111,458	110,188
	78.861%	43.215%	53.479%	3.306%	52.365%	23.954%	23.681%
District 6	457,961	367,170	65,165	25,626	115,694	210,885	131,382
	77.113%	80.175%	14.229%	5.596%	25.263%	46.049%	28.688%
Grand Total	2,742,287	1,740,446	841,829	160,012	1,052,506	951,626	738,155

Splits

Plan: HLS 24 1 E.S.-26 (Marcelle)

	Total Population	Total White	Total Black	Total Asian	Total American Indian	Total Other	VAP Total	VAP White	VAP Black	VAP Asian	VAP American Indian	VAP Other	Reg Total Dec 2023	Reg White Dec 2023	Reg Black Dec 2023	Reg Other Dec 2023
District 1																
*Jefferson	236,631	152,726	30,203	11,591	4,247	37,864	189,536	127,909	22,100	8,749	3,210	27,568	141,430	110,356	11,873	19,201
Lafourche	97,557	71,710	15,855	1,025	4,224	4,743	74,619	56,838	11,077	738	2,777	3,189	54,238	45,481	6,277	2,480
*Orleans	87,257	62,884	12,857	3,297	1,129	7,090	72,861	53,123	10,767	2,605	913	5,453	56,060	42,517	7,517	6,026
Plaquemines	23,515	14,287	5,428	1,317	697	1,786	17,334	10,856	3,857	925	500	1,196	13,143	8,996	2,934	1,213
St. Bernard	43,764	24,497	12,309	1,381	947	4,630	31,775	18,992	7,944	982	688	3,169	25,685	18,044	5,593	2,048
St. Mary	49,406	26,949	15,991	835	1,670	3,961	37,521	21,594	11,520	593	1,173	2,641	29,204	17,999	9,570	1,635
*St. Tammany	128,606	85,011	28,960	3,138	2,980	8,517	98,825	68,071	20,137	2,279	2,254	6,084	81,550	58,802	16,583	6,165
Terrebonne	109,580	69,934	23,147	1,743	8,637	6,119	82,505	55,631	15,796	1,239	5,750	4,089	55,810	41,601	9,910	4,299
District 1	776,316	507,998	144,750	24,327	24,531	74,710	604,976	413,014	103,198	18,110	17,265	53,389	457,120	343,796	70,257	43,067
	100.000%	65.437%	18.646%	3.134%	3.160%	9.624%	100.000%	68.269%	17.058%	2.994%	2.854%	8.825%	75.560%	75.209%	15.369%	9.421%
District 2																
*Ascension	24,459	8,224	14,701	190	196	1,148	18,078	6,675	10,347	141	136	779	16,126	6,268	9,237	621
Assumption	21,039	13,722	6,220	96	258	743	16,616	11,145	4,707	57	197	510	13,323	8,977	4,131	215
*Iberia	32,673	16,418	14,296	663	299	997	24,693	13,063	10,228	481	225	696	20,601	11,346	8,539	716
Iberville	30,241	14,833	13,730	202	274	1,202	24,086	12,462	10,232	149	221	1,022	19,906	9,999	9,484	423
*Jefferson	204,150	68,209	96,014	11,433	3,439	25,055	155,118	56,226	70,075	8,943	2,625	17,249	112,003	42,580	54,329	15,094
*Orleans	296,740	63,578	206,112	9,559	2,537	14,954	233,335	57,129	155,301	7,915	2,035	10,955	182,330	43,608	123,073	15,649
St. Charles	52,549	33,550	13,928	837	925	3,309	39,541	26,154	9,890	529	667	2,301	33,582	23,411	8,270	1,901
St. James	20,192	9,973	9,762	60	82	315	15,505	7,883	7,297	31	64	230	14,531	7,116	7,196	219
St. John the Baptist	42,477	13,877	25,196	403	465	2,536	32,503	11,622	18,437	323	350	1,771	27,484	9,338	16,653	1,493
St. Martin	51,767	33,259	15,921	597	539	1,451	39,404	26,278	11,293	407	413	1,013	33,997	23,306	9,880	811
District 2	776,287	275,643	415,880	24,040	9,014	51,710	598,879	228,637	307,807	18,976	6,933	36,526	473,883	185,949	250,792	37,142
	100.000%	35.508%	53.573%	3.097%	1.161%	6.661%	100.000%	38.177%	51.397%	3.169%	1.158%	6.099%	79.128%	39.239%	52.923%	7.838%
District 3																
Acadia	57,576	44,480	10,864	238	573	1,421	42,943	34,071	7,383	173	400	916	36,151	29,438	5,995	718
Allen	22,750	16,327	4,490	246	947	740	17,510	12,751	3,275	182	646	656	11,079	8,704	1,920	455
Beauregard	36,549	29,529	4,649	402	1,052	917	27,489	22,304	3,495	269	773	648	22,071	18,639	2,264	1,168
Calcasieu	216,785	139,772	59,386	4,702	3,536	9,389	163,166	108,789	41,898	3,359	2,604	6,516	111,819	80,364	26,493	4,962
Cameron	5,617	5,232	125	30	75	155	4,358	4,100	79	23	47	109	4,072	3,936	61	75
Evangeline	32,350	21,354	9,235	241	280	1,240	24,408	16,460	6,483	187	217	1,061	20,388	14,274	5,744	370
*Iberia	37,256	22,788	10,260	1,460	495	2,253	28,098	18,232	6,841	1,081	356	1,588	21,587	15,502	4,902	1,183
Jefferson Davis	32,250	25,066	5,837	183	472	692	24,039	19,121	4,006	111	325	476	18,733	15,509	2,784	440
*Lafayette	175,072	128,510	27,553	5,901	2,609	10,499	133,786	101,351	18,873	4,278	1,988	7,296	108,657	89,514	12,618	6,525
*Rapides	69,584	54,292	8,596	1,655	2,166	2,875	53,146	42,439	5,966	1,201	1,634	1,906	41,989	35,665	4,304	2,020
Vermilion	57,359	44,477	8,810	1,447	623	2,002	43,012	34,363	5,787	1,037	488	1,337	35,511	29,693	4,555	1,263

Splits

Plan: HLS 24 1 E.S.-26 (Marcelle)

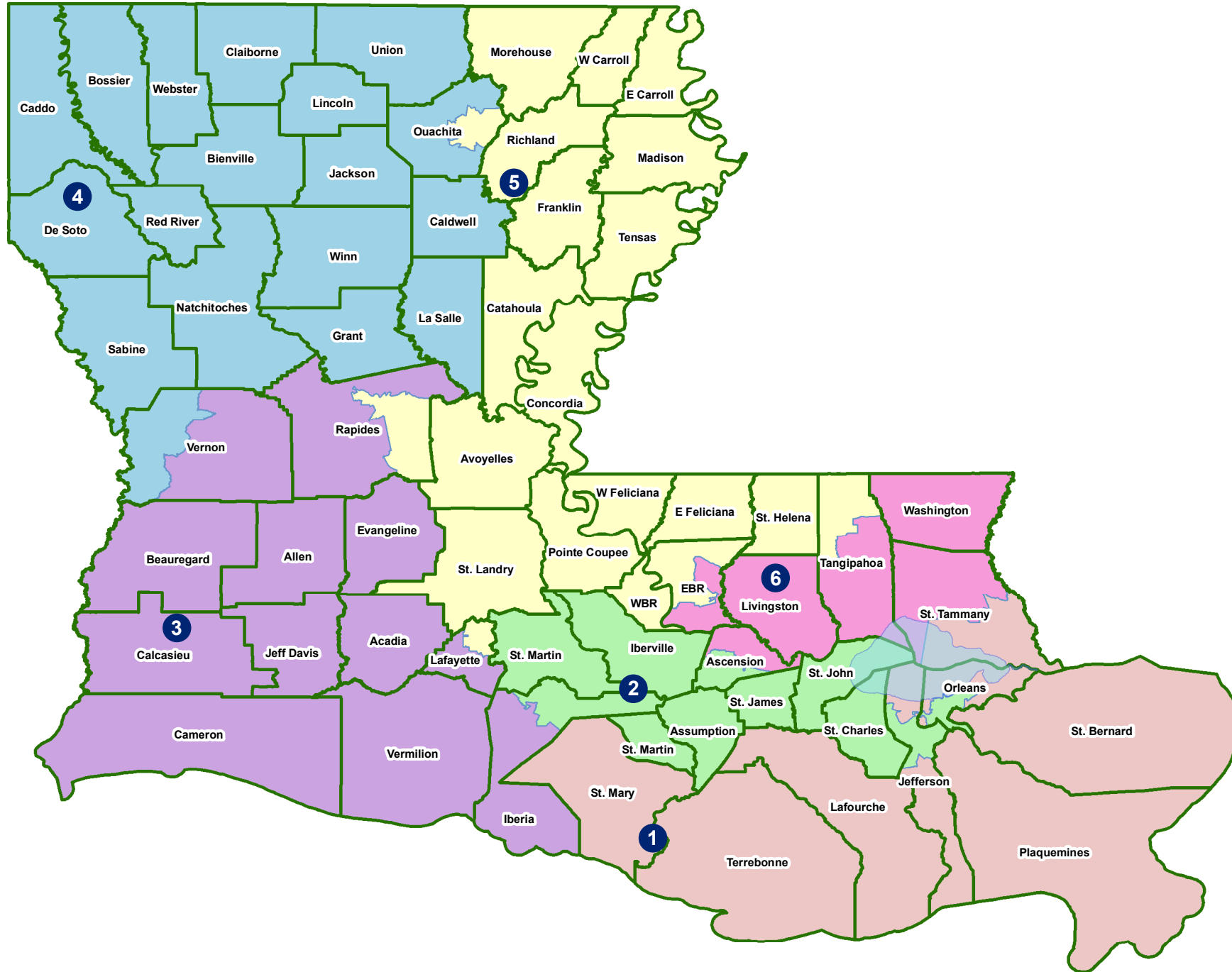
	Total Population	Total White	Total Black	Total Asian	Total American Indian	Total Other	VAP Total	VAP White	VAP Black	VAP Asian	VAP American Indian	VAP Other	Reg Total Dec 2023	Reg White Dec 2023	Reg Black Dec 2023	Reg Other Dec 2023
District 3																
*Vernon	33,101	23,828	4,870	1,043	1,044	2,316	24,452	18,091	3,231	773	729	1,628	12,974	10,903	1,079	992
District 3	776,249	555,655	154,675	17,548	13,872	34,499	586,407	432,072	107,317	12,674	10,207	24,137	445,031	352,141	72,719	20,171
	100.000%	71.582%	19.926%	2.261%	1.787%	4.444%	100.000%	73.681%	18.301%	2.161%	1.741%	4.116%	75.891%	79.127%	16.340%	4.532%
District 4																
Bienville	12,981	6,950	5,600	57	207	167	10,073	5,486	4,284	30	162	111	8,336	4,509	3,728	99
Bossier	128,746	81,052	32,551	3,492	3,273	8,378	95,876	62,931	22,440	2,448	2,477	5,580	65,726	48,229	13,555	3,942
Caddo	237,848	103,457	119,304	4,034	3,840	7,213	182,407	85,059	86,359	3,008	2,958	5,023	131,942	64,381	61,471	6,090
Caldwell	9,645	7,646	1,632	51	150	166	7,478	5,969	1,224	46	116	123	5,813	4,959	762	92
Claiborne	14,170	7,263	6,360	88	185	274	11,507	6,258	4,824	55	140	230	8,390	4,557	3,677	156
De Soto	26,812	15,284	9,973	117	740	698	20,440	11,909	7,425	86	557	463	17,887	11,005	6,317	565
Grant	22,169	17,709	3,335	133	644	348	17,527	13,964	2,717	97	507	242	12,226	10,764	1,120	342
Jackson	15,031	9,967	4,166	175	255	468	11,783	7,967	3,125	140	174	377	9,375	6,570	2,610	195
La Salle	14,791	11,348	1,422	283	372	1,366	11,563	8,636	1,065	264	271	1,327	8,380	7,633	583	164
Lincoln	48,396	26,034	19,364	892	662	1,444	38,655	21,306	15,119	744	526	960	24,408	15,139	8,357	912
Natchitoches	37,515	19,361	15,725	255	861	1,313	29,349	16,010	11,415	198	683	1,043	20,675	11,761	8,016	898
*Ouachita	90,953	72,958	11,272	1,451	2,101	3,171	68,844	56,386	7,617	1,018	1,638	2,185	57,035	49,426	5,606	2,003
Red River	7,620	4,195	3,106	25	171	123	5,714	3,338	2,164	3	116	93	5,475	3,034	2,358	83
Sabine	22,155	15,036	3,861	94	2,723	441	17,064	12,054	2,655	66	1,970	319	13,570	10,287	1,912	1,371
Union	21,107	14,460	5,224	62	338	1,023	16,632	11,807	3,861	39	254	671	14,802	10,847	3,497	458
*Vernon	15,649	11,259	2,741	399	556	694	11,809	8,674	1,902	301	431	501	9,435	7,226	1,529	680
Webster	36,967	22,735	12,679	208	687	658	28,753	18,144	9,464	154	558	433	21,259	14,068	6,744	447
Winn	13,755	8,594	3,727	210	263	961	10,906	6,932	2,695	170	207	902	8,262	5,916	2,218	128
District 4	776,310	455,308	262,042	12,026	18,028	28,906	596,380	362,830	190,355	8,867	13,745	20,583	442,996	290,311	134,060	18,625
	100.000%	58.650%	33.755%	1.549%	2.322%	3.724%	100.000%	60.839%	31.918%	1.487%	2.305%	3.451%	74.281%	65.534%	30.262%	4.204%
District 5																
Avoyelles	39,693	25,625	11,678	434	767	1,189	30,578	20,269	8,311	379	570	1,049	21,438	15,242	5,622	574
Catahoula	8,906	5,776	2,395	46	119	570	6,951	4,557	1,736	33	87	538	6,113	4,363	1,695	55
Concordia	18,687	10,275	7,725	122	233	332	14,217	8,108	5,613	100	167	229	11,419	6,816	4,418	185
*East Baton Rouge	216,003	45,353	155,329	4,729	1,519	9,073	162,926	38,040	113,697	3,603	1,200	6,386	127,317	29,588	91,583	6,146
East Carroll	7,459	2,054	5,272	29	43	61	5,901	1,773	4,043	19	27	39	4,564	1,218	3,305	41
East Feliciana	19,539	11,516	7,341	91	262	329	16,183	9,740	5,918	61	198	266	13,327	7,805	5,075	447
Franklin	19,774	12,492	6,802	70	205	205	15,028	9,901	4,779	44	153	151	12,350	8,524	3,718	108
*Lafayette	66,681	24,853	37,583	553	601	3,091	50,089	20,257	27,044	386	399	2,003	40,152	16,284	22,127	1,741
Madison	10,017	3,475	6,363	20	59	100	7,435	2,906	4,391	9	48	81	7,068	2,439	4,518	111
Morehouse	25,629	12,281	12,484	160	370	334	20,062	10,095	9,300	117	279	271	15,440	7,806	7,377	257

Splits

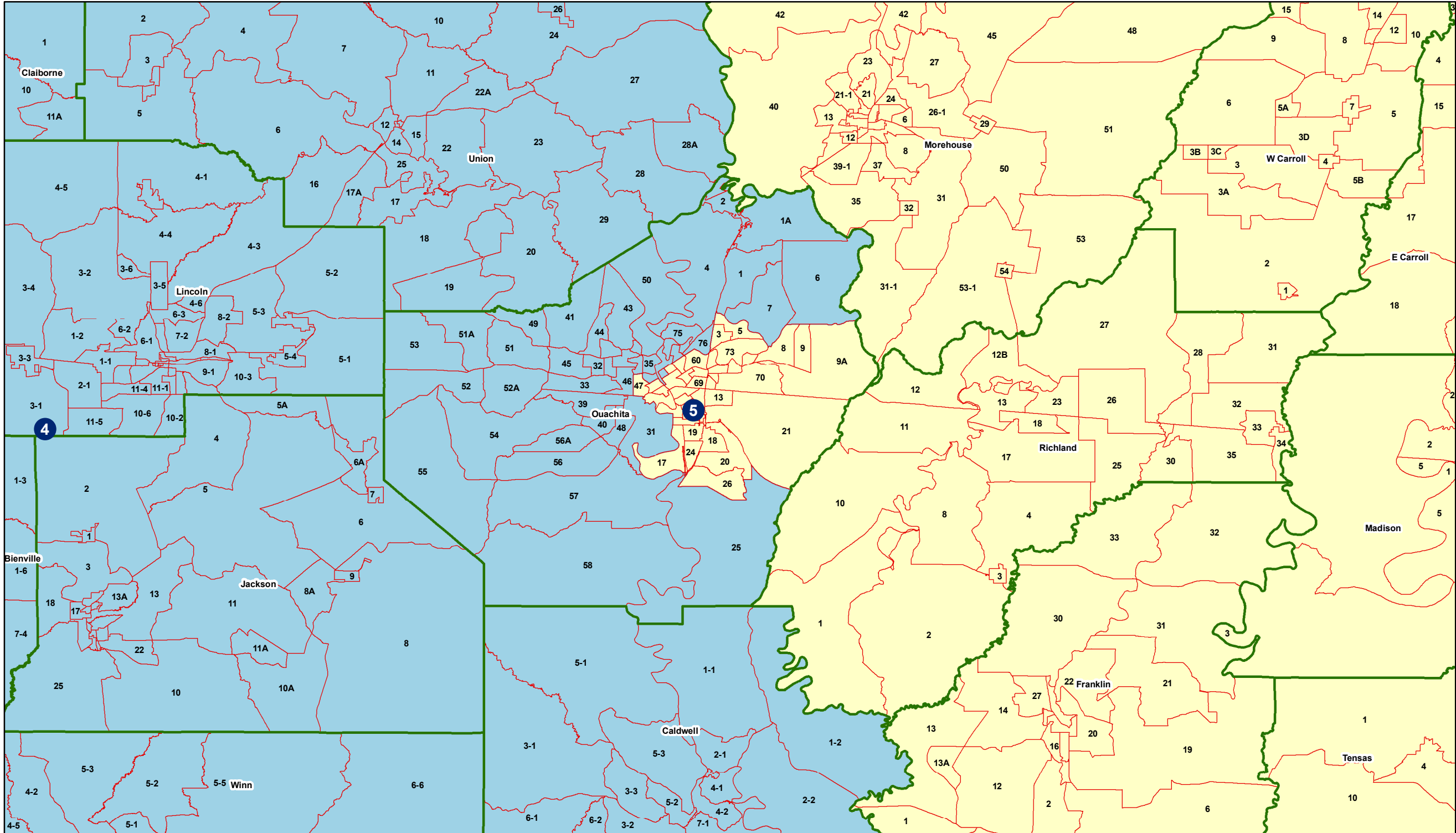
Plan: HLS 24 1 E.S.-26 (Marcelle)

	Total Population	Total White	Total Black	Total Asian	Total American Indian	Total Other	VAP Total	VAP White	VAP Black	VAP Asian	VAP American Indian	VAP Other	Reg Total Dec 2023	Reg White Dec 2023	Reg Black Dec 2023	Reg Other Dec 2023
District 5																
*Ouachita	69,415	15,587	49,945	1,337	560	1,986	51,356	13,588	34,673	1,100	421	1,574	38,595	8,723	28,415	1,457
Pointe Coupee	20,758	12,395	7,504	107	159	593	16,250	10,108	5,502	91	119	430	14,107	9,040	4,837	230
*Rapides	60,439	23,218	33,996	773	936	1,516	45,646	18,934	24,239	585	700	1,188	33,297	14,291	17,655	1,351
Richland	20,043	11,785	7,603	83	258	314	15,383	9,338	5,546	66	203	230	13,141	8,144	4,753	244
St. Helena	10,920	4,527	6,031	39	134	189	8,463	3,805	4,371	28	109	150	8,260	3,626	4,492	142
St. Landry	82,540	43,611	35,836	499	636	1,958	61,811	34,209	25,497	353	451	1,301	52,429	28,933	22,135	1,361
*Tangipahoa	23,399	10,578	11,824	126	229	642	17,669	8,508	8,474	106	155	426	11,678	6,151	5,237	290
Tensas	4,147	1,744	2,312	23	26	42	3,235	1,446	1,728	12	23	26	3,485	1,510	1,937	38
West Baton Rouge	27,199	14,307	11,170	287	326	1,109	20,526	11,146	8,149	209	219	803	16,753	9,620	6,764	369
West Carroll	9,751	7,894	1,425	27	180	225	7,532	6,223	1,010	20	136	143	6,871	5,770	1,013	88
West Feliciana	15,310	10,883	3,740	89	225	373	12,783	9,283	2,951	56	174	319	7,492	5,186	2,160	146
District 5	776,309	310,229	424,358	9,644	7,847	24,231	590,024	252,234	306,972	7,377	5,838	17,603	465,296	201,079	248,836	15,381
	100.000%	39.962%	54.664%	1.242%	1.011%	3.121%	100.000%	42.750%	52.027%	1.250%	0.989%	2.983%	78.861%	43.215%	53.479%	3.306%
District 6																
*Ascension	102,041	72,917	17,515	2,110	1,808	7,691	73,879	54,461	11,792	1,373	1,254	4,999	62,520	49,274	9,591	3,655
*East Baton Rouge	240,778	150,716	58,069	11,696	3,208	17,089	192,686	125,841	43,093	8,996	2,547	12,209	141,520	103,157	27,919	10,444
Livingston	142,282	116,855	12,658	1,697	3,111	7,961	105,141	88,432	8,136	1,099	2,311	5,163	82,405	73,655	5,642	3,108
*St. Tammany	135,964	111,630	9,683	2,636	2,680	9,335	103,403	86,550	6,624	1,796	1,907	6,526	92,757	82,460	4,546	5,751
*Tangipahoa	109,758	70,758	30,055	1,348	2,225	5,372	83,822	56,697	20,743	994	1,672	3,716	51,608	40,021	9,575	2,012
Washington	45,463	29,943	13,434	216	736	1,134	34,951	23,743	9,732	154	561	761	27,151	18,603	7,892	656
District 6	776,286	552,819	141,414	19,703	13,768	48,582	593,882	435,724	100,120	14,412	10,252	33,374	457,961	367,170	65,165	25,626
	100.000%	71.213%	18.217%	2.538%	1.774%	6.258%	100.000%	73.369%	16.859%	2.427%	1.726%	5.620%	77.113%	80.175%	14.229%	5.596%

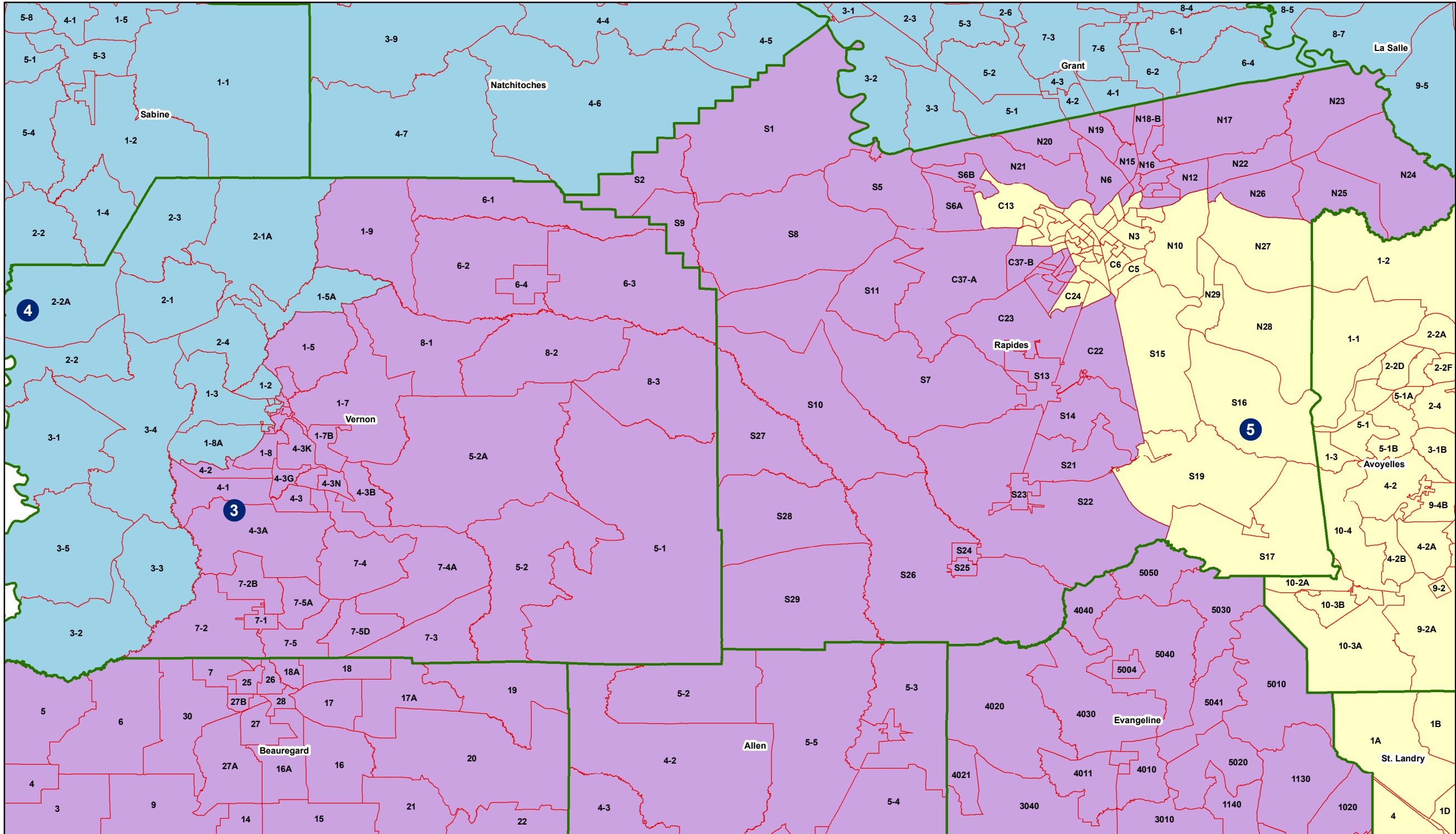
Congress - Statewide



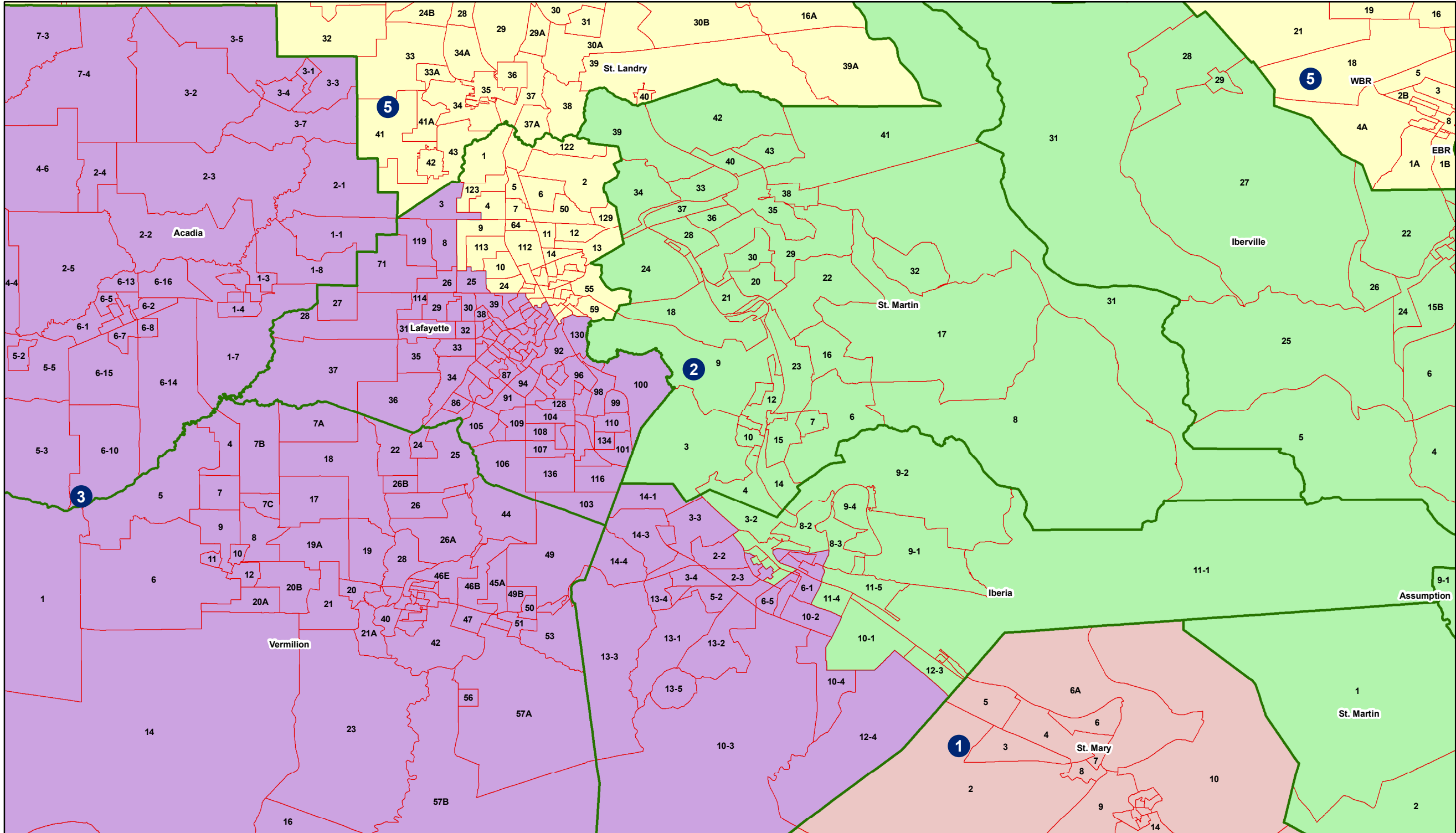
Congress - Ouachita



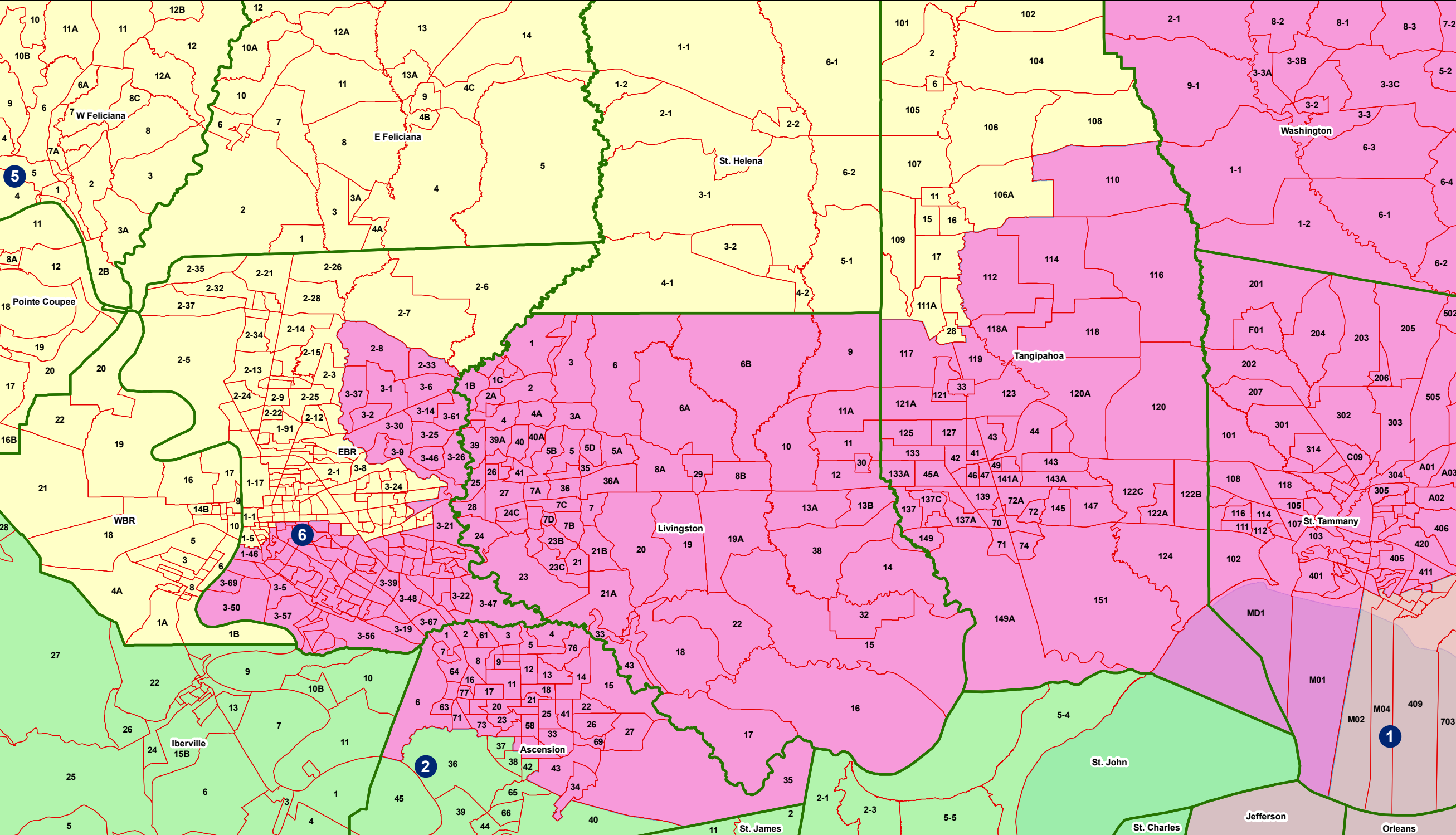
Congress - Central Louisiana



Congress - Acadiana



Congress - EBR Metro



Congress - Orleans Metro

