

2024 Regular Session

HOUSE BILL NO. 912

BY REPRESENTATIVE JORDAN

REAPPORTIONMENT/SENATE: Provides for redistricting the Louisiana Senate

1 AN ACT

2 To enact R.S. 24:35 and to repeal R.S. 24:35.1, relative to legislative redistricting; to provide
3 for the election districts for the Senate of the Legislature of Louisiana; to provide for
4 effective dates; and to provide for related matters.

5 Be it enacted by the Legislature of Louisiana:

6 Section 1. R.S. 24:35 is hereby enacted to read as follows:

7 §35.1. Membership of the Senate

8 The Senate of the Legislature of Louisiana shall be composed of thirty-nine
9 members. The state shall be divided into the following senatorial districts and one
10 senator shall be chosen from each of the districts:

11 (1) District 1 is composed of Precincts 9-45 and 9-45A of Orleans Parish;
12 Precincts 44, 50, 51, 52, 53, 54, and 55 of St. Bernard Parish; and Precincts 601, 602,
13 603, 604, 605, 606, 609, 705, 706, 801, 802, 803, 804, 805, 806, 807, 808, 809, 810,
14 811, 812, 813, 814, 815, 816, 817, 818, 901, 902, 903, 904, 905, 906, 907, 909, 910,
15 911, 912, 913, 914, 915, 916, 917, 918, 921, 922, A01, A02, A03, A04, P01, S01,
16 S02, S03, S04, S05, S06, S07, S08, S09, S10, S11, S13, S15, S16, S17, S18, S19,
17 S20, S21, S22, S23, S24, and S25 of St. Tammany Parish.

18 (2) District 2 is composed of Precincts 28, 30, 31, 36, 37, 39, 44, 45, 47, 48,
19 50, 51, 52, 53, 54, 55, 57, and 65 of Ascension Parish; Precincts 1-1, 1-2, 2-1, 2-2,
20 2-5, 4-1, 4-2, 4-3, 5-1, 5-2, 5-5, 6-1, 6-2, 6-3, and 7-1 of Assumption Parish;

1 Precincts 1, 3, 6, 7, 9, 10, 11, 12, 13, 13C, 14A, 15, 16, 19, 20, 21, and 23 of Iberville
2 Parish; Precincts 1-2, 1-4, 2-1, 2-1A, 2-3, 2-3A, 2-4, 2-5, 2-7, 2-9, 2-10, 2-11, 5-1,
3 5-1A, and 5-1B of Lafourche Parish; Precincts 1-1 of St. Charles Parish; Precincts
4 1, 2, 4, 5, 6, 7, 10, 11, 12, 13, 14, 15, 16, 17, 18, and 19 of St. James Parish; and
5 Precincts 1-1, 1-2, 1-3, 1-4, 1-5, 2-2, 3-2, 3-4, 4-1, 4-2, 4-3, 4-14, 5-1, 5-8, 6-1, 6-3,
6 6-4, 7-2, 7-3, 7-5, and 7-7 of St. John the Baptist Parish.

7 (3) District 3 is composed of Precincts 6-1, 6-2, 7-1, 7-4, 7-23, 7-24, 7-25,
8 7-25A, 7-26, 7-28A, 7-29, 7-30, 7-32, 7-33, 7-35, 7-37, 7-40, 8-1, 8-2, 8-4, 8-6, 8-7,
9 8-13, 8-14, 8-15, 8-19, 8-20, 8-21, 8-22, 8-23, 8-24, 8-25, 8-26, 8-27, 9-1, 9-3, 9-4,
10 9-5, 9-6, 9-7, 9-8, 9-9, 9-10, 9-11, 9-12, 9-13, 9-14, 9-15, 9-16, 9-17, 9-19, 9-28,
11 9-28C, 9-29, 9-30, 9-30A, 9-31, 9-31A, 9-31B, 9-31D (Part - Tract 001701 - Blocks
12 1002, 1003, 1004, 1005, 1006, 1007, 1008, 1013, 1014, 1015, 1016, 1017, 1018,
13 2015, 2016, 2017, 2018); 9-32, 9-39, 9-39B, 9-40, 9-40A, 9-40C, 9-41, 9-41A,
14 9-41B, 9-41C, 9-41D, 9-43M, 9-44, 9-44G, 9-44I, 9-44L, 9-44M, 9-44N, 9-44O,
15 9-44P, and 9-44Q of Orleans Parish; and Precincts 10, 11, 12, 13, 14, 15, 20, 21, 22,
16 23, 24, 25, 30, 31, 32, 33, 34, 40, 41, 42, 42A, 43, 45, and 46 of St. Bernard Parish.

17 (4) District 4 is composed of Precincts 3-9, 3-12, 3-14, 3-15, 3-19, 3-20, 4-2,
18 4-5, 4-6, 4-7, 4-8, 4-9, 4-11, 4-14, 4-15, 4-17, 4-17A, 4-18, 4-20, 4-21, 4-22, 4-23,
19 5-1, 5-2, 5-3, 5-5, 5-7, 5-8, 5-9, 5-10, 5-11, 5-12, 5-13, 5-15, 5-16, 5-17, 5-18, 6-4,
20 6-6, 6-7, 6-8, 6-9, 7-2, 7-5, 7-6, 7-7, 7-8, 7-9A, 7-10, 7-11, 7-12, 7-13, 7-14, 7-15,
21 7-16, 7-17, 7-18, 7-19, 7-20, 7-21, 7-27, 7-27B, 7-28, 7-37A, 7-41, 7-42, 8-8, 8-9,
22 8-12, 8-28, 8-30, 9-21, 9-23, 9-25, 9-26, 9-31D (Part - Tract 001701 - Blocks 1000,
23 1001, 2000, 2001, 2002, 2003, 2004, 2005, 2006, 2007, 2008, 2011, 2012, 2013,
24 2014, 2019, 2020, 2023, 2024, 2025, 2034), and 9-33, 9-34A, 9-35, 9-35A, 9-36,
25 9-36B, 9-37, 9-38, 9-38A, 9-42, 9-42C, 9-43A, 9-43B, 9-43C, 9-43E, 9-43F, 9-43G,
26 9-43H, 9-43I, 9-43J, 9-43K, 9-43L, 9-43N, 9-44A, 9-44B, 9-44D, 9-44E, 9-44F,
27 9-44J, 17-17, 17-18, 17-18A, 17-19, and 17-20 of Orleans Parish.

28 (5) District 5 is composed of Precincts 131, 133, 171, 173, 179B, 180, 181,
29 187, 188, 191, 195, 196, 197A, 197B, 200, 201, 205, 210, 212, 213A, and 216C of

1 Jefferson Parish; and Precincts 1-6, 2-2, 2-4, 2-6, 2-7, 3-1, 3-8, 3-18, 4-3, 10-7, 10-8,
2 10-9, 10-12, 10-13, 10-14, 11-4, 11-5, 11-8, 11-9, 11-10, 11-11, 11-12, 11-13, 11-14,
3 11-17, 12-5, 12-6, 12-7, 12-8, 12-9, 12-10, 12-11, 12-12, 12-13, 12-14, 12-16, 12-17,
4 12-19, 13-1, 13-2, 13-3, 13-4, 13-5, 13-6, 13-7, 13-8, 13-9, 13-10, 13-11, 13-12,
5 13-13, 13-14, 13-15, 13-16, 14-12, 14-13A, 14-17, 14-18A, 14-19, 14-20, 14-21,
6 14-23, 14-24A, 14-25, 14-26, 16-4, 16-5, 16-6, 16-7, 16-8, 16-9, 17-2, 17-3, 17-4,
7 17-5, 17-6, 17-7, 17-8, 17-9, 17-10, 17-11, 17-12, 17-13, 17-13A, 17-14, 17-15, and
8 17-16 of Orleans Parish.

9 (6) District 6 is composed of Precincts 2-6, 2-7, 2-8, 2-33, 3-1, 3-6, 3-9,
10 3-12, 3-14, 3-21, 3-25, 3-26, 3-37, 3-38, 3-46, 3-53, 3-61, and 3-71 of East Baton
11 Rouge Parish; Precincts 1, 1A, 1B, 1C, 1D, 2, 2A, 3, 3A, 3B, 4, 4A, 4B, 5, 5A, 5B,
12 5C, 6, 6A, 6B, 8A, 9, 10, 11, 11A, 25, 26, 26A, 26B, 26C, 29, 35, 35A, 36A, 39,
13 39A, 39B, 40, 40A, and 41 of Livingston Parish; and Precincts 33, 117, 121, and
14 121A of Tangipahoa Parish.

15 (7) District 7 is composed of Precincts 211, 213B, 213C, 214A, 214B, 215,
16 216A, 216B, 217, 225, 226, 227, 228, 231, 232A, 232B, 238A, 238B, 2-G, 4-G, 6-G,
17 7-G, 8-G, and 11-G of Jefferson Parish; Precincts 1-1, 1-2, 1-5, 2-1, 10-3, 10-6,
18 10-11, 11-2, 11-3, 12-1, 12-2, 12-3, 12-4, 15-1, 15-2, 15-3, 15-5, 15-6, 15-8, 15-9,
19 15-10, 15-11, 15-12, 15-12A, 15-13, 15-13A, 15-13B, 15-14, 15-14A, 15-14B,
20 15-14C, 15-14D, 15-14E, 15-14F, 15-14G, 15-15, 15-15A, 15-15B, 15-16, 15-17,
21 15-17A, 15-17B, 15-18, 15-18A, 15-18B, 15-18C, 15-18D, 15-18E, 15-18F, 15-19,
22 15-19A, 15-19B, and 15-19C of Orleans Parish; and Precincts 1-1, 1-2, 1-3, 7-1, and
23 7-2 of Plaquemines Parish.

24 (8) District 8 is composed of Precincts 152, 153, 154, 155, 156, 157A, 157B,
25 170, 172, 174, 175, 176, 177, 178, 179A, 182, 183, 184, 185A, 185B, 189, 190, 192,
26 193A, 193B, 194A, 194B, 198, 199, 202, 203, 204, 229, 230, 234, 235, 236, 237,
27 246, 247, 248, 1-G, 3-G, 5-G, 9-G, 10-G, 12-G, 13-G, 1-GI, 1-L, 1-W, 2-W, 3-W,
28 4-W, 5-W, 6-W, and 7-W of Jefferson Parish; Precincts 10-4, 10-5, and 10-6 of

1 Lafourche Parish; and Precincts 2-1, 3-1, 4-1, 5-1, 6-1, 6-2, 8-1, 8-2, 8-3, 9-1, and
2 9-2 of Plaquemines Parish.

3 (9) District 9 is composed of Precincts 12, 13, 14, 15, 16, 17, 18, 19, 20, 22,
4 23, 24, 25, 26, 27, 28, 29, 30, 31, 32, 33, 34, 35, 36, 37, 38, 39, 40, 41, 42, 43, 44, 45,
5 46, 60, 66, 69, 70, 71, 72, 73, 74, 75, 76, 77, 78, 79, 80, 81, 82, 83, 84, 85, 86, 87, 88,
6 89, 90, 91, 92, 93, 94, 95, 96, 97, 98, 99, 100, 101, 102, 103, 105, 106, 127, 128, 129,
7 130, 132, 134, 136, and 138 of Jefferson Parish; and Precincts 14-1, 14-2, 14-3, 14-4,
8 14-5, 14-6, 14-7, 14-8, 14-9, 14-10, 14-11, 14-14, 14-15, 14-16, 16-1, 16-1A, 16-2,
9 16-3, and 17-1 of Orleans Parish.

10 (10) District 10 is composed of Precincts 1, 2, 3, 4, 5, 7, 8, 9, 10, 11, 21, 51,
11 52, 53, 54, 55, 56, 57, 58, 59, 61, 62, 63, 64, 65, 67, 68, 108, 116, 117, 118, 119, 120,
12 121, 122, 123, 124, 125A, 125B, 126, 1-H, 2-H, 3-H, 4-H, 5-H, 6-H, 7-H, 8-H, 9-H,
13 1-K, 2-K, 3-K, 4-K, 5-K, 6-KA, 6-KB, 7-KA, 7-KB, 8-K, 9-K, 10-K, 11-K, 12-K,
14 13-KA, 14-K, 15-K, 16-K, 17-K, 18-K, 19-K, 20-K, 25-K, 27-K, 34-K, and 35-K of
15 Jefferson Parish.

16 (11) District 11 is composed of Precincts 102, 103, 104, 105, 106, 107, 110,
17 111, 112, 113, 114, 115, 116, 118, 301, 304, 305, 306, 307, 308, 309, 310, 312, 313,
18 314, 401, 402, 403, 404, 405, 406, 407, 408, 409, 410, 411, 412, 413, 414, 415, 416,
19 417, 418, 419, 420, 421, 422, 426, 427, 429, 430, 701, 702, 703, 704, C01, C02, C03,
20 C04, C05, C06, C07, C08, C09, C10, C11, M01, M02, M03, M04, M05, M06, M07,
21 M08, M09, M10, M11, M12, and MD1 of St. Tammany Parish.

22 (12) District 12 is composed of Precincts 101, 108, 201, 202, 203, 204, 205,
23 206, 207, 302, 303, 501, 502, 503, 504, 505, and F01 of St. Tammany Parish;
24 Precincts 1, 2, 6, 11, 15, 16, 17, 18, 26, 27, 28, 40A, 41, 43, 44, 48, 101, 102, 104,
25 104A, 105, 106, 106A, 107, 108, 109, 110, 111A, 112, 114, 115B, 116, 118, 119,
26 120, 120A, 123, 129, and 129A of Tangipahoa Parish; and Washington Parish.

27 (13) District 13 is composed of Precincts 7, 7A, 7B, 7C, 7D, 8B, 12, 13A,
28 13B, 19, 19A, 20, 21, 21A, 23, 23A, 23B, 23C, 24, 24B, 24C, 27, 28A, 28B, 30, 31,
29 36, and 38 of Livingston Parish; and Precincts 40, 42, 42A, 45, 45A, 46, 47, 49, 70,

1 70A, 71, 72, 72A, 73, 74, 120B, 122, 122A, 122B, 124, 124A, 125, 127, 127A, 133,
2 133A, 137, 137A, 137B, 137C, 137D, 139, 141, 141A, 143, 143A, 145, 147, 149,
3 149A, and 151 of Tangipahoa Parish.

4 (14) District 14 is composed of Precincts 1-1, 1-3, 1-4, 1-5, 1-6, 1-10, 1-13,
5 1-14, 1-15, 1-16, 1-17, 1-18, 1-19, 1-21, 1-22, 1-23, 1-24, 1-25, 1-26, 1-27, 1-28,
6 1-29, 1-30, 1-31, 1-32, 1-33, 1-35, 1-36, 1-37, 1-38, 1-39, 1-45, 1-46, 1-50, 1-51,
7 1-57, 1-58, 1-59, 1-61, 1-62, 1-63, 1-64, 1-65, 1-67, 1-68, 1-73, 1-76, 1-102, 1-107,
8 3-5, 3-20, 3-23, 3-44, 3-50, 3-55, 3-56, 3-57, 3-63, 3-65, 3-69, and 3-70 of East
9 Baton Rouge Parish.

10 (15) District 15 is composed of Precincts 1-2, 1-9, 1-11, 1-20, 1-52, 1-53,
11 1-54, 1-55, 1-60, 1-70, 1-71, 1-72, 1-77, 1-78, 1-81, 1-82, 1-83, 1-84, 1-85, 1-87,
12 1-88, 1-89, 1-90, 1-91, 1-93, 1-97, 1-98, 1-100, 1-103, 1-104, 2-1, 2-11, 2-16, 2-23,
13 2-27, 2-30, 3-2, 3-8, 3-10, 3-24, 3-27, 3-28, 3-30, 3-32, 3-54, 3-58, 3-59, and 3-72
14 of East Baton Rouge Parish.

15 (16) District 16 is composed of Precincts 1-7, 1-8, 1-12, 1-34, 1-40, 1-41,
16 1-42, 1-43, 1-44, 1-47, 1-48, 1-49, 1-56, 1-66, 1-69, 1-74, 1-75, 1-79, 1-80, 1-99,
17 1-105, 3-3, 3-4, 3-7, 3-11, 3-13, 3-15, 3-16, 3-17, 3-18, 3-19, 3-22, 3-29, 3-31, 3-33,
18 3-34, 3-35, 3-36, 3-39, 3-40, 3-41, 3-43, 3-45, 3-47, 3-48, 3-49, 3-51, 3-52, 3-60,
19 3-62, 3-64, 3-66, 3-67, and 3-68 of East Baton Rouge Parish.

20 (17) District 17 is composed of Precincts 1-86, 1-92, 1-94, 1-95, 1-101, 2-2,
21 2-3, 2-4, 2-5, 2-9, 2-10, 2-12, 2-13, 2-14, 2-15, 2-17, 2-18, 2-19, 2-20, 2-21, 2-22,
22 2-24, 2-25, 2-26, 2-28, 2-29, 2-31, 2-32, 2-34, 2-36, and 2-37 of East Baton Rouge
23 Parish; Precincts 22, 28, 29, 31, and 32 of Iberville Parish; Pointe Coupee Parish;
24 Precincts 2, 3, and 5 of St. Landry Parish; West Baton Rouge Parish; and Precincts
25 2, 4, and 9 of West Feliciana Parish.

26 (18) District 18 is composed of Precincts 1, 2, 3, 4, 5, 6, 7, 8, 9, 10, 11, 12,
27 13, 14, 15, 16, 17, 18, 20, 21, 22, 23, 24, 25, 26, 27, 32, 33, 34, 35, 40, 41, 42, 43, 58,
28 61, 62, 63, 64, 66, 71, 72, 73, 76, 77, and 78 of Ascension Parish; and Precincts 14,
29 15, 16, 17, 18, 18A, 22, 32, 33, 34, and 43 of Livingston Parish.

1 (19) District 19 is composed of Precincts 104, 115, 150, 151, 13-KB, 21-K,
2 22-K, 23-K, 24-K, 26-K, 28-K, 29-K, 30-K, 31-K, and 33-K of Jefferson Parish;
3 Precincts 2-2, 2-6, 2-8, 3-1, 3-2, 3-4, 3-5, 3-6, 5-2, 6-1, 6-2, 6-3, 6-4, 6-5, 7-1, 7-2,
4 7-3, 7-4, and 8-1 of Lafourche Parish; Precincts 1-2, 1-3, 1-5, 1-6, 2-1, 2-2, 2-3, 2-4,
5 2-5, 2-6, 3-1, 3-2, 3-3, 4-1, 4-2, 4-3, 4-4, 5-1, 5-3, 5-4, 5-5, 6-1, 6-2, 6-4, 6-6, 6-7,
6 6-8, 7-1, 7-2, 7-3, and 7-4 of St. Charles Parish; Precincts 3, 8, and 9 of St. James
7 Parish; and Precincts 2-1, 2-3, 2-4, 3-1, 4-13, 5-4, and 5-7 of St. John the Baptist
8 Parish.

9 (20) District 20 is composed of Precincts 2-12, 2-13, 2-14, 3-3, 4-1, 4-2, 4-3,
10 4-4, 4-5, 4-6, 9-1, 9-2, 10-1, 10-2, 10-3, 10-7, 10-8, 10-9, 10-10, 10-11, 10-12, 10-13,
11 10-14, 10-15, 10-16, 11-1, 11-2, 11-3, 11-4, and 11-5 of Lafourche Parish; and
12 Precincts 15, 16, 19, 20, 21, 23, 25, 27, 29, 31, 32, 34, 35, 36, 38, 41, 43, 45, 46, 48,
13 49, 52, 53, 54, 55, 56, 57, 58, 59, 60, 61, 63, 69, 71, 72, 73, 74, 83, 84, 85, 88, 89, 90,
14 110, and 111 of Terrebonne Parish.

15 (21) District 21 is composed of Precincts 2-3, 2-4, 3-1, 3-2, 5-3, 7-2, 7-3,
16 8-1, and 9-1 of Assumption Parish; Precincts 2-3, 5-4, 10-3, 10-7, 13-1, and 13-3 of
17 Iberia Parish; Precincts 1-1, 1-3, and 1-5 of Lafourche Parish; Precincts 1 and 2 of
18 St. Martin Parish; St. Mary Parish; and Precincts 1, 4, 5, 7, 8, 9, 10, 11, 12, 13, 14,
19 17, 18, 51, 64, 65, 67, 68, 76, 82, 86, and 87 of Terrebonne Parish.

20 (22) District 22 is composed of Precincts 1-1, 1-3, 2-1, 3-1, 3-2, 3-3, 4-1,
21 4-2, 4-3, 4-4, 6-1, 6-3, 6-5, 7-1, 7-2, 7-4, 7-5, 8-2, 8-3, 9-1, 9-2, 9-4, 9-5, 10-1, 10-2,
22 10-4, 11-2, 12-1, 12-3, 14-1, and 14-3 of Iberia Parish; Precincts 4, 5, 14, 15B, 17,
23 18, 24, 25, 26, and 27 of Iberville Parish; Precincts 99, 100, 101, 102, and 110 of
24 Lafayette Parish; and Precincts 3, 4, 5, 6, 7, 8, 9, 10, 11, 12, 13, 14, 15, 16, 19, 20,
25 21, 22, 24, 25, 27, 28, and 29 of St. Martin Parish.

26 (23) District 23 is composed of Precincts 34, 38, 39, 40, 41, 42, 43, 44, 45,
27 46, 47, 48, 49, 65, 66, 67, 69, 70, 72, 73, 74, 75, 76, 77, 78, 79, 80, 81, 82, 83, 84, 85,
28 86, 87, 88, 89, 90, 91, 92, 93, 94, 95, 96, 97, 98, 103, 104, 105, 106, 107, 108, 109,
29 111, 115, 116, 117, 118, 120, 121, 125, 126, 127, and 128 of Lafayette Parish.

1 (24) District 24 is composed of Precincts 1, 2, 4, 5, 6, 7, 8, 9, 10, 11, 12, 13,
 2 14, 15, 16, 17, 18, 19, 20, 21, 22, 23, 24, 51, 52, 53, 54, 55, 56, 57, 58, 59, 60, 61, 62,
 3 63, 64, 68, 112, 113, and 123 of Lafayette Parish; Precincts 6, 8, 9, 10, 11, 12, 18,
 4 19, 20, 21, 22, 23, 24, 25, 26, 27, 28, 32, 33, 34, 35, and 36 of St. Landry Parish; and
 5 Precincts 17, 18, and 23 of St. Martin Parish.

6 (25) District 25 is composed of Precincts 260, 261, 262, 324, 327, 328, 329,
 7 330, 332N, 332S, 333, 336, 337, 338, 339, 340, 362, 363, 364, 365, 366, 367, 368,
 8 369, 370, 371N, 371S, 372, 469, 800, 801, 860N, 860S, 861E, and 861W of
 9 Calcasieu Parish; Cameron Parish; and Jefferson Davis Parish.

10 (26) District 26 is composed of Precincts 1-2, 1-3, 1-4, 1-5, 1-6, 1-9, 5-1,
 11 5-2, 5-3, 5-4, 5-5, 6-1, 6-2, 6-3, 6-4, 6-5, 6-6, 6-7, 6-8, 6-10, 6-12, 6-13, 6-14, 6-15,
 12 and 6-16 of Acadia Parish; Precincts 3, 25, 26, 27, 28, 29, 30, 31, 32, 33, 35, 36, 37,
 13 71, 114, 119, and 124 of Lafayette Parish; Precincts 41, 42, and 43 of St. Landry
 14 Parish; and Vermilion Parish.

15 (27) District 27 is composed of Precincts 160E, 160W, 161, 162E, 162W,
 16 163, 164, 165, 166E, 166W, 167, 300, 301, 302, 303, 304, 305, 306, 307, 308, 309E,
 17 309W, 310, 311, 312, 313E, 313W, 314, 315E, 315W, 316E, 316W, 317, 318, 319N,
 18 319S, 320E, 320W, 321, 322, 323, 325, 326, 331, 334, 335, 360, 361, 400, 401, 402,
 19 403, 404, 405, 406, 407, 408, 440, 441, 460E, 461, 463, 464, 466E, 466W, 467, 468,
 20 and 664 of Calcasieu Parish.

21 (28) District 28 is composed of Precincts 1-1, 1-8, 2-1, 2-2, 2-3, 2-5, 3-1,
 22 3-2, 3-3, 3-4, 3-5, 3-7, 4-1, 4-2, 4-4, 4-5, 4-6, 7-2, 7-3, and 7-4 of Acadia Parish;
 23 Allen Parish; Evangeline Parish; Precinct 122 of Lafayette Parish; Precincts 1, 4, 7,
 24 7A, 13, 14, 15, 16, 17, 29, 30, 31, 37, 38, 39, 40, 44, 45, 46, 47, 48, 49, 50, 51, and
 25 52 of St. Landry Parish; and Precincts 26 of St. Martin Parish.

26 (29) District 29 is composed of Precincts 10-2 and 10-4 of Avoyelles Parish;
 27 Precincts 1-1, 1-2, 1-3, 2-5, 2-6, 7-3, and 7-4 of Bienville Parish; Precincts 1-1, 1-2,
 28 1-3, 2-1, 2-2, 3-1, 3-2, and 3-3 of Grant Parish; Precincts 16, 17, 17A, 18, 19A, 19AI,
 29 20, 20A, 25, 25A, and 25B of Jackson Parish; Precincts 1-1, 1-2, 1-3, 2-1, 2-2, 3-1,

1 3-3, 8-3, 8-4, 9-1, 9-2, 9-3, 9-4, 9-5, 10-1, 10-2, 10-4, 10-5, 11-1, 11-2, 11-3, 11-4,
 2 12-1, 12-2, 12-3, 12-4, 12-5, and 12-6 of Lincoln Parish; Precincts 1-1, 1-2, 1-3,
 3 1-3A, 1-4, 1-5, 1-5A, 1-8, 1-13, 1-14, 2-7, and 2-8 of Natchitoches Parish; Precincts
 4 C1, C2, C3, C4, C5, C6, C7, C8, C9, C10, C11-A, C11-B, C13, C14, C15, C17, C18,
 5 C19, C20, C21, C22, C24, C25, C26, C27, C28, C38-A, C38-B, C39, C40, N1, N2,
 6 N3, N4, N5, N6, N8, N9, N11, N21, S4, S6A, S6B, S14, S17, S18, S19, S20, and
 7 S21 of Rapides Parish; and Precincts 1-1, 1-3, 1-4, 1-5, 2-1, 2-2, 2-3, 3-1A, 3-1C,
 8 3-2A, 5-1, 5-2, 5-3, 6-1, 6-1A, 7-1, 7-1A, and 7-2A of Winn Parish.

9 (30) District 30 is composed of Beauregard Parish; Precincts 460W, 465,
 10 560, 561, 562, 600, 601, 602, 603, 660, 661, 662, 663, 700, 701, 702, 703, 760, 761,
 11 and 762 of Calcasieu Parish; Precincts S2, S9, S10, S22, S23, S24, S25, S26, S27,
 12 S28, and S29 of Rapides Parish; and Vernon Parish.

13 (31) District 31 is composed of Precincts 1-4, 2-1, 2-2, 2-3, 2-4, 3-1, 3-2,
 14 3-3, 3-4, 3-5, 3-6, 3-7, 4-1, 4-2, 4-4, 5-1, 5-2, 5-3, 5-4, 6-1, 6-2, 6-3, 6-4, 7-1, 7-2,
 15 and 7-5 of Bienville Parish; Precincts 1, 5, 7, 8, 10, 11, 21, 51, 81, 84, 85, 87, 88, 91,
 16 92, 93, and 96 of Claiborne Parish; Precincts 1, 2, 3, 4, 5, 5A, 6, 6A, 7, 8, 8A, 9, 10,
 17 10A, 11, 11A, 13, 13A, 15, and 22 of Jackson Parish; Precincts 3-2, 3-4, 3-5, 3-6,
 18 4-1, 4-2, 4-3, 4-4, 4-5, 4-6, 5-1, 5-2, 5-3, 5-4, 6-1, 6-2, 6-3, 7-1, 7-2, 8-1, 8-2, and
 19 10-3 of Lincoln Parish; Precincts 1-1A, 1-4A, 1-6, 1-7, 1-9, 1-9A, 1-10, 1-10A,
 20 1-10B, 1-11, 1-12, 2-1, 2-2, 2-3, 2-4, 2-5, 2-6, 2-7A, 2-9, 3-1, 3-2, 3-3, 3-4, 3-5, 3-6,
 21 3-7, 3-8, 3-9, 3-10, 4-1, 4-2, 4-3, 4-4, 4-5, 4-6, 4-7, 4-8, and 4-9 of Natchitoches
 22 Parish; Precincts C23, C30, C31, C32, C33, C34, C35, C36, C37-A, C37-B, C41,
 23 C42, S1, S5, S7, S8, S11, and S13 of Rapides Parish; Red River Parish; Precincts 1,
 24 2, 3, 4, and 5 of Union Parish; and Precincts 3-1B, 3-2, 3-3, 4-1, 4-2, 4-2A, 4-3, and
 25 4-5 of Winn Parish.

26 (32) District 32 is composed of Precincts 1-1, 1-2, 1-3, 2-1, 2-2, 2-2A, 2-2B,
 27 2-2C, 2-2D, 2-2F, 2-3A, 2-4, 2-4A, 2-5, 2-5E, 2-7, 2-8, 3-1, 3-1B, 3-3, 4-1, 4-2,
 28 4-2A, 5-1, 5-1A, 6-1A, 6-2, 6-2A, 7-1, 7-3, 7-3B, 8-1, 8-2A, 8-2B, 8-3, 8-3A, 9-1A,
 29 9-2, 9-2A, 9-3, 9-4, 9-4B, 9-5B, 10-2A, 10-3A, 11-1, and 11-2A of Avoyelles Parish;

1 Precincts 1-3, 1-4, 2-2, 3-1, 3-2, 3-3, 3-4, 4-1, 4-2, 5-1, 6-1, 6-2, 6-3, 6-5, 7-1, 7-3,
 2 7-5, 8-1, 9-1, 9-2, 9-3, and 9-4 of Catahoula Parish; Precincts 2-1, 3-1, 3-2, 3-3, 3-4,
 3 4-1, 4-2, 5-3, 5-4, 5-5, and 5-6 of Concordia Parish; Precinct 2-35 of East Baton
 4 Rouge Parish; East Feliciana Parish; Franklin Parish; Precincts 3 and 4 of Richland
 5 Parish; St. Helena Parish; and Precincts 1, 3, 5, 6, 7, 8, 10, 11, 12, and 13 of West
 6 Feliciana Parish.

7 (33) District 33 is composed of Precincts 23, 26-1, 27, 29, 32, 35, 37, 39-1,
 8 40, 42, 45, 47, 48, and 50 of Morehouse Parish; Precincts 1, 1A, 2, 4, 6, 7, 8, 9, 32,
 9 33, 35, 36, 37, 38, 39, 40, 41, 42, 43, 44, 44A, 45, 46, 49, 50, 51, 51A, 52, 52A, 53,
 10 54, 55, 56, 56A, and 76 of Ouachita Parish; Precincts 6, 7, 8, 9, 10, 11, 12, 13, 14,
 11 15, 16, 17, 17A, 18, 19, 20, 22, 23, 24, 26, 27, 28, and 29 of Union Parish; and West
 12 Carroll Parish.

13 (34) District 34 is composed of Precincts 1-1, 1-2, and 2-1 of Catahoula
 14 Parish; Precincts 1-1, 1-2, 1-3, 1-4, 4-3, 4-4, 5-1, 5-2, and 5-2B of Concordia Parish;
 15 East Carroll Parish; Madison Parish; Precincts 1, 3-1, 6, 7, 8, 12, 13, 14, 16, 20, 21,
 16 24, 31, 39-2, 53, and 54 of Morehouse Parish; Precincts 3, 5, 9A, 10, 11, 12, 13, 14,
 17 15, 16, 17, 18, 19, 20, 21, 22, 23, 24, 25, 26, 65, 65A, 66, 67, 68, 69, 70, 72, 73, 74,
 18 and 79 of Ouachita Parish; Precincts 2, 8, 10, 11, 12, 12A, 13, 17, 18, 23, 25, 26, 27,
 19 28, 30, 31, 32, 33, 34, and 35 of Richland Parish; and Tensas Parish.

20 (35) District 35 is composed of Caldwell Parish; Precincts 2-3, 2-5, 4-1, 4-2,
 21 4-3, 5-1, 5-2, 5-3, 6-1, 6-2, 6-3, 6-4, 7-1, 7-2, 7-3, 7-4, 8-1, 8-2, 8-3, and 8-4 of Grant
 22 Parish; La Salle Parish; Precincts 27, 27A, 28, 29, 30, 31, 34, 47, 48, 57, 58, 59, 60,
 23 61, 62, 63, 64, 71, 75, 77, and 78 of Ouachita Parish; Precincts N7, N10, N12,
 24 N13-A, N13-B, N14-A, N14-B, N15, N16, N17, N18-A, N18-B, N19, N20, N22,
 25 N23, N24, N25, N26, N27, N28, N29, S15, and S16 of Rapides Parish; Precinct 1 of
 26 Richland Parish; and Precincts 5-5, 6-3, 6-6, 7-2, and 7-7 of Winn Parish.

27 (36) District 36 is composed of Precincts 2-2, 2-4, 2-18B, 2-18C, 2-18E,
 28 2-18F, 2-18G, 2-21B, 2-21C, 2-21D, 2-22A, 2-22B, 2-22C, 3-2, 3-3, 4-1A, 4-2,
 29 4-3A, 4-3B, 4-3C, 4-3D, 4-4A, 4-4B, 4-5A, 4-6A, 4-6B, 4-7A, 4-7B, 4-8A, 4-8E,

1 4-9, 4-11A, 4-11B, and 4-11C of Bossier Parish; Precincts 104, 109, and 127 of
2 Caddo Parish; Precincts 3, 31, 34, 35, 36, 37, 41, and 42 of Claiborne Parish; and
3 Webster Parish.

4 (37) District 37 is composed of Precincts 1-1, 1-2, 2-3, 2-3A, 2-5A, 2-6, 2-7,
5 2-8, 2-9, 2-10, 2-11, 2-11A, 2-12A, 2-12B, 2-12C, 2-13, 2-14, 2-15, 2-16, 2-17A,
6 2-17B, 2-19, 2-20, 2-21A, 2-23, 4-8C, and 4-8D of Bossier Parish and Precincts 4,
7 5B, 6, 7, 8, 14, 15, 17, 23, 24, 25, 26, 27, 28, 29, 32, 34, 35, 36, 38, 39, 40, 41, 50,
8 51, 52, 53, 58, 59, 64, 68, 69, 70, 71, 72, 76, 78, 79, 80, 98, 99, 101, 111, 112, 113,
9 and 129 of Caddo Parish.

10 (38) District 38 is composed of Precincts 1-3, 1-3A, 1-3B, 1-4, 1-5, 4-8B,
11 4-8G, and 4-10 of Bossier Parish; Precincts 9, 10, 11, 12, 13, 16, 20, 21, 22, 48, 49,
12 56, 66, 75, 77, 97, 102, 105, 107, 108, 110, 115, 123, 125, 126, 128, 132, 133, 134,
13 136B, and 162 of Caddo Parish; De Soto Parish; and Sabine Parish.

14 (39) District 39 is composed of Precincts 2-1, 2-18D, 3-1, and 3-4 of Bossier
15 Parish and Precincts 1, 2, 3, 5A, 30, 31, 37, 43, 44, 45, 46, 47, 54, 55, 57, 60, 61, 62,
16 63, 65, 67, 73, 74, 81, 82, 83, 84, 85, 86, 87, 88, 89, 90, 91, 92, 93, 94, 95, 100, 103,
17 106, 114, 122, 135, 136A, 137, 138, 139, 140, 142, 143, 144, 145, 146, 149, 151,
18 154, 155, 156, 157, 158, 160, 161, 163, 165, and 166 of Caddo Parish.

19 Section 2. R.S. 24:35.1 is hereby repealed.

20 Section 3. (A) The precincts referenced in this Act are those precincts identified as
21 Voting Districts (VTDs) in the 2020 Census Redistricting TIGER/Line Shapefiles for the
22 State of Louisiana as validated through the data verification program of the Louisiana House
23 of Representatives and the Louisiana Senate and available on the legislature's website on the
24 effective date of this Section.

25 (B) When a precinct referenced in this Act has been subdivided by action of the
26 parish governing authority on a nongeographic basis or subdivided by action of the parish
27 governing authority on a geographic basis in accordance with the provisions of R.S.
28 18:532.1, the enumeration in this Act of the general precinct designation shall include all

1 nongeographic and all geographic subdivisions thereof, however such subdivisions may be
2 designated.

3 (C) The territorial limits of the districts as provided in this Act shall continue in
4 effect without change regardless of any changes made to the precincts by the parish
5 governing authority.

6 Section 4. The provisions of this Act shall not reduce the term of office of any
7 person holding any position or office on the effective date of this Section for which the
8 appointment or election is based upon a Senate district as composed pursuant to R.S.
9 24:35.1. Any position or office that is filled by appointment or election based upon a Senate
10 district and that is to be filled after January 10, 2028, shall be appointed or elected based
11 upon the district as it is described in Section 1 of this Act.

12 Section 5.(A) Solely for the purposes of qualifying for election and the conduct of
13 the election of members to the Louisiana Senate at the regularly scheduled election for
14 members of the Louisiana Senate in 2027, the provisions of Section 1 of this Act shall
15 become effective upon signature of this Act by the governor or, if not signed by the
16 governor, upon expiration of the time for bills to become law without signature by the
17 governor, as provided in Article III, Section 18 of the Constitution of Louisiana. If this Act
18 is vetoed by the governor and subsequently approved by the legislature, the provisions of
19 Section 1 of this Act shall become effective on the day following such approval for the
20 purposes established in this Subsection.

21 (B) For subsequent elections of members to the Louisiana Senate and for all other
22 purposes, the provisions of Section 1 of this Act shall become effective at 10:00 a.m. on
23 January 10, 2028.

24 (C) The provisions of Section 2 of this Act shall become effective at 10:00 a.m. on
25 January 10, 2028.

26 (D) The provisions of this Section and Sections 3 and 4 of this Act shall become
27 effective upon signature of this Act by the governor or, if not signed by the governor, upon
28 expiration of the time for bills to become law without signature by the governor, as provided
29 in Article III, Section 18 of the Constitution of Louisiana. If this Act is vetoed by the

- 1 governor and subsequently approved by the legislature, the provisions of this Section and
2 Sections 3 and 4 of this Act shall become effective on the day following such approval.

DIGEST

The digest printed below was prepared by House Legislative Services. It constitutes no part of the legislative instrument. The keyword, one-liner, abstract, and digest do not constitute part of the law or proof or indicia of legislative intent. [R.S. 1:13(B) and 24:177(E)]

HB 912 Original

2024 Regular Session

Jordan

Abstract: Provides for the redistricting of the La. Senate and provides for the composition of each of the 39 Senate districts. Effective upon signature of governor for election purposes for the regular elections in 2027, and at 10:00 a.m. on Jan. 10, 2028, for all other purposes.

Statistical summaries of proposed law, including district variances from the ideal population and the range of those variances, as well as maps illustrating proposed district boundaries accompany this digest. (*Attached to the bill version on the internet.*)

Present constitution (Const. Art. III, §6(A)) requires the legislature, by the end of the year following the year in which the state's population is reported to the president of the U.S. for each decennial federal census, to reapportion the representation in each house as equally as practicable on the basis of population shown by the census.

Present law provides boundaries for 39 House districts based upon the 2020 federal decennial census.

Proposed law redraws district boundaries for the 39 House districts based upon the 2020 federal decennial census.

Proposed law provides that the new districts become effective upon signature of the governor or lapse of time for gubernatorial action for election purposes only for the regular state legislative elections in 2027. Retains present law districts based upon the 2020 census until 10:00 am. on Jan. 10, 2028, at which time present law is repealed and the new districts based upon the 2020 census, as established by proposed law, become effective for all other purposes.

Proposed law specifies that precincts referenced in district descriptions are those identified as Voting Districts (VTDs) contained in the 2020 Census Redistricting TIGER/Line Shapefiles for the State of La. as those files have been modified and validated through the data verification program of the La. House of Representatives and the La. Senate.

Proposed law also specifies that if any such precinct has been subdivided by action of the parish governing authority on a nongeographic basis or subdivided by action of the parish governing authority on a geographic basis in accordance with present law, the enumeration of the general precinct designation shall include all nongeographic and all geographic subdivisions thereof. Further provides that the territorial limits of the districts as enacted shall continue in effect until changed by law regardless of any subsequent change made to the precincts by the parish governing authority.

Population data in the summaries accompanying this digest are derived from 2020 Census Redistricting Data (Public Law 94-171), Summary File for La. Population data, statistical information, and maps are supplied for purposes of information and analysis and comprise no part of proposed law.

Proposed law specifies that proposed law does not reduce the term of office of any person holding any position or office on the effective date of proposed law for which the appointment or election is based upon a La. Senate district as composed pursuant to present law. Specifies that any position or office filled after Jan. 10, 2028, for which the appointment or election is based upon a La. Senate district shall be appointed or elected based on the district as it is described in proposed law.

Population data in the summaries accompanying this digest are derived from 2020 Census Redistricting Data (Public Law 94-171), Summary File for Louisiana. Population data, statistical information, and maps are supplied for purposes of information and analysis and comprise no part of proposed law.

Effective upon signature of governor or lapse of time for gubernatorial action for election purposes only for the regular state legislative elections in 2027; effective for all other purposes at 10:00 a.m. on January 10, 2028.

(Adds R.S. 24:35; Repeals R.S. 24:35.1)

Plan Statistics

Plan: 24RS-2145 (Jordan)

<u>Districts:</u>	<u># of Members</u>	<u>Actual Population</u>	<u>Ideal Population</u>	<u>Absolute Deviation</u>	<u>Relative Deviation</u>
District 1	1	125,242	119,429	5,813	4.867%
District 2	1	116,037	119,429	-3,392	-2.840%
District 3	1	124,038	119,429	4,609	3.859%
District 4	1	125,205	119,429	5,776	4.836%
District 5	1	125,243	119,429	5,814	4.868%
District 6	1	125,213	119,429	5,784	4.843%
District 7	1	122,778	119,429	3,349	2.804%
District 8	1	117,493	119,429	-1,936	-1.621%
District 9	1	125,229	119,429	5,800	4.856%
District 10	1	119,410	119,429	-19	-0.016%
District 11	1	124,986	119,429	5,557	4.653%
District 12	1	125,362	119,429	5,933	4.968%
District 13	1	125,132	119,429	5,703	4.775%
District 14	1	116,205	119,429	-3,224	-2.700%
District 15	1	119,521	119,429	92	0.077%
District 16	1	121,218	119,429	1,789	1.498%
District 17	1	113,592	119,429	-5,837	-4.887%
District 18	1	115,919	119,429	-3,510	-2.939%
District 19	1	114,401	119,429	-5,028	-4.210%
District 20	1	118,602	119,429	-827	-0.692%
District 21	1	117,347	119,429	-2,082	-1.743%
District 22	1	123,071	119,429	3,642	3.050%
District 23	1	123,501	119,429	4,072	3.410%
District 24	1	116,446	119,429	-2,983	-2.498%
District 25	1	116,365	119,429	-3,064	-2.566%
District 26	1	124,989	119,429	5,560	4.655%
District 27	1	118,999	119,429	-430	-0.360%
District 28	1	121,948	119,429	2,519	2.109%
District 29	1	118,316	119,429	-1,113	-0.932%
District 30	1	114,035	119,429	-5,394	-4.516%
District 31	1	117,557	119,429	-1,872	-1.567%
District 32	1	124,015	119,429	4,586	3.840%
District 33	1	114,704	119,429	-4,725	-3.956%
District 34	1	113,512	119,429	-5,917	-4.954%
District 35	1	114,086	119,429	-5,343	-4.474%
District 36	1	115,008	119,429	-4,421	-3.702%
District 37	1	113,886	119,429	-5,543	-4.641%
District 38	1	115,420	119,429	-4,009	-3.357%
District 39	1	113,726	119,429	-5,703	-4.775%
Grand Total:	39	4,657,757	4,657,731		
Ideal Population Per Member:		119429			
Number of Districts for Plan Type:		39			
Range of District Populations:		113,512	to	125,362	
Absolute Mean Deviation:		304			
Absolute Range:		-5,917	to	5,933	
Absolute Overall Range:		11,850			
Relative Mean Deviation:		3.28%			
Relative Range:		-4.95%	to	4.97%	
Relative Overall Range:		9.92%			

<i>Ideal - Actual:</i>	-26
<i>Remainder:</i>	26
<i>Unassigned Population:</i>	0

Total Population

Plan: 24RS-2145 (Jordan)

	Total Population	Total White	Total Black	Total Asian	Total American Indian	Total Other	Total Hispanic	VAP Total	VAP White	VAP Black	VAP Asian	VAP American Indian	VAP Other	VAP Hispanic Total
District 1	125,242	80,589	30,475	2,987	2,969	8,222	10,126	95,874	64,551	21,011	2,182	2,235	5,895	6,987
	100.000%	64.347%	24.333%	2.385%	2.371%	6.565%	8.085%	100.000%	67.329%	21.915%	2.276%	2.331%	6.149%	7.288%
District 2	116,037	40,242	68,805	888	1,024	5,078	6,440	88,769	33,348	50,297	665	753	3,706	4,554
	100.000%	34.680%	59.296%	0.765%	0.882%	4.376%	5.550%	100.000%	37.567%	56.661%	0.749%	0.848%	4.175%	5.130%
District 3	124,038	34,748	73,605	6,467	1,430	7,788	10,437	94,468	28,695	54,187	5,083	1,085	5,418	7,040
	100.000%	28.014%	59.341%	5.214%	1.153%	6.279%	8.414%	100.000%	30.375%	57.360%	5.381%	1.149%	5.735%	7.452%
District 4	125,205	40,685	74,000	2,397	1,137	6,986	8,984	98,076	34,565	55,571	1,877	915	5,148	6,552
	100.000%	32.495%	59.103%	1.914%	0.908%	5.580%	7.175%	100.000%	35.243%	56.661%	1.914%	0.933%	5.249%	6.681%
District 5	125,243	43,607	68,241	3,871	1,286	8,238	12,666	101,994	38,710	52,749	3,299	1,032	6,204	9,848
	100.000%	34.818%	54.487%	3.091%	1.027%	6.578%	10.113%	100.000%	37.953%	51.718%	3.235%	1.012%	6.083%	9.655%
District 6	125,213	98,223	14,630	1,903	2,717	7,740	8,583	93,240	75,136	9,697	1,279	2,062	5,066	5,413
	100.000%	78.445%	11.684%	1.520%	2.170%	6.181%	6.855%	100.000%	80.583%	10.400%	1.372%	2.211%	5.433%	5.805%
District 7	122,778	33,696	67,811	6,041	1,733	13,497	16,952	94,236	28,785	49,900	4,850	1,374	9,327	11,559
	100.000%	27.445%	55.231%	4.920%	1.411%	10.993%	13.807%	100.000%	30.546%	52.952%	5.147%	1.458%	9.897%	12.266%
District 8	117,493	64,636	30,869	7,392	2,942	11,654	15,027	90,147	52,109	22,058	5,637	2,212	8,131	10,228
	100.000%	55.013%	26.273%	6.291%	2.504%	9.919%	12.790%	100.000%	57.804%	24.469%	6.253%	2.454%	9.020%	11.346%
District 9	125,229	85,544	15,185	5,669	1,941	16,890	21,521	101,475	72,204	11,298	4,342	1,449	12,182	15,414
	100.000%	68.310%	12.126%	4.527%	1.550%	13.487%	17.185%	100.000%	71.154%	11.134%	4.279%	1.428%	12.005%	15.190%
District 10	119,410	73,319	16,669	6,169	2,121	21,132	26,127	95,236	61,146	12,268	4,634	1,604	15,584	18,884
	100.000%	61.401%	13.959%	5.166%	1.776%	17.697%	21.880%	100.000%	64.205%	12.882%	4.866%	1.684%	16.364%	19.829%
District 11	124,986	99,973	10,685	2,748	2,398	9,182	10,446	94,613	77,216	7,429	1,861	1,717	6,390	7,130
	100.000%	79.987%	8.549%	2.199%	1.919%	7.346%	8.358%	100.000%	81.612%	7.852%	1.967%	1.815%	6.754%	7.536%
District 12	125,362	83,531	34,317	879	2,158	4,477	5,434	97,028	66,749	24,847	678	1,618	3,136	3,698
	100.000%	66.632%	27.374%	0.701%	1.721%	3.571%	4.335%	100.000%	68.794%	25.608%	0.699%	1.668%	3.232%	3.811%
District 13	125,132	85,968	27,799	1,804	2,448	7,113	8,209	93,048	66,733	18,559	1,246	1,781	4,729	5,238
	100.000%	68.702%	22.216%	1.442%	1.956%	5.684%	6.560%	100.000%	71.719%	19.946%	1.339%	1.914%	5.082%	5.629%
District 14	116,205	36,487	68,034	4,400	1,019	6,265	7,963	91,822	31,850	51,096	3,570	813	4,493	5,748
	100.000%	31.399%	58.547%	3.786%	0.877%	5.391%	6.853%	100.000%	34.687%	55.647%	3.888%	0.885%	4.893%	6.260%
District 15	119,521	29,554	76,374	4,563	970	8,060	9,176	90,826	25,321	55,660	3,484	795	5,566	6,275
	100.000%	24.727%	63.900%	3.818%	0.812%	6.744%	7.677%	100.000%	27.879%	61.282%	3.836%	0.875%	6.128%	6.909%
District 16	121,218	84,583	21,883	5,847	1,546	7,359	8,451	98,343	71,020	16,205	4,428	1,220	5,470	6,194
	100.000%	69.778%	18.053%	4.824%	1.275%	6.071%	6.972%	100.000%	72.217%	16.478%	4.503%	1.241%	5.562%	6.298%
District 17	113,592	46,205	62,295	949	995	3,148	3,480	85,767	36,575	45,490	675	722	2,305	2,470
	100.000%	40.676%	54.841%	0.835%	0.876%	2.771%	3.064%	100.000%	42.645%	53.039%	0.787%	0.842%	2.688%	2.880%
District 18	115,919	85,980	17,766	2,237	2,032	7,904	9,057	84,768	64,788	11,929	1,451	1,439	5,161	5,776
	100.000%	74.172%	15.326%	1.930%	1.753%	6.819%	7.813%	100.000%	76.430%	14.073%	1.712%	1.698%	6.088%	6.814%

Total Population

Plan: 24RS-2145 (Jordan)

	Total Population	Total White	Total Black	Total Asian	Total American Indian	Total Other	Total Hispanic	VAP Total	VAP White	VAP Black	VAP Asian	VAP American Indian	VAP Other	VAP Hispanic Total
District 19	114,401	67,705	33,842	1,511	1,931	9,412	11,596	86,554	53,502	24,185	1,005	1,364	6,498	7,760
	100.000%	59.182%	29.582%	1.321%	1.688%	8.227%	10.136%	100.000%	61.813%	27.942%	1.161%	1.576%	7.507%	8.966%
District 20	118,602	81,643	18,493	1,783	9,847	6,836	8,245	89,792	64,618	12,843	1,271	6,505	4,555	5,297
	100.000%	68.838%	15.592%	1.503%	8.303%	5.764%	6.952%	100.000%	71.964%	14.303%	1.415%	7.245%	5.073%	5.899%
District 21	117,347	75,812	27,908	1,731	4,130	7,766	8,949	89,417	60,580	19,621	1,231	2,836	5,149	5,811
	100.000%	64.605%	23.782%	1.475%	3.519%	6.618%	7.626%	100.000%	67.750%	21.943%	1.377%	3.172%	5.758%	6.499%
District 22	123,071	75,555	38,833	2,911	1,405	4,367	5,315	93,047	59,715	27,095	2,080	1,057	3,100	3,667
	100.000%	61.391%	31.553%	2.365%	1.142%	3.548%	4.319%	100.000%	64.177%	29.120%	2.235%	1.136%	3.332%	3.941%
District 23	123,501	92,590	17,320	4,860	1,837	6,894	8,184	95,665	73,727	12,025	3,584	1,423	4,906	5,836
	100.000%	74.971%	14.024%	3.935%	1.487%	5.582%	6.627%	100.000%	77.068%	12.570%	3.746%	1.487%	5.128%	6.100%
District 24	116,446	42,872	67,481	817	890	4,386	5,016	86,985	34,645	48,289	577	606	2,868	3,168
	100.000%	36.817%	57.950%	0.702%	0.764%	3.767%	4.308%	100.000%	39.829%	55.514%	0.663%	0.697%	3.297%	3.642%
District 25	116,365	79,316	27,386	3,018	1,808	4,837	5,619	87,300	61,630	18,800	2,137	1,338	3,395	3,782
	100.000%	68.161%	23.535%	2.594%	1.554%	4.157%	4.829%	100.000%	70.596%	21.535%	2.448%	1.533%	3.889%	4.332%
District 26	124,989	92,209	23,427	2,228	1,475	5,650	6,519	93,896	71,683	15,795	1,584	1,114	3,720	4,189
	100.000%	73.774%	18.743%	1.783%	1.180%	4.520%	5.216%	100.000%	76.343%	16.822%	1.687%	1.186%	3.962%	4.461%
District 27	118,999	74,616	35,902	1,775	1,810	4,896	6,021	89,911	58,181	25,761	1,276	1,311	3,382	3,982
	100.000%	62.703%	30.170%	1.492%	1.521%	4.114%	5.060%	100.000%	64.710%	28.652%	1.419%	1.458%	3.761%	4.429%
District 28	121,948	89,125	26,478	851	1,925	3,569	5,057	91,817	68,532	18,543	611	1,352	2,779	4,034
	100.000%	73.084%	21.713%	0.698%	1.579%	2.927%	4.147%	100.000%	74.640%	20.196%	0.665%	1.472%	3.027%	4.394%
District 29	118,316	41,422	70,698	1,400	1,686	3,110	3,723	91,250	34,605	51,896	1,125	1,299	2,325	2,719
	100.000%	35.010%	59.754%	1.183%	1.425%	2.629%	3.147%	100.000%	37.923%	56.872%	1.233%	1.424%	2.548%	2.980%
District 30	114,035	88,186	14,866	2,100	3,567	5,316	7,178	85,224	67,008	10,425	1,525	2,607	3,659	4,645
	100.000%	77.332%	13.036%	1.842%	3.128%	4.662%	6.295%	100.000%	78.626%	12.232%	1.789%	3.059%	4.293%	5.450%
District 31	117,557	80,210	28,727	2,037	2,397	4,186	4,705	92,324	64,505	21,253	1,510	1,836	3,220	3,477
	100.000%	68.231%	24.437%	1.733%	2.039%	3.561%	4.002%	100.000%	69.868%	23.020%	1.636%	1.989%	3.488%	3.766%
District 32	124,015	79,834	38,399	866	1,825	3,091	3,953	97,609	64,460	28,465	687	1,369	2,628	3,255
	100.000%	64.374%	30.963%	0.698%	1.472%	2.492%	3.188%	100.000%	66.039%	29.162%	0.704%	1.403%	2.692%	3.335%
District 33	114,704	88,547	18,909	1,385	2,424	3,439	3,758	87,570	69,197	13,212	966	1,835	2,360	2,394
	100.000%	77.196%	16.485%	1.207%	2.113%	2.998%	3.276%	100.000%	79.019%	15.087%	1.103%	2.095%	2.695%	2.734%
District 34	113,512	32,422	76,874	1,117	942	2,157	2,769	85,382	27,289	54,689	914	722	1,768	2,174
	100.000%	28.563%	67.723%	0.984%	0.830%	1.900%	2.439%	100.000%	31.961%	64.052%	1.070%	0.846%	2.071%	2.546%
District 35	114,086	87,354	17,636	1,715	2,948	4,433	5,742	87,857	68,285	12,578	1,316	2,263	3,415	4,486
	100.000%	76.569%	15.459%	1.503%	2.584%	3.886%	5.033%	100.000%	77.723%	14.316%	1.498%	2.576%	3.887%	5.106%
District 36	115,008	81,484	24,562	2,130	2,785	4,047	4,798	86,987	62,754	18,033	1,424	2,112	2,664	3,069
	100.000%	70.851%	21.357%	1.852%	2.422%	3.519%	4.172%	100.000%	72.142%	20.731%	1.637%	2.428%	3.063%	3.528%

Total Population

Plan: 24RS-2145 (Jordan)

	Total Population	Total White	Total Black	Total Asian	Total American Indian	Total Other	Total Hispanic	VAP Total	VAP White	VAP Black	VAP Asian	VAP American Indian	VAP Other	VAP Hispanic Total
District 37	113,886	37,102	66,051	2,472	1,715	6,546	8,112	85,827	31,426	46,693	1,873	1,374	4,461	5,475
	100.000%	32.578%	57.997%	2.171%	1.506%	5.748%	7.123%	100.000%	36.616%	54.404%	2.182%	1.601%	5.198%	6.379%
District 38	115,420	79,885	24,145	2,467	5,103	3,820	4,665	89,518	63,780	17,448	1,798	3,800	2,692	3,110
	100.000%	69.212%	20.919%	2.137%	4.421%	3.310%	4.042%	100.000%	71.248%	19.491%	2.009%	4.245%	3.007%	3.474%
District 39	113,726	42,193	65,739	903	1,744	3,147	3,546	86,886	34,888	47,869	681	1,291	2,157	2,324
	100.000%	37.101%	57.805%	0.794%	1.534%	2.767%	3.118%	100.000%	40.154%	55.094%	0.784%	1.486%	2.483%	2.675%
Grand Total	4,657,757	2,657,652	1,543,119	107,288	87,060	262,638	322,549	3,570,548	2,124,511	1,115,769	80,416	64,240	185,612	223,662
	100.000%	57.059%	33.130%	2.303%	1.869%	5.639%	6.925%	100.000%	59.501%	31.249%	2.252%	1.799%	5.198%	6.264%

Voter Registration

Plan: 24RS-2145 (Jordan)

	Reg Total Dec 2021	Reg White Dec 2021	Reg Black Dec 2021	Reg Other Dec 2021	Reg Dem Total Dec 2021	Reg Rep Total Dec 2021	Reg Other Total Dec 2021
District 1	81,620	58,758	17,061	5,801	24,878	31,304	25,438
	85.133%	71.990%	20.903%	7.107%	30.480%	38.353%	31.166%
District 2	76,359	27,074	46,655	2,630	47,712	12,645	16,002
	86.020%	35.456%	61.100%	3.444%	62.484%	16.560%	20.956%
District 3	80,670	26,043	46,837	7,790	51,424	8,225	21,019
	85.394%	32.283%	58.060%	9.657%	63.746%	10.196%	26.056%
District 4	82,479	29,861	46,696	5,922	52,696	9,126	20,659
	84.097%	36.204%	56.616%	7.180%	63.890%	11.065%	25.048%
District 5	83,311	30,449	45,322	7,540	53,352	7,349	22,610
	81.682%	36.549%	54.401%	9.050%	64.040%	8.821%	27.139%
District 6	77,582	67,487	7,112	2,983	17,184	39,170	21,228
	83.207%	86.988%	9.167%	3.845%	22.149%	50.489%	27.362%
District 7	71,039	22,629	39,497	8,913	42,289	9,184	19,566
	75.384%	31.854%	55.599%	12.547%	59.529%	12.928%	27.543%
District 8	71,229	45,046	17,661	8,522	27,296	21,656	22,277
	79.014%	63.241%	24.795%	11.964%	38.321%	30.403%	31.275%
District 9	77,148	63,430	5,709	8,009	23,117	31,259	22,772
	76.027%	82.219%	7.400%	10.381%	29.964%	40.518%	29.517%
District 10	73,647	54,777	7,400	11,470	20,862	30,217	22,568
	77.331%	74.378%	10.048%	15.574%	28.327%	41.030%	30.643%
District 11	85,512	74,308	5,534	5,670	15,632	44,791	25,089
	90.381%	86.898%	6.472%	6.631%	18.280%	52.380%	29.340%
District 12	78,006	56,496	19,109	2,401	27,931	30,057	20,018
	80.395%	72.425%	24.497%	3.078%	35.806%	38.532%	25.662%
District 13	70,728	55,083	12,684	2,961	19,786	29,980	20,962
	76.012%	77.880%	17.933%	4.186%	27.975%	42.388%	29.637%
District 14	64,569	20,488	40,219	3,862	37,533	10,168	16,868
	70.320%	31.730%	62.288%	5.981%	58.129%	15.747%	26.124%
District 15	69,046	21,327	43,301	4,418	40,277	12,025	16,744
	76.020%	30.888%	62.713%	6.399%	58.334%	17.416%	24.250%
District 16	79,479	62,721	11,093	5,665	22,777	34,485	22,217
	80.818%	78.915%	13.957%	7.128%	28.658%	43.389%	27.953%
District 17	77,207	33,652	41,688	1,867	43,745	16,764	16,698
	90.019%	43.587%	53.995%	2.418%	56.659%	21.713%	21.628%
District 18	73,791	60,133	9,726	3,932	19,653	32,984	21,154
	87.051%	81.491%	13.180%	5.329%	26.633%	44.699%	28.667%
District 19	73,830	48,369	21,454	4,007	30,149	24,253	19,428
	85.299%	65.514%	29.059%	5.427%	40.836%	32.850%	26.315%
District 20	67,367	53,869	8,365	5,133	19,754	27,914	19,699
	75.026%	79.963%	12.417%	7.619%	29.323%	41.436%	29.241%
District 21	71,331	51,966	15,853	3,512	24,577	26,722	20,032
	79.773%	72.852%	22.225%	4.924%	34.455%	37.462%	28.083%
District 22	80,113	53,973	23,311	2,829	31,034	29,016	20,063
	86.099%	67.371%	29.098%	3.531%	38.738%	36.219%	25.043%
District 23	80,021	66,964	8,043	5,014	18,305	38,722	22,994
	83.647%	83.683%	10.051%	6.266%	22.875%	48.390%	28.735%
District 24	74,426	29,439	42,411	2,576	40,461	15,608	18,357
	85.562%	39.555%	56.984%	3.461%	54.364%	20.971%	24.665%
District 25	65,922	50,358	12,911	2,653	22,605	25,043	18,274
	75.512%	76.390%	19.585%	4.024%	34.291%	37.989%	27.721%
District 26	78,656	62,767	13,185	2,704	27,339	30,322	20,995
	83.769%	79.799%	16.763%	3.438%	34.758%	38.550%	26.692%
District 27	68,062	46,302	18,881	2,879	25,556	23,212	19,294
	75.699%	68.029%	27.741%	4.230%	37.548%	34.104%	28.348%
District 28	77,001	59,887	15,228	1,886	29,598	29,903	17,500
	83.864%	77.774%	19.776%	2.449%	38.438%	38.835%	22.727%
District 29	66,697	25,039	39,239	2,419	36,345	13,576	16,776
	73.093%	37.541%	58.832%	3.627%	54.493%	20.355%	25.153%
District 30	63,730	53,186	6,754	3,790	16,758	28,309	18,663
	74.779%	83.455%	10.598%	5.947%	26.295%	44.420%	29.284%
District 31	76,910	56,203	18,060	2,647	25,643	32,923	18,344
	83.304%	73.076%	23.482%	3.442%	33.342%	42.807%	23.851%
District 32	78,527	53,065	23,863	1,599	33,559	27,629	17,339
	80.451%	67.575%	30.388%	2.036%	42.736%	35.184%	22.080%
District 33	76,605	63,236	11,027	2,342	18,536	39,214	18,855
	87.479%	82.548%	14.395%	3.057%	24.197%	51.190%	24.613%
District 34	73,369	21,965	49,765	1,639	43,889	13,479	16,001
	85.930%	29.938%	67.828%	2.234%	59.820%	18.372%	21.809%
District 35	68,798	58,926	7,636	2,236	16,941	33,842	18,015
	78.307%	85.651%	11.099%	3.250%	24.624%	49.190%	26.185%

Voter Registration

Plan: 24RS-2145 (Jordan)

	Reg Total Dec 2021	Reg White Dec 2021	Reg Black Dec 2021	Reg Other Dec 2021	Reg Dem Total Dec 2021	Reg Rep Total Dec 2021	Reg Other Total Dec 2021
District 36	70,100	53,593	13,806	2,701	18,627	34,412	17,061
	80.587%	76.452%	19.695%	3.853%	26.572%	49.090%	24.338%
District 37	60,152	22,416	34,340	3,396	31,631	11,769	16,752
	70.085%	37.266%	57.089%	5.646%	52.585%	19.565%	27.849%
District 38	77,021	57,867	14,642	4,512	23,177	34,338	19,506
	86.040%	75.131%	19.010%	5.858%	30.092%	44.583%	25.326%
District 39	72,286	28,837	40,670	2,779	38,376	17,185	16,725
	83.196%	39.893%	56.263%	3.844%	53.089%	23.774%	23.137%
Grand Total	2,894,346	1,827,989	902,748	163,609	1,161,004	968,780	764,562

Splits

Plan: 24RS-2145 (Jordan)

	Total Population	Total White	Total Black	Total Asian	Total American Indian	Total Other	VAP Total	VAP White	VAP Black	VAP Asian	VAP American Indian	VAP Other	Reg Total Dec 2021	Reg White Dec 2021	Reg Black Dec 2021	Reg Other Dec 2021
District 1																
*Orleans	1,028	715	99	75	17	122	851	632	79	47	13	80	578	479	40	59
*St. Bernard	10,003	5,262	3,574	92	217	858	7,417	4,093	2,469	65	160	630	6,567	4,102	2,167	298
*St. Tammany	114,211	74,612	26,802	2,820	2,735	7,242	87,606	59,826	18,463	2,070	2,062	5,185	74,475	54,177	14,854	5,444
District 1	125,242	80,589	30,475	2,987	2,969	8,222	95,874	64,551	21,011	2,182	2,235	5,895	81,620	58,758	17,061	5,801
	100.000%	64.347%	24.333%	2.385%	2.371%	6.565%	100.000%	67.329%	21.915%	2.276%	2.331%	6.149%	85.133%	71.990%	20.903%	7.107%
District 2																
*Ascension	23,331	6,693	14,912	167	221	1,338	17,263	5,535	10,546	127	147	908	14,545	4,580	9,358	607
*Assumption	11,014	4,985	5,613	45	92	279	8,597	3,989	4,306	21	75	206	7,829	3,500	4,223	106
*Iberville	16,426	5,708	9,645	133	102	838	12,995	4,922	7,163	100	78	732	10,351	3,119	6,994	238
*Lafourche	15,385	7,811	6,708	130	222	514	11,677	6,377	4,678	92	158	372	8,658	4,874	3,513	271
*St. Charles	1,168	146	1,012	4	3	3	933	141	785	2	2	3	514	15	490	9
*St. James	15,184	6,249	8,595	48	60	232	11,853	5,157	6,457	26	48	165	11,616	4,683	6,769	164
*St. John the Baptist	33,529	8,650	22,320	361	324	1,874	25,451	7,227	16,362	297	245	1,320	22,846	6,303	15,308	1,235
District 2	116,037	40,242	68,805	888	1,024	5,078	88,769	33,348	50,297	665	753	3,706	76,359	27,074	46,655	2,630
	100.000%	34.680%	59.296%	0.765%	0.882%	4.376%	100.000%	37.567%	56.661%	0.749%	0.848%	4.175%	86.020%	35.456%	61.100%	3.444%
District 3																
*Orleans	90,277	15,513	64,870	5,178	700	4,016	70,110	13,796	48,712	4,166	557	2,879	61,584	11,912	43,507	6,165
*St. Bernard	33,761	19,235	8,735	1,289	730	3,772	24,358	14,899	5,475	917	528	2,539	19,086	14,131	3,330	1,625
District 3	124,038	34,748	73,605	6,467	1,430	7,788	94,468	28,695	54,187	5,083	1,085	5,418	80,670	26,043	46,837	7,790
	100.000%	28.014%	59.341%	5.214%	1.153%	6.279%	100.000%	30.375%	57.360%	5.381%	1.149%	5.735%	85.394%	32.283%	58.060%	9.657%
District 4																
*Orleans	125,205	40,685	74,000	2,397	1,137	6,986	98,076	34,565	55,571	1,877	915	5,148	82,479	29,861	46,696	5,922
District 4	125,205	40,685	74,000	2,397	1,137	6,986	98,076	34,565	55,571	1,877	915	5,148	82,479	29,861	46,696	5,922
	100.000%	32.495%	59.103%	1.914%	0.908%	5.580%	100.000%	35.243%	56.661%	1.914%	0.933%	5.249%	84.097%	36.204%	56.616%	7.180%
District 5																
*Jefferson	35,198	3,597	28,140	1,154	252	2,055	26,175	3,070	20,540	940	175	1,450	23,089	2,348	18,927	1,814
*Orleans	90,045	40,010	40,101	2,717	1,034	6,183	75,819	35,640	32,209	2,359	857	4,754	60,222	28,101	26,395	5,726
District 5	125,243	43,607	68,241	3,871	1,286	8,238	101,994	38,710	52,749	3,299	1,032	6,204	83,311	30,449	45,322	7,540
	100.000%	34.818%	54.487%	3.091%	1.027%	6.578%	100.000%	37.953%	51.718%	3.235%	1.012%	6.083%	81.682%	36.549%	54.401%	9.050%
District 6																
*East Baton Rouge	42,182	29,064	8,081	1,097	744	3,196	31,798	22,846	5,485	770	576	2,121	27,532	21,931	4,369	1,232
*Livingston	76,559	64,951	5,173	732	1,799	3,904	56,628	48,923	3,335	467	1,351	2,552	46,714	42,878	2,245	1,591
*Tangipahoa	6,472	4,208	1,376	74	174	640	4,814	3,367	877	42	135	393	3,336	2,678	498	160
District 6	125,213	98,223	14,630	1,903	2,717	7,740	93,240	75,136	9,697	1,279	2,062	5,066	77,582	67,487	7,112	2,983
	100.000%	78.445%	11.684%	1.520%	2.170%	6.181%	100.000%	80.583%	10.400%	1.372%	2.211%	5.433%	83.207%	86.988%	9.167%	3.845%

Splits

Plan: 24RS-2145 (Jordan)

	Total Population	Total White	Total Black	Total Asian	Total American Indian	Total Other	VAP Total	VAP White	VAP Black	VAP Asian	VAP American Indian	VAP Other	Reg Total Dec 2021	Reg White Dec 2021	Reg Black Dec 2021	Reg Other Dec 2021
District 7																
*Jefferson	55,879	15,004	26,395	4,031	997	9,452	41,904	12,317	19,317	3,168	780	6,322	27,216	8,987	13,378	4,851
*Orleans	62,873	17,677	38,794	1,931	610	3,861	49,122	15,611	28,543	1,625	484	2,859	41,135	12,937	24,357	3,841
*Plaquemines	4,026	1,015	2,622	79	126	184	3,210	857	2,040	57	110	146	2,688	705	1,762	221
District 7	122,778	33,696	67,811	6,041	1,733	13,497	94,236	28,785	49,900	4,850	1,374	9,327	71,039	22,629	39,497	8,913
	100.000%	27.445%	55.231%	4.920%	1.411%	10.993%	100.000%	30.546%	52.952%	5.147%	1.458%	9.897%	75.384%	31.854%	55.599%	12.547%
District 8																
*Jefferson	95,236	49,206	28,000	6,123	2,163	9,744	73,906	40,413	20,205	4,741	1,670	6,877	58,545	34,892	16,280	7,373
*Lafourche	2,768	2,158	63	31	208	308	2,117	1,697	36	28	152	204	1,464	1,346	9	109
*Plaquemines	19,489	13,272	2,806	1,238	571	1,602	14,124	9,999	1,817	868	390	1,050	11,220	8,808	1,372	1,040
District 8	117,493	64,636	30,869	7,392	2,942	11,654	90,147	52,109	22,058	5,637	2,212	8,131	71,229	45,046	17,661	8,522
	100.000%	55.013%	26.273%	6.291%	2.504%	9.919%	100.000%	57.804%	24.469%	6.253%	2.454%	9.020%	79.014%	63.241%	24.795%	11.964%
District 9																
*Jefferson	110,660	73,682	14,080	5,111	1,773	16,014	89,257	62,196	10,344	3,896	1,327	11,494	66,902	54,734	5,179	6,989
*Orleans	14,569	11,862	1,105	558	168	876	12,218	10,008	954	446	122	688	10,246	8,696	530	1,020
District 9	125,229	85,544	15,185	5,669	1,941	16,890	101,475	72,204	11,298	4,342	1,449	12,182	77,148	63,430	5,709	8,009
	100.000%	68.310%	12.126%	4.527%	1.550%	13.487%	100.000%	71.154%	11.134%	4.279%	1.428%	12.005%	76.027%	82.219%	7.400%	10.381%
District 10																
*Jefferson	119,410	73,319	16,669	6,169	2,121	21,132	95,236	61,146	12,268	4,634	1,604	15,584	73,647	54,777	7,400	11,470
District 10	119,410	73,319	16,669	6,169	2,121	21,132	95,236	61,146	12,268	4,634	1,604	15,584	73,647	54,777	7,400	11,470
	100.000%	61.401%	13.959%	5.166%	1.776%	17.697%	100.000%	64.205%	12.882%	4.866%	1.684%	16.364%	77.331%	74.378%	10.048%	15.574%
District 11																
*St. Tammany	124,986	99,973	10,685	2,748	2,398	9,182	94,613	77,216	7,429	1,861	1,717	6,390	85,512	74,308	5,534	5,670
District 11	124,986	99,973	10,685	2,748	2,398	9,182	94,613	77,216	7,429	1,861	1,717	6,390	85,512	74,308	5,534	5,670
	100.000%	79.987%	8.549%	2.199%	1.919%	7.346%	100.000%	81.612%	7.852%	1.967%	1.815%	6.754%	90.381%	86.898%	6.472%	6.631%
District 12																
*St. Tammany	25,373	22,056	1,156	206	527	1,428	20,009	17,579	869	144	382	1,035	18,792	17,239	754	799
*Tangipahoa	54,526	31,532	19,727	457	895	1,915	42,068	25,427	14,246	380	675	1,340	31,627	20,422	10,253	952
Washington	45,463	29,943	13,434	216	736	1,134	34,951	23,743	9,732	154	561	761	27,587	18,835	8,102	650
District 12	125,362	83,531	34,317	879	2,158	4,477	97,028	66,749	24,847	678	1,618	3,136	78,006	56,496	19,109	2,401
	100.000%	66.632%	27.374%	0.701%	1.721%	3.571%	100.000%	68.794%	25.608%	0.699%	1.668%	3.232%	80.395%	72.425%	24.497%	3.078%
District 13																
*Livingston	52,973	40,372	7,023	861	1,063	3,654	38,439	30,322	4,465	568	764	2,320	29,435	25,271	2,910	1,254
*Tangipahoa	72,159	45,596	20,776	943	1,385	3,459	54,609	36,411	14,094	678	1,017	2,409	41,293	29,812	9,774	1,707
District 13	125,132	85,968	27,799	1,804	2,448	7,113	93,048	66,733	18,559	1,246	1,781	4,729	70,728	55,083	12,684	2,961
	100.000%	68.702%	22.216%	1.442%	1.956%	5.684%	100.000%	71.719%	19.946%	1.339%	1.914%	5.082%	76.012%	77.880%	17.933%	4.186%
District 14																

Splits

Plan: 24RS-2145 (Jordan)

	Total Population	Total White	Total Black	Total Asian	Total American Indian	Total Other	VAP Total	VAP White	VAP Black	VAP Asian	VAP American Indian	VAP Other	Reg Total Dec 2021	Reg White Dec 2021	Reg Black Dec 2021	Reg Other Dec 2021
District 14																
*East Baton Rouge	116,205	36,487	68,034	4,400	1,019	6,265	91,822	31,850	51,096	3,570	813	4,493	64,569	20,488	40,219	3,862
District 14	116,205	36,487	68,034	4,400	1,019	6,265	91,822	31,850	51,096	3,570	813	4,493	64,569	20,488	40,219	3,862
	100.000%	31.399%	58.547%	3.786%	0.877%	5.391%	100.000%	34.687%	55.647%	3.888%	0.885%	4.893%	70.320%	31.730%	62.288%	5.981%
District 15																
*East Baton Rouge	119,521	29,554	76,374	4,563	970	8,060	90,826	25,321	55,660	3,484	795	5,566	69,046	21,327	43,301	4,418
District 15	119,521	29,554	76,374	4,563	970	8,060	90,826	25,321	55,660	3,484	795	5,566	69,046	21,327	43,301	4,418
	100.000%	24.727%	63.900%	3.818%	0.812%	6.744%	100.000%	27.879%	61.282%	3.836%	0.875%	6.128%	76.020%	30.888%	62.713%	6.399%
District 16																
*East Baton Rouge	121,218	84,583	21,883	5,847	1,546	7,359	98,343	71,020	16,205	4,428	1,220	5,470	79,479	62,721	11,093	5,665
District 16	121,218	84,583	21,883	5,847	1,546	7,359	98,343	71,020	16,205	4,428	1,220	5,470	79,479	62,721	11,093	5,665
	100.000%	69.778%	18.053%	4.824%	1.275%	6.071%	100.000%	72.217%	16.478%	4.503%	1.241%	5.562%	80.818%	78.915%	13.957%	7.128%
District 17																
*East Baton Rouge	56,535	15,506	38,828	512	437	1,252	41,938	12,145	28,195	342	333	923	37,735	11,016	25,563	1,156
*Iberville	5,531	2,589	2,727	27	54	134	4,377	2,097	2,115	18	38	109	4,361	2,134	2,139	88
Pointe Coupee	20,758	12,395	7,504	107	159	593	16,250	10,108	5,502	91	119	430	14,675	9,320	5,121	234
*St. Landry	2,153	945	1,145	11	12	40	1,653	748	863	10	8	24	2,113	921	1,157	35
West Baton Rouge	27,199	14,307	11,170	287	326	1,109	20,526	11,146	8,149	209	219	803	17,141	9,937	6,865	339
*West Feliciana	1,416	463	921	5	7	20	1,023	331	666	5	5	16	1,182	324	843	15
District 17	113,592	46,205	62,295	949	995	3,148	85,767	36,575	45,490	675	722	2,305	77,207	33,652	41,688	1,867
	100.000%	40.676%	54.841%	0.835%	0.876%	2.771%	100.000%	42.645%	53.039%	0.787%	0.842%	2.688%	90.019%	43.587%	53.995%	2.418%
District 18																
*Ascension	103,169	74,448	17,304	2,133	1,783	7,501	74,694	55,601	11,593	1,387	1,243	4,870	65,372	52,220	9,456	3,696
*Livingston	12,750	11,532	462	104	249	403	10,074	9,187	336	64	196	291	8,419	7,913	270	236
District 18	115,919	85,980	17,766	2,237	2,032	7,904	84,768	64,788	11,929	1,451	1,439	5,161	73,791	60,133	9,726	3,932
	100.000%	74.172%	15.326%	1.930%	1.753%	6.819%	100.000%	76.430%	14.073%	1.712%	1.698%	6.088%	87.051%	81.491%	13.180%	5.329%
District 19																
*Jefferson	24,398	6,127	12,933	436	380	4,522	18,176	4,993	9,501	313	279	3,090	13,702	3,878	8,412	1,412
*Lafourche	24,666	19,223	3,950	188	466	839	19,066	15,375	2,664	134	299	594	16,240	13,710	2,077	453
*St. Charles	51,381	33,404	12,916	833	922	3,306	38,608	26,013	9,105	527	665	2,298	34,471	24,294	8,307	1,870
*St. James	5,008	3,724	1,167	12	22	83	3,652	2,726	840	5	16	65	3,350	2,571	732	47
*St. John the Baptist	8,948	5,227	2,876	42	141	662	7,052	4,395	2,075	26	105	451	6,067	3,916	1,926	225
District 19	114,401	67,705	33,842	1,511	1,931	9,412	86,554	53,502	24,185	1,005	1,364	6,498	73,830	48,369	21,454	4,007
	100.000%	59.182%	29.582%	1.321%	1.688%	8.227%	100.000%	61.813%	27.942%	1.161%	1.576%	7.507%	85.299%	65.514%	29.059%	5.427%
District 20																
*Lafourche	48,266	37,671	4,027	586	3,159	2,823	36,802	29,520	2,955	414	2,063	1,850	27,937	25,220	1,037	1,680

Splits

Plan: 24RS-2145 (Jordan)

	Total Population	Total White	Total Black	Total Asian	Total American Indian	Total Other	VAP Total	VAP White	VAP Black	VAP Asian	VAP American Indian	VAP Other	Reg Total Dec 2021	Reg White Dec 2021	Reg Black Dec 2021	Reg Other Dec 2021
District 20																
*Terrebonne	70,336	43,972	14,466	1,197	6,688	4,013	52,990	35,098	9,888	857	4,442	2,705	39,430	28,649	7,328	3,453
District 20	118,602	81,643	18,493	1,783	9,847	6,836	89,792	64,618	12,843	1,271	6,505	4,555	67,367	53,869	8,365	5,133
	100.000%	68.838%	15.592%	1.503%	8.303%	5.764%	100.000%	71.964%	14.303%	1.415%	7.245%	5.073%	75.026%	79.963%	12.417%	7.619%
District 21																
*Assumption	10,025	8,737	607	51	166	464	8,019	7,156	401	36	122	304	6,610	6,200	287	123
*Iberia	10,832	8,032	1,509	202	142	947	8,251	6,337	1,037	145	98	634	7,249	6,012	908	329
*Lafourche	6,472	4,847	1,107	90	169	259	4,957	3,869	744	70	105	169	3,979	3,317	528	134
*St. Martin	1,368	1,285	13	7	34	29	1,154	1,091	11	5	30	17	993	979	1	13
St. Mary	49,406	26,949	15,991	835	1,670	3,961	37,521	21,594	11,520	593	1,173	2,641	30,210	18,712	9,891	1,607
*Terrebonne	39,244	25,962	8,681	546	1,949	2,106	29,515	20,533	5,908	382	1,308	1,384	22,290	16,746	4,238	1,306
District 21	117,347	75,812	27,908	1,731	4,130	7,766	89,417	60,580	19,621	1,231	2,836	5,149	71,331	51,966	15,853	3,512
	100.000%	64.605%	23.782%	1.475%	3.519%	6.618%	100.000%	67.750%	21.943%	1.377%	3.172%	5.758%	79.773%	72.852%	22.225%	4.924%
District 22																
*Iberia	59,097	31,174	23,047	1,921	652	2,303	44,540	24,958	16,032	1,417	483	1,650	37,277	22,275	13,444	1,558
*Iberville	8,284	6,536	1,358	42	118	230	6,714	5,443	954	31	105	181	5,750	4,879	764	107
*Lafayette	13,997	10,244	2,506	403	215	629	10,046	7,569	1,661	251	145	420	8,734	6,966	1,294	474
*St. Martin	41,693	27,601	11,922	545	420	1,205	31,747	21,745	8,448	381	324	849	28,352	19,853	7,809	690
District 22	123,071	75,555	38,833	2,911	1,405	4,367	93,047	59,715	27,095	2,080	1,057	3,100	80,113	53,973	23,311	2,829
	100.000%	61.391%	31.553%	2.365%	1.142%	3.548%	100.000%	64.177%	29.120%	2.235%	1.136%	3.332%	86.099%	67.371%	29.098%	3.531%
District 23																
*Lafayette	123,501	92,590	17,320	4,860	1,837	6,894	95,665	73,727	12,025	3,584	1,423	4,906	80,021	66,964	8,043	5,014
District 23	123,501	92,590	17,320	4,860	1,837	6,894	95,665	73,727	12,025	3,584	1,423	4,906	80,021	66,964	8,043	5,014
	100.000%	74.971%	14.024%	3.935%	1.487%	5.582%	100.000%	77.068%	12.570%	3.746%	1.487%	5.128%	83.647%	83.683%	10.051%	6.266%
District 24																
*Lafayette	67,316	24,760	38,306	540	588	3,122	50,495	20,189	27,515	382	398	2,011	42,210	16,827	23,597	1,786
*St. Landry	41,619	14,724	25,348	241	237	1,069	30,910	11,790	18,051	178	166	725	27,241	10,203	16,330	708
*St. Martin	7,511	3,388	3,827	36	65	195	5,580	2,666	2,723	17	42	132	4,975	2,409	2,484	82
District 24	116,446	42,872	67,481	817	890	4,386	86,985	34,645	48,289	577	606	2,868	74,426	29,439	42,411	2,576
	100.000%	36.817%	57.950%	0.702%	0.764%	3.767%	100.000%	39.829%	55.514%	0.663%	0.697%	3.297%	85.562%	39.555%	56.984%	3.461%
District 25																
*Calcasieu	78,498	49,018	21,424	2,805	1,261	3,990	58,903	38,409	14,715	2,003	966	2,810	41,120	29,398	9,621	2,101
Cameron	5,617	5,232	125	30	75	155	4,358	4,100	79	23	47	109	4,789	4,610	88	91
Jefferson Davis	32,250	25,066	5,837	183	472	692	24,039	19,121	4,006	111	325	476	20,013	16,350	3,202	461
District 25	116,365	79,316	27,386	3,018	1,808	4,837	87,300	61,630	18,800	2,137	1,338	3,395	65,922	50,358	12,911	2,653
	100.000%	68.161%	23.535%	2.594%	1.554%	4.157%	100.000%	70.596%	21.535%	2.448%	1.533%	3.889%	75.512%	76.390%	19.585%	4.024%
District 26																

Splits

Plan: 24RS-2145 (Jordan)

	Total Population	Total White	Total Black	Total Asian	Total American Indian	Total Other	VAP Total	VAP White	VAP Black	VAP Asian	VAP American Indian	VAP Other	Reg Total Dec 2021	Reg White Dec 2021	Reg Black Dec 2021	Reg Other Dec 2021
District 26																
*Acadia	28,490	20,009	7,513	138	250	580	21,627	15,781	5,200	101	174	371	18,340	13,428	4,599	313
*Lafayette	35,282	24,592	6,640	625	541	2,884	26,432	19,211	4,469	435	405	1,912	21,363	16,974	3,342	1,047
*St. Landry	3,858	3,131	464	18	61	184	2,825	2,328	339	11	47	100	2,184	1,860	250	74
Vermilion	57,359	44,477	8,810	1,447	623	2,002	43,012	34,363	5,787	1,037	488	1,337	36,769	30,505	4,994	1,270
District 26	124,989	92,209	23,427	2,228	1,475	5,650	93,896	71,683	15,795	1,584	1,114	3,720	78,656	62,767	13,185	2,704
	100.000%	73.774%	18.743%	1.783%	1.180%	4.520%	100.000%	76.343%	16.822%	1.687%	1.186%	3.962%	83.769%	79.799%	16.763%	3.438%
District 27																
*Calcasieu	118,999	74,616	35,902	1,775	1,810	4,896	89,911	58,181	25,761	1,276	1,311	3,382	68,062	46,302	18,881	2,879
District 27	118,999	74,616	35,902	1,775	1,810	4,896	89,911	58,181	25,761	1,276	1,311	3,382	68,062	46,302	18,881	2,879
	100.000%	62.703%	30.170%	1.492%	1.521%	4.114%	100.000%	64.710%	28.652%	1.419%	1.458%	3.761%	75.699%	68.029%	27.741%	4.230%
District 28																
*Acadia	29,086	24,471	3,351	100	323	841	21,316	18,290	2,183	72	226	545	19,338	17,127	1,808	403
Allen	22,750	16,327	4,490	246	947	740	17,510	12,751	3,275	182	646	656	12,201	9,478	2,217	506
Evangeline	32,350	21,354	9,235	241	280	1,240	24,408	16,460	6,483	187	217	1,061	20,553	14,566	5,643	344
*Lafayette	1,657	1,177	364	26	29	61	1,237	912	247	12	16	50	1,165	914	205	46
*St. Landry	34,910	24,811	8,879	229	326	665	26,423	19,343	6,244	154	230	452	22,944	17,109	5,268	567
*St. Martin	1,195	985	159	9	20	22	923	776	111	4	17	15	800	693	87	20
District 28	121,948	89,125	26,478	851	1,925	3,569	91,817	68,532	18,543	611	1,352	2,779	77,001	59,887	15,228	1,886
	100.000%	73.084%	21.713%	0.698%	1.579%	2.927%	100.000%	74.640%	20.196%	0.665%	1.472%	3.027%	83.864%	77.774%	19.776%	2.449%
District 29																
*Avoyelles	2,724	635	1,970	10	72	37	2,095	535	1,475	3	55	27	1,684	439	1,199	46
*Bienville	2,972	1,433	1,440	15	38	46	2,389	1,192	1,128	9	32	28	2,032	1,012	1,001	19
*Grant	5,246	3,309	1,739	21	103	74	4,079	2,657	1,282	14	81	45	3,502	2,311	1,115	76
*Jackson	5,429	2,569	2,388	115	62	295	4,265	2,083	1,780	106	39	257	2,818	1,398	1,365	55
*Lincoln	25,043	7,929	15,874	413	273	554	20,385	6,917	12,494	368	229	377	10,985	3,274	7,246	465
*Natchitoches	14,063	2,981	10,433	52	166	431	10,509	2,600	7,393	48	127	341	8,095	1,766	6,011	318
*Rapides	56,083	18,952	34,010	746	829	1,546	42,458	15,746	24,354	563	628	1,167	33,014	12,263	19,394	1,357
*Winn	6,756	3,614	2,844	28	143	127	5,070	2,875	1,990	14	108	83	4,567	2,576	1,908	83
District 29	118,316	41,422	70,698	1,400	1,686	3,110	91,250	34,605	51,896	1,125	1,299	2,325	66,697	25,039	39,239	2,419
	100.000%	35.010%	59.754%	1.183%	1.425%	2.629%	100.000%	37.923%	56.872%	1.233%	1.424%	2.548%	73.093%	37.541%	58.832%	3.627%
District 30																
Beauregard	36,549	29,529	4,649	402	1,052	917	27,489	22,304	3,495	269	773	648	22,294	18,771	2,369	1,154
*Calcasieu	19,288	16,138	2,060	122	465	503	14,352	12,199	1,422	80	327	324	11,329	9,959	1,011	359
*Rapides	9,448	7,432	546	134	450	886	7,122	5,740	375	102	347	558	6,047	5,274	363	410
Vernon	48,750	35,087	7,611	1,442	1,600	3,010	36,261	26,765	5,133	1,074	1,160	2,129	24,060	19,182	3,011	1,867

Splits

Plan: 24RS-2145 (Jordan)

	Total Population	Total White	Total Black	Total Asian	Total American Indian	Total Other	VAP Total	VAP White	VAP Black	VAP Asian	VAP American Indian	VAP Other	Reg Total Dec 2021	Reg White Dec 2021	Reg Black Dec 2021	Reg Other Dec 2021
District 30	114,035	88,186	14,866	2,100	3,567	5,316	85,224	67,008	10,425	1,525	2,607	3,659	63,730	53,186	6,754	3,790
	100.000%	77.332%	13.036%	1.842%	3.128%	4.662%	100.000%	78.626%	12.232%	1.789%	3.059%	4.293%	74.779%	83.455%	10.598%	5.947%
District 31																
*Bienville	10,009	5,517	4,160	42	169	121	7,684	4,294	3,156	21	130	83	6,815	3,831	2,916	68
*Claiborne	8,658	4,163	4,231	61	101	102	6,829	3,507	3,124	41	83	74	6,075	3,184	2,782	109
*Jackson	9,602	7,398	1,778	60	193	173	7,518	5,884	1,345	34	135	120	6,631	5,249	1,245	137
*Lincoln	23,353	18,105	3,490	479	389	890	18,270	14,389	2,625	376	297	583	14,664	12,398	1,770	496
*Natchitoches	23,452	16,380	5,292	203	695	882	18,840	13,410	4,022	150	556	702	15,012	11,084	3,213	715
*Rapides	26,184	19,502	4,315	995	567	805	20,326	15,598	3,002	733	420	573	16,974	13,818	2,254	902
Red River	7,620	4,195	3,106	25	171	123	5,714	3,338	2,164	3	116	93	5,631	3,130	2,418	83
*Union	3,871	2,010	1,516	14	45	286	3,052	1,662	1,140	10	37	203	2,689	1,492	1,094	103
*Winn	4,808	2,940	839	158	67	804	4,091	2,423	675	142	62	789	2,419	2,017	368	34
District 31	117,557	80,210	28,727	2,037	2,397	4,186	92,324	64,505	21,253	1,510	1,836	3,220	76,910	56,203	18,060	2,647
	100.000%	68.231%	24.437%	1.733%	2.039%	3.561%	100.000%	69.868%	23.020%	1.636%	1.989%	3.488%	83.304%	73.076%	23.482%	3.442%
District 32																
*Avoyelles	36,969	24,990	9,708	424	695	1,152	28,483	19,734	6,836	376	515	1,022	21,742	16,095	5,095	552
*Catahoula	7,704	5,209	1,820	41	91	543	6,051	4,090	1,349	29	68	515	5,619	4,170	1,401	48
*Concordia	12,015	8,296	3,166	104	181	268	9,221	6,398	2,430	86	121	186	7,484	5,589	1,757	138
*East Baton Rouge	1,120	875	198	6	11	30	885	699	149	5	10	22	903	749	130	24
East Feliciana	19,539	11,516	7,341	91	262	329	16,183	9,740	5,918	61	198	266	13,600	7,959	5,186	455
Franklin	19,774	12,492	6,802	70	205	205	15,028	9,901	4,779	44	153	151	13,159	9,015	4,034	110
*Richland	2,080	1,509	514	7	28	22	1,535	1,141	348	7	26	13	1,474	1,092	358	24
St. Helena	10,920	4,527	6,031	39	134	189	8,463	3,805	4,371	28	109	150	8,321	3,628	4,565	128
*West Feliciana	13,894	10,420	2,819	84	218	353	11,760	8,952	2,285	51	169	303	6,225	4,768	1,337	120
District 32	124,015	79,834	38,399	866	1,825	3,091	97,609	64,460	28,465	687	1,369	2,628	78,527	53,065	23,863	1,599
	100.000%	64.374%	30.963%	0.698%	1.472%	2.492%	100.000%	66.039%	29.162%	0.704%	1.403%	2.692%	80.451%	67.575%	30.388%	2.036%
District 33																
*Morehouse	9,968	7,665	1,881	62	219	141	8,023	6,224	1,481	40	161	117	7,139	5,593	1,413	133
*Ouachita	77,749	60,538	11,895	1,248	1,732	2,336	58,435	46,605	8,000	877	1,321	1,632	49,896	42,156	5,976	1,764
*Union	17,236	12,450	3,708	48	293	737	13,580	10,145	2,721	29	217	468	12,532	9,574	2,598	360
West Carroll	9,751	7,894	1,425	27	180	225	7,532	6,223	1,010	20	136	143	7,038	5,913	1,040	85
District 33	114,704	88,547	18,909	1,385	2,424	3,439	87,570	69,197	13,212	966	1,835	2,360	76,605	63,236	11,027	2,342
	100.000%	77.196%	16.485%	1.207%	2.113%	2.998%	100.000%	79.019%	15.087%	1.103%	2.095%	2.695%	87.479%	82.548%	14.395%	3.057%
District 34																
*Catahoula	1,202	567	575	5	28	27	900	467	387	4	19	23	848	469	369	10
*Concordia	6,672	1,979	4,559	18	52	64	4,996	1,710	3,183	14	46	43	4,480	1,633	2,783	64
East Carroll	7,459	2,054	5,272	29	43	61	5,901	1,773	4,043	19	27	39	4,709	1,306	3,359	44

Splits

Plan: 24RS-2145 (Jordan)

	Total Population	Total White	Total Black	Total Asian	Total American Indian	Total Other	VAP Total	VAP White	VAP Black	VAP Asian	VAP American Indian	VAP Other	Reg Total Dec 2021	Reg White Dec 2021	Reg Black Dec 2021	Reg Other Dec 2021
District 34																
Madison	10,017	3,475	6,363	20	59	100	7,435	2,906	4,391	9	48	81	7,278	2,494	4,674	110
*Morehouse	15,661	4,616	10,603	98	151	193	12,039	3,871	7,819	77	118	154	9,783	2,912	6,718	153
*Ouachita	51,080	8,348	40,136	848	364	1,384	37,592	7,437	27,971	720	274	1,190	31,091	4,695	25,371	1,025
*Richland	17,274	9,639	7,054	76	219	286	13,284	7,679	5,167	59	167	212	11,725	6,953	4,574	198
Tensas	4,147	1,744	2,312	23	26	42	3,235	1,446	1,728	12	23	26	3,455	1,503	1,917	35
District 34	113,512	32,422	76,874	1,117	942	2,157	85,382	27,289	54,689	914	722	1,768	73,369	21,965	49,765	1,639
	100.000%	28.563%	67.723%	0.984%	0.830%	1.900%	100.000%	31.961%	64.052%	1.070%	0.846%	2.071%	85.930%	29.938%	67.828%	2.234%
District 35																
Caldwell	9,645	7,646	1,632	51	150	166	7,478	5,969	1,224	46	116	123	6,031	5,124	818	89
*Grant	16,923	14,400	1,596	112	541	274	13,448	11,307	1,435	83	426	197	9,186	8,863	61	262
La Salle	14,791	11,348	1,422	283	372	1,366	11,563	8,636	1,065	264	271	1,327	8,792	7,978	637	177
*Ouachita	31,539	19,659	9,186	692	565	1,437	24,173	15,932	6,319	521	464	937	18,765	13,664	4,311	790
*Rapides	38,308	31,624	3,721	553	1,256	1,154	28,886	24,289	2,474	388	939	796	24,141	21,477	1,764	900
*Richland	689	637	35	0	11	6	564	518	31	0	10	5	463	425	29	9
*Winn	2,191	2,040	44	24	53	30	1,745	1,634	30	14	37	30	1,420	1,395	16	9
District 35	114,086	87,354	17,636	1,715	2,948	4,433	87,857	68,285	12,578	1,316	2,263	3,415	68,798	58,926	7,636	2,236
	100.000%	76.569%	15.459%	1.503%	2.584%	3.886%	100.000%	77.723%	14.316%	1.498%	2.576%	3.887%	78.307%	85.651%	11.099%	3.250%
District 36																
*Bossier	66,947	50,957	9,425	1,564	1,930	3,071	49,359	38,282	6,625	1,034	1,434	1,984	40,840	33,724	5,207	1,909
*Caddo	5,582	4,692	329	331	84	146	4,197	3,577	244	222	63	91	4,000	3,483	222	295
*Claiborne	5,512	3,100	2,129	27	84	172	4,678	2,751	1,700	14	57	156	2,523	1,448	1,038	37
Webster	36,967	22,735	12,679	208	687	658	28,753	18,144	9,464	154	558	433	22,737	14,938	7,339	460
District 36	115,008	81,484	24,562	2,130	2,785	4,047	86,987	62,754	18,033	1,424	2,112	2,664	70,100	53,593	13,806	2,701
	100.000%	70.851%	21.357%	1.852%	2.422%	3.519%	100.000%	72.142%	20.731%	1.637%	2.428%	3.063%	80.587%	76.452%	19.695%	3.853%
District 37																
*Bossier	41,764	17,312	17,899	1,335	830	4,388	30,997	14,479	11,911	990	656	2,961	17,418	9,110	6,946	1,362
*Caddo	72,122	19,790	48,152	1,137	885	2,158	54,830	16,947	34,782	883	718	1,500	42,734	13,306	27,394	2,034
District 37	113,886	37,102	66,051	2,472	1,715	6,546	85,827	31,426	46,693	1,873	1,374	4,461	60,152	22,416	34,340	3,396
	100.000%	32.578%	57.997%	2.171%	1.506%	5.748%	100.000%	36.616%	54.404%	2.182%	1.601%	5.198%	70.085%	37.266%	57.089%	5.646%
District 38																
*Bossier	13,796	9,397	2,678	538	391	792	10,472	7,421	1,823	388	299	541	8,130	6,054	1,424	652
*Caddo	52,657	40,168	7,633	1,718	1,249	1,889	41,542	32,396	5,545	1,258	974	1,369	35,631	29,460	4,224	1,947
De Soto	26,812	15,284	9,973	117	740	698	20,440	11,909	7,425	86	557	463	18,713	11,330	6,810	573
Sabine	22,155	15,036	3,861	94	2,723	441	17,064	12,054	2,655	66	1,970	319	14,547	11,023	2,184	1,340
District 38	115,420	79,885	24,145	2,467	5,103	3,820	89,518	63,780	17,448	1,798	3,800	2,692	77,021	57,867	14,642	4,512
	100.000%	69.212%	20.919%	2.137%	4.421%	3.310%	100.000%	71.248%	19.491%	2.009%	4.245%	3.007%	86.040%	75.131%	19.010%	5.858%

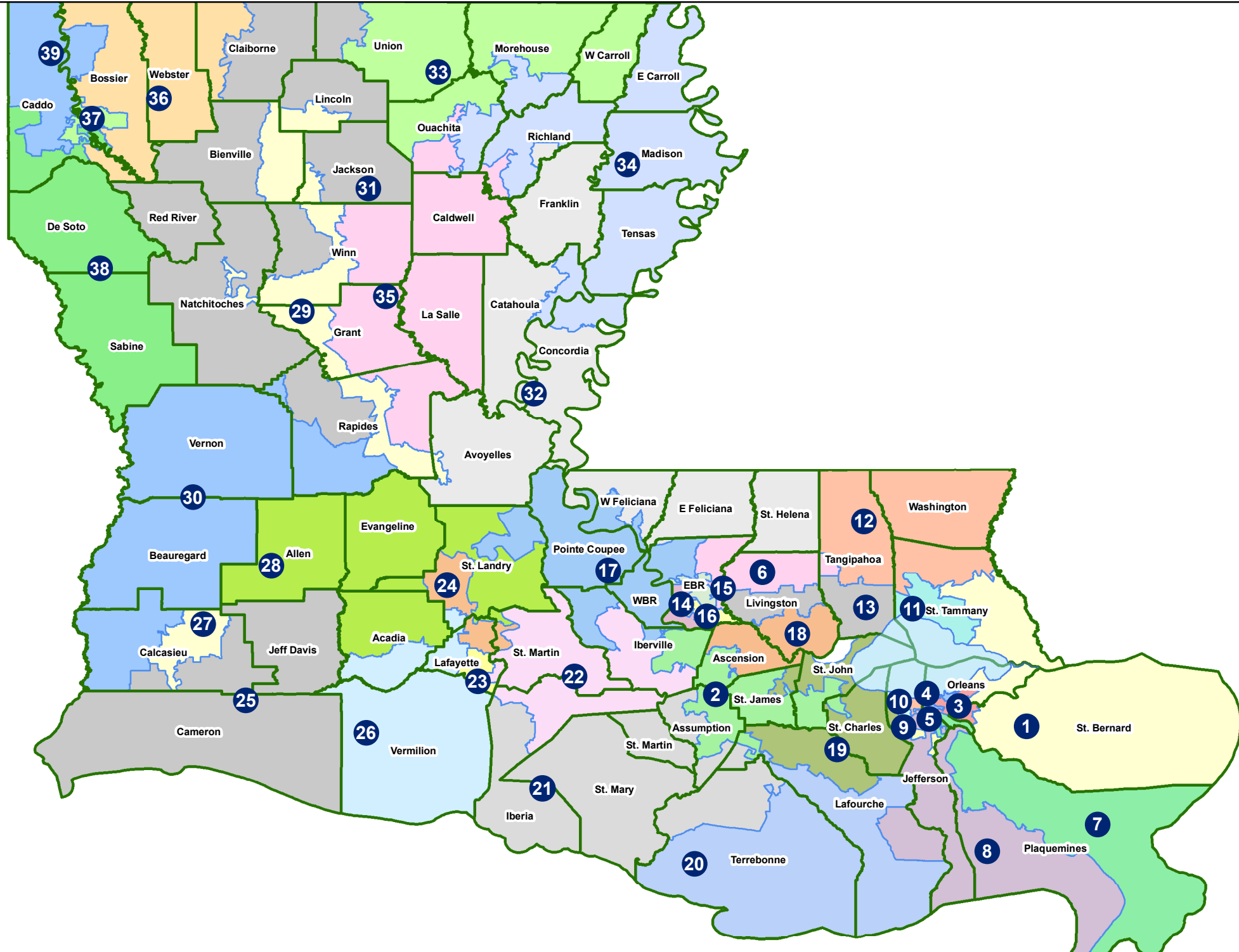
Splits

Plan: 24RS-2145 (Jordan)

	Total Population	Total White	Total Black	Total Asian	Total American Indian	Total Other	VAP Total	VAP White	VAP Black	VAP Asian	VAP American Indian	VAP Other	Reg Total Dec 2021	Reg White Dec 2021	Reg Black Dec 2021	Reg Other Dec 2021
District 39																
*Bossier	6,239	3,386	2,549	55	122	127	5,048	2,749	2,081	36	88	94	3,355	1,973	1,261	121
*Caddo	107,487	38,807	63,190	848	1,622	3,020	81,838	32,139	45,788	645	1,203	2,063	68,931	26,864	39,409	2,658
District 39	113,726	42,193	65,739	903	1,744	3,147	86,886	34,888	47,869	681	1,291	2,157	72,286	28,837	40,670	2,779
	100.000%	37.101%	57.805%	0.794%	1.534%	2.767%	100.000%	40.154%	55.094%	0.784%	1.486%	2.483%	83.196%	39.893%	56.263%	3.844%

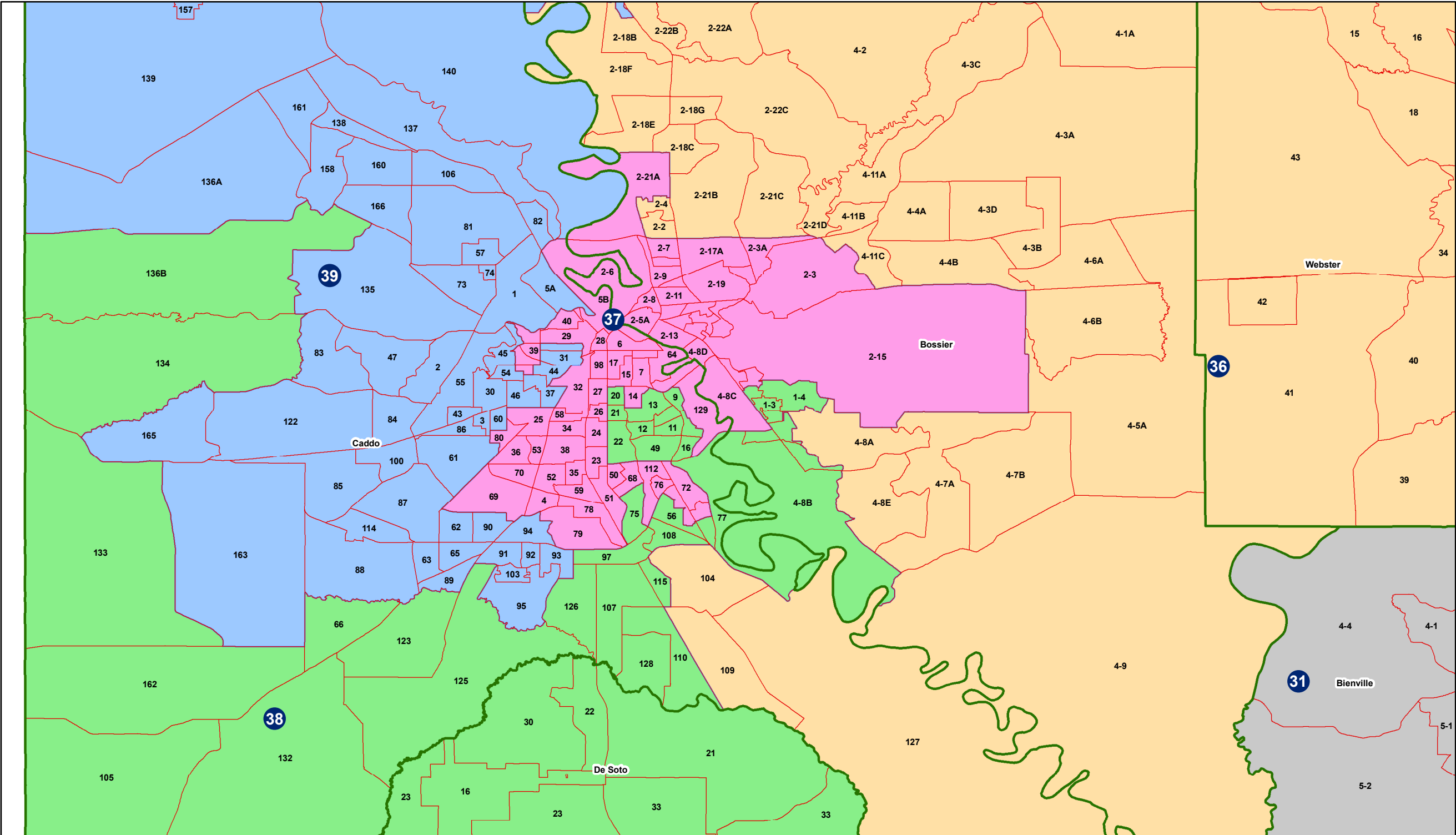
Senate - Statewide

HLS 24RS-2145 (Jordan)



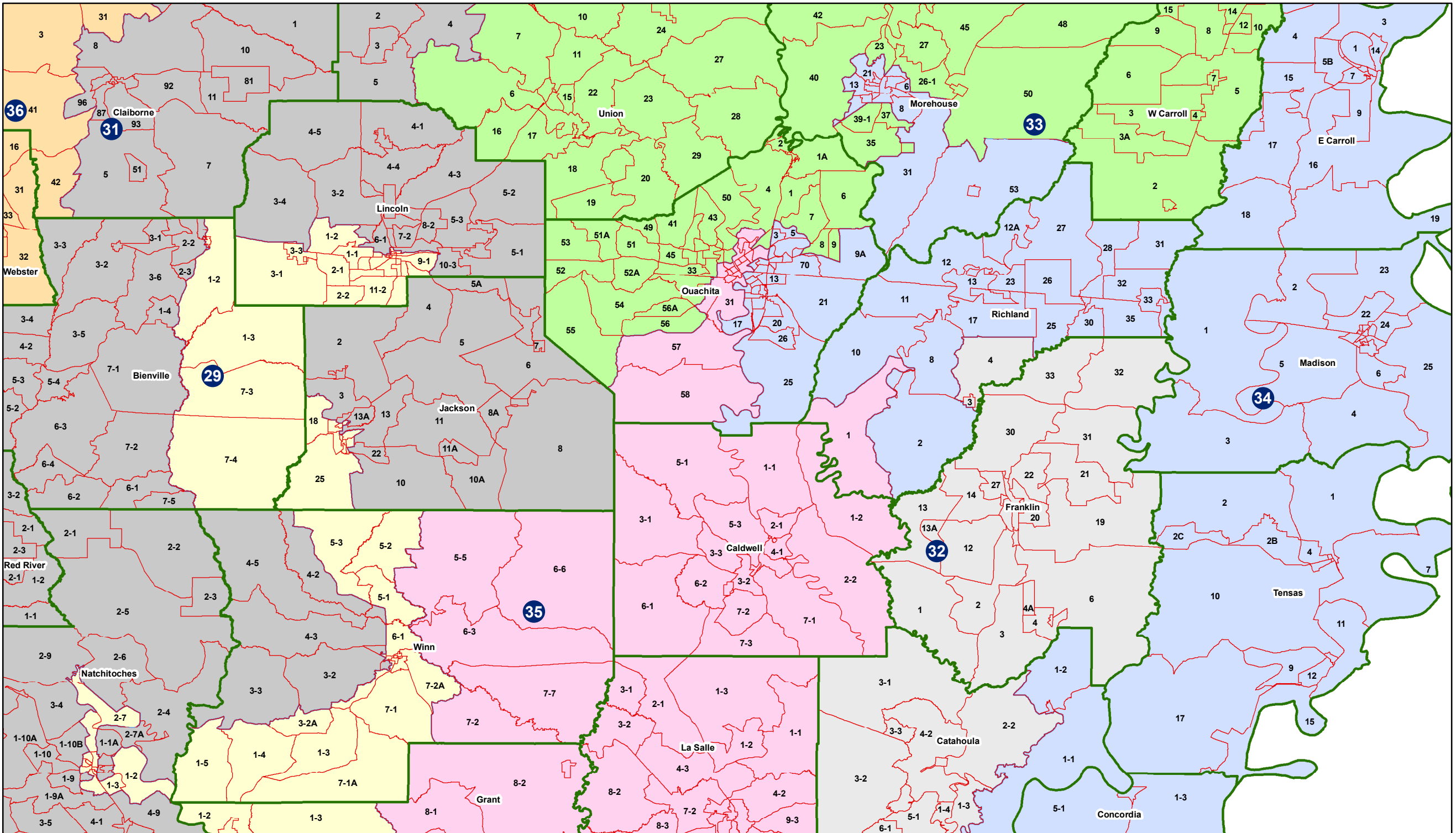
Senate - Shreveport

HLS 24RS-2145 (Jordan)



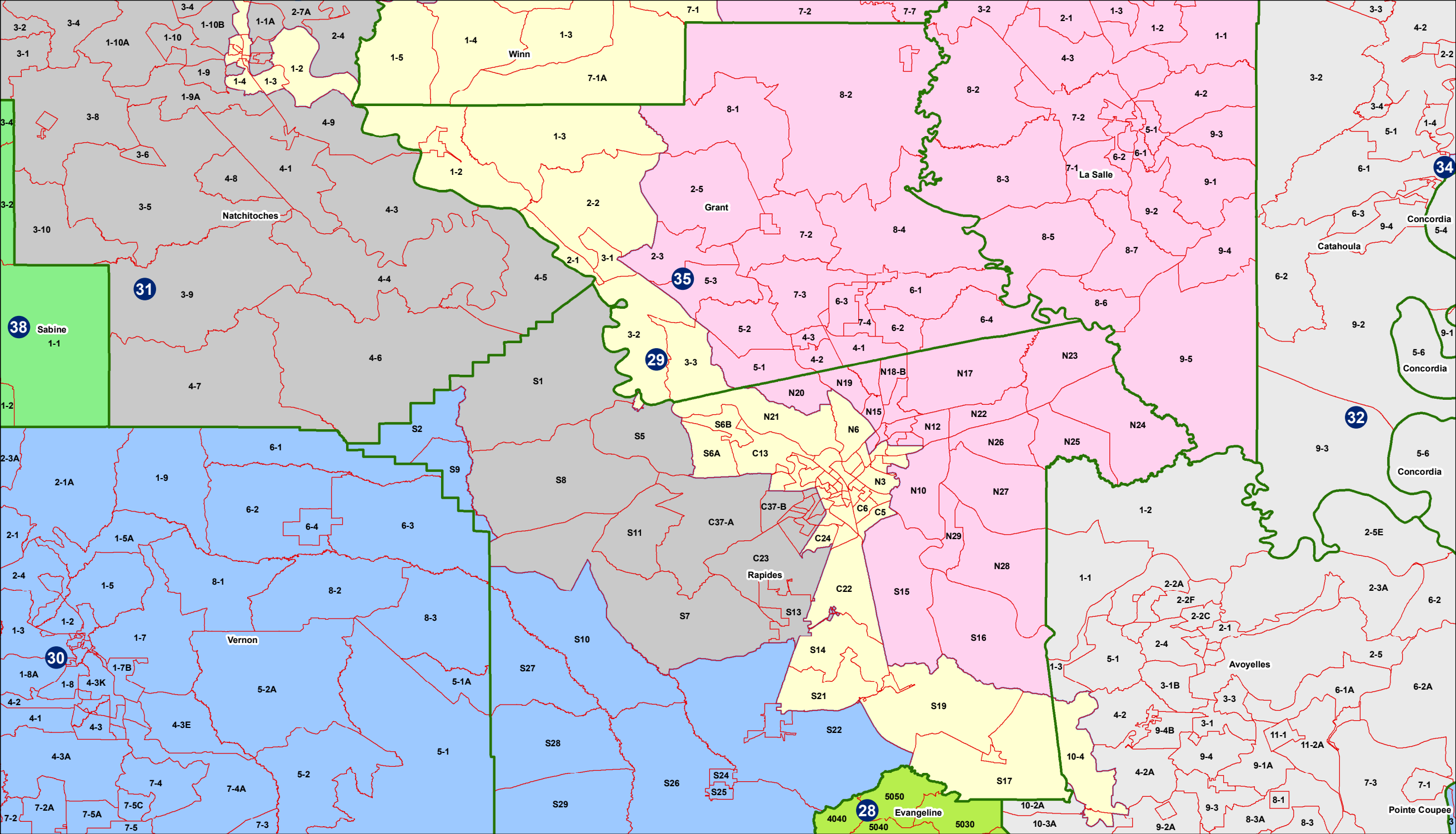
Senate - Northeast

HLS 24RS-2145 (Jordan)



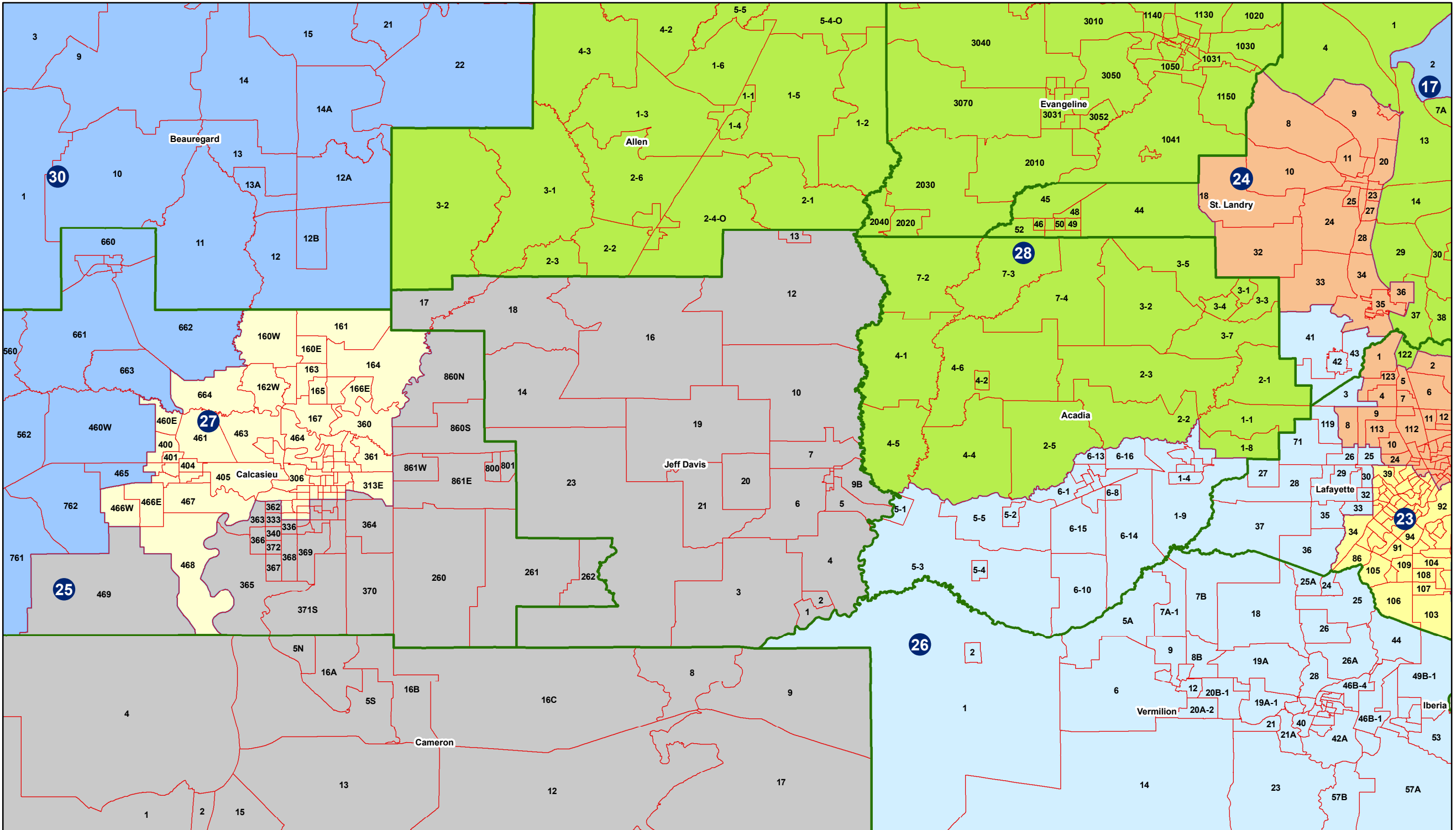
Senate - Central

HLS 24RS-2145 (Jordan)



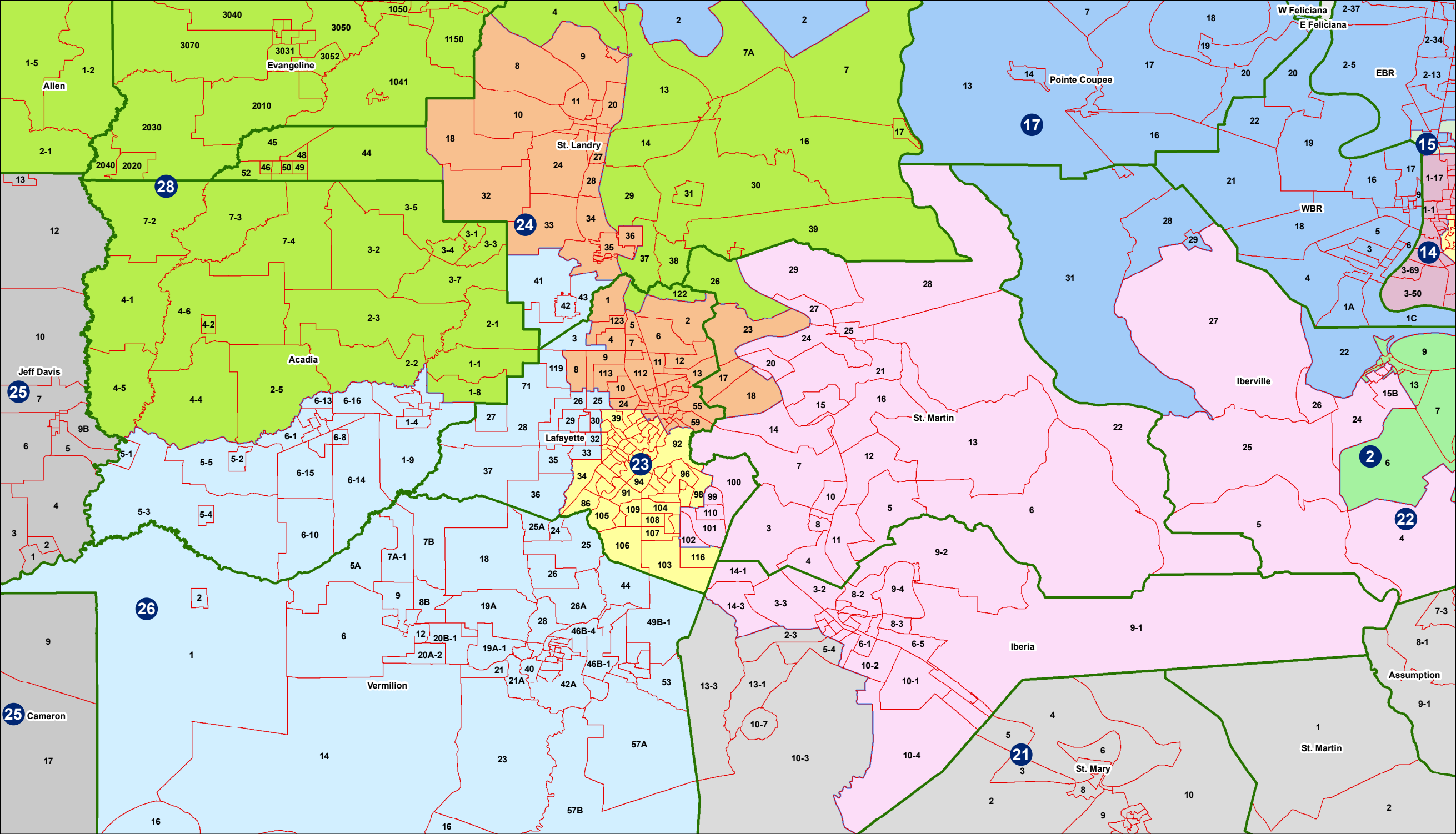
Senate - Southwest

HLS 24RS-2145 (Jordan)



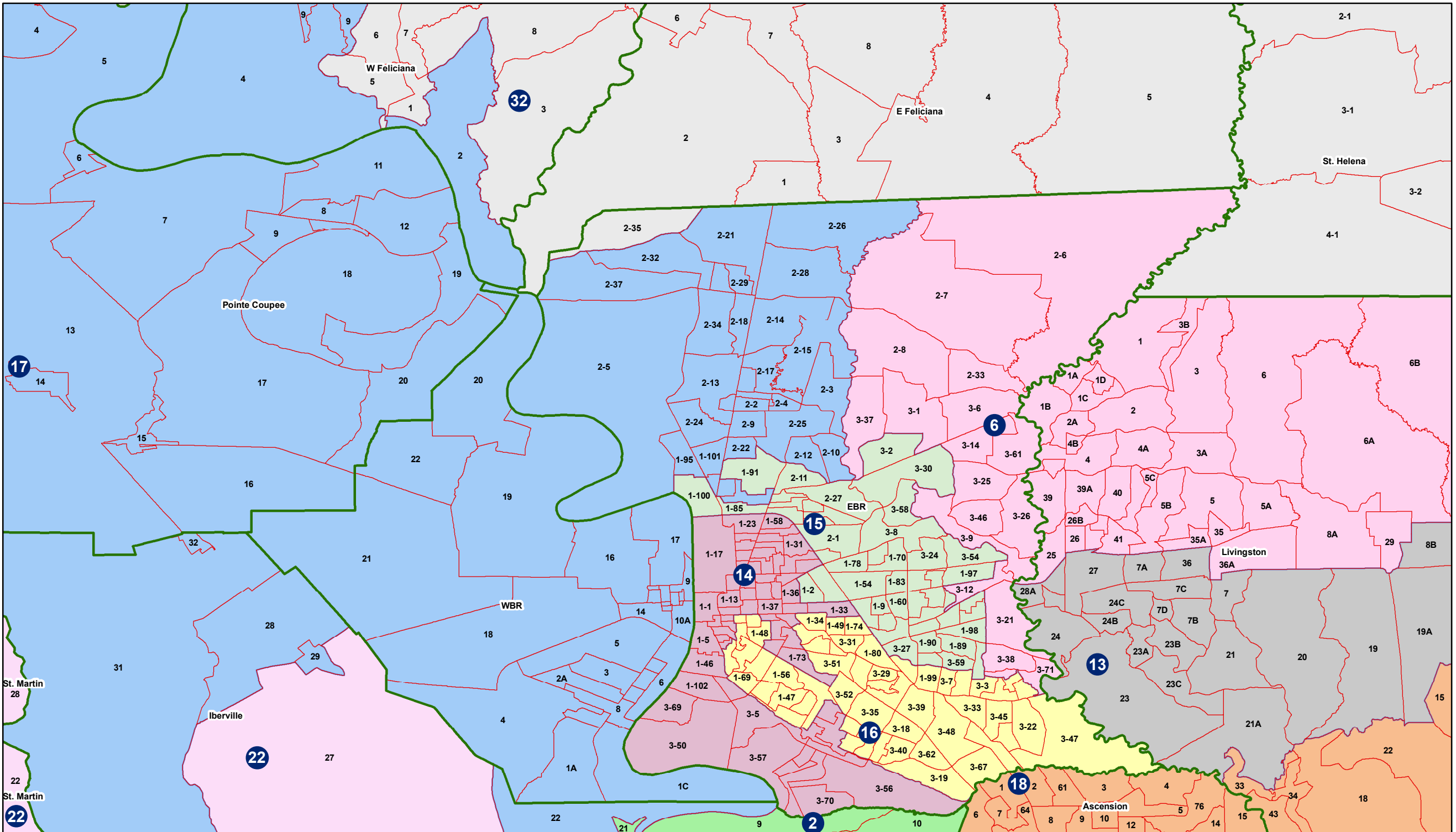
Senate - Acadiana

HLS 24RS-2145 (Jordan)



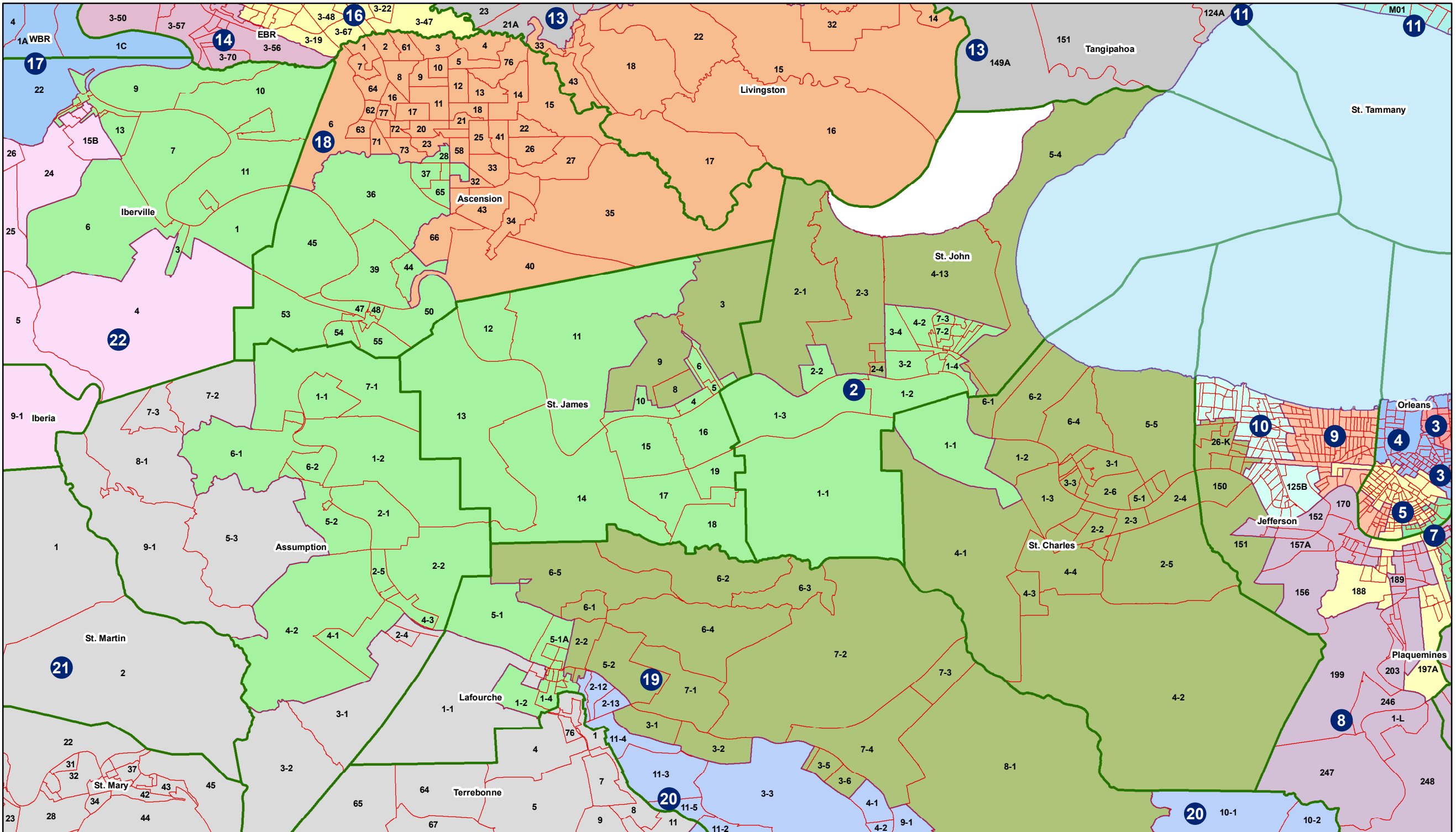
Senate - Greater Baton Rouge

HLS 24RS-2145 (Jordan)



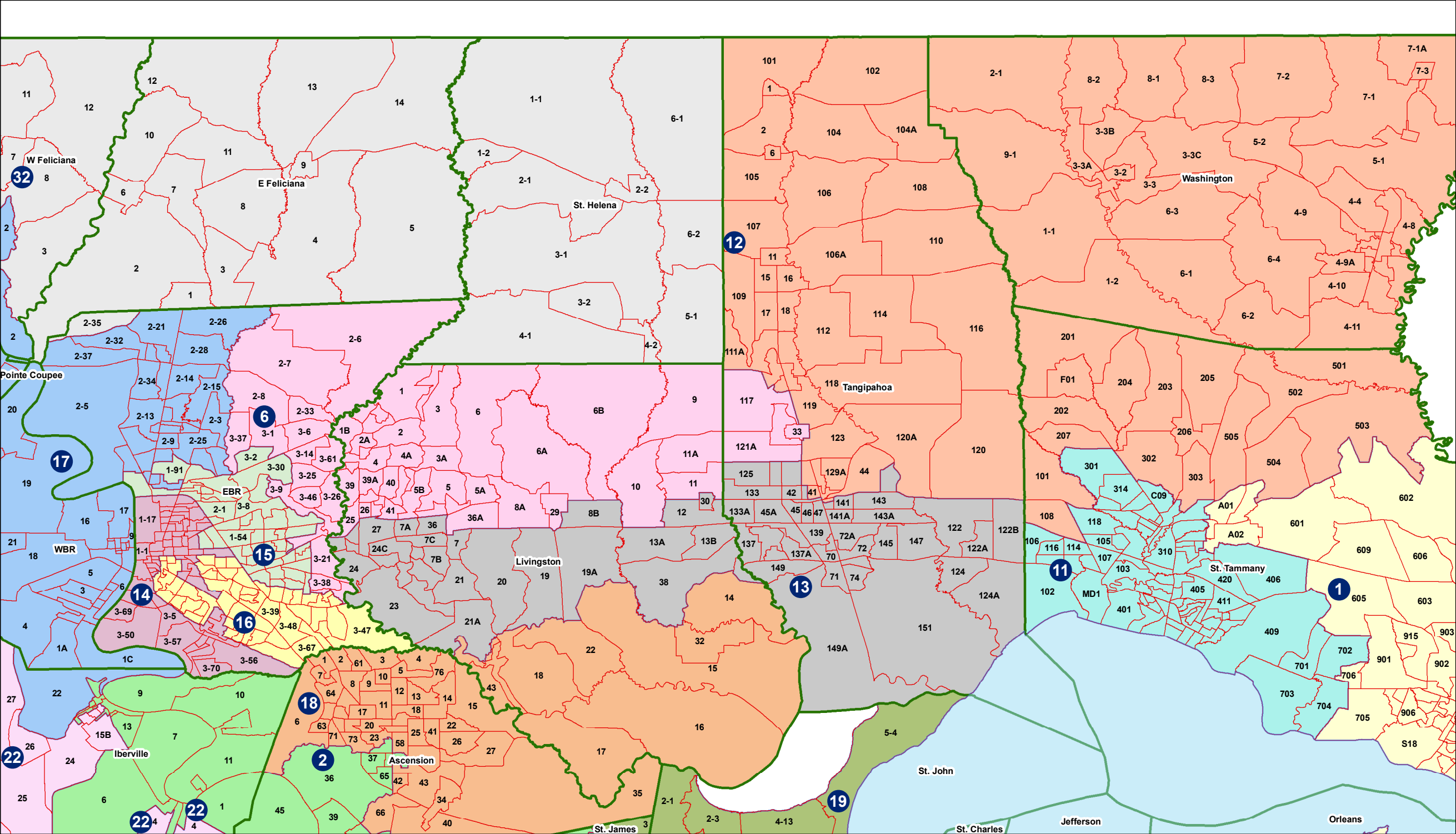
Senate - River Parishes

HLS 24RS-2145 (Jordan)



Senate - Florida Parishes

HLS 24RS-2145 (Jordan)



Senate - Greater New Orleans

HLS 24RS-2145 (Jordan)

