

First Extraordinary Session, 2011

SENATE BILL NO. 1

BY SENATOR CHAISSON

SENATE. Provides for the redistricting of the Louisiana Senate.

1
2
3
4
5
6
7
8
9
10
11
12
13
14
15
16
17

AN ACT

To enact R.S. 24:35 and to repeal R.S. 24:35.1, relative to legislative redistricting; to provide for the redistricting of the Senate of the Legislature of Louisiana; to provide for effective dates; and to provide for related matters.

Be it enacted by the Legislature of Louisiana:

Section 1. R.S. 24:35 is hereby enacted to read as follows:

§35. Membership of the Senate

(A)(1) District 1 is composed of Precincts 171, 172, 173, 174, 175, 179A, 179B, 180, 181, 182, 187, 188, 189, 200, 201, 210, 211, 212A (Part) that portion east of State Highway 3017 and north of Lapalco Blvd., 1-G and 2-G of Jefferson Parish; Precincts 6-1, 7-25A, 7-35, 7-37, 7-40, 8-1, 8-19, 8-20, 8-21, 8-22, 8-23, 8-24, 8-25, 8-26, 8-27, 9-1, 9-3, 9-3A, 9-4, 9-5, 9-5A, 9-6B, 9-6C, 9-6D, 9-6E, 9-6F, 9-7, 9-8, 9-8A, 9-9, 9-10, 9-11, 9-12, 9-13, 9-14, 9-15, 9-16, 9-25, 9-26, 9-28, 9-28C, 9-28E, 9-29, 9-30, 9-30A, 9-31, 9-31A, 9-31B, 9-32, 9-39, 9-39B, 9-40, 9-40A, 9-40C, 9-41, 9-41A, 9-41B, 9-41C, 9-41D, 9-43M, 9-44, 9-44I, 9-44L, 9-44M, 9-44N, 9-44P, 9-44Q, 9-45, 15-1 and 15-5 of Orleans Parish and Precincts 10, 11, 12, 13, 14, 15, 16, 20, 21, 22, 23, 24, 25, 30, 31, 32 and 40 of St.

1 **Bernard Parish.**

2 **(2) District 2 is composed of Precincts 3-14, 3-19, 3-20, 4-2, 4-5, 4-6, 4-7, 4-8, 4-9,**
3 **4-11, 4-14, 4-15, 4-17, 4-17A, 4-18, 4-20, 4-21, 4-22, 4-23, 5-1, 5-2, 5-3, 5-4, 5-8, 5-9, 5-10,**
4 **5-11, 5-12, 5-13, 5-15, 5-16, 5-17, 5-18, 6-2, 6-4, 6-7, 6-8, 6-9, 7-1, 7-2, 7-4, 7-5, 7-7, 7-8,**
5 **7-9A, 7-12, 7-15, 7-16, 7-17, 7-18, 7-19, 7-23, 7-24, 7-25, 7-26, 7-27, 7-27B, 7-28, 7-28A,**
6 **7-29, 7-30, 7-32, 7-33, 7-34, 7-37A, 7-41, 7-42, 8-2, 8-4, 8-6, 8-7, 8-8, 8-9, 8-12, 8-13, 8-14,**
7 **8-15, 8-28, 8-30, 9-17, 9-19, 9-21, 9-23, 9-31D, 9-33, 9-34A, 9-35, 9-35A, 9-36, 9-36B,**
8 **9-37, 9-38, 9-38A, 9-42, 9-42C, 9-43A, 9-43B, 9-43C, 9-43E, 9-43F, 9-43G, 9-43H, 9-43I,**
9 **9-43J, 9-43K, 9-43L, 9-43N, 9-44A, 9-44B, 9-44D, 9-44E, 9-44F, 9-44G, 9-44J, 9-44O,**
10 **17-17, 17-18, 17-18A, 17-19 and 17-20 of Orleans Parish.**

11 **(3) District 3 is composed of Precincts 107, 131 and 133 of Jefferson Parish and**
12 **Precincts 1-1, 1-2, 1-5, 1-6, 2-1, 2-2, 2-3, 2-4, 2-6, 2-6A, 2-7, 3-1, 3-3, 3-5, 3-8, 3-9, 3-12,**
13 **3-15, 3-18, 4-3, 4-4, 5-5, 5-7, 6-6, 7-6, 7-10, 7-11, 7-13, 7-14, 7-20, 7-21, 10-3, 10-6, 10-7,**
14 **10-8, 10-9, 10-11, 10-12, 10-13, 10-14, 11-2, 11-3, 11-4, 11-5, 11-8, 11-9, 11-10, 11-11,**
15 **11-12, 11-13, 11-14, 11-17, 12-1, 12-2, 12-3, 12-4, 12-5, 12-6, 12-7, 12-8, 12-9, 12-10,**
16 **12-11, 12-12, 12-13, 12-14, 12-16, 12-17, 12-19, 13-1, 13-2, 13-3, 13-4, 13-5, 13-6, 13-7,**
17 **13-8, 13-9, 13-10, 13-11, 13-12, 13-13, 13-14, 13-15, 13-16, 14-12, 14-13A, 14-17, 14-18A,**
18 **14-19, 14-20, 14-21, 14-23, 14-24A, 14-25, 14-26, 16-2, 16-3, 16-4, 16-5, 16-6, 16-7, 16-8,**
19 **16-9, 17-2, 17-3, 17-4, 17-5, 17-6, 17-7, 17-8, 17-9, 17-10, 17-11, 17-12, 17-13, 17-13A,**
20 **17-14, 17-15 and 17-16 of Orleans Parish.**

21 **(4) District 4 is composed of Precincts 195, 196, 197A, 197B, 197C, 205, 212B,**
22 **213A, 213B, 213C, 214A, 214B, 216A, 225, 226, 232A, 232B, 3-G, 4-G, 5-G, 6-G, 7-G,**
23 **8-G, 9-G, 10-G, 11-G, 12-G and 13-G of Jefferson Parish; Precincts 15-2, 15-3, 15-6,**
24 **15-8, 15-9, 15-10, 15-11, 15-12, 15-12A, 15-13, 15-13A, 15-13B, 15-14, 15-14A, 15-14B,**
25 **15-14C, 15-14D, 15-14E, 15-14F, 15-14G, 15-15, 15-15A, 15-15B, 15-16, 15-17, 15-17A,**
26 **15-17B, 15-18, 15-18A, 15-18B, 15-18C, 15-18D, 15-18E, 15-18F, 15-19, 15-19B and**
27 **15-19C of Orleans Parish and Precincts 2-1, 3-1, 4-1 and 5-2 of Plaquemines Parish.**

28 **(5) District 5 is composed of Precincts 150, 151, 152, 153, 154, 155, 156, 157A,**
29 **157B, 170, 176, 177, 178, 183, 184, 185A, 185B, 190, 191, 192, 193, 194A, 194B, 198, 199,**

1 202, 203, 204, 212A (Part) that portion west of State Highway 3017 and south of
 2 Lapalco Blvd., 215, 216B, 217, 227, 228, 229, 230, 231, 234, 235, 236, 237, 238, 246, 247,
 3 248, 1-GI, 1-L, 1-W, 2-W, 3-W, 4-W, 5-W, 6-W and 7-W of Jefferson Parish and
 4 Precincts 5-1, 6-1, 6-2, 6-3, 6-4, 7-1, 7-3, 8-1, 9-1 and 9-3 of Plaquemines Parish.

5 (6) District 6 is composed of Precincts 18, 19, 20, 22, 23, 24, 25, 26, 27, 28, 29,
 6 30, 31, 32, 33, 34, 35, 36, 37, 38, 39, 40, 41, 42, 43, 44, 45, 46, 59, 60, 66, 69, 70, 71, 72, 73,
 7 74, 75, 76, 77, 78, 79, 80, 81, 82, 83, 84, 85, 86, 87, 88, 89, 90, 91, 92, 93, 94, 95, 96, 97, 98,
 8 99, 100, 101, 102, 103, 105, 106, 125, 126, 127, 128, 129, 130, 132, 134, 136 and 138 of
 9 Jefferson Parish and Precincts 14-1, 14-2, 14-3, 14-4, 14-5, 14-6, 14-7, 14-8, 14-9, 14-10,
 10 14-11, 14-14, 14-15, 14-16, 16-1, 16-1A and 17-1 of Orleans Parish.

11 (7) District 7 is composed of Precincts 1, 2, 3, 4, 5, 7, 8, 9, 10, 11, 12, 13, 14, 15,
 12 16, 17, 21, 51, 52, 53, 54, 55, 56, 57, 58, 61, 62, 63, 64, 65, 67, 68, 117, 118, 119, 120, 121,
 13 122, 123, 124, 1-H, 2-H, 3-H, 4-H, 5-H, 6-H, 7-H, 8-H, 9-H, 1-K, 2-K, 3-K, 4-K, 5-K,
 14 6-K, 7-K, 8-K, 9-K, 10-K, 11-K, 12-K, 13-KA, 14-K, 15-K, 16-K, 17-K, 18-K, 19-K,
 15 20-K, 25-K, 26-K (Part) that portion northeast of Illinois Central Railroad, 27-K, 28-K,
 16 29-K, 30-K, 34-K and 35-K of Jefferson Parish.

17 (8) District 8 is composed of Precincts 9-45A and 15-19A of Orleans Parish;
 18 Precincts 1-1, 1-2, 1-3 and 1-4 of Plaquemines Parish; Precincts 33, 34, 41, 42, 43, 44,
 19 45, 46, 50, 51, 52, 53, 54, 55, 56, 57 and 58 of St. Bernard Parish and Precincts 601, 602,
 20 603, 604, 606, 705, 706, 801, 802, 803, 804, 805, 806, 807, 808, 809, 810, 811, 812, 813,
 21 814, 815, 816, 817, 901, 902, 903, 904, 905, 906, 907, 908, 909, 910, 911, 912, 913, 914,
 22 915, 916, 917, 918, 921, P01, S01, S02, S03, S04, S05, S06, S07, S08, S09, S10, S11, S12,
 23 S13, S15, S16, S17, S18, S19, S21, S22, S23, S24 and S25 of St. Tammany Parish.

24 (9) District 9 is composed of Precincts 101, 102, 103, 104, 105, 106, 107, 304, 305,
 25 306, 307, 308, 309, 310, 311, 312, 313, 401, 402, 403, 404, 405, 406, 407, 408, 409, 410,
 26 411, 412, 413, 414, 415, 416, 417, 418, 419, 420, 421, 422, 423, 424, 426, 427, 605, 607,
 27 701, 702, 703, 704, A01, A02, A03, A04, C01, C02, C03, C04, C05, C06, C07, C08, C09,
 28 C10, C11, M01, M02, M03, M04, M05, M06, M07, M08, M09, M10 and MD1 of St.
 29 Tammany Parish and Precincts 120, 120B, 122, 122A, 124, 141A, 143 and 145 of

Tangipahoa Parish.

(10) District 10 is composed of Precincts 201, 202, 203, 204, 205, 206, 207, 301, 302, 303, 501, 502, 503, 504, 505 and F01 of St. Tammany Parish; Precincts 1, 2, 6, 11, 15, 16, 17, 18, 26, 27, 27A, 28, 28A, 33, 101, 102, 103, 104, 104A, 105, 106, 106A, 106B, 107, 108, 109, 109A, 110, 111, 111A, 112, 114, 115B, 116, 117, 118, 119, 120A, 121, 121A, 121B, 123, 129 and 129A of Tangipahoa Parish and Washington Parish.

(11) District 11 is composed of Precincts 1-89, 1-98, 3-3, 3-10, 3-12, 3-15, 3-16, 3-21, 3-22, 3-28, 3-32, 3-33, 3-34, 3-38, 3-43, 3-45, 3-47 and 3-53 of East Baton Rouge Parish; Precincts 7, 7B, 13A, 13B, 19, 20, 23, 23A and 23B of Livingston Parish and Precincts 40, 40A, 41, 42, 42A, 43, 44, 45, 45A, 46, 47, 48, 49, 70, 70A, 71, 72, 72A, 73, 74, 125, 127, 127A, 133, 133A, 137, 137A, 137B, 137C, 137D, 139, 141 and 149 of Tangipahoa Parish.

(12) District 12 is composed of Precincts 3-1, 3-2, 3-6, 3-9, 3-14, 3-25, 3-26, 3-30 and 3-46 of East Baton Rouge Parish and Precincts 1, 1A, 1B, 1C, 1D, 2, 2A, 3, 3A, 4, 4A, 5, 5A, 5B, 6, 6A, 6B, 7A, 8A, 8B, 9, 10, 11, 11A, 12, 24, 24A, 24B, 24C, 24D, 25, 26, 26A, 26B, 26C, 27, 28A, 28B, 29, 30, 35, 35A, 36, 36A, 39, 39A, 40, 40A and 41 of Livingston Parish.

(13) District 13 is composed of Precincts 1-2, 1-54, 1-55, 1-60, 1-70, 1-71, 1-77, 1-78, 1-81, 1-82, 1-83, 1-84, 1-86, 1-87, 1-88, 1-91, 1-92, 1-93, 1-94, 1-95, 1-97, 1-101, 1-104, 2-1, 2-2, 2-3, 2-4, 2-5, 2-9, 2-10, 2-11, 2-12, 2-13, 2-14, 2-15, 2-16, 2-17, 2-18, 2-19, 2-20, 2-22, 2-23, 2-24, 2-25, 2-27, 2-28, 2-30, 2-31, 3-8, 3-24, 3-42 and 3-54 of East Baton Rouge Parish.

(14) District 14 is composed of Precincts 1-1, 1-3, 1-4, 1-5, 1-6, 1-7, 1-10, 1-13, 1-14, 1-15, 1-16, 1-17, 1-18, 1-19, 1-21, 1-22, 1-23, 1-24, 1-25, 1-26, 1-27, 1-28, 1-29, 1-30, 1-31, 1-32, 1-36, 1-37, 1-38, 1-39, 1-40, 1-45, 1-46, 1-50, 1-51, 1-57, 1-58, 1-59, 1-61, 1-62, 1-63, 1-64, 1-65, 1-67, 1-68, 1-73, 1-85, 1-100, 1-102, 1-107, 3-5, 3-20, 3-23, 3-44, 3-50 and 3-55 of East Baton Rouge Parish.

(15) District 15 is composed of Precincts 1-8, 1-9, 1-12, 1-33, 1-34, 1-35, 1-41, 1-42, 1-43, 1-44, 1-47, 1-48, 1-49, 1-52, 1-53, 1-56, 1-66, 1-69, 1-72, 1-74, 1-75, 1-80, 1-90,

1 1-99, 1-103, 1-105, 3-4, 3-7, 3-11, 3-13, 3-17, 3-18, 3-19, 3-27, 3-29, 3-31, 3-35, 3-36, 3-39,
2 3-40, 3-41, 3-48, 3-49, 3-51 and 3-52 of East Baton Rouge Parish.

3 (16) District 16 is composed of Precincts 30, 36, 37, 39, 42, 44, 45, 47, 48, 49, 50,
4 51, 52, 53, 54, 55, 56, 57 and 60 of Ascension Parish; Precincts 1-1, 1-2, 2-1, 2-2, 4-1, 4-2,
5 5-1, 5-2, 6-2 and 7-1 of Assumption Parish; Precincts 1, 7, 8, 10, 11, 12, 13, 13B, 13C,
6 14A, 19A, 20, 22 (Part) that portion east of State Highway 1 of Iberville Parish;
7 Precincts 1-2, 1-3, 1-4, 2-1, 2-1A, 2-3, 2-3A, 2-4, 2-4A, 2-5, 2-7, 2-9, 2-10, 5-1, 5-1A and
8 5-1B of Lafourche Parish; Precincts 2, 3, 4, 5, 6, 7, 7-A, 12, 13, 14, 15, 15B, 16, 17, 17-A
9 and 18 of St. James Parish; Precincts 1-2, 1-3, 1-4, 1-5, 2-1, 2-2, 2-3, 2-4, 3-1, 3-2, 3-3,
10 3-4, 4-1, 4-3 and 4-9 of St. John the Baptist Parish and Precincts 1-1, 2-1A, 3-1A, 3-1B,
11 3-2, 4-2, 4-3A, 4-3B, 4-4, 4-5 and 5-1 of West Baton Rouge Parish.

12 (17) District 17 is composed of Precincts 2-3, 3-1, 3-2, 5-3, 5-4, 6-1, 7-2, 8-1 and
13 9-1 of Assumption Parish; Precincts 2-6, 2-7, 2-8, 2-21, 2-26, 2-29, 2-32 and 3-37 of East
14 Baton Rouge Parish; East Feliciana Parish; Precincts 2, 3, 4, 5, 6, 6A, 13A, 14, 14B, 15,
15 15A, 15B, 16, 17, 17A, 18, 19, 21, 22 (Part) that portion west of State Highway 1, 23, 24,
16 25, 25A, 25B, 26, 26A, 27, 28, 29, 30, 31 and 32 of Iberville Parish; Pointe Coupee
17 Parish; St. Helena Parish; Precincts 1-2 and 1-5 of St. Martin Parish and Precincts
18 2-1B, 2-2, 2-3, 4-1, 6-1, 6-2, 7-1, 7-2, 7-3 and 7-4 of West Baton Rouge Parish.

19 (18) District 18 is composed of Precincts 1, 2, 3, 4, 5, 6, 7, 8, 9, 10, 11, 12, 13, 14,
20 15, 16, 17, 18, 19, 20, 21, 22, 23, 24, 25, 26, 27, 28, 31, 32, 33, 34, 35, 40, 41, 43, 58 and
21 61 of Ascension Parish; Precincts 14, 15, 16, 17, 18, 21, 22, 31, 32, 33, 34, 38 and 43 of
22 Livingston Parish and Precincts 8, 8-A, 9, 10 and 11 of St. James Parish.

23 (19) District 19 is composed of Precincts 104, 108, 115, 116, 13-KB, 21-K, 22-K,
24 23-K, 24-K, 26-K (Part) that portion southwest of Illinois Central Railroad, 31-K and
25 33-K of Jefferson Parish; Precincts 3-1, 3-2, 3-3, 3-4, 3-5, 3-6, 4-1, 6-3, 7-1, 7-2, 7-3 and
26 7-4 of Lafourche Parish; St. Charles Parish; Precincts 1-1, 4-2, 4-4, 4-8, 5-1, 5-2, 5-3,
27 5-4, 5-5, 5-6, 5-7, 6-1, 6-3, 6-4, 7-2, 7-3, 7-4, 7-5 and 7-7 of St. John the Baptist Parish
28 and Precincts 149A and 151 of Tangipahoa Parish.

29 (20) District 20 is composed of Precincts 2-12, 2-13, 2-14, 4-2, 4-3, 4-4, 4-5, 4-6,

1 8-1, 9-1, 9-2, 10-1, 10-2, 10-3, 10-4, 10-5, 10-6, 10-7, 10-8, 10-9, 10-10, 10-11, 10-12,
 2 10-13, 10-14, 10-15, 10-16, 11-1, 11-2, 11-3 and 11-4 of Lafourche Parish and Precincts
 3 14, 19, 20, 21, 23, 24, 25, 27, 28, 29, 31, 32, 33, 34, 35, 36, 38, 40, 41, 42, 43, 44, 45, 46, 47,
 4 48, 49, 52, 53, 54, 55, 56, 57, 58, 59, 60, 61, 62, 63, 68, 70, 71, 72, 73, 78, 80, 82, 83, 88 and
 5 89 of Terrebonne Parish.

6 (21) District 21 is composed of Precincts 6-3, 11-1, 11-2, 11-3, 11-4, 11-5, 12-1,
 7 12-2 and 12-3 of Iberia Parish; Precincts 1-1, 2-2, 2-6, 2-8, 2-11, 5-2, 6-1, 6-2 and 6-4 of
 8 Lafourche Parish; St. Mary Parish and Precincts 1, 4, 5, 7, 8, 9, 10, 11, 12, 13, 15, 17,
 9 18, 51, 64, 65, 66, 67, 69, 74, 76, 81, 84, 85, 86, 87 and 90 of Terrebonne Parish.

10 (22) District 22 is composed of Precincts 1-1, 1-2, 1-3, 2-1, 2-2, 2-3, 3-1, 3-2, 3-3,
 11 3-4, 4-1, 4-2, 4-3, 4-4, 5-1, 5-2, 5-3, 5-4, 5-5, 6-1, 6-2, 6-4, 7-1, 7-2, 7-3, 7-4, 7-5, 8-1, 8-2,
 12 8-4, 8-5, 9-1, 9-2, 9-3, 9-4, 9-5, 10-2, 10-3, 10-4, 10-5, 10-6, 10-7, 12-4, 13-1, 13-2, 13-3,
 13 13-4, 14-1, 14-3 and 14-4 of Iberia Parish; Precincts 99 and 100 of Lafayette Parish;
 14 Precincts 3-1, 3-3, 3-5, 4-5, 4-7, 4-12 and 4-13 of St. Landry Parish and Precincts 1-1,
 15 1-3, 1-4, 1-7, 2-1, 2-2, 2-3, 2-4, 3-1, 3-1A, 3-1B, 3-2, 3-3, 3-4, 3-4A, 3-5, 3-6, 3-9, 4-1,
 16 4-1A, 4-2, 4-3, 4-4, 4-4A, 4-5, 4-6, 5-1, 5-2, 5-3, 5-4, 6-1, 6-2, 6-3, 6-3A, 6-3B, 6-4, 7-1A,
 17 7-2A, 7-4, 7-4A, 8-1, 8-3, 8-4, 8-4A, 9-1, 9-2, 9-3, 9-4 and 9-5 of St. Martin Parish.

18 (23) District 23 is composed of Precincts 10, 25, 30A, 33, 38, 39, 40, 41, 42, 43,
 19 44, 45, 46, 47, 48, 49, 60, 65, 66, 67, 69, 70, 72, 73, 74, 75, 76, 77, 78, 79, 80, 81, 82, 83, 84,
 20 85, 86, 87, 88, 89, 90, 91, 92, 93, 94, 95, 96, 97A, 97B, 98, 101, 102, 103, 104, 105, 106,
 21 107, 108, 109, 110 and 111 of Lafayette Parish.

22 (24) District 24 is composed of Precincts 2, 4, 5, 6, 7, 9, 11, 12, 13, 14, 15, 16, 17,
 23 18, 19, 20, 21, 22, 23, 24, 50, 51, 52, 53, 54, 55, 56, 57, 58, 59, 61, 62, 63, 64 and 68 of
 24 Lafayette Parish; Precincts 1-1, 1-2, 1-2A, 1-3, 1-3A, 1-4, 1-4A, 1-6, 1-7, 1-8, 1-9, 1-10,
 25 1-11, 1-12, 1-13, 1-14, 1-15, 1-15A, 1-16, 1-17, 1-18, 1-20, 1-21, 1-22, 1-23, 1-25, 1-26,
 26 1-26A, 1-28, 1-28A, 1-29, 2-1, 2-4, 3-2, 3-4, 3-6, 4-2, 4-3, 4-4, 4-6, 4-8, 4-9, 4-10, 4-11,
 27 4-12A, 5-3, 5-6 (Part) except that portion north of State Highway 103 and west of
 28 Interstate Highway 49, 6-1, 6-3, 6-4, 6-10, 6-11A, 6-15 and 6-16 of St. Landry Parish
 29 and Precincts 6-2A, 7-1 and 7-3 of St. Martin Parish.

1 (25) District 25 is composed of Precincts 1-1, 2-2, 2-3, 2-4, 2-5, 3-2, 3-5, 4-1, 4-2,
2 4-3, 4-4, 4-5, 4-6, 5-1A, 5-1B, 5-2A, 5-2B, 5-3, 5-4, 5-5, 6-1, 6-2, 6-3A, 6-3B, 6-4, 6-5, 6-6,
3 6-7, 6-8, 6-9, 6-10, 6-11, 6-12, 6-13, 6-14, 6-15, 6-16, 7-2, 7-3 and 7-4 of Acadia Parish;
4 Precincts 260, 261, 262, 333, 336, 337, 338, 339, 362, 364, 365, 366, 367N, 367S, 368, 369,
5 370, 371N, 371S, 800, 801, 861E and 861W of Calcasieu Parish; Cameron Parish and
6 Jefferson Davis Parish.

7 (26) District 26 is composed of Precincts 1-2A, 1-2B, 1-3A, 1-3B, 1-4A, 1-4B,
8 1-5A, 1-5B, 1-6, 1-7, 1-8, 1-9, 2-1, 3-1, 3-3A, 3-3B, 3-4, 3-6 and 3-7 of Acadia Parish;
9 Precincts 1, 3, 8, 26, 27, 28A, 28B, 29, 31, 32, 34, 35, 36, 37 and 71 of Lafayette Parish;
10 Precincts 2-2, 2-3, 2-5, 2-6, 2-7, 2-8 and 2-9 of St. Landry Parish and Vermilion Parish.

11 (27) District 27 is composed of Precincts 162E, 162W, 163, 164, 165, 166, 167,
12 300, 301, 302, 303, 304, 305, 306, 307, 308, 309E, 309W, 310, 311, 312, 313E, 313W, 314,
13 315E, 315W, 316E, 316W, 317, 318, 319, 320, 321, 322, 323, 324, 325, 326, 327, 328, 329,
14 330, 331, 332N, 332S, 334, 335, 360, 361, 363, 400, 401, 402, 403, 404, 405, 406, 407, 408,
15 440, 441, 461, 462, 463, 464, 467, 664, 860N and 860S of Calcasieu Parish.

16 (28) District 28 is composed of Allen Parish; Precincts 2-1A, 2-2B, 2-2C, 2-4A,
17 2-4B, 2-4D, 2-5A, 2-5B, 2-5C, 2-7, 2-8, 3-1A, 3-1B, 3-1C, 3-3A, 3-3D, 4-1, 4-2, 5-1, 5-2,
18 6-1A, 7-1, 7-2, 7-3, 7-3A, 8-1, 8-2A, 8-2B, 8-3A, 9-1A, 9-1C, 9-2, 9-3A, 9-4A, 9-5C, 9-6A,
19 9-6B, 10-2B, 10-2C, 10-3A, 10-3D, 10-4, 10-5C, 11-1 and 11-2A of Avoyelles Parish;
20 Evangeline Parish; Precincts 1-5, 1-19, 1-24, 5-1, 5-2, 5-4, 5-5, 5-6 (Part) that portion
21 north of State Highway 103 and west of Interstate Highway 49, 5-8, 6-2, 6-5, 6-6, 6-7,
22 6-8, 6-9, 6-11, 6-13, 6-14 and 6-16A of St. Landry Parish.

23 (29) District 29 is composed of Precincts 1-1, 1-2, 1-3, 2-1, 2-2, 3-1, 7-1, 7-2, 7-3
24 and 7-4 of Bienville Parish; Precincts 1-1, 1-2, 1-3, 2-1, 2-2, 3-1, 3-2 and 3-3 of Grant
25 Parish; Precincts 1, 2, 3, 16, 17, 17A, 18, 19, 19A, 19B, 20, 20A and 25 of Jackson
26 Parish; Precincts 1-1, 1-2, 1-3, 2-1, 2-2, 3-1, 9-1, 10-1, 10-3, 10-5, 11-1, 11-2, 11-3 and
27 12-1 of Lincoln Parish; Precincts 1-3, 1-4, 1-4A, 1-4B, 1-5, 1-13 and 4-9 of Natchitoches
28 Parish; Precincts C1, C2, C3, C4, C5, C6, C7, C8, C9, C10, C11, C13, C14, C15, C17,
29 C18, C19, C20, C21, C22, C24, C25, C28, C38, C39, C40, N1, N2, N3, N4, N5, N8, N9,

1 N11, N21, S1, S4, S5, S6, S14, S20 and S21 of Rapides Parish and Precincts 1-1, 1-5, 2-1,
2 2-2, 2-3, 3-1, 3-1A, 3-1B, 3-1C, 3-2, 5-1, 5-2, 5-3, 5-4, 6-1, 6-1A, 6-3, 7-1, 7-1A and 7-5
3 of Winn Parish.

4 (30) District 30 is composed of Beauregard Parish; Precincts 160E, 160W, 161,
5 460E, 460W, 465, 466E, 466W, 468, 469, 560, 561, 562, 600, 601, 602, 603, 660, 661, 662,
6 663, 700, 701, 702, 703, 760, 761 and 762 of Calcasieu Parish and Vernon Parish.

7 (31) District 31 is composed of Precincts 10, 12, 29, 46, 48, 49, 50, 51, 53 and 58
8 of De Soto Parish; Precincts 1-1, 1-1A, 1-2, 1-3A, 1-5A, 1-6, 1-7, 1-8, 1-9, 1-9A, 1-10,
9 1-10A, 1-10B, 1-11, 1-12, 1-14, 2-1, 2-2, 2-3, 2-4, 2-5, 2-6, 2-7, 2-7A, 2-8, 2-9, 3-1, 3-2, 3-3,
10 3-4, 3-5, 3-6, 3-7, 3-8, 3-9, 3-10, 4-1, 4-2, 4-3, 4-4, 4-5, 4-6, 4-7 and 4-8 of Natchitoches
11 Parish; Precincts C23, C26, C27, C30, C31, C32, C33, C34, C35, C36, C37, C41, C42,
12 N10, S2, S7, S8, S9, S10, S11, S13, S15, S17, S18, S19, S22, S23, S24, S25, S26, S27, S28
13 and S29 of Rapides Parish; Red River Parish; Sabine Parish and Precincts 1-3, 1-4,
14 3-2A, 3-3, 4-1, 4-2, 4-2A, 4-3, 4-4 and 4-5 of Winn Parish.

15 (32) District 32 is composed of Precincts 1-1, 1-2, 2-2A, 2-3A and 6-2A of
16 Avoyelles Parish; Caldwell Parish; Catahoula Parish; Precincts 1-3 (Part) that portion
17 northwest of US Highway 65, 3-1, 3-2, 3-3, 4-1, 4-2, 4-3, 4-4, 4-6, 5-2, 5-3, 5-4, 5-5, 5-6
18 and 5-7 of Concordia Parish; Franklin Parish; La Salle Parish; Precincts 25, 26, 57 and
19 58 of Ouachita Parish; Precincts N22, N23, N24, N25, N26, N27, N28, N29 and S16 of
20 Rapides Parish; Precincts 1, 2, 3, 5 and 8 of Richland Parish and West Feliciana Parish.

21 (33) District 33 is composed of Precincts 1, 8, 10, 11, 21, 22, 81, 84, 85, 87, 88,
22 91, 92, 93, 94 and 96 of Claiborne Parish; Precincts 4-1, 4-2, 4-3, 4-4, 4-5 and 5-2 of
23 Lincoln Parish; Precincts 2, 3, 4, 5, 6, 7, 8, 20, 21, 22, 23, 24, 25, 26, 27, 28, 29, 30, 31,
24 40, 41, 42, 43, 44, 45, 47, 48, 49, 50, 51, 53 and 54 of Morehouse Parish; Precincts 1, 2,
25 3, 4, 5, 6, 7, 8, 35, 36, 37, 41, 43, 44, 44A, 49, 50, 51, 75 and 76 of Ouachita Parish; Union
26 Parish and West Carroll Parish.

27 (34) District 34 is composed of Precincts 1-1, 1-2, 1-3 (Part) that portion
28 southeast of US Highway 65, 1-4, 2-1, 2-4 and 5-1 of Concordia Parish; East Carroll
29 Parish; Madison Parish; Precincts 1, 9, 10, 12, 13, 14, 15, 16, 17, 18, 33, 34, 35, 36, 37,

1 38, 39, 52 and 55 of Morehouse Parish; Precincts 9, 9A, 10, 11, 12, 13, 14, 15, 16, 17, 18,
 2 19, 20, 21, 22, 23, 24, 27, 28, 29, 30, 60, 63, 65, 66, 67, 68, 69, 70, 72, 73, 74 and 79 of
 3 Ouachita Parish; Precincts 4, 6, 7, 9, 10, 11, 12, 13, 14, 15, 16, 17, 18, 19, 20, 21, 22, 23,
 4 24, 25, 26, 27, 28, 29, 30, 31, 32, 33, 34 and 35 of Richland Parish and Tensas Parish.

5 (35) District 35 is composed of Precincts 2-3, 4-1, 4-2, 5-1, 5-2, 6-1, 6-2, 6-3, 7-1,
 6 7-2, 7-3, 7-4, 8-1, 8-2 and 8-3 of Grant Parish; Precincts 4, 5, 5A, 6, 7, 8, 8A, 9, 10, 11,
 7 13, 14A, 15, 22, 24 and 26A of Jackson Parish; Precincts 3-2, 3-3, 3-4, 3-5, 5-1, 5-3, 5-4,
 8 6-1, 6-2, 6-3, 6-4, 6-5, 7-1, 7-2, 8-1, 8-2, 8-3, 9-2, 9-3, 10-2, 10-4 and 12-2 of Lincoln
 9 Parish; Precincts 31, 32, 33, 34, 38, 39, 40, 42, 45, 46, 47, 48, 52, 53, 54, 55, 56, 59, 61,
 10 62, 64, 71, 77 and 78 of Ouachita Parish; Precincts N6, N7, N12, N13, N14, N15, N16,
 11 N17, N18, N19 and N20 of Rapides Parish and Precincts 5-5, 6-4, 6-5, 6-6, 7-2, 7-2A, 7-7
 12 and 7-7A of Winn Parish.

13 (36) District 36 is composed of Precincts 2-3, 3-2, 3-3, 3-4, 3-5, 4-1, 4-2, 4-4, 5-1,
 14 5-2, 5-3, 5-4, 6-1, 6-2, 6-3 and 6-4 of Bienville Parish; Precincts 2-1, 2-17A, 2-18A,
 15 2-18B, 2-18C, 2-21A, 2-21B, 2-21C, 2-21D, 2-22A, 2-22B, 3-1, 3-2, 3-3, 3-4, 4-1A, 4-2,
 16 4-3A, 4-3B, 4-3C, 4-4A, 4-4B, 4-5A, 4-6, 4-7, 4-9, 4-11A, 4-11B and 4-11C of Bossier
 17 Parish; Precincts 3, 5, 7, 31, 34, 35, 36, 37, 41, 42 and 51 of Claiborne Parish and
 18 Webster Parish.

19 (37) District 37 is composed of Precincts 1-1, 1-2, 1-3, 1-3A, 1-4, 1-4A, 1-5, 2-2,
 20 2-3, 2-4, 2-5, 2-6, 2-7, 2-8, 2-9, 2-10, 2-11, 2-11A, 2-12A, 2-12B, 2-12C, 2-13, 2-14, 2-15,
 21 2-16, 2-16A, 2-17B, 2-19, 2-20, 2-23, 4-8A, 4-8B, 4-8C, 4-8D and 4-10 of Bossier Parish
 22 and Precincts 6, 7, 8, 9, 10, 11, 12, 13, 14, 15, 16, 17, 20, 21, 22, 24, 26, 27, 48, 49, 64, 76,
 23 77, 99, 102, 104, 109 and 129 of Caddo Parish.

24 (38) District 38 is composed of Precincts 4, 52, 56, 62, 63, 65, 66, 68, 69, 72, 75,
 25 78, 79, 84, 85, 87, 88, 89, 90, 91, 92, 93, 94, 95, 97, 100, 101, 103, 105, 107, 108, 110, 122,
 26 123, 125, 126, 127, 128, 132, 133, 134 and 159 of Caddo Parish and Precincts 1, 3, 4, 5,
 27 6, 7, 8, 9, 11, 15, 16, 19, 20, 21, 22, 23, 26, 27, 28, 30, 31, 32, 33, 34, 35, 36, 37, 38, 39, 41,
 28 42, 44, 47, 52, 55, 56, 57, 59, 60, 61 and 63 of De Soto Parish.

29 (39) District 39 is composed of Precincts 1, 2, 3, 5, 23, 25, 28, 29, 30, 31, 32, 34,

1 35, 36, 37, 38, 39, 40, 41, 42, 43, 44, 45, 46, 47, 50, 51, 53, 54, 55, 57, 58, 59, 60, 61, 67, 70,
2 71, 73, 74, 80, 81, 82, 83, 86, 98, 106, 130, 135, 136, 137, 138, 139, 140, 142, 143, 144, 145,
3 146, 149, 150, 151, 154, 155, 156, 157 and 158 of Caddo Parish.

4 (B) The precincts referenced in this Act are those precincts identified as Voting
5 Districts (VTDs) in the 2010 Census Redistricting TIGER/Line Shapefiles for the State
6 of Louisiana.

7 (C) When a precinct referenced in this Act has been subdivided by action of the
8 parish governing authority on a nongeographic basis or subdivided by action of the
9 parish governing authority on a geographic basis in accordance with the provisions of
10 R.S. 18:532.1, the enumeration in this Act of the general precinct designation shall
11 include all nongeographic and all geographic subdivisions thereof, however such
12 subdivisions may be designated. The territorial limits of the districts as provided in this
13 Act shall continue in effect without change regardless of any changes made to the
14 precincts by the parish governing authority.

15 Section 2. (A) The provisions of Section 1 of this Act shall be effective for the
16 limited purposes of qualifying candidates for and electing members to the Senate of the
17 Legislature of Louisiana at the next regularly scheduled election for members of the Senate
18 in 2012, commencing on the date and at the time that the qualifying period opens for such
19 offices. The effectiveness of Section 1 of this Act for such qualification and election shall
20 not reduce the term of office of any member of the Senate nor change any Senate district as
21 established in R.S. 24:35.1 until such provisions of law are repealed pursuant to Section of
22 this Act.

23 (B) Except as provided in Subsection A of this Section, the provisions of Section 1
24 of this Act shall be effective at 10:00 a.m. on the second Monday in January, 2012.

25 Section 3. A vacancy in the office of a member elected to serve a term of office
26 commencing at 10:00 a.m. on the second Monday in January, 2012, shall be filled, as
27 required by law from the district created by Section 1 of this Act from which the member
28 was elected.

29 Section 4. R.S. 24:35.1 is hereby repealed, effective at 10:00 a.m., January 9, 2012.

1 Section 5. This Act shall become effective upon signature by the governor or, if not
2 signed by the governor, upon expiration of the time for bills to become law without signature
3 by the governor, as provided by Article III, Section 18 of the Constitution of Louisiana. If
4 vetoed by the governor and subsequently approved by the legislature, this Act shall become
5 effective on the day following such approval.

The original instrument and the following digest, which constitutes no part
of the legislative instrument, were prepared by Sue Morain.

DIGEST

Proposed law redistricts the thirty-nine present La. State Senate districts.

Effective upon signature of the governor or lapse of time for gubernatorial action.

(Adds R.S. 24:35, repeals R.S. 24:35.1)

Plan Statistics

<u>Districts:</u>	<u># of Members</u>	<u>Actual Population</u>	<u>Ideal Population</u>	<u>Absolute Deviation</u>	<u>Relative Deviation</u>
District 1	1	110,525	116,240	-5,715	-4.917%
District 2	1	110,743	116,240	-5,497	-4.729%
District 3	1	110,517	116,240	-5,723	-4.923%
District 4	1	115,036	116,240	-1,204	-1.036%
District 5	1	113,950	116,240	-2,290	-1.970%
District 6	1	117,866	116,240	1,626	1.399%
District 7	1	120,246	116,240	4,006	3.446%
District 8	1	121,880	116,240	5,640	4.852%
District 9	1	121,670	116,240	5,430	4.671%
District 10	1	121,573	116,240	5,333	4.588%
District 11	1	120,913	116,240	4,673	4.020%
District 12	1	113,336	116,240	-2,904	-2.498%
District 13	1	119,974	116,240	3,734	3.212%
District 14	1	118,231	116,240	1,991	1.713%
District 15	1	110,475	116,240	-5,765	-4.960%
District 16	1	110,514	116,240	-5,726	-4.926%
District 17	1	120,462	116,240	4,222	3.632%
District 18	1	110,589	116,240	-5,651	-4.861%
District 19	1	114,244	116,240	-1,996	-1.717%
District 20	1	116,242	116,240	2	0.002%
District 21	1	121,985	116,240	5,745	4.942%
District 22	1	121,775	116,240	5,535	4.762%
District 23	1	120,945	116,240	4,705	4.048%
District 24	1	118,497	116,240	2,257	1.942%
District 25	1	122,001	116,240	5,761	4.956%
District 26	1	121,929	116,240	5,689	4.894%
District 27	1	119,707	116,240	3,467	2.983%
District 28	1	113,715	116,240	-2,525	-2.172%
District 29	1	118,084	116,240	1,844	1.586%
District 30	1	118,516	116,240	2,276	1.958%
District 31	1	110,845	116,240	-5,395	-4.641%
District 32	1	112,544	116,240	-3,696	-3.180%
District 33	1	111,296	116,240	-4,944	-4.253%
District 34	1	117,611	116,240	1,371	1.179%
District 35	1	115,198	116,240	-1,042	-0.896%
District 36	1	113,506	116,240	-2,734	-2.352%
District 37	1	110,770	116,240	-5,470	-4.706%
District 38	1	112,058	116,240	-4,182	-3.598%
District 39	1	113,404	116,240	-2,836	-2.440%

Grand Total:	39	4,533,372	4,533,360
---------------------	-----------	------------------	------------------

Ideal Population Per Member:	116240	
Number of Districts for Plan Type:	39	
Range of District Populations:	110,475 to	122,001
Absolute Mean Deviation:	296	
Absolute Range:	-5,765 to	5,761
Absolute Overall Range:	11,526	
Relative Mean Deviation:	3.32%	
Relative Range:	-4.96% to	4.96%
Relative Overall Range:	9.92%	

<i>Ideal - Actual:</i>	-12
<i>Remainder:</i>	12
<i>Unassigned Population:</i>	0

Total Population

	Total Population	Total White	Total Black	Total Asian	Total American Indian	Total Other	Total Hispanic	Reg Total Jan 2011
District 1	110,525	35,363	64,410	7,108	851	2,793	6,149	69,135
	100.000%	31.995%	58.276%	6.431%	0.770%	2.527%	5.563%	82.401%
District 2	110,743	34,331	72,402	1,476	441	2,093	5,054	68,626
	100.000%	31.001%	65.378%	1.333%	0.398%	1.890%	4.564%	80.121%
District 3	110,517	45,044	59,649	2,366	626	2,832	7,323	68,736
	100.000%	40.758%	53.973%	2.141%	0.566%	2.563%	6.626%	74.921%
District 4	115,036	39,995	65,032	4,342	801	4,866	10,485	61,700
	100.000%	34.767%	56.532%	3.774%	0.696%	4.230%	9.115%	73.172%
District 5	113,950	66,612	35,166	6,383	1,598	4,191	10,291	68,941
	100.000%	58.457%	30.861%	5.602%	1.402%	3.678%	9.031%	80.885%
District 6	117,866	94,497	13,162	4,310	709	5,188	13,501	70,065
	100.000%	80.173%	11.167%	3.657%	0.602%	4.402%	11.455%	72.584%
District 7	120,246	95,574	12,708	4,751	745	6,468	19,050	72,436
	100.000%	79.482%	10.568%	3.951%	0.620%	5.379%	15.843%	76.250%
District 8	121,880	92,190	23,460	2,437	1,368	2,425	6,436	73,444
	100.000%	75.640%	19.248%	2.000%	1.122%	1.990%	5.281%	80.768%
District 9	121,670	106,436	10,691	1,760	1,046	1,737	5,460	76,697
	100.000%	87.479%	8.787%	1.447%	0.860%	1.428%	4.488%	85.872%
District 10	121,573	84,860	33,930	538	894	1,351	3,672	69,888
	100.000%	69.802%	27.909%	0.443%	0.735%	1.111%	3.020%	76.977%
District 11	120,913	85,888	29,415	2,572	770	2,268	4,979	69,191
	100.000%	71.033%	24.327%	2.127%	0.637%	1.876%	4.118%	76.095%
District 12	113,336	103,636	6,790	808	898	1,204	3,104	66,346
	100.000%	91.441%	5.991%	0.713%	0.792%	1.062%	2.739%	80.320%
District 13	119,974	26,522	87,971	2,787	433	2,261	4,288	65,246
	100.000%	22.106%	73.325%	2.323%	0.361%	1.885%	3.574%	75.365%
District 14	118,231	35,907	75,991	4,157	439	1,737	4,052	61,453
	100.000%	30.370%	64.273%	3.516%	0.371%	1.469%	3.427%	67.412%
District 15	110,475	83,444	20,188	4,558	443	1,842	4,905	67,120
	100.000%	75.532%	18.274%	4.126%	0.401%	1.667%	4.440%	74.869%
District 16	110,514	46,268	62,172	516	454	1,104	2,611	67,490
	100.000%	41.866%	56.257%	0.467%	0.411%	0.999%	2.363%	81.636%
District 17	120,462	75,169	43,319	437	686	851	2,062	80,694
	100.000%	62.401%	35.961%	0.363%	0.569%	0.706%	1.712%	87.958%
District 18	110,589	92,698	13,845	1,234	686	2,126	4,642	65,761
	100.000%	83.822%	12.519%	1.116%	0.620%	1.922%	4.198%	82.630%
District 19	114,244	68,746	40,052	1,100	900	3,446	7,659	66,316
	100.000%	60.175%	35.058%	0.963%	0.788%	3.016%	6.704%	78.960%
District 20	116,242	86,314	16,209	1,219	9,015	3,485	5,524	60,955
	100.000%	74.254%	13.944%	1.049%	7.755%	2.998%	4.752%	70.502%
District 21	121,985	81,700	33,232	1,854	2,718	2,481	4,854	70,508
	100.000%	66.975%	27.243%	1.520%	2.228%	2.034%	3.979%	77.811%
District 22	121,775	83,111	33,720	2,383	770	1,791	3,230	77,122
	100.000%	68.250%	27.690%	1.957%	0.632%	1.471%	2.652%	86.292%
District 23	120,945	99,965	15,156	3,013	763	2,048	4,729	72,182
	100.000%	82.653%	12.531%	2.491%	0.631%	1.693%	3.910%	76.963%
District 24	118,497	47,949	67,977	603	579	1,389	2,574	76,732
	100.000%	40.464%	57.366%	0.509%	0.489%	1.172%	2.172%	89.135%
District 25	122,001	100,463	18,080	1,367	905	1,186	2,491	75,041
	100.000%	82.346%	14.820%	1.120%	0.742%	0.972%	2.042%	83.340%
District 26	121,929	94,792	22,661	1,874	708	1,894	3,975	70,827
	100.000%	77.744%	18.585%	1.537%	0.581%	1.553%	3.260%	79.365%
District 27	119,707	74,602	41,373	1,312	882	1,538	3,253	73,941
	100.000%	62.320%	34.562%	1.096%	0.737%	1.285%	2.717%	82.634%
District 28	113,715	77,453	33,126	601	1,601	934	2,034	65,754
	100.000%	68.112%	29.131%	0.529%	1.408%	0.821%	1.789%	77.210%
District 29	118,084	44,967	69,836	1,231	900	1,150	2,264	63,964
	100.000%	38.081%	59.141%	1.042%	0.762%	0.974%	1.917%	71.815%
District 30	118,516	96,368	15,707	1,907	2,213	2,321	5,361	59,967
	100.000%	81.312%	13.253%	1.609%	1.867%	1.958%	4.523%	69.234%
District 31	110,845	79,708	24,545	1,194	4,062	1,336	3,177	68,162
	100.000%	71.909%	22.144%	1.077%	3.665%	1.205%	2.866%	81.527%
District 32	112,544	84,856	25,981	342	807	558	1,600	66,989
	100.000%	75.398%	23.085%	0.304%	0.717%	0.496%	1.422%	77.949%
District 33	111,296	80,169	28,359	995	560	1,213	2,341	69,738
	100.000%	72.032%	25.481%	0.894%	0.503%	1.090%	2.103%	82.129%
District 34	117,611	36,537	79,386	652	411	625	1,583	72,872
	100.000%	31.066%	67.499%	0.554%	0.349%	0.531%	1.346%	85.203%
District 35	115,198	96,708	14,935	1,351	1,102	1,102	3,305	67,526
	100.000%	83.949%	12.965%	1.173%	0.957%	0.957%	2.869%	76.161%

Total Population

	Total Population	Total White	Total Black	Total Asian	Total American Indian	Total Other	Total Hispanic	Reg Total Jan 2011
District 36	113,506	82,237	28,183	1,025	1,029	1,032	2,886	66,139
	100.000%	72.452%	24.830%	0.903%	0.907%	0.909%	2.543%	77.462%
District 37	110,770	76,100	27,315	2,996	999	3,360	6,896	59,440
	100.000%	68.701%	24.659%	2.705%	0.902%	3.033%	6.226%	69.997%
District 38	112,058	66,045	42,215	1,534	1,081	1,183	2,975	67,313
	100.000%	58.938%	37.672%	1.369%	0.965%	1.056%	2.655%	79.308%
District 39	113,404	32,968	78,536	458	660	782	1,785	65,918
	100.000%	29.071%	69.253%	0.404%	0.582%	0.690%	1.574%	79.150%
Grand Total	4,533,372	2,836,192	1,486,885	81,551	46,553	82,191	192,560	2,680,375
	100.000%	62.563%	32.799%	1.799%	1.027%	1.813%	4.248%	78.480%

Voter Registration

	Reg Total Jan 2011	Reg White Jan 2011	Reg Black Jan 2011	Reg Other Jan 2011	Reg Dem Total Jan 2011	Reg Rep Total Jan 2011	Reg Other Total Jan 2011
District 1	69,135	23,104	40,464	5,567	46,041	7,258	15,837
	82.401%	33.419%	58.529%	8.052%	66.596%	10.498%	22.907%
District 2	68,626	21,739	43,064	3,823	46,682	7,998	13,946
	80.121%	31.677%	62.752%	5.571%	68.024%	11.654%	20.322%
District 3	68,736	26,838	36,598	5,300	43,767	7,913	17,056
	74.921%	39.045%	53.244%	7.711%	63.674%	11.512%	24.814%
District 4	61,700	23,771	32,707	5,222	36,606	10,375	14,719
	73.172%	38.527%	53.010%	8.464%	59.329%	16.815%	23.856%
District 5	68,941	42,486	19,804	6,651	34,801	15,204	18,935
	80.885%	61.627%	28.726%	9.647%	50.479%	22.054%	27.466%
District 6	70,065	60,371	4,542	5,152	24,509	28,530	17,026
	72.584%	86.164%	6.483%	7.353%	34.980%	40.719%	24.300%
District 7	72,436	59,981	4,891	7,564	24,366	30,130	17,940
	76.250%	82.806%	6.752%	10.442%	33.638%	41.595%	24.767%
District 8	73,444	57,181	11,723	4,540	28,040	25,581	19,823
	80.768%	77.857%	15.962%	6.182%	38.179%	34.831%	26.991%
District 9	76,697	67,686	4,921	4,090	19,653	37,817	19,227
	85.872%	88.251%	6.416%	5.333%	25.624%	49.307%	25.069%
District 10	69,888	51,120	16,985	1,783	36,190	18,565	15,133
	76.977%	73.146%	24.303%	2.551%	51.783%	26.564%	21.653%
District 11	69,191	53,625	12,714	2,852	26,530	25,204	17,457
	76.095%	77.503%	18.375%	4.122%	38.343%	36.427%	25.230%
District 12	66,346	61,596	2,904	1,846	23,057	26,452	16,837
	80.320%	92.841%	4.377%	2.782%	34.753%	39.870%	25.378%
District 13	65,246	17,838	45,101	2,307	45,265	8,335	11,646
	75.365%	27.340%	69.125%	3.536%	69.376%	12.775%	17.849%
District 14	61,453	16,727	42,021	2,705	39,778	8,670	13,005
	67.412%	27.219%	68.379%	4.402%	64.729%	14.108%	21.163%
District 15	67,120	55,648	7,960	3,512	22,136	29,708	15,276
	74.869%	82.908%	11.859%	5.232%	32.980%	44.261%	22.759%
District 16	67,490	29,240	37,097	1,153	47,718	8,474	11,298
	81.636%	43.325%	54.967%	1.708%	70.704%	12.556%	16.740%
District 17	80,694	51,402	27,668	1,624	50,562	16,070	14,062
	87.958%	63.700%	34.288%	2.013%	62.659%	19.915%	17.426%
District 18	65,761	56,286	6,884	2,591	26,969	21,571	17,221
	82.630%	85.592%	10.468%	3.940%	41.011%	32.802%	26.187%
District 19	66,316	42,249	21,075	2,992	34,399	16,020	15,897
	78.960%	63.709%	31.780%	4.512%	51.871%	24.157%	23.972%
District 20	60,955	49,747	7,591	3,617	30,449	14,878	15,628
	70.502%	81.613%	12.453%	5.934%	49.953%	24.408%	25.639%
District 21	70,508	49,946	18,044	2,518	34,383	19,150	16,975
	77.811%	70.837%	25.591%	3.571%	48.765%	27.160%	24.075%
District 22	77,122	55,055	19,805	2,262	41,429	19,653	16,040
	86.292%	71.387%	25.680%	2.933%	53.719%	25.483%	20.798%
District 23	72,182	62,999	5,890	3,293	22,225	31,183	18,774
	76.963%	87.278%	8.160%	4.562%	30.790%	43.201%	26.009%
District 24	76,732	32,400	42,307	2,025	48,932	12,350	15,450
	89.135%	42.225%	55.136%	2.639%	63.770%	16.095%	20.135%
District 25	75,041	63,653	9,689	1,699	39,134	18,648	17,259
	83.340%	84.824%	12.912%	2.264%	52.150%	24.850%	22.999%
District 26	70,827	57,673	11,409	1,745	37,434	16,499	16,894
	79.365%	81.428%	16.108%	2.464%	52.853%	23.295%	23.852%
District 27	73,941	47,786	23,708	2,447	39,274	16,882	17,785
	82.634%	64.627%	32.063%	3.309%	53.115%	22.832%	24.053%
District 28	65,754	47,562	16,861	1,331	42,627	11,380	11,747
	77.210%	72.333%	25.643%	2.024%	64.828%	17.307%	17.865%
District 29	63,964	26,297	35,921	1,746	40,295	10,726	12,943
	71.815%	41.112%	56.158%	2.730%	62.996%	16.769%	20.235%
District 30	59,967	51,305	6,029	2,633	27,719	16,188	16,060
	69.234%	85.555%	10.054%	4.391%	46.224%	26.995%	26.781%
District 31	68,162	51,830	13,476	2,856	33,985	19,807	14,370
	81.527%	76.039%	19.771%	4.190%	49.859%	29.059%	21.082%
District 32	66,989	54,008	12,050	930	34,502	19,129	13,359
	77.949%	80.622%	17.988%	1.388%	51.504%	28.555%	19.942%
District 33	69,738	53,727	14,251	1,760	29,349	25,538	14,851
	82.129%	77.041%	20.435%	2.524%	42.085%	36.620%	21.295%
District 34	72,872	23,274	47,820	1,779	47,730	11,154	13,987
	85.203%	31.938%	65.622%	2.441%	65.498%	15.306%	19.194%
District 35	67,526	59,339	6,023	2,164	23,910	27,216	16,400
	76.161%	87.876%	8.920%	3.205%	35.409%	40.304%	24.287%

Voter Registration

	Reg Total Jan 2011	Reg White Jan 2011	Reg Black Jan 2011	Reg Other Jan 2011	Reg Dem Total Jan 2011	Reg Rep Total Jan 2011	Reg Other Total Jan 2011
District 36	66,139	49,190	15,297	1,652	27,794	23,471	14,874
	77.462%	74.374%	23.129%	2.498%	42.024%	35.487%	22.489%
District 37	59,440	44,890	11,682	2,868	21,425	23,612	14,403
	69.997%	75.522%	19.653%	4.825%	36.045%	39.724%	24.231%
District 38	67,313	42,146	22,634	2,533	32,127	21,378	13,808
	79.308%	62.612%	33.625%	3.763%	47.728%	31.759%	20.513%
District 39	65,918	19,402	44,467	2,049	43,194	9,473	13,251
	79.150%	29.434%	67.458%	3.108%	65.527%	14.371%	20.102%
Grand Total	2,680,375	1,761,117	804,077	115,181	1,354,986	718,190	607,199

Splits

	Total Population	Total White	Total Black	Total Asian	Total American Indian	Total Other	VAP Total	VAP White	VAP Black	VAP Asian	VAP American Indian	VAP Other	Reg Total Jan 2011	Reg White Jan 2011	Reg Black Jan 2011	Reg Other Jan 2011
District 1																
*Jefferson	30,607	10,846	17,541	1,314	287	619	23,217	8,934	12,655	965	200	463	19,149	6,447	11,507	1,195
*Orleans	60,091	9,452	43,916	5,204	304	1,215	45,782	8,520	32,051	3,985	247	979	37,797	5,880	28,245	3,672
*St. Bernard	19,827	15,065	2,953	590	260	959	14,902	11,784	1,799	432	186	701	12,189	10,777	712	700
District 1	110,525	35,363	64,410	7,108	851	2,793	83,901	29,238	46,505	5,382	633	2,143	69,135	23,104	40,464	5,567
	100.000%	31.995%	58.276%	6.431%	0.770%	2.527%	100.000%	34.848%	55.428%	6.415%	0.754%	2.554%	82.401%	33.419%	58.529%	8.052%
District 2																
*Orleans	110,743	34,331	72,402	1,476	441	2,093	85,653	29,808	52,531	1,229	374	1,711	68,626	21,739	43,064	3,823
District 2	110,743	34,331	72,402	1,476	441	2,093	85,653	29,808	52,531	1,229	374	1,711	68,626	21,739	43,064	3,823
	100.000%	31.001%	65.378%	1.333%	0.398%	1.890%	100.000%	34.801%	61.330%	1.435%	0.437%	1.998%	80.121%	31.677%	62.752%	5.571%
District 3																
*Jefferson	1,524	262	1,218	23	0	21	1,215	231	950	17	0	17	1,137	156	909	72
*Orleans	108,993	44,782	58,431	2,343	626	2,811	90,530	40,467	45,033	2,080	538	2,412	67,599	26,682	35,689	5,228
District 3	110,517	45,044	59,649	2,366	626	2,832	91,745	40,698	45,983	2,097	538	2,429	68,736	26,838	36,598	5,300
	100.000%	40.758%	53.973%	2.141%	0.566%	2.563%	100.000%	44.360%	50.120%	2.286%	0.586%	2.648%	74.921%	39.045%	53.244%	7.711%
District 4																
*Jefferson	52,406	16,638	29,371	2,575	325	3,497	38,271	13,590	19,864	2,014	218	2,585	26,791	9,533	14,446	2,812
*Orleans	49,724	12,615	34,395	1,407	253	1,054	36,927	10,758	24,046	1,123	194	806	27,922	8,013	17,814	2,095
*Plaquemines	12,906	10,742	1,266	360	223	315	9,124	7,818	754	223	146	183	6,987	6,225	447	315
District 4	115,036	39,995	65,032	4,342	801	4,866	84,322	32,166	44,664	3,360	558	3,574	61,700	23,771	32,707	5,222
	100.000%	34.767%	56.532%	3.774%	0.696%	4.230%	100.000%	38.147%	52.968%	3.985%	0.662%	4.239%	73.172%	38.527%	53.010%	8.464%
District 5																
*Jefferson	105,757	61,849	32,628	5,915	1,285	4,080	79,147	48,847	22,154	4,335	915	2,896	62,749	38,719	17,928	6,102
*Plaquemines	8,193	4,763	2,538	468	313	111	6,086	3,674	1,747	349	236	80	6,192	3,767	1,876	549
District 5	113,950	66,612	35,166	6,383	1,598	4,191	85,233	52,521	23,901	4,684	1,151	2,976	68,941	42,486	19,804	6,651
	100.000%	58.457%	30.861%	5.602%	1.402%	3.678%	100.000%	61.620%	28.042%	5.496%	1.350%	3.492%	80.885%	61.627%	28.726%	9.647%
District 6																
*Jefferson	105,470	83,524	12,239	3,975	651	5,081	86,200	69,719	8,939	3,084	502	3,956	61,398	52,976	3,940	4,482
*Orleans	12,396	10,973	923	335	58	107	10,330	9,169	772	273	38	78	8,667	7,395	602	670
District 6	117,866	94,497	13,162	4,310	709	5,188	96,530	78,888	9,711	3,357	540	4,034	70,065	60,371	4,542	5,152
	100.000%	80.173%	11.167%	3.657%	0.602%	4.402%	100.000%	81.724%	10.060%	3.478%	0.559%	4.179%	72.584%	86.164%	6.483%	7.353%
District 7																
*Jefferson	120,246	95,574	12,708	4,751	745	6,468	94,998	77,203	8,762	3,623	568	4,842	72,436	59,981	4,891	7,564
District 7	120,246	95,574	12,708	4,751	745	6,468	94,998	77,203	8,762	3,623	568	4,842	72,436	59,981	4,891	7,564
	100.000%	79.482%	10.568%	3.951%	0.620%	5.379%	100.000%	81.268%	9.223%	3.814%	0.598%	5.097%	76.250%	82.806%	6.752%	10.442%
District 8																
*Orleans	1,882	1,275	380	186	14	27	1,392	958	261	150	8	15	1,161	727	234	200

Splits

	Total Population	Total White	Total Black	Total Asian	Total American Indian	Total Other	VAP Total	VAP White	VAP Black	VAP Asian	VAP American Indian	VAP Other	Reg Total Jan 2011	Reg White Jan 2011	Reg Black Jan 2011	Reg Other Jan 2011
District 8																
*Plaquemines	1,943	741	1,147	16	20	19	1,503	594	866	11	14	18	1,355	549	752	54
*St. Bernard	16,070	11,514	3,752	283	262	259	11,818	8,706	2,539	208	184	181	11,169	8,555	2,117	497
*St. Tammany	101,985	78,660	18,181	1,952	1,072	2,120	76,219	60,586	11,990	1,350	804	1,489	59,759	47,350	8,620	3,789
District 8	121,880	92,190	23,460	2,437	1,368	2,425	90,932	70,844	15,656	1,719	1,010	1,703	73,444	57,181	11,723	4,540
	100.000%	75.640%	19.248%	2.000%	1.122%	1.990%	100.000%	77.909%	17.217%	1.890%	1.111%	1.873%	80.768%	77.857%	15.962%	6.182%
District 9																
*St. Tammany	106,651	93,602	8,900	1,687	911	1,551	78,082	69,447	5,832	1,108	632	1,063	67,947	59,905	4,238	3,804
*Tangipahoa	15,019	12,834	1,791	73	135	186	11,234	9,816	1,145	55	96	122	8,750	7,781	683	286
District 9	121,670	106,436	10,691	1,760	1,046	1,737	89,316	79,263	6,977	1,163	728	1,185	76,697	67,686	4,921	4,090
	100.000%	87.479%	8.787%	1.447%	0.860%	1.428%	100.000%	88.744%	7.812%	1.302%	0.815%	1.327%	85.872%	88.251%	6.416%	5.333%
District 10																
*St. Tammany	25,104	23,102	1,368	168	199	267	19,303	17,931	930	112	143	187	15,908	14,596	637	675
*Tangipahoa	49,301	30,276	17,678	225	390	732	36,183	23,336	11,927	159	296	465	28,372	18,551	9,109	712
Washington	47,168	31,482	14,884	145	305	352	35,305	24,363	10,374	101	238	229	25,608	17,973	7,239	396
District 10	121,573	84,860	33,930	538	894	1,351	90,791	65,630	23,231	372	677	881	69,888	51,120	16,985	1,783
	100.000%	69.802%	27.909%	0.443%	0.735%	1.111%	100.000%	72.287%	25.587%	0.410%	0.746%	0.970%	76.977%	73.146%	24.303%	2.551%
District 11																
*East Baton Rouge	48,449	34,676	10,540	1,759	296	1,178	36,624	27,569	6,741	1,250	219	845	29,463	23,796	4,209	1,458
*Livingston	18,506	16,827	1,023	179	178	299	13,153	12,077	647	120	132	177	9,845	9,191	318	336
*Tangipahoa	53,958	34,385	17,852	634	296	791	41,150	27,936	11,951	485	228	550	29,883	20,638	8,187	1,058
District 11	120,913	85,888	29,415	2,572	770	2,268	90,927	67,582	19,339	1,855	579	1,572	69,191	53,625	12,714	2,852
	100.000%	71.033%	24.327%	2.127%	0.637%	1.876%	100.000%	74.326%	21.269%	2.040%	0.637%	1.729%	76.095%	77.503%	18.375%	4.122%
District 12																
*East Baton Rouge	22,462	19,896	2,084	182	176	124	17,186	15,552	1,303	124	123	84	15,576	14,252	980	344
*Livingston	90,874	83,740	4,706	626	722	1,080	65,416	60,794	3,034	378	525	685	50,770	47,344	1,924	1,502
District 12	113,336	103,636	6,790	808	898	1,204	82,602	76,346	4,337	502	648	769	66,346	61,596	2,904	1,846
	100.000%	91.441%	5.991%	0.713%	0.792%	1.062%	100.000%	92.426%	5.250%	0.608%	0.784%	0.931%	80.320%	92.841%	4.377%	2.782%
District 13																
*East Baton Rouge	119,974	26,522	87,971	2,787	433	2,261	86,573	22,327	60,285	2,023	334	1,604	65,246	17,838	45,101	2,307
District 13	119,974	26,522	87,971	2,787	433	2,261	86,573	22,327	60,285	2,023	334	1,604	65,246	17,838	45,101	2,307
	100.000%	22.106%	73.325%	2.323%	0.361%	1.885%	100.000%	25.790%	69.635%	2.337%	0.386%	1.853%	75.365%	27.340%	69.125%	3.536%
District 14																
*East Baton Rouge	118,231	35,907	75,991	4,157	439	1,737	91,161	31,671	54,220	3,479	364	1,427	61,453	16,727	42,021	2,705
District 14	118,231	35,907	75,991	4,157	439	1,737	91,161	31,671	54,220	3,479	364	1,427	61,453	16,727	42,021	2,705
	100.000%	30.370%	64.273%	3.516%	0.371%	1.469%	100.000%	34.742%	59.477%	3.816%	0.399%	1.565%	67.412%	27.219%	68.379%	4.402%
District 15																

Splits

	Total Population	Total White	Total Black	Total Asian	Total American Indian	Total Other	VAP Total	VAP White	VAP Black	VAP Asian	VAP American Indian	VAP Other	Reg Total Jan 2011	Reg White Jan 2011	Reg Black Jan 2011	Reg Other Jan 2011
District 15																
*East Baton Rouge	110,475	83,444	20,188	4,558	443	1,842	89,650	69,744	14,671	3,515	361	1,359	67,120	55,648	7,960	3,512
District 15	110,475	83,444	20,188	4,558	443	1,842	89,650	69,744	14,671	3,515	361	1,359	67,120	55,648	7,960	3,512
	100.000%	75.532%	18.274%	4.126%	0.401%	1.667%	100.000%	77.796%	16.365%	3.921%	0.403%	1.516%	74.869%	82.908%	11.859%	5.232%
District 16																
*Ascension	20,312	6,464	13,272	116	65	395	14,646	5,200	9,055	92	48	251	12,296	4,183	7,799	314
*Assumption	11,119	4,846	6,090	19	46	118	8,286	3,835	4,319	13	27	92	7,162	3,184	3,954	24
*Iberville	11,346	4,463	6,754	45	22	62	9,395	3,897	5,403	32	19	44	5,419	2,198	3,116	105
*Lafourche	15,837	9,515	5,872	141	145	164	11,932	7,712	3,917	104	96	103	8,961	5,811	2,940	210
*St. James	17,062	7,059	9,851	28	42	82	12,757	5,631	7,021	21	33	51	11,715	4,985	6,576	154
*St. John the Baptist	20,874	6,505	14,033	81	79	176	15,351	5,269	9,855	48	63	116	13,117	4,017	8,824	276
*West Baton Rouge	13,964	7,416	6,300	86	55	107	10,305	5,698	4,430	70	39	68	8,820	4,862	3,888	70
District 16	110,514	46,268	62,172	516	454	1,104	82,672	37,242	44,000	380	325	725	67,490	29,240	37,097	1,153
	100.000%	41.866%	56.257%	0.467%	0.411%	0.999%	100.000%	45.048%	53.222%	0.460%	0.393%	0.877%	81.636%	43.325%	54.967%	1.708%
District 17																
*Assumption	12,302	10,789	1,160	49	144	160	9,379	8,361	780	38	98	102	7,626	6,909	632	85
*East Baton Rouge	20,580	14,482	5,760	121	126	91	15,312	11,012	4,076	80	85	59	13,759	9,890	3,539	330
East Feliciana	20,267	10,783	9,250	67	127	40	16,075	8,775	7,123	58	94	25	13,411	7,629	5,126	656
*Iberville	22,041	11,817	9,866	79	95	184	16,490	9,357	6,855	53	79	146	15,033	8,216	6,638	179
Pointe Coupee	22,802	14,010	8,427	69	71	225	17,327	11,073	6,020	44	57	133	15,464	9,584	5,696	184
St. Helena	11,203	5,034	6,014	16	72	67	8,440	4,036	4,291	11	60	42	8,432	3,816	4,517	99
*St. Martin	1,443	1,399	10	8	21	5	1,163	1,135	4	6	15	3	993	976	0	17
*West Baton Rouge	9,824	6,855	2,832	28	30	79	7,556	5,369	2,087	22	28	50	5,976	4,382	1,520	74
District 17	120,462	75,169	43,319	437	686	851	91,742	59,118	31,236	312	516	560	80,694	51,402	27,668	1,624
	100.000%	62.401%	35.961%	0.363%	0.569%	0.706%	100.000%	64.439%	34.048%	0.340%	0.562%	0.610%	87.958%	63.700%	34.288%	2.013%
District 18																
*Ascension	86,903	72,108	11,194	1,118	521	1,962	61,814	52,137	7,356	724	364	1,233	51,808	44,049	5,457	2,302
*Livingston	18,646	17,034	1,212	101	155	144	14,127	12,984	854	67	125	97	10,965	9,973	743	249
*St. James	5,040	3,556	1,439	15	10	20	3,644	2,600	1,018	5	8	13	2,988	2,264	684	40
District 18	110,589	92,698	13,845	1,234	686	2,126	79,585	67,721	9,228	796	497	1,343	65,761	56,286	6,884	2,591
	100.000%	83.822%	12.519%	1.116%	0.620%	1.922%	100.000%	85.093%	11.595%	1.000%	0.624%	1.688%	82.630%	85.592%	10.468%	3.940%
District 19																
*Jefferson	16,542	3,422	11,294	90	109	1,627	12,107	2,749	7,978	72	86	1,222	8,417	1,315	6,512	590
*Lafourche	17,053	13,077	3,392	79	249	256	12,981	10,282	2,297	58	159	185	9,867	7,963	1,658	246
St. Charles	52,780	36,540	14,395	575	371	899	38,572	27,445	9,868	357	263	639	31,705	22,913	7,454	1,338

Splits

	Total Population	Total White	Total Black	Total Asian	Total American Indian	Total Other	VAP Total	VAP White	VAP Black	VAP Asian	VAP American Indian	VAP Other	Reg Total Jan 2011	Reg White Jan 2011	Reg Black Jan 2011	Reg Other Jan 2011
District 19																
*St. John the Baptist	25,050	12,996	10,911	333	158	652	18,217	10,139	7,272	242	101	463	14,668	8,449	5,441	778
*Tangipahoa	2,819	2,711	60	23	13	12	2,110	2,043	36	11	11	9	1,659	1,609	10	40
District 19	114,244	68,746	40,052	1,100	900	3,446	83,987	52,658	27,451	740	620	2,518	66,316	42,249	21,075	2,992
	100.000%	60.175%	35.058%	0.963%	0.788%	3.016%	100.000%	62.698%	32.685%	0.881%	0.738%	2.998%	78.960%	63.709%	31.780%	4.512%
District 20																
*Lafourche	48,130	40,663	2,347	499	2,925	1,696	36,024	31,090	1,542	346	1,836	1,210	25,142	23,435	784	923
*Terrebonne	68,112	45,651	13,862	720	6,090	1,789	50,435	35,467	9,215	534	3,936	1,283	35,813	26,312	6,807	2,694
District 20	116,242	86,314	16,209	1,219	9,015	3,485	86,459	66,557	10,757	880	5,772	2,493	60,955	49,747	7,591	3,617
	100.000%	74.254%	13.944%	1.049%	7.755%	2.998%	100.000%	76.981%	12.442%	1.018%	6.676%	2.883%	70.502%	81.613%	12.453%	5.934%
District 21																
*Iberia	8,289	3,164	4,980	47	26	72	5,852	2,474	3,279	28	21	50	5,436	2,231	3,122	83
*Lafourche	15,298	13,190	1,752	136	138	82	11,715	10,278	1,189	104	96	48	9,741	8,618	934	189
St. Mary	54,650	32,406	18,290	1,058	1,269	1,627	40,746	25,191	12,797	773	837	1,148	31,845	20,072	10,527	1,246
*Terrebonne	43,748	32,940	8,210	613	1,285	700	32,302	25,154	5,432	452	789	475	23,486	19,025	3,461	1,000
District 21	121,985	81,700	33,232	1,854	2,718	2,481	90,615	63,097	22,697	1,357	1,743	1,721	70,508	49,946	18,044	2,518
	100.000%	66.975%	27.243%	1.520%	2.228%	2.034%	100.000%	69.632%	25.048%	1.498%	1.924%	1.899%	77.811%	70.837%	25.591%	3.571%
District 22																
*Iberia	64,951	42,387	19,111	1,879	402	1,172	47,546	32,663	12,475	1,280	286	842	39,703	27,785	10,795	1,123
*Lafayette	3,476	2,383	972	30	23	68	2,569	1,821	658	21	16	53	2,144	1,500	573	71
*St. Landry	7,310	6,924	310	16	33	27	5,380	5,121	217	10	21	11	5,128	4,791	242	95
*St. Martin	46,038	31,417	13,327	458	312	524	33,878	23,976	9,032	304	202	364	30,147	20,979	8,195	973
District 22	121,775	83,111	33,720	2,383	770	1,791	89,373	63,581	22,382	1,615	525	1,270	77,122	55,055	19,805	2,262
	100.000%	68.250%	27.690%	1.957%	0.632%	1.471%	100.000%	71.141%	25.043%	1.807%	0.587%	1.421%	86.292%	71.387%	25.680%	2.933%
District 23																
*Lafayette	120,945	99,965	15,156	3,013	763	2,048	93,788	78,654	10,835	2,276	560	1,463	72,182	62,999	5,890	3,293
District 23	120,945	99,965	15,156	3,013	763	2,048	93,788	78,654	10,835	2,276	560	1,463	72,182	62,999	5,890	3,293
	100.000%	82.653%	12.531%	2.491%	0.631%	1.693%	100.000%	83.864%	11.553%	2.427%	0.597%	1.560%	76.963%	87.278%	8.160%	4.562%
District 24																
*Lafayette	59,787	23,078	35,293	326	313	777	43,665	18,647	23,998	231	226	563	36,489	14,798	20,432	1,259
*St. Landry	54,031	23,374	29,624	265	249	519	39,072	18,107	20,250	175	170	370	37,534	16,691	20,184	659
*St. Martin	4,679	1,497	3,060	12	17	93	3,348	1,209	2,054	6	10	69	2,709	911	1,691	107
District 24	118,497	47,949	67,977	603	579	1,389	86,085	37,963	46,302	412	406	1,002	76,732	32,400	42,307	2,025
	100.000%	40.464%	57.366%	0.509%	0.489%	1.172%	100.000%	44.099%	53.786%	0.479%	0.472%	1.164%	89.135%	42.225%	55.136%	2.639%
District 25																
*Acadia	41,035	34,313	6,035	149	210	328	29,821	25,341	4,008	99	143	230	24,688	21,059	3,332	297

Splits

	Total Population	Total White	Total Black	Total Asian	Total American Indian	Total Other	VAP Total	VAP White	VAP Black	VAP Asian	VAP American Indian	VAP Other	Reg Total Jan 2011	Reg White Jan 2011	Reg Black Jan 2011	Reg Other Jan 2011
District 25																
*Calcasieu	42,533	34,479	6,074	1,110	360	510	31,842	26,538	3,942	773	263	326	25,480	21,514	3,037	929
Cameron	6,839	6,546	135	10	60	88	5,183	5,011	74	9	38	51	5,536	5,272	188	76
Jefferson Davis	31,594	25,125	5,836	98	275	260	23,196	18,871	3,891	66	180	188	19,337	15,808	3,132	397
District 25	122,001	100,463	18,080	1,367	905	1,186	90,042	75,761	11,915	947	624	795	75,041	63,653	9,689	1,699
	100.000%	82.346%	14.820%	1.120%	0.742%	0.972%	100.000%	84.140%	13.233%	1.052%	0.693%	0.883%	83.340%	84.824%	12.912%	2.264%
District 26																
*Acadia	20,738	14,814	5,610	47	103	164	15,089	11,213	3,660	32	70	114	12,568	9,287	3,109	172
*Lafayette	37,370	28,280	7,491	522	191	886	27,293	21,444	4,712	356	149	632	20,309	16,335	3,260	714
*St. Landry	5,822	4,776	906	31	38	71	4,338	3,618	642	19	20	39	3,197	2,700	412	85
Vermilion	57,999	46,922	8,654	1,274	376	773	42,522	35,424	5,457	902	259	480	34,753	29,351	4,628	774
District 26	121,929	94,792	22,661	1,874	708	1,894	89,242	71,699	14,471	1,309	498	1,265	70,827	57,673	11,409	1,745
	100.000%	77.744%	18.585%	1.537%	0.581%	1.553%	100.000%	80.342%	16.215%	1.467%	0.558%	1.417%	79.365%	81.428%	16.108%	2.464%
District 27																
*Calcasieu	119,707	74,602	41,373	1,312	882	1,538	89,480	58,113	28,655	984	668	1,060	73,941	47,786	23,708	2,447
District 27	119,707	74,602	41,373	1,312	882	1,538	89,480	58,113	28,655	984	668	1,060	73,941	47,786	23,708	2,447
	100.000%	62.320%	34.562%	1.096%	0.737%	1.285%	100.000%	64.945%	32.024%	1.100%	0.747%	1.185%	82.634%	64.627%	32.063%	3.309%
District 28																
Allen	25,764	18,435	6,192	220	749	168	19,870	14,288	4,828	154	495	105	13,110	10,190	2,397	523
*Avoyelles	37,746	24,038	12,759	159	605	185	28,561	18,740	9,173	114	403	131	20,547	14,386	5,738	423
Evangeline	33,984	23,439	9,862	139	161	383	24,817	17,619	6,661	97	117	323	21,407	15,267	5,973	167
*St. Landry	16,221	11,541	4,313	83	86	198	11,914	8,747	2,888	62	67	150	10,690	7,719	2,753	218
District 28	113,715	77,453	33,126	601	1,601	934	85,162	59,394	23,550	427	1,082	709	65,754	47,562	16,861	1,331
	100.000%	68.112%	29.131%	0.529%	1.408%	0.821%	100.000%	69.742%	27.653%	0.501%	1.271%	0.833%	77.210%	72.333%	25.643%	2.024%
District 29																
*Bienville	6,455	2,560	3,775	22	45	53	4,991	2,115	2,792	13	36	35	4,232	1,673	2,536	23
*Grant	5,480	3,582	1,825	13	43	17	4,148	2,799	1,301	9	30	9	3,503	2,275	1,177	51
*Jackson	8,052	4,943	3,007	13	38	51	6,262	3,897	2,288	11	32	34	4,401	2,802	1,544	55
*Lincoln	20,126	4,834	14,551	354	70	317	15,825	4,060	11,135	331	60	239	9,371	2,313	6,668	390
*Natchitoches	9,923	2,692	7,014	52	80	85	7,577	2,401	4,984	48	69	75	4,501	1,145	3,140	216
*Rapides	57,298	20,201	35,314	733	502	548	41,908	16,617	23,977	544	385	385	32,086	12,389	18,743	954
*Winn	10,750	6,155	4,350	44	122	79	8,357	4,866	3,305	37	97	52	5,870	3,700	2,113	57
District 29	118,084	44,967	69,836	1,231	900	1,150	89,068	36,755	49,782	993	709	829	63,964	26,297	35,921	1,746
	100.000%	38.081%	59.141%	1.042%	0.762%	0.974%	100.000%	41.266%	55.892%	1.115%	0.796%	0.931%	71.815%	41.112%	56.158%	2.730%
District 30																
Beauregard	35,654	29,321	5,016	353	652	312	26,359	21,902	3,569	239	460	189	19,924	16,703	2,304	917
*Calcasieu	30,528	27,433	2,378	128	384	205	22,434	20,426	1,542	89	256	121	18,423	16,721	1,230	472

Splits

	Total Population	Total White	Total Black	Total Asian	Total American Indian	Total Other	VAP Total	VAP White	VAP Black	VAP Asian	VAP American Indian	VAP Other	Reg Total Jan 2011	Reg White Jan 2011	Reg Black Jan 2011	Reg Other Jan 2011
District 30																
Vernon	52,334	39,614	8,313	1,426	1,177	1,804	37,822	29,416	5,349	1,026	848	1,183	21,620	17,881	2,495	1,244
District 30	118,516	96,368	15,707	1,907	2,213	2,321	86,615	71,744	10,460	1,354	1,564	1,493	59,967	51,305	6,029	2,633
	100.000%	81.312%	13.253%	1.609%	1.867%	1.958%	100.000%	82.831%	12.076%	1.563%	1.806%	1.724%	69.234%	85.555%	10.054%	4.391%
District 31																
*De Soto	4,308	3,064	1,117	6	58	63	3,217	2,349	778	3	50	37	2,613	1,892	643	78
*Natchitoches	29,643	18,802	9,764	145	569	363	22,389	14,825	6,787	103	408	266	18,481	12,036	5,738	707
*Rapides	40,553	32,753	5,405	934	726	735	30,583	25,272	3,620	661	551	479	25,167	21,737	2,405	1,025
Red River	9,091	5,360	3,633	16	43	39	6,778	4,256	2,450	12	34	26	5,981	3,566	2,377	38
Sabine	24,233	17,155	4,234	84	2,636	124	18,311	13,544	2,835	63	1,796	73	13,837	10,811	2,032	994
*Winn	3,017	2,574	392	9	30	12	2,329	2,007	288	7	19	8	2,083	1,788	281	14
District 31	110,845	79,708	24,545	1,194	4,062	1,336	83,607	62,253	16,758	849	2,858	889	68,162	51,830	13,476	2,856
	100.000%	71.909%	22.144%	1.077%	3.665%	1.205%	100.000%	74.459%	20.044%	1.015%	3.418%	1.063%	81.527%	76.039%	19.771%	4.190%
District 32																
*Avoyelles	4,327	4,150	117	15	36	9	3,229	3,110	74	12	28	5	2,558	2,488	52	18
Caldwell	10,132	8,213	1,778	30	64	47	7,758	6,314	1,336	23	51	34	6,324	5,351	911	62
Catahoula	10,407	6,985	3,318	9	53	42	8,057	5,543	2,438	8	43	25	6,380	4,749	1,596	35
*Concordia	13,657	9,767	3,704	39	88	59	10,431	7,417	2,884	25	69	36	8,220	6,290	1,818	111
Franklin	20,767	13,930	6,620	65	82	70	15,450	10,838	4,471	42	63	36	13,466	9,408	3,978	80
La Salle	14,890	12,689	1,808	40	215	138	11,366	9,677	1,402	35	143	109	8,427	7,648	621	158
*Ouachita	6,099	5,460	570	11	46	12	4,590	4,174	372	4	32	8	4,213	3,724	360	129
*Rapides	14,299	13,669	312	79	181	58	10,411	9,965	232	52	131	31	9,066	8,650	186	230
*Richland	2,341	1,868	437	12	7	17	1,741	1,429	292	5	7	8	1,539	1,252	274	13
West Feliciana	15,625	8,125	7,317	42	35	106	12,907	6,412	6,364	24	33	74	6,796	4,448	2,254	94
District 32	112,544	84,856	25,981	342	807	558	85,940	64,879	19,865	230	600	366	66,989	54,008	12,050	930
	100.000%	75.398%	23.085%	0.304%	0.717%	0.496%	100.000%	75.493%	23.115%	0.268%	0.698%	0.426%	77.949%	80.622%	17.988%	1.388%
District 33																
*Claiborne	10,858	4,425	6,311	45	51	26	8,924	3,762	5,078	27	43	14	4,995	2,431	2,504	60
*Lincoln	4,930	4,166	682	18	21	43	3,769	3,213	501	10	18	27	3,128	2,671	382	75
*Morehouse	17,667	11,662	5,740	107	78	80	13,376	9,327	3,867	75	60	47	11,635	8,195	3,264	176
*Ouachita	43,516	34,737	7,514	742	209	314	32,605	26,710	5,035	501	155	204	27,849	23,550	3,296	1,003
Union	22,721	15,682	6,242	49	115	633	17,493	12,568	4,439	31	91	364	14,964	10,863	3,709	392
West Carroll	11,604	9,497	1,870	34	86	117	8,746	7,254	1,330	24	62	76	7,167	6,017	1,096	54
District 33	111,296	80,169	28,359	995	560	1,213	84,913	62,834	20,250	668	429	732	69,738	53,727	14,251	1,760
	100.000%	72.032%	25.481%	0.894%	0.503%	1.090%	100.000%	73.998%	23.848%	0.787%	0.505%	0.862%	82.129%	77.041%	20.435%	2.524%
District 34																
*Concordia	7,165	2,192	4,900	20	35	18	5,158	1,881	3,233	16	19	9	4,476	1,707	2,711	59

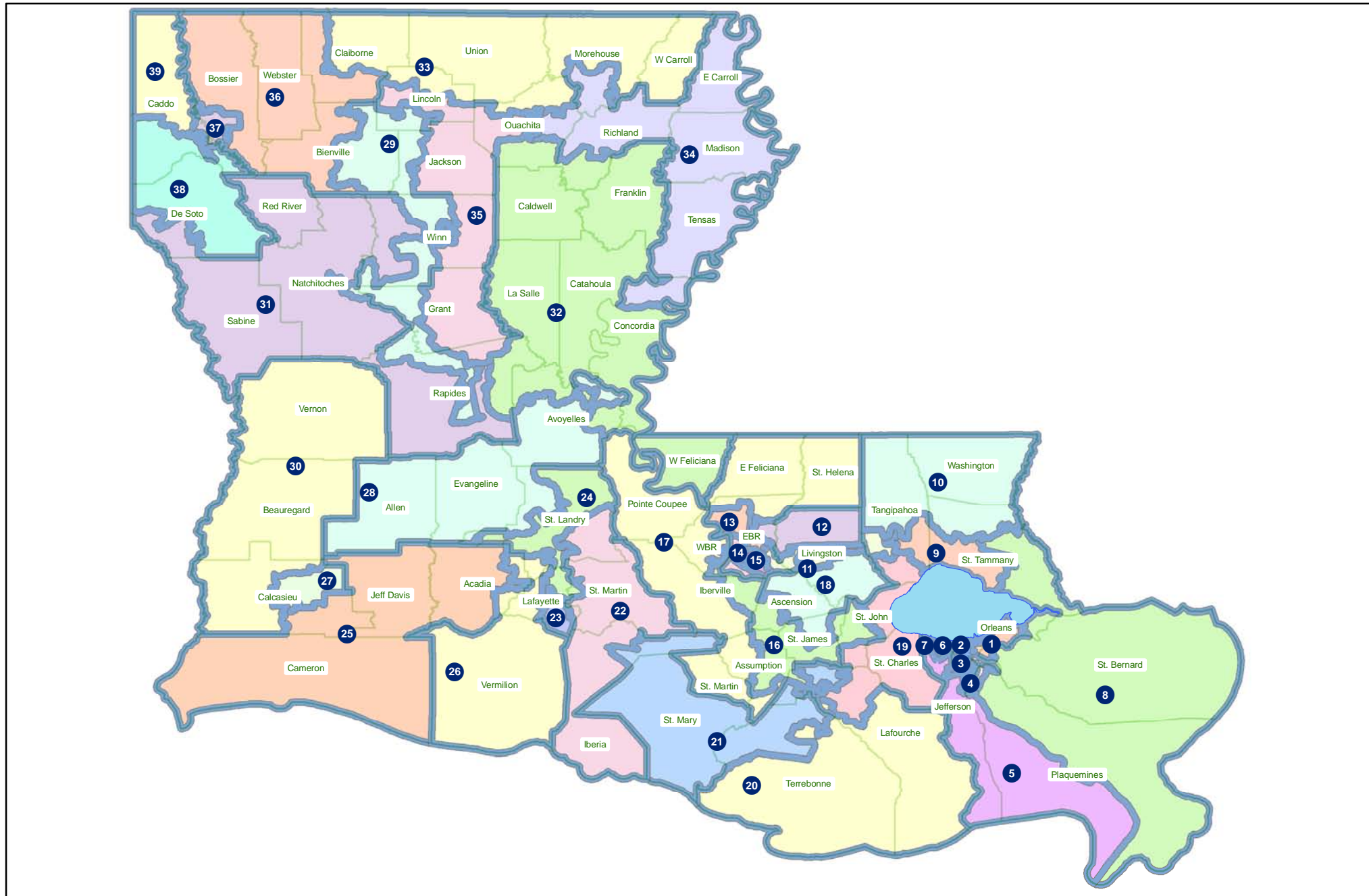
Splits

	Total Population	Total White	Total Black	Total Asian	Total American Indian	Total Other	VAP Total	VAP White	VAP Black	VAP Asian	VAP American Indian	VAP Other	Reg Total Jan 2011	Reg White Jan 2011	Reg Black Jan 2011	Reg Other Jan 2011
District 34																
East Carroll	7,759	2,245	5,398	47	31	38	5,766	1,845	3,830	37	25	29	5,330	1,617	3,664	49
Madison	12,093	4,498	7,452	33	55	55	9,071	3,644	5,312	20	45	50	7,634	2,780	4,764	90
*Morehouse	10,312	2,683	7,541	35	24	29	7,685	2,256	5,363	27	19	20	7,046	1,853	5,065	128
*Ouachita	56,646	11,706	43,997	424	162	357	40,226	9,995	29,497	359	123	252	32,855	6,589	24,940	1,326
*Richland	18,384	11,011	7,107	80	89	97	13,699	8,570	4,945	60	63	61	11,400	6,921	4,372	107
Tensas	5,252	2,202	2,991	13	15	31	3,923	1,796	2,085	11	9	22	4,131	1,807	2,304	20
District 34	117,611	36,537	79,386	652	411	625	85,528	29,987	54,265	530	303	443	72,872	23,274	47,820	1,779
	100.000%	31.066%	67.499%	0.554%	0.349%	0.531%	100.000%	35.061%	63.447%	0.620%	0.354%	0.518%	85.203%	31.938%	65.622%	2.441%
District 35																
*Grant	16,829	14,567	1,777	84	342	59	13,010	10,989	1,677	58	244	42	8,397	8,086	107	204
*Jackson	8,222	6,141	1,940	54	45	42	6,308	4,784	1,436	28	33	27	5,445	4,077	1,261	107
*Lincoln	21,679	16,775	3,951	502	139	312	17,536	13,602	3,185	408	105	236	11,517	9,620	1,469	428
*Ouachita	47,459	40,981	5,113	545	288	532	35,926	31,437	3,501	384	239	365	29,491	26,082	2,401	1,008
*Rapides	19,463	16,750	2,119	166	273	155	14,697	12,725	1,539	120	203	110	11,737	10,552	773	412
*Winn	1,546	1,494	35	0	15	2	1,185	1,145	26	0	13	1	939	922	12	5
District 35	115,198	96,708	14,935	1,351	1,102	1,102	88,662	74,682	11,364	998	837	781	67,526	59,339	6,023	2,164
	100.000%	83.949%	12.965%	1.173%	0.957%	0.957%	100.000%	84.232%	12.817%	1.126%	0.944%	0.881%	76.161%	87.876%	8.920%	3.205%
District 36																
*Bienville	7,898	5,375	2,378	22	87	36	6,021	4,164	1,752	18	69	18	5,024	3,439	1,549	36
*Bossier	58,064	46,651	9,252	806	578	777	42,974	34,811	6,712	551	425	475	33,320	27,159	4,964	1,197
*Claiborne	6,337	3,742	2,509	17	48	21	4,891	3,019	1,811	10	37	14	3,882	2,477	1,368	37
Webster	41,207	26,469	14,044	180	316	198	31,497	20,907	10,110	120	241	119	23,913	16,115	7,416	382
District 36	113,506	82,237	28,183	1,025	1,029	1,032	85,383	62,901	20,385	699	772	626	66,139	49,190	15,297	1,652
	100.000%	72.452%	24.830%	0.903%	0.907%	0.909%	100.000%	73.669%	23.875%	0.819%	0.904%	0.733%	77.462%	74.374%	23.129%	2.498%
District 37																
*Bossier	58,915	37,779	16,354	1,710	561	2,511	43,971	29,881	10,701	1,285	412	1,692	27,514	19,504	6,527	1,483
*Caddo	51,855	38,321	10,961	1,286	438	849	40,947	31,319	7,731	951	344	602	31,926	25,386	5,155	1,385
District 37	110,770	76,100	27,315	2,996	999	3,360	84,918	61,200	18,432	2,236	756	2,294	59,440	44,890	11,682	2,868
	100.000%	68.701%	24.659%	2.705%	0.902%	3.033%	100.000%	72.070%	21.706%	2.633%	0.890%	2.701%	69.997%	75.522%	19.653%	4.825%
District 38																
*Caddo	89,710	53,653	32,732	1,486	808	1,031	68,086	42,907	22,799	1,058	614	708	53,530	34,375	17,086	2,069
*De Soto	22,348	12,392	9,483	48	273	152	16,789	9,706	6,717	39	223	104	13,783	7,771	5,548	464
District 38	112,058	66,045	42,215	1,534	1,081	1,183	84,875	52,613	29,516	1,097	837	812	67,313	42,146	22,634	2,533
	100.000%	58.938%	37.672%	1.369%	0.965%	1.056%	100.000%	61.989%	34.776%	1.292%	0.986%	0.957%	79.308%	62.612%	33.625%	3.763%
District 39																
*Caddo	113,404	32,968	78,536	458	660	782	83,282	26,522	55,372	354	497	537	65,918	19,402	44,467	2,049

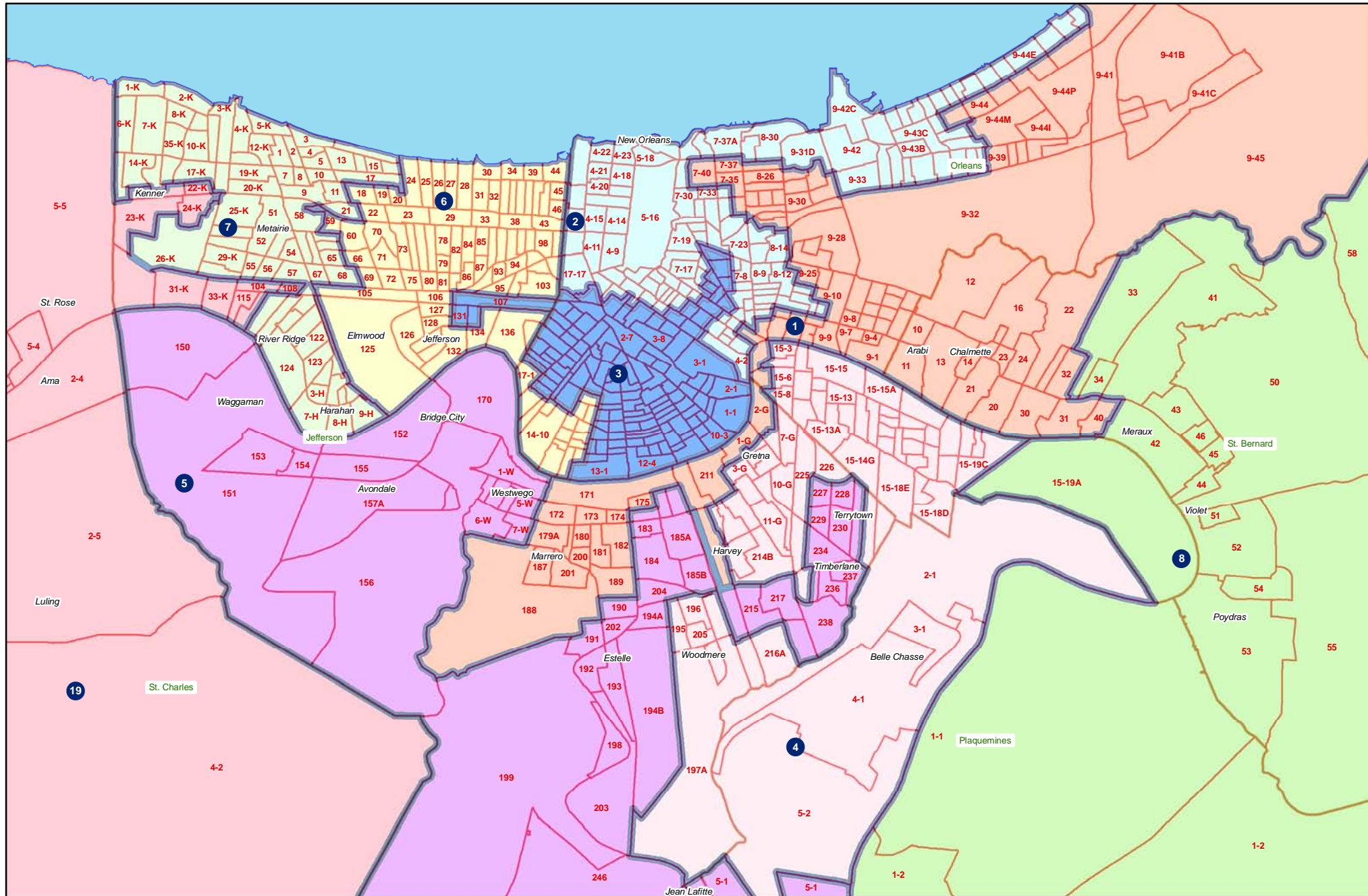
Splits

	Total Population	Total White	Total Black	Total Asian	Total American Indian	Total Other	VAP Total	VAP White	VAP Black	VAP Asian	VAP American Indian	VAP Other	Reg Total Jan 2011	Reg White Jan 2011	Reg Black Jan 2011	Reg Other Jan 2011
District 39	113,404 100.000%	32,968 29.071%	78,536 69.253%	458 0.404%	660 0.582%	782 0.690%	83,282 100.000%	26,522 31.846%	55,372 66.487%	354 0.425%	497 0.597%	537 0.645%	65,918 79.150%	19,402 29.434%	44,467 67.458%	2,049 3.108%

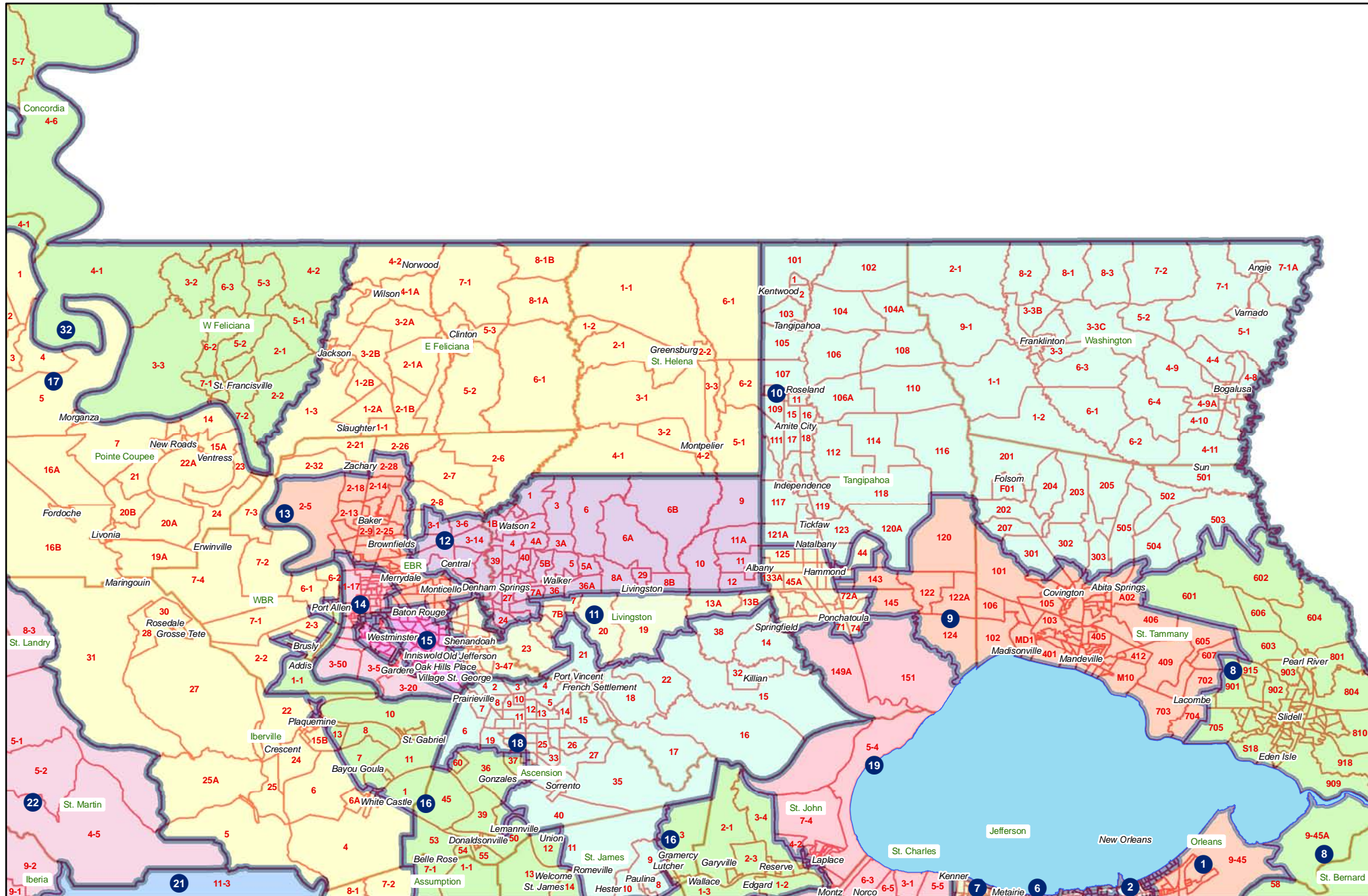
Statewide



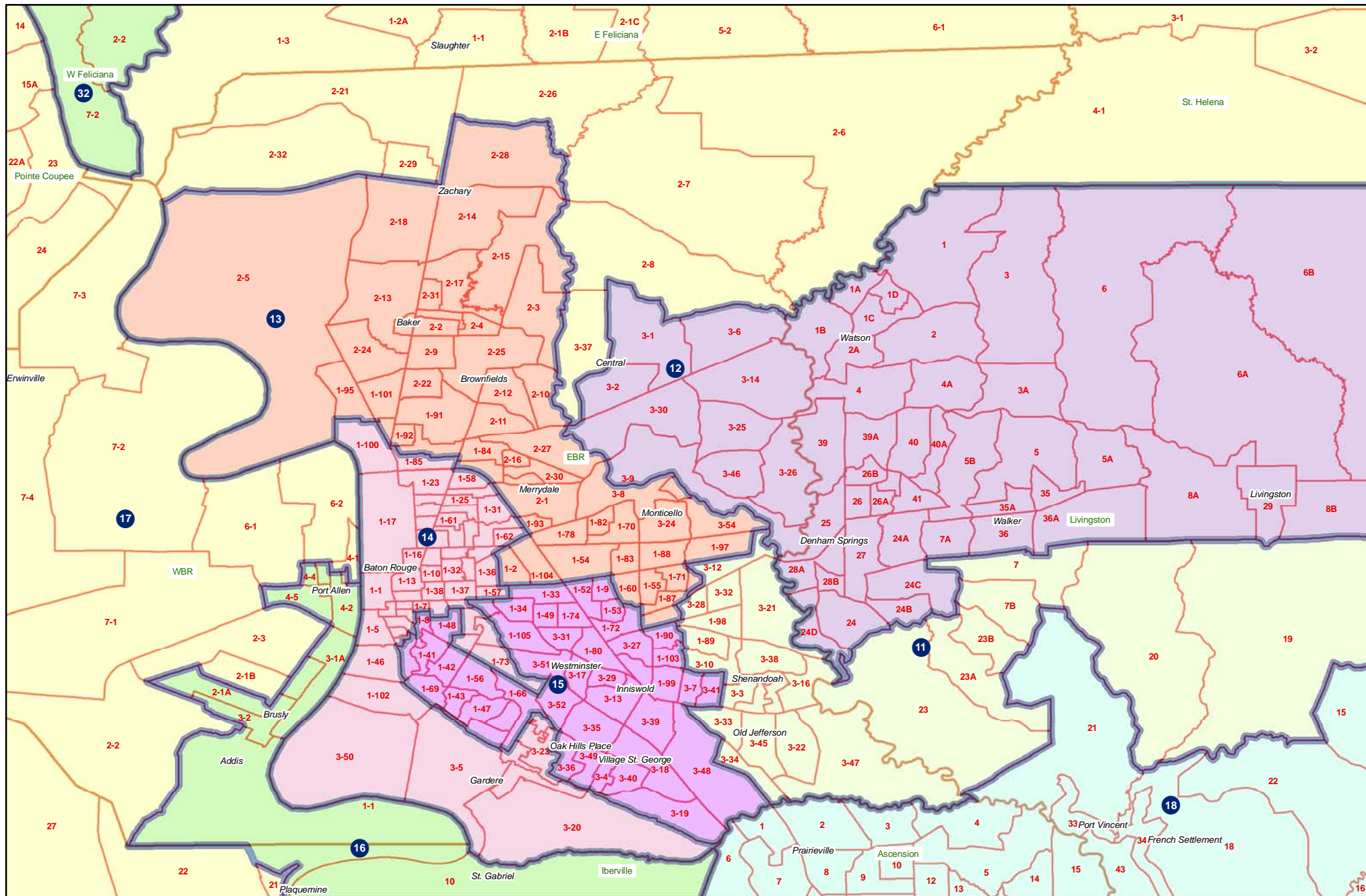
Jefferson Orleans



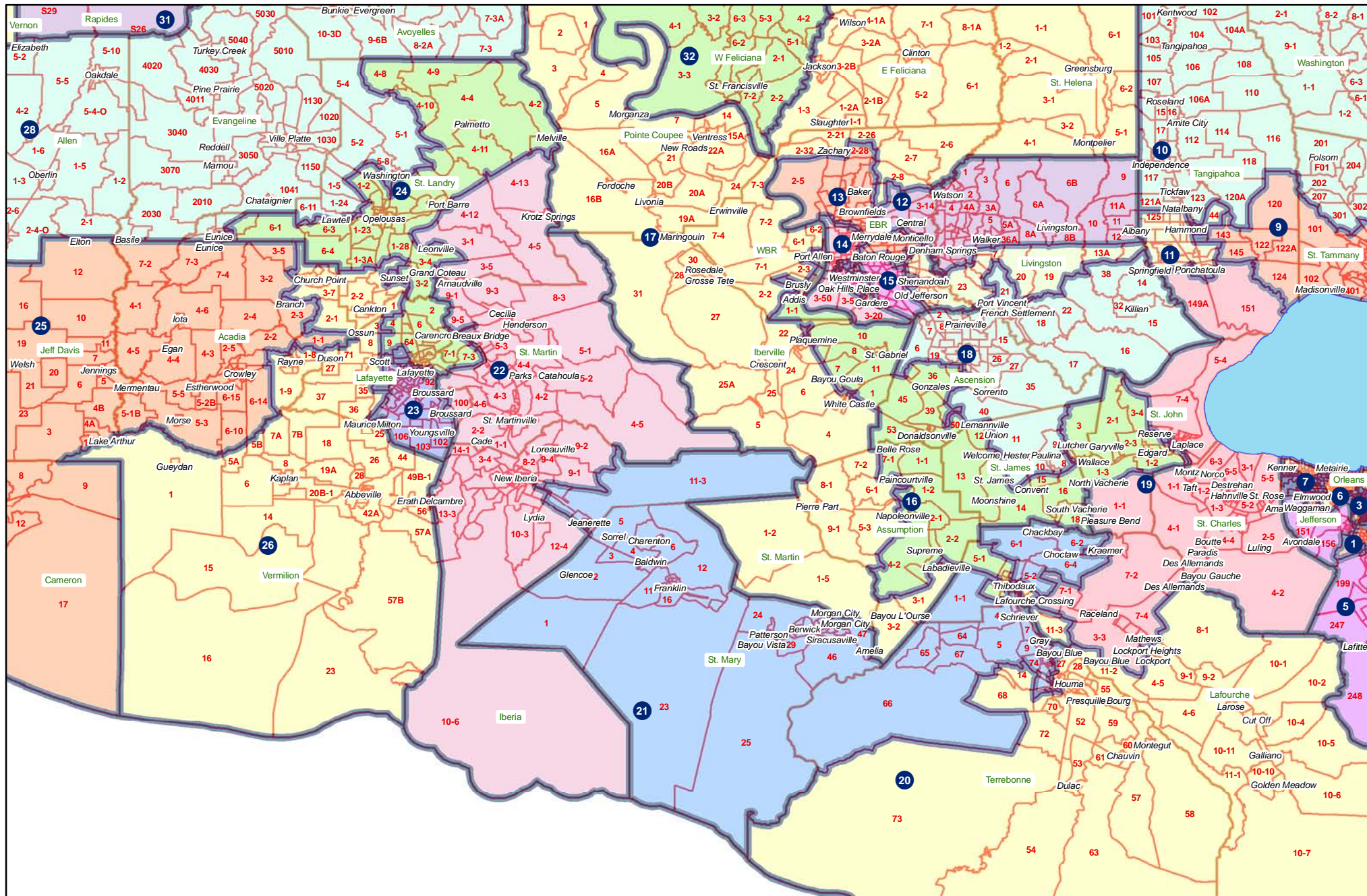
Florida Parishes



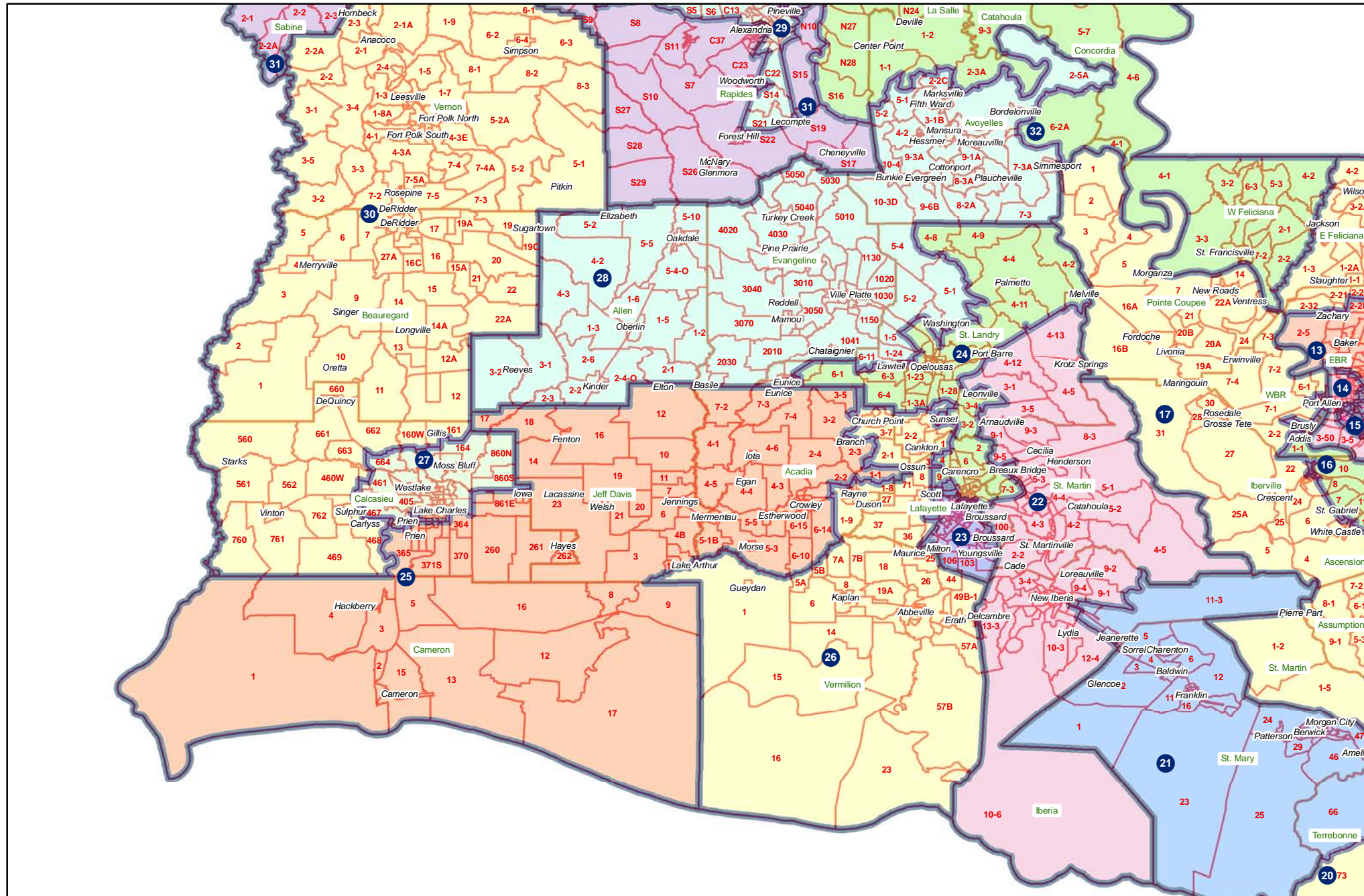
Baton Rouge



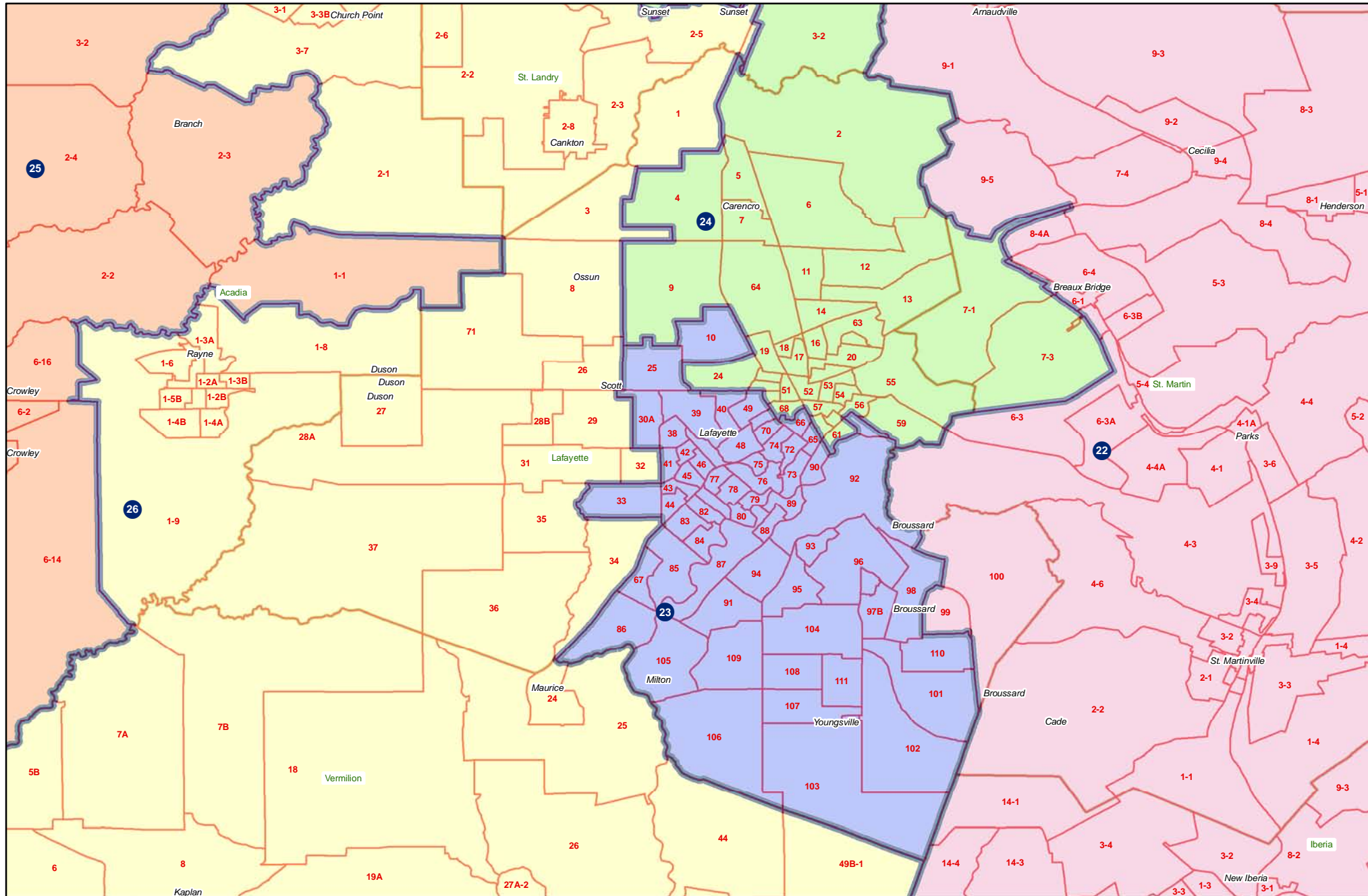
Acadiana/Bayou/River



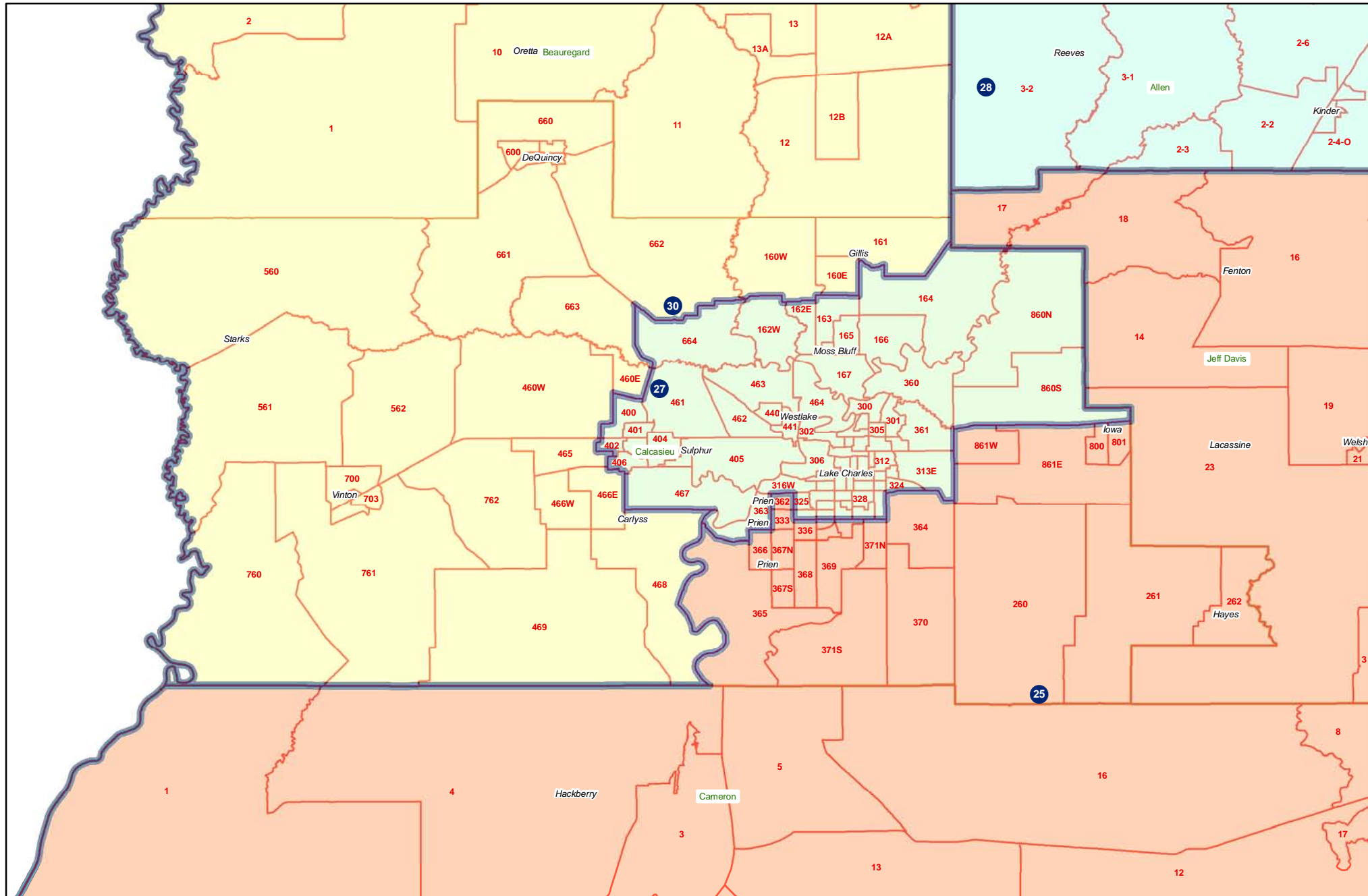
Southwest



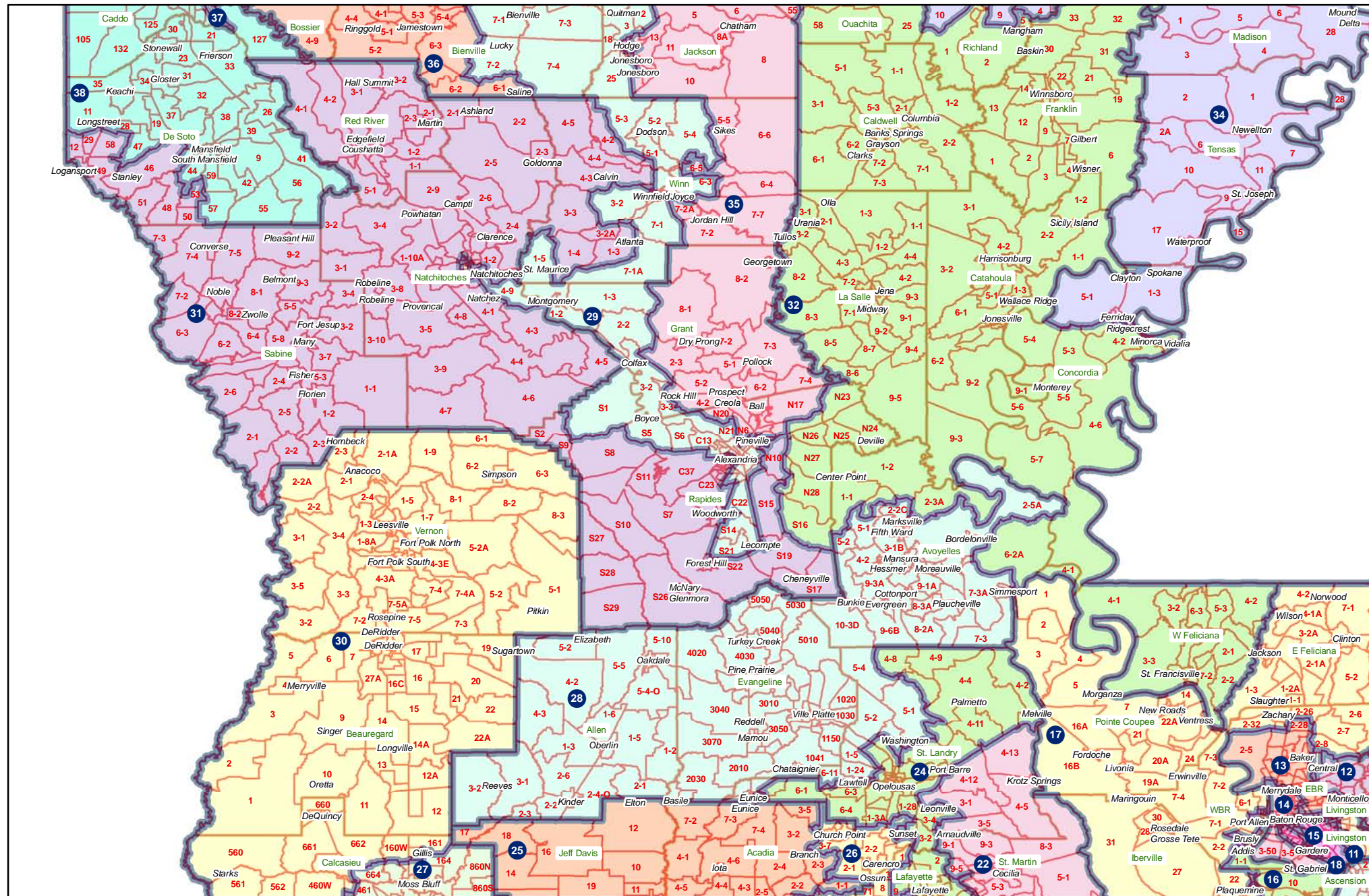
Lafayette



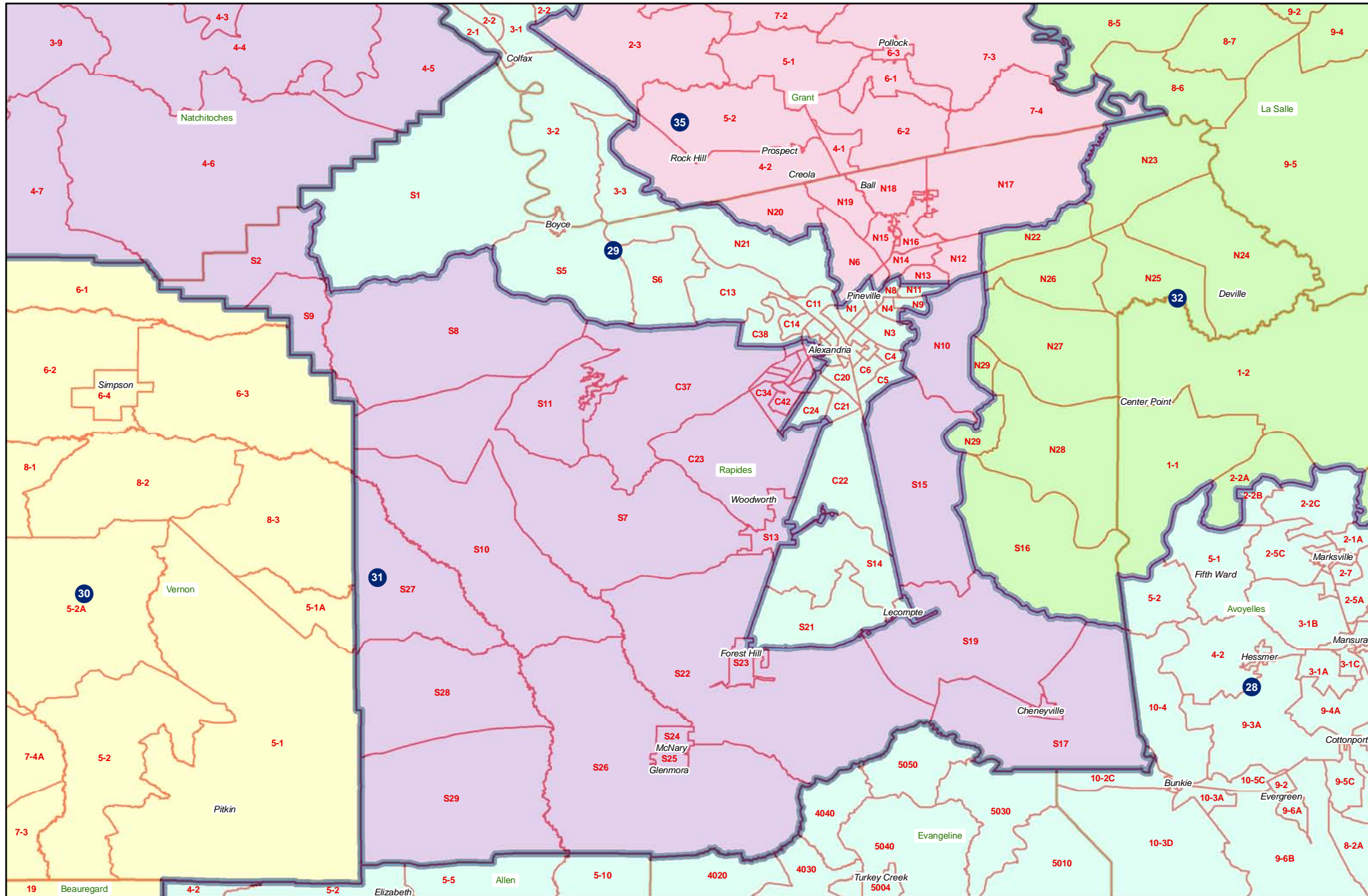
Calcasieu



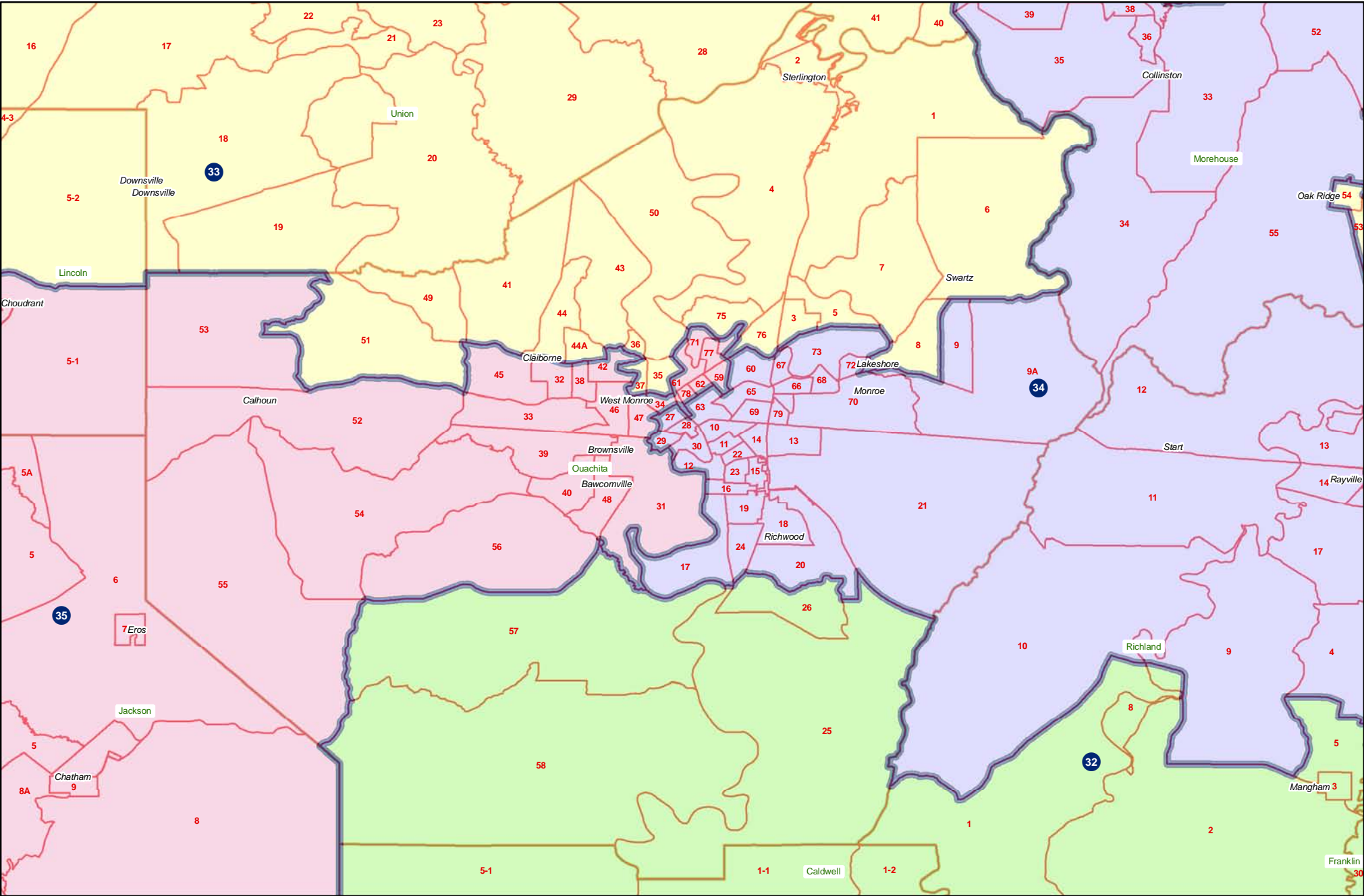
Central



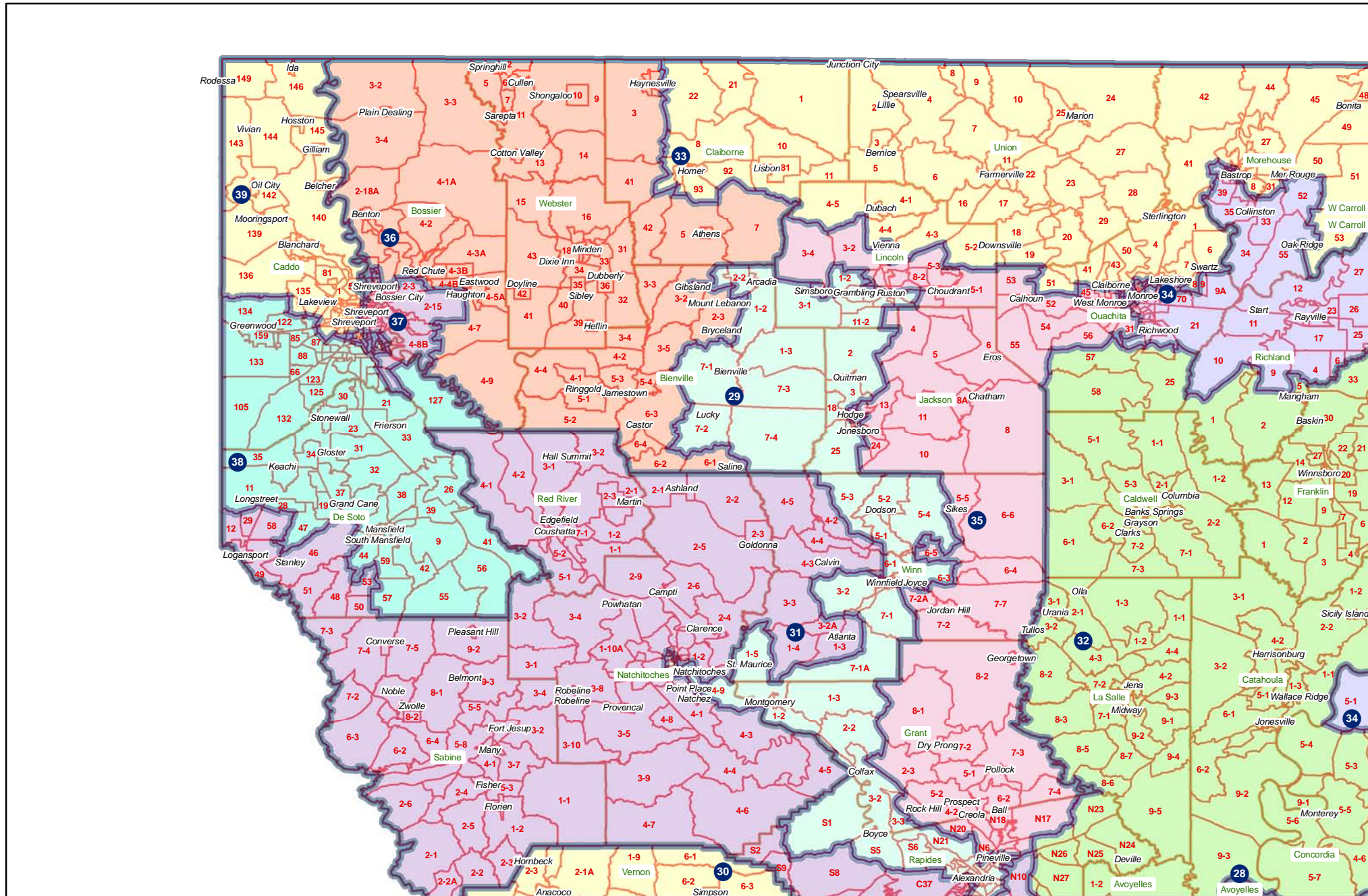
Rapides



Ouachita



Northwest



Shreveport

