

First Extraordinary Session, 2011

HOUSE BILL NO. 6

BY REPRESENTATIVE PONTI

REAPPORTIONMENT/CONGRESS: Provides relative to the districts for elected members of the United States Congress (Item #3)

1 AN ACT

2 To enact R.S. 18:1276.1 and to repeal R.S. 18:1276, relative to congressional districts; to
3 provide for the redistricting of Louisiana's congressional districts; to provide with
4 respect to positions and offices, other than congressional, which are based upon
5 congressional districts; to provide for the effectiveness; and to provide for related
6 matters.

7 Be it enacted by the Legislature of Louisiana:

8 Section 1. R.S. 18:1276.1 is hereby enacted to read as follows:

9 §1276.1. Congressional districts

10 Louisiana shall be divided into six congressional districts, and the qualified
11 electors of each district shall elect one representative to the United States House of
12 Representatives. The districts shall be composed as follows:

- 13 (1) District 1 is composed of Precincts 1, 2, 3, 4, 5, 7, 8, 9, 10, 11, 12, 13, 14,
- 14 15, 16, 17, 18, 19, 20, 21, 22, 23, 24, 25, 26, 27, 28, 29, 30, 31, 32, 33, 34, 35, 36, 37,
- 15 38, 39, 40, 41, 42, 43, 44, 45, 46, 51, 52, 53, 54, 55, 56, 58, 59, 60, 61, 62, 63, 64, 65,
- 16 66, 67, 68, 69, 70, 71, 72, 73, 74, 75, 76, 77, 78, 79, 80, 81, 82, 83, 84, 85, 86, 87, 88,
- 17 89, 90, 91, 92, 93, 94, 95, 96, 97, 98, 99, 100, 101, 102, 103, 105, 106, 117, 118, 119,
- 18 120, 121, 122, 123, 124, 125, 126, 127, 128, 129, 130, 132, 134, 136, 192, 198, 199,
- 19 246, 247, 248, 1-GI, 1-H, 2-H, 3-H, 4-H, 5-H, 6-H, 7-H, 8-H, 9-H, 1-K, 2-K, 3-K,
- 20 4-K, 5-K, 6-K, 7-K, 8-K, 9-K, 10-K, 11-K, 12-K, 13-KA, 14-K, 16-K, 17-K, 18-K,

1 19-K, 20-K, 25-K, 27-K, 28-K, 34-K, 35-K and 1-L of Jefferson Parish; Lafourche
2 Parish; Precincts 4-8, 4-9, 4-11, 4-14, 4-15, 4-17, 4-17A, 4-18, 4-20, 4-21, 4-22,
3 4-23, 5-13, 5-15, 5-16, 5-17, 5-18, 7-41, 7-42, 14-2, 14-3, 14-4, 14-5, 14-6, 14-7,
4 14-8, 14-9, 14-10, 14-11, 14-14, 14-15, 14-16, 14-17, 14-20, 16-1, 16-1A, 16-2,
5 16-3, 16-4, 17-1, 17-17, 17-18, 17-18A, 17-19 and 17-20 of Orleans Parish;
6 Plaquemines Parish; St. Bernard Parish; Precincts 101, 102, 103, 104, 105, 106, 107,
7 202, 207, 301, 302, 303, 304, 305, 306, 307, 308, 309, 310, 311, 312, 313, 401, 402,
8 403, 404, 405, 406, 407, 408, 409, 410, 411, 412, 413, 414, 415, 416, 417, 418, 419,
9 420, 421, 422, 423, 424, 426, 427, 601, 602, 603, 604, 605, 606, 607, 701, 702, 703,
10 704, 705, 706, 801, 802, 803, 804, 805, 806, 807, 808, 809, 810, 811, 812, 813, 814,
11 815, 816, 817, 901, 902, 903, 904, 905, 906, 907, 908, 909, 910, 911, 912, 913, 914,
12 915, 916, 917, 918, 921, A01, A02, A03, A04, C01, C02, C03, C04, C05, C06, C07,
13 C08, C09, C10, C11, M01, M02, M03, M04, M05, M06, M07, M08, M09, M10,
14 MD1, P01, S01, S02, S03, S04, S05, S06, S07, S08, S09, S10, S11, S12, S13, S15,
15 S16, S17, S18, S19, S21, S22, S23, S24 and S25 of St. Tammany Parish; and
16 Terrebonne Parish.

17 (2) District 2 is composed of Precincts 28, 36, 37, 39, 42, 44, 45, 47, 48, 49,
18 50, 51, 52, 53, 54, 55, 56 and 57 of Ascension Parish; Precincts 1-1, 1-2, 2-1, 2-2,
19 5-1, 5-2 and 6-2 of Assumption Parish; Precincts 1-1, 1-2, 1-3, 1-4, 1-5, 1-6, 1-10,
20 1-13, 1-14, 1-15, 1-16, 1-17, 1-18, 1-19, 1-21, 1-22, 1-23, 1-24, 1-25, 1-26, 1-27,
21 1-28, 1-29, 1-30, 1-31, 1-32, 1-36, 1-37, 1-38, 1-45, 1-50, 1-51, 1-58, 1-61, 1-62,
22 1-63, 1-67, 1-77, 1-84, 1-85, 1-86, 1-91, 1-92, 1-93, 1-94, 1-95, 1-100, 1-101, 1-104,
23 2-1, 2-2, 2-9, 2-11, 2-16, 2-22, 2-23, 2-24, 2-27 and 2-30 of East Baton Rouge
24 Parish; Precincts 1, 2, 3, 6, 7, 8, 10, 11, 12, 13A, 13B, 13C, 14A, 15, 16, 19, 19A, 20,
25 21, 22 and 23 of Iberville Parish; Precincts 57, 104, 107, 108, 115, 116, 131, 133,
26 138, 150, 151, 152, 153, 154, 155, 156, 157A, 157B, 170, 171, 172, 173, 174, 175,
27 176, 177, 178, 179A, 179B, 180, 181, 182, 183, 184, 185A, 185B, 187, 188, 189,
28 190, 191, 193, 194A, 194B, 195, 196, 197A, 197B, 197C, 200, 201, 202, 203, 204,
29 205, 210, 211, 212A, 212B, 213A, 213B, 213C, 214A, 214B, 215, 216A, 216B, 217,

1 225, 226, 227, 228, 229, 230, 231, 232A, 232B, 234, 235, 236, 237, 238, 1-G, 2-G,
2 3-G, 4-G, 5-G, 6-G, 7-G, 8-G, 9-G, 10-G, 11-G, 12-G, 13-G, 13-KB, 15-K, 21-K,
3 22-K, 23-K, 24-K, 26-K, 29-K, 30-K, 31-K, 33-K, 1-W, 2-W, 3-W, 4-W, 5-W, 6-W
4 and 7-W of Jefferson Parish; Precincts 1-1, 1-2, 1-5, 1-6, 2-1, 2-2, 2-3, 2-4, 2-6,
5 2-6A, 2-7, 3-1, 3-3, 3-5, 3-8, 3-9, 3-12, 3-14, 3-15, 3-18, 3-19, 3-20, 4-2, 4-3, 4-4,
6 4-5, 4-6, 4-7, 5-1, 5-2, 5-3, 5-4, 5-5, 5-7, 5-8, 5-9, 5-10, 5-11, 5-12, 6-1, 6-2, 6-4, 6-6,
7 6-7, 6-8, 6-9, 7-1, 7-2, 7-4, 7-5, 7-6, 7-7, 7-8, 7-9A, 7-10, 7-11, 7-12, 7-13, 7-14,
8 7-15, 7-16, 7-17, 7-18, 7-19, 7-20, 7-21, 7-23, 7-24, 7-25, 7-25A, 7-26, 7-27, 7-27B,
9 7-28, 7-28A, 7-29, 7-30, 7-32, 7-33, 7-34, 7-35, 7-37, 7-37A, 7-40, 8-1, 8-2, 8-4, 8-6,
10 8-7, 8-8, 8-9, 8-12, 8-13, 8-14, 8-15, 8-19, 8-20, 8-21, 8-22, 8-23, 8-24, 8-25, 8-26,
11 8-27, 8-28, 8-30, 9-1, 9-3, 9-3A, 9-4, 9-5, 9-5A, 9-6B, 9-6C, 9-6D, 9-6E, 9-6F, 9-7,
12 9-8, 9-8A, 9-9, 9-10, 9-11, 9-12, 9-13, 9-14, 9-15, 9-16, 9-17, 9-19, 9-21, 9-23, 9-25,
13 9-26, 9-28, 9-28C, 9-28E, 9-29, 9-30, 9-30A, 9-31, 9-31A, 9-31B, 9-31D, 9-32, 9-33,
14 9-34A, 9-35, 9-35A, 9-36, 9-36B, 9-37, 9-38, 9-38A, 9-39, 9-39B, 9-40, 9-40A,
15 9-40C, 9-41, 9-41A, 9-41B, 9-41C, 9-41D, 9-42, 9-42C, 9-43A, 9-43B, 9-43C,
16 9-43E, 9-43F, 9-43G, 9-43H, 9-43I, 9-43J, 9-43K, 9-43L, 9-43M, 9-43N, 9-44,
17 9-44A, 9-44B, 9-44D, 9-44E, 9-44F, 9-44G, 9-44I, 9-44J, 9-44L, 9-44M, 9-44N,
18 9-44O, 9-44P, 9-44Q, 9-45, 9-45A, 10-3, 10-6, 10-7, 10-8, 10-9, 10-11, 10-12,
19 10-13, 10-14, 11-2, 11-3, 11-4, 11-5, 11-8, 11-9, 11-10, 11-11, 11-12, 11-13, 11-14,
20 11-17, 12-1, 12-2, 12-3, 12-4, 12-5, 12-6, 12-7, 12-8, 12-9, 12-10, 12-11, 12-12,
21 12-13, 12-14, 12-16, 12-17, 12-19, 13-1, 13-2, 13-3, 13-4, 13-5, 13-6, 13-7, 13-8,
22 13-9, 13-10, 13-11, 13-12, 13-13, 13-14, 13-15, 13-16, 14-1, 14-12, 14-13A, 14-18A,
23 14-19, 14-21, 14-23, 14-24A, 14-25, 14-26, 15-1, 15-2, 15-3, 15-5, 15-6, 15-8, 15-9,
24 15-10, 15-11, 15-12, 15-12A, 15-13, 15-13A, 15-13B, 15-14, 15-14A, 15-14B,
25 15-14C, 15-14D, 15-14E, 15-14F, 15-14G, 15-15, 15-15A, 15-15B, 15-16, 15-17,
26 15-17A, 15-17B, 15-18, 15-18A, 15-18B, 15-18C, 15-18D, 15-18E, 15-18F, 15-19,
27 15-19A, 15-19B, 15-19C, 16-5, 16-6, 16-7, 16-8, 16-9, 17-2, 17-3, 17-4, 17-5, 17-6,
28 17-7, 17-8, 17-9, 17-10, 17-11, 17-12, 17-13, 17-13A, 17-14, 17-15 and 17-16 of
29 Orleans Parish; Precincts 1-1, 1-2, 1-3, 1-5, 2-1, 2-2, 2-3, 2-4, 2-5, 4-1, 4-2, 4-3, 4-4,

1 7-1, 7-2, 7-3 and 7-4 of St. Charles Parish; St. James Parish; Precincts 1-1, 1-2, 1-3,
2 1-4, 1-5, 2-1, 2-2, 2-3, 2-4, 3-1, 3-2, 3-3, 3-4, 4-1, 4-2, 4-3, 4-8, 4-9, 5-2, 5-5, 6-1,
3 6-3, 6-4, 7-5 and 7-7 of St. John the Baptist Parish; and Precincts 1-1, 3-1A, 4-2, 4-4,
4 4-5 and 5-1 of West Baton Rouge Parish.

5 (3) District 3 is composed of Precincts 1-1, 1-2A, 1-2B, 1-3A, 1-3B, 1-4A,
6 1-4B, 1-5A, 1-5B, 1-6, 1-7, 1-8, 1-9, 2-2, 2-3, 2-4, 2-5, 4-3, 4-4, 4-5, 5-1A, 5-1B,
7 5-2A, 5-2B, 5-3, 5-4, 5-5, 6-1, 6-2, 6-3A, 6-3B, 6-4, 6-5, 6-6, 6-7, 6-8, 6-9, 6-10,
8 6-11, 6-12, 6-13, 6-14, 6-15 and 6-16 of Acadia Parish; Precincts 2-3, 3-1, 3-2, 4-1,
9 4-2, 5-3, 5-4, 6-1, 7-1, 7-2, 8-1 and 9-1 of Assumption Parish; Calcasieu Parish;
10 Cameron Parish; Iberia Parish; Precincts 4, 5, 6A, 13, 14, 14B, 15A, 15B, 17, 17A,
11 18, 24, 25, 25A, 25B, 26, 26A, 27, 28, 29, 30, 31 and 32 of Iberville Parish; Precincts
12 1, 2, 3, 4A, 4B, 5, 6, 7, 8, 9A, 9B, 17, 19, 20, 21 and 23 of Jefferson Davis Parish;
13 Lafayette Parish; St. Martin Parish; St. Mary Parish; and Vermilion Parish.

14 (4) District 4 is composed of Precincts 2-1, 3-1, 3-2, 3-3A, 3-3B, 3-4, 3-5,
15 3-6, 3-7, 4-1, 4-2, 4-6, 7-2, 7-3 and 7-4 of Acadia Parish; Allen Parish; Beauregard
16 Parish; Bossier Parish; Caddo Parish; De Soto Parish; Evangeline Parish; Precincts
17 10, 11, 12, 13, 14, 16 and 18 of Jefferson Davis Parish; Natchitoches Parish;
18 Precincts C5, C13, C20, C21, C22, C23, C24, C25, C30, C31, C32, C33, C34, C35,
19 C36, C37, C41, C42, S1, S2, S4, S5, S6, S7, S8, S9, S10, S11, S13, S14, S15, S16,
20 S17, S18, S19, S20, S21, S22, S23, S24, S25, S26, S27, S28 and S29 of Rapides
21 Parish; Red River Parish; Sabine Parish; Precincts 6-1, 6-2, 6-5, 6-6, 6-7, 6-8, 6-9,
22 6-10, 6-13, 6-14, 6-15, 6-16 and 6-16A of St. Landry Parish; Vernon Parish; and
23 Webster Parish.

24 (5) District 5 is composed of Avoyelles Parish; Bienville Parish; Caldwell
25 Parish; Catahoula Parish; Claiborne Parish; Concordia Parish; East Carroll Parish;
26 East Feliciana Parish; Franklin Parish; Grant Parish; Jackson Parish; La Salle Parish;
27 Lincoln Parish; Madison Parish; Morehouse Parish; Ouachita Parish; Pointe Coupee
28 Parish; Precincts C1, C2, C3, C4, C6, C7, C8, C9, C10, C11, C14, C15, C17, C18,
29 C19, C26, C27, C28, C38, C39, C40, N1, N2, N3, N4, N5, N6, N7, N8, N9, N10,

1 N11, N12, N13, N14, N15, N16, N17, N18, N19, N20, N21, N22, N23, N24, N25,
2 N26, N27, N28 and N29 of Rapides Parish; Richland Parish; St. Helena Parish;
3 Precincts 1-1, 1-2, 1-2A, 1-3, 1-3A, 1-4, 1-4A, 1-5, 1-6, 1-7, 1-8, 1-9, 1-10, 1-11,
4 1-12, 1-13, 1-14, 1-15, 1-15A, 1-16, 1-17, 1-18, 1-19, 1-20, 1-21, 1-22, 1-23, 1-24,
5 1-25, 1-26, 1-26A, 1-28, 1-28A, 1-29, 2-1, 2-2, 2-3, 2-4, 2-5, 2-6, 2-7, 2-8, 2-9, 3-1,
6 3-2, 3-3, 3-4, 3-5, 3-6, 4-2, 4-3, 4-4, 4-5, 4-6, 4-7, 4-8, 4-9, 4-10, 4-11, 4-12, 4-12A,
7 4-13, 5-1, 5-2, 5-3, 5-4, 5-5, 5-6, 5-8, 6-3, 6-4, 6-11 and 6-11A of St. Landry Parish;
8 Precincts 1, 2, 6, 11, 15, 16, 101, 103, 105, 107, 109, 109A and 111 of Tangipahoa
9 Parish; Tensas Parish; Union Parish; Precincts 2-1A, 2-1B, 2-2, 2-3, 3-1B, 3-2, 4-1,
10 4-3A, 4-3B, 6-1, 6-2, 7-1, 7-2, 7-3 and 7-4 of West Baton Rouge Parish; West
11 Carroll Parish; West Feliciana Parish; and Winn Parish.

12 (6) District 6 is composed of Precincts 1, 2, 3, 4, 5, 6, 7, 8, 9, 10, 11, 12, 13,
13 14, 15, 16, 17, 18, 19, 20, 21, 22, 23, 24, 25, 26, 27, 30, 31, 32, 33, 34, 35, 40, 41, 43,
14 58, 60 and 61 of Ascension Parish; Precincts 1-7, 1-8, 1-9, 1-12, 1-33, 1-34, 1-35,
15 1-39, 1-40, 1-41, 1-42, 1-43, 1-44, 1-46, 1-47, 1-48, 1-49, 1-52, 1-53, 1-54, 1-55,
16 1-56, 1-57, 1-59, 1-60, 1-64, 1-65, 1-66, 1-68, 1-69, 1-70, 1-71, 1-72, 1-73, 1-74,
17 1-75, 1-78, 1-80, 1-81, 1-82, 1-83, 1-87, 1-88, 1-89, 1-90, 1-97, 1-98, 1-99, 1-102,
18 1-103, 1-105, 1-107, 2-3, 2-4, 2-5, 2-6, 2-7, 2-8, 2-10, 2-12, 2-13, 2-14, 2-15, 2-17,
19 2-18, 2-19, 2-20, 2-21, 2-25, 2-26, 2-28, 2-29, 2-31, 2-32, 3-1, 3-2, 3-3, 3-4, 3-5, 3-6,
20 3-7, 3-8, 3-9, 3-10, 3-11, 3-12, 3-13, 3-14, 3-15, 3-16, 3-17, 3-18, 3-19, 3-20, 3-21,
21 3-22, 3-23, 3-24, 3-25, 3-26, 3-27, 3-28, 3-29, 3-30, 3-31, 3-32, 3-33, 3-34, 3-35,
22 3-36, 3-37, 3-38, 3-39, 3-40, 3-41, 3-42, 3-43, 3-44, 3-45, 3-46, 3-47, 3-48, 3-49,
23 3-50, 3-51, 3-52, 3-53, 3-54 and 3-55 of East Baton Rouge Parish; Livingston Parish;
24 Precincts 1-6, 3-1, 3-2, 3-3, 3-4, 3-5, 3-6, 5-1, 5-2, 5-3, 5-4, 5-5, 6-1, 6-2, 6-3, 6-4,
25 6-5, 6-6, 6-7 and 6-8 of St. Charles Parish; Precincts 4-4, 5-1, 5-3, 5-4, 5-6, 5-7, 7-2,
26 7-3 and 7-4 of St. John the Baptist Parish; Precincts 201, 203, 204, 205, 206, 501,
27 502, 503, 504, 505 and F01 of St. Tammany Parish; Precincts 17, 18, 26, 27, 27A,
28 28, 28A, 33, 40, 40A, 41, 42, 42A, 43, 44, 45, 45A, 46, 47, 48, 49, 70, 70A, 71, 72,
29 72A, 73, 74, 102, 104, 104A, 106, 106A, 106B, 108, 110, 111A, 112, 114, 115B,

1 116, 117, 118, 119, 120, 120A, 120B, 121, 121A, 121B, 122, 122A, 123, 124, 125,
2 127, 127A, 129, 129A, 133, 133A, 137, 137A, 137B, 137C, 137D, 139, 141, 141A,
3 143, 145, 149, 149A and 151 of Tangipahoa Parish; and Washington Parish.

4 Section 2.(A) The precincts referenced in this Act are those Voting Districts (VTDs)
5 contained in the 2010 Census Redistricting TIGER/Line Shapefiles for the State of
6 Louisiana.

7 (B) When a precinct referenced in this Act has been subdivided by action of the
8 parish governing authority on a nongeographic basis or subdivided by action of the parish
9 governing authority on a geographic basis in accordance with the provisions of R.S.
10 18:532.1, the enumeration in this Act of the general precinct designation shall include all
11 nongeographic and all geographic subdivisions thereof, however such subdivisions may be
12 designated. The territorial limits of the districts as provided in this Act shall continue in
13 effect without change regardless of any changes made to the precincts by the parish
14 governing authority.

15 Section 3. The provisions of this Act shall not reduce the term of office of any
16 person holding any position or office on the effective date of this Section, for which the
17 appointment or election is based upon a congressional district as composed pursuant to R.S.
18 18:1276. Any position or office filled after January 3, 2013, for which the appointment or
19 election is based on a congressional district shall be appointed or elected from a district as
20 it is described in this Act.

21 Section 4. R.S. 18:1276 is hereby repealed in its entirety.

22 Section 5.(A) The provisions of Section 1 of this Act shall become effective solely
23 for the purposes of the election of representatives to the United States Congress at the next
24 regularly scheduled election for representatives to the congress in 2012, commencing on the
25 date and at the time that the qualifying period opens for such offices. The effectiveness of
26 Section 1 of this Act for such purposes shall not reduce the term of office of any member of
27 the congress elected at the 2010 congressional election or elected to fill a vacancy for the
28 remainder of a term which began on January 3, 2011, or change the district which any
29 member of congress represents pursuant to R.S. 18:1276. For subsequent elections of

1 representatives to the United States Congress and for all other purposes, the provisions of
2 Section 1 of this Act shall become effective at noon on the third day of January in 2013.

3 (B) The provisions of Section 4 of this Act shall become effective at noon on the
4 third day of January in 2013.

5 (C) The provisions of this Section and Sections 2 and 3 of this Act shall become
6 effective upon signature of this Act by the governor or, if not signed by the governor, upon
7 expiration of the time for bills to become law without signature by the governor, as provided
8 in Article III, Section 18 of the Constitution of Louisiana. If this Act is vetoed by the
9 governor and subsequently approved by the legislature, the provisions of this Section and
10 Sections 2 and 3 of this Act shall become effective on the day following such approval.

DIGEST

The digest printed below was prepared by House Legislative Services. It constitutes no part of the legislative instrument. The keyword, one-liner, abstract, and digest do not constitute part of the law or proof or indicia of legislative intent. [R.S. 1:13(B) and 24:177(E)]

Ponti

HB No. 6

Abstract: Provides for the redistricting of the state's congressional districts and provides for the composition of each of the six congressional districts. Effective for election purposes only for the regular congressional elections in 2012 and for all purposes on January 3, 2013.

Statistical summaries of the proposed law, including district variances from the ideal population of 755,562 and the range of those variances, as well as maps illustrating proposed district boundaries accompany this digest. (*Attached to hard copies of the bill distributed during session and available as a separate document on the Internet.*)

Present U.S. Constitution (14th Amendment) provides that representatives in congress shall be apportioned among the several states according to their respective numbers, counting the whole number of persons in each state. The U.S. Supreme Court has held that the population of congressional districts in the same state must be as nearly equal in population as practicable.

Present law divides the state into seven districts for election of Louisiana's representatives to the U.S. House of Representatives.

Proposed law redraws district boundaries for the six congressional districts, effective for election purposes with the opening of the qualifying period for the 2012 primary election for members of congress.

Proposed law specifies that precincts referenced in district descriptions are those precincts identified as Voting Districts (VTDs) in the 2010 Census Redistricting TIGER/Line Shapefiles for the state of La. Also specifies that if any such precinct has been subdivided by action of the parish governing authority on a nongeographic basis or subdivided by action of the parish governing authority on a geographic basis in accordance with present law, the enumeration of the general precinct designation shall include all nongeographic and all

geographic subdivisions thereof. Further provides that the territorial limits of the districts as enacted shall continue in effect without change regardless of any changes made to the precincts by the parish governing authority.

Proposed law specifies that the effectiveness of the law for 2012 election purposes does not reduce the term of congressmen elected at the 2010 congressional election or elected to fill a vacancy for the remainder of a term which began on January 3, 2011. Further specifies that the provisions of proposed law shall not reduce the term of office of any person holding any position or office on the effective date of proposed law, for which the appointment or election is based upon a congressional district as composed pursuant to present law. Specifies that any position or office filled after January 3, 2013, for which the appointment or election is based on a congressional district shall be appointed or elected from a district as it is described in proposed law.

Proposed law retains present districts until noon on January 3, 2013, at which time present law is repealed and proposed districts are effective for all purposes.

Population data in the summaries accompanying this digest are derived from 2010 Census Redistricting Data (Public Law 94-171), Summary File for Louisiana. Population data, statistical information, and maps are supplied for purposes of information and analysis and comprise no part of proposed law.

Effective for election purposes only for the regular congressional elections in 2012; effective for all purposes on January 3, 2013.

(Adds R.S. 18:1276.1; Repeals R.S. 18:1276)

Plan Statistics

<u>Districts:</u>	<u># of Members</u>	<u>Actual Population</u>	<u>Ideal Population</u>	<u>Absolute Deviation</u>	<u>Relative Deviation</u>
District 1	1	755,566	755,562	4	0.001%
District 2	1	755,552	755,562	-10	-0.001%
District 3	1	755,611	755,562	49	0.006%
District 4	1	755,591	755,562	29	0.004%
District 5	1	755,519	755,562	-43	-0.006%
District 6	1	755,533	755,562	-29	-0.004%
Grand Total:	6	4,533,372	4,533,372		

Ideal Population Per Member:	755562		
Number of Districts for Plan Type:	6		
Range of District Populations:	755,519	to	755,611
Absolute Mean Deviation:	15		
Absolute Range:	-43	to	49
Absolute Overall Range:	92		
Relative Mean Deviation:	0.00%		
Relative Range:	-0.01%	to	0.01%
Relative Overall Range:	0.02%		

<i>Ideal - Actual:</i>	0
<i>Remainder:</i>	0
<i>Unassigned Population:</i>	0

Total Population

	Total Population	Total White	Total Black	Total Asian	Total American Indian	Total Other	Total Hispanic	Reg Total Jan 2011
District 1	755,566	598,038	101,943	17,714	15,859	22,012	56,676	448,481
	100.000%	79.151%	13.492%	2.344%	2.099%	2.913%	7.501%	77.628%
District 2	755,552	236,709	475,049	20,684	4,069	19,041	43,524	449,472
	100.000%	31.329%	62.874%	2.738%	0.539%	2.520%	5.761%	78.677%
District 3	755,611	529,858	197,011	11,529	6,005	11,208	23,147	459,926
	100.000%	70.123%	26.073%	1.526%	0.795%	1.483%	3.063%	81.706%
District 4	755,591	473,705	250,315	9,570	10,898	11,103	24,728	429,787
	100.000%	62.693%	33.128%	1.267%	1.442%	1.469%	3.273%	76.076%
District 5	755,519	454,651	284,921	5,234	5,043	5,670	13,671	460,573
	100.000%	60.177%	37.712%	0.693%	0.667%	0.750%	1.809%	80.797%
District 6	755,533	543,231	177,646	16,820	4,679	13,157	30,814	432,136
	100.000%	71.900%	23.513%	2.226%	0.619%	1.741%	4.078%	76.019%
Grand Total	4,533,372	2,836,192	1,486,885	81,551	46,553	82,191	192,560	2,680,375
	100.000%	62.563%	32.799%	1.799%	1.027%	1.813%	4.248%	78.480%

Voter Registration

	Reg Total Jan 2011	Reg White Jan 2011	Reg Black Jan 2011	Reg Other Jan 2011	Reg Dem Total Jan 2011	Reg Rep Total Jan 2011	Reg Other Total Jan 2011
District 1	448,481	373,188	45,777	29,516	169,512	165,082	113,887
	77.628%	83.212%	10.207%	6.581%	37.797%	36.809%	25.394%
District 2	449,472	144,669	276,659	28,144	302,054	51,065	96,353
	78.677%	32.186%	61.552%	6.262%	67.202%	11.361%	21.437%
District 3	459,926	336,306	109,241	14,379	233,438	119,567	106,921
	81.706%	73.122%	23.752%	3.126%	50.756%	25.997%	23.247%
District 4	429,787	282,736	131,436	15,615	216,876	119,275	93,636
	76.076%	65.785%	30.582%	3.633%	50.461%	27.752%	21.787%
District 5	460,573	291,988	158,075	10,510	251,047	116,633	92,893
	80.797%	63.397%	34.321%	2.282%	54.508%	25.323%	20.169%
District 6	432,136	332,230	82,889	17,017	182,059	146,568	103,509
	76.019%	76.881%	19.181%	3.938%	42.130%	33.917%	23.953%
Grand Total	2,680,375	1,761,117	804,077	115,181	1,354,986	718,190	607,199

Splits

	Total Population	Total White	Total Black	Total Asian	Total American Indian	Total Other	VAP Total	VAP White	VAP Black	VAP Asian	VAP American Indian	VAP Other	Reg Total Jan 2011	Reg White Jan 2011	Reg Black Jan 2011	Reg Other Jan 2011
District 1																
*Jefferson	232,558	185,952	24,579	8,982	1,695	11,350	186,310	152,063	17,452	6,880	1,286	8,629	138,660	117,589	8,804	12,267
Lafourche	96,318	76,445	13,363	855	3,457	2,198	72,652	59,362	8,945	612	2,187	1,546	53,711	45,827	6,316	1,568
*Orleans	37,980	33,286	2,841	1,109	195	549	31,278	27,614	2,207	883	147	427	25,269	21,775	1,496	1,998
Plaquemines	23,042	16,246	4,951	844	556	445	16,713	12,086	3,367	583	396	281	14,534	10,541	3,075	918
St. Bernard	35,897	26,579	6,705	873	522	1,218	26,720	20,490	4,338	640	370	882	23,358	19,332	2,829	1,197
*St. Tammany	217,911	180,939	27,432	3,718	2,059	3,763	161,319	136,656	18,056	2,506	1,488	2,613	133,650	112,787	12,989	7,874
Terrebonne	111,860	78,591	22,072	1,333	7,375	2,489	82,737	60,621	14,647	986	4,725	1,758	59,299	45,337	10,268	3,694
District 1	755,566	598,038	101,943	17,714	15,859	22,012	577,729	468,892	69,012	13,090	10,599	16,136	448,481	373,188	45,777	29,516
	100.000%	79.151%	13.492%	2.344%	2.099%	2.913%	100.000%	81.161%	11.945%	2.266%	1.835%	2.793%	77.628%	83.212%	10.207%	6.581%
District 2																
*Ascension	20,113	6,410	13,119	108	73	403	14,577	5,174	9,004	85	56	258	12,293	4,169	7,813	311
*Assumption	7,178	3,185	3,888	11	28	66	5,328	2,509	2,739	7	17	56	4,590	2,128	2,446	16
*East Baton Rouge	109,550	8,465	99,709	457	253	666	79,680	7,714	70,887	371	203	505	63,783	5,169	56,663	1,951
*Iberville	20,429	7,226	12,963	67	47	126	15,787	6,018	9,589	49	39	92	11,494	3,912	7,411	171
*Jefferson	199,994	86,163	92,420	9,661	1,707	10,043	148,845	69,210	63,850	7,230	1,203	7,352	113,417	51,538	51,329	10,550
*Orleans	305,849	80,142	207,606	9,842	1,501	6,758	239,336	72,066	152,487	7,957	1,252	5,574	186,503	48,661	124,152	13,690
*St. Charles	26,648	18,295	7,600	218	212	323	19,549	13,800	5,254	134	141	220	16,274	11,638	4,101	535
St. James	22,102	10,615	11,290	43	52	102	16,401	8,231	8,039	26	41	64	14,703	7,249	7,260	194
*St. John the Baptist	35,471	12,476	22,101	225	166	503	25,711	9,910	15,195	146	114	346	21,157	7,746	12,721	690
*West Baton Rouge	8,218	3,732	4,353	52	30	51	6,072	2,925	3,046	46	23	32	5,258	2,459	2,763	36
District 2	755,552	236,709	475,049	20,684	4,069	19,041	571,286	197,557	340,090	16,051	3,089	14,499	449,472	144,669	276,659	28,144
	100.000%	31.329%	62.874%	2.738%	0.539%	2.520%	100.000%	34.581%	59.531%	2.810%	0.541%	2.538%	78.677%	32.186%	61.552%	6.262%
District 3																
*Acadia	42,761	33,195	8,934	146	211	275	31,193	24,871	5,894	100	142	186	25,985	20,715	4,969	301
*Assumption	16,243	12,450	3,362	57	162	212	12,337	9,687	2,360	44	108	138	10,198	7,965	2,140	93
Calcasieu	192,768	136,514	49,825	2,550	1,626	2,253	143,756	105,077	34,139	1,846	1,187	1,507	117,844	86,021	27,975	3,848
Cameron	6,839	6,546	135	10	60	88	5,183	5,011	74	9	38	51	5,536	5,272	188	76
Iberia	73,240	45,551	24,091	1,926	428	1,244	53,398	35,137	15,754	1,308	307	892	45,139	30,016	13,917	1,206
*Iberville	12,958	9,054	3,657	57	70	120	10,098	7,236	2,669	36	59	98	8,958	6,502	2,343	113
*Jefferson Davis	24,415	19,201	4,754	82	163	215	17,965	14,496	3,160	59	102	148	14,695	11,894	2,513	288
Lafayette	221,578	153,706	58,912	3,891	1,290	3,779	167,315	120,566	40,203	2,884	951	2,711	131,124	95,632	30,155	5,337
St. Martin	52,160	34,313	16,397	478	350	622	38,389	26,320	11,090	316	227	436	33,849	22,866	9,886	1,097
St. Mary	54,650	32,406	18,290	1,058	1,269	1,627	40,746	25,191	12,797	773	837	1,148	31,845	20,072	10,527	1,246
Vermilion	57,999	46,922	8,654	1,274	376	773	42,522	35,424	5,457	902	259	480	34,753	29,351	4,628	774

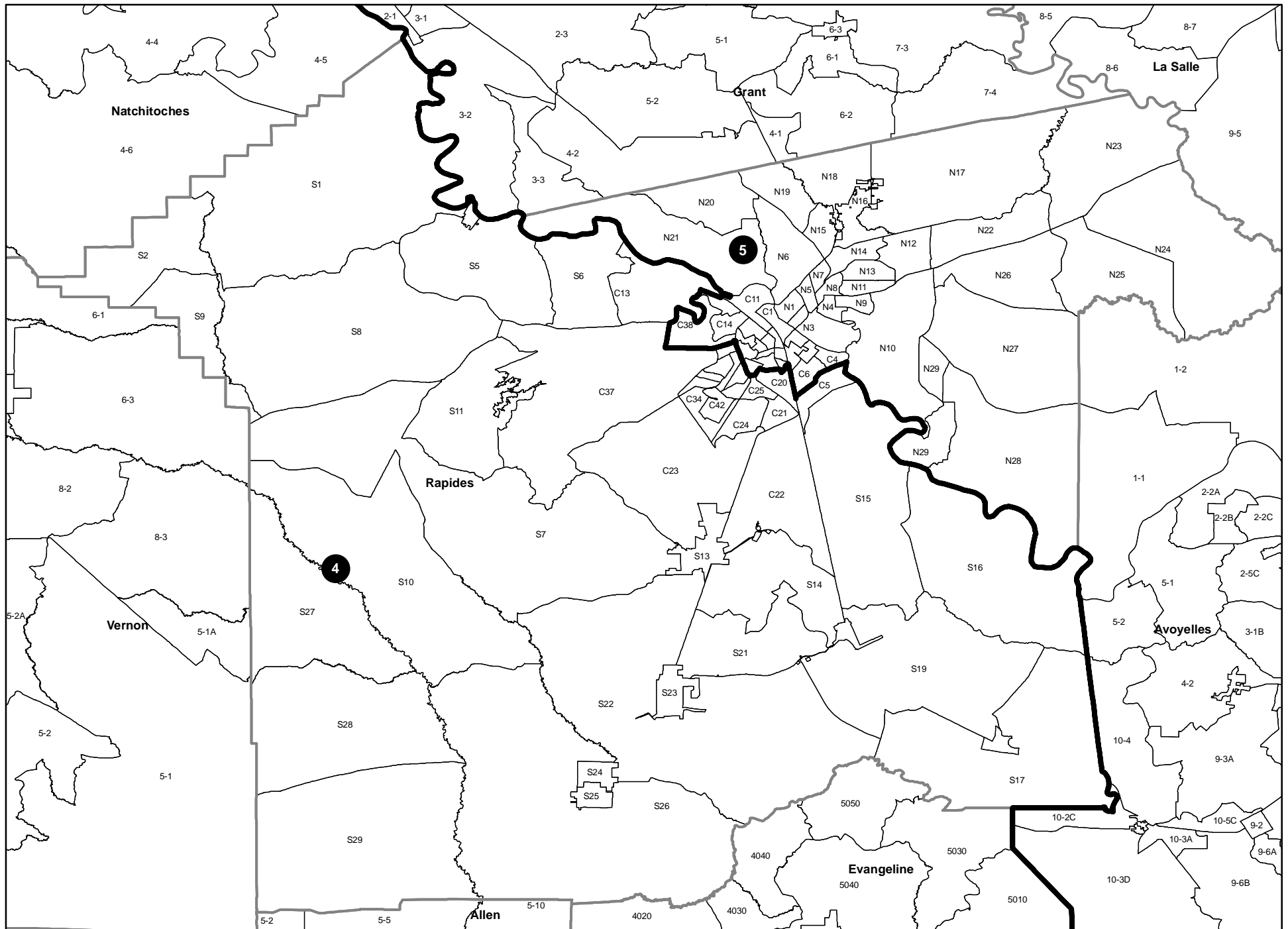
Splits

	Total Population	Total White	Total Black	Total Asian	Total American Indian	Total Other	VAP Total	VAP White	VAP Black	VAP Asian	VAP American Indian	VAP Other	Reg Total Jan 2011	Reg White Jan 2011	Reg Black Jan 2011	Reg Other Jan 2011
District 3	755,611	529,858	197,011	11,529	6,005	11,208	562,902	409,016	133,597	8,277	4,217	7,795	459,926	336,306	109,241	14,379
	100.000%	70.123%	26.073%	1.526%	0.795%	1.483%	100.000%	72.662%	23.734%	1.470%	0.749%	1.385%	81.706%	73.122%	23.752%	3.126%
District 4																
*Acadia	19,012	15,932	2,711	50	102	217	13,717	11,683	1,774	31	71	158	11,271	9,631	1,472	168
Allen	25,764	18,435	6,192	220	749	168	19,870	14,288	4,828	154	495	105	13,110	10,190	2,397	523
Beauregard	35,654	29,321	5,016	353	652	312	26,359	21,902	3,569	239	460	189	19,924	16,703	2,304	917
Bossier	116,979	84,430	25,606	2,516	1,139	3,288	86,945	64,692	17,413	1,836	837	2,167	60,834	46,663	11,491	2,680
Caddo	254,969	124,942	122,229	3,230	1,906	2,662	192,315	100,748	85,902	2,363	1,455	1,847	151,374	79,163	66,708	5,503
De Soto	26,656	15,456	10,600	54	331	215	20,006	12,055	7,495	42	273	141	16,396	9,663	6,191	542
Evangeline	33,984	23,439	9,862	139	161	383	24,817	17,619	6,661	97	117	323	21,407	15,267	5,973	167
*Jefferson Davis	7,179	5,924	1,082	16	112	45	5,231	4,375	731	7	78	40	4,642	3,914	619	109
Natchitoches	39,566	21,494	16,778	197	649	448	29,966	17,226	11,771	151	477	341	22,982	13,181	8,878	923
*Rapides	55,496	36,886	15,718	1,017	849	1,026	41,382	28,633	10,677	742	649	681	33,779	24,213	8,311	1,255
Red River	9,091	5,360	3,633	16	43	39	6,778	4,256	2,450	12	34	26	5,981	3,566	2,377	38
Sabine	24,233	17,155	4,234	84	2,636	124	18,311	13,544	2,835	63	1,796	73	13,837	10,811	2,032	994
*St. Landry	13,467	8,848	4,297	72	76	174	9,929	6,768	2,924	56	50	131	8,717	5,775	2,772	170
Vernon	52,334	39,614	8,313	1,426	1,177	1,804	37,822	29,416	5,349	1,026	848	1,183	21,620	17,881	2,495	1,244
Webster	41,207	26,469	14,044	180	316	198	31,497	20,907	10,110	120	241	119	23,913	16,115	7,416	382
District 4	755,591	473,705	250,315	9,570	10,898	11,103	564,945	368,112	174,489	6,939	7,881	7,524	429,787	282,736	131,436	15,615
	100.000%	62.693%	33.128%	1.267%	1.442%	1.469%	100.000%	65.159%	30.886%	1.228%	1.395%	1.332%	76.076%	65.785%	30.582%	3.633%
District 5																
Avoyelles	42,073	28,188	12,876	174	641	194	31,790	21,850	9,247	126	431	136	23,105	16,874	5,790	441
Bienville	14,353	7,935	6,153	44	132	89	11,012	6,279	4,544	31	105	53	9,256	5,112	4,085	59
Caldwell	10,132	8,213	1,778	30	64	47	7,758	6,314	1,336	23	51	34	6,324	5,351	911	62
Catahoula	10,407	6,985	3,318	9	53	42	8,057	5,543	2,438	8	43	25	6,380	4,749	1,596	35
Claiborne	17,195	8,167	8,820	62	99	47	13,815	6,781	6,889	37	80	28	8,877	4,908	3,872	97
Concordia	20,822	11,959	8,604	59	123	77	15,589	9,298	6,117	41	88	45	12,696	7,997	4,529	170
East Carroll	7,759	2,245	5,398	47	31	38	5,766	1,845	3,830	37	25	29	5,330	1,617	3,664	49
East Feliciana	20,267	10,783	9,250	67	127	40	16,075	8,775	7,123	58	94	25	13,411	7,629	5,126	656
Franklin	20,767	13,930	6,620	65	82	70	15,450	10,838	4,471	42	63	36	13,466	9,408	3,978	80
Grant	22,309	18,149	3,602	97	385	76	17,158	13,788	2,978	67	274	51	11,900	10,361	1,284	255
Jackson	16,274	11,084	4,947	67	83	93	12,570	8,681	3,724	39	65	61	9,846	6,879	2,805	162
La Salle	14,890	12,689	1,808	40	215	138	11,366	9,677	1,402	35	143	109	8,427	7,648	621	158
Lincoln	46,735	25,775	19,184	874	230	672	37,130	20,875	14,821	749	183	502	24,016	14,604	8,519	893
Madison	12,093	4,498	7,452	33	55	55	9,071	3,644	5,312	20	45	50	7,634	2,780	4,764	90
Morehouse	27,979	14,345	13,281	142	102	109	21,061	11,583	9,230	102	79	67	18,681	10,048	8,329	304

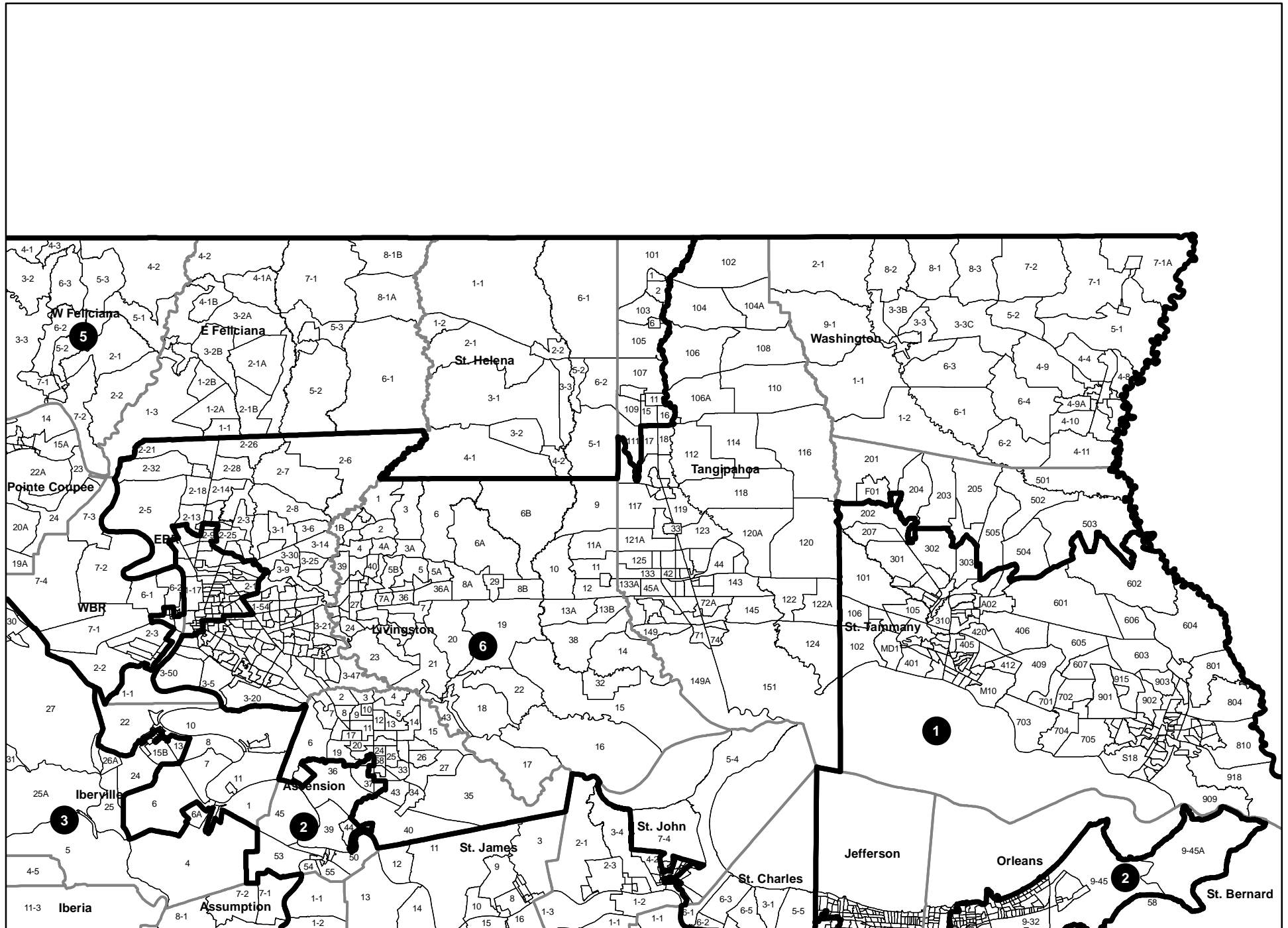
Splits

	Total Population	Total White	Total Black	Total Asian	Total American Indian	Total Other	VAP Total	VAP White	VAP Black	VAP Asian	VAP American Indian	VAP Other	Reg Total Jan 2011	Reg White Jan 2011	Reg Black Jan 2011	Reg Other Jan 2011
District 5																
Ouachita	153,720	92,884	57,194	1,722	705	1,215	113,347	72,316	38,405	1,248	549	829	94,408	59,945	30,997	3,466
Pointe Coupee	22,802	14,010	8,427	69	71	225	17,327	11,073	6,020	44	57	133	15,464	9,584	5,696	184
*Rapides	76,117	46,487	27,432	895	833	470	56,217	35,946	18,691	635	621	324	44,277	29,115	13,796	1,366
Richland	20,725	12,879	7,544	92	96	114	15,440	9,999	5,237	65	70	69	12,939	8,173	4,646	120
St. Helena	11,203	5,034	6,014	16	72	67	8,440	4,036	4,291	11	60	42	8,432	3,816	4,517	99
*St. Landry	69,917	37,767	30,856	323	330	641	50,775	28,825	21,073	210	228	439	47,832	26,126	20,819	887
*Tangipahoa	10,895	4,377	6,387	54	41	36	8,091	3,588	4,414	35	30	24	6,384	2,934	3,317	133
Tensas	5,252	2,202	2,991	13	15	31	3,923	1,796	2,085	11	9	22	4,131	1,807	2,304	20
Union	22,721	15,682	6,242	49	115	633	17,493	12,568	4,439	31	91	364	14,964	10,863	3,709	392
*West Baton Rouge	15,570	10,539	4,779	62	55	135	11,789	8,142	3,471	46	44	86	9,538	6,785	2,645	108
West Carroll	11,604	9,497	1,870	34	86	117	8,746	7,254	1,330	24	62	76	7,167	6,017	1,096	54
West Feliciana	15,625	8,125	7,317	42	35	106	12,907	6,412	6,364	24	33	74	6,796	4,448	2,254	94
Winn	15,313	10,223	4,777	53	167	93	11,871	8,018	3,619	44	129	61	8,892	6,410	2,406	76
District 5	755,519	454,651	284,921	5,234	5,043	5,670	570,034	355,744	202,901	3,843	3,752	3,794	460,573	291,988	158,075	10,510
	100.000%	60.177%	37.712%	0.693%	0.667%	0.750%	100.000%	62.408%	35.595%	0.674%	0.658%	0.666%	80.797%	63.397%	34.321%	2.282%
District 6																
*Ascension	87,102	72,162	11,347	1,126	513	1,954	61,883	52,163	7,407	731	356	1,226	51,811	44,063	5,443	2,305
*East Baton Rouge	330,621	206,462	102,825	13,107	1,660	6,567	256,826	170,161	70,409	10,100	1,283	4,873	188,834	132,982	47,147	8,705
Livingston	128,026	117,601	6,941	906	1,055	1,523	92,696	85,855	4,535	565	782	959	71,580	66,508	2,985	2,087
*St. Charles	26,132	18,245	6,795	357	159	576	19,023	13,645	4,614	223	122	419	15,431	11,275	3,353	803
*St. John the Baptist	10,453	7,025	2,843	189	71	325	7,857	5,498	1,932	144	50	233	6,628	4,720	1,544	364
*St. Tammany	15,829	14,425	1,017	89	123	175	12,285	11,308	696	64	91	126	9,964	9,064	506	394
*Tangipahoa	110,202	75,829	30,994	901	793	1,685	82,586	59,543	20,645	675	601	1,122	62,280	45,645	14,672	1,963
Washington	47,168	31,482	14,884	145	305	352	35,305	24,363	10,374	101	238	229	25,608	17,973	7,239	396
District 6	755,533	543,231	177,646	16,820	4,679	13,157	568,461	422,536	120,612	12,603	3,523	9,187	432,136	332,230	82,889	17,017
	100.000%	71.900%	23.513%	2.226%	0.619%	1.741%	100.000%	74.330%	21.217%	2.217%	0.620%	1.616%	76.019%	76.881%	19.181%	3.938%

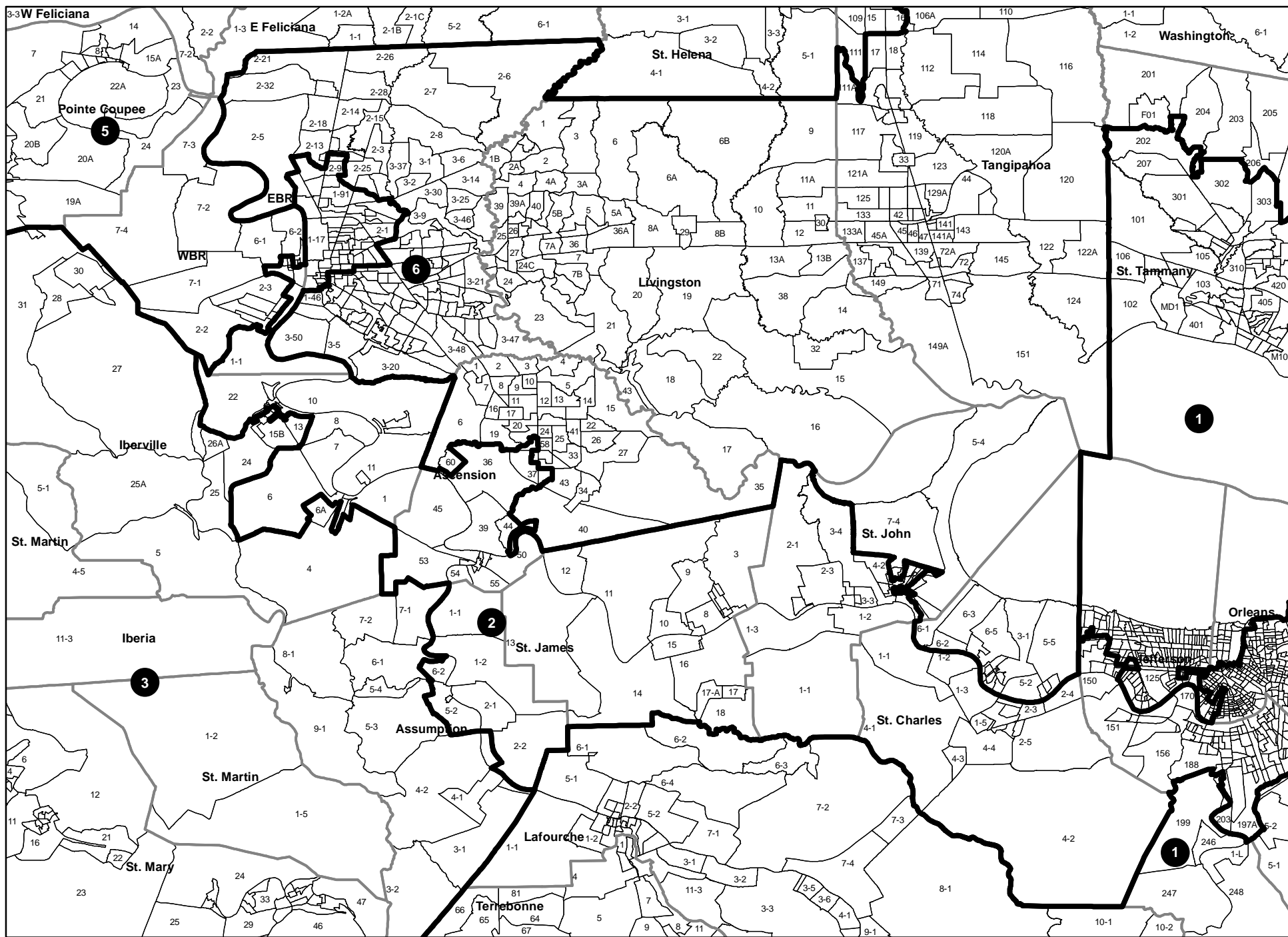
Proposed Congressional Plan --- Rapides



Proposed Congressional Plan --- Florida Parishes



Proposed Congressional Plan --- River Parishes



Proposed Congressional Plan --- Orleans/Jefferson Area

