

SENATE BILL NO. 1

BY SENATOR CHAISSON

1 AN ACT

2 To enact R.S. 24:35 and to repeal R.S. 24:35.1, relative to legislative redistricting; to provide  
3 for the redistricting of the Senate of the Legislature of Louisiana; to provide for  
4 effective dates; and to provide for related matters.

5 Be it enacted by the Legislature of Louisiana:

6 Section 1. R.S. 24:35 is hereby enacted to read as follows:

7 **§35. Membership of the Senate**

8 **A. The Senate of the Legislature of Louisiana shall be composed of**  
9 **thirty-nine members. The state shall be divided into the following senatorial**  
10 **districts and one senator shall be chosen from each of the districts:**

11 **(1) District 1 is composed of Precincts 9-45 and 9-45A of Orleans Parish;**  
12 **Precincts 1-1, 1-2, 1-3 and 1-4 of Plaquemines Parish; Precincts 22, 24, 25, 33,**  
13 **34, 41, 43, 45, 46, 52, 53, 54, 55, 56, 57 and 58 of St. Bernard Parish and**  
14 **Precincts 601, 602, 603, 604, 606, 705, 706, 801, 802, 803, 804, 805, 806, 807, 808,**  
15 **809, 810, 811, 812, 813, 814, 815, 816, 817, 901, 902, 903, 904, 905, 906, 907, 908,**  
16 **909, 910, 911, 912, 913, 914, 915, 916, 917, 918, 921, P01, S01, S02, S03, S04, S05,**  
17 **S06, S07, S08, S09, S10, S11, S12, S13, S15, S16, S17, S18, S19, S21, S22, S23,**  
18 **S24 and S25 of St. Tammany Parish.**

19 **(2) District 2 is composed of Precincts 30, 36, 37, 39, 44, 45, 47, 48, 49,**  
20 **50, 51, 52, 53, 54, 55, 56, 57 and 60 of Ascension Parish; Precincts 1-1, 1-2, 2-1,**  
21 **2-2, 4-1, 4-2, 5-1, 5-2, 6-1, 6-2 and 7-1 of Assumption Parish; Precincts 1, 7, 8,**  
22 **10, 11, 12, 13, 13B, 13C, 14A, and 22 (Part) that portion east of State Highway**  
23 **1 of Iberville Parish; Precincts 1-2, 1-3, 1-4, 2-1, 2-1A, 2-3, 2-3A, 2-4, 2-4A, 2-5,**  
24 **2-7, 2-9, 2-10, 5-1, 5-1A and 5-1B of Lafourche Parish; Precincts 1-1 of St.**  
25 **Charles Parish; Precincts 2, 3, 4, 5, 6, 7, 7-A, 12, 13, 14, 15, 15B, 16, 17, 17-A and**

1 18 of St. James Parish; Precincts 1-2, 1-3, 1-4, 1-5, 2-1, 2-2, 2-3, 2-4, 3-1, 3-2, 3-3,  
 2 3-4, 4-1, 4-3 and 4-9 of St. John the Baptist Parish and Precincts 1-1, 2-1A, 3-1A,  
 3 3-1B, 3-2, 4-2, 4-3A, 4-3B, 4-4, 4-5 and 5-1 of West Baton Rouge Parish.

4 (3) District 3 is composed of Precincts 171, 172, 173, 174, 175, 179A,  
 5 179B, 180, 181, 182, 187, 188, 189, 200, 201, 210, 211, 212A (Part) that portion  
 6 east of State Highway 3017 and north of Lapalco Blvd., 1-G and 2-G of  
 7 Jefferson Parish; Precincts 6-1, 7-25A, 7-35, 7-37, 7-40, 8-1, 8-19, 8-20, 8-21,  
 8 8-22, 8-23, 8-24, 8-25, 8-26, 8-27, 9-1, 9-3, 9-3A, 9-4, 9-5, 9-5A, 9-6B, 9-6C, 9-6D,  
 9 9-6E, 9-6F, 9-7, 9-8, 9-8A, 9-9, 9-10, 9-11, 9-12, 9-13, 9-14, 9-15, 9-16, 9-25, 9-26,  
 10 9-28, 9-28C, 9-28E, 9-29, 9-30, 9-30A, 9-31, 9-31A, 9-31B, 9-32, 9-39, 9-39B, 9-40,  
 11 9-40A, 9-40C, 9-41, 9-41A, 9-41B, 9-41C, 9-41D, 9-43M, 9-44, 9-44I, 9-44L,  
 12 9-44M, 9-44N, 9-44P, 9-44Q, 15-1 and 15-5 of Orleans Parish and Precincts 10,  
 13 11, 12, 13, 14, 15, 16, 20, 21, 23, 30, 31, 32, 40, 42, 44, 50 and 51 of St. Bernard  
 14 Parish.

15 (4) District 4 is composed of Precincts 3-14, 3-19, 3-20, 4-2, 4-5, 4-6, 4-7,  
 16 4-8, 4-9, 4-11, 4-14, 4-15, 4-17, 4-17A, 4-18, 4-20, 4-21, 4-22, 4-23, 5-1, 5-2, 5-3,  
 17 5-4, 5-8, 5-9, 5-10, 5-11, 5-12, 5-13, 5-15, 5-16, 5-17, 5-18, 6-2, 6-4, 6-7, 6-8, 6-9,  
 18 7-1, 7-2, 7-4, 7-5, 7-7, 7-8, 7-9A, 7-12, 7-15, 7-16, 7-17, 7-18, 7-19, 7-23, 7-24,  
 19 7-25, 7-26, 7-27, 7-27B, 7-28, 7-28A, 7-29, 7-30, 7-32, 7-33, 7-34, 7-37A, 7-41,  
 20 7-42, 8-2, 8-4, 8-6, 8-7, 8-8, 8-9, 8-12, 8-13, 8-14, 8-15, 8-28, 8-30, 9-17, 9-19, 9-21,  
 21 9-23, 9-31D, 9-33, 9-34A, 9-35, 9-35A, 9-36, 9-36B, 9-37, 9-38, 9-38A, 9-42,  
 22 9-42C, 9-43A, 9-43B, 9-43C, 9-43E, 9-43F, 9-43G, 9-43H, 9-43I, 9-43J, 9-43K,  
 23 9-43L, 9-43N, 9-44A, 9-44B, 9-44D, 9-44E, 9-44F, 9-44G, 9-44J, 9-44O, 17-17,  
 24 17-18, 17-18A, 17-19 and 17-20 of Orleans Parish.

25 (5) District 5 is composed of Precincts 107, 131 and 133 of Jefferson  
 26 Parish and Precincts 1-1, 1-2, 1-5, 1-6, 2-1, 2-2, 2-3, 2-4, 2-6, 2-6A, 2-7, 3-1, 3-3,  
 27 3-5, 3-8, 3-9, 3-12, 3-15, 3-18, 4-3, 4-4, 5-5, 5-7, 6-6, 7-6, 7-10, 7-11, 7-13, 7-14,  
 28 7-20, 7-21, 10-3, 10-6, 10-7, 10-8, 10-9, 10-11, 10-12, 10-13, 10-14, 11-2, 11-3,  
 29 11-4, 11-5, 11-8, 11-9, 11-10, 11-11, 11-12, 11-13, 11-14, 11-17, 12-1, 12-2, 12-3,  
 30 12-4, 12-5, 12-6, 12-7, 12-8, 12-9, 12-10, 12-11, 12-12, 12-13, 12-14, 12-16, 12-17,

1 12-19, 13-1, 13-2, 13-3, 13-4, 13-5, 13-6, 13-7, 13-8, 13-9, 13-10, 13-11, 13-12,  
 2 13-13, 13-14, 13-15, 13-16, 14-12, 14-13A, 14-17, 14-18A, 14-19, 14-20, 14-21,  
 3 14-23, 14-24A, 14-25, 14-26, 16-2, 16-3, 16-4, 16-5, 16-6, 16-7, 16-8, 16-9, 17-2,  
 4 17-3, 17-4, 17-5, 17-6, 17-7, 17-8, 17-9, 17-10, 17-11, 17-12, 17-13, 17-13A, 17-14,  
 5 17-15 and 17-16 of Orleans Parish.

6 (6) District 6 is composed of Precincts 1-98, 2-6, 2-8, 3-1, 3-2, 3-3, 3-9,  
 7 3-12, 3-15, 3-16, 3-21, 3-22, 3-25, 3-26, 3-28, 3-30, 3-32, 3-33, 3-34, 3-37, 3-38,  
 8 3-43, 3-45, 3-46, 3-47 and 3-53 of East Baton Rouge Parish; Precinct 9 of  
 9 Livingston Parish; Precincts 4-1, 4-2 and 5-1 of St. Helena Parish and Precincts  
 10 40, 40A, 42, 42A, 45, 45A, 46, 47, 48, 49, 70, 70A, 71, 72, 72A, 73, 74, 117, 121,  
 11 121A, 125, 127, 127A, 133, 133A, 137B, 139, 141, 149A and 151 of Tangipahoa  
 12 Parish.

13 (7) District 7 is composed of Precincts 195, 196, 197A, 197B, 197C, 205,  
 14 213A, 213B, 213C, 214A, 214B, 225, 226, 232A, 232B, 3-G, 4-G, 5-G, 6-G, 7-G,  
 15 8-G, 9-G, 10-G and 11-G of Jefferson Parish; Precincts 15-2, 15-3, 15-6, 15-8,  
 16 15-9, 15-10, 15-11, 15-12, 15-12A, 15-13, 15-13A, 15-13B, 15-14, 15-14A, 15-14B,  
 17 15-14C, 15-14D, 15-14E, 15-14F, 15-14G, 15-15, 15-15A, 15-15B, 15-16, 15-17,  
 18 15-17A, 15-17B, 15-18, 15-18A, 15-18B, 15-18C, 15-18D, 15-18E, 15-18F, 15-19,  
 19 15-19A, 15-19B and 15-19C of Orleans Parish and Precincts 2-1, 3-1, 4-1 and 5-2  
 20 of Plaquemines Parish.

21 (8) District 8 is composed of Precincts 150, 151, 152, 153, 154, 155, 156,  
 22 157A, 157B, 170, 176, 177, 178, 183, 184, 185A, 185B, 190, 191, 192, 193, 194A,  
 23 194B, 198, 199, 202, 203, 204, 212A (Part) that portion west of State Highway  
 24 3017 and north of Lapalco Blvd., and that portion south of Lapalco Blvd., 212B,  
 25 215, 216A, 216B, 217, 227, 228, 229, 230, 231, 234, 235, 236, 237, 238, 246, 247,  
 26 248, 12-G, 13-G, 1-GI, 1-L, 1-W, 2-W, 3-W, 4-W, 5-W, 6-W and 7-W of  
 27 Jefferson Parish and Precincts 5-1, 6-1, 6-2, 6-3, 6-4, 7-1, 7-3, 8-1, 9-1 and 9-3 of  
 28 Plaquemines Parish.

29 (9) District 9 is composed of Precincts 12, 13, 14, 15, 16, 17, 18, 19, 20,  
 30 22, 23, 24, 25, 26, 27, 28, 29, 30, 31, 32, 33, 34, 35, 36, 37, 38, 39, 40, 41, 42, 43, 44,

1 45, 46, 60, 66, 69, 70, 71, 72, 73, 74, 75, 76, 77, 78, 79, 80, 81, 82, 83, 84, 85, 86, 87,  
 2 88, 89, 90, 91, 92, 93, 94, 95, 96, 97, 98, 99, 100, 101, 102, 103, 106, 127, 128, 129,  
 3 130, 132, 134, 136 and 138 of Jefferson Parish and Precincts 14-1, 14-2, 14-3,  
 4 14-4, 14-5, 14-6, 14-7, 14-8, 14-9, 14-10, 14-11, 14-14, 14-15, 14-16, 16-1, 16-1A  
 5 and 17-1 of Orleans Parish.

6 (10) District 10 is composed of Precincts 1, 2, 3, 4, 5, 7, 8, 9, 10, 11, 21,  
 7 51, 52, 53, 54, 55, 56, 57, 58, 59, 61, 62, 63, 64, 65, 67, 68, 105, 116, 117, 118, 119,  
 8 120, 121, 122, 123, 124, 125, 126, 1-H, 2-H, 3-H, 4-H, 5-H, 6-H, 7-H, 8-H, 9-H,  
 9 1-K, 2-K, 3-K, 4-K, 5-K, 6-K, 7-K, 8-K, 9-K, 10-K, 11-K, 12-K, 13-KA, 14-K,  
 10 15-K, 16-K, 17-K, 18-K, 19-K, 20-K, 25-K, 26-K (Part) that portion northeast  
 11 of Illinois Central Railroad, 27-K, 28-K, 34-K and 35-K of Jefferson Parish.

12 (11) District 11 is composed of Precincts 101, 102, 103, 104, 105, 106,  
 13 107, 304, 305, 306, 307, 308, 309, 310, 311, 312, 313, 401, 402, 403, 404, 405, 406,  
 14 407, 408, 409, 410, 411, 412, 413, 414, 415, 416, 417, 418, 419, 420, 421, 422, 423,  
 15 424, 426, 427, 605, 607, 701, 702, 703, 704, A01, A02, A03, A04, C01, C02, C03,  
 16 C04, C05, C06, C07, C08, C09, C10, C11, M01, M02, M03, M04, M05, M06,  
 17 M07, M08, M09, M10 and MD1 of St. Tammany Parish and Precincts 120,  
 18 120B, 122, 122A, 124, 141A, 143 and 145 of Tangipahoa Parish.

19 (12) District 12 is composed of Precincts 201, 202, 203, 204, 205, 206,  
 20 207, 301, 302, 303, 501, 502, 503, 504, 505 and F01 of St. Tammany Parish;  
 21 Precincts 1, 2, 6, 11, 15, 16, 17, 18, 26, 27, 27A, 28, 28A, 33, 41, 43, 44, 101, 102,  
 22 103, 104, 104A, 105, 106, 106A, 106B, 107, 108, 109, 109A, 110, 111, 111A, 112,  
 23 114, 115B, 116, 118, 119, 120A, 121B, 123, 129 and 129A of Tangipahoa Parish  
 24 and Washington Parish.

25 (13) District 13 is composed of Precincts 3-6 and 3-14 of East Baton  
 26 Rouge Parish; Precincts 1, 1A, 1B, 1C, 1D, 2, 2A, 3, 3A, 4, 4A, 5, 5A, 5B, 6, 6A,  
 27 6B, 7, 7A, 8A, 8B, 10, 11, 11A, 12, 13A, 13B, 19, 20, 23, 23A, 23B, 24, 24A, 24B,  
 28 24C, 24D, 25, 26, 26A, 26B, 26C, 27, 28A, 28B, 29, 30, 35, 35A, 36, 36A, 39, 39A,  
 29 40, 40A and 41 of Livingston Parish and Precincts 137, 137A, 137C, 137D and  
 30 149 of Tangipahoa Parish.

1                   **(14) District 14 is composed of Precincts 1-1, 1-3, 1-4, 1-5, 1-6, 1-10, 1-13,**  
 2                   **1-14, 1-15, 1-16, 1-17, 1-18, 1-19, 1-21, 1-22, 1-23, 1-24, 1-25, 1-26, 1-27, 1-28,**  
 3                   **1-29, 1-30, 1-31, 1-32, 1-36, 1-37, 1-38, 1-39, 1-45, 1-46, 1-50, 1-51, 1-57, 1-58,**  
 4                   **1-59, 1-61, 1-62, 1-63, 1-64, 1-65, 1-67, 1-68, 1-73, 1-85, 1-100, 1-102, 1-107, 3-5,**  
 5                   **3-20, 3-23, 3-44, 3-50 and 3-55 of East Baton Rouge Parish.**

6                   **(15) District 15 is composed of Precincts 1-2, 1-54, 1-55, 1-60, 1-70, 1-71,**  
 7                   **1-77, 1-78, 1-81, 1-82, 1-83, 1-84, 1-86, 1-87, 1-88, 1-91, 1-92, 1-93, 1-94, 1-95,**  
 8                   **1-97, 1-101, 1-104, 2-1, 2-2, 2-3, 2-4, 2-5, 2-9, 2-10, 2-11, 2-12, 2-13, 2-14, 2-15,**  
 9                   **2-16, 2-17, 2-18, 2-19, 2-20, 2-22, 2-23, 2-24, 2-25, 2-27, 2-28, 2-30, 2-31, 3-8, 3-24,**  
 10                  **3-42 and 3-54 of East Baton Rouge Parish.**

11                  **(16) District 16 is composed of Precincts 1-7, 1-8, 1-9, 1-12, 1-33, 1-34,**  
 12                  **1-35, 1-40, 1-41, 1-42, 1-43, 1-44, 1-47, 1-48, 1-49, 1-52, 1-53, 1-56, 1-66, 1-69,**  
 13                  **1-72, 1-74, 1-75, 1-80, 1-89, 1-90, 1-99, 1-103, 1-105, 3-4, 3-7, 3-10, 3-11, 3-13,**  
 14                  **3-17, 3-18, 3-19, 3-27, 3-29, 3-31, 3-35, 3-36, 3-39, 3-40, 3-41, 3-48, 3-49, 3-51 and**  
 15                  **3-52 of East Baton Rouge Parish.**

16                  **(17) District 17 is composed of Precincts 2-3, 3-1, 3-2, 5-3, 5-4, 7-2, 8-1**  
 17                  **and 9-1 of Assumption Parish; Precincts 2-7, 2-21, 2-26, 2-29 and 2-32 of East**  
 18                  **Baton Rouge Parish; East Feliciana Parish; Precincts 2, 3, 4, 5, 6, 6A, 13A, 14,**  
 19                  **14B, 15, 15A, 15B, 16, 17, 17A, 18, 19, 19A, 20, 21, 22 (Part) that portion west**  
 20                  **of State Highway 1, 23, 24, 25, 25A, 25B, 26, 26A, 27, 28, 29, 30, 31 and 32 of**  
 21                  **Iberville Parish; Pointe Coupee Parish; Precincts 1-1, 1-2, 2-1, 2-2, 3-1, 3-2, 3-3,**  
 22                  **5-2, 6-1 and 6-2 of St. Helena Parish; Precincts 1-2 and 1-5 of St. Martin Parish**  
 23                  **and Precincts 2-1B, 2-2, 2-3, 4-1, 6-1, 6-2, 7-1, 7-2, 7-3 and 7-4 of West Baton**  
 24                  **Rouge Parish and Precincts 2-2 and 7-2 of West Feliciana Parish.**

25                  **(18) District 18 is composed of Precincts 1, 2, 3, 4, 5, 6, 7, 8, 9, 10, 11, 12,**  
 26                  **13, 14, 15, 16, 17, 18, 19, 20, 21, 22, 23, 24, 25, 26, 27, 28, 31, 32, 33, 34, 35, 40, 41,**  
 27                  **42, 43, 58 and 61 of Ascension Parish; Precincts 7B, 14, 15, 16, 17, 18, 21, 22, 31,**  
 28                  **32, 33, 34, 38 and 43 of Livingston Parish and Precincts 8, 8-A, 9, 10 and 11 of**  
 29                  **St. James Parish.**

30                  **(19) District 19 is composed of Precincts 104, 108, 115, 13-KB, 21-K,**

22-K, 23-K, 24-K, 26-K (Part) that portion southwest of Illinois Central Railroad, 29-K, 30-K, 31-K and 33-K of Jefferson Parish; Precincts 3-1, 3-2, 3-3, 3-4, 3-5, 3-6, 4-1, 6-3, 7-1, 7-2, 7-3 and 7-4 of Lafourche Parish; Precincts 1-2, 1-3, 1-5, 1-6, 2-1, 2-2, 2-3, 2-4, 2-5, 3-1, 3-2, 3-3, 3-4, 3-5, 3-6, 4-1, 4-2, 4-3, 4-4, 5-1, 5-2, 5-3, 5-4, 5-5, 6-1, 6-2, 6-3, 6-4, 6-5, 6-6, 6-7, 6-8, 7-1, 7-2, 7-3 and 7-4 of St. Charles Parish and Precincts 1-1, 4-2, 4-4, 4-8, 5-1, 5-2, 5-3, 5-4, 5-5, 5-6, 5-7, 6-1, 6-3, 6-4, 7-2, 7-3, 7-4, 7-5 and 7-7 of St. John the Baptist Parish.

(20) District 20 is composed of Precincts 2-12, 2-13, 2-14, 4-2, 4-3, 4-4, 4-5, 4-6, 8-1, 9-1, 9-2, 10-1, 10-2, 10-3, 10-4, 10-5, 10-6, 10-7, 10-8, 10-9, 10-10, 10-11, 10-12, 10-13, 10-14, 10-15, 10-16, 11-1, 11-2, 11-3 and 11-4 of Lafourche Parish and Precincts 14, 19, 20, 21, 23, 24, 25, 27, 28, 29, 31, 32, 33, 34, 35, 36, 38, 40, 41, 42, 43, 44, 45, 46, 47, 48, 49, 52, 53, 54, 55, 56, 57, 58, 59, 60, 61, 62, 63, 68, 70, 71, 72, 73, 78, 80, 82, 83, 88 and 89 of Terrebonne Parish.

(21) District 21 is composed of Precincts 6-3, 11-1, 11-2, 11-3, 11-4, 11-5, 12-1, 12-2 and 12-3 of Iberia Parish; Precincts 1-1, 2-2, 2-6, 2-8, 2-11, 5-2, 6-1, 6-2 and 6-4 of Lafourche Parish; St. Mary Parish and Precincts 1, 4, 5, 7, 8, 9, 10, 11, 12, 13, 15, 17, 18, 51, 64, 65, 66, 67, 69, 74, 76, 81, 84, 85, 86, 87 and 90 of Terrebonne Parish.

(22) District 22 is composed of Precincts 1-1, 1-2, 1-3, 2-1, 2-2, 2-3, 3-1, 3-2, 3-3, 3-4, 4-1, 4-2, 4-3, 4-4, 5-1, 5-2, 5-3, 5-4, 5-5, 6-1, 6-2, 6-4, 7-1, 7-2, 7-3, 7-4, 7-5, 8-1, 8-2, 8-4, 8-5, 9-1, 9-2, 9-3, 9-4, 9-5, 10-2, 10-3, 10-4, 10-5, 10-6, 10-7, 12-4, 13-1, 13-2, 13-3, 13-4, 14-1, 14-3 and 14-4 of Iberia Parish; Precincts 99 and 100 of Lafayette Parish; Precincts 3-1, 3-3, 3-5, 4-5, 4-7, 4-12 and 4-13 of St. Landry Parish and Precincts 1-1, 1-3, 1-4, 1-7, 2-1, 2-2, 2-3, 2-4, 3-1, 3-1A, 3-1B, 3-2, 3-3, 3-4, 3-4A, 3-5, 3-6, 3-9, 4-1, 4-1A, 4-2, 4-3, 4-4, 4-4A, 4-5, 4-6, 5-1, 5-2, 5-3, 5-4, 6-1, 6-2, 6-3, 6-3A, 6-3B, 6-4, 7-1A, 7-2A, 7-4, 7-4A, 8-1, 8-3, 8-4, 8-4A, 9-1, 9-2, 9-3, 9-4 and 9-5 of St. Martin Parish.

(23) District 23 is composed of Precincts 30A, 33, 34, 38, 39, 40, 41, 42, 43, 44, 45, 46, 47, 48, 49, 60, 65, 66, 67, 69, 70, 72, 73, 74, 75, 76, 77, 78, 79, 80, 81, 82, 83, 84, 85, 86, 87, 88, 89, 90, 91, 92, 93, 94, 95, 96, 97A, 97B, 98, 101, 102, 103,

1 104, 105, 106, 107, 108, 109, 110 and 111 of Lafayette Parish.

2 (24) District 24 is composed of Precincts 2, 4, 5, 6, 7, 9, 10, 11, 12, 13, 14,  
 3 15, 16, 17, 18, 19, 20, 21, 22, 23, 24, 25, 50, 51, 52, 53, 54, 55, 56, 57, 58, 59, 61, 62,  
 4 63, 64 and 68 of Lafayette Parish; Precincts 1-1, 1-2, 1-2A, 1-3, 1-3A, 1-4, 1-4A,  
 5 1-6, 1-7, 1-8, 1-9, 1-10, 1-11, 1-12, 1-13, 1-14, 1-15, 1-15A, 1-16, 1-17, 1-18, 1-20,  
 6 1-21, 1-22, 1-23, 1-25, 1-26, 1-26A, 1-28, 1-28A, 1-29, 2-1, 2-4, 3-2, 3-4, 3-6, 4-2,  
 7 4-3, 4-4, 4-6, 4-8, 4-9, 4-10, 4-11, 4-12A, 5-3, 5-6 (Part) except that portion north  
 8 of State Highway 103 and west of Interstate Highway 49, 6-1, 6-3, 6-4, 6-10,  
 9 6-11A, 6-15 and 6-16 of St. Landry Parish and Precincts 6-2A, 7-1 and 7-3 of St.  
 10 Martin Parish.

11 (25) District 25 is composed of Precincts 2-2, 2-3, 2-4, 2-5, 4-1, 4-2, 4-3,  
 12 4-4, 4-5, 4-6, 5-1A, 5-1B, 5-2A, 5-2B, 5-3, 5-4, 5-5, 6-1, 6-2, 6-3A, 6-3B, 6-4, 6-5,  
 13 6-6, 6-7, 6-8, 6-9, 6-10, 6-11, 6-12, 6-13, 6-14, 6-15, and 6-16 of Acadia Parish;  
 14 Precincts 260, 261, 262, 333, 336, 337, 338, 339, 362, 363, 364, 365, 366, 367N,  
 15 367S, 368, 369, 370, 371N, 371S, 800, 801, 860N, 860S, 861E and 861W of  
 16 Calcasieu Parish; Cameron Parish and Jefferson Davis Parish.

17 (26) District 26 is composed of Precincts 1-1, 1-2A, 1-2B, 1-3A, 1-3B,  
 18 1-4A, 1-4B, 1-5A, 1-5B, 1-6, 1-7, 1-8, 1-9, 2-1, 3-1, 3-3A, 3-3B, 3-4, 3-6 and 3-7  
 19 of Acadia Parish; Precincts 1, 3, 8, 26, 27, 28A, 28B, 29, 31, 32, 35, 36, 37 and 71  
 20 of Lafayette Parish; Precincts 2-2, 2-3, 2-5, 2-6, 2-7, 2-8 and 2-9 of St. Landry  
 21 Parish and Vermilion Parish.

22 (27) District 27 is composed of Precincts 162E, 162W, 163, 164, 165, 166,  
 23 167, 300, 301, 302, 303, 304, 305, 306, 307, 308, 309E, 309W, 310, 311, 312, 313E,  
 24 313W, 314, 315E, 315W, 316E, 316W, 317, 318, 319, 320, 321, 322, 323, 324, 325,  
 25 326, 327, 328, 329, 330, 331, 332N, 332S, 334, 335, 360, 361, 400, 401, 402, 403,  
 26 404, 405, 406, 407, 408, 440, 441, 461, 462, 463, 464, 466E, 466W, 467, and 468  
 27 of Calcasieu Parish.

28 (28) District 28 is composed of Precincts 3-2, 3-5, 7-2, 7-3, and 7-4 of  
 29 Acadia Parish; Allen Parish; Precincts 2-1A, 2-2B, 2-2C, 2-4A, 2-4B, 2-4D, 2-5A,  
 30 2-5B, 2-5C, 2-7, 2-8, 3-1A, 3-1B, 3-1C, 3-3A, 3-3D, 4-1, 4-2, 5-1, 5-2, 6-1A, 7-1,

1 7-2, 7-3, 7-3A, 8-1, 8-2A, 8-2B, 8-3A, 9-1A, 9-1C, 9-2, 9-3A, 9-4A, 9-5C, 9-6A,  
 2 9-6B, 10-2B, 10-2C, 10-3A, 10-3D, 10-4, 10-5C, 11-1 and 11-2A of Avoyelles  
 3 Parish; Evangeline Parish; Precincts 1-5, 1-19, 1-24, 5-1, 5-2, 5-4, 5-5, 5-6 (Part)  
 4 that portion north of State Highway 103 and west of Interstate Highway 49, 5-8,  
 5 6-2, 6-5, 6-6, 6-7, 6-8, 6-9, 6-11, 6-13, 6-14 and 6-16A of St. Landry Parish.

6 (29) District 29 is composed of Precincts 1-1, 1-2, 1-3, 2-1, 2-2, 3-1, 7-1,  
 7 7-2, 7-3 and 7-4 of Bienville Parish; Precincts 2-2, 3-1, 3-2, 3-3, 4-2 and 8-1 of  
 8 Grant Parish; Precincts 16, 17, 17A, 18, 19, 19A, 19B, 20, 20A and 25 of Jackson  
 9 Parish; Precincts 1-1, 1-2, 1-3, 2-1, 2-2, 3-1, 9-1, 10-1, 10-3, 10-5, 11-1, 11-3 and  
 10 12-1 of Lincoln Parish; Precincts 1-2, 1-3, 1-4, 1-4B, 1-5, 1-5A, 1-8 and 1-13 of  
 11 Natchitoches Parish; Precincts C1, C2, C3, C4, C5, C6, C7, C8, C9, C10, C11,  
 12 C13, C14, C15, C17, C18, C19, C20, C21, C22, C24, C25, C28, C38, C39, C40,  
 13 N1, N2, N3, N4, N5, N6, N8, N9, N11, N15, N19, N20, N21, S4, S14, S20 and S21  
 14 of Rapides Parish and Precincts 1-1, 1-4, 1-5, 2-1, 2-3, 3-1B, 5-1, 5-3, 6-1, 7-1,  
 15 7-1A, 7-2A and 7-5 of Winn Parish.

16 (30) District 30 is composed of Beauregard Parish; Precincts 160E,  
 17 160W, 161, 460E, 460W, 465, 469, 560, 561, 562, 600, 601, 602, 603, 660, 661,  
 18 662, 663, 664, 700, 701, 702, 703, 760, 761 and 762 of Calcasieu Parish and  
 19 Vernon Parish.

20 (31) District 31 is composed of Precincts 1-1, 1-2, 1-3 and 2-1 of Grant  
 21 Parish; Precincts 1-1, 1-1A, 1-3A, 1-4A, 1-6, 1-7, 1-9, 1-9A, 1-10, 1-10A, 1-10B,  
 22 1-11, 1-12, 1-14, 2-1, 2-2, 2-3, 2-4, 2-5, 2-6, 2-7, 2-7A, 2-8, 2-9, 3-1, 3-2, 3-3, 3-4,  
 23 3-5, 3-6, 3-7, 3-8, 3-9, 3-10, 4-1, 4-2, 4-3, 4-4, 4-5, 4-6, 4-7, 4-8 and 4-9 of  
 24 Natchitoches Parish; Precincts C23, C26, C27, C30, C31, C32, C33, C34, C35,  
 25 C36, C37, C41, C42, S1, S2, S5, S6, S7, S8, S9, S10, S11, S13, S15, S17, S18, S19,  
 26 S22, S23, S24, S25, S26, S27, S28 and S29 of Rapides Parish; Red River Parish;  
 27 Sabine Parish and Precincts 1-3, 2-2, 3-1, 3-1A, 3-1C, 3-2, 3-2A, 3-3, 4-1, 4-2,  
 28 4-2A, 4-3, 4-4, 4-5 and 6-1A of Winn Parish.

29 (32) District 32 is composed of Precincts 1-1, 1-2, 2-2A, 2-3A and 6-2A  
 30 of Avoyelles Parish; Caldwell Parish; Catahoula Parish; Precincts 1-3 (Part)



1 that portion northwest of US Highway 65; 3-1, 3-2, 3-3, 4-1, 4-2, 4-3, 4-4, 4-6,  
 2 5-2, 5-3, 5-4, 5-5, 5-6 and 5-7 of Concordia Parish; Franklin Parish; La Salle  
 3 Parish; Precincts 25, 26, 57 and 58 of Ouachita Parish; Precincts N10, N22, N23,  
 4 N24, N25, N26, N27, N28, N29 and S16 of Rapides Parish; Precinct 1 of  
 5 Richland Parish and Precincts 1-1, 2-1, 3-2, 3-3, 4-1, 4-2, 4-3, 5-1, 5-2, 5-3, 6-1,  
 6 6-2, 6-3, 7-1 and 7-4 of West Feliciana Parish.

7 (33) District 33 is composed of Precincts 1, 8, 10, 11, 21, 22, 31, 34, 35,  
 8 36, 37, 81, 84, 85, 87, 88, 91, 92, 93, 94 and 96 of Claiborne Parish; Precincts 4-1,  
 9 4-2, 4-3, 4-4, 4-5 and 5-2 of Lincoln Parish; Precincts 2, 3, 4, 6, 13, 20, 21, 22, 23,  
 10 24, 25, 26, 27, 28, 29, 30, 31, 34, 35, 39, 40, 41, 42, 43, 44, 45, 47, 48, 49, 50, 51, 53  
 11 and 54 of Morehouse Parish; Precincts 1, 2, 3, 4, 5, 6, 7, 8, 9, 35, 36, 37, 41, 43,  
 12 44, 44A, 49, 50 and 76 of Ouachita Parish; Union Parish and West Carroll  
 13 Parish.

14 (34) District 34 is composed of Precincts 1-1, 1-2, 1-3 (Part) that portion  
 15 southeast of US Highway 65, 1-4, 2-1, 2-4 and 5-1 of Concordia Parish; East  
 16 Carroll Parish; Madison Parish; Precincts 1, 5, 7, 8, 9, 10, 12, 14, 15, 16, 17, 18,  
 17 33, 36, 37, 38, 52 and 55 of Morehouse Parish; Precincts 9A, 10, 11, 12, 13, 14,  
 18 15, 16, 17, 18, 19, 20, 21, 22, 23, 24, 27, 28, 29, 30, 60, 63, 65, 66, 67, 68, 69, 70, 72,  
 19 73, 74 and 79 of Ouachita Parish; Precincts 2, 3, 4, 5, 6, 7, 8, 9, 10, 11, 12, 13, 14,  
 20 15, 16, 17, 18, 19, 20, 21, 22, 23, 24, 25, 26, 27, 28, 29, 30, 31, 32, 33, 34 and 35 of  
 21 Richland Parish and Tensas Parish.

22 (35) District 35 is composed of Precincts 2-3, 4-1, 5-1, 5-2, 6-1, 6-2, 6-3,  
 23 7-1, 7-2, 7-3, 7-4, 8-2 and 8-3 of Grant Parish; Precincts 1, 2, 3, 4, 5, 5A, 6, 7, 8,  
 24 8A, 9, 10, 11, 13, 14A, 15, 22, 24 and 26A of Jackson Parish; Precincts 3-2, 3-3,  
 25 3-4, 3-5, 5-1, 5-3, 5-4, 6-1, 6-2, 6-3, 6-4, 6-5, 7-1, 7-2, 8-1, 8-2, 8-3, 9-2, 9-3, 10-2,  
 26 10-4, 11-2 and 12-2 of Lincoln Parish; Precincts 31, 32, 33, 34, 38, 39, 40, 42, 45,  
 27 46, 47, 48, 51, 52, 53, 54, 55, 56, 59, 61, 62, 64, 71, 75, 77 and 78 of Ouachita  
 28 Parish; Precincts N7, N12, N13, N14, N16, N17 and N18 of Rapides Parish and  
 29 Precincts 5-2, 5-4, 5-5, 6-3, 6-4, 6-5, 6-6, 7-2, 7-7 and 7-7A of Winn Parish.

30 (36) District 36 is composed of Precincts 2-3, 3-2, 3-3, 3-4, 3-5, 4-1, 4-2,

4-4, 5-1, 5-2, 5-3, 5-4, 6-1, 6-2, 6-3 and 6-4 of Bienville Parish; Precincts 2-1, 2-17A, 2-18A, 2-18B, 2-18C, 2-21A, 2-21B, 2-21C, 2-21D, 2-22A, 2-22B, 3-1, 3-2, 3-3, 3-4, 4-1A, 4-2, 4-3A, 4-3B, 4-3C, 4-4A, 4-4B, 4-5A, 4-6, 4-7, 4-9, 4-11A, 4-11B and 4-11C of Bossier Parish; Precincts 3, 5, 7, 41, 42 and 51 of Claiborne Parish and Webster Parish.

(37) District 37 is composed of Precincts 1-1, 1-2, 1-3, 1-3A, 1-4, 1-4A, 1-5, 2-2, 2-3, 2-4, 2-5, 2-6, 2-7, 2-8, 2-9, 2-10, 2-11, 2-11A, 2-12A, 2-12B, 2-12C, 2-13, 2-14, 2-15, 2-16, 2-16A, 2-17B, 2-19, 2-20, 2-23, 4-8A, 4-8B, 4-8C, 4-8D and 4-10 of Bossier Parish and Precincts 6, 7, 8, 9, 10, 11, 12, 13, 14, 15, 16, 17, 20, 21, 22, 24, 26, 27, 48, 49, 64, 76, 77, 99, 102, 104, 109 and 129 of Caddo Parish.

(38) District 38 is composed of Precincts 4, 56, 62, 63, 65, 66, 68, 72, 75, 78, 79, 84, 85, 87, 88, 89, 90, 91, 92, 93, 94, 95, 97, 100, 101, 103, 105, 107, 108, 110, 122, 123, 125, 126, 127, 128, 132, 133, 134 and 159 of Caddo Parish and De Soto Parish.

(39) District 39 is composed of Precincts 1, 2, 3, 5, 23, 25, 28, 29, 30, 31, 32, 34, 35, 36, 37, 38, 39, 40, 41, 42, 43, 44, 45, 46, 47, 50, 51, 52, 53, 54, 55, 57, 58, 59, 60, 61, 67, 69, 70, 71, 73, 74, 80, 81, 82, 83, 86, 98, 106, 130, 135, 136, 137, 138, 139, 140, 142, 143, 144, 145, 146, 149, 150, 151, 154, 155, 156, 157 and 158 of Caddo Parish.

**B. The precincts referenced in this Section are those precincts identified as Voting Districts (VTDs) in the 2010 Census Redistricting TIGER/Line Shapefiles for the State of Louisiana.**

**C. When a precinct referenced in this Section has been subdivided by action of the parish governing authority on a nongeographic basis or subdivided by action of the parish governing authority on a geographic basis in accordance with the provisions of R.S. 18:532.1, the enumeration in this Section of the general precinct designation shall include all nongeographic and all geographic subdivisions thereof, however such subdivisions may be designated. The territorial limits of the districts as provided in this Section shall continue in effect without change regardless of any changes made to the precincts by the parish governing authority.**

1           Section 2.(A) The provisions of Section 1 of this Act shall be effective for the limited  
2 purposes of qualifying candidates for and electing members to the Senate of the Legislature  
3 of Louisiana at the next regularly scheduled election for members of the Senate in 2011,  
4 commencing on the date and at the time that the qualifying period opens for such offices.  
5 The effectiveness of Section 1 of this Act for such qualification and election shall not reduce  
6 the term of office of any member of the Senate nor change any Senate district as established  
7 in R.S. 24:35.1 until such provisions of law are repealed pursuant to Section 4 of this Act.

8           (B) Except as provided in Subsection A of this Section, the provisions of Section 1  
9 of this Act shall be effective at 10:00 a.m. on January 9, 2012.

10          Section 3. A vacancy in the office of a member elected to serve a term of office  
11 commencing at 10:00 a.m. on January 9, 2012, shall be filled, as required by law from the  
12 district created by Section 1 of this Act from which the member was elected.

13          Section 4. R.S. 24:35.1 is hereby repealed, effective at 10:00 a.m., January 9, 2012.

14          Section 5. The provisions of this Section and Sections 2 and 3 of this Act shall  
15 become effective upon signature by the governor or, if not signed by the governor, upon  
16 expiration of the time for bills to become law without signature by the governor, as provided  
17 by Article III, Section 18 of the Constitution of Louisiana. If vetoed by the governor and  
18 subsequently approved by the legislature, this Act shall become effective on the day  
19 following such approval.

---

PRESIDENT OF THE SENATE

---

SPEAKER OF THE HOUSE OF REPRESENTATIVES

---

GOVERNOR OF THE STATE OF LOUISIANA

APPROVED: \_\_\_\_\_

## Plan Statistics

<u>Districts:</u>	<u># of Members</u>	<u>Actual Population</u>	<u>Ideal Population</u>	<u>Absolute Deviation</u>	<u>Relative Deviation</u>
District 1	1	119,653	116,240	3,413	2.936%
District 2	1	111,274	116,240	-4,966	-4.272%
District 3	1	110,993	116,240	-5,247	-4.514%
District 4	1	110,743	116,240	-5,497	-4.729%
District 5	1	110,517	116,240	-5,723	-4.923%
District 6	1	120,032	116,240	3,792	3.262%
District 7	1	110,828	116,240	-5,412	-4.656%
District 8	1	119,917	116,240	3,677	3.163%
District 9	1	118,074	116,240	1,834	1.578%
District 10	1	118,865	116,240	2,625	2.258%
District 11	1	121,670	116,240	5,430	4.671%
District 12	1	121,321	116,240	5,081	4.371%
District 13	1	118,958	116,240	2,718	2.338%
District 14	1	115,785	116,240	-455	-0.391%
District 15	1	119,974	116,240	3,734	3.212%
District 16	1	118,106	116,240	1,866	1.605%
District 17	1	111,041	116,240	-5,199	-4.473%
District 18	1	115,438	116,240	-802	-0.690%
District 19	1	111,296	116,240	-4,944	-4.253%
District 20	1	116,242	116,240	2	0.002%
District 21	1	121,985	116,240	5,745	4.942%
District 22	1	121,775	116,240	5,535	4.762%
District 23	1	120,896	116,240	4,656	4.006%
District 24	1	121,168	116,240	4,928	4.240%
District 25	1	120,244	116,240	4,004	3.445%
District 26	1	121,256	116,240	5,016	4.315%
District 27	1	118,161	116,240	1,921	1.653%
District 28	1	119,732	116,240	3,492	3.004%
District 29	1	118,159	116,240	1,919	1.651%
District 30	1	113,853	116,240	-2,387	-2.054%
District 31	1	110,877	116,240	-5,363	-4.614%
District 32	1	112,248	116,240	-3,992	-3.434%
District 33	1	113,411	116,240	-2,829	-2.434%
District 34	1	114,714	116,240	-1,526	-1.313%
District 35	1	112,602	116,240	-3,638	-3.130%
District 36	1	111,024	116,240	-5,216	-4.487%
District 37	1	110,770	116,240	-5,470	-4.706%
District 38	1	111,806	116,240	-4,434	-3.815%
District 39	1	117,964	116,240	1,724	1.483%

---

<b>Grand Total:</b>	<b>39</b>	<b>4,533,372</b>	<b>4,533,360</b>
---------------------	-----------	------------------	------------------

---

Ideal Population Per Member:	116240	
Number of Districts for Plan Type:	39	
Range of District Populations:	110,517	to 121,985
Absolute Mean Deviation:	294	
Absolute Range:	-5,723	to 5,745
Absolute Overall Range:	11,468	
Relative Mean Deviation:	3.23%	
Relative Range:	-4.92%	to 4.94%
Relative Overall Range:	9.86%	

<b><i>Ideal - Actual:</i></b>	<b>-12</b>
<b><i>Remainder:</i></b>	<b>12</b>
<b><i>Unassigned Population:</i></b>	<b>0</b>

# Total Population

	Total Population	Total White	Total Black	Total Asian	Total American Indian	Total Other	Total Hispanic	Reg Total Jan 2011
District 1	119,653	91,866	21,624	2,329	1,332	2,502	6,499	71,323
	100.000%	76.777%	18.072%	1.946%	1.113%	2.091%	5.432%	79.744%
District 2	111,274	46,382	62,848	498	452	1,094	2,617	67,895
	100.000%	41.683%	56.480%	0.448%	0.406%	0.983%	2.352%	81.408%
District 3	110,993	34,531	65,868	7,031	873	2,690	5,963	70,161
	100.000%	31.111%	59.344%	6.335%	0.787%	2.424%	5.372%	83.411%
District 4	110,743	34,331	72,402	1,476	441	2,093	5,054	68,626
	100.000%	31.001%	65.378%	1.333%	0.398%	1.890%	4.564%	80.121%
District 5	110,517	45,044	59,649	2,366	626	2,832	7,323	68,736
	100.000%	40.758%	53.973%	2.141%	0.566%	2.563%	6.626%	74.921%
District 6	120,032	83,460	31,479	2,268	752	2,073	4,677	72,879
	100.000%	69.531%	26.226%	1.889%	0.626%	1.727%	3.896%	80.321%
District 7	110,828	39,343	62,132	3,939	782	4,632	10,167	59,726
	100.000%	35.499%	56.062%	3.554%	0.706%	4.179%	9.174%	73.394%
District 8	119,917	68,420	38,444	6,971	1,631	4,451	10,732	72,010
	100.000%	57.056%	32.059%	5.813%	1.360%	3.712%	8.950%	80.498%
District 9	118,074	95,540	12,226	4,462	686	5,160	13,706	71,342
	100.000%	80.915%	10.355%	3.779%	0.581%	4.370%	11.608%	74.009%
District 10	118,865	93,693	13,390	4,590	767	6,425	18,592	70,357
	100.000%	78.823%	11.265%	3.862%	0.645%	5.405%	15.641%	74.629%
District 11	121,670	106,436	10,691	1,760	1,046	1,737	5,460	76,697
	100.000%	87.479%	8.787%	1.447%	0.860%	1.428%	4.488%	85.872%
District 12	121,321	83,996	34,634	613	873	1,205	3,236	69,612
	100.000%	69.235%	28.547%	0.505%	0.720%	0.993%	2.667%	76.329%
District 13	118,958	109,766	5,973	864	953	1,402	3,560	67,456
	100.000%	92.273%	5.021%	0.726%	0.801%	1.179%	2.993%	78.376%
District 14	115,785	33,912	75,627	4,112	424	1,710	3,981	59,935
	100.000%	29.289%	65.317%	3.551%	0.366%	1.477%	3.438%	67.300%
District 15	119,974	26,522	87,971	2,787	433	2,261	4,288	65,246
	100.000%	22.106%	73.325%	2.323%	0.361%	1.885%	3.574%	75.365%
District 16	118,106	89,139	21,736	4,739	504	1,988	5,231	71,600
	100.000%	75.474%	18.404%	4.012%	0.427%	1.683%	4.429%	74.714%
District 17	111,041	68,952	40,232	426	612	819	1,970	74,065
	100.000%	62.096%	36.232%	0.384%	0.551%	0.738%	1.774%	87.676%
District 18	115,438	96,375	14,794	1,328	723	2,218	4,860	67,986
	100.000%	83.486%	12.816%	1.150%	0.626%	1.921%	4.210%	82.088%
District 19	111,296	66,721	39,098	1,085	887	3,505	7,845	64,896
	100.000%	59.949%	35.130%	0.975%	0.797%	3.149%	7.049%	79.444%
District 20	116,242	86,314	16,209	1,219	9,015	3,485	5,524	60,955
	100.000%	74.254%	13.944%	1.049%	7.755%	2.998%	4.752%	70.502%
District 21	121,985	81,700	33,232	1,854	2,718	2,481	4,854	70,508
	100.000%	66.975%	27.243%	1.520%	2.228%	2.034%	3.979%	77.811%
District 22	121,775	83,111	33,720	2,383	770	1,791	3,230	77,122
	100.000%	68.250%	27.690%	1.957%	0.632%	1.471%	2.652%	86.292%
District 23	120,896	100,058	14,929	3,137	765	2,007	4,750	72,241
	100.000%	82.764%	12.349%	2.595%	0.633%	1.660%	3.929%	76.941%
District 24	121,168	49,875	68,581	639	590	1,483	2,688	78,096
	100.000%	41.162%	56.600%	0.527%	0.487%	1.224%	2.218%	88.746%
District 25	120,244	98,518	18,230	1,427	918	1,151	2,448	74,571
	100.000%	81.932%	15.161%	1.187%	0.763%	0.957%	2.036%	83.910%
District 26	121,256	94,618	22,371	1,715	704	1,848	3,889	70,537
	100.000%	78.032%	18.449%	1.414%	0.581%	1.524%	3.207%	79.560%
District 27	118,161	73,635	40,862	1,261	899	1,504	3,189	72,724
	100.000%	62.318%	34.582%	1.067%	0.761%	1.273%	2.699%	82.470%
District 28	119,732	83,062	33,396	629	1,621	1,024	2,178	69,260
	100.000%	69.373%	27.892%	0.525%	1.354%	0.855%	1.819%	77.354%
District 29	118,159	45,498	69,302	1,267	931	1,161	2,311	65,979
	100.000%	38.506%	58.651%	1.072%	0.788%	0.983%	1.956%	75.114%
District 30	113,853	91,826	15,711	1,869	2,154	2,293	5,275	57,015
	100.000%	80.653%	13.799%	1.642%	1.892%	2.014%	4.633%	68.464%
District 31	110,877	80,380	23,934	1,154	4,103	1,306	3,149	66,623
	100.000%	72.495%	21.586%	1.041%	3.700%	1.178%	2.840%	78.502%
District 32	112,248	84,760	25,718	402	828	540	1,585	66,512
	100.000%	75.511%	22.912%	0.358%	0.738%	0.481%	1.412%	77.627%
District 33	113,411	78,810	31,914	912	552	1,223	2,359	70,788
	100.000%	69.491%	28.140%	0.804%	0.487%	1.078%	2.080%	81.983%
District 34	114,714	35,623	77,431	630	410	620	1,555	71,016
	100.000%	31.054%	67.499%	0.549%	0.357%	0.540%	1.356%	85.073%
District 35	112,602	94,652	14,513	1,398	974	1,065	3,153	65,871
	100.000%	84.059%	12.889%	1.242%	0.865%	0.946%	2.800%	75.845%

# Total Population

	Total Population	Total White	Total Black	Total Asian	Total American Indian	Total Other	Total Hispanic	Reg Total Jan 2011
District 36	111,024	81,146	26,831	1,017	1,006	1,024	2,865	64,725
	100.000%	73.089%	24.167%	0.916%	0.906%	0.922%	2.581%	77.496%
District 37	110,770	76,100	27,315	2,996	999	3,360	6,896	59,440
	100.000%	68.701%	24.659%	2.705%	0.902%	3.033%	6.226%	69.997%
District 38	111,806	67,927	40,025	1,504	1,129	1,221	3,048	67,536
	100.000%	60.754%	35.799%	1.345%	1.010%	1.092%	2.726%	79.455%
District 39	117,964	34,150	81,843	494	670	807	1,853	68,308
	100.000%	28.950%	69.380%	0.419%	0.568%	0.684%	1.571%	79.083%
Grand Total	4,533,372	2,836,192	1,486,885	81,551	46,553	82,191	192,560	2,680,375
	100.000%	62.563%	32.799%	1.799%	1.027%	1.813%	4.248%	78.480%

# Voter Registration

	Reg Total Jan 2011	Reg White Jan 2011	Reg Black Jan 2011	Reg Other Jan 2011	Reg Dem Total Jan 2011	Reg Rep Total Jan 2011	Reg Other Total Jan 2011
District 1	71,323	56,686	10,275	4,362	26,598	25,317	19,408
	79.744%	79.478%	14.406%	6.116%	37.292%	35.496%	27.211%
District 2	67,895	29,199	37,559	1,137	48,176	8,433	11,286
	81.408%	43.006%	55.319%	1.675%	70.957%	12.421%	16.623%
District 3	70,161	22,933	41,679	5,549	47,060	7,127	15,975
	83.411%	32.686%	59.405%	7.909%	67.074%	10.158%	22.769%
District 4	68,626	21,739	43,064	3,823	46,682	7,998	13,946
	80.121%	31.677%	62.752%	5.571%	68.024%	11.654%	20.322%
District 5	68,736	26,838	36,598	5,300	43,767	7,913	17,056
	74.921%	39.045%	53.244%	7.711%	63.674%	11.512%	24.814%
District 6	72,879	55,424	14,833	2,622	30,023	25,619	17,237
	80.321%	76.049%	20.353%	3.598%	41.196%	35.153%	23.652%
District 7	59,726	23,286	31,424	5,016	35,390	10,126	14,210
	73.394%	38.988%	52.614%	8.398%	59.254%	16.954%	23.792%
District 8	72,010	43,637	21,320	7,053	36,440	15,848	19,721
	80.498%	60.599%	29.607%	9.794%	50.604%	22.008%	27.386%
District 9	71,342	61,804	4,219	5,319	24,779	29,536	17,027
	74.009%	86.631%	5.914%	7.456%	34.733%	41.401%	23.867%
District 10	70,357	58,067	4,973	7,317	23,655	28,974	17,728
	74.629%	82.532%	7.068%	10.400%	33.621%	41.181%	25.197%
District 11	76,697	67,686	4,921	4,090	19,653	37,817	19,227
	85.872%	88.251%	6.416%	5.333%	25.624%	49.307%	25.069%
District 12	69,612	50,528	17,270	1,814	35,885	18,797	14,930
	76.329%	72.585%	24.809%	2.606%	51.550%	27.003%	21.447%
District 13	67,456	63,174	2,306	1,976	23,169	26,324	17,963
	78.376%	93.652%	3.419%	2.929%	34.347%	39.024%	26.629%
District 14	59,935	15,455	41,867	2,613	39,130	8,249	12,556
	67.300%	25.786%	69.854%	4.360%	65.287%	13.763%	20.949%
District 15	65,246	17,838	45,101	2,307	45,265	8,335	11,646
	75.365%	27.340%	69.125%	3.536%	69.376%	12.775%	17.849%
District 16	71,600	59,313	8,545	3,742	23,763	31,437	16,400
	74.714%	82.839%	11.934%	5.226%	33.189%	43.906%	22.905%
District 17	74,065	46,992	25,551	1,522	46,796	14,438	12,831
	87.676%	63.447%	34.498%	2.055%	63.182%	19.494%	17.324%
District 18	67,986	58,037	7,240	2,709	27,663	22,467	17,856
	82.088%	85.366%	10.649%	3.985%	40.689%	33.047%	26.264%
District 19	64,896	41,102	20,770	3,024	33,763	15,590	15,543
	79.444%	63.335%	32.005%	4.660%	52.026%	24.023%	23.951%
District 20	60,955	49,747	7,591	3,617	30,449	14,878	15,628
	70.502%	81.613%	12.453%	5.934%	49.953%	24.408%	25.639%
District 21	70,508	49,946	18,044	2,518	34,383	19,150	16,975
	77.811%	70.837%	25.591%	3.571%	48.765%	27.160%	24.075%
District 22	77,122	55,055	19,805	2,262	41,429	19,653	16,040
	86.292%	71.387%	25.680%	2.933%	53.719%	25.483%	20.798%
District 23	72,241	63,077	5,836	3,328	22,098	31,337	18,806
	76.941%	87.315%	8.079%	4.607%	30.589%	43.378%	26.032%
District 24	78,096	33,503	42,523	2,070	49,535	12,740	15,821
	88.746%	42.900%	54.450%	2.651%	63.428%	16.313%	20.258%
District 25	74,571	62,914	9,867	1,790	38,581	18,756	17,234
	83.910%	84.368%	13.232%	2.400%	51.737%	25.152%	23.111%
District 26	70,537	57,587	11,267	1,683	37,523	16,261	16,753
	79.560%	81.641%	15.973%	2.386%	53.196%	23.053%	23.751%
District 27	72,724	46,996	23,361	2,367	38,787	16,335	17,602
	82.470%	64.622%	32.123%	3.255%	53.335%	22.462%	24.204%
District 28	69,260	50,902	16,982	1,376	44,319	12,459	12,482
	77.354%	73.494%	24.519%	1.987%	63.989%	17.989%	18.022%
District 29	65,979	27,517	36,570	1,892	40,860	11,537	13,582
	75.114%	41.706%	55.427%	2.868%	61.929%	17.486%	20.585%
District 30	57,015	48,399	6,057	2,559	26,502	15,242	15,271
	68.464%	84.888%	10.624%	4.488%	46.483%	26.733%	26.784%
District 31	66,623	51,540	12,262	2,821	33,000	19,464	14,159
	78.502%	77.361%	18.405%	4.234%	49.532%	29.215%	21.252%
District 32	66,512	53,920	11,633	958	34,210	18,963	13,340
	77.627%	81.068%	17.490%	1.440%	51.434%	28.511%	20.057%
District 33	70,788	52,624	16,377	1,787	31,134	24,681	14,973
	81.983%	74.340%	23.135%	2.524%	43.982%	34.866%	21.152%
District 34	71,016	22,750	46,608	1,659	46,564	10,863	13,588
	85.073%	32.035%	65.630%	2.336%	65.568%	15.297%	19.134%
District 35	65,871	58,044	5,795	2,032	22,780	27,272	15,819
	75.845%	88.118%	8.797%	3.085%	34.583%	41.402%	24.015%

# Voter Registration

	Reg Total Jan 2011	Reg White Jan 2011	Reg Black Jan 2011	Reg Other Jan 2011	Reg Dem Total Jan 2011	Reg Rep Total Jan 2011	Reg Other Total Jan 2011
District 36	64,725	48,528	14,558	1,639	26,907	23,196	14,622
	77.496%	74.976%	22.492%	2.532%	41.571%	35.838%	22.591%
District 37	59,440	44,890	11,682	2,868	21,425	23,612	14,403
	69.997%	75.522%	19.653%	4.825%	36.045%	39.724%	24.231%
District 38	67,536	43,283	21,717	2,536	32,117	21,637	13,782
	79.455%	64.089%	32.156%	3.755%	47.555%	32.038%	20.407%
District 39	68,308	20,157	46,027	2,124	44,726	9,809	13,773
	79.083%	29.509%	67.382%	3.109%	65.477%	14.360%	20.163%
<b>Grand Total</b>	<b>2,680,375</b>	<b>1,761,117</b>	<b>804,077</b>	<b>115,181</b>	<b>1,354,986</b>	<b>718,190</b>	<b>607,199</b>



# Splits

	Total Population	Total White	Total Black	Total Asian	Total American Indian	Total Other	VAP Total	VAP White	VAP Black	VAP Asian	VAP American Indian	VAP Other	Reg Total Jan 2011	Reg White Jan 2011	Reg Black Jan 2011	Reg Other Jan 2011
District 1																
*Orleans	1,032	856	73	52	2	49	847	729	55	32	2	29	519	456	27	36
*Plaquemines	1,943	741	1,147	16	20	19	1,503	594	866	11	14	18	1,355	549	752	54
*St. Bernard	14,693	11,609	2,223	309	238	314	10,871	8,831	1,426	230	163	221	9,690	8,331	876	483
*St. Tammany	101,985	78,660	18,181	1,952	1,072	2,120	76,219	60,586	11,990	1,350	804	1,489	59,759	47,350	8,620	3,789
District 1	119,653	91,866	21,624	2,329	1,332	2,502	89,440	70,740	14,337	1,623	983	1,757	71,323	56,686	10,275	4,362
	100.000%	76.777%	18.072%	1.946%	1.113%	2.091%	100.000%	79.092%	16.030%	1.815%	1.099%	1.964%	79.744%	79.478%	14.406%	6.116%
District 2																
*Ascension	19,400	6,125	12,719	106	63	387	14,024	4,926	8,720	83	47	248	11,807	3,926	7,583	298
*Assumption	12,397	5,549	6,659	22	47	120	9,254	4,387	4,729	16	28	94	8,059	3,679	4,346	34
*Iberville	10,438	4,061	6,266	33	20	58	8,734	3,564	5,087	25	18	40	4,853	1,900	2,866	87
*Lafourche	15,837	9,515	5,872	141	145	164	11,932	7,712	3,917	104	96	103	8,961	5,811	2,940	210
*St. Charles	1,302	152	1,148	1	1	0	1,044	151	891	1	1	0	563	19	536	8
*St. James	17,062	7,059	9,851	28	42	82	12,757	5,631	7,021	21	33	51	11,715	4,985	6,576	154
*St. John the Baptist	20,874	6,505	14,033	81	79	176	15,351	5,269	9,855	48	63	116	13,117	4,017	8,824	276
*West Baton Rouge	13,964	7,416	6,300	86	55	107	10,305	5,698	4,430	70	39	68	8,820	4,862	3,888	70
District 2	111,274	46,382	62,848	498	452	1,094	83,401	37,338	44,650	368	325	720	67,895	29,199	37,559	1,137
	100.000%	41.683%	56.480%	0.448%	0.406%	0.983%	100.000%	44.769%	53.537%	0.441%	0.390%	0.863%	81.408%	43.006%	55.319%	1.675%
District 3																
*Jefferson	30,607	10,846	17,541	1,314	287	619	23,217	8,934	12,655	965	200	463	19,149	6,447	11,507	1,195
*Orleans	59,182	8,715	43,845	5,153	302	1,167	45,049	7,901	31,998	3,954	245	951	37,344	5,485	28,219	3,640
*St. Bernard	21,204	14,970	4,482	564	284	904	15,849	11,659	2,912	410	207	661	13,668	11,001	1,953	714
District 3	110,993	34,531	65,868	7,031	873	2,690	84,115	28,494	47,565	5,329	652	2,075	70,161	22,933	41,679	5,549
	100.000%	31.111%	59.344%	6.335%	0.787%	2.424%	100.000%	33.875%	56.548%	6.335%	0.775%	2.467%	83.411%	32.686%	59.405%	7.909%
District 4																
*Orleans	110,743	34,331	72,402	1,476	441	2,093	85,653	29,808	52,531	1,229	374	1,711	68,626	21,739	43,064	3,823
District 4	110,743	34,331	72,402	1,476	441	2,093	85,653	29,808	52,531	1,229	374	1,711	68,626	21,739	43,064	3,823
	100.000%	31.001%	65.378%	1.333%	0.398%	1.890%	100.000%	34.801%	61.330%	1.435%	0.437%	1.998%	80.121%	31.677%	62.752%	5.571%
District 5																
*Jefferson	1,524	262	1,218	23	0	21	1,215	231	950	17	0	17	1,137	156	909	72
*Orleans	108,993	44,782	58,431	2,343	626	2,811	90,530	40,467	45,033	2,080	538	2,412	67,599	26,682	35,689	5,228
District 5	110,517	45,044	59,649	2,366	626	2,832	91,745	40,698	45,983	2,097	538	2,429	68,736	26,838	36,598	5,300
	100.000%	40.758%	53.973%	2.141%	0.566%	2.563%	100.000%	44.360%	50.120%	2.286%	0.586%	2.648%	74.921%	39.045%	53.244%	7.711%
District 6																
*East Baton Rouge	66,471	51,132	11,981	1,775	430	1,153	50,595	40,472	7,723	1,258	314	828	43,173	36,280	5,230	1,663
*Livingston	1,769	1,556	184	5	20	4	1,297	1,152	129	3	11	2	1,151	1,039	81	31

## Splits

	Total Population	Total White	Total Black	Total Asian	Total American Indian	Total Other	VAP Total	VAP White	VAP Black	VAP Asian	VAP American Indian	VAP Other	Reg Total Jan 2011	Reg White Jan 2011	Reg Black Jan 2011	Reg Other Jan 2011
District 6																
*St. Helena	3,970	1,500	2,410	4	27	29	2,912	1,177	1,692	4	22	17	2,844	1,068	1,736	40
*Tangipahoa	47,822	29,272	16,904	484	275	887	35,931	23,693	11,063	366	212	597	25,711	17,037	7,786	888
District 6	120,032	83,460	31,479	2,268	752	2,073	90,735	66,494	20,607	1,631	559	1,444	72,879	55,424	14,833	2,622
	100.000%	69.531%	26.226%	1.889%	0.626%	1.727%	100.000%	73.284%	22.711%	1.798%	0.616%	1.591%	80.321%	76.049%	20.353%	3.598%
District 7																
*Jefferson	46,439	14,830	26,093	1,987	292	3,237	34,048	12,154	17,696	1,588	202	2,408	23,722	8,382	12,930	2,410
*Orleans	51,483	13,771	34,773	1,592	267	1,080	38,205	11,606	24,305	1,272	202	820	29,017	8,679	18,047	2,291
*Plaquemines	12,906	10,742	1,266	360	223	315	9,124	7,818	754	223	146	183	6,987	6,225	447	315
District 7	110,828	39,343	62,132	3,939	782	4,632	81,377	31,578	42,755	3,083	550	3,411	59,726	23,286	31,424	5,016
	100.000%	35.499%	56.062%	3.554%	0.706%	4.179%	100.000%	38.805%	52.539%	3.789%	0.676%	4.192%	73.394%	38.988%	52.614%	8.398%
District 8																
*Jefferson	111,724	63,657	35,906	6,503	1,318	4,340	83,370	50,283	24,322	4,761	931	3,073	65,818	39,870	19,444	6,504
*Plaquemines	8,193	4,763	2,538	468	313	111	6,086	3,674	1,747	349	236	80	6,192	3,767	1,876	549
District 8	119,917	68,420	38,444	6,971	1,631	4,451	89,456	53,957	26,069	5,110	1,167	3,153	72,010	43,637	21,320	7,053
	100.000%	57.056%	32.059%	5.813%	1.360%	3.712%	100.000%	60.317%	29.142%	5.712%	1.305%	3.525%	80.498%	60.599%	29.607%	9.794%
District 9																
*Jefferson	105,678	84,567	11,303	4,127	628	5,053	86,067	70,334	8,139	3,178	482	3,934	62,675	54,409	3,617	4,649
*Orleans	12,396	10,973	923	335	58	107	10,330	9,169	772	273	38	78	8,667	7,395	602	670
District 9	118,074	95,540	12,226	4,462	686	5,160	96,397	79,503	8,911	3,451	520	4,012	71,342	61,804	4,219	5,319
	100.000%	80.915%	10.355%	3.779%	0.581%	4.370%	100.000%	82.475%	9.244%	3.580%	0.539%	4.162%	74.009%	86.631%	5.914%	7.456%
District 10																
*Jefferson	118,865	93,693	13,390	4,590	767	6,425	94,276	75,938	9,416	3,524	589	4,809	70,357	58,067	4,973	7,317
District 10	118,865	93,693	13,390	4,590	767	6,425	94,276	75,938	9,416	3,524	589	4,809	70,357	58,067	4,973	7,317
	100.000%	78.823%	11.265%	3.862%	0.645%	5.405%	100.000%	80.549%	9.988%	3.738%	0.625%	5.101%	74.629%	82.532%	7.068%	10.400%
District 11																
*St. Tammany	106,651	93,602	8,900	1,687	911	1,551	78,082	69,447	5,832	1,108	632	1,063	67,947	59,905	4,238	3,804
*Tangipahoa	15,019	12,834	1,791	73	135	186	11,234	9,816	1,145	55	96	122	8,750	7,781	683	286
District 11	121,670	106,436	10,691	1,760	1,046	1,737	89,316	79,263	6,977	1,163	728	1,185	76,697	67,686	4,921	4,090
	100.000%	87.479%	8.787%	1.447%	0.860%	1.428%	100.000%	88.744%	7.812%	1.302%	0.815%	1.327%	85.872%	88.251%	6.416%	5.333%
District 12																
*St. Tammany	25,104	23,102	1,368	168	199	267	19,303	17,931	930	112	143	187	15,908	14,596	637	675
*Tangipahoa	49,049	29,412	18,382	300	369	586	36,592	23,043	12,657	226	280	386	28,096	17,959	9,394	743
Washington	47,168	31,482	14,884	145	305	352	35,305	24,363	10,374	101	238	229	25,608	17,973	7,239	396
District 12	121,321	83,996	34,634	613	873	1,205	91,200	65,337	23,961	439	661	802	69,612	50,528	17,270	1,814
	100.000%	69.235%	28.547%	0.505%	0.720%	0.993%	100.000%	71.641%	26.273%	0.481%	0.725%	0.879%	76.329%	72.585%	24.809%	2.606%
District 13																

## Splits

	Total Population	Total White	Total Black	Total Asian	Total American Indian	Total Other	VAP Total	VAP White	VAP Black	VAP Asian	VAP American Indian	VAP Other	Reg Total Jan 2011	Reg White Jan 2011	Reg Black Jan 2011	Reg Other Jan 2011
District 13																
*East Baton Rouge	6,077	5,405	520	50	53	49	4,489	4,068	316	32	38	35	3,621	3,370	159	92
*Livingston	103,674	95,673	5,149	716	845	1,291	74,658	69,497	3,290	443	616	812	57,728	54,002	2,021	1,705
*Tangipahoa	9,207	8,688	304	98	55	62	6,920	6,579	194	63	43	41	6,107	5,802	126	179
District 13	118,958	109,766	5,973	864	953	1,402	86,067	80,144	3,800	538	697	888	67,456	63,174	2,306	1,976
	100.000%	92.273%	5.021%	0.726%	0.801%	1.179%	100.000%	93.118%	4.415%	0.625%	0.810%	1.032%	78.376%	93.652%	3.419%	2.929%
District 14																
*East Baton Rouge	115,785	33,912	75,627	4,112	424	1,710	89,056	29,898	53,956	3,442	356	1,404	59,935	15,455	41,867	2,613
District 14	115,785	33,912	75,627	4,112	424	1,710	89,056	29,898	53,956	3,442	356	1,404	59,935	15,455	41,867	2,613
	100.000%	29.289%	65.317%	3.551%	0.366%	1.477%	100.000%	33.572%	60.587%	3.865%	0.400%	1.577%	67.300%	25.786%	69.854%	4.360%
District 15																
*East Baton Rouge	119,974	26,522	87,971	2,787	433	2,261	86,573	22,327	60,285	2,023	334	1,604	65,246	17,838	45,101	2,307
District 15	119,974	26,522	87,971	2,787	433	2,261	86,573	22,327	60,285	2,023	334	1,604	65,246	17,838	45,101	2,307
	100.000%	22.106%	73.325%	2.323%	0.361%	1.885%	100.000%	25.790%	69.635%	2.337%	0.386%	1.853%	75.365%	27.340%	69.125%	3.536%
District 16																
*East Baton Rouge	118,106	89,139	21,736	4,739	504	1,988	95,832	74,590	15,726	3,649	402	1,465	71,600	59,313	8,545	3,742
District 16	118,106	89,139	21,736	4,739	504	1,988	95,832	74,590	15,726	3,649	402	1,465	71,600	59,313	8,545	3,742
	100.000%	75.474%	18.404%	4.012%	0.427%	1.683%	100.000%	77.834%	16.410%	3.808%	0.419%	1.529%	74.714%	82.839%	11.934%	5.226%
District 17																
*Assumption	11,024	10,086	591	46	143	158	8,411	7,809	370	35	97	100	6,729	6,414	240	75
*East Baton Rouge	13,758	8,817	4,699	101	69	72	9,961	6,520	3,290	67	42	42	9,042	5,895	2,908	239
East Feliciana	20,267	10,783	9,250	67	127	40	16,075	8,775	7,123	58	94	25	13,411	7,629	5,126	656
*Iberville	22,949	12,219	10,354	91	97	188	17,151	9,690	7,171	60	80	150	15,599	8,514	6,888	197
Pointe Coupee	22,802	14,010	8,427	69	71	225	17,327	11,073	6,020	44	57	133	15,464	9,584	5,696	184
*St. Helena	7,233	3,534	3,604	12	45	38	5,528	2,859	2,599	7	38	25	5,588	2,748	2,781	59
*St. Martin	1,443	1,399	10	8	21	5	1,163	1,135	4	6	15	3	993	976	0	17
*West Baton Rouge	9,824	6,855	2,832	28	30	79	7,556	5,369	2,087	22	28	50	5,976	4,382	1,520	74
*West Feliciana	1,741	1,249	465	4	9	14	1,304	924	360	1	8	11	1,263	850	392	21
District 17	111,041	68,952	40,232	426	612	819	84,476	54,154	29,024	300	459	539	74,065	46,992	25,551	1,522
	100.000%	62.096%	36.232%	0.384%	0.551%	0.738%	100.000%	64.106%	34.358%	0.355%	0.543%	0.638%	87.676%	63.447%	34.498%	2.055%
District 18																
*Ascension	87,815	72,447	11,747	1,128	523	1,970	62,436	52,411	7,691	733	365	1,236	52,297	44,306	5,673	2,318
*Livingston	22,583	20,372	1,608	185	190	228	16,741	15,206	1,116	119	155	145	12,701	11,467	883	351
*St. James	5,040	3,556	1,439	15	10	20	3,644	2,600	1,018	5	8	13	2,988	2,264	684	40
District 18	115,438	96,375	14,794	1,328	723	2,218	82,821	70,217	9,825	857	528	1,394	67,986	58,037	7,240	2,709
	100.000%	83.486%	12.816%	1.150%	0.626%	1.921%	100.000%	84.782%	11.863%	1.035%	0.638%	1.683%	82.088%	85.366%	10.649%	3.985%
District 19																

## Splits

	Total Population	Total White	Total Black	Total Asian	Total American Indian	Total Other	VAP Total	VAP White	VAP Black	VAP Asian	VAP American Indian	VAP Other	Reg Total Jan 2011	Reg White Jan 2011	Reg Black Jan 2011	Reg Other Jan 2011
District 19																
*Jefferson	17,715	4,260	11,548	99	110	1,698	12,962	3,399	8,124	77	85	1,277	9,219	1,796	6,753	670
*Lafourche	17,053	13,077	3,392	79	249	256	12,981	10,282	2,297	58	159	185	9,867	7,963	1,658	246
*St. Charles	51,478	36,388	13,247	574	370	899	37,528	27,294	8,977	356	262	639	31,142	22,894	6,918	1,330
*St. John the Baptist	25,050	12,996	10,911	333	158	652	18,217	10,139	7,272	242	101	463	14,668	8,449	5,441	778
District 19	111,296	66,721	39,098	1,085	887	3,505	81,688	51,114	26,670	733	607	2,564	64,896	41,102	20,770	3,024
	100.000%	59.949%	35.130%	0.975%	0.797%	3.149%	100.000%	62.572%	32.649%	0.897%	0.743%	3.139%	79.444%	63.335%	32.005%	4.660%
District 20																
*Lafourche	48,130	40,663	2,347	499	2,925	1,696	36,024	31,090	1,542	346	1,836	1,210	25,142	23,435	784	923
*Terrebonne	68,112	45,651	13,862	720	6,090	1,789	50,435	35,467	9,215	534	3,936	1,283	35,813	26,312	6,807	2,694
District 20	116,242	86,314	16,209	1,219	9,015	3,485	86,459	66,557	10,757	880	5,772	2,493	60,955	49,747	7,591	3,617
	100.000%	74.254%	13.944%	1.049%	7.755%	2.998%	100.000%	76.981%	12.442%	1.018%	6.676%	2.883%	70.502%	81.613%	12.453%	5.934%
District 21																
*Iberia	8,289	3,164	4,980	47	26	72	5,852	2,474	3,279	28	21	50	5,436	2,231	3,122	83
*Lafourche	15,298	13,190	1,752	136	138	82	11,715	10,278	1,189	104	96	48	9,741	8,618	934	189
St. Mary	54,650	32,406	18,290	1,058	1,269	1,627	40,746	25,191	12,797	773	837	1,148	31,845	20,072	10,527	1,246
*Terrebonne	43,748	32,940	8,210	613	1,285	700	32,302	25,154	5,432	452	789	475	23,486	19,025	3,461	1,000
District 21	121,985	81,700	33,232	1,854	2,718	2,481	90,615	63,097	22,697	1,357	1,743	1,721	70,508	49,946	18,044	2,518
	100.000%	66.975%	27.243%	1.520%	2.228%	2.034%	100.000%	69.632%	25.048%	1.498%	1.924%	1.899%	77.811%	70.837%	25.591%	3.571%
District 22																
*Iberia	64,951	42,387	19,111	1,879	402	1,172	47,546	32,663	12,475	1,280	286	842	39,703	27,785	10,795	1,123
*Lafayette	3,476	2,383	972	30	23	68	2,569	1,821	658	21	16	53	2,144	1,500	573	71
*St. Landry	7,310	6,924	310	16	33	27	5,380	5,121	217	10	21	11	5,128	4,791	242	95
*St. Martin	46,038	31,417	13,327	458	312	524	33,878	23,976	9,032	304	202	364	30,147	20,979	8,195	973
District 22	121,775	83,111	33,720	2,383	770	1,791	89,373	63,581	22,382	1,615	525	1,270	77,122	55,055	19,805	2,262
	100.000%	68.250%	27.690%	1.957%	0.632%	1.471%	100.000%	71.141%	25.043%	1.807%	0.587%	1.421%	86.292%	71.387%	25.680%	2.933%
District 23																
*Lafayette	120,896	100,058	14,929	3,137	765	2,007	93,891	78,795	10,733	2,362	561	1,440	72,241	63,077	5,836	3,328
District 23	120,896	100,058	14,929	3,137	765	2,007	93,891	78,795	10,733	2,362	561	1,440	72,241	63,077	5,836	3,328
	100.000%	82.764%	12.349%	2.595%	0.633%	1.660%	100.000%	83.922%	11.431%	2.516%	0.598%	1.534%	76.941%	87.315%	8.079%	4.607%
District 24																
*Lafayette	62,458	25,004	35,897	362	324	871	45,579	20,117	24,351	253	236	622	37,853	15,901	20,648	1,304
*St. Landry	54,031	23,374	29,624	265	249	519	39,072	18,107	20,250	175	170	370	37,534	16,691	20,184	659
*St. Martin	4,679	1,497	3,060	12	17	93	3,348	1,209	2,054	6	10	69	2,709	911	1,691	107
District 24	121,168	49,875	68,581	639	590	1,483	87,999	39,433	46,655	434	416	1,061	78,096	33,503	42,523	2,070
	100.000%	41.162%	56.600%	0.527%	0.487%	1.224%	100.000%	44.811%	53.018%	0.493%	0.473%	1.206%	88.746%	42.900%	54.450%	2.651%

## Splits

	Total Population	Total White	Total Black	Total Asian	Total American Indian	Total Other	VAP Total	VAP White	VAP Black	VAP Asian	VAP American Indian	VAP Other	Reg Total Jan 2011	Reg White Jan 2011	Reg Black Jan 2011	Reg Other Jan 2011
District 25																
*Acadia	33,069	26,859	5,678	120	181	231	24,013	19,879	3,768	82	122	162	20,049	16,624	3,191	234
*Calcasieu	48,742	39,988	6,581	1,199	402	572	36,478	30,692	4,290	836	293	367	29,649	25,210	3,356	1,083
Cameron	6,839	6,546	135	10	60	88	5,183	5,011	74	9	38	51	5,536	5,272	188	76
Jefferson Davis	31,594	25,125	5,836	98	275	260	23,196	18,871	3,891	66	180	188	19,337	15,808	3,132	397
District 25	120,244	98,518	18,230	1,427	918	1,151	88,870	74,453	12,023	993	633	768	74,571	62,914	9,867	1,790
	100.000%	81.932%	15.161%	1.187%	0.763%	0.957%	100.000%	83.777%	13.529%	1.117%	0.712%	0.864%	83.910%	84.368%	13.232%	2.400%
District 26																
*Acadia	22,687	16,659	5,697	48	112	171	16,523	12,586	3,709	32	77	119	13,701	10,382	3,129	190
*Lafayette	34,748	26,261	7,114	362	178	833	25,276	19,833	4,461	248	138	596	18,886	15,154	3,098	634
*St. Landry	5,822	4,776	906	31	38	71	4,338	3,618	642	19	20	39	3,197	2,700	412	85
Vermilion	57,999	46,922	8,654	1,274	376	773	42,522	35,424	5,457	902	259	480	34,753	29,351	4,628	774
District 26	121,256	94,618	22,371	1,715	704	1,848	88,659	71,461	14,269	1,201	494	1,234	70,537	57,587	11,267	1,683
	100.000%	78.032%	18.449%	1.414%	0.581%	1.524%	100.000%	80.602%	16.094%	1.355%	0.557%	1.392%	79.560%	81.641%	15.973%	2.386%
District 27																
*Calcasieu	118,161	73,635	40,862	1,261	899	1,504	88,182	57,239	28,285	943	683	1,032	72,724	46,996	23,361	2,367
District 27	118,161	73,635	40,862	1,261	899	1,504	88,182	57,239	28,285	943	683	1,032	72,724	46,996	23,361	2,367
	100.000%	62.318%	34.582%	1.067%	0.761%	1.273%	100.000%	64.910%	32.076%	1.069%	0.775%	1.170%	82.470%	64.622%	32.123%	3.255%
District 28																
*Acadia	6,017	5,609	270	28	20	90	4,374	4,089	191	17	14	63	3,506	3,340	121	45
Allen	25,764	18,435	6,192	220	749	168	19,870	14,288	4,828	154	495	105	13,110	10,190	2,397	523
*Avoyelles	37,746	24,038	12,759	159	605	185	28,561	18,740	9,173	114	403	131	20,547	14,386	5,738	423
Evangeline	33,984	23,439	9,862	139	161	383	24,817	17,619	6,661	97	117	323	21,407	15,267	5,973	167
*St. Landry	16,221	11,541	4,313	83	86	198	11,914	8,747	2,888	62	67	150	10,690	7,719	2,753	218
District 28	119,732	83,062	33,396	629	1,621	1,024	89,536	63,483	23,741	444	1,096	772	69,260	50,902	16,982	1,376
	100.000%	69.373%	27.892%	0.525%	1.354%	0.855%	100.000%	70.902%	26.516%	0.496%	1.224%	0.862%	77.354%	73.494%	24.519%	1.987%
District 29																
*Bienville	6,455	2,560	3,775	22	45	53	4,991	2,115	2,792	13	36	35	4,232	1,673	2,536	23
*Grant	6,086	4,296	1,655	28	93	14	4,433	3,187	1,149	19	67	11	3,869	2,685	1,090	94
*Jackson	6,138	3,142	2,932	11	25	28	4,826	2,549	2,232	9	20	16	3,353	1,770	1,536	47
*Lincoln	19,530	4,405	14,396	354	60	315	15,356	3,719	11,019	331	50	237	9,028	2,040	6,607	381
*Natchitoches	11,281	2,752	8,280	60	76	113	8,010	2,262	5,550	54	59	85	5,774	1,423	4,149	202
*Rapides	62,551	25,163	35,446	777	572	593	45,795	20,337	24,024	585	440	409	35,738	15,823	18,805	1,110
*Winn	6,118	3,180	2,818	15	60	45	4,427	2,437	1,906	11	44	29	3,985	2,103	1,847	35
District 29	118,159	45,498	69,302	1,267	931	1,161	87,838	36,606	48,672	1,022	716	822	65,979	27,517	36,570	1,892
	100.000%	38.506%	58.651%	1.072%	0.788%	0.983%	100.000%	41.674%	55.411%	1.164%	0.815%	0.936%	75.114%	41.706%	55.427%	2.868%
District 30																

## Splits

	Total Population	Total White	Total Black	Total Asian	Total American Indian	Total Other	VAP Total	VAP White	VAP Black	VAP Asian	VAP American Indian	VAP Other	Reg Total Jan 2011	Reg White Jan 2011	Reg Black Jan 2011	Reg Other Jan 2011
District 30																
Beauregard	35,654	29,321	5,016	353	652	312	26,359	21,902	3,569	239	460	189	19,924	16,703	2,304	917
*Calcasieu	25,865	22,891	2,382	90	325	177	19,096	17,146	1,564	67	211	108	15,471	13,815	1,258	398
Vernon	52,334	39,614	8,313	1,426	1,177	1,804	37,822	29,416	5,349	1,026	848	1,183	21,620	17,881	2,495	1,244
District 30	113,853	91,826	15,711	1,869	2,154	2,293	83,277	68,464	10,482	1,332	1,519	1,480	57,015	48,399	6,057	2,559
	100.000%	80.653%	13.799%	1.642%	1.892%	2.014%	100.000%	82.212%	12.587%	1.599%	1.824%	1.777%	68.464%	84.888%	10.624%	4.488%
District 31																
*Grant	2,785	2,391	347	9	22	16	2,135	1,837	268	6	16	8	1,691	1,492	177	22
*Natchitoches	28,285	18,742	8,498	137	573	335	21,956	14,964	6,221	97	418	256	17,208	11,758	4,729	721
*Rapides	40,133	32,366	5,397	876	745	749	30,429	25,032	3,710	626	568	493	24,748	21,267	2,465	1,016
Red River	9,091	5,360	3,633	16	43	39	6,778	4,256	2,450	12	34	26	5,981	3,566	2,377	38
Sabine	24,233	17,155	4,234	84	2,636	124	18,311	13,544	2,835	63	1,796	73	13,837	10,811	2,032	994
*Winn	6,350	4,366	1,825	32	84	43	5,259	3,525	1,612	27	65	30	3,158	2,646	482	30
District 31	110,877	80,380	23,934	1,154	4,103	1,306	84,868	63,158	17,096	831	2,897	886	66,623	51,540	12,262	2,821
	100.000%	72.495%	21.586%	1.041%	3.700%	1.178%	100.000%	74.419%	20.144%	0.979%	3.414%	1.044%	78.502%	77.361%	18.405%	4.234%
District 32																
*Avoyelles	4,327	4,150	117	15	36	9	3,229	3,110	74	12	28	5	2,558	2,488	52	18
Caldwell	10,132	8,213	1,778	30	64	47	7,758	6,314	1,336	23	51	34	6,324	5,351	911	62
Catahoula	10,407	6,985	3,318	9	53	42	8,057	5,543	2,438	8	43	25	6,380	4,749	1,596	35
*Concordia	13,657	9,767	3,704	39	88	59	10,431	7,417	2,884	25	69	36	8,220	6,290	1,818	111
Franklin	20,767	13,930	6,620	65	82	70	15,450	10,838	4,471	42	63	36	13,466	9,408	3,978	80
La Salle	14,890	12,689	1,808	40	215	138	11,366	9,677	1,402	35	143	109	8,427	7,648	621	158
*Ouachita	6,099	5,460	570	11	46	12	4,590	4,174	372	4	32	8	4,213	3,724	360	129
*Rapides	17,375	16,029	912	147	216	71	12,643	11,777	584	91	152	39	10,954	10,257	410	287
*Richland	710	661	39	8	2	0	555	522	27	4	2	0	437	407	25	5
*West Feliciana	13,884	6,876	6,852	38	26	92	11,603	5,488	6,004	23	25	63	5,533	3,598	1,862	73
District 32	112,248	84,760	25,718	402	828	540	85,682	64,860	19,592	267	608	355	66,512	53,920	11,633	958
	100.000%	75.511%	22.912%	0.358%	0.738%	0.481%	100.000%	75.699%	22.866%	0.312%	0.710%	0.414%	77.627%	81.068%	17.490%	1.440%
District 33																
*Claiborne	13,340	5,516	7,663	53	74	34	10,787	4,654	6,018	30	64	21	6,409	3,093	3,243	73
*Lincoln	4,930	4,166	682	18	21	43	3,769	3,213	501	10	18	27	3,128	2,671	382	75
*Morehouse	18,789	12,169	6,365	105	74	76	14,322	9,781	4,365	71	58	47	12,679	8,517	3,959	203
*Ouachita	42,027	31,780	9,092	653	182	320	31,228	24,495	5,949	444	133	207	26,441	21,463	3,988	990
Union	22,721	15,682	6,242	49	115	633	17,493	12,568	4,439	31	91	364	14,964	10,863	3,709	392
West Carroll	11,604	9,497	1,870	34	86	117	8,746	7,254	1,330	24	62	76	7,167	6,017	1,096	54
District 33	113,411	78,810	31,914	912	552	1,223	86,345	61,965	22,602	610	426	742	70,788	52,624	16,377	1,787
	100.000%	69.491%	28.140%	0.804%	0.487%	1.078%	100.000%	71.764%	26.176%	0.706%	0.493%	0.859%	81.983%	74.340%	23.135%	2.524%

## Splits

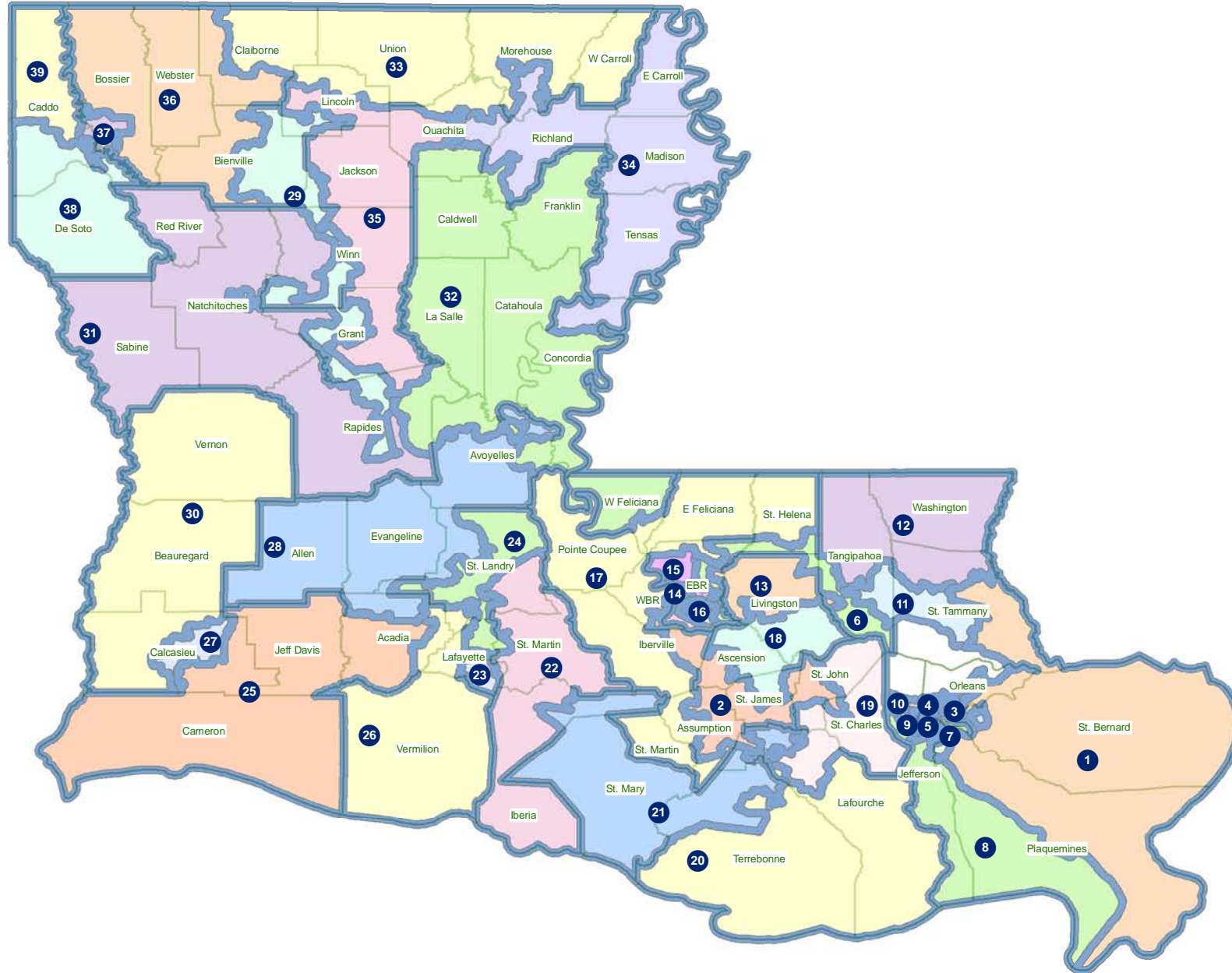
	Total Population	Total White	Total Black	Total Asian	Total American Indian	Total Other	VAP Total	VAP White	VAP Black	VAP Asian	VAP American Indian	VAP Other	Reg Total Jan 2011	Reg White Jan 2011	Reg Black Jan 2011	Reg Other Jan 2011
District 34																
*Concordia	7,165	2,192	4,900	20	35	18	5,158	1,881	3,233	16	19	9	4,476	1,707	2,711	59
East Carroll	7,759	2,245	5,398	47	31	38	5,766	1,845	3,830	37	25	29	5,330	1,617	3,664	49
Madison	12,093	4,498	7,452	33	55	55	9,071	3,644	5,312	20	45	50	7,634	2,780	4,764	90
*Morehouse	9,190	2,176	6,916	37	28	33	6,739	1,802	4,865	31	21	20	6,002	1,531	4,370	101
*Ouachita	53,240	10,092	42,269	396	152	331	37,935	8,763	28,480	339	118	235	30,941	5,542	24,174	1,225
*Richland	20,015	12,218	7,505	84	94	114	14,885	9,477	5,210	61	68	69	12,502	7,766	4,621	115
Tensas	5,252	2,202	2,991	13	15	31	3,923	1,796	2,085	11	9	22	4,131	1,807	2,304	20
District 34	114,714	35,623	77,431	630	410	620	83,477	29,208	53,015	515	305	434	71,016	22,750	46,608	1,659
	100.000%	31.054%	67.499%	0.549%	0.357%	0.540%	100.000%	34.989%	63.509%	0.617%	0.365%	0.520%	85.073%	32.035%	65.630%	2.336%
District 35																
*Grant	13,438	11,462	1,600	60	270	46	10,590	8,764	1,561	42	191	32	6,340	6,184	17	139
*Jackson	10,136	7,942	2,015	56	58	65	7,744	6,132	1,492	30	45	45	6,493	5,109	1,269	115
*Lincoln	22,275	17,204	4,106	502	149	314	18,005	13,943	3,301	408	115	238	11,860	9,893	1,530	437
*Ouachita	52,354	45,552	5,263	662	325	552	39,594	34,884	3,604	461	266	379	32,813	29,216	2,475	1,122
*Rapides	11,554	9,815	1,395	112	149	83	8,732	7,433	1,050	75	110	64	6,616	5,981	427	208
*Winn	2,845	2,677	134	6	23	5	2,185	2,056	101	6	20	2	1,749	1,661	77	11
District 35	112,602	94,652	14,513	1,398	974	1,065	86,850	73,212	11,109	1,022	747	760	65,871	58,044	5,795	2,032
	100.000%	84.059%	12.889%	1.242%	0.865%	0.946%	100.000%	84.297%	12.791%	1.177%	0.860%	0.875%	75.845%	88.118%	8.797%	3.085%
District 36																
*Bienville	7,898	5,375	2,378	22	87	36	6,021	4,164	1,752	18	69	18	5,024	3,439	1,549	36
*Bossier	58,064	46,651	9,252	806	578	777	42,974	34,811	6,712	551	425	475	33,320	27,159	4,964	1,197
*Claiborne	3,855	2,651	1,157	9	25	13	3,028	2,127	871	7	16	7	2,468	1,815	629	24
Webster	41,207	26,469	14,044	180	316	198	31,497	20,907	10,110	120	241	119	23,913	16,115	7,416	382
District 36	111,024	81,146	26,831	1,017	1,006	1,024	83,520	62,009	19,445	696	751	619	64,725	48,528	14,558	1,639
	100.000%	73.089%	24.167%	0.916%	0.906%	0.922%	100.000%	74.244%	23.282%	0.833%	0.899%	0.741%	77.496%	74.976%	22.492%	2.532%
District 37																
*Bossier	58,915	37,779	16,354	1,710	561	2,511	43,971	29,881	10,701	1,285	412	1,692	27,514	19,504	6,527	1,483
*Caddo	51,855	38,321	10,961	1,286	438	849	40,947	31,319	7,731	951	344	602	31,926	25,386	5,155	1,385
District 37	110,770	76,100	27,315	2,996	999	3,360	84,918	61,200	18,432	2,236	756	2,294	59,440	44,890	11,682	2,868
	100.000%	68.701%	24.659%	2.705%	0.902%	3.033%	100.000%	72.070%	21.706%	2.633%	0.890%	2.701%	69.997%	75.522%	19.653%	4.825%
District 38																
*Caddo	85,150	52,471	29,425	1,450	798	1,006	64,993	41,937	20,730	1,029	605	692	51,140	33,620	15,526	1,994
De Soto	26,656	15,456	10,600	54	331	215	20,006	12,055	7,495	42	273	141	16,396	9,663	6,191	542
District 38	111,806	67,927	40,025	1,504	1,129	1,221	84,999	53,992	28,225	1,071	878	833	67,536	43,283	21,717	2,536
	100.000%	60.754%	35.799%	1.345%	1.010%	1.092%	100.000%	63.521%	33.206%	1.260%	1.033%	0.980%	79.455%	64.089%	32.156%	3.755%
District 39																

# Splits

	Total Population	Total White	Total Black	Total Asian	Total American Indian	Total Other	VAP Total	VAP White	VAP Black	VAP Asian	VAP American Indian	VAP Other	Reg Total Jan 2011	Reg White Jan 2011	Reg Black Jan 2011	Reg Other Jan 2011
District 39																
*Caddo	117,964	34,150	81,843	494	670	807	86,375	27,492	57,441	383	506	553	68,308	20,157	46,027	2,124
District 39	117,964	34,150	81,843	494	670	807	86,375	27,492	57,441	383	506	553	68,308	20,157	46,027	2,124
	100.000%	28.950%	69.380%	0.419%	0.568%	0.684%	100.000%	31.829%	66.502%	0.443%	0.586%	0.640%	79.083%	29.509%	67.382%	3.109%



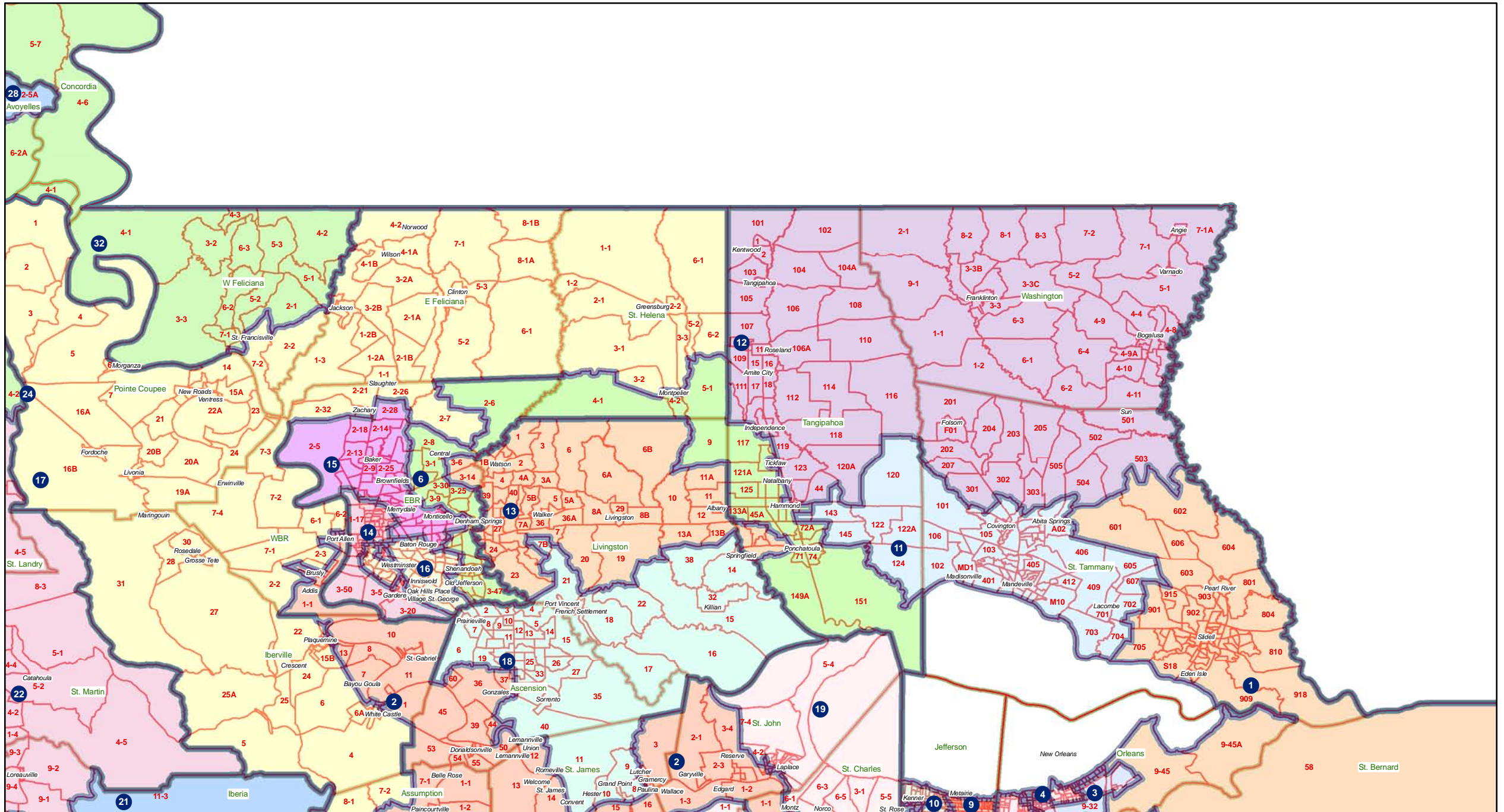
# Senate - Statewide







# Senate - Florida Parishes





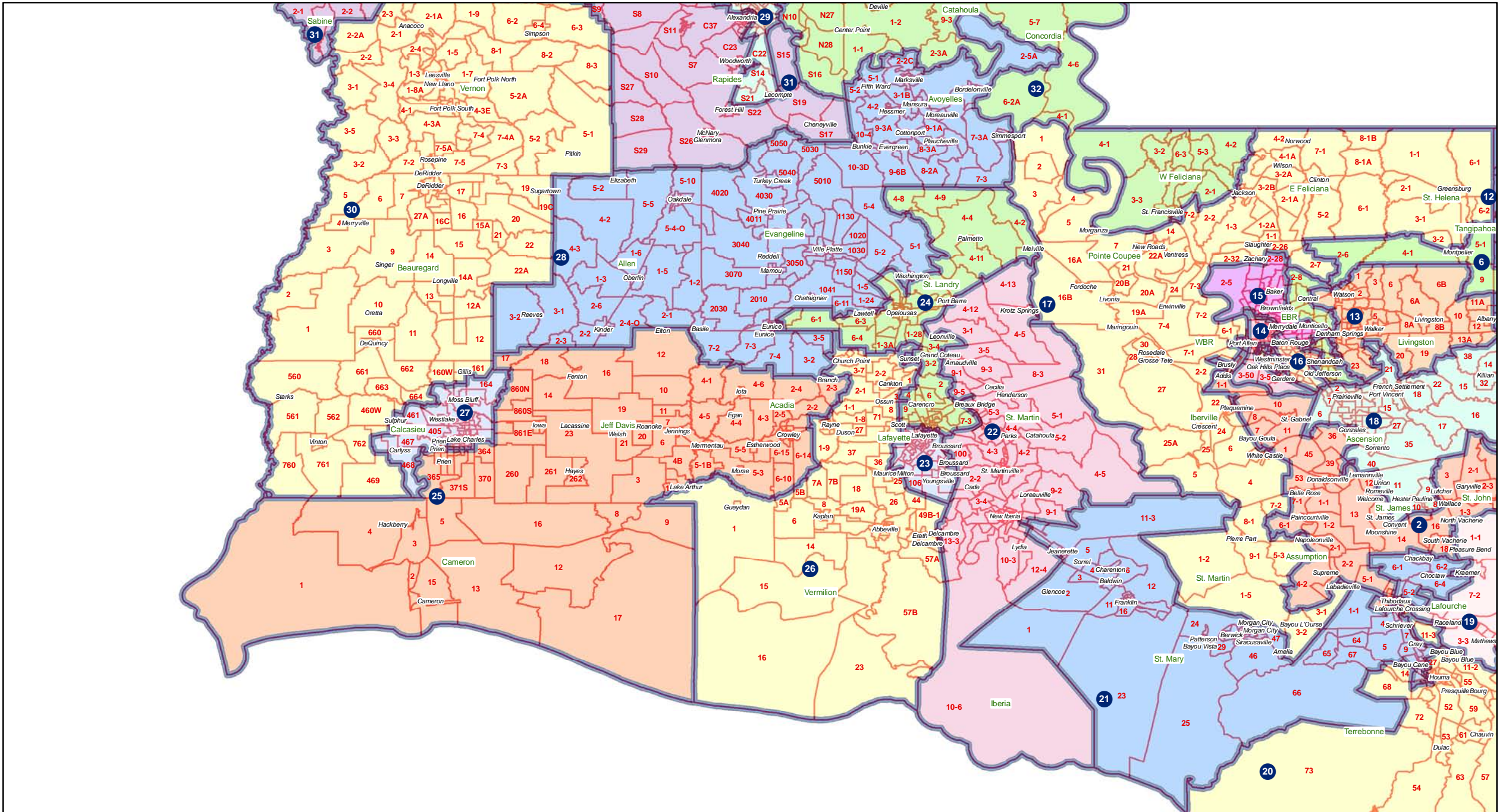








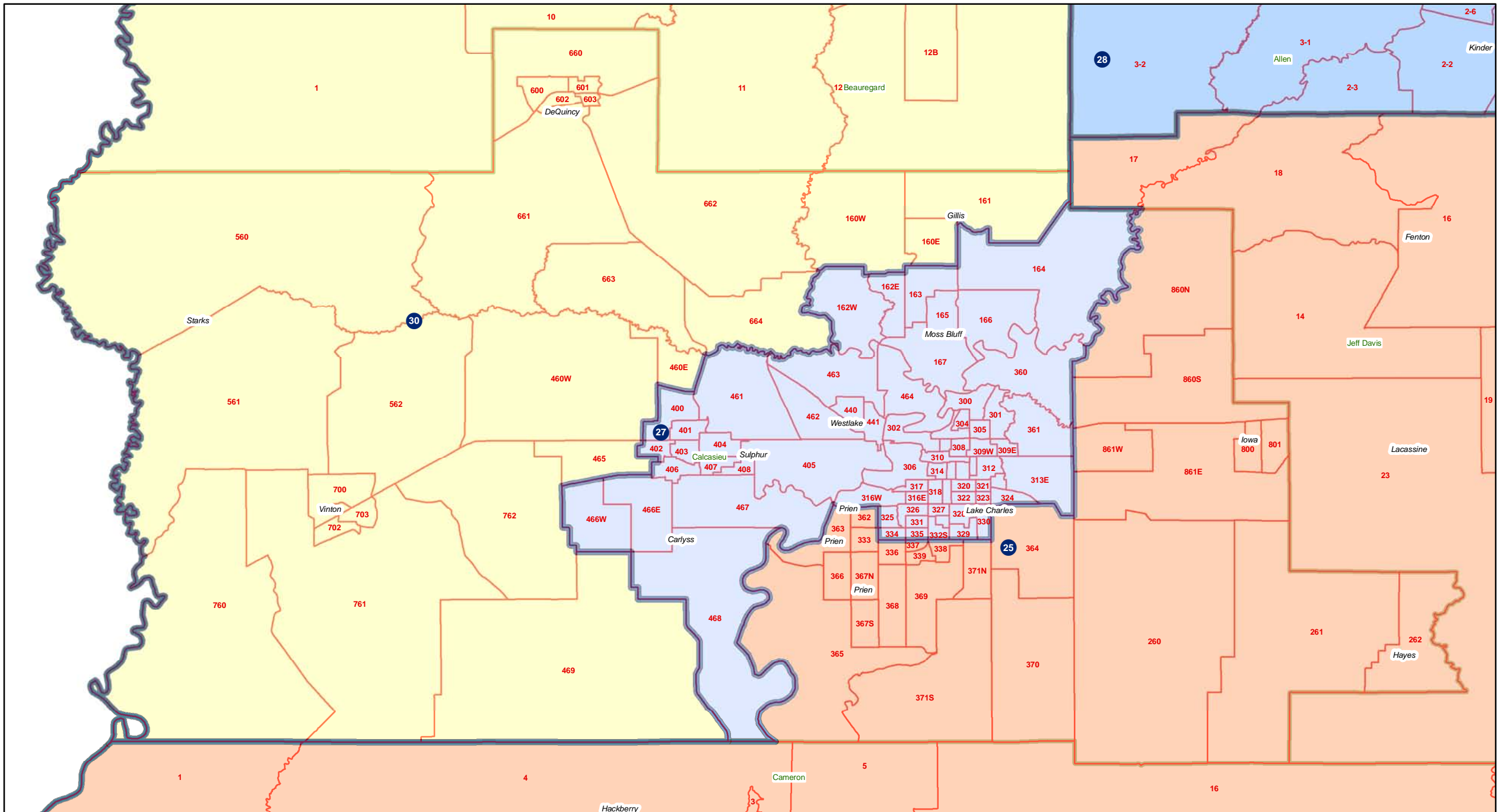
# Senate - Southwest





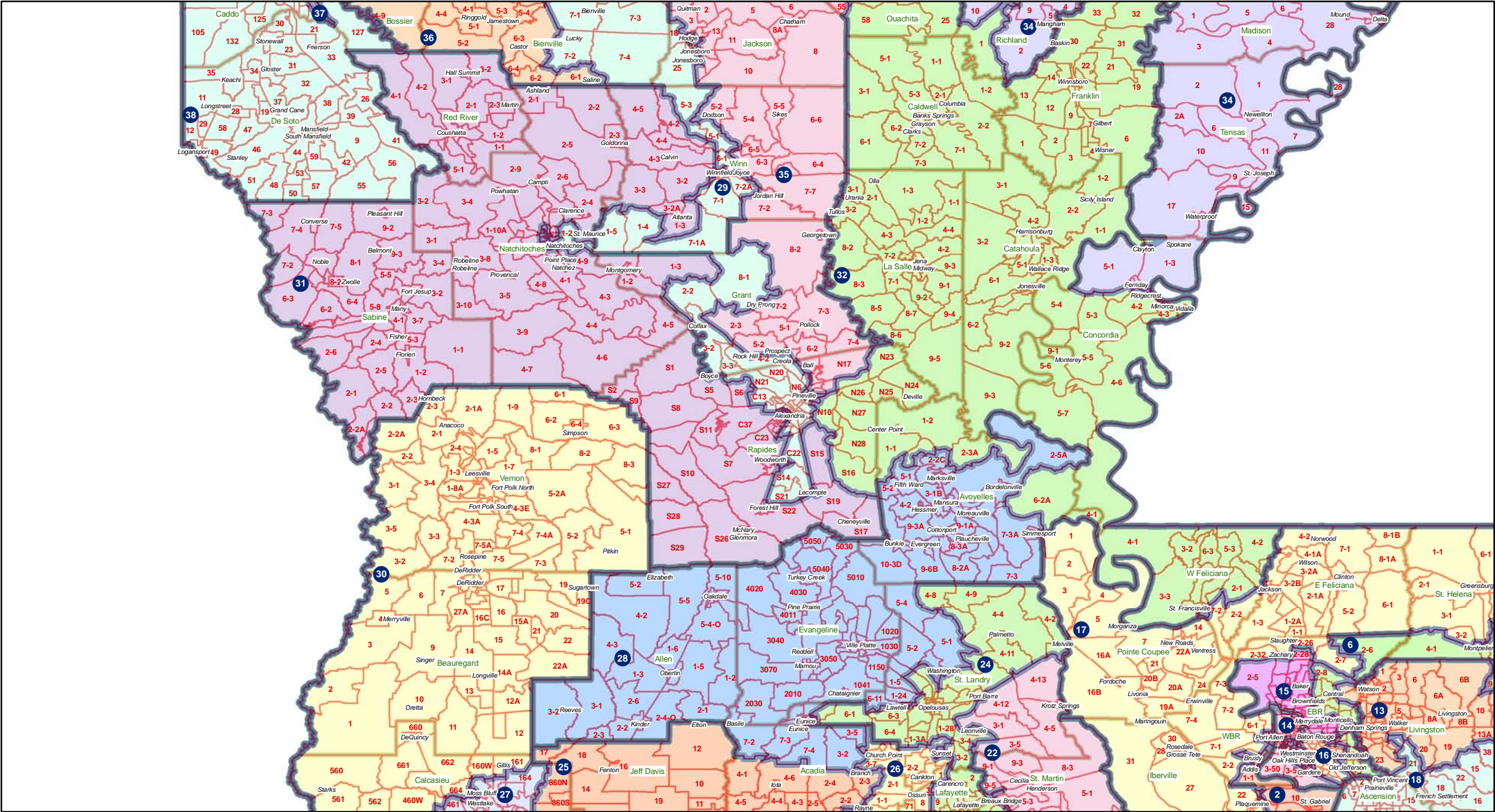


# Senate - Calcasieu



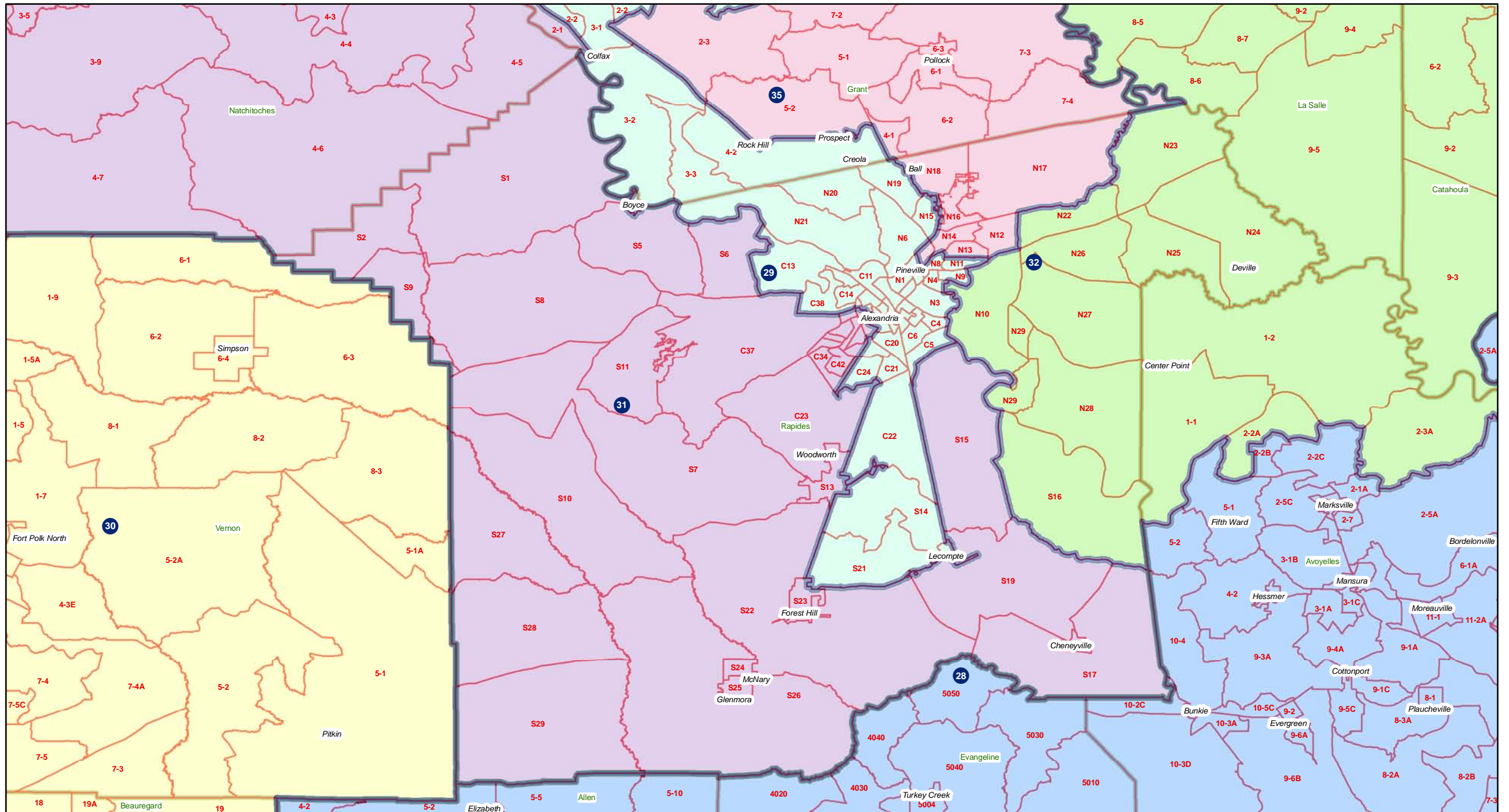


# Senate - Central



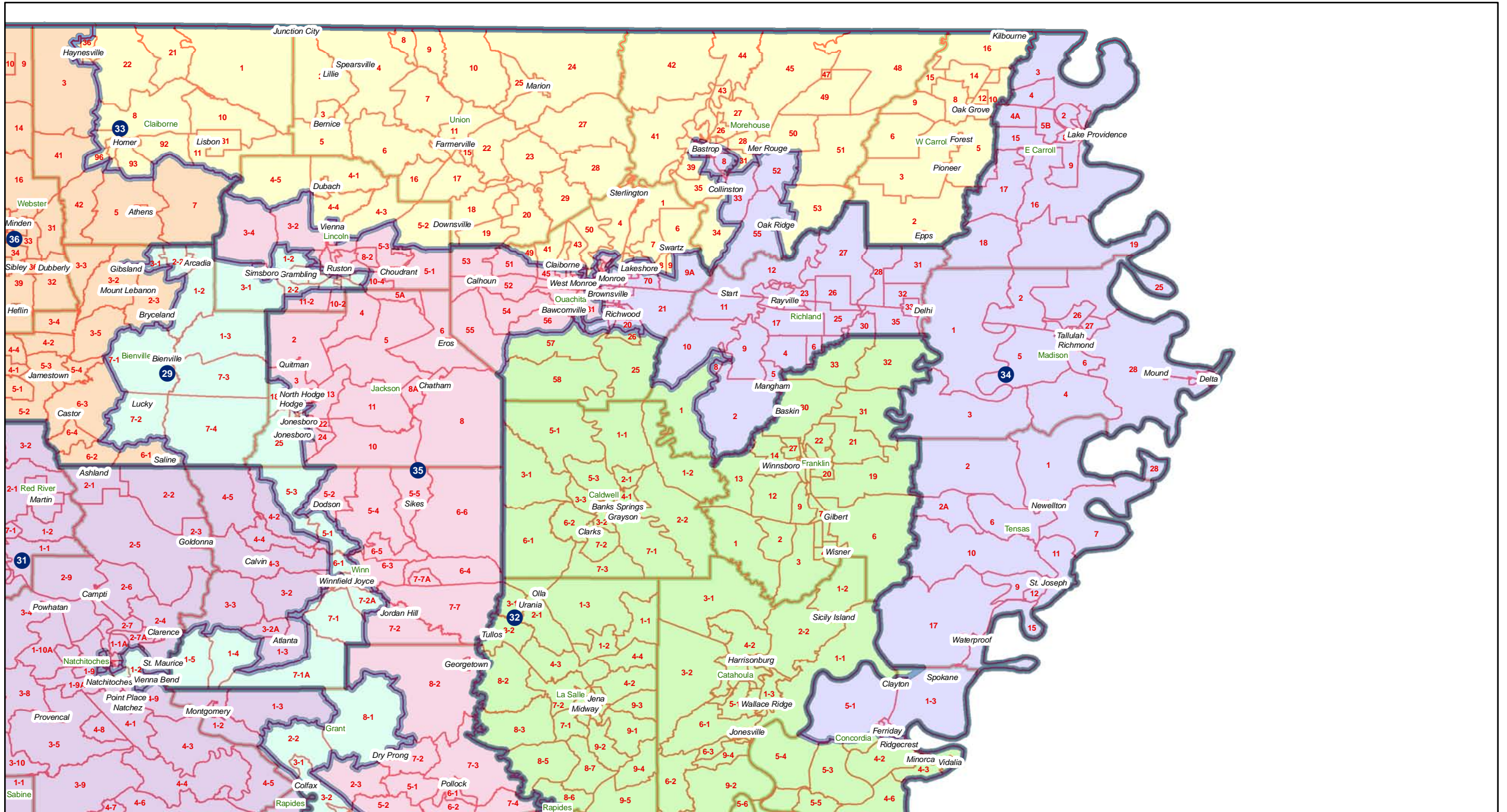


# Senate - Rapides



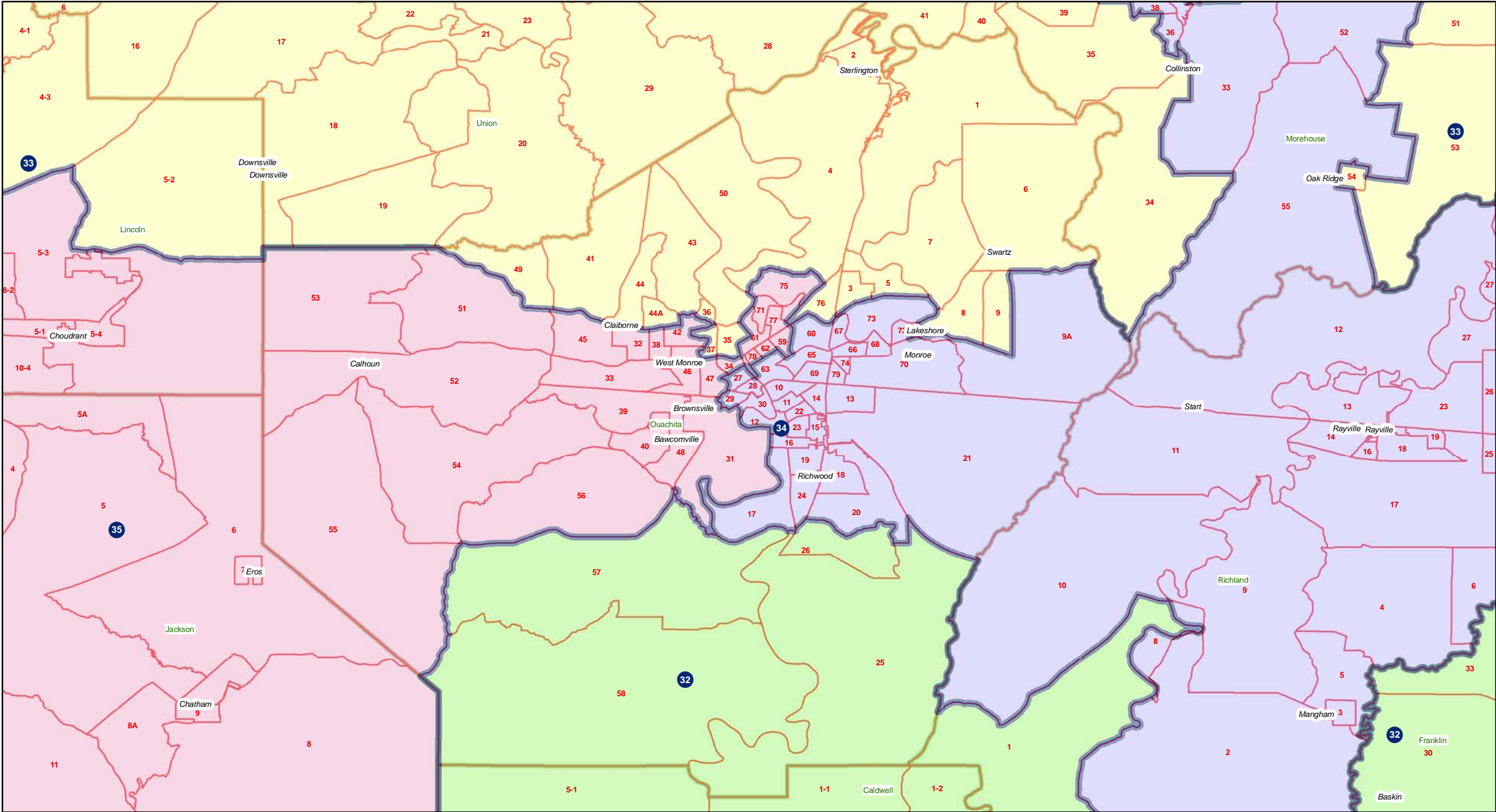


# Senate - Northeast





# Senate - Ouachita









# Senate - Shreveport

