
SENATE FLOOR AMENDMENTS

Amendments proposed by Senator Chabert to Reengrossed House Bill No. 6 by Representative Ponti

1 AMENDMENT NO. 1

2 Delete Senate Floor Amendments SFAHB6MORAINS417 proposed by Senator Riser and
3 adopted by the Senate on April 13, 2011

4 AMENDMENT NO. 2

5 On page 1, delete lines 13 through 19 and delete pages 2 through 5, and on page 6, delete
6 lines 1 through 8 and insert the following:

7 “(1) District 1 is composed of Precincts 1, 2, 3, 4, 5, 7, 8, 9, 10, 11, 12, 13, 14, 15,
8 16, 17, 18, 19, 20, 21, 22, 23, 24, 25, 26, 27, 28, 29, 30, 31, 32, 33, 34, 35, 36, 37, 38, 39, 40,
9 41, 42, 43, 44, 45, 46, 51, 52, 53, 54, 55, 56, 58, 59, 60, 61, 62, 63, 64, 65, 66, 67, 68, 69, 70,
10 71, 72, 73, 74, 75, 76, 77, 78, 79, 80, 81, 82, 83, 84, 85, 86, 87, 88, 89, 90, 91, 92, 93, 94, 95,
11 96, 97, 98, 99, 100, 101, 102, 103, 105, 106, 117, 118, 119, 120, 121, 122, 123, 124, 125,
12 126, 127, 128, 129, 130, 132, 134, 136, 192, 198, 199, 246, 247, 248, 1-GI, 1-H, 2-H, 3-H,
13 4-H, 5-H, 6-H, 7-H, 8-H, 9-H, 1-K, 2-K, 3-K, 4-K, 5-K, 11-K, 12-K, 18-K, 19-K, 20-K,
14 25-K, 27-K, 28-K and 1-L of Jefferson Parish; Precincts 3-2, 3-3, 3-4, 3-5, 3-6, 4-1, 4-2, 4-3,
15 4-4, 4-5, 4-6, 8-1, 9-1, 9-2, 10-1, 10-2, 10-3, 10-4, 10-5, 10-6, 10-7, 10-8, 10-9, 10-10,
16 10-11, 10-12, 10-13, 10-14, 10-15, 10-16, 11-1 and 11-2 of Lafourche Parish; Precincts 3-20,
17 4-7, 4-8, 4-9, 4-11, 4-14, 4-15, 4-17, 4-17A, 4-18, 4-20, 4-21, 4-22, 4-23, 5-15, 5-16, 5-17,
18 5-18, 7-41, 7-42, 14-2, 14-3, 14-4, 14-5, 14-6, 14-7, 14-8, 14-9, 14-10, 14-11, 14-12,
19 14-13A, 14-14, 14-15, 14-16, 14-18A, 14-19, 14-21, 16-2, 16-3, 17-1, 17-17, 17-18, 17-18A,
20 17-19 and 17-20 of Orleans Parish; Plaquemines Parish; St. Bernard Parish; St. Tammany
21 Parish; Precincts 42A, 45, 45A, 46, 47, 48, 49, 70, 70A, 71, 72, 72A, 73, 74, 122, 122A, 124,
22 133A, 137, 137A, 137B, 137C, 137D, 139, 141, 141A, 143, 145, 149, 149A and 151 of
23 Tangipahoa Parish and Terrebonne Parish.

24 (2) District 2 is composed of Precincts 30, 36, 37, 39, 42, 44, 45, 47, 48, 49, 50, 51,
25 52, 53, 54, 55, 56, 57 and 60 of Ascension Parish; Precincts 1-1, 1-2, 2-2, 6-1, 6-2 and 7-1
26 of Assumption Parish; Precincts 1-2, 1-3, 1-4, 1-5, 1-6, 1-10, 1-13, 1-14, 1-15, 1-16, 1-17,
27 1-18, 1-19, 1-21, 1-22, 1-23, 1-24, 1-25, 1-26, 1-27, 1-28, 1-29, 1-30, 1-31, 1-32, 1-36, 1-45,
28 1-50, 1-51, 1-58, 1-61, 1-62, 1-63, 1-67, 1-77, 1-84, 1-85, 1-86, 1-91, 1-92, 1-93, 1-94, 1-95,
29 1-100, 1-101, 1-104, 2-1, 2-9, 2-11, 2-13, 2-16, 2-20, 2-22, 2-23, 2-24 and 2-30 of East
30 Baton Rouge Parish; Precincts 1, 2, 3, 6, 7, 8, 10, 11, 12, 13A, 13B, 13C, 14, 14A, 14B, 15,
31 15A, 16, 17, 17A, 18, 19, 19A, 20, 21, 22 and 23 of Iberville Parish; Precincts 57, 104, 107,
32 108, 115, 116, 131, 133, 138, 150, 151, 152, 153, 154, 155, 156, 157A, 157B, 170, 171, 172,
33 173, 174, 175, 176, 177, 178, 179A, 179B, 180, 181, 182, 183, 184, 185A, 185B, 187, 188,
34 189, 190, 191, 193, 194A, 194B, 195, 196, 197A, 197B, 197C, 200, 201, 202, 203, 204, 205,
35 210, 211, 212A, 212B, 213A, 213B, 213C, 214A, 214B, 215, 216A, 216B, 217, 225, 226,
36 227, 228, 229, 230, 231, 232A, 232B, 234, 235, 236, 237, 238, 1-G, 2-G, 3-G, 4-G, 5-G,
37 6-G, 7-G, 8-G, 9-G, 10-G, 11-G, 12-G, 13-G, 13-KB, 15-K, 21-K, 22-K, 23-K, 24-K, 26-K,
38 29-K, 30-K, 31-K, 33-K, 1-W, 2-W, 3-W, 4-W, 5-W, 6-W and 7-W of Jefferson Parish;
39 Precincts 1-1, 1-2, 1-5, 1-6, 2-1, 2-2, 2-3, 2-4, 2-6, 2-6A, 2-7, 3-1, 3-3, 3-5, 3-8, 3-9, 3-12,
40 3-14, 3-15, 3-18, 3-19, 4-2, 4-3, 4-4, 4-5, 4-6, 5-1, 5-2, 5-3, 5-4, 5-5, 5-7, 5-8, 5-9, 5-10,
41 5-11, 5-12, 5-13, 6-1, 6-2, 6-4, 6-6, 6-7, 6-8, 6-9, 7-1, 7-2, 7-4, 7-5, 7-6, 7-7, 7-8, 7-9A, 7-10,
42 7-11, 7-12, 7-13, 7-14, 7-15, 7-16, 7-17, 7-18, 7-19, 7-20, 7-21, 7-23, 7-24, 7-25, 7-25A,
43 7-26, 7-27, 7-27B, 7-28, 7-28A, 7-29, 7-30, 7-32, 7-33, 7-34, 7-35, 7-37, 7-37A, 7-40, 8-1,
44 8-2, 8-4, 8-6, 8-7, 8-8, 8-9, 8-12, 8-13, 8-14, 8-15, 8-19, 8-20, 8-21, 8-22, 8-23, 8-24, 8-25,
45 8-26, 8-27, 8-28, 8-30, 9-1, 9-3, 9-3A, 9-4, 9-5, 9-5A, 9-6B, 9-6C, 9-6D, 9-6E, 9-6F, 9-7,
46 9-8, 9-8A, 9-9, 9-10, 9-11, 9-12, 9-13, 9-14, 9-15, 9-16, 9-17, 9-19, 9-21, 9-23, 9-25, 9-26,
47 9-28, 9-28C, 9-28E, 9-29, 9-30, 9-30A, 9-31, 9-31A, 9-31B, 9-31D, 9-32, 9-33, 9-34A, 9-35,
48 9-35A, 9-36, 9-36B, 9-37, 9-38, 9-38A, 9-39, 9-39B, 9-40, 9-40A, 9-40C, 9-41, 9-41A,
49 9-41B, 9-41C, 9-41D, 9-42, 9-42C, 9-43A, 9-43B, 9-43C, 9-43E, 9-43F, 9-43G, 9-43H,
50 9-43I, 9-43J, 9-43K, 9-43L, 9-43M, 9-43N, 9-44, 9-44A, 9-44B, 9-44D, 9-44E, 9-44F,

1 9-44G, 9-44I, 9-44J, 9-44L, 9-44M, 9-44N, 9-44O, 9-44P, 9-44Q, 9-45, 9-45A, 10-3, 10-6,
 2 10-7, 10-8, 10-9, 10-11, 10-12, 10-13, 10-14, 11-2, 11-3, 11-4, 11-5, 11-8, 11-9, 11-10,
 3 11-11, 11-12, 11-13, 11-14, 11-17, 12-1, 12-2, 12-3, 12-4, 12-5, 12-6, 12-7, 12-8, 12-9,
 4 12-10, 12-11, 12-12, 12-13, 12-14, 12-16, 12-17, 12-19, 13-1, 13-2, 13-3, 13-4, 13-5, 13-6,
 5 13-7, 13-8, 13-9, 13-10, 13-11, 13-12, 13-13, 13-14, 13-15, 13-16, 14-1, 14-17, 14-20,
 6 14-23, 14-24A, 14-25, 14-26, 15-1, 15-2, 15-3, 15-5, 15-6, 15-8, 15-9, 15-10, 15-11, 15-12,
 7 15-12A, 15-13, 15-13A, 15-13B, 15-14, 15-14A, 15-14B, 15-14C, 15-14D, 15-14E, 15-14F,
 8 15-14G, 15-15, 15-15A, 15-15B, 15-16, 15-17, 15-17A, 15-17B, 15-18, 15-18A, 15-18B,
 9 15-18C, 15-18D, 15-18E, 15-18F, 15-19, 15-19A, 15-19B, 15-19C, 16-1, 16-1A, 16-4, 16-5,
 10 16-6, 16-7, 16-8, 16-9, 17-2, 17-3, 17-4, 17-5, 17-6, 17-7, 17-8, 17-9, 17-10, 17-11, 17-12,
 11 17-13, 17-13A, 17-14, 17-15 and 17-16 of Orleans Parish; Precincts 1-1, 1-2, 1-3, 1-5, 2-1,
 12 2-2, 2-3, 2-4, 2-5, 3-5, 4-1, 4-2, 4-3, 4-4, 5-1, 5-4, 6-6, 6-7, 6-8, 7-1, 7-2, 7-3 and 7-4 of St.
 13 Charles Parish; St. James Parish; Precincts 1-1, 1-2, 1-3, 1-4, 1-5, 2-1, 2-2, 2-3, 2-4, 3-1, 3-2,
 14 3-3, 3-4, 4-1, 4-2, 4-3, 4-4, 4-9, 5-1, 5-2, 5-5, 6-1, 6-3, 6-4 and 7-7 of St. John the Baptist
 15 Parish and Precincts 1-1, 3-1A, 3-2, 4-2, 4-3A, 4-4, 4-5 and 5-1 of West Baton Rouge Parish.

16 (3) District 3 is composed of Acadia Parish; Calcasieu Parish; Cameron Parish;
 17 Iberia Parish; Jefferson Davis Parish; Lafayette Parish; Precincts 2-2, 2-6, 2-8 and 3-3 of St.
 18 Landry Parish; St. Martin Parish; St. Mary Parish and Vermilion Parish.

19 (4) District 4 is composed of Allen Parish; Beauregard Parish; Bienville Parish;
 20 Bossier Parish; Caddo Parish; Claiborne Parish; De Soto Parish; Evangeline Parish;
 21 Natchitoches Parish; Red River Parish; Sabine Parish; Precincts 1-2, 1-2A, 1-3, 1-3A, 1-5,
 22 1-14, 1-19, 1-23, 1-24, 2-1, 2-3, 2-4, 2-5, 2-7, 2-9, 3-2, 4-8, 5-1, 5-2, 5-3, 5-4, 5-5, 5-6, 5-8,
 23 6-1, 6-2, 6-3, 6-4, 6-5, 6-6, 6-7, 6-8, 6-9, 6-10, 6-11, 6-11A, 6-13, 6-14, 6-15, 6-16 and
 24 6-16A of St. Landry Parish; Union Parish; Vernon Parish and Webster Parish.

25 (5) District 5 is composed of Avoyelles Parish; Caldwell Parish; Catahoula Parish;
 26 Concordia Parish; East Carroll Parish; Precincts 1-2B, 3-1A, 3-1B, 3-1C, 3-2A, 3-2B, 4-1A,
 27 4-1B, 4-2, 5-1, 5-3, 7-1, 8-1A and 8-1B of East Feliciana Parish; Franklin Parish; Grant
 28 Parish; Jackson Parish; La Salle Parish; Lincoln Parish; Madison Parish; Morehouse Parish;
 29 Ouachita Parish; Rapides Parish; Richland Parish; Precincts 1-1 and 6-1 of St. Helena Parish;
 30 Precincts 1-1, 1-4, 1-4A, 1-6, 1-7, 1-8, 1-9, 1-10, 1-11, 1-12, 1-13, 1-15, 1-15A, 1-16, 1-17,
 31 1-18, 1-20, 1-21, 1-22, 1-25, 1-26, 1-26A, 1-28, 1-28A, 1-29, 3-1, 3-4, 3-5, 3-6, 4-2, 4-3, 4-4,
 32 4-5, 4-6, 4-7, 4-9, 4-10, 4-11, 4-12, 4-12A and 4-13 of St. Landry Parish; Precincts 1, 2, 6,
 33 11, 15, 16, 17, 18, 26, 28A, 40, 40A, 41, 43, 44, 101, 102, 103, 104, 104A, 105, 106, 106A,
 34 106B, 107, 108, 109, 109A, 110, 111, 111A, 112, 114, 115B, 116, 118, 120, 120A, 120B and
 35 129 of Tangipahoa Parish; Tensas Parish; Washington Parish; West Carroll Parish; West
 36 Feliciana Parish and Winn Parish.

37 (6) District 6 is composed of Precincts 1, 2, 3, 4, 5, 6, 7, 8, 9, 10, 11, 12, 13, 14, 15,
 38 16, 17, 18, 19, 20, 21, 22, 23, 24, 25, 26, 27, 28, 31, 32, 33, 34, 35, 40, 41, 43, 58 and 61 of
 39 Ascension Parish; Precincts 2-1, 2-3, 3-1, 3-2, 4-1, 4-2, 5-1, 5-2, 5-3, 5-4, 7-2, 8-1 and 9-1
 40 of Assumption Parish; Precincts 1-1, 1-7, 1-8, 1-9, 1-12, 1-33, 1-34, 1-35, 1-37, 1-38, 1-39,
 41 1-40, 1-41, 1-42, 1-43, 1-44, 1-46, 1-47, 1-48, 1-49, 1-52, 1-53, 1-54, 1-55, 1-56, 1-57, 1-59,
 42 1-60, 1-64, 1-65, 1-66, 1-68, 1-69, 1-70, 1-71, 1-72, 1-73, 1-74, 1-75, 1-78, 1-80, 1-81, 1-82,
 43 1-83, 1-87, 1-88, 1-89, 1-90, 1-97, 1-98, 1-99, 1-102, 1-103, 1-105, 1-107, 2-2, 2-3, 2-4, 2-5,
 44 2-6, 2-7, 2-8, 2-10, 2-12, 2-14, 2-15, 2-17, 2-18, 2-19, 2-21, 2-25, 2-26, 2-27, 2-28, 2-29,
 45 2-31, 2-32, 3-1, 3-2, 3-3, 3-4, 3-5, 3-6, 3-7, 3-8, 3-9, 3-10, 3-11, 3-12, 3-13, 3-14, 3-15, 3-16,
 46 3-17, 3-18, 3-19, 3-20, 3-21, 3-22, 3-23, 3-24, 3-25, 3-26, 3-27, 3-28, 3-29, 3-30, 3-31, 3-32,
 47 3-33, 3-34, 3-35, 3-36, 3-37, 3-38, 3-39, 3-40, 3-41, 3-42, 3-43, 3-44, 3-45, 3-46, 3-47, 3-48,
 48 3-49, 3-50, 3-51, 3-52, 3-53, 3-54 and 3-55 of East Baton Rouge Parish; Precincts 1-1, 1-2A,
 49 1-3, 2-1A, 2-1B, 2-1C, 5-2 and 6-1 of East Feliciana Parish; Precincts 4, 5, 6A, 13, 15B, 24,
 50 25, 25A, 25B, 26, 26A, 27, 28, 29, 30, 31 and 32 of Iberville Parish; Precincts 6-K, 7-K,
 51 8-K, 9-K, 10-K, 13-KA, 14-K, 16-K, 17-K, 34-K and 35-K of Jefferson Parish; Precincts
 52 1-1, 1-2, 1-3, 1-4, 2-1, 2-1A, 2-2, 2-3, 2-3A, 2-4, 2-4A, 2-5, 2-6, 2-7, 2-8, 2-9, 2-10, 2-11,
 53 2-12, 2-13, 2-14, 3-1, 5-1, 5-1A, 5-1B, 5-2, 6-1, 6-2, 6-3, 6-4, 7-1, 7-2, 7-3, 7-4, 11-3 and
 54 11-4 of Lafourche Parish; Livingston Parish; Pointe Coupee Parish; Precincts 1-6, 3-1, 3-2,
 55 3-3, 3-4, 3-6, 5-2, 5-3, 5-5, 6-1, 6-2, 6-3, 6-4 and 6-5 of St. Charles Parish; Precincts 1-2,
 56 2-1, 2-2, 3-1, 3-2, 3-3, 4-1, 4-2, 5-1, 5-2 and 6-2 of St. Helena Parish; Precincts 4-8, 5-3, 5-4,
 57 5-6, 5-7, 7-2, 7-3, 7-4 and 7-5 of St. John the Baptist Parish; Precincts 27, 27A, 28, 33, 42,
 58 117, 119, 121, 121A, 121B, 123, 125, 127, 127A, 129A and 133 of Tangipahoa Parish and
 59 Precincts 2-1A, 2-1B, 2-2, 2-3, 3-1B, 4-1, 4-3B, 6-1, 6-2, 7-1, 7-2, 7-3 and 7-4 of West
 60 Baton Rouge Parish.”

Plan Statistics

<u>Districts:</u>	<u># of Members</u>	<u>Actual Population</u>	<u>Ideal Population</u>	<u>Absolute Deviation</u>	<u>Relative Deviation</u>
District 1	1	755,555	755,562	-7	-0.001%
District 2	1	755,538	755,562	-24	-0.003%
District 3	1	755,596	755,562	34	0.004%
District 4	1	755,605	755,562	43	0.006%
District 5	1	755,586	755,562	24	0.003%
District 6	1	755,492	755,562	-70	-0.009%
Grand Total:	6	4,533,372	4,533,372		

Ideal Population Per Member:	755562		
Number of Districts for Plan Type:	6		
Range of District Populations:	755,492	to	755,605
Absolute Mean Deviation:	19		
Absolute Range:	-70	to	43
Absolute Overall Range:	113		
Relative Mean Deviation:	0.00%		
Relative Range:	-0.01%	to	0.01%
Relative Overall Range:	0.02%		

<i>Ideal - Actual:</i>	0
<i>Remainder:</i>	0
<i>Unassigned Population:</i>	0

Total Population

	Total Population	Total White	Total Black	Total Asian	Total American Indian	Total Other	Total Hispanic	Reg Total Jan 2011
District 1	755,555	600,316	102,559	16,759	15,525	20,396	52,097	450,966
	100.000%	79.454%	13.574%	2.218%	2.055%	2.699%	6.895%	78.100%
District 2	755,538	236,430	475,543	20,562	4,039	18,964	43,372	448,947
	100.000%	31.293%	62.941%	2.722%	0.535%	2.510%	5.741%	78.818%
District 3	755,596	532,798	194,139	11,486	6,003	11,170	23,014	458,419
	100.000%	70.514%	25.693%	1.520%	0.794%	1.478%	3.046%	81.614%
District 4	755,605	462,166	263,408	8,765	10,324	10,942	24,176	432,023
	100.000%	61.165%	34.861%	1.160%	1.366%	1.448%	3.200%	76.217%
District 5	755,586	465,615	271,956	6,239	5,757	6,019	14,882	449,631
	100.000%	61.623%	35.993%	0.826%	0.762%	0.797%	1.970%	79.055%
District 6	755,492	538,867	179,280	17,740	4,905	14,700	35,019	440,389
	100.000%	71.327%	23.730%	2.348%	0.649%	1.946%	4.635%	77.118%
Grand Total	4,533,372	2,836,192	1,486,885	81,551	46,553	82,191	192,560	2,680,375
	100.000%	62.563%	32.799%	1.799%	1.027%	1.813%	4.248%	78.480%

Voter Registration

	Reg Total Jan 2011	Reg White Jan 2011	Reg Black Jan 2011	Reg Other Jan 2011	Reg Dem Total Jan 2011	Reg Rep Total Jan 2011	Reg Other Total Jan 2011
District 1	450,966	376,436	46,121	28,409	168,324	167,168	115,474
	78.100%	83.473%	10.227%	6.300%	37.325%	37.069%	25.606%
District 2	448,947	144,721	276,668	27,558	302,120	51,268	95,559
	78.818%	32.236%	61.626%	6.138%	67.295%	11.420%	21.285%
District 3	458,419	336,889	107,033	14,497	229,704	120,787	107,928
	81.614%	73.489%	23.348%	3.162%	50.108%	26.349%	23.544%
District 4	432,023	276,373	140,630	15,020	221,287	118,015	92,721
	76.217%	63.972%	32.552%	3.477%	51.221%	27.317%	21.462%
District 5	449,631	293,556	144,940	11,135	239,112	117,749	92,770
	79.055%	65.288%	32.235%	2.476%	53.180%	26.188%	20.632%
District 6	440,389	333,142	88,685	18,562	194,439	143,203	102,747
	77.118%	75.647%	20.138%	4.215%	44.152%	32.517%	23.331%
Grand Total	2,680,375	1,761,117	804,077	115,181	1,354,986	718,190	607,199

Splits

	Total Population	Total White	Total Black	Total Asian	Total American Indian	Total Other	VAP Total	VAP White	VAP Black	VAP Asian	VAP American Indian	VAP Other	Reg Total Jan 2011	Reg White Jan 2011	Reg Black Jan 2011	Reg Other Jan 2011
District 1																
*Jefferson	207,543	168,466	20,611	7,667	1,523	9,276	166,700	137,889	14,695	5,862	1,150	7,104	125,108	108,102	7,119	9,887
*Lafourche	50,253	41,814	3,407	475	2,826	1,731	37,681	32,231	2,096	331	1,790	1,233	26,821	24,650	1,280	891
*Orleans	41,766	36,574	2,981	1,322	209	680	34,977	30,789	2,375	1,107	164	542	27,555	23,712	1,298	2,545
Plaquemines	23,042	16,246	4,951	844	556	445	16,713	12,086	3,367	583	396	281	14,534	10,541	3,075	918
St. Bernard	35,897	26,579	6,705	873	522	1,218	26,720	20,490	4,338	640	370	882	23,358	19,332	2,829	1,197
St. Tammany	233,740	195,364	28,449	3,807	2,182	3,938	173,604	147,964	18,752	2,570	1,579	2,739	143,614	121,851	13,495	8,268
*Tangipahoa	51,454	36,682	13,383	438	332	619	38,287	28,625	8,682	307	243	430	30,677	22,911	6,757	1,009
Terrebonne	111,860	78,591	22,072	1,333	7,375	2,489	82,737	60,621	14,647	986	4,725	1,758	59,299	45,337	10,268	3,694
District 1	755,555	600,316	102,559	16,759	15,525	20,396	577,419	470,695	68,952	12,386	10,417	14,969	450,966	376,436	46,121	28,409
	100.000%	79.454%	13.574%	2.218%	2.055%	2.699%	100.000%	81.517%	11.941%	2.145%	1.804%	2.592%	78.100%	83.473%	10.227%	6.300%
District 2																
*Ascension	20,312	6,464	13,272	116	65	395	14,646	5,200	9,055	92	48	251	12,296	4,183	7,799	314
*Assumption	7,637	3,231	4,322	15	20	49	5,682	2,574	3,044	10	13	41	4,861	2,092	2,745	24
*East Baton Rouge	102,184	6,283	94,676	414	232	579	73,504	5,657	66,901	334	179	433	59,047	3,719	53,579	1,749
*Iberville	23,326	9,305	13,707	88	59	167	18,044	7,711	10,098	61	50	124	13,342	5,439	7,706	197
*Jefferson	199,994	86,163	92,420	9,661	1,707	10,043	148,845	69,210	63,850	7,230	1,203	7,352	113,417	51,538	51,329	10,550
*Orleans	302,063	76,854	207,466	9,629	1,487	6,627	235,637	68,891	152,319	7,733	1,235	5,459	184,217	46,724	124,350	13,143
*St. Charles	33,730	21,415	11,294	330	247	444	24,648	16,154	7,817	203	167	307	20,151	13,553	5,891	707
St. James	22,102	10,615	11,290	43	52	102	16,401	8,231	8,039	26	41	64	14,703	7,249	7,260	194
*St. John the Baptist	33,564	11,307	21,438	207	135	477	24,335	9,007	14,773	135	99	321	20,184	7,059	12,492	633
*West Baton Rouge	10,626	4,793	5,658	59	35	81	7,859	3,756	3,973	51	28	51	6,729	3,165	3,517	47
District 2	755,538	236,430	475,543	20,562	4,039	18,964	569,601	196,391	339,869	15,875	3,063	14,403	448,947	144,721	276,668	27,558
	100.000%	31.293%	62.941%	2.722%	0.535%	2.510%	100.000%	34.479%	59.668%	2.787%	0.538%	2.529%	78.818%	32.236%	61.626%	6.138%
District 3																
Acadia	61,773	49,127	11,645	196	313	492	44,910	36,554	7,668	131	213	344	37,256	30,346	6,441	469
Calcasieu	192,768	136,514	49,825	2,550	1,626	2,253	143,756	105,077	34,139	1,846	1,187	1,507	117,844	86,021	27,975	3,848
Cameron	6,839	6,546	135	10	60	88	5,183	5,011	74	9	38	51	5,536	5,272	188	76
Iberia	73,240	45,551	24,091	1,926	428	1,244	53,398	35,137	15,754	1,308	307	892	45,139	30,016	13,917	1,206
Jefferson Davis	31,594	25,125	5,836	98	275	260	23,196	18,871	3,891	66	180	188	19,337	15,808	3,132	397
Lafayette	221,578	153,706	58,912	3,891	1,290	3,779	167,315	120,566	40,203	2,884	951	2,711	131,124	95,632	30,155	5,337
*St. Landry	2,995	2,588	354	5	16	32	2,275	1,986	261	3	11	14	1,736	1,505	184	47
St. Martin	52,160	34,313	16,397	478	350	622	38,389	26,320	11,090	316	227	436	33,849	22,866	9,886	1,097
St. Mary	54,650	32,406	18,290	1,058	1,269	1,627	40,746	25,191	12,797	773	837	1,148	31,845	20,072	10,527	1,246
Vermilion	57,999	46,922	8,654	1,274	376	773	42,522	35,424	5,457	902	259	480	34,753	29,351	4,628	774

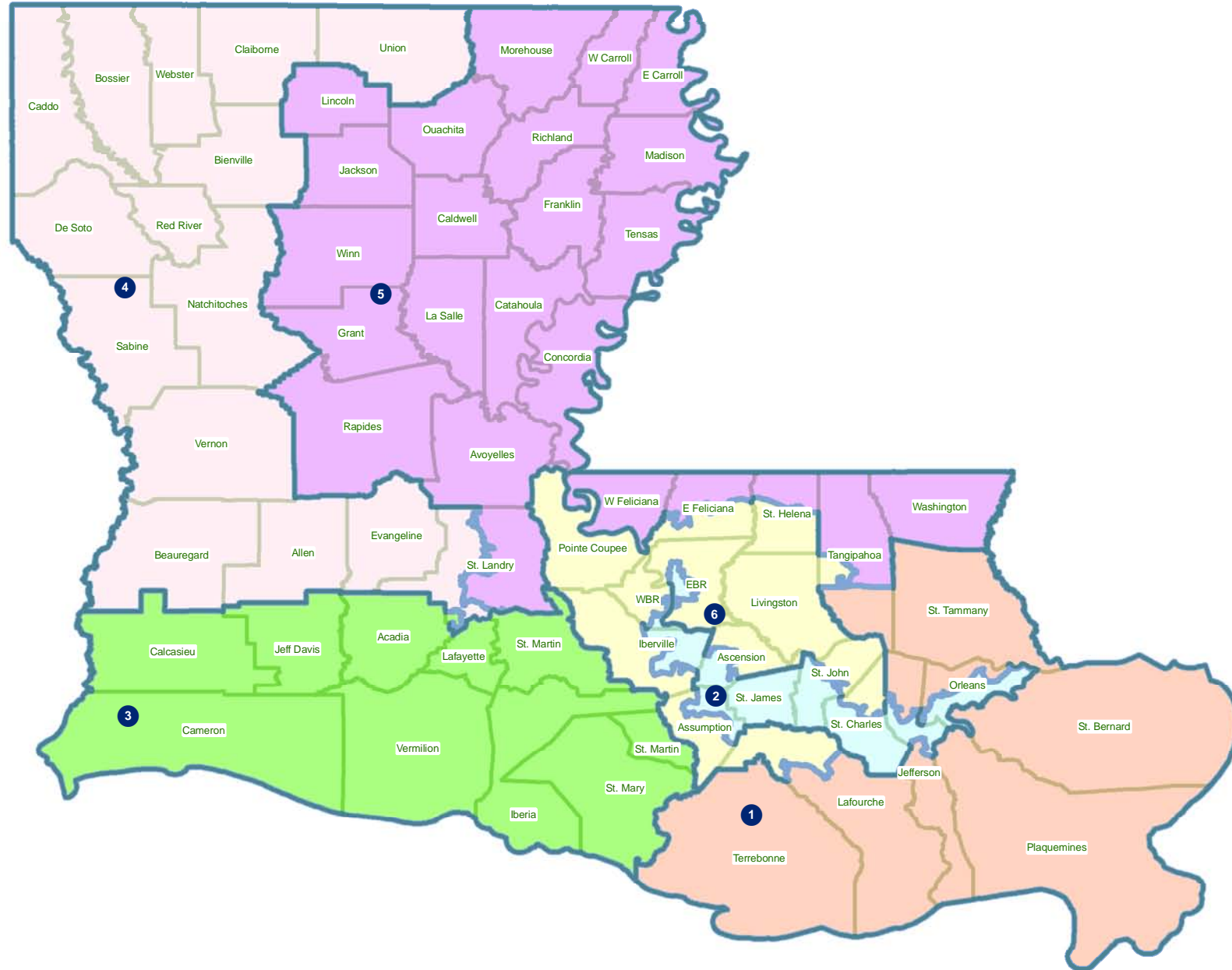
Splits

	Total Population	Total White	Total Black	Total Asian	Total American Indian	Total Other	VAP Total	VAP White	VAP Black	VAP Asian	VAP American Indian	VAP Other	Reg Total Jan 2011	Reg White Jan 2011	Reg Black Jan 2011	Reg Other Jan 2011
District 3	755,596	532,798	194,139	11,486	6,003	11,170	561,690	410,137	131,334	8,238	4,210	7,771	458,419	336,889	107,033	14,497
	100.000%	70.514%	25.693%	1.520%	0.794%	1.478%	100.000%	73.018%	23.382%	1.467%	0.750%	1.384%	81.614%	73.489%	23.348%	3.162%
District 4																
Allen	25,764	18,435	6,192	220	749	168	19,870	14,288	4,828	154	495	105	13,110	10,190	2,397	523
Beauregard	35,654	29,321	5,016	353	652	312	26,359	21,902	3,569	239	460	189	19,924	16,703	2,304	917
Bienville	14,353	7,935	6,153	44	132	89	11,012	6,279	4,544	31	105	53	9,256	5,112	4,085	59
Bossier	116,979	84,430	25,606	2,516	1,139	3,288	86,945	64,692	17,413	1,836	837	2,167	60,834	46,663	11,491	2,680
Caddo	254,969	124,942	122,229	3,230	1,906	2,662	192,315	100,748	85,902	2,363	1,455	1,847	151,374	79,163	66,708	5,503
Claiborne	17,195	8,167	8,820	62	99	47	13,815	6,781	6,889	37	80	28	8,877	4,908	3,872	97
De Soto	26,656	15,456	10,600	54	331	215	20,006	12,055	7,495	42	273	141	16,396	9,663	6,191	542
Evangeline	33,984	23,439	9,862	139	161	383	24,817	17,619	6,661	97	117	323	21,407	15,267	5,973	167
Natchitoches	39,566	21,494	16,778	197	649	448	29,966	17,226	11,771	151	477	341	22,982	13,181	8,878	923
Red River	9,091	5,360	3,633	16	43	39	6,778	4,256	2,450	12	34	26	5,981	3,566	2,377	38
Sabine	24,233	17,155	4,234	84	2,636	124	18,311	13,544	2,835	63	1,796	73	13,837	10,811	2,032	994
*St. Landry	40,899	24,267	15,686	195	219	532	29,824	18,325	10,815	137	157	390	27,548	16,287	10,702	559
Union	22,721	15,682	6,242	49	115	633	17,493	12,568	4,439	31	91	364	14,964	10,863	3,709	392
Vernon	52,334	39,614	8,313	1,426	1,177	1,804	37,822	29,416	5,349	1,026	848	1,183	21,620	17,881	2,495	1,244
Webster	41,207	26,469	14,044	180	316	198	31,497	20,907	10,110	120	241	119	23,913	16,115	7,416	382
District 4	755,605	462,166	263,408	8,765	10,324	10,942	566,830	360,606	185,070	6,339	7,466	7,349	432,023	276,373	140,630	15,020
	100.000%	61.165%	34.861%	1.160%	1.366%	1.448%	100.000%	63.618%	32.650%	1.118%	1.317%	1.297%	76.217%	63.972%	32.552%	3.477%
District 5																
Avoyelles	42,073	28,188	12,876	174	641	194	31,790	21,850	9,247	126	431	136	23,105	16,874	5,790	441
Caldwell	10,132	8,213	1,778	30	64	47	7,758	6,314	1,336	23	51	34	6,324	5,351	911	62
Catahoula	10,407	6,985	3,318	9	53	42	8,057	5,543	2,438	8	43	25	6,380	4,749	1,596	35
Concordia	20,822	11,959	8,604	59	123	77	15,589	9,298	6,117	41	88	45	12,696	7,997	4,529	170
East Carroll	7,759	2,245	5,398	47	31	38	5,766	1,845	3,830	37	25	29	5,330	1,617	3,664	49
*East Feliciana	11,728	5,161	6,437	46	63	21	9,506	4,342	5,063	40	46	15	7,335	3,641	3,321	373
Franklin	20,767	13,930	6,620	65	82	70	15,450	10,838	4,471	42	63	36	13,466	9,408	3,978	80
Grant	22,309	18,149	3,602	97	385	76	17,158	13,788	2,978	67	274	51	11,900	10,361	1,284	255
Jackson	16,274	11,084	4,947	67	83	93	12,570	8,681	3,724	39	65	61	9,846	6,879	2,805	162
La Salle	14,890	12,689	1,808	40	215	138	11,366	9,677	1,402	35	143	109	8,427	7,648	621	158
Lincoln	46,735	25,775	19,184	874	230	672	37,130	20,875	14,821	749	183	502	24,016	14,604	8,519	893
Madison	12,093	4,498	7,452	33	55	55	9,071	3,644	5,312	20	45	50	7,634	2,780	4,764	90
Morehouse	27,979	14,345	13,281	142	102	109	21,061	11,583	9,230	102	79	67	18,681	10,048	8,329	304
Ouachita	153,720	92,884	57,194	1,722	705	1,215	113,347	72,316	38,405	1,248	549	829	94,408	59,945	30,997	3,466
Rapides	131,613	83,373	43,150	1,912	1,682	1,496	97,599	64,579	29,368	1,377	1,270	1,005	78,056	53,328	22,107	2,621

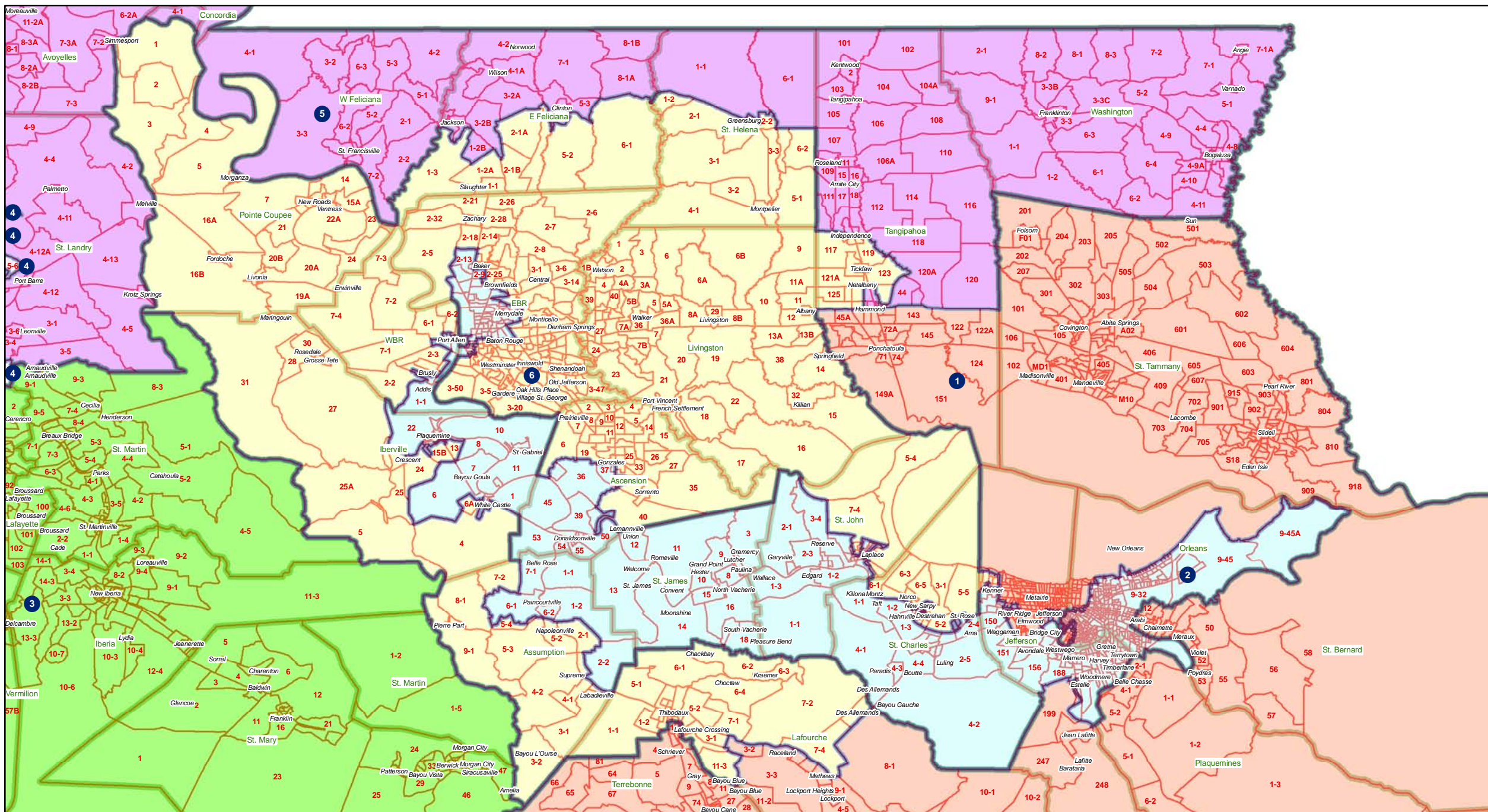
Splits

	Total Population	Total White	Total Black	Total Asian	Total American Indian	Total Other	VAP Total	VAP White	VAP Black	VAP Asian	VAP American Indian	VAP Other	Reg Total Jan 2011	Reg White Jan 2011	Reg Black Jan 2011	Reg Other Jan 2011
District 5																
Richland	20,725	12,879	7,544	92	96	114	15,440	9,999	5,237	65	70	69	12,939	8,173	4,646	120
*St. Helena	2,734	1,755	929	2	32	16	2,172	1,441	695	2	25	9	2,250	1,493	735	22
*St. Landry	39,490	19,760	19,113	195	171	251	28,605	15,282	12,921	126	110	166	27,265	14,109	12,705	451
*Tangipahoa	48,374	30,214	16,882	346	336	596	36,568	23,862	11,780	273	257	396	26,979	17,896	8,340	743
Tensas	5,252	2,202	2,991	13	15	31	3,923	1,796	2,085	11	9	22	4,131	1,807	2,304	20
Washington	47,168	31,482	14,884	145	305	352	35,305	24,363	10,374	101	238	229	25,608	17,973	7,239	396
West Carroll	11,604	9,497	1,870	34	86	117	8,746	7,254	1,330	24	62	76	7,167	6,017	1,096	54
West Feliciana	15,625	8,125	7,317	42	35	106	12,907	6,412	6,364	24	33	74	6,796	4,448	2,254	94
Winn	15,313	10,223	4,777	53	167	93	11,871	8,018	3,619	44	129	61	8,892	6,410	2,406	76
District 5	755,586	465,615	271,956	6,239	5,757	6,019	568,755	363,600	192,147	4,624	4,288	4,096	449,631	293,556	144,940	11,135
	100.000%	61.623%	35.993%	0.826%	0.762%	0.797%	100.000%	63.929%	33.784%	0.813%	0.754%	0.720%	79.055%	65.288%	32.235%	2.476%
District 6																
*Ascension	86,903	72,108	11,194	1,118	521	1,962	61,814	52,137	7,356	724	364	1,233	51,808	44,049	5,457	2,302
*Assumption	15,784	12,404	2,928	53	170	229	11,983	9,622	2,055	41	112	153	9,927	8,001	1,841	85
*East Baton Rouge	337,987	208,644	107,858	13,150	1,681	6,654	263,002	172,218	74,395	10,137	1,307	4,945	193,570	134,432	50,231	8,907
*East Feliciana	8,539	5,622	2,813	21	64	19	6,569	4,433	2,060	18	48	10	6,076	3,988	1,805	283
*Iberville	10,061	6,975	2,913	36	58	79	7,841	5,543	2,160	24	48	66	7,110	4,975	2,048	87
*Jefferson	25,015	17,486	3,968	1,315	172	2,074	19,610	14,174	2,757	1,018	136	1,525	13,552	9,487	1,685	2,380
*Lafourche	46,065	34,631	9,956	380	631	467	34,971	27,131	6,849	281	397	313	26,890	21,177	5,036	677
Livingston	128,026	117,601	6,941	906	1,055	1,523	92,696	85,855	4,535	565	782	959	71,580	66,508	2,985	2,087
Pointe Coupee	22,802	14,010	8,427	69	71	225	17,327	11,073	6,020	44	57	133	15,464	9,584	5,696	184
*St. Charles	19,050	15,125	3,101	245	124	455	13,924	11,291	2,051	154	96	332	11,554	9,360	1,563	631
*St. Helena	8,469	3,279	5,085	14	40	51	6,268	2,595	3,596	9	35	33	6,182	2,323	3,782	77
*St. John the Baptist	12,360	8,194	3,506	207	102	351	9,233	6,401	2,354	155	65	258	7,601	5,407	1,773	421
*Tangipahoa	21,269	13,310	7,116	171	166	506	15,822	10,644	4,597	130	131	320	11,008	7,772	2,892	344
*West Baton Rouge	13,162	9,478	3,474	55	50	105	10,002	7,311	2,544	41	39	67	8,067	6,079	1,891	97
District 6	755,492	538,867	179,280	17,740	4,905	14,700	571,062	420,428	123,329	13,341	3,617	10,347	440,389	333,142	88,685	18,562
	100.000%	71.327%	23.730%	2.348%	0.649%	1.946%	100.000%	73.622%	21.596%	2.336%	0.633%	1.812%	77.118%	75.647%	20.138%	4.215%

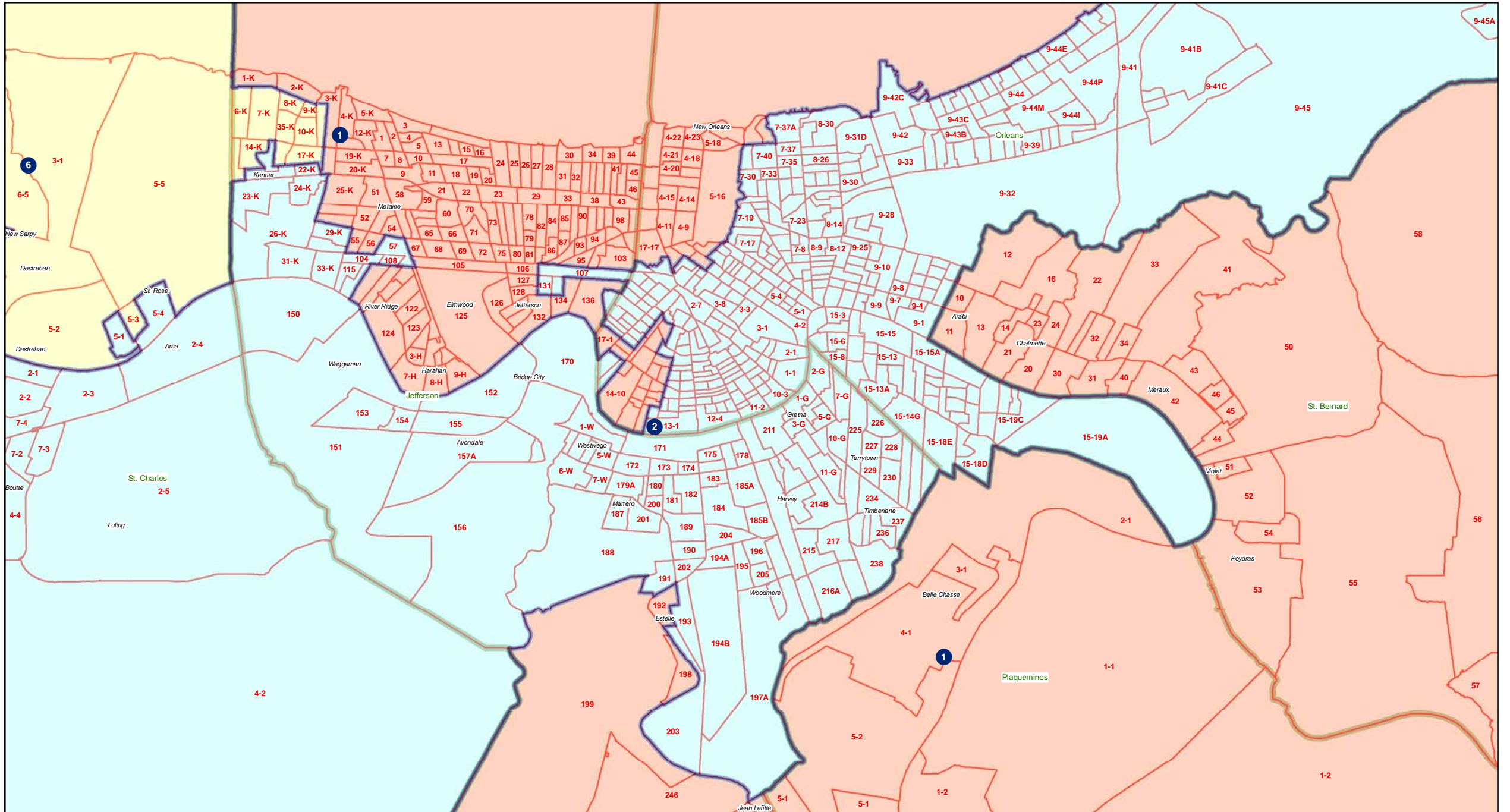
Congress - Statewide



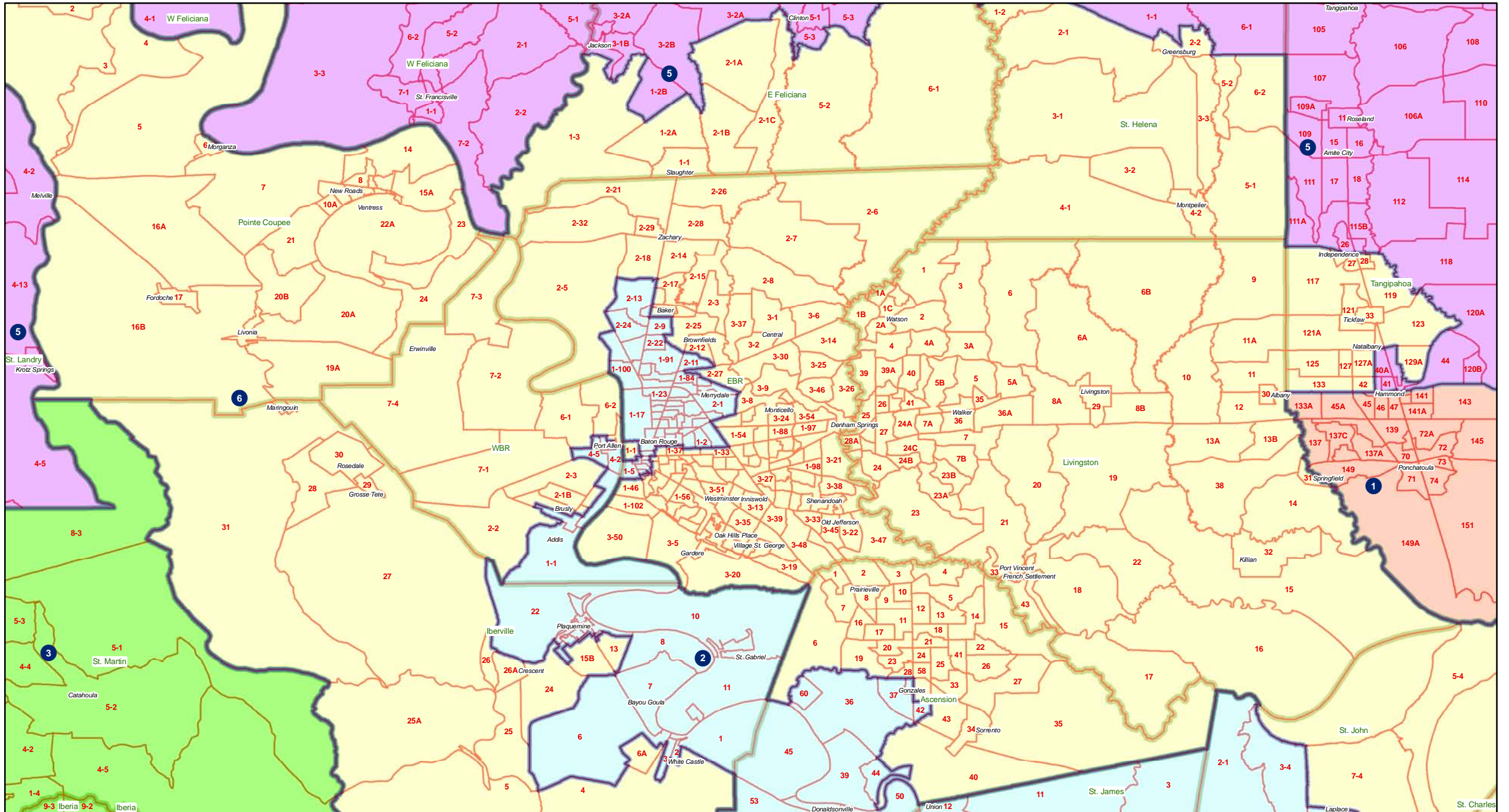
Congress - River area - Florida Parishes



Congress - Jefferson - Orleans



Congress - Baton Rouge area



Congress - St. Landry

