
SENATE FLOOR AMENDMENTS

Amendments proposed by Senator Broome to Reengrossed House Bill No. 6 by Representative Ponti

1 AMENDMENT NO. 1

2 Delete Senate Floor Amendments SFAHB6 MORAINS 417 proposed by Senator Riser and
3 adopted by the Senate on April 13, 2011

4 AMENDMENT NO. 2

5 On page 1, delete lines 13 through 19, and delete pages 2 through 5 in their entirety, and on
6 page 6, delete lines 1 through 8, and insert the following:

7 “(1) District 1 is composed of Precincts 3-1 and 3-2 of Assumption Parish; Precincts
8 3-3, 3-4, 5-4, 5-5, 10-2, 10-3, 10-4, 10-6, 10-7, 13-1, 13-2, 13-3, 13-4, 14-1, 14-3 and 14-4
9 of Iberia Parish; Precincts 1, 2, 3, 4, 5, 7, 8, 9, 10, 11, 12, 13, 14, 15, 16, 17, 18, 19, 20, 21,
10 22, 23, 24, 25, 26, 27, 28, 29, 30, 31, 32, 33, 34, 35, 36, 37, 38, 39, 40, 41, 42, 43, 44, 45, 46,
11 51, 52, 53, 54, 55, 56, 57, 58, 59, 60, 61, 62, 63, 64, 65, 66, 67, 68, 69, 70, 71, 72, 73, 74, 75,
12 76, 77, 78, 79, 80, 81, 82, 83, 84, 85, 86, 87, 88, 89, 90, 91, 92, 93, 94, 95, 96, 97, 98, 99,
13 100, 101, 102, 103, 105, 106, 116, 117, 118, 119, 120, 121, 122, 123, 124, 125, 126, 127,
14 128, 129, 130, 132, 134, 136, 170, 171, 172, 174, 175, 176, 177, 178, 179A, 183, 185A, 192,
15 193, 194A, 194B, 198, 199, 202, 203, 210, 211, 226, 227, 228, 229, 230, 234, 246, 247, 248,
16 3-G, 5-G, 9-G, 10-G, 12-G, 1-GI, 1-H, 2-H, 3-H, 4-H, 5-H, 6-H, 7-H, 8-H, 9-H, 1-K, 2-K,
17 3-K, 4-K, 5-K, 6-K, 7-K, 8-K, 9-K, 10-K, 11-K, 12-K, 13-KA, 13-KB, 14-K, 15-K, 16-K,
18 17-K, 18-K, 19-K, 20-K, 25-K, 27-K, 28-K, 29-K, 30-K, 34-K, 35-K, 1-L, 1-W, 3-W, 4-W,
19 5-W, 6-W and 7-W of Jefferson Parish; Precincts 101, 102, 103, 106, 107, 108, 110 and 111
20 of Lafayette Parish; Lafourche Parish; Precincts 3-14, 3-19, 4-6, 4-7, 4-8, 4-9, 4-11, 4-14,
21 4-15, 4-17, 4-17A, 4-18, 4-20, 4-21, 4-22, 4-23, 5-11, 5-12, 5-13, 5-15, 5-16, 5-17, 5-18,
22 7-37A, 7-41, 7-42, 9-45, 9-45A, 13-8, 13-10, 13-12, 14-1, 14-2, 14-3, 14-4, 14-5, 14-6, 14-7,
23 14-8, 14-9, 14-10, 14-11, 14-12, 14-13A, 14-14, 14-15, 14-16, 14-17, 14-18A, 14-19, 14-21,
24 16-1, 16-1A, 16-2, 16-3, 16-4, 16-5, 16-6, 16-7, 16-8, 17-17, 17-18, 17-18A, 17-19 and
25 17-20 of Orleans Parish; Plaquemines Parish; St. Bernard Parish; Precincts 1-6, 3-1, 3-2, 3-3,
26 3-4, 3-5, 3-6, 4-2, 5-1, 5-2, 5-3, 5-4, 5-5, 6-1, 6-2, 6-3, 6-4, 6-5, 6-6, 6-7 and 6-8 of St.
27 Charles Parish; Precincts 1-5 of St. Martin Parish; Precincts 1, 11, 23, 24, 25, 26, 27, 28, 29,
28 30, 31, 32, 33, 34, 35, 36, 37, 38, 39, 40, 41, 42, 43, 44, 45, 46 and 47 of St. Mary Parish;
29 Precincts 704, 705, 908, 909, 910, 911, 917, 921, S18 and S22 of St. Tammany Parish;
30 Terrebonne Parish and Precincts 42B, 44, 45A, 49B-1, 49B-3, 50A, 50B, 51, 53, 54, 55, 56
31 and 57A of Vermilion Parish.

32 (2) District 2 is composed of Precincts 1-1, 1-2, 2-1, 2-2, 2-3, 4-1, 4-2, 5-1, 5-2, 5-3,
33 5-4, 6-1, 6-2, 7-1, 7-2, 8-1 and 9-1 of Assumption Parish; Precincts 1-1, 1-2, 1-3, 2-1, 2-2,
34 2-3, 3-1, 3-2, 4-1, 4-2, 4-3, 4-4, 5-1, 5-2, 5-3, 6-1, 6-2, 6-3, 6-4, 7-1, 7-2, 7-3, 7-4, 7-5, 8-1,
35 8-2, 8-4, 8-5, 9-1, 9-2, 9-3, 9-4, 9-5, 10-5, 11-1, 11-2, 11-3, 11-4, 11-5, 12-1, 12-2, 12-3 and
36 12-4 of Iberia Parish; Precincts 104, 107, 108, 115, 131, 133, 138, 150, 151, 152, 153, 154,
37 155, 156, 157A, 157B, 173, 179B, 180, 181, 182, 184, 185B, 187, 188, 189, 190, 191, 195,
38 196, 197A, 197B, 197C, 200, 201, 204, 205, 212A, 212B, 213A, 213B, 213C, 214A, 214B,
39 215, 216A, 216B, 217, 225, 231, 232A, 232B, 235, 236, 237, 238, 1-G, 2-G, 4-G, 6-G, 7-G,
40 8-G, 11-G, 13-G, 21-K, 22-K, 23-K, 24-K, 26-K, 31-K, 33-K and 2-W of Jefferson Parish;
41 Precincts 1, 2, 4, 5, 6, 7, 11, 12, 13, 14, 15, 16, 17, 18, 19, 20, 21, 22, 23, 24, 50, 51, 52, 53,
42 54, 55, 56, 57, 58, 59, 60, 61, 62, 63, 64, 68, 99 and 100 of Lafayette Parish; Precincts 1-1,
43 1-2, 1-5, 1-6, 2-1, 2-2, 2-3, 2-4, 2-6, 2-6A, 2-7, 3-1, 3-3, 3-5, 3-8, 3-9, 3-12, 3-15, 3-18, 3-20,
44 4-2, 4-3, 4-4, 4-5, 5-1, 5-2, 5-3, 5-4, 5-5, 5-7, 5-8, 5-9, 5-10, 6-1, 6-2, 6-4, 6-6, 6-7, 6-8, 6-9,
45 7-1, 7-2, 7-4, 7-5, 7-6, 7-7, 7-8, 7-9A, 7-10, 7-11, 7-12, 7-13, 7-14, 7-15, 7-16, 7-17, 7-18,
46 7-19, 7-20, 7-21, 7-23, 7-24, 7-25, 7-25A, 7-26, 7-27, 7-27B, 7-28, 7-28A, 7-29, 7-30, 7-32,
47 7-33, 7-34, 7-35, 7-37, 7-40, 8-1, 8-2, 8-4, 8-6, 8-7, 8-8, 8-9, 8-12, 8-13, 8-14, 8-15, 8-19,
48 8-20, 8-21, 8-22, 8-23, 8-24, 8-25, 8-26, 8-27, 8-28, 8-30, 9-1, 9-3, 9-3A, 9-4, 9-5, 9-5A,
49 9-6B, 9-6C, 9-6D, 9-6E, 9-6F, 9-7, 9-8, 9-8A, 9-9, 9-10, 9-11, 9-12, 9-13, 9-14, 9-15, 9-16,
50 9-17, 9-19, 9-21, 9-23, 9-25, 9-26, 9-28, 9-28C, 9-28E, 9-29, 9-30, 9-30A, 9-31, 9-31A,

1 9-31B, 9-31D, 9-32, 9-33, 9-34A, 9-35, 9-35A, 9-36, 9-36B, 9-37, 9-38, 9-38A, 9-39, 9-39B,
 2 9-40, 9-40A, 9-40C, 9-41, 9-41A, 9-41B, 9-41C, 9-41D, 9-42, 9-42C, 9-43A, 9-43B, 9-43C,
 3 9-43E, 9-43F, 9-43G, 9-43H, 9-43I, 9-43J, 9-43K, 9-43L, 9-43M, 9-43N, 9-44, 9-44A,
 4 9-44B, 9-44D, 9-44E, 9-44F, 9-44G, 9-44I, 9-44J, 9-44L, 9-44M, 9-44N, 9-44O, 9-44P,
 5 9-44Q, 10-3, 10-6, 10-7, 10-8, 10-9, 10-11, 10-12, 10-13, 10-14, 11-2, 11-3, 11-4, 11-5,
 6 11-8, 11-9, 11-10, 11-11, 11-12, 11-13, 11-14, 11-17, 12-1, 12-2, 12-3, 12-4, 12-5, 12-6,
 7 12-7, 12-8, 12-9, 12-10, 12-11, 12-12, 12-13, 12-14, 12-16, 12-17, 12-19, 13-1, 13-2, 13-3,
 8 13-4, 13-5, 13-6, 13-7, 13-9, 13-11, 13-13, 13-14, 13-15, 13-16, 14-20, 14-23, 14-24A,
 9 14-25, 14-26, 15-1, 15-2, 15-3, 15-5, 15-6, 15-8, 15-9, 15-10, 15-11, 15-12, 15-12A, 15-13,
 10 15-13A, 15-13B, 15-14, 15-14A, 15-14B, 15-14C, 15-14D, 15-14E, 15-14F, 15-14G, 15-15,
 11 15-15A, 15-15B, 15-16, 15-17, 15-17A, 15-17B, 15-18, 15-18A, 15-18B, 15-18C, 15-18D,
 12 15-18E, 15-18F, 15-19, 15-19A, 15-19B, 15-19C, 16-9, 17-1, 17-2, 17-3, 17-4, 17-5, 17-6,
 13 17-7, 17-8, 17-9, 17-10, 17-11, 17-12, 17-13, 17-13A, 17-14, 17-15 and 17-16 of Orleans
 14 Parish; Precincts 1-1, 1-2, 1-3, 1-5, 2-1, 2-2, 2-3, 2-4, 2-5, 4-1, 4-3, 4-4, 7-1, 7-2, 7-3 and 7-4
 15 of St. Charles Parish; St. James Parish; St. John the Baptist Parish; Precincts 1-1, 1-2, 1-2A,
 16 1-3, 1-3A, 1-4, 1-4A, 1-5, 1-7, 1-8, 1-9, 1-10, 1-11, 1-12, 1-13, 1-14, 1-15, 1-15A, 1-16,
 17 1-17, 1-18, 1-19, 1-20, 1-21, 1-22, 1-23, 1-24, 1-25, 1-28, 1-28A, 1-29, 2-1, 2-4, 2-5, 2-7,
 18 2-9, 3-2, 3-3, 3-4, 3-6, 5-3, 6-1, 6-3, 6-5, 6-6, 6-8, 6-10, 6-11, 6-11A, 6-15, 6-16 and 6-16A
 19 of St. Landry Parish; Precincts 1-1, 1-2, 1-3, 1-4, 1-7, 2-1, 2-2, 2-3, 2-4, 3-1, 3-1A, 3-1B,
 20 3-2, 3-3, 3-4, 3-4A, 3-5, 3-6, 3-9, 4-1, 4-1A, 4-2, 4-3, 4-4A, 4-5, 4-6, 6-1, 6-2, 6-2A, 6-3,
 21 6-3A, 6-3B, 6-4, 7-1, 7-1A, 7-2A, 7-3, 7-4, 7-4A, 8-4A, 9-1, 9-2 and 9-5 of St. Martin Parish
 22 and Precincts 2, 3, 4, 5, 6, 7, 8, 9, 10, 12, 13, 14, 15, 16, 17, 18, 19, 20, 21 and 22 of St. Mary
 23 Parish.

24 (3) District 3 is composed of Acadia Parish; Allen Parish; Beauregard Parish;
 25 Calcasieu Parish; Cameron Parish; Evangeline Parish; Jefferson Davis Parish; Precincts 3,
 26 8, 9, 10, 25, 26, 27, 28A, 28B, 29, 30A, 31, 32, 33, 34, 35, 36, 37, 38, 39, 40, 41, 42, 43, 44,
 27 45, 46, 47, 48, 49, 65, 66, 67, 69, 70, 71, 72, 73, 74, 75, 76, 77, 78, 79, 80, 81, 82, 83, 84, 85,
 28 86, 87, 88, 89, 90, 91, 92, 93, 94, 95, 96, 97A, 97B, 98, 104, 105 and 109 of Lafayette
 29 Parish; Precincts 1-1, 1-3, 1-3A, 1-4, 1-4A, 1-4B, 1-5, 1-5A, 1-8, 1-9, 1-9A, 1-10, 1-10A,
 30 1-10B, 1-13, 1-14, 2-9, 3-1, 3-2, 3-3, 3-4, 3-5, 3-6, 3-7, 3-8, 3-9, 3-10, 4-1, 4-2, 4-3, 4-4, 4-5,
 31 4-6, 4-7, 4-8 and 4-9 of Natchitoches Parish; Precincts C23, C30, C31, C32, C33, C34, C35,
 32 C36, C37, C41, C42, S2, S7, S8, S9, S10, S11, S13, S21, S22, S23, S24, S25, S26, S27, S28
 33 and S29 of Rapides Parish; Sabine Parish; Precincts 1-6, 1-26, 1-26A, 2-2, 2-3, 2-6, 2-8, 3-1,
 34 3-5, 4-3, 4-5, 4-7, 4-12, 4-12A, 4-13, 5-1, 5-2, 5-4, 5-5, 5-6, 5-8, 6-2, 6-4, 6-7, 6-9, 6-13 and
 35 6-14 of St. Landry Parish; Precincts 4-4, 5-1, 5-2, 5-3, 5-4, 8-1, 8-3, 8-4, 9-3 and 9-4 of St.
 36 Martin Parish; Precincts 1, 2, 3, 5A, 5B, 6, 7A, 7B, 8, 9, 10A, 11, 12, 14, 15, 16, 18, 19A,
 37 19B, 20A-1, 20A-2, 20B-1, 21, 23, 24, 25, 26, 27A-2, 28, 29, 32B, 34, 35, 36A-1, 37, 38,
 38 39, 40, 41, 42A, 46A, 46B-1, 46B-2, 46B-3 and 57B of Vermilion Parish and Vernon Parish.

39 (4) District 4 is composed of Bienville Parish; Bossier Parish; Caddo Parish;
 40 Precincts 2-1, 2-2, 3-1, 3-2, 3-3, 4-1, 4-2, 4-3, 5-1, 5-2, 5-3, 6-1, 6-2, 6-3, 7-1, 7-2 and 7-3
 41 of Caldwell Parish; Precincts 3-1, 3-2, 3-4, 4-4, 5-1, 5-2, 6-1 and 6-2 of Catahoula Parish;
 42 Claiborne Parish; De Soto Parish; Precincts 1, 2, 3, 4A, 9, 12 and 13 of Franklin Parish;
 43 Precincts 1-1, 1-2, 1-3, 2-1, 2-2, 2-3, 4-1, 4-2, 5-1, 5-2, 6-1, 6-2, 6-3, 7-1, 7-2, 7-3, 7-4, 8-1,
 44 8-2 and 8-3 of Grant Parish; Jackson Parish; La Salle Parish; Lincoln Parish; Precincts 23,
 45 27, 35, 40, 41, 42, 43, 44, 45, 47, 48, 49 and 51 of Morehouse Parish; Precincts 1-1A, 1-2,
 46 1-6, 1-7, 1-11, 1-12, 2-1, 2-2, 2-3, 2-4, 2-5, 2-6, 2-7, 2-7A and 2-8 of Natchitoches Parish;
 47 Precincts 1, 2, 4, 6, 7, 32, 33, 36, 37, 38, 40, 41, 42, 43, 44, 44A, 45, 46, 48, 49, 50, 51, 52,
 48 53, 54, 55, 56, 57, 58, 61, 64, 71, 75, 77 and 78 of Ouachita Parish; Precincts N12, N17,
 49 N18, N19, N20, N22, N23, N24, N25 and N26 of Rapides Parish; Red River Parish; Union
 50 Parish; Webster Parish; Precincts 1, 2, 3, 4, 5, 6, 7, 8, 9, 11, 12, 13, 14, 15, 16 and 18 of
 51 West Carroll Parish and Winn Parish.

52 (5) District 5 is composed of Precincts 28, 30, 31, 32, 36, 37, 39, 40, 42, 44, 45, 47,
 53 48, 49, 50, 51, 52, 53, 54, 55, 56, 57 and 58 of Ascension Parish; Avoyelles Parish; Precincts
 54 1-1 and 1-2 of Caldwell Parish; Precincts 1-1, 1-2, 1-3, 1-4, 2-1, 2-2, 2-5, 3-3, 4-1, 4-2, 6-3,
 55 6-5, 7-1, 7-3, 7-5, 8-1, 8-2, 9-1, 9-2, 9-3 and 9-4 of Catahoula Parish; Concordia Parish;
 56 Precincts 1-1, 1-2, 1-3, 1-4, 1-5, 1-6, 1-9, 1-10, 1-13, 1-14, 1-15, 1-16, 1-17, 1-18, 1-19,
 57 1-21, 1-22, 1-23, 1-24, 1-25, 1-26, 1-27, 1-28, 1-29, 1-30, 1-31, 1-32, 1-36, 1-37, 1-38, 1-45,
 58 1-46, 1-50, 1-51, 1-54, 1-55, 1-57, 1-58, 1-60, 1-61, 1-62, 1-63, 1-67, 1-68, 1-70, 1-71, 1-77,
 59 1-78, 1-81, 1-82, 1-83, 1-84, 1-85, 1-86, 1-87, 1-88, 1-90, 1-91, 1-92, 1-93, 1-94, 1-95, 1-97,
 60 1-100, 1-101, 1-102, 1-104, 2-1, 2-2, 2-3, 2-4, 2-5, 2-6, 2-7, 2-8, 2-9, 2-10, 2-11, 2-12, 2-13,
 61 2-14, 2-15, 2-16, 2-17, 2-18, 2-19, 2-20, 2-21, 2-22, 2-23, 2-24, 2-25, 2-26, 2-27, 2-28, 2-29,

1 2-30, 2-31, 2-32, 3-5, 3-8, 3-12, 3-20, 3-21, 3-24, 3-27, 3-32, 3-42, 3-44, 3-50 and 3-54 of
 2 East Baton Rouge Parish; East Carroll Parish; East Feliciana Parish; Precincts 4, 4B, 6, 7,
 3 14, 16, 18, 19, 20, 21, 22, 24, 25, 26, 27, 27A, 28A, 30, 31, 32 and 33 of Franklin Parish;
 4 Precincts 3-1, 3-2 and 3-3 of Grant Parish; Iberville Parish; Madison Parish; Precincts 1, 2,
 5 3, 4, 5, 6, 7, 8, 9, 10, 12, 13, 14, 15, 16, 17, 18, 20, 21, 22, 24, 25, 26, 28, 29, 30, 31, 33, 34,
 6 36, 37, 38, 39, 50, 52, 53, 54 and 55 of Morehouse Parish; Precincts 3, 5, 8, 9, 9A, 10, 11,
 7 12, 13, 14, 15, 16, 17, 18, 19, 20, 21, 22, 23, 24, 25, 26, 27, 28, 29, 30, 31, 34, 35, 39, 47, 59,
 8 60, 62, 63, 65, 66, 67, 68, 69, 70, 72, 73, 74, 76 and 79 of Ouachita Parish; Pointe Coupee
 9 Parish; Precincts C1, C2, C3, C4, C5, C6, C7, C8, C9, C10, C11, C13, C14, C15, C17, C18,
 10 C19, C20, C21, C22, C24, C25, C26, C27, C28, C38, C39, C40, N1, N2, N3, N4, N5, N6,
 11 N7, N8, N9, N10, N11, N13, N14, N15, N16, N21, N27, N28, N29, S1, S4, S5, S6, S14,
 12 S15, S16, S17, S18, S19 and S20 of Rapides Parish; Richland Parish; St. Helena Parish;
 13 Precincts 4-2, 4-4, 4-6, 4-8, 4-9, 4-10 and 4-11 of St. Landry Parish; Precincts 1, 2, 6, 11, 15,
 14 16, 17, 18, 26, 27A, 101, 103, 105, 106B, 107, 109, 109A, 111 and 111A of Tangipahoa
 15 Parish; Tensas Parish; West Baton Rouge Parish; Precincts 10 of West Carroll Parish and
 16 West Feliciana Parish.

17 (6) District 6 is composed of Precincts 1, 2, 3, 4, 5, 6, 7, 8, 9, 10, 11, 12, 13, 14, 15,
 18 16, 17, 18, 19, 20, 21, 22, 23, 24, 25, 26, 27, 33, 34, 35, 41, 43, 60 and 61 of Ascension
 19 Parish; Precincts 1-7, 1-8, 1-12, 1-33, 1-34, 1-35, 1-39, 1-40, 1-41, 1-42, 1-43, 1-44, 1-47,
 20 1-48, 1-49, 1-52, 1-53, 1-56, 1-59, 1-64, 1-65, 1-66, 1-69, 1-72, 1-73, 1-74, 1-75, 1-80, 1-89,
 21 1-98, 1-99, 1-103, 1-105, 1-107, 3-1, 3-2, 3-3, 3-4, 3-6, 3-7, 3-9, 3-10, 3-11, 3-13, 3-14,
 22 3-15, 3-16, 3-17, 3-18, 3-19, 3-22, 3-23, 3-25, 3-26, 3-28, 3-29, 3-30, 3-31, 3-33, 3-34, 3-35,
 23 3-36, 3-37, 3-38, 3-39, 3-40, 3-41, 3-43, 3-45, 3-46, 3-47, 3-48, 3-49, 3-51, 3-52, 3-53 and
 24 3-55 of East Baton Rouge Parish; Livingston Parish; Precincts 101, 102, 103, 104, 105, 106,
 25 107, 201, 202, 203, 204, 205, 206, 207, 301, 302, 303, 304, 305, 306, 307, 308, 309, 310,
 26 311, 312, 313, 401, 402, 403, 404, 405, 406, 407, 408, 409, 410, 411, 412, 413, 414, 415,
 27 416, 417, 418, 419, 420, 421, 422, 423, 424, 426, 427, 501, 502, 503, 504, 505, 601, 602,
 28 603, 604, 605, 606, 607, 701, 702, 703, 706, 801, 802, 803, 804, 805, 806, 807, 808, 809,
 29 810, 811, 812, 813, 814, 815, 816, 817, 901, 902, 903, 904, 905, 906, 907, 912, 913, 914,
 30 915, 916, 918, A01, A02, A03, A04, C01, C02, C03, C04, C05, C06, C07, C08, C09, C10,
 31 C11, F01, M01, M02, M03, M04, M05, M06, M07, M08, M09, M10, MD1, P01, S01, S02,
 32 S03, S04, S05, S06, S07, S08, S09, S10, S11, S12, S13, S15, S16, S17, S19, S21, S23, S24
 33 and S25 of St. Tammany Parish; Precincts 27, 28, 28A, 33, 40, 40A, 41, 42, 42A, 43, 44, 45,
 34 45A, 46, 47, 48, 49, 70, 70A, 71, 72, 72A, 73, 74, 102, 104, 104A, 106, 106A, 108, 110, 112,
 35 114, 115B, 116, 117, 118, 119, 120, 120A, 120B, 121, 121A, 121B, 122, 122A, 123, 124,
 36 125, 127, 127A, 129, 129A, 133, 133A, 137, 137A, 137B, 137C, 137D, 139, 141, 141A, 143,
 37 145, 149, 149A and 151 of Tangipahoa Parish and Washington Parish.”

Plan Statistics

<u>Districts:</u>	<u># of Members</u>	<u>Actual Population</u>	<u>Ideal Population</u>	<u>Absolute Deviation</u>	<u>Relative Deviation</u>
District 1	1	755,565	755,562	3	0.000%
District 2	1	755,532	755,562	-30	-0.004%
District 3	1	755,616	755,562	54	0.007%
District 4	1	755,589	755,562	27	0.004%
District 5	1	755,558	755,562	-4	-0.001%
District 6	1	755,512	755,562	-50	-0.007%
Grand Total:	6	4,533,372	4,533,372		

Ideal Population Per Member:	755562	
Number of Districts for Plan Type:	6	
Range of District Populations:	755,512	to 755,616
Absolute Mean Deviation:	17	
Absolute Range:	-50	to 54
Absolute Overall Range:	104	
Relative Mean Deviation:	0.00%	
Relative Range:	-0.01%	to 0.01%
Relative Overall Range:	0.02%	

<i>Ideal - Actual:</i>	0
<i>Remainder:</i>	0
<i>Unassigned Population:</i>	0

Total Population

	Total Population	Total White	Total Black	Total Asian	Total American Indian	Total Other	Total Hispanic	Reg Total Jan 2011
District 1	755,565	577,499	115,519	20,704	16,199	25,644	63,310	435,891
	100.000%	76.433%	15.289%	2.740%	2.144%	3.394%	8.379%	74.862%
District 2	755,532	273,845	441,980	18,607	4,574	16,526	36,087	469,510
	100.000%	36.245%	58.499%	2.463%	0.605%	2.187%	4.776%	82.915%
District 3	755,616	570,353	153,377	10,722	10,141	11,023	23,954	442,980
	100.000%	75.482%	20.298%	1.419%	1.342%	1.459%	3.170%	78.546%
District 4	755,589	486,782	244,820	8,517	6,209	9,261	21,403	442,595
	100.000%	64.424%	32.401%	1.127%	0.822%	1.226%	2.833%	77.308%
District 5	755,558	317,282	415,485	10,582	3,914	8,295	18,287	438,376
	100.000%	41.993%	54.990%	1.401%	0.518%	1.098%	2.420%	77.616%
District 6	755,512	610,431	115,704	12,419	5,516	11,442	29,519	451,023
	100.000%	80.797%	15.315%	1.644%	0.730%	1.514%	3.907%	79.749%
Grand Total	4,533,372	2,836,192	1,486,885	81,551	46,553	82,191	192,560	2,680,375
	100.000%	62.563%	32.799%	1.799%	1.027%	1.813%	4.248%	78.480%

Voter Registration

	Reg Total Jan 2011	Reg White Jan 2011	Reg Black Jan 2011	Reg Other Jan 2011	Reg Dem Total Jan 2011	Reg Rep Total Jan 2011	Reg Other Total Jan 2011
District 1	435,891	354,972	51,426	29,493	184,711	139,262	111,918
	74.862%	81.436%	11.798%	6.766%	42.376%	31.949%	25.676%
District 2	469,510	178,236	265,921	25,353	305,325	65,888	98,297
	82.915%	37.962%	56.638%	5.400%	65.031%	14.033%	20.936%
District 3	442,980	350,335	77,505	15,140	220,049	118,703	104,228
	78.546%	79.086%	17.496%	3.418%	49.675%	26.796%	23.529%
District 4	442,595	300,805	128,101	13,689	205,996	140,471	96,128
	77.308%	67.964%	28.943%	3.093%	46.543%	31.738%	21.719%
District 5	438,376	199,381	226,752	12,243	275,512	78,549	84,315
	77.616%	45.482%	51.725%	2.793%	62.848%	17.918%	19.233%
District 6	451,023	377,388	54,372	19,263	163,393	175,317	112,313
	79.749%	83.674%	12.055%	4.271%	36.227%	38.871%	24.902%
Grand Total	2,680,375	1,761,117	804,077	115,181	1,354,986	718,190	607,199

Splits

	Total Population	Total White	Total Black	Total Asian	Total American Indian	Total Other	VAP Total	VAP White	VAP Black	VAP Asian	VAP American Indian	VAP Other	Reg Total Jan 2011	Reg White Jan 2011	Reg Black Jan 2011	Reg Other Jan 2011
District 1																
*Assumption	3,095	2,759	142	31	69	94	2,317	2,098	89	23	48	59	1,666	1,587	28	51
*Iberia	19,530	15,486	2,581	819	185	459	14,477	11,709	1,739	542	139	348	11,369	9,760	1,217	392
*Jefferson	299,765	229,971	40,430	11,805	2,511	15,048	238,153	187,543	28,434	8,986	1,874	11,316	176,402	144,712	16,006	15,684
*Lafayette	18,451	16,236	1,623	285	131	176	12,934	11,495	1,058	179	88	114	10,953	9,703	828	422
Lafourche	96,318	76,445	13,363	855	3,457	2,198	72,652	59,362	8,945	612	2,187	1,546	53,711	45,827	6,316	1,568
*Orleans	56,606	46,948	6,233	1,990	310	1,125	47,569	39,799	4,955	1,663	245	907	36,417	29,686	3,411	3,320
Plaquemines	23,042	16,246	4,951	844	556	445	16,713	12,086	3,367	583	396	281	14,534	10,541	3,075	918
St. Bernard	35,897	26,579	6,705	873	522	1,218	26,720	20,490	4,338	640	370	882	23,358	19,332	2,829	1,197
*St. Charles	28,203	20,244	6,824	364	184	587	20,495	15,072	4,630	226	139	428	16,685	12,497	3,357	831
*St. Martin	1,228	1,190	10	8	15	5	982	960	4	6	9	3	811	794	0	17
*St. Mary	35,414	24,340	8,067	914	614	1,479	26,408	18,716	5,550	666	433	1,043	15,425	11,739	2,974	712
*St. Tammany	14,175	11,773	1,647	407	148	200	11,457	9,748	1,155	292	116	146	8,291	7,081	662	548
Terrebonne	111,860	78,591	22,072	1,333	7,375	2,489	82,737	60,621	14,647	986	4,725	1,758	59,299	45,337	10,268	3,694
*Vermilion	11,981	10,691	871	176	122	121	8,646	7,803	548	129	77	89	6,970	6,376	455	139
District 1	755,565	577,499	115,519	20,704	16,199	25,644	582,260	457,502	79,459	15,533	10,846	18,920	435,891	354,972	51,426	29,493
	100.000%	76.433%	15.289%	2.740%	2.144%	3.394%	100.000%	78.573%	13.647%	2.668%	1.863%	3.249%	74.862%	81.436%	11.798%	6.766%
District 2																
*Assumption	20,326	12,876	7,108	37	121	184	15,348	10,098	5,010	28	77	135	13,122	8,506	4,558	58
*Iberia	53,710	30,065	21,510	1,107	243	785	38,921	23,428	14,015	766	168	544	33,770	20,256	12,700	814
*Jefferson	132,787	42,144	76,569	6,838	891	6,345	97,002	33,730	52,868	5,124	615	4,665	75,675	24,415	44,127	7,133
*Lafayette	62,651	25,651	35,552	319	334	795	46,218	20,749	24,396	233	248	592	38,804	16,595	20,870	1,339
*Orleans	287,223	66,480	204,214	8,961	1,386	6,182	223,045	59,881	149,739	7,177	1,154	5,094	175,355	40,750	122,237	12,368
*St. Charles	24,577	16,296	7,571	211	187	312	18,077	12,373	5,238	131	124	211	15,020	10,416	4,097	507
St. James	22,102	10,615	11,290	43	52	102	16,401	8,231	8,039	26	41	64	14,703	7,249	7,260	194
St. John the Baptist	45,924	19,501	24,944	414	237	828	33,568	15,408	17,127	290	164	579	27,785	12,466	14,265	1,054
*St. Landry	53,588	23,379	29,119	272	267	551	38,849	18,165	19,896	191	186	411	37,072	16,582	19,777	713
*St. Martin	33,408	18,772	13,880	261	201	294	24,488	14,568	9,426	170	130	194	21,784	12,668	8,477	639
*St. Mary	19,236	8,066	10,223	144	655	148	14,338	6,475	7,247	107	404	105	16,420	8,333	7,553	534
District 2	755,532	273,845	441,980	18,607	4,574	16,526	566,255	223,106	313,001	14,243	3,311	12,594	469,510	178,236	265,921	25,353
	100.000%	36.245%	58.499%	2.463%	0.605%	2.187%	100.000%	39.400%	55.276%	2.515%	0.585%	2.224%	82.915%	37.962%	56.638%	5.400%
District 3																
Acadia	61,773	49,127	11,645	196	313	492	44,910	36,554	7,668	131	213	344	37,256	30,346	6,441	469
Allen	25,764	18,435	6,192	220	749	168	19,870	14,288	4,828	154	495	105	13,110	10,190	2,397	523
Beauregard	35,654	29,321	5,016	353	652	312	26,359	21,902	3,569	239	460	189	19,924	16,703	2,304	917
Calcasieu	192,768	136,514	49,825	2,550	1,626	2,253	143,756	105,077	34,139	1,846	1,187	1,507	117,844	86,021	27,975	3,848

Splits

	Total Population	Total White	Total Black	Total Asian	Total American Indian	Total Other	VAP Total	VAP White	VAP Black	VAP Asian	VAP American Indian	VAP Other	Reg Total Jan 2011	Reg White Jan 2011	Reg Black Jan 2011	Reg Other Jan 2011
District 3																
Cameron	6,839	6,546	135	10	60	88	5,183	5,011	74	9	38	51	5,536	5,272	188	76
Evangeline	33,984	23,439	9,862	139	161	383	24,817	17,619	6,661	97	117	323	21,407	15,267	5,973	167
Jefferson Davis	31,594	25,125	5,836	98	275	260	23,196	18,871	3,891	66	180	188	19,337	15,808	3,132	397
*Lafayette	140,476	111,819	21,737	3,287	825	2,808	108,163	88,322	14,749	2,472	615	2,005	81,367	69,334	8,457	3,576
*Natchitoches	27,018	13,221	12,911	103	481	302	20,363	10,614	9,071	79	363	236	15,071	7,795	6,628	648
*Rapides	33,713	28,067	3,301	834	675	836	25,486	21,561	2,276	595	512	542	20,959	18,507	1,553	899
Sabine	24,233	17,155	4,234	84	2,636	124	18,311	13,544	2,835	63	1,796	73	13,837	10,811	2,032	994
*St. Landry	25,924	21,388	4,080	115	123	218	18,946	15,987	2,672	73	81	133	16,675	14,021	2,348	306
*St. Martin	17,524	14,351	2,507	209	134	323	12,919	10,792	1,660	140	88	239	11,254	9,404	1,409	441
*Vermilion	46,018	36,231	7,783	1,098	254	652	33,876	27,621	4,909	773	182	391	27,783	22,975	4,173	635
Vernon	52,334	39,614	8,313	1,426	1,177	1,804	37,822	29,416	5,349	1,026	848	1,183	21,620	17,881	2,495	1,244
District 3	755,616	570,353	153,377	10,722	10,141	11,023	563,977	437,179	104,351	7,763	7,175	7,509	442,980	350,335	77,505	15,140
	100.000%	75.482%	20.298%	1.419%	1.342%	1.459%	100.000%	77.517%	18.503%	1.376%	1.272%	1.331%	78.546%	79.086%	17.496%	3.418%
District 4																
Bienville	14,353	7,935	6,153	44	132	89	11,012	6,279	4,544	31	105	53	9,256	5,112	4,085	59
Bossier	116,979	84,430	25,606	2,516	1,139	3,288	86,945	64,692	17,413	1,836	837	2,167	60,834	46,663	11,491	2,680
Caddo	254,969	124,942	122,229	3,230	1,906	2,662	192,315	100,748	85,902	2,363	1,455	1,847	151,374	79,163	66,708	5,503
*Caldwell	8,783	7,012	1,648	30	48	45	6,704	5,368	1,242	23	39	32	5,397	4,556	790	51
*Catahoula	3,153	2,984	130	1	32	6	2,441	2,321	93	1	23	3	2,203	2,132	61	10
Claiborne	17,195	8,167	8,820	62	99	47	13,815	6,781	6,889	37	80	28	8,877	4,908	3,872	97
De Soto	26,656	15,456	10,600	54	331	215	20,006	12,055	7,495	42	273	141	16,396	9,663	6,191	542
*Franklin	3,626	3,279	302	8	26	11	2,747	2,488	226	5	21	7	2,416	2,200	199	17
*Grant	20,346	17,650	2,143	95	383	75	15,728	13,382	1,958	65	273	50	10,565	10,043	288	234
Jackson	16,274	11,084	4,947	67	83	93	12,570	8,681	3,724	39	65	61	9,846	6,879	2,805	162
La Salle	14,890	12,689	1,808	40	215	138	11,366	9,677	1,402	35	143	109	8,427	7,648	621	158
Lincoln	46,735	25,775	19,184	874	230	672	37,130	20,875	14,821	749	183	502	24,016	14,604	8,519	893
*Morehouse	7,089	6,034	948	46	25	36	5,536	4,757	704	33	21	21	5,098	4,258	742	98
*Natchitoches	12,548	8,273	3,867	94	168	146	9,603	6,612	2,700	72	114	105	7,911	5,386	2,250	275
*Ouachita	72,305	65,362	5,097	879	396	571	53,805	49,201	3,354	574	304	372	46,962	43,125	2,259	1,578
*Rapides	20,785	19,253	1,004	149	280	99	15,164	14,172	603	109	207	73	12,800	12,014	394	392
Red River	9,091	5,360	3,633	16	43	39	6,778	4,256	2,450	12	34	26	5,981	3,566	2,377	38
Union	22,721	15,682	6,242	49	115	633	17,493	12,568	4,439	31	91	364	14,964	10,863	3,709	392
Webster	41,207	26,469	14,044	180	316	198	31,497	20,907	10,110	120	241	119	23,913	16,115	7,416	382
*West Carroll	10,571	8,723	1,638	30	75	105	7,986	6,661	1,179	22	55	69	6,467	5,497	918	52
Winn	15,313	10,223	4,777	53	167	93	11,871	8,018	3,619	44	129	61	8,892	6,410	2,406	76

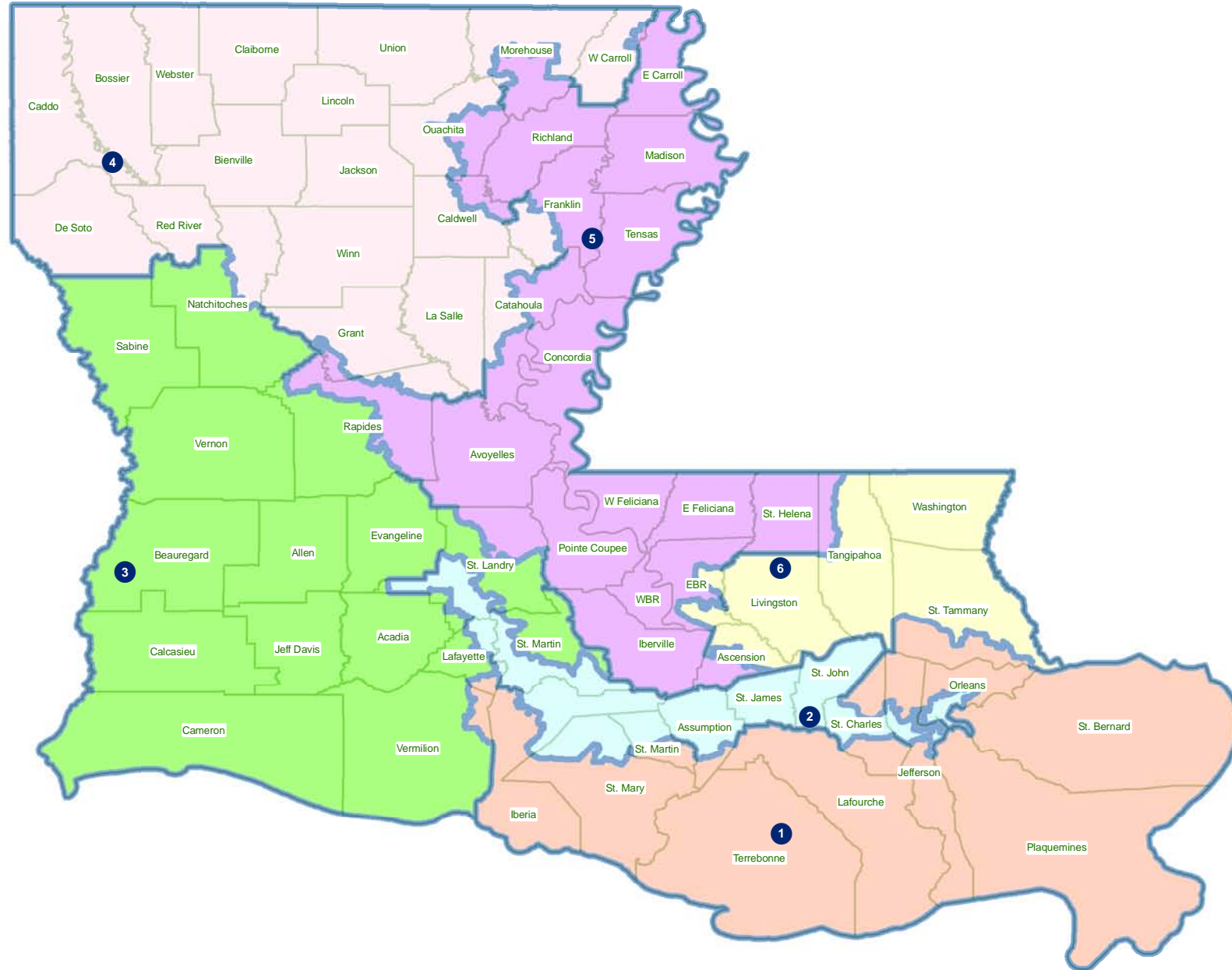
Splits

	Total Population	Total White	Total Black	Total Asian	Total American Indian	Total Other	VAP Total	VAP White	VAP Black	VAP Asian	VAP American Indian	VAP Other	Reg Total Jan 2011	Reg White Jan 2011	Reg Black Jan 2011	Reg Other Jan 2011
District 4	755,589	486,782	244,820	8,517	6,209	9,261	572,512	380,499	174,867	6,243	4,693	6,210	442,595	300,805	128,101	13,689
	100.000%	64.424%	32.401%	1.127%	0.822%	1.226%	100.000%	66.461%	30.544%	1.090%	0.820%	1.085%	77.308%	67.964%	28.943%	3.093%
District 5																
*Ascension	28,853	11,940	15,865	190	117	741	21,139	9,572	10,855	149	87	476	17,768	7,988	9,188	592
Avoyelles	42,073	28,188	12,876	174	641	194	31,790	21,850	9,247	126	431	136	23,105	16,874	5,790	441
*Caldwell	1,349	1,201	130	0	16	2	1,054	946	94	0	12	2	927	795	121	11
*Catahoula	7,254	4,001	3,188	8	21	36	5,616	3,222	2,345	7	20	22	4,177	2,617	1,535	25
Concordia	20,822	11,959	8,604	59	123	77	15,589	9,298	6,117	41	88	45	12,696	7,997	4,529	170
*East Baton Rouge	263,323	78,222	171,879	7,513	1,036	4,673	195,708	66,089	119,384	5,931	812	3,492	139,772	44,972	89,303	5,497
East Carroll	7,759	2,245	5,398	47	31	38	5,766	1,845	3,830	37	25	29	5,330	1,617	3,664	49
East Feliciana	20,267	10,783	9,250	67	127	40	16,075	8,775	7,123	58	94	25	13,411	7,629	5,126	656
*Franklin	17,141	10,651	6,318	57	56	59	12,703	8,350	4,245	37	42	29	11,050	7,208	3,779	63
*Grant	1,963	499	1,459	2	2	1	1,430	406	1,020	2	1	1	1,335	318	996	21
Iberville	33,387	16,280	16,620	124	117	246	25,885	13,254	12,258	85	98	190	20,452	10,414	9,754	284
Madison	12,093	4,498	7,452	33	55	55	9,071	3,644	5,312	20	45	50	7,634	2,780	4,764	90
*Morehouse	20,890	8,311	12,333	96	77	73	15,525	6,826	8,526	69	58	46	13,583	5,790	7,587	206
*Ouachita	81,415	27,522	52,097	843	309	644	59,542	23,115	35,051	674	245	457	47,446	16,820	28,738	1,888
Pointe Coupee	22,802	14,010	8,427	69	71	225	17,327	11,073	6,020	44	57	133	15,464	9,584	5,696	184
*Rapides	77,115	36,053	38,845	929	727	561	56,949	28,846	26,489	673	551	390	44,297	22,807	20,160	1,330
Richland	20,725	12,879	7,544	92	96	114	15,440	9,999	5,237	65	70	69	12,939	8,173	4,646	120
St. Helena	11,203	5,034	6,014	16	72	67	8,440	4,036	4,291	11	60	42	8,432	3,816	4,517	99
*St. Landry	3,872	1,848	1,954	8	16	46	2,909	1,441	1,429	2	11	26	2,802	1,298	1,466	38
*Tangipahoa	15,554	5,786	9,560	82	58	68	11,393	4,668	6,575	54	45	51	9,333	3,865	5,249	219
Tensas	5,252	2,202	2,991	13	15	31	3,923	1,796	2,085	11	9	22	4,131	1,807	2,304	20
West Baton Rouge	23,788	14,271	9,132	114	85	186	17,861	11,067	6,517	92	67	118	14,796	9,244	5,408	144
*West Carroll	1,033	774	232	4	11	12	760	593	151	2	7	7	700	520	178	2
West Feliciana	15,625	8,125	7,317	42	35	106	12,907	6,412	6,364	24	33	74	6,796	4,448	2,254	94
District 5	755,558	317,282	415,485	10,582	3,914	8,295	564,802	257,123	290,565	8,214	2,968	5,932	438,376	199,381	226,752	12,243
	100.000%	41.993%	54.990%	1.401%	0.518%	1.098%	100.000%	45.524%	51.445%	1.454%	0.525%	1.050%	77.616%	45.482%	51.725%	2.793%
District 6																
*Ascension	78,362	66,632	8,601	1,044	469	1,616	55,321	47,765	5,556	667	325	1,008	46,336	40,244	4,068	2,024
*East Baton Rouge	176,848	136,705	30,655	6,051	877	2,560	140,798	111,786	21,912	4,540	674	1,886	112,845	93,179	14,507	5,159
Livingston	128,026	117,601	6,941	906	1,055	1,523	92,696	85,855	4,535	565	782	959	71,580	66,508	2,985	2,087
*St. Tammany	219,565	183,591	26,802	3,400	2,034	3,738	162,147	138,216	17,597	2,278	1,463	2,593	135,323	114,770	12,833	7,720
*Tangipahoa	105,543	74,420	27,821	873	776	1,653	79,284	58,463	18,484	656	586	1,095	59,331	44,714	12,740	1,877
Washington	47,168	31,482	14,884	145	305	352	35,305	24,363	10,374	101	238	229	25,608	17,973	7,239	396

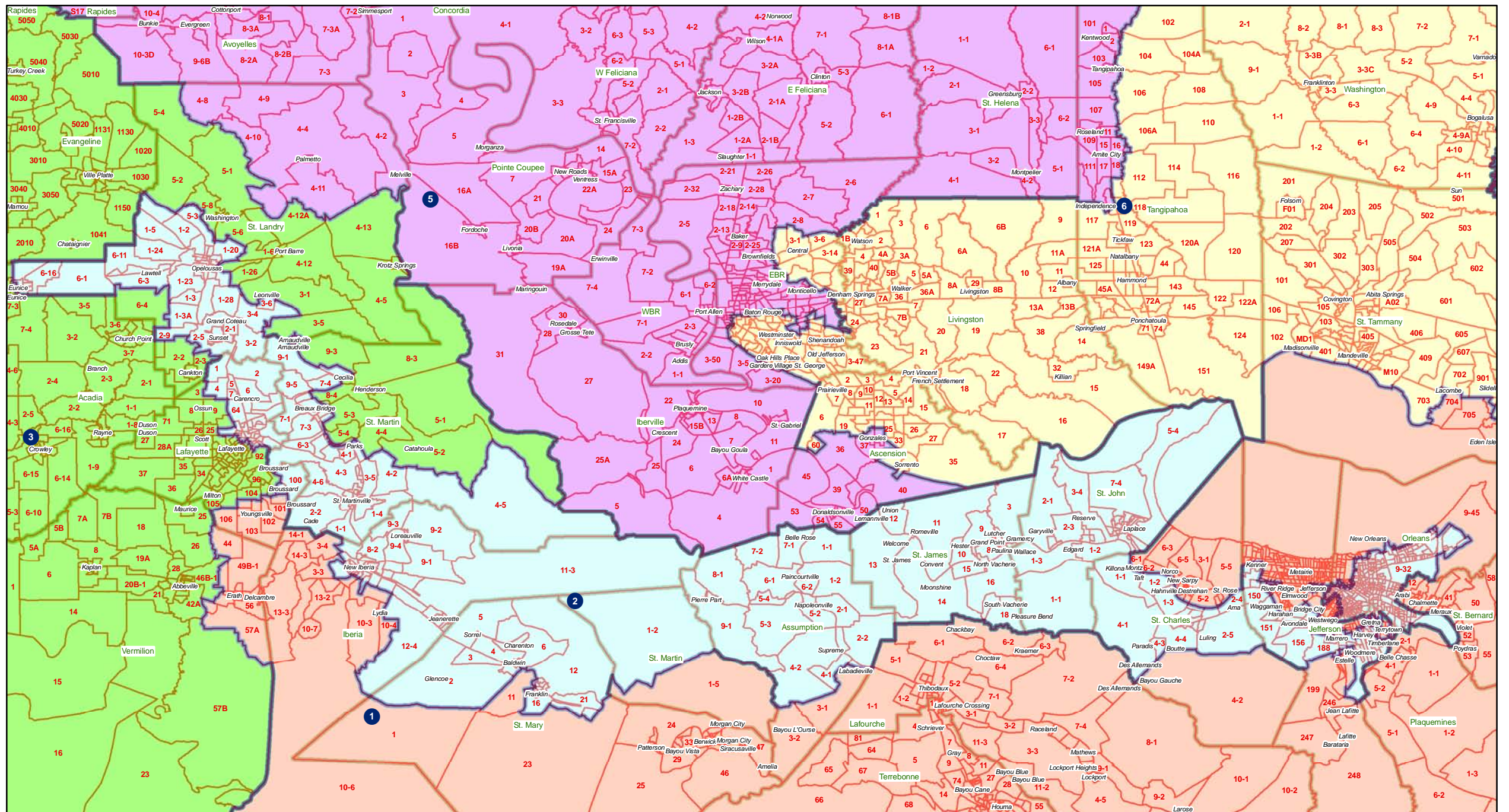
Splits

	Total Population	Total White	Total Black	Total Asian	Total American Indian	Total Other	VAP Total	VAP White	VAP Black	VAP Asian	VAP American Indian	VAP Other	Reg Total Jan 2011	Reg White Jan 2011	Reg Black Jan 2011	Reg Other Jan 2011
District 6	755,512 100.000%	610,431 80.797%	115,704 15.315%	12,419 1.644%	5,516 0.730%	11,442 1.514%	565,551 100.000%	466,448 82.477%	78,458 13.873%	8,807 1.557%	4,068 0.719%	7,770 1.374%	451,023 79.749%	377,388 83.674%	54,372 12.055%	19,263 4.271%

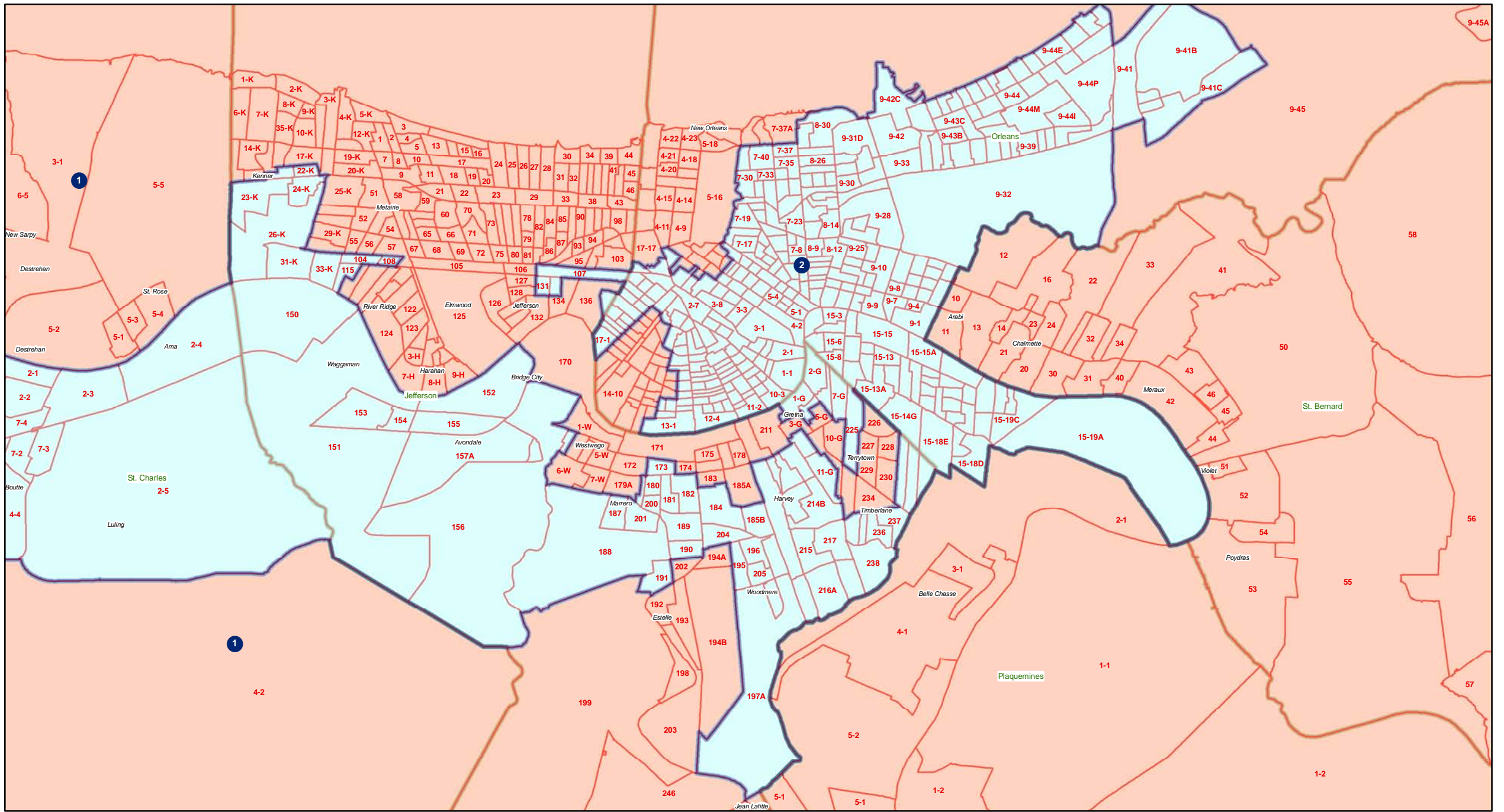
Congress - Statewide



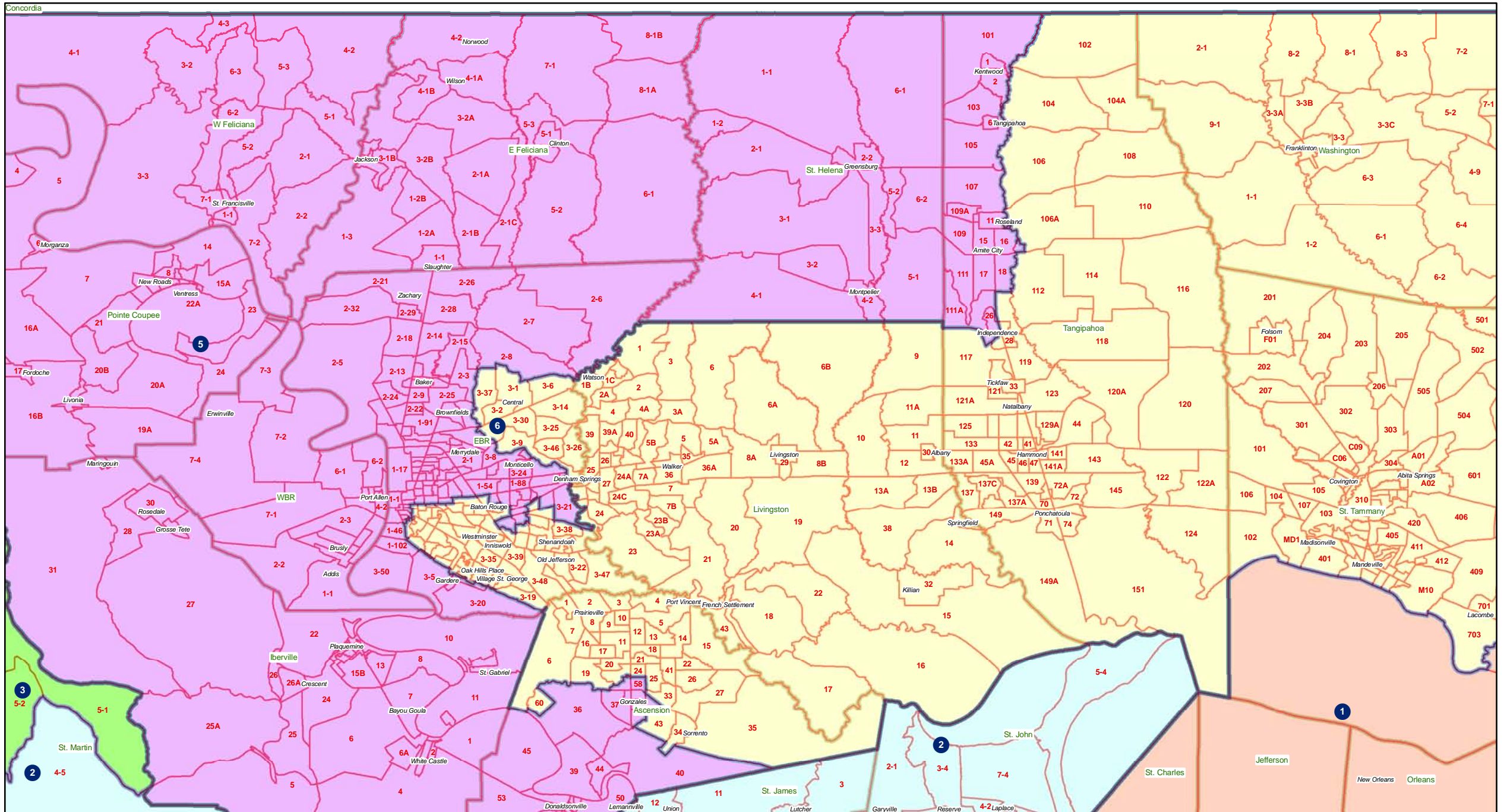
Congress - River area



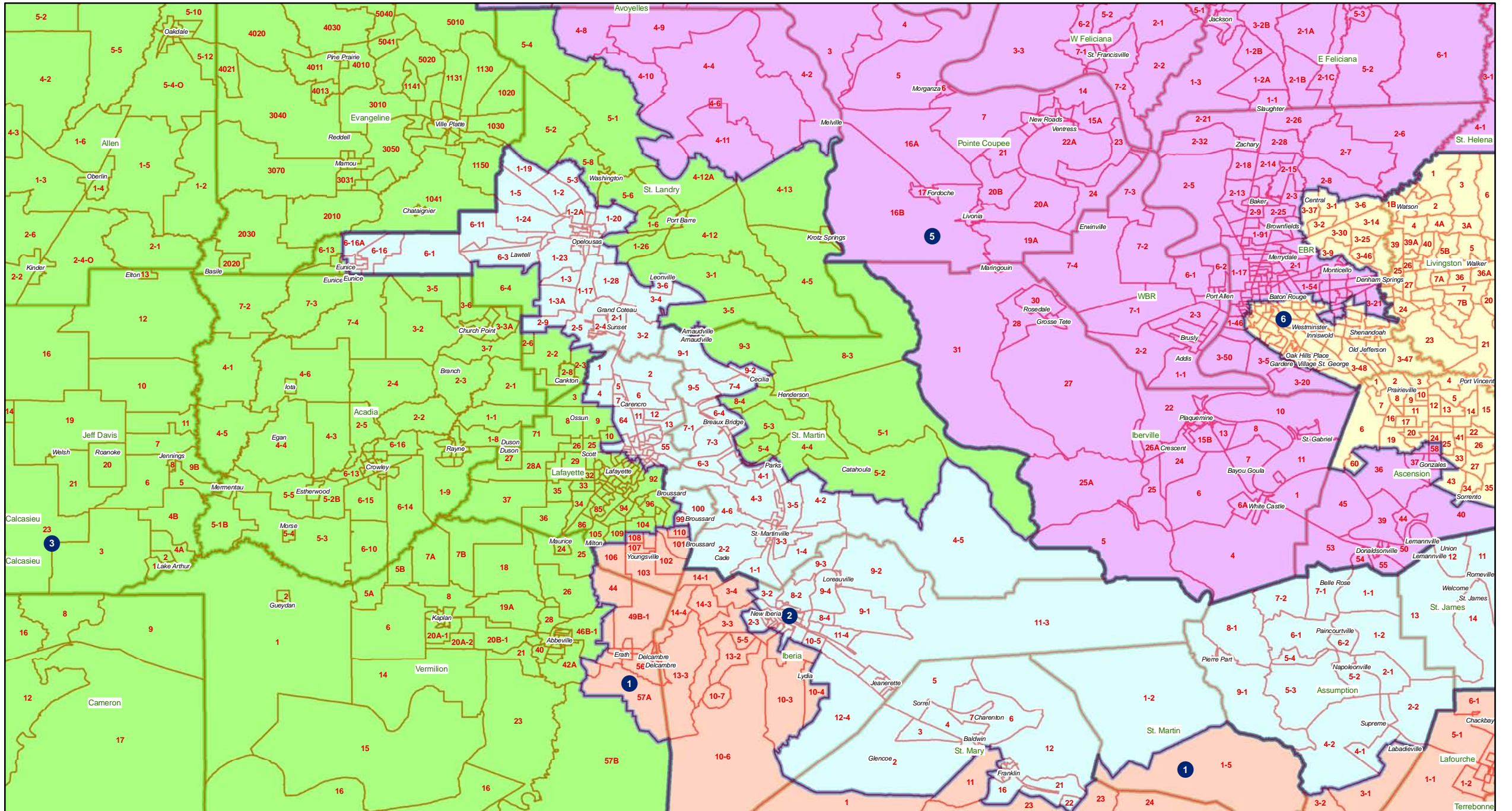
Congress - Jefferson - Orleans



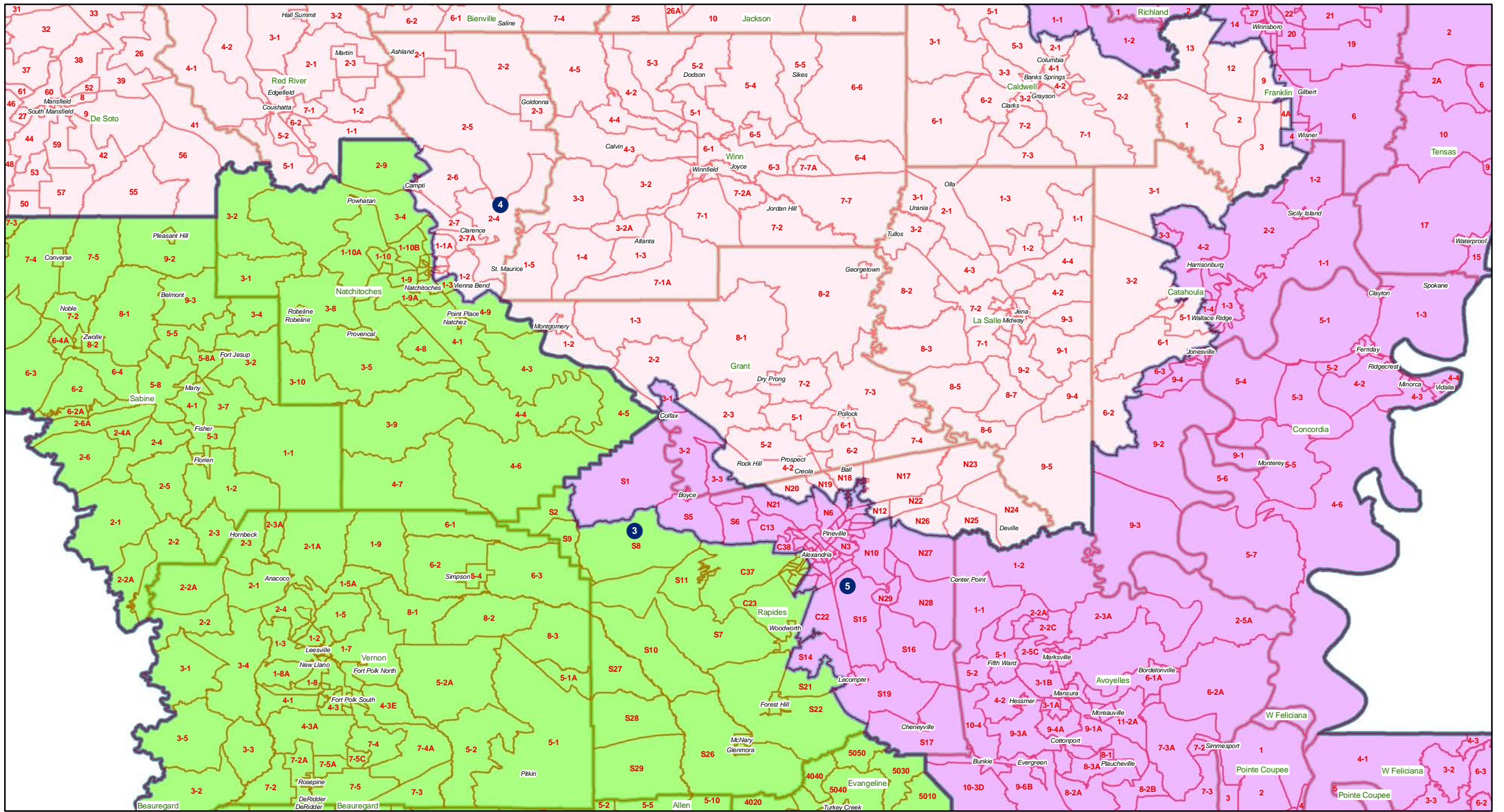
Congress - East Baton Rouge - Ascension - Tangipahoa



Congress - St. Landry - St. Martin - Lafayette - Vermilion- Iberia -Terrebonne - Assumption



Congress - Central



Congress - Northeast

