

## Plan Statistics

<u>Districts:</u>	<u># of Members</u>	<u>Actual Population</u>	<u>Ideal Population</u>	<u>Absolute Deviation</u>	<u>Relative Deviation</u>
District 1	1	755,557	755,562	-5	-0.001%
District 2	1	755,538	755,562	-24	-0.003%
District 3	1	755,596	755,562	34	0.004%
District 4	1	755,605	755,562	43	0.006%
District 5	1	755,581	755,562	19	0.003%
District 6	1	755,495	755,562	-67	-0.009%
<b>Grand Total:</b>	<b>6</b>	<b>4,533,372</b>	<b>4,533,372</b>		

Ideal Population Per Member:	755562		
Number of Districts for Plan Type:	6		
Range of District Populations:	755,495	to	755,605
Absolute Mean Deviation:	18		
Absolute Range:	-67	to	43
Absolute Overall Range:	110		
Relative Mean Deviation:	0.00%		
Relative Range:	-0.01%	to	0.01%
Relative Overall Range:	0.02%		

<b><i>Ideal - Actual:</i></b>	<b>0</b>
<b><i>Remainder:</i></b>	<b>0</b>
<b><i>Unassigned Population:</i></b>	<b>0</b>

# Total Population

	Total Population	Total White	Total Black	Total Asian	Total American Indian	Total Other	Total Hispanic	Reg Total Jan 2011
District 1	755,557	598,443	104,671	16,848	15,103	20,492	52,377	449,535
	100.000%	79.206%	13.853%	2.230%	1.999%	2.712%	6.932%	77.680%
District 2	755,538	236,430	475,543	20,562	4,039	18,964	43,372	448,947
	100.000%	31.293%	62.941%	2.722%	0.535%	2.510%	5.741%	78.818%
District 3	755,596	532,798	194,139	11,486	6,003	11,170	23,014	458,419
	100.000%	70.514%	25.693%	1.520%	0.794%	1.478%	3.046%	81.614%
District 4	755,605	462,166	263,408	8,765	10,324	10,942	24,176	432,023
	100.000%	61.165%	34.861%	1.160%	1.366%	1.448%	3.200%	76.217%
District 5	755,581	466,461	271,034	6,127	5,780	6,179	15,321	450,681
	100.000%	61.735%	35.871%	0.811%	0.765%	0.818%	2.028%	79.392%
District 6	755,495	539,894	178,090	17,763	5,304	14,444	34,300	440,770
	100.000%	71.462%	23.573%	2.351%	0.702%	1.912%	4.540%	77.210%
Grand Total	4,533,372	2,836,192	1,486,885	81,551	46,553	82,191	192,560	2,680,375
	100.000%	62.563%	32.799%	1.799%	1.027%	1.813%	4.248%	78.480%

# Voter Registration

	Reg Total Jan 2011	Reg White Jan 2011	Reg Black Jan 2011	Reg Other Jan 2011	Reg Dem Total Jan 2011	Reg Rep Total Jan 2011	Reg Other Total Jan 2011
District 1	449,535	374,732	46,425	28,378	168,233	166,171	115,131
	77.680%	83.360%	10.327%	6.313%	37.424%	36.965%	25.611%
District 2	448,947	144,721	276,668	27,558	302,120	51,268	95,559
	78.818%	32.236%	61.626%	6.138%	67.295%	11.420%	21.285%
District 3	458,419	336,889	107,033	14,497	229,704	120,787	107,928
	81.614%	73.489%	23.348%	3.162%	50.108%	26.349%	23.544%
District 4	432,023	276,373	140,630	15,020	221,287	118,015	92,721
	76.217%	63.972%	32.552%	3.477%	51.221%	27.317%	21.462%
District 5	450,681	294,830	144,744	11,107	239,963	117,624	93,094
	79.392%	65.419%	32.117%	2.464%	53.245%	26.099%	20.656%
District 6	440,770	333,572	88,577	18,621	193,679	144,325	102,766
	77.210%	75.679%	20.096%	4.225%	43.941%	32.744%	23.315%
<b>Grand Total</b>	<b>2,680,375</b>	<b>1,761,117</b>	<b>804,077</b>	<b>115,181</b>	<b>1,354,986</b>	<b>718,190</b>	<b>607,199</b>

## Splits

	Total Population	Total White	Total Black	Total Asian	Total American Indian	Total Other	VAP Total	VAP White	VAP Black	VAP Asian	VAP American Indian	VAP Other	Reg Total Jan 2011	Reg White Jan 2011	Reg Black Jan 2011	Reg Other Jan 2011
District 1																
*Jefferson	207,543	168,466	20,611	7,667	1,523	9,276	166,700	137,889	14,695	5,862	1,150	7,104	125,108	108,102	7,119	9,887
*Lafourche	49,760	41,430	3,305	475	2,830	1,720	37,318	31,949	2,019	330	1,794	1,226	26,459	24,325	1,235	899
*Orleans	41,766	36,574	2,981	1,322	209	680	34,977	30,789	2,375	1,107	164	542	27,555	23,712	1,298	2,545
Plaquemines	23,042	16,246	4,951	844	556	445	16,713	12,086	3,367	583	396	281	14,534	10,541	3,075	918
St. Bernard	35,897	26,579	6,705	873	522	1,218	26,720	20,490	4,338	640	370	882	23,358	19,332	2,829	1,197
St. Tammany	233,740	195,364	28,449	3,807	2,182	3,938	173,604	147,964	18,752	2,570	1,579	2,739	143,614	121,851	13,495	8,268
*Tangipahoa	72,728	49,146	21,421	721	475	965	55,197	39,317	14,305	547	361	667	40,635	29,409	9,845	1,381
*Terrebonne	91,081	64,638	16,248	1,139	6,806	2,250	67,470	49,944	10,731	844	4,361	1,590	48,272	37,460	7,529	3,283
District 1	755,557	598,443	104,671	16,848	15,103	20,492	578,699	470,428	70,582	12,483	10,175	15,031	449,535	374,732	46,425	28,378
	100.000%	79.206%	13.853%	2.230%	1.999%	2.712%	100.000%	81.291%	12.197%	2.157%	1.758%	2.597%	77.680%	83.360%	10.327%	6.313%
District 2																
*Ascension	20,312	6,464	13,272	116	65	395	14,646	5,200	9,055	92	48	251	12,296	4,183	7,799	314
*Assumption	7,637	3,231	4,322	15	20	49	5,682	2,574	3,044	10	13	41	4,861	2,092	2,745	24
*East Baton Rouge	102,184	6,283	94,676	414	232	579	73,504	5,657	66,901	334	179	433	59,047	3,719	53,579	1,749
*Iberville	23,326	9,305	13,707	88	59	167	18,044	7,711	10,098	61	50	124	13,342	5,439	7,706	197
*Jefferson	199,994	86,163	92,420	9,661	1,707	10,043	148,845	69,210	63,850	7,230	1,203	7,352	113,417	51,538	51,329	10,550
*Orleans	302,063	76,854	207,466	9,629	1,487	6,627	235,637	68,891	152,319	7,733	1,235	5,459	184,217	46,724	124,350	13,143
*St. Charles	33,730	21,415	11,294	330	247	444	24,648	16,154	7,817	203	167	307	20,151	13,553	5,891	707
St. James	22,102	10,615	11,290	43	52	102	16,401	8,231	8,039	26	41	64	14,703	7,249	7,260	194
*St. John the Baptist	33,564	11,307	21,438	207	135	477	24,335	9,007	14,773	135	99	321	20,184	7,059	12,492	633
*West Baton Rouge	10,626	4,793	5,658	59	35	81	7,859	3,756	3,973	51	28	51	6,729	3,165	3,517	47
District 2	755,538	236,430	475,543	20,562	4,039	18,964	569,601	196,391	339,869	15,875	3,063	14,403	448,947	144,721	276,668	27,558
	100.000%	31.293%	62.941%	2.722%	0.535%	2.510%	100.000%	34.479%	59.668%	2.787%	0.538%	2.529%	78.818%	32.236%	61.626%	6.138%
District 3																
Acadia	61,773	49,127	11,645	196	313	492	44,910	36,554	7,668	131	213	344	37,256	30,346	6,441	469
Calcasieu	192,768	136,514	49,825	2,550	1,626	2,253	143,756	105,077	34,139	1,846	1,187	1,507	117,844	86,021	27,975	3,848
Cameron	6,839	6,546	135	10	60	88	5,183	5,011	74	9	38	51	5,536	5,272	188	76
Iberia	73,240	45,551	24,091	1,926	428	1,244	53,398	35,137	15,754	1,308	307	892	45,139	30,016	13,917	1,206
Jefferson Davis	31,594	25,125	5,836	98	275	260	23,196	18,871	3,891	66	180	188	19,337	15,808	3,132	397
Lafayette	221,578	153,706	58,912	3,891	1,290	3,779	167,315	120,566	40,203	2,884	951	2,711	131,124	95,632	30,155	5,337
*St. Landry	2,995	2,588	354	5	16	32	2,275	1,986	261	3	11	14	1,736	1,505	184	47
St. Martin	52,160	34,313	16,397	478	350	622	38,389	26,320	11,090	316	227	436	33,849	22,866	9,886	1,097
St. Mary	54,650	32,406	18,290	1,058	1,269	1,627	40,746	25,191	12,797	773	837	1,148	31,845	20,072	10,527	1,246
Vermilion	57,999	46,922	8,654	1,274	376	773	42,522	35,424	5,457	902	259	480	34,753	29,351	4,628	774

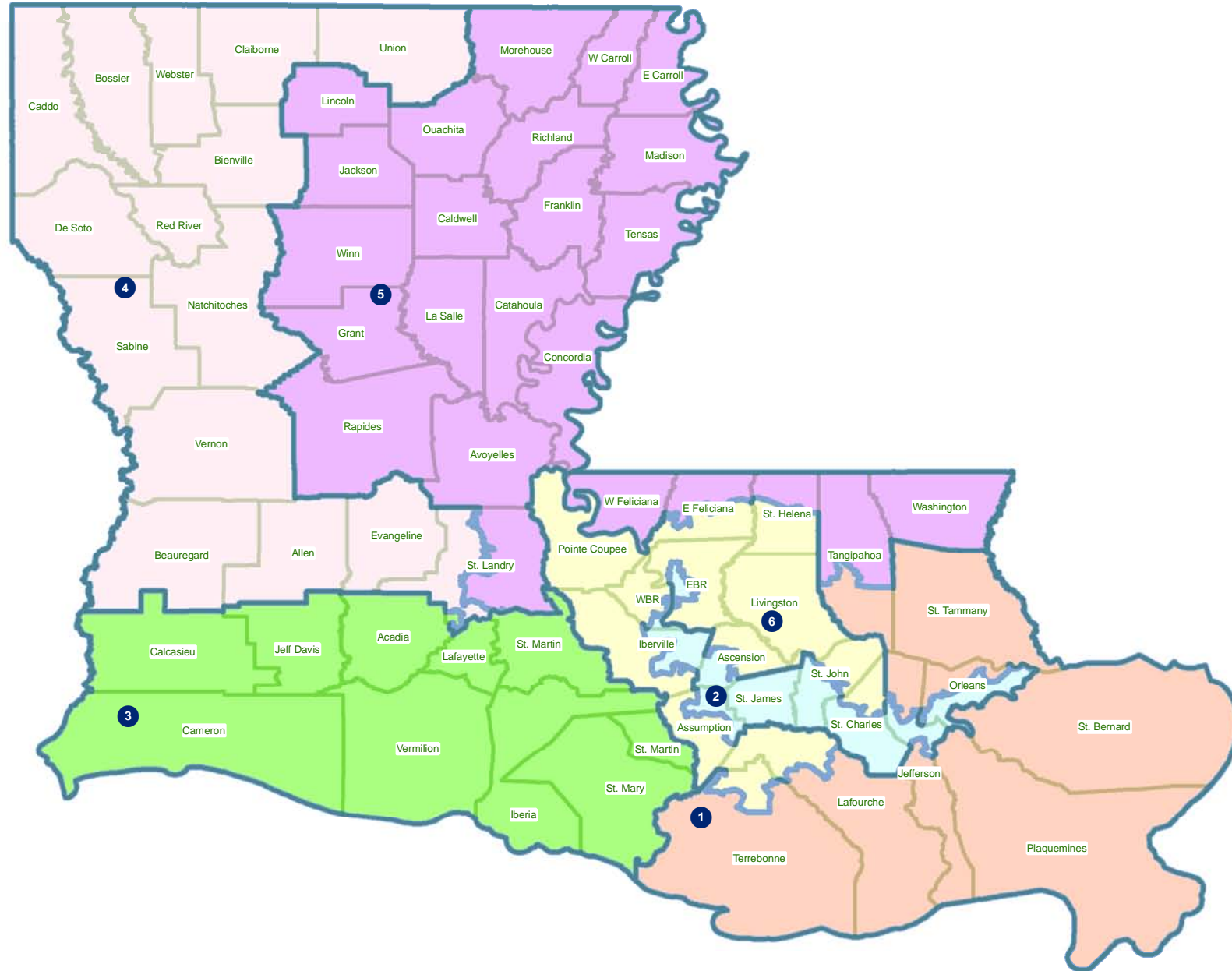
## Splits

	Total Population	Total White	Total Black	Total Asian	Total American Indian	Total Other	VAP Total	VAP White	VAP Black	VAP Asian	VAP American Indian	VAP Other	Reg Total Jan 2011	Reg White Jan 2011	Reg Black Jan 2011	Reg Other Jan 2011
District 3	755,596	532,798	194,139	11,486	6,003	11,170	561,690	410,137	131,334	8,238	4,210	7,771	458,419	336,889	107,033	14,497
	100.000%	70.514%	25.693%	1.520%	0.794%	1.478%	100.000%	73.018%	23.382%	1.467%	0.750%	1.384%	81.614%	73.489%	23.348%	3.162%
District 4																
Allen	25,764	18,435	6,192	220	749	168	19,870	14,288	4,828	154	495	105	13,110	10,190	2,397	523
Beauregard	35,654	29,321	5,016	353	652	312	26,359	21,902	3,569	239	460	189	19,924	16,703	2,304	917
Bienville	14,353	7,935	6,153	44	132	89	11,012	6,279	4,544	31	105	53	9,256	5,112	4,085	59
Bossier	116,979	84,430	25,606	2,516	1,139	3,288	86,945	64,692	17,413	1,836	837	2,167	60,834	46,663	11,491	2,680
Caddo	254,969	124,942	122,229	3,230	1,906	2,662	192,315	100,748	85,902	2,363	1,455	1,847	151,374	79,163	66,708	5,503
Claiborne	17,195	8,167	8,820	62	99	47	13,815	6,781	6,889	37	80	28	8,877	4,908	3,872	97
De Soto	26,656	15,456	10,600	54	331	215	20,006	12,055	7,495	42	273	141	16,396	9,663	6,191	542
Evangeline	33,984	23,439	9,862	139	161	383	24,817	17,619	6,661	97	117	323	21,407	15,267	5,973	167
Natchitoches	39,566	21,494	16,778	197	649	448	29,966	17,226	11,771	151	477	341	22,982	13,181	8,878	923
Red River	9,091	5,360	3,633	16	43	39	6,778	4,256	2,450	12	34	26	5,981	3,566	2,377	38
Sabine	24,233	17,155	4,234	84	2,636	124	18,311	13,544	2,835	63	1,796	73	13,837	10,811	2,032	994
*St. Landry	40,899	24,267	15,686	195	219	532	29,824	18,325	10,815	137	157	390	27,548	16,287	10,702	559
Union	22,721	15,682	6,242	49	115	633	17,493	12,568	4,439	31	91	364	14,964	10,863	3,709	392
Vernon	52,334	39,614	8,313	1,426	1,177	1,804	37,822	29,416	5,349	1,026	848	1,183	21,620	17,881	2,495	1,244
Webster	41,207	26,469	14,044	180	316	198	31,497	20,907	10,110	120	241	119	23,913	16,115	7,416	382
District 4	755,605	462,166	263,408	8,765	10,324	10,942	566,830	360,606	185,070	6,339	7,466	7,349	432,023	276,373	140,630	15,020
	100.000%	61.165%	34.861%	1.160%	1.366%	1.448%	100.000%	63.618%	32.650%	1.118%	1.317%	1.297%	76.217%	63.972%	32.552%	3.477%
District 5																
Avoyelles	42,073	28,188	12,876	174	641	194	31,790	21,850	9,247	126	431	136	23,105	16,874	5,790	441
Caldwell	10,132	8,213	1,778	30	64	47	7,758	6,314	1,336	23	51	34	6,324	5,351	911	62
Catahoula	10,407	6,985	3,318	9	53	42	8,057	5,543	2,438	8	43	25	6,380	4,749	1,596	35
Concordia	20,822	11,959	8,604	59	123	77	15,589	9,298	6,117	41	88	45	12,696	7,997	4,529	170
East Carroll	7,759	2,245	5,398	47	31	38	5,766	1,845	3,830	37	25	29	5,330	1,617	3,664	49
*East Feliciana	11,728	5,161	6,437	46	63	21	9,506	4,342	5,063	40	46	15	7,335	3,641	3,321	373
Franklin	20,767	13,930	6,620	65	82	70	15,450	10,838	4,471	42	63	36	13,466	9,408	3,978	80
Grant	22,309	18,149	3,602	97	385	76	17,158	13,788	2,978	67	274	51	11,900	10,361	1,284	255
Jackson	16,274	11,084	4,947	67	83	93	12,570	8,681	3,724	39	65	61	9,846	6,879	2,805	162
La Salle	14,890	12,689	1,808	40	215	138	11,366	9,677	1,402	35	143	109	8,427	7,648	621	158
Lincoln	46,735	25,775	19,184	874	230	672	37,130	20,875	14,821	749	183	502	24,016	14,604	8,519	893
Madison	12,093	4,498	7,452	33	55	55	9,071	3,644	5,312	20	45	50	7,634	2,780	4,764	90
Morehouse	27,979	14,345	13,281	142	102	109	21,061	11,583	9,230	102	79	67	18,681	10,048	8,329	304
Ouachita	153,720	92,884	57,194	1,722	705	1,215	113,347	72,316	38,405	1,248	549	829	94,408	59,945	30,997	3,466
Rapides	131,613	83,373	43,150	1,912	1,682	1,496	97,599	64,579	29,368	1,377	1,270	1,005	78,056	53,328	22,107	2,621

## Splits

	Total Population	Total White	Total Black	Total Asian	Total American Indian	Total Other	VAP Total	VAP White	VAP Black	VAP Asian	VAP American Indian	VAP Other	Reg Total Jan 2011	Reg White Jan 2011	Reg Black Jan 2011	Reg Other Jan 2011
District 5																
Richland	20,725	12,879	7,544	92	96	114	15,440	9,999	5,237	65	70	69	12,939	8,173	4,646	120
*St. Helena	2,734	1,755	929	2	32	16	2,172	1,441	695	2	25	9	2,250	1,493	735	22
*St. Landry	39,490	19,760	19,113	195	171	251	28,605	15,282	12,921	126	110	166	27,265	14,109	12,705	451
*Tangipahoa	48,369	31,060	15,960	234	359	756	35,480	23,814	10,754	163	270	479	28,029	19,170	8,144	715
Tensas	5,252	2,202	2,991	13	15	31	3,923	1,796	2,085	11	9	22	4,131	1,807	2,304	20
Washington	47,168	31,482	14,884	145	305	352	35,305	24,363	10,374	101	238	229	25,608	17,973	7,239	396
West Carroll	11,604	9,497	1,870	34	86	117	8,746	7,254	1,330	24	62	76	7,167	6,017	1,096	54
West Feliciana	15,625	8,125	7,317	42	35	106	12,907	6,412	6,364	24	33	74	6,796	4,448	2,254	94
Winn	15,313	10,223	4,777	53	167	93	11,871	8,018	3,619	44	129	61	8,892	6,410	2,406	76
District 5	755,581	466,461	271,034	6,127	5,780	6,179	567,667	363,552	191,121	4,514	4,301	4,179	450,681	294,830	144,744	11,107
	100.000%	61.735%	35.871%	0.811%	0.765%	0.818%	100.000%	64.043%	33.668%	0.795%	0.758%	0.736%	79.392%	65.419%	32.117%	2.464%
District 6																
*Ascension	86,903	72,108	11,194	1,118	521	1,962	61,814	52,137	7,356	724	364	1,233	51,808	44,049	5,457	2,302
*Assumption	15,784	12,404	2,928	53	170	229	11,983	9,622	2,055	41	112	153	9,927	8,001	1,841	85
*East Baton Rouge	337,987	208,644	107,858	13,150	1,681	6,654	263,002	172,218	74,395	10,137	1,307	4,945	193,570	134,432	50,231	8,907
*East Feliciana	8,539	5,622	2,813	21	64	19	6,569	4,433	2,060	18	48	10	6,076	3,988	1,805	283
*Iberville	10,061	6,975	2,913	36	58	79	7,841	5,543	2,160	24	48	66	7,110	4,975	2,048	87
*Jefferson	25,015	17,486	3,968	1,315	172	2,074	19,610	14,174	2,757	1,018	136	1,525	13,552	9,487	1,685	2,380
*Lafourche	46,558	35,015	10,058	380	627	478	35,334	27,413	6,926	282	393	320	27,252	21,502	5,081	669
Livingston	128,026	117,601	6,941	906	1,055	1,523	92,696	85,855	4,535	565	782	959	71,580	66,508	2,985	2,087
Pointe Coupee	22,802	14,010	8,427	69	71	225	17,327	11,073	6,020	44	57	133	15,464	9,584	5,696	184
*St. Charles	19,050	15,125	3,101	245	124	455	13,924	11,291	2,051	154	96	332	11,554	9,360	1,563	631
*St. Helena	8,469	3,279	5,085	14	40	51	6,268	2,595	3,596	9	35	33	6,182	2,323	3,782	77
*St. John the Baptist	12,360	8,194	3,506	207	102	351	9,233	6,401	2,354	155	65	258	7,601	5,407	1,773	421
*Terrebonne	20,779	13,953	5,824	194	569	239	15,267	10,677	3,916	142	364	168	11,027	7,877	2,739	411
*West Baton Rouge	13,162	9,478	3,474	55	50	105	10,002	7,311	2,544	41	39	67	8,067	6,079	1,891	97
District 6	755,495	539,894	178,090	17,763	5,304	14,444	570,870	420,743	122,725	13,354	3,846	10,202	440,770	333,572	88,577	18,621
	100.000%	71.462%	23.573%	2.351%	0.702%	1.912%	100.000%	73.702%	21.498%	2.339%	0.674%	1.787%	77.210%	75.679%	20.096%	4.225%

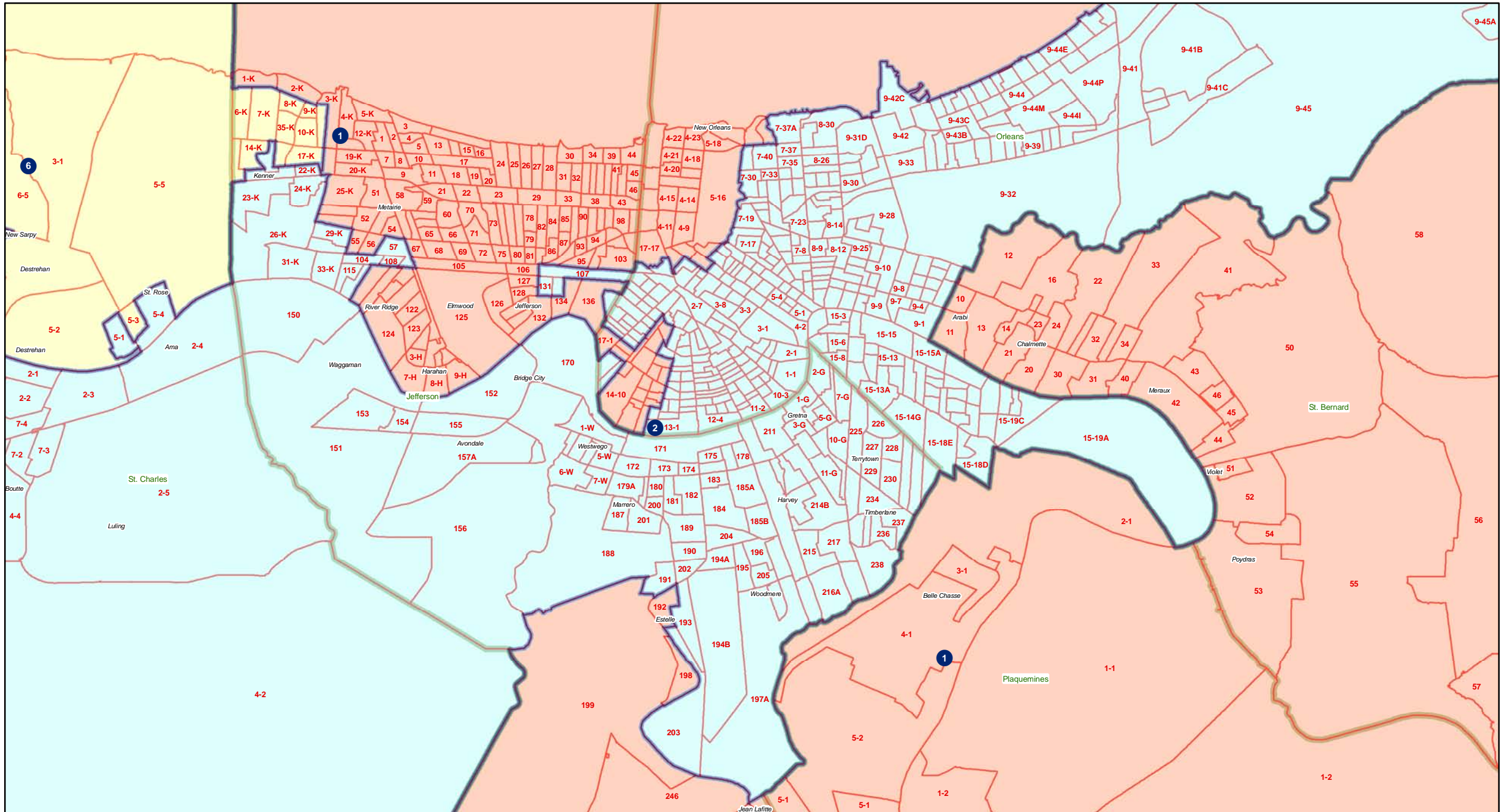
# Congress - Statewide



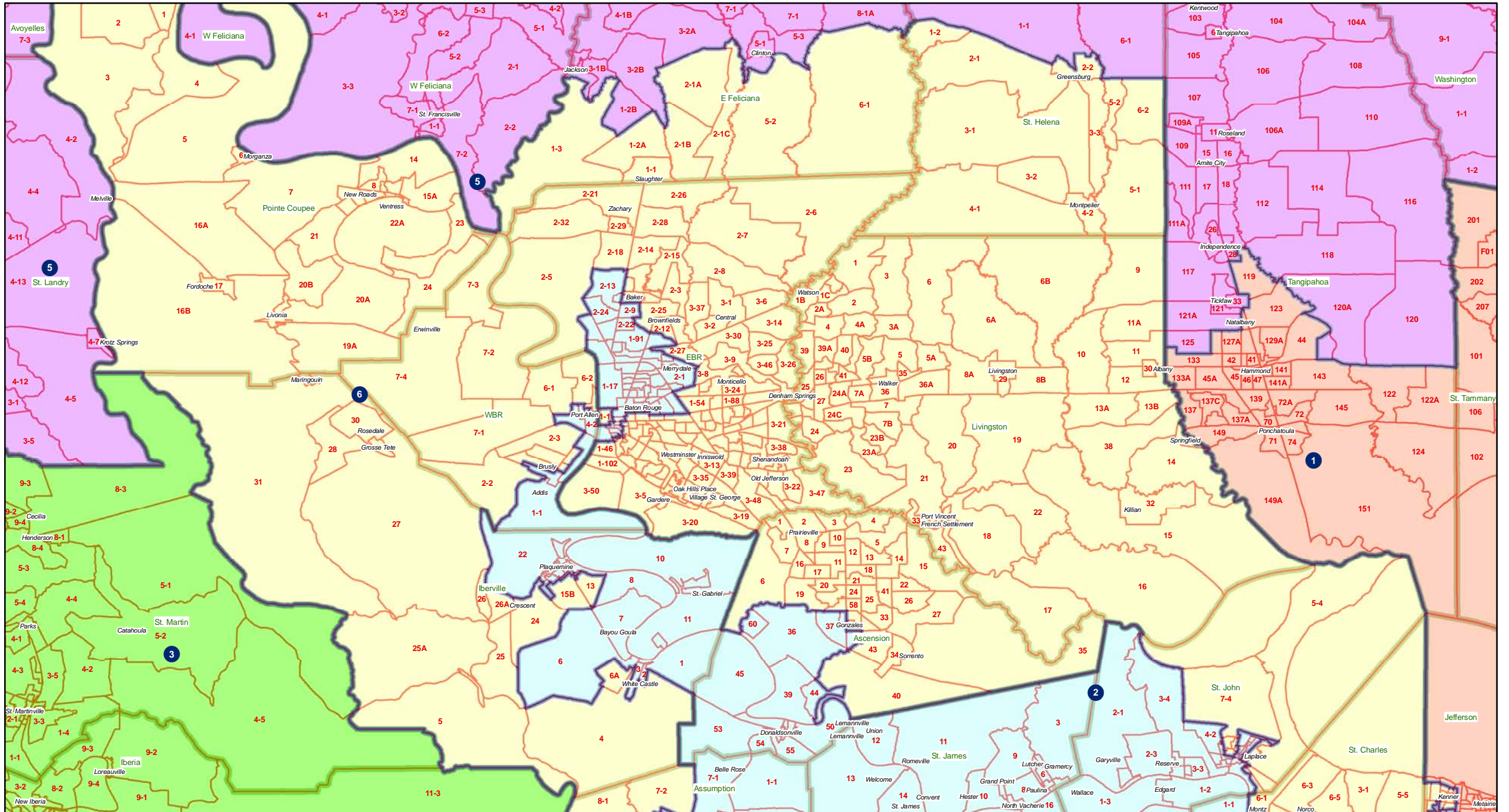




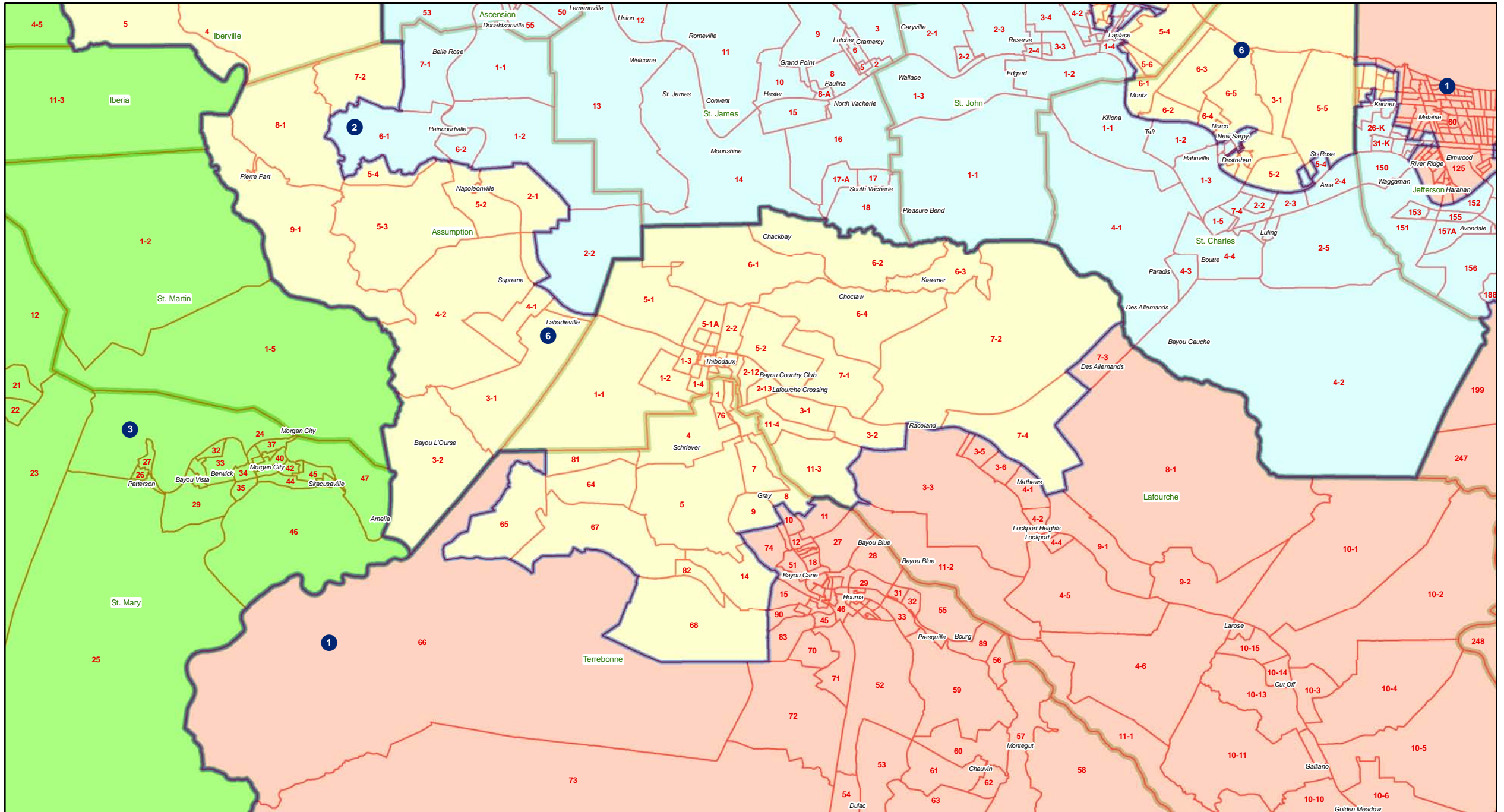
# Congress - Jefferson - Orleans



# Congress - Baton Rouge area



# Congress - Assumption - Houma-Thibodaux area



# Congress - St. Landry

