

2022 First Extraordinary Session

SENATE BILL NO. 13

BY SENATOR FIELDS

COURTS. Provides for the redistricting of the Supreme Court. (2/3 - CA5s4) (Item #6)

1 AN ACT

2 To enact R.S. 13:101.2 and 101.3 and to repeal R.S. 13:101, 101.1, and 312.4, relative to the  
3 supreme court; to provide relative to redistricting supreme court justice districts; to  
4 provide for the filling of vacancies; to eliminate statutory provisions for a temporary  
5 additional judgeship for the Court of Appeal for the Fourth Circuit and such judge's  
6 appointment to the supreme court; and to provide for related matters.

7 Be it enacted by the Legislature of Louisiana:

8 Section 1. R.S. 13:101.2 and 101.3 are hereby enacted to read as follows:

9 **§101.2. Supreme court districts; justices**

10 **The state shall be divided into seven supreme court districts. The**  
11 **supreme court shall be composed of one justice elected from each of the seven**  
12 **districts as set forth below:**

13 **(1) District 1 is composed of Precincts 1, 2, 3, 4, 5, 6, 7, 8, 9, 10, 11, 12,**  
14 **13, 14, 15, 16, 17, 18, 20, 21, 22, 23, 24, 25, 26, 27, 31, 32, 33, 34, 35, 41, 43, 58, 61,**  
15 **62, 63, 64, 71, 72, 73, 76, 77 and 78 of Ascension Parish; Precincts 1-12, 1-43,**  
16 **1-47, 1-56, 1-66, 1-75, 1-80, 1-89, 1-98, 1-99, 1-103, 1-107, 2-6, 2-7, 2-8, 2-33, 3-1,**  
17 **3-2, 3-3, 3-4, 3-6, 3-7, 3-9, 3-10, 3-13, 3-14, 3-15, 3-16, 3-17, 3-18, 3-19, 3-21, 3-22,**

1 3-23, 3-25, 3-26, 3-29, 3-30, 3-33, 3-34, 3-35, 3-36, 3-37, 3-38, 3-39, 3-40, 3-41,  
 2 3-43, 3-45, 3-46, 3-47, 3-48, 3-49, 3-52, 3-53, 3-55, 3-56, 3-59, 3-60, 3-61, 3-62,  
 3 3-63, 3-64, 3-65, 3-66, 3-67, 3-68, 3-70 and 3-71 of East Baton Rouge Parish;  
 4 Precincts 1, 2, 3, 4, 5, 7, 8, 9, 10, 11, 12, 13, 14, 15, 16, 17, 18, 19, 20, 21, 22, 23,  
 5 24, 25, 26, 27, 28, 29, 30, 31, 32, 33, 34, 35, 36, 37, 38, 39, 40, 41, 42, 43, 44, 45, 46,  
 6 51, 52, 53, 54, 55, 56, 57, 58, 59, 60, 61, 62, 63, 64, 65, 66, 67, 68, 69, 70, 71, 72, 73,  
 7 74, 75, 76, 77, 78, 79, 80, 81, 82, 83, 84, 85, 86, 87, 88, 89, 90, 91, 92, 93, 94, 95, 96,  
 8 97, 98, 99, 100, 101, 102, 103, 105, 106, 116, 117, 118, 119, 120, 121, 122, 123, 124,  
 9 125A, 125B, 126, 127, 128, 129, 130, 132, 134, 136, 138, 1-H, 2-H, 3-H, 4-H, 5-H,  
 10 6-H, 7-H, 8-H, 9-H, 1-K, 2-K, 3-K, 4-K, 5-K, 6-KA, 6-KB, 7-KA, 7-KB, 8-K, 9-K,  
 11 10-K, 11-K, 12-K, 13-KA, 13-KB, 14-K, 15-K, 16-K, 17-K, 18-K, 19-K, 20-K,  
 12 25-K, 27-K, 28-K, 29-K, 34-K and 35-K of Jefferson Parish; Livingston Parish;  
 13 Precincts 3-20, 4-8, 4-9, 4-11, 4-14, 4-15, 4-17, 4-17A, 4-18, 4-20, 4-21, 4-22, 4-23,  
 14 5-13, 5-15, 5-16, 5-17, 5-18, 17-17, 17-18, 17-18A, 17-19 and 17-20 of Orleans  
 15 Parish; Precincts 1-6, 2-6, 3-1, 3-2, 3-3, 5-5, 6-1, 6-2, 6-4, 6-6, 6-7 and 6-8 of St.  
 16 Charles Parish; Precincts 4-13, 5-4 and 5-7 of St. John the Baptist Parish;  
 17 Tangipahoa Parish.

18 (2) District 2 is composed of Assumption Parish; Avoyelles Parish;  
 19 Evangeline Parish; Iberia Parish; Precincts 5, 25, 26, 27, 28, 29, 31 and 32 of  
 20 Iberville Parish; Lafayette Parish; Pointe Coupee Parish; St. Landry Parish; St.  
 21 Martin Parish; St. Mary Parish; Vermilion Parish and Precincts 1B, 2A, 3, 4,  
 22 5, 18 and 21 of West Baton Rouge Parish.

23 (3) District 3 is composed of Acadia Parish; Allen Parish; Beauregard  
 24 Parish; Calcasieu Parish; Cameron Parish; Catahoula Parish; Grant Parish;  
 25 Jefferson Davis Parish; La Salle Parish; Natchitoches Parish; Rapides Parish;  
 26 Sabine Parish; Vernon Parish and Winn Parish.

27 (4) District 4 is composed of Bienville Parish; Bossier Parish; Caddo  
 28 Parish; Caldwell Parish; Claiborne Parish; De Soto Parish; Franklin Parish;  
 29 Jackson Parish; Lincoln Parish; Precincts 1, 1A, 2, 4, 6, 7, 8, 25, 31, 32, 33, 34,

1 35, 36, 37, 38, 39, 40, 41, 42, 43, 44, 44A, 45, 46, 47, 48, 49, 50, 51, 51A, 52, 52A,  
 2 53, 54, 55, 56, 56A, 57, 58, 61, 64, 71, 75, 76, 77 and 78 of Ouachita Parish; Red  
 3 River Parish; Union Parish and Webster Parish.

4 (5) District 5 is composed of Precincts 28, 30, 36, 37, 39, 40, 42, 44, 45,  
 5 47, 48, 50, 51, 52, 53, 54, 55, 57, 65 and 66 of Ascension Parish; Concordia  
 6 Parish; Precincts 1-1, 1-2, 1-3, 1-4, 1-5, 1-6, 1-7, 1-8, 1-9, 1-10, 1-11, 1-13, 1-14,  
 7 1-15, 1-16, 1-17, 1-18, 1-19, 1-20, 1-21, 1-22, 1-23, 1-24, 1-25, 1-26, 1-27, 1-28,  
 8 1-29, 1-30, 1-31, 1-32, 1-33, 1-34, 1-35, 1-36, 1-37, 1-38, 1-39, 1-40, 1-41, 1-42,  
 9 1-44, 1-45, 1-46, 1-48, 1-49, 1-50, 1-51, 1-52, 1-53, 1-54, 1-55, 1-57, 1-58, 1-59,  
 10 1-60, 1-61, 1-62, 1-63, 1-64, 1-65, 1-67, 1-68, 1-69, 1-70, 1-71, 1-72, 1-73, 1-74,  
 11 1-76, 1-77, 1-78, 1-79, 1-81, 1-82, 1-83, 1-84, 1-85, 1-86, 1-87, 1-88, 1-90, 1-91,  
 12 1-92, 1-93, 1-94, 1-95, 1-97, 1-100, 1-101, 1-102, 1-104, 1-105, 2-1, 2-2, 2-3, 2-4,  
 13 2-5, 2-9, 2-10, 2-11, 2-12, 2-13, 2-14, 2-15, 2-16, 2-17, 2-18, 2-19, 2-20, 2-21, 2-22,  
 14 2-23, 2-24, 2-25, 2-26, 2-27, 2-28, 2-29, 2-30, 2-31, 2-32, 2-34, 2-35, 2-36, 2-37, 3-5,  
 15 3-8, 3-11, 3-12, 3-20, 3-24, 3-27, 3-28, 3-31, 3-32, 3-44, 3-50, 3-51, 3-54, 3-57, 3-58,  
 16 3-69 and 3-72 of East Baton Rouge Parish; East Carroll Parish; East Feliciana  
 17 Parish; Precincts 1, 3, 4, 6, 7, 9, 10, 11, 12, 13, 13C, 14, 14A, 15, 15B, 16, 17, 18,  
 18 19, 20, 21, 22, 23 and 24 of Iberville Parish; Madison Parish; Morehouse Parish;  
 19 Precincts 3, 5, 9, 9A, 10, 11, 12, 13, 14, 15, 16, 17, 18, 19, 20, 21, 22, 23, 24, 26, 27,  
 20 27A, 28, 29, 30, 59, 60, 62, 63, 65, 65A, 66, 67, 68, 69, 70, 72, 73, 74 and 79 of  
 21 Ouachita Parish; Richland Parish; St. Helena Parish; St. James Parish;  
 22 Precincts 1, 2, 6, 11, 15, 16, 17, 18, 26, 27, 40, 40A, 41, 42, 42A, 43, 45, 45A, 46,  
 23 47, 101, 105, 107, 109, 111A, 115B, 117, 121A, 125, 127, 127A, 129, 129A and 133  
 24 of Tangipahoa Parish; Tensas Parish; Precincts 1A, 1C, 2B, 6, 7A, 7B, 8, 9, 10A,  
 25 10B, 11A, 11B, 12, 13A, 13B, 14, 15, 16, 17, 19, 20 and 22 of West Baton Rouge  
 26 Parish; West Carroll Parish and West Feliciana Parish.

27 (6) District 6 is composed of Precincts 176, 177, 178, 182, 183, 184, 185A,  
 28 185B, 189, 190, 191, 192, 193A, 193B, 194A, 194B, 198, 199, 202, 203, 204, 246,  
 29 247, 248, 1-GI and 1-L of Jefferson Parish; Lafourche Parish; Precincts 9-45A

1 of Orleans Parish; Precincts 1-3, 3-1, 4-1, 5-1, 6-1, 6-2, 7-1, 7-2, 8-1, 8-2, 8-3, 9-1  
 2 and 9-2 of Plaquemines Parish; Precinct 51 of St. Bernard Parish; St. Tammany  
 3 Parish; Precincts 28, 33, 44, 48, 49, 70, 70A, 71, 72, 72A, 73, 74, 102, 104, 104A,  
 4 106, 106A, 108, 110, 112, 114, 116, 118, 119, 120, 120A, 120B, 121, 122, 122A,  
 5 122B, 123, 124, 124A, 133A, 137, 137A, 137B, 137C, 137D, 139, 141, 141A, 143,  
 6 143A, 145, 147, 149, 149A and 151 of Tangipahoa Parish; Terrebonne Parish  
 7 and Washington Parish.

8 (7) District 7 is composed of Precincts 104, 108, 115, 131, 133, 150, 151,  
 9 152, 153, 154, 155, 156, 157A, 157B, 170, 171, 172, 173, 174, 175, 179A, 179B,  
 10 180, 181, 187, 188, 195, 196, 197A, 197B, 200, 201, 205, 210, 211, 212, 213A,  
 11 213B, 213C, 214A, 214B, 215, 216A, 216B, 216C, 217, 225, 226, 227, 228, 229,  
 12 230, 231, 232A, 232B, 234, 235, 236, 237, 238A, 238B, 1-G, 2-G, 3-G, 4-G, 5-G,  
 13 6-G, 7-G, 8-G, 9-G, 10-G, 11-G, 12-G, 13-G, 21-K, 22-K, 23-K, 24-K, 26-K,  
 14 30-K, 31-K, 33-K, 1-W, 2-W, 3-W, 4-W, 5-W, 6-W and 7-W of Jefferson Parish;  
 15 Precincts 1-1, 1-2, 1-5, 1-6, 2-1, 2-2, 2-4, 2-6, 2-7, 3-1, 3-8, 3-9, 3-12, 3-14, 3-15,  
 16 3-18, 3-19, 4-2, 4-3, 4-5, 4-6, 4-7, 5-1, 5-2, 5-3, 5-5, 5-7, 5-8, 5-9, 5-10, 5-11, 5-12,  
 17 6-1, 6-2, 6-4, 6-6, 6-7, 6-8, 6-9, 7-1, 7-2, 7-4, 7-5, 7-6, 7-7, 7-8, 7-9A, 7-10, 7-11,  
 18 7-12, 7-13, 7-14, 7-15, 7-16, 7-17, 7-18, 7-19, 7-20, 7-21, 7-23, 7-24, 7-25, 7-25A,  
 19 7-26, 7-27, 7-27B, 7-28, 7-28A, 7-29, 7-30, 7-32, 7-33, 7-35, 7-37, 7-37A, 7-40,  
 20 7-41, 7-42, 8-1, 8-2, 8-4, 8-6, 8-7, 8-8, 8-9, 8-12, 8-13, 8-14, 8-15, 8-19, 8-20, 8-21,  
 21 8-22, 8-23, 8-24, 8-25, 8-26, 8-27, 8-28, 8-30, 9-1, 9-3, 9-4, 9-5, 9-6, 9-7, 9-8, 9-9,  
 22 9-10, 9-11, 9-12, 9-13, 9-14, 9-15, 9-16, 9-17, 9-19, 9-21, 9-23, 9-25, 9-26, 9-28,  
 23 9-28C, 9-29, 9-30, 9-30A, 9-31, 9-31A, 9-31B, 9-31D, 9-32, 9-33, 9-34A, 9-35,  
 24 9-35A, 9-36, 9-36B, 9-37, 9-38, 9-38A, 9-39, 9-39B, 9-40, 9-40A, 9-40C, 9-41,  
 25 9-41A, 9-41B, 9-41C, 9-41D, 9-42, 9-42C, 9-43A, 9-43B, 9-43C, 9-43E, 9-43F,  
 26 9-43G, 9-43H, 9-43I, 9-43J, 9-43K, 9-43L, 9-43M, 9-43N, 9-44, 9-44A, 9-44B,  
 27 9-44D, 9-44E, 9-44F, 9-44G, 9-44I, 9-44J, 9-44L, 9-44M, 9-44N, 9-44O, 9-44P,  
 28 9-44Q, 9-45, 10-3, 10-6, 10-7, 10-8, 10-9, 10-11, 10-12, 10-13, 10-14, 11-2, 11-3,  
 29 11-4, 11-5, 11-8, 11-9, 11-10, 11-11, 11-12, 11-13, 11-14, 11-17, 12-1, 12-2, 12-3,

1 12-4, 12-5, 12-6, 12-7, 12-8, 12-9, 12-10, 12-11, 12-12, 12-13, 12-14, 12-16, 12-17,  
 2 12-19, 13-1, 13-2, 13-3, 13-4, 13-5, 13-6, 13-7, 13-8, 13-9, 13-10, 13-11, 13-12,  
 3 13-13, 13-14, 13-15, 13-16, 14-1, 14-2, 14-3, 14-4, 14-5, 14-6, 14-7, 14-8, 14-9,  
 4 14-10, 14-11, 14-12, 14-13A, 14-14, 14-15, 14-16, 14-17, 14-18A, 14-19, 14-20,  
 5 14-21, 14-23, 14-24A, 14-25, 14-26, 15-1, 15-2, 15-3, 15-5, 15-6, 15-8, 15-9, 15-10,  
 6 15-11, 15-12, 15-12A, 15-13, 15-13A, 15-13B, 15-14, 15-14A, 15-14B, 15-14C,  
 7 15-14D, 15-14E, 15-14F, 15-14G, 15-15, 15-15A, 15-15B, 15-16, 15-17, 15-17A,  
 8 15-17B, 15-18, 15-18A, 15-18B, 15-18C, 15-18D, 15-18E, 15-18F, 15-19, 15-19A,  
 9 15-19B, 15-19C, 16-1, 16-1A, 16-2, 16-3, 16-4, 16-5, 16-6, 16-7, 16-8, 16-9, 17-1,  
 10 17-2, 17-3, 17-4, 17-5, 17-6, 17-7, 17-8, 17-9, 17-10, 17-11, 17-12, 17-13, 17-13A,  
 11 17-14, 17-15 and 17-16 of Orleans Parish; Precincts 1-1, 1-2 and 2-1 of  
 12 Plaquemines Parish; Precincts 10, 11, 12, 13, 14, 15, 20, 21, 22, 23, 24, 25, 30, 31,  
 13 32, 33, 34, 40, 41, 42, 42A, 43, 44, 45, 46, 50, 52, 53, 54 and 55 of St. Bernard  
 14 Parish; Precincts 1-1, 1-2, 1-3, 1-5, 2-1, 2-2, 2-3, 2-4, 2-5, 4-1, 4-2, 4-3, 4-4, 5-1,  
 15 5-3, 5-4, 7-1, 7-2, 7-3 and 7-4 of St. Charles Parish and Precincts 1-1, 1-2, 1-3,  
 16 1-4, 1-5, 2-1, 2-2, 2-3, 2-4, 3-1, 3-2, 3-4, 4-1, 4-2, 4-3, 4-14, 5-1, 5-8, 6-1, 6-3, 6-4,  
 17 7-2, 7-3, 7-5 and 7-7 of St. John the Baptist Parish.

18 §101.3. Assignment of districts; vacancies, elections; redistricting

19 A. Each office of the justices serving on the supreme court on January  
 20 1, 2023, is assigned to the supreme court district provided for in R.S. 13:101.2  
 21 as follows:

22 (1) The office of the justice elected from the first supreme court district  
 23 is assigned to District 1.

24 (2) The office of the justice elected from the second supreme court  
 25 district is assigned to District 2.

26 (3) The office of the justice elected from the third supreme court district  
 27 is assigned to District 3.

28 (4) The office of the justice elected from the fourth supreme court  
 29 district is assigned to District 4.

1                   **(5) The office of the justice elected from the fifth supreme court district**  
2                   **is assigned to District 5.**

3                   **(6) The office of the justice elected from the sixth supreme court district**  
4                   **is assigned to District 6.**

5                   **(7) The office of the justice elected from the seventh supreme court**  
6                   **district is assigned to District 7.**

7                   **B. The successor to the office of justice of the supreme court shall be**  
8                   **elected from the district assigned to that office in Subsection A of this Section.**  
9                   **The election shall be from the district as composed R.S. 13:101.2 and assigned**  
10                  **to that office as provided in Subsection A of this Section.**

11                  Section 2. R.S. 13:101, 101.1, and 312.4 are hereby repealed.

12                  Section 3. (A) The precincts referenced in this Act are those precincts identified as  
13                  Voting Districts (VTDs) in the 2020 Census Redistricting TIGER/Line Shapefiles for the  
14                  State of Louisiana as validated through the data verification program of the Louisiana House  
15                  of Representatives and the Louisiana Senate and available on the legislature's website on the  
16                  effective date of this Section.

17                  (B) When a precinct referenced in this Act has been subdivided by action of the  
18                  parish governing authority on a nongeographic basis or subdivided by action of the parish  
19                  governing authority on a geographic basis in accordance with the provisions of R.S.  
20                  18:532.1, the enumeration in this Act of the general precinct designation shall include all  
21                  nongeographic and all geographic subdivisions thereof, however such subdivisions may be  
22                  designated.

23                  (C) The territorial limits of the districts as provided in this Act shall continue in  
24                  effect until changed by law regardless of any subsequent change made to the precincts by  
25                  the parish governing authority.

26                  Section 4. (A) Solely for the purposes of qualifying for election and the election of  
27                  a member of the Supreme Court from District 6 at the regularly scheduled election for such  
28                  office in 2022, the provisions of Section 1 of this Act shall become effective upon signature  
29                  of this Act by the governor or, if not signed by the governor, upon expiration of the time for

1 bills to become law without signature by the governor, as provided in Article III, Section 18  
2 of the Constitution of Louisiana. For subsequent elections of members of the Supreme Court  
3 and for all other purposes, the provisions of Section 1 of this Act shall become effective on  
4 January 1, 2023.

5 (B) The provisions of Section 2 of this Act shall become effective on January 1,  
6 2023.

7 (C) The provisions of this Section and Section 3 of this Act shall become effective  
8 upon signature of this Act by the governor or, if not signed by the governor, upon expiration  
9 of the time for bills to become law without signature by the governor, as provided in Article  
10 III, Section 18 of the Constitution of Louisiana. If this Act is vetoed by the governor and  
11 subsequently approved by the legislature, the provisions of this Section and Section 3 of this  
12 Act shall become effective on the day following such approval.

---

The original instrument and the following digest, which constitutes no part  
of the legislative instrument, were prepared by J. W. Wiley.

---

## DIGEST

SB 13 Original

2022 First Extraordinary Session

Fields

Present constitution (Const. Art. V, §3) provides the supreme court must be composed of a chief justice and six associate justices.

Present constitution (Const. Art. V, §4) provides the state must be divided into at least six supreme court districts, and at least one judge shall be elected from each. Further provides the districts and the number of judges assigned to each on the effective date of this constitution are retained, subject to change by law enacted by two-thirds of the elected members of each house of the legislature.

Proposed law redraws district boundaries for the seven Supreme Court districts.

Proposed law provides the district boundaries will be effective upon signature of the governor or lapse of time for gubernatorial action for the purposes of qualifying for election and the election of a member of the Supreme Court from District 6 at the regularly scheduled election for such office in 2022.

Proposed law provides for subsequent elections of members of the Supreme Court and for all other purposes an effective date of January 1, 2023, at which time present law is repealed and proposed districts are effective for all other purposes.

Proposed law repeals present law that provides for an additional judgeship for the Court of Appeals for the Fourth Circuit who is assigned to the Louisiana Supreme Court.

Proposed law specifies that precincts referenced in district descriptions are those precincts identified as Voting Districts (VTDs) in the 2020 Census Redistricting TIGER/Line Shapefiles for the state of La. as validated through the data verification program of the La. legislature. Also specifies that if any such precinct has been subdivided by action of the

parish governing authority on a nongeographic basis or subdivided by action of the parish governing authority on a geographic basis in accordance with present law, the enumeration of the general precinct designation shall include all nongeographic and all geographic subdivisions thereof. Further provides that the territorial limits of the districts as enacted shall continue in effect without change regardless of any subsequent change made to the precincts by the parish governing authority.

Population data in the summaries accompanying this digest are derived from 2020 Census Redistricting Data (Public Law 94-171), Summary File for Louisiana. Population data, statistical information, and maps are supplied for purposes of information and analysis and comprise no part of proposed law.

(Adds R.S. 13:101.2 and 101.3; repeals R.S. 13:101, 101.1, and 312.4)



# Plan Statistics

Plan: SLS 221ES-14 by Sen. Fields

<u>Districts:</u>	<u># of Members</u>	<u>Actual Population</u>	<u>Ideal Population</u>	<u>Absolute Deviation</u>	<u>Relative Deviation</u>
District 1	1	684,284	665,393	18,891	2.839%
District 2	1	680,754	665,393	15,361	2.309%
District 3	1	669,591	665,393	4,198	0.631%
District 4	1	674,381	665,393	8,988	1.351%
District 5	1	644,270	665,393	-21,123	-3.175%
District 6	1	667,801	665,393	2,408	0.362%
District 7	1	636,676	665,393	-28,717	-4.316%
<b>Grand Total:</b>	<b>7</b>	<b>4,657,757</b>	<b>4,657,751</b>		

Ideal Population Per Member:	665393		
Number of Districts for Plan Type:	7		
Range of District Populations:	636,676	to	684,284
Absolute Mean Deviation:	6,801		
Absolute Range:	-28,717	to	18,891
Absolute Overall Range:	47,608		
Relative Mean Deviation:	2.14%		
Relative Range:	-4.32%	to	2.84%
Relative Overall Range:	7.16%		

<b><i>Ideal - Actual:</i></b>	<b>-6</b>
<b><i>Remainder:</i></b>	<b>6</b>
<b><i>Unassigned Population:</i></b>	<b>0</b>

# Total Population

Plan: SLS 221ES-14 by Sen. Fields

	Total Population	Total White	Total Black	Total Asian	Total American Indian	Total Other	Total Hispanic	VAP Total	VAP White	VAP Black	VAP Asian	VAP American Indian	VAP Other	VAP Hispanic Total
District 1	684,284	481,001	99,611	24,002	11,883	67,787	81,451	527,131	382,706	70,258	17,408	8,882	47,877	56,423
	100.000%	70.293%	14.557%	3.508%	1.737%	9.906%	11.903%	100.000%	72.602%	13.328%	3.302%	1.685%	9.083%	10.704%
District 2	680,754	423,424	204,840	12,988	9,118	30,384	35,410	517,140	334,691	145,056	9,447	6,719	21,227	24,230
	100.000%	62.199%	30.090%	1.908%	1.339%	4.463%	5.202%	100.000%	64.720%	28.050%	1.827%	1.299%	4.105%	4.685%
District 3	669,591	450,827	166,019	10,692	16,339	25,714	32,957	507,918	351,427	117,757	7,805	12,014	18,915	23,625
	100.000%	67.329%	24.794%	1.597%	2.440%	3.840%	4.922%	100.000%	69.190%	23.184%	1.537%	2.365%	3.724%	4.651%
District 4	674,381	387,018	239,555	10,782	12,872	24,154	28,304	516,527	308,589	173,710	7,859	9,865	16,504	18,694
	100.000%	57.389%	35.522%	1.599%	1.909%	3.582%	4.197%	100.000%	59.743%	33.630%	1.522%	1.910%	3.195%	3.619%
District 5	644,270	238,285	360,931	12,194	6,136	26,724	32,301	497,365	200,279	263,377	9,715	4,723	19,271	23,156
	100.000%	36.985%	56.022%	1.893%	0.952%	4.148%	5.014%	100.000%	40.268%	52.954%	1.953%	0.950%	3.875%	4.656%
District 6	667,801	468,324	123,327	13,762	23,003	39,385	47,182	509,206	370,193	85,711	9,909	16,041	27,352	31,660
	100.000%	70.129%	18.468%	2.061%	3.445%	5.898%	7.065%	100.000%	72.700%	16.832%	1.946%	3.150%	5.371%	6.218%
District 7	636,676	208,773	348,836	22,868	7,709	48,490	64,944	495,261	176,626	259,900	18,273	5,996	34,466	45,874
	100.000%	32.791%	54.790%	3.592%	1.211%	7.616%	10.200%	100.000%	35.663%	52.477%	3.690%	1.211%	6.959%	9.263%
Grand Total	4,657,757	2,657,652	1,543,119	107,288	87,060	262,638	322,549	3,570,548	2,124,511	1,115,769	80,416	64,240	185,612	223,662
	100.000%	57.059%	33.130%	2.303%	1.869%	5.639%	6.925%	100.000%	59.501%	31.249%	2.252%	1.799%	5.198%	6.264%

# Voter Registration

Plan: SLS 221ES-14 by Sen. Fields

	Reg Total Dec 2021	Reg White Dec 2021	Reg Black Dec 2021	Reg Other Dec 2021	Reg Dem Total Dec 2021	Reg Rep Total Dec 2021	Reg Other Total Dec 2021
District 1	430,643	346,404	48,835	35,404	116,331	190,147	124,165
	81.696%	80.439%	11.340%	8.221%	27.013%	44.154%	28.832%
District 2	437,493	297,175	123,403	16,915	171,931	153,746	111,816
	84.599%	67.927%	28.207%	3.866%	39.299%	35.143%	25.558%
District 3	395,729	291,089	87,865	16,775	136,925	153,178	105,626
	77.912%	73.558%	22.203%	4.239%	34.601%	38.708%	26.691%
District 4	416,117	263,037	136,805	16,275	154,160	159,333	102,624
	80.561%	63.212%	32.877%	3.911%	37.047%	38.290%	24.662%
District 5	391,496	155,939	220,783	14,774	217,859	82,654	90,983
	78.714%	39.832%	56.395%	3.774%	55.648%	21.112%	23.240%
District 6	417,585	326,396	64,771	26,418	118,212	177,352	122,021
	82.007%	78.163%	15.511%	6.326%	28.308%	42.471%	29.221%
District 7	405,283	147,949	220,286	37,048	245,586	52,370	107,327
	81.832%	36.505%	54.354%	9.141%	60.596%	12.922%	26.482%
Grand Total	2,894,346	1,827,989	902,748	163,609	1,161,004	968,780	764,562

# Splits

## Plan: SLS 221ES-14 by Sen. Fields

	Total Population	Total White	Total Black	Total Asian	Total American Indian	Total Other	VAP Total	VAP White	VAP Black	VAP Asian	VAP American Indian	VAP Other	Reg Total Dec 2021	Reg White Dec 2021	Reg Black Dec 2021	Reg Other Dec 2021
District 1																
*Ascension	98,954	71,798	15,989	2,072	1,763	7,332	71,584	53,536	10,733	1,345	1,226	4,744	62,273	50,039	8,662	3,572
*East Baton Rouge	158,419	105,816	33,487	7,392	2,229	9,495	123,911	85,958	24,038	5,336	1,767	6,812	106,685	81,243	18,276	7,166
*Jefferson	234,102	148,828	31,095	11,427	4,017	38,735	187,494	124,824	22,848	8,635	3,026	28,161	142,284	110,689	12,748	18,847
Livingston	142,282	116,855	12,658	1,697	3,111	7,961	105,141	88,432	8,136	1,099	2,311	5,163	84,568	76,062	5,425	3,081
*Orleans	26,823	21,755	1,548	1,046	332	2,142	21,017	17,326	1,132	746	259	1,554	19,009	16,477	816	1,716
*St. Charles	19,887	13,870	3,607	347	356	1,707	14,990	10,865	2,485	229	241	1,170	13,288	10,224	2,182	882
*St. John the Baptist	3,817	2,079	1,227	21	75	415	2,994	1,765	886	18	52	273	2,536	1,670	726	140
*Tangipahoa	0	0	0	0	0	0	0	0	0	0	0	0	0	0	0	0
District 1	684,284	481,001	99,611	24,002	11,883	67,787	527,131	382,706	70,258	17,408	8,882	47,877	430,643	346,404	48,835	35,404
	100.000%	70.293%	14.557%	3.508%	1.737%	9.906%	100.000%	72.602%	13.328%	3.302%	1.685%	9.083%	81.696%	80.439%	11.340%	8.221%
District 2																
Assumption	21,039	13,722	6,220	96	258	743	16,616	11,145	4,707	57	197	510	14,439	9,700	4,510	229
Avoyelles	39,693	25,625	11,678	434	767	1,189	30,578	20,269	8,311	379	570	1,049	23,426	16,534	6,294	598
Evangeline	32,350	21,354	9,235	241	280	1,240	24,408	16,460	6,483	187	217	1,061	20,553	14,566	5,643	344
Iberia	69,929	39,206	24,556	2,123	794	3,250	52,791	31,295	17,069	1,562	581	2,284	44,526	28,287	14,352	1,887
*Iberville	6,030	4,128	1,710	17	83	92	4,891	3,377	1,362	12	66	74	4,652	3,105	1,473	74
Lafayette	241,753	153,363	65,136	6,454	3,210	13,590	183,875	121,608	45,917	4,664	2,387	9,299	153,493	108,645	36,481	8,367
Pointe Coupee	20,758	12,395	7,504	107	159	593	16,250	10,108	5,502	91	119	430	14,675	9,320	5,121	234
St. Landry	82,540	43,611	35,836	499	636	1,958	61,811	34,209	25,497	353	451	1,301	54,482	30,093	23,005	1,384
St. Martin	51,767	33,259	15,921	597	539	1,451	39,404	26,278	11,293	407	413	1,013	35,120	23,934	10,381	805
St. Mary	49,406	26,949	15,991	835	1,670	3,961	37,521	21,594	11,520	593	1,173	2,641	30,210	18,712	9,891	1,607
Vermilion	57,359	44,477	8,810	1,447	623	2,002	43,012	34,363	5,787	1,037	488	1,337	36,769	30,505	4,994	1,270
*West Baton Rouge	8,130	5,335	2,243	138	99	315	5,983	3,985	1,608	105	57	228	5,148	3,774	1,258	116
District 2	680,754	423,424	204,840	12,988	9,118	30,384	517,140	334,691	145,056	9,447	6,719	21,227	437,493	297,175	123,403	16,915
	100.000%	62.199%	30.090%	1.908%	1.339%	4.463%	100.000%	64.720%	28.050%	1.827%	1.299%	4.105%	84.599%	67.927%	28.207%	3.866%
District 3																
Acadia	57,576	44,480	10,864	238	573	1,421	42,943	34,071	7,383	173	400	916	37,678	30,555	6,407	716
Allen	22,750	16,327	4,490	246	947	740	17,510	12,751	3,275	182	646	656	12,201	9,478	2,217	506
Beauregard	36,549	29,529	4,649	402	1,052	917	27,489	22,304	3,495	269	773	648	22,294	18,771	2,369	1,154
Calcasieu	216,785	139,772	59,386	4,702	3,536	9,389	163,166	108,789	41,898	3,359	2,604	6,516	120,511	85,659	29,513	5,339
Cameron	5,617	5,232	125	30	75	155	4,358	4,100	79	23	47	109	4,789	4,610	88	91
Catahoula	8,906	5,776	2,395	46	119	570	6,951	4,557	1,736	33	87	538	6,467	4,639	1,770	58
Grant	22,169	17,709	3,335	133	644	348	17,527	13,964	2,717	97	507	242	12,688	11,174	1,176	338
Jefferson Davis	32,250	25,066	5,837	183	472	692	24,039	19,121	4,006	111	325	476	20,013	16,350	3,202	461

# Splits

## Plan: SLS 221ES-14 by Sen. Fields

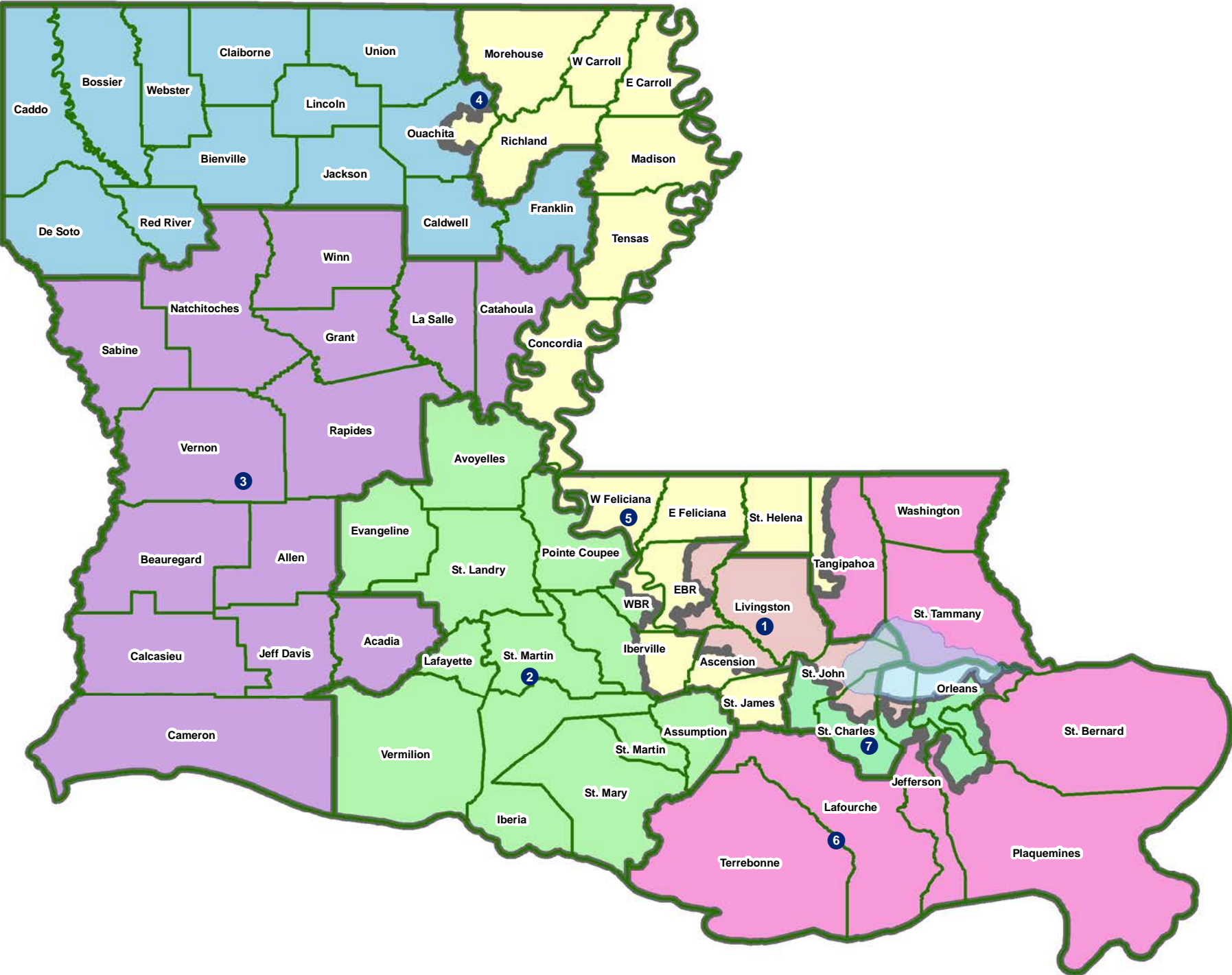
	Total Population	Total White	Total Black	Total Asian	Total American Indian	Total Other	VAP Total	VAP White	VAP Black	VAP Asian	VAP American Indian	VAP Other	Reg Total Dec 2021	Reg White Dec 2021	Reg Black Dec 2021	Reg Other Dec 2021
District 3																
La Salle	14,791	11,348	1,422	283	372	1,366	11,563	8,636	1,065	264	271	1,327	8,792	7,978	637	177
Natchitoches	37,515	19,361	15,725	255	861	1,313	29,349	16,010	11,415	198	683	1,043	23,107	12,850	9,224	1,033
Rapides	130,023	77,510	42,592	2,428	3,102	4,391	98,792	61,373	30,205	1,786	2,334	3,094	80,176	52,832	23,775	3,569
Sabine	22,155	15,036	3,861	94	2,723	441	17,064	12,054	2,655	66	1,970	319	14,547	11,023	2,184	1,340
Vernon	48,750	35,087	7,611	1,442	1,600	3,010	36,261	26,765	5,133	1,074	1,160	2,129	24,060	19,182	3,011	1,867
Winn	13,755	8,594	3,727	210	263	961	10,906	6,932	2,695	170	207	902	8,406	5,988	2,292	126
District 3	669,591	450,827	166,019	10,692	16,339	25,714	507,918	351,427	117,757	7,805	12,014	18,915	395,729	291,089	87,865	16,775
	100.000%	67.329%	24.794%	1.597%	2.440%	3.840%	100.000%	69.190%	23.184%	1.537%	2.365%	3.724%	77.912%	73.558%	22.203%	4.239%
District 4																
Bienville	12,981	6,950	5,600	57	207	167	10,073	5,486	4,284	30	162	111	8,847	4,843	3,917	87
Bossier	128,746	81,052	32,551	3,492	3,273	8,378	95,876	62,931	22,440	2,448	2,477	5,580	69,743	50,861	14,838	4,044
Caddo	237,848	103,457	119,304	4,034	3,840	7,213	182,407	85,059	86,359	3,008	2,958	5,023	151,296	73,113	71,249	6,934
Caldwell	9,645	7,646	1,632	51	150	166	7,478	5,969	1,224	46	116	123	6,031	5,124	818	89
Claiborne	14,170	7,263	6,360	88	185	274	11,507	6,258	4,824	55	140	230	8,598	4,632	3,820	146
De Soto	26,812	15,284	9,973	117	740	698	20,440	11,909	7,425	86	557	463	18,713	11,330	6,810	573
Franklin	19,774	12,492	6,802	70	205	205	15,028	9,901	4,779	44	153	151	13,159	9,015	4,034	110
Jackson	15,031	9,967	4,166	175	255	468	11,783	7,967	3,125	140	174	377	9,449	6,647	2,610	192
Lincoln	48,396	26,034	19,364	892	662	1,444	38,655	21,306	15,119	744	526	960	25,649	15,672	9,016	961
*Ouachita	95,284	75,483	12,794	1,511	2,159	3,337	72,181	58,514	8,642	1,062	1,674	2,289	61,043	52,666	6,244	2,133
Red River	7,620	4,195	3,106	25	171	123	5,714	3,338	2,164	3	116	93	5,631	3,130	2,418	83
Union	21,107	14,460	5,224	62	338	1,023	16,632	11,807	3,861	39	254	671	15,221	11,066	3,692	463
Webster	36,967	22,735	12,679	208	687	658	28,753	18,144	9,464	154	558	433	22,737	14,938	7,339	460
District 4	674,381	387,018	239,555	10,782	12,872	24,154	516,527	308,589	173,710	7,859	9,865	16,504	416,117	263,037	136,805	16,275
	100.000%	57.389%	35.522%	1.599%	1.909%	3.582%	100.000%	59.743%	33.630%	1.522%	1.910%	3.195%	80.561%	63.212%	32.877%	3.911%
District 5																
*Ascension	27,546	9,343	16,227	228	241	1,507	20,373	7,600	11,406	169	164	1,034	17,644	6,761	10,152	731
Concordia	18,687	10,275	7,725	122	233	332	14,217	8,108	5,613	100	167	229	11,964	7,222	4,540	202
*East Baton Rouge	298,362	90,253	179,911	9,033	2,498	16,667	231,701	77,923	132,752	7,263	1,980	11,783	172,579	56,989	106,399	9,191
East Carroll	7,459	2,054	5,272	29	43	61	5,901	1,773	4,043	19	27	39	4,709	1,306	3,359	44
East Feliciana	19,539	11,516	7,341	91	262	329	16,183	9,740	5,918	61	198	266	13,600	7,959	5,186	455
*Iberville	24,211	10,705	12,020	185	191	1,110	19,195	9,085	8,870	137	155	948	15,810	7,027	8,424	359
Madison	10,017	3,475	6,363	20	59	100	7,435	2,906	4,391	9	48	81	7,278	2,494	4,674	110
Morehouse	25,629	12,281	12,484	160	370	334	20,062	10,095	9,300	117	279	271	16,922	8,505	8,131	286
*Ouachita	65,084	13,062	48,423	1,277	502	1,820	48,019	11,460	33,648	1,056	385	1,470	38,709	7,849	29,414	1,446
Richland	20,043	11,785	7,603	83	258	314	15,383	9,338	5,546	66	203	230	13,662	8,470	4,961	231

# Splits

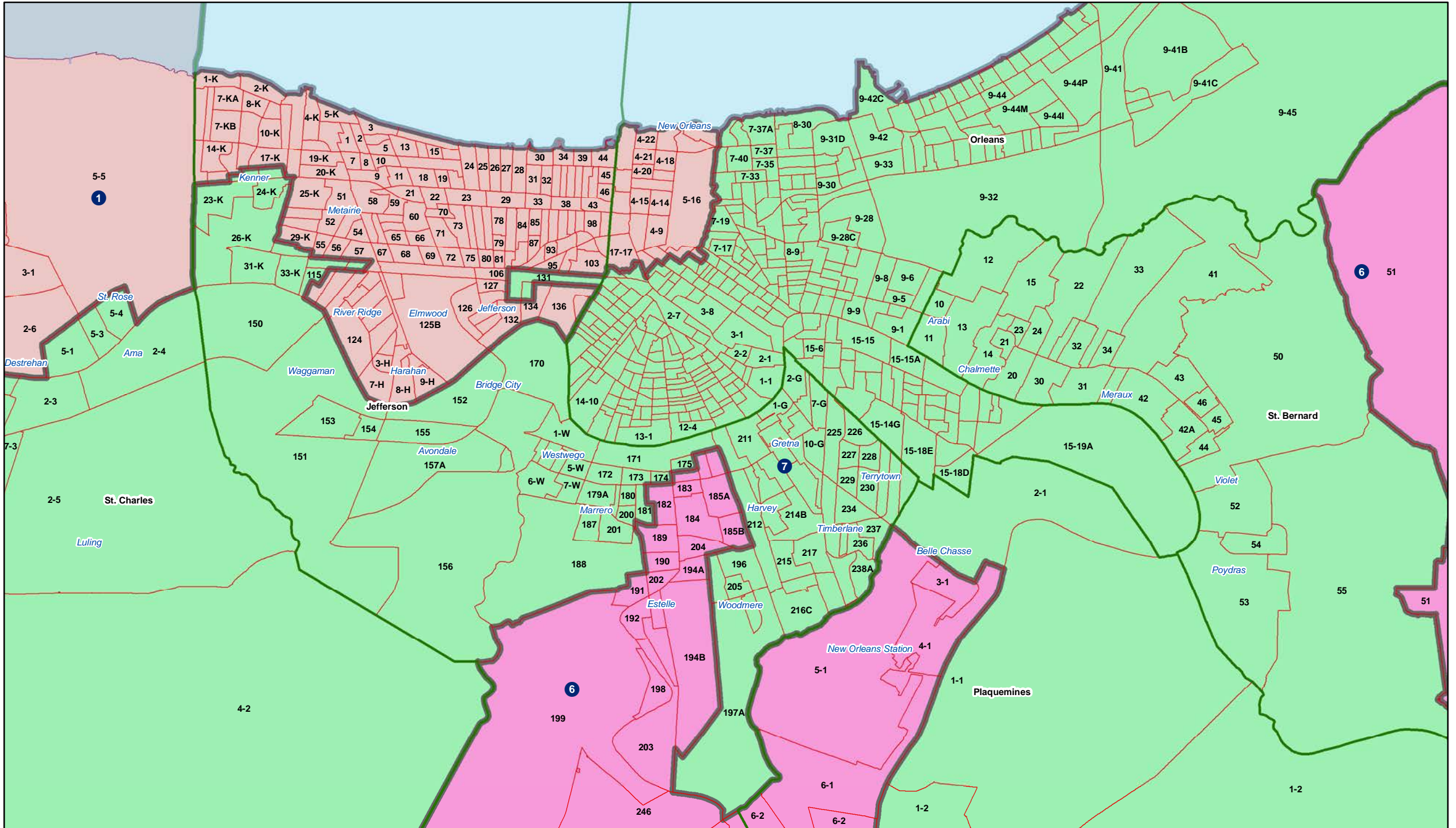
## Plan: SLS 221ES-14 by Sen. Fields

	Total Population	Total White	Total Black	Total Asian	Total American Indian	Total Other	VAP Total	VAP White	VAP Black	VAP Asian	VAP American Indian	VAP Other	Reg Total Dec 2021	Reg White Dec 2021	Reg Black Dec 2021	Reg Other Dec 2021
District 5																
St. Helena	10,920	4,527	6,031	39	134	189	8,463	3,805	4,371	28	109	150	8,321	3,628	4,565	128
St. James	20,192	9,973	9,762	60	82	315	15,505	7,883	7,297	31	64	230	14,966	7,254	7,501	211
*Tangipahoa	48,304	19,543	25,365	579	605	2,212	36,835	16,450	17,992	467	449	1,477	25,439	11,804	12,733	902
Tensas	4,147	1,744	2,312	23	26	42	3,235	1,446	1,728	12	23	26	3,455	1,503	1,917	35
*West Baton Rouge	19,069	8,972	8,927	149	227	794	14,543	7,161	6,541	104	162	575	11,993	6,163	5,607	223
West Carroll	9,751	7,894	1,425	27	180	225	7,532	6,223	1,010	20	136	143	7,038	5,913	1,040	85
West Feliciana	15,310	10,883	3,740	89	225	373	12,783	9,283	2,951	56	174	319	7,407	5,092	2,180	135
District 5	644,270	238,285	360,931	12,194	6,136	26,724	497,365	200,279	263,377	9,715	4,723	19,271	391,496	155,939	220,783	14,774
	100.000%	36.985%	56.022%	1.893%	0.952%	4.148%	100.000%	40.268%	52.954%	1.953%	0.950%	3.875%	78.714%	39.832%	56.395%	3.774%
District 6																
*Jefferson	45,567	26,235	10,923	2,990	1,255	4,164	35,264	21,346	7,718	2,275	951	2,974	29,021	19,127	6,408	3,486
Lafourche	97,557	71,710	15,855	1,025	4,224	4,743	74,619	56,838	11,077	738	2,777	3,189	58,278	48,467	7,164	2,647
*Orleans	164	131	15	5	3	10	145	122	12	3	3	5	93	85	0	8
*Plaquemines	19,382	11,433	4,718	1,110	613	1,508	14,294	8,724	3,326	789	439	1,016	10,903	7,330	2,545	1,028
*St. Bernard	665	504	78	4	26	53	544	413	64	3	21	43	387	325	52	10
St. Tammany	264,570	196,641	38,643	5,774	5,660	17,852	202,228	154,621	26,761	4,075	4,161	12,610	178,779	145,724	21,142	11,913
*Tangipahoa	84,853	61,793	16,514	895	1,849	3,802	64,656	48,755	11,225	633	1,378	2,665	50,817	41,108	7,792	1,917
Terrebonne	109,580	69,934	23,147	1,743	8,637	6,119	82,505	55,631	15,796	1,239	5,750	4,089	61,720	45,395	11,566	4,759
Washington	45,463	29,943	13,434	216	736	1,134	34,951	23,743	9,732	154	561	761	27,587	18,835	8,102	650
District 6	667,801	468,324	123,327	13,762	23,003	39,385	509,206	370,193	85,711	9,909	16,041	27,352	417,585	326,396	64,771	26,418
	100.000%	70.129%	18.468%	2.061%	3.445%	5.898%	100.000%	72.700%	16.832%	1.946%	3.150%	5.371%	82.007%	78.163%	15.511%	6.326%
District 7																
*Jefferson	161,112	45,872	84,199	8,607	2,414	20,020	121,896	37,965	61,609	6,782	1,858	13,682	91,796	29,800	50,420	11,576
*Orleans	357,010	104,576	217,406	11,805	3,331	19,892	285,034	92,804	164,924	9,771	2,686	14,849	237,142	75,424	140,709	21,009
*Plaquemines	4,133	2,854	710	207	84	278	3,040	2,132	531	136	61	180	3,005	2,183	589	233
*St. Bernard	43,099	23,993	12,231	1,377	921	4,577	31,231	18,579	7,880	979	667	3,126	25,266	17,908	5,445	1,913
*St. Charles	32,662	19,680	10,321	490	569	1,602	24,551	15,289	7,405	300	426	1,131	21,697	14,085	6,615	997
*St. John the Baptist	38,660	11,798	23,969	382	390	2,121	29,509	9,857	17,551	305	298	1,498	26,377	8,549	16,508	1,320
District 7	636,676	208,773	348,836	22,868	7,709	48,490	495,261	176,626	259,900	18,273	5,996	34,466	405,283	147,949	220,286	37,048
	100.000%	32.791%	54.790%	3.592%	1.211%	7.616%	100.000%	35.663%	52.477%	3.690%	1.211%	6.959%	81.832%	36.505%	54.354%	9.141%

# Supreme Court

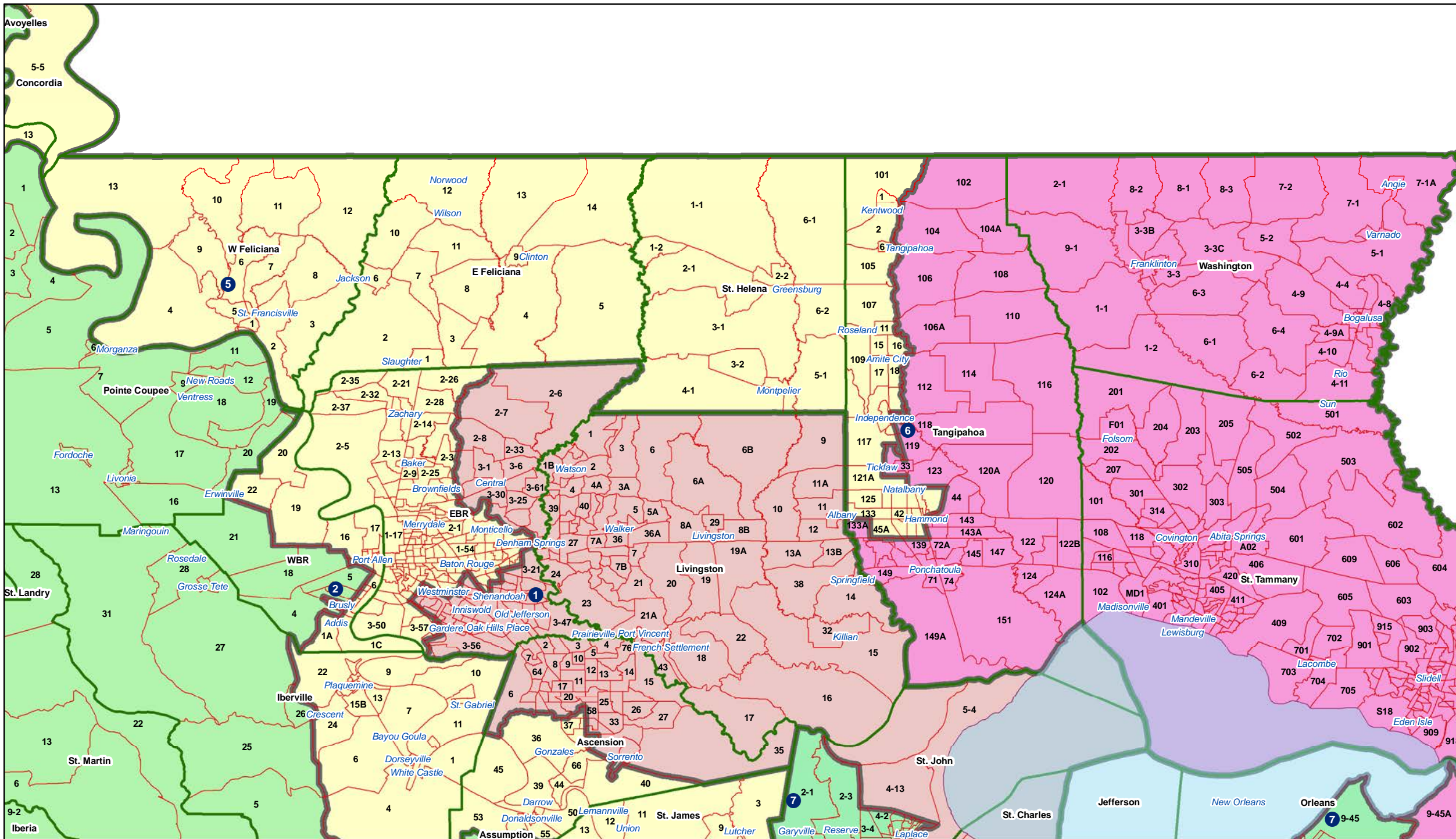


# Jefferson Orleans

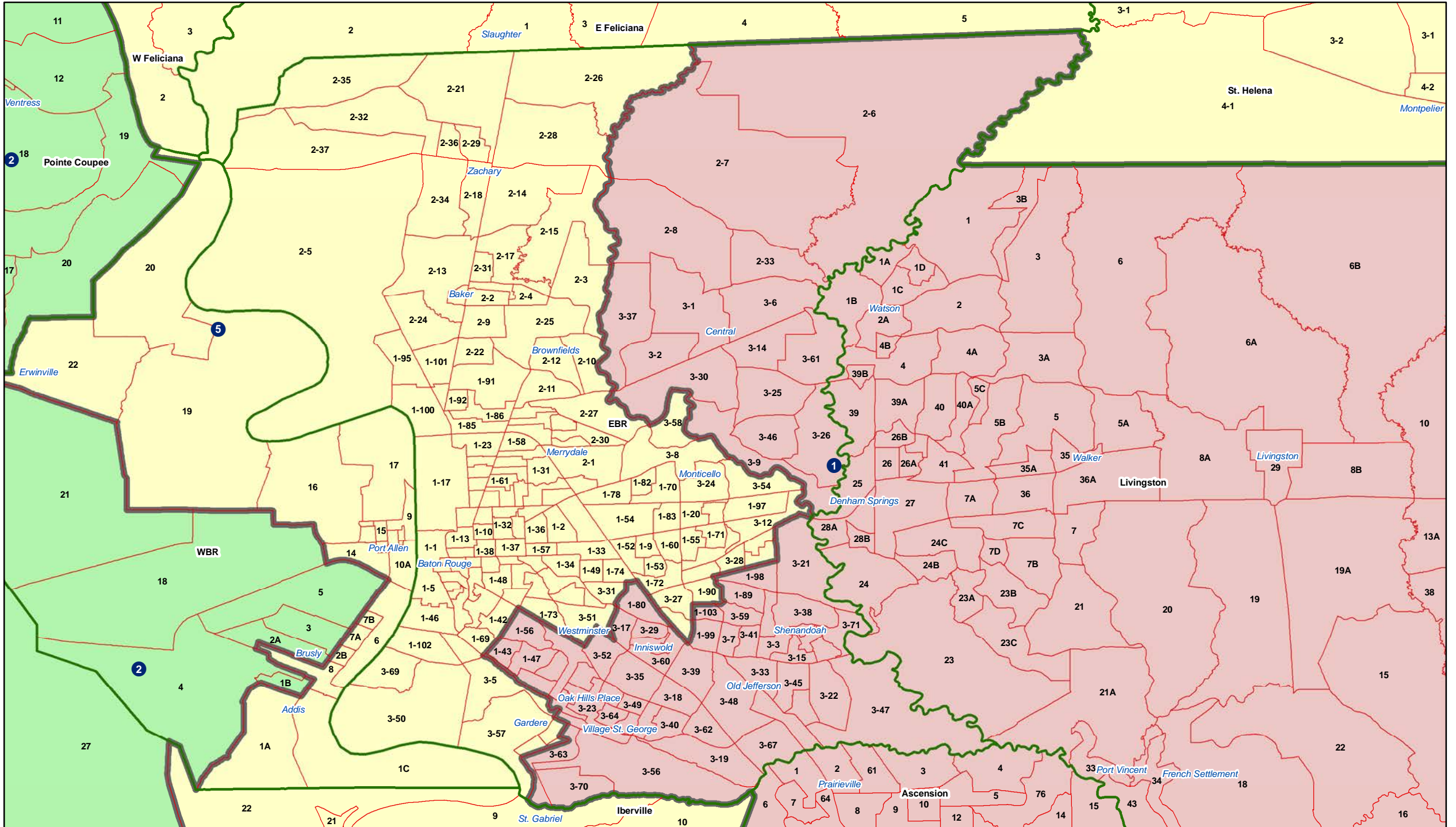




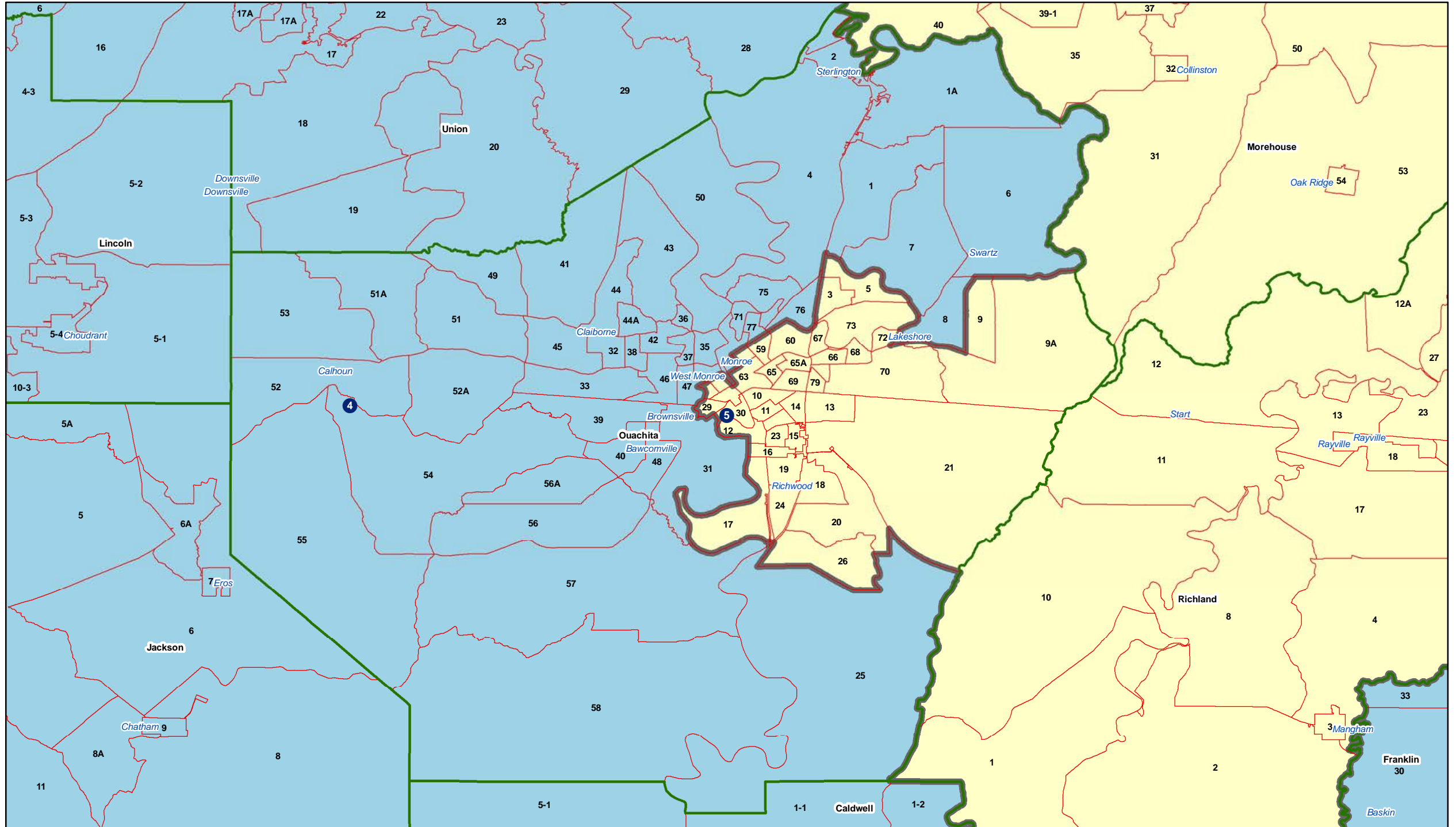
# Florida Parishes



# Baton Rouge



# Ouachita



# Acadiana Bayou River

