

2022 First Extraordinary Session

HOUSE BILL NO. 7

BY REPRESENTATIVES MOORE, FISHER, AND JEFFERSON

REAPPORTIONMENT/CONGRESS: Provides relative to the districts for members of the United States Congress (Item #3)

1 AN ACT

2 To enact R.S. 18:1276 and to repeal R.S. 18:1276.1, relative to congressional districts; to
3 provide for the redistricting of Louisiana's congressional districts; to provide with
4 respect to positions and offices, other than congressional, which are based upon
5 congressional districts; to provide for the effectiveness; and to provide for related
6 matters.

7 Be it enacted by the Legislature of Louisiana:

8 Section 1. R.S. 18:1276 is hereby enacted to read as follows:

9 §1276. Congressional districts

10 Louisiana shall be divided into six congressional districts, and the qualified
11 electors of each district shall elect one representative to the United States House of
12 Representatives. The districts shall be composed as follows:

13 (1) District 1 is composed of Precincts 1, 2, 3, 4, 5, 7, 8, 9, 10, 11, 12, 13, 14,
14 15, 16, 17, 18, 19, 20, 21, 22, 23, 24, 25, 26, 27, 28, 29, 30, 31, 32, 33, 34, 35, 36, 37,
15 38, 39, 40, 41, 42, 43, 44, 45, 46, 51, 52, 53, 54, 55, 56, 57, 58, 59, 60, 61, 62, 63, 64,
16 65, 66, 67, 68, 69, 70, 71, 72, 73, 74, 75, 76, 77, 78, 79, 80, 81, 82, 83, 84, 85, 86, 87,
17 88, 89, 90, 91, 92, 93, 94, 95, 96, 97, 98, 99, 100, 101, 102, 103, 105, 106, 117, 118,
18 119, 120, 121, 122, 123, 124, 125A, 125B, 126, 127, 128, 129, 130, 131, 132, 133,
19 134, 136, 138, 190, 191, 192, 193A, 193B, 194A, 194B, 198, 199, 202, 203, 246,
20 247, 248, 1-GI, 1-H, 2-H, 3-H, 4-H, 5-H, 6-H, 7-H, 8-H, 9-H, 1-K, 2-K, 3-K, 4-K,

1 5-K, 6-KA, 6-KB, 7-KA, 7-KB, 8-K, 9-K, 10-K, 11-K, 12-K, 13-KA, 13-KB, 14-K,
2 15-K, 16-K, 17-K, 18-K, 19-K, 20-K, 25-K, 27-K, 28-K, 29-K, 34-K, 35-K, and 1-L
3 of Jefferson Parish; Lafourche Parish; Precincts 3-14, 3-18, 3-19, 3-20, 4-6, 4-7, 4-8,
4 4-9, 4-11, 4-14, 4-15, 4-17, 4-17A, 4-18, 4-20, 4-21, 4-22, 4-23, 5-10, 5-11, 5-12,
5 5-13, 5-15, 5-16, 5-17, 5-18, 6-9, 9-45, 9-45A, 13-1, 13-2, 13-3, 13-4, 13-5, 13-6,
6 13-7, 13-8, 13-9, 13-10, 13-11, 13-12, 13-13, 13-14, 13-15, 13-16, 14-1, 14-2, 14-3,
7 14-4, 14-5, 14-6, 14-7, 14-8, 14-9, 14-10, 14-11, 14-12, 14-13A, 14-14, 14-15,
8 14-16, 14-17, 14-18A, 14-19, 14-20, 14-21, 16-1, 16-1A, 16-2, 16-3, 16-4, 16-5,
9 16-6, 16-7, 16-8, 17-1, 17-2, 17-3, 17-4, 17-5, 17-6, 17-7, 17-17, 17-18, 17-18A,
10 17-19, and 17-20 of Orleans Parish; Plaquemines Parish; St. Bernard Parish;
11 Precincts 305, 307, 308, 309, 312, 313, 401, 403, 405, 406, 407, 408, 409, 410, 411,
12 412, 414, 415, 416, 417, 420, 421, 422, 426, 427, 429, 430, 503, 504, 601, 602, 603,
13 604, 605, 606, 609, 701, 702, 703, 704, 705, 706, 801, 802, 803, 804, 805, 806, 807,
14 808, 809, 810, 811, 812, 813, 814, 815, 816, 817, 818, 901, 902, 903, 904, 905, 906,
15 907, 909, 910, 911, 912, 913, 914, 915, 916, 917, 918, 921, 922, A01, A02, A03,
16 A04, M01, M02, M03, M04, M05, M06, M07, M08, M09, M10, M11, M12, P01,
17 S01, S02, S03, S04, S05, S06, S07, S08, S09, S10, S11, S13, S15, S16, S17, S18,
18 S19, S20, S21, S22, S23, S24, and S25 of St. Tammany Parish; and Precincts 11, 12,
19 15, 16, 17, 18, 19, 20, 21, 23, 25, 27, 29, 31, 32, 34, 35, 36, 38, 41, 43, 45, 46, 48, 52,
20 53, 54, 55, 56, 57, 58, 59, 60, 61, 63, 69, 71, 72, 83, 84, 85, 86, 87, 88, 89, 90, 110,
21 and 111 of Terrebonne Parish.

22 (2) District 2 is composed of Precincts 6, 28, 30, 31, 32, 34, 36, 37, 39, 40,
23 42, 43, 44, 45, 47, 48, 50, 51, 52, 53, 54, 55, 57, 62, 63, 65, 66, and 71 of Ascension
24 Parish; Iberville Parish; Precincts 104, 108, 115, 116, 150, 151, 152, 153, 154, 155,
25 156, 157A, 157B, 170, 171, 172, 173, 174, 175, 176, 177, 178, 179A, 179B, 180,
26 181, 182, 183, 184, 185A, 185B, 187, 188, 189, 195, 196, 197A, 197B, 200, 201,
27 204, 205, 210, 211, 212, 213A, 213B, 213C, 214A, 214B, 215, 216A, 216B, 216C,
28 217, 225, 226, 227, 228, 229, 230, 231, 232A, 232B, 234, 235, 236, 237, 238A,
29 238B, 1-G, 2-G, 3-G, 4-G, 5-G, 6-G, 7-G, 8-G, 9-G, 10-G, 11-G, 12-G, 13-G, 21-K,

1 22-K, 23-K, 24-K, 26-K, 30-K, 31-K, 33-K, 1-W, 2-W, 3-W, 4-W, 5-W, 6-W, and
2 7-W of Jefferson Parish; Precincts 13, 14, 15, 16, 17, 18, 19, 20, 21, 22, 23, 24, 51,
3 52, 53, 54, 55, 56, 57, 58, 59, 60, 61, 62, 63, and 68 of Lafayette Parish; Precincts
4 1-1, 1-2, 1-5, 1-6, 2-1, 2-2, 2-4, 2-6, 2-7, 3-1, 3-8, 3-9, 3-12, 3-15, 4-2, 4-3, 4-5, 5-1,
5 5-2, 5-3, 5-5, 5-7, 5-8, 5-9, 6-1, 6-2, 6-4, 6-6, 6-7, 6-8, 7-1, 7-2, 7-4, 7-5, 7-6, 7-7,
6 7-8, 7-9A, 7-10, 7-11, 7-12, 7-13, 7-14, 7-15, 7-16, 7-17, 7-18, 7-19, 7-20, 7-21,
7 7-23, 7-24, 7-25, 7-25A, 7-26, 7-27, 7-27B, 7-28, 7-28A, 7-29, 7-30, 7-32, 7-33,
8 7-35, 7-37, 7-37A, 7-40, 7-41, 7-42, 8-1, 8-2, 8-4, 8-6, 8-7, 8-8, 8-9, 8-12, 8-13,
9 8-14, 8-15, 8-19, 8-20, 8-21, 8-22, 8-23, 8-24, 8-25, 8-26, 8-27, 8-28, 8-30, 9-1, 9-3,
10 9-4, 9-5, 9-6, 9-7, 9-8, 9-9, 9-10, 9-11, 9-12, 9-13, 9-14, 9-15, 9-16, 9-17, 9-19, 9-21,
11 9-23, 9-25, 9-26, 9-28, 9-28C, 9-29, 9-30, 9-30A, 9-31, 9-31A, 9-31B, 9-31D, 9-32,
12 9-33, 9-34A, 9-35, 9-35A, 9-36, 9-36B, 9-37, 9-38, 9-38A, 9-39, 9-39B, 9-40,
13 9-40A, 9-40C, 9-41, 9-41A, 9-41B, 9-41C, 9-41D, 9-42, 9-42C, 9-43A, 9-43B,
14 9-43C, 9-43E, 9-43F, 9-43G, 9-43H, 9-43I, 9-43J, 9-43K, 9-43L, 9-43M, 9-43N,
15 9-44, 9-44A, 9-44B, 9-44D, 9-44E, 9-44F, 9-44G, 9-44I, 9-44J, 9-44L, 9-44M,
16 9-44N, 9-44O, 9-44P, 9-44Q, 10-3, 10-6, 10-7, 10-8, 10-9, 10-11, 10-12, 10-13,
17 10-14, 11-2, 11-3, 11-4, 11-5, 11-8, 11-9, 11-10, 11-11, 11-12, 11-13, 11-14, 11-17,
18 12-1, 12-2, 12-3, 12-4, 12-5, 12-6, 12-7, 12-8, 12-9, 12-10, 12-11, 12-12, 12-13,
19 12-14, 12-16, 12-17, 12-19, 14-23, 14-24A, 14-25, 14-26, 15-1, 15-2, 15-3, 15-5,
20 15-6, 15-8, 15-9, 15-10, 15-11, 15-12, 15-12A, 15-13, 15-13A, 15-13B, 15-14,
21 15-14A, 15-14B, 15-14C, 15-14D, 15-14E, 15-14F, 15-14G, 15-15, 15-15A, 15-15B,
22 15-16, 15-17, 15-17A, 15-17B, 15-18, 15-18A, 15-18B, 15-18C, 15-18D, 15-18E,
23 15-18F, 15-19, 15-19A, 15-19B, 15-19C, 16-9, 17-8, 17-9, 17-10, 17-11, 17-12,
24 17-13, 17-13A, 17-14, 17-15, and 17-16 of Orleans Parish; St. Charles Parish;
25 St. James Parish; St. John the Baptist Parish; Precincts 3, 4, 5, 6, 7, 8, 9, 10, 11, 12,
26 13, 14, 15, 16, 17, 18, 19, 20, 21, 22, 23, 24, 25, 26, 27, 28, and 29 of St. Martin
27 Parish; and West Baton Rouge Parish.
28 (3) District 3 is composed of Acadia Parish; Assumption Parish; Precincts
29 162E, 162W, 163, 164, 165, 166E, 166W, 167, 260, 261, 262, 300, 301, 302, 303,

1 304, 305, 306, 307, 308, 309E, 309W, 310, 311, 312, 313E, 313W, 314, 315E,
2 315W, 316E, 316W, 317, 318, 319N, 319S, 320E, 320W, 321, 322, 323, 324, 325,
3 326, 327, 328, 329, 330, 331, 332N, 332S, 333, 334, 335, 336, 337, 338, 339, 340,
4 360, 361, 362, 363, 364, 365, 366, 367, 368, 369, 370, 371N, 371S, 372, 403, 404,
5 405, 406, 407, 408, 440, 441, 460E, 461, 463, 464, 466E, 466W, 467, 468, 469, 664,
6 800, 801, 860N, 860S, 861E, and 861W of Calcasieu Parish; Cameron Parish; Iberia
7 Parish; Jefferson Davis Parish; Precincts 1, 2, 3, 4, 5, 6, 7, 8, 9, 10, 11, 12, 25, 26,
8 27, 28, 29, 30, 31, 32, 33, 34, 35, 36, 37, 38, 39, 40, 41, 42, 43, 44, 45, 46, 47, 48, 49,
9 64, 65, 66, 67, 69, 70, 71, 72, 73, 74, 75, 76, 77, 78, 79, 80, 81, 82, 83, 84, 85, 86, 87,
10 88, 89, 90, 91, 92, 93, 94, 95, 96, 97, 98, 99, 100, 101, 102, 103, 104, 105, 106, 107,
11 108, 109, 110, 111, 112, 113, 114, 115, 116, 117, 118, 119, 120, 121, 122, 123, 124,
12 125, 126, 127, and 128 of Lafayette Parish; Precincts 7, 7A, 10, 13, 14, 15, 16, 17,
13 18, 24, 27, 28, 29, 30, 31, 32, 33, 34, 35, 36, 37, 38, 39, 40, 41, 42, 43, 44, 45, 46, 47,
14 48, 49, 50, 51, and 52 of St. Landry Parish; Precincts 1 and 2 of St. Martin Parish;
15 St. Mary Parish; Precincts 1, 4, 5, 7, 8, 9, 10, 13, 14, 49, 51, 64, 65, 67, 68, 73, 74,
16 76, and 82 of Terrebonne Parish; and Vermilion Parish.

17 (4) District 4 is composed of Allen Parish; Beauregard Parish; Bienville
18 Parish; Precinct 2-23 of Bossier Parish; Precincts 8, 9, 10, 11, 12, 13, 14, 15, 16, 17,
19 20, 21, 22, 24, 26, 27, 48, 49, 56, 66, 68, 72, 75, 76, 77, 89, 92, 93, 95, 97, 98, 101,
20 102, 103, 104, 105, 107, 108, 109, 110, 112, 113, 115, 123, 125, 126, 127, 128, 129,
21 132, 133, 134, 136A, 136B, 138, 158, 160, 161, 162, 163, 165, and 166 of Caddo
22 Parish; Precincts 160E, 160W, 161, 400, 401, 402, 460W, 465, 560, 561, 562, 600,
23 601, 602, 603, 660, 661, 662, 663, 700, 701, 702, 703, 760, 761, and 762 of
24 Calcasieu Parish; Caldwell Parish; Catahoula Parish; De Soto Parish; Evangeline
25 Parish; Franklin Parish; Grant Parish; Jackson Parish; La Salle Parish; Lincoln
26 Parish; Natchitoches Parish; Precincts 2, 4, 25, 26, 32, 33, 34, 35, 36, 37, 38, 39, 40,
27 41, 42, 43, 44, 44A, 45, 46, 47, 48, 49, 50, 51, 51A, 52, 52A, 53, 54, 55, 56, 56A, 57,
28 58, 59, 60, 61, 62, 63, 64, 71, 75, 76, 77, and 78 of Ouachita Parish; Rapides Parish;
29 Red River Parish; Richland Parish; Sabine Parish; Vernon Parish; and Winn Parish.

1 (5) District 5 is composed of Avoyelles Parish; Precincts 1-1, 1-2, 1-3, 1-3A,
2 1-3B, 1-4, 1-5, 2-1, 2-2, 2-3, 2-3A, 2-4, 2-5A, 2-6, 2-7, 2-8, 2-9, 2-10, 2-11, 2-11A,
3 2-12A, 2-12B, 2-12C, 2-13, 2-14, 2-15, 2-16, 2-17A, 2-17B, 2-18B, 2-18C, 2-18D,
4 2-18E, 2-18F, 2-18G, 2-19, 2-20, 2-21A, 2-21B, 2-21C, 2-21D, 2-22A, 2-22B,
5 2-22C, 3-1, 3-2, 3-3, 3-4, 4-1A, 4-2, 4-3A, 4-3B, 4-3C, 4-3D, 4-4A, 4-4B, 4-5A,
6 4-6A, 4-6B, 4-7A, 4-7B, 4-8A, 4-8B, 4-8C, 4-8D, 4-8E, 4-8G, 4-9, 4-10, 4-11A,
7 4-11B, and 4-11C of Bossier Parish; Precincts 1, 2, 3, 4, 5A, 5B, 6, 7, 23, 25, 28, 29,
8 30, 31, 32, 34, 35, 36, 37, 38, 39, 40, 41, 43, 44, 45, 46, 47, 50, 51, 52, 53, 54, 55, 57,
9 58, 59, 60, 61, 62, 63, 64, 65, 67, 69, 70, 71, 73, 74, 78, 79, 80, 81, 82, 83, 84, 85, 86,
10 87, 88, 90, 91, 94, 99, 100, 106, 111, 114, 122, 135, 137, 139, 140, 142, 143, 144,
11 145, 146, 149, 151, 154, 155, 156, and 157 of Caddo Parish; Claiborne Parish;
12 Concordia Parish; Precincts 1-1, 1-2, 1-3, 1-4, 1-5, 1-6, 1-10, 1-11, 1-13, 1-14, 1-15,
13 1-16, 1-17, 1-18, 1-19, 1-20, 1-21, 1-22, 1-23, 1-24, 1-25, 1-26, 1-27, 1-28, 1-29,
14 1-30, 1-31, 1-32, 1-36, 1-37, 1-38, 1-45, 1-50, 1-51, 1-54, 1-57, 1-58, 1-61, 1-62,
15 1-63, 1-67, 1-68, 1-70, 1-77, 1-78, 1-82, 1-83, 1-84, 1-85, 1-86, 1-88, 1-91, 1-92,
16 1-93, 1-94, 1-95, 1-97, 1-100, 1-101, 1-104, 2-1, 2-2, 2-3, 2-4, 2-5, 2-9, 2-10, 2-11,
17 2-12, 2-13, 2-14, 2-15, 2-16, 2-17, 2-18, 2-19, 2-20, 2-21, 2-22, 2-23, 2-24, 2-25,
18 2-26, 2-27, 2-28, 2-29, 2-30, 2-31, 2-32, 2-34, 2-35, 2-36, 2-37, 3-8, 3-24, and 3-54
19 of East Baton Rouge Parish; East Carroll Parish; East Feliciana Parish; Madison
20 Parish; Morehouse Parish; Precincts 1, 1A, 3, 5, 6, 7, 8, 9, 9A, 10, 11, 12, 13, 14, 15,
21 16, 17, 18, 19, 20, 21, 22, 23, 24, 27, 27A, 28, 29, 30, 31, 65, 65A, 66, 67, 68, 69, 70,
22 72, 73, 74, and 79 of Ouachita Parish; Pointe Coupee Parish; Precincts 1, 2, 3, 4, 5,
23 6, 8, 9, 11, 12, 19, 20, 21, 22, 23, 25, and 26 of St. Landry Parish; Tensas Parish;
24 Union Parish; Webster Parish; West Carroll Parish; and West Feliciana Parish.

25 (6) District 6 is composed of Precincts 1, 2, 3, 4, 5, 7, 8, 9, 10, 11, 12, 13, 14,
26 15, 16, 17, 18, 20, 21, 22, 23, 24, 25, 26, 27, 33, 35, 41, 58, 61, 64, 72, 73, 76, 77,
27 and 78 of Ascension Parish; Precincts 1-7, 1-8, 1-9, 1-12, 1-33, 1-34, 1-35, 1-39,
28 1-40, 1-41, 1-42, 1-43, 1-44, 1-46, 1-47, 1-48, 1-49, 1-52, 1-53, 1-55, 1-56, 1-59,
29 1-60, 1-64, 1-65, 1-66, 1-69, 1-71, 1-72, 1-73, 1-74, 1-75, 1-76, 1-79, 1-80, 1-81,

1 1-87, 1-89, 1-90, 1-98, 1-99, 1-102, 1-103, 1-105, 1-107, 2-6, 2-7, 2-8, 2-33, 3-1, 3-2,
2 3-3, 3-4, 3-5, 3-6, 3-7, 3-9, 3-10, 3-11, 3-12, 3-13, 3-14, 3-15, 3-16, 3-17, 3-18, 3-19,
3 3-20, 3-21, 3-22, 3-23, 3-25, 3-26, 3-27, 3-28, 3-29, 3-30, 3-31, 3-32, 3-33, 3-34,
4 3-35, 3-36, 3-37, 3-38, 3-39, 3-40, 3-41, 3-43, 3-44, 3-45, 3-46, 3-47, 3-48, 3-49,
5 3-50, 3-51, 3-52, 3-53, 3-55, 3-56, 3-57, 3-58, 3-59, 3-60, 3-61, 3-62, 3-63, 3-64,
6 3-65, 3-66, 3-67, 3-68, 3-69, 3-70, 3-71, and 3-72 of East Baton Rouge Parish;
7 Livingston Parish; St. Helena Parish; Precincts 101, 102, 103, 104, 105, 106, 107,
8 108, 110, 111, 112, 113, 114, 115, 116, 118, 201, 202, 203, 204, 205, 206, 207, 301,
9 302, 303, 304, 306, 310, 314, 402, 404, 413, 418, 419, 501, 502, 505, C01, C02, C03,
10 C04, C05, C06, C07, C08, C09, C10, C11, F01, and MD1 of St. Tammany Parish;
11 Tangipahoa Parish; and Washington Parish.

12 Section 2. R.S. 18:1276.1 is hereby repealed in its entirety.

13 Section 3.(A) The precincts referenced in this Act are those precincts identified as
14 Voting Districts (VTDs) in the 2020 Census Redistricting TIGER/Line Shapefiles for the
15 State of Louisiana as validated through the data verification program of the Louisiana House
16 of Representatives and the Louisiana Senate and available on the legislature's website on the
17 effective date of this Section.

18 (B) When a precinct referenced in this Act has been subdivided by action of the
19 parish governing authority on a nongeographic basis or subdivided by action of the parish
20 governing authority on a geographic basis in accordance with the provisions of R.S.
21 18:532.1, the enumeration in this Act of the general precinct designation shall include all
22 nongeographic and all geographic subdivisions thereof, however such subdivisions may be
23 designated.

24 (C) The territorial limits of the districts as provided in this Act shall continue in
25 effect until changed by law regardless of any subsequent change made to the precincts by
26 the parish governing authority.

27 Section 4. The provisions of this Act shall not reduce the term of office of any
28 person holding any position or office on the effective date of this Section for which the
29 appointment or election is based upon a congressional district as composed pursuant to R.S.

1 18:1276.1. Any position or office that is filled by appointment or election based on a
2 congressional district and that is to be filled after January 3, 2023, shall be appointed or
3 elected from a district as it is described in Section 1 of this Act.

4 Section 5.(A) Solely for the purposes of qualifying for election and the election of
5 representatives to the United States Congress at the regularly scheduled election for
6 representatives to the congress in 2022, the provisions of Section 1 of this Act shall become
7 effective upon signature of this Act by the governor or, if not signed by the governor, upon
8 expiration of the time for bills to become law without signature by the governor, as provided
9 in Article III, Section 18 of the Constitution of Louisiana. If this Act is vetoed by the
10 governor and subsequently approved by the legislature, the provisions of Section 1 of this
11 Act shall become effective on the day following such approval for the purposes established
12 in this Subsection.

13 (B) For subsequent elections of representatives to the United States Congress and
14 for all other purposes, the provisions of Section 1 of this Act shall become effective at noon
15 on January 3, 2023.

16 (C) The provisions of Section 2 of this Act shall become effective at noon on
17 January 3, 2023.

18 (D) The provisions of this Section and Sections 3 and 4 of this Act shall become
19 effective upon signature of this Act by the governor or, if not signed by the governor, upon
20 expiration of the time for bills to become law without signature by the governor, as provided
21 in Article III, Section 18 of the Constitution of Louisiana. If this Act is vetoed by the
22 governor and subsequently approved by the legislature, the provisions of this Section and
23 Sections 3 and 4 of this Act shall become effective on the day following such approval.

DIGEST

The digest printed below was prepared by House Legislative Services. It constitutes no part of the legislative instrument. The keyword, one-liner, abstract, and digest do not constitute part of the law or proof or indicia of legislative intent. [R.S. 1:13(B) and 24:177(E)]

HB 7 Original

2022 First Extraordinary Session

Moore

Abstract: Provides for the redistricting of the state's congressional districts and provides for the composition of each of the six congressional districts. Effective for election purposes only for the regular congressional elections in 2022 and for all other purposes at noon on Jan. 3, 2023.

Statistical summaries of proposed law, including district variances from the ideal population of 776,292 and the range of those variances, as well as maps illustrating proposed district boundaries accompany this digest. (*Attached to the bill version on the internet.*)

Present U.S. Constitution (14th Amendment) provides that representatives in congress shall be apportioned among the several states according to their respective numbers, counting the whole number of persons in each state. The U.S. Supreme Court has held that the population of congressional districts in the same state must be as nearly equal in population as practicable.

Proposed law redraws district boundaries for the six congressional districts, effective upon signature of governor or lapse of time for gubernatorial action for purposes of the 2022 election.

Proposed law retains present districts until noon on January 3, 2023, at which time present law is repealed and proposed districts are effective for all other purposes.

Proposed law specifies that precincts referenced in district descriptions are those precincts identified as Voting Districts (VTDs) in the 2020 Census Redistricting TIGER/Line Shapefiles for the state of La. as validated through the data verification program of the La. legislature. Also specifies that if any such precinct has been subdivided by action of the parish governing authority on a nongeographic basis or subdivided by action of the parish governing authority on a geographic basis in accordance with present law, the enumeration of the general precinct designation shall include all nongeographic and all geographic subdivisions thereof. Further provides that the territorial limits of the districts as enacted shall continue in effect until changed by law regardless of any subsequent change made to the precincts by the parish governing authority.

Proposed law specifies that proposed law does not reduce the term of office of any person holding any position or office on the effective date of proposed law for which the appointment or election is based upon a congressional district as composed pursuant to present law. Specifies that any position or office filled after Jan. 3, 2023, for which the appointment or election is based on a congressional district shall be appointed or elected from a district as it is described in proposed law.

Population data in the summaries accompanying this digest are derived from 2020 Census Redistricting Data (Public Law 94-171), Summary File for Louisiana. Population data, statistical information, and maps are supplied for purposes of information and analysis and comprise no part of proposed law.

Effective for election purposes only for the regular congressional elections in 2022; effective for all other purposes at noon on January 3, 2023.

(Adds R.S. 18:1276; Repeals R.S. 18:1276.1)

Plan Statistics

Plan: 221ES-39 (Moore)

<u>Districts:</u>	<u># of Members</u>	<u>Actual Population</u>	<u>Ideal Population</u>	<u>Absolute Deviation</u>	<u>Relative Deviation</u>
District 1	1	774,958	776,292	-1,334	-0.172%
District 2	1	776,794	776,292	502	0.065%
District 3	1	775,561	776,292	-731	-0.094%
District 4	1	775,955	776,292	-337	-0.043%
District 5	1	779,153	776,292	2,861	0.369%
District 6	1	775,336	776,292	-956	-0.123%
Grand Total:	6	4,657,757	4,657,752		

Ideal Population Per Member: 776292
 Number of Districts for Plan Type: 6

Range of District Populations: 774,958 to 779,153

Absolute Mean Deviation: 699
 Absolute Range: -1,334 to 2,861
 Absolute Overall Range: 4,195

Relative Mean Deviation: 0.14%
 Relative Range: -0.17% to 0.37%
 Relative Overall Range: 0.54%

<i>Ideal - Actual:</i>	-5
<i>Remainder:</i>	5
<i>Unassigned Population:</i>	0

Total Population

Plan: 221ES-39 (Moore)

	Total Population	Total White	Total Black	Total Asian	Total American Indian	Total Other	Total Hispanic	VAP Total	VAP White	VAP Black	VAP Asian	VAP American Indian	VAP Other	VAP Hispanic Total
District 1	774,958	517,196	132,669	25,947	23,047	76,099	95,868	603,395	419,246	94,127	19,260	16,292	54,470	67,680
	100.000%	66.739%	17.120%	3.348%	2.974%	9.820%	12.371%	100.000%	69.481%	15.600%	3.192%	2.700%	9.027%	11.217%
District 2	776,794	265,700	428,420	22,637	8,821	51,216	65,691	598,704	220,452	317,437	17,925	6,721	36,169	45,502
	100.000%	34.205%	55.152%	2.914%	1.136%	6.593%	8.457%	100.000%	36.822%	53.021%	2.994%	1.123%	6.041%	7.600%
District 3	775,561	516,605	193,812	16,500	12,320	36,324	42,562	586,403	405,500	135,241	11,846	8,966	24,850	28,383
	100.000%	66.610%	24.990%	2.127%	1.589%	4.684%	5.488%	100.000%	69.150%	23.063%	2.020%	1.529%	4.238%	4.840%
District 4	775,955	520,168	196,951	12,234	19,709	26,893	33,744	596,533	409,976	142,478	9,157	14,817	20,105	24,593
	100.000%	67.036%	25.382%	1.577%	2.540%	3.466%	4.349%	100.000%	68.726%	23.884%	1.535%	2.484%	3.370%	4.123%
District 5	779,153	308,619	425,210	9,131	10,139	26,054	31,526	591,357	249,964	308,649	6,795	7,669	18,280	21,619
	100.000%	39.610%	54.573%	1.172%	1.301%	3.344%	4.046%	100.000%	42.270%	52.193%	1.149%	1.297%	3.091%	3.656%
District 6	775,336	529,364	166,057	20,839	13,024	46,052	53,158	594,156	419,373	117,837	15,433	9,775	31,738	35,885
	100.000%	68.275%	21.417%	2.688%	1.680%	5.940%	6.856%	100.000%	70.583%	19.833%	2.597%	1.645%	5.342%	6.040%
Grand Total	4,657,757	2,657,652	1,543,119	107,288	87,060	262,638	322,549	3,570,548	2,124,511	1,115,769	80,416	64,240	185,612	223,662
	100.000%	57.059%	33.130%	2.303%	1.869%	5.639%	6.925%	100.000%	59.501%	31.249%	2.252%	1.799%	5.198%	6.264%

Voter Registration

Plan: 221ES-39 (Moore)

	Reg Total Dec 2021	Reg White Dec 2021	Reg Black Dec 2021	Reg Other Dec 2021	Reg Dem Total Dec 2021	Reg Rep Total Dec 2021	Reg Other Total Dec 2021
District 1	484,160	371,746	66,868	45,546	152,514	184,895	146,751
	80.239%	76.782%	13.811%	9.407%	31.501%	38.189%	30.310%
District 2	499,022	187,436	274,734	36,852	292,663	81,777	124,582
	83.350%	37.561%	55.054%	7.385%	58.647%	16.387%	24.965%
District 3	478,130	351,359	106,281	20,490	165,675	183,641	128,814
	81.536%	73.486%	22.228%	4.285%	34.651%	38.408%	26.941%
District 4	478,473	349,617	109,382	19,474	158,325	198,611	121,537
	80.209%	73.069%	22.861%	4.070%	33.090%	41.509%	25.401%
District 5	480,415	203,756	260,443	16,216	251,614	117,298	111,503
	81.239%	42.412%	54.212%	3.375%	52.374%	24.416%	23.210%
District 6	474,146	364,075	85,040	25,031	140,213	202,558	131,375
	79.802%	76.785%	17.935%	5.279%	29.572%	42.721%	27.708%
Grand Total	2,894,346	1,827,989	902,748	163,609	1,161,004	968,780	764,562

Splits

Plan: 221ES-39 (Moore)

	Total Population	Total White	Total Black	Total Asian	Total American Indian	Total Other	VAP Total	VAP White	VAP Black	VAP Asian	VAP American Indian	VAP Other	Reg Total Dec 2021	Reg White Dec 2021	Reg Black Dec 2021	Reg Other Dec 2021
District 1																
*Jefferson	265,712	166,234	39,643	13,256	4,945	41,634	211,339	138,599	28,801	10,022	3,720	30,197	162,607	123,413	18,122	21,072
Lafourche	97,557	71,710	15,855	1,025	4,224	4,743	74,619	56,838	11,077	738	2,777	3,189	58,278	48,467	7,164	2,647
*Orleans	81,960	60,249	11,724	3,130	1,001	5,856	68,366	50,820	9,747	2,447	818	4,534	57,601	43,917	7,602	6,082
Plaquemines	23,515	14,287	5,428	1,317	697	1,786	17,334	10,856	3,857	925	500	1,196	13,908	9,513	3,134	1,261
St. Bernard	43,764	24,497	12,309	1,381	947	4,630	31,775	18,992	7,944	982	688	3,169	25,653	18,233	5,497	1,923
*St. Tammany	183,714	129,783	32,489	4,494	4,120	12,828	140,888	103,081	22,436	3,196	3,071	9,104	121,712	95,140	17,801	8,771
*Terrebonne	78,736	50,436	15,221	1,344	7,113	4,622	59,074	40,060	10,265	950	4,718	3,081	44,401	33,063	7,548	3,790
District 1	774,958	517,196	132,669	25,947	23,047	76,099	603,395	419,246	94,127	19,260	16,292	54,470	484,160	371,746	66,868	45,546
	100.000%	66.739%	17.120%	3.348%	2.974%	9.820%	100.000%	69.481%	15.600%	3.192%	2.700%	9.027%	80.239%	76.782%	13.811%	9.407%
District 2																
*Ascension	43,721	19,768	19,819	591	620	2,923	32,021	15,306	13,911	409	439	1,956	28,019	14,250	12,377	1,392
Iberville	30,241	14,833	13,730	202	274	1,202	24,086	12,462	10,232	149	221	1,022	20,462	10,132	9,897	433
*Jefferson	175,069	54,701	86,574	9,768	2,741	21,285	133,315	45,536	63,374	7,670	2,115	14,620	100,494	36,203	51,454	12,837
*Lafayette	32,910	6,504	25,088	173	218	927	25,127	5,724	18,544	130	133	596	21,272	4,108	16,306	858
*Orleans	302,037	66,213	207,245	9,726	2,665	16,188	237,830	59,432	156,321	8,073	2,130	11,874	198,643	48,069	133,923	16,651
St. Charles	52,549	33,550	13,928	837	925	3,309	39,541	26,154	9,890	529	667	2,301	34,985	24,309	8,797	1,879
St. James	20,192	9,973	9,762	60	82	315	15,505	7,883	7,297	31	64	230	14,966	7,254	7,501	211
St. John the Baptist	42,477	13,877	25,196	403	465	2,536	32,503	11,622	18,437	323	350	1,771	28,913	10,219	17,234	1,460
*St. Martin	50,399	31,974	15,908	590	505	1,422	38,250	25,187	11,282	402	383	996	34,127	22,955	10,380	792
West Baton Rouge	27,199	14,307	11,170	287	326	1,109	20,526	11,146	8,149	209	219	803	17,141	9,937	6,865	339
District 2	776,794	265,700	428,420	22,637	8,821	51,216	598,704	220,452	317,437	17,925	6,721	36,169	499,022	187,436	274,734	36,852
	100.000%	34.205%	55.152%	2.914%	1.136%	6.593%	100.000%	36.822%	53.021%	2.994%	1.123%	6.041%	83.350%	37.561%	55.054%	7.385%
District 3																
Acadia	57,576	44,480	10,864	238	573	1,421	42,943	34,071	7,383	173	400	916	37,678	30,555	6,407	716
Assumption	21,039	13,722	6,220	96	258	743	16,616	11,145	4,707	57	197	510	14,439	9,700	4,510	229
*Calcasieu	185,581	113,716	56,274	4,469	2,777	8,345	140,075	89,161	39,833	3,192	2,062	5,827	102,984	70,090	28,161	4,733
Cameron	5,617	5,232	125	30	75	155	4,358	4,100	79	23	47	109	4,789	4,610	88	91
Iberia	69,929	39,206	24,556	2,123	794	3,250	52,791	31,295	17,069	1,562	581	2,284	44,526	28,287	14,352	1,887
Jefferson Davis	32,250	25,066	5,837	183	472	692	24,039	19,121	4,006	111	325	476	20,013	16,350	3,202	461
*Lafayette	208,843	146,859	40,048	6,281	2,992	12,663	158,748	115,884	27,373	4,534	2,254	8,703	132,221	104,537	20,175	7,509
*St. Landry	55,749	36,115	17,148	392	528	1,566	41,715	28,104	11,942	270	377	1,022	36,189	24,702	10,482	1,005
*St. Martin	1,368	1,285	13	7	34	29	1,154	1,091	11	5	30	17	993	979	1	13
St. Mary	49,406	26,949	15,991	835	1,670	3,961	37,521	21,594	11,520	593	1,173	2,641	30,210	18,712	9,891	1,607
*Terrebonne	30,844	19,498	7,926	399	1,524	1,497	23,431	15,571	5,531	289	1,032	1,008	17,319	12,332	4,018	969
Vermilion	57,359	44,477	8,810	1,447	623	2,002	43,012	34,363	5,787	1,037	488	1,337	36,769	30,505	4,994	1,270

Splits

Plan: 221ES-39 (Moore)

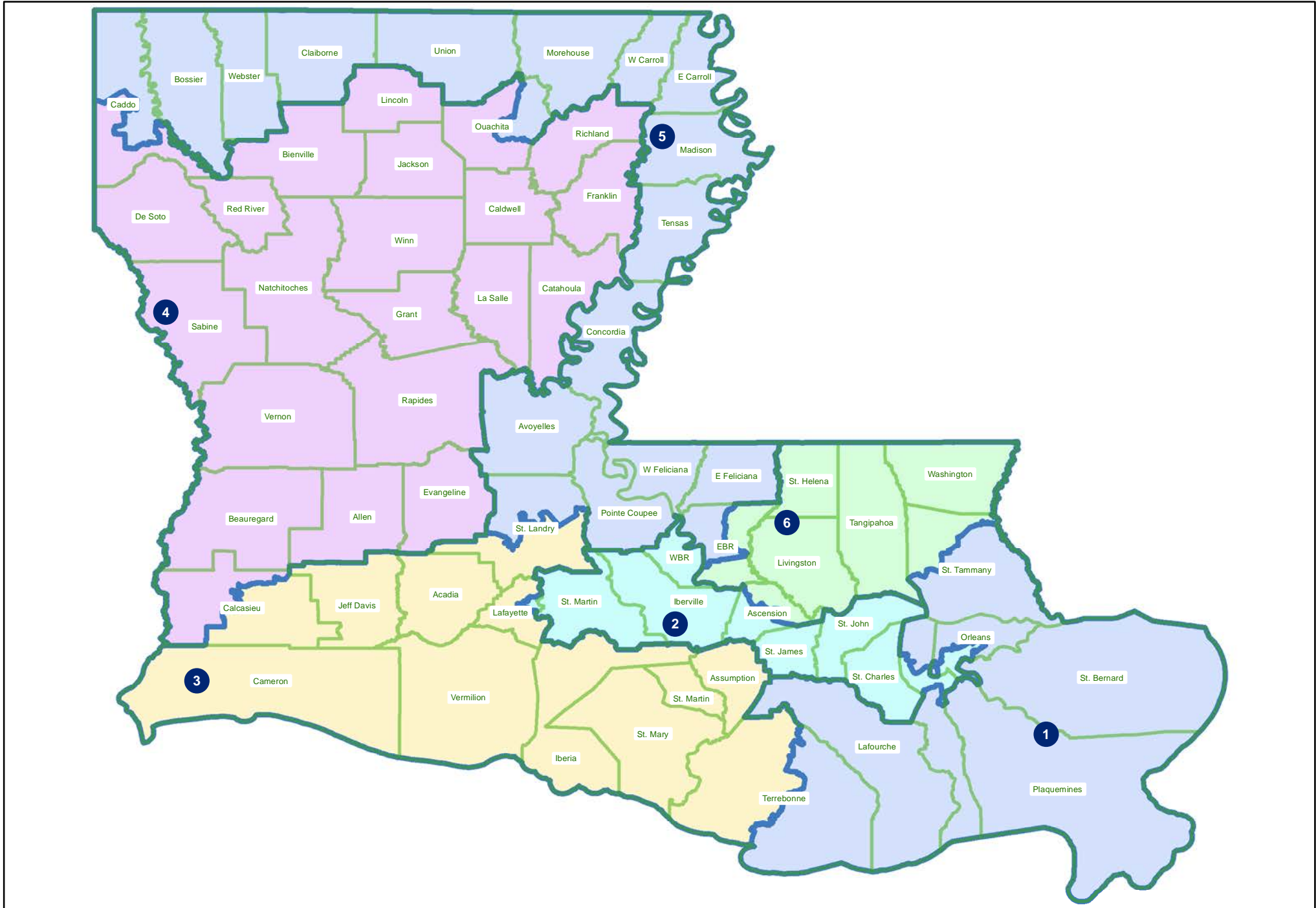
	Total Population	Total White	Total Black	Total Asian	Total American Indian	Total Other	VAP Total	VAP White	VAP Black	VAP Asian	VAP American Indian	VAP Other	Reg Total Dec 2021	Reg White Dec 2021	Reg Black Dec 2021	Reg Other Dec 2021
District 3	775,561	516,605	193,812	16,500	12,320	36,324	586,403	405,500	135,241	11,846	8,966	24,850	478,130	351,359	106,281	20,490
	100.000%	66.610%	24.990%	2.127%	1.589%	4.684%	100.000%	69.150%	23.063%	2.020%	1.529%	4.238%	81.536%	73.486%	22.228%	4.285%
District 4																
Allen	22,750	16,327	4,490	246	947	740	17,510	12,751	3,275	182	646	656	12,201	9,478	2,217	506
Beauregard	36,549	29,529	4,649	402	1,052	917	27,489	22,304	3,495	269	773	648	22,294	18,771	2,369	1,154
Bienville	12,981	6,950	5,600	57	207	167	10,073	5,486	4,284	30	162	111	8,847	4,843	3,917	87
*Bossier	741	462	163	57	14	45	657	433	115	54	13	42	310	228	60	22
*Caddo	106,047	73,872	22,815	3,097	2,370	3,893	83,539	60,136	16,423	2,302	1,863	2,815	70,303	53,575	12,771	3,957
*Calcasieu	31,204	26,056	3,112	233	759	1,044	23,091	19,628	2,065	167	542	689	17,527	15,569	1,352	606
Caldwell	9,645	7,646	1,632	51	150	166	7,478	5,969	1,224	46	116	123	6,031	5,124	818	89
Catahoula	8,906	5,776	2,395	46	119	570	6,951	4,557	1,736	33	87	538	6,467	4,639	1,770	58
De Soto	26,812	15,284	9,973	117	740	698	20,440	11,909	7,425	86	557	463	18,713	11,330	6,810	573
Evangeline	32,350	21,354	9,235	241	280	1,240	24,408	16,460	6,483	187	217	1,061	20,553	14,566	5,643	344
Franklin	19,774	12,492	6,802	70	205	205	15,028	9,901	4,779	44	153	151	13,159	9,015	4,034	110
Grant	22,169	17,709	3,335	133	644	348	17,527	13,964	2,717	97	507	242	12,688	11,174	1,176	338
Jackson	15,031	9,967	4,166	175	255	468	11,783	7,967	3,125	140	174	377	9,449	6,647	2,610	192
La Salle	14,791	11,348	1,422	283	372	1,366	11,563	8,636	1,065	264	271	1,327	8,792	7,978	637	177
Lincoln	48,396	26,034	19,364	892	662	1,444	38,655	21,306	15,119	744	526	960	25,649	15,672	9,016	961
Natchitoches	37,515	19,361	15,725	255	861	1,313	29,349	16,010	11,415	198	683	1,043	23,107	12,850	9,224	1,033
*Ouachita	87,948	67,794	13,573	1,597	1,955	3,029	66,872	52,759	9,335	1,149	1,537	2,092	55,901	47,533	6,317	2,051
Rapides	130,023	77,510	42,592	2,428	3,102	4,391	98,792	61,373	30,205	1,786	2,334	3,094	80,176	52,832	23,775	3,569
Red River	7,620	4,195	3,106	25	171	123	5,714	3,338	2,164	3	116	93	5,631	3,130	2,418	83
Richland	20,043	11,785	7,603	83	258	314	15,383	9,338	5,546	66	203	230	13,662	8,470	4,961	231
Sabine	22,155	15,036	3,861	94	2,723	441	17,064	12,054	2,655	66	1,970	319	14,547	11,023	2,184	1,340
Vernon	48,750	35,087	7,611	1,442	1,600	3,010	36,261	26,765	5,133	1,074	1,160	2,129	24,060	19,182	3,011	1,867
Winn	13,755	8,594	3,727	210	263	961	10,906	6,932	2,695	170	207	902	8,406	5,988	2,292	126
District 4	775,955	520,168	196,951	12,234	19,709	26,893	596,533	409,976	142,478	9,157	14,817	20,105	478,473	349,617	109,382	19,474
	100.000%	67.036%	25.382%	1.577%	2.540%	3.466%	100.000%	68.726%	23.884%	1.535%	2.484%	3.370%	80.209%	73.069%	22.861%	4.070%
District 5																
Avoyelles	39,693	25,625	11,678	434	767	1,189	30,578	20,269	8,311	379	570	1,049	23,426	16,534	6,294	598
*Bossier	128,005	80,590	32,388	3,435	3,259	8,333	95,219	62,498	22,325	2,394	2,464	5,538	69,433	50,633	14,778	4,022
*Caddo	131,801	29,585	96,489	937	1,470	3,320	98,868	24,923	69,936	706	1,095	2,208	80,993	19,538	58,478	2,977
Claiborne	14,170	7,263	6,360	88	185	274	11,507	6,258	4,824	55	140	230	8,598	4,632	3,820	146
Concordia	18,687	10,275	7,725	122	233	332	14,217	8,108	5,613	100	167	229	11,964	7,222	4,540	202
*East Baton Rouge	176,902	27,597	139,894	2,001	1,062	6,348	132,778	23,063	102,962	1,531	821	4,401	110,815	18,728	88,030	4,057
East Carroll	7,459	2,054	5,272	29	43	61	5,901	1,773	4,043	19	27	39	4,709	1,306	3,359	44

Splits

Plan: 221ES-39 (Moore)

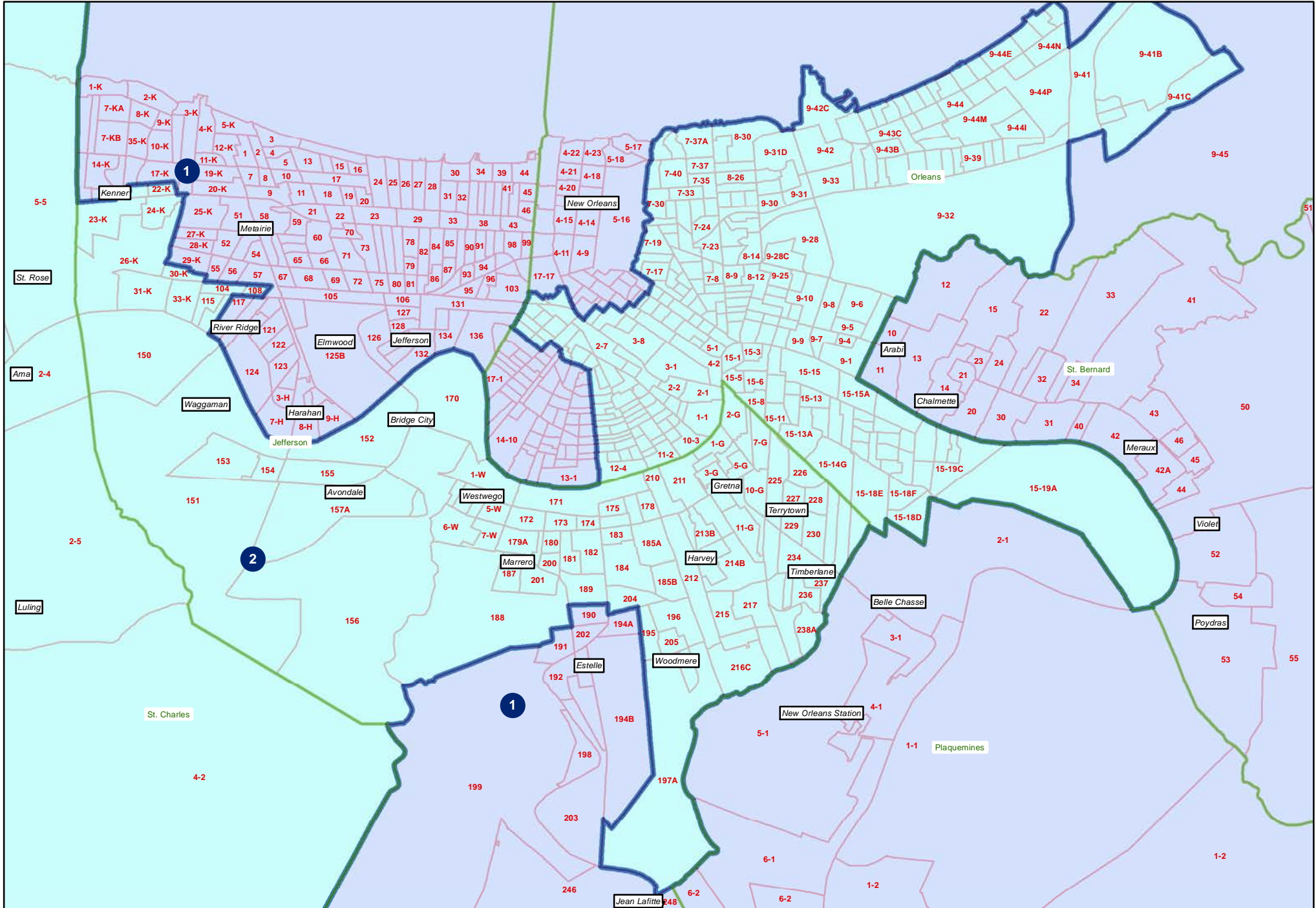
	Total Population	Total White	Total Black	Total Asian	Total American Indian	Total Other	VAP Total	VAP White	VAP Black	VAP Asian	VAP American Indian	VAP Other	Reg Total Dec 2021	Reg White Dec 2021	Reg Black Dec 2021	Reg Other Dec 2021
District 5																
East Feliciana	19,539	11,516	7,341	91	262	329	16,183	9,740	5,918	61	198	266	13,600	7,959	5,186	455
Madison	10,017	3,475	6,363	20	59	100	7,435	2,906	4,391	9	48	81	7,278	2,494	4,674	110
Morehouse	25,629	12,281	12,484	160	370	334	20,062	10,095	9,300	117	279	271	16,922	8,505	8,131	286
*Ouachita	72,420	20,751	47,644	1,191	706	2,128	53,328	17,215	32,955	969	522	1,667	43,851	12,982	29,341	1,528
Pointe Coupee	20,758	12,395	7,504	107	159	593	16,250	10,108	5,502	91	119	430	14,675	9,320	5,121	234
*St. Landry	26,791	7,496	18,688	107	108	392	20,096	6,105	13,555	83	74	279	18,293	5,391	12,523	379
Tensas	4,147	1,744	2,312	23	26	42	3,235	1,446	1,728	12	23	26	3,455	1,503	1,917	35
Union	21,107	14,460	5,224	62	338	1,023	16,632	11,807	3,861	39	254	671	15,221	11,066	3,692	463
Webster	36,967	22,735	12,679	208	687	658	28,753	18,144	9,464	154	558	433	22,737	14,938	7,339	460
West Carroll	9,751	7,894	1,425	27	180	225	7,532	6,223	1,010	20	136	143	7,038	5,913	1,040	85
West Feliciana	15,310	10,883	3,740	89	225	373	12,783	9,283	2,951	56	174	319	7,407	5,092	2,180	135
District 5	779,153	308,619	425,210	9,131	10,139	26,054	591,357	249,964	308,649	6,795	7,669	18,280	480,415	203,756	260,443	16,216
	100.000%	39.610%	54.573%	1.172%	1.301%	3.344%	100.000%	42.270%	52.193%	1.149%	1.297%	3.091%	81.239%	42.412%	54.212%	3.375%
District 6																
*Ascension	82,779	61,373	12,397	1,709	1,384	5,916	59,936	45,830	8,228	1,105	951	3,822	51,898	42,550	6,437	2,911
*East Baton Rouge	279,879	168,472	73,504	14,424	3,665	19,814	222,834	140,818	53,828	11,068	2,926	14,194	168,449	119,504	36,645	12,300
Livingston	142,282	116,855	12,658	1,697	3,111	7,961	105,141	88,432	8,136	1,099	2,311	5,163	84,568	76,062	5,425	3,081
St. Helena	10,920	4,527	6,031	39	134	189	8,463	3,805	4,371	28	109	150	8,321	3,628	4,565	128
*St. Tammany	80,856	66,858	6,154	1,280	1,540	5,024	61,340	51,540	4,325	879	1,090	3,506	57,067	50,584	3,341	3,142
Tangipahoa	133,157	81,336	41,879	1,474	2,454	6,014	101,491	65,205	29,217	1,100	1,827	4,142	76,256	52,912	20,525	2,819
Washington	45,463	29,943	13,434	216	736	1,134	34,951	23,743	9,732	154	561	761	27,587	18,835	8,102	650
District 6	775,336	529,364	166,057	20,839	13,024	46,052	594,156	419,373	117,837	15,433	9,775	31,738	474,146	364,075	85,040	25,031
	100.000%	68.275%	21.417%	2.688%	1.680%	5.940%	100.000%	70.583%	19.833%	2.597%	1.645%	5.342%	79.802%	76.785%	17.935%	5.279%

221ES-39 (Moore)
Statewide



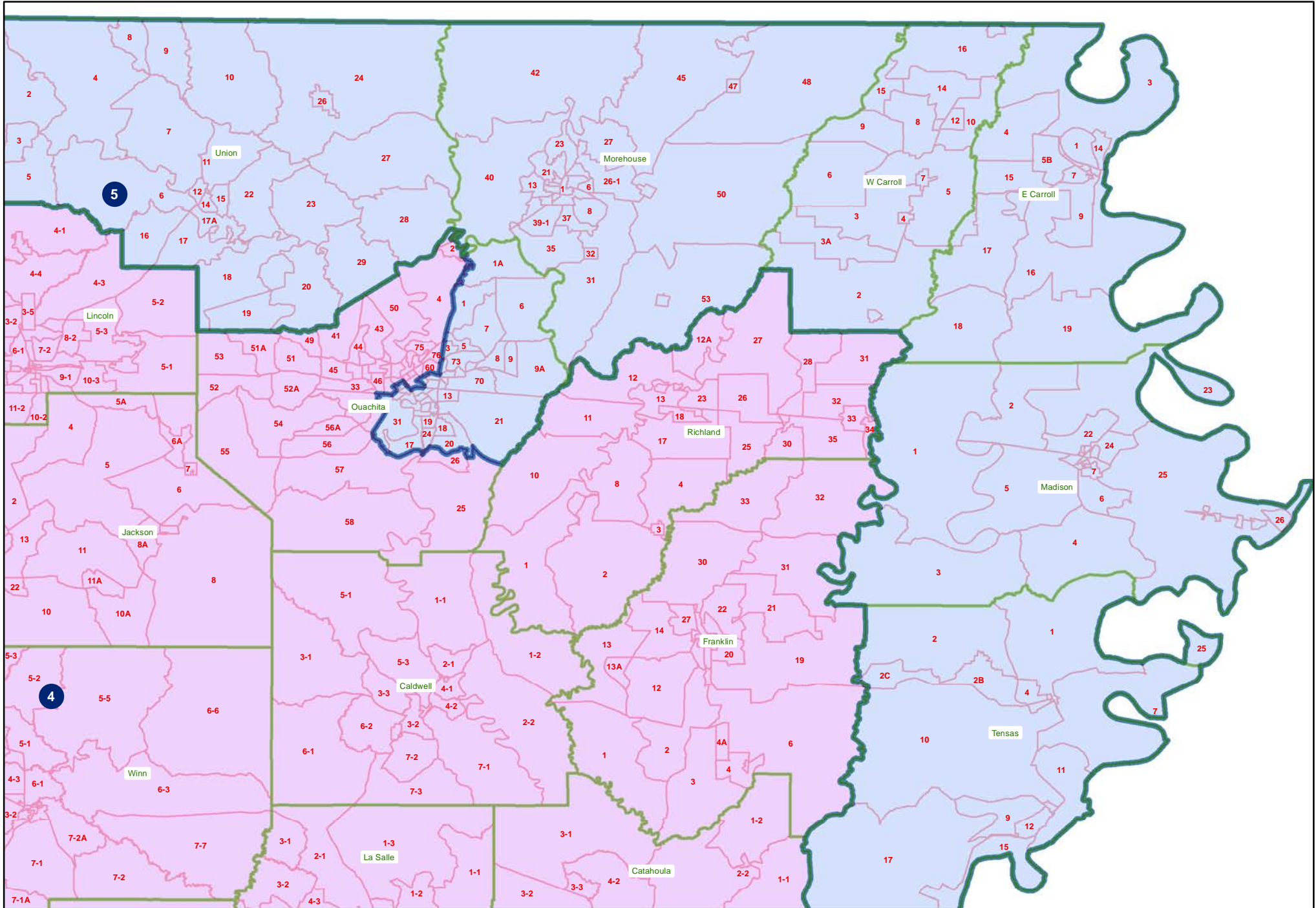
221ES-39 (Moore)

Orleand and Jefferson

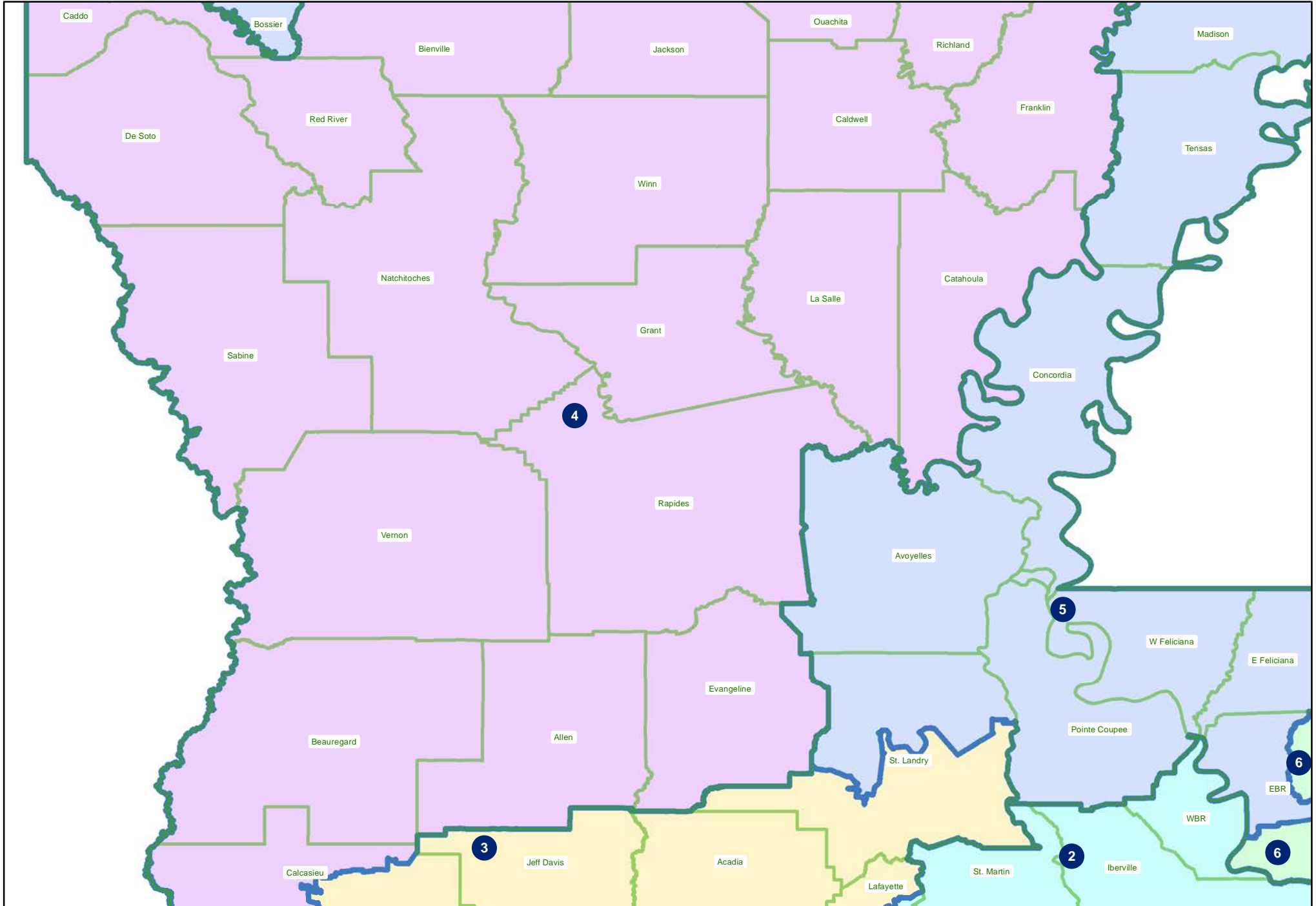


221ES-39 (Moore)

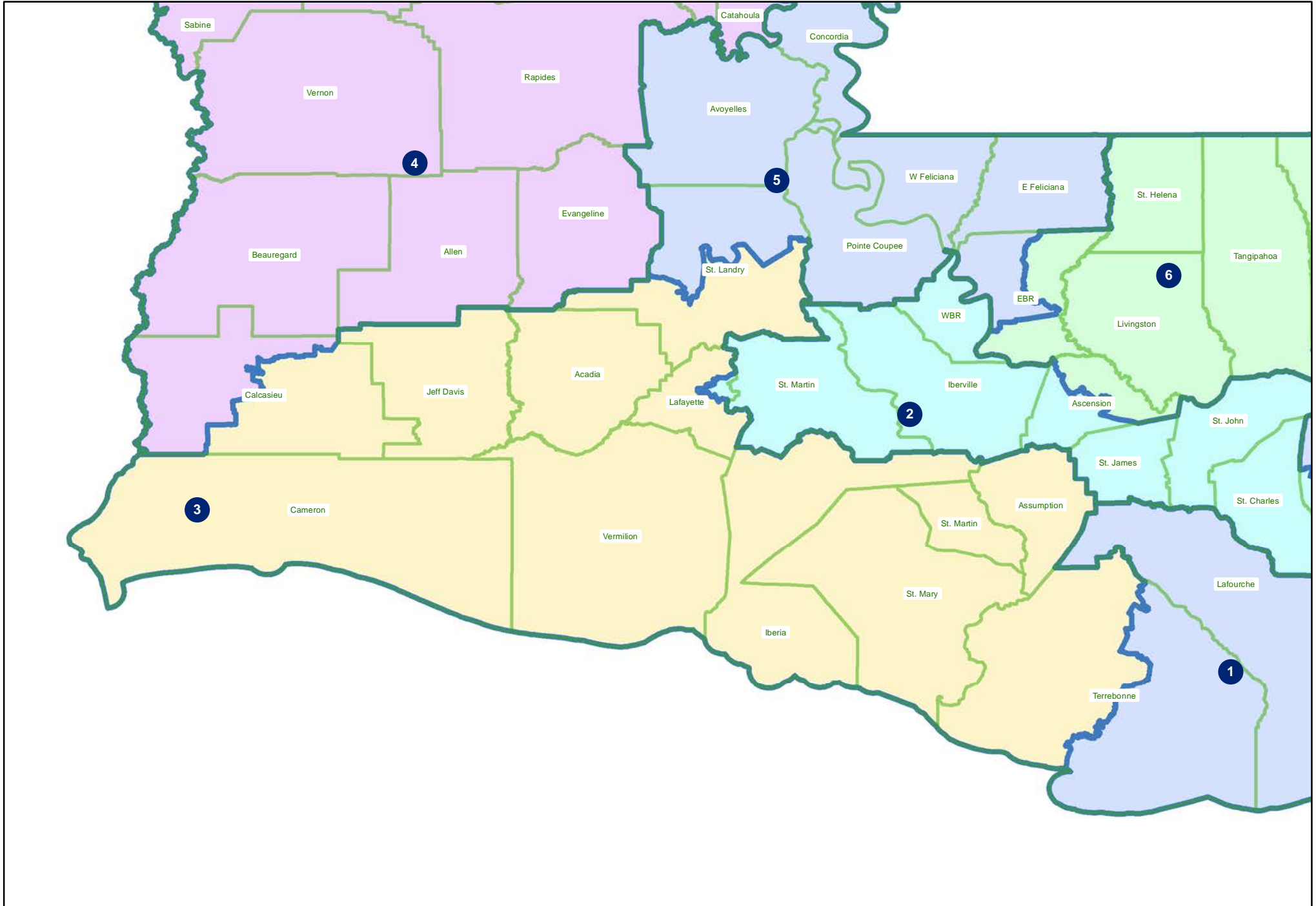
Northeast



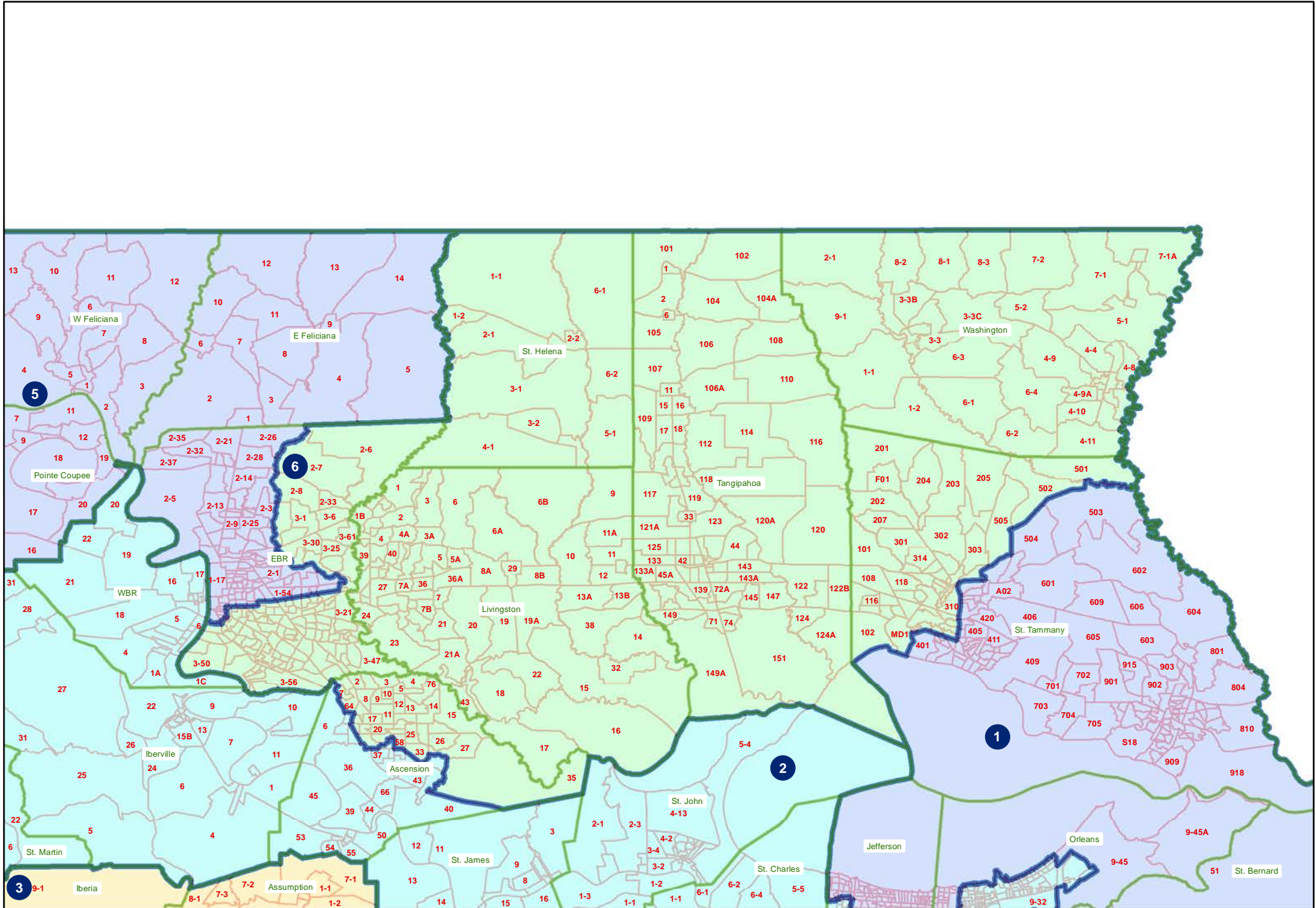
221ES-39 (Moore)
Central



221ES-39 (Moore)
Southwest

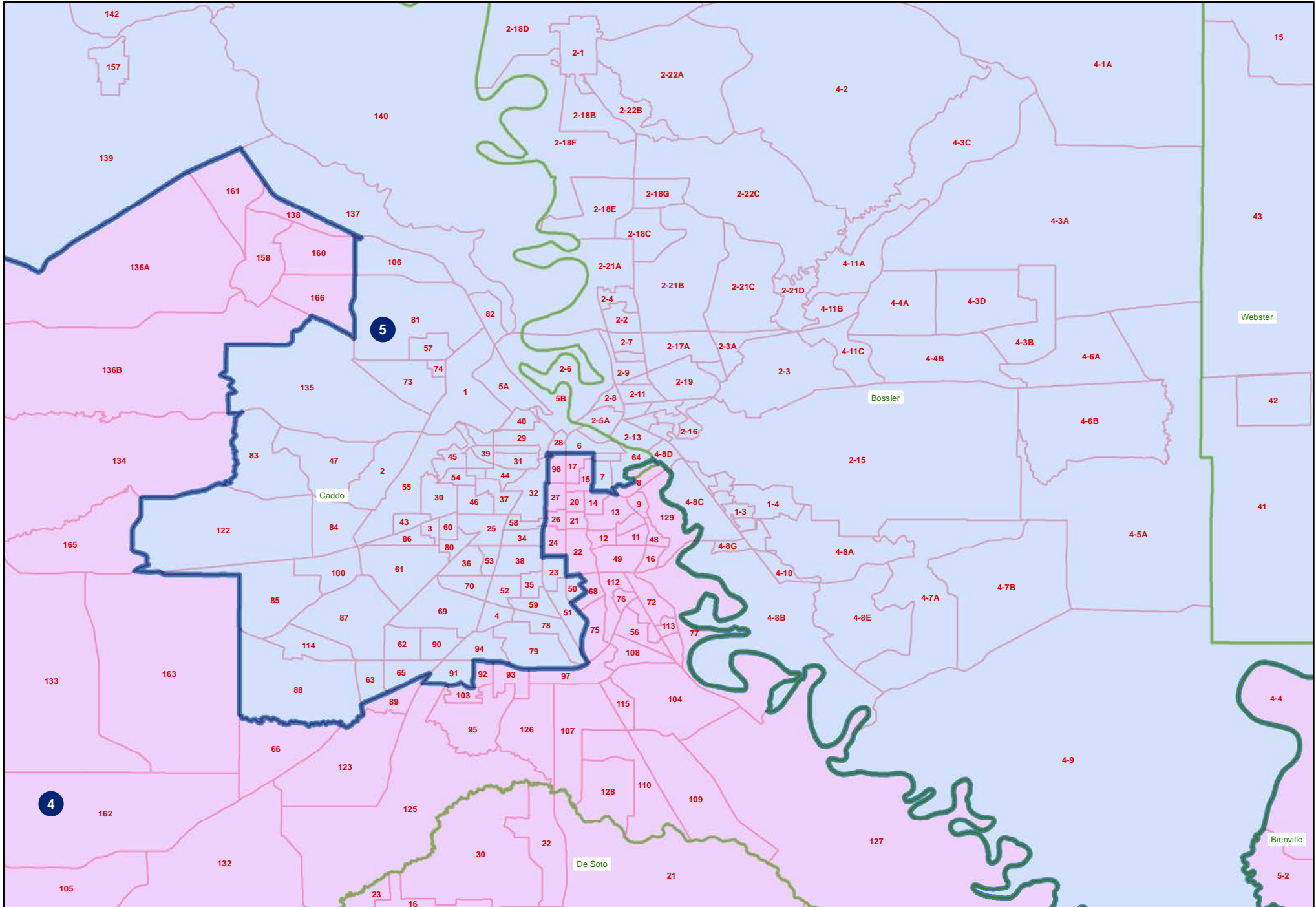


221ES-39 (Moore)
Florida Parishes



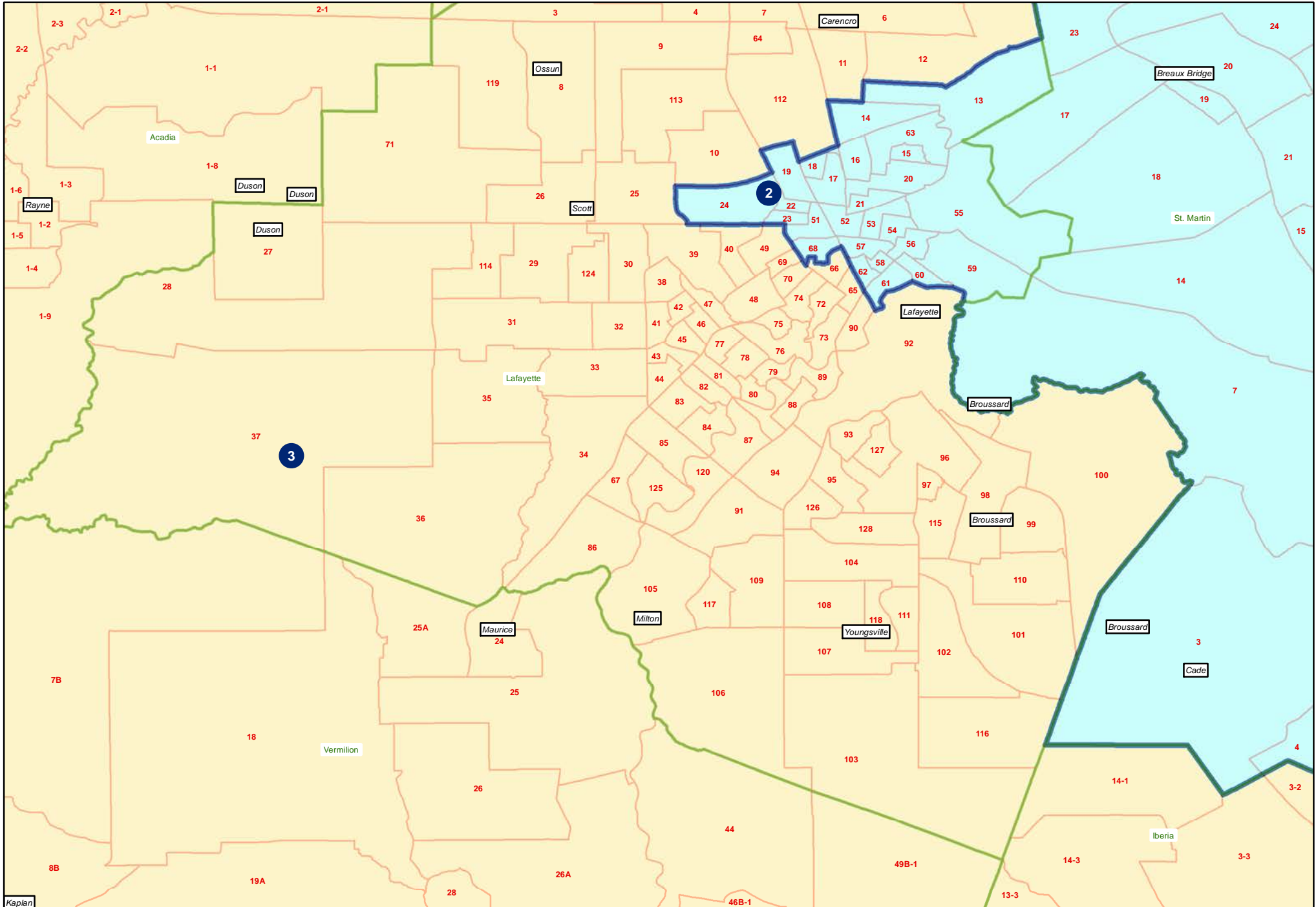
221ES-39 (Moore)

Shreveport



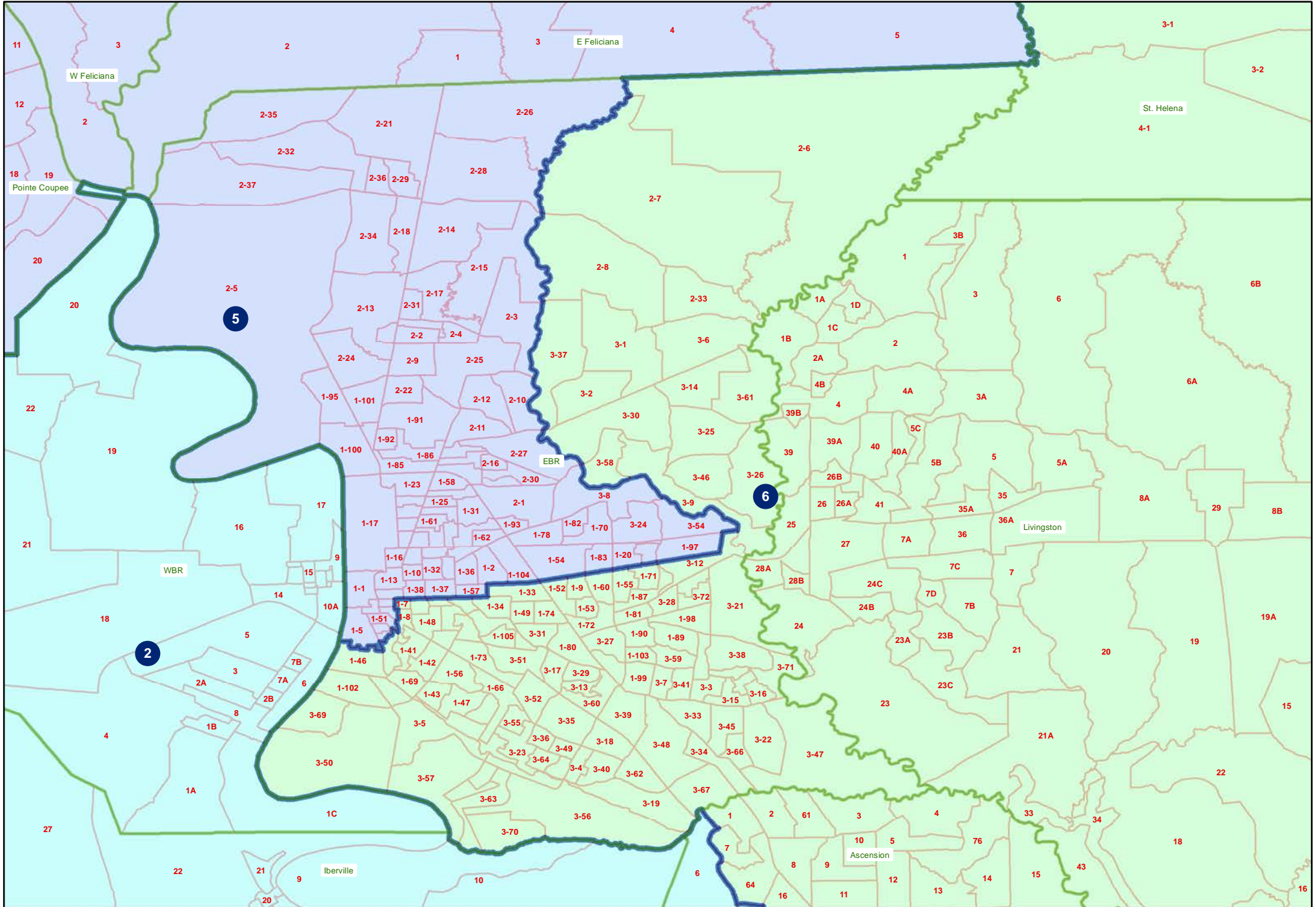
221ES-39 (Moore)

Lafayette

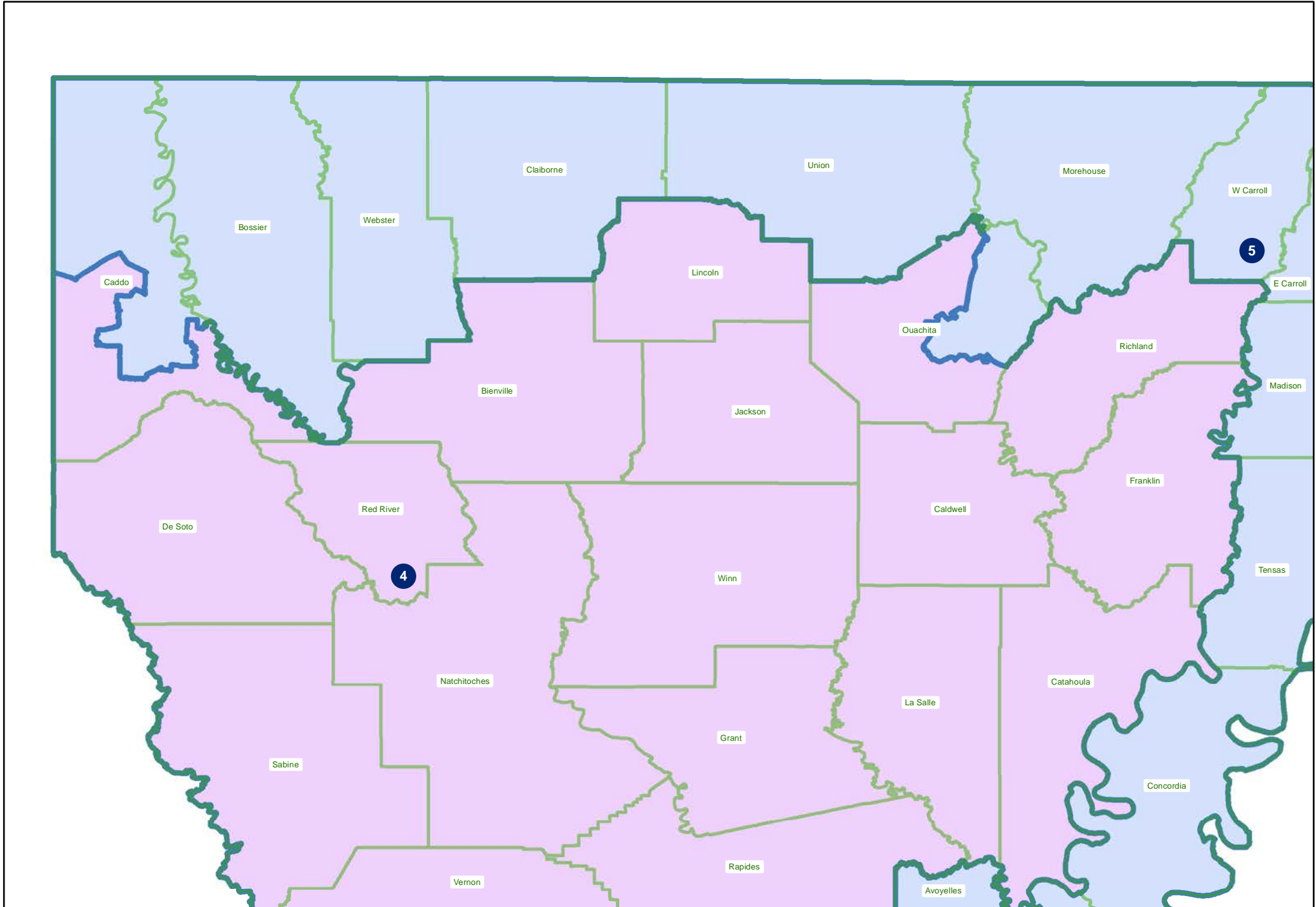


221ES-39 (Moore)

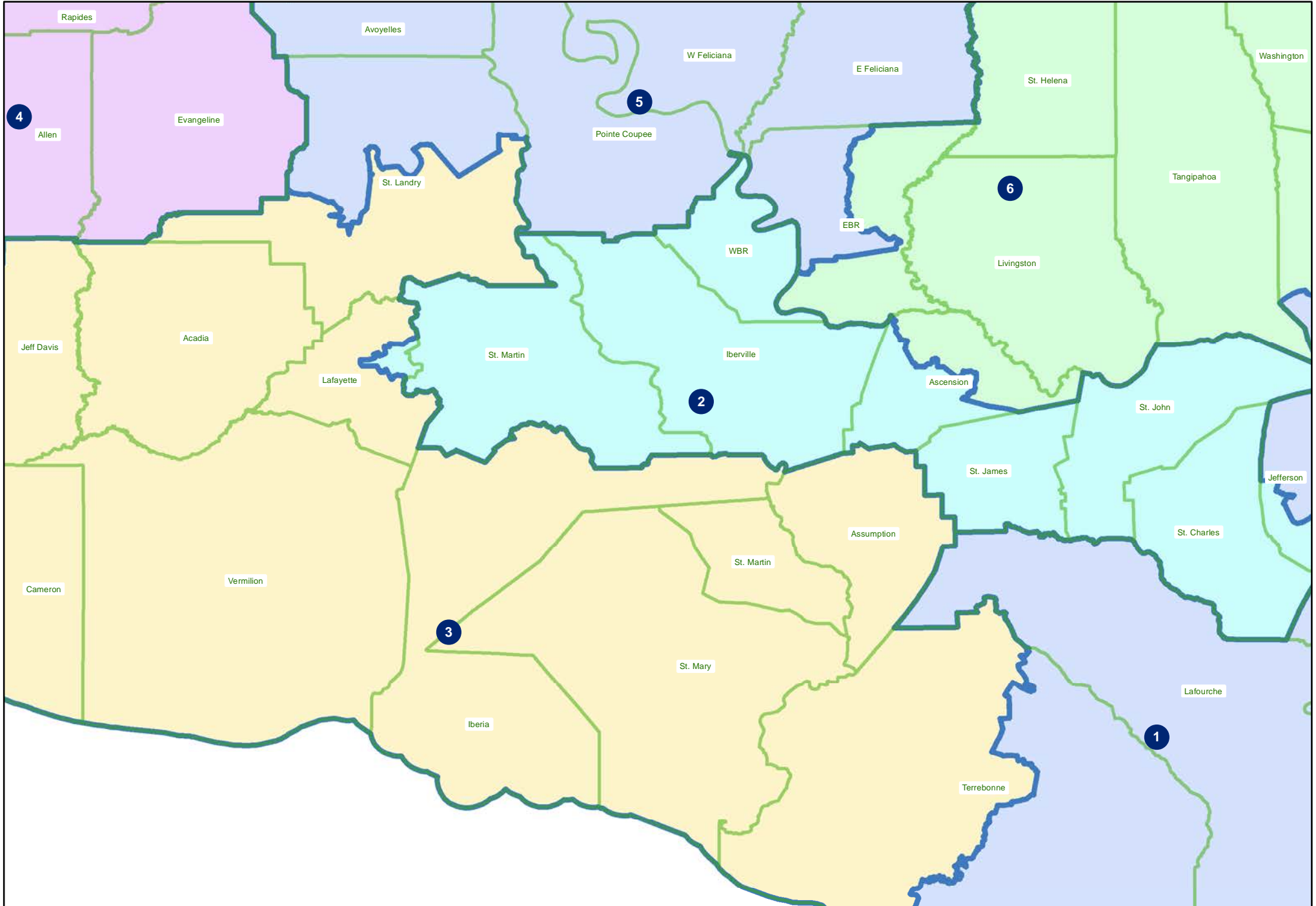
Baton Rouge



221ES-39 (Moore)
Northwest



221ES-39 (Moore)
Acadiana



221ES-39 (Moore)

Monroe

