

2022 First Extraordinary Session

HOUSE BILL NO. 12

BY REPRESENTATIVE BRYANT

REAPPORTIONMENT/CONGRESS: Provides relative to the districts for members of the United States Congress (Item #3)

1 AN ACT

2 To enact R.S. 18:1276 and to repeal R.S. 18:1276.1, relative to congressional districts; to  
3 provide for the redistricting of Louisiana's congressional districts; to provide with respect  
4 to positions and offices, other than congressional, which are based upon congressional  
5 districts; to provide for the effectiveness; and to provide for related matters.

6 Be it enacted by the Legislature of Louisiana:

7 Section 1. R.S. 18:1276 is hereby enacted to read as follows:

8 §1276. Congressional districts

9 Louisiana shall be divided into six congressional districts, and the qualified  
10 electors of each district shall elect one representative to the United States House of  
11 Representatives. The districts shall be composed as follows:

- 12 (1) District 1 is composed of Precincts 1, 2, 3, 4, 5, 7, 8, 9, 10, 11, 12, 13, 14,
- 13 15, 16, 17, 18, 19, 20, 21, 22, 23, 24, 25, 26, 27, 28, 29, 30, 31, 32, 33, 34, 35, 36, 37,
- 14 38, 39, 40, 41, 42, 43, 44, 45, 46, 51, 52, 53, 54, 55, 56, 57, 58, 59, 60, 61, 62, 63, 64,
- 15 65, 66, 67, 68, 69, 70, 71, 72, 73, 74, 75, 76, 77, 78, 79, 80, 81, 82, 83, 84, 85, 86, 87,
- 16 88, 89, 90, 91, 92, 93, 94, 95, 96, 97, 98, 99, 100, 101, 102, 103, 105, 106, 117, 118,
- 17 119, 120, 121, 122, 123, 124, 125A, 125B, 126, 127, 128, 129, 130, 131, 132, 133,
- 18 134, 136, 138, 190, 191, 192, 193A, 193B, 194A, 194B, 198, 199, 202, 203, 246,
- 19 247, 248, 1-GI, 1-H, 2-H, 3-H, 4-H, 5-H, 6-H, 7-H, 8-H, 9-H, 1-K, 2-K, 3-K, 4-K,
- 20 5-K, 6-KA, 6-KB, 7-KA, 7-KB, 8-K, 9-K, 10-K, 11-K, 12-K, 13-KA, 13-KB, 14-K,

1        15-K, 16-K, 17-K, 18-K, 19-K, 20-K, 25-K, 27-K, 28-K, 34-K, 35-K, and 1-L of  
2        Jefferson Parish; Lafourche Parish; Precincts 4-8, 4-9, 4-11, 4-14, 4-15, 4-17, 4-17A,  
3        4-18, 4-20, 4-21, 4-22, 4-23, 5-15, 5-16, 5-17, 5-18, 9-45, 9-45A, 13-1, 13-2, 13-3,  
4        13-4, 13-5, 13-6, 13-7, 13-8, 13-9, 13-10, 13-11, 13-12, 13-13, 13-14, 13-15, 13-16,  
5        14-1, 14-2, 14-3, 14-4, 14-5, 14-6, 14-7, 14-8, 14-9, 14-10, 14-11, 14-12, 14-13A,  
6        14-14, 14-15, 14-16, 14-17, 14-18A, 14-19, 14-20, 14-21, 16-1, 16-1A, 16-2, 16-3,  
7        16-4, 16-5, 16-6, 16-7, 16-8, 17-1, 17-2, 17-17, 17-18, 17-18A, 17-19, and 17-20 of  
8        Orleans Parish; Plaquemines Parish; St. Bernard Parish; Precincts 22, 26, 27, 28, 29,  
9        30, 31, 32, 33, 34, 35, 36, 37, 38, 39, 40, 41, 42, 43, 44, and 45 of St. Mary Parish;  
10       Precincts 403, 406, 408, 409, 410, 411, 412, 415, 420, 422, 426, 427, 430, 601, 602,  
11       603, 604, 605, 606, 609, 701, 702, 703, 704, 705, 706, 801, 802, 803, 804, 805, 806,  
12       807, 808, 809, 810, 811, 812, 813, 814, 815, 816, 817, 818, 901, 902, 903, 904, 905,  
13       906, 907, 909, 910, 911, 912, 913, 914, 915, 916, 917, 918, 921, 922, M04, M05,  
14       M09, M10, P01, S01, S02, S03, S04, S05, S06, S07, S08, S09, S10, S11, S13, S15,  
15       S16, S17, S18, S19, S20, S21, S22, S23, S24, and S25 of St. Tammany Parish and  
16       Terrebonne Parish.

17       (2) District 2 is composed of Precincts 6, 28, 30, 36, 37, 39, 40, 42, 44, 45,  
18       47, 48, 50, 51, 52, 53, 54, 55, 57, 62, 63, 65, and 66 of Ascension Parish;  
19       Assumption Parish; Precincts 1-1, 1-3, 2-1, 3-1, 4-1, 4-2, 4-3, 6-5, 7-1, 7-5, 8-2, 8-3,  
20       9-1, 9-2, 9-4, 9-5, 10-1, 11-2, 12-1, and 12-3 of Iberia Parish; Precincts 104, 108,  
21       115, 116, 150, 151, 152, 153, 154, 155, 156, 157A, 157B, 170, 171, 172, 173, 174,  
22       175, 176, 177, 178, 179A, 179B, 180, 181, 182, 183, 184, 185A, 185B, 187, 188,  
23       189, 195, 196, 197A, 197B, 200, 201, 204, 205, 210, 211, 212, 213A, 213B, 213C,  
24       214A, 214B, 215, 216A, 216B, 216C, 217, 225, 226, 227, 228, 229, 230, 231, 232A,  
25       232B, 234, 235, 236, 237, 238A, 238B, 1-G, 2-G, 3-G, 4-G, 5-G, 6-G, 7-G, 8-G,  
26       9-G, 10-G, 11-G, 12-G, 13-G, 21-K, 22-K, 23-K, 24-K, 26-K, 29-K, 30-K, 31-K,  
27       33-K, 1-W, 2-W, 3-W, 4-W, 5-W, 6-W, and 7-W of Jefferson Parish; Precincts 14,  
28       15, 16, 17, 18, 19, 20, 21, 22, 23, 24, 51, 52, 53, 54, 55, 56, 57, 58, 59, 60, 61, 62,  
29       and 63 of Lafayette Parish; Precincts 1-1, 1-2, 1-5, 1-6, 2-1, 2-2, 2-4, 2-6, 2-7, 3-1,

1 3-8, 3-9, 3-12, 3-14, 3-15, 3-18, 3-19, 3-20, 4-2, 4-3, 4-5, 4-6, 4-7, 5-1, 5-2, 5-3, 5-5,  
2 5-7, 5-8, 5-9, 5-10, 5-11, 5-12, 5-13, 6-1, 6-2, 6-4, 6-6, 6-7, 6-8, 6-9, 7-1, 7-2, 7-4,  
3 7-5, 7-6, 7-7, 7-8, 7-9A, 7-10, 7-11, 7-12, 7-13, 7-14, 7-15, 7-16, 7-17, 7-18, 7-19,  
4 7-20, 7-21, 7-23, 7-24, 7-25, 7-25A, 7-26, 7-27, 7-27B, 7-28, 7-28A, 7-29, 7-30,  
5 7-32, 7-33, 7-35, 7-37, 7-37A, 7-40, 7-41, 7-42, 8-1, 8-2, 8-4, 8-6, 8-7, 8-8, 8-9,  
6 8-12, 8-13, 8-14, 8-15, 8-19, 8-20, 8-21, 8-22, 8-23, 8-24, 8-25, 8-26, 8-27, 8-28,  
7 8-30, 9-1, 9-3, 9-4, 9-5, 9-6, 9-7, 9-8, 9-9, 9-10, 9-11, 9-12, 9-13, 9-14, 9-15, 9-16,  
8 9-17, 9-19, 9-21, 9-23, 9-25, 9-26, 9-28, 9-28C, 9-29, 9-30, 9-30A, 9-31, 9-31A,  
9 9-31B, 9-31D, 9-32, 9-33, 9-34A, 9-35, 9-35A, 9-36, 9-36B, 9-37, 9-38, 9-38A,  
10 9-39, 9-39B, 9-40, 9-40A, 9-40C, 9-41, 9-41A, 9-41B, 9-41C, 9-41D, 9-42, 9-42C,  
11 9-43A, 9-43B, 9-43C, 9-43E, 9-43F, 9-43G, 9-43H, 9-43I, 9-43J, 9-43K, 9-43L,  
12 9-43M, 9-43N, 9-44, 9-44A, 9-44B, 9-44D, 9-44E, 9-44F, 9-44G, 9-44I, 9-44J,  
13 9-44L, 9-44M, 9-44N, 9-44O, 9-44P, 9-44Q, 10-3, 10-6, 10-7, 10-8, 10-9, 10-11,  
14 10-12, 10-13, 10-14, 11-2, 11-3, 11-4, 11-5, 11-8, 11-9, 11-10, 11-11, 11-12, 11-13,  
15 11-14, 11-17, 12-1, 12-2, 12-3, 12-4, 12-5, 12-6, 12-7, 12-8, 12-9, 12-10, 12-11,  
16 12-12, 12-13, 12-14, 12-16, 12-17, 12-19, 14-23, 14-24A, 14-25, 14-26, 15-1, 15-2,  
17 15-3, 15-5, 15-6, 15-8, 15-9, 15-10, 15-11, 15-12, 15-12A, 15-13, 15-13A, 15-13B,  
18 15-14, 15-14A, 15-14B, 15-14C, 15-14D, 15-14E, 15-14F, 15-14G, 15-15, 15-15A,  
19 15-15B, 15-16, 15-17, 15-17A, 15-17B, 15-18, 15-18A, 15-18B, 15-18C, 15-18D,  
20 15-18E, 15-18F, 15-19, 15-19A, 15-19B, 15-19C, 16-9, 17-3, 17-4, 17-5, 17-6, 17-7,  
21 17-8, 17-9, 17-10, 17-11, 17-12, 17-13, 17-13A, 17-14, 17-15, and 17-16 of Orleans  
22 Parish; St. Charles Parish; St. James Parish; St. John the Baptist Parish; and St.  
23 Martin Parish.

24 (3) District 3 is composed of Acadia Parish; Allen Parish; Beauregard Parish;  
25 Calcasieu Parish; Cameron Parish; Evangeline Parish; Precincts 2-3, 3-2, 3-3, 4-4,  
26 5-4, 6-1, 6-3, 7-2, 7-4, 10-2, 10-3, 10-4, 10-7, 13-1, 13-3, 14-1, and 14-3 of Iberia  
27 Parish; Jefferson Davis Parish; Precincts 3, 8, 9, 10, 25, 26, 27, 28, 29, 30, 31, 32,  
28 33, 34, 35, 36, 37, 38, 39, 40, 41, 42, 43, 44, 45, 46, 47, 48, 49, 64, 65, 66, 67, 68, 69,  
29 70, 71, 72, 73, 74, 75, 76, 77, 78, 79, 80, 81, 82, 83, 84, 85, 86, 87, 88, 89, 90, 91, 92,

1        93, 94, 95, 96, 97, 98, 99, 100, 101, 102, 103, 104, 105, 106, 107, 108, 109, 110, 111,  
 2        112, 113, 114, 115, 116, 117, 118, 119, 120, 121, 124, 125, 126, 127, and 128 of  
 3        Lafayette Parish; Sabine Parish; Precincts 1, 2, 3, 4, 5, 6, 7, 8, 9, 10, 11, 12, 13, 14,  
 4        15, 16, 17, 18, 19, 20, 21, 23, 24, and 25 of St. Mary Parish; Vermilion Parish; and  
 5        Vernon Parish.

6                (4) District 4 is composed of Bienville Parish; Bossier Parish; Precincts 8,  
 7        9, 10, 11, 12, 13, 14, 15, 16, 17, 20, 21, 22, 24, 26, 27, 48, 49, 56, 68, 72, 75, 76, 77,  
 8        82, 92, 93, 95, 97, 98, 101, 102, 103, 104, 106, 107, 108, 109, 110, 112, 113, 115,  
 9        126, 127, 128, 129, 133, 134, 135, 136A, 136B, 137, 138, 139, 140, 142, 143, 144,  
 10        145, 146, 149, 151, 154, 155, 156, 157, 158, 160, 161, 163, 165, and 166 of Caddo  
 11        Parish; Caldwell Parish; Catahoula Parish; Claiborne Parish; Concordia Parish; East  
 12        Carroll Parish; Franklin Parish; Grant Parish; Jackson Parish; La Salle Parish;  
 13        Lincoln Parish; Madison Parish; Morehouse Parish; Precincts 1-1A, 1-2, 1-7, 1-12,  
 14        2-1, 2-2, 2-3, 2-4, 2-5, 2-6, 2-7A, 2-8, and 2-9 of Natchitoches Parish; Ouachita  
 15        Parish; Precincts N12, N15, N16, N17, N18-A, N18-B, N19, N22, N23, N24, N25,  
 16        N26, and N27 of Rapides Parish; Red River Parish; Richland Parish; Tensas Parish;  
 17        Union Parish; Webster Parish; West Carroll Parish; and Winn Parish.

18                (5) District 5 is composed of Avoyelles Parish; Precincts 1, 2, 3, 4, 5A, 5B,  
 19        6, 7, 23, 25, 28, 29, 30, 31, 32, 34, 35, 36, 37, 38, 39, 40, 41, 43, 44, 45, 46, 47, 50,  
 20        51, 52, 53, 54, 55, 57, 58, 59, 60, 61, 62, 63, 64, 65, 66, 67, 69, 70, 71, 73, 74, 78, 79,  
 21        80, 81, 83, 84, 85, 86, 87, 88, 89, 90, 91, 94, 99, 100, 105, 111, 114, 122, 123, 125,  
 22        132, and 162 of Caddo Parish; De Soto Parish; Precincts 1-1, 1-2, 1-3, 1-4, 1-5, 1-6,  
 23        1-10, 1-11, 1-13, 1-14, 1-15, 1-16, 1-17, 1-18, 1-19, 1-20, 1-21, 1-22, 1-23, 1-24,  
 24        1-25, 1-26, 1-27, 1-28, 1-29, 1-30, 1-31, 1-32, 1-36, 1-37, 1-38, 1-45, 1-50, 1-51,  
 25        1-54, 1-58, 1-61, 1-62, 1-63, 1-67, 1-68, 1-70, 1-77, 1-78, 1-82, 1-83, 1-84, 1-85,  
 26        1-86, 1-88, 1-91, 1-92, 1-93, 1-94, 1-95, 1-97, 1-100, 1-101, 1-104, 2-1, 2-2, 2-3, 2-4,  
 27        2-5, 2-6, 2-7, 2-8, 2-9, 2-10, 2-11, 2-12, 2-13, 2-14, 2-15, 2-16, 2-17, 2-18, 2-19,  
 28        2-20, 2-21, 2-22, 2-23, 2-24, 2-25, 2-26, 2-27, 2-28, 2-29, 2-30, 2-31, 2-32, 2-33,  
 29        2-34, 2-35, 2-36, 2-37, 3-1, 3-2, 3-6, 3-8, 3-14, 3-24, 3-30, 3-37, 3-54, and 3-58 of

1 East Baton Rouge Parish; East Feliciana Parish; Iberville Parish; Precincts 1, 2, 4,  
2 5, 6, 7, 11, 12, 13, 122, and 123 of Lafayette Parish; Precincts 1-1, 1-3, 1-3A, 1-4,  
3 1-4A, 1-5, 1-5A, 1-6, 1-8, 1-9, 1-9A, 1-10, 1-10A, 1-10B, 1-11, 1-13, 1-14, 2-7, 3-1,  
4 3-2, 3-3, 3-4, 3-5, 3-6, 3-7, 3-8, 3-9, 3-10, 4-1, 4-2, 4-3, 4-4, 4-5, 4-6, 4-7, 4-8, and  
5 4-9 of Natchitoches Parish; Pointe Coupee Parish; Precincts C1, C2, C3, C4, C5, C6,  
6 C7, C8, C9, C10, C11-A, C11-B, C13, C14, C15, C17, C18, C19, C20, C21, C22,  
7 C23, C24, C25, C26, C27, C28, C30, C31, C32, C33, C34, C35, C36, C37-A, C37-B,  
8 C38-A, C38-B, C39, C40, C41, C42, N1, N2, N3, N4, N5, N6, N7, N8, N9, N10,  
9 N11, N13-A, N13-B, N14-A, N14-B, N20, N21, N28, N29, S1, S2, S4, S5, S6A,  
10 S6B, S7, S8, S9, S10, S11, S13, S14, S15, S16, S17, S18, S19, S20, S21, S22, S23,  
11 S24, S25, S26, S27, S28, and S29 of Rapides Parish; St. Helena Parish; St. Landry  
12 Parish; Precincts 1, 2, 6, 11, 15, 17, 18, 26, 101, 102, 104, 104A, 105, 106, 107, 108,  
13 109, 111A, and 115B of Tangipahoa Parish; West Baton Rouge Parish; and West  
14 Feliciana Parish.

15 (6) District 6 is composed of Precincts 1, 2, 3, 4, 5, 7, 8, 9, 10, 11, 12, 13, 14,  
16 15, 16, 17, 18, 20, 21, 22, 23, 24, 25, 26, 27, 31, 32, 33, 34, 35, 41, 43, 58, 61, 64, 71,  
17 72, 73, 76, 77, and 78 of Ascension Parish; Precincts 1-7, 1-8, 1-9, 1-12, 1-33, 1-34,  
18 1-35, 1-39, 1-40, 1-41, 1-42, 1-43, 1-44, 1-46, 1-47, 1-48, 1-49, 1-52, 1-53, 1-55,  
19 1-56, 1-57, 1-59, 1-60, 1-64, 1-65, 1-66, 1-69, 1-71, 1-72, 1-73, 1-74, 1-75, 1-76,  
20 1-79, 1-80, 1-81, 1-87, 1-89, 1-90, 1-98, 1-99, 1-102, 1-103, 1-105, 1-107, 3-3, 3-4,  
21 3-5, 3-7, 3-9, 3-10, 3-11, 3-12, 3-13, 3-15, 3-16, 3-17, 3-18, 3-19, 3-20, 3-21, 3-22,  
22 3-23, 3-25, 3-26, 3-27, 3-28, 3-29, 3-31, 3-32, 3-33, 3-34, 3-35, 3-36, 3-38, 3-39,  
23 3-40, 3-41, 3-43, 3-44, 3-45, 3-46, 3-47, 3-48, 3-49, 3-50, 3-51, 3-52, 3-53, 3-55,  
24 3-56, 3-57, 3-59, 3-60, 3-61, 3-62, 3-63, 3-64, 3-65, 3-66, 3-67, 3-68, 3-69, 3-70,  
25 3-71, and 3-72 of East Baton Rouge Parish; Livingston Parish; Precincts 101, 102,  
26 103, 104, 105, 106, 107, 108, 110, 111, 112, 113, 114, 115, 116, 118, 201, 202, 203,  
27 204, 205, 206, 207, 301, 302, 303, 304, 305, 306, 307, 308, 309, 310, 312, 313, 314,  
28 401, 402, 404, 405, 407, 413, 414, 416, 417, 418, 419, 421, 429, 501, 502, 503, 504,  
29 505, A01, A02, A03, A04, C01, C02, C03, C04, C05, C06, C07, C08, C09, C10,

1        C11, F01, M01, M02, M03, M06, M07, M08, M11, M12, and MD1 of St. Tammany  
2        Parish; Precincts 16, 27, 28, 33, 40, 40A, 41, 42, 42A, 43, 44, 45, 45A, 46, 47, 48,  
3        49, 70, 70A, 71, 72, 72A, 73, 74, 106A, 110, 112, 114, 116, 117, 118, 119, 120,  
4        120A, 120B, 121, 121A, 122, 122A, 122B, 123, 124, 124A, 125, 127, 127A, 129,  
5        129A, 133, 133A, 137, 137A, 137B, 137C, 137D, 139, 141, 141A, 143, 143A, 145,  
6        147, 149, 149A, and 151 of Tangipahoa Parish; and Washington Parish.

7        Section 2. R.S. 18:1276.1 is hereby repealed in its entirety.

8        Section 3.(A) The precincts referenced in this Act are those precincts identified as  
9        Voting Districts (VTDs) in the 2020 Census Redistricting TIGER/Line Shapefiles for the  
10       State of Louisiana as validated through the data verification program of the Louisiana House  
11       of Representatives and the Louisiana Senate and available on the legislature's website on the  
12       effective date of this Section.

13       (B) When a precinct referenced in this Act has been subdivided by action of the  
14       parish governing authority on a nongeographic basis or subdivided by action of the parish  
15       governing authority on a geographic basis in accordance with the provisions of R.S.  
16       18:532.1, the enumeration in this Act of the general precinct designation shall include all  
17       nongeographic and all geographic subdivisions thereof, however such subdivisions may be  
18       designated.

19       (C) The territorial limits of the districts as provided in this Act shall continue in  
20       effect until changed by law regardless of any subsequent change made to the precincts by  
21       the parish governing authority.

22       Section 4. The provisions of this Act shall not reduce the term of office of any  
23       person holding any position or office on the effective date of this Section for which the  
24       appointment or election is based upon a congressional district as composed pursuant to R.S.  
25       18:1276.1. Any position or office that is filled by appointment or election based on a  
26       congressional district and that is to be filled after January 3, 2023, shall be appointed or  
27       elected from a district as it is described in Section 1 of this Act.

28       Section 5.(A) Solely for the purposes of qualifying for election and the election of  
29       representatives to the United States Congress at the regularly scheduled election for

1 representatives to the congress in 2022, the provisions of Section 1 of this Act shall become  
2 effective upon signature of this Act by the governor or, if not signed by the governor, upon  
3 expiration of the time for bills to become law without signature by the governor, as provided  
4 in Article III, Section 18 of the Constitution of Louisiana. If this Act is vetoed by the  
5 governor and subsequently approved by the legislature, the provisions of Section 1 of this  
6 Act shall become effective on the day following such approval for the purposes established  
7 in this Subsection.

8 (B) For subsequent elections of representatives to the United States Congress and  
9 for all other purposes, the provisions of Section 1 of this Act shall become effective at noon  
10 on January 3, 2023.

11 (C) The provisions of Section 2 of this Act shall become effective at noon on  
12 January 3, 2023.

13 (D) The provisions of this Section and Sections 3 and 4 of this Act shall become  
14 effective upon signature of this Act by the governor or, if not signed by the governor, upon  
15 expiration of the time for bills to become law without signature by the governor, as provided  
16 in Article III, Section 18 of the Constitution of Louisiana. If this Act is vetoed by the  
17 governor and subsequently approved by the legislature, the provisions of this Section and  
18 Sections 3 and 4 of this Act shall become effective on the day following such approval.

---

#### DIGEST

The digest printed below was prepared by House Legislative Services. It constitutes no part of the legislative instrument. The keyword, one-liner, abstract, and digest do not constitute part of the law or proof or indicia of legislative intent. [R.S. 1:13(B) and 24:177(E)]

---

HB 12 Original

2022 First Extraordinary Session

Bryant

**Abstract:** Provides for the redistricting of the state's congressional districts and provides for the composition of each of the six congressional districts. Effective for election purposes only for the regular congressional elections in 2022 and for all other purposes at noon on Jan. 3, 2023.

Statistical summaries of proposed law, including district variances from the ideal population of 776,292 and the range of those variances, as well as maps illustrating proposed district boundaries accompany this digest. (*Attached to the bill version on the internet.*)

Present U.S. Constitution (14th Amendment) provides that representatives in congress shall be apportioned among the several states according to their respective numbers, counting the whole number of persons in each state. The U.S. Supreme Court has held that the population

of congressional districts in the same state must be as nearly equal in population as practicable.

Proposed law redraws district boundaries for the six congressional districts, effective upon signature of governor or lapse of time for gubernatorial action for purposes of the 2022 election.

Proposed law retains present districts until noon on January 3, 2023, at which time present law is repealed and proposed districts are effective for all other purposes.

Proposed law specifies that precincts referenced in district descriptions are those precincts identified as Voting Districts (VTDs) in the 2020 Census Redistricting TIGER/Line Shapefiles for the state of La. as validated through the data verification program of the La. legislature. Also specifies that if any such precinct has been subdivided by action of the parish governing authority on a nongeographic basis or subdivided by action of the parish governing authority on a geographic basis in accordance with present law, the enumeration of the general precinct designation shall include all nongeographic and all geographic subdivisions thereof. Further provides that the territorial limits of the districts as enacted shall continue in effect until changed by law regardless of any subsequent change made to the precincts by the parish governing authority.

Proposed law specifies that proposed law does not reduce the term of office of any person holding any position or office on the effective date of proposed law for which the appointment or election is based upon a congressional district as composed pursuant to present law. Specifies that any position or office filled after Jan. 3, 2023, for which the appointment or election is based on a congressional district shall be appointed or elected from a district as it is described in proposed law.

Population data in the summaries accompanying this digest are derived from 2020 Census Redistricting Data (Public Law 94-171), Summary File for Louisiana. Population data, statistical information, and maps are supplied for purposes of information and analysis and comprise no part of proposed law.

Effective for election purposes only for the regular congressional elections in 2022; effective for all other purposes at noon on January 3, 2023.

(Adds R.S. 18:1276; Repeals R.S. 18:1276.1)



# Plan Statistics

Plan: 221ES-40 (Bryant)

<u>Districts:</u>	<u># of Members</u>	<u>Actual Population</u>	<u>Ideal Population</u>	<u>Absolute Deviation</u>	<u>Relative Deviation</u>
District 1	1	775,395	776,292	-897	-0.116%
District 2	1	777,290	776,292	998	0.129%
District 3	1	775,383	776,292	-909	-0.117%
District 4	1	776,515	776,292	223	0.029%
District 5	1	776,383	776,292	91	0.012%
District 6	1	776,791	776,292	499	0.064%
<b>Grand Total:</b>	<b>6</b>	<b>4,657,757</b>	<b>4,657,752</b>		

Ideal Population Per Member: 776292  
 Number of Districts for Plan Type: 6

Range of District Populations: 775,383 to 777,290

Absolute Mean Deviation: 318  
 Absolute Range: -909 to 998  
 Absolute Overall Range: 1,907

Relative Mean Deviation: 0.08%  
 Relative Range: -0.12% to 0.13%  
 Relative Overall Range: 0.25%

<b><i>Ideal - Actual:</i></b>	<b>-5</b>
<b><i>Remainder:</i></b>	<b>5</b>
<b><i>Unassigned Population:</i></b>	<b>0</b>

# Total Population

Plan: 221ES-40 (Bryant)

	Total Population	Total White	Total Black	Total Asian	Total American Indian	Total Other	Total Hispanic	VAP Total	VAP White	VAP Black	VAP Asian	VAP American Indian	VAP Other	VAP Hispanic Total
District 1	775,395	511,048	138,699	25,409	24,314	75,925	95,455	601,772	413,816	97,881	18,895	17,146	54,034	67,037
	100.000%	65.908%	17.888%	3.277%	3.136%	9.792%	12.310%	100.000%	68.766%	16.265%	3.140%	2.849%	8.979%	11.140%
District 2	777,290	268,157	426,292	23,179	8,722	50,940	65,664	599,491	223,083	315,531	18,317	6,684	35,876	45,377
	100.000%	34.499%	54.843%	2.982%	1.122%	6.554%	8.448%	100.000%	37.212%	52.633%	3.055%	1.115%	5.984%	7.569%
District 3	775,383	543,012	165,014	16,683	16,024	34,650	42,755	586,175	422,818	115,352	12,049	11,658	24,298	29,385
	100.000%	70.031%	21.282%	2.152%	2.067%	4.469%	5.514%	100.000%	72.132%	19.679%	2.056%	1.989%	4.145%	5.013%
District 4	776,515	477,922	243,042	12,592	14,986	27,973	33,520	596,321	380,323	174,943	9,349	11,477	20,229	23,598
	100.000%	61.547%	31.299%	1.622%	1.930%	3.602%	4.317%	100.000%	63.778%	29.337%	1.568%	1.925%	3.392%	3.957%
District 5	776,383	316,805	418,436	7,586	9,661	23,895	28,214	591,279	256,356	304,769	5,684	7,294	17,176	19,743
	100.000%	40.805%	53.896%	0.977%	1.244%	3.078%	3.634%	100.000%	43.356%	51.544%	0.961%	1.234%	2.905%	3.339%
District 6	776,791	540,708	151,636	21,839	13,353	49,255	56,941	595,510	428,115	107,293	16,122	9,981	33,999	38,522
	100.000%	69.608%	19.521%	2.811%	1.719%	6.341%	7.330%	100.000%	71.890%	18.017%	2.707%	1.676%	5.709%	6.469%
Grand Total	4,657,757	2,657,652	1,543,119	107,288	87,060	262,638	322,549	3,570,548	2,124,511	1,115,769	80,416	64,240	185,612	223,662
	100.000%	57.059%	33.130%	2.303%	1.869%	5.639%	6.925%	100.000%	59.501%	31.249%	2.252%	1.799%	5.198%	6.264%

# Voter Registration

Plan: 221ES-40 (Bryant)

	Reg Total Dec 2021	Reg White Dec 2021	Reg Black Dec 2021	Reg Other Dec 2021	Reg Dem Total Dec 2021	Reg Rep Total Dec 2021	Reg Other Total Dec 2021
District 1	477,505	364,160	69,110	44,235	151,049	182,010	144,446
	79.350%	76.263%	14.473%	9.264%	31.633%	38.117%	30.250%
District 2	501,975	190,496	273,735	37,744	293,529	82,270	126,176
	83.734%	37.949%	54.532%	7.519%	58.475%	16.389%	25.136%
District 3	466,847	359,102	85,996	21,749	151,425	188,037	127,385
	79.643%	76.921%	18.421%	4.659%	32.436%	40.278%	27.286%
District 4	481,360	325,169	139,441	16,750	168,360	194,375	118,625
	80.722%	67.552%	28.968%	3.480%	34.976%	40.380%	24.644%
District 5	492,491	216,390	259,704	16,397	264,551	114,647	113,293
	83.292%	43.938%	52.733%	3.329%	53.717%	23.279%	23.004%
District 6	474,168	372,672	74,762	26,734	132,090	207,441	134,637
	79.624%	78.595%	15.767%	5.638%	27.857%	43.748%	28.394%
Grand Total	2,894,346	1,827,989	902,748	163,609	1,161,004	968,780	764,562

# Splits

## Plan: 221ES-40 (Bryant)

	Total Population	Total White	Total Black	Total Asian	Total American Indian	Total Other	VAP Total	VAP White	VAP Black	VAP Asian	VAP American Indian	VAP Other	Reg Total Dec 2021	Reg White Dec 2021	Reg Black Dec 2021	Reg Other Dec 2021
District 1																
*Jefferson	264,122	165,364	39,332	13,191	4,912	41,323	210,080	137,865	28,553	9,981	3,694	29,987	161,626	122,793	17,883	20,950
Lafourche	97,557	71,710	15,855	1,025	4,224	4,743	74,619	56,838	11,077	738	2,777	3,189	58,278	48,467	7,164	2,647
*Orleans	68,809	52,898	7,585	2,755	837	4,734	57,095	44,228	6,403	2,141	678	3,645	48,150	38,512	4,594	5,044
Plaquemines	23,515	14,287	5,428	1,317	697	1,786	17,334	10,856	3,857	925	500	1,196	13,908	9,513	3,134	1,261
St. Bernard	43,764	24,497	12,309	1,381	947	4,630	31,775	18,992	7,944	982	688	3,169	25,653	18,233	5,497	1,923
*St. Mary	27,367	17,008	5,738	633	748	3,240	20,661	13,545	3,936	468	567	2,145	15,549	11,681	2,908	960
*St. Tammany	140,681	95,350	29,305	3,364	3,312	9,350	107,703	75,861	20,315	2,421	2,492	6,614	92,621	69,566	16,364	6,691
*Tangipahoa	0	0	0	0	0	0	0	0	0	0	0	0	0	0	0	0
Terrebonne	109,580	69,934	23,147	1,743	8,637	6,119	82,505	55,631	15,796	1,239	5,750	4,089	61,720	45,395	11,566	4,759
District 1	775,395	511,048	138,699	25,409	24,314	75,925	601,772	413,816	97,881	18,895	17,146	54,034	477,505	364,160	69,110	44,235
	100.000%	65.908%	17.888%	3.277%	3.136%	9.792%	100.000%	68.766%	16.265%	3.140%	2.849%	8.979%	79.350%	76.263%	14.473%	9.264%
District 2																
*Ascension	33,255	13,468	17,190	421	352	1,824	24,282	10,468	12,070	275	239	1,230	21,422	9,616	10,837	969
Assumption	21,039	13,722	6,220	96	258	743	16,616	11,145	4,707	57	197	510	14,439	9,700	4,510	229
*Iberia	35,330	16,663	16,622	684	313	1,048	26,397	13,330	11,615	493	236	723	23,300	12,160	10,362	778
*Jefferson	176,659	55,571	86,885	9,833	2,774	21,596	134,574	46,270	63,622	7,711	2,141	14,830	101,475	36,823	51,693	12,959
*Lafayette	28,834	4,510	23,184	147	185	808	21,568	3,909	16,935	112	107	505	19,261	3,007	15,489	765
*Orleans	315,188	73,564	211,384	10,101	2,829	17,310	249,101	66,024	159,665	8,379	2,270	12,763	208,094	53,474	136,931	17,689
St. Charles	52,549	33,550	13,928	837	925	3,309	39,541	26,154	9,890	529	667	2,301	34,985	24,309	8,797	1,879
St. James	20,192	9,973	9,762	60	82	315	15,505	7,883	7,297	31	64	230	14,966	7,254	7,501	211
St. John the Baptist	42,477	13,877	25,196	403	465	2,536	32,503	11,622	18,437	323	350	1,771	28,913	10,219	17,234	1,460
St. Martin	51,767	33,259	15,921	597	539	1,451	39,404	26,278	11,293	407	413	1,013	35,120	23,934	10,381	805
District 2	777,290	268,157	426,292	23,179	8,722	50,940	599,491	223,083	315,531	18,317	6,684	35,876	501,975	190,496	273,735	37,744
	100.000%	34.499%	54.843%	2.982%	1.122%	6.554%	100.000%	37.212%	52.633%	3.055%	1.115%	5.984%	83.734%	37.949%	54.532%	7.519%
District 3																
Acadia	57,576	44,480	10,864	238	573	1,421	42,943	34,071	7,383	173	400	916	37,678	30,555	6,407	716
Allen	22,750	16,327	4,490	246	947	740	17,510	12,751	3,275	182	646	656	12,201	9,478	2,217	506
Beauregard	36,549	29,529	4,649	402	1,052	917	27,489	22,304	3,495	269	773	648	22,294	18,771	2,369	1,154
Calcasieu	216,785	139,772	59,386	4,702	3,536	9,389	163,166	108,789	41,898	3,359	2,604	6,516	120,511	85,659	29,513	5,339
Cameron	5,617	5,232	125	30	75	155	4,358	4,100	79	23	47	109	4,789	4,610	88	91
Evangeline	32,350	21,354	9,235	241	280	1,240	24,408	16,460	6,483	187	217	1,061	20,553	14,566	5,643	344
*Iberia	34,599	22,543	7,934	1,439	481	2,202	26,394	17,965	5,454	1,069	345	1,561	21,226	16,127	3,990	1,109
Jefferson Davis	32,250	25,066	5,837	183	472	692	24,039	19,121	4,006	111	325	476	20,013	16,350	3,202	461
*Lafayette	186,604	134,168	31,959	6,017	2,740	11,720	142,671	106,026	22,120	4,374	2,077	8,074	117,545	95,245	15,395	6,905
Sabine	22,155	15,036	3,861	94	2,723	441	17,064	12,054	2,655	66	1,970	319	14,547	11,023	2,184	1,340

# Splits

## Plan: 221ES-40 (Bryant)

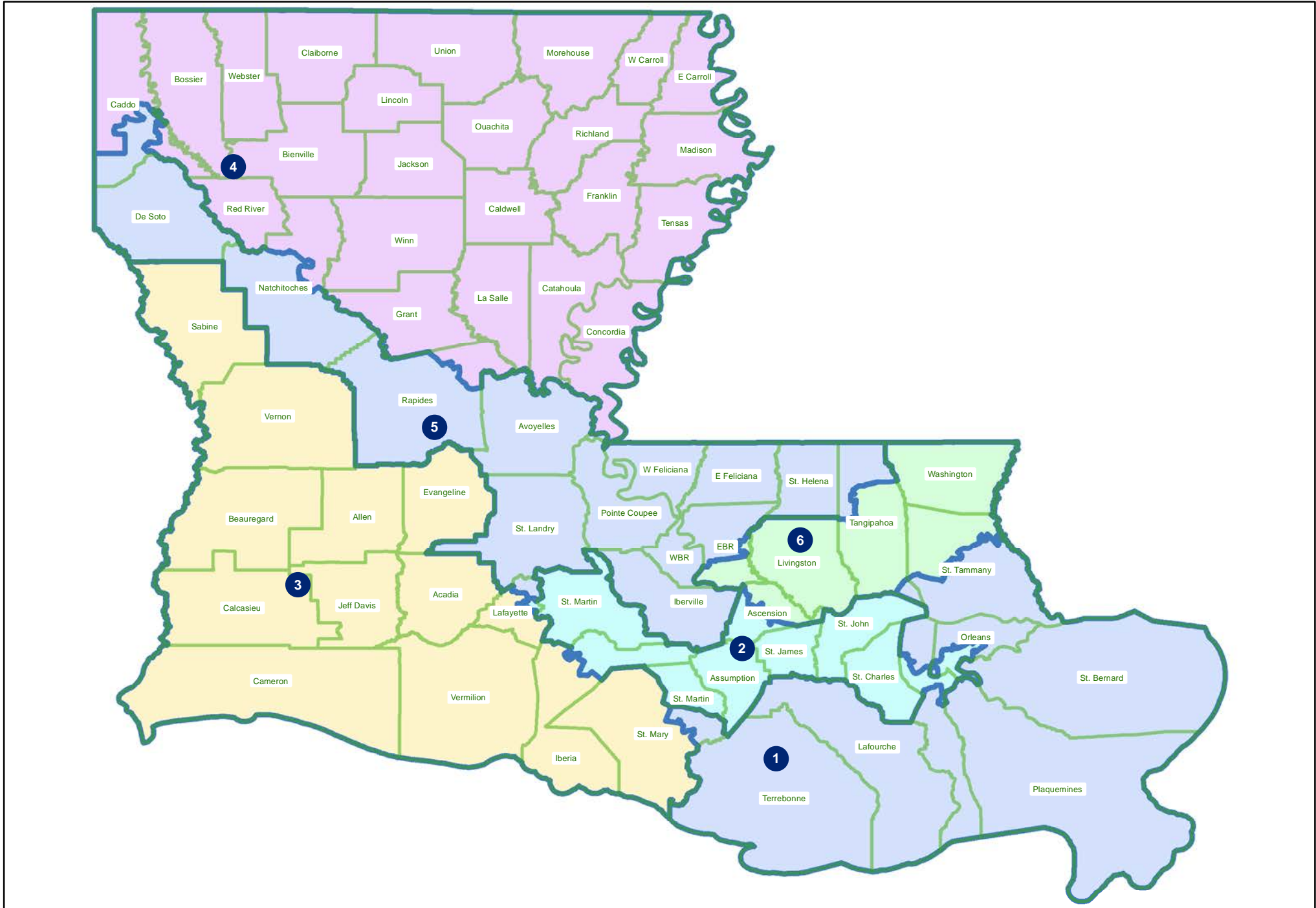
	Total Population	Total White	Total Black	Total Asian	Total American Indian	Total Other	VAP Total	VAP White	VAP Black	VAP Asian	VAP American Indian	VAP Other	Reg Total Dec 2021	Reg White Dec 2021	Reg Black Dec 2021	Reg Other Dec 2021
District 3																
*St. Mary	22,039	9,941	10,253	202	922	721	16,860	8,049	7,584	125	606	496	14,661	7,031	6,983	647
Vermilion	57,359	44,477	8,810	1,447	623	2,002	43,012	34,363	5,787	1,037	488	1,337	36,769	30,505	4,994	1,270
Vernon	48,750	35,087	7,611	1,442	1,600	3,010	36,261	26,765	5,133	1,074	1,160	2,129	24,060	19,182	3,011	1,867
District 3	775,383	543,012	165,014	16,683	16,024	34,650	586,175	422,818	115,352	12,049	11,658	24,298	466,847	359,102	85,996	21,749
	100.000%	70.031%	21.282%	2.152%	2.067%	4.469%	100.000%	72.132%	19.679%	2.056%	1.989%	4.145%	79.643%	76.921%	18.421%	4.659%
District 4																
Bienville	12,981	6,950	5,600	57	207	167	10,073	5,486	4,284	30	162	111	8,847	4,843	3,917	87
Bossier	128,746	81,052	32,551	3,492	3,273	8,378	95,876	62,931	22,440	2,448	2,477	5,580	69,743	50,861	14,838	4,044
*Caddo	112,397	76,855	25,688	3,147	2,492	4,215	88,196	62,551	18,420	2,322	1,905	2,998	74,084	55,535	14,467	4,082
Caldwell	9,645	7,646	1,632	51	150	166	7,478	5,969	1,224	46	116	123	6,031	5,124	818	89
Catahoula	8,906	5,776	2,395	46	119	570	6,951	4,557	1,736	33	87	538	6,467	4,639	1,770	58
Claiborne	14,170	7,263	6,360	88	185	274	11,507	6,258	4,824	55	140	230	8,598	4,632	3,820	146
Concordia	18,687	10,275	7,725	122	233	332	14,217	8,108	5,613	100	167	229	11,964	7,222	4,540	202
East Carroll	7,459	2,054	5,272	29	43	61	5,901	1,773	4,043	19	27	39	4,709	1,306	3,359	44
Franklin	19,774	12,492	6,802	70	205	205	15,028	9,901	4,779	44	153	151	13,159	9,015	4,034	110
Grant	22,169	17,709	3,335	133	644	348	17,527	13,964	2,717	97	507	242	12,688	11,174	1,176	338
Jackson	15,031	9,967	4,166	175	255	468	11,783	7,967	3,125	140	174	377	9,449	6,647	2,610	192
La Salle	14,791	11,348	1,422	283	372	1,366	11,563	8,636	1,065	264	271	1,327	8,792	7,978	637	177
Lincoln	48,396	26,034	19,364	892	662	1,444	38,655	21,306	15,119	744	526	960	25,649	15,672	9,016	961
Madison	10,017	3,475	6,363	20	59	100	7,435	2,906	4,391	9	48	81	7,278	2,494	4,674	110
Morehouse	25,629	12,281	12,484	160	370	334	20,062	10,095	9,300	117	279	271	16,922	8,505	8,131	286
*Natchitoches	9,532	6,054	2,868	68	260	282	7,483	4,955	2,068	60	217	183	6,217	4,337	1,636	244
Ouachita	160,368	88,545	61,217	2,788	2,661	5,157	120,200	69,974	42,290	2,118	2,059	3,759	99,752	60,515	35,658	3,579
*Rapides	24,427	20,739	1,722	333	873	760	18,231	15,758	1,037	239	665	532	14,861	13,662	681	518
Red River	7,620	4,195	3,106	25	171	123	5,714	3,338	2,164	3	116	93	5,631	3,130	2,418	83
Richland	20,043	11,785	7,603	83	258	314	15,383	9,338	5,546	66	203	230	13,662	8,470	4,961	231
Tensas	4,147	1,744	2,312	23	26	42	3,235	1,446	1,728	12	23	26	3,455	1,503	1,917	35
Union	21,107	14,460	5,224	62	338	1,023	16,632	11,807	3,861	39	254	671	15,221	11,066	3,692	463
Webster	36,967	22,735	12,679	208	687	658	28,753	18,144	9,464	154	558	433	22,737	14,938	7,339	460
West Carroll	9,751	7,894	1,425	27	180	225	7,532	6,223	1,010	20	136	143	7,038	5,913	1,040	85
Winn	13,755	8,594	3,727	210	263	961	10,906	6,932	2,695	170	207	902	8,406	5,988	2,292	126
District 4	776,515	477,922	243,042	12,592	14,986	27,973	596,321	380,323	174,943	9,349	11,477	20,229	481,360	325,169	139,441	16,750
	100.000%	61.547%	31.299%	1.622%	1.930%	3.602%	100.000%	63.778%	29.337%	1.568%	1.925%	3.392%	80.722%	67.552%	28.968%	3.480%
District 5																
Avoyelles	39,693	25,625	11,678	434	767	1,189	30,578	20,269	8,311	379	570	1,049	23,426	16,534	6,294	598

# Splits

Plan: 221ES-40 (Bryant)

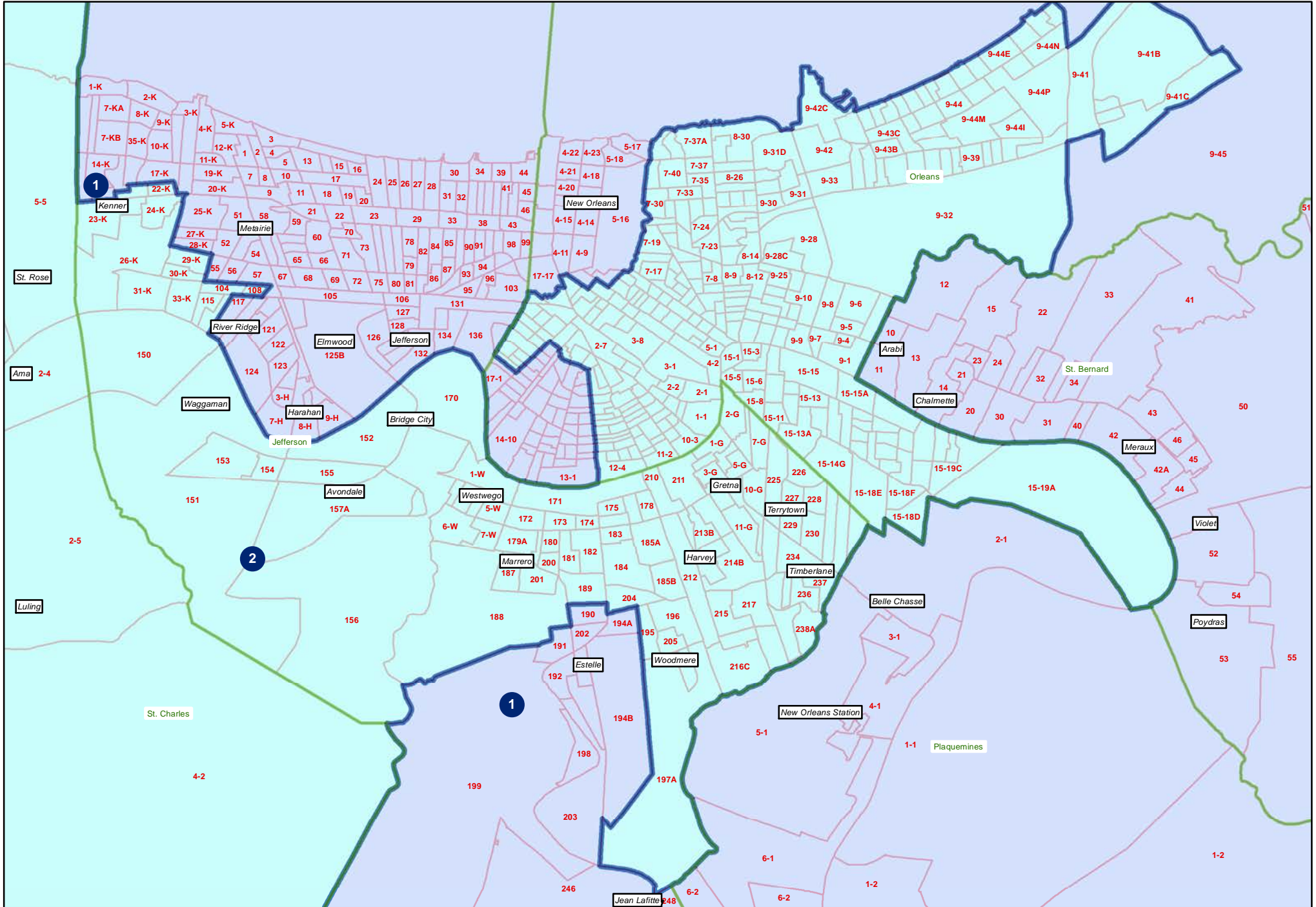
	Total Population	Total White	Total Black	Total Asian	Total American Indian	Total Other	VAP Total	VAP White	VAP Black	VAP Asian	VAP American Indian	VAP Other	Reg Total Dec 2021	Reg White Dec 2021	Reg Black Dec 2021	Reg Other Dec 2021
District 5																
*Caddo	125,451	26,602	93,616	887	1,348	2,998	94,211	22,508	67,939	686	1,053	2,025	77,212	17,578	56,782	2,852
De Soto	26,812	15,284	9,973	117	740	698	20,440	11,909	7,425	86	557	463	18,713	11,330	6,810	573
*East Baton Rouge	198,371	44,453	143,245	2,162	1,485	7,026	149,085	36,144	105,281	1,638	1,158	4,864	126,032	31,355	90,227	4,450
East Feliciana	19,539	11,516	7,341	91	262	329	16,183	9,740	5,918	61	198	266	13,600	7,959	5,186	455
Iberville	30,241	14,833	13,730	202	274	1,202	24,086	12,462	10,232	149	221	1,022	20,462	10,132	9,897	433
*Lafayette	26,315	14,685	9,993	290	285	1,062	19,636	11,673	6,862	178	203	720	16,687	10,393	5,597	697
*Natchitoches	27,983	13,307	12,857	187	601	1,031	21,866	11,055	9,347	138	466	860	16,890	8,513	7,588	789
Pointe Coupee	20,758	12,395	7,504	107	159	593	16,250	10,108	5,502	91	119	430	14,675	9,320	5,121	234
*Rapides	105,596	56,771	40,870	2,095	2,229	3,631	80,561	45,615	29,168	1,547	1,669	2,562	65,315	39,170	23,094	3,051
St. Helena	10,920	4,527	6,031	39	134	189	8,463	3,805	4,371	28	109	150	8,321	3,628	4,565	128
St. Landry	82,540	43,611	35,836	499	636	1,958	61,811	34,209	25,497	353	451	1,301	54,482	30,093	23,005	1,384
*Tangipahoa	19,655	8,006	10,852	100	190	507	14,800	6,430	7,816	85	127	342	12,128	5,356	6,493	279
West Baton Rouge	27,199	14,307	11,170	287	326	1,109	20,526	11,146	8,149	209	219	803	17,141	9,937	6,865	339
West Feliciana	15,310	10,883	3,740	89	225	373	12,783	9,283	2,951	56	174	319	7,407	5,092	2,180	135
District 5	776,383	316,805	418,436	7,586	9,661	23,895	591,279	256,356	304,769	5,684	7,294	17,176	492,491	216,390	259,704	16,397
	100.000%	40.805%	53.896%	0.977%	1.244%	3.078%	100.000%	43.356%	51.544%	0.961%	1.234%	2.905%	83.292%	43.938%	52.733%	3.329%
District 6																
*Ascension	93,245	67,673	15,026	1,879	1,652	7,015	67,675	50,668	10,069	1,239	1,151	4,548	58,495	47,184	7,977	3,334
*East Baton Rouge	258,410	151,616	70,153	14,263	3,242	19,136	206,527	127,737	51,509	10,961	2,589	13,731	153,232	106,877	34,448	11,907
Livingston	142,282	116,855	12,658	1,697	3,111	7,961	105,141	88,432	8,136	1,099	2,311	5,163	84,568	76,062	5,425	3,081
*St. Tammany	123,889	101,291	9,338	2,410	2,348	8,502	94,525	78,760	6,446	1,654	1,669	5,996	86,158	76,158	4,778	5,222
*Tangipahoa	113,502	73,330	31,027	1,374	2,264	5,507	86,691	58,775	21,401	1,015	1,700	3,800	64,128	47,556	14,032	2,540
Washington	45,463	29,943	13,434	216	736	1,134	34,951	23,743	9,732	154	561	761	27,587	18,835	8,102	650
District 6	776,791	540,708	151,636	21,839	13,353	49,255	595,510	428,115	107,293	16,122	9,981	33,999	474,168	372,672	74,762	26,734
	100.000%	69.608%	19.521%	2.811%	1.719%	6.341%	100.000%	71.890%	18.017%	2.707%	1.676%	5.709%	79.624%	78.595%	15.767%	5.638%

221ES-40 (Bryant)  
Statewide



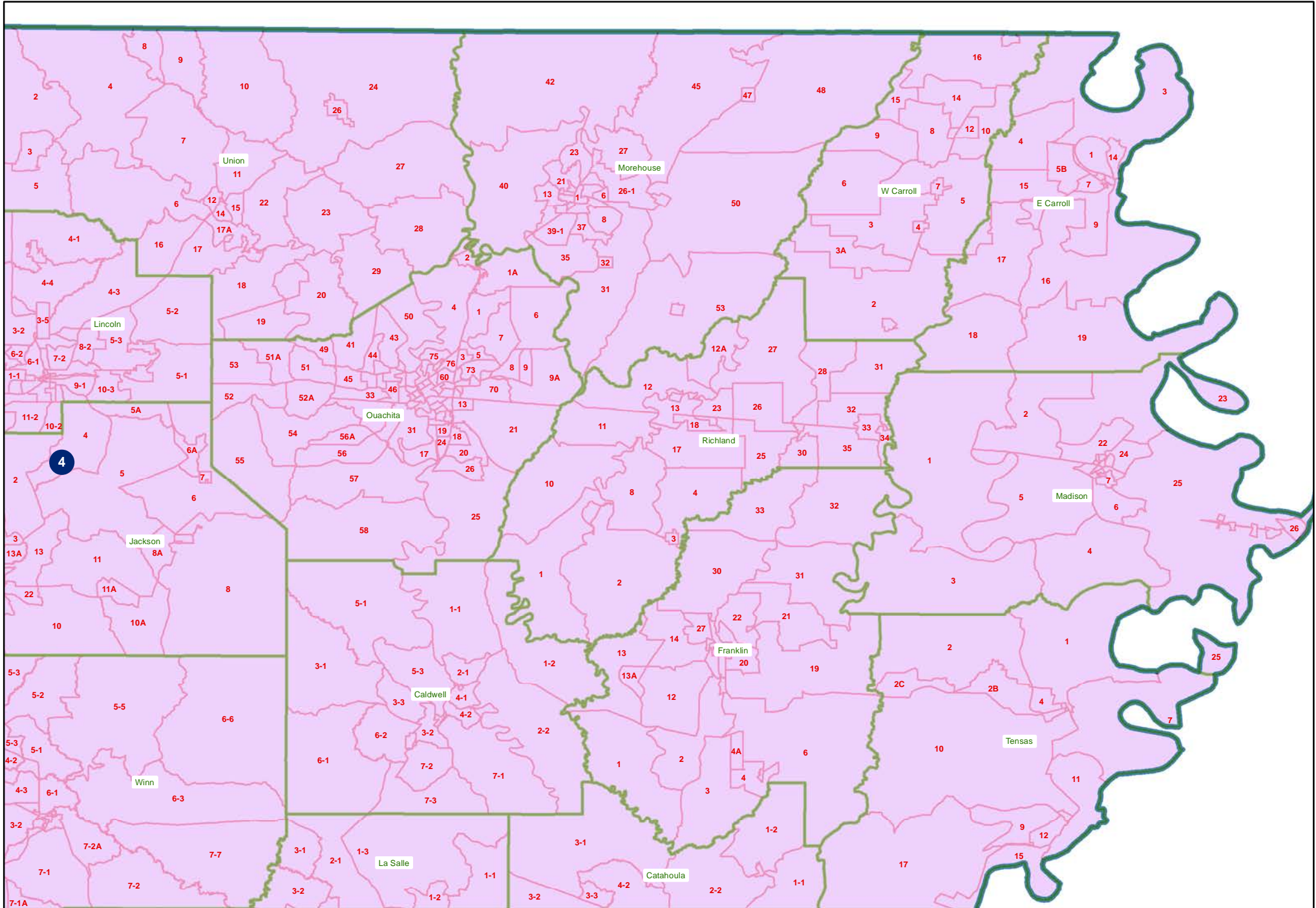
# 221ES-40 (Bryant)

## Orleans and Jefferson

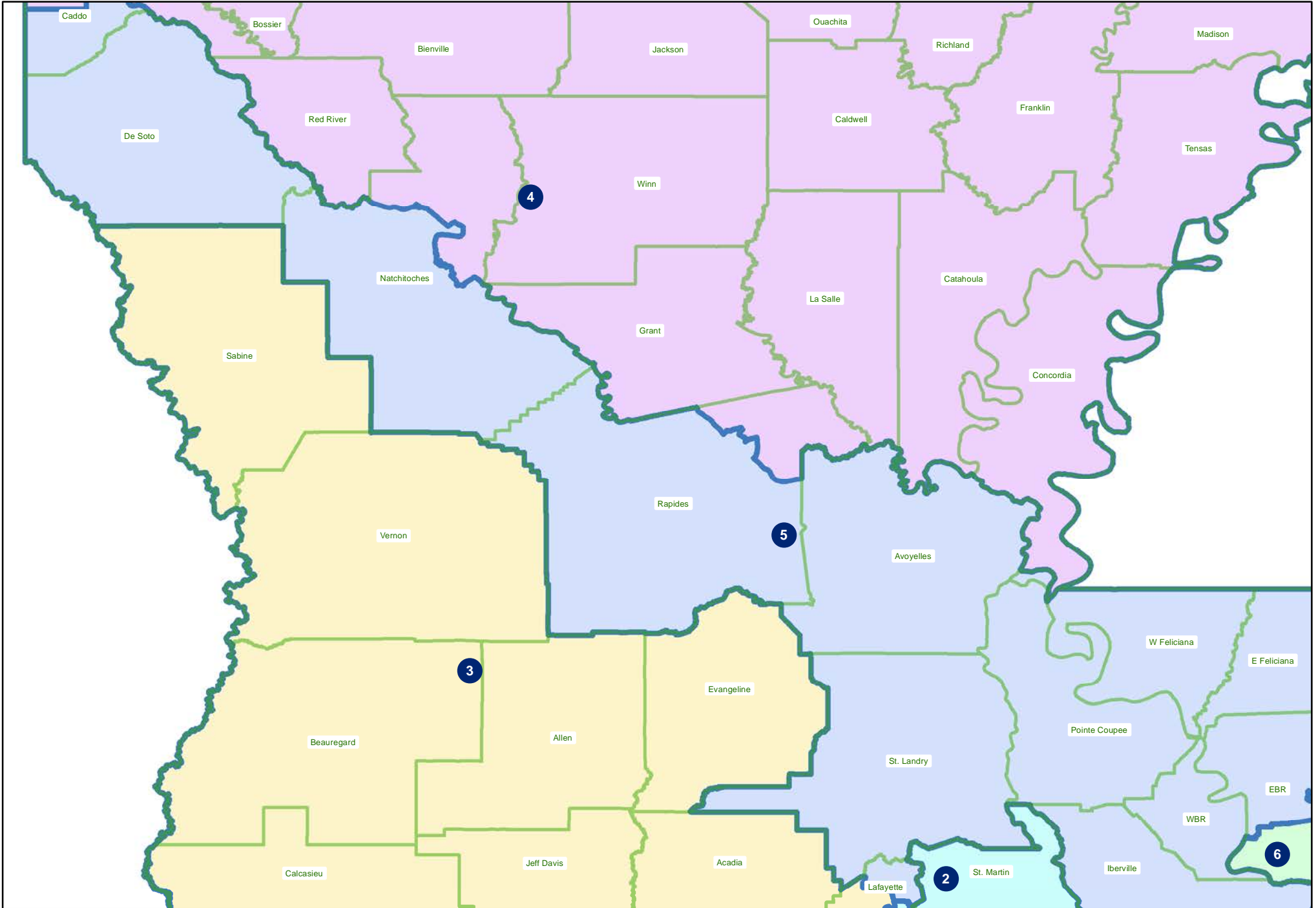




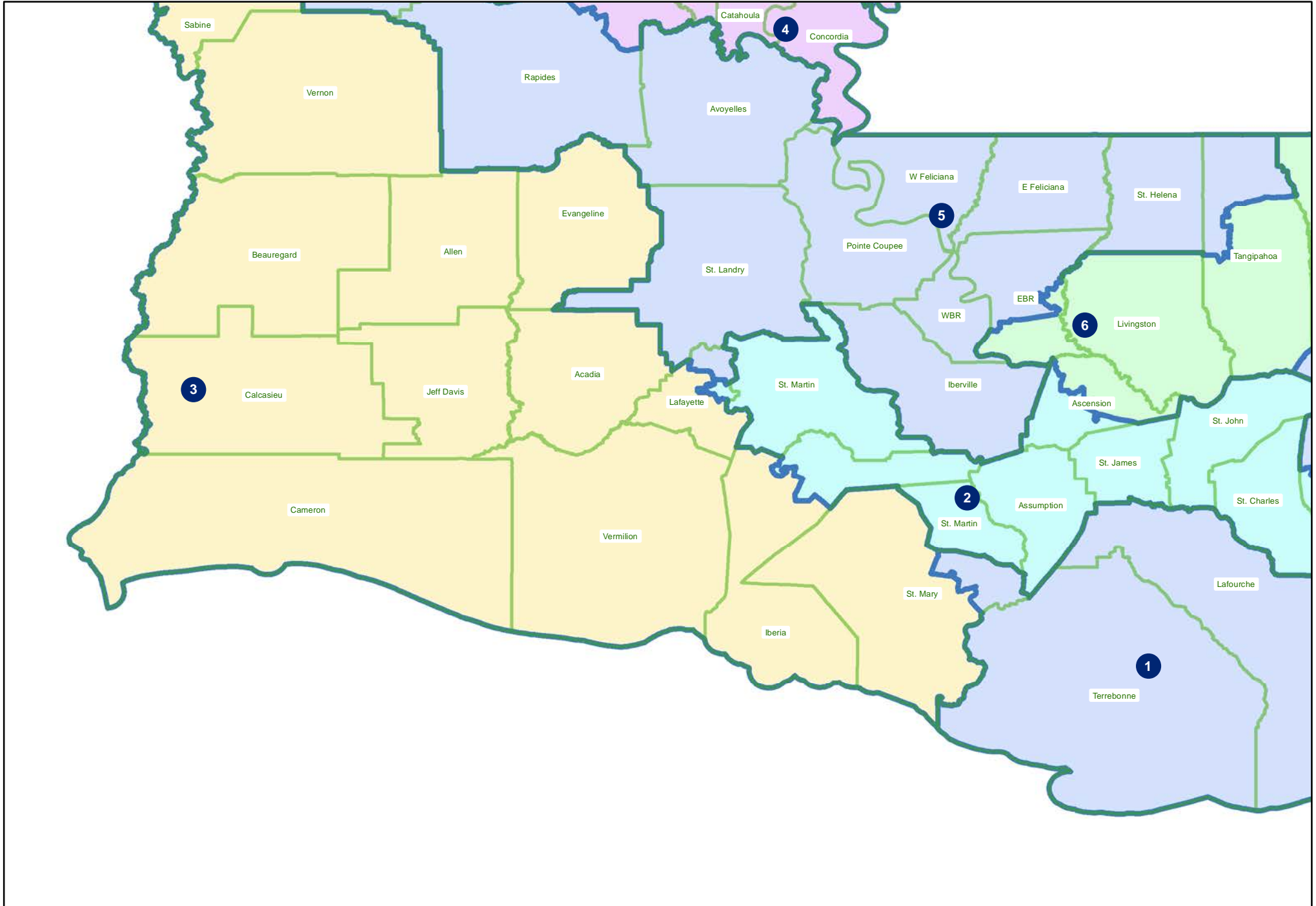
# 221ES-40 (Bryant) Northeast



221ES-40 (Bryant)  
Central

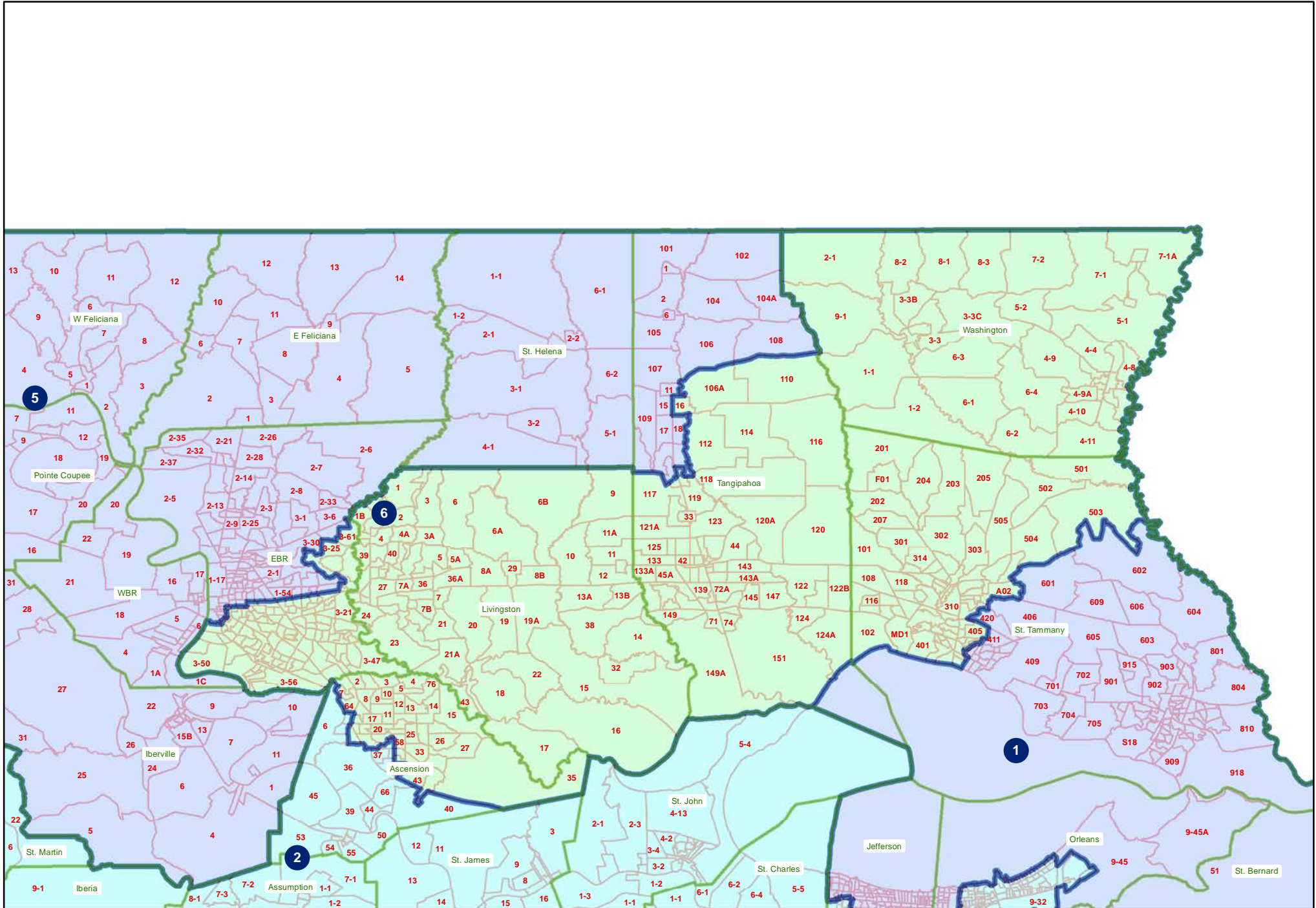


221ES-40 (Bryant)  
Southwest

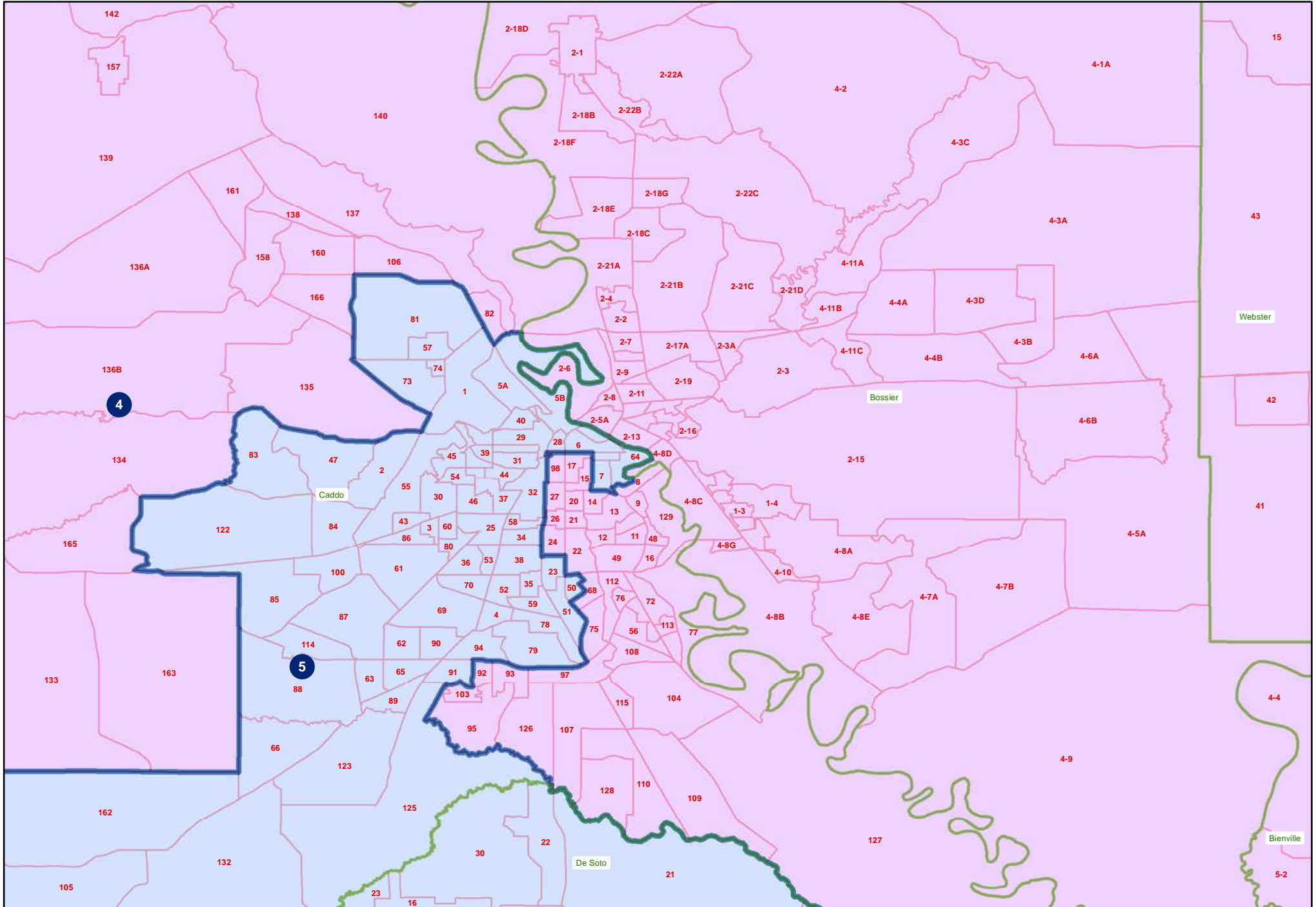


# 221ES-40 (Bryant)

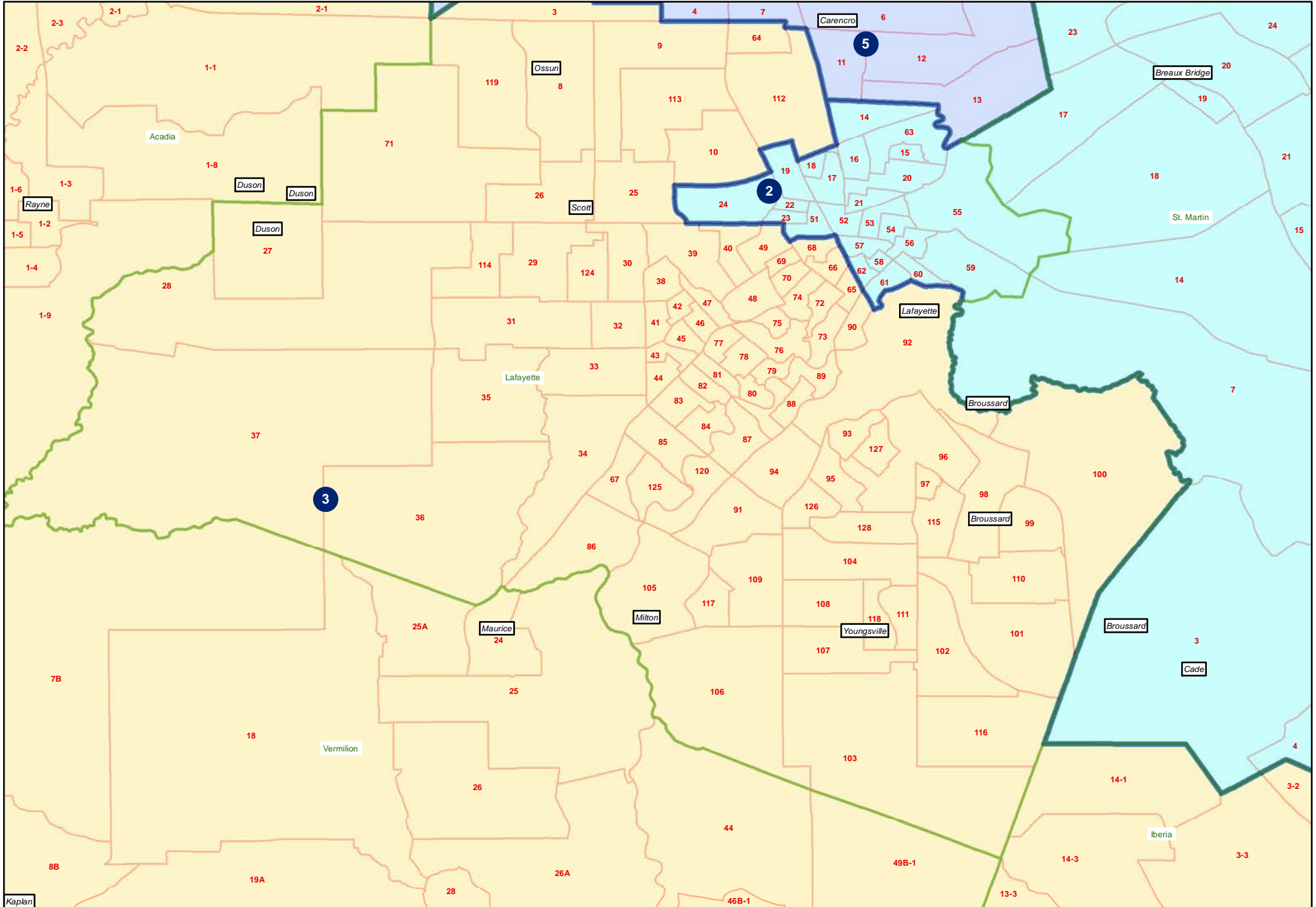
## Florida Parishes



# 221ES-40 (Bryant) Shreveport

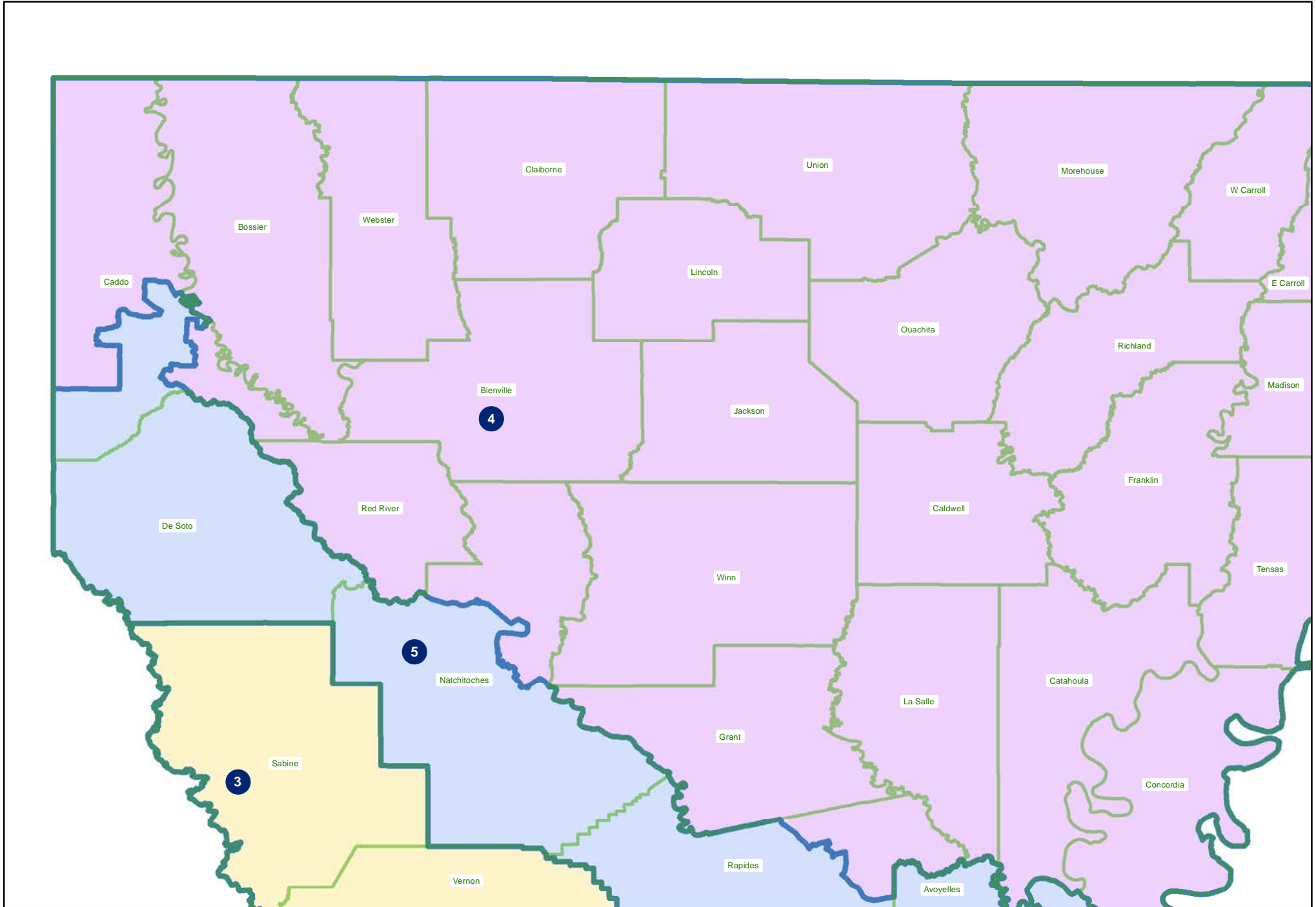


# 221ES-40 (Bryant) Lafayette



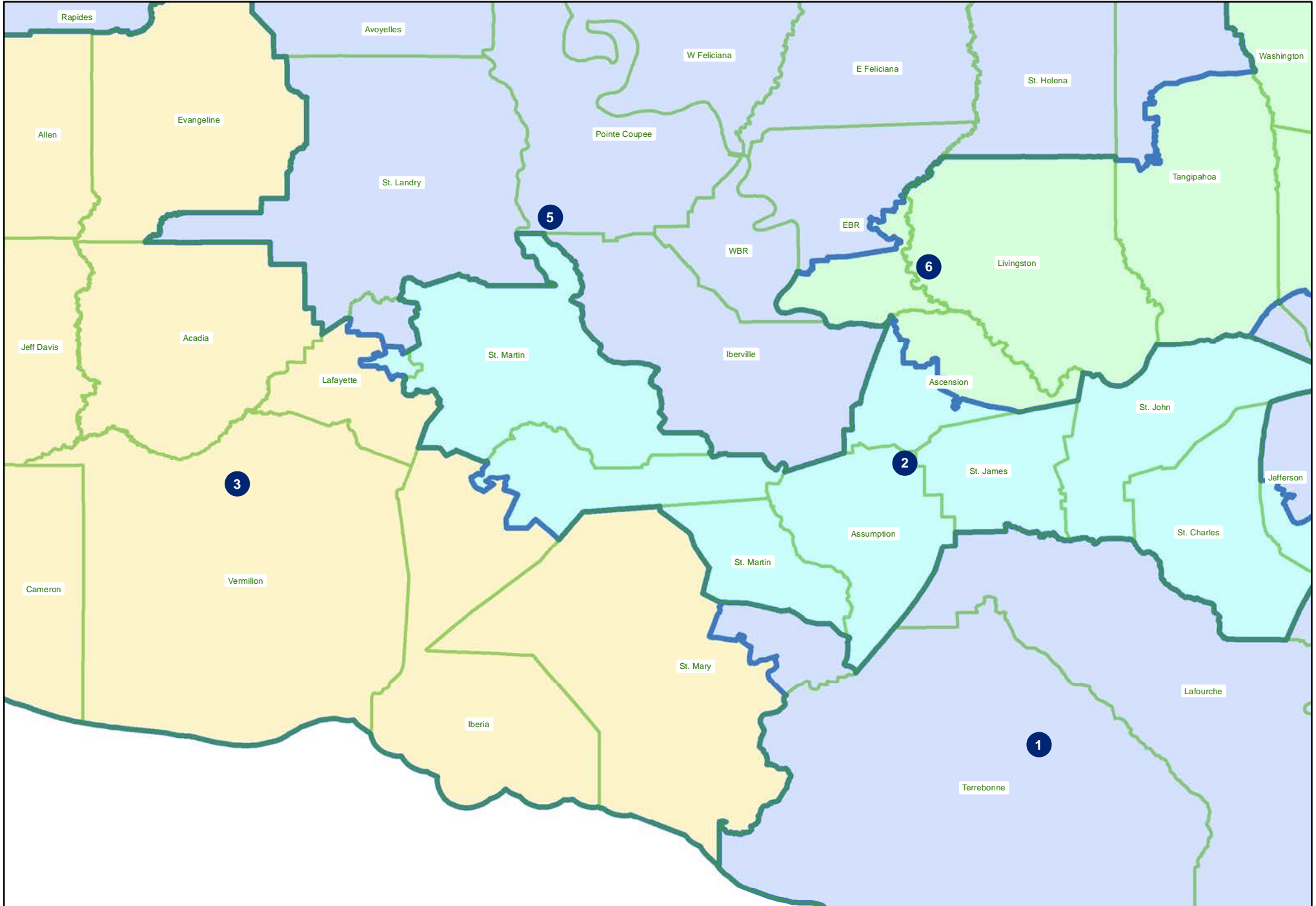


221ES-40 (Bryant)  
Northwest





221ES-40 (Bryant)  
Acadiana



# 221ES-40 (Bryant) Monroe

