

2022 First Extraordinary Session

HOUSE BILL NO. 14

BY REPRESENTATIVES SCHEXNAYDER, BACALA, BAGLEY, BEAULLIEU, BISHOP, BOURRIAQUE, BROWN, BUTLER, CARRIER, COUSSAN, DAVIS, DESHOTEL, DEVILLIER, ECHOLS, EDMONDS, EDMONSTON, FARNUM, FIRMENT, FREEMAN, FRIEMAN, GOUDEAU, HILFERTY, HOLLIS, HORTON, HUVAL, IVEY, MIKE JOHNSON, KERNER, MAGEE, MCFARLAND, MCKNIGHT, MCMAHEN, GREGORY MILLER, MINCEY, NELSON, ORGERON, CHARLES OWEN, PRESSLY, RISER, ROMERO, SCHAMERHORN, ST. BLANC, STAGNI, STEFANSKI, THOMAS, TURNER, VILLIO, WHEAT, WRIGHT, AND ZERINGUE

REAPPORTIONMENT/HOUSE: Provides for the districts for the election of members to the House of Representatives (Item #1)

1 AN ACT

2 To enact R.S. 24:35.3 and to repeal R.S. 24:35.2, relative to redistricting; to provide for the
3 election districts for the House of Representatives of the Legislature of Louisiana;
4 to provide for effectiveness; and to provide for related matters.

5 Be it enacted by the Legislature of Louisiana:

6 Section 1. R.S. 24:35.3 is hereby enacted to read as follows:

7 §35.3. Membership of the House of Representatives

8 The House of Representatives of the Legislature of Louisiana shall be
9 composed of one hundred five members. The state shall be divided into the
10 representative districts provided in this Section. One representative shall be elected
11 from each district.

12 (1) District 1 is composed of Precincts 63, 66, 82, 85, 88, 89, 105, 123, 133,
13 134, 136A, 136B, 137, 138, 139, 140, 142, 143, 144, 145, 146, 149, 151, 154, 155,
14 156, 157, 158, 160, 161, 162, 163, 165, and 166 of Caddo Parish.

1 (2) District 2 is composed of Precincts 2-5A, 2-6, 2-8, 2-12A, 2-12B, 2-12C,
2 2-13, 2-23, and 4-8D of Bossier Parish; and Precincts 5B, 6, 7, 8, 15, 17, 27, 28, 29,
3 30, 31, 32, 37, 39, 40, 41, 44, 45, 46, 54, 64, 67, 71, 98, 99, and 111 of Caddo Parish.

4 (3) District 3 is composed of Precincts 3, 4, 23, 25, 34, 35, 36, 38, 50, 51, 52,
5 53, 58, 59, 60, 70, 78, 79, 80, 91, 92, 93, 94, 95, and 103 of Caddo Parish.

6 (4) District 4 is composed of Precincts 1, 2, 5A, 43, 47, 55, 57, 61, 62, 65,
7 69, 73, 74, 81, 83, 84, 86, 87, 90, 100, 106, 114, 122, and 135 of Caddo Parish.

8 (5) District 5 is composed of Precincts 1-1, 1-2, 1-3, 1-3A, 1-3B, 1-5, 4-7A,
9 4-7B, 4-8B, 4-8C, 4-8E, 4-8G, 4-9, and 4-10 of Bossier Parish; Precincts 77, 97, 107,
10 109, 110, 115, 126, 127, and 128 of Caddo Parish; and Red River Parish.

11 (6) District 6 is composed of Precincts 9, 10, 11, 12, 13, 14, 16, 20, 21, 22,
12 24, 26, 48, 49, 56, 68, 72, 75, 76, 101, 102, 104, 108, 112, 113, and 129 of Caddo
13 Parish.

14 (7) District 7 is composed of Precincts 125 and 132 of Caddo Parish; De
15 Soto Parish; and Precincts 3-4, 5-5, 5-8A, 6-2, 6-3, 6-4, 6-4A, 6-4B, 7-1, 7-2, 7-3,
16 7-4, 7-5, 8-1, 8-1A, 8-2, 9-1, 9-2, and 9-3 of Sabine Parish.

17 (8) District 8 is composed of Precincts 2-1, 2-2, 2-4, 2-7, 2-9, 2-10, 2-11,
18 2-11A, 2-17A, 2-18B, 2-18C, 2-18E, 2-18F, 2-18G, 2-19, 2-21A, 2-21B, 2-21C,
19 2-21D, 2-22A, 2-22B, and 2-22C of Bossier Parish.

20 (9) District 9 is composed of Precincts 1-4, 2-3, 2-3A, 2-14, 2-15, 2-16,
21 2-17B, 2-20, 4-2, 4-3A, 4-3B, 4-3C, 4-3D, 4-4A, 4-4B, 4-5A, 4-6A, 4-6B, 4-8A,
22 4-11A, 4-11B, and 4-11C of Bossier Parish.

23 (10) District 10 is composed of Precincts 2-18D, 3-1, 3-2, 3-3, 3-4, and 4-1A
24 of Bossier Parish; and Webster Parish.

25 (11) District 11 is composed of Precincts 1-1, 1-2, 2-1, 2-2, 2-3, 2-4, 2-5,
26 2-6, 3-1, 3-2, 3-3, and 3-7 of Bienville Parish; Claiborne Parish; and Precincts 1-1,
27 1-2, 1-3, 2-1, 2-2, 3-1, 3-3, 9-1, 9-2, 10-1, 10-2, 10-4, 10-5, 11-1, 11-2, 11-3, 11-4,
28 12-1, 12-2, 12-3, 12-4, 12-5, and 12-6 of Lincoln Parish.

1 (12) District 12 is composed of Precincts 3-2, 3-4, 3-5, 3-6, 4-1, 4-2, 4-3,
2 4-4, 4-5, 4-6, 5-1, 5-2, 5-3, 5-4, 6-1, 6-2, 6-3, 7-1, 7-2, 8-1, 8-2, 8-3, 8-4, 9-3, 9-4,
3 9-5, and 10-3 of Lincoln Parish; and Union Parish.

4 (13) District 13 is composed of Precincts 1-3, 1-4, 3-4, 3-5, 3-6, 4-1, 4-2,
5 4-4, 5-1, 5-2, 5-3, 5-4, 6-1, 6-2, 6-3, 6-4, 7-1, 7-2, 7-3, 7-4, and 7-5 of Bienville
6 Parish; Jackson Parish; Precincts 1-2, 2-1, 2-2, 2-3, 2-4, 2-5, 2-6, 2-7, 2-7A, 2-8, and
7 2-9 of Natchitoches Parish; and Winn Parish.

8 (14) District 14 is composed of Precincts 1, 1A, 2, 4, 5, 6, 7, 36, 42, 43, 50,
9 59, 60, 61, 62, 63, 64, 71, 75, 76, 77, and 78 of Ouachita Parish.

10 (15) District 15 is composed of Precincts 32, 33, 38, 39, 40, 41, 44, 44A, 45,
11 49, 51, 51A, 52, 52A, 53, 54, 55, 56, 56A, and 57 of Ouachita Parish.

12 (16) District 16 is composed of Precincts 1, 3-1, 6, 7, 8, 12, 13, 14, 16, 20,
13 21, 31, 32, 35, 37, 39-1, and 39-2 of Morehouse Parish; and Precincts 3, 8, 9, 9A, 65,
14 65A, 66, 67, 68, 69, 70, 72, 73, 74, and 79 of Ouachita Parish.

15 (17) District 17 is composed of Precincts 10, 11, 12, 13, 14, 15, 16, 17, 18,
16 19, 20, 21, 22, 23, 24, 27, 27A, 28, 29, 30, 31, 34, 35, 37, 46, 47, and 48 of Ouachita
17 Parish.

18 (18) District 18 is composed of Pointe Coupee Parish; Precincts 1A, 4, 18,
19 21, and 22 of West Baton Rouge Parish; and West Feliciana Parish.

20 (19) District 19 is composed of Precincts 1, 2, 3, 4, 5, 6, 7, 8, 9, 10, and 14
21 of Madison Parish; Precincts 23, 24, 26-1, 27, 29, 40, 42, 45, 47, 48, 50, 53, and 54
22 of Morehouse Parish; Richland Parish; and West Carroll Parish.

23 (20) District 20 is composed of Caldwell Parish; Precincts 1-2, 1-3, 1-4, 2-2,
24 3-1, 3-2, 3-3, 3-4, 4-1, 4-2, 5-1, 6-1, 6-2, 6-3, 9-1, 9-2, 9-3, and 9-4 of Catahoula
25 Parish; Precincts 1, 2, 3, 4, 4A, 4B, 6, 12, 13, 13A, 14, 21, 22, 26, 27, 30, 31, 32, and
26 33 of Franklin Parish; Precincts 1-1, 1-2, 1-3, 2-1, 4-2, 5-1, 6-1, 6-2, 9-1, 9-2, 9-3,
27 9-4, and 10-1 of La Salle Parish; and Precincts 25, 26, and 58 of Ouachita Parish.

28 (21) District 21 is composed of Precincts 1-1, 2-1, 6-5, 7-1, 7-3, 7-5, and 8-1
29 of Catahoula Parish; Concordia Parish; East Carroll Parish; Precincts 16, 18, 19, 20,

1 and 24 of Franklin Parish; Precincts 11, 12, 13, 15, 16, 17, 18, 19, 20, 21, 22, 23, 24,
2 25, and 26 of Madison Parish; and Tensas Parish.

3 (22) District 22 is composed of Grant Parish; Precincts 3-1, 3-2, 4-3, 7-1,
4 7-2, 8-2, 8-3, 8-5, 8-6, 8-7, and 9-5 of La Salle Parish; and Precincts 1-3, 1-3A, 1-4,
5 1-4A, 1-6, 1-7, 1-11, 1-12, 1-13, and 4-9 of Natchitoches Parish.

6 (23) District 23 is composed of Precincts 2-7, 3-8, 3-9, 3-12, 3-14, 3-15,
7 3-18, 3-19, 3-20, 4-3, 4-5, 4-6, 4-7, 4-8, 5-8, 5-9, 5-10, 5-11, 5-12, 5-13, 5-15, 6-7,
8 6-8, 6-9, 7-12, 7-15, 7-16, 7-21, 7-27B, 16-8, 16-9, 17-8, 17-9, 17-10, 17-11, 17-12,
9 17-13, 17-13A, 17-14, 17-15, and 17-16 of Orleans Parish.

10 (24) District 24 is composed of Precincts 2, 3, 4, 5, 6, 9, 15, 16, 16B, 17A,
11 19, 19C, 20, 21, and 27A of Beauregard Parish; Precincts 1-1, 1-2, 1-3, 2-1, 2-2,
12 2-2A, 2-3, 2-4, 2-4A, 2-5, 2-6, 2-6A, 3-2, 3-6, 3-6A, 3-7, 3-7B, 3-7X, 4-1, 5-3, and
13 5-8 of Sabine Parish; and Precincts 1-5, 1-5A, 1-7, 1-9, 2-1, 2-1A, 2-2, 2-2A, 2-3,
14 2-3A, 2-4, 2-4E, 3-1, 3-2, 3-3, 3-4, 3-5, 4-3E, 5-1, 5-1A, 5-2, 5-2A, 6-1, 6-2, 6-3,
15 6-4, 7-3, 7-4A, 8-1, 8-2, and 8-3 of Vernon Parish.

16 (25) District 25 is composed of Precincts 1-1, 1-1A, 1-5, 1-5A, 1-8, 1-9,
17 1-9A, 1-10, 1-10A, 1-10B, 1-14, 3-1, 3-2, 3-3, 3-4, 3-5, 3-6, 3-7, 3-8, 3-9, 3-10, 4-1,
18 4-2, 4-3, 4-4, 4-5, 4-6, 4-7, and 4-8 of Natchitoches Parish; and Precincts C22, C23,
19 C30, C31, C33, C34, C35, C36, C37-A, C37-B, C41, C42, S1, S2, S4, S5, S6A, S6B,
20 S8, S9, S11, S13, S14, and S15 of Rapides Parish.

21 (26) District 26 is composed of Precincts C1, C2, C3, C4, C5, C6, C7, C8,
22 C9, C10, C11-A, C11-B, C13, C14, C15, C17, C18, C19, C20, C21, C24, C25, C26,
23 C27, C28, C32, C38-A, C38-B, C39, C40, N1, N2, N3, N4, and N5 of Rapides
24 Parish.

25 (27) District 27 is composed of Precincts N6, N7, N8, N9, N10, N11, N12,
26 N13-A, N13-B, N14-A, N14-B, N15, N16, N17, N18-A, N18-B, N19, N20, N21,
27 N22, N23, N24, N25, N26, N27, N28, N29, and S16 of Rapides Parish.

28 (28) District 28 is composed of Avoyelles Parish; and Precincts 1 and 4 of
29 St. Landry Parish.

1 (29) District 29 is composed of Precincts 1-17, 1-18, 1-19, 1-21, 1-22, 1-23,
2 1-24, 1-25, 1-58, 1-77, 1-85, 2-16, 2-23, and 2-30 of East Baton Rouge Parish; and
3 Precincts 1B, 1C, 2A, 2B, 3, 5, 6, 7A, 7B, 8, 9, 10A, 10B, 11A, 11B, 12, 13A, 13B,
4 14, 15, 16, 17, 19, and 20 of West Baton Rouge Parish.

5 (30) District 30 is composed of Precincts 7, 16A, 17, 18, 18A, 25, 25A, 25B,
6 26, 27, 27B, 27D, 28, and 30 of Beauregard Parish; and Precincts 1-1, 1-1B, 1-2,
7 1-2A, 1-3, 1-3B, 1-3C, 1-3D, 1-4, 1-4A, 1-4B, 1-4C, 1-4D, 1-6, 1-6A, 1-6B, 1-7A,
8 1-7B, 1-8, 1-8A, 1-8C, 1-8E, 1-8F, 4-1, 4-2, 4-3, 4-3A, 4-3C, 4-3F, 4-3G, 4-3J, 4-3K,
9 4-3L, 4-3M, 4-3N, 7-1, 7-2, 7-2A, 7-4, 7-5, 7-5A, and 7-5C of Vernon Parish.

10 (31) District 31 is composed of Precincts 34, 35, 36, 67, 85, 86, 105, 106,
11 109, 117, and 125 of Lafayette Parish; and Precincts 24, 25, 25A, 26, 26A, 32B, 34,
12 34A, 35, 36A-1, 37, 39, 46A, 46B-2, 46B-3, and 46B-4 of Vermilion Parish.

13 (32) District 32 is composed of Allen Parish; Precincts 1, 10, 11, 13, 14,
14 14A, and 22 of Beauregard Parish; and Precincts 560, 561, 562, 600, 601, 602, 603,
15 660, 661, 662, 663, 664, and 760 of Calcasieu Parish.

16 (33) District 33 is composed of Precincts 400, 401, 402, 403, 404, 405, 406,
17 407, 408, 460E, 460W, 461, 465, 466E, 466W, 467, 468, 469, 700, 701, 702, 703,
18 761, and 762 of Calcasieu Parish.

19 (34) District 34 is composed of Precincts 300, 301, 303, 304, 305, 307, 308,
20 309E, 309W, 310, 311, 312, 313E, 313W, 315E, 315W, 318, 319N, 319S, 320E,
21 320W, 321, 322, 323, 324, 328, 329, 330, 361, and 364 of Calcasieu Parish.

22 (35) District 35 is composed of Precincts 12, 12A, 12B, and 13A of
23 Beauregard Parish; and Precincts 160E, 160W, 161, 162E, 162W, 163, 164, 165,
24 166E, 166W, 167, 302, 306, 314, 316E, 317, 360, 440, 441, 463, and 464 of
25 Calcasieu Parish.

26 (36) District 36 is composed of Precincts 316W, 325, 326, 327, 331, 332N,
27 332S, 333, 334, 335, 336, 337, 338, 339, 340, 362, 363, 366, 367, 368, 369, and 372
28 of Calcasieu Parish.

1 (37) District 37 is composed of Precincts 261, 262, 800, 801, 860N, 860S,
2 861E, and 861W of Calcasieu Parish; and Jefferson Davis Parish.

3 (38) District 38 is composed of Precincts 1010, 1020, 1030, 1031, 1040,
4 1041, 1050, 1060, 1080, 1081, 1090, 1091, 1100, 1101, 1110, 1120, 1130, 1140,
5 1150, 1160, 1161, 1162, 1170, 1171, 2010A, 3010, 3020, 3030, 3031, 3032, 3040,
6 3050, 3051, 3052, 3060, 3070, 3071, 4001, 4010, 4011, 4012, 4020, 4021, 4030,
7 4040, 5004, 5010, 5020, 5030, 5040, 5041, and 5050 of Evangeline Parish; and
8 Precincts S7, S10, S17, S18, S19, S20, S21, S22, S23, S24, S25, S26, S27, S28, and
9 S29 of Rapides Parish.

10 (39) District 39 is composed of Precincts 1, 2, 3, 4, 5, 6, 7, 8, 9, 10, 25, 26,
11 29, 30, 31, 71, 113, 114, 119, 122, 123, and 124 of Lafayette Parish.

12 (40) District 40 is composed of Precincts 6, 8, 9, 10, 11, 12, 13, 14, 15, 18,
13 19, 20, 21, 22, 23, 24, 25, 26, 27, 28, 29, 34, 35, 36, and 37 of St. Landry Parish.

14 (41) District 41 is composed of Precincts 2-1, 2-3, 3-1, 3-2, 3-3, 3-4, 3-5,
15 3-7, 4-1, 4-2, 4-6, 7-2, 7-3, and 7-4 of Acadia Parish; Precincts 2010, 2020, 2030,
16 and 2040 of Evangeline Parish; and Precincts 32, 33, 41, 42, 43, 44, 45, 46, 47, 48,
17 49, 50, 51, and 52 of St. Landry Parish.

18 (42) District 42 is composed of Precincts 1-1, 1-2, 1-3, 1-4, 1-5, 1-6, 1-8,
19 1-9, 2-2, 2-5, 4-4, 4-5, 5-1, 5-2, 5-3, 5-4, 5-5, 6-1, 6-2, 6-3, 6-4, 6-5, 6-6, 6-7, 6-8,
20 6-10, 6-12, 6-13, 6-14, 6-15, and 6-16 of Acadia Parish; and Precincts 27, 28, and 37
21 of Lafayette Parish.

22 (43) District 43 is composed of Precincts 87, 88, 89, 91, 92, 93, 94, 95, 96,
23 97, 98, 99, 104, 115, 120, 121, 126, 127, and 128 of Lafayette Parish.

24 (44) District 44 is composed of Precincts 11, 12, 13, 14, 15, 16, 17, 18, 19,
25 20, 21, 22, 23, 24, 51, 52, 53, 54, 55, 56, 57, 58, 59, 60, 61, 62, 63, 64, 65, 66, 68,
26 and 112 of Lafayette Parish.

27 (45) District 45 is composed of Precincts 32, 33, 38, 39, 40, 41, 42, 43, 44,
28 45, 46, 47, 48, 49, 69, 70, 72, 73, 74, 75, 76, 77, 78, 79, 80, 81, 82, 83, 84, and 90 of
29 Lafayette Parish.

1 (46) District 46 is composed of Precincts 2, 3, 5, 7, 7A, 16, 17, 30, 31, 38,
2 39, and 40 of St. Landry Parish; and Precincts 12, 13, 15, 16, 19, 20, 21, 22, 23, 24,
3 25, 26, 27, 28, and 29 of St. Martin Parish.

4 (47) District 47 is composed of Precincts 260, 365, 370, 371N, and 371S of
5 Calcasieu Parish; Cameron Parish; and Precincts 1, 2, 5A, 6, 7A-1, 7B, 8B, 9, 10A,
6 11, 12, 14, 16, 18, 19A, 19A-1, 19B, 20A-2, 20B-1, 21, 21A, 23, 28, 29, 40, and 57B
7 of Vermilion Parish.

8 (48) District 48 is composed of Precincts 1-3, 3-1, 3-2, 6-3, 6-5, 7-1, 7-2,
9 7-4, 7-5, 8-2, 8-3, 9-2, 9-4, 9-5, and 14-1 of Iberia Parish; Precincts 100, 101, 102,
10 110, and 116 of Lafayette Parish; and Precincts 3 and 4 of St. Martin Parish.

11 (49) District 49 is composed of Precincts 2-3, 5-4, 10-3, 10-4, 10-7, 13-1,
12 13-3, and 14-3 of Iberia Parish; Precincts 103, 107, 108, 111, and 118 of Lafayette
13 Parish; and Precincts 38, 41, 42A, 42B, 44, 45A, 46B-1, 49B-1, 49B-2, 50A, 51, 53,
14 and 57A of Vermilion Parish.

15 (50) District 50 is composed of Precincts 1 and 2 of St. Martin Parish; and
16 Precincts 1, 2, 3, 4, 5, 6, 7, 8, 9, 10, 11, 12, 13, 14, 15, 16, 17, 18, 19, 20, 21, 22, 23,
17 24, 25, 26, 27, 28, 29, 30, 31, 32, 33, 34, 35, 36, 38, 39, and 42 of St. Mary Parish.

18 (51) District 51 is composed of Precincts 2-2, 2-3, 2-4, 2-5, 3-1, 3-2, and 4-3
19 of Assumption Parish; Precincts 1-1, 1-2, 1-4, 11-3, and 11-5 of Lafourche Parish;
20 Precincts 37, 40, 41, 43, 44, and 45 of St. Mary Parish; and Precincts 1, 4, 5, 7, 8, 9,
21 10, 11, 27, 64, 65, 67, and 76 of Terrebonne Parish.

22 (52) District 52 is composed of Precincts 12, 13, 14, 15, 16, 17, 18, 35, 36,
23 38, 41, 43, 45, 46, 48, 51, 68, 69, 74, 82, 83, 84, 85, 86, 87, and 90 of Terrebonne
24 Parish.

25 (53) District 53 is composed of Precincts 19, 20, 21, 23, 25, 29, 31, 32, 34,
26 49, 52, 53, 54, 55, 56, 57, 58, 59, 60, 61, 63, 71, 72, 73, 88, 89, 110, and 111 of
27 Terrebonne Parish.

28 (54) District 54 is composed of Precincts 1-GI of Jefferson Parish; and
29 Precincts 3-2, 3-3, 4-1, 4-2, 4-3, 4-4, 4-5, 4-6, 7-3, 8-1, 9-1, 9-2, 10-1, 10-2, 10-3,

1 10-4, 10-5, 10-6, 10-7, 10-8, 10-9, 10-10, 10-11, 10-12, 10-13, 10-14, 10-15, 10-16,
2 11-1, and 11-2 of Lafourche Parish.

3 (55) District 55 is composed of Precincts 1-3, 1-5, 2-1, 2-1A, 2-2, 2-3, 2-3A,
4 2-4, 2-5, 2-6, 2-7, 2-8, 2-9, 2-10, 2-11, 2-12, 2-13, 2-14, 3-1, 3-4, 3-5, 3-6, 5-1, 5-1A,
5 5-1B, 5-2, 6-1, 6-2, 6-3, 6-4, 6-5, 7-1, 7-2, 7-4, and 11-4 of Lafourche Parish.

6 (56) District 56 is composed of Precincts 1-6, 2-1, 2-2, 2-3, 2-4, 2-5, 2-6,
7 3-1, 3-2, 3-3, 4-1, 4-2, 4-3, 5-1, 5-3, 5-4, 5-5, 6-1, 6-2, 6-4, 6-6, 6-7, 6-8, 7-1, 7-2,
8 7-3, and 7-4 of St. Charles Parish; and Precinct 5-7 of St. John the Baptist Parish.

9 (57) District 57 is composed of Precincts 1-1, 1-2, 1-3, 1-5, and 4-4 of St.
10 Charles Parish; and Precincts 1-2, 1-4, 1-5, 2-4, 3-1, 3-2, 3-4, 4-1, 4-2, 4-3, 4-13,
11 4-14, 5-1, 5-4, 5-8, 6-1, 6-3, 6-4, 7-2, 7-3, 7-5, and 7-7 of St. John the Baptist Parish.

12 (58) District 58 is composed of Precincts 23, 28, 30, 31, 32, 36, 37, 39, 42,
13 44, 45, 47, 48, 50, 51, 52, 53, 54, 55, 57, 65, and 73 of Ascension Parish; Precincts
14 1, 12, 13, 14, 15, 16, 17, 18, and 19 of St. James Parish; and Precincts 1-1, 1-3, 2-1,
15 2-2, and 2-3 of St. John the Baptist Parish.

16 (59) District 59 is composed of Precincts 1, 2, 6, 7, 8, 9, 11, 16, 17, 20, 61,
17 62, 63, 64, 71, 72, 77, and 78 of Ascension Parish.

18 (60) District 60 is composed of Precincts 1-1, 1-2, 2-1, 4-1, 4-2, 5-1, 5-2,
19 5-3, 5-5, 6-1, 6-2, 6-3, 7-1, 7-2, 7-3, 8-1, and 9-1 of Assumption Parish; and Iberville
20 Parish.

21 (61) District 61 is composed of Precincts 1-2, 1-7, 1-14, 1-26, 1-27, 1-28,
22 1-29, 1-30, 1-31, 1-32, 1-33, 1-36, 1-37, 1-40, 1-50, 1-54, 1-57, 1-61, 1-62, 1-63,
23 1-64, 1-78, 1-93, and 1-104 of East Baton Rouge Parish.

24 (62) District 62 is composed of Precincts 1-11, 1-84, 2-3, 2-10, 2-12, 2-14,
25 2-15, 2-17, 2-25, 2-26, 2-27, and 2-28 of East Baton Rouge Parish; and East
26 Feliciana Parish.

27 (63) District 63 is composed of Precincts 1-86, 1-91, 1-92, 1-94, 1-95, 1-100,
28 1-101, 2-2, 2-4, 2-5, 2-9, 2-11, 2-13, 2-18, 2-19, 2-20, 2-21, 2-22, 2-24, 2-29, 2-31,
29 2-32, 2-34, 2-35, 2-36, and 2-37 of East Baton Rouge Parish.

1 (64) District 64 is composed of Precincts 2-6 and 2-7 of East Baton Rouge
2 Parish; and Precincts 1, 1A, 1B, 1C, 1D, 2, 2A, 3, 3A, 3B, 4, 4A, 4B, 5, 5B, 5C, 39A,
3 39B, 40, and 40A of Livingston Parish.

4 (65) District 65 is composed of Precincts 1-97, 2-8, 2-33, 3-1, 3-2, 3-6, 3-9,
5 3-12, 3-14, 3-21, 3-25, 3-26, 3-30, 3-32, 3-37, 3-46, 3-54, 3-58, 3-61, and 3-72 of
6 East Baton Rouge Parish.

7 (66) District 66 is composed of Precincts 1-89, 1-98, 1-103, 3-10, 3-16, 3-19,
8 3-22, 3-34, 3-38, 3-43, 3-45, 3-47, 3-53, 3-56, 3-59, 3-63, 3-66, 3-67, 3-70, and 3-71
9 of East Baton Rouge Parish.

10 (67) District 67 is composed of Precincts 1-1, 1-3, 1-4, 1-5, 1-6, 1-10, 1-13,
11 1-15, 1-16, 1-38, 1-45, 1-46, 1-51, 1-67, 1-68, 1-102, 3-20, 3-44, 3-50, 3-57, and
12 3-69 of East Baton Rouge Parish.

13 (68) District 68 is composed of Precincts 1-8, 1-35, 1-39, 1-41, 1-42, 1-44,
14 1-48, 1-56, 1-59, 1-65, 1-73, 1-79, 1-105, 3-17, 3-18, 3-35, 3-36, 3-49, 3-51, and
15 3-52 of East Baton Rouge Parish.

16 (69) District 69 is composed of Precincts 1-34, 1-49, 1-52, 1-53, 1-72, 1-74,
17 1-80, 1-99, 3-3, 3-7, 3-11, 3-13, 3-15, 3-27, 3-29, 3-31, 3-39, 3-41, and 3-60 of East
18 Baton Rouge Parish.

19 (70) District 70 is composed of Precincts 1-12, 1-43, 1-47, 1-66, 1-69, 1-75,
20 1-76, 1-107, 3-4, 3-5, 3-23, 3-33, 3-40, 3-48, 3-55, 3-62, 3-64, 3-65, and 3-68 of East
21 Baton Rouge Parish.

22 (71) District 71 is composed of Precincts 7A, 23, 23A, 23B, 23C, 24, 24B,
23 24C, 25, 26, 26A, 26B, 26C, 27, 28A, 28B, 35, 35A, 36, 39, and 41 of Livingston
24 Parish.

25 (72) District 72 is composed of St. Helena Parish; and Precincts 1, 2, 6, 11,
26 15, 16, 17, 18, 26, 43, 46, 47, 48, 49, 101, 102, 104, 104A, 105, 106, 107, 109, 111A,
27 115B, 119, 123, 129, and 129A of Tangipahoa Parish.

1 (73) District 73 is composed of Precincts 70, 70A, 71, 72, 73, 74, 116, 120,
2 120B, 122, 122A, 122B, 124, 124A, 137, 137A, 137B, 137C, 137D, 143, 143A, 145,
3 147, 149, 149A, and 151 of Tangipahoa Parish.

4 (74) District 74 is composed of Precincts 201, 202, 203, 204, 205, 206, 207,
5 302, 303, 304, 305, 308, 501, 502, 503, 504, 505, 601, 602, 603, 604, 606, 609, A01,
6 A02, A03, A04, C09, F01, and P01 of St. Tammany Parish.

7 (75) District 75 is composed of Washington Parish.

8 (76) District 76 is composed of Precincts 801, 804, 805, 806, 807, 808, 809,
9 810, 811, 812, 813, 814, 816, 817, 818, 909, 918, 922, S10, S11, S16, S17, S20, S21,
10 S23, S24, and S25 of St. Tammany Parish.

11 (77) District 77 is composed of Precincts 101, 104, 105, 106, 107, 108, 110,
12 111, 112, 113, 114, 115, 116, 118, 301, 310, 314, C01, C02, C03, C04, C05, C06,
13 C07, C08, C10, and C11 of St. Tammany Parish.

14 (78) District 78 is composed of Precincts 9, 11, 21, 22, 51, 52, 53, 54, 56, 57,
15 58, 59, 61, 62, 67, 117, 118, 119, 120, 121, 122, 123, 124, 1-H, 2-H, 3-H, 4-H, 5-H,
16 6-H, 7-H, 8-H, and 9-H of Jefferson Parish.

17 (79) District 79 is composed of Precincts 1, 2, 3, 4, 5, 12, 13, 14, 15, 16, 17,
18 1-K, 2-K, 3-K, 4-K, 5-K, 6-KA, 6-KB, 7-KA, 7-KB, 8-K, 9-K, 10-K, 12-K, 34-K,
19 and 35-K of Jefferson Parish.

20 (80) District 80 is composed of Precincts 18, 19, 20, 23, 24, 29, 31, 32, 33,
21 35, 36, 37, 40, 70, 71, 73, 74, 75, 76, 77, 78, 79, 80, 81, 82, 83, 84, 85, and 86 of
22 Jefferson Parish.

23 (81) District 81 is composed of Precincts 34, 35, 40, 43, and 66 of Ascension
24 Parish; Precincts 7B, 7D, 14, 15, 16, 17, 18, 18A, 21, 21A, 22, 31, 32, 33, 34, and 43
25 of Livingston Parish; and Precincts 2, 3, 4, 5, 6, 7, 8, 9, 10 and 11 of St. James
26 Parish.

27 (82) District 82 is composed of Precincts 38, 43, 60, 63, 64, 65, 66, 68, 69,
28 72, 87, 88, 89, 90, 91, 92, 93, 94, 95, 96, 97, 98, 99, 100, 101, 102, 103, 105, 106,

1 125A, 125B, 126, 127, 128, 129, 130, 131, 132, 133, 134, 136, and 138 of Jefferson
2 Parish.

3 (83) District 83 is composed of Precincts 150, 151, 152, 153, 154, 155, 156,
4 157A, 157B, 170, 179B, 180, 187, 188, 191, 200, 201, 1-W, 2-W, 3-W, 4-W, 5-W,
5 6-W, and 7-W of Jefferson Parish.

6 (84) District 84 is composed of Precincts 174, 175, 176, 177, 178, 182, 183,
7 184, 185A, 185B, 189, 190, 192, 193A, 193B, 194A, 194B, 198, 199, 202, 203, 204,
8 246, 247, 248, and 1-L of Jefferson Parish.

9 (85) District 85 is composed of Precincts 225, 226, 227, 228, 229, 230, 231,
10 232A, 234, 235, 1-G, 2-G, 3-G, 4-G, 5-G, 6-G, 7-G, 8-G, 9-G, 10-G, 11-G, 12-G,
11 and 13-G of Jefferson Parish.

12 (86) District 86 is composed of Precincts 27, 28, 33, 40, 40A, 41, 42, 42A,
13 44, 45, 72A, 106A, 108, 110, 112, 114, 117, 118, 120A, 121, 121A, 127, 127A, 139,
14 141, and 141A of Tangipahoa Parish.

15 (87) District 87 is composed of Precincts 171, 172, 173, 179A, 181, 195,
16 196, 197A, 197B, 205, 210, 211, 212, 213A, 213B, 213C, 214A, 214B, 215, 216A,
17 216C, and 217 of Jefferson Parish.

18 (88) District 88 is composed of Precincts 3, 4, 5, 10, 12, 13, 14, 15, 18, 21,
19 22, 24, 25, 26, 27, 33, 41, 58, and 76 of Ascension Parish.

20 (89) District 89 is composed of Precincts 102, 103, 306, 401, 402, 403, 404,
21 405, 407, 410, 413, 414, 415, 416, 417, 418, 419, 421, 426, 427, 429, M01, M02,
22 M03, M04, M05, M06, M07, M08, M11, M12, and MD1 of St. Tammany Parish.

23 (90) District 90 is composed of Precincts 802, 803, 815, 902, 903, 904, 906,
24 907, 910, 911, 912, 914, 916, 921, S01, S02, S03, S04, S05, S06, S07, S08, S09,
25 S13, S15, S18, S19, and S22 of St. Tammany Parish.

26 (91) District 91 is composed of Precincts 1-1, 1-2, 2-6, 10-3, 10-6, 10-7,
27 10-8, 10-9, 10-11, 10-12, 10-13, 10-14, 11-2, 11-3, 11-4, 11-5, 11-8, 11-9, 11-10,
28 11-11, 11-12, 11-13, 11-14, 11-17, 12-1, 12-2, 12-3, 12-4, 12-5, 12-6, 12-7, 12-8,

1 12-9, 12-10, 12-11, 12-12, 12-13, 12-14, 12-16, 12-17, 12-19, 14-20, 14-21, 14-23,
2 14-24A, 14-25, and 14-26 of Orleans Parish.

3 (92) District 92 is composed of Precincts 7, 8, 10, 55, 104, 108, 115, 116,
4 11-K, 13-KA, 13-KB, 14-K, 15-K, 16-K, 17-K, 18-K, 19-K, 20-K, 21-K, 22-K,
5 23-K, 24-K, 25-K, 26-K, 27-K, 28-K, 29-K, 30-K, 31-K, and 33-K of Jefferson
6 Parish.

7 (93) District 93 is composed of Precincts 1-5, 1-6, 2-1, 2-2, 2-4, 3-1, 4-2,
8 5-1, 5-2, 5-3, 5-5, 5-7, 6-1, 6-2, 6-4, 6-6, 7-2, 7-4, 7-5, 7-6, 7-7, 7-8, 7-9A, 7-10,
9 7-11, 7-13, 7-14, 7-20, 8-4, 8-6, 8-7, 8-8, 8-9, 8-12, 9-10, 9-17, 9-19, 9-21, 9-23,
10 9-25, and 9-26 of Orleans Parish.

11 (94) District 94 is composed of Precincts 25, 26, 27, 28, 30, 34, 39, 41, 42,
12 44, 45, and 46 of Jefferson Parish and Precincts 4-9, 4-11, 4-14, 4-15, 4-17, 4-17A,
13 4-18, 4-20, 4-21, 4-22, 4-23, 5-16, 5-17, 5-18, 7-41, 7-42, 17-17, 17-18, 17-18A,
14 17-19, and 17-20 of Orleans Parish.

15 (95) District 95 is composed of Precincts 5A, 6, 6A, 6B, 7, 7C, 8A, 8B, 9,
16 10, 11, 11A, 12, 13A, 13B, 19, 19A, 20, 29, 30, 36A, and 38 of Livingston Parish;
17 and Precincts 45A, 125, 133, and 133A of Tangipahoa Parish.

18 (96) District 96 is composed of Precincts 1-1, 2-1, 3-3, 4-1, 4-2, 4-3, 4-4,
19 6-1, 9-1, 10-1, 10-2, 11-2, 12-1, and 12-3 of Iberia Parish; and Precincts 5, 6, 7, 8,
20 9, 10, 11, 14, 17, and 18 of St. Martin Parish.

21 (97) District 97 is composed of Precincts 7-17, 7-18, 7-19, 7-23, 7-24, 7-25,
22 7-25A, 7-26, 7-27, 7-28, 7-28A, 7-29, 7-30, 7-32, 7-33, 7-35, 7-37, 7-37A, 7-40,
23 8-13, 8-14, 8-15, 8-19, 8-20, 8-21, 8-22, 8-23, 8-24, 8-25, 8-26, 8-27, 8-28, 8-30,
24 9-29, 9-30, 9-30A, 9-31, 9-31A, 9-31B, 9-31D, and 9-33 of Orleans Parish.

25 (98) District 98 is composed of Precincts 13-1, 13-2, 13-3, 13-4, 13-5, 13-6,
26 13-7, 13-8, 13-9, 13-10, 13-11, 13-12, 13-13, 13-14, 13-15, 13-16, 14-1, 14-2, 14-3,
27 14-4, 14-5, 14-6, 14-7, 14-8, 14-9, 14-10, 14-11, 14-12, 14-13A, 14-14, 14-15,
28 14-16, 14-17, 14-18A, 14-19, 16-1, 16-1A, 16-2, 16-3, 16-4, 16-5, 16-6, 16-7, 17-1,
29 17-2, 17-3, 17-4, 17-5, 17-6, and 17-7 of Orleans Parish.

1 (99) District 99 is composed of Precincts 7-1, 8-1, 8-2, 9-1, 9-3, 9-4, 9-5,
2 9-6, 9-7, 9-8, 9-9, 9-11, 9-12, 9-13, 9-14, 9-15, 9-16, 9-28, 9-28C, 9-32, 9-34A, 9-35,
3 9-35A, 9-36, 9-36B, 9-37, 9-38, 9-38A, 9-42, 9-42C, 9-43A, 9-43B, 9-43C, 9-43E,
4 9-43F, 9-43H, 9-43I, 9-43M, and 9-43N of Orleans Parish.

5 (100) District 100 is composed of Precincts 9-39, 9-39B, 9-40, 9-40A,
6 9-40C, 9-41, 9-41A, 9-41B, 9-41C, 9-41D, 9-43G, 9-43J, 9-43K, 9-43L, 9-44,
7 9-44A, 9-44B, 9-44D, 9-44E, 9-44F, 9-44G, 9-44I, 9-44J, 9-44L, 9-44M, 9-44N,
8 9-44O, 9-44P, 9-44Q, 9-45, and 9-45A of Orleans Parish.

9 (101) District 101 is composed of Precincts 1-9, 1-20, 1-55, 1-60, 1-70, 1-71,
10 1-81, 1-82, 1-83, 1-87, 1-88, 1-90, 2-1, 3-8, 3-24, and 3-28 of East Baton Rouge
11 Parish.

12 (102) District 102 is composed of Precincts 15-1, 15-2, 15-3, 15-5, 15-6,
13 15-8, 15-9, 15-10, 15-11, 15-12, 15-12A, 15-13, 15-13A, 15-13B, 15-14, 15-14A,
14 15-14B, 15-14C, 15-14D, 15-14E, 15-14F, 15-14G, 15-15, 15-15A, 15-15B, 15-16,
15 15-17, 15-17A, 15-17B, 15-18, 15-18A, 15-18B, 15-18C, 15-18F, 15-19, 15-19A,
16 15-19B, and 15-19C of Orleans Parish.

17 (103) District 103 is composed of St. Bernard Parish.

18 (104) District 104 is composed of Precincts 307, 309, 312, 313, 406, 408,
19 409, 411, 412, 420, 422, 430, 605, 701, 702, 703, 704, 705, 706, 901, 905, 913, 915,
20 917, M09, and M10 of St. Tammany Parish.

21 (105) District 105 is composed of Precincts 216B, 232B, 236, 237, 238A,
22 and 238B of Jefferson Parish; Precincts 15-18D and 15-18E of Orleans Parish; and
23 Plaquemines Parish.

24 Section 2. R.S. 24:35.2 is hereby repealed in its entirety.

25 Section 3.(A) The precincts referenced in this Act are those precincts identified as
26 Voting Districts (VTDs) in the 2020 Census Redistricting TIGER/Line Shapefiles for the
27 State of Louisiana as validated through the data verification program of the Louisiana House
28 of Representatives and the Louisiana Senate and available on the legislature's website on the
29 effective date of this Section.

1 (B) When a precinct referenced in this Act has been subdivided by action of the
2 parish governing authority on a nongeographic basis or subdivided by action of the parish
3 governing authority on a geographic basis in accordance with the provisions of R.S.
4 18:532.1, the enumeration in this Act of the general precinct designation shall include all
5 nongeographic and all geographic subdivisions thereof, however such subdivisions may be
6 designated.

7 (C) The territorial limits of the districts as provided in this Act shall continue in
8 effect until changed by law regardless of any subsequent change made to the precincts by
9 the parish governing authority.

10 Section 4. The provisions of this Act shall not reduce the term of office of any
11 person holding any position or office on the effective date of this Section for which the
12 appointment or election is based upon a House of Representatives district as composed
13 pursuant to R.S. 24:35.2. Any position or office that is filled by appointment or election
14 based on a House of Representatives district and that is to be filled after January 8, 2024,
15 shall be appointed or elected from a district as it is described in Section 1 of this Act.

16 Section 5.(A) Solely for the purposes of qualifying for election and the election of
17 representatives to the Louisiana House of Representatives at the regularly scheduled election
18 for members of the Louisiana House of Representatives in 2023, the provisions of Section 1
19 of this Act shall become effective upon signature of this Act by the governor or, if not signed
20 by the governor, upon expiration of the time for bills to become law without signature by the
21 governor, as provided in Article III, Section 18 of the Constitution of Louisiana. If this Act
22 is vetoed by the governor and subsequently approved by the legislature, the provisions of
23 Section 1 of this Act shall become effective on the day following such approval for the
24 purposes established in this Subsection.

25 (B) For subsequent elections of representatives to the Louisiana House of
26 Representative and for all other purposes, the provisions of Section 1 of this Act shall
27 become effective at 10:00 a.m. on January 8, 2024.

28 (C) The provisions of Section 2 of this Act shall become effective at 10:00 a.m. on
29 January 8, 2024.

1 (D) The provisions of this Section and Sections 3 and 4 of this Act shall become
 2 effective upon signature of this Act by the governor or, if not signed by the governor, upon
 3 expiration of the time for bills to become law without signature by the governor, as provided
 4 in Article III, Section 18 of the Constitution of Louisiana. If this Act is vetoed by the
 5 governor and subsequently approved by the legislature, the provisions of this Section and
 6 Sections 3 and 4 of this Act shall become effective on the day following such approval.

DIGEST

The digest printed below was prepared by House Legislative Services. It constitutes no part of the legislative instrument. The keyword, one-liner, abstract, and digest do not constitute part of the law or proof or indicia of legislative intent. [R.S. 1:13(B) and 24:177(E)]

HB 14 Original

2022 First Extraordinary Session

Schexnayder

Abstract: Provides for the redistricting of the La. House of Representatives and provides for the composition of each of the 105 House districts. Effective for election purposes for the regular elections in 2023 and for all other purposes at 10:00 a.m. on Jan. 8, 2024.

Statistical summaries of proposed law, including district variances from the ideal population of 44,359 and the range of those variances, as well as maps illustrating proposed district boundaries accompany this digest. (*Attached to the bill version on the internet.*)

Present constitution (Const. Art. III, §6(A)) requires the legislature, by the end of the year following the year in which the state's population is reported to the president of the U.S. for each decennial federal census, to reapportion the representation in each house as equally as practicable on the basis of population shown by the census.

Proposed law redraws district boundaries for the 105 House districts effective upon signature of governor or lapse of time for gubernatorial action for purposes of the 2023 election.

Proposed law retains present districts until 10:00 a.m., Jan. 8, 2024, at which time present law is repealed and proposed districts are effective for all other purposes.

Proposed law specifies that precincts referenced in district descriptions are those precincts identified as Voting Districts (VTDs) in the 2020 Census Redistricting TIGER/Line Shapefiles for the state of La. as validated through the data verification program of the La. legislature. Also specifies that if any such precinct has been subdivided by action of the parish governing authority on a nongeographic basis or subdivided by action of the parish governing authority on a geographic basis in accordance with present law, the enumeration of the general precinct designation shall include all nongeographic and all geographic subdivisions thereof. Further provides that the territorial limits of the districts as enacted shall continue in effect until changed by law regardless of any subsequent change made to the precincts by the parish governing authority.

Proposed law specifies that proposed law does not reduce the term of office of any person holding any position or office on the effective date of proposed law for which the appointment or election is based upon a House district as composed pursuant to present law. Specifies that any position or office filled after Jan. 8, 2023, for which the appointment or

election is based on a House district shall be appointed or elected from a district as it is described in proposed law.

Population data in the summaries accompanying this digest are derived from 2020 Census Redistricting Data (Public Law 94-171), Summary File for Louisiana. Population data, statistical information, and maps are supplied for purposes of information and analysis and comprise no part of proposed law.

Effective for election purposes only for the regular legislative elections in 2023; effective for other purposes at 10:00 a.m., January 8, 2024.

(Adds R.S. 24:35.3; Repeals R.S. 24:35.2)

Plan Statistics

Plan: 221ES-1 (Schexnayder) Original

<u>Districts:</u>	<u># of Members</u>	<u>Actual Population</u>	<u>Ideal Population</u>	<u>Absolute Deviation</u>	<u>Relative Deviation</u>
District 1	1	45,851	44,359	1,492	3.363%
District 2	1	45,642	44,359	1,283	2.892%
District 3	1	46,122	44,359	1,763	3.974%
District 4	1	46,405	44,359	2,046	4.612%
District 5	1	45,375	44,359	1,016	2.290%
District 6	1	44,174	44,359	-185	-0.417%
District 7	1	42,369	44,359	-1,990	-4.486%
District 8	1	45,325	44,359	966	2.178%
District 9	1	43,401	44,359	-958	-2.160%
District 10	1	44,137	44,359	-222	-0.500%
District 11	1	42,458	44,359	-1,901	-4.285%
District 12	1	45,889	44,359	1,530	3.449%
District 13	1	44,187	44,359	-172	-0.388%
District 14	1	44,279	44,359	-80	-0.180%
District 15	1	43,934	44,359	-425	-0.958%
District 16	1	42,328	44,359	-2,031	-4.579%
District 17	1	42,807	44,359	-1,552	-3.499%
District 18	1	42,673	44,359	-1,686	-3.801%
District 19	1	42,717	44,359	-1,642	-3.702%
District 20	1	42,512	44,359	-1,847	-4.164%
District 21	1	44,795	44,359	436	0.983%
District 22	1	42,930	44,359	-1,429	-3.221%
District 23	1	42,708	44,359	-1,651	-3.722%
District 24	1	42,648	44,359	-1,711	-3.857%
District 25	1	43,136	44,359	-1,223	-2.757%
District 26	1	44,636	44,359	277	0.624%
District 27	1	44,225	44,359	-134	-0.302%
District 28	1	42,851	44,359	-1,508	-3.400%
District 29	1	43,794	44,359	-565	-1.274%
District 30	1	42,764	44,359	-1,595	-3.596%
District 31	1	46,510	44,359	2,151	4.849%
District 32	1	42,415	44,359	-1,944	-4.382%
District 33	1	44,243	44,359	-116	-0.262%
District 34	1	45,879	44,359	1,520	3.427%
District 35	1	46,088	44,359	1,729	3.898%
District 36	1	45,062	44,359	703	1.585%
District 37	1	45,146	44,359	787	1.774%
District 38	1	42,309	44,359	-2,050	-4.621%
District 39	1	45,041	44,359	682	1.537%
District 40	1	45,296	44,359	937	2.112%
District 41	1	44,744	44,359	385	0.868%
District 42	1	45,662	44,359	1,303	2.937%
District 43	1	42,630	44,359	-1,729	-3.898%
District 44	1	42,580	44,359	-1,779	-4.010%
District 45	1	43,866	44,359	-493	-1.111%
District 46	1	43,596	44,359	-763	-1.720%
District 47	1	45,467	44,359	1,108	2.498%
District 48	1	44,701	44,359	342	0.771%
District 49	1	45,351	44,359	992	2.236%
District 50	1	43,190	44,359	-1,169	-2.635%
District 51	1	46,319	44,359	1,960	4.418%
District 52	1	43,163	44,359	-1,196	-2.696%
District 53	1	43,160	44,359	-1,199	-2.703%
District 54	1	42,849	44,359	-1,510	-3.404%
District 55	1	45,124	44,359	765	1.725%
District 56	1	46,361	44,359	2,002	4.513%
District 57	1	42,697	44,359	-1,662	-3.747%

Plan Statistics

Plan: 221ES-1 (Schexnayder) Original

<u>Districts:</u>	<u># of Members</u>	<u>Actual Population</u>	<u>Ideal Population</u>	<u>Absolute Deviation</u>	<u>Relative Deviation</u>
District 58	1	43,210	44,359	-1,149	-2.590%
District 59	1	45,699	44,359	1,340	3.021%
District 60	1	46,391	44,359	2,032	4.581%
District 61	1	45,314	44,359	955	2.153%
District 62	1	43,245	44,359	-1,114	-2.511%
District 63	1	46,141	44,359	1,782	4.017%
District 64	1	45,619	44,359	1,260	2.840%
District 65	1	44,189	44,359	-170	-0.383%
District 66	1	43,703	44,359	-656	-1.479%
District 67	1	43,566	44,359	-793	-1.788%
District 68	1	44,607	44,359	248	0.559%
District 69	1	46,550	44,359	2,191	4.939%
District 70	1	45,398	44,359	1,039	2.342%
District 71	1	43,001	44,359	-1,358	-3.061%
District 72	1	42,817	44,359	-1,542	-3.476%
District 73	1	46,503	44,359	2,144	4.833%
District 74	1	44,185	44,359	-174	-0.392%
District 75	1	45,463	44,359	1,104	2.489%
District 76	1	43,228	44,359	-1,131	-2.550%
District 77	1	43,291	44,359	-1,068	-2.408%
District 78	1	44,584	44,359	225	0.507%
District 79	1	45,579	44,359	1,220	2.750%
District 80	1	46,430	44,359	2,071	4.669%
District 81	1	45,474	44,359	1,115	2.514%
District 82	1	46,021	44,359	1,662	3.747%
District 83	1	43,956	44,359	-403	-0.908%
District 84	1	42,520	44,359	-1,839	-4.146%
District 85	1	44,303	44,359	-56	-0.126%
District 86	1	45,736	44,359	1,377	3.104%
District 87	1	45,538	44,359	1,179	2.658%
District 88	1	42,684	44,359	-1,675	-3.776%
District 89	1	45,218	44,359	859	1.936%
District 90	1	43,451	44,359	-908	-2.047%
District 91	1	42,508	44,359	-1,851	-4.173%
District 92	1	45,176	44,359	817	1.842%
District 93	1	44,224	44,359	-135	-0.304%
District 94	1	45,685	44,359	1,326	2.989%
District 95	1	43,337	44,359	-1,022	-2.304%
District 96	1	44,329	44,359	-30	-0.068%
District 97	1	45,713	44,359	1,354	3.052%
District 98	1	43,431	44,359	-928	-2.092%
District 99	1	45,922	44,359	1,563	3.524%
District 100	1	44,360	44,359	1	0.002%
District 101	1	45,346	44,359	987	2.225%
District 102	1	45,264	44,359	905	2.040%
District 103	1	43,764	44,359	-595	-1.341%
District 104	1	45,197	44,359	838	1.889%
District 105	1	43,366	44,359	-993	-2.239%

Plan Statistics

Plan: 221ES-1 (Schexnayder) Original

<u>Districts:</u>	<u># of Members</u>	<u>Actual Population</u>	<u>Ideal Population</u>	<u>Absolute Deviation</u>	<u>Relative Deviation</u>
Grand Total:	105	4,657,757	4,657,695		
Ideal Population Per Member:		44359			
Number of Districts for Plan Type:		105			
Range of District Populations:		42,309	to 46,550		
Absolute Mean Deviation:		40			
Absolute Range:		-2,050	to 2,191		
Absolute Overall Range:		4,241			
Relative Mean Deviation:		2.57%			
Relative Range:		-4.62%	to 4.94%		
Relative Overall Range:		9.56%			

<i>Ideal - Actual:</i>	-62
<i>Remainder:</i>	62
<i>Unassigned Population:</i>	0

Total Population

Plan: 221ES-1 (Schexnayder) Original

	Total Population	Total White	Total Black	Total Asian	Total American Indian	Total Other	Total Hispanic	VAP Total	VAP White	VAP Black	VAP Asian	VAP American Indian	VAP Other	VAP Hispanic Total
District 1	45,851	30,548	11,812	368	1,293	1,830	1,875	35,627	24,569	8,625	270	956	1,207	1,162
	100.000%	66.625%	25.762%	0.803%	2.820%	3.991%	4.089%	100.000%	68.962%	24.209%	0.758%	2.683%	3.388%	3.262%
District 2	45,642	10,318	31,995	625	579	2,125	2,729	35,124	8,969	23,667	536	485	1,467	1,877
	100.000%	22.606%	70.100%	1.369%	1.269%	4.656%	5.979%	100.000%	25.535%	67.381%	1.526%	1.381%	4.177%	5.344%
District 3	46,122	8,906	35,439	379	394	1,004	1,277	33,920	7,615	25,055	275	325	650	831
	100.000%	19.310%	76.838%	0.822%	0.854%	2.177%	2.769%	100.000%	22.450%	73.865%	0.811%	0.958%	1.916%	2.450%
District 4	46,405	9,648	34,937	313	434	1,073	1,205	34,714	8,356	25,017	259	312	770	799
	100.000%	20.791%	75.287%	0.674%	0.935%	2.312%	2.597%	100.000%	24.071%	72.066%	0.746%	0.899%	2.218%	2.302%
District 5	45,375	31,074	9,642	1,614	1,088	1,957	2,429	34,601	24,538	6,718	1,158	832	1,355	1,599
	100.000%	68.483%	21.250%	3.557%	2.398%	4.313%	5.353%	100.000%	70.917%	19.416%	3.347%	2.405%	3.916%	4.621%
District 6	44,174	31,976	8,095	1,657	896	1,550	1,872	35,273	26,363	5,824	1,221	706	1,159	1,324
	100.000%	72.386%	18.325%	3.751%	2.028%	3.509%	4.238%	100.000%	74.740%	16.511%	3.462%	2.002%	3.286%	3.754%
District 7	42,369	25,478	12,487	192	3,143	1,069	1,357	32,477	20,106	9,197	134	2,322	718	908
	100.000%	60.134%	29.472%	0.453%	7.418%	2.523%	3.203%	100.000%	61.908%	28.319%	0.413%	7.150%	2.211%	2.796%
District 8	45,325	30,583	9,812	1,620	976	2,334	2,896	33,068	23,134	6,571	1,060	725	1,578	1,875
	100.000%	67.475%	21.648%	3.574%	2.153%	5.149%	6.389%	100.000%	69.959%	19.871%	3.206%	2.192%	4.772%	5.670%
District 9	43,401	27,697	9,904	907	1,308	3,585	4,204	31,974	21,288	6,742	645	967	2,332	2,669
	100.000%	63.817%	22.820%	2.090%	3.014%	8.260%	9.686%	100.000%	66.579%	21.086%	2.017%	3.024%	7.293%	8.347%
District 10	44,137	27,302	14,976	240	834	785	863	34,617	21,862	11,395	166	670	524	557
	100.000%	61.857%	33.931%	0.544%	1.890%	1.779%	1.955%	100.000%	63.154%	32.917%	0.480%	1.935%	1.514%	1.609%
District 11	42,458	15,733	24,962	456	462	845	1,266	34,439	13,640	19,424	385	369	621	965
	100.000%	37.055%	58.792%	1.074%	1.088%	1.990%	2.982%	100.000%	39.606%	56.401%	1.118%	1.071%	1.803%	2.802%
District 12	45,889	33,374	9,190	596	760	1,969	2,204	36,100	26,914	6,859	458	583	1,286	1,408
	100.000%	72.728%	20.027%	1.299%	1.656%	4.291%	4.803%	100.000%	74.554%	19.000%	1.269%	1.615%	3.562%	3.900%
District 13	44,187	28,375	12,696	468	911	1,737	1,777	34,517	22,633	9,329	371	693	1,491	1,498
	100.000%	64.216%	28.732%	1.059%	2.062%	3.931%	4.022%	100.000%	65.571%	27.027%	1.075%	2.008%	4.320%	4.340%
District 14	44,279	30,426	10,838	1,176	734	1,105	1,139	33,794	24,052	7,507	855	602	778	766
	100.000%	68.714%	24.477%	2.656%	1.658%	2.496%	2.572%	100.000%	71.172%	22.214%	2.530%	1.781%	2.302%	2.267%
District 15	43,934	37,583	3,086	663	1,158	1,444	1,445	32,900	28,508	2,042	448	882	1,020	923
	100.000%	85.544%	7.024%	1.509%	2.636%	3.287%	3.289%	100.000%	86.650%	6.207%	1.362%	2.681%	3.100%	2.805%
District 16	42,328	12,655	27,974	607	423	669	831	32,122	10,743	20,076	514	315	474	573
	100.000%	29.897%	66.089%	1.434%	0.999%	1.581%	1.963%	100.000%	33.444%	62.499%	1.600%	0.981%	1.476%	1.784%
District 17	42,807	10,960	29,027	432	375	2,013	2,363	31,485	9,349	19,918	372	286	1,560	1,797
	100.000%	25.603%	67.809%	1.009%	0.876%	4.703%	5.520%	100.000%	29.694%	63.262%	1.182%	0.908%	4.955%	5.707%
District 18	42,673	27,662	13,144	233	482	1,152	1,515	34,008	22,752	9,838	169	358	891	1,170
	100.000%	64.823%	30.802%	0.546%	1.130%	2.700%	3.550%	100.000%	66.902%	28.928%	0.497%	1.053%	2.620%	3.440%

Total Population

Plan: 221ES-1 (Schexnayder) Original

	Total Population	Total White	Total Black	Total Asian	Total American Indian	Total Other	Total Hispanic	VAP Total	VAP White	VAP Black	VAP Asian	VAP American Indian	VAP Other	VAP Hispanic Total
District 19	42,717	28,608	12,540	178	667	724	973	33,180	22,888	9,122	134	505	531	662
	100.000%	66.971%	29.356%	0.417%	1.561%	1.695%	2.278%	100.000%	68.981%	27.492%	0.404%	1.522%	1.600%	1.995%
District 20	42,512	33,241	7,173	183	800	1,115	1,257	32,665	25,935	5,048	125	613	944	1,004
	100.000%	78.192%	16.873%	0.430%	1.882%	2.623%	2.957%	100.000%	79.397%	15.454%	0.383%	1.877%	2.890%	3.074%
District 21	44,795	17,871	25,733	218	392	581	879	34,051	14,459	18,758	157	276	401	603
	100.000%	39.895%	57.446%	0.487%	0.875%	1.297%	1.962%	100.000%	42.463%	55.088%	0.461%	0.811%	1.178%	1.771%
District 22	42,930	28,091	11,163	521	990	2,165	3,409	34,233	22,577	8,484	455	775	1,942	3,089
	100.000%	65.434%	26.003%	1.214%	2.306%	5.043%	7.941%	100.000%	65.951%	24.783%	1.329%	2.264%	5.673%	9.023%
District 23	42,708	14,694	22,423	834	521	4,236	5,378	35,751	13,246	18,183	721	436	3,165	4,012
	100.000%	34.406%	52.503%	1.953%	1.220%	9.919%	12.592%	100.000%	37.051%	50.860%	2.017%	1.220%	8.853%	11.222%
District 24	42,648	35,515	3,930	429	1,593	1,181	1,551	32,661	27,576	2,738	338	1,163	846	1,025
	100.000%	83.275%	9.215%	1.006%	3.735%	2.769%	3.637%	100.000%	84.431%	8.383%	1.035%	3.561%	2.590%	3.138%
District 25	43,136	28,727	10,931	1,024	1,119	1,335	1,434	33,462	23,026	7,874	739	844	979	952
	100.000%	66.596%	25.341%	2.374%	2.594%	3.095%	3.324%	100.000%	68.812%	23.531%	2.208%	2.522%	2.926%	2.845%
District 26	44,636	12,064	30,302	635	492	1,143	1,374	33,616	10,205	21,624	495	376	916	1,048
	100.000%	27.028%	67.887%	1.423%	1.102%	2.561%	3.078%	100.000%	30.358%	64.327%	1.473%	1.119%	2.725%	3.118%
District 27	44,225	35,391	5,449	669	1,420	1,296	1,440	33,378	27,284	3,656	473	1,068	897	951
	100.000%	80.025%	12.321%	1.513%	3.211%	2.930%	3.256%	100.000%	81.742%	10.953%	1.417%	3.200%	2.687%	2.849%
District 28	42,851	27,967	12,393	452	786	1,253	1,548	32,992	22,079	8,849	390	581	1,093	1,307
	100.000%	65.266%	28.921%	1.055%	1.834%	2.924%	3.613%	100.000%	66.922%	26.822%	1.182%	1.761%	3.313%	3.962%
District 29	43,794	10,625	31,501	298	277	1,093	1,307	32,474	8,404	22,873	219	195	783	917
	100.000%	24.261%	71.930%	0.680%	0.633%	2.496%	2.984%	100.000%	25.879%	70.435%	0.674%	0.600%	2.411%	2.824%
District 30	42,764	27,251	10,068	1,422	1,273	2,750	3,874	31,601	20,697	7,021	1,015	930	1,938	2,529
	100.000%	63.724%	23.543%	3.325%	2.977%	6.431%	9.059%	100.000%	65.495%	22.218%	3.212%	2.943%	6.133%	8.003%
District 31	46,510	32,404	8,776	2,270	571	2,489	2,801	34,544	24,894	5,871	1,623	448	1,708	1,883
	100.000%	69.671%	18.869%	4.881%	1.228%	5.352%	6.022%	100.000%	72.065%	16.996%	4.698%	1.297%	4.944%	5.451%
District 32	42,415	33,328	6,222	346	1,459	1,060	2,350	32,420	25,634	4,651	251	996	888	2,071
	100.000%	78.576%	14.669%	0.816%	3.440%	2.499%	5.540%	100.000%	79.068%	14.346%	0.774%	3.072%	2.739%	6.388%
District 33	44,243	36,566	3,976	667	916	2,118	2,708	32,848	27,777	2,540	480	641	1,410	1,752
	100.000%	82.648%	8.987%	1.508%	2.070%	4.787%	6.121%	100.000%	84.562%	7.733%	1.461%	1.951%	4.292%	5.334%
District 34	45,879	8,998	34,381	506	364	1,630	1,964	34,506	7,684	25,041	365	273	1,143	1,290
	100.000%	19.612%	74.938%	1.103%	0.793%	3.553%	4.281%	100.000%	22.269%	72.570%	1.058%	0.791%	3.312%	3.738%
District 35	46,088	36,612	6,240	607	834	1,795	2,120	34,498	27,967	4,299	396	597	1,239	1,402
	100.000%	79.439%	13.539%	1.317%	1.810%	3.895%	4.600%	100.000%	81.068%	12.462%	1.148%	1.731%	3.592%	4.064%
District 36	45,062	31,758	7,550	2,384	738	2,632	3,124	35,106	25,587	5,269	1,742	589	1,919	2,212
	100.000%	70.476%	16.755%	5.290%	1.638%	5.841%	6.933%	100.000%	72.885%	15.009%	4.962%	1.678%	5.466%	6.301%

Total Population

Plan: 221ES-1 (Schexnayder) Original

	Total Population	Total White	Total Black	Total Asian	Total American Indian	Total Other	Total Hispanic	VAP Total	VAP White	VAP Black	VAP Asian	VAP American Indian	VAP Other	VAP Hispanic Total
District 37	45,146	34,372	8,701	279	701	1,093	1,224	33,393	26,115	5,875	172	497	734	791
	100.000%	76.135%	19.273%	0.618%	1.553%	2.421%	2.711%	100.000%	78.205%	17.594%	0.515%	1.488%	2.198%	2.369%
District 38	42,309	28,794	10,443	355	734	1,983	2,250	31,867	22,260	7,369	264	559	1,415	1,552
	100.000%	68.056%	24.683%	0.839%	1.735%	4.687%	5.318%	100.000%	69.853%	23.124%	0.828%	1.754%	4.440%	4.870%
District 39	45,041	26,687	13,950	553	565	3,286	3,760	33,129	20,966	9,271	374	395	2,123	2,354
	100.000%	59.250%	30.972%	1.228%	1.254%	7.296%	8.348%	100.000%	63.286%	27.985%	1.129%	1.192%	6.408%	7.106%
District 40	45,296	17,937	25,916	272	296	875	936	34,012	14,431	18,563	200	207	611	613
	100.000%	39.600%	57.215%	0.600%	0.653%	1.932%	2.066%	100.000%	42.429%	54.578%	0.588%	0.609%	1.796%	1.802%
District 41	44,744	32,448	9,722	286	461	1,827	2,045	33,068	24,585	6,650	199	349	1,285	1,356
	100.000%	72.519%	21.728%	0.639%	1.030%	4.083%	4.570%	100.000%	74.347%	20.110%	0.602%	1.055%	3.886%	4.101%
District 42	45,662	34,228	9,375	246	502	1,311	1,554	34,194	26,454	6,397	169	347	827	975
	100.000%	74.959%	20.531%	0.539%	1.099%	2.871%	3.403%	100.000%	77.364%	18.708%	0.494%	1.015%	2.419%	2.851%
District 43	42,630	31,321	6,896	1,418	651	2,344	2,834	33,443	25,379	4,841	1,007	547	1,669	2,067
	100.000%	73.472%	16.176%	3.326%	1.527%	5.498%	6.648%	100.000%	75.887%	14.475%	3.011%	1.636%	4.991%	6.181%
District 44	42,580	11,996	28,553	376	330	1,325	1,674	32,915	10,435	21,080	280	228	892	1,098
	100.000%	28.173%	67.057%	0.883%	0.775%	3.112%	3.931%	100.000%	31.703%	64.044%	0.851%	0.693%	2.710%	3.336%
District 45	43,866	31,794	7,010	1,510	668	2,884	3,418	35,458	26,634	4,981	1,235	498	2,110	2,450
	100.000%	72.480%	15.980%	3.442%	1.523%	6.575%	7.792%	100.000%	75.114%	14.048%	3.483%	1.404%	5.951%	6.910%
District 46	43,596	31,499	10,122	390	463	1,122	1,287	32,857	24,533	6,954	264	332	774	871
	100.000%	72.252%	23.218%	0.895%	1.062%	2.574%	2.952%	100.000%	74.666%	21.164%	0.803%	1.010%	2.356%	2.651%
District 47	45,467	37,095	5,340	911	545	1,576	1,853	34,106	28,583	3,411	654	413	1,045	1,161
	100.000%	81.587%	11.745%	2.004%	1.199%	3.466%	4.075%	100.000%	83.806%	10.001%	1.918%	1.211%	3.064%	3.404%
District 48	44,701	32,439	8,075	1,542	608	2,037	2,441	33,239	24,845	5,460	1,052	443	1,439	1,675
	100.000%	72.569%	18.064%	3.450%	1.360%	4.557%	5.461%	100.000%	74.747%	16.426%	3.165%	1.333%	4.329%	5.039%
District 49	45,351	35,230	5,919	1,055	648	2,499	2,832	33,412	26,637	3,919	728	462	1,666	1,890
	100.000%	77.683%	13.052%	2.326%	1.429%	5.510%	6.245%	100.000%	79.723%	11.729%	2.179%	1.383%	4.986%	5.657%
District 50	43,190	24,213	14,653	399	1,530	2,395	2,787	32,989	19,452	10,596	257	1,073	1,611	1,842
	100.000%	56.062%	33.927%	0.924%	3.542%	5.545%	6.453%	100.000%	58.965%	32.120%	0.779%	3.253%	4.883%	5.584%
District 51	46,319	28,786	10,965	808	1,972	3,788	4,340	34,750	22,878	7,499	599	1,329	2,445	2,771
	100.000%	62.147%	23.673%	1.744%	4.257%	8.178%	9.370%	100.000%	65.836%	21.580%	1.724%	3.824%	7.036%	7.974%
District 52	43,163	30,309	7,111	921	2,522	2,300	2,798	32,675	23,989	4,792	624	1,680	1,590	1,858
	100.000%	70.220%	16.475%	2.134%	5.843%	5.329%	6.482%	100.000%	73.417%	14.666%	1.910%	5.142%	4.866%	5.686%
District 53	43,160	25,586	9,584	606	4,933	2,451	2,982	32,374	20,438	6,550	470	3,280	1,636	1,866
	100.000%	59.282%	22.206%	1.404%	11.430%	5.679%	6.909%	100.000%	63.131%	20.232%	1.452%	10.132%	5.053%	5.764%
District 54	42,849	34,944	1,748	515	2,940	2,702	3,257	32,716	27,618	1,001	378	1,957	1,762	2,078
	100.000%	81.551%	4.079%	1.202%	6.861%	6.306%	7.601%	100.000%	84.417%	3.060%	1.155%	5.982%	5.386%	6.352%

Total Population

Plan: 221ES-1 (Schexnayder) Original

	Total Population	Total White	Total Black	Total Asian	Total American Indian	Total Other	Total Hispanic	VAP Total	VAP White	VAP Black	VAP Asian	VAP American Indian	VAP Other	VAP Hispanic Total
District 55	45,124	30,602	11,730	403	811	1,578	1,849	34,922	24,507	8,492	276	526	1,121	1,277
	100.000%	67.818%	25.995%	0.893%	1.797%	3.497%	4.098%	100.000%	70.176%	24.317%	0.790%	1.506%	3.210%	3.657%
District 56	46,361	31,497	10,087	778	865	3,134	3,873	34,813	24,489	7,044	490	616	2,174	2,547
	100.000%	67.939%	21.758%	1.678%	1.866%	6.760%	8.354%	100.000%	70.344%	20.234%	1.408%	1.769%	6.245%	7.316%
District 57	42,697	13,521	25,769	448	467	2,492	3,301	32,500	11,253	18,805	353	348	1,741	2,223
	100.000%	31.667%	60.353%	1.049%	1.094%	5.836%	7.731%	100.000%	34.625%	57.862%	1.086%	1.071%	5.357%	6.840%
District 58	43,210	14,568	25,531	245	456	2,410	3,009	32,720	12,083	18,469	185	346	1,637	2,018
	100.000%	33.714%	59.086%	0.567%	1.055%	5.577%	6.964%	100.000%	36.928%	56.446%	0.565%	1.057%	5.003%	6.167%
District 59	45,699	31,163	8,879	1,446	742	3,469	3,935	32,465	22,714	6,059	950	496	2,246	2,508
	100.000%	68.192%	19.429%	3.164%	1.624%	7.591%	8.611%	100.000%	69.965%	18.663%	2.926%	1.528%	6.918%	7.725%
District 60	46,391	24,932	19,176	264	417	1,602	1,947	36,895	20,648	14,417	181	331	1,318	1,577
	100.000%	53.743%	41.336%	0.569%	0.899%	3.453%	4.197%	100.000%	55.964%	39.076%	0.491%	0.897%	3.572%	4.274%
District 61	45,314	7,224	35,518	487	300	1,785	2,136	34,519	6,456	26,166	369	243	1,285	1,543
	100.000%	15.942%	78.382%	1.075%	0.662%	3.939%	4.714%	100.000%	18.703%	75.802%	1.069%	0.704%	3.723%	4.470%
District 62	43,245	16,735	24,915	227	448	920	1,064	34,027	14,097	18,777	164	344	645	744
	100.000%	38.698%	57.614%	0.525%	1.036%	2.127%	2.460%	100.000%	41.429%	55.183%	0.482%	1.011%	1.896%	2.186%
District 63	46,141	11,704	32,686	405	286	1,060	1,188	34,696	9,005	24,391	263	218	819	888
	100.000%	25.366%	70.839%	0.878%	0.620%	2.297%	2.575%	100.000%	25.954%	70.299%	0.758%	0.628%	2.361%	2.559%
District 64	45,619	38,571	3,333	393	1,116	2,206	2,414	33,368	28,649	2,201	248	838	1,432	1,477
	100.000%	84.550%	7.306%	0.861%	2.446%	4.836%	5.292%	100.000%	85.858%	6.596%	0.743%	2.511%	4.292%	4.426%
District 65	44,189	27,690	10,787	1,101	735	3,876	4,267	32,939	21,818	7,210	803	590	2,518	2,752
	100.000%	62.663%	24.411%	2.492%	1.663%	8.771%	9.656%	100.000%	66.238%	21.889%	2.438%	1.791%	7.644%	8.355%
District 66	43,703	29,474	8,914	2,530	549	2,236	2,577	34,019	23,829	6,304	1,774	431	1,681	1,887
	100.000%	67.442%	20.397%	5.789%	1.256%	5.116%	5.897%	100.000%	70.046%	18.531%	5.215%	1.267%	4.941%	5.547%
District 67	43,566	13,858	23,932	1,821	381	3,574	4,439	35,143	12,561	18,223	1,579	302	2,478	3,097
	100.000%	31.809%	54.933%	4.180%	0.875%	8.204%	10.189%	100.000%	35.743%	51.854%	4.493%	0.859%	7.051%	8.813%
District 68	44,607	30,459	9,539	1,890	521	2,198	2,647	37,541	26,251	7,574	1,525	421	1,770	2,096
	100.000%	68.283%	21.385%	4.237%	1.168%	4.927%	5.934%	100.000%	69.926%	20.175%	4.062%	1.121%	4.715%	5.583%
District 69	46,550	27,658	12,100	2,580	565	3,647	4,121	36,675	23,068	8,709	1,872	447	2,579	2,870
	100.000%	59.416%	25.994%	5.542%	1.214%	7.835%	8.853%	100.000%	62.898%	23.746%	5.104%	1.219%	7.032%	7.825%
District 70	45,398	28,848	10,241	2,832	664	2,813	3,411	37,663	24,678	7,989	2,310	543	2,143	2,600
	100.000%	63.545%	22.558%	6.238%	1.463%	6.196%	7.514%	100.000%	65.523%	21.212%	6.133%	1.442%	5.690%	6.903%
District 71	43,001	32,754	5,534	748	846	3,119	3,575	32,034	25,280	3,621	509	620	2,004	2,224
	100.000%	76.170%	12.869%	1.739%	1.967%	7.253%	8.314%	100.000%	78.916%	11.304%	1.589%	1.935%	6.256%	6.943%
District 72	42,817	17,117	23,861	231	464	1,144	1,428	32,423	14,031	17,077	170	351	794	962
	100.000%	39.977%	55.728%	0.540%	1.084%	2.672%	3.335%	100.000%	43.275%	52.669%	0.524%	1.083%	2.449%	2.967%

Total Population

Plan: 221ES-1 (Schexnayder) Original

	Total Population	Total White	Total Black	Total Asian	Total American Indian	Total Other	Total Hispanic	VAP Total	VAP White	VAP Black	VAP Asian	VAP American Indian	VAP Other	VAP Hispanic Total
District 73	46,503	34,945	7,829	500	1,087	2,142	2,487	35,345	27,400	5,289	333	806	1,517	1,654
	100.000%	75.146%	16.835%	1.075%	2.337%	4.606%	5.348%	100.000%	77.522%	14.964%	0.942%	2.280%	4.292%	4.680%
District 74	44,185	36,574	3,335	384	1,046	2,846	3,184	34,817	29,335	2,377	268	770	2,067	2,249
	100.000%	82.775%	7.548%	0.869%	2.367%	6.441%	7.206%	100.000%	84.255%	6.827%	0.770%	2.212%	5.937%	6.459%
District 75	45,463	29,943	13,434	216	736	1,134	1,410	34,951	23,743	9,732	154	561	761	901
	100.000%	65.862%	29.549%	0.475%	1.619%	2.494%	3.101%	100.000%	67.932%	27.845%	0.441%	1.605%	2.177%	2.578%
District 76	43,228	25,840	12,530	1,373	900	2,585	3,241	32,553	20,549	8,505	1,019	669	1,811	2,199
	100.000%	59.776%	28.986%	3.176%	2.082%	5.980%	7.497%	100.000%	63.125%	26.127%	3.130%	2.055%	5.563%	6.755%
District 77	43,291	34,787	3,850	847	826	2,981	3,361	32,072	26,253	2,672	578	554	2,015	2,271
	100.000%	80.356%	8.893%	1.957%	1.908%	6.886%	7.764%	100.000%	81.856%	8.331%	1.802%	1.727%	6.283%	7.081%
District 78	44,584	31,095	4,572	1,409	912	6,596	8,084	35,713	25,947	3,315	1,021	686	4,744	5,678
	100.000%	69.745%	10.255%	3.160%	2.046%	14.795%	18.132%	100.000%	72.654%	9.282%	2.859%	1.921%	13.284%	15.899%
District 79	45,579	27,198	5,976	3,506	648	8,251	10,343	35,828	22,474	4,170	2,626	483	6,075	7,480
	100.000%	59.672%	13.111%	7.692%	1.422%	18.103%	22.692%	100.000%	62.727%	11.639%	7.329%	1.348%	16.956%	20.878%
District 80	46,430	28,223	7,621	2,133	740	7,713	9,687	37,425	24,074	5,600	1,694	547	5,510	6,876
	100.000%	60.786%	16.414%	4.594%	1.594%	16.612%	20.864%	100.000%	64.326%	14.963%	4.526%	1.462%	14.723%	18.373%
District 81	45,474	33,928	8,380	501	722	1,943	2,172	34,007	26,090	5,786	307	521	1,303	1,371
	100.000%	74.610%	18.428%	1.102%	1.588%	4.273%	4.776%	100.000%	76.719%	17.014%	0.903%	1.532%	3.832%	4.032%
District 82	46,021	33,637	5,562	1,506	772	4,544	5,560	38,114	28,538	4,423	1,154	593	3,406	4,126
	100.000%	73.091%	12.086%	3.272%	1.677%	9.874%	12.081%	100.000%	74.875%	11.605%	3.028%	1.556%	8.936%	10.825%
District 83	43,956	13,203	25,303	1,485	588	3,377	4,559	33,127	11,018	18,076	1,199	475	2,359	3,131
	100.000%	30.037%	57.564%	3.378%	1.338%	7.683%	10.372%	100.000%	33.260%	54.566%	3.619%	1.434%	7.121%	9.452%
District 84	42,520	25,391	9,171	2,797	1,245	3,916	5,043	33,192	20,705	6,617	2,109	936	2,825	3,528
	100.000%	59.715%	21.569%	6.578%	2.928%	9.210%	11.860%	100.000%	62.379%	19.936%	6.354%	2.820%	8.511%	10.629%
District 85	44,303	16,171	16,447	2,071	1,038	8,576	10,726	33,223	13,397	11,800	1,612	782	5,632	7,053
	100.000%	36.501%	37.124%	4.675%	2.343%	19.358%	24.211%	100.000%	40.324%	35.518%	4.852%	2.354%	16.952%	21.229%
District 86	45,736	29,603	12,145	703	922	2,363	2,917	35,545	24,147	8,512	566	696	1,624	1,988
	100.000%	64.726%	26.555%	1.537%	2.016%	5.167%	6.378%	100.000%	67.934%	23.947%	1.592%	1.958%	4.569%	5.593%
District 87	45,538	9,472	27,818	3,492	464	4,292	5,560	34,404	7,965	20,324	2,723	358	3,034	3,881
	100.000%	20.800%	61.087%	7.668%	1.019%	9.425%	12.210%	100.000%	23.151%	59.075%	7.915%	1.041%	8.819%	11.281%
District 88	42,684	33,617	5,060	525	752	2,730	3,157	31,082	25,270	3,208	324	521	1,759	1,966
	100.000%	78.758%	11.855%	1.230%	1.762%	6.396%	7.396%	100.000%	81.301%	10.321%	1.042%	1.676%	5.659%	6.325%
District 89	45,218	38,271	1,907	1,159	733	3,148	3,525	34,586	29,787	1,288	775	537	2,199	2,419
	100.000%	84.637%	4.217%	2.563%	1.621%	6.962%	7.796%	100.000%	86.124%	3.724%	2.241%	1.553%	6.358%	6.994%
District 90	43,451	28,287	10,147	1,069	1,044	2,904	3,582	33,711	22,946	7,077	778	809	2,101	2,468
	100.000%	65.101%	23.353%	2.460%	2.403%	6.683%	8.244%	100.000%	68.067%	20.993%	2.308%	2.400%	6.232%	7.321%

Total Population

Plan: 221ES-1 (Schexnayder) Original

	Total Population	Total White	Total Black	Total Asian	Total American Indian	Total Other	Total Hispanic	VAP Total	VAP White	VAP Black	VAP Asian	VAP American Indian	VAP Other	VAP Hispanic Total
District 91	42,508	19,571	18,417	1,155	557	2,808	3,844	35,352	17,328	14,399	1,008	449	2,168	2,867
	100.000%	46.041%	43.326%	2.717%	1.310%	6.606%	9.043%	100.000%	49.016%	40.730%	2.851%	1.270%	6.133%	8.110%
District 92	45,176	18,067	13,955	1,621	783	10,750	13,248	34,713	14,774	10,471	1,198	585	7,685	9,328
	100.000%	39.992%	30.890%	3.588%	1.733%	23.796%	29.325%	100.000%	42.560%	30.164%	3.451%	1.685%	22.139%	26.872%
District 93	44,224	13,723	26,917	983	526	2,075	2,758	36,953	12,998	20,916	912	424	1,703	2,159
	100.000%	31.031%	60.865%	2.223%	1.189%	4.692%	6.236%	100.000%	35.174%	56.602%	2.468%	1.147%	4.609%	5.843%
District 94	45,685	32,527	4,595	2,428	622	5,513	6,874	35,786	26,239	3,381	1,782	469	3,915	4,855
	100.000%	71.198%	10.058%	5.315%	1.361%	12.067%	15.047%	100.000%	73.322%	9.448%	4.980%	1.311%	10.940%	13.567%
District 95	43,337	33,545	6,530	302	831	2,129	2,272	32,291	25,664	4,402	199	625	1,401	1,381
	100.000%	77.405%	15.068%	0.697%	1.918%	4.913%	5.243%	100.000%	79.477%	13.632%	0.616%	1.936%	4.339%	4.277%
District 96	44,329	17,157	24,619	986	343	1,224	1,530	33,348	13,991	17,510	744	242	861	1,043
	100.000%	38.704%	55.537%	2.224%	0.774%	2.761%	3.451%	100.000%	41.955%	52.507%	2.231%	0.726%	2.582%	3.128%
District 97	45,713	9,061	33,591	825	364	1,872	2,629	36,692	7,777	26,543	664	304	1,404	1,933
	100.000%	19.821%	73.482%	1.805%	0.796%	4.095%	5.751%	100.000%	21.195%	72.340%	1.810%	0.829%	3.826%	5.268%
District 98	43,431	30,858	7,785	1,656	521	2,611	5,210	37,340	26,801	6,639	1,352	427	2,121	4,583
	100.000%	71.051%	17.925%	3.813%	1.200%	6.012%	11.996%	100.000%	71.776%	17.780%	3.621%	1.144%	5.680%	12.274%
District 99	45,922	6,165	37,398	421	275	1,663	2,230	33,962	5,702	26,528	326	224	1,182	1,563
	100.000%	13.425%	81.438%	0.917%	0.599%	3.621%	4.856%	100.000%	16.789%	78.111%	0.960%	0.660%	3.480%	4.602%
District 100	44,360	1,697	36,219	4,481	198	1,765	2,723	32,734	1,445	26,444	3,589	148	1,108	1,655
	100.000%	3.826%	81.648%	10.101%	0.446%	3.979%	6.138%	100.000%	4.414%	80.785%	10.964%	0.452%	3.385%	5.056%
District 101	45,346	9,663	28,608	2,585	396	4,094	4,657	33,658	8,406	20,270	1,959	299	2,724	3,069
	100.000%	21.309%	63.088%	5.701%	0.873%	9.028%	10.270%	100.000%	24.975%	60.223%	5.820%	0.888%	8.093%	9.118%
District 102	45,264	9,815	30,967	1,264	395	2,823	3,685	34,363	8,490	22,534	1,051	296	1,992	2,499
	100.000%	21.684%	68.414%	2.793%	0.873%	6.237%	8.141%	100.000%	24.707%	65.576%	3.059%	0.861%	5.797%	7.272%
District 103	43,764	24,497	12,309	1,381	947	4,630	6,010	31,775	18,992	7,944	982	688	3,169	4,028
	100.000%	55.975%	28.126%	3.156%	2.164%	10.579%	13.733%	100.000%	59.770%	25.001%	3.090%	2.165%	9.973%	12.677%
District 104	45,197	32,882	6,874	942	1,111	3,388	3,951	34,489	25,751	4,842	657	822	2,417	2,704
	100.000%	72.753%	15.209%	2.084%	2.458%	7.496%	8.742%	100.000%	74.664%	14.039%	1.905%	2.383%	7.008%	7.840%
District 105	43,366	20,177	15,866	3,122	852	3,349	4,139	32,692	15,556	11,733	2,392	633	2,378	2,788
	100.000%	46.527%	36.586%	7.199%	1.965%	7.723%	9.544%	100.000%	47.584%	35.890%	7.317%	1.936%	7.274%	8.528%
Grand Total	4,657,757	2,657,652	1,543,119	107,288	87,060	262,638	322,549	3,570,548	2,124,511	1,115,769	80,416	64,240	185,612	223,662
	100.000%	57.059%	33.130%	2.303%	1.869%	5.639%	6.925%	100.000%	59.501%	31.249%	2.252%	1.799%	5.198%	6.264%

Voter Registration

Plan: 221ES-1 (Schexnayder) Original

	Reg Total Dec 2021	Reg White Dec 2021	Reg Black Dec 2021	Reg Other Dec 2021	Reg Dem Total Dec 2021	Reg Rep Total Dec 2021	Reg Other Total Dec 2021
District 1	29,636	21,167	7,286	1,183	9,482	12,550	7,604
	83.184%	71.423%	24.585%	3.992%	31.995%	42.347%	25.658%
District 2	24,701	6,034	17,406	1,261	15,304	2,810	6,587
	70.325%	24.428%	70.467%	5.105%	61.957%	11.376%	26.667%
District 3	27,955	5,919	21,036	1,000	17,877	3,502	6,576
	82.415%	21.173%	75.250%	3.577%	63.949%	12.527%	23.524%
District 4	29,554	6,655	21,784	1,115	19,131	3,897	6,526
	85.136%	22.518%	73.709%	3.773%	64.732%	13.186%	22.082%
District 5	28,929	21,559	5,669	1,701	7,937	13,604	7,388
	83.607%	74.524%	19.596%	5.880%	27.436%	47.025%	25.538%
District 6	29,716	23,749	4,153	1,814	8,300	13,401	8,015
	84.246%	79.920%	13.976%	6.104%	27.931%	45.097%	26.972%
District 7	29,001	18,957	8,360	1,684	11,259	10,995	6,747
	89.297%	65.367%	28.827%	5.807%	38.823%	37.912%	23.265%
District 8	25,714	19,762	4,474	1,478	5,693	13,658	6,363
	77.761%	76.853%	17.399%	5.748%	22.140%	53.115%	24.745%
District 9	23,297	17,153	4,856	1,288	6,278	10,360	6,659
	72.862%	73.628%	20.844%	5.529%	26.948%	44.469%	28.583%
District 10	26,878	17,803	8,497	578	10,185	10,336	6,357
	77.644%	66.236%	31.613%	2.150%	37.893%	38.455%	23.651%
District 11	22,210	8,512	13,097	601	11,889	5,145	5,176
	64.491%	38.325%	58.969%	2.706%	53.530%	23.165%	23.305%
District 12	30,585	23,884	5,701	1,000	8,538	14,720	7,327
	84.723%	78.091%	18.640%	3.270%	27.916%	48.128%	23.956%
District 13	27,887	19,386	7,983	518	10,500	10,938	6,449
	80.792%	69.516%	28.626%	1.857%	37.652%	39.223%	23.125%
District 14	28,565	22,037	5,335	1,193	7,485	14,131	6,949
	84.527%	77.147%	18.677%	4.176%	26.203%	49.470%	24.327%
District 15	28,610	26,188	1,512	910	4,707	16,302	7,601
	86.960%	91.534%	5.285%	3.181%	16.452%	56.980%	26.568%
District 16	25,806	7,823	17,228	755	15,035	4,856	5,915
	80.337%	30.315%	66.760%	2.926%	58.262%	18.817%	22.921%
District 17	24,864	6,189	17,855	820	15,049	3,551	6,264
	78.971%	24.891%	71.811%	3.298%	60.525%	14.282%	25.193%
District 18	26,210	17,412	8,359	439	12,110	8,255	5,845
	77.070%	66.433%	31.892%	1.675%	46.204%	31.496%	22.301%
District 19	29,799	21,134	8,187	478	10,194	12,725	6,880
	89.810%	70.922%	27.474%	1.604%	34.209%	42.703%	23.088%
District 20	28,432	23,979	4,056	397	8,460	13,690	6,282
	87.041%	84.338%	14.266%	1.396%	29.755%	48.150%	22.095%
District 21	30,272	12,546	17,332	394	17,045	7,090	6,137
	88.902%	41.444%	57.254%	1.302%	56.306%	23.421%	20.273%
District 22	23,657	17,689	5,152	816	7,809	9,698	6,150
	69.106%	74.773%	21.778%	3.449%	33.009%	40.994%	25.997%
District 23	26,881	10,175	14,275	2,431	18,051	1,537	7,293
	75.190%	37.852%	53.104%	9.044%	67.152%	5.718%	27.131%
District 24	27,148	23,899	1,910	1,339	6,349	13,379	7,420
	83.121%	88.032%	7.036%	4.932%	23.387%	49.282%	27.332%
District 25	28,813	20,535	6,816	1,462	9,794	11,646	7,373
	86.107%	71.270%	23.656%	5.074%	33.992%	40.419%	25.589%
District 26	25,898	7,612	17,204	1,082	15,209	3,965	6,724
	77.041%	29.392%	66.430%	4.178%	58.727%	15.310%	25.963%
District 27	27,359	23,852	2,442	1,065	6,243	13,757	7,359
	81.967%	87.182%	8.926%	3.893%	22.819%	50.283%	26.898%
District 28	25,511	18,169	6,706	636	11,646	7,960	5,905
	77.325%	71.220%	26.287%	2.493%	45.651%	31.202%	23.147%
District 29	28,344	7,392	20,288	664	18,167	3,816	6,361
	87.282%	26.080%	71.578%	2.343%	64.095%	13.463%	22.442%
District 30	19,669	13,145	4,713	1,811	6,118	7,280	6,271
	62.242%	66.831%	23.962%	9.207%	31.105%	37.013%	31.883%
District 31	29,125	22,703	4,651	1,771	7,789	13,067	8,269
	84.313%	77.950%	15.969%	6.081%	26.743%	44.865%	28.391%
District 32	23,936	20,197	2,898	841	7,831	10,011	6,094
	73.831%	84.379%	12.107%	3.514%	32.716%	41.824%	25.460%
District 33	25,303	22,539	1,755	1,009	6,705	10,767	7,831
	77.031%	89.076%	6.936%	3.988%	26.499%	42.552%	30.949%
District 34	24,763	4,669	19,017	1,077	16,545	2,241	5,977
	71.764%	18.855%	76.796%	4.349%	66.813%	9.050%	24.137%
District 35	27,369	23,439	2,812	1,118	6,882	12,426	8,061
	79.335%	85.641%	10.274%	4.085%	25.145%	45.402%	29.453%

Voter Registration

Plan: 221ES-1 (Schexnayder) Original

	Reg Total Dec 2021	Reg White Dec 2021	Reg Black Dec 2021	Reg Other Dec 2021	Reg Dem Total Dec 2021	Reg Rep Total Dec 2021	Reg Other Total Dec 2021
District 36	24,206	20,005	2,718	1,483	6,738	10,620	6,848
	68.951%	82.645%	11.229%	6.127%	27.836%	43.873%	28.291%
District 37	26,907	21,683	4,544	680	9,322	10,031	7,554
	80.577%	80.585%	16.888%	2.527%	34.645%	37.280%	28.074%
District 38	27,252	19,965	6,561	726	11,324	10,131	5,797
	85.518%	73.261%	24.075%	2.664%	41.553%	37.175%	21.272%
District 39	27,179	18,506	7,431	1,242	9,575	9,759	7,845
	82.040%	68.089%	27.341%	4.570%	35.229%	35.906%	28.864%
District 40	31,126	13,283	17,048	795	17,711	6,946	6,469
	91.515%	42.675%	54.771%	2.554%	56.901%	22.316%	20.783%
District 41	27,547	21,382	5,479	686	9,887	10,779	6,881
	83.304%	77.620%	19.890%	2.490%	35.891%	39.129%	24.979%
District 42	29,384	23,260	5,513	611	10,718	11,518	7,148
	85.933%	79.159%	18.762%	2.079%	36.476%	39.198%	24.326%
District 43	27,924	23,016	3,196	1,712	6,115	14,214	7,595
	83.497%	82.424%	11.445%	6.131%	21.899%	50.902%	27.199%
District 44	27,179	7,843	18,188	1,148	15,980	3,925	7,274
	82.573%	28.857%	66.919%	4.224%	58.795%	14.441%	26.763%
District 45	29,111	23,984	3,333	1,794	8,344	11,913	8,854
	82.100%	82.388%	11.449%	6.163%	28.663%	40.923%	30.415%
District 46	29,283	22,299	6,260	724	11,481	10,609	7,193
	89.123%	76.150%	21.378%	2.472%	39.207%	36.229%	24.564%
District 47	28,914	25,681	2,332	901	9,227	12,047	7,640
	84.777%	88.819%	8.065%	3.116%	31.912%	41.665%	26.423%
District 48	29,363	23,496	4,420	1,447	7,308	14,506	7,549
	88.339%	80.019%	15.053%	4.928%	24.888%	49.402%	25.709%
District 49	28,719	24,148	3,418	1,153	7,844	13,020	7,855
	85.954%	84.084%	11.902%	4.015%	27.313%	45.336%	27.351%
District 50	27,252	16,884	9,159	1,209	10,877	8,938	7,437
	82.609%	61.955%	33.609%	4.436%	39.913%	32.798%	27.290%
District 51	25,266	18,317	5,436	1,513	8,200	9,307	7,759
	72.708%	72.497%	21.515%	5.988%	32.455%	36.836%	30.709%
District 52	25,613	20,704	3,201	1,708	6,110	12,334	7,169
	78.387%	80.834%	12.498%	6.668%	23.855%	48.155%	27.990%
District 53	23,541	16,159	5,053	2,329	7,880	8,330	7,331
	72.716%	68.642%	21.465%	9.893%	33.474%	35.385%	31.141%
District 54	25,429	23,342	570	1,517	7,731	10,567	7,131
	77.726%	91.793%	2.242%	5.966%	30.402%	41.555%	28.043%
District 55	27,866	21,350	5,635	881	9,872	10,615	7,379
	79.795%	76.617%	20.222%	3.162%	35.427%	38.093%	26.480%
District 56	31,183	23,097	6,351	1,735	10,248	12,378	8,557
	89.573%	74.069%	20.367%	5.564%	32.864%	39.695%	27.441%
District 57	28,206	9,731	16,950	1,525	16,758	4,819	6,629
	86.788%	34.500%	60.094%	5.407%	59.413%	17.085%	23.502%
District 58	29,173	10,506	17,704	963	18,675	4,691	5,807
	89.160%	36.013%	60.686%	3.301%	64.015%	16.080%	19.905%
District 59	28,364	21,245	5,150	1,969	7,429	12,962	7,973
	87.368%	74.901%	18.157%	6.942%	26.192%	45.699%	28.110%
District 60	31,940	17,394	13,979	567	18,518	7,298	6,124
	86.570%	54.458%	43.766%	1.775%	57.977%	22.849%	19.173%
District 61	26,716	5,247	20,396	1,073	18,235	2,115	6,366
	77.395%	19.640%	76.344%	4.016%	68.255%	7.917%	23.828%
District 62	29,693	11,795	16,923	975	16,668	6,609	6,416
	87.263%	39.723%	56.993%	3.284%	56.134%	22.258%	21.608%
District 63	30,182	8,173	21,112	897	18,667	4,944	6,571
	86.990%	27.079%	69.949%	2.972%	61.848%	16.381%	21.771%
District 64	28,869	26,067	1,841	961	5,327	15,545	7,997
	86.517%	90.294%	6.377%	3.329%	18.452%	53.847%	27.701%
District 65	27,193	20,377	5,491	1,325	8,104	12,446	6,643
	82.556%	74.935%	20.193%	4.873%	29.802%	45.769%	24.429%
District 66	29,855	23,117	4,558	2,180	7,414	14,519	7,922
	87.760%	77.431%	15.267%	7.302%	24.833%	48.632%	26.535%
District 67	21,109	6,304	13,366	1,439	12,483	2,810	5,816
	60.066%	29.864%	63.319%	6.817%	59.136%	13.312%	27.552%
District 68	27,493	20,301	5,410	1,782	9,478	10,416	7,599
	73.235%	73.841%	19.678%	6.482%	34.474%	37.886%	27.640%
District 69	28,973	20,948	5,782	2,243	9,260	11,547	8,166
	78.999%	72.302%	19.957%	7.742%	31.961%	39.854%	28.185%
District 70	27,729	19,815	5,496	2,418	9,326	10,327	8,076
	73.624%	71.459%	19.820%	8.720%	33.633%	37.243%	29.125%

Voter Registration

Plan: 221ES-1 (Schexnayder) Original

	Reg Total Dec 2021	Reg White Dec 2021	Reg Black Dec 2021	Reg Other Dec 2021	Reg Dem Total Dec 2021	Reg Rep Total Dec 2021	Reg Other Total Dec 2021
District 71	24,401	20,931	2,403	1,067	5,160	12,113	7,128
	76.172%	85.779%	9.848%	4.373%	21.147%	49.641%	29.212%
District 72	27,722	11,823	15,236	663	15,636	6,003	6,083
	85.501%	42.648%	54.960%	2.392%	56.403%	21.654%	21.943%
District 73	28,667	23,696	3,822	1,149	7,190	12,987	8,490
	81.106%	82.660%	13.332%	4.008%	25.081%	45.303%	29.616%
District 74	32,031	28,558	1,935	1,538	6,744	15,802	9,485
	91.998%	89.157%	6.041%	4.802%	21.055%	49.333%	29.612%
District 75	27,587	18,835	8,102	650	11,445	9,545	6,597
	78.931%	68.275%	29.369%	2.356%	41.487%	34.600%	23.913%
District 76	27,629	18,515	6,870	2,244	8,656	10,465	8,508
	84.874%	67.013%	24.865%	8.122%	31.329%	37.877%	30.794%
District 77	28,968	25,271	1,950	1,747	5,147	15,644	8,177
	90.322%	87.238%	6.732%	6.031%	17.768%	54.004%	28.228%
District 78	28,535	24,047	1,611	2,877	7,337	12,602	8,596
	79.901%	84.272%	5.646%	10.082%	25.712%	44.163%	30.124%
District 79	28,657	20,690	2,642	5,325	7,666	12,661	8,330
	79.985%	72.199%	9.219%	18.582%	26.751%	44.181%	29.068%
District 80	26,059	20,466	2,719	2,874	7,772	10,561	7,726
	69.630%	78.537%	10.434%	11.029%	29.825%	40.527%	29.648%
District 81	29,048	23,077	5,016	955	9,641	11,915	7,492
	85.418%	79.444%	17.268%	3.288%	33.190%	41.018%	25.792%
District 82	30,559	25,178	2,789	2,592	8,794	12,602	9,163
	80.178%	82.391%	9.127%	8.482%	28.777%	41.238%	29.985%
District 83	27,728	9,200	16,022	2,506	15,631	3,894	8,203
	83.702%	33.179%	57.783%	9.038%	56.373%	14.044%	29.584%
District 84	27,184	18,452	5,527	3,205	9,732	8,736	8,716
	81.899%	67.878%	20.332%	11.790%	35.800%	32.137%	32.063%
District 85	22,377	11,096	7,895	3,386	9,857	5,482	7,038
	67.354%	49.587%	35.282%	15.132%	44.050%	24.498%	31.452%
District 86	23,740	18,537	4,256	947	7,370	9,416	6,954
	66.789%	78.083%	17.928%	3.989%	31.045%	39.663%	29.292%
District 87	25,405	5,674	16,190	3,541	15,317	3,000	7,088
	73.843%	22.334%	63.728%	13.938%	60.291%	11.809%	27.900%
District 88	26,979	23,422	2,304	1,253	6,925	11,869	8,185
	86.799%	86.816%	8.540%	4.644%	25.668%	43.993%	30.338%
District 89	32,496	29,429	882	2,185	4,931	18,211	9,354
	93.957%	90.562%	2.714%	6.724%	15.174%	56.041%	28.785%
District 90	28,008	20,315	5,649	2,044	7,952	11,251	8,805
	83.083%	72.533%	20.169%	7.298%	28.392%	40.171%	31.437%
District 91	30,330	14,337	13,238	2,755	18,767	2,979	8,584
	85.794%	47.270%	43.647%	9.083%	61.876%	9.822%	28.302%
District 92	25,717	12,307	8,990	4,420	11,265	6,636	7,816
	74.085%	47.856%	34.957%	17.187%	43.804%	25.804%	30.392%
District 93	31,018	10,496	17,984	2,538	20,547	2,080	8,391
	83.939%	33.838%	57.979%	8.182%	66.242%	6.706%	27.052%
District 94	29,062	24,213	1,842	3,007	8,754	11,358	8,950
	81.211%	83.315%	6.338%	10.347%	30.122%	39.082%	30.796%
District 95	25,276	21,730	2,785	761	6,909	11,028	7,339
	78.276%	85.971%	11.018%	3.011%	27.334%	43.630%	29.035%
District 96	27,903	11,538	15,531	834	15,060	6,054	6,789
	83.672%	41.350%	55.661%	2.989%	53.973%	21.697%	24.331%
District 97	31,954	6,067	23,765	2,122	23,540	1,535	6,879
	87.087%	18.987%	74.373%	6.641%	73.668%	4.804%	21.528%
District 98	30,537	21,891	5,257	3,389	16,310	5,124	9,103
	81.781%	71.687%	17.215%	11.098%	53.411%	16.780%	29.810%
District 99	28,726	5,001	22,082	1,643	21,600	773	6,353
	84.583%	17.409%	76.871%	5.720%	75.193%	2.691%	22.116%
District 100	27,337	1,079	22,823	3,435	20,129	1,375	5,833
	83.513%	3.947%	83.488%	12.565%	73.633%	5.030%	21.337%
District 101	24,888	6,981	15,889	2,018	14,909	3,867	6,112
	73.944%	28.050%	63.842%	8.108%	59.904%	15.538%	24.558%
District 102	29,019	7,217	19,230	2,572	18,980	2,949	7,090
	84.448%	24.870%	66.267%	8.863%	65.405%	10.162%	24.432%
District 103	25,653	18,233	5,497	1,923	10,335	6,620	8,698
	80.733%	71.076%	21.428%	7.496%	40.288%	25.806%	33.906%
District 104	29,647	23,636	3,856	2,155	7,158	13,097	9,392
	85.961%	79.725%	13.006%	7.269%	24.144%	44.176%	31.679%
District 105	25,363	12,764	9,350	3,249	11,408	6,945	7,010
	77.582%	50.325%	36.865%	12.810%	44.979%	27.382%	27.639%
Grand Total	2,894,346	1,827,989	902,748	163,609	1,161,004	968,780	764,562

Splits

Plan: 221ES-1 (Schexnayder) Original

	Total Population	Total White	Total Black	Total Asian	Total American Indian	Total Other	VAP Total	VAP White	VAP Black	VAP Asian	VAP American Indian	VAP Other	Reg Total Dec 2021	Reg White Dec 2021	Reg Black Dec 2021	Reg Other Dec 2021
District 1																
*Caddo	45,851	30,548	11,812	368	1,293	1,830	35,627	24,569	8,625	270	956	1,207	29,636	21,167	7,286	1,183
District 1	45,851	30,548	11,812	368	1,293	1,830	35,627	24,569	8,625	270	956	1,207	29,636	21,167	7,286	1,183
	100.000%	66.625%	25.762%	0.803%	2.820%	3.991%	100.000%	68.962%	24.209%	0.758%	2.683%	3.388%	83.184%	71.423%	24.585%	3.992%
District 2																
*Bossier	10,421	3,137	5,772	221	192	1,099	7,653	2,678	3,874	193	161	747	4,101	1,612	2,180	309
*Caddo	35,221	7,181	26,223	404	387	1,026	27,471	6,291	19,793	343	324	720	20,600	4,422	15,226	952
District 2	45,642	10,318	31,995	625	579	2,125	35,124	8,969	23,667	536	485	1,467	24,701	6,034	17,406	1,261
	100.000%	22.606%	70.100%	1.369%	1.269%	4.656%	100.000%	25.535%	67.381%	1.526%	1.381%	4.177%	70.325%	24.428%	70.467%	5.105%
District 3																
*Caddo	46,122	8,906	35,439	379	394	1,004	33,920	7,615	25,055	275	325	650	27,955	5,919	21,036	1,000
District 3	46,122	8,906	35,439	379	394	1,004	33,920	7,615	25,055	275	325	650	27,955	5,919	21,036	1,000
	100.000%	19.310%	76.838%	0.822%	0.854%	2.177%	100.000%	22.450%	73.865%	0.811%	0.958%	1.916%	82.415%	21.173%	75.250%	3.577%
District 4																
*Caddo	46,405	9,648	34,937	313	434	1,073	34,714	8,356	25,017	259	312	770	29,554	6,655	21,784	1,115
District 4	46,405	9,648	34,937	313	434	1,073	34,714	8,356	25,017	259	312	770	29,554	6,655	21,784	1,115
	100.000%	20.791%	75.287%	0.674%	0.935%	2.312%	100.000%	24.071%	72.066%	0.746%	0.899%	2.218%	85.136%	22.518%	73.709%	3.773%
District 5																
*Bossier	22,429	15,068	4,766	712	650	1,233	17,317	12,113	3,322	538	512	832	12,490	9,469	2,170	851
*Caddo	15,326	11,811	1,770	877	267	601	11,570	9,087	1,232	617	204	430	10,808	8,960	1,081	767
Red River	7,620	4,195	3,106	25	171	123	5,714	3,338	2,164	3	116	93	5,631	3,130	2,418	83
District 5	45,375	31,074	9,642	1,614	1,088	1,957	34,601	24,538	6,718	1,158	832	1,355	28,929	21,559	5,669	1,701
	100.000%	68.483%	21.250%	3.557%	2.398%	4.313%	100.000%	70.917%	19.416%	3.347%	2.405%	3.916%	83.607%	74.524%	19.596%	5.880%
District 6																
*Caddo	44,174	31,976	8,095	1,657	896	1,550	35,273	26,363	5,824	1,221	706	1,159	29,716	23,749	4,153	1,814
District 6	44,174	31,976	8,095	1,657	896	1,550	35,273	26,363	5,824	1,221	706	1,159	29,716	23,749	4,153	1,814
	100.000%	72.386%	18.325%	3.751%	2.028%	3.509%	100.000%	74.740%	16.511%	3.462%	2.002%	3.286%	84.246%	79.920%	13.976%	6.104%
District 7																
*Caddo	4,749	3,387	1,028	36	169	129	3,832	2,778	813	23	131	87	3,027	2,241	683	103
De Soto	26,812	15,284	9,973	117	740	698	20,440	11,909	7,425	86	557	463	18,713	11,330	6,810	573
*Sabine	10,808	6,807	1,486	39	2,234	242	8,205	5,419	959	25	1,634	168	7,261	5,386	867	1,008
District 7	42,369	25,478	12,487	192	3,143	1,069	32,477	20,106	9,197	134	2,322	718	29,001	18,957	8,360	1,684
	100.000%	60.134%	29.472%	0.453%	7.418%	2.523%	100.000%	61.908%	28.319%	0.413%	7.150%	2.211%	89.297%	65.367%	28.827%	5.807%
District 8																
*Bossier	45,325	30,583	9,812	1,620	976	2,334	33,068	23,134	6,571	1,060	725	1,578	25,714	19,762	4,474	1,478
District 8	45,325	30,583	9,812	1,620	976	2,334	33,068	23,134	6,571	1,060	725	1,578	25,714	19,762	4,474	1,478
	100.000%	67.475%	21.648%	3.574%	2.153%	5.149%	100.000%	69.959%	19.871%	3.206%	2.192%	4.772%	77.761%	76.853%	17.399%	5.748%
District 9																

Splits

Plan: 221ES-1 (Schexnayder) Original

	Total Population	Total White	Total Black	Total Asian	Total American Indian	Total Other	VAP Total	VAP White	VAP Black	VAP Asian	VAP American Indian	VAP Other	Reg Total Dec 2021	Reg White Dec 2021	Reg Black Dec 2021	Reg Other Dec 2021
*Bossier	43,401	27,697	9,904	907	1,308	3,585	31,974	21,288	6,742	645	967	2,332	23,297	17,153	4,856	1,288
District 9	43,401	27,697	9,904	907	1,308	3,585	31,974	21,288	6,742	645	967	2,332	23,297	17,153	4,856	1,288
	100.000%	63.817%	22.820%	2.090%	3.014%	8.260%	100.000%	66.579%	21.086%	2.017%	3.024%	7.293%	72.862%	73.628%	20.844%	5.529%
District 10																
*Bossier	7,170	4,567	2,297	32	147	127	5,864	3,718	1,931	12	112	91	4,141	2,865	1,158	118
Webster	36,967	22,735	12,679	208	687	658	28,753	18,144	9,464	154	558	433	22,737	14,938	7,339	460
District 10	44,137	27,302	14,976	240	834	785	34,617	21,862	11,395	166	670	524	26,878	17,803	8,497	578
	100.000%	61.857%	33.931%	0.544%	1.890%	1.779%	100.000%	63.154%	32.917%	0.480%	1.935%	1.514%	77.644%	66.236%	31.613%	2.150%
District 11																
*Bienville	4,674	1,350	3,204	10	37	73	3,745	1,183	2,479	5	32	46	3,327	1,026	2,270	31
Claiborne	14,170	7,263	6,360	88	185	274	11,507	6,258	4,824	55	140	230	8,598	4,632	3,820	146
*Lincoln	23,614	7,120	15,398	358	240	498	19,187	6,199	12,121	325	197	345	10,285	2,854	7,007	424
District 11	42,458	15,733	24,962	456	462	845	34,439	13,640	19,424	385	369	621	22,210	8,512	13,097	601
	100.000%	37.055%	58.792%	1.074%	1.088%	1.990%	100.000%	39.606%	56.401%	1.118%	1.071%	1.803%	64.491%	38.325%	58.969%	2.706%
District 12																
*Lincoln	24,782	18,914	3,966	534	422	946	19,468	15,107	2,998	419	329	615	15,364	12,818	2,009	537
Union	21,107	14,460	5,224	62	338	1,023	16,632	11,807	3,861	39	254	671	15,221	11,066	3,692	463
District 12	45,889	33,374	9,190	596	760	1,969	36,100	26,914	6,859	458	583	1,286	30,585	23,884	5,701	1,000
	100.000%	72.728%	20.027%	1.299%	1.656%	4.291%	100.000%	74.554%	19.000%	1.269%	1.615%	3.562%	84.723%	78.091%	18.640%	3.270%
District 13																
*Bienville	8,307	5,600	2,396	47	170	94	6,328	4,303	1,805	25	130	65	5,520	3,817	1,647	56
Jackson	15,031	9,967	4,166	175	255	468	11,783	7,967	3,125	140	174	377	9,449	6,647	2,610	192
*Natchitoches	7,094	4,214	2,407	36	223	214	5,500	3,431	1,704	36	182	147	4,512	2,934	1,434	144
Winn	13,755	8,594	3,727	210	263	961	10,906	6,932	2,695	170	207	902	8,406	5,988	2,292	126
District 13	44,187	28,375	12,696	468	911	1,737	34,517	22,633	9,329	371	693	1,491	27,887	19,386	7,983	518
	100.000%	64.216%	28.732%	1.059%	2.062%	3.931%	100.000%	65.571%	27.027%	1.075%	2.008%	4.320%	80.792%	69.516%	28.626%	1.857%
District 14																
*Ouachita	44,279	30,426	10,838	1,176	734	1,105	33,794	24,052	7,507	855	602	778	28,565	22,037	5,335	1,193
District 14	44,279	30,426	10,838	1,176	734	1,105	33,794	24,052	7,507	855	602	778	28,565	22,037	5,335	1,193
	100.000%	68.714%	24.477%	2.656%	1.658%	2.496%	100.000%	71.172%	22.214%	2.530%	1.781%	2.302%	84.527%	77.147%	18.677%	4.176%
District 15																
*Ouachita	43,934	37,583	3,086	663	1,158	1,444	32,900	28,508	2,042	448	882	1,020	28,610	26,188	1,512	910
District 15	43,934	37,583	3,086	663	1,158	1,444	32,900	28,508	2,042	448	882	1,020	28,610	26,188	1,512	910
	100.000%	85.544%	7.024%	1.509%	2.636%	3.287%	100.000%	86.650%	6.207%	1.362%	2.681%	3.100%	86.960%	91.534%	5.285%	3.181%
District 16																
*Morehouse	16,452	5,552	10,425	100	176	199	12,758	4,632	7,751	75	145	155	10,376	3,487	6,722	167
*Ouachita	25,876	7,103	17,549	507	247	470	19,364	6,111	12,325	439	170	319	15,430	4,336	10,506	588

Splits

Plan: 221ES-1 (Schexnayder) Original

	Total Population	Total White	Total Black	Total Asian	Total American Indian	Total Other	VAP Total	VAP White	VAP Black	VAP Asian	VAP American Indian	VAP Other	Reg Total Dec 2021	Reg White Dec 2021	Reg Black Dec 2021	Reg Other Dec 2021
District 22																
Grant	22,169	17,709	3,335	133	644	348	17,527	13,964	2,717	97	507	242	12,688	11,174	1,176	338
*La Salle	5,845	3,971	281	245	127	1,221	4,788	2,992	254	243	90	1,209	2,881	2,788	34	59
*Natchitoches	14,916	6,411	7,547	143	219	596	11,918	5,621	5,513	115	178	491	8,088	3,727	3,942	419
District 22	42,930	28,091	11,163	521	990	2,165	34,233	22,577	8,484	455	775	1,942	23,657	17,689	5,152	816
	100.000%	65.434%	26.003%	1.214%	2.306%	5.043%	100.000%	65.951%	24.783%	1.329%	2.264%	5.673%	69.106%	74.773%	21.778%	3.449%
District 23																
*Orleans	42,708	14,694	22,423	834	521	4,236	35,751	13,246	18,183	721	436	3,165	26,881	10,175	14,275	2,431
District 23	42,708	14,694	22,423	834	521	4,236	35,751	13,246	18,183	721	436	3,165	26,881	10,175	14,275	2,431
	100.000%	34.406%	52.503%	1.953%	1.220%	9.919%	100.000%	37.051%	50.860%	2.017%	1.220%	8.853%	75.190%	37.852%	53.104%	9.044%
District 24																
*Beauregard	11,776	10,560	538	82	383	213	8,737	7,886	339	69	289	154	7,625	6,991	272	362
*Sabine	11,347	8,229	2,375	55	489	199	8,859	6,635	1,696	41	336	151	7,286	5,637	1,317	332
*Vernon	19,525	16,726	1,017	292	721	769	15,065	13,055	703	228	538	541	12,237	11,271	321	645
District 24	42,648	35,515	3,930	429	1,593	1,181	32,661	27,576	2,738	338	1,163	846	27,148	23,899	1,910	1,339
	100.000%	83.275%	9.215%	1.006%	3.735%	2.769%	100.000%	84.431%	8.383%	1.035%	3.561%	2.590%	83.121%	88.032%	7.036%	4.932%
District 25																
*Natchitoches	15,505	8,736	5,771	76	419	503	11,931	6,958	4,198	47	323	405	10,507	6,189	3,848	470
*Rapides	27,631	19,991	5,160	948	700	832	21,531	16,068	3,676	692	521	574	18,306	14,346	2,968	992
District 25	43,136	28,727	10,931	1,024	1,119	1,335	33,462	23,026	7,874	739	844	979	28,813	20,535	6,816	1,462
	100.000%	66.596%	25.341%	2.374%	2.594%	3.095%	100.000%	68.812%	23.531%	2.208%	2.522%	2.926%	86.107%	71.270%	23.656%	5.074%
District 26																
*Rapides	44,636	12,064	30,302	635	492	1,143	33,616	10,205	21,624	495	376	916	25,898	7,612	17,204	1,082
District 26	44,636	12,064	30,302	635	492	1,143	33,616	10,205	21,624	495	376	916	25,898	7,612	17,204	1,082
	100.000%	27.028%	67.887%	1.423%	1.102%	2.561%	100.000%	30.358%	64.327%	1.473%	1.119%	2.725%	77.041%	29.392%	66.430%	4.178%
District 27																
*Rapides	44,225	35,391	5,449	669	1,420	1,296	33,378	27,284	3,656	473	1,068	897	27,359	23,852	2,442	1,065
District 27	44,225	35,391	5,449	669	1,420	1,296	33,378	27,284	3,656	473	1,068	897	27,359	23,852	2,442	1,065
	100.000%	80.025%	12.321%	1.513%	3.211%	2.930%	100.000%	81.742%	10.953%	1.417%	3.200%	2.687%	81.967%	87.182%	8.926%	3.893%
District 28																
Avoyelles	39,693	25,625	11,678	434	767	1,189	30,578	20,269	8,311	379	570	1,049	23,426	16,534	6,294	598
*St. Landry	3,158	2,342	715	18	19	64	2,414	1,810	538	11	11	44	2,085	1,635	412	38
District 28	42,851	27,967	12,393	452	786	1,253	32,992	22,079	8,849	390	581	1,093	25,511	18,169	6,706	636
	100.000%	65.266%	28.921%	1.055%	1.834%	2.924%	100.000%	66.922%	26.822%	1.182%	1.761%	3.313%	77.325%	71.220%	26.287%	2.493%
District 29																
*East Baton Rouge	23,200	702	22,231	48	49	170	16,923	619	16,109	32	41	122	15,331	455	14,481	395
*West Baton Rouge	20,594	9,923	9,270	250	228	923	15,551	7,785	6,764	187	154	661	13,013	6,937	5,807	269

Splits

Plan: 221ES-1 (Schexnayder) Original

	Total Population	Total White	Total Black	Total Asian	Total American Indian	Total Other	VAP Total	VAP White	VAP Black	VAP Asian	VAP American Indian	VAP Other	Reg Total Dec 2021	Reg White Dec 2021	Reg Black Dec 2021	Reg Other Dec 2021
District 29	43,794	10,625	31,501	298	277	1,093	32,474	8,404	22,873	219	195	783	28,344	7,392	20,288	664
	100.000%	24.261%	71.930%	0.680%	0.633%	2.496%	100.000%	25.879%	70.435%	0.674%	0.600%	2.411%	87.282%	26.080%	71.578%	2.343%
District 30																
*Beauregard	13,539	8,890	3,474	272	394	509	10,405	6,987	2,591	169	308	350	7,846	5,234	2,023	589
*Vernon	29,225	18,361	6,594	1,150	879	2,241	21,196	13,710	4,430	846	622	1,588	11,823	7,911	2,690	1,222
District 30	42,764	27,251	10,068	1,422	1,273	2,750	31,601	20,697	7,021	1,015	930	1,938	19,669	13,145	4,713	1,811
	100.000%	63.724%	23.543%	3.325%	2.977%	6.431%	100.000%	65.495%	22.218%	3.212%	2.943%	6.133%	62.242%	66.831%	23.962%	9.207%
District 31																
*Lafayette	30,391	22,441	4,063	1,623	406	1,858	22,601	17,092	2,755	1,166	321	1,267	19,171	15,935	1,925	1,311
*Vermilion	16,119	9,963	4,713	647	165	631	11,943	7,802	3,116	457	127	441	9,954	6,768	2,726	460
District 31	46,510	32,404	8,776	2,270	571	2,489	34,544	24,894	5,871	1,623	448	1,708	29,125	22,703	4,651	1,771
	100.000%	69.671%	18.869%	4.881%	1.228%	5.352%	100.000%	72.065%	16.996%	4.698%	1.297%	4.944%	84.313%	77.950%	15.969%	6.081%
District 32																
Allen	22,750	16,327	4,490	246	947	740	17,510	12,751	3,275	182	646	656	12,201	9,478	2,217	506
*Beauregard	6,517	5,704	513	35	172	93	4,950	4,252	487	28	111	72	3,826	3,674	30	122
*Calcasieu	13,148	11,297	1,219	65	340	227	9,960	8,631	889	41	239	160	7,909	7,045	651	213
District 32	42,415	33,328	6,222	346	1,459	1,060	32,420	25,634	4,651	251	996	888	23,936	20,197	2,898	841
	100.000%	78.576%	14.669%	0.816%	3.440%	2.499%	100.000%	79.068%	14.346%	0.774%	3.072%	2.739%	73.831%	84.379%	12.107%	3.514%
District 33																
*Calcasieu	44,243	36,566	3,976	667	916	2,118	32,848	27,777	2,540	480	641	1,410	25,303	22,539	1,755	1,009
District 33	44,243	36,566	3,976	667	916	2,118	32,848	27,777	2,540	480	641	1,410	25,303	22,539	1,755	1,009
	100.000%	82.648%	8.987%	1.508%	2.070%	4.787%	100.000%	84.562%	7.733%	1.461%	1.951%	4.292%	77.031%	89.076%	6.936%	3.988%
District 34																
*Calcasieu	45,879	8,998	34,381	506	364	1,630	34,506	7,684	25,041	365	273	1,143	24,763	4,669	19,017	1,077
District 34	45,879	8,998	34,381	506	364	1,630	34,506	7,684	25,041	365	273	1,143	24,763	4,669	19,017	1,077
	100.000%	19.612%	74.938%	1.103%	0.793%	3.553%	100.000%	22.269%	72.570%	1.058%	0.791%	3.312%	71.764%	18.855%	76.796%	4.349%
District 35																
*Beauregard	4,717	4,375	124	13	103	102	3,397	3,179	78	3	65	72	2,997	2,872	44	81
*Calcasieu	41,371	32,237	6,116	594	731	1,693	31,101	24,788	4,221	393	532	1,167	24,372	20,567	2,768	1,037
District 35	46,088	36,612	6,240	607	834	1,795	34,498	27,967	4,299	396	597	1,239	27,369	23,439	2,812	1,118
	100.000%	79.439%	13.539%	1.317%	1.810%	3.895%	100.000%	81.068%	12.462%	1.148%	1.731%	3.592%	79.335%	85.641%	10.274%	4.085%
District 36																
*Calcasieu	45,062	31,758	7,550	2,384	738	2,632	35,106	25,587	5,269	1,742	589	1,919	24,206	20,005	2,718	1,483
District 36	45,062	31,758	7,550	2,384	738	2,632	35,106	25,587	5,269	1,742	589	1,919	24,206	20,005	2,718	1,483
	100.000%	70.476%	16.755%	5.290%	1.638%	5.841%	100.000%	72.885%	15.009%	4.962%	1.678%	5.466%	68.951%	82.645%	11.229%	6.127%
District 37																
*Calcasieu	12,896	9,306	2,864	96	229	401	9,354	6,994	1,869	61	172	258	6,894	5,333	1,342	219

Splits

Plan: 221ES-1 (Schexnayder) Original

	Total Population	Total White	Total Black	Total Asian	Total American Indian	Total Other	VAP Total	VAP White	VAP Black	VAP Asian	VAP American Indian	VAP Other	Reg Total Dec 2021	Reg White Dec 2021	Reg Black Dec 2021	Reg Other Dec 2021
District 37																
Jefferson Davis	32,250	25,066	5,837	183	472	692	24,039	19,121	4,006	111	325	476	20,013	16,350	3,202	461
District 37	45,146	34,372	8,701	279	701	1,093	33,393	26,115	5,875	172	497	734	26,907	21,683	4,544	680
	100.000%	76.135%	19.273%	0.618%	1.553%	2.421%	100.000%	78.205%	17.594%	0.515%	1.488%	2.198%	80.577%	80.585%	16.888%	2.527%
District 38																
*Evangeline	28,778	18,730	8,762	179	244	863	21,600	14,444	6,120	138	190	708	18,639	12,943	5,400	296
*Rapides	13,531	10,064	1,681	176	490	1,120	10,267	7,816	1,249	126	369	707	8,613	7,022	1,161	430
District 38	42,309	28,794	10,443	355	734	1,983	31,867	22,260	7,369	264	559	1,415	27,252	19,965	6,561	726
	100.000%	68.056%	24.683%	0.839%	1.735%	4.687%	100.000%	69.853%	23.124%	0.828%	1.754%	4.440%	85.518%	73.261%	24.075%	2.664%
District 39																
*Lafayette	45,041	26,687	13,950	553	565	3,286	33,129	20,966	9,271	374	395	2,123	27,179	18,506	7,431	1,242
District 39	45,041	26,687	13,950	553	565	3,286	33,129	20,966	9,271	374	395	2,123	27,179	18,506	7,431	1,242
	100.000%	59.250%	30.972%	1.228%	1.254%	7.296%	100.000%	63.286%	27.985%	1.129%	1.192%	6.408%	82.040%	68.089%	27.341%	4.570%
District 40																
*St. Landry	45,296	17,937	25,916	272	296	875	34,012	14,431	18,563	200	207	611	31,126	13,283	17,048	795
District 40	45,296	17,937	25,916	272	296	875	34,012	14,431	18,563	200	207	611	31,126	13,283	17,048	795
	100.000%	39.600%	57.215%	0.600%	0.653%	1.932%	100.000%	42.429%	54.578%	0.588%	0.609%	1.796%	91.515%	42.675%	54.771%	2.554%
District 41																
*Acadia	20,104	16,399	2,794	68	215	628	14,680	12,209	1,850	47	158	416	13,190	11,316	1,590	284
*Evangeline	3,572	2,624	473	62	36	377	2,808	2,016	363	49	27	353	1,914	1,623	243	48
*St. Landry	21,068	13,425	6,455	156	210	822	15,580	10,360	4,437	103	164	516	12,443	8,443	3,646	354
District 41	44,744	32,448	9,722	286	461	1,827	33,068	24,585	6,650	199	349	1,285	27,547	21,382	5,479	686
	100.000%	72.519%	21.728%	0.639%	1.030%	4.083%	100.000%	74.347%	20.110%	0.602%	1.055%	3.886%	83.304%	77.620%	19.890%	2.490%
District 42																
*Acadia	37,472	28,081	8,070	170	358	793	28,263	21,862	5,533	126	242	500	24,488	19,239	4,817	432
*Lafayette	8,190	6,147	1,305	76	144	518	5,931	4,592	864	43	105	327	4,896	4,021	696	179
District 42	45,662	34,228	9,375	246	502	1,311	34,194	26,454	6,397	169	347	827	29,384	23,260	5,513	611
	100.000%	74.959%	20.531%	0.539%	1.099%	2.871%	100.000%	77.364%	18.708%	0.494%	1.015%	2.419%	85.933%	79.159%	18.762%	2.079%
District 43																
*Lafayette	42,630	31,321	6,896	1,418	651	2,344	33,443	25,379	4,841	1,007	547	1,669	27,924	23,016	3,196	1,712
District 43	42,630	31,321	6,896	1,418	651	2,344	33,443	25,379	4,841	1,007	547	1,669	27,924	23,016	3,196	1,712
	100.000%	73.472%	16.176%	3.326%	1.527%	5.498%	100.000%	75.887%	14.475%	3.011%	1.636%	4.991%	83.497%	82.424%	11.445%	6.131%
District 44																
*Lafayette	42,580	11,996	28,553	376	330	1,325	32,915	10,435	21,080	280	228	892	27,179	7,843	18,188	1,148
District 44	42,580	11,996	28,553	376	330	1,325	32,915	10,435	21,080	280	228	892	27,179	7,843	18,188	1,148
	100.000%	28.173%	67.057%	0.883%	0.775%	3.112%	100.000%	31.703%	64.044%	0.851%	0.693%	2.710%	82.573%	28.857%	66.919%	4.224%
District 45																

Splits

Plan: 221ES-1 (Schexnayder) Original

	Total Population	Total White	Total Black	Total Asian	Total American Indian	Total Other	VAP Total	VAP White	VAP Black	VAP Asian	VAP American Indian	VAP Other	Reg Total Dec 2021	Reg White Dec 2021	Reg Black Dec 2021	Reg Other Dec 2021
District 45																
*Lafayette	43,866	31,794	7,010	1,510	668	2,884	35,458	26,634	4,981	1,235	498	2,110	29,111	23,984	3,333	1,794
District 45	43,866	31,794	7,010	1,510	668	2,884	35,458	26,634	4,981	1,235	498	2,110	29,111	23,984	3,333	1,794
	100.000%	72.480%	15.980%	3.442%	1.523%	6.575%	100.000%	75.114%	14.048%	3.483%	1.404%	5.951%	82.100%	82.388%	11.449%	6.163%
District 46																
*St. Landry	13,018	9,907	2,750	53	111	197	9,805	7,608	1,959	39	69	130	8,828	6,732	1,899	197
*St. Martin	30,578	21,592	7,372	337	352	925	23,052	16,925	4,995	225	263	644	20,455	15,567	4,361	527
District 46	43,596	31,499	10,122	390	463	1,122	32,857	24,533	6,954	264	332	774	29,283	22,299	6,260	724
	100.000%	72.252%	23.218%	0.895%	1.062%	2.574%	100.000%	74.666%	21.164%	0.803%	1.010%	2.356%	89.123%	76.150%	21.378%	2.472%
District 47																
*Calcasieu	14,186	9,610	3,280	390	218	688	10,291	7,328	2,069	277	158	459	7,064	5,501	1,262	301
Cameron	5,617	5,232	125	30	75	155	4,358	4,100	79	23	47	109	4,789	4,610	88	91
*Vermilion	25,664	22,253	1,935	491	252	733	19,457	17,155	1,263	354	208	477	17,061	15,570	982	509
District 47	45,467	37,095	5,340	911	545	1,576	34,106	28,583	3,411	654	413	1,045	28,914	25,681	2,332	901
	100.000%	81.587%	11.745%	2.004%	1.199%	3.466%	100.000%	83.806%	10.001%	1.918%	1.211%	3.064%	84.777%	88.819%	8.065%	3.116%
District 48																
*Iberia	25,996	18,463	5,108	901	351	1,173	19,892	14,579	3,528	658	273	854	17,697	14,017	2,863	817
*Lafayette	14,957	11,412	2,051	533	233	728	10,500	8,271	1,272	329	148	480	9,205	7,655	1,005	545
*St. Martin	3,748	2,564	916	108	24	136	2,847	1,995	660	65	22	105	2,461	1,824	552	85
District 48	44,701	32,439	8,075	1,542	608	2,037	33,239	24,845	5,460	1,052	443	1,439	29,363	23,496	4,420	1,447
	100.000%	72.569%	18.064%	3.450%	1.360%	4.557%	100.000%	74.747%	16.426%	3.165%	1.333%	4.329%	88.339%	80.019%	15.053%	4.928%
District 49																
*Iberia	15,677	11,404	2,449	381	229	1,214	11,902	8,992	1,658	272	164	816	10,137	8,296	1,425	416
*Lafayette	14,098	11,565	1,308	365	213	647	9,898	8,239	853	230	145	431	8,828	7,685	707	436
*Vermilion	15,576	12,261	2,162	309	206	638	11,612	9,406	1,408	226	153	419	9,754	8,167	1,286	301
District 49	45,351	35,230	5,919	1,055	648	2,499	33,412	26,637	3,919	728	462	1,666	28,719	24,148	3,418	1,153
	100.000%	77.683%	13.052%	2.326%	1.429%	5.510%	100.000%	79.723%	11.729%	2.179%	1.383%	4.986%	85.954%	84.084%	11.902%	4.015%
District 50																
*St. Martin	1,368	1,285	13	7	34	29	1,154	1,091	11	5	30	17	993	979	1	13
*St. Mary	41,822	22,928	14,640	392	1,496	2,366	31,835	18,361	10,585	252	1,043	1,594	26,259	15,905	9,158	1,196
District 50	43,190	24,213	14,653	399	1,530	2,395	32,989	19,452	10,596	257	1,073	1,611	27,252	16,884	9,159	1,209
	100.000%	56.062%	33.927%	0.924%	3.542%	5.545%	100.000%	58.965%	32.120%	0.779%	3.253%	4.883%	82.609%	61.955%	33.609%	4.436%
District 51																
*Assumption	4,889	3,623	774	34	115	343	3,807	2,959	522	25	87	214	2,961	2,438	428	95
*Lafourche	10,589	7,103	2,388	115	501	482	7,801	5,482	1,588	88	322	321	5,788	4,540	963	285
*St. Mary	7,584	4,021	1,351	443	174	1,595	5,686	3,233	935	341	130	1,047	3,951	2,807	733	411
*Terrebonne	23,257	14,039	6,452	216	1,182	1,368	17,456	11,204	4,454	145	790	863	12,566	8,532	3,312	722

Splits

Plan: 221ES-1 (Schexnayder) Original

	Total Population	Total White	Total Black	Total Asian	Total American Indian	Total Other	VAP Total	VAP White	VAP Black	VAP Asian	VAP American Indian	VAP Other	Reg Total Dec 2021	Reg White Dec 2021	Reg Black Dec 2021	Reg Other Dec 2021
District 51	46,319	28,786	10,965	808	1,972	3,788	34,750	22,878	7,499	599	1,329	2,445	25,266	18,317	5,436	1,513
	100.000%	62.147%	23.673%	1.744%	4.257%	8.178%	100.000%	65.836%	21.580%	1.724%	3.824%	7.036%	72.708%	72.497%	21.515%	5.988%
District 52																
*Terrebonne	43,163	30,309	7,111	921	2,522	2,300	32,675	23,989	4,792	624	1,680	1,590	25,613	20,704	3,201	1,708
District 52	43,163	30,309	7,111	921	2,522	2,300	32,675	23,989	4,792	624	1,680	1,590	25,613	20,704	3,201	1,708
	100.000%	70.220%	16.475%	2.134%	5.843%	5.329%	100.000%	73.417%	14.666%	1.910%	5.142%	4.866%	78.387%	80.834%	12.498%	6.668%
District 53																
*Terrebonne	43,160	25,586	9,584	606	4,933	2,451	32,374	20,438	6,550	470	3,280	1,636	23,541	16,159	5,053	2,329
District 53	43,160	25,586	9,584	606	4,933	2,451	32,374	20,438	6,550	470	3,280	1,636	23,541	16,159	5,053	2,329
	100.000%	59.282%	22.206%	1.404%	11.430%	5.679%	100.000%	63.131%	20.232%	1.452%	10.132%	5.053%	72.716%	68.642%	21.465%	9.893%
District 54																
*Jefferson	1,005	939	11	8	28	19	820	769	4	4	28	15	805	765	4	36
*Lafourche	41,844	34,005	1,737	507	2,912	2,683	31,896	26,849	997	374	1,929	1,747	24,624	22,577	566	1,481
District 54	42,849	34,944	1,748	515	2,940	2,702	32,716	27,618	1,001	378	1,957	1,762	25,429	23,342	570	1,517
	100.000%	81.551%	4.079%	1.202%	6.861%	6.306%	100.000%	84.417%	3.060%	1.155%	5.982%	5.386%	77.726%	91.793%	2.242%	5.966%
District 55																
*Lafourche	45,124	30,602	11,730	403	811	1,578	34,922	24,507	8,492	276	526	1,121	27,866	21,350	5,635	881
District 55	45,124	30,602	11,730	403	811	1,578	34,922	24,507	8,492	276	526	1,121	27,866	21,350	5,635	881
	100.000%	67.818%	25.995%	0.893%	1.797%	3.497%	100.000%	70.176%	24.317%	0.790%	1.506%	3.210%	79.795%	76.617%	20.222%	3.162%
District 56																
*St. Charles	45,596	31,034	9,886	778	854	3,044	34,225	24,116	6,903	490	608	2,108	30,715	22,765	6,234	1,716
*St. John the Baptist	765	463	201	0	11	90	588	373	141	0	8	66	468	332	117	19
District 56	46,361	31,497	10,087	778	865	3,134	34,813	24,489	7,044	490	616	2,174	31,183	23,097	6,351	1,735
	100.000%	67.939%	21.758%	1.678%	1.866%	6.760%	100.000%	70.344%	20.234%	1.408%	1.769%	6.245%	89.573%	74.069%	20.367%	5.564%
District 57																
*St. Charles	6,953	2,516	4,042	59	71	265	5,316	2,038	2,987	39	59	193	4,270	1,544	2,563	163
*St. John the Baptist	35,744	11,005	21,727	389	396	2,227	27,184	9,215	15,818	314	289	1,548	23,936	8,187	14,387	1,362
District 57	42,697	13,521	25,769	448	467	2,492	32,500	11,253	18,805	353	348	1,741	28,206	9,731	16,950	1,525
	100.000%	31.667%	60.353%	1.049%	1.094%	5.836%	100.000%	34.625%	57.862%	1.086%	1.071%	5.357%	86.788%	34.500%	60.094%	5.407%
District 58																
*Ascension	28,121	9,126	16,366	216	361	2,052	20,913	7,551	11,545	167	263	1,387	17,517	6,547	10,181	789
*St. James	9,121	3,033	5,897	15	37	139	7,076	2,498	4,446	9	30	93	7,147	2,259	4,793	95
*St. John the Baptist	5,968	2,409	3,268	14	58	219	4,731	2,034	2,478	9	53	157	4,509	1,700	2,730	79
District 58	43,210	14,568	25,531	245	456	2,410	32,720	12,083	18,469	185	346	1,637	29,173	10,506	17,704	963
	100.000%	33.714%	59.086%	0.567%	1.055%	5.577%	100.000%	36.928%	56.446%	0.565%	1.057%	5.003%	89.160%	36.013%	60.686%	3.301%

Splits

Plan: 221ES-1 (Schexnayder) Original

	Total Population	Total White	Total Black	Total Asian	Total American Indian	Total Other	VAP Total	VAP White	VAP Black	VAP Asian	VAP American Indian	VAP Other	Reg Total Dec 2021	Reg White Dec 2021	Reg Black Dec 2021	Reg Other Dec 2021
District 59																
*Ascension	45,699	31,163	8,879	1,446	742	3,469	32,465	22,714	6,059	950	496	2,246	28,364	21,245	5,150	1,969
District 59	45,699	31,163	8,879	1,446	742	3,469	32,465	22,714	6,059	950	496	2,246	28,364	21,245	5,150	1,969
	100.000%	68.192%	19.429%	3.164%	1.624%	7.591%	100.000%	69.965%	18.663%	2.926%	1.528%	6.918%	87.368%	74.901%	18.157%	6.942%
District 60																
*Assumption	16,150	10,099	5,446	62	143	400	12,809	8,186	4,185	32	110	296	11,478	7,262	4,082	134
Iberville	30,241	14,833	13,730	202	274	1,202	24,086	12,462	10,232	149	221	1,022	20,462	10,132	9,897	433
District 60	46,391	24,932	19,176	264	417	1,602	36,895	20,648	14,417	181	331	1,318	31,940	17,394	13,979	567
	100.000%	53.743%	41.336%	0.569%	0.899%	3.453%	100.000%	55.964%	39.076%	0.491%	0.897%	3.572%	86.570%	54.458%	43.766%	1.775%
District 61																
*East Baton Rouge	45,314	7,224	35,518	487	300	1,785	34,519	6,456	26,166	369	243	1,285	26,716	5,247	20,396	1,073
District 61	45,314	7,224	35,518	487	300	1,785	34,519	6,456	26,166	369	243	1,285	26,716	5,247	20,396	1,073
	100.000%	15.942%	78.382%	1.075%	0.662%	3.939%	100.000%	18.703%	75.802%	1.069%	0.704%	3.723%	77.395%	19.640%	76.344%	4.016%
District 62																
*East Baton Rouge	23,706	5,219	17,574	136	186	591	17,844	4,357	12,859	103	146	379	16,093	3,836	11,737	520
East Feliciana	19,539	11,516	7,341	91	262	329	16,183	9,740	5,918	61	198	266	13,600	7,959	5,186	455
District 62	43,245	16,735	24,915	227	448	920	34,027	14,097	18,777	164	344	645	29,693	11,795	16,923	975
	100.000%	38.698%	57.614%	0.525%	1.036%	2.127%	100.000%	41.429%	55.183%	0.482%	1.011%	1.896%	87.263%	39.723%	56.993%	3.284%
District 63																
*East Baton Rouge	46,141	11,704	32,686	405	286	1,060	34,696	9,005	24,391	263	218	819	30,182	8,173	21,112	897
District 63	46,141	11,704	32,686	405	286	1,060	34,696	9,005	24,391	263	218	819	30,182	8,173	21,112	897
	100.000%	25.366%	70.839%	0.878%	0.620%	2.297%	100.000%	25.954%	70.299%	0.758%	0.628%	2.361%	86.990%	27.079%	69.949%	2.972%
District 64																
*East Baton Rouge	5,061	3,570	1,268	10	95	118	3,992	2,833	986	10	66	97	3,702	2,678	957	67
*Livingston	40,558	35,001	2,065	383	1,021	2,088	29,376	25,816	1,215	238	772	1,335	25,167	23,389	884	894
District 64	45,619	38,571	3,333	393	1,116	2,206	33,368	28,649	2,201	248	838	1,432	28,869	26,067	1,841	961
	100.000%	84.550%	7.306%	0.861%	2.446%	4.836%	100.000%	85.858%	6.596%	0.743%	2.511%	4.292%	86.517%	90.294%	6.377%	3.329%
District 65																
*East Baton Rouge	44,189	27,690	10,787	1,101	735	3,876	32,939	21,818	7,210	803	590	2,518	27,193	20,377	5,491	1,325
District 65	44,189	27,690	10,787	1,101	735	3,876	32,939	21,818	7,210	803	590	2,518	27,193	20,377	5,491	1,325
	100.000%	62.663%	24.411%	2.492%	1.663%	8.771%	100.000%	66.238%	21.889%	2.438%	1.791%	7.644%	82.556%	74.935%	20.193%	4.873%
District 66																
*East Baton Rouge	43,703	29,474	8,914	2,530	549	2,236	34,019	23,829	6,304	1,774	431	1,681	29,855	23,117	4,558	2,180
District 66	43,703	29,474	8,914	2,530	549	2,236	34,019	23,829	6,304	1,774	431	1,681	29,855	23,117	4,558	2,180
	100.000%	67.442%	20.397%	5.789%	1.256%	5.116%	100.000%	70.046%	18.531%	5.215%	1.267%	4.941%	87.760%	77.431%	15.267%	7.302%
District 67																
*East Baton Rouge	43,566	13,858	23,932	1,821	381	3,574	35,143	12,561	18,223	1,579	302	2,478	21,109	6,304	13,366	1,439

Splits

Plan: 221ES-1 (Schexnayder) Original

	Total Population	Total White	Total Black	Total Asian	Total American Indian	Total Other	VAP Total	VAP White	VAP Black	VAP Asian	VAP American Indian	VAP Other	Reg Total Dec 2021	Reg White Dec 2021	Reg Black Dec 2021	Reg Other Dec 2021
District 67	43,566	13,858	23,932	1,821	381	3,574	35,143	12,561	18,223	1,579	302	2,478	21,109	6,304	13,366	1,439
	100.000%	31.809%	54.933%	4.180%	0.875%	8.204%	100.000%	35.743%	51.854%	4.493%	0.859%	7.051%	60.066%	29.864%	63.319%	6.817%
District 68																
*East Baton Rouge	44,607	30,459	9,539	1,890	521	2,198	37,541	26,251	7,574	1,525	421	1,770	27,493	20,301	5,410	1,782
District 68	44,607	30,459	9,539	1,890	521	2,198	37,541	26,251	7,574	1,525	421	1,770	27,493	20,301	5,410	1,782
	100.000%	68.283%	21.385%	4.237%	1.168%	4.927%	100.000%	69.926%	20.175%	4.062%	1.121%	4.715%	73.235%	73.841%	19.678%	6.482%
District 69																
*East Baton Rouge	46,550	27,658	12,100	2,580	565	3,647	36,675	23,068	8,709	1,872	447	2,579	28,973	20,948	5,782	2,243
District 69	46,550	27,658	12,100	2,580	565	3,647	36,675	23,068	8,709	1,872	447	2,579	28,973	20,948	5,782	2,243
	100.000%	59.416%	25.994%	5.542%	1.214%	7.835%	100.000%	62.898%	23.746%	5.104%	1.219%	7.032%	78.999%	72.302%	19.957%	7.742%
District 70																
*East Baton Rouge	45,398	28,848	10,241	2,832	664	2,813	37,663	24,678	7,989	2,310	543	2,143	27,729	19,815	5,496	2,418
District 70	45,398	28,848	10,241	2,832	664	2,813	37,663	24,678	7,989	2,310	543	2,143	27,729	19,815	5,496	2,418
	100.000%	63.545%	22.558%	6.238%	1.463%	6.196%	100.000%	65.523%	21.212%	6.133%	1.442%	5.690%	73.624%	71.459%	19.820%	8.720%
District 71																
*Livingston	43,001	32,754	5,534	748	846	3,119	32,034	25,280	3,621	509	620	2,004	24,401	20,931	2,403	1,067
District 71	43,001	32,754	5,534	748	846	3,119	32,034	25,280	3,621	509	620	2,004	24,401	20,931	2,403	1,067
	100.000%	76.170%	12.869%	1.739%	1.967%	7.253%	100.000%	78.916%	11.304%	1.589%	1.935%	6.256%	76.172%	85.779%	9.848%	4.373%
District 72																
St. Helena	10,920	4,527	6,031	39	134	189	8,463	3,805	4,371	28	109	150	8,321	3,628	4,565	128
*Tangipahoa	31,897	12,590	17,830	192	330	955	23,960	10,226	12,706	142	242	644	19,401	8,195	10,671	535
District 72	42,817	17,117	23,861	231	464	1,144	32,423	14,031	17,077	170	351	794	27,722	11,823	15,236	663
	100.000%	39.977%	55.728%	0.540%	1.084%	2.672%	100.000%	43.275%	52.669%	0.524%	1.083%	2.449%	85.501%	42.648%	54.960%	2.392%
District 73																
*Tangipahoa	46,503	34,945	7,829	500	1,087	2,142	35,345	27,400	5,289	333	806	1,517	28,667	23,696	3,822	1,149
District 73	46,503	34,945	7,829	500	1,087	2,142	35,345	27,400	5,289	333	806	1,517	28,667	23,696	3,822	1,149
	100.000%	75.146%	16.835%	1.075%	2.337%	4.606%	100.000%	77.522%	14.964%	0.942%	2.280%	4.292%	81.106%	82.660%	13.332%	4.008%
District 74																
*St. Tammany	44,185	36,574	3,335	384	1,046	2,846	34,817	29,335	2,377	268	770	2,067	32,031	28,558	1,935	1,538
District 74	44,185	36,574	3,335	384	1,046	2,846	34,817	29,335	2,377	268	770	2,067	32,031	28,558	1,935	1,538
	100.000%	82.775%	7.548%	0.869%	2.367%	6.441%	100.000%	84.255%	6.827%	0.770%	2.212%	5.937%	91.998%	89.157%	6.041%	4.802%
District 75																
Washington	45,463	29,943	13,434	216	736	1,134	34,951	23,743	9,732	154	561	761	27,587	18,835	8,102	650
District 75	45,463	29,943	13,434	216	736	1,134	34,951	23,743	9,732	154	561	761	27,587	18,835	8,102	650
	100.000%	65.862%	29.549%	0.475%	1.619%	2.494%	100.000%	67.932%	27.845%	0.441%	1.605%	2.177%	78.931%	68.275%	29.369%	2.356%
District 76																
*St. Tammany	43,228	25,840	12,530	1,373	900	2,585	32,553	20,549	8,505	1,019	669	1,811	27,629	18,515	6,870	2,244

Splits

Plan: 221ES-1 (Schexnayder) Original

	Total Population	Total White	Total Black	Total Asian	Total American Indian	Total Other	VAP Total	VAP White	VAP Black	VAP Asian	VAP American Indian	VAP Other	Reg Total Dec 2021	Reg White Dec 2021	Reg Black Dec 2021	Reg Other Dec 2021
District 76	43,228	25,840	12,530	1,373	900	2,585	32,553	20,549	8,505	1,019	669	1,811	27,629	18,515	6,870	2,244
	100.000%	59.776%	28.986%	3.176%	2.082%	5.980%	100.000%	63.125%	26.127%	3.130%	2.055%	5.563%	84.874%	67.013%	24.865%	8.122%
District 77																
*St. Tammany	43,291	34,787	3,850	847	826	2,981	32,072	26,253	2,672	578	554	2,015	28,968	25,271	1,950	1,747
District 77	43,291	34,787	3,850	847	826	2,981	32,072	26,253	2,672	578	554	2,015	28,968	25,271	1,950	1,747
	100.000%	80.356%	8.893%	1.957%	1.908%	6.886%	100.000%	81.856%	8.331%	1.802%	1.727%	6.283%	90.322%	87.238%	6.732%	6.031%
District 78																
*Jefferson	44,584	31,095	4,572	1,409	912	6,596	35,713	25,947	3,315	1,021	686	4,744	28,535	24,047	1,611	2,877
District 78	44,584	31,095	4,572	1,409	912	6,596	35,713	25,947	3,315	1,021	686	4,744	28,535	24,047	1,611	2,877
	100.000%	69.745%	10.255%	3.160%	2.046%	14.795%	100.000%	72.654%	9.282%	2.859%	1.921%	13.284%	79.901%	84.272%	5.646%	10.082%
District 79																
*Jefferson	45,579	27,198	5,976	3,506	648	8,251	35,828	22,474	4,170	2,626	483	6,075	28,657	20,690	2,642	5,325
District 79	45,579	27,198	5,976	3,506	648	8,251	35,828	22,474	4,170	2,626	483	6,075	28,657	20,690	2,642	5,325
	100.000%	59.672%	13.111%	7.692%	1.422%	18.103%	100.000%	62.727%	11.639%	7.329%	1.348%	16.956%	79.985%	72.199%	9.219%	18.582%
District 80																
*Jefferson	46,430	28,223	7,621	2,133	740	7,713	37,425	24,074	5,600	1,694	547	5,510	26,059	20,466	2,719	2,874
District 80	46,430	28,223	7,621	2,133	740	7,713	37,425	24,074	5,600	1,694	547	5,510	26,059	20,466	2,719	2,874
	100.000%	60.786%	16.414%	4.594%	1.594%	16.612%	100.000%	64.326%	14.963%	4.526%	1.462%	14.723%	69.630%	78.537%	10.434%	11.029%
District 81																
*Ascension	9,996	7,235	1,911	113	149	588	7,497	5,601	1,327	73	110	386	7,057	5,586	1,179	292
*Livingston	24,407	19,753	2,604	343	528	1,179	18,081	15,104	1,608	212	377	780	14,172	12,496	1,129	547
*St. James	11,071	6,940	3,865	45	45	176	8,429	5,385	2,851	22	34	137	7,819	4,995	2,708	116
District 81	45,474	33,928	8,380	501	722	1,943	34,007	26,090	5,786	307	521	1,303	29,048	23,077	5,016	955
	100.000%	74.610%	18.428%	1.102%	1.588%	4.273%	100.000%	76.719%	17.014%	0.903%	1.532%	3.832%	85.418%	79.444%	17.268%	3.288%
District 82																
*Jefferson	46,021	33,637	5,562	1,506	772	4,544	38,114	28,538	4,423	1,154	593	3,406	30,559	25,178	2,789	2,592
District 82	46,021	33,637	5,562	1,506	772	4,544	38,114	28,538	4,423	1,154	593	3,406	30,559	25,178	2,789	2,592
	100.000%	73.091%	12.086%	3.272%	1.677%	9.874%	100.000%	74.875%	11.605%	3.028%	1.556%	8.936%	80.178%	82.391%	9.127%	8.482%
District 83																
*Jefferson	43,956	13,203	25,303	1,485	588	3,377	33,127	11,018	18,076	1,199	475	2,359	27,728	9,200	16,022	2,506
District 83	43,956	13,203	25,303	1,485	588	3,377	33,127	11,018	18,076	1,199	475	2,359	27,728	9,200	16,022	2,506
	100.000%	30.037%	57.564%	3.378%	1.338%	7.683%	100.000%	33.260%	54.566%	3.619%	1.434%	7.121%	83.702%	33.179%	57.783%	9.038%
District 84																
*Jefferson	42,520	25,391	9,171	2,797	1,245	3,916	33,192	20,705	6,617	2,109	936	2,825	27,184	18,452	5,527	3,205
District 84	42,520	25,391	9,171	2,797	1,245	3,916	33,192	20,705	6,617	2,109	936	2,825	27,184	18,452	5,527	3,205
	100.000%	59.715%	21.569%	6.578%	2.928%	9.210%	100.000%	62.379%	19.936%	6.354%	2.820%	8.511%	81.899%	67.878%	20.332%	11.790%
District 85																
*Jefferson	44,303	16,171	16,447	2,071	1,038	8,576	33,223	13,397	11,800	1,612	782	5,632	22,377	11,096	7,895	3,386

Splits

Plan: 221ES-1 (Schexnayder) Original

	Total Population	Total White	Total Black	Total Asian	Total American Indian	Total Other	VAP Total	VAP White	VAP Black	VAP Asian	VAP American Indian	VAP Other	Reg Total Dec 2021	Reg White Dec 2021	Reg Black Dec 2021	Reg Other Dec 2021
District 85	44,303	16,171	16,447	2,071	1,038	8,576	33,223	13,397	11,800	1,612	782	5,632	22,377	11,096	7,895	3,386
	100.000%	36.501%	37.124%	4.675%	2.343%	19.358%	100.000%	40.324%	35.518%	4.852%	2.354%	16.952%	67.354%	49.587%	35.282%	15.132%
District 86																
*Tangipahoa	45,736	29,603	12,145	703	922	2,363	35,545	24,147	8,512	566	696	1,624	23,740	18,537	4,256	947
District 86	45,736	29,603	12,145	703	922	2,363	35,545	24,147	8,512	566	696	1,624	23,740	18,537	4,256	947
	100.000%	64.726%	26.555%	1.537%	2.016%	5.167%	100.000%	67.934%	23.947%	1.592%	1.958%	4.569%	66.789%	78.083%	17.928%	3.989%
District 87																
*Jefferson	45,538	9,472	27,818	3,492	464	4,292	34,404	7,965	20,324	2,723	358	3,034	25,405	5,674	16,190	3,541
District 87	45,538	9,472	27,818	3,492	464	4,292	34,404	7,965	20,324	2,723	358	3,034	25,405	5,674	16,190	3,541
	100.000%	20.800%	61.087%	7.668%	1.019%	9.425%	100.000%	23.151%	59.075%	7.915%	1.041%	8.819%	73.843%	22.334%	63.728%	13.938%
District 88																
*Ascension	42,684	33,617	5,060	525	752	2,730	31,082	25,270	3,208	324	521	1,759	26,979	23,422	2,304	1,253
District 88	42,684	33,617	5,060	525	752	2,730	31,082	25,270	3,208	324	521	1,759	26,979	23,422	2,304	1,253
	100.000%	78.758%	11.855%	1.230%	1.762%	6.396%	100.000%	81.301%	10.321%	1.042%	1.676%	5.659%	86.799%	86.816%	8.540%	4.644%
District 89																
*St. Tammany	45,218	38,271	1,907	1,159	733	3,148	34,586	29,787	1,288	775	537	2,199	32,496	29,429	882	2,185
District 89	45,218	38,271	1,907	1,159	733	3,148	34,586	29,787	1,288	775	537	2,199	32,496	29,429	882	2,185
	100.000%	84.637%	4.217%	2.563%	1.621%	6.962%	100.000%	86.124%	3.724%	2.241%	1.553%	6.358%	93.957%	90.562%	2.714%	6.724%
District 90																
*St. Tammany	43,451	28,287	10,147	1,069	1,044	2,904	33,711	22,946	7,077	778	809	2,101	28,008	20,315	5,649	2,044
District 90	43,451	28,287	10,147	1,069	1,044	2,904	33,711	22,946	7,077	778	809	2,101	28,008	20,315	5,649	2,044
	100.000%	65.101%	23.353%	2.460%	2.403%	6.683%	100.000%	68.067%	20.993%	2.308%	2.400%	6.232%	83.083%	72.533%	20.169%	7.298%
District 91																
*Orleans	42,508	19,571	18,417	1,155	557	2,808	35,352	17,328	14,399	1,008	449	2,168	30,330	14,337	13,238	2,755
District 91	42,508	19,571	18,417	1,155	557	2,808	35,352	17,328	14,399	1,008	449	2,168	30,330	14,337	13,238	2,755
	100.000%	46.041%	43.326%	2.717%	1.310%	6.606%	100.000%	49.016%	40.730%	2.851%	1.270%	6.133%	85.794%	47.270%	43.647%	9.083%
District 92																
*Jefferson	45,176	18,067	13,955	1,621	783	10,750	34,713	14,774	10,471	1,198	585	7,685	25,717	12,307	8,990	4,420
District 92	45,176	18,067	13,955	1,621	783	10,750	34,713	14,774	10,471	1,198	585	7,685	25,717	12,307	8,990	4,420
	100.000%	39.992%	30.890%	3.588%	1.733%	23.796%	100.000%	42.560%	30.164%	3.451%	1.685%	22.139%	74.085%	47.856%	34.957%	17.187%
District 93																
*Orleans	44,224	13,723	26,917	983	526	2,075	36,953	12,998	20,916	912	424	1,703	31,018	10,496	17,984	2,538
District 93	44,224	13,723	26,917	983	526	2,075	36,953	12,998	20,916	912	424	1,703	31,018	10,496	17,984	2,538
	100.000%	31.031%	60.865%	2.223%	1.189%	4.692%	100.000%	35.174%	56.602%	2.468%	1.147%	4.609%	83.939%	33.838%	57.979%	8.182%
District 94																
*Jefferson	21,154	12,640	3,247	1,375	336	3,556	16,856	10,649	2,398	1,028	251	2,530	11,633	9,099	1,091	1,443
*Orleans	24,531	19,887	1,348	1,053	286	1,957	18,930	15,590	983	754	218	1,385	17,429	15,114	751	1,564

Splits

Plan: 221ES-1 (Schexnayder) Original

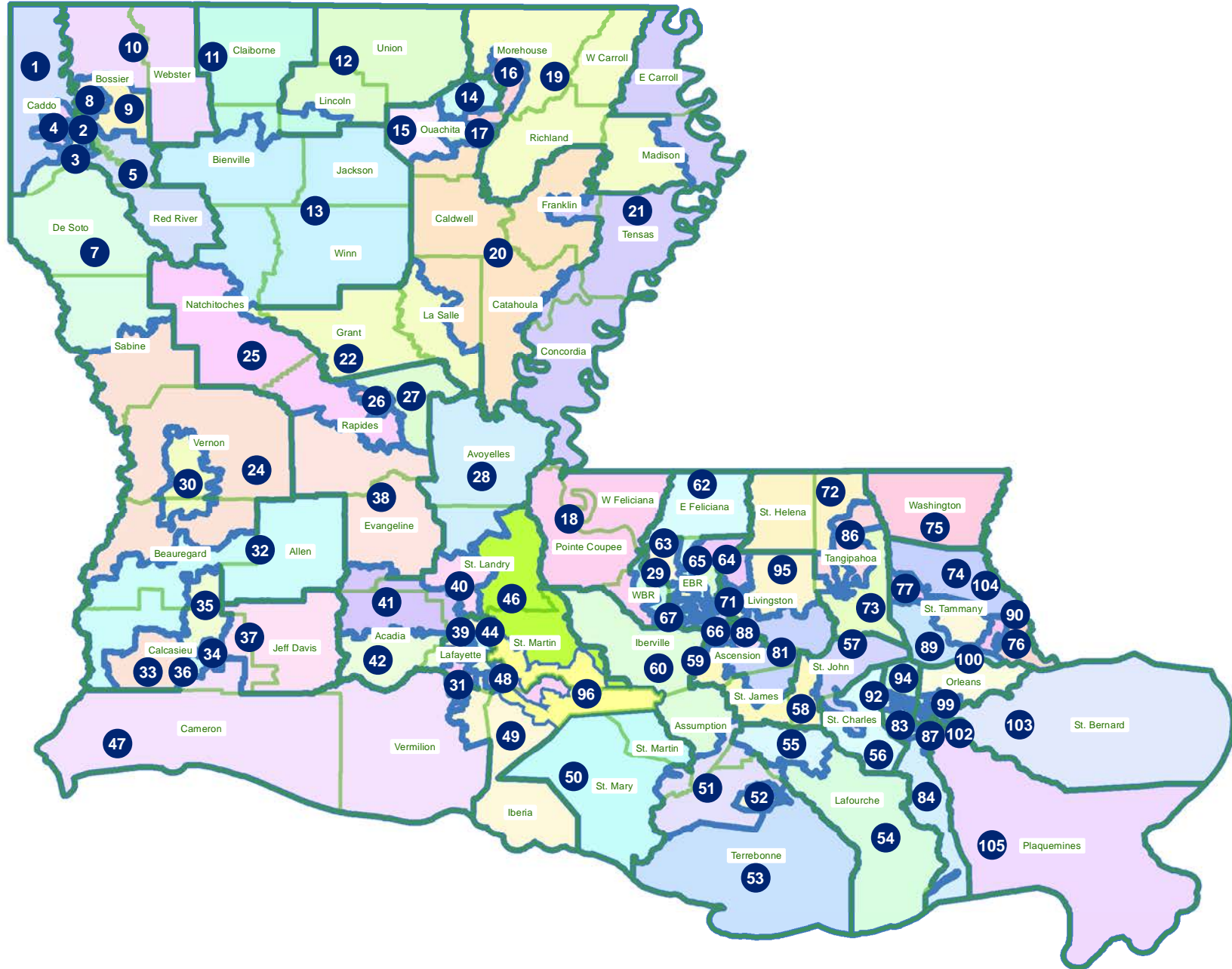
	Total Population	Total White	Total Black	Total Asian	Total American Indian	Total Other	VAP Total	VAP White	VAP Black	VAP Asian	VAP American Indian	VAP Other	Reg Total Dec 2021	Reg White Dec 2021	Reg Black Dec 2021	Reg Other Dec 2021
District 94	45,685	32,527	4,595	2,428	622	5,513	35,786	26,239	3,381	1,782	469	3,915	29,062	24,213	1,842	3,007
	100.000%	71.198%	10.058%	5.315%	1.361%	12.067%	100.000%	73.322%	9.448%	4.980%	1.311%	10.940%	81.211%	83.315%	6.338%	10.347%
District 95																
*Livingston	34,316	29,347	2,455	223	716	1,575	25,650	22,232	1,692	140	542	1,044	20,828	19,246	1,009	573
*Tangipahoa	9,021	4,198	4,075	79	115	554	6,641	3,432	2,710	59	83	357	4,448	2,484	1,776	188
District 95	43,337	33,545	6,530	302	831	2,129	32,291	25,664	4,402	199	625	1,401	25,276	21,730	2,785	761
	100.000%	77.405%	15.068%	0.697%	1.918%	4.913%	100.000%	79.477%	13.632%	0.616%	1.936%	4.339%	78.276%	85.971%	11.018%	3.011%
District 96																
*Iberia	28,256	9,339	16,999	841	214	863	20,997	7,724	11,883	632	144	614	16,692	5,974	10,064	654
*St. Martin	16,073	7,818	7,620	145	129	361	12,351	6,267	5,627	112	98	247	11,211	5,564	5,467	180
District 96	44,329	17,157	24,619	986	343	1,224	33,348	13,991	17,510	744	242	861	27,903	11,538	15,531	834
	100.000%	38.704%	55.537%	2.224%	0.774%	2.761%	100.000%	41.955%	52.507%	2.231%	0.726%	2.582%	83.672%	41.350%	55.661%	2.989%
District 97																
*Orleans	45,713	9,061	33,591	825	364	1,872	36,692	7,777	26,543	664	304	1,404	31,954	6,067	23,765	2,122
District 97	45,713	9,061	33,591	825	364	1,872	36,692	7,777	26,543	664	304	1,404	31,954	6,067	23,765	2,122
	100.000%	19.821%	73.482%	1.805%	0.796%	4.095%	100.000%	21.195%	72.340%	1.810%	0.829%	3.826%	87.087%	18.987%	74.373%	6.641%
District 98																
*Orleans	43,431	30,858	7,785	1,656	521	2,611	37,340	26,801	6,639	1,352	427	2,121	30,537	21,891	5,257	3,389
District 98	43,431	30,858	7,785	1,656	521	2,611	37,340	26,801	6,639	1,352	427	2,121	30,537	21,891	5,257	3,389
	100.000%	71.051%	17.925%	3.813%	1.200%	6.012%	100.000%	71.776%	17.780%	3.621%	1.144%	5.680%	81.781%	71.687%	17.215%	11.098%
District 99																
*Orleans	45,922	6,165	37,398	421	275	1,663	33,962	5,702	26,528	326	224	1,182	28,726	5,001	22,082	1,643
District 99	45,922	6,165	37,398	421	275	1,663	33,962	5,702	26,528	326	224	1,182	28,726	5,001	22,082	1,643
	100.000%	13.425%	81.438%	0.917%	0.599%	3.621%	100.000%	16.789%	78.111%	0.960%	0.660%	3.480%	84.583%	17.409%	76.871%	5.720%
District 100																
*Orleans	44,360	1,697	36,219	4,481	198	1,765	32,734	1,445	26,444	3,589	148	1,108	27,337	1,079	22,823	3,435
District 100	44,360	1,697	36,219	4,481	198	1,765	32,734	1,445	26,444	3,589	148	1,108	27,337	1,079	22,823	3,435
	100.000%	3.826%	81.648%	10.101%	0.446%	3.979%	100.000%	4.414%	80.785%	10.964%	0.452%	3.385%	83.513%	3.947%	83.488%	12.565%
District 101																
*East Baton Rouge	45,346	9,663	28,608	2,585	396	4,094	33,658	8,406	20,270	1,959	299	2,724	24,888	6,981	15,889	2,018
District 101	45,346	9,663	28,608	2,585	396	4,094	33,658	8,406	20,270	1,959	299	2,724	24,888	6,981	15,889	2,018
	100.000%	21.309%	63.088%	5.701%	0.873%	9.028%	100.000%	24.975%	60.223%	5.820%	0.888%	8.093%	73.944%	28.050%	63.842%	8.108%
District 102																
*Orleans	45,264	9,815	30,967	1,264	395	2,823	34,363	8,490	22,534	1,051	296	1,992	29,019	7,217	19,230	2,572
District 102	45,264	9,815	30,967	1,264	395	2,823	34,363	8,490	22,534	1,051	296	1,992	29,019	7,217	19,230	2,572
	100.000%	21.684%	68.414%	2.793%	0.873%	6.237%	100.000%	24.707%	65.576%	3.059%	0.861%	5.797%	84.448%	24.870%	66.267%	8.863%
District 103																
St. Bernard	43,764	24,497	12,309	1,381	947	4,630	31,775	18,992	7,944	982	688	3,169	25,653	18,233	5,497	1,923

Splits

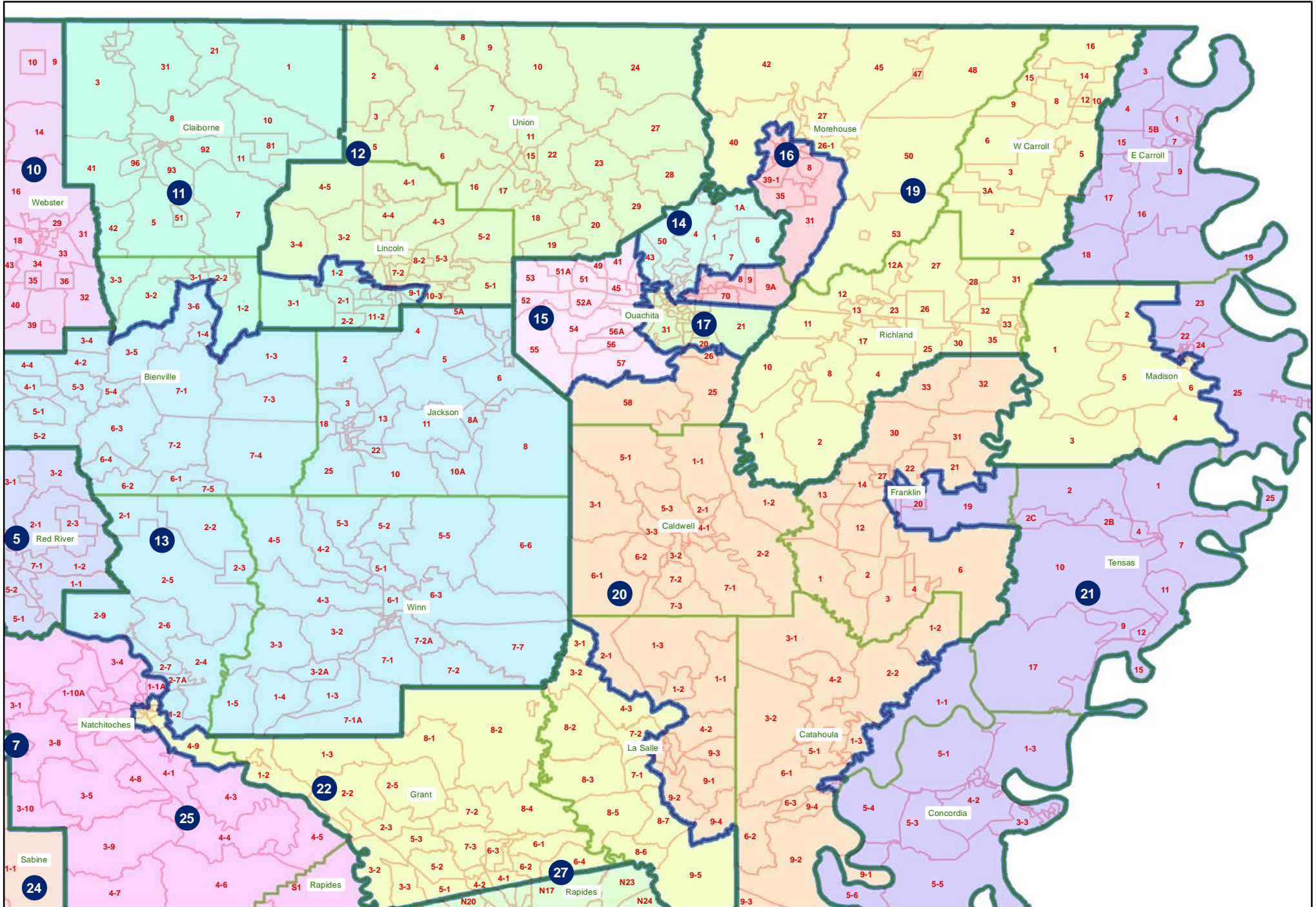
Plan: 221ES-1 (Schexnayder) Original

	Total Population	Total White	Total Black	Total Asian	Total American Indian	Total Other	VAP Total	VAP White	VAP Black	VAP Asian	VAP American Indian	VAP Other	Reg Total Dec 2021	Reg White Dec 2021	Reg Black Dec 2021	Reg Other Dec 2021
District 103	43,764	24,497	12,309	1,381	947	4,630	31,775	18,992	7,944	982	688	3,169	25,653	18,233	5,497	1,923
	100.000%	55.975%	28.126%	3.156%	2.164%	10.579%	100.000%	59.770%	25.001%	3.090%	2.165%	9.973%	80.733%	71.076%	21.428%	7.496%
District 104																
*St. Tammany	45,197	32,882	6,874	942	1,111	3,388	34,489	25,751	4,842	657	822	2,417	29,647	23,636	3,856	2,155
District 104	45,197	32,882	6,874	942	1,111	3,388	34,489	25,751	4,842	657	822	2,417	29,647	23,636	3,856	2,155
	100.000%	72.753%	15.209%	2.084%	2.458%	7.496%	100.000%	74.664%	14.039%	1.905%	2.383%	7.008%	85.961%	79.725%	13.006%	7.269%
District 105																
*Jefferson	14,515	4,899	6,534	1,621	132	1,329	11,239	3,825	4,977	1,324	111	1,002	8,442	2,642	4,096	1,704
*Orleans	5,336	991	3,904	184	23	234	4,119	875	2,899	143	22	180	3,013	609	2,120	284
Plaquemines	23,515	14,287	5,428	1,317	697	1,786	17,334	10,856	3,857	925	500	1,196	13,908	9,513	3,134	1,261
District 105	43,366	20,177	15,866	3,122	852	3,349	32,692	15,556	11,733	2,392	633	2,378	25,363	12,764	9,350	3,249
	100.000%	46.527%	36.586%	7.199%	1.965%	7.723%	100.000%	47.584%	35.890%	7.317%	1.936%	7.274%	77.582%	50.325%	36.865%	12.810%

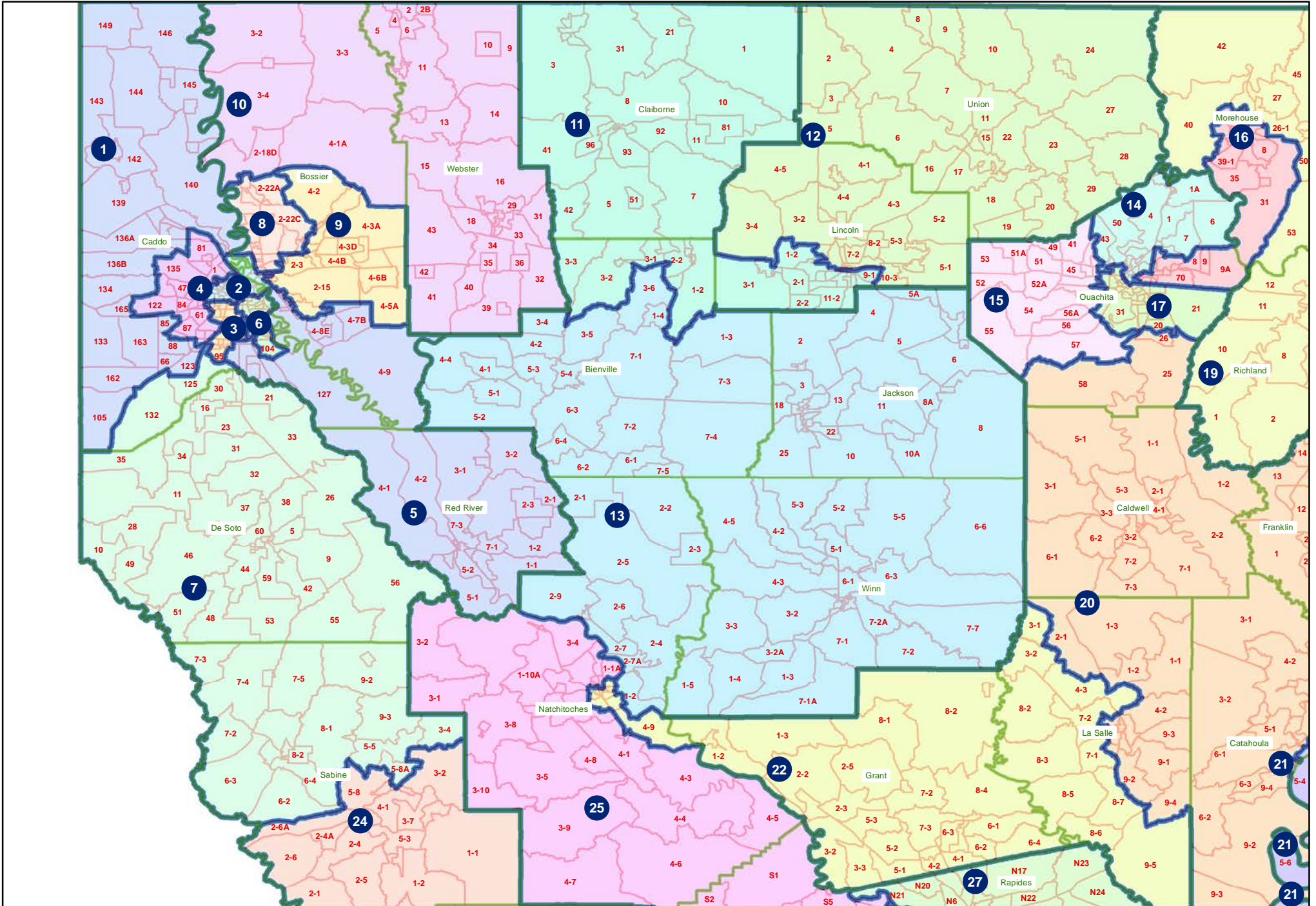
221ES-1 (Schexnayder) Original
Statewide



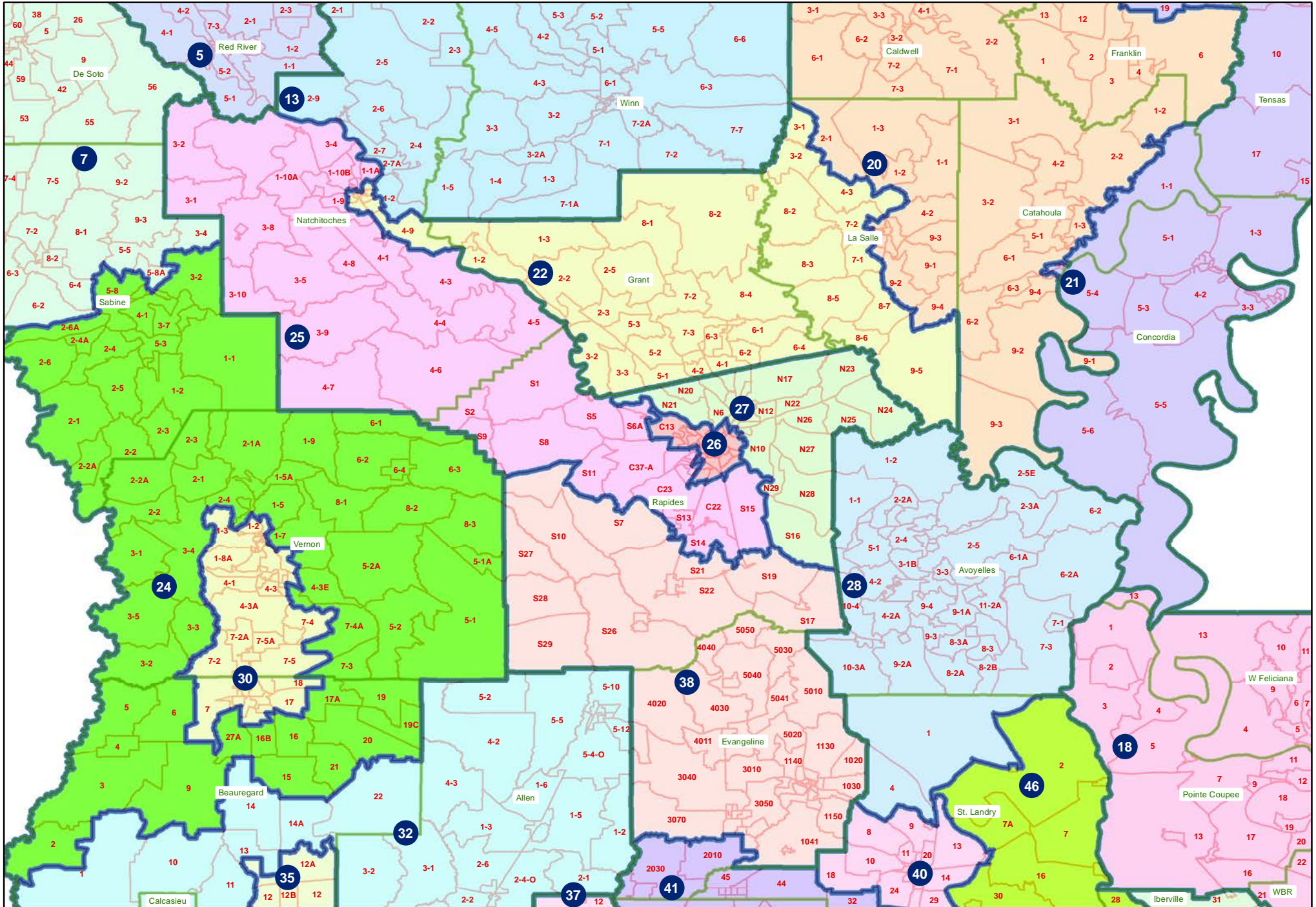
221ES-1 (Schexnayder) Original
Northeast



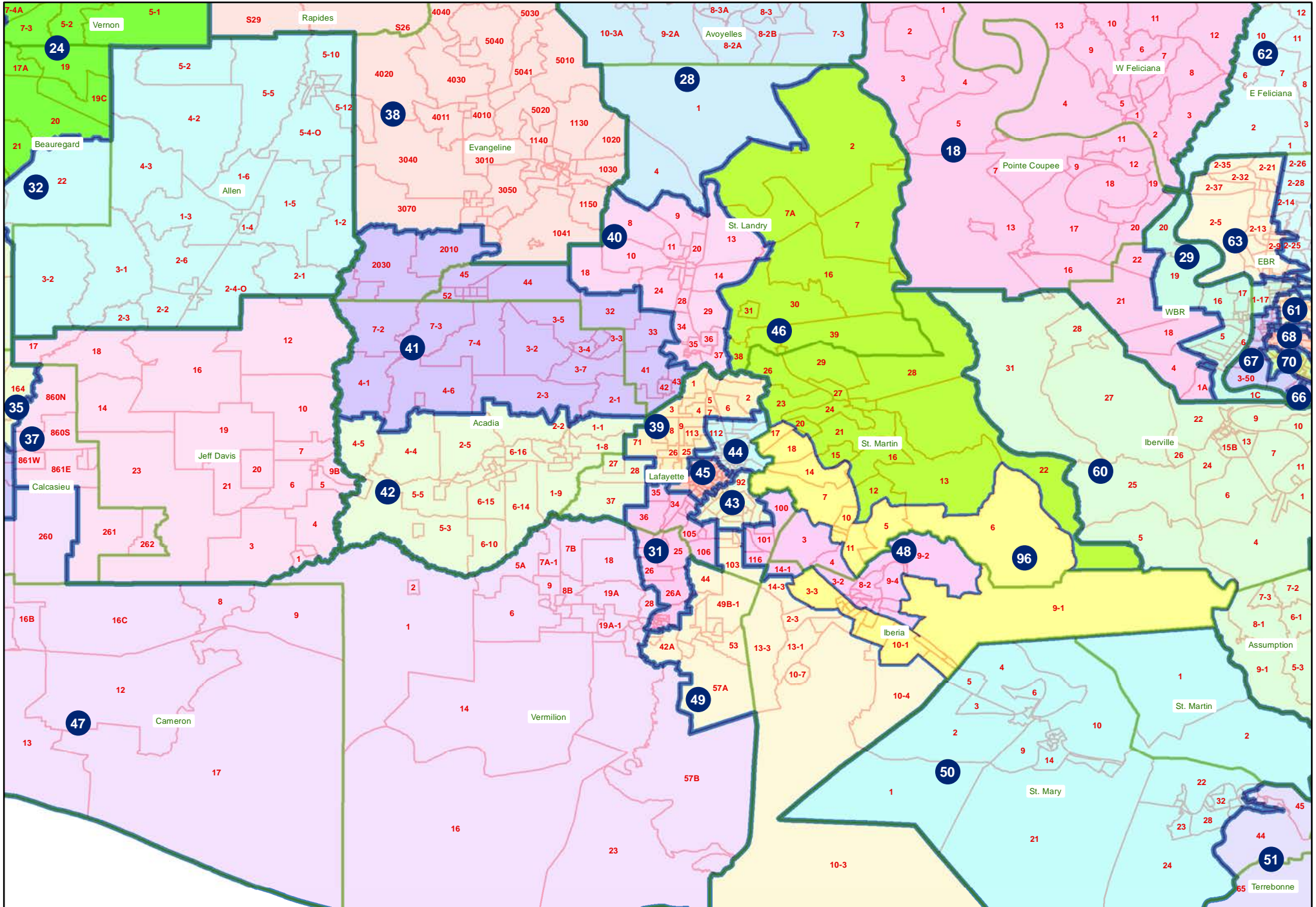
221ES-1 (Schexnayder) Original
Northwest



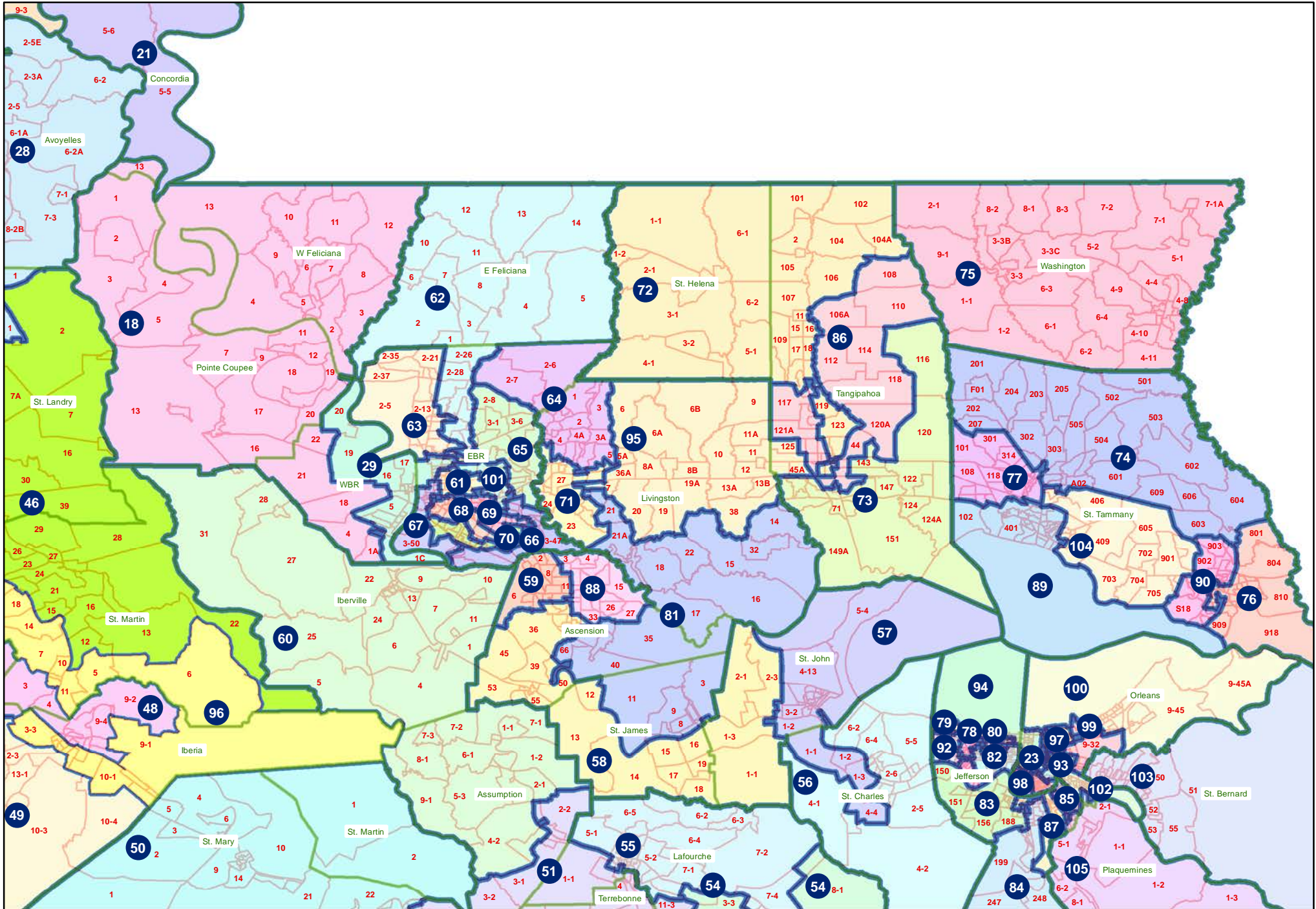
221ES-1 (Schexnayder) Original Central



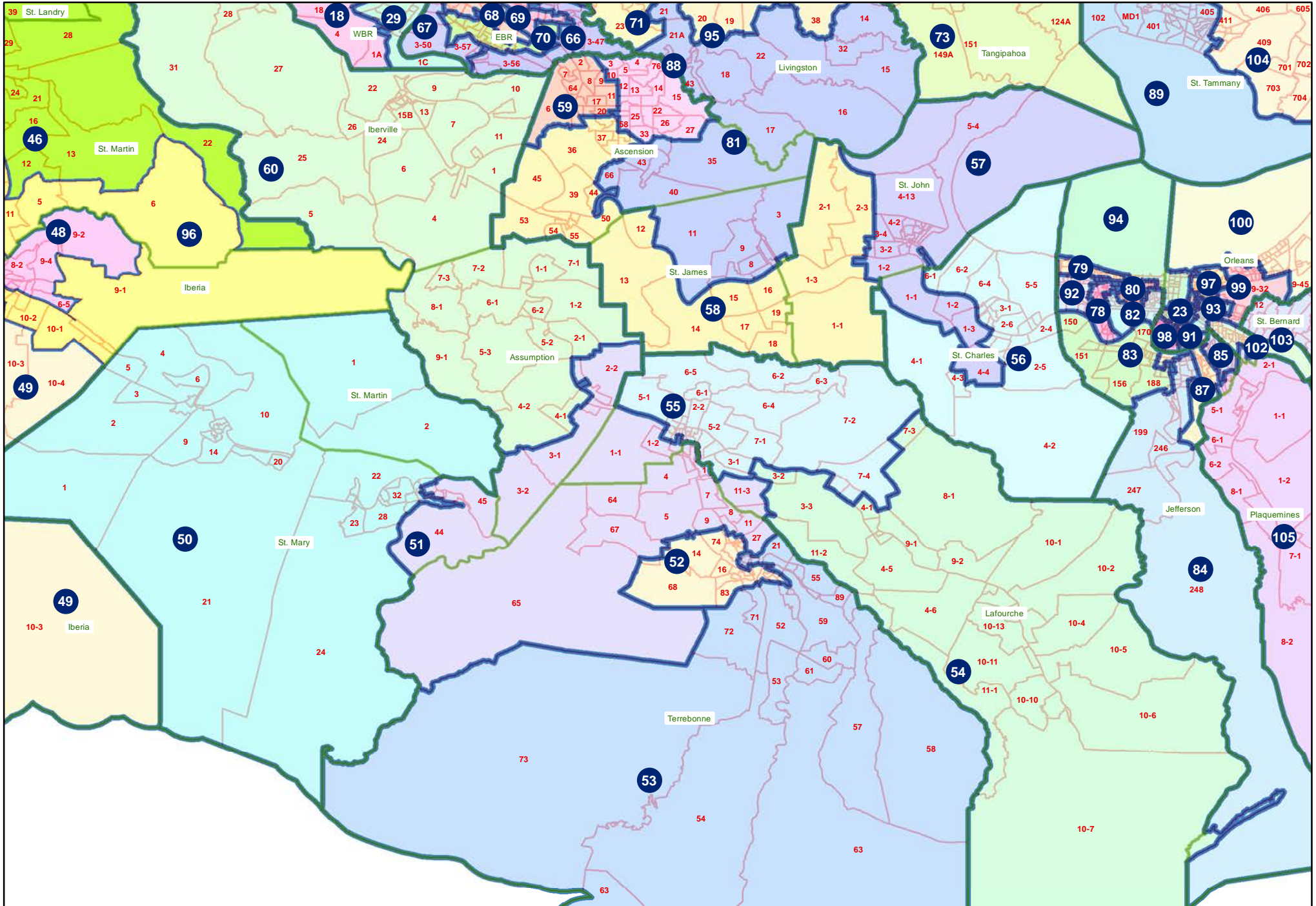
221ES-1 (Schexnayder) Original Acadiana



221ES-1 (Schexnayder) Original Florida Parishes



221ES-1 (Schexnayder) Original Bayou and River



221ES-1 (Schexnayder) Original

Jefferson and Orleans

