

SENATE COMMITTEE AMENDMENTS

2022 First Extraordinary Session

Amendments proposed by Senate Committee on Senate and Governmental Affairs to Original Senate Bill No. 7 by Senator Fields

1 AMENDMENT NO. 1

2 On page 1, delete lines 13 through 17

3 AMENDMENT NO. 2

4 Delete pages 2 through 4

5 AMENDMENT NO. 3

6 On page 5, delete lines 1 through 13, and insert:

7 "(1) District 1 is composed of Precincts 1, 2, 3, 4, 5, 6, 7, 8, 9, 10, 11, 12,
 8 13, 14, 15, 16, 17, 18, 20, 21, 22, 23, 24, 25, 26, 27, 28, 31, 33, 34, 35, 41, 43, 58, 61,
 9 62, 63, 64, 66, 71, 72, 73, 76, 77 and 78 of Ascension Parish; Precincts 1-7, 1-8,
 10 1-12, 1-33, 1-34, 1-35, 1-39, 1-40, 1-41, 1-42, 1-43, 1-44, 1-47, 1-48, 1-49, 1-52,
 11 1-53, 1-56, 1-57, 1-59, 1-64, 1-65, 1-66, 1-69, 1-73, 1-74, 1-75, 1-76, 1-79, 1-80,
 12 1-89, 1-99, 1-105, 1-107, 2-6, 2-7, 2-8, 2-33, 3-1, 3-2, 3-3, 3-4, 3-6, 3-7, 3-9, 3-10,
 13 3-11, 3-13, 3-14, 3-15, 3-16, 3-17, 3-18, 3-19, 3-22, 3-23, 3-25, 3-26, 3-29, 3-30,
 14 3-31, 3-33, 3-34, 3-35, 3-36, 3-37, 3-38, 3-39, 3-40, 3-41, 3-43, 3-45, 3-46, 3-47,
 15 3-48, 3-49, 3-51, 3-52, 3-53, 3-55, 3-56, 3-59, 3-60, 3-61, 3-62, 3-63, 3-64, 3-65,
 16 3-66, 3-67, 3-68, 3-70 and 3-71 of East Baton Rouge Parish; Precincts 192, 198,
 17 199, 203, 246, 247, 248, 1-GI and 1-L of Jefferson Parish; Precincts 2-12, 2-13,
 18 3-1, 3-2, 3-3, 3-4, 3-5, 3-6, 4-1, 4-2, 4-3, 4-4, 4-5, 4-6, 5-2, 6-2, 6-3, 6-4, 7-1, 7-2,
 19 7-3, 7-4, 8-1, 9-1, 9-2, 10-1, 10-2, 10-3, 10-4, 10-5, 10-6, 10-7, 10-8, 10-9, 10-10,
 20 10-11, 10-12, 10-13, 10-14, 10-15, 10-16, 11-1, 11-2, 11-3, 11-4 and 11-5 of
 21 Lafourche Parish; Livingston Parish; Plaquemines Parish; St. Charles Parish;
 22 Precincts 17, 18 and 19 of St. James Parish and Precincts 1-1, 4-13 and 5-4 of St.
 23 John the Baptist Parish.

24 (2) District 2 is composed of Precincts 104, 108, 115, 116, 150, 151, 152,
 25 153, 154, 155, 156, 157A, 157B, 170, 171, 172, 173, 174, 175, 176, 177, 178, 179A,
 26 179B, 180, 181, 182, 183, 184, 185A, 185B, 187, 188, 189, 190, 191, 193A, 193B,
 27 194A, 194B, 195, 196, 197A, 197B, 200, 201, 202, 204, 205, 210, 211, 212, 213A,
 28 213B, 213C, 214A, 214B, 215, 216A, 216B, 216C, 217, 225, 226, 227, 228, 229,
 29 230, 231, 232A, 232B, 234, 235, 236, 237, 238A, 238B, 1-G, 2-G, 3-G, 4-G, 5-G,
 30 6-G, 7-G, 8-G, 9-G, 10-G, 11-G, 12-G, 13-G, 13-KA, 13-KB, 21-K, 22-K, 23-K,
 31 24-K, 26-K, 31-K, 33-K, 1-W, 2-W, 3-W, 4-W, 5-W, 6-W and 7-W of Jefferson
 32 Parish and Orleans Parish.

33 (3) District 3 is composed of Precincts 1, 2, 3, 4, 5, 7, 8, 9, 10, 11, 12, 13,
 34 14, 15, 16, 17, 18, 19, 20, 21, 22, 23, 24, 25, 26, 27, 28, 29, 30, 31, 32, 33, 34, 35, 36,
 35 37, 38, 39, 40, 41, 42, 43, 44, 45, 46, 51, 52, 53, 54, 55, 56, 57, 58, 59, 60, 61, 62, 63,
 36 64, 65, 66, 67, 68, 69, 70, 71, 72, 73, 74, 75, 76, 77, 78, 79, 80, 81, 82, 83, 84, 85, 86,
 37 87, 88, 89, 90, 91, 92, 93, 94, 95, 96, 97, 98, 99, 100, 101, 102, 103, 105, 106, 117,
 38 118, 119, 120, 121, 122, 123, 124, 125A, 125B, 126, 127, 128, 129, 130, 131, 132,
 39 133, 134, 136, 138, 1-H, 2-H, 3-H, 4-H, 5-H, 6-H, 7-H, 8-H, 9-H, 1-K, 2-K, 3-K,
 40 4-K, 5-K, 6-KA, 6-KB, 7-KA, 7-KB, 8-K, 9-K, 10-K, 11-K, 12-K, 14-K, 15-K,
 41 16-K, 17-K, 18-K, 19-K, 20-K, 25-K, 27-K, 28-K, 29-K, 30-K, 34-K and 35-K of
 42 Jefferson Parish; St. Bernard Parish; St. Tammany Parish and Washington
 43 Parish.

44 (4) District 4 is composed of Precincts 1-3, 5-2, 5-3, 5-4, 6-1, 6-2, 6-3, 6-4,
 45 7-2, 7-3, 7-4 and 7-5 of Bienville Parish; Precincts 1-1, 1-2, 1-3, 1-3A, 1-3B, 1-4,
 46 1-5, 2-1, 2-2, 2-3, 2-4, 2-18B, 2-18C, 2-18D, 2-18E, 2-18F, 2-18G, 2-21A, 2-21B,
 47 2-21C, 2-21D, 2-22A, 2-22B, 2-22C, 3-1, 3-2, 3-3, 3-4, 4-1A, 4-2, 4-3A, 4-3B,
 48 4-3C, 4-3D, 4-4A, 4-4B, 4-6A, 4-6B, 4-7A, 4-7B, 4-8A, 4-8B, 4-8E, 4-8G, 4-9,

1 4-10, 4-11A, 4-11B and 4-11C of Bossier Parish; Precincts 66, 105, 106 (Part)
 2 Tract 024503 - Blocks 1013, 1015; 122 (Part) Tract 024306 - Blocks 1031, 1038;
 3 123, 125, 132, 133, 134, 135, 136A, 136B, 137, 138, 139, 140, 142, 143, 144, 145,
 4 146, 149, 151, 154, 155, 156, 157, 158, 160, 161, 162, 163, 165 and 166 of Caddo
 5 Parish; Caldwell Parish; Catahoula Parish; Precincts 1, 3, 7, 21, 31, 34, 35, 36,
 6 37, 41, 42, 91 and 92 of Claiborne Parish; Concordia Parish; Precincts 10, 11,
 7 16, 22, 23, 28, 30, 35, 37, 46, 48, 49, 51 and 53 of De Soto Parish; Grant Parish;
 8 Precincts 1, 2, 3, 5A, 8, 8A, 9, 10, 10A, 11, 11A, 13A, 17, 18, 22, 25, 25A and 25B
 9 of Jackson Parish; La Salle Parish; Precincts 3-2, 3-4, 3-5, 3-6, 4-1, 4-2, 4-3, 4-4,
 10 4-5, 4-6, 5-1, 5-2, 5-3, 5-4, 6-1, 6-2, 6-3, 7-1, 7-2, 8-1, 8-2, 8-3, 8-4, 9-2, 9-3, 9-4,
 11 9-5, 10-3, 12-2, 12-3, 12-4 and 12-5 of Lincoln Parish; Precincts 6, 23, 26-1, 27,
 12 29, 40, 42, 45, 47, 48, 50, 53 and 54 of Morehouse Parish; Precincts 1-1A, 1-2,
 13 1-6, 1-7, 1-9, 1-9A, 1-10, 1-10A, 1-10B, 1-11, 1-12, 2-1, 2-2, 2-3, 2-4, 2-5, 2-6,
 14 2-7A, 2-9, 3-1, 3-2, 3-3, 3-5, 3-6, 3-8, 3-9, 3-10, 4-1, 4-2, 4-3, 4-4, 4-5, 4-6, 4-7, 4-8
 15 and 4-9 of Natchitoches Parish; Rapides Parish; Precincts 1-1, 1-2, 2-1, 2-3, 3-1,
 16 3-2, 3-3 and 7-1 of Red River Parish; Sabine Parish; Union Parish; Vernon
 17 Parish; Precincts 1, 2, 2B, 3, 4, 5, 6, 8, 9, 10, 11, 12, 13, 14, 15, 16, 17, 28, 29 and
 18 31 of Webster Parish; West Carroll Parish and Winn Parish.

19 (5) District 5 is composed of Precincts 1-1, 1-2, 1-4, 2-1, 2-2, 2-3, 2-4, 2-5,
 20 2-6, 3-1, 3-2, 3-3, 3-4, 3-5, 3-6, 3-7, 4-1, 4-2, 4-4, 5-1 and 7-1 of Bienville Parish;
 21 Precincts 2-3A, 2-5A, 2-6, 2-7, 2-8, 2-9, 2-10, 2-11, 2-11A, 2-12A, 2-12B, 2-12C,
 22 2-13, 2-14, 2-15, 2-16, 2-17A, 2-17B, 2-19, 2-20, 2-23, 4-5A, 4-8C and 4-8D of
 23 Bossier Parish; Precincts 1, 2, 3, 4, 5A, 5B, 6, 7, 8, 9, 10, 11, 12, 13, 14, 15, 16, 17,
 24 20, 21, 22, 23, 24, 25, 26, 27, 28, 29, 30, 31, 32, 34, 35, 36, 37, 38, 39, 40, 41, 43, 44,
 25 45, 46, 47, 48, 49, 50, 51, 52, 53, 54, 55, 56, 57, 58, 59, 60, 61, 62, 63, 64, 65, 67, 68,
 26 69, 70, 71, 72, 73, 74, 75, 76, 77, 78, 79, 80, 81, 82, 83, 84, 85, 86, 87, 88, 89, 90, 91,
 27 92, 93, 94, 95, 97, 98, 99, 100, 101, 102, 103, 104, 106 (Part) Tract 024503 -
 28 Blocks 1000, 1001, 1002, 1003, 1004, 1005, 1006, 1007, 1008, 1009, 1010, 1011,
 29 1012, 1014, 1016, 1017, 1018, 1019, 1020, 1021, 1022, 1023, 1024, 1025, 1026,
 30 1027, 1028, 1029, 1030, 1031, 1032, 1033, 2004, 2005, 2006, 2007, 2008, 2009,
 31 2010; 107, 108, 109, 110, 111, 112, 113, 114, 115, 122 (Part) Tract 024306 -
 32 Blocks 1001, 1002, 1003, 1004, 1005, 1006, 1007, 1008, 1009, 1010, 1011, 1012,
 33 1013, 1014, 1015, 1016, 1017, 1018, 1019, 1020, 1021, 1022, 1023, 1024, 1025,
 34 1026, 1027, 1028, 1029, 1030, 1032, 1033, 1034, 1035, 1036, 1037, 1039, 2000,
 35 2001, 2002, 2003, 2004, 2005, 2006, 2007, 2008, 2009, 2010, 2011, 2012, 2013,
 36 2014, 2015, 2016, 2017, 2018, 2019, 2020, 2021, 2022, 2023, 2024, 2025, 2026,
 37 2027, 2028, 2029, 2030, 2031, 2032, 2033; 126, 127, 128 and 129 of Caddo Parish;
 38 Precincts 5, 8, 10, 11, 51, 81, 84, 85, 87, 88, 93 and 96 of Claiborne Parish;
 39 Precincts 1, 4, 5, 6, 9, 21, 26, 31, 32, 33, 34, 38, 42, 44, 55, 56, 59, 60 and 63 of De
 40 Soto Parish; East Carroll Parish; Franklin Parish; Precincts 4, 5, 6, 6A, 7, 13,
 41 15, 16, 17A, 19A, 19AI, 20 and 20A of Jackson Parish; Precincts 1-1, 1-2, 1-3,
 42 2-1, 2-2, 3-1, 3-3, 9-1, 10-1, 10-2, 10-4, 10-5, 11-1, 11-2, 11-3, 11-4, 12-1 and 12-6
 43 of Lincoln Parish; Madison Parish; Precincts 1, 3-1, 7, 8, 12, 13, 14, 16, 20, 21,
 44 24, 31, 32, 35, 37, 39-1 and 39-2 of Morehouse Parish; Precincts 1-1, 1-3, 1-3A,
 45 1-4, 1-4A, 1-5, 1-5A, 1-8, 1-13, 1-14, 2-7, 2-8, 3-4 and 3-7 of Natchitoches Parish;
 46 Ouachita Parish; Precincts 4-1, 4-2, 4-3, 4-5, 5-1, 5-2, 6-1, 6-2, 7-2 and 7-3 of Red
 47 River Parish; Richland Parish; Tensas Parish and Precincts 17A, 18, 22, 24, 25,
 48 25A, 26, 27, 32, 33, 34, 35, 36, 38, 39, 40, 41, 42 and 43 of Webster Parish.

49 (6) District 6 is composed of Assumption Parish; Iberia Parish;
 50 Precincts 5, 24, 25, 26, 27, 28, 29, 31 and 32 of Iberville Parish; Lafayette
 51 Parish; Precincts 1-1, 1-2, 1-3, 1-4, 1-5, 2-1, 2-1A, 2-2, 2-3, 2-3A, 2-4, 2-5, 2-6,
 52 2-7, 2-8, 2-9, 2-10, 2-11, 2-14, 5-1, 5-1A, 5-1B, 6-1 and 6-5 of Lafourche Parish;
 53 St. Martin Parish; St. Mary Parish and Terrebonne Parish.

54 (7) District 7 is composed of Precincts 30, 32, 36, 37, 39, 40, 42, 44, 45,
 55 47, 48, 50, 51, 52, 53, 54, 55, 57 and 65 of Ascension Parish; Precincts 1-1, 1-2,
 56 1-3, 1-4, 1-5, 1-6, 1-9, 1-10, 1-11, 1-13, 1-14, 1-15, 1-16, 1-17, 1-18, 1-19, 1-20,
 57 1-21, 1-22, 1-23, 1-24, 1-25, 1-26, 1-27, 1-28, 1-29, 1-30, 1-31, 1-32, 1-36, 1-37,
 58 1-38, 1-45, 1-46, 1-50, 1-51, 1-54, 1-55, 1-58, 1-60, 1-61, 1-62, 1-63, 1-67, 1-68,
 59 1-70, 1-71, 1-72, 1-77, 1-78, 1-81, 1-82, 1-83, 1-84, 1-85, 1-86, 1-87, 1-88, 1-90,
 60 1-91, 1-92, 1-93, 1-94, 1-95, 1-97, 1-98, 1-100, 1-101, 1-102, 1-103, 1-104, 2-1, 2-2,
 61 2-3, 2-4, 2-5, 2-9, 2-10, 2-11, 2-12, 2-13, 2-14, 2-15, 2-16, 2-17, 2-18, 2-19, 2-20,

1 2-21, 2-22, 2-23, 2-24, 2-25, 2-26, 2-27, 2-28, 2-29, 2-30, 2-31, 2-32, 2-34, 2-35,
2 2-36, 2-37, 3-5, 3-8, 3-12, 3-20, 3-21, 3-24, 3-27, 3-28, 3-32, 3-44, 3-50, 3-54, 3-57,
3 3-58, 3-69 and 3-72 of East Baton Rouge Parish; East Feliciana Parish;
4 Precincts 1, 3, 4, 6, 7, 9, 10, 11, 12, 13, 13C, 14, 14A, 15, 15B, 16, 17, 18, 19, 20,
5 21, 22 and 23 of Iberville Parish; Pointe Coupee Parish; St. Helena Parish;
6 Precincts 1, 2, 3, 4, 5, 6, 7, 8, 9, 10, 11, 12, 13, 14, 15 and 16 of St. James Parish;
7 Precincts 1-2, 1-3, 1-4, 1-5, 2-1, 2-2, 2-3, 2-4, 3-1, 3-2, 3-4, 4-1, 4-2, 4-3, 4-14, 5-1,
8 5-7, 5-8, 6-1, 6-3, 6-4, 7-2, 7-3, 7-5 and 7-7 of St. John the Baptist Parish;
9 Tangipahoa Parish; West Baton Rouge Parish and West Feliciana Parish.
10 (8) District 8 is composed of Acadia Parish; Allen Parish; Avoyelles
11 Parish; Beauregard Parish; Calcasieu Parish; Cameron Parish; Evangeline
12 Parish; Jefferson Davis Parish; St. Landry Parish and Vermilion Parish."

Plan Statistics

Plan: SCA SB7-87

<u>Districts:</u>	<u># of Members</u>	<u>Actual Population</u>	<u>Ideal Population</u>	<u>Absolute Deviation</u>	<u>Relative Deviation</u>
District 1	1	606,007	582,219	23,788	4.086%
District 2	1	577,285	582,219	-4,934	-0.847%
District 3	1	586,038	582,219	3,819	0.656%
District 4	1	575,569	582,219	-6,650	-1.142%
District 5	1	557,693	582,219	-24,526	-4.213%
District 6	1	582,785	582,219	566	0.097%
District 7	1	588,911	582,219	6,692	1.149%
District 8	1	583,469	582,219	1,250	0.215%

Grand Total:	8	4,657,757	4,657,752
---------------------	----------	------------------	------------------

Ideal Population Per Member:	582219			
Number of Districts for Plan Type:	8			
Range of District Populations:	557,693	to	606,007	
Absolute Mean Deviation:	6,039			
Absolute Range:	-24,526	to	23,788	
Absolute Overall Range:	48,314			
Relative Mean Deviation:	1.55%			
Relative Range:	-4.21%	to	4.09%	
Relative Overall Range:	8.30%			

<i>Ideal - Actual:</i>	-5
<i>Remainder:</i>	5
<i>Unassigned Population:</i>	0

Total Population

Plan: SCA SB7-87

	Total Population	Total White	Total Black	Total Asian	Total American Indian	Total Other	Total Hispanic	VAP Total	VAP White	VAP Black	VAP Asian	VAP American Indian	VAP Other	VAP Hispanic Total
District 1	606,007	441,400	98,138	16,433	13,621	36,415	42,368	461,274	345,757	69,054	11,739	9,789	24,935	28,044
	100.000%	72.837%	16.194%	2.712%	2.248%	6.009%	6.991%	100.000%	74.957%	14.970%	2.545%	2.122%	5.406%	6.080%
District 2	577,285	188,873	311,629	23,831	6,810	46,142	61,506	453,053	161,995	233,612	19,136	5,369	32,941	43,871
	100.000%	32.717%	53.982%	4.128%	1.180%	7.993%	10.654%	100.000%	35.756%	51.564%	4.224%	1.185%	7.271%	9.683%
District 3	586,038	399,014	95,614	18,769	11,303	61,338	75,357	455,095	321,451	67,417	13,812	8,393	44,022	52,984
	100.000%	68.087%	16.315%	3.203%	1.929%	10.467%	12.859%	100.000%	70.634%	14.814%	3.035%	1.844%	9.673%	11.642%
District 4	575,569	397,800	130,248	8,849	16,301	22,371	27,354	442,765	313,610	94,285	6,486	12,164	16,220	19,115
	100.000%	69.114%	22.629%	1.537%	2.832%	3.887%	4.753%	100.000%	70.830%	21.295%	1.465%	2.747%	3.663%	4.317%
District 5	557,693	242,209	281,582	8,565	7,926	17,411	20,892	423,959	196,619	202,325	6,460	6,188	12,367	14,457
	100.000%	43.431%	50.491%	1.536%	1.421%	3.122%	3.746%	100.000%	46.377%	47.723%	1.524%	1.460%	2.917%	3.410%
District 6	582,785	361,494	162,937	12,226	15,724	30,404	35,896	443,349	287,697	115,160	8,802	10,927	20,763	24,016
	100.000%	62.029%	27.958%	2.098%	2.698%	5.217%	6.159%	100.000%	64.892%	25.975%	1.985%	2.465%	4.683%	5.417%
District 7	588,911	231,389	312,061	10,193	6,414	28,854	34,761	451,739	190,945	227,702	7,908	4,889	20,295	24,139
	100.000%	39.291%	52.990%	1.731%	1.089%	4.900%	5.903%	100.000%	42.269%	50.406%	1.751%	1.082%	4.493%	5.344%
District 8	583,469	395,473	150,910	8,422	8,961	19,703	24,415	439,314	306,437	106,214	6,073	6,521	14,069	17,036
	100.000%	67.780%	25.864%	1.443%	1.536%	3.377%	4.184%	100.000%	69.754%	24.177%	1.382%	1.484%	3.202%	3.878%
Grand Total	4,657,757	2,657,652	1,543,119	107,288	87,060	262,638	322,549	3,570,548	2,124,511	1,115,769	80,416	64,240	185,612	223,662
	100.000%	57.059%	33.130%	2.303%	1.869%	5.639%	6.925%	100.000%	59.501%	31.249%	2.252%	1.799%	5.198%	6.264%

Voter Registration

Plan: SCA SB7-87

	Reg Total Dec 2021	Reg White Dec 2021	Reg Black Dec 2021	Reg Other Dec 2021	Reg Dem Total Dec 2021	Reg Rep Total Dec 2021	Reg Other Total Dec 2021
District 1	383,321	308,172	53,551	21,598	109,364	167,013	106,944
	83.100%	80.395%	13.970%	5.634%	28.531%	43.570%	27.899%
District 2	367,243	133,635	196,559	37,049	223,084	45,432	98,727
	81.060%	36.389%	53.523%	10.088%	60.746%	12.371%	26.883%
District 3	373,925	292,917	47,826	33,182	102,611	159,599	111,715
	82.164%	78.336%	12.790%	8.874%	27.442%	42.682%	29.876%
District 4	354,500	266,982	72,992	14,526	108,505	156,343	89,652
	80.065%	75.312%	20.590%	4.098%	30.608%	44.102%	25.290%
District 5	343,597	164,983	165,918	12,696	161,943	98,769	82,885
	81.045%	48.016%	48.289%	3.695%	47.132%	28.746%	24.123%
District 6	363,930	252,238	93,368	18,324	127,486	137,075	99,369
	82.087%	69.309%	25.655%	5.035%	35.030%	37.665%	27.304%
District 7	355,114	151,941	188,802	14,371	192,513	78,099	84,502
	78.610%	42.787%	53.167%	4.047%	54.212%	21.993%	23.796%
District 8	352,716	257,121	83,732	11,863	135,498	126,450	90,768
	80.288%	72.897%	23.739%	3.363%	38.416%	35.850%	25.734%
Grand Total	2,894,346	1,827,989	902,748	163,609	1,161,004	968,780	764,562

Splits

Plan: SCA SB7-87

	Total Population	Total White	Total Black	Total Asian	Total American Indian	Total Other	VAP Total	VAP White	VAP Black	VAP Asian	VAP American Indian	VAP Other	Reg Total Dec 2021	Reg White Dec 2021	Reg Black Dec 2021	Reg Other Dec 2021
District 1																
*Ascension	101,132	73,410	16,731	2,107	1,723	7,161	73,272	54,821	11,241	1,369	1,190	4,651	63,764	51,106	9,036	3,622
*East Baton Rouge	199,353	137,331	38,995	9,128	2,781	11,118	159,364	113,295	28,832	6,845	2,192	8,200	131,837	101,768	21,436	8,633
*Jefferson	15,252	10,591	2,329	651	582	1,099	11,656	8,297	1,651	475	431	802	10,196	7,842	1,457	897
*Lafourche	65,244	51,410	5,892	666	3,707	3,569	49,649	40,591	3,798	472	2,430	2,358	39,305	34,512	2,733	2,060
Livingston	142,282	116,855	12,658	1,697	3,111	7,961	105,141	88,432	8,136	1,099	2,311	5,163	84,568	76,062	5,425	3,081
Plaquemines	23,515	14,287	5,428	1,317	697	1,786	17,334	10,856	3,857	925	500	1,196	13,908	9,513	3,134	1,261
St. Charles	52,549	33,550	13,928	837	925	3,309	39,541	26,154	9,890	529	667	2,301	34,985	24,309	8,797	1,879
*St. James	3,403	2,162	1,132	9	23	77	2,725	1,762	888	7	17	51	2,570	1,604	924	42
*St. John the Baptist	3,277	1,804	1,045	21	72	335	2,592	1,549	761	18	51	213	2,188	1,456	609	123
District 1	606,007	441,400	98,138	16,433	13,621	36,415	461,274	345,757	69,054	11,739	9,789	24,935	383,321	308,172	53,551	21,598
	100.000%	72.837%	16.194%	2.712%	2.248%	6.009%	100.000%	74.957%	14.970%	2.545%	2.122%	5.406%	83.100%	80.395%	13.970%	5.634%
District 2																
*Jefferson	193,288	62,411	92,660	10,975	3,144	24,098	146,857	51,743	67,544	8,616	2,421	16,533	110,999	41,649	55,034	14,316
Orleans	383,997	126,462	218,969	12,856	3,666	22,044	306,196	110,252	166,068	10,520	2,948	16,408	256,244	91,986	141,525	22,733
District 2	577,285	188,873	311,629	23,831	6,810	46,142	453,053	161,995	233,612	19,136	5,369	32,941	367,243	133,635	196,559	37,049
	100.000%	32.717%	53.982%	4.128%	1.180%	7.993%	100.000%	35.756%	51.564%	4.224%	1.185%	7.271%	81.060%	36.389%	53.523%	10.088%
District 3																
*Jefferson	232,241	147,933	31,228	11,398	3,960	37,722	186,141	124,095	22,980	8,601	2,983	27,482	141,906	110,125	13,085	18,696
St. Bernard	43,764	24,497	12,309	1,381	947	4,630	31,775	18,992	7,944	982	688	3,169	25,653	18,233	5,497	1,923
St. Tammany	264,570	196,641	38,643	5,774	5,660	17,852	202,228	154,621	26,761	4,075	4,161	12,610	178,779	145,724	21,142	11,913
Washington	45,463	29,943	13,434	216	736	1,134	34,951	23,743	9,732	154	561	761	27,587	18,835	8,102	650
District 3	586,038	399,014	95,614	18,769	11,303	61,338	455,095	321,451	67,417	13,812	8,393	44,022	373,925	292,917	47,826	33,182
	100.000%	68.087%	16.315%	3.203%	1.929%	10.467%	100.000%	70.634%	14.814%	3.035%	1.844%	9.673%	82.164%	78.336%	12.790%	8.874%
District 4																
*Bienville	4,914	3,705	999	43	109	58	3,757	2,822	796	24	78	37	3,253	2,497	725	31
*Bossier	92,703	67,369	15,877	2,346	2,576	4,535	69,341	51,498	11,344	1,585	1,930	2,984	55,210	44,005	8,290	2,915
*Caddo	43,960	31,578	9,131	336	1,340	1,575	34,433	25,377	6,779	235	993	1,049	28,435	21,596	5,763	1,076
Caldwell	9,645	7,646	1,632	51	150	166	7,478	5,969	1,224	46	116	123	6,031	5,124	818	89
Catahoula	8,906	5,776	2,395	46	119	570	6,951	4,557	1,736	33	87	538	6,467	4,639	1,770	58
*Claiborne	8,638	5,338	2,923	51	120	206	7,261	4,682	2,285	28	91	175	4,805	3,190	1,543	72
Concordia	18,687	10,275	7,725	122	233	332	14,217	8,108	5,613	100	167	229	11,964	7,222	4,540	202
*De Soto	13,981	10,897	2,116	52	456	460	10,574	8,341	1,569	36	346	282	9,984	8,146	1,526	312
Grant	22,169	17,709	3,335	133	644	348	17,527	13,964	2,717	97	507	242	12,688	11,174	1,176	338
*Jackson	10,449	7,970	1,805	138	157	379	8,219	6,394	1,283	118	109	315	6,143	5,148	875	120
La Salle	14,791	11,348	1,422	283	372	1,366	11,563	8,636	1,065	264	271	1,327	8,792	7,978	637	177

Splits

Plan: SCA SB7-87

	Total Population	Total White	Total Black	Total Asian	Total American Indian	Total Other	VAP Total	VAP White	VAP Black	VAP Asian	VAP American Indian	VAP Other	Reg Total Dec 2021	Reg White Dec 2021	Reg Black Dec 2021	Reg Other Dec 2021
District 4																
*Lincoln	27,482	20,807	4,618	626	461	970	22,115	16,975	3,630	507	366	637	15,495	12,901	2,043	551
*Morehouse	8,679	6,666	1,625	59	193	136	6,944	5,392	1,262	40	133	117	6,376	5,007	1,250	119
*Natchitoches	23,550	16,115	5,697	187	706	845	18,549	13,043	4,165	137	564	640	15,842	11,582	3,488	772
Rapides	130,023	77,510	42,592	2,428	3,102	4,391	98,792	61,373	30,205	1,786	2,334	3,094	80,176	52,832	23,775	3,569
*Red River	3,771	3,067	514	10	118	62	2,890	2,425	339	2	75	49	2,670	2,316	314	40
Sabine	22,155	15,036	3,861	94	2,723	441	17,064	12,054	2,655	66	1,970	319	14,547	11,023	2,184	1,340
Union	21,107	14,460	5,224	62	338	1,023	16,632	11,807	3,861	39	254	671	15,221	11,066	3,692	463
Vernon	48,750	35,087	7,611	1,442	1,600	3,010	36,261	26,765	5,133	1,074	1,160	2,129	24,060	19,182	3,011	1,867
*Webster	17,703	12,953	3,994	103	341	312	13,759	10,273	2,919	79	270	218	10,897	8,453	2,240	204
West Carroll	9,751	7,894	1,425	27	180	225	7,532	6,223	1,010	20	136	143	7,038	5,913	1,040	85
Winn	13,755	8,594	3,727	210	263	961	10,906	6,932	2,695	170	207	902	8,406	5,988	2,292	126
District 4	575,569	397,800	130,248	8,849	16,301	22,371	442,765	313,610	94,285	6,486	12,164	16,220	354,500	266,982	72,992	14,526
	100.000%	69.114%	22.629%	1.537%	2.832%	3.887%	100.000%	70.830%	21.295%	1.465%	2.747%	3.663%	80.065%	75.312%	20.590%	4.098%
District 5																
*Bienville	8,067	3,245	4,601	14	98	109	6,316	2,664	3,488	6	84	74	5,594	2,346	3,192	56
*Bossier	36,043	13,683	16,674	1,146	697	3,843	26,535	11,433	11,096	863	547	2,596	14,533	6,856	6,548	1,129
*Caddo	193,888	71,879	110,173	3,698	2,500	5,638	147,974	59,682	79,580	2,773	1,965	3,974	122,861	51,517	65,486	5,858
*Claiborne	5,532	1,925	3,437	37	65	68	4,246	1,576	2,539	27	49	55	3,793	1,442	2,277	74
*De Soto	12,831	4,387	7,857	65	284	238	9,866	3,568	5,856	50	211	181	8,729	3,184	5,284	261
East Carroll	7,459	2,054	5,272	29	43	61	5,901	1,773	4,043	19	27	39	4,709	1,306	3,359	44
Franklin	19,774	12,492	6,802	70	205	205	15,028	9,901	4,779	44	153	151	13,159	9,015	4,034	110
*Jackson	4,582	1,997	2,361	37	98	89	3,564	1,573	1,842	22	65	62	3,306	1,499	1,735	72
*Lincoln	20,914	5,227	14,746	266	201	474	16,540	4,331	11,489	237	160	323	10,154	2,771	6,973	410
Madison	10,017	3,475	6,363	20	59	100	7,435	2,906	4,391	9	48	81	7,278	2,494	4,674	110
*Morehouse	16,950	5,615	10,859	101	177	198	13,118	4,703	8,038	77	146	154	10,546	3,498	6,881	167
*Natchitoches	13,965	3,246	10,028	68	155	468	10,800	2,967	7,250	61	119	403	7,265	1,268	5,736	261
Ouachita	160,368	88,545	61,217	2,788	2,661	5,157	120,200	69,974	42,290	2,118	2,059	3,759	99,752	60,515	35,658	3,579
*Red River	3,849	1,128	2,592	15	53	61	2,824	913	1,825	1	41	44	2,961	814	2,104	43
Richland	20,043	11,785	7,603	83	258	314	15,383	9,338	5,546	66	203	230	13,662	8,470	4,961	231
Tensas	4,147	1,744	2,312	23	26	42	3,235	1,446	1,728	12	23	26	3,455	1,503	1,917	35
*Webster	19,264	9,782	8,685	105	346	346	14,994	7,871	6,545	75	288	215	11,840	6,485	5,099	256
District 5	557,693	242,209	281,582	8,565	7,926	17,411	423,959	196,619	202,325	6,460	6,188	12,367	343,597	164,983	165,918	12,696
	100.000%	43.431%	50.491%	1.536%	1.421%	3.122%	100.000%	46.377%	47.723%	1.524%	1.460%	2.917%	81.045%	48.016%	48.289%	3.695%
District 6																
Assumption	21,039	13,722	6,220	96	258	743	16,616	11,145	4,707	57	197	510	14,439	9,700	4,510	229

Splits

Plan: SCA SB7-87

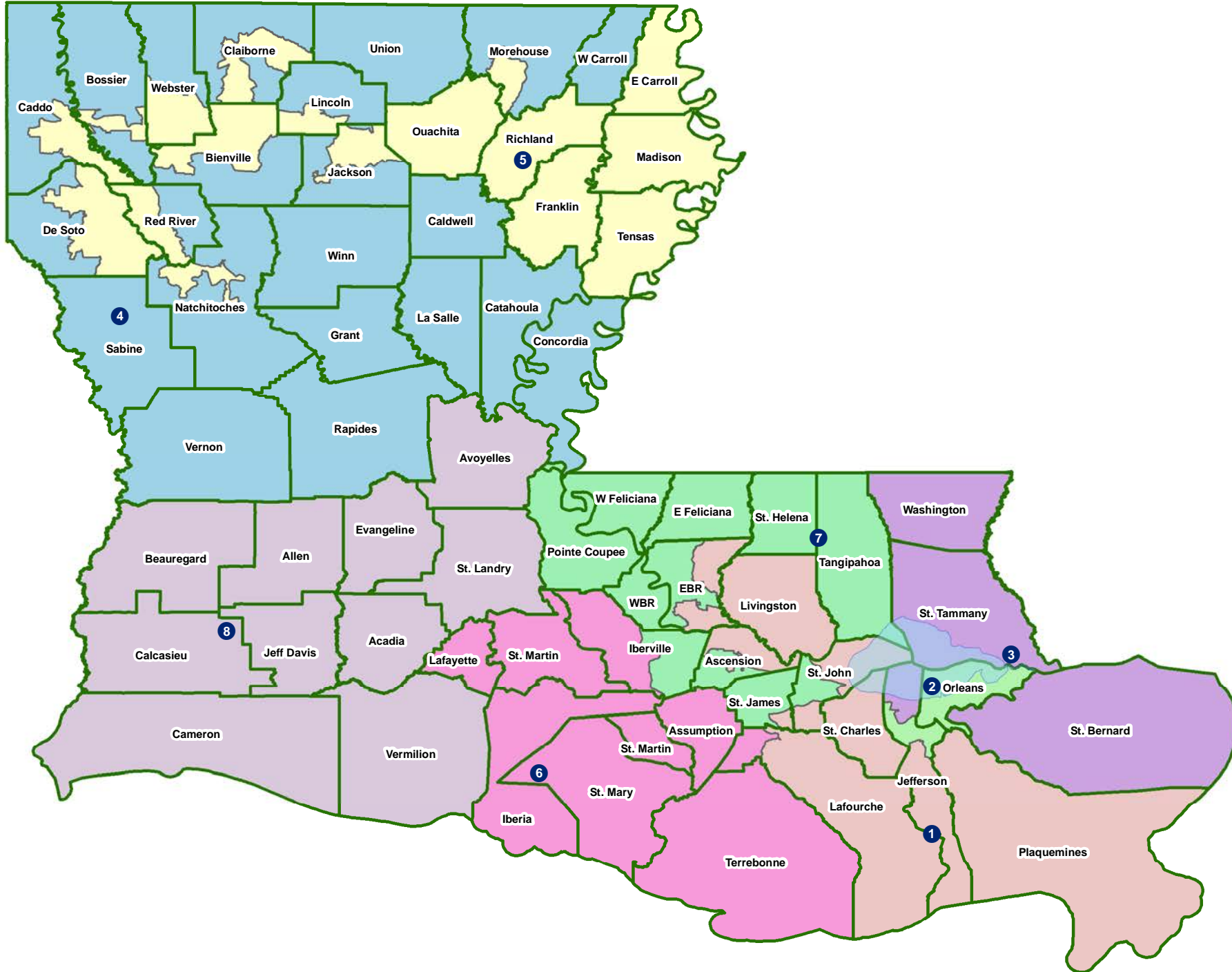
	Total Population	Total White	Total Black	Total Asian	Total American Indian	Total Other	VAP Total	VAP White	VAP Black	VAP Asian	VAP American Indian	VAP Other	Reg Total Dec 2021	Reg White Dec 2021	Reg Black Dec 2021	Reg Other Dec 2021
District 6																
Iberia	69,929	39,206	24,556	2,123	794	3,250	52,791	31,295	17,069	1,562	581	2,284	44,526	28,287	14,352	1,887
*Iberville	6,998	4,761	2,003	19	99	116	5,667	3,899	1,579	14	79	96	5,449	3,610	1,756	83
Lafayette	241,753	153,363	65,136	6,454	3,210	13,590	183,875	121,608	45,917	4,664	2,387	9,299	153,493	108,645	36,481	8,367
*Lafourche	32,313	20,300	9,963	359	517	1,174	24,970	16,247	7,279	266	347	831	18,973	13,955	4,431	587
St. Martin	51,767	33,259	15,921	597	539	1,451	39,404	26,278	11,293	407	413	1,013	35,120	23,934	10,381	805
St. Mary	49,406	26,949	15,991	835	1,670	3,961	37,521	21,594	11,520	593	1,173	2,641	30,210	18,712	9,891	1,607
Terrebonne	109,580	69,934	23,147	1,743	8,637	6,119	82,505	55,631	15,796	1,239	5,750	4,089	61,720	45,395	11,566	4,759
District 6	582,785	361,494	162,937	12,226	15,724	30,404	443,349	287,697	115,160	8,802	10,927	20,763	363,930	252,238	93,368	18,324
	100.000%	62.029%	27.958%	2.098%	2.698%	5.217%	100.000%	64.892%	25.975%	1.985%	2.465%	4.683%	82.087%	69.309%	25.655%	5.035%
District 7																
*Ascension	25,368	7,731	15,485	193	281	1,678	18,685	6,315	10,898	145	200	1,127	16,153	5,694	9,778	681
*East Baton Rouge	257,428	58,738	174,403	7,297	1,946	15,044	196,248	50,586	127,958	5,754	1,555	10,395	147,427	36,464	103,239	7,724
East Feliciana	19,539	11,516	7,341	91	262	329	16,183	9,740	5,918	61	198	266	13,600	7,959	5,186	455
*Iberville	23,243	10,072	11,727	183	175	1,086	18,419	8,563	8,653	135	142	926	15,013	6,522	8,141	350
Pointe Coupee	20,758	12,395	7,504	107	159	593	16,250	10,108	5,502	91	119	430	14,675	9,320	5,121	234
St. Helena	10,920	4,527	6,031	39	134	189	8,463	3,805	4,371	28	109	150	8,321	3,628	4,565	128
*St. James	16,789	7,811	8,630	51	59	238	12,780	6,121	6,409	24	47	179	12,396	5,650	6,577	169
*St. John the Baptist	39,200	12,073	24,151	382	393	2,201	29,911	10,073	17,676	305	299	1,558	26,725	8,763	16,625	1,337
Tangipahoa	133,157	81,336	41,879	1,474	2,454	6,014	101,491	65,205	29,217	1,100	1,827	4,142	76,256	52,912	20,525	2,819
West Baton Rouge	27,199	14,307	11,170	287	326	1,109	20,526	11,146	8,149	209	219	803	17,141	9,937	6,865	339
West Feliciana	15,310	10,883	3,740	89	225	373	12,783	9,283	2,951	56	174	319	7,407	5,092	2,180	135
District 7	588,911	231,389	312,061	10,193	6,414	28,854	451,739	190,945	227,702	7,908	4,889	20,295	355,114	151,941	188,802	14,371
	100.000%	39.291%	52.990%	1.731%	1.089%	4.900%	100.000%	42.269%	50.406%	1.751%	1.082%	4.493%	78.610%	42.787%	53.167%	4.047%
District 8																
Acadia	57,576	44,480	10,864	238	573	1,421	42,943	34,071	7,383	173	400	916	37,678	30,555	6,407	716
Allen	22,750	16,327	4,490	246	947	740	17,510	12,751	3,275	182	646	656	12,201	9,478	2,217	506
Avoyelles	39,693	25,625	11,678	434	767	1,189	30,578	20,269	8,311	379	570	1,049	23,426	16,534	6,294	598
Beauregard	36,549	29,529	4,649	402	1,052	917	27,489	22,304	3,495	269	773	648	22,294	18,771	2,369	1,154
Calcasieu	216,785	139,772	59,386	4,702	3,536	9,389	163,166	108,789	41,898	3,359	2,604	6,516	120,511	85,659	29,513	5,339
Cameron	5,617	5,232	125	30	75	155	4,358	4,100	79	23	47	109	4,789	4,610	88	91
Evangeline	32,350	21,354	9,235	241	280	1,240	24,408	16,460	6,483	187	217	1,061	20,553	14,566	5,643	344
Jefferson Davis	32,250	25,066	5,837	183	472	692	24,039	19,121	4,006	111	325	476	20,013	16,350	3,202	461
St. Landry	82,540	43,611	35,836	499	636	1,958	61,811	34,209	25,497	353	451	1,301	54,482	30,093	23,005	1,384
Vermilion	57,359	44,477	8,810	1,447	623	2,002	43,012	34,363	5,787	1,037	488	1,337	36,769	30,505	4,994	1,270

Splits

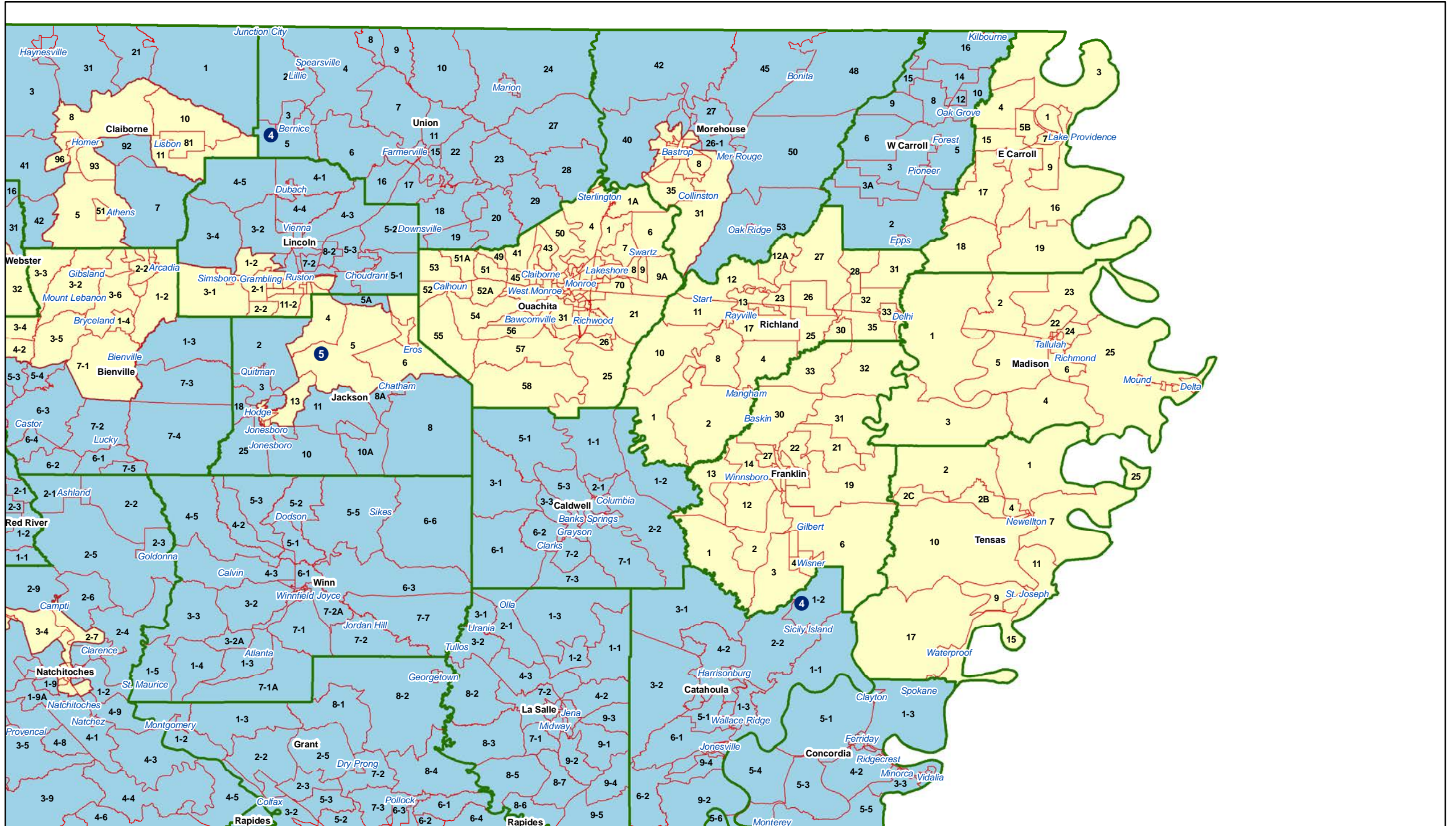
Plan: SCA SB7-87

	Total Population	Total White	Total Black	Total Asian	Total American Indian	Total Other	VAP Total	VAP White	VAP Black	VAP Asian	VAP American Indian	VAP Other	Reg Total Dec 2021	Reg White Dec 2021	Reg Black Dec 2021	Reg Other Dec 2021
District 8	583,469 100.000%	395,473 67.780%	150,910 25.864%	8,422 1.443%	8,961 1.536%	19,703 3.377%	439,314 100.000%	306,437 69.754%	106,214 24.177%	6,073 1.382%	6,521 1.484%	14,069 3.202%	352,716 80.288%	257,121 72.897%	83,732 23.739%	11,863 3.363%

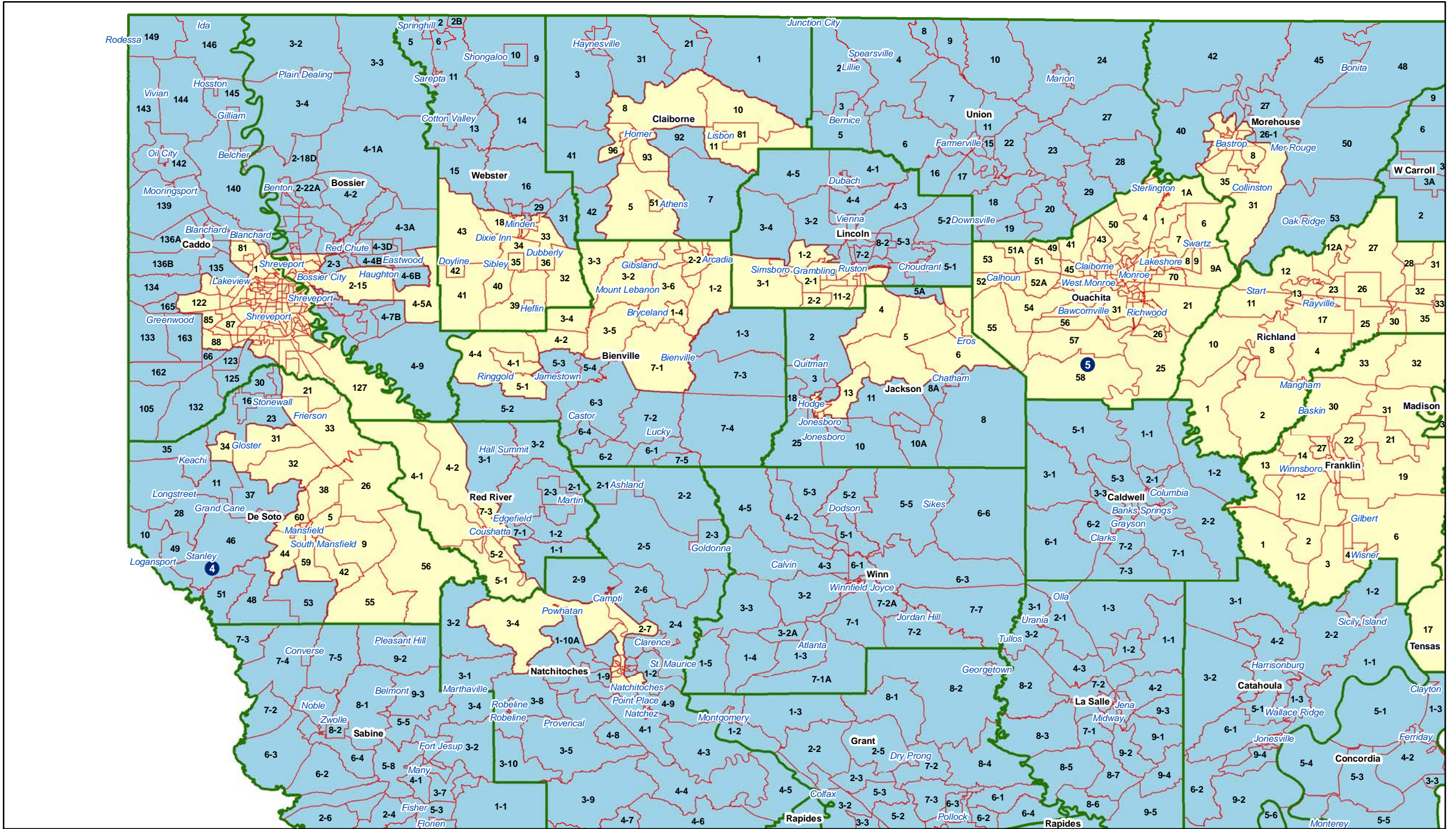
BESE



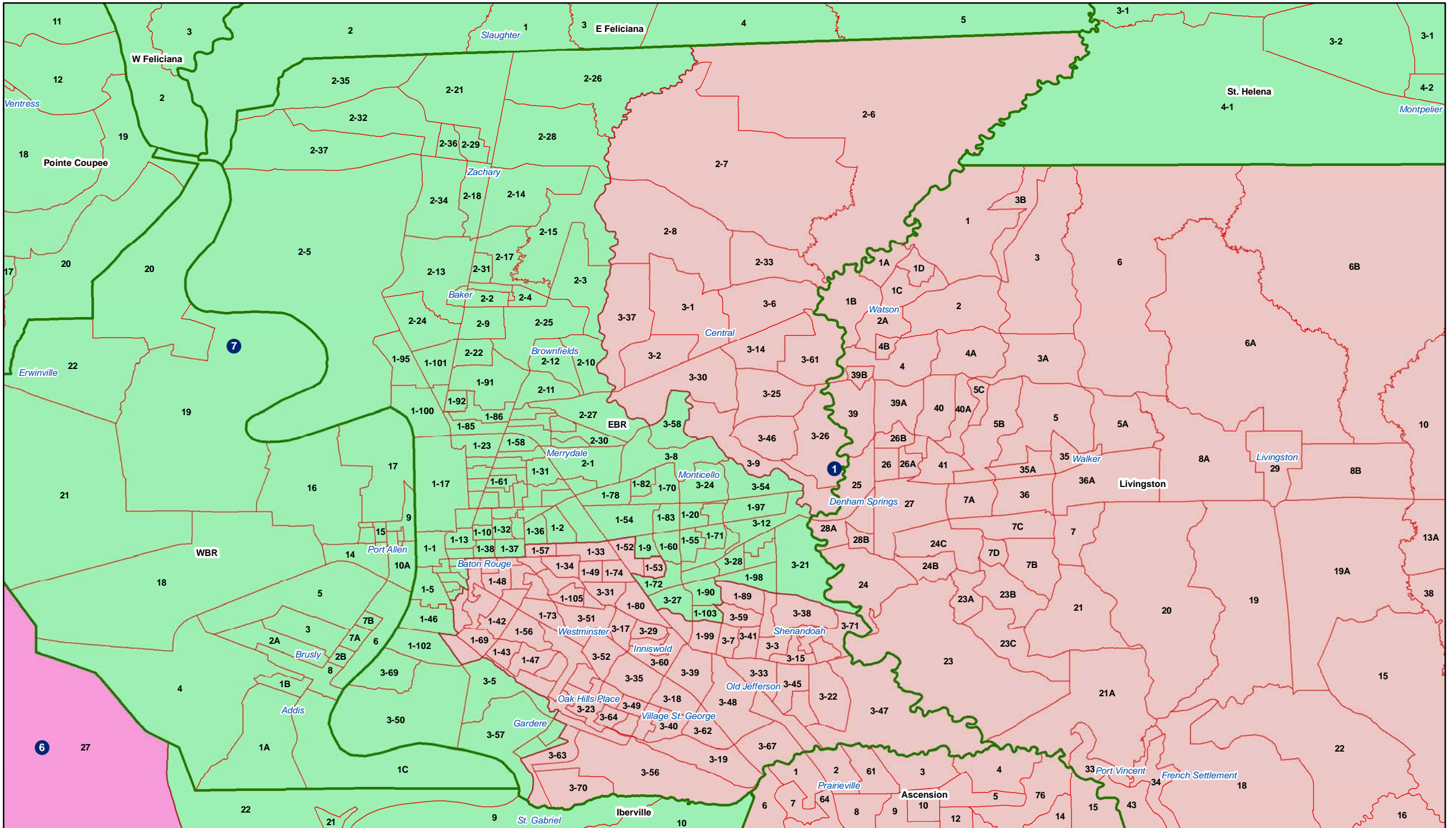
BESE - Northeast



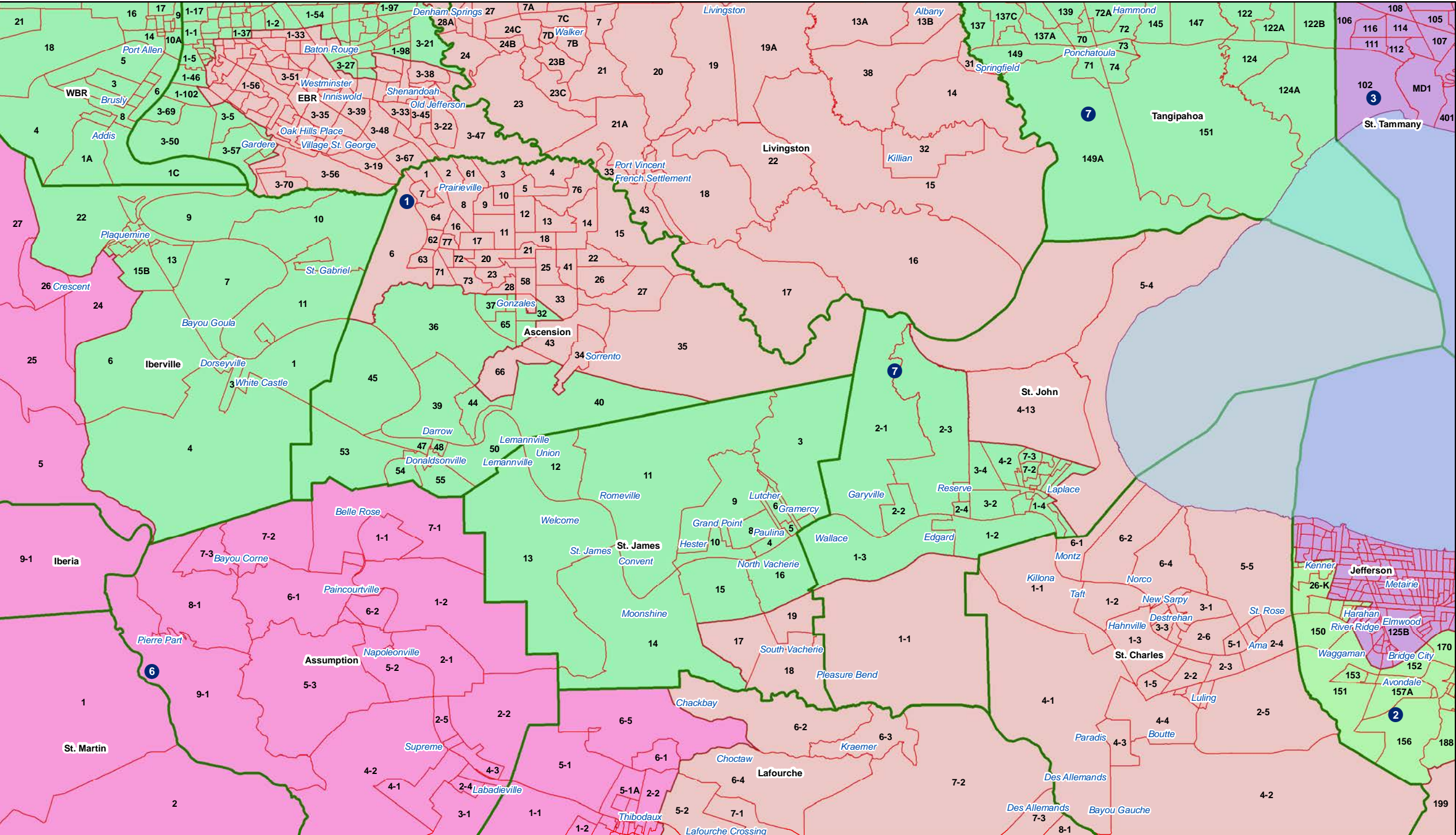
BESE - Northwest



BESE - Baton Rouge



BESE - River



BESE - Jefferson-Orleans

