

**SENATE COMMITTEE AMENDMENTS**

2022 First Extraordinary Session

Amendments proposed by Senate Committee on Senate and Governmental Affairs to Original Senate Bill No. 15 by Senator Hewitt

1 AMENDMENT NO. 1

2 On page 1, delete lines 13 through 17

3 AMENDMENT NO. 2

4 Delete pages 2 through 5

5 AMENDMENT NO. 3

6 On page 6, delete lines 1 through 5, and insert:

7 "(1) District 1 is composed of Precincts 1, 2, 3, 4, 5, 7, 8, 9, 10, 11, 12, 13,  
 8 14, 15, 16, 17, 18, 19, 20, 21, 22, 23, 24, 25, 26, 27, 28, 29, 30, 31, 32, 33, 34, 35, 36,  
 9 37, 38, 39, 40, 41, 42, 43, 44, 45, 46, 51, 52, 53, 54, 55, 56, 57, 58, 59, 60, 61, 62, 63,  
 10 64, 65, 66, 67, 68, 69, 70, 71, 72, 73, 74, 75, 76, 77, 78, 79, 80, 81, 82, 83, 84, 85, 86,  
 11 87, 88, 89, 90, 91, 92, 93, 94, 95, 96, 97, 98, 99, 100, 101, 102, 103, 105, 106, 118,  
 12 119, 120, 121, 122, 123, 124, 125A, 125B, 126, 127, 128, 1-H, 2-H, 3-H, 4-H, 5-H,  
 13 6-H, 7-H, 8-H, 9-H, 1-K, 2-K, 3-K, 4-K, 5-K, 6-KA, 6-KB, 7-KA, 7-KB, 8-K, 9-K,  
 14 10-K, 11-K, 12-K, 13-KA, 14-K, 15-K, 16-K, 17-K, 18-K, 19-K, 20-K, 25-K,  
 15 27-K, 28-K, 29-K, 34-K and 35-K of Jefferson Parish; Precincts 13A, 13B, 14,  
 16 15, 16, 19A, 31, 32 and 38 of Livingston Parish; Precincts 4-9, 4-11, 4-14, 4-15,  
 17 4-17, 4-17A, 4-18, 4-20, 4-21, 4-22, 4-23, 5-12, 5-13, 5-15, 5-16, 5-17, 5-18, 7-41,  
 18 7-42, 9-45, 9-45A, 17-17, 17-18, 17-18A, 17-19 and 17-20 of Orleans Parish;  
 19 Precincts 1-6, 3-1, 3-2, 3-3, 5-5, 6-1, 6-2, 6-4, 6-6, 6-7 and 6-8 of St. Charles  
 20 Parish; Precincts 4-13 and 5-4 of St. John the Baptist Parish; St. Tammany  
 21 Parish; Precincts 44, 70, 70A, 71, 72, 72A, 73, 74, 104A, 106A, 108, 110, 112, 114,  
 22 116, 118, 119, 120, 120A, 120B, 122, 122A, 122B, 123, 124, 124A, 137, 137A,  
 23 137B, 137C, 137D, 139, 141, 141A, 143, 143A, 145, 147, 149, 149A and 151 of  
 24 Tangipahoa Parish and Washington Parish.

25 (2) District 2 is composed of Bienville Parish; Bossier Parish; Caddo  
 26 Parish; Catahoula Parish; Claiborne Parish; De Soto Parish; East Carroll  
 27 Parish; Franklin Parish; Lincoln Parish; Madison Parish; Morehouse Parish;  
 28 Precincts 1, 1A, 2, 3, 4, 5, 6, 7, 8, 9, 50, 66, 67, 68, 72, 73, 75 and 76 of Ouachita  
 29 Parish; Richland Parish; Union Parish; Webster Parish and West Carroll  
 30 Parish.

31 (3) District 3 is composed of Precincts 260, 300, 301, 302, 303, 304, 305,  
 32 306, 307, 308, 309E, 309W, 310, 311, 312, 313E, 313W, 314, 315E, 315W, 316E,  
 33 316W, 317, 318, 319N, 319S, 320E, 320W, 321, 322, 323, 324, 325, 326, 327, 328,  
 34 329, 330, 331, 332N, 332S, 333, 334, 335, 336, 337, 338, 339, 340, 361, 362, 363,  
 35 364, 365, 366, 367, 368, 369, 370, 371N, 371S, 372, 401, 402, 403, 404, 405, 406,  
 36 407, 408, 465, 466E, 466W, 467, 468, 469, 700, 701, 702, 703, 760, 761, 762, 800,  
 37 801, 860S, 861E and 861W of Calcasieu Parish; Cameron Parish; Iberia Parish;  
 38 Precincts 3, 8, 9, 10, 25, 26, 27, 28, 29, 30, 31, 32, 33, 34, 35, 36, 37, 38, 39, 40, 41,  
 39 42, 43, 44, 45, 46, 47, 48, 49, 65, 66, 67, 69, 70, 71, 72, 73, 74, 75, 76, 77, 78, 79, 80,  
 40 81, 82, 83, 84, 85, 86, 87, 88, 89, 90, 91, 92, 93, 94, 95, 96, 97, 98, 99, 100, 101, 102,  
 41 103, 104, 105, 106, 107, 108, 109, 110, 111, 113, 114, 115, 116, 117, 118, 119, 120,  
 42 121, 124, 125, 126, 127 and 128 of Lafayette Parish; Precincts 16, 39 and 40 of  
 43 St. Landry Parish; St. Martin Parish; St. Mary Parish; Precincts 13, 14, 15, 16,  
 44 18, 19, 20, 21, 23, 25, 29, 31, 32, 34, 35, 36, 38, 41, 43, 45, 46, 48, 49, 51, 52, 53, 54,  
 45 55, 56, 57, 58, 59, 60, 61, 63, 64, 65, 67, 68, 69, 71, 72, 73, 74, 82, 83, 84, 85, 86, 87,  
 46 88, 89, 90, 110 and 111 of Terrebonne Parish and Vermilion Parish.

47 (4) District 4 is composed of Precincts 2-5E, 3-1, 3-3, 6-1A, 6-2, 6-2A, 7-1,  
 48 7-3, 7-3B, 8-1, 8-2A, 8-2B, 8-3, 8-3A, 9-1A, 9-2, 9-2A, 9-3, 9-5B, 10-2, 10-2A,

1 10-3A, 10-4, 11-1 and 11-2A of Avoyelles Parish; Concordia Parish; Precincts  
 2 1-1, 1-2, 1-3, 1-4, 1-5, 1-6, 1-7, 1-8, 1-10, 1-11, 1-12, 1-13, 1-14, 1-15, 1-16, 1-17,  
 3 1-18, 1-19, 1-20, 1-21, 1-22, 1-23, 1-24, 1-25, 1-26, 1-27, 1-28, 1-29, 1-30, 1-31,  
 4 1-32, 1-36, 1-37, 1-38, 1-39, 1-40, 1-41, 1-42, 1-43, 1-44, 1-45, 1-46, 1-47, 1-48,  
 5 1-50, 1-51, 1-54, 1-55, 1-56, 1-57, 1-58, 1-59, 1-61, 1-62, 1-63, 1-64, 1-65, 1-66,  
 6 1-67, 1-68, 1-69, 1-70, 1-71, 1-73, 1-75, 1-76, 1-77, 1-78, 1-82, 1-83, 1-84, 1-85,  
 7 1-86, 1-87, 1-88, 1-91, 1-92, 1-93, 1-94, 1-95, 1-97, 1-100, 1-101, 1-102, 1-104,  
 8 1-107, 2-1, 2-2, 2-3, 2-4, 2-5, 2-9, 2-10, 2-11, 2-12, 2-13, 2-14, 2-15, 2-16, 2-17,  
 9 2-18, 2-19, 2-20, 2-21, 2-22, 2-23, 2-24, 2-25, 2-26, 2-27, 2-28, 2-29, 2-30, 2-31,  
 10 2-32, 2-34, 2-35, 2-36, 2-37, 3-5, 3-8, 3-12, 3-20, 3-23, 3-24, 3-44, 3-50, 3-54, 3-55,  
 11 3-57, 3-63 and 3-69 of East Baton Rouge Parish; East Feliciana Parish; Iberville  
 12 Parish; Precincts 1, 2, 4, 5, 6, 7, 11, 12, 13, 14, 15, 16, 17, 18, 19, 20, 21, 22, 23,  
 13 24, 51, 52, 53, 54, 55, 56, 57, 58, 59, 60, 61, 62, 63, 64, 68, 112, 122 and 123 of  
 14 Lafayette Parish; Pointe Coupee Parish; St. Helena Parish; Precincts 1, 2, 3, 4,  
 15 5, 6, 7, 7A, 8, 9, 10, 11, 12, 13, 14, 15, 17, 18, 19, 20, 21, 22, 23, 24, 25, 26, 27, 28,  
 16 29, 30, 31, 32, 33, 34, 35, 36, 37, 38, 41, 42, 43, 44, 45, 46, 47, 48, 49, 50, 51 and  
 17 52 of St. Landry Parish; Precincts 1, 2, 6, 11, 15, 16, 17, 18, 26, 27, 28, 33, 40,  
 18 40A, 41, 42, 42A, 43, 45, 45A, 46, 47, 48, 49, 101, 102, 104, 105, 106, 107, 109,  
 19 111A, 115B, 117, 121, 121A, 125, 127, 127A, 129, 129A, 133 and 133A of  
 20 Tangipahoa Parish; Tensas Parish; West Baton Rouge Parish and West  
 21 Feliciana Parish.

22 (5) District 5 is composed of Acadia Parish; Allen Parish; Precincts 1-1,  
 23 1-2, 1-3, 2-1, 2-2, 2-2A, 2-2B, 2-2C, 2-2D, 2-2F, 2-3A, 2-4, 2-4A, 2-5, 2-7, 2-8,  
 24 3-1B, 4-1, 4-2, 4-2A, 5-1, 5-1A, 9-4 and 9-4B of Avoyelles Parish; Beauregard  
 25 Parish; Precincts 160E, 160W, 161, 162E, 162W, 163, 164, 165, 166E, 166W,  
 26 167, 261, 262, 360, 400, 440, 441, 460E, 460W, 461, 463, 464, 560, 561, 562, 600,  
 27 601, 602, 603, 660, 661, 662, 663, 664 and 860N of Calcasieu Parish; Caldwell  
 28 Parish; Evangeline Parish; Grant Parish; Jackson Parish; Jefferson Davis  
 29 Parish; La Salle Parish; Natchitoches Parish; Precincts 9A, 10, 11, 12, 13, 14, 15,  
 30 16, 17, 18, 19, 20, 21, 22, 23, 24, 25, 26, 27, 27A, 28, 29, 30, 31, 32, 33, 34, 35, 36,  
 31 37, 38, 39, 40, 41, 42, 43, 44, 44A, 45, 46, 47, 48, 49, 51, 51A, 52, 52A, 53, 54, 55,  
 32 56, 56A, 57, 58, 59, 60, 61, 62, 63, 64, 65, 65A, 69, 70, 71, 74, 77, 78 and 79 of  
 33 Ouachita Parish; Rapides Parish; Red River Parish; Sabine Parish; Vernon  
 34 Parish and Winn Parish.

35 (6) District 6 is composed of Ascension Parish; Assumption Parish;  
 36 Precincts 1-9, 1-33, 1-34, 1-35, 1-49, 1-52, 1-53, 1-60, 1-72, 1-74, 1-79, 1-80, 1-81,  
 37 1-89, 1-90, 1-98, 1-99, 1-103, 1-105, 2-6, 2-7, 2-8, 2-33, 3-1, 3-2, 3-3, 3-4, 3-6, 3-7,  
 38 3-9, 3-10, 3-11, 3-13, 3-14, 3-15, 3-16, 3-17, 3-18, 3-19, 3-21, 3-22, 3-25, 3-26, 3-27,  
 39 3-28, 3-29, 3-30, 3-31, 3-32, 3-33, 3-34, 3-35, 3-36, 3-37, 3-38, 3-39, 3-40, 3-41,  
 40 3-43, 3-45, 3-46, 3-47, 3-48, 3-49, 3-51, 3-52, 3-53, 3-56, 3-58, 3-59, 3-60, 3-61,  
 41 3-62, 3-64, 3-65, 3-66, 3-67, 3-68, 3-70, 3-71 and 3-72 of East Baton Rouge  
 42 Parish; Precincts 198, 199, 246, 247, 248, 1-GI and 1-L of Jefferson Parish;  
 43 Lafourche Parish; Precincts 1, 1A, 1B, 1C, 1D, 2, 2A, 3, 3A, 3B, 4, 4A, 4B, 5, 5A,  
 44 5B, 5C, 6, 6A, 6B, 7, 7A, 7B, 7C, 7D, 8A, 8B, 9, 10, 11, 11A, 12, 17, 18, 18A, 19,  
 45 20, 21, 21A, 22, 23, 23A, 23B, 23C, 24, 24B, 24C, 25, 26, 26A, 26B, 26C, 27, 28A,  
 46 28B, 29, 30, 33, 34, 35, 35A, 36, 36A, 39, 39A, 39B, 40, 40A, 41 and 43 of  
 47 Livingston Parish; Plaquemines Parish; St. Bernard Parish and Precincts 1, 4,  
 48 5, 7, 8, 9, 10, 11, 12, 17, 27 and 76 of Terrebonne Parish.

49 (7) District 7 is composed of Precincts 104, 108, 115, 116, 117, 129, 130,  
 50 131, 132, 133, 134, 136, 138, 150, 151, 152, 153, 154, 155, 156, 157A, 157B, 170,  
 51 171, 172, 173, 174, 175, 176, 177, 178, 179A, 179B, 180, 181, 182, 183, 184, 185A,  
 52 185B, 187, 188, 189, 190, 191, 192, 193A, 193B, 194A, 194B, 195, 196, 197A,  
 53 197B, 200, 201, 202, 203, 204, 205, 210, 211, 212, 213A, 213B, 213C, 214A, 214B,  
 54 215, 216A, 216B, 216C, 217, 225, 226, 227, 228, 229, 230, 231, 232A, 232B, 234,  
 55 235, 236, 237, 238A, 238B, 1-G, 2-G, 3-G, 4-G, 5-G, 6-G, 7-G, 8-G, 9-G, 10-G,  
 56 11-G, 12-G, 13-G, 13-KB, 21-K, 22-K, 23-K, 24-K, 26-K, 30-K, 31-K, 33-K, 1-W,  
 57 2-W, 3-W, 4-W, 5-W, 6-W and 7-W of Jefferson Parish; Precincts 1-1, 1-2, 1-5,  
 58 1-6, 2-1, 2-2, 2-4, 2-6, 2-7, 3-1, 3-8, 3-9, 3-12, 3-14, 3-15, 3-18, 3-19, 3-20, 4-2, 4-3,  
 59 4-5, 4-6, 4-7, 4-8, 5-1, 5-2, 5-3, 5-5, 5-7, 5-8, 5-9, 5-10, 5-11, 6-1, 6-2, 6-4, 6-6, 6-7,  
 60 6-8, 6-9, 7-1, 7-2, 7-4, 7-5, 7-6, 7-7, 7-8, 7-9A, 7-10, 7-11, 7-12, 7-13, 7-14, 7-15,  
 61 7-16, 7-17, 7-18, 7-19, 7-20, 7-21, 7-23, 7-24, 7-25, 7-25A, 7-26, 7-27, 7-27B, 7-28,

1 7-28A, 7-29, 7-30, 7-32, 7-33, 7-35, 7-37, 7-37A, 7-40, 8-1, 8-2, 8-4, 8-6, 8-7, 8-8,  
 2 8-9, 8-12, 8-13, 8-14, 8-15, 8-19, 8-20, 8-21, 8-22, 8-23, 8-24, 8-25, 8-26, 8-27, 8-28,  
 3 8-30, 9-1, 9-3, 9-4, 9-5, 9-6, 9-7, 9-8, 9-9, 9-10, 9-11, 9-12, 9-13, 9-14, 9-15, 9-16,  
 4 9-17, 9-19, 9-21, 9-23, 9-25, 9-26, 9-28, 9-28C, 9-29, 9-30, 9-30A, 9-31, 9-31A,  
 5 9-31B, 9-31D, 9-32, 9-33, 9-34A, 9-35, 9-35A, 9-36, 9-36B, 9-37, 9-38, 9-38A,  
 6 9-39, 9-39B, 9-40, 9-40A, 9-40C, 9-41, 9-41A, 9-41B, 9-41C, 9-41D, 9-42, 9-42C,  
 7 9-43A, 9-43B, 9-43C, 9-43E, 9-43F, 9-43G, 9-43H, 9-43I, 9-43J, 9-43K, 9-43L,  
 8 9-43M, 9-43N, 9-44, 9-44A, 9-44B, 9-44D, 9-44E, 9-44F, 9-44G, 9-44I, 9-44J,  
 9 9-44L, 9-44M, 9-44N, 9-44O, 9-44P, 9-44Q, 10-3, 10-6, 10-7, 10-8, 10-9, 10-11,  
 10 10-12, 10-13, 10-14, 11-2, 11-3, 11-4, 11-5, 11-8, 11-9, 11-10, 11-11, 11-12, 11-13,  
 11 11-14, 11-17, 12-1, 12-2, 12-3, 12-4, 12-5, 12-6, 12-7, 12-8, 12-9, 12-10, 12-11,  
 12 12-12, 12-13, 12-14, 12-16, 12-17, 12-19, 13-1, 13-2, 13-3, 13-4, 13-5, 13-6, 13-7,  
 13 13-8, 13-9, 13-10, 13-11, 13-12, 13-13, 13-14, 13-15, 13-16, 14-1, 14-2, 14-3, 14-4,  
 14 14-5, 14-6, 14-7, 14-8, 14-9, 14-10, 14-11, 14-12, 14-13A, 14-14, 14-15, 14-16,  
 15 14-17, 14-18A, 14-19, 14-20, 14-21, 14-23, 14-24A, 14-25, 14-26, 15-1, 15-2, 15-3,  
 16 15-5, 15-6, 15-8, 15-9, 15-10, 15-11, 15-12, 15-12A, 15-13, 15-13A, 15-13B, 15-14,  
 17 15-14A, 15-14B, 15-14C, 15-14D, 15-14E, 15-14F, 15-14G, 15-15, 15-15A,  
 18 15-15B, 15-16, 15-17, 15-17A, 15-17B, 15-18, 15-18A, 15-18B, 15-18C, 15-18D,  
 19 15-18E, 15-18F, 15-19, 15-19A, 15-19B, 15-19C, 16-1, 16-1A, 16-2, 16-3, 16-4,  
 20 16-5, 16-6, 16-7, 16-8, 16-9, 17-1, 17-2, 17-3, 17-4, 17-5, 17-6, 17-7, 17-8, 17-9,  
 21 17-10, 17-11, 17-12, 17-13, 17-13A, 17-14, 17-15 and 17-16 of Orleans Parish;  
 22 Precincts 1-1, 1-2, 1-3, 1-5, 2-1, 2-2, 2-3, 2-4, 2-5, 2-6, 4-1, 4-2, 4-3, 4-4, 5-1, 5-3,  
 23 5-4, 7-1, 7-2, 7-3 and 7-4 of St. Charles Parish; St. James Parish and Precincts  
 24 1-1, 1-2, 1-3, 1-4, 1-5, 2-1, 2-2, 2-3, 2-4, 3-1, 3-2, 3-4, 4-1, 4-2, 4-3, 4-14, 5-1, 5-7,  
 25 5-8, 6-1, 6-3, 6-4, 7-2, 7-3, 7-5 and 7-7 of St. John the Baptist Parish."

# Plan Statistics

Plan: SCA SB15-123

<u>Districts:</u>	<u># of Members</u>	<u>Actual Population</u>	<u>Ideal Population</u>	<u>Absolute Deviation</u>	<u>Relative Deviation</u>
District 1	1	671,166	665,393	5,773	0.868%
District 2	1	670,839	665,393	5,446	0.818%
District 3	1	665,912	665,393	519	0.078%
District 4	1	632,347	665,393	-33,046	-4.966%
District 5	1	698,432	665,393	33,039	4.965%
District 6	1	663,776	665,393	-1,617	-0.243%
District 7	1	655,285	665,393	-10,108	-1.519%
<b>Grand Total:</b>	<b>7</b>	<b>4,657,757</b>	<b>4,657,751</b>		

Ideal Population Per Member:	665393		
Number of Districts for Plan Type:	7		
Range of District Populations:	632,347	to	698,432
Absolute Mean Deviation:	9,441		
Absolute Range:	-33,046	to	33,039
Absolute Overall Range:	66,085		
Relative Mean Deviation:	1.92%		
Relative Range:	-4.97%	to	4.97%
Relative Overall Range:	9.94%		

<b><i>Ideal - Actual:</i></b>	<b>-6</b>
<b><i>Remainder:</i></b>	<b>6</b>
<b><i>Unassigned Population:</i></b>	<b>0</b>

# Total Population

Plan: SCA SB15-123

	Total Population	Total White	Total Black	Total Asian	Total American Indian	Total Other	Total Hispanic	VAP Total	VAP White	VAP Black	VAP Asian	VAP American Indian	VAP Other	VAP Hispanic Total
District 1	671,166	472,516	102,238	19,690	12,863	63,859	77,541	521,403	379,447	72,172	14,431	9,570	45,783	54,444
	100.000%	70.402%	15.233%	2.934%	1.917%	9.515%	11.553%	100.000%	72.774%	13.842%	2.768%	1.835%	8.781%	10.442%
District 2	670,839	356,072	269,900	10,513	11,792	22,562	27,003	514,744	286,223	196,167	7,753	9,033	15,568	18,062
	100.000%	53.079%	40.233%	1.567%	1.758%	3.363%	4.025%	100.000%	55.605%	38.110%	1.506%	1.755%	3.024%	3.509%
District 3	665,912	431,389	167,167	16,552	16,207	34,597	40,842	504,408	340,612	116,591	11,965	11,469	23,771	27,387
	100.000%	64.782%	25.103%	2.486%	2.434%	5.195%	6.133%	100.000%	67.527%	23.114%	2.372%	2.274%	4.713%	5.430%
District 4	632,347	257,571	333,212	10,393	6,067	25,104	30,414	488,810	213,321	244,611	8,282	4,588	18,008	21,630
	100.000%	40.733%	52.694%	1.644%	0.959%	3.970%	4.810%	100.000%	43.641%	50.042%	1.694%	0.939%	3.684%	4.425%
District 5	698,432	471,645	176,809	8,804	17,045	24,129	30,326	529,065	367,343	124,546	6,498	12,588	18,090	22,135
	100.000%	67.529%	25.315%	1.261%	2.440%	3.455%	4.342%	100.000%	69.432%	23.541%	1.228%	2.379%	3.419%	4.184%
District 6	663,776	452,003	136,177	17,438	15,229	42,929	50,266	499,704	353,224	94,251	12,329	10,848	29,052	33,061
	100.000%	68.096%	20.516%	2.627%	2.294%	6.467%	7.573%	100.000%	70.687%	18.861%	2.467%	2.171%	5.814%	6.616%
District 7	655,285	216,456	357,616	23,898	7,857	49,458	66,157	512,414	184,341	267,431	19,158	6,144	35,340	46,943
	100.000%	33.032%	54.574%	3.647%	1.199%	7.548%	10.096%	100.000%	35.975%	52.190%	3.739%	1.199%	6.897%	9.161%
Grand Total	4,657,757	2,657,652	1,543,119	107,288	87,060	262,638	322,549	3,570,548	2,124,511	1,115,769	80,416	64,240	185,612	223,662
	100.000%	57.059%	33.130%	2.303%	1.869%	5.639%	6.925%	100.000%	59.501%	31.249%	2.252%	1.799%	5.198%	6.264%

# Voter Registration

Plan: SCA SB15-123

	Reg Total Dec 2021	Reg White Dec 2021	Reg Black Dec 2021	Reg Other Dec 2021	Reg Dem Total Dec 2021	Reg Rep Total Dec 2021	Reg Other Total Dec 2021
District 1	430,483	343,412	51,568	35,503	115,334	188,104	127,045
	82.562%	79.774%	11.979%	8.247%	26.792%	43.696%	29.512%
District 2	415,361	242,567	157,141	15,653	167,738	146,756	100,867
	80.693%	58.399%	37.832%	3.769%	40.384%	35.332%	24.284%
District 3	404,735	294,078	90,032	20,625	135,911	156,943	111,881
	80.240%	72.659%	22.245%	5.096%	33.580%	38.777%	27.643%
District 4	389,008	169,702	204,969	14,337	212,500	84,757	91,751
	79.583%	43.624%	52.690%	3.686%	54.626%	21.788%	23.586%
District 5	426,532	310,191	100,258	16,083	149,101	167,808	109,623
	80.620%	72.724%	23.505%	3.771%	34.957%	39.342%	25.701%
District 6	408,473	315,485	70,208	22,780	125,734	168,799	113,940
	81.743%	77.235%	17.188%	5.577%	30.781%	41.324%	27.894%
District 7	419,754	152,554	228,572	38,628	254,686	55,613	109,455
	81.917%	36.344%	54.454%	9.203%	60.675%	13.249%	26.076%
Grand Total	2,894,346	1,827,989	902,748	163,609	1,161,004	968,780	764,562

# Splits

Plan: SCA SB15-123

	Total Population	Total White	Total Black	Total Asian	Total American Indian	Total Other	VAP Total	VAP White	VAP Black	VAP Asian	VAP American Indian	VAP Other	Reg Total Dec 2021	Reg White Dec 2021	Reg Black Dec 2021	Reg Other Dec 2021
District 1																
*Jefferson	223,444	142,786	28,939	11,217	3,813	36,689	178,708	119,561	21,110	8,455	2,880	26,702	136,267	106,529	11,554	18,184
*Livingston	11,453	9,605	1,051	83	210	504	8,809	7,544	728	44	164	329	7,670	6,784	671	215
*Orleans	28,442	22,889	1,708	1,229	343	2,273	22,338	18,271	1,277	887	266	1,637	20,161	17,328	980	1,853
*St. Charles	19,250	13,391	3,525	334	332	1,668	14,480	10,472	2,422	218	231	1,137	12,814	9,828	2,132	854
*St. John the Baptist	3,052	1,616	1,026	21	64	325	2,406	1,392	745	18	44	207	2,068	1,338	609	121
St. Tammany	264,570	196,641	38,643	5,774	5,660	17,852	202,228	154,621	26,761	4,075	4,161	12,610	178,779	145,724	21,142	11,913
*Tangipahoa	75,492	55,645	13,912	816	1,705	3,414	57,483	43,843	9,397	580	1,263	2,400	45,137	37,046	6,378	1,713
Washington	45,463	29,943	13,434	216	736	1,134	34,951	23,743	9,732	154	561	761	27,587	18,835	8,102	650
District 1	671,166	472,516	102,238	19,690	12,863	63,859	521,403	379,447	72,172	14,431	9,570	45,783	430,483	343,412	51,568	35,503
	100.000%	70.402%	15.233%	2.934%	1.917%	9.515%	100.000%	72.774%	13.842%	2.768%	1.835%	8.781%	82.562%	79.774%	11.979%	8.247%
District 2																
Bienville	12,981	6,950	5,600	57	207	167	10,073	5,486	4,284	30	162	111	8,847	4,843	3,917	87
Bossier	128,746	81,052	32,551	3,492	3,273	8,378	95,876	62,931	22,440	2,448	2,477	5,580	69,743	50,861	14,838	4,044
Caddo	237,848	103,457	119,304	4,034	3,840	7,213	182,407	85,059	86,359	3,008	2,958	5,023	151,296	73,113	71,249	6,934
Catahoula	8,906	5,776	2,395	46	119	570	6,951	4,557	1,736	33	87	538	6,467	4,639	1,770	58
Claiborne	14,170	7,263	6,360	88	185	274	11,507	6,258	4,824	55	140	230	8,598	4,632	3,820	146
De Soto	26,812	15,284	9,973	117	740	698	20,440	11,909	7,425	86	557	463	18,713	11,330	6,810	573
East Carroll	7,459	2,054	5,272	29	43	61	5,901	1,773	4,043	19	27	39	4,709	1,306	3,359	44
Franklin	19,774	12,492	6,802	70	205	205	15,028	9,901	4,779	44	153	151	13,159	9,015	4,034	110
Lincoln	48,396	26,034	19,364	892	662	1,444	38,655	21,306	15,119	744	526	960	25,649	15,672	9,016	961
Madison	10,017	3,475	6,363	20	59	100	7,435	2,906	4,391	9	48	81	7,278	2,494	4,674	110
Morehouse	25,629	12,281	12,484	160	370	334	20,062	10,095	9,300	117	279	271	16,922	8,505	8,131	286
*Ouachita	42,233	23,080	16,501	1,128	626	898	32,109	18,530	11,586	881	468	644	25,322	15,770	8,491	1,061
Richland	20,043	11,785	7,603	83	258	314	15,383	9,338	5,546	66	203	230	13,662	8,470	4,961	231
Union	21,107	14,460	5,224	62	338	1,023	16,632	11,807	3,861	39	254	671	15,221	11,066	3,692	463
Webster	36,967	22,735	12,679	208	687	658	28,753	18,144	9,464	154	558	433	22,737	14,938	7,339	460
West Carroll	9,751	7,894	1,425	27	180	225	7,532	6,223	1,010	20	136	143	7,038	5,913	1,040	85
District 2	670,839	356,072	269,900	10,513	11,792	22,562	514,744	286,223	196,167	7,753	9,033	15,568	415,361	242,567	157,141	15,653
	100.000%	53.079%	40.233%	1.567%	1.758%	3.363%	100.000%	55.605%	38.110%	1.506%	1.755%	3.024%	80.693%	58.399%	37.832%	3.769%
District 3																
*Calcasieu	160,238	92,140	54,148	4,098	2,399	7,453	120,927	72,666	38,278	2,967	1,794	5,222	86,759	55,820	26,799	4,140
Cameron	5,617	5,232	125	30	75	155	4,358	4,100	79	23	47	109	4,789	4,610	88	91
Iberia	69,929	39,206	24,556	2,123	794	3,250	52,791	31,295	17,069	1,562	581	2,284	44,526	28,287	14,352	1,887
*Lafayette	181,537	131,480	29,853	5,953	2,701	11,550	138,403	103,682	20,407	4,322	2,048	7,944	114,928	93,624	14,535	6,769

# Splits

Plan: SCA SB15-123

	Total Population	Total White	Total Black	Total Asian	Total American Indian	Total Other	VAP Total	VAP White	VAP Black	VAP Asian	VAP American Indian	VAP Other	Reg Total Dec 2021	Reg White Dec 2021	Reg Black Dec 2021	Reg Other Dec 2021
District 3																
*St. Landry	4,176	3,671	409	10	27	59	3,189	2,875	259	7	16	32	2,679	2,472	138	69
St. Martin	51,767	33,259	15,921	597	539	1,451	39,404	26,278	11,293	407	413	1,013	35,120	23,934	10,381	805
St. Mary	49,406	26,949	15,991	835	1,670	3,961	37,521	21,594	11,520	593	1,173	2,641	30,210	18,712	9,891	1,607
*Terrebonne	85,883	54,975	17,354	1,459	7,379	4,716	64,803	43,759	11,899	1,047	4,909	3,189	48,955	36,114	8,854	3,987
Vermilion	57,359	44,477	8,810	1,447	623	2,002	43,012	34,363	5,787	1,037	488	1,337	36,769	30,505	4,994	1,270
District 3	665,912	431,389	167,167	16,552	16,207	34,597	504,408	340,612	116,591	11,965	11,469	23,771	404,735	294,078	90,032	20,625
	100.000%	64.782%	25.103%	2.486%	2.434%	5.195%	100.000%	67.527%	23.114%	2.372%	2.274%	4.713%	80.240%	72.659%	22.245%	5.096%
District 4																
*Avoyelles	18,872	10,286	7,075	300	359	852	14,669	8,208	5,129	276	282	774	10,702	6,575	3,900	227
Concordia	18,687	10,275	7,725	122	233	332	14,217	8,108	5,613	100	167	229	11,964	7,222	4,540	202
*East Baton Rouge	270,429	79,291	167,907	7,485	2,202	13,544	210,296	68,393	124,450	6,092	1,738	9,623	159,794	49,826	101,838	8,130
East Feliciana	19,539	11,516	7,341	91	262	329	16,183	9,740	5,918	61	198	266	13,600	7,959	5,186	455
Iberville	30,241	14,833	13,730	202	274	1,202	24,086	12,462	10,232	149	221	1,022	20,462	10,132	9,897	433
*Lafayette	60,216	21,883	35,283	501	509	2,040	45,472	17,926	25,510	342	339	1,355	38,565	15,021	21,946	1,598
Pointe Coupee	20,758	12,395	7,504	107	159	593	16,250	10,108	5,502	91	119	430	14,675	9,320	5,121	234
St. Helena	10,920	4,527	6,031	39	134	189	8,463	3,805	4,371	28	109	150	8,321	3,628	4,565	128
*St. Landry	78,364	39,940	35,427	489	609	1,899	58,622	31,334	25,238	346	435	1,269	51,803	27,621	22,867	1,315
*Tangipahoa	57,665	25,691	27,967	658	749	2,600	44,008	21,362	19,820	520	564	1,742	31,119	15,866	14,147	1,106
Tensas	4,147	1,744	2,312	23	26	42	3,235	1,446	1,728	12	23	26	3,455	1,503	1,917	35
West Baton Rouge	27,199	14,307	11,170	287	326	1,109	20,526	11,146	8,149	209	219	803	17,141	9,937	6,865	339
West Feliciana	15,310	10,883	3,740	89	225	373	12,783	9,283	2,951	56	174	319	7,407	5,092	2,180	135
District 4	632,347	257,571	333,212	10,393	6,067	25,104	488,810	213,321	244,611	8,282	4,588	18,008	389,008	169,702	204,969	14,337
	100.000%	40.733%	52.694%	1.644%	0.959%	3.970%	100.000%	43.641%	50.042%	1.694%	0.939%	3.684%	79.583%	43.624%	52.690%	3.686%
District 5																
Acadia	57,576	44,480	10,864	238	573	1,421	42,943	34,071	7,383	173	400	916	37,678	30,555	6,407	716
Allen	22,750	16,327	4,490	246	947	740	17,510	12,751	3,275	182	646	656	12,201	9,478	2,217	506
*Avoyelles	20,821	15,339	4,603	134	408	337	15,909	12,061	3,182	103	288	275	12,724	9,959	2,394	371
Beauregard	36,549	29,529	4,649	402	1,052	917	27,489	22,304	3,495	269	773	648	22,294	18,771	2,369	1,154
*Calcasieu	56,547	47,632	5,238	604	1,137	1,936	42,239	36,123	3,620	392	810	1,294	33,752	29,839	2,714	1,199
Caldwell	9,645	7,646	1,632	51	150	166	7,478	5,969	1,224	46	116	123	6,031	5,124	818	89
Evangeline	32,350	21,354	9,235	241	280	1,240	24,408	16,460	6,483	187	217	1,061	20,553	14,566	5,643	344
Grant	22,169	17,709	3,335	133	644	348	17,527	13,964	2,717	97	507	242	12,688	11,174	1,176	338
Jackson	15,031	9,967	4,166	175	255	468	11,783	7,967	3,125	140	174	377	9,449	6,647	2,610	192
Jefferson Davis	32,250	25,066	5,837	183	472	692	24,039	19,121	4,006	111	325	476	20,013	16,350	3,202	461
La Salle	14,791	11,348	1,422	283	372	1,366	11,563	8,636	1,065	264	271	1,327	8,792	7,978	637	177

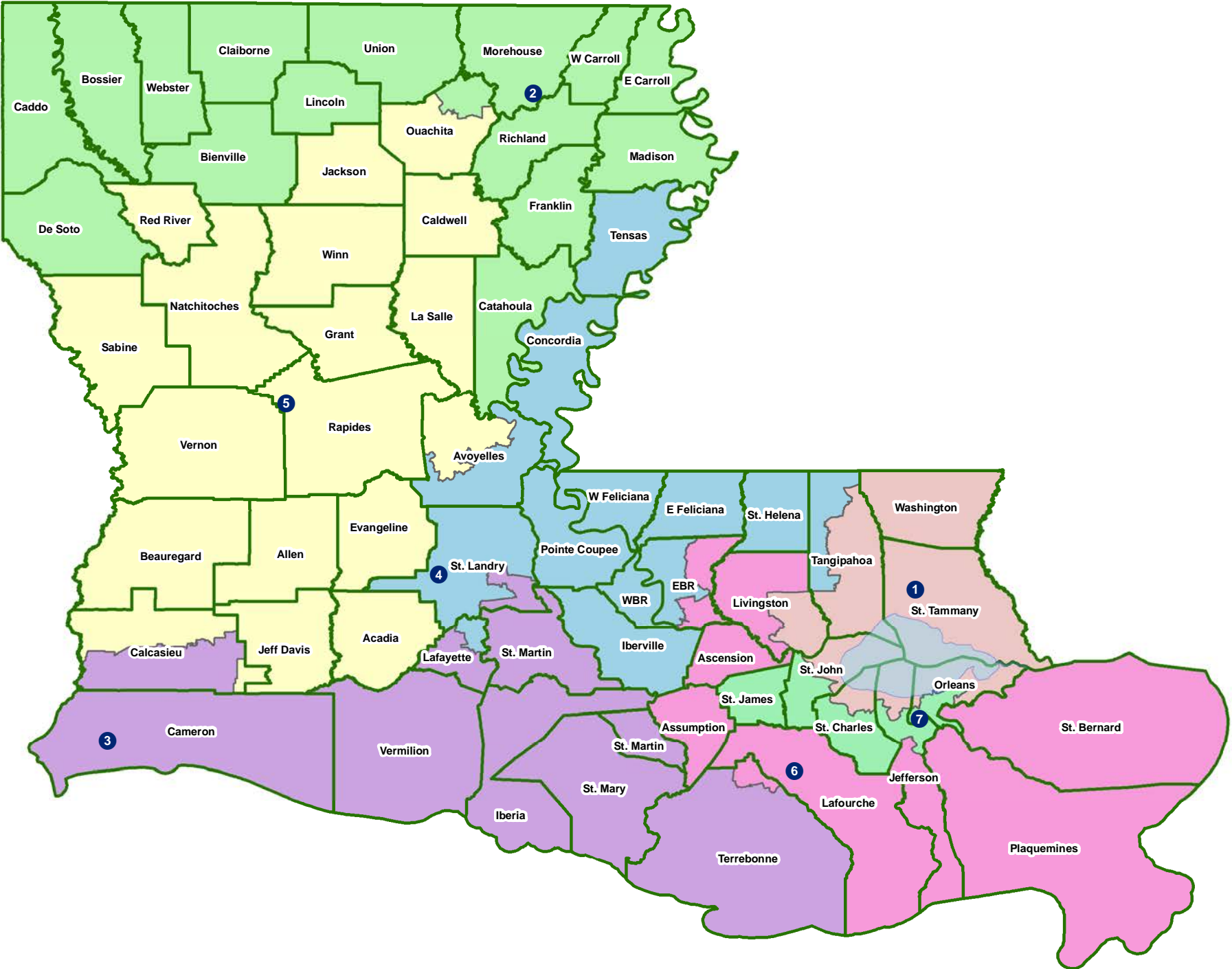


# Splits

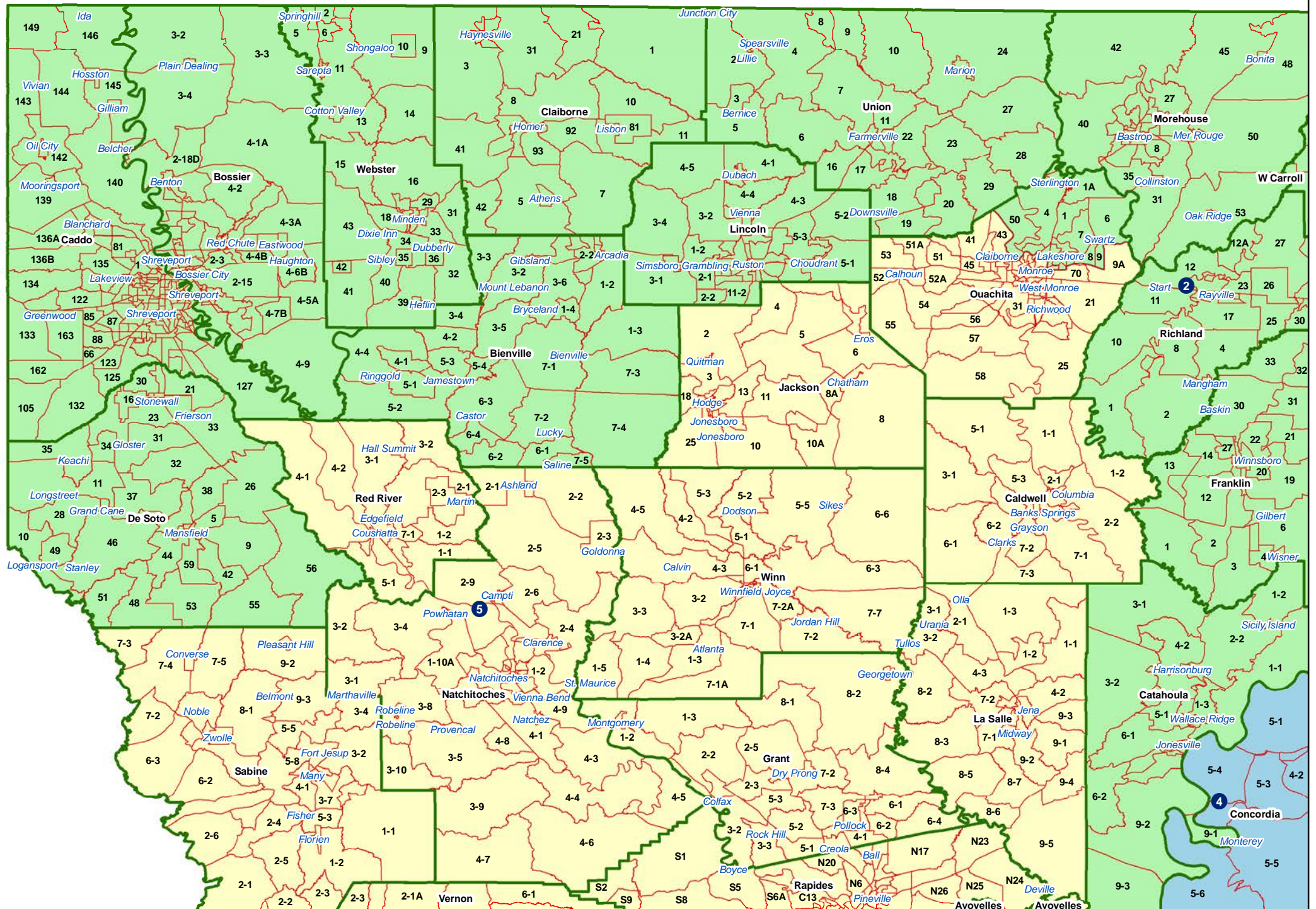
Plan: SCA SB15-123

	Total Population	Total White	Total Black	Total Asian	Total American Indian	Total Other	VAP Total	VAP White	VAP Black	VAP Asian	VAP American Indian	VAP Other	Reg Total Dec 2021	Reg White Dec 2021	Reg Black Dec 2021	Reg Other Dec 2021
District 5																
Natchitoches	37,515	19,361	15,725	255	861	1,313	29,349	16,010	11,415	198	683	1,043	23,107	12,850	9,224	1,033
*Ouachita	118,135	65,465	44,716	1,660	2,035	4,259	88,091	51,444	30,704	1,237	1,591	3,115	74,430	44,745	27,167	2,518
Rapides	130,023	77,510	42,592	2,428	3,102	4,391	98,792	61,373	30,205	1,786	2,334	3,094	80,176	52,832	23,775	3,569
Red River	7,620	4,195	3,106	25	171	123	5,714	3,338	2,164	3	116	93	5,631	3,130	2,418	83
Sabine	22,155	15,036	3,861	94	2,723	441	17,064	12,054	2,655	66	1,970	319	14,547	11,023	2,184	1,340
Vernon	48,750	35,087	7,611	1,442	1,600	3,010	36,261	26,765	5,133	1,074	1,160	2,129	24,060	19,182	3,011	1,867
Winn	13,755	8,594	3,727	210	263	961	10,906	6,932	2,695	170	207	902	8,406	5,988	2,292	126
District 5	698,432	471,645	176,809	8,804	17,045	24,129	529,065	367,343	124,546	6,498	12,588	18,090	426,532	310,191	100,258	16,083
	100.000%	67.529%	25.315%	1.261%	2.440%	3.455%	100.000%	69.432%	23.541%	1.228%	2.379%	3.419%	80.620%	72.724%	23.505%	3.771%
District 6																
Ascension	126,500	81,141	32,216	2,300	2,004	8,839	91,957	61,136	22,139	1,514	1,390	5,778	79,917	56,800	18,814	4,303
Assumption	21,039	13,722	6,220	96	258	743	16,616	11,145	4,707	57	197	510	14,439	9,700	4,510	229
*East Baton Rouge	186,352	116,778	45,491	8,940	2,525	12,618	145,316	95,488	32,340	6,507	2,009	8,972	119,470	88,406	22,837	8,227
*Jefferson	10,523	7,659	1,258	481	415	710	8,053	6,009	882	359	299	504	7,145	5,807	786	552
Lafourche	97,557	71,710	15,855	1,025	4,224	4,743	74,619	56,838	11,077	738	2,777	3,189	58,278	48,467	7,164	2,647
*Livingston	130,829	107,250	11,607	1,614	2,901	7,457	96,332	80,888	7,408	1,055	2,147	4,834	76,898	69,278	4,754	2,866
Plaquemines	23,515	14,287	5,428	1,317	697	1,786	17,334	10,856	3,857	925	500	1,196	13,908	9,513	3,134	1,261
St. Bernard	43,764	24,497	12,309	1,381	947	4,630	31,775	18,992	7,944	982	688	3,169	25,653	18,233	5,497	1,923
*Terrebonne	23,697	14,959	5,793	284	1,258	1,403	17,702	11,872	3,897	192	841	900	12,765	9,281	2,712	772
District 6	663,776	452,003	136,177	17,438	15,229	42,929	499,704	353,224	94,251	12,329	10,848	29,052	408,473	315,485	70,208	22,780
	100.000%	68.096%	20.516%	2.627%	2.294%	6.467%	100.000%	70.687%	18.861%	2.467%	2.171%	5.814%	81.743%	77.235%	17.188%	5.577%
District 7																
*Jefferson	206,814	70,490	96,020	11,326	3,458	25,520	157,893	58,565	70,183	8,878	2,656	17,611	119,689	47,280	57,236	15,173
*Orleans	355,555	103,573	217,261	11,627	3,323	19,771	283,858	91,981	164,791	9,633	2,682	14,771	236,083	74,658	140,545	20,880
*St. Charles	33,299	20,159	10,403	503	593	1,641	25,061	15,682	7,468	311	436	1,164	22,171	14,481	6,665	1,025
St. James	20,192	9,973	9,762	60	82	315	15,505	7,883	7,297	31	64	230	14,966	7,254	7,501	211
*St. John the Baptist	39,425	12,261	24,170	382	401	2,211	30,097	10,230	17,692	305	306	1,564	26,845	8,881	16,625	1,339
District 7	655,285	216,456	357,616	23,898	7,857	49,458	512,414	184,341	267,431	19,158	6,144	35,340	419,754	152,554	228,572	38,628
	100.000%	33.032%	54.574%	3.647%	1.199%	7.548%	100.000%	35.975%	52.190%	3.739%	1.199%	6.897%	81.917%	36.344%	54.454%	9.203%

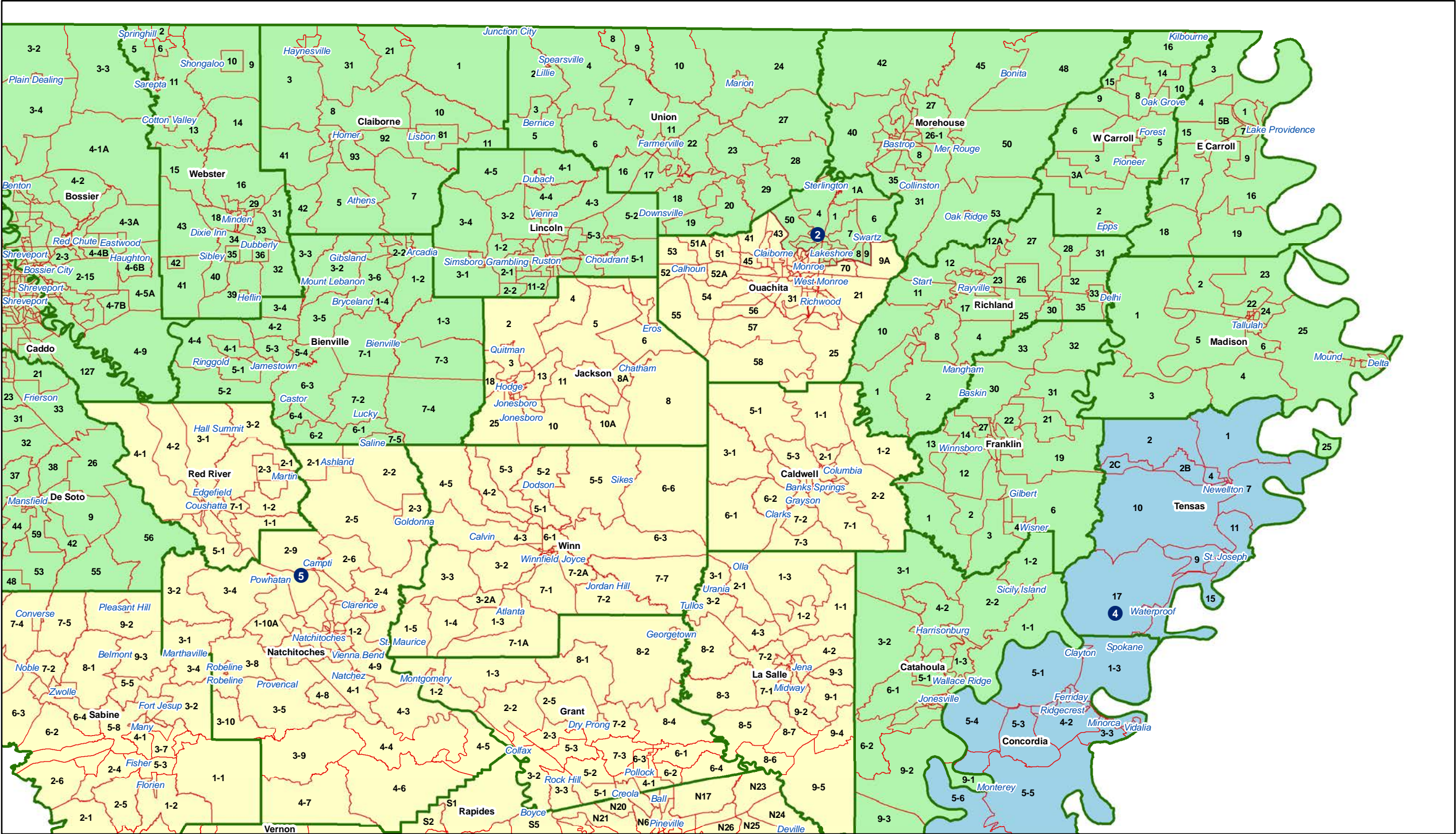
Supreme Court - Statewide



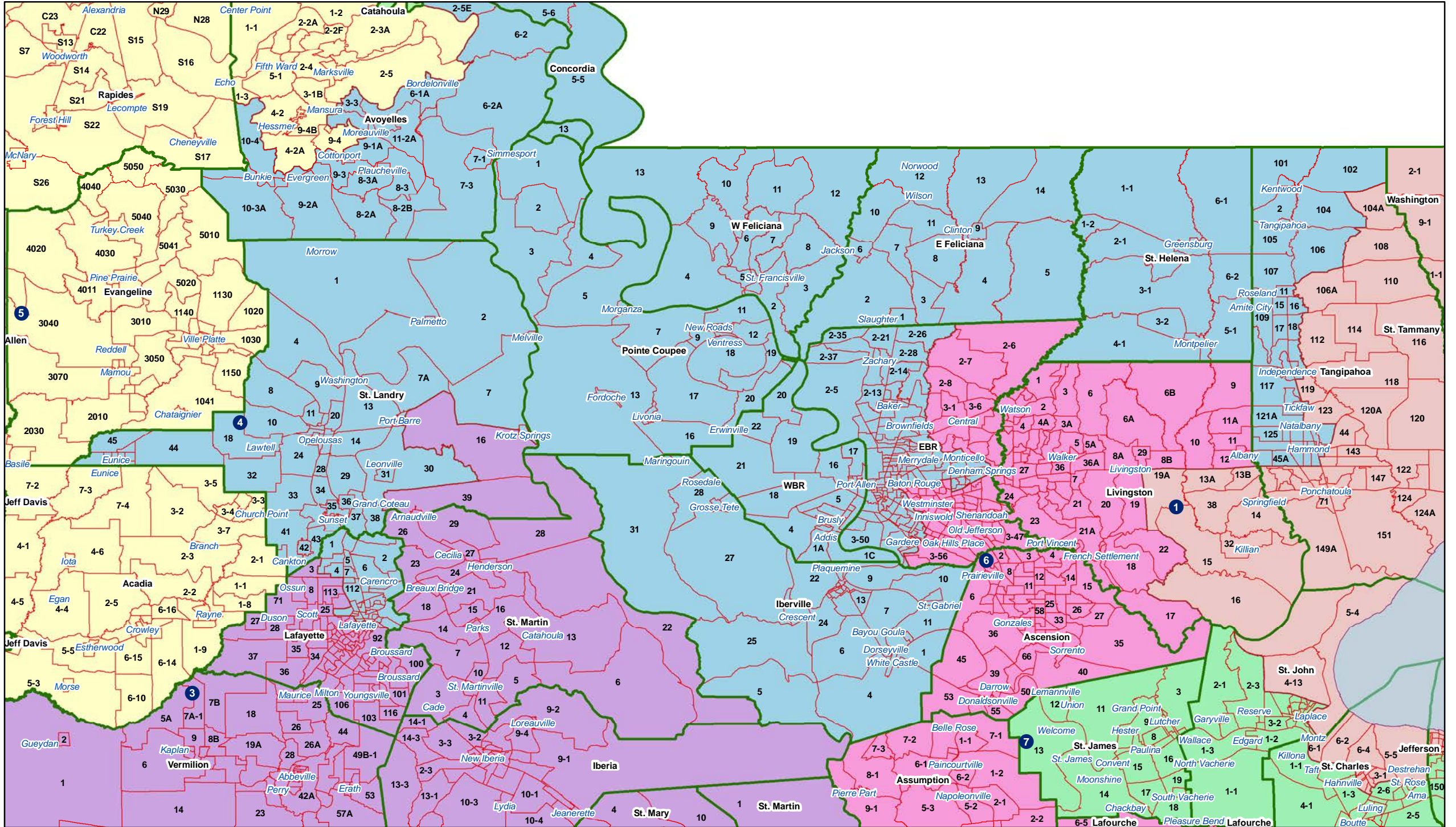
# Supreme Court - Northeast



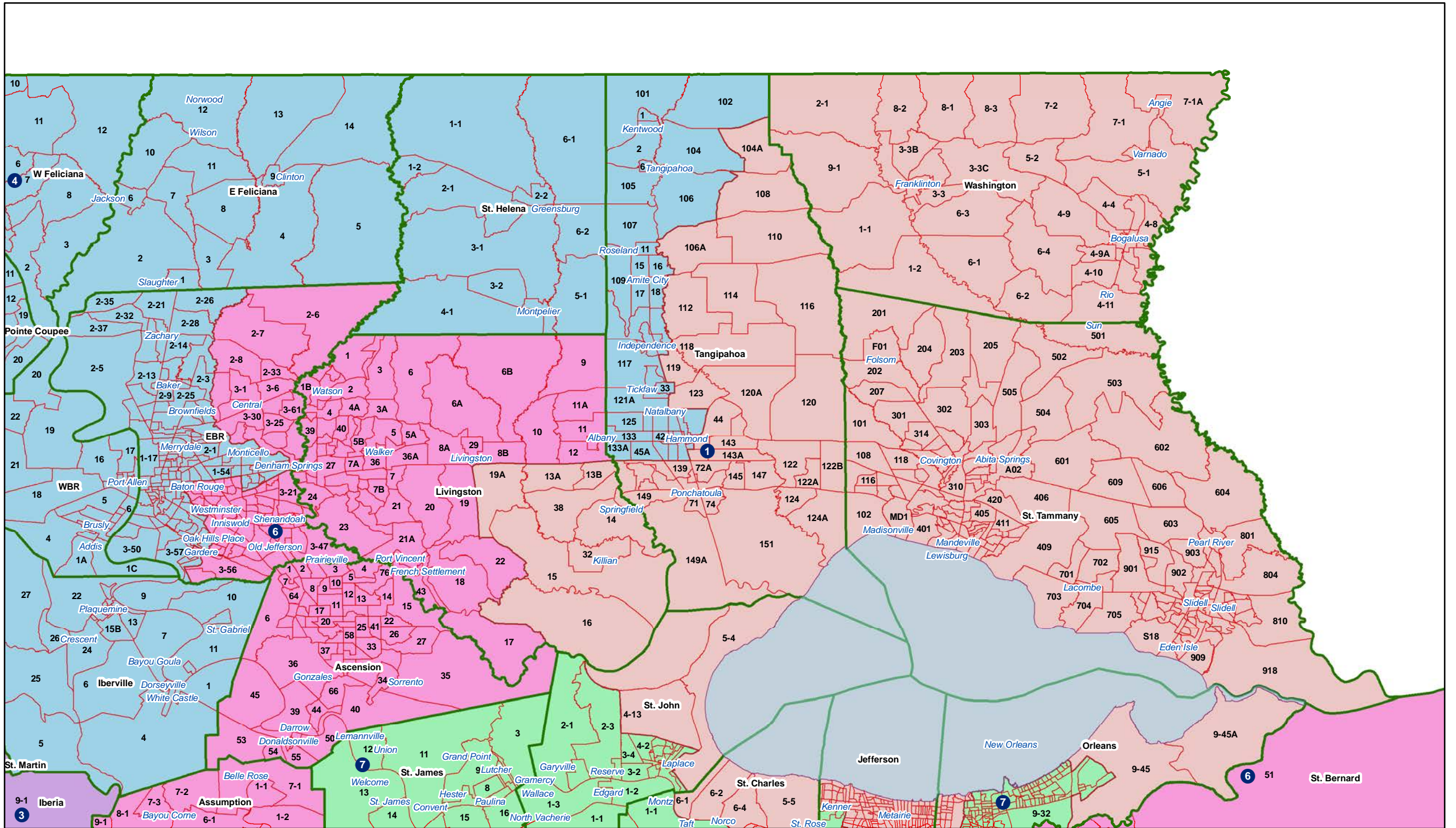
# Supreme Court - Northeast



# Supreme Court - EBR Metro



# Supreme Court - Florida Parishes



# Supreme Court - Orleans-River

