

2022 First Extraordinary Session

HOUSE BILL NO. 22

BY REPRESENTATIVE IVEY

REAPPORTIONMENT/JUDGES: Provides for the redistricting of the supreme court (Item #6)

1 AN ACT

2 To enact R.S. 13:101.2 and 101.3 and to repeal R.S. 13:101, 101.1, and 312.4, relative to the  
3 supreme court; to provide relative to redistricting supreme court justice districts; to  
4 provide for the filling of vacancies; to eliminate statutory provisions for a temporary  
5 additional judgeship for the Court of Appeal for the Fourth Circuit and such judge's  
6 appointment to the supreme court; and to provide for related matters.

7 Be it enacted by the Legislature of Louisiana:

8 Section 1. R.S. 13:101.2 and 101.3 are hereby enacted to read as follows:

9 §101.2. Supreme court districts; justices

10 The state shall be divided into seven supreme court districts. The supreme  
11 court shall be composed of one justice elected from each of the seven districts as set  
12 forth below:

- 13 (1) District 1 is composed of Precincts 1, 2, 3, 4, 5, 7, 8, 9, 10, 11, 12, 13, 14,
- 14 15, 16, 17, 18, 19, 20, 21, 22, 23, 24, 25, 26, 27, 28, 29, 30, 31, 32, 33, 34, 35, 36, 37,
- 15 38, 39, 40, 41, 42, 43, 44, 45, 46, 51, 52, 53, 54, 55, 56, 57, 58, 59, 60, 61, 62, 63, 64,
- 16 65, 66, 67, 68, 69, 70, 71, 72, 73, 74, 75, 76, 77, 78, 79, 80, 81, 82, 83, 84, 85, 86, 87,
- 17 88, 89, 90, 91, 92, 93, 94, 95, 96, 97, 98, 99, 100, 101, 102, 103, 105, 106, 108, 116,
- 18 117, 118, 119, 120, 121, 122, 123, 124, 125A, 125B, 126, 127, 128, 129, 130, 132,
- 19 247, 248, 1-GI, 1-H, 2-H, 3-H, 4-H, 5-H, 6-H, 7-H, 8-H, 9-H, 1-K, 2-K, 3-K, 4-K,
- 20 5-K, 6-KA, 6-KB, 7-KA, 7-KB, 8-K, 9-K, 10-K, 11-K, 12-K, 13-KA, 13-KB, 14-K,

1 15-K, 16-K, 17-K, 18-K, 19-K, 20-K, 25-K, 27-K, 28-K, 29-K, 34-K, 35-K, and 1-L  
 2 of Jefferson Parish; Precincts 3-20, 4-8, 4-9, 4-11, 4-14, 4-15, 4-17, 4-17A, 4-18,  
 3 4-20, 4-21, 4-22, 4-23, 5-13, 5-15, 5-16, 5-17, 5-18, 9-45A, 17-17, 17-18, 17-18A,  
 4 17-19, and 17-20 of Orleans Parish; Plaquemines Parish; St. Bernard Parish;  
 5 St. Tammany Parish; and Washington Parish.

6 (2) District 2 is composed of Precincts 2-3A, 2-5A, 2-6, 2-8, 2-9, 2-11,  
 7 2-11A, 2-12A, 2-12B, 2-12C, 2-13, 2-17A, 2-17B, 2-19, 2-23, 3-1, 3-2, 3-3, 3-4,  
 8 4-8C, and 4-8D of Bossier Parish; Caddo Parish; Claiborne Parish; Concordia Parish;  
 9 Precincts 1-1, 1-2, 1-3, 1-4, 1-5, 1-6, 1-10, 1-11, 1-13, 1-14, 1-15, 1-16, 1-17, 1-18,  
 10 1-19, 1-20, 1-21, 1-22, 1-23, 1-24, 1-25, 1-26, 1-27, 1-28, 1-29, 1-30, 1-31, 1-32,  
 11 1-36, 1-37, 1-38, 1-44, 1-45, 1-46, 1-50, 1-51, 1-54, 1-58, 1-61, 1-62, 1-63, 1-67,  
 12 1-68, 1-69, 1-70, 1-71, 1-76, 1-77, 1-78, 1-81, 1-82, 1-83, 1-84, 1-85, 1-86, 1-87,  
 13 1-88, 1-91, 1-92, 1-93, 1-94, 1-95, 1-97, 1-100, 1-101, 1-102, 1-104, 2-1, 2-2, 2-3,  
 14 2-4, 2-5, 2-9, 2-10, 2-11, 2-12, 2-13, 2-14, 2-15, 2-16, 2-17, 2-18, 2-19, 2-20, 2-21,  
 15 2-22, 2-23, 2-24, 2-25, 2-26, 2-27, 2-28, 2-29, 2-30, 2-31, 2-32, 2-34, 2-35, 2-36,  
 16 2-37, 3-8, 3-12, 3-24, 3-28, 3-32, 3-54, and 3-72 of East Baton Rouge Parish; East  
 17 Carroll Parish; East Feliciana Parish; Madison Parish; Precincts 29, 31, 32, 42, 45,  
 18 47, 48, 50, 53, and 54 of Morehouse Parish; Precincts 3, 5, 8, 9, 9A, 10, 11, 12, 13,  
 19 14, 15, 16, 17, 18, 19, 20, 21, 22, 23, 24, 26, 27, 27A, 28, 29, 30, 34, 47, 59, 60, 62,  
 20 63, 65, 65A, 66, 67, 68, 69, 70, 72, 73, 74, and 79 of Ouachita Parish; Tensas Parish;  
 21 Precincts 1, 2, 3, 4, 8, 9, 10, 24, and 26 of Union Parish; Precincts 1, 2, 2B, 3, 4, 5,  
 22 6, 8, 9, 10, 11, 12, 13, 14, 15, 16, 17, 17A, 18, 22, 24, 25, 25A, 26, 27, 28, 29, 31, 33,  
 23 and 34 of Webster Parish; West Carroll Parish; and West Feliciana Parish.

24 (3) District 3 is composed of Acadia Parish; Beauregard Parish; Bienville  
 25 Parish; Precincts 1-1, 1-2, 1-3, 1-3A, 1-3B, 1-4, 1-5, 2-1, 2-2, 2-3, 2-4, 2-7, 2-10,  
 26 2-14, 2-15, 2-16, 2-18B, 2-18C, 2-18D, 2-18E, 2-18F, 2-18G, 2-20, 2-21A, 2-21B,  
 27 2-21C, 2-21D, 2-22A, 2-22B, 2-22C, 4-1A, 4-2, 4-3A, 4-3B, 4-3C, 4-3D, 4-4A,  
 28 4-4B, 4-5A, 4-6A, 4-6B, 4-7A, 4-7B, 4-8A, 4-8B, 4-8E, 4-8G, 4-9, 4-10, 4-11A,  
 29 4-11B, and 4-11C of Bossier Parish; Calcasieu Parish; Cameron Parish; DeSoto

1 Parish; Jefferson Davis Parish; Natchitoches Parish; Red River Parish; Sabine Parish;  
 2 Precincts 32, 33, 34, 35, 41, 42, and 43 of St. Landry Parish; Vermilion Parish;  
 3 Vernon Parish; and Precincts 32, 35, 36, 38, 39, 40, 41, 42, and 43 of Webster Parish.

4 (4) District 4 is composed of Allen Parish; Avoyelles Parish; Caldwell  
 5 Parish; Catahoula Parish; Evangeline Parish; Franklin Parish; Grant Parish; Jackson  
 6 Parish; LaSalle Parish; Lincoln Parish; Precincts 1, 3-1, 6, 7, 8, 12, 13, 14, 16, 20,  
 7 21, 23, 24, 26-1, 27, 35, 37, 39-1, 39-2, and 40 of Morehouse Parish; Precincts 1, 1A,  
 8 2, 4, 6, 7, 25, 31, 32, 33, 35, 36, 37, 38, 39, 40, 41, 42, 43, 44, 44A, 45, 46, 48, 49,  
 9 50, 51, 51A, 52, 52A, 53, 54, 55, 56, 56A, 57, 58, 61, 64, 71, 75, 76, 77, and 78 of  
 10 Ouachita Parish; Pointe Coupee Parish; Rapides Parish; Richland Parish; Precincts  
 11 1, 2, 3, 4, 5, 6, 7, 7A, 8, 9, 10, 11, 12, 13, 14, 15, 16, 17, 18, 19, 20, 21, 22, 23, 24,  
 12 25, 26, 27, 28, 29, 30, 31, 36, 37, 38, 39, 40, 44, 45, 46, 47, 48, 49, 50, 51, and 52 of  
 13 St. Landry Parish; Precincts 5, 6, 7, 11, 12, 13, 14, 15, 16, 17, 17A, 18, 19, 20, 22,  
 14 23, 27, 28, and 29 of Union Parish; West Baton Rouge Parish; and Winn Parish.

15 (5) District 5 is composed of Ascension Parish; Assumption Parish; Precincts  
 16 1-7, 1-8, 1-9, 1-12, 1-33, 1-34, 1-35, 1-39, 1-40, 1-41, 1-42, 1-43, 1-47, 1-48, 1-49,  
 17 1-52, 1-53, 1-55, 1-56, 1-57, 1-59, 1-60, 1-64, 1-65, 1-66, 1-72, 1-73, 1-74, 1-75,  
 18 1-79, 1-80, 1-89, 1-90, 1-98, 1-99, 1-103, 1-105, 1-107, 2-6, 2-7, 2-8, 2-33, 3-1, 3-2,  
 19 3-3, 3-4, 3-5, 3-6, 3-7, 3-9, 3-10, 3-11, 3-13, 3-14, 3-15, 3-16, 3-17, 3-18, 3-19, 3-20,  
 20 3-21, 3-22, 3-23, 3-25, 3-26, 3-27, 3-29, 3-30, 3-31, 3-33, 3-34, 3-35, 3-36, 3-37,  
 21 3-38, 3-39, 3-40, 3-41, 3-43, 3-44, 3-45, 3-46, 3-47, 3-48, 3-49, 3-50, 3-51, 3-52,  
 22 3-53, 3-55, 3-56, 3-57, 3-58, 3-59, 3-60, 3-61, 3-62, 3-63, 3-64, 3-65, 3-66, 3-67,  
 23 3-68, 3-69, 3-70, and 3-71 of East Baton Rouge Parish; Livingston Parish; St. Helena  
 24 Parish; St. James Parish; and Tangipahoa Parish.

25 (6) District 6 is composed of Iberia Parish; Iberville Parish; Lafayette Parish;  
 26 Lafourche Parish; St. Martin Parish; St. Mary Parish; and Terrebonne Parish.

27 (7) District 7 is composed of Precincts 104, 115, 131, 133, 134, 136, 138,  
 28 150, 151, 152, 153, 154, 155, 156, 157A, 157B, 170, 171, 172, 173, 174, 175, 176,  
 29 177, 178, 179A, 179B, 180, 181, 182, 183, 184, 185A, 185B, 187, 188, 189, 190,

1 191, 192, 193A, 193B, 194A, 194B, 195, 196, 197A, 197B, 198, 199, 200, 201, 202,  
2 203, 204, 205, 210, 211, 212, 213A, 213B, 213C, 214A, 214B, 215, 216A, 216B,  
3 216C, 217, 225, 226, 227, 228, 229, 230, 231, 232A, 232B, 234, 235, 236, 237,  
4 238A, 238B, 246, 1-G, 2-G, 3-G, 4-G, 5-G, 6-G, 7-G, 8-G, 9-G, 10-G, 11-G, 12-G,  
5 13-G, 21-K, 22-K, 23-K, 24-K, 26-K, 30-K, 31-K, 33-K, 1-W, 2-W, 3-W, 4-W, 5-W,  
6 6-W, and 7-W of Jefferson Parish; Precincts 1-1, 1-2, 1-5, 1-6, 2-1, 2-2, 2-4, 2-6, 2-7,  
7 3-1, 3-8, 3-9, 3-12, 3-14, 3-15, 3-18, 3-19, 4-2, 4-3, 4-5, 4-6, 4-7, 5-1, 5-2, 5-3, 5-5,  
8 5-7, 5-8, 5-9, 5-10, 5-11, 5-12, 6-1, 6-2, 6-4, 6-6, 6-7, 6-8, 6-9, 7-1, 7-2, 7-4, 7-5, 7-6,  
9 7-7, 7-8, 7-9A, 7-10, 7-11, 7-12, 7-13, 7-14, 7-15, 7-16, 7-17, 7-18, 7-19, 7-20, 7-21,  
10 7-23, 7-24, 7-25, 7-25A, 7-26, 7-27, 7-27B, 7-28, 7-28A, 7-29, 7-30, 7-32, 7-33,  
11 7-35, 7-37, 7-37A, 7-40, 7-41, 7-42, 8-1, 8-2, 8-4, 8-6, 8-7, 8-8, 8-9, 8-12, 8-13,  
12 8-14, 8-15, 8-19, 8-20, 8-21, 8-22, 8-23, 8-24, 8-25, 8-26, 8-27, 8-28, 8-30, 9-1, 9-3,  
13 9-4, 9-5, 9-6, 9-7, 9-8, 9-9, 9-10, 9-11, 9-12, 9-13, 9-14, 9-15, 9-16, 9-17, 9-19, 9-21,  
14 9-23, 9-25, 9-26, 9-28, 9-28C, 9-29, 9-30, 9-30A, 9-31, 9-31A, 9-31B, 9-31D, 9-32,  
15 9-33, 9-34A, 9-35, 9-35A, 9-36, 9-36B, 9-37, 9-38, 9-38A, 9-39, 9-39B, 9-40,  
16 9-40A, 9-40C, 9-41, 9-41A, 9-41B, 9-41C, 9-41D, 9-42, 9-42C, 9-43A, 9-43B,  
17 9-43C, 9-43E, 9-43F, 9-43G, 9-43H, 9-43I, 9-43J, 9-43K, 9-43L, 9-43M, 9-43N,  
18 9-44, 9-44A, 9-44B, 9-44D, 9-44E, 9-44F, 9-44G, 9-44I, 9-44J, 9-44L, 9-44M,  
19 9-44N, 9-44O, 9-44P, 9-44Q, 9-45, 10-3, 10-6, 10-7, 10-8, 10-9, 10-11, 10-12,  
20 10-13, 10-14, 11-2, 11-3, 11-4, 11-5, 11-8, 11-9, 11-10, 11-11, 11-12, 11-13, 11-14,  
21 11-17, 12-1, 12-2, 12-3, 12-4, 12-5, 12-6, 12-7, 12-8, 12-9, 12-10, 12-11, 12-12,  
22 12-13, 12-14, 12-16, 12-17, 12-19, 13-1, 13-2, 13-3, 13-4, 13-5, 13-6, 13-7, 13-8,  
23 13-9, 13-10, 13-11, 13-12, 13-13, 13-14, 13-15, 13-16, 14-1, 14-2, 14-3, 14-4, 14-5,  
24 14-6, 14-7, 14-8, 14-9, 14-10, 14-11, 14-12, 14-13A, 14-14, 14-15, 14-16, 14-17,  
25 14-18A, 14-19, 14-20, 14-21, 14-23, 14-24A, 14-25, 14-26, 15-1, 15-2, 15-3, 15-5,  
26 15-6, 15-8, 15-9, 15-10, 15-11, 15-12, 15-12A, 15-13, 15-13A, 15-13B, 15-14,  
27 15-14A, 15-14B, 15-14C, 15-14D, 15-14E, 15-14F, 15-14G, 15-15, 15-15A, 15-15B,  
28 15-16, 15-17, 15-17A, 15-17B, 15-18, 15-18A, 15-18B, 15-18C, 15-18D, 15-18E,  
29 15-18F, 15-19, 15-19A, 15-19B, 15-19C, 16-1, 16-1A, 16-2, 16-3, 16-4, 16-5, 16-6,

1       16-7, 16-8, 16-9, 17-1, 17-2, 17-3, 17-4, 17-5, 17-6, 17-7, 17-8, 17-9, 17-10, 17-11,  
2       17-12, 17-13, 17-13A, 17-14, 17-15, and 17-16 of Orleans Parish; St. Charles Parish;  
3       and St. John the Baptist Parish.

4       §101.3. Assignment of districts; vacancies, elections; redistricting

5             A. Each justice of the supreme court in office on January 1, 2023, shall be  
6       the justice for the district having the same designation as the district from which the  
7       justice was elected and shall complete the term for which he was elected.

8             B. The successor to the office of justice of the supreme court shall be elected  
9       from the district assigned to that office as provided by Subsection A of this Section.

10       The election shall be from the district composed as provided by R.S. 13:101.2.

11       Section 2. R.S. 13:101, 101.1, and 312.4 are hereby repealed.

12       Section 3.(A) The precincts referenced in this Act are those precincts identified as  
13       Voting Districts (VTDs) in the 2020 Census Redistricting TIGER/Line Shapefiles for the  
14       State of Louisiana as validated through the data verification program of the Louisiana House  
15       of Representatives and the Louisiana Senate and available on the legislature's website on the  
16       effective date of this Section.

17       (B) When a precinct referenced in this Act has been subdivided by action of the  
18       parish governing authority on a nongeographic basis or subdivided by action of the parish  
19       governing authority on a geographic basis in accordance with the provisions of R.S.  
20       18:532.1, the enumeration in this Act of the general precinct designation shall include all  
21       nongeographic and all geographic subdivisions thereof, however such subdivisions may be  
22       designated.

23       (C) The territorial limits of the districts as provided in this Act shall continue in  
24       effect until changed by law regardless of any subsequent change made to the precincts by  
25       the parish governing authority.

26       Section 4.(A) Solely for the purposes of qualifying for election and the election of  
27       a member of the supreme court from District 6 at the regularly scheduled election for such  
28       office in 2022, the provisions of Section 1 of this Act shall become effective upon signature  
29       of this Act by the governor or, if not signed by the governor, upon expiration of the time for

1 bills to become law without signature by the governor, as provided in Article III, Section 18  
2 of the Constitution of Louisiana. If this Act is vetoed by the governor and subsequently  
3 approved by the legislature, the provisions of Section 1 of this Act shall become effective  
4 on the day following such approval for the purposes established in this Subsection.

5 (B) For subsequent elections of members of the supreme court and for all other  
6 purposes, the provisions of Section 1 of this Act shall become effective on January 1, 2023.

7 (C) The provisions of Section 2 of this Act shall become effective on January 1,  
8 2023.

9 (D) The provisions of this Section and Section 3 of this Act shall become effective  
10 upon signature of this Act by the governor or, if not signed by the governor, upon expiration  
11 of the time for bills to become law without signature by the governor, as provided in Article  
12 III, Section 18 of the Constitution of Louisiana. If this Act is vetoed by the governor and  
13 subsequently approved by the legislature, the provisions of this Section and Section 3 of this  
14 Act shall become effective on the day following such approval.

---

#### DIGEST

The digest printed below was prepared by House Legislative Services. It constitutes no part of the legislative instrument. The keyword, one-liner, abstract, and digest do not constitute part of the law or proof or indicia of legislative intent. [R.S. 1:13(B) and 24:177(E)]

---

HB 22 Original

2022 First Extraordinary Session

Ivey

**Abstract:** Provides for the redistricting of the state's supreme court and provides for the composition of seven supreme court districts. Effective for election purposes for the regular supreme court District 6 election in 2022 and for all purposes on Jan. 1, 2023.

Statistical summaries of proposed law including maps illustrating proposed district boundaries accompany this digest. (*Attached to the bill version on the internet.*)

Present constitution (Const. Art. V, §3) provides the supreme court must be composed of a chief justice and six associate justices.

Present constitution (Const. Art. V, §4) provides the state must be divided into at least six supreme court districts, and at least one judge shall be elected from each. Further provides the districts and the number of judges assigned to each on the effective date of this constitution are retained, subject to change by law enacted by two-thirds of the elected members of each house of the legislature.

Proposed law redraws district boundaries for the seven supreme court districts.

Proposed law provides the district boundaries will be effective upon signature of the governor or lapse of time for gubernatorial action for the purposes of qualifying for election

and the election of a member of the supreme court from District 6 at the regularly scheduled election for such office in 2022.

Proposed law provides for subsequent elections of members of the supreme court and for all other purposes an effective date of Jan. 1, 2023, at which time present law is repealed and proposed districts are effective for all other purposes.

Proposed law repeals present law that provides for an additional judgeship for the Court of Appeal for the Fourth Circuit who is assigned to the La. Supreme Court.

Proposed law specifies that precincts referenced in district descriptions are those precincts identified as Voting Districts (VTDs) in the 2020 Census Redistricting TIGER/Line Shapefiles for the state of La. as validated through the data verification program of the La. legislature. Also specifies that if any such precinct has been subdivided by action of the parish governing authority on a nongeographic basis or subdivided by action of the parish governing authority on a geographic basis in accordance with present law, the enumeration of the general precinct designation shall include all nongeographic and all geographic subdivisions thereof. Further provides that the territorial limits of the districts as enacted shall continue in effect until changed by law regardless of any subsequent change made to the precincts by the parish governing authority.

Population data in the summaries accompanying this digest are derived from 2020 Census Redistricting Data (Public Law 94-171), Summary File for Louisiana. Population data, statistical information, and maps are supplied for purposes of information and analysis and comprise no part of proposed law.

Effective for election purposes only for the supreme court District 6 election in 2022; effective for other purposes Jan. 1, 2023.

(Adds R.S. 13:101.2 and 101.3; Repeals R.S. 13:101, 101.1, and 312.4)

# Plan Statistics

Plan: 221ES1-9 (Ivey) Original

<u>Districts:</u>	<u># of Members</u>	<u>Actual Population</u>	<u>Ideal Population</u>	<u>Absolute Deviation</u>	<u>Relative Deviation</u>
District 1	1	640,806	665,393	-24,587	-3.695%
District 2	1	693,320	665,393	27,927	4.197%
District 3	1	683,531	665,393	18,138	2.726%
District 4	1	640,540	665,393	-24,853	-3.735%
District 5	1	693,017	665,393	27,624	4.152%
District 6	1	650,233	665,393	-15,160	-2.278%
District 7	1	656,310	665,393	-9,083	-1.365%
<b>Grand Total:</b>	<b>7</b>	<b>4,657,757</b>	<b>4,657,751</b>		

Ideal Population Per Member:	665393		
Number of Districts for Plan Type:	7		
Range of District Populations:	640,540	to	693,320
Absolute Mean Deviation:	7,540		
Absolute Range:	-24,853	to	27,927
Absolute Overall Range:	52,780		
Relative Mean Deviation:	3.16%		
Relative Range:	-3.74%	to	4.20%
Relative Overall Range:	7.94%		

<b><i>Ideal - Actual:</i></b>	<b>-6</b>
<b><i>Remainder:</i></b>	<b>6</b>
<b><i>Unassigned Population:</i></b>	<b>0</b>



# Total Population

Plan: 221ES1-9 (Ivey) Original

	Total Population	Total White	Total Black	Total Asian	Total American Indian	Total Other	Total Hispanic	VAP Total	VAP White	VAP Black	VAP Asian	VAP American Indian	VAP Other	VAP Hispanic Total
District 1	640,806	438,437	102,555	21,268	12,545	66,001	81,025	496,701	352,221	72,321	15,590	9,323	47,246	56,800
	100.000%	68.420%	16.004%	3.319%	1.958%	10.300%	12.644%	100.000%	70.912%	14.560%	3.139%	1.877%	9.512%	11.435%
District 2	693,320	254,026	395,254	11,913	8,206	23,921	29,147	532,892	212,467	287,682	9,301	6,356	17,086	20,575
	100.000%	36.639%	57.009%	1.718%	1.184%	3.450%	4.204%	100.000%	39.871%	53.985%	1.745%	1.193%	3.206%	3.861%
District 3	683,531	469,602	159,265	11,883	15,791	26,990	33,003	514,463	363,615	112,266	8,409	11,653	18,520	21,638
	100.000%	68.702%	23.300%	1.738%	2.310%	3.949%	4.828%	100.000%	70.679%	21.822%	1.635%	2.265%	3.600%	4.206%
District 4	640,540	407,000	193,680	7,739	11,617	20,504	24,972	491,676	321,212	140,197	5,874	8,737	15,656	18,846
	100.000%	63.540%	30.237%	1.208%	1.814%	3.201%	3.899%	100.000%	65.330%	28.514%	1.195%	1.777%	3.184%	3.833%
District 5	693,017	457,578	166,460	16,966	11,316	40,697	46,890	527,534	361,136	117,856	12,280	8,482	27,780	31,185
	100.000%	66.027%	24.020%	2.448%	1.633%	5.872%	6.766%	100.000%	68.457%	22.341%	2.328%	1.608%	5.266%	5.911%
District 6	650,233	409,254	174,336	12,979	19,348	34,316	40,531	494,801	325,706	122,904	9,352	13,302	23,537	27,215
	100.000%	62.940%	26.811%	1.996%	2.976%	5.277%	6.233%	100.000%	65.826%	24.839%	1.890%	2.688%	4.757%	5.500%
District 7	656,310	221,755	351,569	24,540	8,237	50,209	66,981	512,481	188,154	262,543	19,610	6,387	35,787	47,403
	100.000%	33.788%	53.568%	3.739%	1.255%	7.650%	10.206%	100.000%	36.714%	51.230%	3.826%	1.246%	6.983%	9.250%
Grand Total	4,657,757	2,657,652	1,543,119	107,288	87,060	262,638	322,549	3,570,548	2,124,511	1,115,769	80,416	64,240	185,612	223,662
	100.000%	57.059%	33.130%	2.303%	1.869%	5.639%	6.925%	100.000%	59.501%	31.249%	2.252%	1.799%	5.198%	6.264%

# Voter Registration

Plan: 221ES1-9 (Ivey) Original

	Reg Total Dec 2021	Reg White Dec 2021	Reg Black Dec 2021	Reg Other Dec 2021	Reg Dem Total Dec 2021	Reg Rep Total Dec 2021	Reg Other Total Dec 2021
District 1	409,681	321,697	51,650	36,334	114,640	172,761	122,280
	82.480%	78.524%	12.607%	8.869%	27.983%	42.170%	29.848%
District 2	419,532	165,979	236,880	16,673	224,769	94,950	99,813
	78.727%	39.563%	56.463%	3.974%	53.576%	22.632%	23.792%
District 3	408,038	303,696	86,703	17,639	136,834	162,682	108,522
	79.313%	74.428%	21.249%	4.323%	33.535%	39.869%	26.596%
District 4	402,126	278,059	112,427	11,640	151,884	154,051	96,191
	81.787%	69.147%	27.958%	2.895%	37.770%	38.309%	23.921%
District 5	431,671	318,248	91,999	21,424	142,053	173,347	116,271
	81.828%	73.725%	21.312%	4.963%	32.908%	40.157%	26.935%
District 6	403,809	283,572	99,732	20,505	141,329	152,104	110,376
	81.610%	70.224%	24.698%	5.078%	34.999%	37.667%	27.334%
District 7	419,489	156,738	223,357	39,394	249,495	58,885	111,109
	81.855%	37.364%	53.245%	9.391%	59.476%	14.037%	26.487%
Grand Total	2,894,346	1,827,989	902,748	163,609	1,161,004	968,780	764,562

# Splits

## Plan: 221ES1-9 (Ivey) Original

	Total Population	Total White	Total Black	Total Asian	Total American Indian	Total Other	VAP Total	VAP White	VAP Black	VAP Asian	VAP American Indian	VAP Other	Reg Total Dec 2021	Reg White Dec 2021	Reg Black Dec 2021	Reg Other Dec 2021
District 1																
*Jefferson	236,507	151,183	31,178	11,529	4,170	38,447	189,251	126,561	22,883	8,705	3,151	27,951	144,652	112,830	12,959	18,863
*Orleans	26,987	21,886	1,563	1,051	335	2,152	21,162	17,448	1,144	749	262	1,559	19,102	16,562	816	1,724
Plaquemines	23,515	14,287	5,428	1,317	697	1,786	17,334	10,856	3,857	925	500	1,196	13,908	9,513	3,134	1,261
St. Bernard	43,764	24,497	12,309	1,381	947	4,630	31,775	18,992	7,944	982	688	3,169	25,653	18,233	5,497	1,923
St. Tammany	264,570	196,641	38,643	5,774	5,660	17,852	202,228	154,621	26,761	4,075	4,161	12,610	178,779	145,724	21,142	11,913
Washington	45,463	29,943	13,434	216	736	1,134	34,951	23,743	9,732	154	561	761	27,587	18,835	8,102	650
District 1	640,806	438,437	102,555	21,268	12,545	66,001	496,701	352,221	72,321	15,590	9,323	47,246	409,681	321,697	51,650	36,334
	100.000%	68.420%	16.004%	3.319%	1.958%	10.300%	100.000%	70.912%	14.560%	3.139%	1.877%	9.512%	82.480%	78.524%	12.607%	8.869%
District 2																
*Bossier	28,967	10,465	14,725	714	476	2,587	21,692	8,941	10,064	546	388	1,753	11,506	5,175	5,576	755
Caddo	237,848	103,457	119,304	4,034	3,840	7,213	182,407	85,059	86,359	3,008	2,958	5,023	151,296	73,113	71,249	6,934
Claiborne	14,170	7,263	6,360	88	185	274	11,507	6,258	4,824	55	140	230	8,598	4,632	3,820	146
Concordia	18,687	10,275	7,725	122	233	332	14,217	8,108	5,613	100	167	229	11,964	7,222	4,540	202
*East Baton Rouge	217,854	46,045	155,704	5,125	1,454	9,526	167,251	40,351	114,801	4,148	1,163	6,788	126,060	26,340	94,016	5,704
East Carroll	7,459	2,054	5,272	29	43	61	5,901	1,773	4,043	19	27	39	4,709	1,306	3,359	44
East Feliciana	19,539	11,516	7,341	91	262	329	16,183	9,740	5,918	61	198	266	13,600	7,959	5,186	455
Madison	10,017	3,475	6,363	20	59	100	7,435	2,906	4,391	9	48	81	7,278	2,494	4,674	110
*Morehouse	5,864	3,711	1,874	43	125	111	4,825	3,084	1,527	36	82	96	3,804	2,515	1,232	57
*Ouachita	70,195	15,957	50,285	1,345	573	2,035	51,954	13,907	34,901	1,106	429	1,611	41,699	9,828	30,299	1,572
Tensas	4,147	1,744	2,312	23	26	42	3,235	1,446	1,728	12	23	26	3,455	1,503	1,917	35
*Union	5,230	2,808	2,056	15	69	282	4,075	2,265	1,554	12	52	192	3,898	2,155	1,638	105
*Webster	28,282	16,479	10,768	148	456	431	21,895	13,123	7,998	113	371	290	17,220	10,732	6,154	334
West Carroll	9,751	7,894	1,425	27	180	225	7,532	6,223	1,010	20	136	143	7,038	5,913	1,040	85
West Feliciana	15,310	10,883	3,740	89	225	373	12,783	9,283	2,951	56	174	319	7,407	5,092	2,180	135
District 2	693,320	254,026	395,254	11,913	8,206	23,921	532,892	212,467	287,682	9,301	6,356	17,086	419,532	165,979	236,880	16,673
	100.000%	36.639%	57.009%	1.718%	1.184%	3.450%	100.000%	39.871%	53.985%	1.745%	1.193%	3.206%	78.727%	39.563%	56.463%	3.974%
District 3																
Acadia	57,576	44,480	10,864	238	573	1,421	42,943	34,071	7,383	173	400	916	37,678	30,555	6,407	716
Beauregard	36,549	29,529	4,649	402	1,052	917	27,489	22,304	3,495	269	773	648	22,294	18,771	2,369	1,154
Bienville	12,981	6,950	5,600	57	207	167	10,073	5,486	4,284	30	162	111	8,847	4,843	3,917	87
*Bossier	99,779	70,587	17,826	2,778	2,797	5,791	74,184	53,990	12,376	1,902	2,089	3,827	58,237	45,686	9,262	3,289
Calcasieu	216,785	139,772	59,386	4,702	3,536	9,389	163,166	108,789	41,898	3,359	2,604	6,516	120,511	85,659	29,513	5,339
Cameron	5,617	5,232	125	30	75	155	4,358	4,100	79	23	47	109	4,789	4,610	88	91
De Soto	26,812	15,284	9,973	117	740	698	20,440	11,909	7,425	86	557	463	18,713	11,330	6,810	573
Jefferson Davis	32,250	25,066	5,837	183	472	692	24,039	19,121	4,006	111	325	476	20,013	16,350	3,202	461

# Splits

## Plan: 221ES1-9 (Ivey) Original

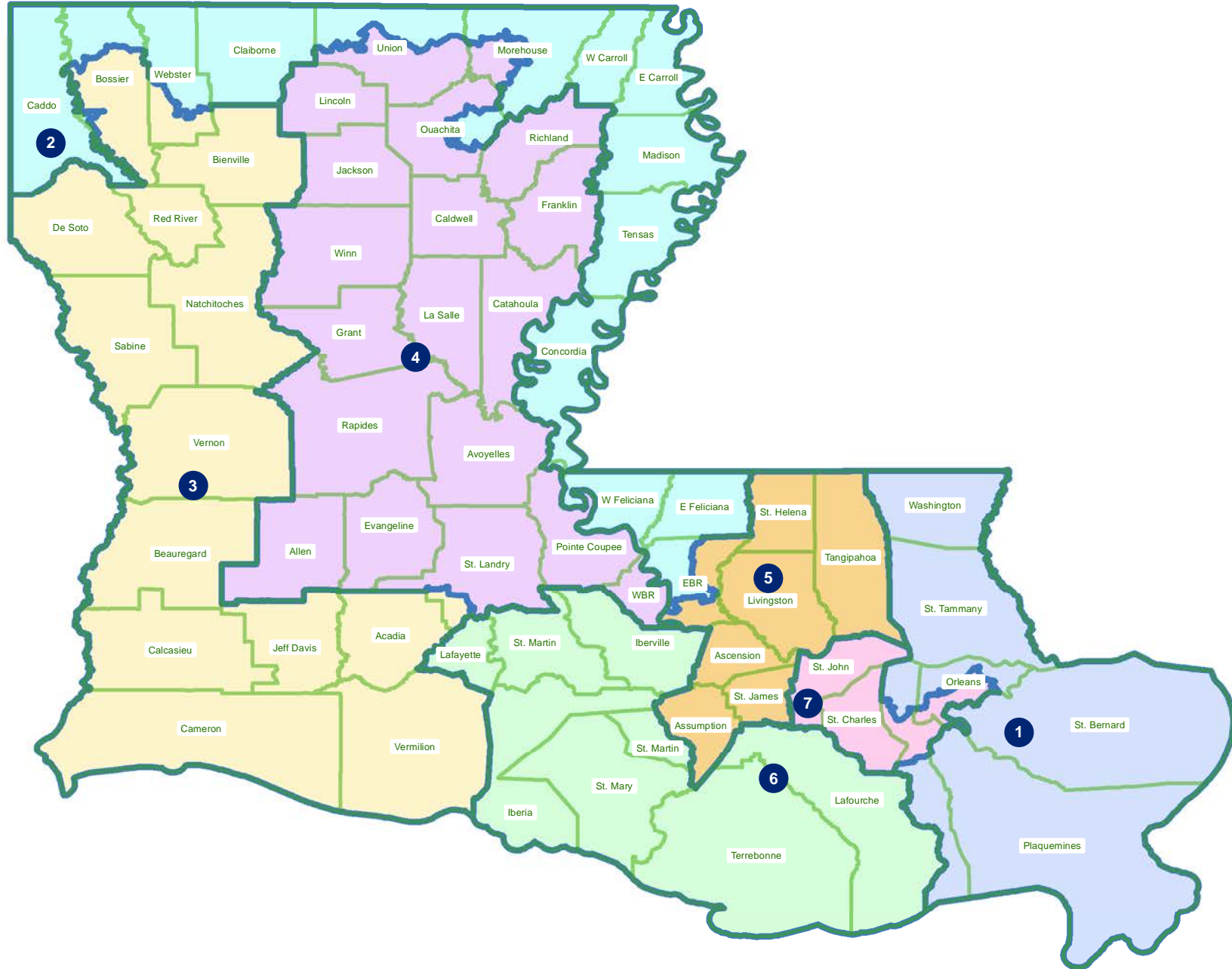
	Total Population	Total White	Total Black	Total Asian	Total American Indian	Total Other	VAP Total	VAP White	VAP Black	VAP Asian	VAP American Indian	VAP Other	Reg Total Dec 2021	Reg White Dec 2021	Reg Black Dec 2021	Reg Other Dec 2021
District 3																
Natchitoches	37,515	19,361	15,725	255	861	1,313	29,349	16,010	11,415	198	683	1,043	23,107	12,850	9,224	1,033
Red River	7,620	4,195	3,106	25	171	123	5,714	3,338	2,164	3	116	93	5,631	3,130	2,418	83
Sabine	22,155	15,036	3,861	94	2,723	441	17,064	12,054	2,655	66	1,970	319	14,547	11,023	2,184	1,340
*St. Landry	13,098	8,290	3,981	53	130	644	9,513	6,294	2,700	37	92	390	7,325	4,996	2,119	210
Vermilion	57,359	44,477	8,810	1,447	623	2,002	43,012	34,363	5,787	1,037	488	1,337	36,769	30,505	4,994	1,270
Vernon	48,750	35,087	7,611	1,442	1,600	3,010	36,261	26,765	5,133	1,074	1,160	2,129	24,060	19,182	3,011	1,867
*Webster	8,685	6,256	1,911	60	231	227	6,858	5,021	1,466	41	187	143	5,517	4,206	1,185	126
District 3	683,531	469,602	159,265	11,883	15,791	26,990	514,463	363,615	112,266	8,409	11,653	18,520	408,038	303,696	86,703	17,639
	100.000%	68.702%	23.300%	1.738%	2.310%	3.949%	100.000%	70.679%	21.822%	1.635%	2.265%	3.600%	79.313%	74.428%	21.249%	4.323%
District 4																
Allen	22,750	16,327	4,490	246	947	740	17,510	12,751	3,275	182	646	656	12,201	9,478	2,217	506
Avoyelles	39,693	25,625	11,678	434	767	1,189	30,578	20,269	8,311	379	570	1,049	23,426	16,534	6,294	598
Caldwell	9,645	7,646	1,632	51	150	166	7,478	5,969	1,224	46	116	123	6,031	5,124	818	89
Catahoula	8,906	5,776	2,395	46	119	570	6,951	4,557	1,736	33	87	538	6,467	4,639	1,770	58
Evangeline	32,350	21,354	9,235	241	280	1,240	24,408	16,460	6,483	187	217	1,061	20,553	14,566	5,643	344
Franklin	19,774	12,492	6,802	70	205	205	15,028	9,901	4,779	44	153	151	13,159	9,015	4,034	110
Grant	22,169	17,709	3,335	133	644	348	17,527	13,964	2,717	97	507	242	12,688	11,174	1,176	338
Jackson	15,031	9,967	4,166	175	255	468	11,783	7,967	3,125	140	174	377	9,449	6,647	2,610	192
La Salle	14,791	11,348	1,422	283	372	1,366	11,563	8,636	1,065	264	271	1,327	8,792	7,978	637	177
Lincoln	48,396	26,034	19,364	892	662	1,444	38,655	21,306	15,119	744	526	960	25,649	15,672	9,016	961
*Morehouse	19,765	8,570	10,610	117	245	223	15,237	7,011	7,773	81	197	175	13,118	5,990	6,899	229
*Ouachita	90,173	72,588	10,932	1,443	2,088	3,122	68,246	56,067	7,389	1,012	1,630	2,148	58,053	50,687	5,359	2,007
Pointe Coupee	20,758	12,395	7,504	107	159	593	16,250	10,108	5,502	91	119	430	14,675	9,320	5,121	234
Rapides	130,023	77,510	42,592	2,428	3,102	4,391	98,792	61,373	30,205	1,786	2,334	3,094	80,176	52,832	23,775	3,569
Richland	20,043	11,785	7,603	83	258	314	15,383	9,338	5,546	66	203	230	13,662	8,470	4,961	231
*St. Landry	69,442	35,321	31,855	446	506	1,314	52,298	27,915	22,797	316	359	911	47,157	25,097	20,886	1,174
*Union	15,877	11,652	3,168	47	269	741	12,557	9,542	2,307	27	202	479	11,323	8,911	2,054	358
West Baton Rouge	27,199	14,307	11,170	287	326	1,109	20,526	11,146	8,149	209	219	803	17,141	9,937	6,865	339
Winn	13,755	8,594	3,727	210	263	961	10,906	6,932	2,695	170	207	902	8,406	5,988	2,292	126
District 4	640,540	407,000	193,680	7,739	11,617	20,504	491,676	321,212	140,197	5,874	8,737	15,656	402,126	278,059	112,427	11,640
	100.000%	63.540%	30.237%	1.208%	1.814%	3.201%	100.000%	65.330%	28.514%	1.195%	1.777%	3.184%	81.787%	69.147%	27.958%	2.895%
District 5																
Ascension	126,500	81,141	32,216	2,300	2,004	8,839	91,957	61,136	22,139	1,514	1,390	5,778	79,917	56,800	18,814	4,303
Assumption	21,039	13,722	6,220	96	258	743	16,616	11,145	4,707	57	197	510	14,439	9,700	4,510	229
*East Baton Rouge	238,927	150,024	57,694	11,300	3,273	16,636	188,361	123,530	41,989	8,451	2,584	11,807	153,204	111,892	30,659	10,653

# Splits

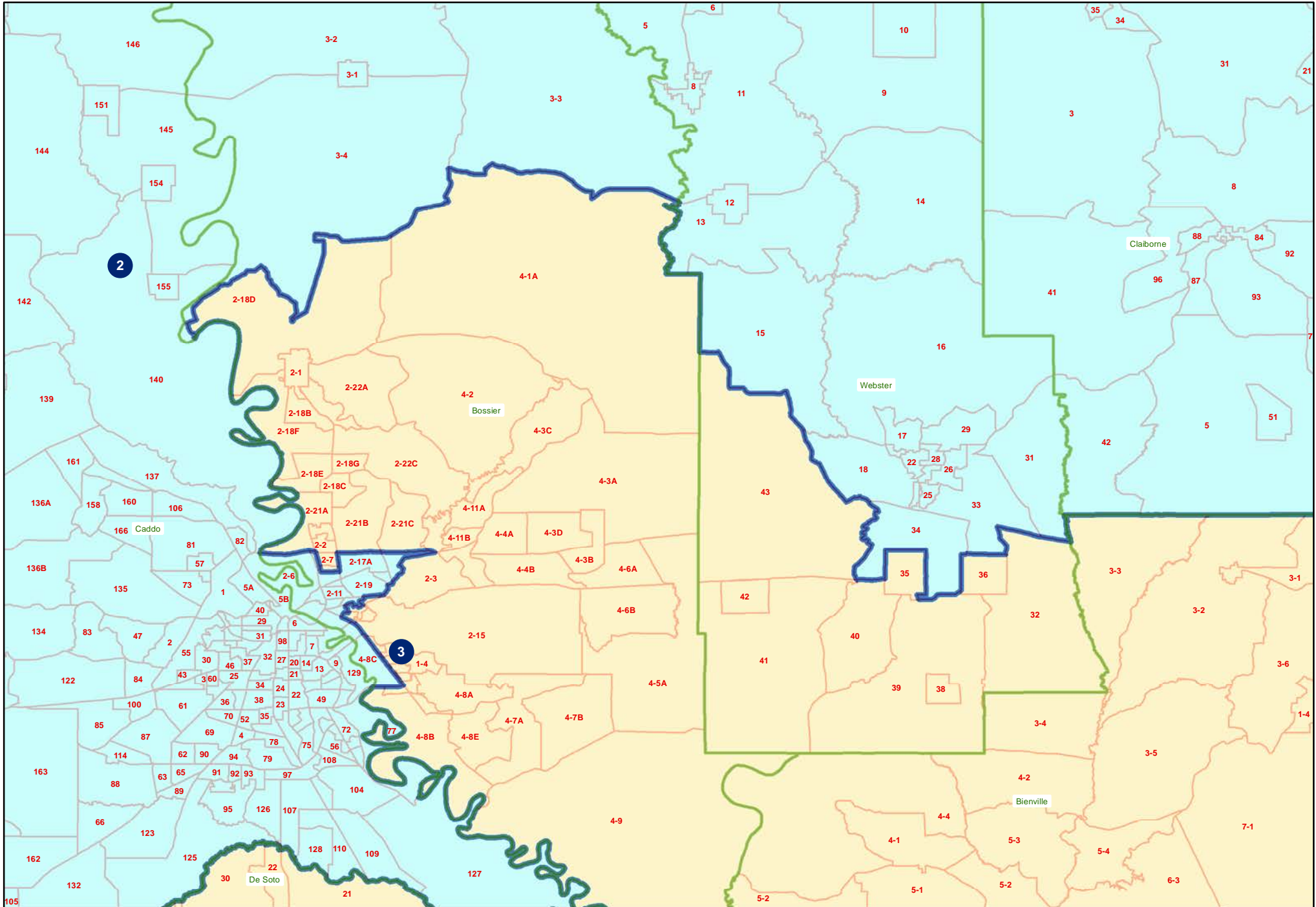
## Plan: 221ES1-9 (Ivey) Original

	Total Population	Total White	Total Black	Total Asian	Total American Indian	Total Other	VAP Total	VAP White	VAP Black	VAP Asian	VAP American Indian	VAP Other	Reg Total Dec 2021	Reg White Dec 2021	Reg Black Dec 2021	Reg Other Dec 2021
District 5																
Livingston	142,282	116,855	12,658	1,697	3,111	7,961	105,141	88,432	8,136	1,099	2,311	5,163	84,568	76,062	5,425	3,081
St. Helena	10,920	4,527	6,031	39	134	189	8,463	3,805	4,371	28	109	150	8,321	3,628	4,565	128
St. James	20,192	9,973	9,762	60	82	315	15,505	7,883	7,297	31	64	230	14,966	7,254	7,501	211
Tangipahoa	133,157	81,336	41,879	1,474	2,454	6,014	101,491	65,205	29,217	1,100	1,827	4,142	76,256	52,912	20,525	2,819
District 5	693,017	457,578	166,460	16,966	11,316	40,697	527,534	361,136	117,856	12,280	8,482	27,780	431,671	318,248	91,999	21,424
	100.000%	66.027%	24.020%	2.448%	1.633%	5.872%	100.000%	68.457%	22.341%	2.328%	1.608%	5.266%	81.828%	73.725%	21.312%	4.963%
District 6																
Iberia	69,929	39,206	24,556	2,123	794	3,250	52,791	31,295	17,069	1,562	581	2,284	44,526	28,287	14,352	1,887
Iberville	30,241	14,833	13,730	202	274	1,202	24,086	12,462	10,232	149	221	1,022	20,462	10,132	9,897	433
Lafayette	241,753	153,363	65,136	6,454	3,210	13,590	183,875	121,608	45,917	4,664	2,387	9,299	153,493	108,645	36,481	8,367
Lafourche	97,557	71,710	15,855	1,025	4,224	4,743	74,619	56,838	11,077	738	2,777	3,189	58,278	48,467	7,164	2,647
St. Martin	51,767	33,259	15,921	597	539	1,451	39,404	26,278	11,293	407	413	1,013	35,120	23,934	10,381	805
St. Mary	49,406	26,949	15,991	835	1,670	3,961	37,521	21,594	11,520	593	1,173	2,641	30,210	18,712	9,891	1,607
Terrebonne	109,580	69,934	23,147	1,743	8,637	6,119	82,505	55,631	15,796	1,239	5,750	4,089	61,720	45,395	11,566	4,759
District 6	650,233	409,254	174,336	12,979	19,348	34,316	494,801	325,706	122,904	9,352	13,302	23,537	403,809	283,572	99,732	20,505
	100.000%	62.940%	26.811%	1.996%	2.976%	5.277%	100.000%	65.826%	24.839%	1.890%	2.688%	4.757%	81.610%	70.224%	24.698%	5.078%
District 7																
*Jefferson	204,274	69,752	95,039	11,495	3,516	24,472	155,403	57,574	69,292	8,987	2,684	16,866	118,449	46,786	56,617	15,046
*Orleans	357,010	104,576	217,406	11,805	3,331	19,892	285,034	92,804	164,924	9,771	2,686	14,849	237,142	75,424	140,709	21,009
St. Charles	52,549	33,550	13,928	837	925	3,309	39,541	26,154	9,890	529	667	2,301	34,985	24,309	8,797	1,879
St. John the Baptist	42,477	13,877	25,196	403	465	2,536	32,503	11,622	18,437	323	350	1,771	28,913	10,219	17,234	1,460
District 7	656,310	221,755	351,569	24,540	8,237	50,209	512,481	188,154	262,543	19,610	6,387	35,787	419,489	156,738	223,357	39,394
	100.000%	33.788%	53.568%	3.739%	1.255%	7.650%	100.000%	36.714%	51.230%	3.826%	1.246%	6.983%	81.855%	37.364%	53.245%	9.391%

221ES1-9 (Ivey) Original  
Statewide

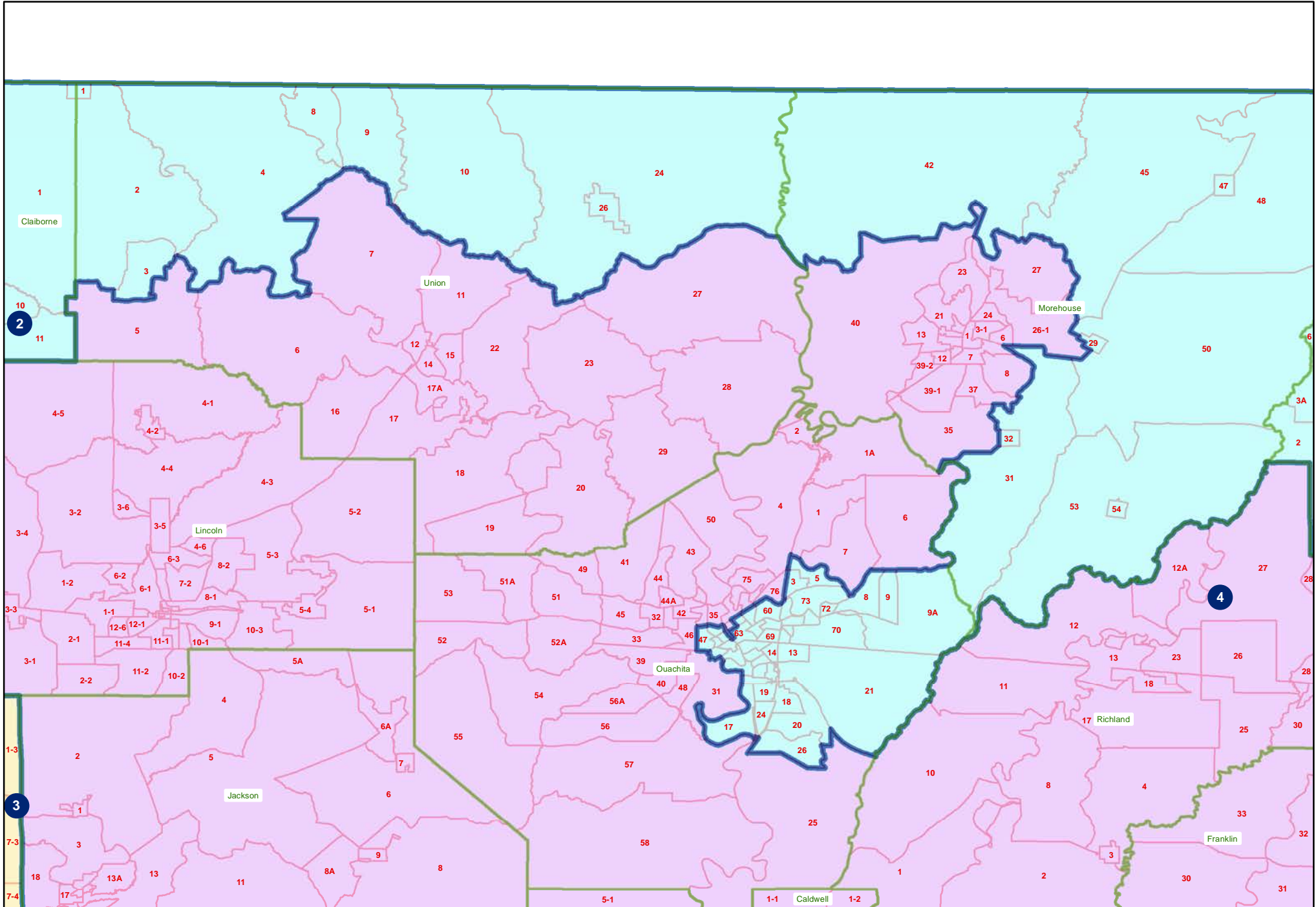


# 221ES1-9 (Ivey) Original Bossier/Webster



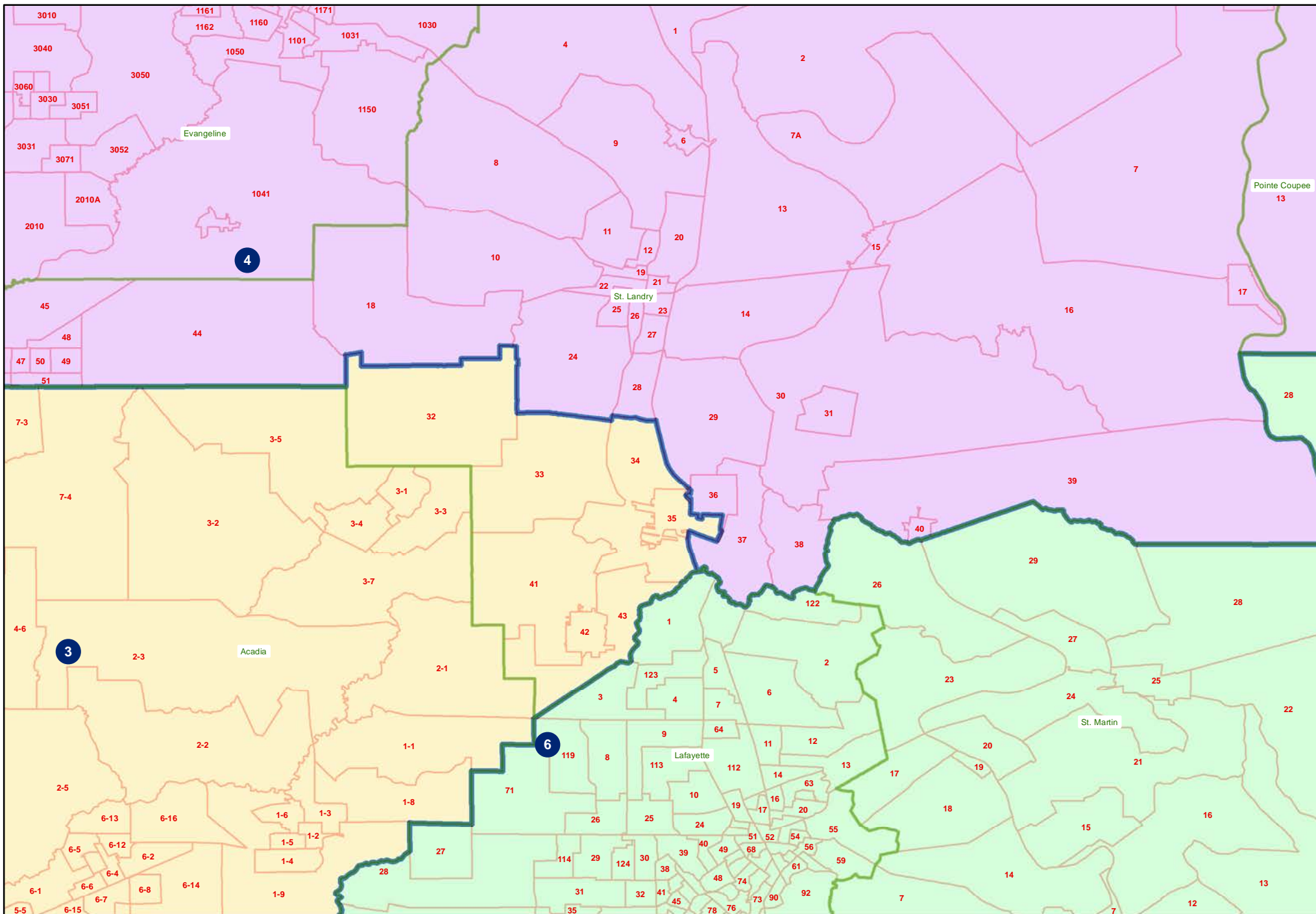


221ES1-9 (Ivey) Original  
Union/Morehouse/Ouachita

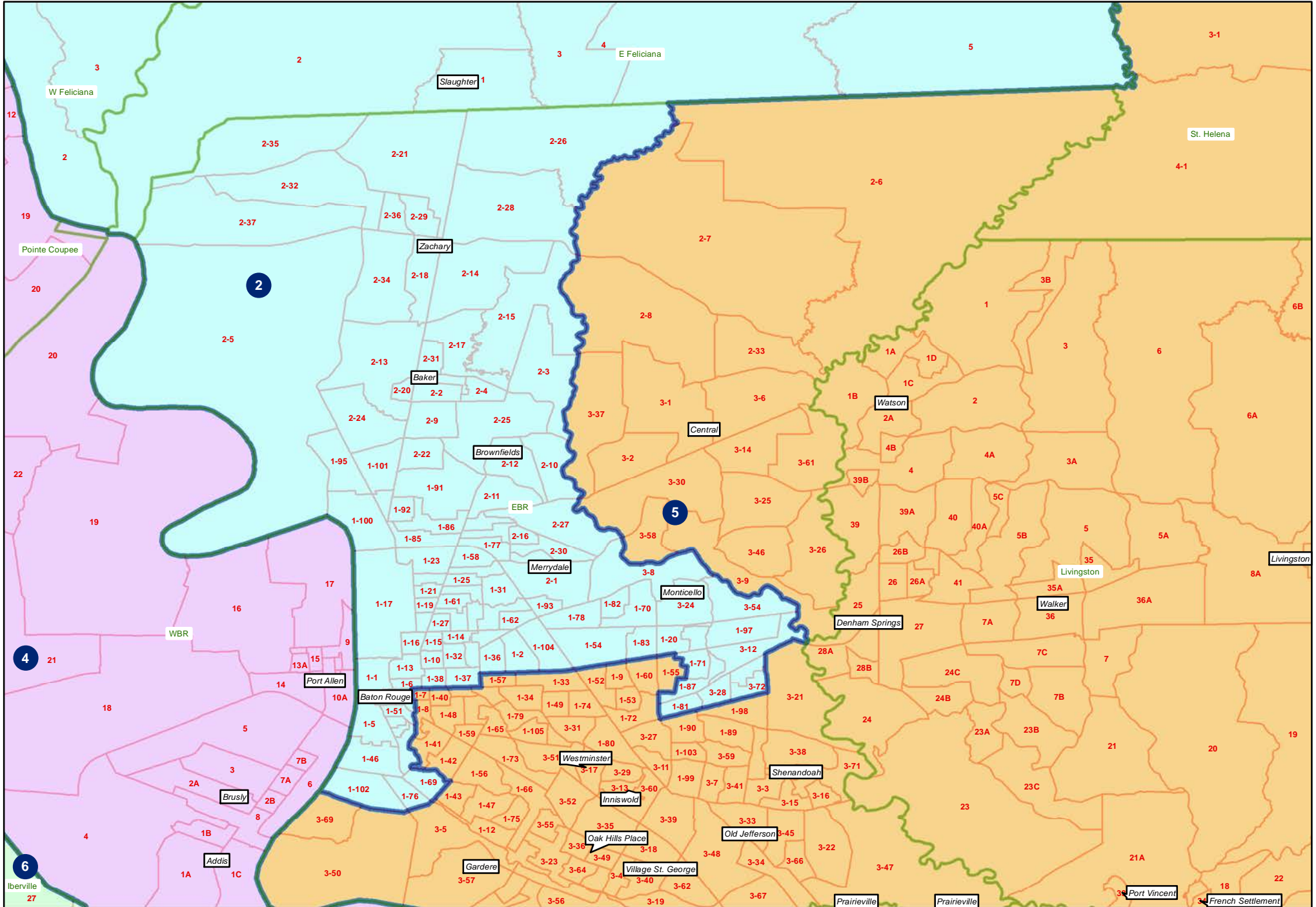




# 221ES1-9 (Ivey) Original St. Landry



# 221ES1-9 (Ivey) Original East Baton Rouge





# 221ES1-9 (Ivey) Original Jefferson/Orleans

