

FOR OFFICE USE ONLY	

HOUSE FLOOR AMENDMENTS

2022 First Extraordinary Session

Amendments proposed by Representative Cox to Original House Bill No. 14 by Representative Schexnayder

1 AMENDMENT NO. 1

2 On page 1, delete lines 12 through 14 and on page 2, delete lines 1 through 24 and insert the
3 following:

4 "(1) District 1 is composed of Precincts 2-1, 2-18D, 3-1, 3-2, 3-3, 3-4, and
5 4-1A of Bossier Parish and Precincts 66, 105, 107, 110, 123, 125, 126, 132, 133, 134,
6 136A, 136B, 139, 140, 142, 143, 144, 145, 146, 149, 151, 154, 155, 156, 157, 161,
7 162, and 165 of Caddo Parish.

8 (2) District 2 is composed of Precincts 2-5A, 2-6, 2-8, 2-12A, 2-12B, 2-12C,
9 2-13, 2-14, 2-23, and 4-8D of Bossier Parish and Precincts 6, 7, 8, 15, 17, 27, 28, 29,
10 30, 31, 32, 37, 39, 40, 41, 44, 45, 46, 54, 64, 67, 71, 98, 99, and 111 of Caddo Parish.

11 (3) District 3 is composed of Precincts 23, 25, 34, 35, 36, 38, 50, 51, 52, 53,
12 56, 58, 59, 60, 68, 75, 78, 79, 80, 97, 101, 104, 108, 109, 112, and 115 of Caddo
13 Parish.

14 (4) District 4 is composed of Precincts 1, 2, 5A, 5B, 43, 47, 55, 57, 73, 74,
15 81, 82, 83, 84, 85, 106, 122, 135, 137, 138, 158, 160, 163, and 166 of Caddo Parish.

16 (5) District 5 is composed of Precincts 3, 4, 61, 62, 63, 65, 69, 70, 86, 87, 88,
17 89, 90, 91, 92, 93, 94, 95, 100, 103, and 114 of Caddo Parish.

18 (6) District 6 is composed of Precincts 1-1, 1-2, 1-3, 1-3B, 1-4, 1-5, and
19 4-8C of Bossier Parish and Precincts 9, 10, 11, 12, 13, 14, 16, 20, 21, 22, 24, 26, 48,
20 49, 72, 76, 77, 102, 113, 127, and 129 of Caddo Parish.

21 (7) District 7 is composed of Precinct 128 of Caddo Parish; Precincts 10, 11,
22 16, 21, 22, 23, 28, 30, 35, 37, 46, 48, 49, 51, and 53 of De Soto Parish; Sabine
23 Parish; and Precincts 1-9, 2-1, 2-1A, 2-2, 2-2A, 2-3, and 2-3A of Vernon Parish.

24 (8) District 8 is composed of Precincts 2-2, 2-4, 2-7, 2-9, 2-10, 2-11, 2-11A,
25 2-17A, 2-18B, 2-18C, 2-18E, 2-18F, 2-18G, 2-19, 2-21A, 2-21B, 2-21C, 2-21D,
26 2-22A, 2-22B, and 2-22C of Bossier Parish.

27 (9) District 9 is composed of Precincts 1-3A, 2-3, 2-3A, 2-15, 2-16, 2-17B,
28 2-20, 4-2, 4-3A, 4-3B, 4-3C, 4-3D, 4-4A, 4-4B, 4-5A, 4-6A, 4-6B, 4-7A, 4-7B,
29 4-8A, 4-8E, 4-11A, 4-11B, and 4-11C of Bossier Parish.

30 (10) District 10 is composed of Precincts 4-8B, 4-8G, 4-9, and 4-10 of
31 Bossier Parish and Webster Parish."

32 AMENDMENT NO. 2

33 On page 3, delete lines 4 through 7 and insert the following:

34 "(13) District 13 is composed of Precincts 1-3, 1-4, 3-4, 3-5, 3-6, 4-1, 4-2,
35 4-4, 5-1, 5-2, 5-3, 5-4, 6-1, 6-2, 6-3, 6-4, 7-1, 7-2, 7-3, 7-4, and 7-5 of Bienville
36 Parish; Jackson Parish; Precincts 2-1, 2-2, 2-3, and 2-5 of Natchitoches Parish;
37 Precincts 1-1, 1-2, 2-1, 2-3, 3-1, 3-2, 3-3, 7-1, and 7-2 of Red River Parish; and Winn
38 Parish."

1 AMENDMENT NO. 3

2 On page 4, delete lines 5 through 26, and insert the following:

3 "(22) District 22 is composed of Grant Parish; Precincts 2-1, 3-1, 3-2, 4-3,
4 7-2, 8-2, 8-3, 8-5, 8-6, 8-7, and 9-5 of La Salle Parish; Precincts 1-2, 2-4, 2-6, 2-9,
5 3-1, 3-3, 3-5, 3-6, 3-8, 3-9, 3-10, 4-5, 4-6, 4-7, 4-8, and 4-9 of Natchitoches Parish;
6 and Precincts S1, S2, S4, S5, S6A, S6B, S8, and S9 of Rapides Parish.7 (23) District 23 is composed of Precincts 1, 4, 5, 6, 9, 26, 31, 32, 33, 34, 38,
8 42, 44, 55, 56, 59, 60, and 63 of De Soto Parish; Precincts 1-1, 1-1A, 1-3, 1-3A, 1-4,
9 1-4A, 1-5, 1-5A, 1-6, 1-7, 1-8, 1-9, 1-9A, 1-10, 1-10A, 1-10B, 1-11, 1-12, 1-13,
10 1-14, 2-7, 2-7A, 2-8, 3-2, 3-4, 3-7, 4-1, 4-2, 4-3, and 4-4 of Natchitoches Parish; and
11 Precincts 4-1, 4-2, 4-3, 4-5, 5-1, 5-2, 6-1, 6-2, and 7-3 of Red River Parish.12 (24) District 24 is composed of Precincts 2-7, 3-8, 3-9, 3-12, 3-14, 3-15,
13 3-18, 3-19, 3-20, 4-3, 4-5, 4-6, 4-7, 4-8, 5-8, 5-9, 5-10, 5-11, 5-12, 5-13, 5-15, 6-7,
14 6-8, 6-9, 7-12, 7-15, 7-16, 7-21, 7-27B, 16-8, 16-9, 17-8, 17-9, 17-10, 17-11, 17-12,
15 17-13, 17-13A, 17-14, 17-15, and 17-16 of Orleans Parish.16 (25) District 25 is composed of Precincts C22, C23, C30, C31, C32, C33,
17 C34, C35, C36, C37-A, C37-B, C41, C42, S7, S10, S11, S13, S14, S15, S17, S18,
18 S19, S20, S21, S22, S23, S24, S25, S26, S27, S28, and S29 of Rapides Parish and
19 Precincts 4-3E, 5-1, 5-1A, 5-2, 5-2A, 6-1, 6-2, 6-3, 6-4, 7-3, 7-4A, 8-1, 8-2 and 8-3
20 of Vernon Parish.21 (26) District 26 is composed of Precincts C1, C2, C3, C4, C5, C6, C7, C8,
22 C9, C10, C11-A, C11-B, C13, C14, C15, C17, C18, C19, C20, C21, C24, C25, C26,
23 C27, C28, C38-A, C38-B, C39, C40, N1, N2, N3, N4, and N5 of Rapides Parish."24 AMENDMENT NO. 4

25 On page 5, delete lines 7 through 12 and insert the following:

26 "(30) District 30 is composed of Precincts 25, 25A, 25B, 26, 27, 27B, and
27 28 of Beauregard Parish and Precincts 1-1, 1-1B, 1-2, 1-2A, 1-3, 1-3B, 1-3C, 1-3D,
28 1-4, 1-4A, 1-4B, 1-4C, 1-4D, 1-5, 1-5A, 1-6, 1-6A, 1-6B, 1-7, 1-7A, 1-7B, 1-8, 1-8A,
29 1-8C, 1-8E, 1-8F, 2-4, 2-4E, 3-1, 3-2, 3-3, 3-4, 3-5, 4-1, 4-2, 4-3, 4-3A, 4-3C, 4-3F,
30 4-3G, 4-3J, 4-3K, 4-3L, 4-3M, 4-3N, 7-1, 7-2, 7-2A, 7-4, 7-5, 7-5A, and 7-5C of
31 Vernon Parish."32 AMENDMENT NO. 5

33 On page 5, delete lines 16 through 18 and insert the following:

34 "(32) District 32 is composed of Precincts 1-1, 1-3, 1-4, 2-2, 2-2-A, 2-3,
35 2-4-C, 2-4-O, 2-5, 2-6, 3-1, and 3-2 of Allen Parish; Precincts 1, 2, 3, 4, 5, 6, 7, 9,
36 10, 11, 13, 14, 14A, 15, 16, 16A, 16B, 17, 17A, 18, 18A, 19, 19C, 20, 21, 22, 27A,
37 27D, and 30 of Beauregard Parish; and Precincts 560, 561, 562, 600, 601, 602, 603,
38 660, 661, 662, 663, 664, and 760 of Calcasieu Parish."39 AMENDMENT NO. 6

40 On page 6, delete lines 6 through 12 and insert the following:

41 "(38) District 38 is composed of Precincts 1-2, 1-5, 1-6, 2-1, 4-2, 4-3, 5-2,
42 5-3, 5-4-C, 5-4-O, 5-5, 5-7, 5-8A, 5-9, 5-10, 5-12, and 5-13 of Allen Parish and
43 Precincts 1010, 1020, 1030, 1031, 1040, 1041, 1050, 1060, 1080, 1081, 1090, 1091,
44 1100, 1101, 1110, 1120, 1130, 1140, 1150, 1160, 1161, 1162, 1170, 1171, 2010,
45 2010A, 3010, 3020, 3030, 3031, 3032, 3040, 3050, 3051, 3052, 3060, 3070, 3071,
46 4001, 4010, 4011, 4012, 4020, 4021, 4030, 4040, 5004, 5010, 5020, 5030, 5040,
47 5041, and 5050 of Evangeline Parish."

1 AMENDMENT NO. 7

2 On page 6, delete lines 17 through 20 and insert the following:

3 "(41) District 41 is composed of Precincts 2-1, 2-3, 3-1, 3-2, 3-3, 3-4, 3-5,
4 3-7, 4-1, 4-2, 4-6, 7-2, 7-3, and 7-4 of Acadia Parish; Precincts 2020, 2030, and 2040
5 of Evangeline Parish; and Precincts 32, 33, 41, 42, 43, 44, 45, 46, 47, 48, 49, 50, 51,
6 and 52 of St. Landry Parish."

Differing Assignments

DB: LA 2020 12 - CENSUS

Plan: HFAHB14 362 77 (Cox)

Page: 1 of 8

Plan Type: House

	HFAHB14 362 77 (Cox)	HB 14 Engrossed (Schexnayder) 221ES-1
Allen		
1-2	38	32
1-5	38	32
1-6	38	32
2-1	38	32
4-2	38	32
4-3	38	32
5-2	38	32
5-3	38	32
5-4-C	38	32
5-4-O	38	32
5-5	38	32
5-7	38	32
5-8A	38	32
5-9	38	32
5-10	38	32
5-12	38	32
5-13	38	32
Beauregard		
2	32	24
3	32	24
4	32	24
5	32	24
6	32	24
7	32	30
9	32	24
15	32	30
16	32	30
16A	32	30
16B	32	30
17	32	30
17A	32	30
18	32	30
18A	32	30
19	32	24
19C	32	24
20	32	24
21	32	24
27A	32	30
27D	32	30
30	32	30
Bossier		
1-1	6	5
1-2	6	5
1-3	6	5

Differing Assignments

DB: LA 2020 12 - CENSUS

Plan: HFAHB14 362 77 (Cox)

Page: 2 of 8

Plan Type: House

	HFAHB14 362 77 (Cox)	HB 14 Engrossed (Schexnayder) 221ES-1
1-3A	9	5
1-3B	6	5
1-4	6	9
1-5	6	5
2-1	1	8
2-14	2	9
2-18D	1	10
3-1	1	10
3-2	1	10
3-3	1	10
3-4	1	10
4-1A	1	10
4-7A	9	5
4-7B	9	5
4-8B	10	5
4-8C	6	5
4-8E	9	5
4-8G	10	5
4-9	10	5
4-10	10	5
Caddo		
3	5	3
4	5	3
5B	4	2
56	3	6
61	5	4
62	5	4
63	5	1
65	5	4
68	3	6
69	5	4
70	5	3
75	3	6
77	6	5
82	4	1
85	4	1
86	5	4
87	5	4
88	5	1
89	5	7
90	5	4
91	5	3
92	5	3
93	5	3

Differing Assignments

DB: LA 2020 12 - CENSUS

Plan: HFAHB14 362 77 (Cox)

Page: 3 of 8

Plan Type: House

	HFAHB14 362 77 (Cox)	HB 14 Engrossed (Schexnayder) 221ES-1
94	5	3
95	5	3
97	3	5
100	5	4
101	3	6
103	5	3
104	3	6
107	1	5
108	3	6
109	3	5
110	1	5
112	3	6
114	5	4
115	3	5
123	1	7
125	1	7
126	1	5
127	6	5
128	7	5
137	4	1
138	4	1
158	4	1
160	4	1
163	4	1
166	4	1
De Soto		
1	23	7
4	23	7
5	23	7
6	23	7
9	23	7
26	23	7
31	23	7
32	23	7
33	23	7
34	23	7
38	23	7
42	23	7
44	23	7
55	23	7
56	23	7
59	23	7
60	23	7
63	23	7

Evangeline

Differing Assignments

DB: LA 2020 12 - CENSUS

Plan: HFAHB14 362 77 (Cox)

Page: 4 of 8

Plan Type: House

	HFAHB14 362 77 (Cox)	HB 14 Engrossed (Schexnayder) 221ES-1
2010	38	41
Natchitoches		
1-1	23	25
1-1A	23	25
1-2	22	13
1-3	23	22
1-3A	23	22
1-4	23	22
1-4A	23	22
1-5	23	25
1-5A	23	25
1-6	23	22
1-7	23	22
1-8	23	25
1-9	23	25
1-9A	23	25
1-10	23	25
1-10A	23	25
1-10B	23	25
1-11	23	22
1-12	23	22
1-13	23	22
1-14	23	25
2-4	22	13
2-6	22	13
2-7	23	13
2-7A	23	13
2-8	23	13
2-9	22	13
3-1	22	25
3-2	23	25
3-3	22	25
3-4	23	25
3-5	22	25
3-6	22	25
3-7	23	25
3-8	22	25
3-9	22	25
3-10	22	25
4-1	23	25
4-2	23	25
4-3	23	25
4-4	23	25
4-5	22	25

Differing Assignments

DB: LA 2020 12 - CENSUS

Plan: HFAHB14 362 77 (Cox)

Page: 5 of 8

Plan Type: House

	HFAHB14 362 77 (Cox)	HB 14 Engrossed (Schexnayder) 221ES-1
4-6	22	25
4-7	22	25
4-8	22	25
Orleans		
2-7	24	23
3-8	24	23
3-9	24	23
3-12	24	23
3-14	24	23
3-15	24	23
3-18	24	23
3-19	24	23
3-20	24	23
4-3	24	23
4-5	24	23
4-6	24	23
4-7	24	23
4-8	24	23
5-8	24	23
5-9	24	23
5-10	24	23
5-11	24	23
5-12	24	23
5-13	24	23
5-15	24	23
6-7	24	23
6-8	24	23
6-9	24	23
7-12	24	23
7-15	24	23
7-16	24	23
7-21	24	23
7-27B	24	23
16-8	24	23
16-9	24	23
17-8	24	23
17-9	24	23
17-10	24	23
17-11	24	23
17-12	24	23
17-13	24	23
17-13A	24	23
17-14	24	23
17-15	24	23

Differing Assignments

DB: LA 2020 12 - CENSUS

Plan: HFAHB14 362 77 (Cox)

Page: 6 of 8

Plan Type: House

	HFAHB14 362 77 (Cox)	HB 14 Engrossed (Schexnayder) 221ES-1
17-16	24	23
Rapides		
C32	25	26
S1	22	25
S2	22	25
S4	22	25
S5	22	25
S6A	22	25
S6B	22	25
S7	25	38
S8	22	25
S9	22	25
S10	25	38
S17	25	38
S18	25	38
S19	25	38
S20	25	38
S21	25	38
S22	25	38
S23	25	38
S24	25	38
S25	25	38
S26	25	38
S27	25	38
S28	25	38
S29	25	38
Red River		
1-1	13	5
1-2	13	5
2-1	13	5
2-3	13	5
3-1	13	5
3-2	13	5
3-3	13	5
4-1	23	5
4-2	23	5
4-3	23	5
4-5	23	5
5-1	23	5
5-2	23	5
6-1	23	5
6-2	23	5
7-1	13	5
7-2	13	5
7-3	23	5

Differing Assignments

DB: LA 2020 12 - CENSUS

Plan: HFAHB14 362 77 (Cox)

Page: 7 of 8

Plan Type: House

	HFAHB14 362 77 (Cox)	HB 14 Engrossed (Schexnayder) 221ES-1
Sabine		
1-1	7	24
1-2	7	24
1-3	7	24
2-1	7	24
2-2	7	24
2-2A	7	24
2-3	7	24
2-4	7	24
2-4A	7	24
2-5	7	24
2-6	7	24
2-6A	7	24
3-2	7	24
3-6	7	24
3-6A	7	24
3-7	7	24
3-7B	7	24
3-7X	7	24
4-1	7	24
5-3	7	24
5-8	7	24
Vernon		
1-5	30	24
1-5A	30	24
1-7	30	24
1-9	7	24
2-1	7	24
2-1A	7	24
2-2	7	24
2-2A	7	24
2-3	7	24
2-3A	7	24
2-4	30	24
2-4E	30	24
3-1	30	24
3-2	30	24
3-3	30	24
3-4	30	24
3-5	30	24
4-3E	25	24
4-3L	30	24
4-3N	30	24
5-1	25	24
5-1A	25	24

Differing Assignments

	HFAHB14 362 77 (Cox)	HB 14 Engrossed (Schexnayder) 221ES-1
5-2	25	24
5-2A	25	24
6-1	25	24
6-2	25	24
6-3	25	24
6-4	25	24
7-3	25	24
7-4A	25	24
8-1	25	24
8-2	25	24
8-3	25	24

Plan Statistics

Plan: HFAHB14 362 77 (Cox)

<u>Districts:</u>	<u># of Members</u>	<u>Actual Population</u>	<u>Ideal Population</u>	<u>Absolute Deviation</u>	<u>Relative Deviation</u>
District 1	1	44,565	44,359	206	0.464%
District 2	1	44,002	44,359	-357	-0.805%
District 3	1	44,719	44,359	360	0.812%
District 4	1	44,702	44,359	343	0.773%
District 5	1	43,899	44,359	-460	-1.037%
District 6	1	45,366	44,359	1,007	2.270%
District 7	1	45,047	44,359	688	1.551%
District 8	1	43,277	44,359	-1,082	-2.439%
District 9	1	45,100	44,359	741	1.670%
District 10	1	44,890	44,359	531	1.197%
District 11	1	42,458	44,359	-1,901	-4.285%
District 12	1	45,889	44,359	1,530	3.449%
District 13	1	42,375	44,359	-1,984	-4.473%
District 14	1	44,279	44,359	-80	-0.180%
District 15	1	43,934	44,359	-425	-0.958%
District 16	1	42,328	44,359	-2,031	-4.579%
District 17	1	42,807	44,359	-1,552	-3.499%
District 18	1	46,494	44,359	2,135	4.813%
District 19	1	42,717	44,359	-1,642	-3.702%
District 20	1	42,204	44,359	-2,155	-4.858%
District 21	1	44,795	44,359	436	0.983%
District 22	1	43,695	44,359	-664	-1.497%
District 23	1	42,243	44,359	-2,116	-4.770%
District 24	1	42,708	44,359	-1,651	-3.722%
District 25	1	43,493	44,359	-866	-1.952%
District 26	1	43,118	44,359	-1,241	-2.798%
District 27	1	44,225	44,359	-134	-0.302%
District 28	1	42,851	44,359	-1,508	-3.400%
District 29	1	44,544	44,359	185	0.417%
District 30	1	45,708	44,359	1,349	3.041%
District 31	1	46,510	44,359	2,151	4.849%
District 32	1	45,754	44,359	1,395	3.145%
District 33	1	44,243	44,359	-116	-0.262%
District 34	1	45,879	44,359	1,520	3.427%
District 35	1	46,088	44,359	1,729	3.898%
District 36	1	45,062	44,359	703	1.585%
District 37	1	45,146	44,359	787	1.774%
District 38	1	43,102	44,359	-1,257	-2.834%
District 39	1	42,262	44,359	-2,097	-4.727%
District 40	1	45,296	44,359	937	2.112%
District 41	1	43,823	44,359	-536	-1.208%
District 42	1	45,662	44,359	1,303	2.937%
District 43	1	42,630	44,359	-1,729	-3.898%
District 44	1	42,506	44,359	-1,853	-4.177%
District 45	1	43,372	44,359	-987	-2.225%
District 46	1	43,596	44,359	-763	-1.720%
District 47	1	46,480	44,359	2,121	4.781%
District 48	1	44,642	44,359	283	0.638%
District 49	1	46,367	44,359	2,008	4.527%
District 50	1	43,190	44,359	-1,169	-2.635%
District 51	1	46,319	44,359	1,960	4.418%
District 52	1	43,163	44,359	-1,196	-2.696%
District 53	1	43,160	44,359	-1,199	-2.703%
District 54	1	42,849	44,359	-1,510	-3.404%
District 55	1	45,124	44,359	765	1.725%
District 56	1	46,361	44,359	2,002	4.513%
District 57	1	42,697	44,359	-1,662	-3.747%

Plan Statistics

Plan: HFAHB14 362 77 (Cox)

<u>Districts:</u>	<u># of Members</u>	<u>Actual Population</u>	<u>Ideal Population</u>	<u>Absolute Deviation</u>	<u>Relative Deviation</u>
District 58	1	45,194	44,359	835	1.882%
District 59	1	45,699	44,359	1,340	3.021%
District 60	1	44,864	44,359	505	1.138%
District 61	1	44,049	44,359	-310	-0.699%
District 62	1	42,969	44,359	-1,390	-3.134%
District 63	1	44,638	44,359	279	0.629%
District 64	1	45,619	44,359	1,260	2.840%
District 65	1	44,189	44,359	-170	-0.383%
District 66	1	43,703	44,359	-656	-1.479%
District 67	1	43,566	44,359	-793	-1.788%
District 68	1	44,607	44,359	248	0.559%
District 69	1	46,550	44,359	2,191	4.939%
District 70	1	45,398	44,359	1,039	2.342%
District 71	1	43,001	44,359	-1,358	-3.061%
District 72	1	42,817	44,359	-1,542	-3.476%
District 73	1	46,503	44,359	2,144	4.833%
District 74	1	44,185	44,359	-174	-0.392%
District 75	1	45,463	44,359	1,104	2.489%
District 76	1	43,228	44,359	-1,131	-2.550%
District 77	1	43,291	44,359	-1,068	-2.408%
District 78	1	44,584	44,359	225	0.507%
District 79	1	45,579	44,359	1,220	2.750%
District 80	1	46,249	44,359	1,890	4.261%
District 81	1	43,632	44,359	-727	-1.639%
District 82	1	46,202	44,359	1,843	4.155%
District 83	1	43,956	44,359	-403	-0.908%
District 84	1	42,520	44,359	-1,839	-4.146%
District 85	1	44,303	44,359	-56	-0.126%
District 86	1	45,736	44,359	1,377	3.104%
District 87	1	45,538	44,359	1,179	2.658%
District 88	1	42,542	44,359	-1,817	-4.096%
District 89	1	45,218	44,359	859	1.936%
District 90	1	43,451	44,359	-908	-2.047%
District 91	1	42,508	44,359	-1,851	-4.173%
District 92	1	45,176	44,359	817	1.842%
District 93	1	44,224	44,359	-135	-0.304%
District 94	1	45,685	44,359	1,326	2.989%
District 95	1	43,337	44,359	-1,022	-2.304%
District 96	1	45,706	44,359	1,347	3.037%
District 97	1	45,713	44,359	1,354	3.052%
District 98	1	43,431	44,359	-928	-2.092%
District 99	1	45,922	44,359	1,563	3.524%
District 100	1	44,360	44,359	1	0.002%
District 101	1	45,346	44,359	987	2.225%
District 102	1	45,264	44,359	905	2.040%
District 103	1	43,764	44,359	-595	-1.341%
District 104	1	45,197	44,359	838	1.889%
District 105	1	43,366	44,359	-993	-2.239%

Plan Statistics

Plan: HFAHB14 362 77 (Cox)

<u>Districts:</u>	<u># of Members</u>	<u>Actual Population</u>	<u>Ideal Population</u>	<u>Absolute Deviation</u>	<u>Relative Deviation</u>
Grand Total:	105	4,657,757	4,657,695		
Ideal Population Per Member:		44359			
Number of Districts for Plan Type:		105			
Range of District Populations:		42,204	to 46,550		
Absolute Mean Deviation:		41			
Absolute Range:		-2,155	to 2,191		
Absolute Overall Range:		4,346			
Relative Mean Deviation:		2.48%			
Relative Range:		-4.86%	to 4.94%		
Relative Overall Range:		9.80%			

<i>Ideal - Actual:</i>	-62
<i>Remainder:</i>	62
<i>Unassigned Population:</i>	0

District Summary



	Total Population	Total White	Total Black	Total Asian	Total Other	Total Hispanic	VAP Total	VAP White	VAP Black	VAP Hispanic Total	Reg Total Dec 2021	Reg White Dec 2021	Reg Black Dec 2021	Reg Other Dec 2021	Reg Dem Total Dec 2021	Reg Rep Total Dec 2021	Reg Other Total Dec 2021
District 1																	
Bossier	9,218	5,684	3,071	67	194	268	7,372	4,540	2,505	186	5,363	3,559	1,629	175	1,914	2,180	1,269
Caddo	35,347	25,650	7,105	365	1,155	1,181	27,500	20,497	5,169	718	22,699	17,503	4,316	880	6,304	10,357	6,038
District 1	44,565	31,334	10,176	432	1,349	1,449	34,872	25,037	7,674	904	28,062	21,062	5,945	1,055	8,218	12,537	7,307
	100.000%	70.311%	22.834%	0.969%	3.027%	3.251%	100.000%	71.797%	22.006%	2.592%	80.471%	75.055%	21.185%	3.760%	29.285%	44.676%	26.039%
District 2																	
Bossier	11,650	3,609	6,246	238	1,347	1,646	8,564	3,091	4,174	1,105	4,697	1,930	2,405	362	2,198	943	1,556
Caddo	32,352	6,865	23,746	399	980	1,298	25,354	6,005	18,016	923	20,491	4,345	15,200	946	13,299	1,986	5,206
District 2	44,002	10,474	29,992	637	2,327	2,944	33,918	9,096	22,190	2,028	25,188	6,275	17,605	1,308	15,497	2,929	6,762
	100.000%	23.803%	68.161%	1.448%	5.288%	6.691%	100.000%	26.818%	65.422%	5.979%	74.261%	24.913%	69.894%	5.193%	61.525%	11.629%	26.846%
District 3																	
Caddo	44,719	15,607	26,412	1,129	1,126	1,336	33,339	12,620	18,825	878	28,718	11,261	16,039	1,418	14,476	7,373	6,869
District 3	44,719	15,607	26,412	1,129	1,126	1,336	33,339	12,620	18,825	878	28,718	11,261	16,039	1,418	14,476	7,373	6,869
	100.000%	34.900%	59.062%	2.525%	2.518%	2.988%	100.000%	37.854%	56.465%	2.634%	86.139%	39.212%	55.850%	4.938%	50.407%	25.674%	23.919%
District 4																	
Caddo	44,702	15,619	26,601	305	1,493	1,652	34,031	12,961	19,319	1,076	28,024	10,691	16,249	1,084	15,267	6,448	6,309
District 4	44,702	15,619	26,601	305	1,493	1,652	34,031	12,961	19,319	1,076	28,024	10,691	16,249	1,084	15,267	6,448	6,309
	100.000%	34.940%	59.507%	0.682%	3.340%	3.696%	100.000%	38.086%	56.769%	3.162%	82.348%	38.149%	57.982%	3.868%	54.478%	23.009%	22.513%
District 5																	
Caddo	43,899	12,579	29,286	461	1,104	1,268	32,870	10,744	20,604	838	26,368	9,033	16,242	1,093	15,103	5,145	6,120
District 5	43,899	12,579	29,286	461	1,104	1,268	32,870	10,744	20,604	838	26,368	9,033	16,242	1,093	15,103	5,145	6,120
	100.000%	28.654%	66.712%	1.050%	2.515%	2.888%	100.000%	32.686%	62.683%	2.549%	80.219%	34.257%	61.597%	4.145%	57.278%	19.512%	23.210%
District 6																	
Bossier	11,578	7,163	3,044	409	644	879	8,816	5,738	2,070	592	5,524	4,001	1,097	426	1,501	2,224	1,799
Caddo	33,788	24,611	5,969	1,198	1,264	1,557	27,122	20,398	4,287	1,125	22,850	18,422	3,074	1,354	6,451	10,005	6,394
District 6	45,366	31,774	9,013	1,607	1,908	2,436	35,938	26,136	6,357	1,717	28,374	22,423	4,171	1,780	7,952	12,229	8,193
	100.000%	70.039%	19.867%	3.542%	4.206%	5.370%	100.000%	72.725%	17.689%	4.778%	78.953%	79.027%	14.700%	6.273%	28.026%	43.099%	28.875%
District 7																	
Caddo	3,041	2,526	185	177	91	89	2,191	1,834	139	60	2,146	1,858	129	159	314	1,366	466
De Soto	14,702	11,443	2,259	52	465	471	11,129	8,760	1,681	296	10,494	8,549	1,618	327	2,648	5,188	2,658
Sabine	22,155	15,036	3,861	94	441	710	17,064	12,054	2,655	502	14,547	11,023	2,184	1,340	4,712	6,406	3,429
Vernon	5,149	4,639	107	73	144	145	3,987	3,635	57	83	3,501	3,333	18	150	657	1,904	940
District 7	45,047	33,644	6,412	396	1,141	1,415	34,371	26,283	4,532	941	30,688	24,763	3,949	1,976	8,331	14,864	7,493
	100.000%	74.686%	14.234%	0.879%	2.533%	3.141%	100.000%	76.469%	13.186%	2.738%	89.285%	80.693%	12.868%	6.439%	27.147%	48.436%	24.417%
District 8																	
Bossier	43,277	29,466	9,038	1,585	2,267	2,803	31,560	22,312	5,997	1,812	24,492	19,068	4,003	1,421	5,213	13,231	6,048

District Summary



DB: LA 2020 12 - CENSUS

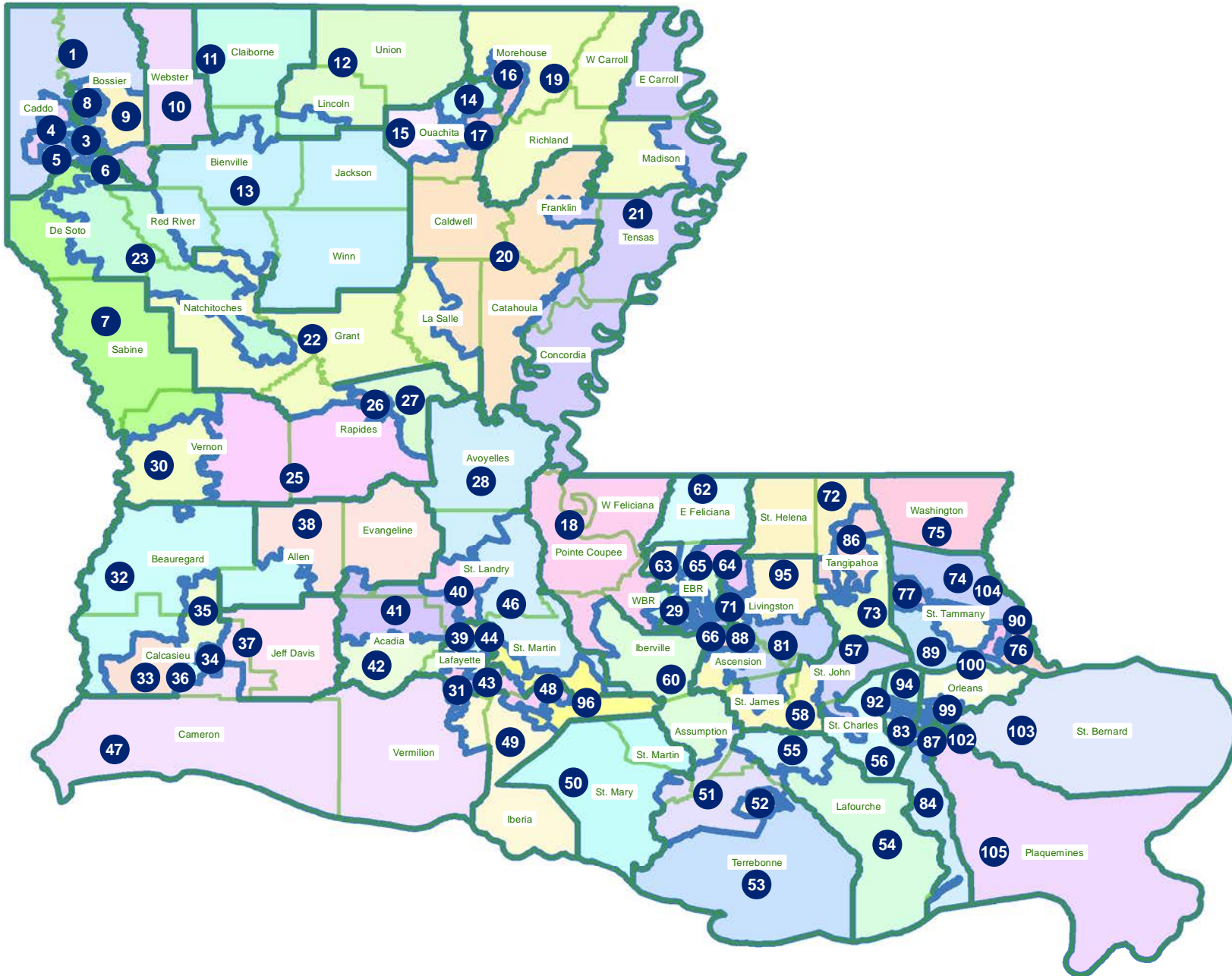
Plan Type: House

Plan: HFAHB14 362 77 (Cox)

	Total Population	Total White	Total Black	Total Asian	Total Other	Total Hispanic	VAP Total	VAP White	VAP Black	VAP Hispanic Total	Reg Total Dec 2021	Reg White Dec 2021	Reg Black Dec 2021	Reg Other Dec 2021	Reg Dem Total Dec 2021	Reg Rep Total Dec 2021	Reg Other Total Dec 2021
District 25																	
Rapides	37,027	27,015	6,042	1,153	1,893	2,172	28,415	21,361	4,298	1,395	23,877	19,166	3,438	1,273	6,860	11,002	6,015
Vernon	6,466	5,644	263	90	212	253	5,036	4,445	182	186	4,083	3,885	31	167	1,069	1,998	1,016
District 25	43,493	32,659	6,305	1,243	2,105	2,425	33,451	25,806	4,480	1,581	27,960	23,051	3,469	1,440	7,929	13,000	7,031
	100.000%	75.090%	14.497%	2.858%	4.840%	5.576%	100.000%	77.146%	13.393%	4.726%	83.585%	82.443%	12.407%	5.150%	28.358%	46.495%	25.147%
District 26																	
Rapides	43,118	11,240	29,763	566	1,085	1,309	32,444	9,527	21,249	1,001	25,106	7,083	16,987	1,036	14,912	3,708	6,486
District 26	43,118	11,240	29,763	566	1,085	1,309	32,444	9,527	21,249	1,001	25,106	7,083	16,987	1,036	14,912	3,708	6,486
	100.000%	26.068%	69.027%	1.313%	2.516%	3.036%	100.000%	29.364%	65.494%	3.085%	77.383%	28.212%	67.661%	4.127%	59.396%	14.769%	25.834%
District 30																	
Beauregard	8,573	4,829	3,016	199	338	461	6,639	3,849	2,273	316	4,801	2,601	1,814	386	1,875	1,514	1,412
Vernon	37,135	24,804	7,241	1,279	2,654	3,777	27,238	18,685	4,894	2,471	16,476	11,964	2,962	1,550	4,577	6,577	5,322
District 30	45,708	29,633	10,257	1,478	2,992	4,238	33,877	22,534	7,167	2,787	21,277	14,565	4,776	1,936	6,452	8,091	6,734
	100.000%	64.831%	22.440%	3.234%	6.546%	9.272%	100.000%	66.517%	21.156%	8.227%	62.807%	68.454%	22.447%	9.099%	30.324%	38.027%	31.649%
District 32																	
Allen	9,347	6,819	1,590	113	485	745	7,157	5,286	1,126	707	5,429	4,159	1,059	211	1,988	2,120	1,321
Beauregard	23,259	20,325	1,509	190	477	693	17,453	15,276	1,144	433	14,496	13,298	511	687	2,965	7,182	4,349
Calcasieu	13,148	11,297	1,219	65	227	294	9,960	8,631	889	201	7,909	7,045	651	213	2,283	3,405	2,221
District 32	45,754	38,441	4,318	368	1,189	1,732	34,570	29,193	3,159	1,341	27,834	24,502	2,221	1,111	7,236	12,707	7,891
	100.000%	84.017%	9.437%	0.804%	2.599%	3.785%	100.000%	84.446%	9.138%	3.879%	80.515%	88.029%	7.979%	3.992%	25.997%	45.653%	28.350%
District 38																	
Allen	13,403	9,508	2,900	133	255	1,148	10,353	7,465	2,149	1,048	6,772	5,319	1,158	295	2,793	2,497	1,482
Evangeline	29,699	19,577	8,802	183	883	956	22,302	15,098	6,148	752	19,216	13,487	5,423	306	8,838	6,565	3,813
District 38	43,102	29,085	11,702	316	1,138	2,104	32,655	22,563	8,297	1,800	25,988	18,806	6,581	601	11,631	9,062	5,295
	100.000%	67.479%	27.150%	0.733%	2.640%	4.881%	100.000%	69.095%	25.408%	5.512%	79.584%	72.364%	25.323%	2.313%	44.755%	34.870%	20.375%
District 41																	
Acadia	20,104	16,399	2,794	68	628	685	14,680	12,209	1,850	419	13,190	11,316	1,590	284	4,070	5,933	3,187
Evangeline	2,651	1,777	433	58	357	380	2,106	1,362	335	359	1,337	1,079	220	38	501	482	354
St. Landry	21,068	13,425	6,455	156	822	960	15,580	10,360	4,437	566	12,443	8,443	3,646	354	5,151	4,097	3,195
District 41	43,823	31,601	9,682	282	1,807	2,025	32,366	23,931	6,622	1,344	26,970	20,838	5,456	676	9,722	10,512	6,736
	100.000%	72.111%	22.093%	0.643%	4.123%	4.621%	100.000%	73.939%	20.460%	4.153%	83.328%	77.264%	20.230%	2.506%	36.047%	38.977%	24.976%

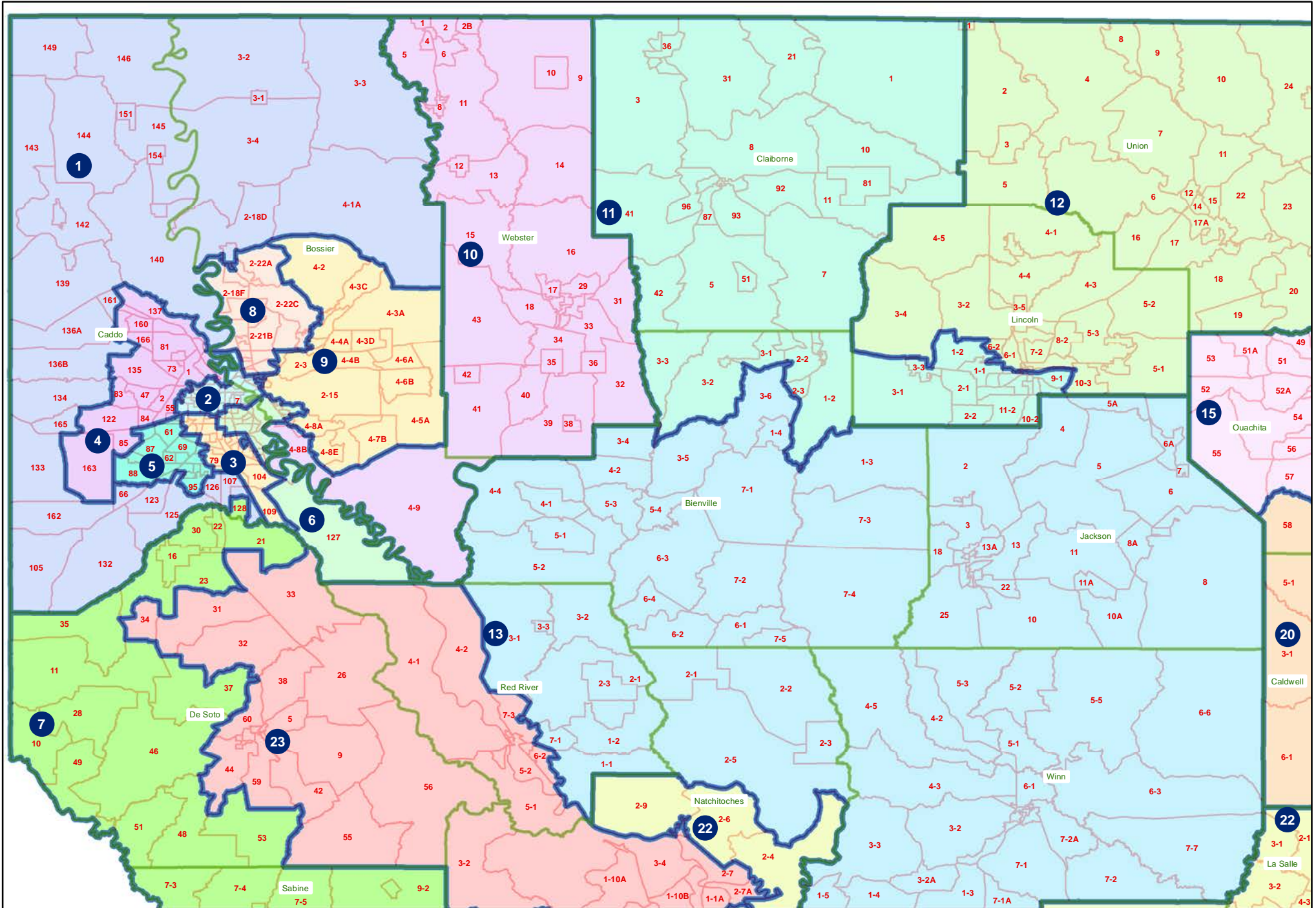
HFAHB14 362 77 (Cox)

Statewide



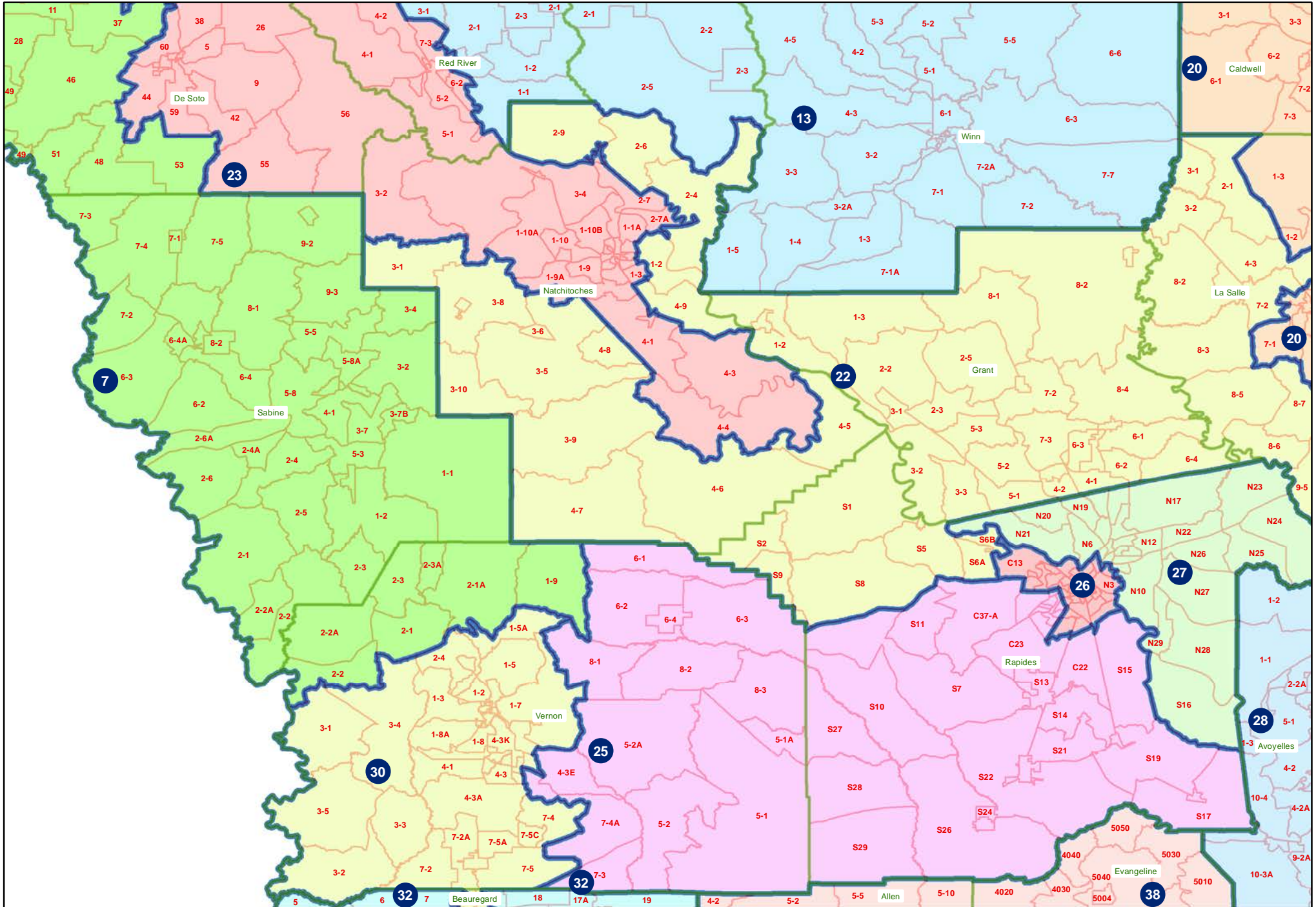
HFAHB14 362 77 (Cox)

Northwest

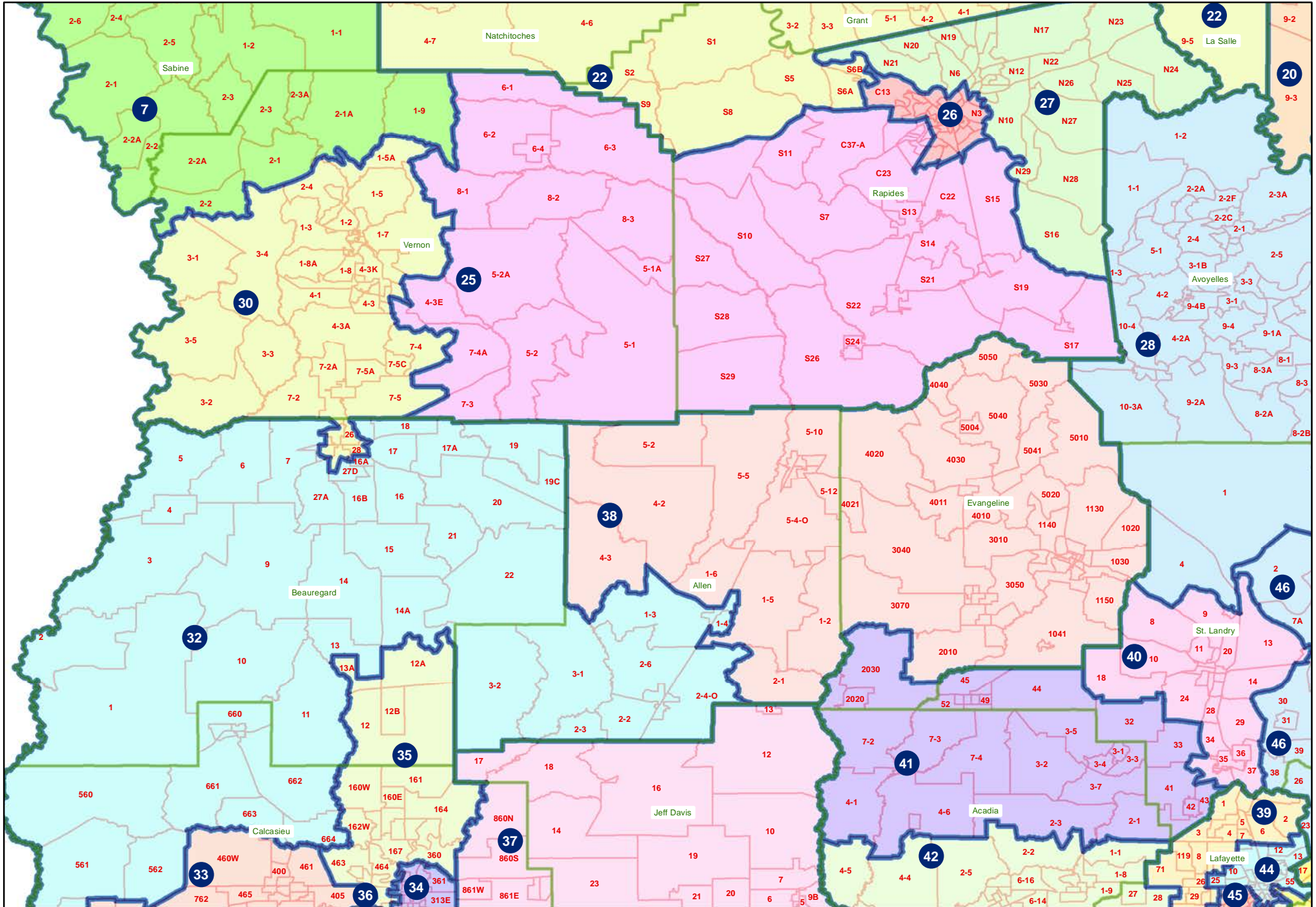


HFAHB14 362 77 (Cox)

Central



HFAHB14 362 77 (Cox)
Southwest



HFAHB14 362 77 (Cox)
Shreveport and Bossier

