

---

**HOUSE COMMITTEE AMENDMENTS**

2022 First Extraordinary Session

 Amendments proposed by House Committee on House and Governmental Affairs to  
 Original House Bill No. 12 by Representative Bryant
 

---

 1 AMENDMENT NO. 1

 2 On page 1, delete lines 12 through 20 and delete pages 2 through 5 and on page 6, delete  
 3 lines 1 through 6 and insert the following:

 4 "(1) District 1 is composed of Precincts 1, 2, 3, 4, 5, 7, 8, 9, 10, 11, 12, 13,  
 5 14, 15, 16, 17, 18, 19, 20, 21, 22, 23, 24, 25, 26, 27, 28, 29, 30, 31, 32, 33, 34, 35, 36,  
 6 37, 38, 39, 40, 41, 42, 43, 44, 45, 46, 51, 52, 53, 54, 55, 56, 57, 58, 59, 60, 61, 62, 63,  
 7 64, 65, 66, 67, 68, 69, 70, 71, 72, 73, 74, 75, 76, 77, 78, 79, 80, 81, 82, 83, 84, 85, 86,  
 8 87, 88, 89, 90, 91, 92, 93, 94, 95, 96, 97, 98, 99, 100, 101, 102, 103, 105, 106, 116,  
 9 117, 118, 119, 120, 121, 122, 123, 124, 125A, 125B, 126, 127, 128, 129, 130, 132,  
 10 134, 136, 192, 198, 199, 203, 246, 247, 248, 1-GI, 1-H, 2-H, 3-H, 4-H, 5-H, 6-H,  
 11 7-H, 8-H, 9-H, 1-K, 2-K, 3-K, 4-K, 5-K, 6-KA, 6-KB, 7-KA, 7-KB, 8-K, 9-K, 10-K,  
 12 11-K, 12-K, 13-KA, 14-K, 16-K, 17-K, 18-K, 19-K, 20-K, 25-K, 27-K, 28-K, 29-K,  
 13 34-K, 35-K, and 1-L of Jefferson Parish; Precincts 3-2, 3-3, 3-6, 4-1, 4-2, 4-3, 4-4,  
 14 4-5, 4-6, 7-3, 8-1, 9-1, 9-2, 10-1, 10-2, 10-3, 10-4, 10-5, 10-6, 10-7, 10-8, 10-9,  
 15 10-10, 10-11, 10-12, 10-13, 10-14, 10-15, 10-16, 11-1, and 11-2 of Lafourche Parish;  
 16 Precincts 3-20, 4-7, 4-8, 4-9, 4-11, 4-14, 4-15, 4-17, 4-17A, 4-18, 4-20, 4-21, 4-22,  
 17 4-23, 5-15, 5-16, 5-17, 5-18, 7-41, 7-42, 14-2, 14-3, 14-4, 14-7, 14-8, 14-9, 14-10,  
 18 14-11, 14-12, 14-13A, 14-14, 14-15, 14-16, 14-18A, 14-19, 14-21, 16-2, 16-3, 17-1,  
 19 17-17, 17-18, 17-18A, 17-19, and 17-20 of Orleans Parish; Plaquemines Parish; St.  
 20 Bernard Parish; St. Tammany Parish; Precincts 48, 49, 70, 70A, 71, 72, 72A, 73, 74,  
 21 120, 122, 122A, 122B, 124, 124A, 137A, 141A, 145, 147, 149, 149A, and 151 of  
 22 Tangipahoa Parish; and Precincts 11, 15, 19, 20, 21, 23, 25, 27, 29, 31, 32, 34, 35,  
 23 36, 38, 41, 43, 45, 46, 48, 49, 52, 53, 54, 55, 56, 57, 58, 59, 60, 61, 63, 69, 71, 72, 83,  
 24 85, 88, 89, 90, 110, and 111 of Terrebonne Parish.

 25 (2) District 2 is composed of Precincts 30, 36, 37, 39, 42, 44, 45, 47, 48, 50,  
 26 51, 52, 53, 54, 55, 57, and 65 of Ascension Parish; Precincts 1-1, 1-2, 2-2, 4-3, 5-5,  
 27 6-1, 6-2, 6-3, and 7-1 of Assumption Parish; Precincts 1-2, 1-3, 1-4, 1-5, 1-6, 1-10,  
 28 1-11, 1-13, 1-14, 1-15, 1-16, 1-17, 1-18, 1-19, 1-21, 1-22, 1-23, 1-24, 1-25, 1-26,  
 29 1-27, 1-28, 1-29, 1-30, 1-31, 1-32, 1-36, 1-50, 1-51, 1-58, 1-61, 1-62, 1-63, 1-67,  
 30 1-77, 1-84, 1-85, 1-86, 1-91, 1-92, 1-93, 1-94, 1-95, 1-100, 1-101, 1-104, 2-1, 2-9,  
 31 2-11, 2-13, 2-16, 2-20, 2-22, 2-23, 2-24, and 2-30 of East Baton Rouge Parish;  
 32 Precincts 1, 3, 6, 7, 9, 10, 11, 12, 13C, 14, 14A, 15, 16, 17, 18, 19, 20, 21, 22, and  
 33 23 of Iberville Parish; Precincts 104, 108, 115, 131, 133, 138, 150, 151, 152, 153,  
 34 154, 155, 156, 157A, 157B, 170, 171, 172, 173, 174, 175, 176, 177, 178, 179A,  
 35 179B, 180, 181, 182, 183, 184, 185A, 185B, 187, 188, 189, 190, 191, 193A, 193B,  
 36 194A, 194B, 195, 196, 197A, 197B, 200, 201, 202, 204, 205, 210, 211, 212, 213A,  
 37 213B, 213C, 214A, 214B, 215, 216A, 216B, 216C, 217, 225, 226, 227, 228, 229,  
 38 230, 231, 232A, 232B, 234, 235, 236, 237, 238A, 238B, 1-G, 2-G, 3-G, 4-G, 5-G,  
 39 6-G, 7-G, 8-G, 9-G, 10-G, 11-G, 12-G, 13-G, 13-KB, 15-K, 21-K, 22-K, 23-K, 24-K,  
 40 26-K, 30-K, 31-K, 33-K, 1-W, 2-W, 3-W, 4-W, 5-W, 6-W, and 7-W of Jefferson  
 41 Parish; Precincts 1-1, 1-2, 1-5, 1-6, 2-1, 2-2, 2-4, 2-6, 2-7, 3-1, 3-8, 3-9, 3-12, 3-14,  
 42 3-15, 3-18, 3-19, 4-2, 4-3, 4-5, 4-6, 5-1, 5-2, 5-3, 5-5, 5-7, 5-8, 5-9, 5-10, 5-11, 5-12,  
 43 5-13, 6-1, 6-2, 6-4, 6-6, 6-7, 6-8, 6-9, 7-1, 7-2, 7-4, 7-5, 7-6, 7-7, 7-8, 7-9A, 7-10,  
 44 7-11, 7-12, 7-13, 7-14, 7-15, 7-16, 7-17, 7-18, 7-19, 7-20, 7-21, 7-23, 7-24, 7-25,  
 45 7-25A, 7-26, 7-27, 7-27B, 7-28, 7-28A, 7-29, 7-30, 7-32, 7-33, 7-35, 7-37, 7-37A,  
 46 7-40, 8-1, 8-2, 8-4, 8-6, 8-7, 8-8, 8-9, 8-12, 8-13, 8-14, 8-15, 8-19, 8-20, 8-21, 8-22,  
 47 8-23, 8-24, 8-25, 8-26, 8-27, 8-28, 8-30, 9-1, 9-3, 9-4, 9-5, 9-6, 9-7, 9-8, 9-9, 9-10,  
 48 9-11, 9-12, 9-13, 9-14, 9-15, 9-16, 9-17, 9-19, 9-21, 9-23, 9-25, 9-26, 9-28, 9-28C,  
 49 9-29, 9-30, 9-30A, 9-31, 9-31A, 9-31B, 9-31D, 9-32, 9-33, 9-34A, 9-35, 9-35A,  
 50 9-36, 9-36B, 9-37, 9-38, 9-38A, 9-39, 9-39B, 9-40, 9-40A, 9-40C, 9-41, 9-41A,

1 9-41B, 9-41C, 9-41D, 9-42, 9-42C, 9-43A, 9-43B, 9-43C, 9-43E, 9-43F, 9-43G,  
 2 9-43H, 9-43I, 9-43J, 9-43K, 9-43L, 9-43M, 9-43N, 9-44, 9-44A, 9-44B, 9-44D,  
 3 9-44E, 9-44F, 9-44G, 9-44I, 9-44J, 9-44L, 9-44M, 9-44N, 9-44O, 9-44P, 9-44Q,  
 4 9-45, 9-45A, 10-3, 10-6, 10-7, 10-8, 10-9, 10-11, 10-12, 10-13, 10-14, 11-2, 11-3,  
 5 11-4, 11-5, 11-8, 11-9, 11-10, 11-11, 11-12, 11-13, 11-14, 11-17, 12-1, 12-2, 12-3,  
 6 12-4, 12-5, 12-6, 12-7, 12-8, 12-9, 12-10, 12-11, 12-12, 12-13, 12-14, 12-16, 12-17,  
 7 12-19, 13-1, 13-2, 13-3, 13-4, 13-5, 13-6, 13-7, 13-8, 13-9, 13-10, 13-11, 13-12,  
 8 13-13, 13-14, 13-15, 13-16, 14-1, 14-5, 14-6, 14-17, 14-20, 14-23, 14-24A, 14-25,  
 9 14-26, 15-1, 15-2, 15-3, 15-5, 15-6, 15-8, 15-9, 15-10, 15-11, 15-12, 15-12A, 15-13,  
 10 15-13A, 15-13B, 15-14, 15-14A, 15-14B, 15-14C, 15-14D, 15-14E, 15-14F, 15-14G,  
 11 15-15, 15-15A, 15-15B, 15-16, 15-17, 15-17A, 15-17B, 15-18, 15-18A, 15-18B,  
 12 15-18C, 15-18D, 15-18E, 15-18F, 15-19, 15-19A, 15-19B, 15-19C, 16-1, 16-1A,  
 13 16-4, 16-5, 16-6, 16-7, 16-8, 16-9, 17-2, 17-3, 17-4, 17-5, 17-6, 17-7, 17-8, 17-9,  
 14 17-10, 17-11, 17-12, 17-13, 17-13A, 17-14, 17-15, and 17-16 of Orleans Parish;  
 15 Precincts 1-1, 1-2, 1-3, 1-5, 2-1, 2-2, 2-3, 2-4, 2-5, 4-1, 4-2, 4-3, 4-4, 5-1, 5-3, 5-4,  
 16 6-6, 6-7, 6-8, 7-1, 7-2, 7-3, and 7-4 of St. Charles Parish; St. James Parish; Precincts  
 17 1-1, 1-2, 1-3, 1-4, 1-5, 2-1, 2-2, 2-3, 2-4, 3-1, 3-2, 3-4, 4-1, 4-2, 4-3, 4-14, 5-1, 5-8,  
 18 6-1, 6-3, 6-4, and 7-7 of St. John the Baptist Parish; and Precincts 1A, 1B, 1C, 2B,  
 19 6, 7B, 8, 10A, 10B, 11A, 11B, 13A, 13B, 14, and 15 of West Baton Rouge Parish.

20 (3) District 3 is composed of Acadia Parish; Calcasieu Parish; Cameron  
 21 Parish; Iberia Parish; Jefferson Davis Parish; Lafayette Parish; Precincts 3, 4, 5, 6,  
 22 7, 8, 9, 10, 11, 12, 13, 14, 15, 16, 17, 18, 19, 20, 21, 22, 23, 24, 25, 26, 27, 28, and  
 23 29 of St. Martin Parish; Precincts 1, 2, 3, 4, 5, 6, 7, 8, 9, 10, 11, 12, 13, 14, 15, 16,  
 24 17, 18, 19, 20, 21, 22, 23, 25, 26, 27, 28, 29, 30, 31, 32, 33, 34, 35, 36, 37, 38, 39, 40,  
 25 42, 43, and 44 of St. Mary Parish; and Vermilion Parish.

26 (4) District 4 is composed of Bienville Parish; Bossier Parish; Caddo Parish;  
 27 Claiborne Parish; De Soto Parish; East Carroll Parish; Lincoln Parish; Madison  
 28 Parish; Morehouse Parish; Natchitoches Parish; Precincts 1, 1A, 2, 3, 4, 5, 6, 7, 8, 9,  
 29 9A, 10, 11, 12, 13, 14, 15, 16, 17, 18, 19, 20, 21, 22, 23, 24, 26, 27, 27A, 28, 29, 30,  
 30 31, 34, 47, 59, 60, 62, 63, 65, 65A, 66, 67, 68, 69, 70, 72, 73, 74, 76, 78, and 79 of  
 31 Ouachita Parish; Precincts C1, C2, C3, C4, C5, C6, C7, C8, C9, C10, C11-A, C11-B,  
 32 C13, C14, C15, C17, C18, C19, C20, C21, C24, C25, C26, C27, C28, C30, C31,  
 33 C32, C33, C35, C36, C37-B, C38-A, C38-B, C39, C40, C41, N1, N2, N3, N4, S1,  
 34 S4, S5, and S6A of Rapides Parish; Red River Parish; Tensas Parish; Union Parish;  
 35 Webster Parish; and West Carroll Parish.

36 (5) District 5 is composed of Allen Parish; Avoyelles Parish; Beauregard  
 37 Parish; Caldwell Parish; Catahoula Parish; Concordia Parish; East Feliciana Parish;  
 38 Evangeline Parish; Franklin Parish; Grant Parish; Jackson Parish; La Salle Parish;  
 39 Precincts 25, 32, 33, 35, 36, 37, 38, 39, 40, 41, 42, 43, 44, 44A, 45, 46, 48, 49, 50,  
 40 51, 51A, 52, 52A, 53, 54, 55, 56, 56A, 57, 58, 61, 64, 71, 75, and 77 of Ouachita  
 41 Parish; Pointe Coupee Parish; Precincts C22, C23, C34, C37-A, C42, N5, N6, N7,  
 42 N8, N9, N10, N11, N12, N13-A, N13-B, N14-A, N14-B, N15, N16, N17, N18-A,  
 43 N18-B, N19, N20, N21, N22, N23, N24, N25, N26, N27, N28, N29, S2, S6B, S7, S8,  
 44 S9, S10, S11, S13, S14, S15, S16, S17, S18, S19, S20, S21, S22, S23, S24, S25, S26,  
 45 S27, S28, and S29 of Rapides Parish; Richland Parish; Sabine Parish; St. Helena  
 46 Parish; St. Landry Parish; Precincts 1, 2, 6, 11, 15, 16, 17, 18, 26, 27, 28, 33, 40,  
 47 40A, 41, 42, 42A, 43, 44, 45, 45A, 46, 47, 101, 102, 104, 104A, 105, 106, 106A,  
 48 107, 108, 109, 110, 111A, 112, 114, 115B, 116, 117, 118, 119, 120A, 120B, 121,  
 49 121A, 123, 125, 127, 127A, 129, 129A, 133, 133A, 137, 137B, 137C, 137D, 139,  
 50 141, 143, and 143A of Tangipahoa Parish; Vernon Parish; Washington Parish; West  
 51 Feliciana Parish; and Winn Parish.

52 (6) District 6 is composed of Precincts 1, 2, 3, 4, 5, 6, 7, 8, 9, 10, 11, 12, 13,  
 53 14, 15, 16, 17, 18, 20, 21, 22, 23, 24, 25, 26, 27, 28, 31, 32, 33, 34, 35, 40, 41, 43, 58,  
 54 61, 62, 63, 64, 66, 71, 72, 73, 76, 77, and 78 of Ascension Parish; Precincts 2-1, 2-3,  
 55 2-4, 2-5, 3-1, 3-2, 4-1, 4-2, 5-1, 5-2, 5-3, 7-2, 7-3, 8-1, and 9-1 of Assumption Parish;  
 56 Precincts 1-1, 1-7, 1-8, 1-9, 1-12, 1-20, 1-33, 1-34, 1-35, 1-37, 1-38, 1-39, 1-40,  
 57 1-41, 1-42, 1-43, 1-44, 1-45, 1-46, 1-47, 1-48, 1-49, 1-52, 1-53, 1-54, 1-55, 1-56,  
 58 1-57, 1-59, 1-60, 1-64, 1-65, 1-66, 1-68, 1-69, 1-70, 1-71, 1-72, 1-73, 1-74, 1-75,  
 59 1-76, 1-78, 1-79, 1-80, 1-81, 1-82, 1-83, 1-87, 1-88, 1-89, 1-90, 1-97, 1-98, 1-99,

1 1-102, 1-103, 1-105, 1-107, 2-2, 2-3, 2-4, 2-5, 2-6, 2-7, 2-8, 2-10, 2-12, 2-14, 2-15,  
 2 2-17, 2-18, 2-19, 2-21, 2-25, 2-26, 2-27, 2-28, 2-29, 2-31, 2-32, 2-33, 2-34, 2-35,  
 3 2-36, 2-37, 3-1, 3-2, 3-3, 3-4, 3-5, 3-6, 3-7, 3-8, 3-9, 3-10, 3-11, 3-12, 3-13, 3-14,  
 4 3-15, 3-16, 3-17, 3-18, 3-19, 3-20, 3-21, 3-22, 3-23, 3-24, 3-25, 3-26, 3-27, 3-28,  
 5 3-29, 3-30, 3-31, 3-32, 3-33, 3-34, 3-35, 3-36, 3-37, 3-38, 3-39, 3-40, 3-41, 3-43,  
 6 3-44, 3-45, 3-46, 3-47, 3-48, 3-49, 3-50, 3-51, 3-52, 3-53, 3-54, 3-55, 3-56, 3-57,  
 7 3-58, 3-59, 3-60, 3-61, 3-62, 3-63, 3-64, 3-65, 3-66, 3-67, 3-68, 3-69, 3-70, 3-71, and  
 8 3-72 of East Baton Rouge Parish; Precincts 4, 5, 13, 15B, 24, 25, 26, 27, 28, 29, 31,  
 9 and 32 of Iberville Parish; Precincts 1-1, 1-2, 1-3, 1-4, 1-5, 2-1, 2-1A, 2-2, 2-3, 2-3A,  
 10 2-4, 2-5, 2-6, 2-7, 2-8, 2-9, 2-10, 2-11, 2-12, 2-13, 2-14, 3-1, 3-4, 3-5, 5-1, 5-1A,  
 11 5-1B, 5-2, 6-1, 6-2, 6-3, 6-4, 6-5, 7-1, 7-2, 7-4, 11-3, 11-4, and 11-5 of Lafourche  
 12 Parish; Livingston Parish; Precincts 1-6, 2-6, 3-1, 3-2, 3-3, 5-5, 6-1, 6-2, and 6-4 of  
 13 St. Charles Parish; Precincts 4-13, 5-4, 5-7, 7-2, 7-3, and 7-5 of St. John the Baptist  
 14 Parish; Precincts 1 and 2 of St. Martin Parish; Precincts 24, 41, and 45 of St. Mary  
 15 Parish; Precincts 1, 4, 5, 7, 8, 9, 10, 12, 13, 14, 16, 17, 18, 51, 64, 65, 67, 68, 73, 74,  
 16 76, 82, 84, 86, and 87 of Terrebonne Parish; and Precincts 2A, 3, 4, 5, 7A, 9, 12, 16,  
 17 17, 18, 19, 20, 21, and 22 of West Baton Rouge Parish."

# Differing Assignments



DB: LA 2020 12 - CENSUS  
Plan Type: Congress

Plan: HCAHB12 #112

Page: 1 of 30

---

	HCAHB12 #112	221ES-40 (Bryant)
<b>Allen</b>		
1-1	5	3
1-2	5	3
1-3	5	3
1-4	5	3
1-5	5	3
1-6	5	3
2-1	5	3
2-2	5	3
2-2-A	5	3
2-3	5	3
2-4-C	5	3
2-4-O	5	3
2-5	5	3
2-6	5	3
3-1	5	3
3-2	5	3
4-2	5	3
4-3	5	3
5-2	5	3
5-3	5	3
5-4-C	5	3
5-4-O	5	3
5-5	5	3
5-7	5	3
5-8A	5	3
5-9	5	3
5-10	5	3
5-12	5	3
5-13	5	3
<b>Ascension</b>		
6	6	2
28	6	2
40	6	2
62	6	2
63	6	2
66	6	2
<b>Assumption</b>		
2-1	6	2
2-3	6	2
2-4	6	2
2-5	6	2
3-1	6	2
3-2	6	2
4-1	6	2
4-2	6	2

# Differing Assignments



DB: LA 2020 12 - CENSUS  
Plan Type: Congress

Plan: HCAHB12 #112

---

	HCAHB12 #112	221ES-40 (Bryant)
5-1	6	2
5-2	6	2
5-3	6	2
7-2	6	2
7-3	6	2
8-1	6	2
9-1	6	2
<b>Beauregard</b>		
1	5	3
2	5	3
3	5	3
4	5	3
5	5	3
6	5	3
7	5	3
9	5	3
10	5	3
11	5	3
12	5	3
12A	5	3
12B	5	3
13	5	3
13A	5	3
14	5	3
14A	5	3
15	5	3
16	5	3
16A	5	3
16B	5	3
17	5	3
17A	5	3
18	5	3
18A	5	3
19	5	3
19C	5	3
20	5	3
21	5	3
22	5	3
25	5	3
25A	5	3
25B	5	3
26	5	3
27	5	3
27A	5	3
27B	5	3

# Differing Assignments



DB: LA 2020 12 - CENSUS  
Plan Type: Congress

Plan: HCAHB12 #112

---

	HCAHB12 #112	221ES-40 (Bryant)
27D	5	3
28	5	3
30	5	3
<b>Caddo</b>		
1	4	5
2	4	5
3	4	5
4	4	5
5A	4	5
5B	4	5
6	4	5
7	4	5
23	4	5
25	4	5
28	4	5
29	4	5
30	4	5
31	4	5
32	4	5
34	4	5
35	4	5
36	4	5
37	4	5
38	4	5
39	4	5
40	4	5
41	4	5
43	4	5
44	4	5
45	4	5
46	4	5
47	4	5
50	4	5
51	4	5
52	4	5
53	4	5
54	4	5
55	4	5
57	4	5
58	4	5
59	4	5
60	4	5
61	4	5
62	4	5
63	4	5

# Differing Assignments



DB: LA 2020 12 - CENSUS  
Plan Type: Congress

Plan: HCAHB12 #112

---

	HCAHB12 #112	221ES-40 (Bryant)
64	4	5
65	4	5
66	4	5
67	4	5
69	4	5
70	4	5
71	4	5
73	4	5
74	4	5
78	4	5
79	4	5
80	4	5
81	4	5
83	4	5
84	4	5
85	4	5
86	4	5
87	4	5
88	4	5
89	4	5
90	4	5
91	4	5
94	4	5
99	4	5
100	4	5
105	4	5
111	4	5
114	4	5
122	4	5
123	4	5
125	4	5
132	4	5
162	4	5
<b>Caldwell</b>		
1-1	5	4
1-2	5	4
2-1	5	4
2-2	5	4
3-1	5	4
3-2	5	4
3-3	5	4
4-1	5	4
4-1A	5	4
4-2	5	4
5-1	5	4

# Differing Assignments



DB: LA 2020 12 - CENSUS  
Plan Type: Congress

Plan: HCAHB12 #112

---

	HCAHB12 #112	221ES-40 (Bryant)
5-2	5	4
5-3	5	4
6-1	5	4
6-2	5	4
6-3	5	4
7-1	5	4
7-2	5	4
7-3	5	4
<b>Catahoula</b>		
1-1	5	4
1-2	5	4
1-3	5	4
1-4	5	4
2-1	5	4
2-2	5	4
3-1	5	4
3-2	5	4
3-3	5	4
3-4	5	4
4-1	5	4
4-2	5	4
5-1	5	4
6-1	5	4
6-2	5	4
6-3	5	4
6-5	5	4
7-1	5	4
7-3	5	4
7-5	5	4
8-1	5	4
9-1	5	4
9-2	5	4
9-3	5	4
9-4	5	4
<b>Concordia</b>		
1-1	5	4
1-2	5	4
1-3	5	4
1-4	5	4
2-1	5	4
3-1	5	4
3-2	5	4
3-3	5	4
3-4	5	4
4-1	5	4



# Differing Assignments



DB: LA 2020 12 - CENSUS  
Plan Type: Congress

Plan: HCAHB12 #112

---

	HCAHB12 #112	221ES-40 (Bryant)
4-2	5	4
4-3	5	4
4-4	5	4
5-1	5	4
5-2	5	4
5-2B	5	4
5-3	5	4
5-4	5	4
5-5	5	4
5-6	5	4
<b>De Soto</b>		
1	4	5
4	4	5
5	4	5
6	4	5
9	4	5
10	4	5
11	4	5
16	4	5
21	4	5
22	4	5
23	4	5
26	4	5
28	4	5
30	4	5
31	4	5
32	4	5
33	4	5
34	4	5
35	4	5
37	4	5
38	4	5
42	4	5
44	4	5
46	4	5
48	4	5
49	4	5
51	4	5
53	4	5
55	4	5
56	4	5
59	4	5
60	4	5
63	4	5
<b>East Baton Rouge</b>		

# Differing Assignments



DB: LA 2020 12 - CENSUS  
Plan Type: Congress

**Plan: HCAHB12 #112**

---

	HCAHB12 #112	221ES-40 (Bryant)
1-1	6	5
1-2	2	5
1-3	2	5
1-4	2	5
1-5	2	5
1-6	2	5
1-10	2	5
1-11	2	5
1-13	2	5
1-14	2	5
1-15	2	5
1-16	2	5
1-17	2	5
1-18	2	5
1-19	2	5
1-20	6	5
1-21	2	5
1-22	2	5
1-23	2	5
1-24	2	5
1-25	2	5
1-26	2	5
1-27	2	5
1-28	2	5
1-29	2	5
1-30	2	5
1-31	2	5
1-32	2	5
1-36	2	5
1-37	6	5
1-38	6	5
1-45	6	5
1-50	2	5
1-51	2	5
1-54	6	5
1-58	2	5
1-61	2	5
1-62	2	5
1-63	2	5
1-67	2	5
1-68	6	5
1-70	6	5
1-77	2	5
1-78	6	5
1-82	6	5

# Differing Assignments



DB: LA 2020 12 - CENSUS  
Plan Type: Congress

**Plan: HCAHB12 #112**

---

	HCAHB12 #112	221ES-40 (Bryant)
1-83	6	5
1-84	2	5
1-85	2	5
1-86	2	5
1-88	6	5
1-91	2	5
1-92	2	5
1-93	2	5
1-94	2	5
1-95	2	5
1-97	6	5
1-100	2	5
1-101	2	5
1-104	2	5
2-1	2	5
2-2	6	5
2-3	6	5
2-4	6	5
2-5	6	5
2-6	6	5
2-7	6	5
2-8	6	5
2-9	2	5
2-10	6	5
2-11	2	5
2-12	6	5
2-13	2	5
2-14	6	5
2-15	6	5
2-16	2	5
2-17	6	5
2-18	6	5
2-19	6	5
2-20	2	5
2-21	6	5
2-22	2	5
2-23	2	5
2-24	2	5
2-25	6	5
2-26	6	5
2-27	6	5
2-28	6	5
2-29	6	5
2-30	2	5
2-31	6	5

# Differing Assignments



DB: LA 2020 12 - CENSUS  
Plan Type: Congress

Plan: HCAHB12 #112

---

	HCAHB12 #112	221ES-40 (Bryant)
2-32	6	5
2-33	6	5
2-34	6	5
2-35	6	5
2-36	6	5
2-37	6	5
3-1	6	5
3-2	6	5
3-6	6	5
3-8	6	5
3-14	6	5
3-24	6	5
3-30	6	5
3-37	6	5
3-54	6	5
3-58	6	5
<b>Evangeline</b>		
1010	5	3
1020	5	3
1030	5	3
1031	5	3
1040	5	3
1041	5	3
1050	5	3
1060	5	3
1080	5	3
1081	5	3
1090	5	3
1091	5	3
1100	5	3
1101	5	3
1110	5	3
1120	5	3
1130	5	3
1140	5	3
1150	5	3
1160	5	3
1161	5	3
1162	5	3
1170	5	3
1171	5	3
2010	5	3
2010A	5	3
2020	5	3
2030	5	3

# Differing Assignments



DB: LA 2020 12 - CENSUS  
Plan Type: Congress

Plan: HCAHB12 #112

---

	HCAHB12 #112	221ES-40 (Bryant)
2040	5	3
3010	5	3
3020	5	3
3030	5	3
3031	5	3
3032	5	3
3040	5	3
3050	5	3
3051	5	3
3052	5	3
3060	5	3
3070	5	3
3071	5	3
4001	5	3
4010	5	3
4011	5	3
4012	5	3
4020	5	3
4021	5	3
4030	5	3
4040	5	3
5004	5	3
5010	5	3
5020	5	3
5030	5	3
5040	5	3
5041	5	3
5050	5	3
<b>Franklin</b>		
1	5	4
2	5	4
3	5	4
4	5	4
4A	5	4
4B	5	4
6	5	4
12	5	4
13	5	4
13A	5	4
14	5	4
16	5	4
18	5	4
19	5	4
20	5	4
21	5	4

# Differing Assignments



DB: LA 2020 12 - CENSUS  
Plan Type: Congress

Plan: HCAHB12 #112

---

	HCAHB12 #112	221ES-40 (Bryant)
22	5	4
24	5	4
26	5	4
27	5	4
30	5	4
31	5	4
32	5	4
33	5	4
<b>Grant</b>		
1-1	5	4
1-2	5	4
1-3	5	4
2-1	5	4
2-2	5	4
2-3	5	4
2-5	5	4
3-1	5	4
3-2	5	4
3-3	5	4
4-1	5	4
4-2	5	4
4-3	5	4
5-1	5	4
5-2	5	4
5-3	5	4
6-1	5	4
6-2	5	4
6-3	5	4
6-4	5	4
7-1	5	4
7-2	5	4
7-3	5	4
7-4	5	4
8-1	5	4
8-2	5	4
8-3	5	4
8-4	5	4
<b>Iberia</b>		
1-1	3	2
1-3	3	2
2-1	3	2
3-1	3	2
4-1	3	2
4-2	3	2
4-3	3	2

# Differing Assignments



DB: LA 2020 12 - CENSUS  
Plan Type: Congress

Plan: HCAHB12 #112

---

	HCAHB12 #112	221ES-40 (Bryant)
6-5	3	2
7-1	3	2
7-5	3	2
8-2	3	2
8-3	3	2
9-1	3	2
9-2	3	2
9-4	3	2
9-5	3	2
10-1	3	2
11-2	3	2
12-1	3	2
12-3	3	2
<b>iberville</b>		
1	2	5
3	2	5
4	6	5
5	6	5
6	2	5
7	2	5
9	2	5
10	2	5
11	2	5
12	2	5
13	6	5
13C	2	5
14	2	5
14A	2	5
15	2	5
15B	6	5
16	2	5
17	2	5
18	2	5
19	2	5
20	2	5
21	2	5
22	2	5
23	2	5
24	6	5
25	6	5
26	6	5
27	6	5
28	6	5
29	6	5
31	6	5

# Differing Assignments



DB: LA 2020 12 - CENSUS  
Plan Type: Congress

Plan: HCAHB12 #112

---

	HCAHB12 #112	221ES-40 (Bryant)
32	6	5
<b>Jackson</b>		
1	5	4
2	5	4
3	5	4
4	5	4
5	5	4
5A	5	4
6	5	4
6A	5	4
7	5	4
8	5	4
8A	5	4
9	5	4
10	5	4
10A	5	4
11	5	4
11A	5	4
13	5	4
13A	5	4
15	5	4
16	5	4
17	5	4
17A	5	4
18	5	4
19A	5	4
19AI	5	4
20	5	4
20A	5	4
22	5	4
25	5	4
25A	5	4
25B	5	4
<b>Jefferson</b>		
116	1	2
131	2	1
133	2	1
138	2	1
190	2	1
191	2	1
193A	2	1
193B	2	1
194A	2	1
194B	2	1
202	2	1



# Differing Assignments



DB: LA 2020 12 - CENSUS  
Plan Type: Congress

Plan: HCAHB12 #112

---

	HCAHB12 #112	221ES-40 (Bryant)
13-KB	2	1
15-K	2	1
29-K	1	2
<b>La Salle</b>		
1-1	5	4
1-2	5	4
1-3	5	4
2-1	5	4
3-1	5	4
3-2	5	4
4-2	5	4
4-3	5	4
5-1	5	4
6-1	5	4
6-2	5	4
7-1	5	4
7-2	5	4
8-2	5	4
8-3	5	4
8-5	5	4
8-6	5	4
8-7	5	4
9-1	5	4
9-2	5	4
9-3	5	4
9-4	5	4
9-5	5	4
10-1	5	4
<b>Lafayette</b>		
1	3	5
2	3	5
4	3	5
5	3	5
6	3	5
7	3	5
11	3	5
12	3	5
13	3	5
14	3	2
15	3	2
16	3	2
17	3	2
18	3	2
19	3	2
20	3	2

# Differing Assignments



DB: LA 2020 12 - CENSUS  
Plan Type: Congress

Plan: HCAHB12 #112

---

	HCAHB12 #112	221ES-40 (Bryant)
21	3	2
22	3	2
23	3	2
24	3	2
51	3	2
52	3	2
53	3	2
54	3	2
55	3	2
56	3	2
57	3	2
58	3	2
59	3	2
60	3	2
61	3	2
62	3	2
63	3	2
122	3	5
123	3	5
<b>Lafourche</b>		
1-1	6	1
1-2	6	1
1-3	6	1
1-4	6	1
1-5	6	1
2-1	6	1
2-1A	6	1
2-2	6	1
2-3	6	1
2-3A	6	1
2-4	6	1
2-5	6	1
2-6	6	1
2-7	6	1
2-8	6	1
2-9	6	1
2-10	6	1
2-11	6	1
2-12	6	1
2-13	6	1
2-14	6	1
3-1	6	1
3-4	6	1
3-5	6	1
5-1	6	1

# Differing Assignments



DB: LA 2020 12 - CENSUS  
Plan Type: Congress

Plan: HCAHB12 #112

---

	HCAHB12 #112	221ES-40 (Bryant)
5-1A	6	1
5-1B	6	1
5-2	6	1
6-1	6	1
6-2	6	1
6-3	6	1
6-4	6	1
6-5	6	1
7-1	6	1
7-2	6	1
7-4	6	1
11-3	6	1
11-4	6	1
11-5	6	1
<b>Natchitoches</b>		
1-1	4	5
1-3	4	5
1-3A	4	5
1-4	4	5
1-4A	4	5
1-5	4	5
1-5A	4	5
1-6	4	5
1-8	4	5
1-9	4	5
1-9A	4	5
1-10	4	5
1-10A	4	5
1-10B	4	5
1-11	4	5
1-13	4	5
1-14	4	5
2-7	4	5
3-1	4	5
3-2	4	5
3-3	4	5
3-4	4	5
3-5	4	5
3-6	4	5
3-7	4	5
3-8	4	5
3-9	4	5
3-10	4	5
4-1	4	5
4-2	4	5

# Differing Assignments



DB: LA 2020 12 - CENSUS  
Plan Type: Congress

Plan: HCAHB12 #112

---

	HCAHB12 #112	221ES-40 (Bryant)
4-3	4	5
4-4	4	5
4-5	4	5
4-6	4	5
4-7	4	5
4-8	4	5
4-9	4	5
<b>Orleans</b>		
3-20	1	2
4-7	1	2
7-41	1	2
7-42	1	2
9-45	2	1
9-45A	2	1
13-1	2	1
13-2	2	1
13-3	2	1
13-4	2	1
13-5	2	1
13-6	2	1
13-7	2	1
13-8	2	1
13-9	2	1
13-10	2	1
13-11	2	1
13-12	2	1
13-13	2	1
13-14	2	1
13-15	2	1
13-16	2	1
14-1	2	1
14-5	2	1
14-6	2	1
14-17	2	1
14-20	2	1
16-1	2	1
16-1A	2	1
16-4	2	1
16-5	2	1
16-6	2	1
16-7	2	1
16-8	2	1
17-2	2	1
<b>Ouachita</b>		
25	5	4

# Differing Assignments



DB: LA 2020 12 - CENSUS  
Plan Type: Congress

Plan: HCAHB12 #112

---

	HCAHB12 #112	221ES-40 (Bryant)
32	5	4
33	5	4
35	5	4
36	5	4
37	5	4
38	5	4
39	5	4
40	5	4
41	5	4
42	5	4
43	5	4
44	5	4
44A	5	4
45	5	4
46	5	4
48	5	4
49	5	4
50	5	4
51	5	4
51A	5	4
52	5	4
52A	5	4
53	5	4
54	5	4
55	5	4
56	5	4
56A	5	4
57	5	4
58	5	4
61	5	4
64	5	4
71	5	4
75	5	4
77	5	4
<b>Rapides</b>		
C1	4	5
C2	4	5
C3	4	5
C4	4	5
C5	4	5
C6	4	5
C7	4	5
C8	4	5
C9	4	5
C10	4	5

# Differing Assignments



DB: LA 2020 12 - CENSUS  
Plan Type: Congress

**Plan: HCAHB12 #112**

---

	HCAHB12 #112	221ES-40 (Bryant)
C11-A	4	5
C11-B	4	5
C13	4	5
C14	4	5
C15	4	5
C17	4	5
C18	4	5
C19	4	5
C20	4	5
C21	4	5
C24	4	5
C25	4	5
C26	4	5
C27	4	5
C28	4	5
C30	4	5
C31	4	5
C32	4	5
C33	4	5
C35	4	5
C36	4	5
C37-B	4	5
C38-A	4	5
C38-B	4	5
C39	4	5
C40	4	5
C41	4	5
N1	4	5
N2	4	5
N3	4	5
N4	4	5
N12	5	4
N15	5	4
N16	5	4
N17	5	4
N18-A	5	4
N18-B	5	4
N19	5	4
N22	5	4
N23	5	4
N24	5	4
N25	5	4
N26	5	4
N27	5	4
S1	4	5

# Differing Assignments



DB: LA 2020 12 - CENSUS  
Plan Type: Congress

Plan: HCAHB12 #112

---

	HCAHB12 #112	221ES-40 (Bryant)
S4	4	5
S5	4	5
S6A	4	5
<b>Richland</b>		
1	5	4
2	5	4
3	5	4
4	5	4
8	5	4
10	5	4
11	5	4
12	5	4
12A	5	4
13	5	4
17	5	4
18	5	4
23	5	4
25	5	4
26	5	4
27	5	4
28	5	4
30	5	4
31	5	4
32	5	4
33	5	4
34	5	4
35	5	4
<b>Sabine</b>		
1-1	5	3
1-2	5	3
1-3	5	3
2-1	5	3
2-2	5	3
2-2A	5	3
2-3	5	3
2-4	5	3
2-4A	5	3
2-5	5	3
2-6	5	3
2-6A	5	3
3-2	5	3
3-4	5	3
3-6	5	3
3-6A	5	3
3-7	5	3

# Differing Assignments



DB: LA 2020 12 - CENSUS  
Plan Type: Congress

Plan: HCAHB12 #112

---

	HCAHB12 #112	221ES-40 (Bryant)
3-7B	5	3
3-7X	5	3
4-1	5	3
5-3	5	3
5-5	5	3
5-8	5	3
5-8A	5	3
6-2	5	3
6-3	5	3
6-4	5	3
6-4A	5	3
6-4B	5	3
7-1	5	3
7-2	5	3
7-3	5	3
7-4	5	3
7-5	5	3
8-1	5	3
8-1A	5	3
8-2	5	3
9-1	5	3
9-2	5	3
9-3	5	3
<b>St. Charles</b>		
1-6	6	2
2-6	6	2
3-1	6	2
3-2	6	2
3-3	6	2
5-5	6	2
6-1	6	2
6-2	6	2
6-4	6	2
Lake Pontchartrain	6	2
<b>St. John the Baptist</b>		
4-13	6	2
5-4	6	2
5-7	6	2
7-2	6	2
7-3	6	2
7-5	6	2
Lake Pontchartrain	6	2
<b>St. Martin</b>		
1	6	2
2	6	2
3	3	2



# Differing Assignments



DB: LA 2020 12 - CENSUS  
Plan Type: Congress

Plan: HCAHB12 #112

---

	HCAHB12 #112	221ES-40 (Bryant)
4	3	2
5	3	2
6	3	2
7	3	2
8	3	2
9	3	2
10	3	2
11	3	2
12	3	2
13	3	2
14	3	2
15	3	2
16	3	2
17	3	2
18	3	2
19	3	2
20	3	2
21	3	2
22	3	2
23	3	2
24	3	2
25	3	2
26	3	2
27	3	2
28	3	2
29	3	2
<b>St. Mary</b>		
22	3	1
24	6	3
26	3	1
27	3	1
28	3	1
29	3	1
30	3	1
31	3	1
32	3	1
33	3	1
34	3	1
35	3	1
36	3	1
37	3	1
38	3	1
39	3	1
40	3	1
41	6	1

# Differing Assignments



DB: LA 2020 12 - CENSUS  
Plan Type: Congress

Plan: HCAHB12 #112

---

	HCAHB12 #112	221ES-40 (Bryant)
42	3	1
43	3	1
44	3	1
45	6	1
<b>St. Tammany</b>		
101	1	6
102	1	6
103	1	6
104	1	6
105	1	6
106	1	6
107	1	6
108	1	6
110	1	6
111	1	6
112	1	6
113	1	6
114	1	6
115	1	6
116	1	6
118	1	6
201	1	6
202	1	6
203	1	6
204	1	6
205	1	6
206	1	6
207	1	6
301	1	6
302	1	6
303	1	6
304	1	6
305	1	6
306	1	6
307	1	6
308	1	6
309	1	6
310	1	6
312	1	6
313	1	6
314	1	6
401	1	6
402	1	6
404	1	6
405	1	6

# Differing Assignments



DB: LA 2020 12 - CENSUS  
Plan Type: Congress

Plan: HCAHB12 #112

---

	HCAHB12 #112	221ES-40 (Bryant)
407	1	6
413	1	6
414	1	6
416	1	6
417	1	6
418	1	6
419	1	6
421	1	6
429	1	6
501	1	6
502	1	6
503	1	6
504	1	6
505	1	6
A01	1	6
A02	1	6
A03	1	6
A04	1	6
C01	1	6
C02	1	6
C03	1	6
C04	1	6
C05	1	6
C06	1	6
C07	1	6
C08	1	6
C09	1	6
C10	1	6
C11	1	6
F01	1	6
M01	1	6
M02	1	6
M03	1	6
M06	1	6
M07	1	6
M08	1	6
M11	1	6
M12	1	6
MD1	1	6
<b>Tangipahoa</b>		
16	5	6
27	5	6
28	5	6
33	5	6
40	5	6

# Differing Assignments



DB: LA 2020 12 - CENSUS  
Plan Type: Congress

**Plan: HCAHB12 #112**

---

	HCAHB12 #112	221ES-40 (Bryant)
40A	5	6
41	5	6
42	5	6
42A	5	6
43	5	6
44	5	6
45	5	6
45A	5	6
46	5	6
47	5	6
48	1	6
49	1	6
70	1	6
70A	1	6
71	1	6
72	1	6
72A	1	6
73	1	6
74	1	6
106A	5	6
110	5	6
112	5	6
114	5	6
116	5	6
117	5	6
118	5	6
119	5	6
120	1	6
120A	5	6
120B	5	6
121	5	6
121A	5	6
122	1	6
122A	1	6
122B	1	6
123	5	6
124	1	6
124A	1	6
125	5	6
127	5	6
127A	5	6
129	5	6
129A	5	6
133	5	6
133A	5	6

# Differing Assignments



DB: LA 2020 12 - CENSUS  
Plan Type: Congress

Plan: HCAHB12 #112

Page: 26 of 30

---

	HCAHB12 #112	221ES-40 (Bryant)
137	5	6
137A	1	6
137B	5	6
137C	5	6
137D	5	6
139	5	6
141	5	6
141A	1	6
143	5	6
143A	5	6
145	1	6
147	1	6
149	1	6
149A	1	6
151	1	6
Lake Pontchartrain	1	6
<b>Terrebonne</b>		
1	6	1
4	6	1
5	6	1
7	6	1
8	6	1
9	6	1
10	6	1
12	6	1
13	6	1
14	6	1
16	6	1
17	6	1
18	6	1
51	6	1
64	6	1
65	6	1
67	6	1
68	6	1
73	6	1
74	6	1
76	6	1
82	6	1
84	6	1
86	6	1
87	6	1
<b>Vernon</b>		
1-1	5	3
1-1B	5	3

# Differing Assignments



DB: LA 2020 12 - CENSUS  
Plan Type: Congress

**Plan: HCAHB12 #112**

---

	HCAHB12 #112	221ES-40 (Bryant)
1-2	5	3
1-2A	5	3
1-3	5	3
1-3B	5	3
1-3C	5	3
1-3D	5	3
1-4	5	3
1-4A	5	3
1-4B	5	3
1-4C	5	3
1-4D	5	3
1-5	5	3
1-5A	5	3
1-6	5	3
1-6A	5	3
1-6B	5	3
1-7	5	3
1-7A	5	3
1-7B	5	3
1-8	5	3
1-8A	5	3
1-8C	5	3
1-8E	5	3
1-8F	5	3
1-9	5	3
2-1	5	3
2-1A	5	3
2-2	5	3
2-2A	5	3
2-3	5	3
2-3A	5	3
2-4	5	3
2-4E	5	3
3-1	5	3
3-2	5	3
3-3	5	3
3-4	5	3
3-5	5	3
4-1	5	3
4-2	5	3
4-3	5	3
4-3A	5	3
4-3C	5	3
4-3E	5	3
4-3F	5	3

# Differing Assignments



DB: LA 2020 12 - CENSUS  
Plan Type: Congress

Plan: HCAHB12 #112

---

	HCAHB12 #112	221ES-40 (Bryant)
4-3G	5	3
4-3J	5	3
4-3K	5	3
4-3L	5	3
4-3M	5	3
4-3N	5	3
5-1	5	3
5-1A	5	3
5-2	5	3
5-2A	5	3
6-1	5	3
6-2	5	3
6-3	5	3
6-4	5	3
7-1	5	3
7-2	5	3
7-2A	5	3
7-3	5	3
7-4	5	3
7-4A	5	3
7-5	5	3
7-5A	5	3
7-5C	5	3
8-1	5	3
8-2	5	3
8-3	5	3
<b>Washington</b>		
1-1	5	6
1-2	5	6
2-1	5	6
3-1	5	6
3-2	5	6
3-3	5	6
3-3A	5	6
3-3B	5	6
3-3C	5	6
4-1	5	6
4-1A	5	6
4-2A	5	6
4-3	5	6
4-3B	5	6
4-4	5	6
4-5	5	6
4-5B	5	6
4-6	5	6

# Differing Assignments



DB: LA 2020 12 - CENSUS  
Plan Type: Congress

**Plan: HCAHB12 #112**

---

	HCAHB12 #112	221ES-40 (Bryant)
4-7	5	6
4-7B	5	6
4-8	5	6
4-9	5	6
4-9A	5	6
4-10	5	6
4-10A	5	6
4-11	5	6
5-1	5	6
5-2	5	6
5-3	5	6
6-1	5	6
6-2	5	6
6-3	5	6
6-4	5	6
7-1	5	6
7-1A	5	6
7-2	5	6
7-3	5	6
8-1	5	6
8-2	5	6
8-3	5	6
9-1	5	6
<b>West Baton Rouge</b>		
1A	2	5
1B	2	5
1C	2	5
2A	6	5
2B	2	5
3	6	5
4	6	5
5	6	5
6	2	5
7A	6	5
7B	2	5
8	2	5
9	6	5
10A	2	5
10B	2	5
11A	2	5
11B	2	5
12	6	5
13A	2	5
13B	2	5
14	2	5



# Differing Assignments



DB: LA 2020 12 - CENSUS  
Plan Type: Congress

Plan: HCAHB12 #112

---

	HCAHB12 #112	221ES-40 (Bryant)
15	2	5
16	6	5
17	6	5
18	6	5
19	6	5
20	6	5
21	6	5
22	6	5
<b>Winn</b>		
1-1	5	4
1-3	5	4
1-4	5	4
1-5	5	4
2-1	5	4
2-2	5	4
2-3	5	4
3-1A	5	4
3-1B	5	4
3-1C	5	4
3-2	5	4
3-2A	5	4
3-3	5	4
4-1	5	4
4-2	5	4
4-2A	5	4
4-3	5	4
4-5	5	4
5-1	5	4
5-2	5	4
5-3	5	4
5-5	5	4
6-1	5	4
6-1A	5	4
6-3	5	4
6-6	5	4
7-1	5	4
7-1A	5	4
7-2	5	4
7-2A	5	4
7-7	5	4

# Plan Statistics

Plan: HCAHB12 #112

<u>Districts:</u>	<u># of Members</u>	<u>Actual Population</u>	<u>Ideal Population</u>	<u>Absolute Deviation</u>	<u>Relative Deviation</u>
District 1	1	776,268	776,292	-24	-0.003%
District 2	1	776,317	776,292	25	0.003%
District 3	1	776,275	776,292	-17	-0.002%
District 4	1	776,298	776,292	6	0.001%
District 5	1	776,312	776,292	20	0.003%
District 6	1	776,287	776,292	-5	-0.001%
<b>Grand Total:</b>	<b>6</b>	<b>4,657,757</b>	<b>4,657,752</b>		

Ideal Population Per Member: 776292  
 Number of Districts for Plan Type: 6  
 Range of District Populations: 776,268 to 776,317  
 Absolute Mean Deviation: 8  
 Absolute Range: -24 to 25  
 Absolute Overall Range: 49  
 Relative Mean Deviation: 0.00%  
 Relative Range: 0.00% to 0.00%  
 Relative Overall Range: 0.00%

<b><i>Ideal - Actual:</i></b>	<b>-5</b>
<b><i>Remainder:</i></b>	<b>5</b>
<b><i>Unassigned Population:</i></b>	<b>0</b>

# Total Population

Plan: HCAHB12 #112

	Total Population	Total White	Total Black	Total Asian	Total American Indian	Total Other	Total Hispanic	VAP Total	VAP White	VAP Black	VAP Asian	VAP American Indian	VAP Other	VAP Hispanic Total
District 1	776,268	538,478	115,838	24,415	22,805	74,732	93,429	601,559	432,961	81,105	17,955	16,212	53,326	65,811
	100.000%	69.368%	14.922%	3.145%	2.938%	9.627%	12.036%	100.000%	71.973%	13.482%	2.985%	2.695%	8.865%	10.940%
District 2	776,317	219,200	473,236	23,773	8,169	51,939	67,228	600,203	185,728	352,018	18,988	6,361	37,108	47,041
	100.000%	28.236%	60.959%	3.062%	1.052%	6.690%	8.660%	100.000%	30.944%	58.650%	3.164%	1.060%	6.183%	7.838%
District 3	776,275	508,115	205,820	16,256	11,306	34,778	41,065	586,488	398,253	144,434	11,650	8,287	23,864	27,487
	100.000%	65.456%	26.514%	2.094%	1.456%	4.480%	5.290%	100.000%	67.905%	24.627%	1.986%	1.413%	4.069%	4.687%
District 4	776,298	378,563	345,702	12,456	13,274	26,303	31,380	593,888	306,472	249,538	9,261	10,171	18,446	21,290
	100.000%	48.765%	44.532%	1.605%	1.710%	3.388%	4.042%	100.000%	51.604%	42.018%	1.559%	1.713%	3.106%	3.585%
District 5	776,312	519,232	204,793	8,339	17,667	26,281	33,362	594,596	408,668	146,986	6,233	13,130	19,579	24,322
	100.000%	66.884%	26.380%	1.074%	2.276%	3.385%	4.297%	100.000%	68.730%	24.720%	1.048%	2.208%	3.293%	4.091%
District 6	776,287	494,064	197,730	22,049	13,839	48,605	56,085	593,814	392,429	141,688	16,329	10,079	33,289	37,711
	100.000%	63.645%	25.471%	2.840%	1.783%	6.261%	7.225%	100.000%	66.086%	23.861%	2.750%	1.697%	5.606%	6.351%
Grand Total	4,657,757	2,657,652	1,543,119	107,288	87,060	262,638	322,549	3,570,548	2,124,511	1,115,769	80,416	64,240	185,612	223,662
	100.000%	57.059%	33.130%	2.303%	1.869%	5.639%	6.925%	100.000%	59.501%	31.249%	2.252%	1.799%	5.198%	6.264%

# Voter Registration

Plan: HCAHB12 #112

	Reg Total Dec 2021	Reg White Dec 2021	Reg Black Dec 2021	Reg Other Dec 2021	Reg Dem Total Dec 2021	Reg Rep Total Dec 2021	Reg Other Total Dec 2021
District 1	489,060	389,345	56,094	43,621	136,809	204,591	147,660
	81.299%	79.611%	11.470%	8.919%	27.974%	41.834%	30.193%
District 2	495,732	152,592	304,045	39,095	313,790	58,535	123,407
	82.594%	30.781%	61.333%	7.886%	63.298%	11.808%	24.894%
District 3	479,827	344,683	114,946	20,198	168,883	180,513	130,431
	81.814%	71.835%	23.956%	4.209%	35.197%	37.620%	27.183%
District 4	477,452	255,320	203,167	18,965	207,800	152,752	116,900
	80.394%	53.476%	42.552%	3.972%	43.523%	31.993%	24.484%
District 5	477,950	344,702	117,555	15,693	174,365	186,653	116,932
	80.382%	72.121%	24.596%	3.283%	36.482%	39.053%	24.465%
District 6	474,325	341,347	106,941	26,037	159,357	185,736	129,232
	79.878%	71.965%	22.546%	5.489%	33.597%	39.158%	27.245%
Grand Total	2,894,346	1,827,989	902,748	163,609	1,161,004	968,780	764,562

# Splits

Plan: HCAHB12 #112

	Total Population	Total White	Total Black	Total Asian	Total American Indian	Total Other	VAP Total	VAP White	VAP Black	VAP Asian	VAP American Indian	VAP Other	Reg Total Dec 2021	Reg White Dec 2021	Reg Black Dec 2021	Reg Other Dec 2021
District 1																
*Jefferson	245,132	158,171	32,307	12,015	4,487	38,152	196,104	132,171	23,683	9,056	3,385	27,809	150,722	117,879	13,544	19,299
*Lafourche	43,701	35,524	1,903	534	2,961	2,779	33,330	28,074	1,095	393	1,960	1,808	25,831	23,680	621	1,530
*Orleans	48,050	38,141	3,973	1,929	569	3,438	39,613	31,740	3,348	1,475	448	2,602	32,683	27,730	1,551	3,402
Plaquemines	23,515	14,287	5,428	1,317	697	1,786	17,334	10,856	3,857	925	500	1,196	13,908	9,513	3,134	1,261
St. Bernard	43,764	24,497	12,309	1,381	947	4,630	31,775	18,992	7,944	982	688	3,169	25,653	18,233	5,497	1,923
St. Tammany	264,570	196,641	38,643	5,774	5,660	17,852	202,228	154,621	26,761	4,075	4,161	12,610	178,779	145,724	21,142	11,913
*Tangipahoa	39,681	29,260	7,152	457	938	1,874	30,157	22,966	4,838	312	696	1,345	23,497	19,131	3,395	971
*Terrebonne	67,855	41,957	14,123	1,008	6,546	4,221	51,018	33,541	9,579	737	4,374	2,787	37,987	27,455	7,210	3,322
District 1	776,268	538,478	115,838	24,415	22,805	74,732	601,559	432,961	81,105	17,955	16,212	53,326	489,060	389,345	56,094	43,621
	100.000%	69.368%	14.922%	3.145%	2.938%	9.627%	100.000%	71.973%	13.482%	2.985%	2.695%	8.865%	81.299%	79.611%	11.470%	8.919%
District 2																
*Ascension	20,892	5,625	13,842	140	170	1,115	15,426	4,672	9,766	104	113	771	13,180	3,868	8,794	518
*Assumption	6,710	2,870	3,622	23	44	151	5,270	2,334	2,764	15	33	124	4,756	1,997	2,702	57
*East Baton Rouge	94,325	5,624	85,793	483	369	2,056	70,960	5,094	63,632	382	289	1,563	58,983	2,990	54,254	1,739
*Iberville	21,073	8,453	11,316	173	147	984	16,631	7,182	8,363	125	114	847	13,630	5,355	7,955	320
*Jefferson	195,649	62,764	93,910	11,009	3,199	24,767	148,550	51,964	68,492	8,636	2,450	17,008	112,379	41,737	56,032	14,610
*Orleans	335,947	88,321	214,996	10,927	3,097	18,606	266,583	78,512	162,720	9,045	2,500	13,806	223,561	64,256	139,974	19,331
*St. Charles	34,943	21,021	11,091	501	610	1,720	26,288	16,352	7,957	307	457	1,215	23,249	15,046	7,109	1,094
St. James	20,192	9,973	9,762	60	82	315	15,505	7,883	7,297	31	64	230	14,966	7,254	7,501	211
*St. John the Baptist	32,678	8,833	21,557	244	303	1,741	24,826	7,363	15,831	183	235	1,214	22,433	6,282	15,109	1,042
*West Baton Rouge	13,908	5,716	7,347	213	148	484	10,164	4,372	5,196	160	106	330	8,595	3,807	4,615	173
District 2	776,317	219,200	473,236	23,773	8,169	51,939	600,203	185,728	352,018	18,988	6,361	37,108	495,732	152,592	304,045	39,095
	100.000%	28.236%	60.959%	3.062%	1.052%	6.690%	100.000%	30.944%	58.650%	3.164%	1.060%	6.183%	82.594%	30.781%	61.333%	7.886%
District 3																
Acadia	57,576	44,480	10,864	238	573	1,421	42,943	34,071	7,383	173	400	916	37,678	30,555	6,407	716
Calcasieu	216,785	139,772	59,386	4,702	3,536	9,389	163,166	108,789	41,898	3,359	2,604	6,516	120,511	85,659	29,513	5,339
Cameron	5,617	5,232	125	30	75	155	4,358	4,100	79	23	47	109	4,789	4,610	88	91
Iberia	69,929	39,206	24,556	2,123	794	3,250	52,791	31,295	17,069	1,562	581	2,284	44,526	28,287	14,352	1,887
Jefferson Davis	32,250	25,066	5,837	183	472	692	24,039	19,121	4,006	111	325	476	20,013	16,350	3,202	461
Lafayette	241,753	153,363	65,136	6,454	3,210	13,590	183,875	121,608	45,917	4,664	2,387	9,299	153,493	108,645	36,481	8,367
*St. Martin	50,399	31,974	15,908	590	505	1,422	38,250	25,187	11,282	402	383	996	34,127	22,955	10,380	792
*St. Mary	44,607	24,545	15,198	489	1,518	2,857	34,054	19,719	11,013	319	1,072	1,931	27,921	17,117	9,529	1,275
Vermilion	57,359	44,477	8,810	1,447	623	2,002	43,012	34,363	5,787	1,037	488	1,337	36,769	30,505	4,994	1,270
District 3	776,275	508,115	205,820	16,256	11,306	34,778	586,488	398,253	144,434	11,650	8,287	23,864	479,827	344,683	114,946	20,198
	100.000%	65.456%	26.514%	2.094%	1.456%	4.480%	100.000%	67.905%	24.627%	1.986%	1.413%	4.069%	81.814%	71.835%	23.956%	4.209%

# Splits

Plan: HCAHB12 #112

	Total Population	Total White	Total Black	Total Asian	Total American Indian	Total Other	VAP Total	VAP White	VAP Black	VAP Asian	VAP American Indian	VAP Other	Reg Total Dec 2021	Reg White Dec 2021	Reg Black Dec 2021	Reg Other Dec 2021
District 4																
Bienville	12,981	6,950	5,600	57	207	167	10,073	5,486	4,284	30	162	111	8,847	4,843	3,917	87
Bossier	128,746	81,052	32,551	3,492	3,273	8,378	95,876	62,931	22,440	2,448	2,477	5,580	69,743	50,861	14,838	4,044
Caddo	237,848	103,457	119,304	4,034	3,840	7,213	182,407	85,059	86,359	3,008	2,958	5,023	151,296	73,113	71,249	6,934
Claiborne	14,170	7,263	6,360	88	185	274	11,507	6,258	4,824	55	140	230	8,598	4,632	3,820	146
De Soto	26,812	15,284	9,973	117	740	698	20,440	11,909	7,425	86	557	463	18,713	11,330	6,810	573
East Carroll	7,459	2,054	5,272	29	43	61	5,901	1,773	4,043	19	27	39	4,709	1,306	3,359	44
Lincoln	48,396	26,034	19,364	892	662	1,444	38,655	21,306	15,119	744	526	960	25,649	15,672	9,016	961
Madison	10,017	3,475	6,363	20	59	100	7,435	2,906	4,391	9	48	81	7,278	2,494	4,674	110
Morehouse	25,629	12,281	12,484	160	370	334	20,062	10,095	9,300	117	279	271	16,922	8,505	8,131	286
Natchitoches	37,515	19,361	15,725	255	861	1,313	29,349	16,010	11,415	198	683	1,043	23,107	12,850	9,224	1,033
*Ouachita	90,928	30,328	55,129	1,785	944	2,742	67,556	25,072	38,252	1,426	716	2,090	54,593	19,639	32,857	2,097
*Rapides	56,205	19,996	32,831	1,182	688	1,508	42,761	16,709	23,459	893	511	1,189	33,915	13,525	18,866	1,524
Red River	7,620	4,195	3,106	25	171	123	5,714	3,338	2,164	3	116	93	5,631	3,130	2,418	83
Tensas	4,147	1,744	2,312	23	26	42	3,235	1,446	1,728	12	23	26	3,455	1,503	1,917	35
Union	21,107	14,460	5,224	62	338	1,023	16,632	11,807	3,861	39	254	671	15,221	11,066	3,692	463
Webster	36,967	22,735	12,679	208	687	658	28,753	18,144	9,464	154	558	433	22,737	14,938	7,339	460
West Carroll	9,751	7,894	1,425	27	180	225	7,532	6,223	1,010	20	136	143	7,038	5,913	1,040	85
District 4	776,298	378,563	345,702	12,456	13,274	26,303	593,888	306,472	249,538	9,261	10,171	18,446	477,452	255,320	203,167	18,965
	100.000%	48.765%	44.532%	1.605%	1.710%	3.388%	100.000%	51.604%	42.018%	1.559%	1.713%	3.106%	80.394%	53.476%	42.552%	3.972%
District 5																
Allen	22,750	16,327	4,490	246	947	740	17,510	12,751	3,275	182	646	656	12,201	9,478	2,217	506
Avoyelles	39,693	25,625	11,678	434	767	1,189	30,578	20,269	8,311	379	570	1,049	23,426	16,534	6,294	598
Beauregard	36,549	29,529	4,649	402	1,052	917	27,489	22,304	3,495	269	773	648	22,294	18,771	2,369	1,154
Caldwell	9,645	7,646	1,632	51	150	166	7,478	5,969	1,224	46	116	123	6,031	5,124	818	89
Catahoula	8,906	5,776	2,395	46	119	570	6,951	4,557	1,736	33	87	538	6,467	4,639	1,770	58
Concordia	18,687	10,275	7,725	122	233	332	14,217	8,108	5,613	100	167	229	11,964	7,222	4,540	202
East Feliciana	19,539	11,516	7,341	91	262	329	16,183	9,740	5,918	61	198	266	13,600	7,959	5,186	455
Evangeline	32,350	21,354	9,235	241	280	1,240	24,408	16,460	6,483	187	217	1,061	20,553	14,566	5,643	344
Franklin	19,774	12,492	6,802	70	205	205	15,028	9,901	4,779	44	153	151	13,159	9,015	4,034	110
Grant	22,169	17,709	3,335	133	644	348	17,527	13,964	2,717	97	507	242	12,688	11,174	1,176	338
Jackson	15,031	9,967	4,166	175	255	468	11,783	7,967	3,125	140	174	377	9,449	6,647	2,610	192
La Salle	14,791	11,348	1,422	283	372	1,366	11,563	8,636	1,065	264	271	1,327	8,792	7,978	637	177
*Ouachita	69,440	58,217	6,088	1,003	1,717	2,415	52,644	44,902	4,038	692	1,343	1,669	45,159	40,876	2,801	1,482
Pointe Coupee	20,758	12,395	7,504	107	159	593	16,250	10,108	5,502	91	119	430	14,675	9,320	5,121	234
*Rapides	73,818	57,514	9,761	1,246	2,414	2,883	56,031	44,664	6,746	893	1,823	1,905	46,261	39,307	4,909	2,045

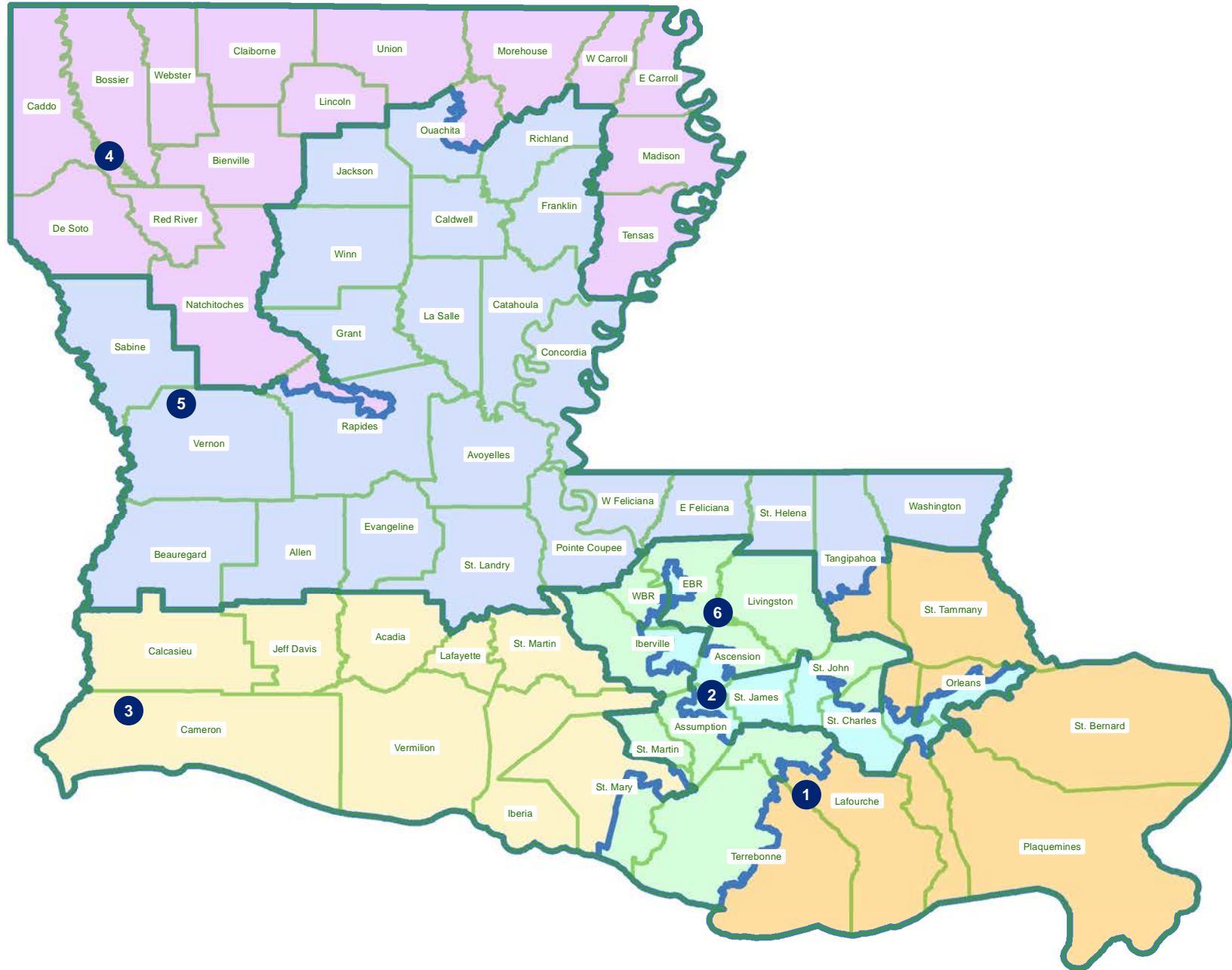
# Splits

Plan: HCAHB12 #112

	Total Population	Total White	Total Black	Total Asian	Total American Indian	Total Other	VAP Total	VAP White	VAP Black	VAP Asian	VAP American Indian	VAP Other	Reg Total Dec 2021	Reg White Dec 2021	Reg Black Dec 2021	Reg Other Dec 2021
District 5																
Richland	20,043	11,785	7,603	83	258	314	15,383	9,338	5,546	66	203	230	13,662	8,470	4,961	231
Sabine	22,155	15,036	3,861	94	2,723	441	17,064	12,054	2,655	66	1,970	319	14,547	11,023	2,184	1,340
St. Helena	10,920	4,527	6,031	39	134	189	8,463	3,805	4,371	28	109	150	8,321	3,628	4,565	128
St. Landry	82,540	43,611	35,836	499	636	1,958	61,811	34,209	25,497	353	451	1,301	54,482	30,093	23,005	1,384
*Tangipahoa	93,476	52,076	34,727	1,017	1,516	4,140	71,334	42,239	24,379	788	1,131	2,797	52,759	33,781	17,130	1,848
Vernon	48,750	35,087	7,611	1,442	1,600	3,010	36,261	26,765	5,133	1,074	1,160	2,129	24,060	19,182	3,011	1,867
Washington	45,463	29,943	13,434	216	736	1,134	34,951	23,743	9,732	154	561	761	27,587	18,835	8,102	650
West Feliciana	15,310	10,883	3,740	89	225	373	12,783	9,283	2,951	56	174	319	7,407	5,092	2,180	135
Winn	13,755	8,594	3,727	210	263	961	10,906	6,932	2,695	170	207	902	8,406	5,988	2,292	126
District 5	776,312	519,232	204,793	8,339	17,667	26,281	594,596	408,668	146,986	6,233	13,130	19,579	477,950	344,702	117,555	15,693
	100.000%	66.884%	26.380%	1.074%	2.276%	3.385%	100.000%	68.730%	24.720%	1.048%	2.208%	3.293%	80.382%	72.121%	24.596%	3.283%
District 6																
*Ascension	105,608	75,516	18,374	2,160	1,834	7,724	76,531	56,464	12,373	1,410	1,277	5,007	66,737	52,932	10,020	3,785
*Assumption	14,329	10,852	2,598	73	214	592	11,346	8,811	1,943	42	164	386	9,683	7,703	1,808	172
*East Baton Rouge	362,456	190,445	127,605	15,942	4,358	24,106	284,652	158,787	93,158	12,217	3,458	17,032	220,281	135,242	70,421	14,618
*Iberville	9,168	6,380	2,414	29	127	218	7,455	5,280	1,869	24	107	175	6,832	4,777	1,942	113
*Lafourche	53,856	36,186	13,952	491	1,263	1,964	41,289	28,764	9,982	345	817	1,381	32,447	24,787	6,543	1,117
Livingston	142,282	116,855	12,658	1,697	3,111	7,961	105,141	88,432	8,136	1,099	2,311	5,163	84,568	76,062	5,425	3,081
*St. Charles	17,606	12,529	2,837	336	315	1,589	13,253	9,802	1,933	222	210	1,086	11,736	9,263	1,688	785
*St. John the Baptist	9,799	5,044	3,639	159	162	795	7,677	4,259	2,606	140	115	557	6,480	3,937	2,125	418
*St. Martin	1,368	1,285	13	7	34	29	1,154	1,091	11	5	30	17	993	979	1	13
*St. Mary	4,799	2,404	793	346	152	1,104	3,467	1,875	507	274	101	710	2,289	1,595	362	332
*Terrebonne	41,725	27,977	9,024	735	2,091	1,898	31,487	22,090	6,217	502	1,376	1,302	23,733	17,940	4,356	1,437
*West Baton Rouge	13,291	8,591	3,823	74	178	625	10,362	6,774	2,953	49	113	473	8,546	6,130	2,250	166
District 6	776,287	494,064	197,730	22,049	13,839	48,605	593,814	392,429	141,688	16,329	10,079	33,289	474,325	341,347	106,941	26,037
	100.000%	63.645%	25.471%	2.840%	1.783%	6.261%	100.000%	66.086%	23.861%	2.750%	1.697%	5.606%	79.878%	71.965%	22.546%	5.489%

# HCAHB12 #112

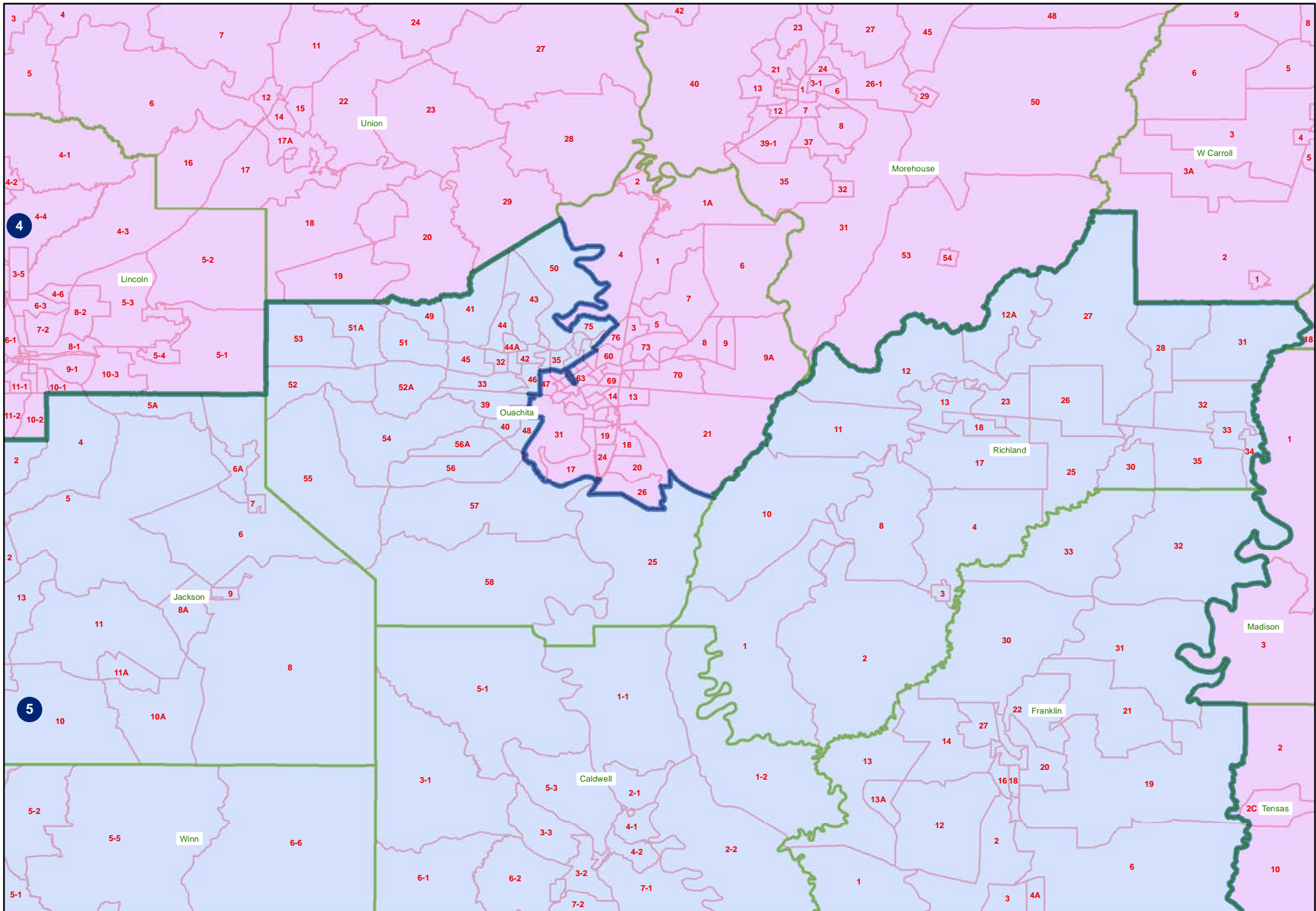
Statewide





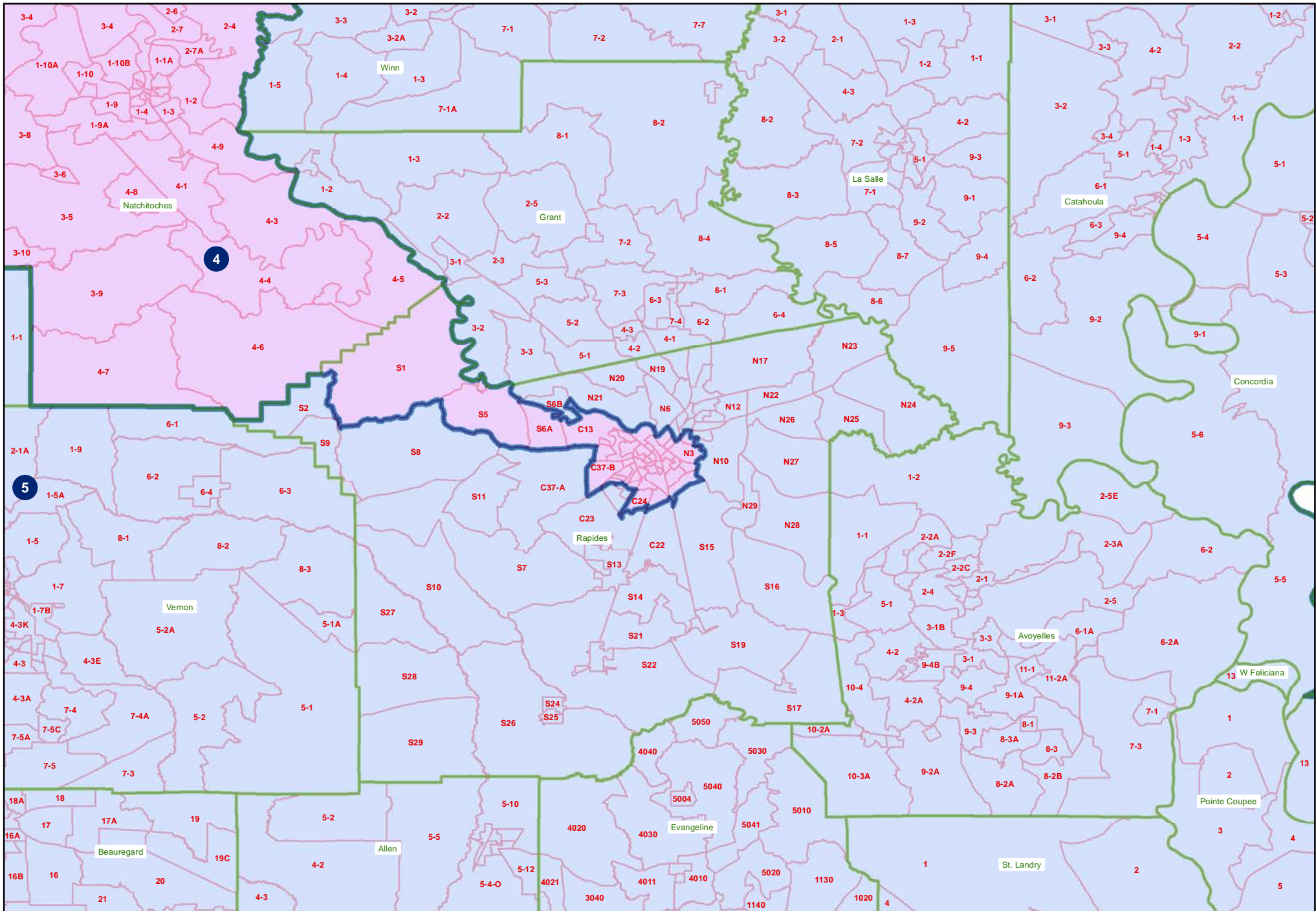
# HCAHB12 #112

## Ouachita Parish

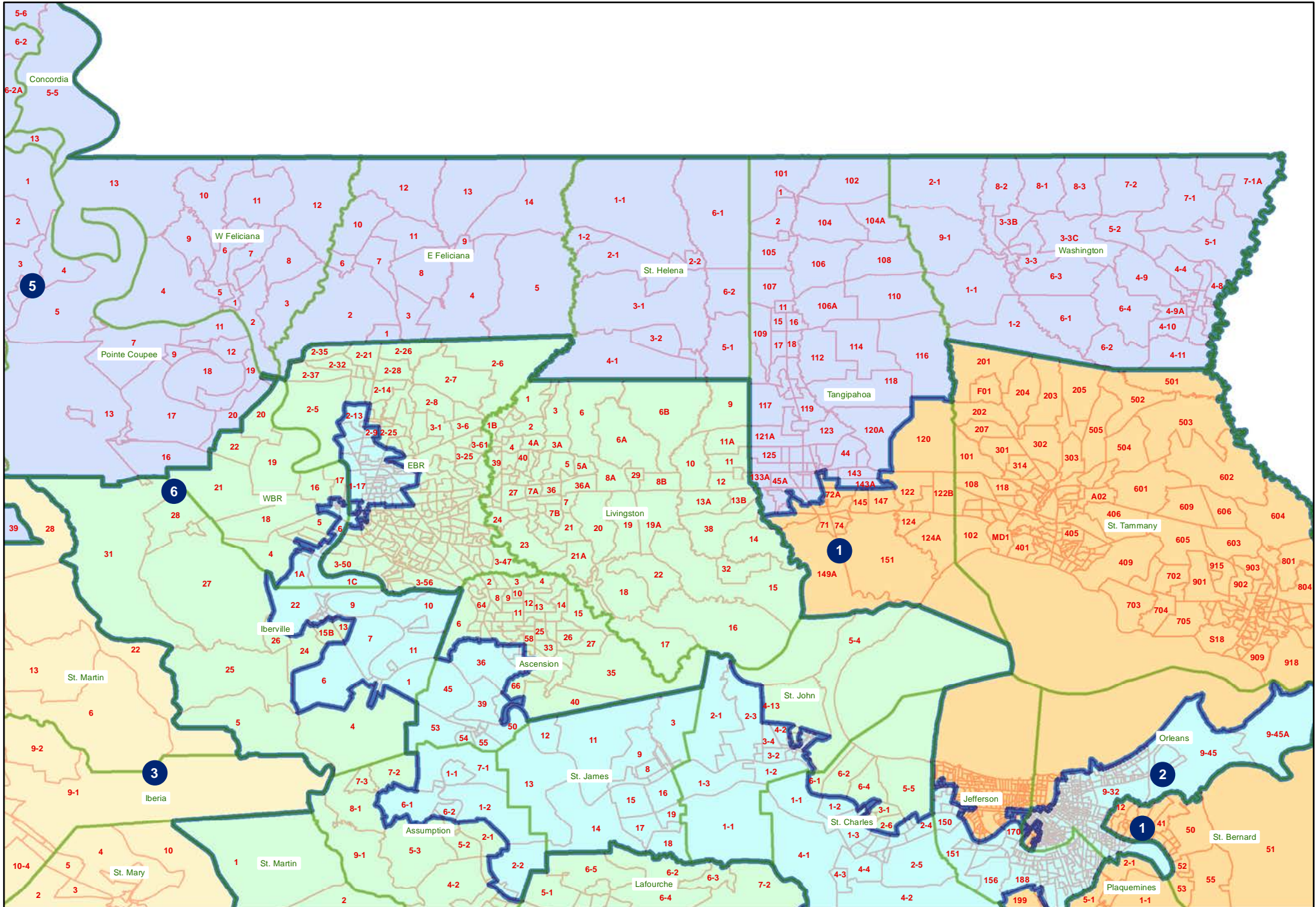


# HCAHB12 #112

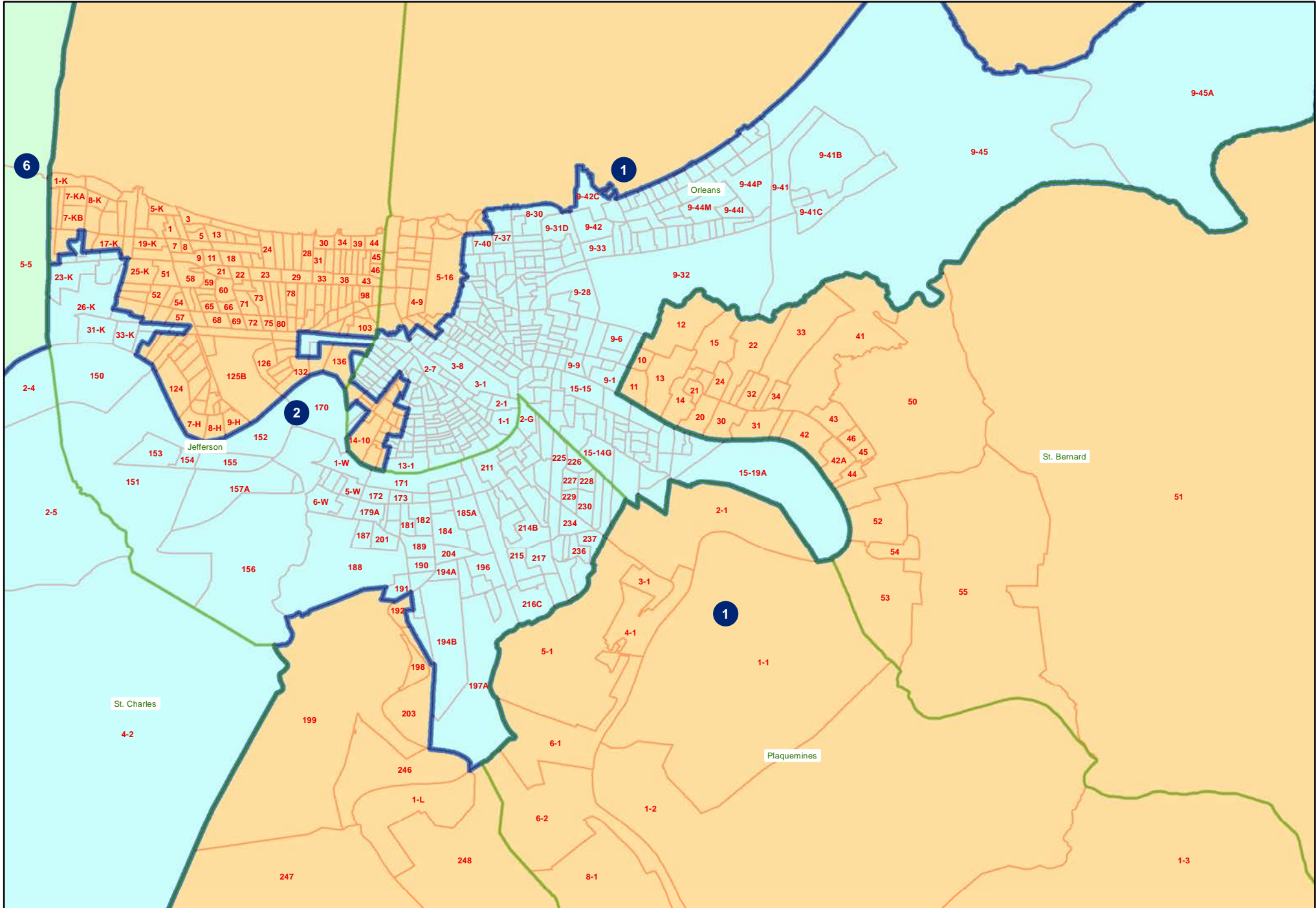
## Rapides Parish



HCAHB12 #112  
Florida Parishes



HCAHB12 #112  
Orleans and Jefferson



# HCAHB12 #112

## St. Mary, Terrebonne, and Lafourche

