

2022 First Extraordinary Session

HOUSE BILL NO. 22

BY REPRESENTATIVE IVEY

REAPPORTIONMENT/JUDGES: Provides for the redistricting of the supreme court (Item #6)

1 AN ACT

2 To enact R.S. 13:101.2 and 101.3 and to repeal R.S. 13:101, 101.1, and 312.4, relative to the  
3 supreme court; to provide relative to redistricting supreme court justice districts; to  
4 provide for the filling of vacancies; to eliminate statutory provisions for a temporary  
5 additional judgeship for the Court of Appeal for the Fourth Circuit and such judge's  
6 appointment to the supreme court; and to provide for related matters.

7 Be it enacted by the Legislature of Louisiana:

8 Section 1. R.S. 13:101.2 and 101.3 are hereby enacted to read as follows:

9 §101.2. Supreme court districts; justices

10 The state shall be divided into seven supreme court districts. The supreme  
11 court shall be composed of one justice elected from each of the seven districts as set  
12 forth below:

- 13 (1) District 1 is composed of Precincts 1, 2, 3, 4, 5, 7, 8, 9, 10, 11, 12, 13, 14,
- 14 15, 16, 17, 18, 19, 20, 21, 22, 23, 24, 25, 26, 27, 28, 29, 30, 31, 32, 33, 34, 35, 36, 37,
- 15 38, 39, 40, 41, 42, 43, 44, 45, 46, 51, 52, 53, 54, 55, 56, 57, 58, 59, 60, 61, 62, 63, 64,
- 16 65, 66, 67, 68, 69, 70, 71, 72, 73, 74, 75, 76, 77, 78, 79, 80, 81, 82, 83, 84, 85, 86, 87,
- 17 88, 89, 90, 91, 92, 93, 94, 95, 96, 97, 98, 99, 100, 101, 102, 103, 105, 106, 108, 116,
- 18 117, 118, 119, 120, 121, 122, 123, 124, 125A, 125B, 126, 127, 128, 129, 130, 132,
- 19 247, 248, 1-GI, 1-H, 2-H, 3-H, 4-H, 5-H, 6-H, 7-H, 8-H, 9-H, 1-K, 2-K, 3-K, 4-K,
- 20 5-K, 6-KA, 6-KB, 7-KA, 7-KB, 8-K, 9-K, 10-K, 11-K, 12-K, 13-KA, 13-KB, 14-K,

1        15-K, 16-K, 17-K, 18-K, 19-K, 20-K, 25-K, 27-K, 28-K, 29-K, 34-K, 35-K, and 1-L  
 2        of Jefferson Parish; Precincts 3-20, 4-8, 4-9, 4-11, 4-14, 4-15, 4-17, 4-17A, 4-18,  
 3        4-20, 4-21, 4-22, 4-23, 5-13, 5-15, 5-16, 5-17, 5-18, 9-45A, 17-17, 17-18, 17-18A,  
 4        17-19, and 17-20 of Orleans Parish; Plaquemines Parish; St. Bernard Parish; St.  
 5        Tammany Parish; and Washington Parish.

6                (2) District 2 is composed of Precincts 2-18D, 3-1, 3-2, 3-3, 3-4, and 4-1A  
 7        of Bossier Parish; Caddo Parish; Claiborne Parish; Concordia Parish; Precincts 1-1,  
 8        1-2, 1-3, 1-4, 1-5, 1-6, 1-10, 1-11, 1-13, 1-14, 1-15, 1-16, 1-17, 1-18, 1-19, 1-20,  
 9        1-21, 1-22, 1-23, 1-24, 1-25, 1-26, 1-27, 1-28, 1-29, 1-30, 1-31, 1-32, 1-36, 1-37,  
 10        1-38, 1-44, 1-45, 1-46, 1-50, 1-51, 1-54, 1-58, 1-61, 1-62, 1-63, 1-67, 1-68, 1-70,  
 11        1-71, 1-76, 1-77, 1-78, 1-81, 1-82, 1-83, 1-84, 1-85, 1-86, 1-87, 1-88, 1-91, 1-92,  
 12        1-93, 1-94, 1-95, 1-97, 1-100, 1-101, 1-102, 1-104, 2-1, 2-2, 2-3, 2-4, 2-5, 2-9, 2-10,  
 13        2-11, 2-12, 2-13, 2-14, 2-15, 2-16, 2-17, 2-18, 2-19, 2-20, 2-21, 2-22, 2-23, 2-24,  
 14        2-25, 2-26, 2-27, 2-28, 2-29, 2-30, 2-31, 2-32, 2-34, 2-35, 2-36, 2-37, 3-8, 3-12, 3-24,  
 15        3-28, 3-32, 3-54, and 3-72 of East Baton Rouge Parish; East Carroll Parish; East  
 16        Feliciana Parish; Madison Parish; Morehouse Parish; Precincts 3, 5, 8, 9, 9A, 10, 11,  
 17        12, 13, 14, 15, 16, 17, 18, 19, 20, 21, 22, 23, 24, 26, 27, 27A, 28, 29, 30, 34, 47, 59,  
 18        60, 62, 63, 65, 65A, 66, 67, 68, 69, 70, 72, 73, 74, and 79 of Ouachita Parish; Tensas  
 19        Parish; Precincts 1, 2, 3, 4, 8, 9, 10, 24, and 26 of Union Parish; Webster Parish;  
 20        West Carroll Parish; and West Feliciana Parish.

21                (3) District 3 is composed of Acadia Parish; Allen Parish; Beauregard Parish;  
 22        Calcasieu Parish; Cameron Parish; Jefferson Davis Parish; Lafayette Parish; and  
 23        Vermilion Parish.

24                (4) District 4 is composed of Bienville Parish; Precincts 1-1, 1-2, 1-3, 1-3A,  
 25        1-3B, 1-4, 1-5, 2-1, 2-2, 2-3, 2-3A, 2-4, 2-5A, 2-6, 2-7, 2-8, 2-9, 2-10, 2-11, 2-11A,  
 26        2-12A, 2-12B, 2-12C, 2-13, 2-14, 2-15, 2-16, 2-17A, 2-17B, 2-18B, 2-18C, 2-18E,  
 27        2-18F, 2-18G, 2-19, 2-20, 2-21A, 2-21B, 2-21C, 2-21D, 2-22A, 2-22B, 2-22C, 2-23,  
 28        4-2, 4-3A, 4-3B, 4-3C, 4-3D, 4-4A, 4-4B, 4-5A, 4-6A, 4-6B, 4-7A, 4-7B, 4-8A,  
 29        4-8B, 4-8C, 4-8D, 4-8E, 4-8G, 4-9, 4-10, 4-11A, 4-11B, and 4-11C of Bossier

1 Parish; Caldwell Parish; Catahoula Parish; DeSoto Parish; Franklin Parish; Grant  
 2 Parish; Jackson Parish; LaSalle Parish; Lincoln Parish; Natchitoches Parish;  
 3 Precincts 1, 1A, 2, 4, 6, 7, 25, 31, 32, 33, 35, 36, 37, 38, 39, 40, 41, 42, 43, 44, 44A,  
 4 45, 46, 48, 49, 50, 51, 51A, 52, 52A, 53, 54, 55, 56, 56A, 57, 58, 61, 64, 71, 75, 76,  
 5 77, and 78 of Ouachita Parish; Rapides Parish; Red River Parish; Richland Parish;  
 6 Sabine Parish; Precincts 5, 6, 7, 11, 12, 13, 14, 15, 16, 17, 17A, 18, 19, 20, 22, 23,  
 7 27, 28, and 29 of Union Parish; Vernon Parish; and Winn Parish.

8 (5) District 5 is composed of Ascension Parish; Precincts 1-7, 1-8, 1-9, 1-12,  
 9 1-33, 1-34, 1-35, 1-39, 1-40, 1-41, 1-42, 1-43, 1-47, 1-48, 1-49, 1-52, 1-53, 1-55,  
 10 1-56, 1-57, 1-59, 1-60, 1-64, 1-65, 1-66, 1-69, 1-72, 1-73, 1-74, 1-75, 1-79, 1-80,  
 11 1-89, 1-90, 1-98, 1-99, 1-103, 1-105, 1-107, 2-6, 2-7, 2-8, 2-33, 3-1, 3-2, 3-3, 3-4,  
 12 3-5, 3-6, 3-7, 3-9, 3-10, 3-11, 3-13, 3-14, 3-15, 3-16, 3-17, 3-18, 3-19, 3-20, 3-21,  
 13 3-22, 3-23, 3-25, 3-26, 3-27, 3-29, 3-30, 3-31, 3-33, 3-34, 3-35, 3-36, 3-37, 3-38,  
 14 3-39, 3-40, 3-41, 3-43, 3-44, 3-45, 3-46, 3-47, 3-48, 3-49, 3-50, 3-51, 3-52, 3-53,  
 15 3-55, 3-56, 3-57, 3-58, 3-59, 3-60, 3-61, 3-62, 3-63, 3-64, 3-65, 3-66, 3-67, 3-68,  
 16 3-69, 3-70, and 3-71 of East Baton Rouge Parish; Livingston Parish; St. Helena  
 17 Parish; and Tangipahoa Parish.

18 (6) District 6 is composed of Assumption Parish; Avoyelles Parish;  
 19 Evangeline Parish; Iberia Parish; Iberville Parish; Lafourche Parish; Pointe Coupee  
 20 Parish; St. James Parish; St. Landry Parish; St. Martin Parish; St. Mary Parish;  
 21 Terrebonne Parish; and West Baton Rouge Parish.

22 (7) District 7 is composed of Precincts 104, 115, 131, 133, 134, 136, 138,  
 23 150, 151, 152, 153, 154, 155, 156, 157A, 157B, 170, 171, 172, 173, 174, 175, 176,  
 24 177, 178, 179A, 179B, 180, 181, 182, 183, 184, 185A, 185B, 187, 188, 189, 190,  
 25 191, 192, 193A, 193B, 194A, 194B, 195, 196, 197A, 197B, 198, 199, 200, 201, 202,  
 26 203, 204, 205, 210, 211, 212, 213A, 213B, 213C, 214A, 214B, 215, 216A, 216B,  
 27 216C, 217, 225, 226, 227, 228, 229, 230, 231, 232A, 232B, 234, 235, 236, 237,  
 28 238A, 238B, 246, 1-G, 2-G, 3-G, 4-G, 5-G, 6-G, 7-G, 8-G, 9-G, 10-G, 11-G, 12-G,  
 29 13-G, 21-K, 22-K, 23-K, 24-K, 26-K, 30-K, 31-K, 33-K, 1-W, 2-W, 3-W, 4-W, 5-W,

1 6-W, and 7-W of Jefferson Parish; Precincts 1-1, 1-2, 1-5, 1-6, 2-1, 2-2, 2-4, 2-6, 2-7,  
2 3-1, 3-8, 3-9, 3-12, 3-14, 3-15, 3-18, 3-19, 4-2, 4-3, 4-5, 4-6, 4-7, 5-1, 5-2, 5-3, 5-5,  
3 5-7, 5-8, 5-9, 5-10, 5-11, 5-12, 6-1, 6-2, 6-4, 6-6, 6-7, 6-8, 6-9, 7-1, 7-2, 7-4, 7-5, 7-6,  
4 7-7, 7-8, 7-9A, 7-10, 7-11, 7-12, 7-13, 7-14, 7-15, 7-16, 7-17, 7-18, 7-19, 7-20, 7-21,  
5 7-23, 7-24, 7-25, 7-25A, 7-26, 7-27, 7-27B, 7-28, 7-28A, 7-29, 7-30, 7-32, 7-33,  
6 7-35, 7-37, 7-37A, 7-40, 7-41, 7-42, 8-1, 8-2, 8-4, 8-6, 8-7, 8-8, 8-9, 8-12, 8-13,  
7 8-14, 8-15, 8-19, 8-20, 8-21, 8-22, 8-23, 8-24, 8-25, 8-26, 8-27, 8-28, 8-30, 9-1, 9-3,  
8 9-4, 9-5, 9-6, 9-7, 9-8, 9-9, 9-10, 9-11, 9-12, 9-13, 9-14, 9-15, 9-16, 9-17, 9-19, 9-21,  
9 9-23, 9-25, 9-26, 9-28, 9-28C, 9-29, 9-30, 9-30A, 9-31, 9-31A, 9-31B, 9-31D, 9-32,  
10 9-33, 9-34A, 9-35, 9-35A, 9-36, 9-36B, 9-37, 9-38, 9-38A, 9-39, 9-39B, 9-40,  
11 9-40A, 9-40C, 9-41, 9-41A, 9-41B, 9-41C, 9-41D, 9-42, 9-42C, 9-43A, 9-43B,  
12 9-43C, 9-43E, 9-43F, 9-43G, 9-43H, 9-43I, 9-43J, 9-43K, 9-43L, 9-43M, 9-43N,  
13 9-44, 9-44A, 9-44B, 9-44D, 9-44E, 9-44F, 9-44G, 9-44I, 9-44J, 9-44L, 9-44M,  
14 9-44N, 9-44O, 9-44P, 9-44Q, 9-45, 10-3, 10-6, 10-7, 10-8, 10-9, 10-11, 10-12,  
15 10-13, 10-14, 11-2, 11-3, 11-4, 11-5, 11-8, 11-9, 11-10, 11-11, 11-12, 11-13, 11-14,  
16 11-17, 12-1, 12-2, 12-3, 12-4, 12-5, 12-6, 12-7, 12-8, 12-9, 12-10, 12-11, 12-12,  
17 12-13, 12-14, 12-16, 12-17, 12-19, 13-1, 13-2, 13-3, 13-4, 13-5, 13-6, 13-7, 13-8,  
18 13-9, 13-10, 13-11, 13-12, 13-13, 13-14, 13-15, 13-16, 14-1, 14-2, 14-3, 14-4, 14-5,  
19 14-6, 14-7, 14-8, 14-9, 14-10, 14-11, 14-12, 14-13A, 14-14, 14-15, 14-16, 14-17,  
20 14-18A, 14-19, 14-20, 14-21, 14-23, 14-24A, 14-25, 14-26, 15-1, 15-2, 15-3, 15-5,  
21 15-6, 15-8, 15-9, 15-10, 15-11, 15-12, 15-12A, 15-13, 15-13A, 15-13B, 15-14,  
22 15-14A, 15-14B, 15-14C, 15-14D, 15-14E, 15-14F, 15-14G, 15-15, 15-15A, 15-15B,  
23 15-16, 15-17, 15-17A, 15-17B, 15-18, 15-18A, 15-18B, 15-18C, 15-18D, 15-18E,  
24 15-18F, 15-19, 15-19A, 15-19B, 15-19C, 16-1, 16-1A, 16-2, 16-3, 16-4, 16-5, 16-6,  
25 16-7, 16-8, 16-9, 17-1, 17-2, 17-3, 17-4, 17-5, 17-6, 17-7, 17-8, 17-9, 17-10, 17-11,  
26 17-12, 17-13, 17-13A, 17-14, 17-15, and 17-16 of Orleans Parish; St. Charles Parish;  
27 and St. John the Baptist Parish.

1        §101.3. Assignment of districts; vacancies, elections; redistricting

2                A. Each justice of the supreme court in office on January 1, 2023, shall be  
3        the justice for the district having the same designation as the district from which the  
4        justice was elected and shall complete the term for which he was elected.

5                B. The successor to the office of justice of the supreme court shall be elected  
6        from the district assigned to that office as provided by Subsection A of this Section.

7        The election shall be from the district composed as provided by R.S. 13:101.2.

8        Section 2. R.S. 13:101, 101.1, and 312.4 are hereby repealed.

9        Section 3.(A) The precincts referenced in this Act are those precincts identified as  
10       Voting Districts (VTDs) in the 2020 Census Redistricting TIGER/Line Shapefiles for the  
11       State of Louisiana as validated through the data verification program of the Louisiana House  
12       of Representatives and the Louisiana Senate and available on the legislature's website on the  
13       effective date of this Section.

14                (B) When a precinct referenced in this Act has been subdivided by action of the  
15       parish governing authority on a nongeographic basis or subdivided by action of the parish  
16       governing authority on a geographic basis in accordance with the provisions of R.S.  
17       18:532.1, the enumeration in this Act of the general precinct designation shall include all  
18       nongeographic and all geographic subdivisions thereof, however such subdivisions may be  
19       designated.

20                (C) The territorial limits of the districts as provided in this Act shall continue in  
21       effect until changed by law regardless of any subsequent change made to the precincts by  
22       the parish governing authority.

23        Section 4. This Act shall become effective on January 1, 2023.

## DIGEST

The digest printed below was prepared by House Legislative Services. It constitutes no part of the legislative instrument. The keyword, one-liner, abstract, and digest do not constitute part of the law or proof or indicia of legislative intent. [R.S. 1:13(B) and 24:177(E)]

HB 22 Engrossed

2022 First Extraordinary Session

Ivey

**Abstract:** Provides for the redistricting of the state's supreme court and provides for the composition of seven supreme court districts.

Statistical summaries of proposed law including maps illustrating proposed district boundaries accompany this digest. (*Attached to the bill version on the internet.*)

Present constitution (Const. Art. V, §3) provides the supreme court must be composed of a chief justice and six associate justices.

Present constitution (Const. Art. V, §4) provides the state must be divided into at least six supreme court districts, and at least one judge shall be elected from each. Further provides the districts and the number of judges assigned to each on the effective date of this constitution are retained, subject to change by law enacted by two-thirds of the elected members of each house of the legislature.

Proposed law redraws district boundaries for the seven supreme court districts.

Proposed law repeals present law that provides for an additional judgeship for the Court of Appeal for the Fourth Circuit who is assigned to the La. Supreme Court.

Proposed law specifies that precincts referenced in district descriptions are those precincts identified as Voting Districts (VTDs) in the 2020 Census Redistricting TIGER/Line Shapefiles for the state of La. as validated through the data verification program of the La. legislature. Also specifies that if any such precinct has been subdivided by action of the parish governing authority on a nongeographic basis or subdivided by action of the parish governing authority on a geographic basis in accordance with present law, the enumeration of the general precinct designation shall include all nongeographic and all geographic subdivisions thereof. Further provides that the territorial limits of the districts as enacted shall continue in effect until changed by law regardless of any subsequent change made to the precincts by the parish governing authority.

Population data in the summaries accompanying this digest are derived from 2020 Census Redistricting Data (Public Law 94-171), Summary File for Louisiana. Population data, statistical information, and maps are supplied for purposes of information and analysis and comprise no part of proposed law.

Effective Jan. 1, 2023.

(Adds R.S. 13:101.2 and 101.3; Repeals R.S. 13:101, 101.1, and 312.4)

Summary of Amendments Adopted by House

The Committee Amendments Proposed by House Committee on House and Governmental Affairs to the original bill:

1. Make changes to districts 1 through 7.
2. Make proposed law effective Jan. 1, 2023, for all purposes.

# Plan Statistics

Plan: HB 22 Engrossed (Ivey) 221ES-105

<u>Districts:</u>	<u># of Members</u>	<u>Actual Population</u>	<u>Ideal Population</u>	<u>Absolute Deviation</u>	<u>Relative Deviation</u>
District 1	1	640,806	665,393	-24,587	-3.695%
District 2	1	696,500	665,393	31,107	4.675%
District 3	1	670,639	665,393	5,246	0.788%
District 4	1	685,992	665,393	20,599	3.096%
District 5	1	655,259	665,393	-10,134	-1.523%
District 6	1	652,251	665,393	-13,142	-1.975%
District 7	1	656,310	665,393	-9,083	-1.365%
<b>Grand Total:</b>	<b>7</b>	<b>4,657,757</b>	<b>4,657,751</b>		

Ideal Population Per Member:	665393		
Number of Districts for Plan Type:	7		
Range of District Populations:	640,806	to	696,500
Absolute Mean Deviation:	7,956		
Absolute Range:	-24,587	to	31,107
Absolute Overall Range:	55,694		
Relative Mean Deviation:	2.45%		
Relative Range:	-3.70%	to	4.67%
Relative Overall Range:	8.37%		

<b><i>Ideal - Actual:</i></b>	<b>-6</b>
<b><i>Remainder:</i></b>	<b>6</b>
<b><i>Unassigned Population:</i></b>	<b>0</b>

# Total Population

Plan: HB 22 Engrossed (Ivey) 221ES-105

	Total Population	Total White	Total Black	Total Asian	Total American Indian	Total Other	Total Hispanic	VAP Total	VAP White	VAP Black	VAP Asian	VAP American Indian	VAP Other	VAP Hispanic Total
District 1	640,806	438,437	102,555	21,268	12,545	66,001	81,025	496,701	352,221	72,321	15,590	9,323	47,246	56,800
	100.000%	68.420%	16.004%	3.319%	1.958%	10.300%	12.644%	100.000%	70.912%	14.560%	3.139%	1.877%	9.512%	11.435%
District 2	696,500	260,377	394,827	11,208	8,308	21,780	26,385	536,138	217,000	288,369	8,717	6,429	15,623	18,669
	100.000%	37.384%	56.687%	1.609%	1.193%	3.127%	3.788%	100.000%	40.475%	53.786%	1.626%	1.199%	2.914%	3.482%
District 3	670,639	458,246	159,297	13,702	10,488	28,906	35,399	506,392	357,107	111,840	9,818	7,670	19,957	24,123
	100.000%	68.330%	23.753%	2.043%	1.564%	4.310%	5.278%	100.000%	70.520%	22.086%	1.939%	1.515%	3.941%	4.764%
District 4	685,992	445,499	183,268	11,311	17,815	28,099	34,265	523,782	350,327	131,492	8,322	13,423	20,218	23,885
	100.000%	64.942%	26.716%	1.649%	2.597%	4.096%	4.995%	100.000%	66.884%	25.104%	1.589%	2.563%	3.860%	4.560%
District 5	655,259	436,460	150,998	17,010	11,021	39,770	45,821	498,434	344,384	106,271	12,364	8,256	27,159	30,486
	100.000%	66.609%	23.044%	2.596%	1.682%	6.069%	6.993%	100.000%	69.093%	21.321%	2.481%	1.656%	5.449%	6.116%
District 6	652,251	396,878	200,605	8,249	18,646	27,873	32,673	496,620	315,318	142,933	5,995	12,752	19,622	22,296
	100.000%	60.847%	30.756%	1.265%	2.859%	4.273%	5.009%	100.000%	63.493%	28.781%	1.207%	2.568%	3.951%	4.490%
District 7	656,310	221,755	351,569	24,540	8,237	50,209	66,981	512,481	188,154	262,543	19,610	6,387	35,787	47,403
	100.000%	33.788%	53.568%	3.739%	1.255%	7.650%	10.206%	100.000%	36.714%	51.230%	3.826%	1.246%	6.983%	9.250%
Grand Total	4,657,757	2,657,652	1,543,119	107,288	87,060	262,638	322,549	3,570,548	2,124,511	1,115,769	80,416	64,240	185,612	223,662
	100.000%	57.059%	33.130%	2.303%	1.869%	5.639%	6.925%	100.000%	59.501%	31.249%	2.252%	1.799%	5.198%	6.264%



# Voter Registration

Plan: HB 22 Engrossed (Ivey) 221ES-105

	Reg Total Dec 2021	Reg White Dec 2021	Reg Black Dec 2021	Reg Other Dec 2021	Reg Dem Total Dec 2021	Reg Rep Total Dec 2021	Reg Other Total Dec 2021
District 1	409,681	321,697	51,650	36,334	114,640	172,761	122,280
	82.480%	78.524%	12.607%	8.869%	27.983%	42.170%	29.848%
District 2	428,875	172,280	240,345	16,250	228,423	99,484	100,968
	79.993%	40.170%	56.041%	3.789%	53.261%	23.197%	23.543%
District 3	407,748	304,573	85,271	17,904	136,296	158,963	112,489
	80.520%	74.696%	20.913%	4.391%	33.427%	38.986%	27.588%
District 4	414,362	297,491	99,746	17,125	133,197	176,199	104,966
	79.110%	71.795%	24.072%	4.133%	32.145%	42.523%	25.332%
District 5	404,193	302,879	80,189	21,125	125,679	167,058	111,456
	81.093%	74.934%	19.839%	5.226%	31.094%	41.331%	27.575%
District 6	409,998	272,331	122,190	15,477	173,274	135,430	101,294
	82.558%	66.423%	29.803%	3.775%	42.262%	33.032%	24.706%
District 7	419,489	156,738	223,357	39,394	249,495	58,885	111,109
	81.855%	37.364%	53.245%	9.391%	59.476%	14.037%	26.487%
Grand Total	2,894,346	1,827,989	902,748	163,609	1,161,004	968,780	764,562

# Splits

## Plan: HB 22 Engrossed (Ivey) 221ES-105

	Total Population	Total White	Total Black	Total Asian	Total American Indian	Total Other	VAP Total	VAP White	VAP Black	VAP Asian	VAP American Indian	VAP Other	Reg Total Dec 2021	Reg White Dec 2021	Reg Black Dec 2021	Reg Other Dec 2021
District 1																
*Jefferson	236,507	151,183	31,178	11,529	4,170	38,447	189,251	126,561	22,883	8,705	3,151	27,951	144,652	112,830	12,959	18,863
*Orleans	26,987	21,886	1,563	1,051	335	2,152	21,162	17,448	1,144	749	262	1,559	19,102	16,562	816	1,724
Plaquemines	23,515	14,287	5,428	1,317	697	1,786	17,334	10,856	3,857	925	500	1,196	13,908	9,513	3,134	1,261
St. Bernard	43,764	24,497	12,309	1,381	947	4,630	31,775	18,992	7,944	982	688	3,169	25,653	18,233	5,497	1,923
St. Tammany	264,570	196,641	38,643	5,774	5,660	17,852	202,228	154,621	26,761	4,075	4,161	12,610	178,779	145,724	21,142	11,913
Washington	45,463	29,943	13,434	216	736	1,134	34,951	23,743	9,732	154	561	761	27,587	18,835	8,102	650
District 1	640,806	438,437	102,555	21,268	12,545	66,001	496,701	352,221	72,321	15,590	9,323	47,246	409,681	321,697	51,650	36,334
	100.000%	68.420%	16.004%	3.319%	1.958%	10.300%	100.000%	70.912%	14.560%	3.139%	1.877%	9.512%	82.480%	78.524%	12.607%	8.869%
District 2																
*Bossier	7,170	4,567	2,297	32	147	127	5,864	3,718	1,931	12	112	91	4,141	2,865	1,158	118
Caddo	237,848	103,457	119,304	4,034	3,840	7,213	182,407	85,059	86,359	3,008	2,958	5,023	151,296	73,113	71,249	6,934
Claiborne	14,170	7,263	6,360	88	185	274	11,507	6,258	4,824	55	140	230	8,598	4,632	3,820	146
Concordia	18,687	10,275	7,725	122	233	332	14,217	8,108	5,613	100	167	229	11,964	7,222	4,540	202
*East Baton Rouge	214,381	43,468	155,184	4,925	1,409	9,395	164,230	38,075	114,382	3,976	1,128	6,669	124,133	24,755	93,815	5,563
East Carroll	7,459	2,054	5,272	29	43	61	5,901	1,773	4,043	19	27	39	4,709	1,306	3,359	44
East Feliciana	19,539	11,516	7,341	91	262	329	16,183	9,740	5,918	61	198	266	13,600	7,959	5,186	455
Madison	10,017	3,475	6,363	20	59	100	7,435	2,906	4,391	9	48	81	7,278	2,494	4,674	110
Morehouse	25,629	12,281	12,484	160	370	334	20,062	10,095	9,300	117	279	271	16,922	8,505	8,131	286
*Ouachita	70,195	15,957	50,285	1,345	573	2,035	51,954	13,907	34,901	1,106	429	1,611	41,699	9,828	30,299	1,572
Tensas	4,147	1,744	2,312	23	26	42	3,235	1,446	1,728	12	23	26	3,455	1,503	1,917	35
*Union	5,230	2,808	2,056	15	69	282	4,075	2,265	1,554	12	52	192	3,898	2,155	1,638	105
Webster	36,967	22,735	12,679	208	687	658	28,753	18,144	9,464	154	558	433	22,737	14,938	7,339	460
West Carroll	9,751	7,894	1,425	27	180	225	7,532	6,223	1,010	20	136	143	7,038	5,913	1,040	85
West Feliciana	15,310	10,883	3,740	89	225	373	12,783	9,283	2,951	56	174	319	7,407	5,092	2,180	135
District 2	696,500	260,377	394,827	11,208	8,308	21,780	536,138	217,000	288,369	8,717	6,429	15,623	428,875	172,280	240,345	16,250
	100.000%	37.384%	56.687%	1.609%	1.193%	3.127%	100.000%	40.475%	53.786%	1.626%	1.199%	2.914%	79.993%	40.170%	56.041%	3.789%
District 3																
Acadia	57,576	44,480	10,864	238	573	1,421	42,943	34,071	7,383	173	400	916	37,678	30,555	6,407	716
Allen	22,750	16,327	4,490	246	947	740	17,510	12,751	3,275	182	646	656	12,201	9,478	2,217	506
Beauregard	36,549	29,529	4,649	402	1,052	917	27,489	22,304	3,495	269	773	648	22,294	18,771	2,369	1,154
Calcasieu	216,785	139,772	59,386	4,702	3,536	9,389	163,166	108,789	41,898	3,359	2,604	6,516	120,511	85,659	29,513	5,339
Cameron	5,617	5,232	125	30	75	155	4,358	4,100	79	23	47	109	4,789	4,610	88	91
Jefferson Davis	32,250	25,066	5,837	183	472	692	24,039	19,121	4,006	111	325	476	20,013	16,350	3,202	461
Lafayette	241,753	153,363	65,136	6,454	3,210	13,590	183,875	121,608	45,917	4,664	2,387	9,299	153,493	108,645	36,481	8,367
Vermilion	57,359	44,477	8,810	1,447	623	2,002	43,012	34,363	5,787	1,037	488	1,337	36,769	30,505	4,994	1,270

# Splits

Plan: HB 22 Engrossed (Ivey) 221ES-105

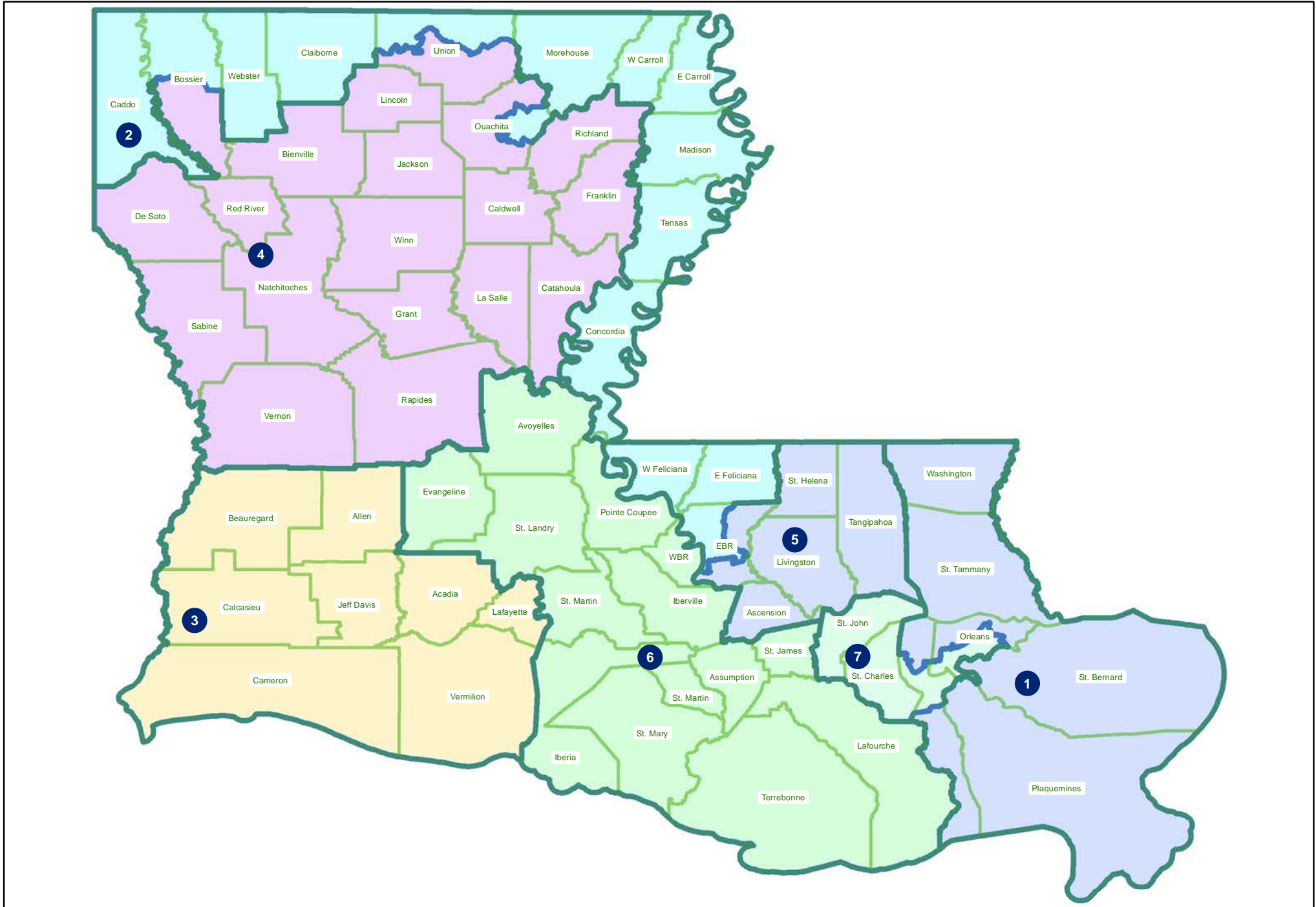
	Total Population	Total White	Total Black	Total Asian	Total American Indian	Total Other	VAP Total	VAP White	VAP Black	VAP Asian	VAP American Indian	VAP Other	Reg Total Dec 2021	Reg White Dec 2021	Reg Black Dec 2021	Reg Other Dec 2021
District 3	670,639	458,246	159,297	13,702	10,488	28,906	506,392	357,107	111,840	9,818	7,670	19,957	407,748	304,573	85,271	17,904
	100.000%	68.330%	23.753%	2.043%	1.564%	4.310%	100.000%	70.520%	22.086%	1.939%	1.515%	3.941%	80.520%	74.696%	20.913%	4.391%
District 4																
Bienville	12,981	6,950	5,600	57	207	167	10,073	5,486	4,284	30	162	111	8,847	4,843	3,917	87
*Bossier	121,576	76,485	30,254	3,460	3,126	8,251	90,012	59,213	20,509	2,436	2,365	5,489	65,602	47,996	13,680	3,926
Caldwell	9,645	7,646	1,632	51	150	166	7,478	5,969	1,224	46	116	123	6,031	5,124	818	89
Catahoula	8,906	5,776	2,395	46	119	570	6,951	4,557	1,736	33	87	538	6,467	4,639	1,770	58
De Soto	26,812	15,284	9,973	117	740	698	20,440	11,909	7,425	86	557	463	18,713	11,330	6,810	573
Franklin	19,774	12,492	6,802	70	205	205	15,028	9,901	4,779	44	153	151	13,159	9,015	4,034	110
Grant	22,169	17,709	3,335	133	644	348	17,527	13,964	2,717	97	507	242	12,688	11,174	1,176	338
Jackson	15,031	9,967	4,166	175	255	468	11,783	7,967	3,125	140	174	377	9,449	6,647	2,610	192
La Salle	14,791	11,348	1,422	283	372	1,366	11,563	8,636	1,065	264	271	1,327	8,792	7,978	637	177
Lincoln	48,396	26,034	19,364	892	662	1,444	38,655	21,306	15,119	744	526	960	25,649	15,672	9,016	961
Natchitoches	37,515	19,361	15,725	255	861	1,313	29,349	16,010	11,415	198	683	1,043	23,107	12,850	9,224	1,033
*Ouachita	90,173	72,588	10,932	1,443	2,088	3,122	68,246	56,067	7,389	1,012	1,630	2,148	58,053	50,687	5,359	2,007
Rapides	130,023	77,510	42,592	2,428	3,102	4,391	98,792	61,373	30,205	1,786	2,334	3,094	80,176	52,832	23,775	3,569
Red River	7,620	4,195	3,106	25	171	123	5,714	3,338	2,164	3	116	93	5,631	3,130	2,418	83
Richland	20,043	11,785	7,603	83	258	314	15,383	9,338	5,546	66	203	230	13,662	8,470	4,961	231
Sabine	22,155	15,036	3,861	94	2,723	441	17,064	12,054	2,655	66	1,970	319	14,547	11,023	2,184	1,340
*Union	15,877	11,652	3,168	47	269	741	12,557	9,542	2,307	27	202	479	11,323	8,911	2,054	358
Vernon	48,750	35,087	7,611	1,442	1,600	3,010	36,261	26,765	5,133	1,074	1,160	2,129	24,060	19,182	3,011	1,867
Winn	13,755	8,594	3,727	210	263	961	10,906	6,932	2,695	170	207	902	8,406	5,988	2,292	126
District 4	685,992	445,499	183,268	11,311	17,815	28,099	523,782	350,327	131,492	8,322	13,423	20,218	414,362	297,491	99,746	17,125
	100.000%	64.942%	26.716%	1.649%	2.597%	4.096%	100.000%	66.884%	25.104%	1.589%	2.563%	3.860%	79.110%	71.795%	24.072%	4.133%
District 5																
Ascension	126,500	81,141	32,216	2,300	2,004	8,839	91,957	61,136	22,139	1,514	1,390	5,778	79,917	56,800	18,814	4,303
*East Baton Rouge	242,400	152,601	58,214	11,500	3,318	16,767	191,382	125,806	42,408	8,623	2,619	11,926	155,131	113,477	30,860	10,794
Livingston	142,282	116,855	12,658	1,697	3,111	7,961	105,141	88,432	8,136	1,099	2,311	5,163	84,568	76,062	5,425	3,081
St. Helena	10,920	4,527	6,031	39	134	189	8,463	3,805	4,371	28	109	150	8,321	3,628	4,565	128
Tangipahoa	133,157	81,336	41,879	1,474	2,454	6,014	101,491	65,205	29,217	1,100	1,827	4,142	76,256	52,912	20,525	2,819
District 5	655,259	436,460	150,998	17,010	11,021	39,770	498,434	344,384	106,271	12,364	8,256	27,159	404,193	302,879	80,189	21,125
	100.000%	66.609%	23.044%	2.596%	1.682%	6.069%	100.000%	69.093%	21.321%	2.481%	1.656%	5.449%	81.093%	74.934%	19.839%	5.226%
District 6																
Assumption	21,039	13,722	6,220	96	258	743	16,616	11,145	4,707	57	197	510	14,439	9,700	4,510	229
Avoyelles	39,693	25,625	11,678	434	767	1,189	30,578	20,269	8,311	379	570	1,049	23,426	16,534	6,294	598
Evangeline	32,350	21,354	9,235	241	280	1,240	24,408	16,460	6,483	187	217	1,061	20,553	14,566	5,643	344
Iberia	69,929	39,206	24,556	2,123	794	3,250	52,791	31,295	17,069	1,562	581	2,284	44,526	28,287	14,352	1,887

# Splits

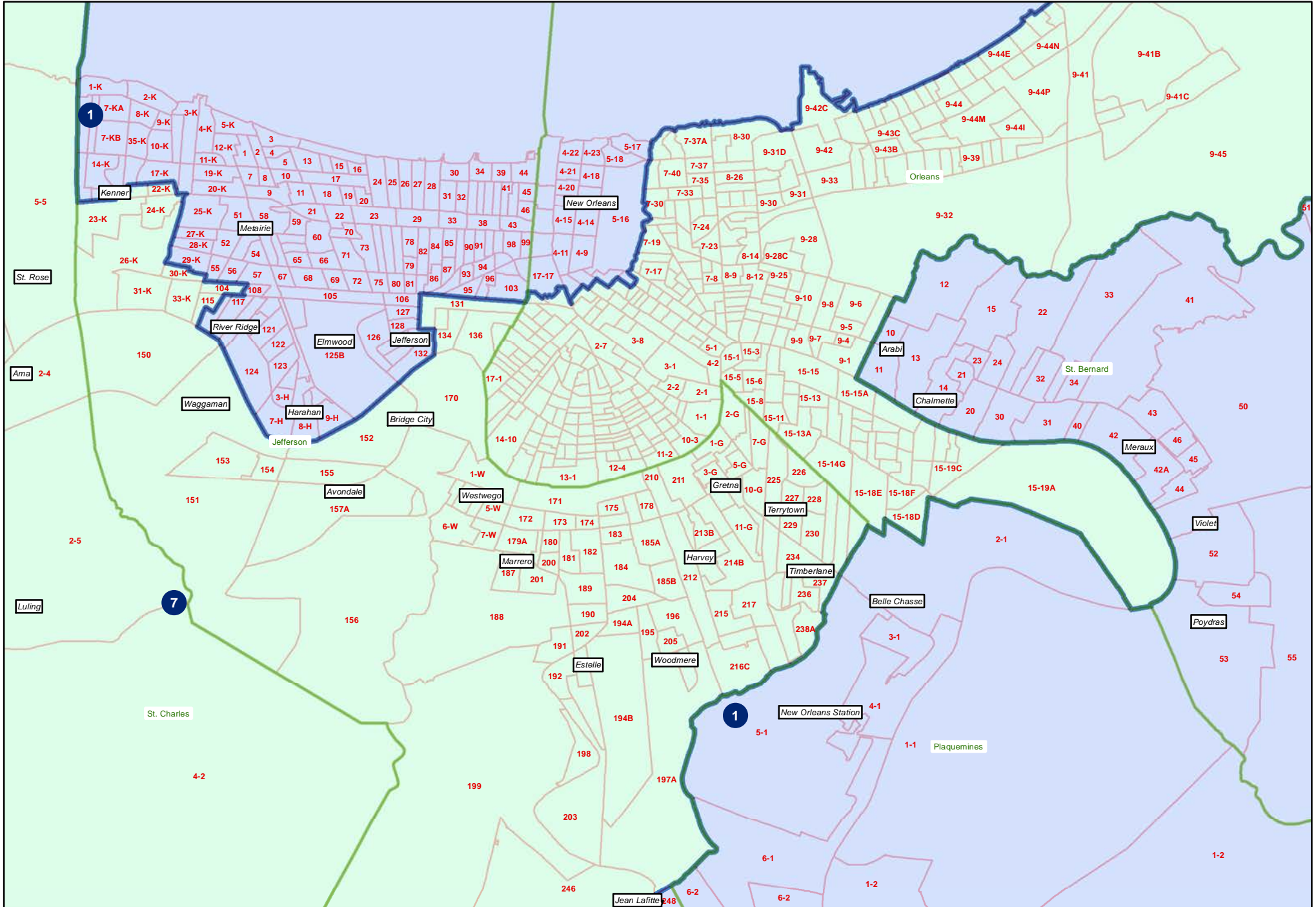
Plan: HB 22 Engrossed (Ivey) 221ES-105

	Total Population	Total White	Total Black	Total Asian	Total American Indian	Total Other	VAP Total	VAP White	VAP Black	VAP Asian	VAP American Indian	VAP Other	Reg Total Dec 2021	Reg White Dec 2021	Reg Black Dec 2021	Reg Other Dec 2021
District 6																
Iberville	30,241	14,833	13,730	202	274	1,202	24,086	12,462	10,232	149	221	1,022	20,462	10,132	9,897	433
Lafourche	97,557	71,710	15,855	1,025	4,224	4,743	74,619	56,838	11,077	738	2,777	3,189	58,278	48,467	7,164	2,647
Pointe Coupee	20,758	12,395	7,504	107	159	593	16,250	10,108	5,502	91	119	430	14,675	9,320	5,121	234
St. James	20,192	9,973	9,762	60	82	315	15,505	7,883	7,297	31	64	230	14,966	7,254	7,501	211
St. Landry	82,540	43,611	35,836	499	636	1,958	61,811	34,209	25,497	353	451	1,301	54,482	30,093	23,005	1,384
St. Martin	51,767	33,259	15,921	597	539	1,451	39,404	26,278	11,293	407	413	1,013	35,120	23,934	10,381	805
St. Mary	49,406	26,949	15,991	835	1,670	3,961	37,521	21,594	11,520	593	1,173	2,641	30,210	18,712	9,891	1,607
Terrebonne	109,580	69,934	23,147	1,743	8,637	6,119	82,505	55,631	15,796	1,239	5,750	4,089	61,720	45,395	11,566	4,759
West Baton Rouge	27,199	14,307	11,170	287	326	1,109	20,526	11,146	8,149	209	219	803	17,141	9,937	6,865	339
District 6	652,251	396,878	200,605	8,249	18,646	27,873	496,620	315,318	142,933	5,995	12,752	19,622	409,998	272,331	122,190	15,477
	100.000%	60.847%	30.756%	1.265%	2.859%	4.273%	100.000%	63.493%	28.781%	1.207%	2.568%	3.951%	82.558%	66.423%	29.803%	3.775%
District 7																
*Jefferson	204,274	69,752	95,039	11,495	3,516	24,472	155,403	57,574	69,292	8,987	2,684	16,866	118,449	46,786	56,617	15,046
*Orleans	357,010	104,576	217,406	11,805	3,331	19,892	285,034	92,804	164,924	9,771	2,686	14,849	237,142	75,424	140,709	21,009
St. Charles	52,549	33,550	13,928	837	925	3,309	39,541	26,154	9,890	529	667	2,301	34,985	24,309	8,797	1,879
St. John the Baptist	42,477	13,877	25,196	403	465	2,536	32,503	11,622	18,437	323	350	1,771	28,913	10,219	17,234	1,460
District 7	656,310	221,755	351,569	24,540	8,237	50,209	512,481	188,154	262,543	19,610	6,387	35,787	419,489	156,738	223,357	39,394
	100.000%	33.788%	53.568%	3.739%	1.255%	7.650%	100.000%	36.714%	51.230%	3.826%	1.246%	6.983%	81.855%	37.364%	53.245%	9.391%

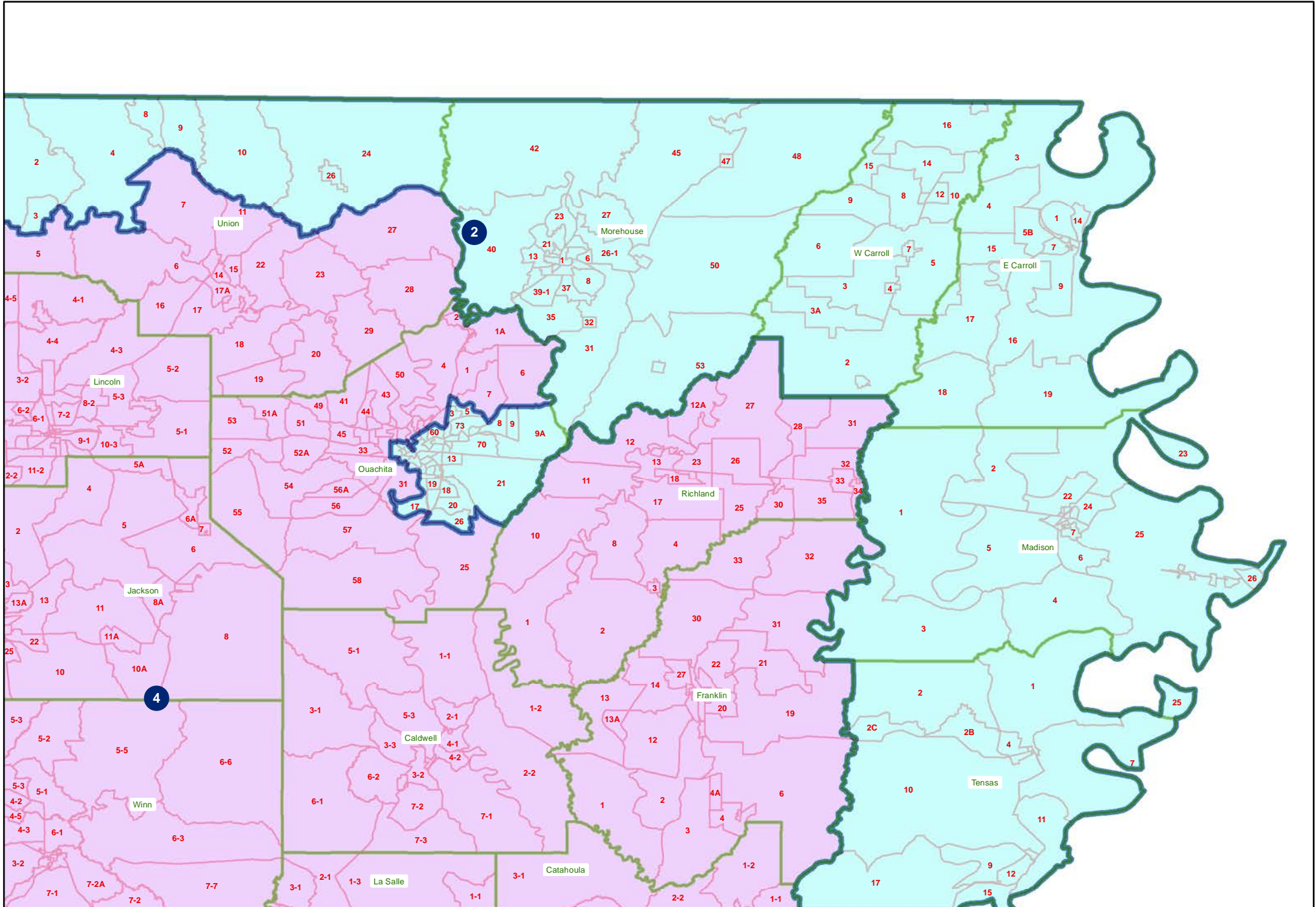
HB 22 Engrossed (Ivey) 221ES-105  
Statewide



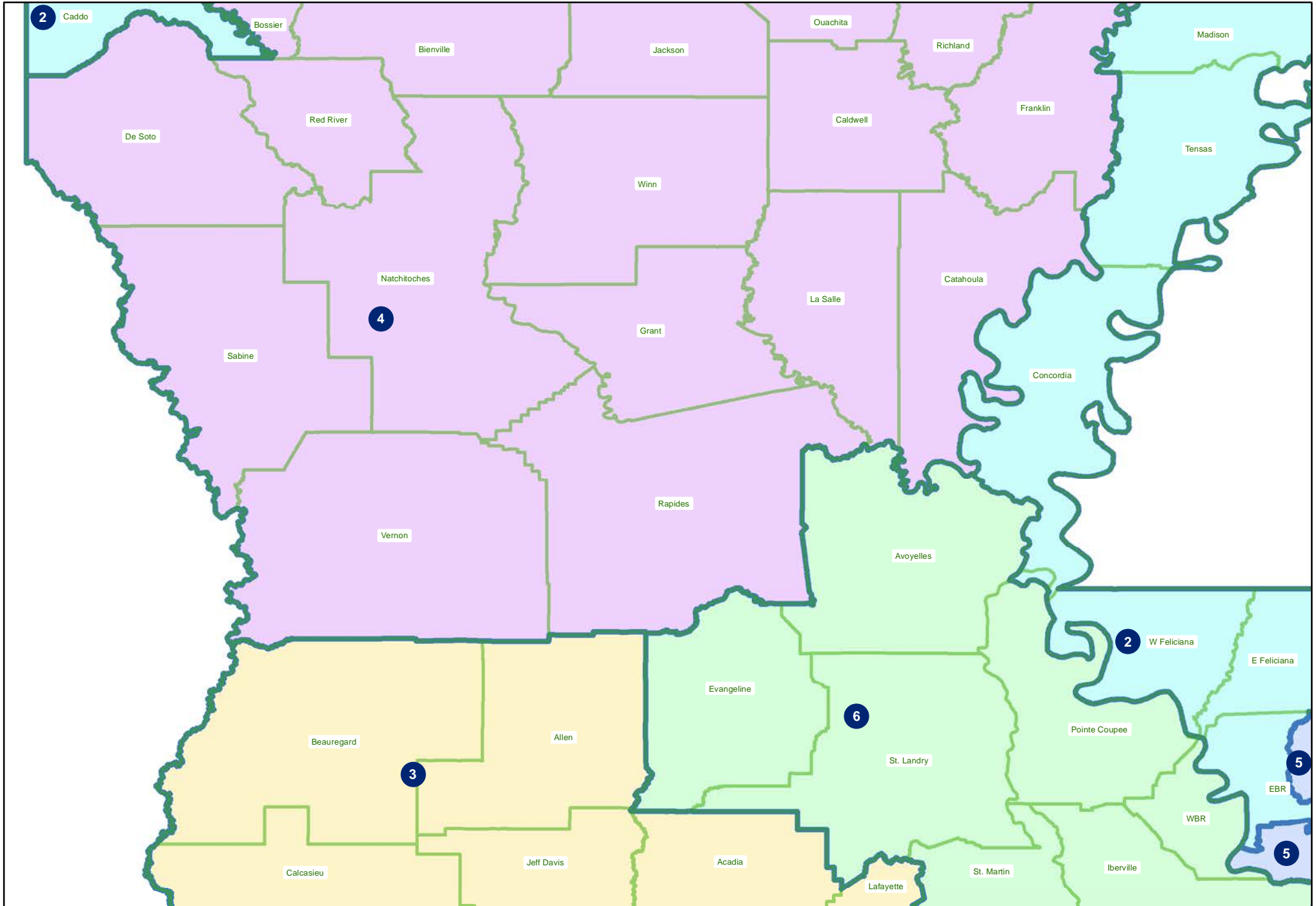
HB 22 Engrossed (Ivey) 221ES-105  
Orleans and Jefferson



HB 22 Engrossed (Ivey) 221ES-105  
Northeast

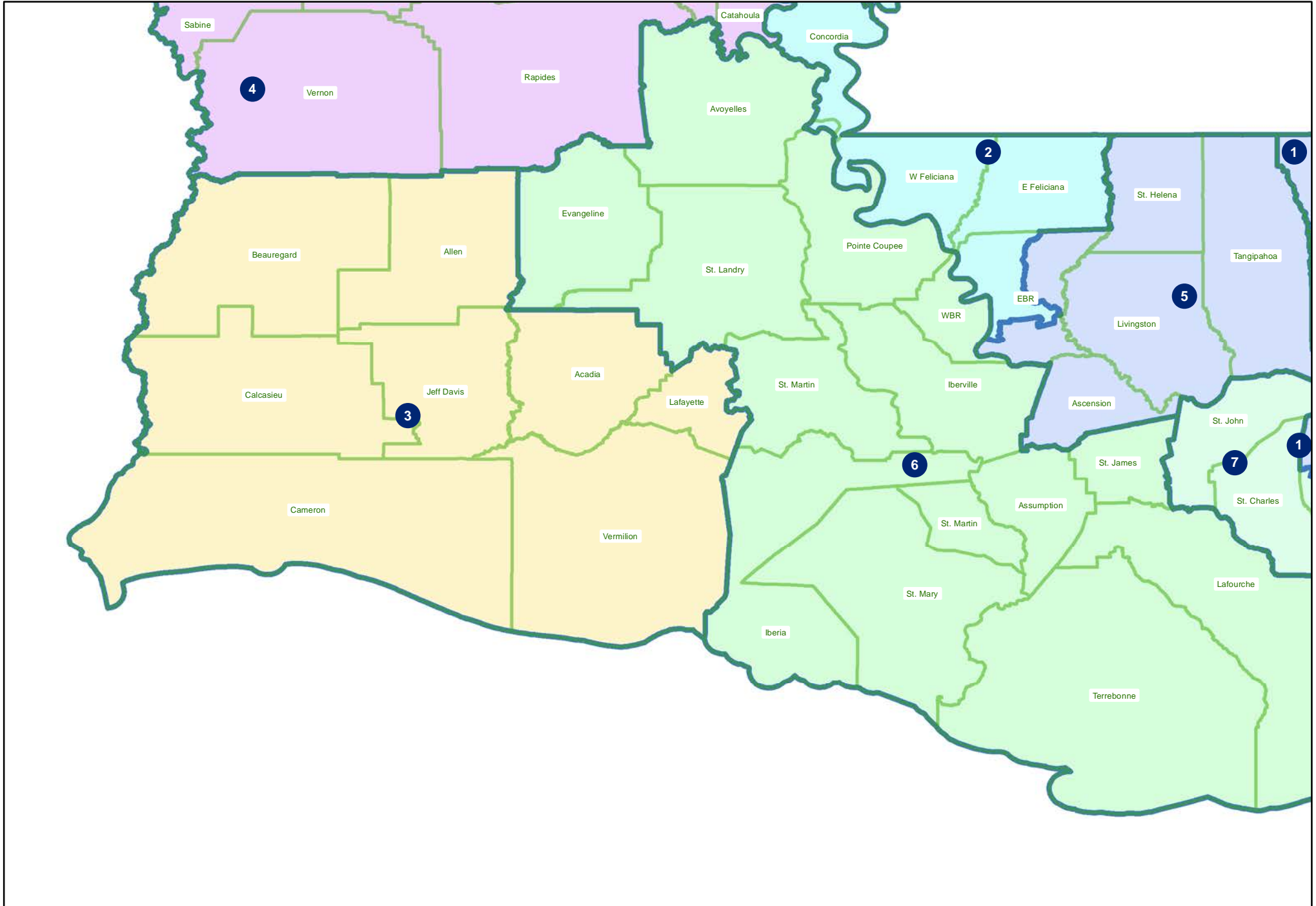


HB 22 Engrossed (Ivey) 221ES-105  
Central

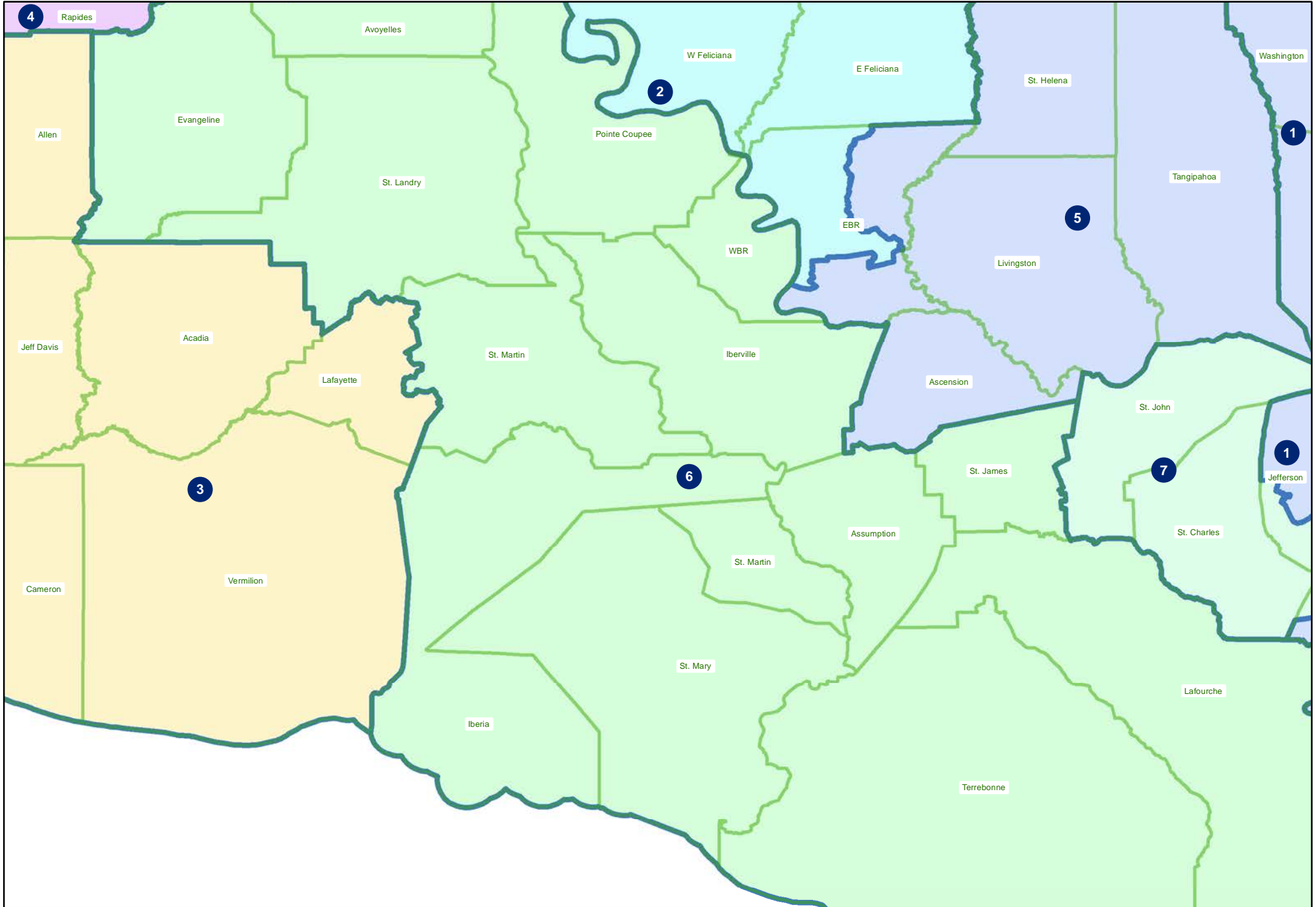




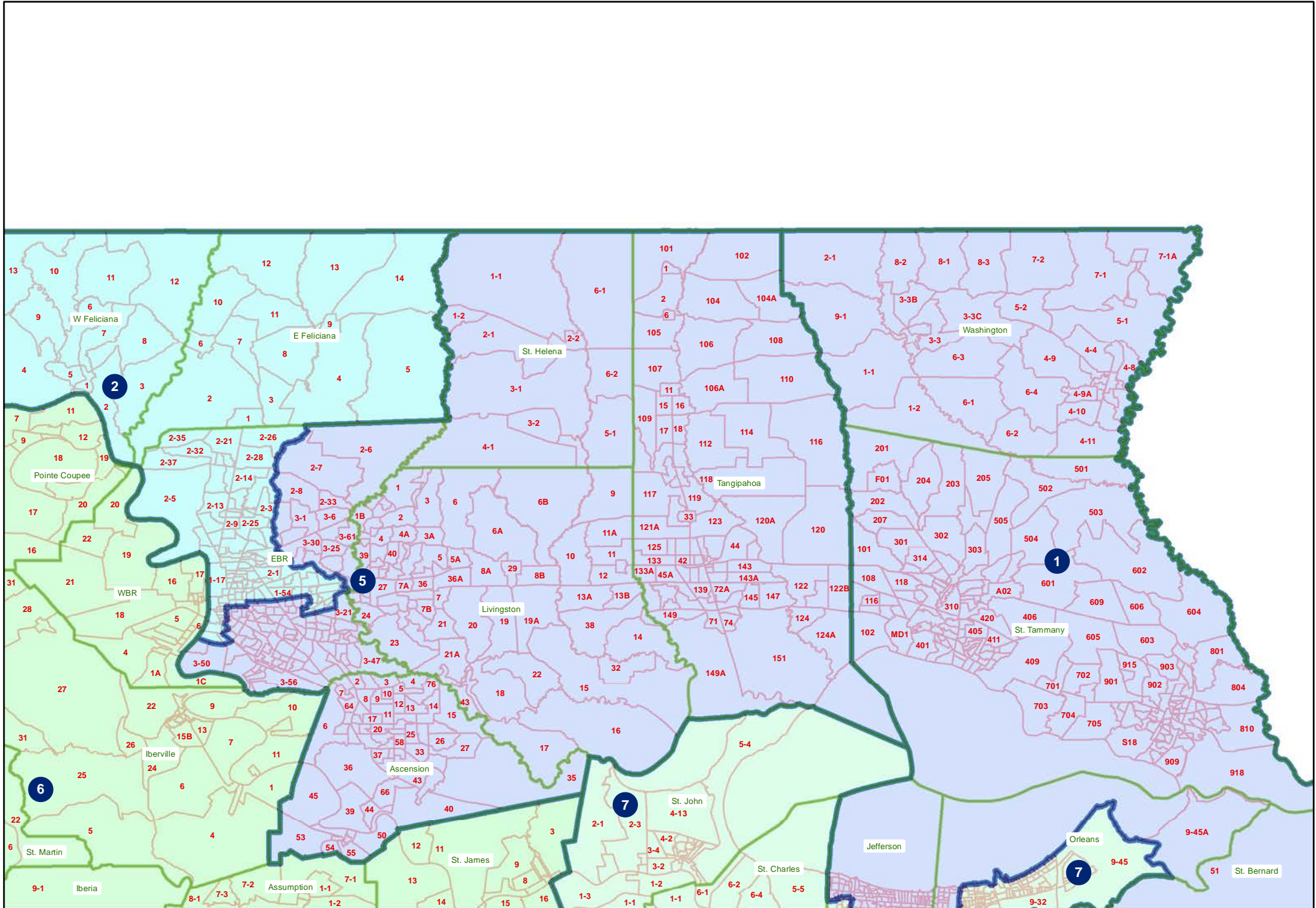
HB 22 Engrossed (Ivey) 221ES-105  
Southwest



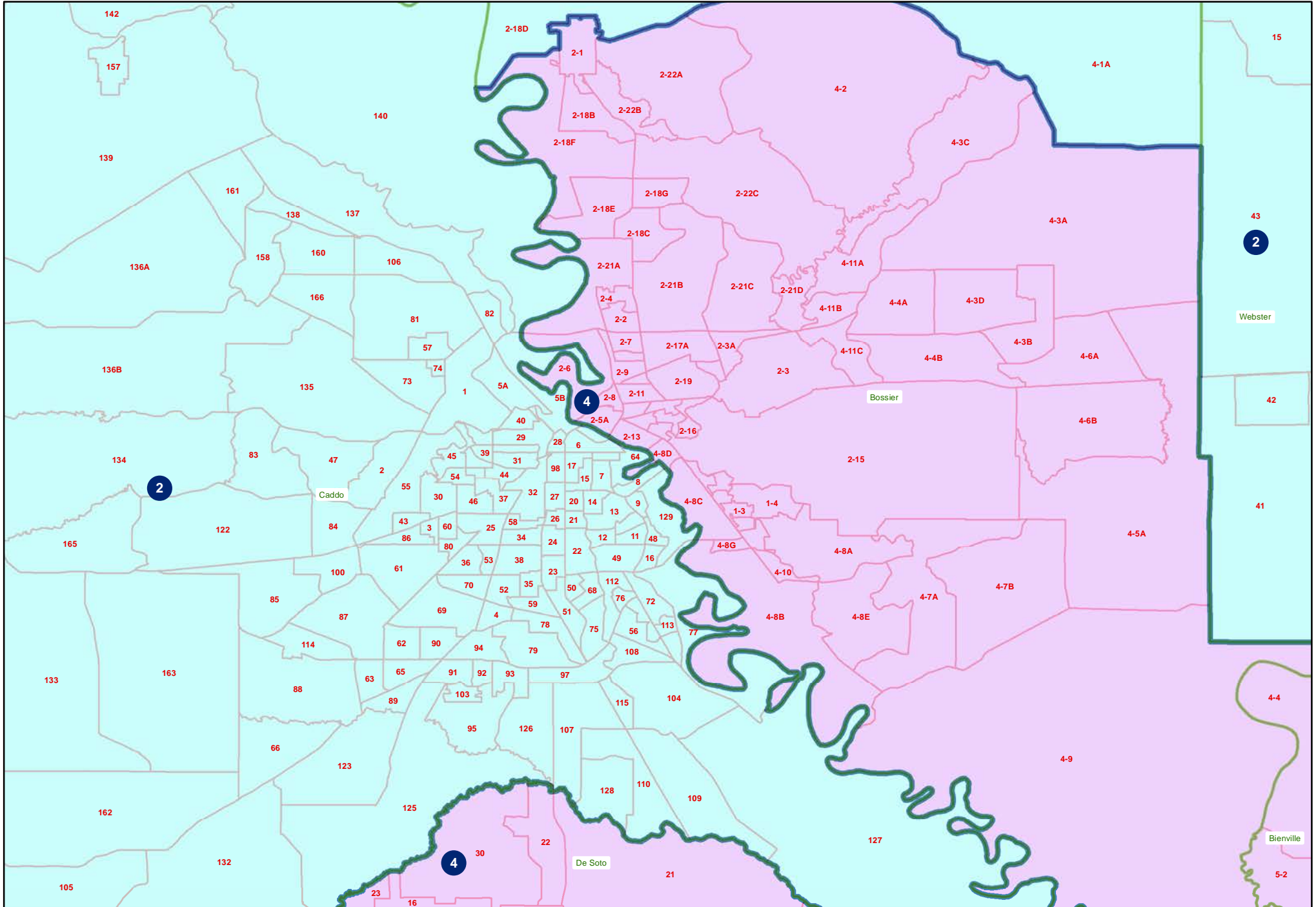
HB 22 Engrossed (Ivey) 221ES-105  
Acadiana



HB 22 Engrossed (Ivey) 221ES-105  
Florida Parishes

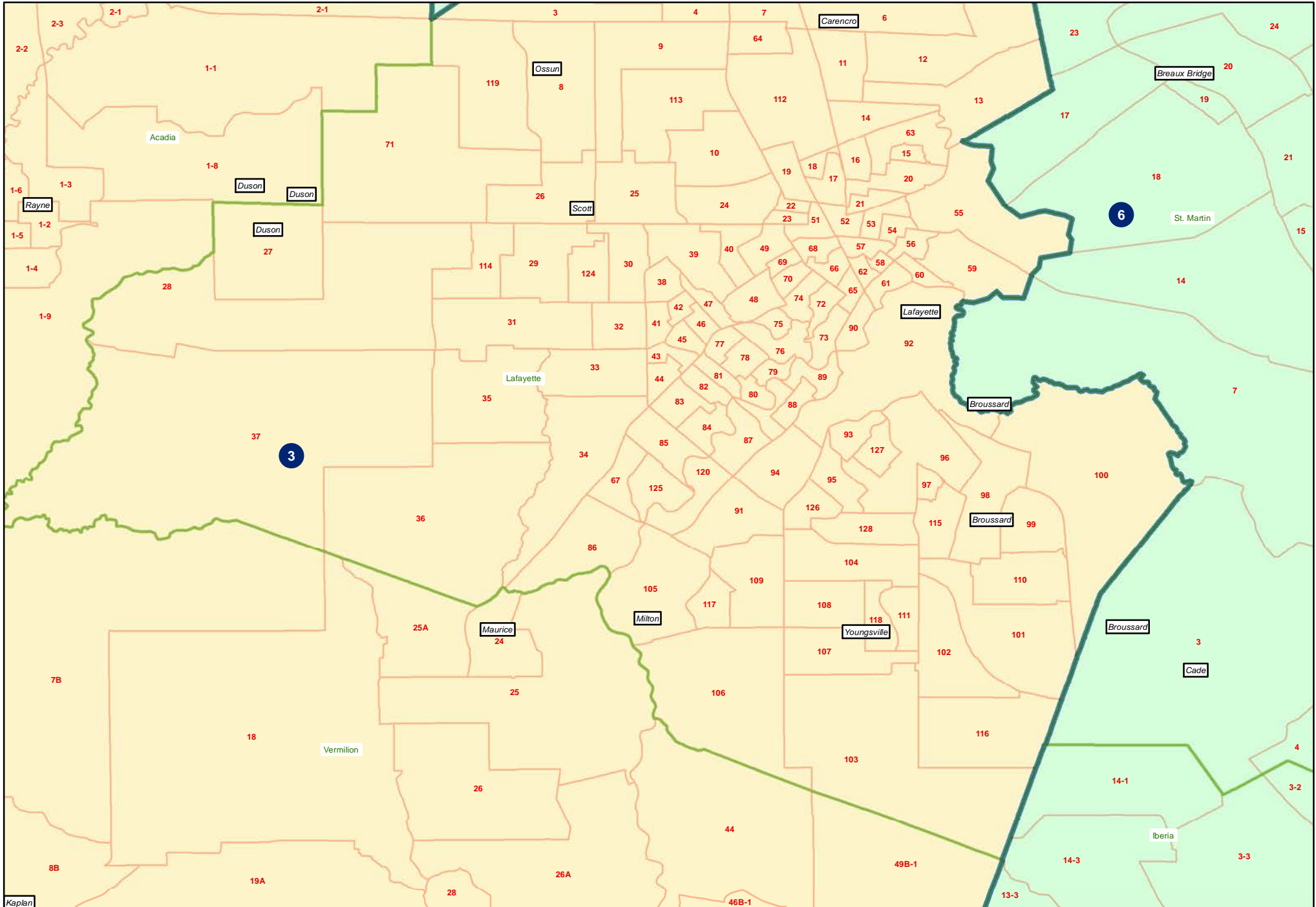


HB 22 Engrossed (Ivey) 221ES-105  
Shreveport



# HB 22 Engrossed (Ivey) 221ES-105

## Lafayette



HB 22 Engrossed (Ivey) 221ES-105  
Baton Rouge

