

HOUSE COMMITTEE AMENDMENTS

2022 First Extraordinary Session

Amendments proposed by House Committee on House and Governmental Affairs to Engrossed Senate Bill No. 14 by Senator Cortez

AMENDMENT NO. 1

On page 1, delete lines 13 through 17 and delete page 2 and on page 3, delete lines 1 through 25 and insert the following:

"(1) District 1 is composed of Precincts 1, 2, 3, 4, 5, 7, 8, 9, 10, 11, 12, 13, 14, 15, 16, 17, 18, 19, 20, 21, 22, 23, 24, 25, 26, 27, 28, 29, 30, 31, 32, 33, 34, 35, 36, 37, 38, 39, 40, 41, 42, 43, 44, 45, 46, 51, 52, 53, 54, 55, 56, 58, 59, 60, 61, 62, 63, 64, 65, 66, 67, 68, 69, 70, 71, 72, 73, 74, 75, 76, 77, 78, 79, 80, 81, 82, 83, 84, 85, 86, 87, 88, 89, 90, 91, 92, 93, 94, 95, 96, 97, 98, 99, 100, 101, 102, 103, 105, 106, 116, 117, 118, 119, 120, 121, 122, 123, 124, 125A, 125B, 126, 127, 128, 129, 130, 132, 134, 136, 138, 170, 171, 172, 175, 176, 177, 178, 179A, 182, 183, 184, 185A, 189, 190, 204, 1-H, 2-H, 3-H, 4-H, 5-H, 6-H, 7-H, 8-H, 9-H, 1-K, 2-K, 3-K, 4-K, 5-K, 6-KA, 6-KB, 7-KA, 7-KB, 8-K, 9-K, 10-K, 11-K, 12-K, 13-KA, 14-K, 16-K, 17-K, 18-K, 19-K, 20-K, 25-K, 27-K, 28-K, 29-K, 34-K, 35-K, 1-W, 3-W, 4-W, 5-W, 6-W, and 7-W of Jefferson Parish; Precincts 3-20, 4-7, 4-8, 4-9, 4-11, 4-14, 4-15, 4-17, 4-17A, 4-18, 4-20, 4-21, 4-22, 4-23, 5-15, 5-16, 5-17, 5-18, 7-41, 7-42, 13-4, 13-6, 13-7, 13-8, 13-9, 13-10, 14-1, 14-2, 14-3, 14-4, 14-5, 14-6, 14-7, 14-8, 14-9, 14-10, 14-11, 14-12, 14-13A, 14-14, 14-15, 14-16, 14-17, 14-18A, 14-19, 14-20, 14-21, 16-1, 16-1A, 16-2, 17-1, 17-17, 17-18, 17-18A, 17-19, and 17-20 of Orleans Parish; and St. Tammany Parish.

(2) District 2 is composed of Precincts 1-1, 1-2, 2-1, 2-2, 2-5, 4-1, 4-2, 4-3, 5-1, 5-5, 6-1, 6-2, 6-3, and 7-1 of Assumption Parish; Precincts 57, 104, 108, 115, 131, 133, 150, 151, 152, 153, 154, 155, 156, 157A, 157B, 173, 174, 179B, 180, 181, 185B, 187, 188, 191, 194A, 195, 196, 197A, 197B, 200, 201, 202, 205, 210, 211, 212, 213A, 213B, 213C, 214A, 214B, 215, 216A, 216B, 216C, 217, 225, 232A, 232B, 1-G, 2-G, 4-G, 6-G, 7-G, 13-KB, 15-K, 21-K, 22-K, 23-K, 24-K, 26-K, 30-K, 31-K, 33-K, and 2-W of Jefferson Parish; Precincts 1-1, 1-2, 1-5, 1-6, 2-1, 2-2, 2-4, 2-6, 2-7, 3-1, 3-8, 3-9, 3-12, 3-14, 3-15, 3-18, 3-19, 4-2, 4-3, 4-5, 4-6, 5-1, 5-2, 5-3, 5-5, 5-7, 5-8, 5-9, 5-10, 5-11, 5-12, 5-13, 6-1, 6-2, 6-4, 6-6, 6-7, 6-8, 6-9, 7-1, 7-2, 7-4, 7-5, 7-6, 7-7, 7-8, 7-9A, 7-10, 7-11, 7-12, 7-13, 7-14, 7-15, 7-16, 7-17, 7-18, 7-19, 7-20, 7-21, 7-23, 7-24, 7-25, 7-25A, 7-26, 7-27, 7-27B, 7-28, 7-28A, 7-29, 7-30, 7-32, 7-33, 7-35, 7-37, 7-37A, 7-40, 8-1, 8-2, 8-4, 8-6, 8-7, 8-8, 8-9, 8-12, 8-13, 8-14, 8-15, 8-19, 8-20, 8-21, 8-22, 8-23, 8-24, 8-25, 8-26, 8-27, 8-28, 8-30, 9-1, 9-3, 9-4, 9-5, 9-6, 9-7, 9-8, 9-9, 9-10, 9-11, 9-12, 9-13, 9-14, 9-15, 9-16, 9-17, 9-19, 9-21, 9-23, 9-25, 9-26, 9-28, 9-28C, 9-29, 9-30, 9-30A, 9-31, 9-31A, 9-31B, 9-31D, 9-32, 9-33, 9-34A, 9-35, 9-35A, 9-36, 9-36B, 9-37, 9-38, 9-38A, 9-39, 9-39B, 9-40, 9-40A, 9-40C, 9-41, 9-41A, 9-41B, 9-41C, 9-41D, 9-42, 9-42C, 9-43A, 9-43B, 9-43C, 9-43E, 9-43F, 9-43G, 9-43H, 9-43I, 9-43J, 9-43K, 9-43L, 9-43M, 9-43N, 9-44, 9-44A, 9-44B, 9-44D, 9-44E, 9-44F, 9-44G, 9-44I, 9-44J, 9-44L, 9-44M, 9-44N, 9-44O, 9-44P, 9-44Q, 9-45, 9-45A, 10-3, 10-6, 10-7, 10-8, 10-9, 10-11, 10-12, 10-13, 10-14, 11-2, 11-3, 11-4, 11-5, 11-8, 11-9, 11-10, 11-11, 11-12, 11-13, 11-14, 11-17, 12-1, 12-2, 12-3, 12-4, 12-5, 12-6, 12-7, 12-8, 12-9, 12-10, 12-11, 12-12, 12-13, 12-14, 12-16, 12-17, 12-19, 13-1, 13-2, 13-3, 13-5, 13-11, 13-12, 13-13, 13-14, 13-15, 13-16, 14-23, 14-24A, 14-25, 14-26, 15-1, 15-2, 15-3, 15-5, 15-6, 15-8, 15-9, 15-10, 15-11, 15-12, 15-12A, 15-13, 15-13A, 15-13B, 15-14, 15-14A, 15-14B, 15-14C, 15-14D, 15-14E, 15-14F, 15-14G, 15-15, 15-15A, 15-15B, 15-16, 15-17, 15-17A, 15-17B, 15-18, 15-18A, 15-18B, 15-18C, 15-18D, 15-18E, 15-18F, 15-19, 15-19A, 15-19B, 15-19C, 16-3, 16-4, 16-5, 16-6, 16-7, 16-8, 16-9, 17-2, 17-3, 17-4, 17-5, 17-6, 17-7, 17-8, 17-9, 17-10, 17-11, 17-12, 17-13, 17-13A, 17-14, 17-15, and 17-16 of Orleans Parish; St. Charles Parish; St. James Parish; and St. John the Baptist Parish.

1 **(3) District 3 is composed of Precincts 2-3, 2-4, 3-1, 3-2, 5-2, 5-3, 7-2, 7-3,**
 2 **8-1, and 9-1 of Assumption Parish; Iberia Parish; Precincts 4, 5, 25, 26, and 27**
 3 **of Iberville Parish; Precincts 192, 193A, 193B, 194B, 198, 199, 203, 226, 227,**
 4 **228, 229, 230, 231, 234, 235, 236, 237, 238A, 238B, 246, 247, 248, 3-G, 5-G, 8-G,**
 5 **9-G, 10-G, 11-G, 12-G, 13-G, 1-GI, and 1-L of Jefferson Parish; Lafourche**
 6 **Parish; Plaquemines Parish; St. Bernard Parish; Precincts 7, 7A, 13, 14, 15, 16,**
 7 **17, 29, 30, 31, 39, and 40 of St. Landry Parish; Precincts 1, 2, 3, 4, 5, 6, 7, 8, 9,**
 8 **10, 11, 12, 13, 14, 15, 16, 20, 21, 22, 24, 25, 27, 28, and 29 of St. Martin Parish;**
 9 **St. Mary Parish; Terrebonne Parish; and Precincts 16, 19A-1, 21, 21A, 23, 26A,**
 10 **28, 29, 32B, 34, 34A, 35, 36A-1, 37, 38, 39, 40, 41, 42A, 42B, 44, 45A, 46A, 46B-1,**
 11 **46B-2, 46B-3, 46B-4, 49B-1, 49B-2, 50A, 51, 53, 57A, and 57B of Vermilion**
 12 **Parish."**

13 AMENDMENT NO. 2

14 On page 3, delete line 29 and delete page 4 and on page 5, delete lines 1 through 22 and
 15 insert the following:

16 **"(5) District 5 is composed of Avoyelles Parish; Caldwell Parish;**
 17 **Catahoula Parish; Claiborne Parish; Concordia Parish; East Carroll Parish;**
 18 **Franklin Parish; Grant Parish; Jackson Parish; La Salle Parish; Lincoln**
 19 **Parish; Madison Parish; Morehouse Parish; Ouachita Parish; Rapides Parish;**
 20 **Richland Parish; Tensas Parish; Union Parish; and West Carroll Parish.**

21 **(6) District 6 is composed of Precincts 1, 2, 3, 4, 5, 6, 7, 8, 9, 10, 11, 12,**
 22 **13, 14, 15, 16, 17, 18, 20, 21, 22, 23, 24, 25, 26, 27, 31, 32, 33, 34, 35, 40, 41, 43, 58,**
 23 **61, 62, 63, 64, 66, 71, 72, 73, 76, 77, and 78 of Ascension Parish; Precincts 1-7,**
 24 **1-8, 1-9, 1-12, 1-33, 1-34, 1-35, 1-39, 1-40, 1-41, 1-42, 1-43, 1-44, 1-46, 1-47, 1-48,**
 25 **1-49, 1-52, 1-53, 1-55, 1-56, 1-57, 1-60, 1-64, 1-65, 1-69, 1-72, 1-74, 1-75, 1-76,**
 26 **1-79, 1-80, 1-89, 1-90, 1-98, 1-99, 1-103, 1-105, 2-6, 2-7, 2-8, 2-18, 2-21, 2-26, 2-29,**
 27 **2-33, 2-34, 2-35, 2-36, 3-1, 3-2, 3-3, 3-4, 3-6, 3-7, 3-9, 3-10, 3-11, 3-13, 3-14, 3-15,**
 28 **3-16, 3-17, 3-18, 3-19, 3-21, 3-22, 3-25, 3-26, 3-27, 3-28, 3-29, 3-30, 3-31, 3-32,**
 29 **3-33, 3-34, 3-35, 3-36, 3-37, 3-38, 3-39, 3-40, 3-41, 3-43, 3-45, 3-46, 3-47, 3-48,**
 30 **3-49, 3-51, 3-52, 3-53, 3-56, 3-58, 3-59, 3-60, 3-61, 3-62, 3-63, 3-64, 3-66, 3-67,**
 31 **3-68, 3-70, 3-71, and 3-72 of East Baton Rouge Parish; Livingston Parish; and**
 32 **Precincts 27, 28, 33, 40, 40A, 41, 42, 42A, 43, 44, 45, 45A, 46, 47, 48, 49, 70, 70A,**
 33 **71, 72, 72A, 73, 74, 112, 114, 116, 117, 118, 119, 120, 120A, 120B, 121, 121A, 122,**
 34 **122A, 122B, 123, 124, 124A, 125, 127, 127A, 129, 129A, 133, 133A, 137, 137A,**
 35 **137B, 137C, 137D, 139, 141, 141A, 143, 143A, 145, 147, 149, 149A, and 151 of**
 36 **Tangipahoa Parish.**

37 **(7) District 7 is composed of Acadia Parish; Allen Parish; Beauregard**
 38 **Parish; Calcasieu Parish; Cameron Parish; Jefferson Davis Parish; Precincts**
 39 **1, 2, 3, 6, 8, 12, 26, 27, 28, 29, 30, 31, 32, 33, 34, 35, 36, 37, 38, 39, 40, 41, 42, 43,**
 40 **44, 45, 46, 47, 48, 49, 65, 66, 67, 69, 70, 71, 72, 73, 74, 75, 76, 77, 78, 79, 80, 81, 82,**
 41 **83, 84, 85, 86, 87, 88, 89, 90, 91, 92, 93, 94, 95, 96, 97, 98, 99, 100, 101, 102, 103,**
 42 **104, 105, 106, 107, 108, 109, 110, 111, 114, 115, 116, 117, 118, 119, 120, 121, 122,**
 43 **123, 124, 125, 126, 127, and 128 of Lafayette Parish; Precincts 41, 42, and 43 of**
 44 **St. Landry Parish; and Precincts 1, 2, 5A, 6, 7A-1, 7B, 8B, 9, 10A, 11, 12, 14, 18,**
 45 **19A, 19B, 20A-2, 20B-1, 24, 25, 25A, and 26 of Vermilion Parish.**

46 **(8) District 8 is composed of Precincts 28, 30, 36, 37, 39, 42, 44, 45, 47,**
 47 **48, 50, 51, 52, 53, 54, 55, 57, and 65 of Ascension Parish; Precincts 1-1, 1-2, 1-3,**
 48 **1-4, 1-5, 1-6, 1-10, 1-11, 1-13, 1-14, 1-15, 1-16, 1-17, 1-18, 1-19, 1-20, 1-21, 1-22,**
 49 **1-23, 1-24, 1-25, 1-26, 1-27, 1-28, 1-29, 1-30, 1-31, 1-32, 1-36, 1-37, 1-38, 1-45,**
 50 **1-50, 1-51, 1-54, 1-58, 1-59, 1-61, 1-62, 1-63, 1-66, 1-67, 1-68, 1-70, 1-71, 1-73,**
 51 **1-77, 1-78, 1-81, 1-82, 1-83, 1-84, 1-85, 1-86, 1-87, 1-88, 1-91, 1-92, 1-93, 1-94,**
 52 **1-95, 1-97, 1-100, 1-101, 1-102, 1-104, 1-107, 2-1, 2-2, 2-3, 2-4, 2-5, 2-9, 2-10, 2-11,**
 53 **2-12, 2-13, 2-14, 2-15, 2-16, 2-17, 2-19, 2-20, 2-22, 2-23, 2-24, 2-25, 2-27, 2-28,**
 54 **2-30, 2-31, 2-32, 2-37, 3-5, 3-8, 3-12, 3-20, 3-23, 3-24, 3-44, 3-50, 3-54, 3-55, 3-57,**
 55 **3-65, and 3-69 of East Baton Rouge Parish; East Feliciana Parish; Evangeline**
 56 **Parish; Precincts 1, 3, 6, 7, 9, 10, 11, 12, 13, 13C, 14, 14A, 15, 15B, 16, 17, 18, 19,**

1 20, 21, 22, 23, 24, 28, 29, 31, and 32 of Iberville Parish; Precincts 4, 5, 7, 9, 10,
2 11, 13, 14, 15, 16, 17, 18, 19, 20, 21, 22, 23, 24, 25, 51, 52, 53, 54, 55, 56, 57, 58, 59,
3 60, 61, 62, 63, 64, 68, 112, and 113 of Lafayette Parish; Pointe Coupee Parish;
4 St. Helena Parish; Precincts 1, 2, 3, 4, 5, 6, 8, 9, 10, 11, 12, 18, 19, 20, 21, 22, 23,
5 24, 25, 26, 27, 28, 32, 33, 34, 35, 36, 37, 38, 44, 45, 46, 47, 48, 49, 50, 51, and 52
6 of St. Landry Parish; Precincts 17, 18, 19, 23, and 26 of St. Martin Parish;
7 Precincts 1, 2, 6, 11, 15, 16, 17, 18, 26, 101, 102, 104, 104A, 105, 106, 106A, 107,
8 108, 109, 110, 111A, and 115B of Tangipahoa Parish; Washington Parish; West
9 Baton Rouge Parish; and West Feliciana Parish."

Differing Assignments



DB: LA 2020 12 - CENSUS
Plan Type: BESE

Plan: HCASB14 3645 121

	HCASB14 3645 121	Senate Bill 14 Engrossed
Allen		
1-1	7	5
1-2	7	5
1-3	7	5
1-4	7	5
1-5	7	5
1-6	7	5
2-1	7	5
2-2	7	5
2-2-A	7	5
2-3	7	5
2-4-C	7	5
2-4-O	7	5
2-5	7	5
2-6	7	5
3-1	7	5
3-2	7	5
4-2	7	5
4-3	7	5
5-2	7	5
5-3	7	5
5-4-C	7	5
5-4-O	7	5
5-5	7	5
5-7	7	5
5-8A	7	5
5-9	7	5
5-10	7	5
5-12	7	5
5-13	7	5
Ascension		
28	8	6
53	8	3
Assumption		
1-1	2	3
1-2	2	3
2-1	2	3
2-2	2	3
2-5	2	3
4-1	2	3
4-2	2	3
4-3	2	3
5-1	2	3
5-5	2	3
6-1	2	3
6-2	2	3

Differing Assignments



DB: LA 2020 12 - CENSUS
Plan Type: BESE

Plan: HCASB14 3645 121

	HCASB14 3645 121	Senate Bill 14 Engrossed
6-3	2	3
7-1	2	3
Avoyelles		
1-1	5	8
1-2	5	8
1-3	5	8
2-1	5	8
2-2	5	8
2-2A	5	8
2-2B	5	8
2-2C	5	8
2-2D	5	8
2-2F	5	8
2-3A	5	8
2-4	5	8
2-4A	5	8
2-5	5	8
2-5E	5	8
2-7	5	8
2-8	5	8
3-1	5	8
3-1B	5	8
3-3	5	8
4-1	5	8
4-2	5	8
4-2A	5	8
5-1	5	8
5-1A	5	8
6-1A	5	8
6-2	5	8
6-2A	5	8
7-1	5	8
7-3	5	8
7-3B	5	8
8-1	5	8
8-2A	5	8
8-2B	5	8
8-3	5	8
8-3A	5	8
9-1A	5	8
9-2	5	8
9-2A	5	8
9-3	5	8
9-4	5	8
9-4B	5	8

Differing Assignments



DB: LA 2020 12 - CENSUS
Plan Type: BESE

Plan: HCASB14 3645 121

	HCASB14 3645 121	Senate Bill 14 Engrossed
9-5B	5	8
10-2	5	8
10-2A	5	8
10-3A	5	8
10-4	5	8
11-1	5	8
11-2A	5	8
East Baton Rouge		
1-9	6	8
1-55	6	8
1-60	6	8
1-65	6	8
1-90	6	8
1-107	8	6
2-18	6	8
2-21	6	8
2-26	6	8
2-29	6	8
2-34	6	8
2-35	6	8
2-36	6	8
3-5	8	6
3-32	6	8
3-72	6	8
Evangeline		
1020	8	5
1031	8	5
1040	8	5
1041	8	5
1050	8	5
1060	8	5
1130	8	5
1140	8	5
1150	8	5
1161	8	5
2010	8	5
2010A	8	5
2020	8	5
2030	8	5
2040	8	5
3010	8	5
3031	8	5
3040	8	5
3052	8	5
3070	8	5

Differing Assignments



DB: LA 2020 12 - CENSUS
Plan Type: BESE

Plan: HCASB14 3645 121

	HCASB14 3645 121	Senate Bill 14 Engrossed
3071	8	5
4001	8	5
4010	8	5
4011	8	5
4012	8	5
4020	8	5
4021	8	5
4030	8	5
4040	8	5
5004	8	5
5010	8	5
5020	8	5
5030	8	5
5040	8	5
5041	8	5
5050	8	5
Iberville		
13	8	3
14	8	3
15B	8	3
17	8	3
18	8	3
24	8	3
Jefferson		
116	1	2
170	1	2
171	1	3
172	1	3
174	2	3
175	1	3
176	1	3
177	1	3
178	1	3
179A	1	2
182	1	3
183	1	3
184	1	3
185A	1	3
189	1	3
190	1	2
204	1	3
210	2	3
211	2	3
1-G	2	3
4-G	2	3

Differing Assignments



DB: LA 2020 12 - CENSUS
Plan Type: BESE

Plan: HCASB14 3645 121

	HCASB14 3645 121	Senate Bill 14 Engrossed
7-KB	1	2
14-K	1	2
25-K	1	2
27-K	1	2
29-K	1	2
1-W	1	3
3-W	1	3
4-W	1	3
5-W	1	3
6-W	1	3
7-W	1	3
Lafayette		
9	8	7
10	8	7
13	8	7
25	8	7
113	8	7
Orleans		
13-4	1	2
13-6	1	2
13-7	1	2
13-8	1	2
13-9	1	2
13-10	1	2
14-1	1	2
14-2	1	2
14-3	1	2
14-4	1	2
14-5	1	2
14-6	1	2
14-7	1	2
14-8	1	2
14-9	1	2
14-10	1	2
14-11	1	2
14-12	1	2
14-13A	1	2
14-14	1	2
14-15	1	2
14-16	1	2
14-17	1	2
14-18A	1	2
14-19	1	2
14-20	1	2
14-21	1	2

Differing Assignments



DB: LA 2020 12 - CENSUS
Plan Type: BESE

Plan: HCASB14 3645 121

	HCASB14 3645 121	Senate Bill 14 Engrossed
16-1	1	2
16-1A	1	2
16-2	1	2
17-1	1	2
Pointe Coupee		
13	8	3
14	8	3
15	8	3
17	8	3
18	8	3
19	8	3
20	8	3
St. Charles		
1-3	2	3
1-5	2	3
2-1	2	3
2-2	2	3
2-3	2	3
2-4	2	3
2-5	2	3
4-1	2	3
4-2	2	3
4-3	2	3
4-4	2	3
7-1	2	3
7-2	2	3
7-3	2	3
7-4	2	3
St. James		
1	2	6
2	2	6
3	2	6
4	2	6
5	2	6
6	2	6
7	2	6
8	2	6
9	2	6
10	2	6
11	2	6
12	2	6
13	2	6
14	2	6
15	2	6
16	2	6
17	2	6

Differing Assignments



DB: LA 2020 12 - CENSUS
Plan Type: BESE

Plan: HCASB14 3645 121

	HCASB14 3645 121	Senate Bill 14 Engrossed
18	2	6
19	2	6
St. Martin		
7	3	8
8	3	8
9	3	8
10	3	8
14	3	8
19	8	3
Tangipahoa		
27	6	8
28	6	1
44	6	1
102	8	1
104	8	1
104A	8	1
106	8	1
106A	8	1
108	8	1
110	8	1
112	6	1
114	6	1
116	6	1
118	6	1
119	6	1
120	6	1
120A	6	1
120B	6	1
122	6	1
122A	6	1
122B	6	1
123	6	1
124	6	1
124A	6	1
145	6	1
147	6	1
151	6	1
Lake Pontchartrain	6	1
Vermilion		
16	3	7
19A-1	3	7
21	3	7
21A	3	7
23	3	7
26A	3	7
28	3	7

Differing Assignments



DB: LA 2020 12 - CENSUS
Plan Type: BESE

Plan: HCASB14 3645 121

	HCASB14 3645 121	Senate Bill 14 Engrossed
29	3	7
32B	3	7
34	3	7
34A	3	7
35	3	7
36A-1	3	7
37	3	7
38	3	7
39	3	7
40	3	7
41	3	7
42A	3	7
42B	3	7
44	3	7
45A	3	7
46A	3	7
46B-1	3	7
46B-2	3	7
46B-3	3	7
46B-4	3	7
49B-1	3	7
49B-2	3	7
50A	3	7
51	3	7
53	3	7
57A	3	7
57B	3	7
Washington		
1-1	8	1
1-2	8	1
2-1	8	1
3-1	8	1
3-2	8	1
3-3	8	1
3-3A	8	1
3-3B	8	1
3-3C	8	1
4-1	8	1
4-1A	8	1
4-2A	8	1
4-3	8	1
4-3B	8	1
4-4	8	1
4-5	8	1
4-5B	8	1

Differing Assignments



DB: LA 2020 12 - CENSUS
Plan Type: BESE

Plan: HCASB14 3645 121

	HCASB14 3645 121	Senate Bill 14 Engrossed
4-6	8	1
4-7	8	1
4-7B	8	1
4-8	8	1
4-9	8	1
4-9A	8	1
4-10	8	1
4-10A	8	1
4-11	8	1
5-1	8	1
5-2	8	1
5-3	8	1
6-1	8	1
6-2	8	1
6-3	8	1
6-4	8	1
7-1	8	1
7-1A	8	1
7-2	8	1
7-3	8	1
8-1	8	1
8-2	8	1
8-3	8	1
9-1	8	1

Plan Statistics

Plan: HCASB14 3645 121

<u>Districts:</u>	<u># of Members</u>	<u>Actual Population</u>	<u>Ideal Population</u>	<u>Absolute Deviation</u>	<u>Relative Deviation</u>
District 1	1	582,430	582,219	211	0.036%
District 2	1	567,081	582,219	-15,138	-2.600%
District 3	1	565,283	582,219	-16,936	-2.909%
District 4	1	573,149	582,219	-9,070	-1.558%
District 5	1	599,806	582,219	17,587	3.021%
District 6	1	597,477	582,219	15,258	2.621%
District 7	1	589,172	582,219	6,953	1.194%
District 8	1	583,359	582,219	1,140	0.196%

Grand Total:	8	4,657,757	4,657,752
--------------	---	-----------	-----------

Ideal Population Per Member:	582219			
Number of Districts for Plan Type:	8			
Range of District Populations:	565,283	to	599,806	
Absolute Mean Deviation:	4,315			
Absolute Range:	-16,936	to	17,587	
Absolute Overall Range:	34,523			
Relative Mean Deviation:	1.77%			
Relative Range:	-2.91%	to	3.02%	
Relative Overall Range:	5.93%			

<i>Ideal - Actual:</i>	<i>-5</i>
<i>Remainder:</i>	<i>5</i>
<i>Unassigned Population:</i>	<i>0</i>

Total Population

Plan: HCASB14 3645 121

	Total Population	Total White	Total Black	Total Asian	Total American Indian	Total Other	Total Hispanic	VAP Total	VAP White	VAP Black	VAP Asian	VAP American Indian	VAP Other	VAP Hispanic Total
District 1	582,430	407,550	80,848	21,531	10,919	61,582	77,251	458,748	331,598	58,224	16,087	8,210	44,629	55,616
	100.000%	69.974%	13.881%	3.697%	1.875%	10.573%	13.264%	100.000%	72.283%	12.692%	3.507%	1.790%	9.728%	12.123%
District 2	567,081	166,875	338,559	17,493	5,964	38,190	49,911	440,377	141,423	253,040	14,016	4,632	27,266	34,777
	100.000%	29.427%	59.702%	3.085%	1.052%	6.734%	8.801%	100.000%	32.114%	57.460%	3.183%	1.052%	6.192%	7.897%
District 3	565,283	355,030	138,852	14,212	19,881	37,308	45,519	427,347	281,372	96,604	10,435	13,652	25,284	30,097
	100.000%	62.806%	24.563%	2.514%	3.517%	6.600%	8.052%	100.000%	65.842%	22.606%	2.442%	3.195%	5.917%	7.043%
District 4	573,149	311,751	214,137	9,934	14,365	22,962	27,865	436,843	248,628	154,034	7,237	10,848	16,096	18,743
	100.000%	54.393%	37.361%	1.733%	2.506%	4.006%	4.862%	100.000%	56.915%	35.261%	1.657%	2.483%	3.685%	4.291%
District 5	599,806	353,883	209,371	7,914	10,629	18,009	21,866	460,459	281,870	150,887	6,088	8,074	13,540	16,086
	100.000%	59.000%	34.906%	1.319%	1.772%	3.002%	3.646%	100.000%	61.215%	32.769%	1.322%	1.753%	2.941%	3.493%
District 6	597,477	419,770	115,855	16,540	10,317	34,995	40,199	456,171	330,974	81,343	12,060	7,779	24,015	26,919
	100.000%	70.257%	19.391%	2.768%	1.727%	5.857%	6.728%	100.000%	72.555%	17.832%	2.644%	1.705%	5.264%	5.901%
District 7	589,172	422,992	119,196	12,172	9,732	25,080	30,930	444,962	328,416	83,242	8,703	7,138	17,463	21,232
	100.000%	71.794%	20.231%	2.066%	1.652%	4.257%	5.250%	100.000%	73.808%	18.708%	1.956%	1.604%	3.925%	4.772%
District 8	583,359	219,801	326,301	7,492	5,253	24,512	29,008	445,641	180,230	238,395	5,790	3,907	17,319	20,192
	100.000%	37.679%	55.935%	1.284%	0.900%	4.202%	4.973%	100.000%	40.443%	53.495%	1.299%	0.877%	3.886%	4.531%
Grand Total	4,657,757	2,657,652	1,543,119	107,288	87,060	262,638	322,549	3,570,548	2,124,511	1,115,769	80,416	64,240	185,612	223,662
	100.000%	57.059%	33.130%	2.303%	1.869%	5.639%	6.925%	100.000%	59.501%	31.249%	2.252%	1.799%	5.198%	6.264%

Voter Registration

Plan: HCASB14 3645 121

	Reg Total Dec 2021	Reg White Dec 2021	Reg Black Dec 2021	Reg Other Dec 2021	Reg Dem Total Dec 2021	Reg Rep Total Dec 2021	Reg Other Total Dec 2021
District 1	377,779	301,872	39,260	36,647	102,929	160,332	114,518
	82.350%	79.907%	10.392%	9.701%	27.246%	42.441%	30.313%
District 2	369,379	118,832	220,397	30,150	233,654	43,925	91,800
	83.878%	32.171%	59.667%	8.162%	63.256%	11.892%	24.853%
District 3	342,294	244,776	76,019	21,499	124,109	122,031	96,154
	80.097%	71.510%	22.209%	6.281%	36.258%	35.651%	28.091%
District 4	347,087	207,258	123,282	16,547	137,526	122,007	87,554
	79.453%	59.714%	35.519%	4.767%	39.623%	35.152%	25.225%
District 5	374,436	241,241	121,922	11,273	143,805	140,147	90,484
	81.318%	64.428%	32.562%	3.011%	38.406%	37.429%	24.165%
District 6	364,461	288,020	56,959	19,482	101,953	159,725	102,783
	79.896%	79.026%	15.628%	5.345%	27.974%	43.825%	28.201%
District 7	356,693	280,425	60,548	15,720	111,005	147,022	98,666
	80.163%	78.618%	16.975%	4.407%	31.121%	41.218%	27.661%
District 8	362,217	145,565	204,361	12,291	206,023	73,591	82,603
	81.280%	40.187%	56.419%	3.393%	56.878%	20.317%	22.805%
Grand Total	2,894,346	1,827,989	902,748	163,609	1,161,004	968,780	764,562

Splits

Plan: HCASB14 3645 121

	Total Population	Total White	Total Black	Total Asian	Total American Indian	Total Other	VAP Total	VAP White	VAP Black	VAP Asian	VAP American Indian	VAP Other	Reg Total Dec 2021	Reg White Dec 2021	Reg Black Dec 2021	Reg Other Dec 2021
District 1																
*Jefferson	260,747	165,581	37,395	13,449	4,612	39,710	209,367	139,259	27,398	10,231	3,533	28,946	159,887	123,228	15,973	20,686
*Orleans	57,113	45,328	4,810	2,308	647	4,020	47,153	37,718	4,065	1,781	516	3,073	39,113	32,920	2,145	4,048
St. Tammany	264,570	196,641	38,643	5,774	5,660	17,852	202,228	154,621	26,761	4,075	4,161	12,610	178,779	145,724	21,142	11,913
District 1	582,430	407,550	80,848	21,531	10,919	61,582	458,748	331,598	58,224	16,087	8,210	44,629	377,779	301,872	39,260	36,647
	100.000%	69.974%	13.881%	3.697%	1.875%	10.573%	100.000%	72.283%	12.692%	3.507%	1.790%	9.728%	82.350%	79.907%	10.392%	9.701%
District 2																
*Assumption	9,701	4,158	5,201	38	76	228	7,552	3,318	3,977	19	60	178	7,034	2,932	4,003	99
*Jefferson	115,278	24,183	70,313	5,607	1,397	13,778	86,233	19,912	51,436	4,375	1,059	9,451	66,350	15,052	43,482	7,816
*Orleans	326,884	81,134	214,159	10,548	3,019	18,024	259,043	72,534	162,003	8,739	2,432	13,335	217,131	59,066	139,380	18,685
St. Charles	52,549	33,550	13,928	837	925	3,309	39,541	26,154	9,890	529	667	2,301	34,985	24,309	8,797	1,879
St. James	20,192	9,973	9,762	60	82	315	15,505	7,883	7,297	31	64	230	14,966	7,254	7,501	211
St. John the Baptist	42,477	13,877	25,196	403	465	2,536	32,503	11,622	18,437	323	350	1,771	28,913	10,219	17,234	1,460
District 2	567,081	166,875	338,559	17,493	5,964	38,190	440,377	141,423	253,040	14,016	4,632	27,266	369,379	118,832	220,397	30,150
	100.000%	29.427%	59.702%	3.085%	1.052%	6.734%	100.000%	32.114%	57.460%	3.183%	1.052%	6.192%	83.878%	32.171%	59.667%	8.162%
District 3																
*Assumption	11,338	9,564	1,019	58	182	515	9,064	7,827	730	38	137	332	7,405	6,768	507	130
Iberia	69,929	39,206	24,556	2,123	794	3,250	52,791	31,295	17,069	1,562	581	2,284	44,526	28,287	14,352	1,887
*Iberville	4,213	3,921	118	9	67	98	3,439	3,226	72	8	59	74	3,023	2,905	52	66
*Jefferson	64,756	31,171	18,509	3,968	1,677	9,431	49,054	24,964	13,341	3,086	1,243	6,420	36,864	21,336	10,121	5,407
Lafourche	97,557	71,710	15,855	1,025	4,224	4,743	74,619	56,838	11,077	738	2,777	3,189	58,278	48,467	7,164	2,647
Plaquemines	23,515	14,287	5,428	1,317	697	1,786	17,334	10,856	3,857	925	500	1,196	13,908	9,513	3,134	1,261
St. Bernard	43,764	24,497	12,309	1,381	947	4,630	31,775	18,992	7,944	982	688	3,169	25,653	18,233	5,497	1,923
*St. Landry	16,838	12,917	3,403	87	160	271	12,761	10,013	2,416	59	104	169	11,619	9,224	2,121	274
*St. Martin	41,923	28,203	11,546	535	443	1,196	32,065	22,272	8,217	380	346	850	28,615	20,318	7,622	675
St. Mary	49,406	26,949	15,991	835	1,670	3,961	37,521	21,594	11,520	593	1,173	2,641	30,210	18,712	9,891	1,607
Terrebonne	109,580	69,934	23,147	1,743	8,637	6,119	82,505	55,631	15,796	1,239	5,750	4,089	61,720	45,395	11,566	4,759
*Vermilion	32,464	22,671	6,971	1,131	383	1,308	24,419	17,864	4,565	825	294	871	20,473	15,618	3,992	863
District 3	565,283	355,030	138,852	14,212	19,881	37,308	427,347	281,372	96,604	10,435	13,652	25,284	342,294	244,776	76,019	21,499
	100.000%	62.806%	24.563%	2.514%	3.517%	6.600%	100.000%	65.842%	22.606%	2.442%	3.195%	5.917%	80.097%	71.510%	22.209%	6.281%
District 4																
Bienville	12,981	6,950	5,600	57	207	167	10,073	5,486	4,284	30	162	111	8,847	4,843	3,917	87
Bossier	128,746	81,052	32,551	3,492	3,273	8,378	95,876	62,931	22,440	2,448	2,477	5,580	69,743	50,861	14,838	4,044
Caddo	237,848	103,457	119,304	4,034	3,840	7,213	182,407	85,059	86,359	3,008	2,958	5,023	151,296	73,113	71,249	6,934
De Soto	26,812	15,284	9,973	117	740	698	20,440	11,909	7,425	86	557	463	18,713	11,330	6,810	573
Natchitoches	37,515	19,361	15,725	255	861	1,313	29,349	16,010	11,415	198	683	1,043	23,107	12,850	9,224	1,033

Splits

Plan: HCASB14 3645 121

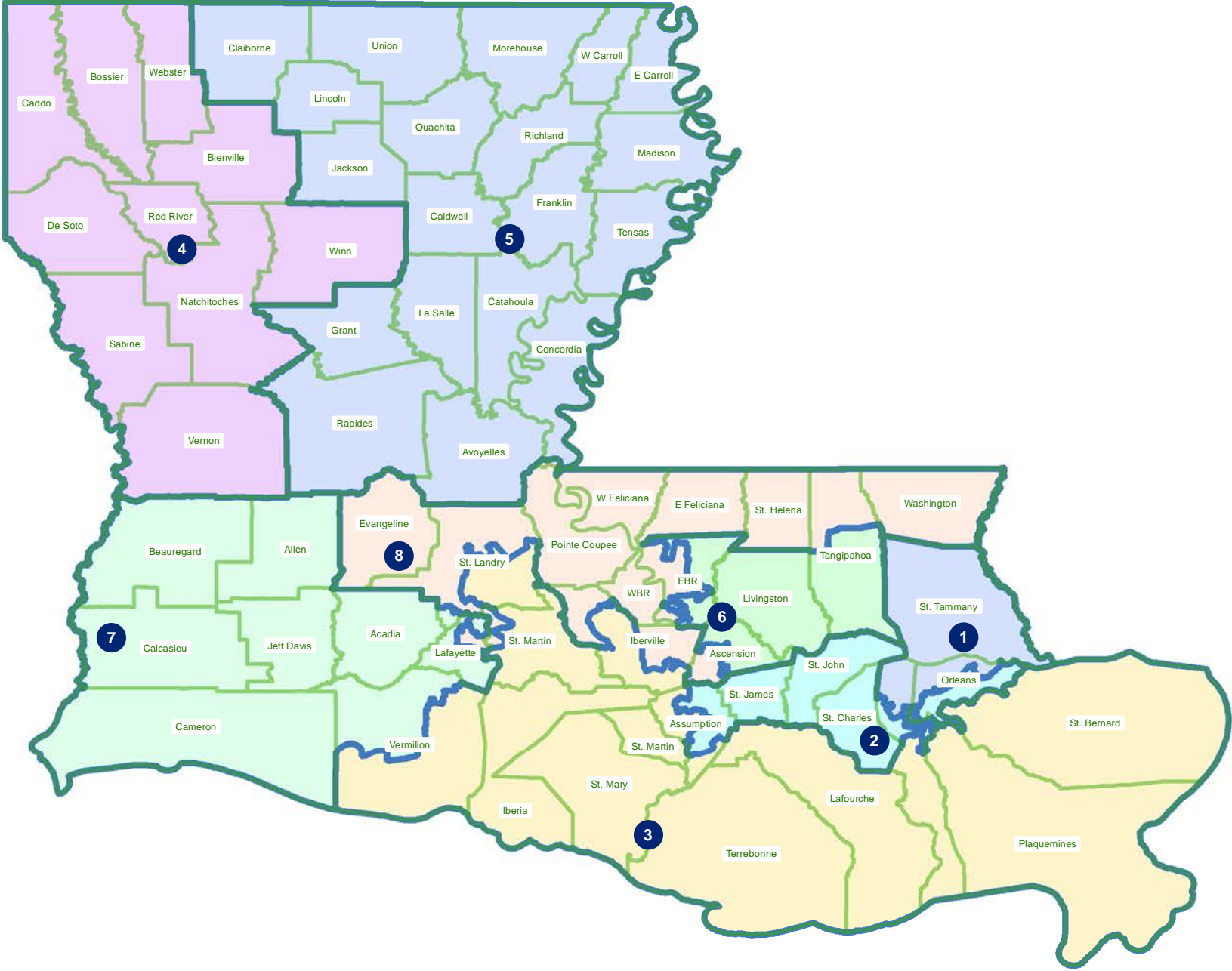
	Total Population	Total White	Total Black	Total Asian	Total American Indian	Total Other	VAP Total	VAP White	VAP Black	VAP Asian	VAP American Indian	VAP Other	Reg Total Dec 2021	Reg White Dec 2021	Reg Black Dec 2021	Reg Other Dec 2021
District 4																
Red River	7,620	4,195	3,106	25	171	123	5,714	3,338	2,164	3	116	93	5,631	3,130	2,418	83
Sabine	22,155	15,036	3,861	94	2,723	441	17,064	12,054	2,655	66	1,970	319	14,547	11,023	2,184	1,340
Vernon	48,750	35,087	7,611	1,442	1,600	3,010	36,261	26,765	5,133	1,074	1,160	2,129	24,060	19,182	3,011	1,867
Webster	36,967	22,735	12,679	208	687	658	28,753	18,144	9,464	154	558	433	22,737	14,938	7,339	460
Winn	13,755	8,594	3,727	210	263	961	10,906	6,932	2,695	170	207	902	8,406	5,988	2,292	126
District 4	573,149	311,751	214,137	9,934	14,365	22,962	436,843	248,628	154,034	7,237	10,848	16,096	347,087	207,258	123,282	16,547
	100.000%	54.393%	37.361%	1.733%	2.506%	4.006%	100.000%	56.915%	35.261%	1.657%	2.483%	3.685%	79.453%	59.714%	35.519%	4.767%
District 5																
Avoyelles	39,693	25,625	11,678	434	767	1,189	30,578	20,269	8,311	379	570	1,049	23,426	16,534	6,294	598
Caldwell	9,645	7,646	1,632	51	150	166	7,478	5,969	1,224	46	116	123	6,031	5,124	818	89
Catahoula	8,906	5,776	2,395	46	119	570	6,951	4,557	1,736	33	87	538	6,467	4,639	1,770	58
Claiborne	14,170	7,263	6,360	88	185	274	11,507	6,258	4,824	55	140	230	8,598	4,632	3,820	146
Concordia	18,687	10,275	7,725	122	233	332	14,217	8,108	5,613	100	167	229	11,964	7,222	4,540	202
East Carroll	7,459	2,054	5,272	29	43	61	5,901	1,773	4,043	19	27	39	4,709	1,306	3,359	44
Franklin	19,774	12,492	6,802	70	205	205	15,028	9,901	4,779	44	153	151	13,159	9,015	4,034	110
Grant	22,169	17,709	3,335	133	644	348	17,527	13,964	2,717	97	507	242	12,688	11,174	1,176	338
Jackson	15,031	9,967	4,166	175	255	468	11,783	7,967	3,125	140	174	377	9,449	6,647	2,610	192
La Salle	14,791	11,348	1,422	283	372	1,366	11,563	8,636	1,065	264	271	1,327	8,792	7,978	637	177
Lincoln	48,396	26,034	19,364	892	662	1,444	38,655	21,306	15,119	744	526	960	25,649	15,672	9,016	961
Madison	10,017	3,475	6,363	20	59	100	7,435	2,906	4,391	9	48	81	7,278	2,494	4,674	110
Morehouse	25,629	12,281	12,484	160	370	334	20,062	10,095	9,300	117	279	271	16,922	8,505	8,131	286
Ouachita	160,368	88,545	61,217	2,788	2,661	5,157	120,200	69,974	42,290	2,118	2,059	3,759	99,752	60,515	35,658	3,579
Rapides	130,023	77,510	42,592	2,428	3,102	4,391	98,792	61,373	30,205	1,786	2,334	3,094	80,176	52,832	23,775	3,569
Richland	20,043	11,785	7,603	83	258	314	15,383	9,338	5,546	66	203	230	13,662	8,470	4,961	231
Tensas	4,147	1,744	2,312	23	26	42	3,235	1,446	1,728	12	23	26	3,455	1,503	1,917	35
Union	21,107	14,460	5,224	62	338	1,023	16,632	11,807	3,861	39	254	671	15,221	11,066	3,692	463
West Carroll	9,751	7,894	1,425	27	180	225	7,532	6,223	1,010	20	136	143	7,038	5,913	1,040	85
District 5	599,806	353,883	209,371	7,914	10,629	18,009	460,459	281,870	150,887	6,088	8,074	13,540	374,436	241,241	121,922	11,273
	100.000%	59.000%	34.906%	1.319%	1.772%	3.002%	100.000%	61.215%	32.769%	1.322%	1.753%	2.941%	81.318%	64.428%	32.562%	3.011%
District 6																
*Ascension	103,922	74,920	17,479	2,147	1,810	7,566	75,322	55,982	11,772	1,400	1,263	4,905	65,880	52,557	9,581	3,742
*East Baton Rouge	242,296	158,063	55,477	11,356	3,234	14,166	192,559	130,534	40,561	8,572	2,581	10,311	152,652	114,159	28,285	10,208
Livingston	142,282	116,855	12,658	1,697	3,111	7,961	105,141	88,432	8,136	1,099	2,311	5,163	84,568	76,062	5,425	3,081
*Tangipahoa	108,977	69,932	30,241	1,340	2,162	5,302	83,149	56,026	20,874	989	1,624	3,636	61,361	45,242	13,668	2,451
District 6	597,477	419,770	115,855	16,540	10,317	34,995	456,171	330,974	81,343	12,060	7,779	24,015	364,461	288,020	56,959	19,482
	100.000%	70.257%	19.391%	2.768%	1.727%	5.857%	100.000%	72.555%	17.832%	2.644%	1.705%	5.264%	79.896%	79.026%	15.628%	5.345%

Splits

Plan: HCASB14 3645 121

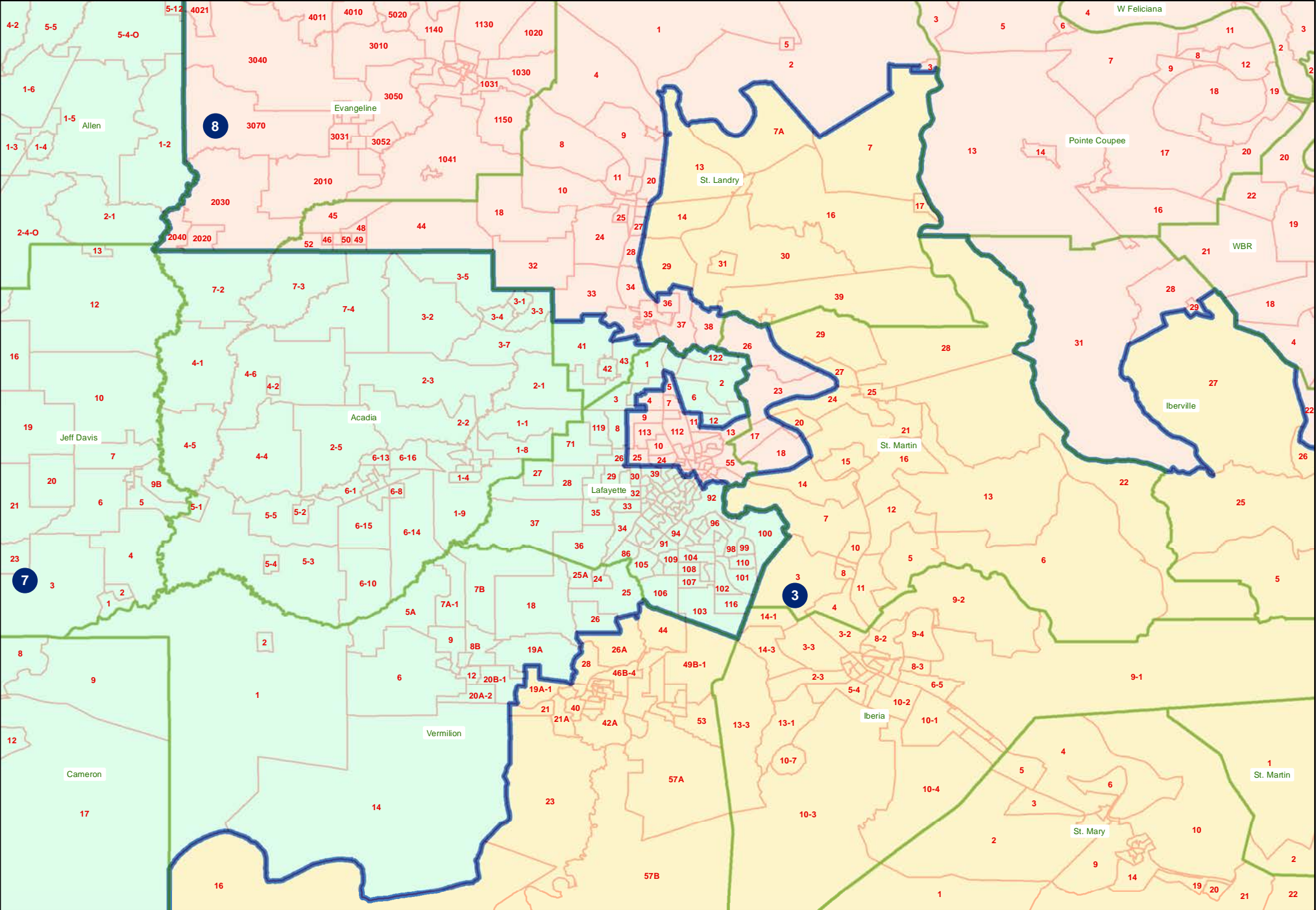
	Total Population	Total White	Total Black	Total Asian	Total American Indian	Total Other	VAP Total	VAP White	VAP Black	VAP Asian	VAP American Indian	VAP Other	Reg Total Dec 2021	Reg White Dec 2021	Reg Black Dec 2021	Reg Other Dec 2021
District 7																
Acadia	57,576	44,480	10,864	238	573	1,421	42,943	34,071	7,383	173	400	916	37,678	30,555	6,407	716
Allen	22,750	16,327	4,490	246	947	740	17,510	12,751	3,275	182	646	656	12,201	9,478	2,217	506
Beauregard	36,549	29,529	4,649	402	1,052	917	27,489	22,304	3,495	269	773	648	22,294	18,771	2,369	1,154
Calcasieu	216,785	139,772	59,386	4,702	3,536	9,389	163,166	108,789	41,898	3,359	2,604	6,516	120,511	85,659	29,513	5,339
Cameron	5,617	5,232	125	30	75	155	4,358	4,100	79	23	47	109	4,789	4,610	88	91
Jefferson Davis	32,250	25,066	5,837	183	472	692	24,039	19,121	4,006	111	325	476	20,013	16,350	3,202	461
*Lafayette	188,892	137,649	31,542	6,037	2,776	10,888	144,039	108,453	21,545	4,363	2,102	7,576	120,727	98,255	15,500	6,972
*St. Landry	3,858	3,131	464	18	61	184	2,825	2,328	339	11	47	100	2,184	1,860	250	74
*Vermilion	24,895	21,806	1,839	316	240	694	18,593	16,499	1,222	212	194	466	16,296	14,887	1,002	407
District 7	589,172	422,992	119,196	12,172	9,732	25,080	444,962	328,416	83,242	8,703	7,138	17,463	356,693	280,425	60,548	15,720
	100.000%	71.794%	20.231%	2.066%	1.652%	4.257%	100.000%	73.808%	18.708%	1.956%	1.604%	3.925%	80.163%	78.618%	16.975%	4.407%
District 8																
*Ascension	22,578	6,221	14,737	153	194	1,273	16,635	5,154	10,367	114	127	873	14,037	4,243	9,233	561
*East Baton Rouge	214,485	38,006	157,921	5,069	1,493	11,996	163,053	33,347	116,229	4,027	1,166	8,284	126,612	24,073	96,390	6,149
East Feliciana	19,539	11,516	7,341	91	262	329	16,183	9,740	5,918	61	198	266	13,600	7,959	5,186	455
Evangeline	32,350	21,354	9,235	241	280	1,240	24,408	16,460	6,483	187	217	1,061	20,553	14,566	5,643	344
*Iberville	26,028	10,912	13,612	193	207	1,104	20,647	9,236	10,160	141	162	948	17,439	7,227	9,845	367
*Lafayette	52,861	15,714	33,594	417	434	2,702	39,836	13,155	24,372	301	285	1,723	32,766	10,390	20,981	1,395
Pointe Coupee	20,758	12,395	7,504	107	159	593	16,250	10,108	5,502	91	119	430	14,675	9,320	5,121	234
St. Helena	10,920	4,527	6,031	39	134	189	8,463	3,805	4,371	28	109	150	8,321	3,628	4,565	128
*St. Landry	61,844	27,563	31,969	394	415	1,503	46,225	21,868	22,742	283	300	1,032	40,679	19,009	20,634	1,036
*St. Martin	9,844	5,056	4,375	62	96	255	7,339	4,006	3,076	27	67	163	6,505	3,616	2,759	130
*Tangipahoa	24,180	11,404	11,638	134	292	712	18,342	9,179	8,343	111	203	506	14,895	7,670	6,857	368
Washington	45,463	29,943	13,434	216	736	1,134	34,951	23,743	9,732	154	561	761	27,587	18,835	8,102	650
West Baton Rouge	27,199	14,307	11,170	287	326	1,109	20,526	11,146	8,149	209	219	803	17,141	9,937	6,865	339
West Feliciana	15,310	10,883	3,740	89	225	373	12,783	9,283	2,951	56	174	319	7,407	5,092	2,180	135
District 8	583,359	219,801	326,301	7,492	5,253	24,512	445,641	180,230	238,395	5,790	3,907	17,319	362,217	145,565	204,361	12,291
	100.000%	37.679%	55.935%	1.284%	0.900%	4.202%	100.000%	40.443%	53.495%	1.299%	0.877%	3.886%	81.280%	40.187%	56.419%	3.393%

HCASB14 3645 121
Statewide



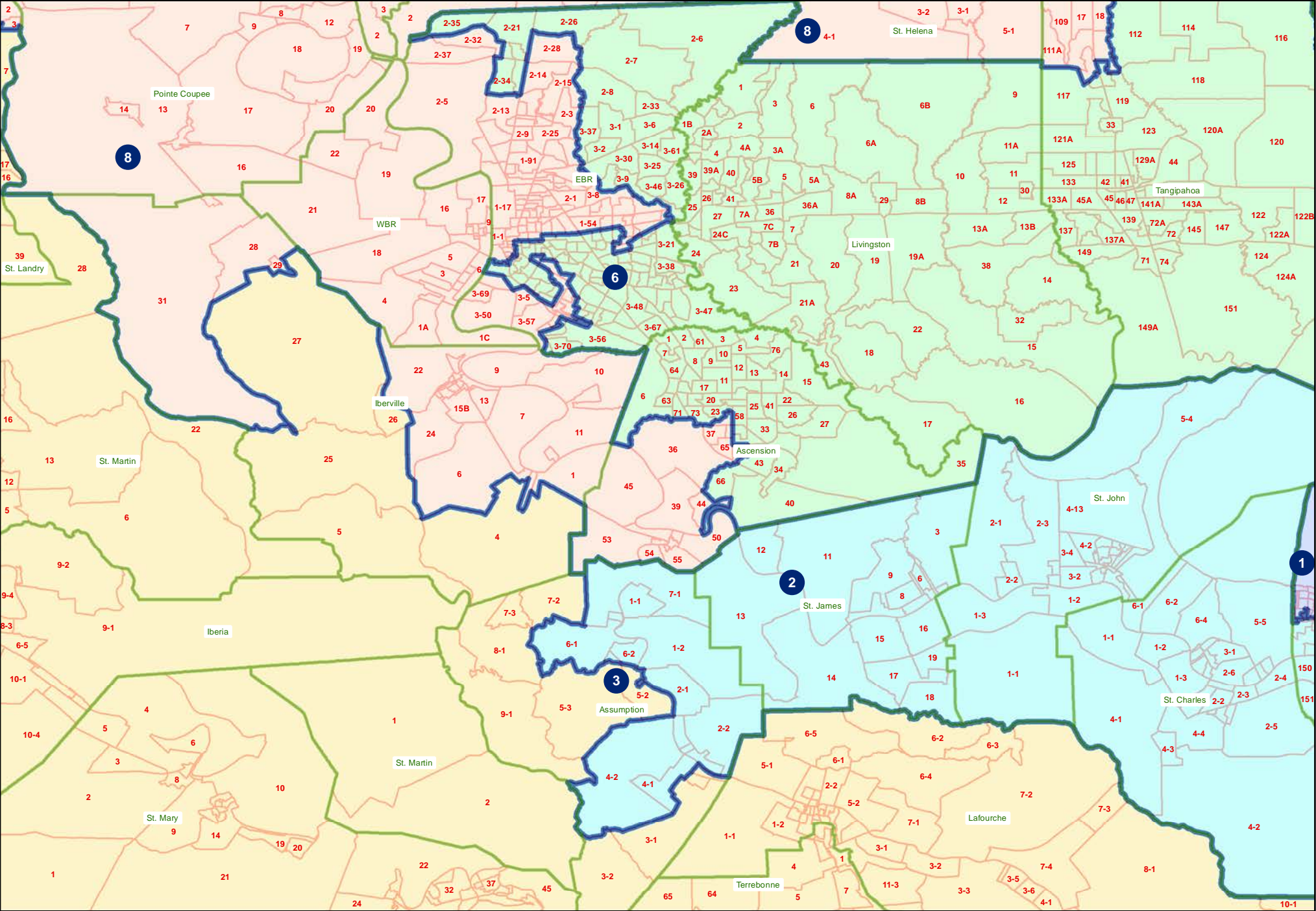
HCASB14 3645 121

Acadiana



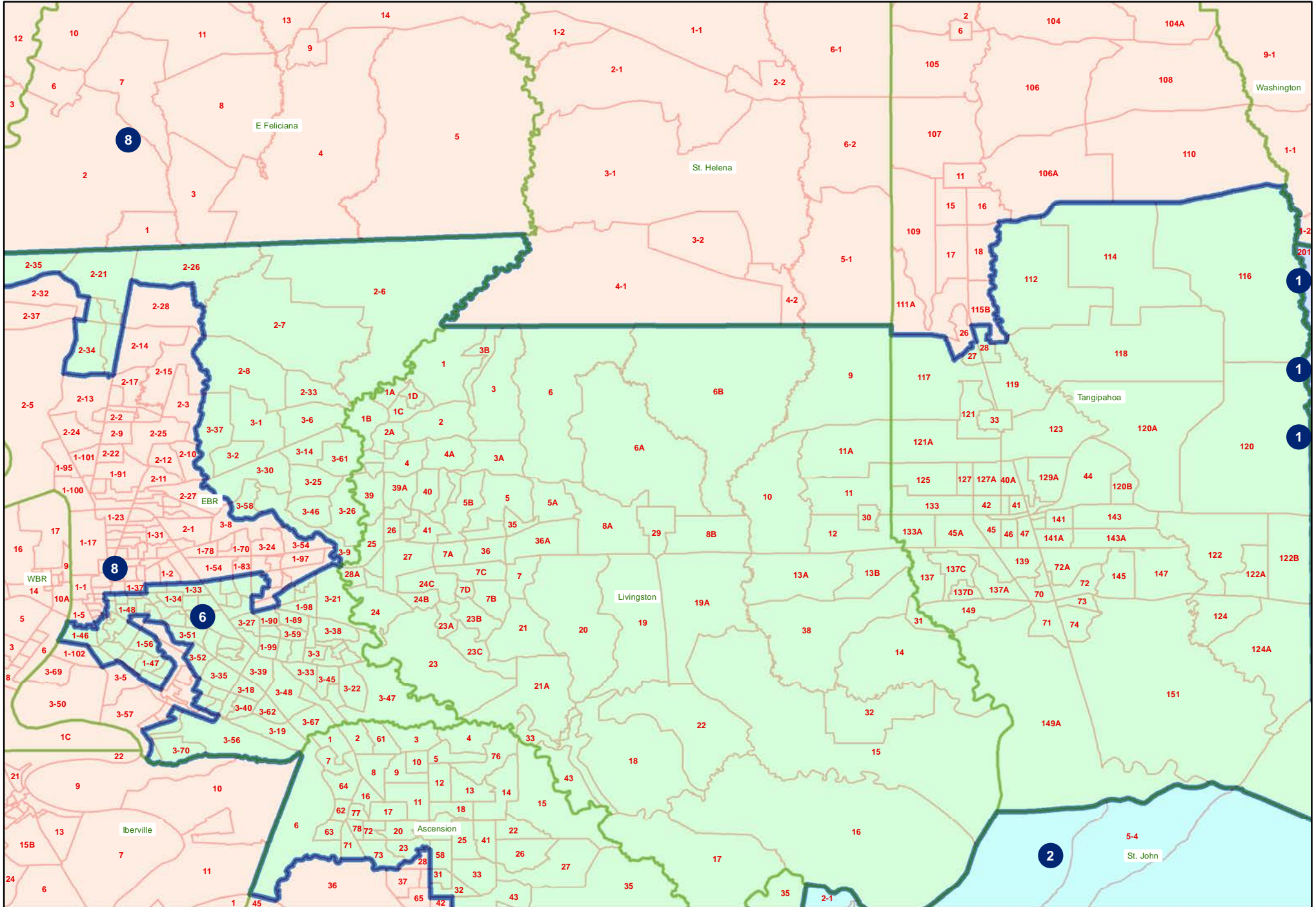
HCASB14 3645 121

River Parishes



HCASB14 3645 121

EBR/Tangipahoa



HCASB14 3645 121

Orleans/Jefferson

