

**SENATE FLOOR AMENDMENTS**

2022 First Extraordinary Session

Amendments proposed by Senator Foil to Reengrossed House Bill No. 3 by Representative Thomas

1 AMENDMENT NO. 1

2 Delete Senate Committee Amendment Nos. 1, 2, and 3 proposed by the Senate Committee  
3 on Senate & Governmental Affairs and adopted by the Senate on February 15, 2022.

4 AMENDMENT NO. 2

5 On page 1, delete lines 13 through 20

6 AMENDMENT NO. 3

7 Delete pages 2 through 4

8 AMENDMENT NO. 4

9 On page 5, delete lines 1 through 16, and insert:

10 "(1) District 1 is composed of Precincts 1, 2, 3, 4, 5, 7, 8, 9, 10, 11, 12, 13,  
11 14, 15, 16, 17, 18, 19, 20, 21, 22, 23, 24, 25, 26, 27, 28, 29, 30, 31, 32, 33, 34, 35, 36,  
12 37, 38, 39, 40, 41, 42, 43, 44, 45, 46, 51, 52, 53, 54, 55, 56, 58, 59, 60, 61, 62, 63, 64,  
13 65, 66, 67, 68, 69, 70, 71, 72, 73, 74, 75, 76, 77, 78, 79, 80, 81, 82, 83, 84, 85, 86, 87,  
14 88, 89, 90, 91, 92, 93, 94, 95, 96, 97, 98, 99, 100, 101, 102, 103, 105, 106, 116, 117,  
15 118, 119, 120, 121, 122, 123, 124, 125A, 125B, 126, 127, 128, 129, 130, 132, 134,  
16 136, 138, 170, 1-H, 2-H, 3-H, 4-H, 5-H, 6-H, 7-H, 8-H, 9-H, 1-K, 2-K, 3-K, 4-K,  
17 5-K, 6-KA, 6-KB, 7-KA, 7-KB, 8-K, 9-K, 10-K, 11-K, 12-K, 13-KA, 14-K, 16-K,  
18 17-K, 18-K, 19-K, 20-K, 25-K, 27-K, 28-K, 29-K, 34-K and 35-K of Jefferson  
19 Parish; Precincts 3-20, 4-7, 4-8, 4-9, 4-11, 4-14, 4-15, 4-17, 4-17A, 4-18, 4-20, 4-21,  
20 4-22, 4-23, 5-15, 5-16, 5-17, 5-18, 7-41, 7-42, 13-4, 13-6, 13-7, 13-8, 13-9, 13-10,  
21 14-1, 14-2, 14-3, 14-4, 14-5, 14-6, 14-7, 14-8, 14-9, 14-10, 14-11, 14-12, 14-13A,  
22 14-14, 14-15, 14-16, 14-17, 14-18A, 14-19, 14-20, 14-21, 16-1, 16-1A, 16-2, 17-1,  
23 17-17, 17-18, 17-18A, 17-19 and 17-20 of Orleans Parish; St. Tammany Parish and  
24 Precincts 122, 122A, 122B, 124, 124A, 143, 143A, 145, 147 and 151 of Tangipahoa  
25 Parish.

26 (2) District 2 is composed of Precincts 1-1, 1-2, 2-1, 2-2, 2-5, 4-1, 4-2, 4-3,  
27 5-1, 5-5, 6-1, 6-2, 6-3 and 7-1 of Assumption Parish; Precincts 57, 104, 108, 115,  
28 131, 133, 150, 151, 152, 153, 154, 155, 156, 157A, 157B, 171, 179B, 180, 181,  
29 185B, 187, 188, 191, 195, 196, 197A, 197B, 200, 201, 205, 210, 211, 212, 213A,  
30 213B, 213C, 214A, 214B, 215, 216A, 216B, 216C, 217, 225, 232A, 232B, 1-G, 2-G,  
31 6-G, 7-G, 13-KB, 15-K, 21-K, 22-K, 23-K, 24-K, 26-K, 30-K, 31-K, 33-K, 1-W and  
32 2-W of Jefferson Parish; Precincts 1-1, 1-2, 1-5, 1-6, 2-1, 2-2, 2-4, 2-6, 2-7, 3-1, 3-8,  
33 3-9, 3-12, 3-14, 3-15, 3-18, 3-19, 4-2, 4-3, 4-5, 4-6, 5-1, 5-2, 5-3, 5-5, 5-7, 5-8, 5-9,  
34 5-10, 5-11, 5-12, 5-13, 6-1, 6-2, 6-4, 6-6, 6-7, 6-8, 6-9, 7-1, 7-2, 7-4, 7-5, 7-6, 7-7,  
35 7-8, 7-9A, 7-10, 7-11, 7-12, 7-13, 7-14, 7-15, 7-16, 7-17, 7-18, 7-19, 7-20, 7-21,  
36 7-23, 7-24, 7-25, 7-25A, 7-26, 7-27, 7-27B, 7-28, 7-28A, 7-29, 7-30, 7-32, 7-33,  
37 7-35, 7-37, 7-37A, 7-40, 8-1, 8-2, 8-4, 8-6, 8-7, 8-8, 8-9, 8-12, 8-13, 8-14, 8-15,  
38 8-19, 8-20, 8-21, 8-22, 8-23, 8-24, 8-25, 8-26, 8-27, 8-28, 8-30, 9-1, 9-3, 9-4, 9-5,  
39 9-6, 9-7, 9-8, 9-9, 9-10, 9-11, 9-12, 9-13, 9-14, 9-15, 9-16, 9-17, 9-19, 9-21, 9-23,  
40 9-25, 9-26, 9-28, 9-28C, 9-29, 9-30, 9-30A, 9-31, 9-31A, 9-31B, 9-31D, 9-32, 9-33,  
41 9-34A, 9-35, 9-35A, 9-36, 9-36B, 9-37, 9-38, 9-38A, 9-39, 9-39B, 9-40, 9-40A,  
42 9-40C, 9-41, 9-41A, 9-41B, 9-41C, 9-41D, 9-42, 9-42C, 9-43A, 9-43B, 9-43C,  
43 9-43E, 9-43F, 9-43G, 9-43H, 9-43I, 9-43J, 9-43K, 9-43L, 9-43M, 9-43N, 9-44,  
44 9-44A, 9-44B, 9-44D, 9-44E, 9-44F, 9-44G, 9-44I, 9-44J, 9-44L, 9-44M, 9-44N,  
45 9-44O, 9-44P, 9-44Q, 9-45, 9-45A, 10-3, 10-6, 10-7, 10-8, 10-9, 10-11, 10-12,  
46 10-13, 10-14, 11-2, 11-3, 11-4, 11-5, 11-8, 11-9, 11-10, 11-11, 11-12, 11-13, 11-14,

1 11-17, 12-1, 12-2, 12-3, 12-4, 12-5, 12-6, 12-7, 12-8, 12-9, 12-10, 12-11, 12-12,  
 2 12-13, 12-14, 12-16, 12-17, 12-19, 13-1, 13-2, 13-3, 13-5, 13-11, 13-12, 13-13,  
 3 13-14, 13-15, 13-16, 14-23, 14-24A, 14-25, 14-26, 15-1, 15-2, 15-3, 15-5, 15-6,  
 4 15-8, 15-9, 15-10, 15-11, 15-12, 15-12A, 15-13, 15-13A, 15-13B, 15-14, 15-14A,  
 5 15-14B, 15-14C, 15-14D, 15-14E, 15-14F, 15-14G, 15-15, 15-15A, 15-15B, 15-16,  
 6 15-17, 15-17A, 15-17B, 15-18, 15-18A, 15-18B, 15-18C, 15-18D, 15-18E, 15-18F,  
 7 15-19, 15-19A, 15-19B, 15-19C, 16-3, 16-4, 16-5, 16-6, 16-7, 16-8, 16-9, 17-2, 17-3,  
 8 17-4, 17-5, 17-6, 17-7, 17-8, 17-9, 17-10, 17-11, 17-12, 17-13, 17-13A, 17-14, 17-15  
 9 and 17-16 of Orleans Parish; St. Charles Parish; St. James Parish and St. John the  
 10 Baptist Parish.

11 (3) District 3 is composed of Precincts 2-3, 2-4, 3-1, 3-2, 5-2, 5-3, 7-2, 7-3,  
 12 8-1 and 9-1 of Assumption Parish; Iberia Parish; Precincts 4, 5, 25, 26 and 27 of  
 13 Iberville Parish; Precincts 172, 173, 174, 175, 176, 177, 178, 179A, 182, 183, 184,  
 14 185A, 189, 190, 192, 193A, 193B, 194A, 194B, 198, 199, 202, 203, 204, 226, 227,  
 15 228, 229, 230, 231, 234, 235, 236, 237, 238A, 238B, 246, 247, 248, 3-G, 4-G, 5-G,  
 16 8-G, 9-G, 10-G, 11-G, 12-G, 13-G, 1-GI, 1-L, 3-W, 4-W, 5-W, 6-W and 7-W of  
 17 Jefferson Parish; Lafourche Parish; Plaquemines Parish; St. Bernard Parish; Precincts  
 18 7, 7A, 13, 14, 15, 16, 17, 29, 30, 31, 39 and 40 of St. Landry Parish; Precincts 1, 2,  
 19 3, 4, 5, 6, 7, 8, 9, 10, 11, 12, 13, 14, 15, 16, 20, 21, 22, 24, 25, 27, 28 and 29 of St.  
 20 Martin Parish; St. Mary Parish and Terrebonne Parish.

21 (4) District 4 is composed of Allen Parish; Bienville Parish; Bossier Parish;  
 22 Caddo Parish; De Soto Parish; Natchitoches Parish; Red River Parish; Sabine Parish;  
 23 Vernon Parish; Webster Parish and Winn Parish.

24 (5) District 5 is composed of Avoyelles Parish; Caldwell Parish; Catahoula  
 25 Parish; Claiborne Parish; Concordia Parish; East Carroll Parish; Franklin Parish;  
 26 Grant Parish; Jackson Parish; La Salle Parish; Lincoln Parish; Madison Parish;  
 27 Morehouse Parish; Ouachita Parish; Rapides Parish; Richland Parish; Tensas Parish;  
 28 Union Parish and West Carroll Parish.

29 (6) District 6 is composed of Precincts 1, 2, 3, 4, 5, 6, 7, 8, 9, 10, 11, 12, 13,  
 30 14, 15, 16, 17, 18, 20, 21, 22, 23, 24, 25, 26, 27, 31, 32, 33, 34, 35, 40, 41, 43, 58, 61,  
 31 62, 63, 64, 66, 71, 72, 73, 76, 77 and 78 of Ascension Parish; Precincts 1-7, 1-8, 1-9,  
 32 1-12, 1-33, 1-34, 1-35, 1-39, 1-40, 1-41, 1-42, 1-43, 1-44, 1-46, 1-47, 1-48, 1-49,  
 33 1-52, 1-53, 1-55, 1-56, 1-57, 1-60, 1-64, 1-65, 1-69, 1-72, 1-74, 1-75, 1-76, 1-79,  
 34 1-80, 1-89, 1-90, 1-98, 1-99, 1-103, 1-105, 2-5, 2-6, 2-7, 2-8, 2-14, 2-18, 2-21, 2-26,  
 35 2-28, 2-29, 2-32, 2-33, 2-34, 2-35, 2-36, 2-37, 3-1, 3-2, 3-3, 3-4, 3-6, 3-7, 3-9, 3-10,  
 36 3-11, 3-13, 3-14, 3-15, 3-16, 3-17, 3-18, 3-19, 3-21, 3-22, 3-25, 3-26, 3-27, 3-28,  
 37 3-29, 3-30, 3-31, 3-32, 3-33, 3-34, 3-35, 3-36, 3-37, 3-38, 3-39, 3-40, 3-41, 3-43,  
 38 3-45, 3-46, 3-47, 3-48, 3-49, 3-51, 3-52, 3-53, 3-56, 3-58, 3-59, 3-60, 3-61, 3-62,  
 39 3-63, 3-64, 3-66, 3-67, 3-68, 3-70, 3-71 and 3-72 of East Baton Rouge Parish;  
 40 Livingston Parish and Precincts 27, 28, 33, 40, 40A, 41, 42, 42A, 43, 44, 45, 45A,  
 41 46, 47, 48, 49, 70, 70A, 71, 72, 72A, 73, 74, 112, 114, 116, 117, 118, 119, 120,  
 42 120A, 120B, 121, 121A, 123, 125, 127, 127A, 129, 129A, 133, 133A, 137, 137A,  
 43 137B, 137C, 137D, 139, 141, 141A, 149 and 149A of Tangipahoa Parish.

44 (7) District 7 is composed of Acadia Parish; Beauregard Parish; Calcasieu  
 45 Parish; Cameron Parish; Jefferson Davis Parish; Precincts 1, 2, 3, 6, 8, 12, 26, 27, 28,  
 46 29, 30, 31, 32, 33, 34, 35, 36, 37, 38, 39, 40, 41, 42, 43, 44, 45, 46, 47, 48, 49, 65, 66,  
 47 67, 69, 70, 71, 72, 73, 74, 75, 76, 77, 78, 79, 80, 81, 82, 83, 84, 85, 86, 87, 88, 89, 90,  
 48 91, 92, 93, 94, 95, 96, 97, 98, 99, 100, 101, 102, 103, 104, 105, 106, 107, 108, 109,  
 49 110, 111, 114, 115, 116, 117, 118, 119, 120, 121, 122, 123, 124, 125, 126, 127 and  
 50 128 of Lafayette Parish; Precincts 41, 42 and 43 of St. Landry Parish and Vermilion  
 51 Parish.

52 (8) District 8 is composed of Precincts 28, 30, 36, 37, 39, 42, 44, 45, 47, 48,  
 53 50, 51, 52, 53, 54, 55, 57 and 65 of Ascension Parish; Precincts 1-1, 1-2, 1-3, 1-4,  
 54 1-5, 1-6, 1-10, 1-11, 1-13, 1-14, 1-15, 1-16, 1-17, 1-18, 1-19, 1-20, 1-21, 1-22, 1-23,  
 55 1-24, 1-25, 1-26, 1-27, 1-28, 1-29, 1-30, 1-31, 1-32, 1-36, 1-37, 1-38, 1-45, 1-50,  
 56 1-51, 1-54, 1-58, 1-59, 1-61, 1-62, 1-63, 1-66, 1-67, 1-68, 1-70, 1-71, 1-73, 1-77,  
 57 1-78, 1-81, 1-82, 1-83, 1-84, 1-85, 1-86, 1-87, 1-88, 1-91, 1-92, 1-93, 1-94, 1-95,  
 58 1-97, 1-100, 1-101, 1-102, 1-104, 1-107, 2-1, 2-2, 2-3, 2-4, 2-9, 2-10, 2-11, 2-12,  
 59 2-13, 2-15, 2-16, 2-17, 2-19, 2-20, 2-22, 2-23, 2-24, 2-25, 2-27, 2-30, 2-31, 3-5, 3-8,  
 60 3-12, 3-20, 3-23, 3-24, 3-44, 3-50, 3-54, 3-55, 3-57, 3-65 and 3-69 of East Baton  
 61 Rouge Parish; East Feliciana Parish; Evangeline Parish; Precincts 1, 3, 6, 7, 9, 10,

1 11, 12, 13, 13C, 14, 14A, 15, 15B, 16, 17, 18, 19, 20, 21, 22, 23, 24, 28, 29, 31 and  
2 32 of Iberville Parish; Precincts 4, 5, 7, 9, 10, 11, 13, 14, 15, 16, 17, 18, 19, 20, 21,  
3 22, 23, 24, 25, 51, 52, 53, 54, 55, 56, 57, 58, 59, 60, 61, 62, 63, 64, 68, 112 and 113  
4 of Lafayette Parish; Pointe Coupee Parish; St. Helena Parish; Precincts 1, 2, 3, 4, 5,  
5 6, 8, 9, 10, 11, 12, 18, 19, 20, 21, 22, 23, 24, 25, 26, 27, 28, 32, 33, 34, 35, 36, 37, 38,  
6 44, 45, 46, 47, 48, 49, 50, 51 and 52 of St. Landry Parish; Precincts 17, 18, 19, 23  
7 and 26 of St. Martin Parish; Precincts 1, 2, 6, 11, 15, 16, 17, 18, 26, 101, 102, 104,  
8 104A, 105, 106, 106A, 107, 108, 109, 110, 111A and 115B of Tangipahoa Parish;  
9 Washington Parish; West Baton Rouge Parish and West Feliciana Parish."

# Plan Statistics

Plan: SFA HB3-165

<u>Districts:</u>	<u># of Members</u>	<u>Actual Population</u>	<u>Ideal Population</u>	<u>Absolute Deviation</u>	<u>Relative Deviation</u>
District 1	1	571,143	582,219	-11,076	-1.902%
District 2	1	562,952	582,219	-19,267	-3.309%
District 3	1	567,215	582,219	-15,004	-2.577%
District 4	1	595,899	582,219	13,680	2.350%
District 5	1	599,806	582,219	17,587	3.021%
District 6	1	589,781	582,219	7,562	1.299%
District 7	1	598,886	582,219	16,667	2.863%
District 8	1	572,075	582,219	-10,144	-1.742%

---

Grand Total:	8	4,657,757	4,657,752
--------------	---	-----------	-----------

---

Ideal Population Per Member:	582219			
Number of Districts for Plan Type:	8			
Range of District Populations:	562,952	to	599,806	
Absolute Mean Deviation:	4,607			
Absolute Range:	-19,267	to	17,587	
Absolute Overall Range:	36,854			
Relative Mean Deviation:	2.38%			
Relative Range:	-3.31%	to	3.02%	
Relative Overall Range:	6.33%			

<b><i>Ideal - Actual:</i></b>	<b><i>-5</i></b>
<b><i>Remainder:</i></b>	<b><i>5</i></b>
<b><i>Unassigned Population:</i></b>	<b><i>0</i></b>

# Total Population

Plan: SFA HB3-165

	Total Population	Total White	Total Black	Total Asian	Total American Indian	Total Other	Total Hispanic	VAP Total	VAP White	VAP Black	VAP Asian	VAP American Indian	VAP Other	VAP Hispanic Total
District 1	571,143	404,609	76,197	19,659	10,735	59,943	74,931	448,483	327,765	54,722	14,571	8,024	43,401	53,872
	100.000%	70.842%	13.341%	3.442%	1.880%	10.495%	13.119%	100.000%	73.083%	12.202%	3.249%	1.789%	9.677%	12.012%
District 2	562,952	165,208	336,784	17,237	5,911	37,812	49,465	437,158	140,046	251,713	13,832	4,587	26,980	34,447
	100.000%	29.347%	59.825%	3.062%	1.050%	6.717%	8.787%	100.000%	32.036%	57.579%	3.164%	1.049%	6.172%	7.880%
District 3	567,215	351,651	140,956	15,440	20,244	38,924	47,767	430,574	279,978	98,613	11,459	13,958	26,566	31,833
	100.000%	61.996%	24.851%	2.722%	3.569%	6.862%	8.421%	100.000%	65.024%	22.903%	2.661%	3.242%	6.170%	7.393%
District 4	595,899	328,078	218,627	10,180	15,312	23,702	29,758	454,353	261,379	157,309	7,419	11,494	16,752	20,498
	100.000%	55.056%	36.689%	1.708%	2.570%	3.978%	4.994%	100.000%	57.528%	34.623%	1.633%	2.530%	3.687%	4.511%
District 5	599,806	353,883	209,371	7,914	10,629	18,009	21,866	460,459	281,870	150,887	6,088	8,074	13,540	16,086
	100.000%	59.000%	34.906%	1.319%	1.772%	3.002%	3.646%	100.000%	61.215%	32.769%	1.322%	1.753%	2.941%	3.493%
District 6	589,781	408,951	120,078	16,465	9,907	34,380	39,499	450,189	322,728	84,338	12,027	7,490	23,606	26,478
	100.000%	69.339%	20.360%	2.792%	1.680%	5.829%	6.697%	100.000%	71.687%	18.734%	2.672%	1.664%	5.244%	5.882%
District 7	598,886	429,336	121,677	13,057	9,168	25,648	30,582	451,871	333,529	84,532	9,346	6,786	17,678	20,491
	100.000%	71.689%	20.317%	2.180%	1.531%	4.283%	5.106%	100.000%	73.811%	18.707%	2.068%	1.502%	3.912%	4.535%
District 8	572,075	215,936	319,429	7,336	5,154	24,220	28,681	437,461	177,216	233,655	5,674	3,827	17,089	19,957
	100.000%	37.746%	55.837%	1.282%	0.901%	4.234%	5.014%	100.000%	40.510%	53.412%	1.297%	0.875%	3.906%	4.562%
Grand Total	4,657,757	2,657,652	1,543,119	107,288	87,060	262,638	322,549	3,570,548	2,124,511	1,115,769	80,416	64,240	185,612	223,662
	100.000%	57.059%	33.130%	2.303%	1.869%	5.639%	6.925%	100.000%	59.501%	31.249%	2.252%	1.799%	5.198%	6.264%

# Voter Registration

Plan: SFA HB3-165

	Reg Total Dec 2021	Reg White Dec 2021	Reg Black Dec 2021	Reg Other Dec 2021	Reg Dem Total Dec 2021	Reg Rep Total Dec 2021	Reg Other Total Dec 2021
District 1	370,294	298,649	36,740	34,905	98,422	160,052	111,820
	82.566%	80.652%	9.922%	9.426%	26.579%	43.223%	30.198%
District 2	366,751	117,551	219,317	29,883	232,443	43,247	91,061
	83.894%	32.052%	59.800%	8.148%	63.379%	11.792%	24.829%
District 3	343,268	243,310	76,799	23,159	124,875	120,772	97,621
	79.723%	70.880%	22.373%	6.747%	36.378%	35.183%	28.439%
District 4	359,288	216,736	125,499	17,053	142,307	126,624	90,357
	79.077%	60.324%	34.930%	4.746%	39.608%	35.243%	25.149%
District 5	374,436	241,241	121,922	11,273	143,805	140,147	90,484
	81.318%	64.428%	32.562%	3.011%	38.406%	37.429%	24.165%
District 6	360,168	281,160	59,783	19,225	103,202	156,101	100,865
	80.004%	78.064%	16.599%	5.338%	28.654%	43.341%	28.005%
District 7	364,965	286,565	62,323	16,077	113,752	149,810	101,403
	80.768%	78.518%	17.076%	4.405%	31.168%	41.048%	27.784%
District 8	355,176	142,777	200,365	12,034	202,198	72,027	80,951
	81.190%	40.199%	56.413%	3.388%	56.929%	20.279%	22.792%
Grand Total	2,894,346	1,827,989	902,748	163,609	1,161,004	968,780	764,562

# Splits

Plan: SFA HB3-165

	Total Population	Total White	Total Black	Total Asian	Total American Indian	Total Other	VAP Total	VAP White	VAP Black	VAP Asian	VAP American Indian	VAP Other	Reg Total Dec 2021	Reg White Dec 2021	Reg Black Dec 2021	Reg Other Dec 2021
District 1																
*Jefferson	230,480	147,956	30,095	11,346	3,919	37,164	184,940	124,166	22,151	8,566	2,978	27,079	141,068	110,357	12,281	18,430
*Orleans	57,113	45,328	4,810	2,308	647	4,020	47,153	37,718	4,065	1,781	516	3,073	39,113	32,920	2,145	4,048
St. Tammany	264,570	196,641	38,643	5,774	5,660	17,852	202,228	154,621	26,761	4,075	4,161	12,610	178,779	145,724	21,142	11,913
*Tangipahoa	18,980	14,684	2,649	231	509	907	14,162	11,260	1,745	149	369	639	11,334	9,648	1,172	514
District 1	571,143	404,609	76,197	19,659	10,735	59,943	448,483	327,765	54,722	14,571	8,024	43,401	370,294	298,649	36,740	34,905
	100.000%	70.842%	13.341%	3.442%	1.880%	10.495%	100.000%	73.083%	12.202%	3.249%	1.789%	9.677%	82.566%	80.652%	9.922%	9.426%
District 2																
*Assumption	9,701	4,158	5,201	38	76	228	7,552	3,318	3,977	19	60	178	7,034	2,932	4,003	99
*Jefferson	111,149	22,516	68,538	5,351	1,344	13,400	83,014	18,535	50,109	4,191	1,014	9,165	63,722	13,771	42,402	7,549
*Orleans	326,884	81,134	214,159	10,548	3,019	18,024	259,043	72,534	162,003	8,739	2,432	13,335	217,131	59,066	139,380	18,685
St. Charles	52,549	33,550	13,928	837	925	3,309	39,541	26,154	9,890	529	667	2,301	34,985	24,309	8,797	1,879
St. James	20,192	9,973	9,762	60	82	315	15,505	7,883	7,297	31	64	230	14,966	7,254	7,501	211
St. John the Baptist	42,477	13,877	25,196	403	465	2,536	32,503	11,622	18,437	323	350	1,771	28,913	10,219	17,234	1,460
District 2	562,952	165,208	336,784	17,237	5,911	37,812	437,158	140,046	251,713	13,832	4,587	26,980	366,751	117,551	219,317	29,883
	100.000%	29.347%	59.825%	3.062%	1.050%	6.717%	100.000%	32.036%	57.579%	3.164%	1.049%	6.172%	83.894%	32.052%	59.800%	8.148%
District 3																
*Assumption	11,338	9,564	1,019	58	182	515	9,064	7,827	730	38	137	332	7,405	6,768	507	130
Iberia	69,929	39,206	24,556	2,123	794	3,250	52,791	31,295	17,069	1,562	581	2,284	44,526	28,287	14,352	1,887
*Iberville	4,213	3,921	118	9	67	98	3,439	3,226	72	8	59	74	3,023	2,905	52	66
*Jefferson	99,152	50,463	27,584	6,327	2,423	12,355	76,700	41,434	19,915	4,935	1,843	8,573	58,311	35,488	14,893	7,930
Lafourche	97,557	71,710	15,855	1,025	4,224	4,743	74,619	56,838	11,077	738	2,777	3,189	58,278	48,467	7,164	2,647
Plaquemines	23,515	14,287	5,428	1,317	697	1,786	17,334	10,856	3,857	925	500	1,196	13,908	9,513	3,134	1,261
St. Bernard	43,764	24,497	12,309	1,381	947	4,630	31,775	18,992	7,944	982	688	3,169	25,653	18,233	5,497	1,923
*St. Landry	16,838	12,917	3,403	87	160	271	12,761	10,013	2,416	59	104	169	11,619	9,224	2,121	274
*St. Martin	41,923	28,203	11,546	535	443	1,196	32,065	22,272	8,217	380	346	850	28,615	20,318	7,622	675
St. Mary	49,406	26,949	15,991	835	1,670	3,961	37,521	21,594	11,520	593	1,173	2,641	30,210	18,712	9,891	1,607
Terrebonne	109,580	69,934	23,147	1,743	8,637	6,119	82,505	55,631	15,796	1,239	5,750	4,089	61,720	45,395	11,566	4,759
District 3	567,215	351,651	140,956	15,440	20,244	38,924	430,574	279,978	98,613	11,459	13,958	26,566	343,268	243,310	76,799	23,159
	100.000%	61.996%	24.851%	2.722%	3.569%	6.862%	100.000%	65.024%	22.903%	2.661%	3.242%	6.170%	79.723%	70.880%	22.373%	6.747%
District 4																
Allen	22,750	16,327	4,490	246	947	740	17,510	12,751	3,275	182	646	656	12,201	9,478	2,217	506
Bienville	12,981	6,950	5,600	57	207	167	10,073	5,486	4,284	30	162	111	8,847	4,843	3,917	87
Bossier	128,746	81,052	32,551	3,492	3,273	8,378	95,876	62,931	22,440	2,448	2,477	5,580	69,743	50,861	14,838	4,044
Caddo	237,848	103,457	119,304	4,034	3,840	7,213	182,407	85,059	86,359	3,008	2,958	5,023	151,296	73,113	71,249	6,934
De Soto	26,812	15,284	9,973	117	740	698	20,440	11,909	7,425	86	557	463	18,713	11,330	6,810	573

# Splits

Plan: SFA HB3-165

	Total Population	Total White	Total Black	Total Asian	Total American Indian	Total Other	VAP Total	VAP White	VAP Black	VAP Asian	VAP American Indian	VAP Other	Reg Total Dec 2021	Reg White Dec 2021	Reg Black Dec 2021	Reg Other Dec 2021
District 4																
Natchitoches	37,515	19,361	15,725	255	861	1,313	29,349	16,010	11,415	198	683	1,043	23,107	12,850	9,224	1,033
Red River	7,620	4,195	3,106	25	171	123	5,714	3,338	2,164	3	116	93	5,631	3,130	2,418	83
Sabine	22,155	15,036	3,861	94	2,723	441	17,064	12,054	2,655	66	1,970	319	14,547	11,023	2,184	1,340
Vernon	48,750	35,087	7,611	1,442	1,600	3,010	36,261	26,765	5,133	1,074	1,160	2,129	24,060	19,182	3,011	1,867
Webster	36,967	22,735	12,679	208	687	658	28,753	18,144	9,464	154	558	433	22,737	14,938	7,339	460
Winn	13,755	8,594	3,727	210	263	961	10,906	6,932	2,695	170	207	902	8,406	5,988	2,292	126
District 4	595,899	328,078	218,627	10,180	15,312	23,702	454,353	261,379	157,309	7,419	11,494	16,752	359,288	216,736	125,499	17,053
	100.000%	55.056%	36.689%	1.708%	2.570%	3.978%	100.000%	57.528%	34.623%	1.633%	2.530%	3.687%	79.077%	60.324%	34.930%	4.746%
District 5																
Avoyelles	39,693	25,625	11,678	434	767	1,189	30,578	20,269	8,311	379	570	1,049	23,426	16,534	6,294	598
Caldwell	9,645	7,646	1,632	51	150	166	7,478	5,969	1,224	46	116	123	6,031	5,124	818	89
Catahoula	8,906	5,776	2,395	46	119	570	6,951	4,557	1,736	33	87	538	6,467	4,639	1,770	58
Claiborne	14,170	7,263	6,360	88	185	274	11,507	6,258	4,824	55	140	230	8,598	4,632	3,820	146
Concordia	18,687	10,275	7,725	122	233	332	14,217	8,108	5,613	100	167	229	11,964	7,222	4,540	202
East Carroll	7,459	2,054	5,272	29	43	61	5,901	1,773	4,043	19	27	39	4,709	1,306	3,359	44
Franklin	19,774	12,492	6,802	70	205	205	15,028	9,901	4,779	44	153	151	13,159	9,015	4,034	110
Grant	22,169	17,709	3,335	133	644	348	17,527	13,964	2,717	97	507	242	12,688	11,174	1,176	338
Jackson	15,031	9,967	4,166	175	255	468	11,783	7,967	3,125	140	174	377	9,449	6,647	2,610	192
La Salle	14,791	11,348	1,422	283	372	1,366	11,563	8,636	1,065	264	271	1,327	8,792	7,978	637	177
Lincoln	48,396	26,034	19,364	892	662	1,444	38,655	21,306	15,119	744	526	960	25,649	15,672	9,016	961
Madison	10,017	3,475	6,363	20	59	100	7,435	2,906	4,391	9	48	81	7,278	2,494	4,674	110
Morehouse	25,629	12,281	12,484	160	370	334	20,062	10,095	9,300	117	279	271	16,922	8,505	8,131	286
Ouachita	160,368	88,545	61,217	2,788	2,661	5,157	120,200	69,974	42,290	2,118	2,059	3,759	99,752	60,515	35,658	3,579
Rapides	130,023	77,510	42,592	2,428	3,102	4,391	98,792	61,373	30,205	1,786	2,334	3,094	80,176	52,832	23,775	3,569
Richland	20,043	11,785	7,603	83	258	314	15,383	9,338	5,546	66	203	230	13,662	8,470	4,961	231
Tensas	4,147	1,744	2,312	23	26	42	3,235	1,446	1,728	12	23	26	3,455	1,503	1,917	35
Union	21,107	14,460	5,224	62	338	1,023	16,632	11,807	3,861	39	254	671	15,221	11,066	3,692	463
West Carroll	9,751	7,894	1,425	27	180	225	7,532	6,223	1,010	20	136	143	7,038	5,913	1,040	85
District 5	599,806	353,883	209,371	7,914	10,629	18,009	460,459	281,870	150,887	6,088	8,074	13,540	374,436	241,241	121,922	11,273
	100.000%	59.000%	34.906%	1.319%	1.772%	3.002%	100.000%	61.215%	32.769%	1.322%	1.753%	2.941%	81.318%	64.428%	32.562%	3.011%
District 6																
*Ascension	103,922	74,920	17,479	2,147	1,810	7,566	75,322	55,982	11,772	1,400	1,263	4,905	65,880	52,557	9,581	3,742
*East Baton Rouge	253,580	161,928	62,349	11,512	3,333	14,458	200,739	133,548	45,301	8,688	2,661	10,541	159,693	116,947	32,281	10,465
Livingston	142,282	116,855	12,658	1,697	3,111	7,961	105,141	88,432	8,136	1,099	2,311	5,163	84,568	76,062	5,425	3,081
*Tangipahoa	89,997	55,248	27,592	1,109	1,653	4,395	68,987	44,766	19,129	840	1,255	2,997	50,027	35,594	12,496	1,937

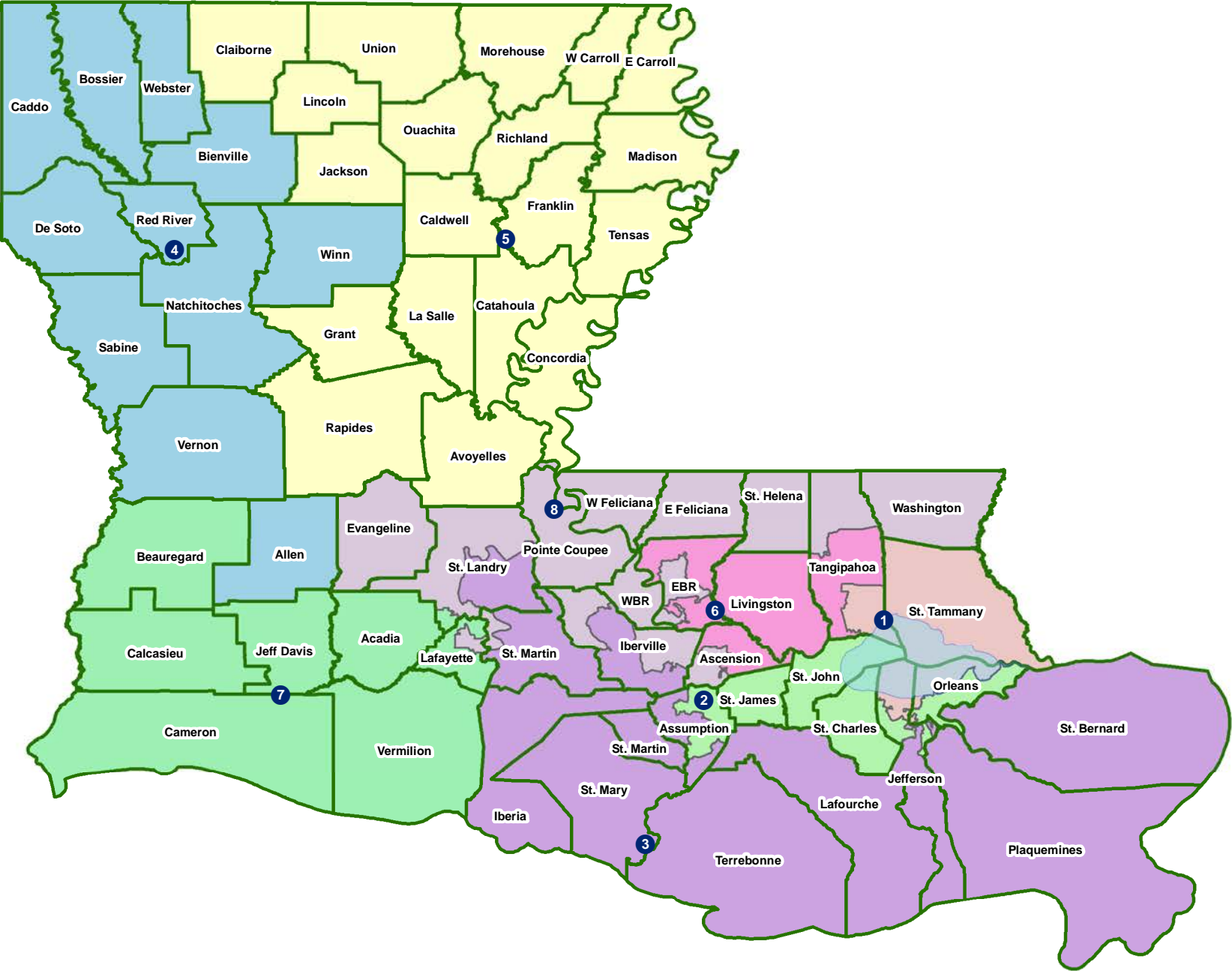


# Splits

Plan: SFA HB3-165

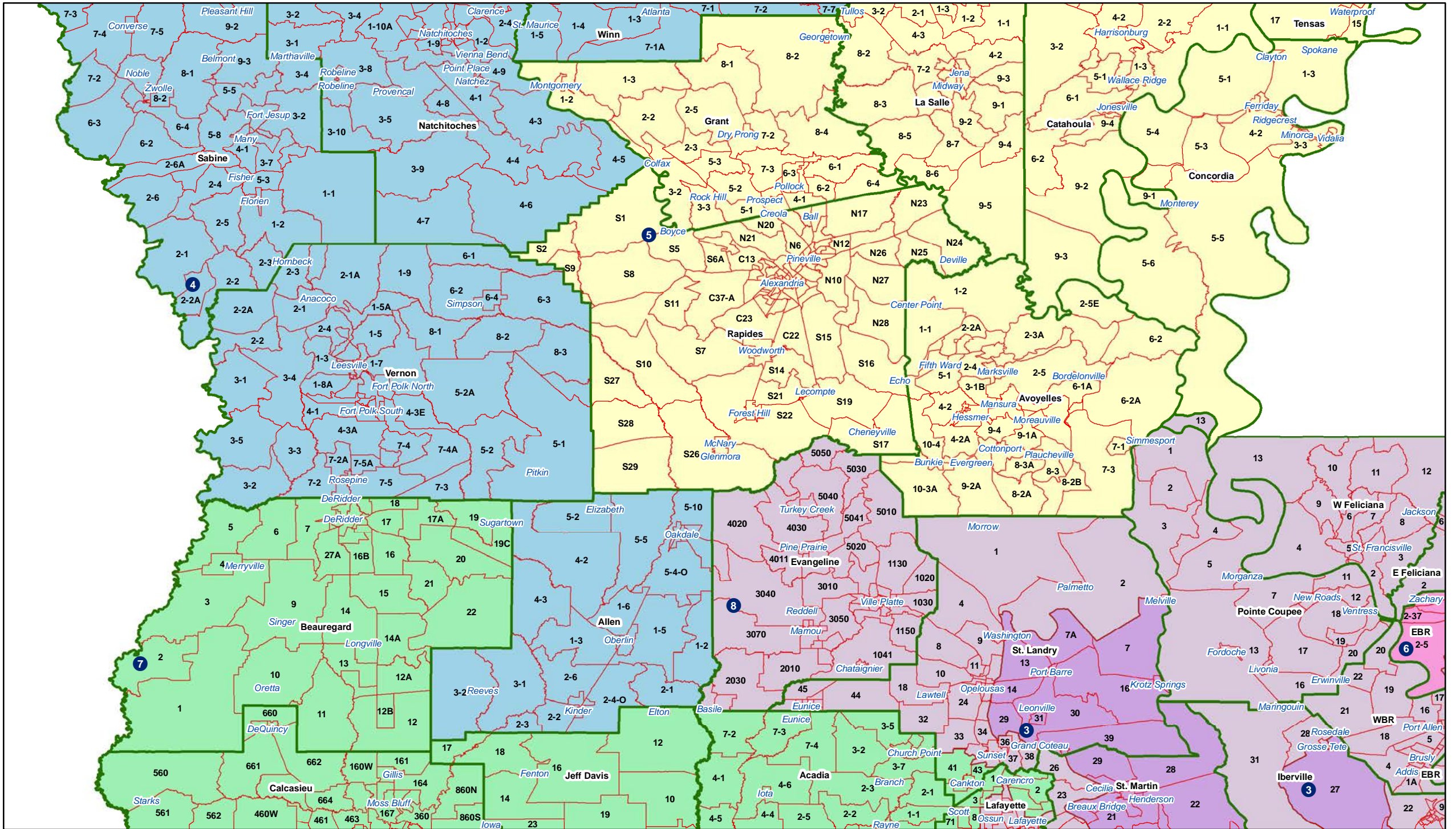
	Total Population	Total White	Total Black	Total Asian	Total American Indian	Total Other	VAP Total	VAP White	VAP Black	VAP Asian	VAP American Indian	VAP Other	Reg Total Dec 2021	Reg White Dec 2021	Reg Black Dec 2021	Reg Other Dec 2021
District 6	589,781	408,951	120,078	16,465	9,907	34,380	450,189	322,728	84,338	12,027	7,490	23,606	360,168	281,160	59,783	19,225
	100.000%	69.339%	20.360%	2.792%	1.680%	5.829%	100.000%	71.687%	18.734%	2.672%	1.664%	5.244%	80.004%	78.064%	16.599%	5.338%
District 7																
Acadia	57,576	44,480	10,864	238	573	1,421	42,943	34,071	7,383	173	400	916	37,678	30,555	6,407	716
Beauregard	36,549	29,529	4,649	402	1,052	917	27,489	22,304	3,495	269	773	648	22,294	18,771	2,369	1,154
Calcasieu	216,785	139,772	59,386	4,702	3,536	9,389	163,166	108,789	41,898	3,359	2,604	6,516	120,511	85,659	29,513	5,339
Cameron	5,617	5,232	125	30	75	155	4,358	4,100	79	23	47	109	4,789	4,610	88	91
Jefferson Davis	32,250	25,066	5,837	183	472	692	24,039	19,121	4,006	111	325	476	20,013	16,350	3,202	461
*Lafayette	188,892	137,649	31,542	6,037	2,776	10,888	144,039	108,453	21,545	4,363	2,102	7,576	120,727	98,255	15,500	6,972
*St. Landry	3,858	3,131	464	18	61	184	2,825	2,328	339	11	47	100	2,184	1,860	250	74
Vermilion	57,359	44,477	8,810	1,447	623	2,002	43,012	34,363	5,787	1,037	488	1,337	36,769	30,505	4,994	1,270
District 7	598,886	429,336	121,677	13,057	9,168	25,648	451,871	333,529	84,532	9,346	6,786	17,678	364,965	286,565	62,323	16,077
	100.000%	71.689%	20.317%	2.180%	1.531%	4.283%	100.000%	73.811%	18.707%	2.068%	1.502%	3.912%	80.768%	78.518%	17.076%	4.405%
District 8																
*Ascension	22,578	6,221	14,737	153	194	1,273	16,635	5,154	10,367	114	127	873	14,037	4,243	9,233	561
*East Baton Rouge	203,201	34,141	151,049	4,913	1,394	11,704	154,873	30,333	111,489	3,911	1,086	8,054	119,571	21,285	92,394	5,892
East Feliciana	19,539	11,516	7,341	91	262	329	16,183	9,740	5,918	61	198	266	13,600	7,959	5,186	455
Evangeline	32,350	21,354	9,235	241	280	1,240	24,408	16,460	6,483	187	217	1,061	20,553	14,566	5,643	344
*Iberville	26,028	10,912	13,612	193	207	1,104	20,647	9,236	10,160	141	162	948	17,439	7,227	9,845	367
*Lafayette	52,861	15,714	33,594	417	434	2,702	39,836	13,155	24,372	301	285	1,723	32,766	10,390	20,981	1,395
Pointe Coupee	20,758	12,395	7,504	107	159	593	16,250	10,108	5,502	91	119	430	14,675	9,320	5,121	234
St. Helena	10,920	4,527	6,031	39	134	189	8,463	3,805	4,371	28	109	150	8,321	3,628	4,565	128
*St. Landry	61,844	27,563	31,969	394	415	1,503	46,225	21,868	22,742	283	300	1,032	40,679	19,009	20,634	1,036
*St. Martin	9,844	5,056	4,375	62	96	255	7,339	4,006	3,076	27	67	163	6,505	3,616	2,759	130
*Tangipahoa	24,180	11,404	11,638	134	292	712	18,342	9,179	8,343	111	203	506	14,895	7,670	6,857	368
Washington	45,463	29,943	13,434	216	736	1,134	34,951	23,743	9,732	154	561	761	27,587	18,835	8,102	650
West Baton Rouge	27,199	14,307	11,170	287	326	1,109	20,526	11,146	8,149	209	219	803	17,141	9,937	6,865	339
West Feliciana	15,310	10,883	3,740	89	225	373	12,783	9,283	2,951	56	174	319	7,407	5,092	2,180	135
District 8	572,075	215,936	319,429	7,336	5,154	24,220	437,461	177,216	233,655	5,674	3,827	17,089	355,176	142,777	200,365	12,034
	100.000%	37.746%	55.837%	1.282%	0.901%	4.234%	100.000%	40.510%	53.412%	1.297%	0.875%	3.906%	81.190%	40.199%	56.413%	3.388%

BESE - SFA HB3-165 - Statewide



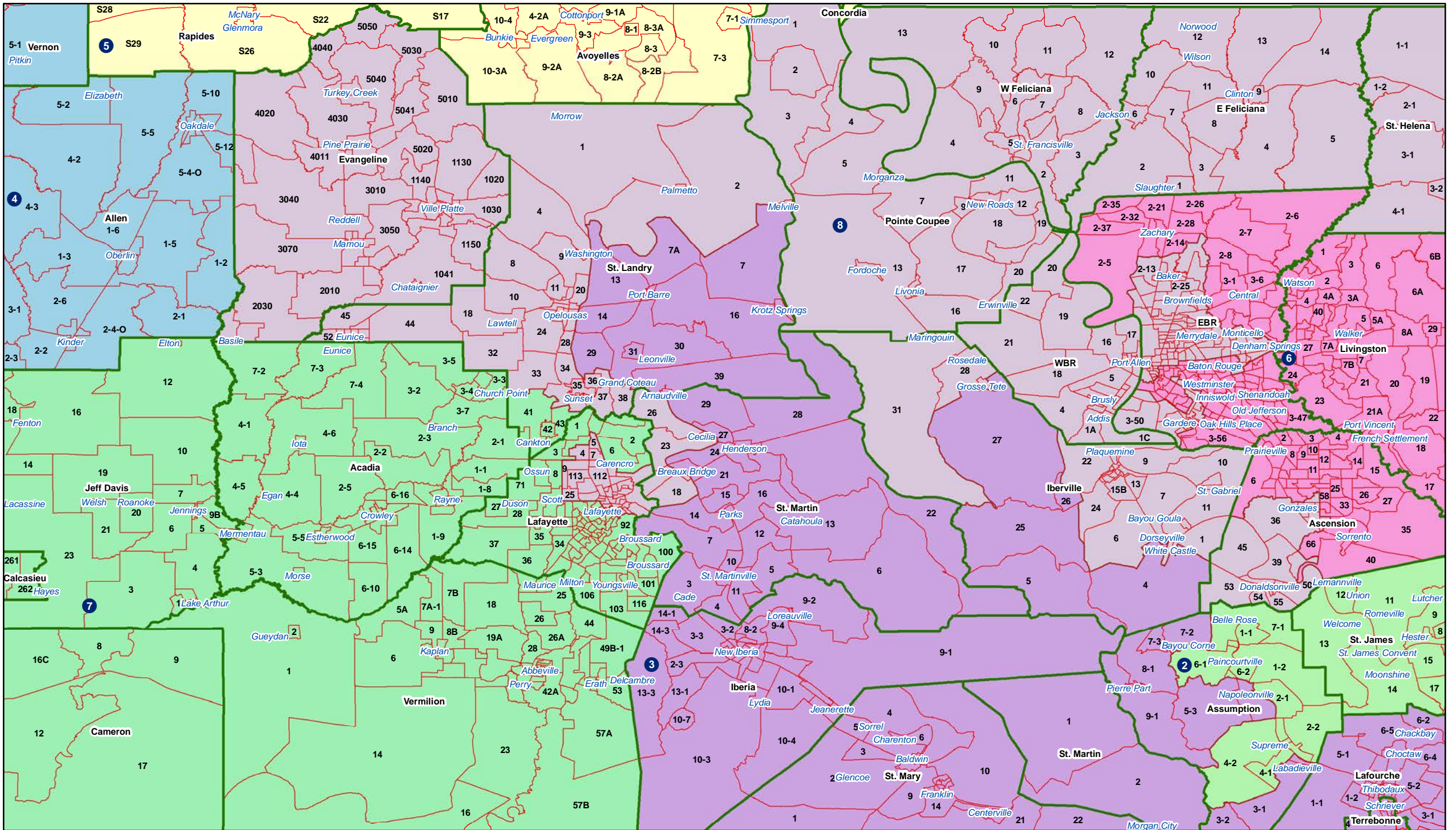


# BESE - SFA HB3-165 - Central



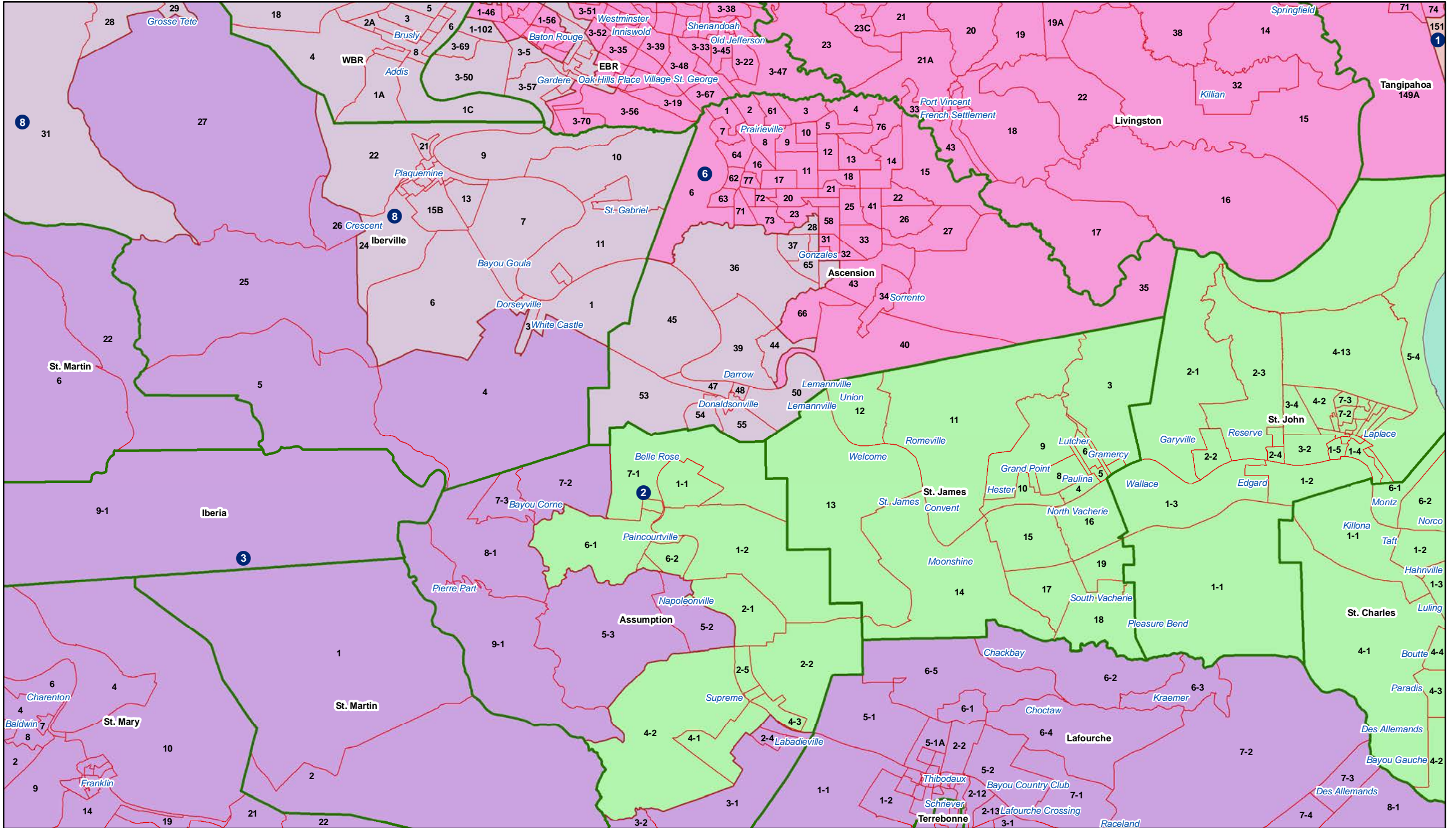


# BESE - SFA HB3-165 - Acadiana



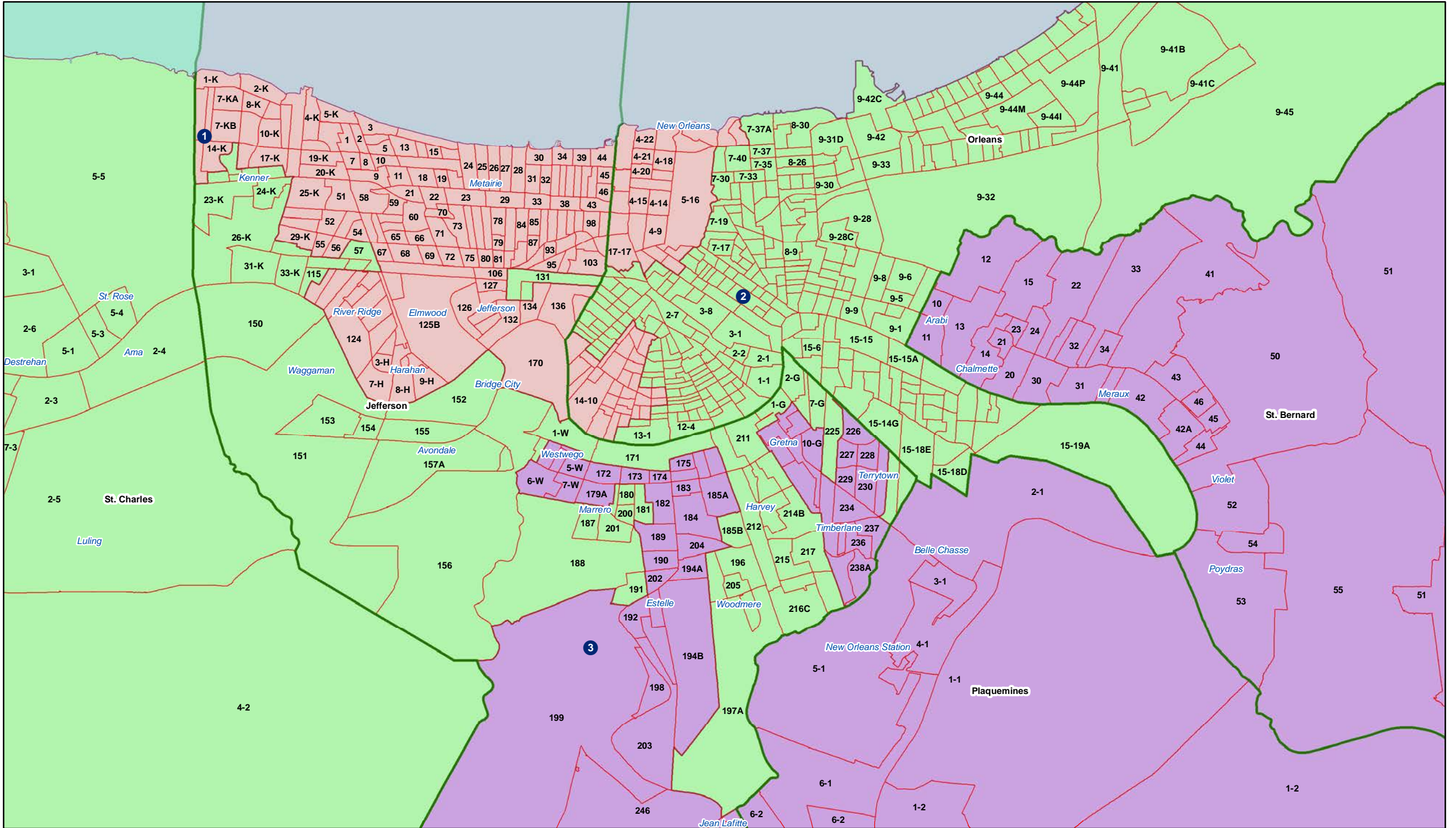


# BESE - SFA HB3-165 - Ascension - Assumption



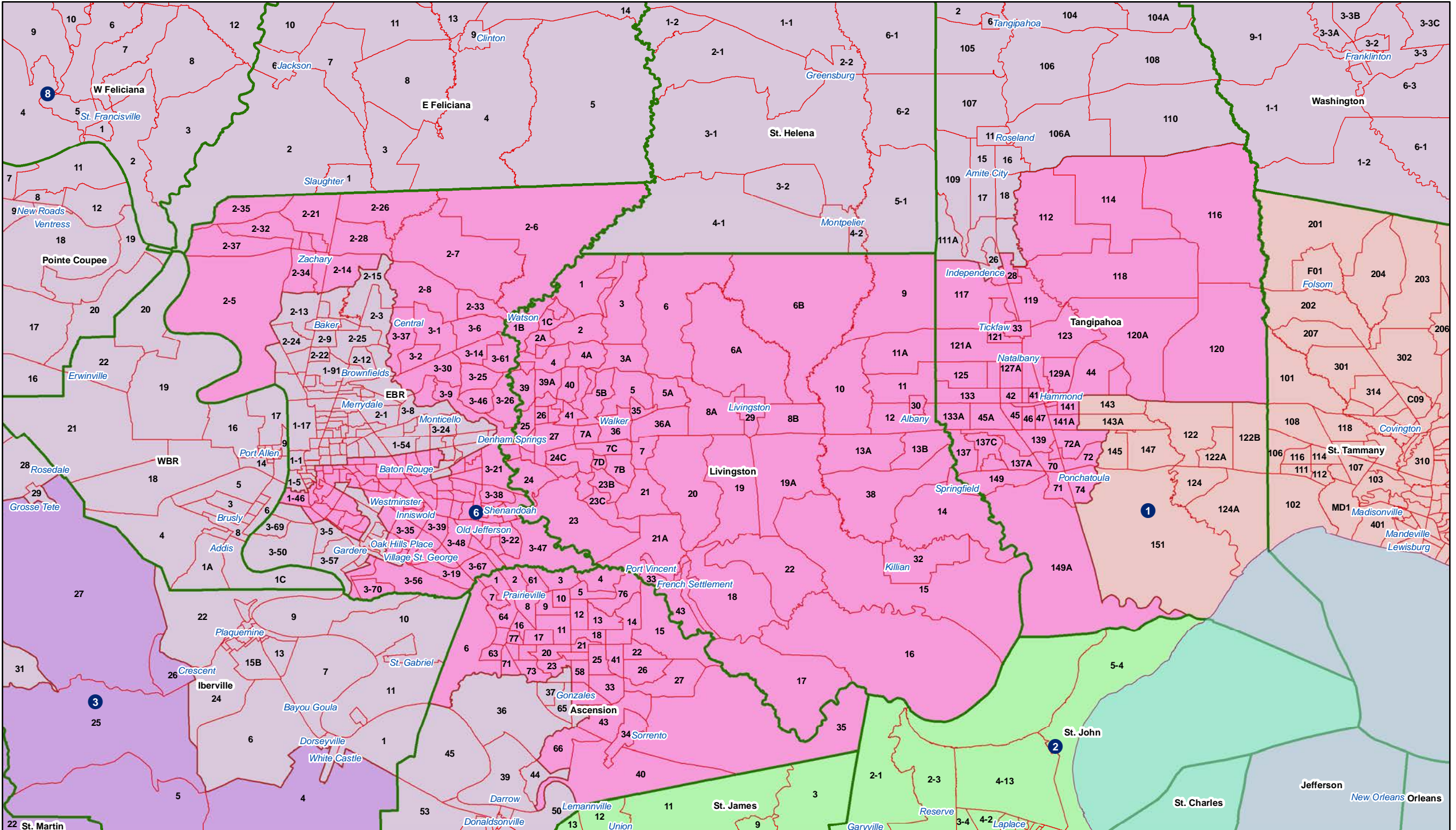


BESE - SFA HB3-165 - Jefferson - Orleans





BESE - SFA HB3-165 - Florida Parishes



8

1

2

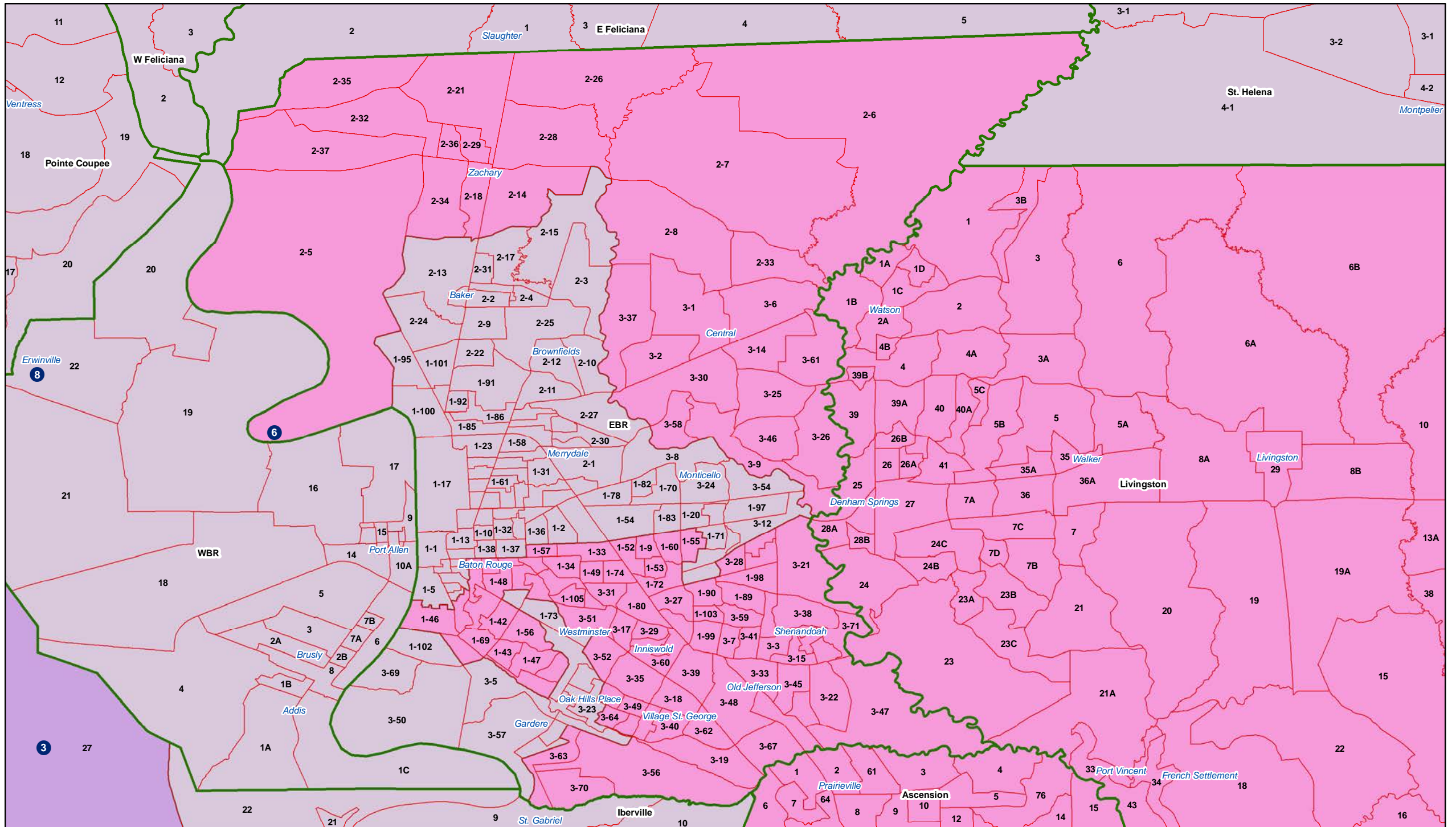
3

6

22



# BESE - SFA HB3-165 - Baton Rouge





# BESE - SFA HB3-165 - Lafayette

