

2022 Second Extraordinary Session

HOUSE BILL NO. 2

BY REPRESENTATIVE SCHEXNAYDER

CONGRESS/DISTRICTS: Provides relative to the districts for elected members of the United States Congress

1 AN ACT

2 To amend and reenact R.S. 18:1276 and to repeal Section 4 and Subsection B of Section 5  
3 of Act No. 5 of the 2022 First Extraordinary Session of the Legislature, relative to  
4 congressional districts; to provide for the redistricting of Louisiana's congressional  
5 districts; to provide with respect to positions and offices, other than congressional,  
6 which are based upon congressional districts; to provide for effectiveness; and to  
7 provide for related matters.

8 Be it enacted by the Legislature of Louisiana:

9 Section 1. R.S. 18:1276 is hereby amended and reenacted to read as follows:

10 §1276. Congressional districts

11 Louisiana shall be divided into six congressional districts, and the qualified  
12 electors of each district shall elect one representative to the United States House of  
13 Representatives. The districts shall be composed as follows:

14 ~~(1) District 1 is composed of Precincts 1, 2, 3, 4, 5, 7, 8, 9, 10, 11, 12, 13, 14,~~  
15 ~~15, 16, 17, 18, 19, 20, 21, 22, 23, 24, 25, 26, 27, 28, 29, 30, 31, 32, 33, 34, 35, 36, 37,~~  
16 ~~38, 39, 40, 41, 42, 43, 44, 45, 46, 51, 52, 53, 54, 55, 56, 57, 58, 59, 60, 61, 62, 63, 64,~~  
17 ~~65, 66, 67, 68, 69, 70, 71, 72, 73, 74, 75, 76, 77, 78, 79, 80, 81, 82, 83, 84, 85, 86, 87,~~  
18 ~~88, 89, 90, 91, 92, 93, 94, 95, 96, 97, 98, 99, 100, 101, 102, 103, 105, 106, 116, 117,~~  
19 ~~118, 119, 120, 121, 122, 123, 124, 125A, 125B, 126, 127, 128, 129, 130, 132, 134,~~  
20 ~~136, 192, 198, 199, 203, 246, 247, 248, 1-GI, 1-II, 2-II, 3-II, 4-II, 5-II, 6-II, 7-II,~~

1 ~~8-H, 9-H, 1-K, 2-K, 3-K, 4-K, 5-K, 6-KA, 6-KB, 7-KA, 7-KB, 8-K, 9-K, 10-K,~~  
2 ~~11-K, 12-K, 13-KA, 14-K, 16-K, 17-K, 18-K, 19-K, 20-K, 25-K, 27-K, 28-K, 29-K,~~  
3 ~~34-K, 35-K, and 1-L of Jefferson Parish; Precincts 3-2, 3-3, 3-6, 4-1, 4-2, 4-3, 4-4,~~  
4 ~~4-5, 4-6, 7-3, 8-1, 9-1, 9-2, 10-1, 10-2, 10-3, 10-4, 10-5, 10-6, 10-7, 10-8, 10-9,~~  
5 ~~10-10, 10-11, 10-12, 10-13, 10-14, 10-15, 10-16, 11-1, and 11-2 of Lafourche Parish;~~  
6 ~~Precincts 3-20, 4-7, 4-8, 4-9, 4-11, 4-14, 4-15, 4-17, 4-17A, 4-18, 4-20, 4-21, 4-22,~~  
7 ~~4-23, 5-15, 5-16, 5-17, 5-18, 7-41, 7-42, 14-2, 14-3, 14-4, 14-7, 14-8, 14-9, 14-10,~~  
8 ~~14-11, 14-12, 14-13A, 14-14, 14-15, 14-16, 14-18A, 14-19, 14-21, 16-2, 16-3, 17-1,~~  
9 ~~17-17, 17-18, 17-18A, 17-19, and 17-20 of Orleans Parish; Plaquemines Parish; St.~~  
10 ~~Bernard Parish; St. Tammany Parish; Precincts 48, 49, 70, 70A, 71, 72, 72A, 73, 74,~~  
11 ~~120, 122, 122A, 122B, 124, 124A, 137A, 141A, 145, 147, 149, 149A, and 151 of~~  
12 ~~Tangipahoa Parish; and Precincts 11, 15, 19, 20, 21, 23, 25, 27, 29, 31, 32, 34, 35,~~  
13 ~~36, 38, 41, 43, 45, 46, 48, 49, 52, 53, 54, 55, 56, 57, 58, 59, 60, 61, 63, 69, 71, 72, 83,~~  
14 ~~85, 88, 89, 90, 110, and 111 of Terrebonne Parish.~~

15 ~~(2) District 2 is composed of Precincts 30, 36, 37, 39, 42, 44, 45, 47, 48, 50,~~  
16 ~~51, 52, 53, 54, 55, 57, and 65 of Ascension Parish; Precincts 1-1, 1-2, 2-2, 4-3, 5-5,~~  
17 ~~6-1, 6-2, 6-3, and 7-1 of Assumption Parish; Precincts 1-2, 1-3, 1-4, 1-5, 1-6, 1-10,~~  
18 ~~1-11, 1-13, 1-14, 1-15, 1-16, 1-17, 1-18, 1-19, 1-21, 1-22, 1-23, 1-24, 1-25, 1-26,~~  
19 ~~1-27, 1-28, 1-29, 1-30, 1-31, 1-32, 1-36, 1-50, 1-51, 1-58, 1-61, 1-62, 1-63, 1-67,~~  
20 ~~1-77, 1-84, 1-85, 1-86, 1-91, 1-92, 1-93, 1-94, 1-95, 1-100, 1-101, 1-104, 2-1, 2-9,~~  
21 ~~2-11, 2-13, 2-16, 2-20, 2-22, 2-23, 2-24, and 2-30 of East Baton Rouge Parish;~~  
22 ~~Precincts 1, 3, 6, 7, 9, 10, 11, 12, 13C, 14, 14A, 15, 16, 17, 18, 19, 20, 21, 22, and~~  
23 ~~23 of Iberville Parish; Precincts 104, 108, 115, 131, 133, 138, 150, 151, 152, 153,~~  
24 ~~154, 155, 156, 157A, 157B, 170, 171, 172, 173, 174, 175, 176, 177, 178, 179A,~~  
25 ~~179B, 180, 181, 182, 183, 184, 185A, 185B, 187, 188, 189, 190, 191, 193A, 193B,~~  
26 ~~194A, 194B, 195, 196, 197A, 197B, 200, 201, 202, 204, 205, 210, 211, 212, 213A,~~  
27 ~~213B, 213C, 214A, 214B, 215, 216A, 216B, 216C, 217, 225, 226, 227, 228, 229,~~  
28 ~~230, 231, 232A, 232B, 234, 235, 236, 237, 238A, 238B, 1-G, 2-G, 3-G, 4-G, 5-G,~~  
29 ~~6-G, 7-G, 8-G, 9-G, 10-G, 11-G, 12-G, 13-G, 13-KB, 15-K, 21-K, 22-K, 23-K, 24-K,~~

1 ~~26-K, 30-K, 31-K, 33-K, 1-W, 2-W, 3-W, 4-W, 5-W, 6-W, and 7-W of Jefferson~~  
2 ~~Parish; Precincts 1-1, 1-2, 1-5, 1-6, 2-1, 2-2, 2-4, 2-6, 2-7, 3-1, 3-8, 3-9, 3-12, 3-14,~~  
3 ~~3-15, 3-18, 3-19, 4-2, 4-3, 4-5, 4-6, 5-1, 5-2, 5-3, 5-5, 5-7, 5-8, 5-9, 5-10, 5-11, 5-12,~~  
4 ~~5-13, 6-1, 6-2, 6-4, 6-6, 6-7, 6-8, 6-9, 7-1, 7-2, 7-4, 7-5, 7-6, 7-7, 7-8, 7-9A, 7-10,~~  
5 ~~7-11, 7-12, 7-13, 7-14, 7-15, 7-16, 7-17, 7-18, 7-19, 7-20, 7-21, 7-23, 7-24, 7-25,~~  
6 ~~7-25A, 7-26, 7-27, 7-27B, 7-28, 7-28A, 7-29, 7-30, 7-32, 7-33, 7-35, 7-37, 7-37A,~~  
7 ~~7-40, 8-1, 8-2, 8-4, 8-6, 8-7, 8-8, 8-9, 8-12, 8-13, 8-14, 8-15, 8-19, 8-20, 8-21, 8-22,~~  
8 ~~8-23, 8-24, 8-25, 8-26, 8-27, 8-28, 8-30, 9-1, 9-3, 9-4, 9-5, 9-6, 9-7, 9-8, 9-9, 9-10,~~  
9 ~~9-11, 9-12, 9-13, 9-14, 9-15, 9-16, 9-17, 9-19, 9-21, 9-23, 9-25, 9-26, 9-28, 9-28C,~~  
10 ~~9-29, 9-30, 9-30A, 9-31, 9-31A, 9-31B, 9-31D, 9-32, 9-33, 9-34A, 9-35, 9-35A,~~  
11 ~~9-36, 9-36B, 9-37, 9-38, 9-38A, 9-39, 9-39B, 9-40, 9-40A, 9-40C, 9-41, 9-41A,~~  
12 ~~9-41B, 9-41C, 9-41D, 9-42, 9-42C, 9-43A, 9-43B, 9-43C, 9-43E, 9-43F, 9-43G,~~  
13 ~~9-43H, 9-43I, 9-43J, 9-43K, 9-43L, 9-43M, 9-43N, 9-44, 9-44A, 9-44B, 9-44D,~~  
14 ~~9-44E, 9-44F, 9-44G, 9-44I, 9-44J, 9-44L, 9-44M, 9-44N, 9-44O, 9-44P, 9-44Q,~~  
15 ~~9-45, 9-45A, 10-3, 10-6, 10-7, 10-8, 10-9, 10-11, 10-12, 10-13, 10-14, 11-2, 11-3,~~  
16 ~~11-4, 11-5, 11-8, 11-9, 11-10, 11-11, 11-12, 11-13, 11-14, 11-17, 12-1, 12-2, 12-3,~~  
17 ~~12-4, 12-5, 12-6, 12-7, 12-8, 12-9, 12-10, 12-11, 12-12, 12-13, 12-14, 12-16, 12-17,~~  
18 ~~12-19, 13-1, 13-2, 13-3, 13-4, 13-5, 13-6, 13-7, 13-8, 13-9, 13-10, 13-11, 13-12,~~  
19 ~~13-13, 13-14, 13-15, 13-16, 14-1, 14-5, 14-6, 14-17, 14-20, 14-23, 14-24A, 14-25,~~  
20 ~~14-26, 15-1, 15-2, 15-3, 15-5, 15-6, 15-8, 15-9, 15-10, 15-11, 15-12, 15-12A, 15-13,~~  
21 ~~15-13A, 15-13B, 15-14, 15-14A, 15-14B, 15-14C, 15-14D, 15-14E, 15-14F, 15-14G,~~  
22 ~~15-15, 15-15A, 15-15B, 15-16, 15-17, 15-17A, 15-17B, 15-18, 15-18A, 15-18B,~~  
23 ~~15-18C, 15-18D, 15-18E, 15-18F, 15-19, 15-19A, 15-19B, 15-19C, 16-1, 16-1A,~~  
24 ~~16-4, 16-5, 16-6, 16-7, 16-8, 16-9, 17-2, 17-3, 17-4, 17-5, 17-6, 17-7, 17-8, 17-9,~~  
25 ~~17-10, 17-11, 17-12, 17-13, 17-13A, 17-14, 17-15, and 17-16 of Orleans Parish;~~  
26 ~~Precincts 1-1, 1-2, 1-3, 1-5, 2-1, 2-2, 2-3, 2-4, 2-5, 4-1, 4-2, 4-3, 4-4, 5-1, 5-3, 5-4,~~  
27 ~~6-6, 6-7, 6-8, 7-1, 7-2, 7-3, and 7-4 of St. Charles Parish; St. James Parish; Precincts~~  
28 ~~1-1, 1-2, 1-3, 1-4, 1-5, 2-1, 2-2, 2-3, 2-4, 3-1, 3-2, 3-4, 4-1, 4-2, 4-3, 4-14, 5-1, 5-8,~~

1 ~~6-1, 6-3, 6-4, and 7-7 of St. John the Baptist Parish; and Precincts 1A, 1B, 1C, 2B,~~  
2 ~~6, 7B, 8, 10A, 10B, 11A, 11B, 13A, 13B, 14, and 15 of West Baton Rouge Parish.~~

3 (3) ~~District 3 is composed of Acadia Parish; Calcasieu Parish; Cameron~~  
4 ~~Parish; Iberia Parish; Jefferson Davis Parish; Lafayette Parish; Precincts 3, 4, 5, 6,~~  
5 ~~7, 8, 9, 10, 11, 12, 13, 14, 15, 16, 17, 18, 19, 20, 21, 22, 23, 24, 25, 26, 27, 28, and~~  
6 ~~29 of St. Martin Parish; Precincts 1, 2, 3, 4, 5, 6, 7, 8, 9, 10, 11, 12, 13, 14, 15, 16,~~  
7 ~~17, 18, 19, 20, 21, 22, 23, 25, 26, 27, 28, 29, 30, 31, 32, 33, 34, 35, 36, 37, 38, 39, 40,~~  
8 ~~42, 43, and 44 of St. Mary Parish; and Vermilion Parish.~~

9 (4) ~~District 4 is composed of Allen Parish; Beauregard Parish; Bienville~~  
10 ~~Parish; Bossier Parish; Caddo Parish; Claiborne Parish; DeSoto Parish; Evangeline~~  
11 ~~Parish; Precincts 1-1, 1-2, 1-3, 2-1, 2-2, 2-3, 2-5, 3-1, 3-2, 5-3, and 7-1 of Grant~~  
12 ~~Parish; Natchitoches Parish; Red River Parish; Sabine Parish; St. Landry Parish;~~  
13 ~~Union Parish; Vernon Parish; and Webster Parish.~~

14 (5) ~~District 5 is composed of Avoyelles Parish; Caldwell Parish; Catahoula~~  
15 ~~Parish; Concordia Parish; East Carroll Parish; East Feliciana Parish; Franklin Parish;~~  
16 ~~Precincts 3-3, 4-1, 4-2, 4-3, 5-1, 5-2, 6-1, 6-2, 6-3, 6-4, 7-2, 7-3, 7-4, 8-1, 8-2, 8-3,~~  
17 ~~and 8-4 of Grant Parish; Jackson Parish; LaSalle Parish; Lincoln Parish; Madison~~  
18 ~~Parish; Morehouse Parish; Ouachita Parish; Pointe Coupee Parish; Rapides Parish;~~  
19 ~~Richland Parish; St. Helena Parish; Precincts 1, 2, 6, 11, 15, 16, 17, 18, 26, 27, 28,~~  
20 ~~33, 40, 40A, 41, 42, 42A, 43, 44, 45, 45A, 46, 47, 101, 102, 104, 104A, 105, 106,~~  
21 ~~106A, 107, 108, 109, 110, 111A, 112, 114, 115B, 116, 117, 118, 119, 120A, 120B,~~  
22 ~~121, 121A, 123, 125, 127, 127A, 129, 129A, 133, 133A, 137, 137B, 137C, 137D,~~  
23 ~~139, 141, 143, and 143A of Tangipahoa Parish; Tensas Parish; Washington Parish;~~  
24 ~~West Carroll Parish; West Feliciana Parish; and Winn Parish.~~

25 (6) ~~District 6 is composed of Precincts 1, 2, 3, 4, 5, 6, 7, 8, 9, 10, 11, 12, 13,~~  
26 ~~14, 15, 16, 17, 18, 20, 21, 22, 23, 24, 25, 26, 27, 28, 31, 32, 33, 34, 35, 40, 41, 43, 58,~~  
27 ~~61, 62, 63, 64, 66, 71, 72, 73, 76, 77, and 78 of Ascension Parish; Precincts 2-1, 2-3,~~  
28 ~~2-4, 2-5, 3-1, 3-2, 4-1, 4-2, 5-1, 5-2, 5-3, 7-2, 7-3, 8-1, and 9-1 of Assumption Parish;~~  
29 ~~Precincts 1-1, 1-7, 1-8, 1-9, 1-12, 1-20, 1-33, 1-34, 1-35, 1-37, 1-38, 1-39, 1-40,~~

1 ~~1-41, 1-42, 1-43, 1-44, 1-45, 1-46, 1-47, 1-48, 1-49, 1-52, 1-53, 1-54, 1-55, 1-56,~~  
2 ~~1-57, 1-59, 1-60, 1-64, 1-65, 1-66, 1-68, 1-69, 1-70, 1-71, 1-72, 1-73, 1-74, 1-75,~~  
3 ~~1-76, 1-78, 1-79, 1-80, 1-81, 1-82, 1-83, 1-87, 1-88, 1-89, 1-90, 1-97, 1-98, 1-99,~~  
4 ~~1-102, 1-103, 1-105, 1-107, 2-2, 2-3, 2-4, 2-5, 2-6, 2-7, 2-8, 2-10, 2-12, 2-14, 2-15,~~  
5 ~~2-17, 2-18, 2-19, 2-21, 2-25, 2-26, 2-27, 2-28, 2-29, 2-31, 2-32, 2-33, 2-34, 2-35,~~  
6 ~~2-36, 2-37, 3-1, 3-2, 3-3, 3-4, 3-5, 3-6, 3-7, 3-8, 3-9, 3-10, 3-11, 3-12, 3-13, 3-14,~~  
7 ~~3-15, 3-16, 3-17, 3-18, 3-19, 3-20, 3-21, 3-22, 3-23, 3-24, 3-25, 3-26, 3-27, 3-28,~~  
8 ~~3-29, 3-30, 3-31, 3-32, 3-33, 3-34, 3-35, 3-36, 3-37, 3-38, 3-39, 3-40, 3-41, 3-43,~~  
9 ~~3-44, 3-45, 3-46, 3-47, 3-48, 3-49, 3-50, 3-51, 3-52, 3-53, 3-54, 3-55, 3-56, 3-57,~~  
10 ~~3-58, 3-59, 3-60, 3-61, 3-62, 3-63, 3-64, 3-65, 3-66, 3-67, 3-68, 3-69, 3-70, 3-71, and~~  
11 ~~3-72 of East Baton Rouge Parish; Precincts 4, 5, 13, 15B, 24, 25, 26, 27, 28, 29, 31,~~  
12 ~~and 32 of Iberville Parish; Precincts 1-1, 1-2, 1-3, 1-4, 1-5, 2-1, 2-1A, 2-2, 2-3, 2-3A,~~  
13 ~~2-4, 2-5, 2-6, 2-7, 2-8, 2-9, 2-10, 2-11, 2-12, 2-13, 2-14, 3-1, 3-4, 3-5, 5-1, 5-1A,~~  
14 ~~5-1B, 5-2, 6-1, 6-2, 6-3, 6-4, 6-5, 7-1, 7-2, 7-4, 11-3, 11-4, and 11-5 of Lafourche~~  
15 ~~Parish; Livingston Parish; Precincts 1-6, 2-6, 3-1, 3-2, 3-3, 5-5, 6-1, 6-2, and 6-4 of~~  
16 ~~St. Charles Parish; Precincts 4-13, 5-4, 5-7, 7-2, 7-3, and 7-5 of St. John the Baptist~~  
17 ~~Parish; Precincts 1 and 2 of St. Martin Parish; Precincts 24, 41, and 45 of St. Mary~~  
18 ~~Parish; Precincts 1, 4, 5, 7, 8, 9, 10, 12, 13, 14, 16, 17, 18, 51, 64, 65, 67, 68, 73, 74,~~  
19 ~~76, 82, 84, 86, and 87 of Terrebonne Parish; and Precincts 2A, 3, 4, 5, 7A, 9, 12, 16,~~  
20 ~~17, 18, 19, 20, 21, and 22 of West Baton Rouge Parish.~~

21 (1) District 1 is composed of Precincts 1, 2, 3, 4, 5, 7, 8, 9, 10, 11, 12, 13, 14,  
22 15, 16, 17, 18, 19, 20, 21, 22, 23, 24, 25, 26, 27, 28, 29, 30, 31, 32, 33, 34, 35, 36, 37,  
23 38, 39, 40, 41, 42, 43, 44, 45, 46, 51, 52, 53, 54, 55, 56, 57, 58, 59, 60, 61, 62, 63, 64,  
24 65, 66, 67, 68, 69, 70, 71, 72, 73, 74, 75, 76, 77, 78, 79, 80, 81, 82, 83, 84, 85, 86, 87,  
25 88, 89, 90, 91, 92, 93, 94, 95, 96, 97, 98, 99, 100, 101, 102, 103, 105, 106, 116, 117,  
26 118, 119, 120, 121, 122, 123, 124, 125A, 125B, 126, 127, 128, 129, 130, 132, 134,  
27 136, 192, 198, 199, 203, 246, 247, 248, 1-GI, 1-H, 2-H, 3-H, 4-H, 5-H, 6-H, 7-H,  
28 8-H, 9-H, 1-K, 2-K, 3-K, 4-K, 5-K, 6-KA, 6-KB, 7-KA, 7-KB, 8-K, 9-K, 10-K,  
29 11-K, 12-K, 13-KA, 14-K, 16-K, 17-K, 18-K, 19-K, 20-K, 25-K, 27-K, 28-K, 29-K,

1        34-K, 35-K, and 1-L of Jefferson Parish; Precincts 3-2, 3-3, 3-6, 4-1, 4-2, 4-3, 4-4,  
2        4-5, 4-6, 7-3, 8-1, 9-1, 9-2, 10-1, 10-2, 10-3, 10-4, 10-5, 10-6, 10-7, 10-8, 10-9,  
3        10-10, 10-11, 10-12, 10-13, 10-14, 10-15, 10-16, 11-1, and 11-2 of Lafourche Parish;  
4        Precincts 3-20, 4-7, 4-8, 4-9, 4-11, 4-14, 4-15, 4-17, 4-17A, 4-18, 4-20, 4-21, 4-22,  
5        4-23, 5-15, 5-16, 5-17, 5-18, 7-41, 7-42, 14-2, 14-3, 14-4, 14-7, 14-8, 14-9, 14-10,  
6        14-11, 14-12, 14-13A, 14-14, 14-15, 14-16, 14-18A, 14-19, 14-21, 16-2, 16-3, 17-1,  
7        17-17, 17-18, 17-18A, 17-19, and 17-20 of Orleans Parish; Plaquemines Parish; St.  
8        Bernard Parish; St. Tammany Parish; Precincts 48, 49, 70, 70A, 71, 72, 72A, 73, 74,  
9        120, 122, 122A, 122B, 124, 124A, 137A, 141A, 145, 147, 149, 149A, and 151 of  
10       Tangipahoa Parish; and Precincts 11, 15, 19, 20, 21, 23, 25, 27, 29, 31, 32, 34, 35,  
11       36, 38, 41, 43, 45, 46, 48, 49, 52, 53, 54, 55, 56, 57, 58, 59, 60, 61, 63, 69, 71, 72, 83,  
12       85, 88, 89, 90, 110, and 111 of Terrebonne Parish.

13                (2) District 2 is composed of Precincts 30, 36, 37, 39, 42, 44, 45, 47, 48, 50,  
14                51, 52, 53, 54, 55, 57, and 65 of Ascension Parish; Precincts 1-1, 1-2, 2-2, 4-3, 5-5,  
15                6-1, 6-2, 6-3, and 7-1 of Assumption Parish; Precincts 1-2, 1-3, 1-4, 1-5, 1-6, 1-10,  
16                1-11, 1-13, 1-14, 1-15, 1-16, 1-17, 1-18, 1-19, 1-21, 1-22, 1-23, 1-24, 1-25, 1-26,  
17                1-27, 1-28, 1-29, 1-30, 1-31, 1-32, 1-36, 1-50, 1-51, 1-58, 1-61, 1-62, 1-63, 1-67,  
18                1-77, 1-84, 1-85, 1-86, 1-91, 1-92, 1-93, 1-94, 1-95, 1-100, 1-101, 1-104, 2-1, 2-9,  
19                2-11, 2-13, 2-16, 2-20, 2-22, 2-23, 2-24, and 2-30 of East Baton Rouge Parish;  
20                Precincts 1, 3, 6, 7, 9, 10, 11, 12, 13C, 14, 14A, 15, 16, 17, 18, 19, 20, 21, 22, and  
21                23 of Iberville Parish; Precincts 104, 108, 115, 131, 133, 138, 150, 151, 152, 153,  
22                154, 155, 156, 157A, 157B, 170, 171, 172, 173, 174, 175, 176, 177, 178, 179A,  
23                179B, 180, 181, 182, 183, 184, 185A, 185B, 187, 188, 189, 190, 191, 193A, 193B,  
24                194A, 194B, 195, 196, 197A, 197B, 200, 201, 202, 204, 205, 210, 211, 212, 213A,  
25                213B, 213C, 214A, 214B, 215, 216A, 216B, 216C, 217, 225, 226, 227, 228, 229,  
26                230, 231, 232A, 232B, 234, 235, 236, 237, 238A, 238B, 1-G, 2-G, 3-G, 4-G, 5-G,  
27                6-G, 7-G, 8-G, 9-G, 10-G, 11-G, 12-G, 13-G, 13-KB, 15-K, 21-K, 22-K, 23-K, 24-K,  
28                26-K, 30-K, 31-K, 33-K, 1-W, 2-W, 3-W, 4-W, 5-W, 6-W, and 7-W of Jefferson  
29                Parish; Precincts 1-1, 1-2, 1-5, 1-6, 2-1, 2-2, 2-4, 2-6, 2-7, 3-1, 3-8, 3-9, 3-12, 3-14,

1        3-15, 3-18, 3-19, 4-2, 4-3, 4-5, 4-6, 5-1, 5-2, 5-3, 5-5, 5-7, 5-8, 5-9, 5-10, 5-11, 5-12,  
 2        5-13, 6-1, 6-2, 6-4, 6-6, 6-7, 6-8, 6-9, 7-1, 7-2, 7-4, 7-5, 7-6, 7-7, 7-8, 7-9A, 7-10,  
 3        7-11, 7-12, 7-13, 7-14, 7-15, 7-16, 7-17, 7-18, 7-19, 7-20, 7-21, 7-23, 7-24, 7-25,  
 4        7-25A, 7-26, 7-27, 7-27B, 7-28, 7-28A, 7-29, 7-30, 7-32, 7-33, 7-35, 7-37, 7-37A,  
 5        7-40, 8-1, 8-2, 8-4, 8-6, 8-7, 8-8, 8-9, 8-12, 8-13, 8-14, 8-15, 8-19, 8-20, 8-21, 8-22,  
 6        8-23, 8-24, 8-25, 8-26, 8-27, 8-28, 8-30, 9-1, 9-3, 9-4, 9-5, 9-6, 9-7, 9-8, 9-9, 9-10,  
 7        9-11, 9-12, 9-13, 9-14, 9-15, 9-16, 9-17, 9-19, 9-21, 9-23, 9-25, 9-26, 9-28, 9-28C,  
 8        9-29, 9-30, 9-30A, 9-31, 9-31A, 9-31B, 9-31D, 9-32, 9-33, 9-34A, 9-35, 9-35A,  
 9        9-36, 9-36B, 9-37, 9-38, 9-38A, 9-39, 9-39B, 9-40, 9-40A, 9-40C, 9-41, 9-41A,  
 10       9-41B, 9-41C, 9-41D, 9-42, 9-42C, 9-43A, 9-43B, 9-43C, 9-43E, 9-43F, 9-43G,  
 11       9-43H, 9-43I, 9-43J, 9-43K, 9-43L, 9-43M, 9-43N, 9-44, 9-44A, 9-44B, 9-44D,  
 12       9-44E, 9-44F, 9-44G, 9-44I, 9-44J, 9-44L, 9-44M, 9-44N, 9-44O, 9-44P, 9-44Q,  
 13       9-45, 9-45A, 10-3, 10-6, 10-7, 10-8, 10-9, 10-11, 10-12, 10-13, 10-14, 11-2, 11-3,  
 14       11-4, 11-5, 11-8, 11-9, 11-10, 11-11, 11-12, 11-13, 11-14, 11-17, 12-1, 12-2, 12-3,  
 15       12-4, 12-5, 12-6, 12-7, 12-8, 12-9, 12-10, 12-11, 12-12, 12-13, 12-14, 12-16, 12-17,  
 16       12-19, 13-1, 13-2, 13-3, 13-4, 13-5, 13-6, 13-7, 13-8, 13-9, 13-10, 13-11, 13-12,  
 17       13-13, 13-14, 13-15, 13-16, 14-1, 14-5, 14-6, 14-17, 14-20, 14-23, 14-24A, 14-25,  
 18       14-26, 15-1, 15-2, 15-3, 15-5, 15-6, 15-8, 15-9, 15-10, 15-11, 15-12, 15-12A, 15-13,  
 19       15-13A, 15-13B, 15-14, 15-14A, 15-14B, 15-14C, 15-14D, 15-14E, 15-14F, 15-14G,  
 20       15-15, 15-15A, 15-15B, 15-16, 15-17, 15-17A, 15-17B, 15-18, 15-18A, 15-18B,  
 21       15-18C, 15-18D, 15-18E, 15-18F, 15-19, 15-19A, 15-19B, 15-19C, 16-1, 16-1A,  
 22       16-4, 16-5, 16-6, 16-7, 16-8, 16-9, 17-2, 17-3, 17-4, 17-5, 17-6, 17-7, 17-8, 17-9,  
 23       17-10, 17-11, 17-12, 17-13, 17-13A, 17-14, 17-15, and 17-16 of Orleans Parish;  
 24       Precincts 1-1, 1-2, 1-3, 1-5, 2-1, 2-2, 2-3, 2-4, 2-5, 4-1, 4-2, 4-3, 4-4, 5-1, 5-3, 5-4,  
 25       6-6, 6-7, 6-8, 7-1, 7-2, 7-3, and 7-4 of St. Charles Parish; St. James Parish; Precincts  
 26       1-1, 1-2, 1-3, 1-4, 1-5, 2-1, 2-2, 2-3, 2-4, 3-1, 3-2, 3-4, 4-1, 4-2, 4-3, 4-14, 5-1, 5-8,  
 27       6-1, 6-3, 6-4, and 7-7 of St. John the Baptist Parish; and Precincts 1A, 1B, 1C, 2B,  
 28       6, 7B, 8, 10A, 10B, 11A, 11B, 13A, 13B, 14, and 15 of West Baton Rouge Parish.

1           (3) District 3 is composed of Acadia Parish; Calcasieu Parish; Cameron  
 2           Parish; Iberia Parish; Jefferson Davis Parish; Lafayette Parish; Precincts 3, 4, 5, 6,  
 3           7, 8, 9, 10, 11, 12, 13, 14, 15, 16, 17, 18, 19, 20, 21, 22, 23, 24, 25, 26, 27, 28, and  
 4           29 of St. Martin Parish; Precincts 1, 2, 3, 4, 5, 6, 7, 8, 9, 10, 11, 12, 13, 14, 15, 16,  
 5           17, 18, 19, 20, 21, 22, 23, 25, 26, 27, 28, 29, 30, 31, 32, 33, 34, 35, 36, 37, 38, 39, 40,  
 6           42, 43, and 44 of St. Mary Parish; and Vermilion Parish.

7           (4) District 4 is composed of Allen Parish; Beauregard Parish; Bienville  
 8           Parish; Bossier Parish; Caddo Parish; Claiborne Parish; DeSoto Parish; Evangeline  
 9           Parish; Precincts 1-1, 1-2, 1-3, 2-1, 2-2, 2-3, 2-5, 3-1, 3-2, 5-3, and 7-1 of Grant  
 10          Parish; Natchitoches Parish; Red River Parish; Sabine Parish; St. Landry Parish;  
 11          Union Parish; Vernon Parish; and Webster Parish.

12          (5) District 5 is composed of Avoyelles Parish; Caldwell Parish; Catahoula  
 13          Parish; Concordia Parish; East Carroll Parish; East Feliciana Parish; Franklin Parish;  
 14          Precincts 3-3, 4-1, 4-2, 4-3, 5-1, 5-2, 6-1, 6-2, 6-3, 6-4, 7-2, 7-3, 7-4, 8-1, 8-2, 8-3,  
 15          and 8-4 of Grant Parish; Jackson Parish; LaSalle Parish; Lincoln Parish; Madison  
 16          Parish; Morehouse Parish; Ouachita Parish; Pointe Coupee Parish; Rapides Parish;  
 17          Richland Parish; St. Helena Parish; Precincts 1, 2, 6, 11, 15, 16, 17, 18, 26, 27, 28,  
 18          33, 40, 40A, 41, 42, 42A, 43, 44, 45, 45A, 46, 47, 101, 102, 104, 104A, 105, 106,  
 19          106A, 107, 108, 109, 110, 111A, 112, 114, 115B, 116, 117, 118, 119, 120A, 120B,  
 20          121, 121A, 123, 125, 127, 127A, 129, 129A, 133, 133A, 137, 137B, 137C, 137D,  
 21          139, 141, 143, and 143A of Tangipahoa Parish; Tensas Parish; Washington Parish;  
 22          West Carroll Parish; West Feliciana Parish; and Winn Parish.

23          (6) District 6 is composed of Precincts 1, 2, 3, 4, 5, 6, 7, 8, 9, 10, 11, 12, 13,  
 24          14, 15, 16, 17, 18, 20, 21, 22, 23, 24, 25, 26, 27, 28, 31, 32, 33, 34, 35, 40, 41, 43, 58,  
 25          61, 62, 63, 64, 66, 71, 72, 73, 76, 77, and 78 of Ascension Parish; Precincts 2-1, 2-3,  
 26          2-4, 2-5, 3-1, 3-2, 4-1, 4-2, 5-1, 5-2, 5-3, 7-2, 7-3, 8-1, and 9-1 of Assumption Parish;  
 27          Precincts 1-1, 1-7, 1-8, 1-9, 1-12, 1-20, 1-33, 1-34, 1-35, 1-37, 1-38, 1-39, 1-40,  
 28          1-41, 1-42, 1-43, 1-44, 1-45, 1-46, 1-47, 1-48, 1-49, 1-52, 1-53, 1-54, 1-55, 1-56,  
 29          1-57, 1-59, 1-60, 1-64, 1-65, 1-66, 1-68, 1-69, 1-70, 1-71, 1-72, 1-73, 1-74, 1-75,



1        1-76, 1-78, 1-79, 1-80, 1-81, 1-82, 1-83, 1-87, 1-88, 1-89, 1-90, 1-97, 1-98, 1-99,  
2        1-102, 1-103, 1-105, 1-107, 2-2, 2-3, 2-4, 2-5, 2-6, 2-7, 2-8, 2-10, 2-12, 2-14, 2-15,  
3        2-17, 2-18, 2-19, 2-21, 2-25, 2-26, 2-27, 2-28, 2-29, 2-31, 2-32, 2-33, 2-34, 2-35,  
4        2-36, 2-37, 3-1, 3-2, 3-3, 3-4, 3-5, 3-6, 3-7, 3-8, 3-9, 3-10, 3-11, 3-12, 3-13, 3-14,  
5        3-15, 3-16, 3-17, 3-18, 3-19, 3-20, 3-21, 3-22, 3-23, 3-24, 3-25, 3-26, 3-27, 3-28,  
6        3-29, 3-30, 3-31, 3-32, 3-33, 3-34, 3-35, 3-36, 3-37, 3-38, 3-39, 3-40, 3-41, 3-43,  
7        3-44, 3-45, 3-46, 3-47, 3-48, 3-49, 3-50, 3-51, 3-52, 3-53, 3-54, 3-55, 3-56, 3-57,  
8        3-58, 3-59, 3-60, 3-61, 3-62, 3-63, 3-64, 3-65, 3-66, 3-67, 3-68, 3-69, 3-70, 3-71, and  
9        3-72 of East Baton Rouge Parish; Precincts 4, 5, 13, 15B, 24, 25, 26, 27, 28, 29, 31,  
10       and 32 of Iberville Parish; Precincts 1-1, 1-2, 1-3, 1-4, 1-5, 2-1, 2-1A, 2-2, 2-3, 2-3A,  
11       2-4, 2-5, 2-6, 2-7, 2-8, 2-9, 2-10, 2-11, 2-12, 2-13, 2-14, 3-1, 3-4, 3-5, 5-1, 5-1A,  
12       5-1B, 5-2, 6-1, 6-2, 6-3, 6-4, 6-5, 7-1, 7-2, 7-4, 11-3, 11-4, and 11-5 of Lafourche  
13       Parish; Livingston Parish; Precincts 1-6, 2-6, 3-1, 3-2, 3-3, 5-5, 6-1, 6-2, and 6-4 of  
14       St. Charles Parish; Precincts 4-13, 5-4, 5-7, 7-2, 7-3, and 7-5 of St. John the Baptist  
15       Parish; Precincts 1 and 2 of St. Martin Parish; Precincts 24, 41, and 45 of St. Mary  
16       Parish; Precincts 1, 4, 5, 7, 8, 9, 10, 12, 13, 14, 16, 17, 18, 51, 64, 65, 67, 68, 73, 74,  
17       76, 82, 84, 86, and 87 of Terrebonne Parish; and Precincts 2A, 3, 4, 5, 7A, 9, 12, 16,  
18       17, 18, 19, 20, 21, and 22 of West Baton Rouge Parish.

19       Section 2. Section 4 and Subsection B of Section 5 of Act No. 5 of the 2022 First  
20       Extraordinary Session of the Legislature are hereby repealed in their entirety.

21       Section 3.(A) The precincts referenced in this Act are those precincts identified as  
22       Voting Districts (VTDs) in the 2020 Census Redistricting TIGER/Line Shapefiles for the  
23       State of Louisiana as validated through the data verification program of the Louisiana House  
24       of Representatives and the Louisiana Senate and available on the legislature's website on the  
25       effective date of this Section.

26       (B) When a precinct referenced in this Act has been subdivided by action of the  
27       parish governing authority on a nongeographic basis or subdivided by action of the parish  
28       governing authority on a geographic basis in accordance with the provisions of R.S.  
29       18:532.1, the enumeration in this Act of the general precinct designation shall include all

1 nongeographic and all geographic subdivisions thereof, however such subdivisions may be  
2 designated.

3 (C) The territorial limits of the districts as provided in this Act shall continue in  
4 effect until changed by law regardless of any subsequent change made to the precincts by  
5 the parish governing authority.

6 Section 4. The provisions of this Act shall not reduce the term of office of any  
7 person holding any position or office on the effective date of this Section for which the  
8 appointment or election is based upon a congressional district as composed pursuant to R.S.  
9 18:1276.1. Any position or office that is filled by appointment or election based on a  
10 congressional district and that is to be filled after January 3, 2023, shall be appointed or  
11 elected from a district as it is described in Section 1 of this Act.

12 Section 5.(A) Solely for the purposes of qualifying for election and the election of  
13 representatives to the United States Congress at the regularly scheduled election for  
14 representatives to the congress in 2022, the provisions of Section 1 of this Act shall become  
15 effective upon signature of this Act by the governor or, if not signed by the governor, upon  
16 expiration of the time for bills to become law without signature by the governor, as provided  
17 in Article III, Section 18 of the Constitution of Louisiana. If this Act is vetoed by the  
18 governor and subsequently approved by the legislature, the provisions of Section 1 of this  
19 Act shall become effective on the day following such approval for the purposes established  
20 in this Subsection.

21 (B) For subsequent elections of representatives to the United States Congress and  
22 for all other purposes, the provisions of Section 1 of this Act shall become effective at noon  
23 on January 3, 2023.

24 (C) The provisions of this Section and Sections 2, 3, and 4 of this Act shall become  
25 effective upon signature of this Act by the governor or, if not signed by the governor, upon  
26 expiration of the time for bills to become law without signature by the governor, as provided  
27 in Article III, Section 18 of the Constitution of Louisiana. If this Act is vetoed by the  
28 governor and subsequently approved by the legislature, the provisions of this Section and  
29 Sections 2, 3, and 4 of this Act shall become effective on the day following such approval.

---

**DIGEST**

The digest printed below was prepared by House Legislative Services. It constitutes no part of the legislative instrument. The keyword, one-liner, abstract, and digest do not constitute part of the law or proof or indicia of legislative intent. [R.S. 1:13(B) and 24:177(E)]

---

HB 2 Original

2022 Second Extraordinary Session

Schexnayder

**Abstract:** Provides for the redistricting of the state's congressional districts and provides for the composition of each of the six congressional districts. Effective for election purposes only for the regular congressional elections in 2022 and for all other purposes at noon on Jan. 3, 2023.

Statistical summaries of proposed law, including district variances from the ideal population of 776,292 and the range of those variances, as well as maps illustrating proposed district boundaries accompany this digest. (*Attached to the bill version on the internet.*)

Present U.S. Constitution (14th Amendment) provides that representatives in congress shall be apportioned among the several states according to their respective numbers, counting the whole number of persons in each state. The U.S. Supreme Court has held that the population of congressional districts in the same state must be as nearly equal in population as practicable.

Proposed law redraws district boundaries for the six congressional districts, effective upon signature of the governor or lapse of time for gubernatorial action for purposes of the 2022 election.

Proposed law provides for its effectiveness in lieu of Act No. 5 of the 2022 1st E.S., which also redrew district boundaries for the six congressional districts based on 2020 Census Redistricting Data.

Proposed law retains present law districts based on 2010 Census Redistricting Data until noon on Jan. 3, 2023, at which time present law is repealed and proposed districts are effective for all other purposes.

Proposed law specifies that precincts referenced in district descriptions are those precincts identified as Voting Districts (VTDs) in the 2020 Census Redistricting TIGER/Line Shapefiles for the state of La. as validated through the data verification program of the La. legislature. Also specifies that if any such precinct has been subdivided by action of the parish governing authority on a nongeographic basis or subdivided by action of the parish governing authority on a geographic basis in accordance with present law, the enumeration of the general precinct designation shall include all nongeographic and all geographic subdivisions thereof. Further provides that the territorial limits of the districts as enacted shall continue in effect until changed by law regardless of any subsequent change made to the precincts by the parish governing authority.

Proposed law specifies that proposed law does not reduce the term of office of any person holding any position or office on the effective date of proposed law for which the appointment or election is based upon a congressional district as composed pursuant to present law. Specifies that any position or office filled after Jan. 3, 2023, for which the appointment or election is based on a congressional district shall be appointed or elected from a district as it is described in proposed law.

Population data in the summaries accompanying this digest are derived from 2020 Census Redistricting Data (Public Law 94-171), Summary File for Louisiana. Population data,

statistical information, and maps are supplied for purposes of information and analysis and comprise no part of proposed law.

Effective for election purposes only for the regular congressional elections in 2022; effective for all other purposes at noon on Jan. 3, 2023.

(Amends R.S. 18:1276; Repeals §§ 4 and 5(B) of Act No. 5 of the 2022 1st E.S.)

# Plan Statistics

## Plan: HLS 222ES - 6 (Schexnayder) Original

<u>Districts:</u>	<u># of Members</u>	<u>Actual Population</u>	<u>Ideal Population</u>	<u>Absolute Deviation</u>	<u>Relative Deviation</u>
District 1	1	776,268	776,292	-24	-0.003%
District 2	1	776,317	776,292	25	0.003%
District 3	1	776,275	776,292	-17	-0.002%
District 4	1	776,333	776,292	41	0.005%
District 5	1	776,277	776,292	-15	-0.002%
District 6	1	776,287	776,292	-5	-0.001%
<b>Grand Total:</b>	<b>6</b>	<b>4,657,757</b>	<b>4,657,752</b>		

Ideal Population Per Member:	776292			
Number of Districts for Plan Type:	6			
Range of District Populations:	776,268	to	776,333	
Absolute Mean Deviation:	11			
Absolute Range:	-24	to	41	
Absolute Overall Range:	65			
Relative Mean Deviation:	0.00%			
Relative Range:	0.00%	to	0.01%	
Relative Overall Range:	0.01%			

<b><i>Ideal - Actual:</i></b>	<b>-5</b>
<b><i>Remainder:</i></b>	<b>5</b>
<b><i>Unassigned Population:</i></b>	<b>0</b>

# Total Population

Plan: HLS 222ES - 6 (Schexnayder) Original

	Total Population	Total White	Total Black	Total Asian	Total American Indian	Total Other	Total Hispanic	VAP Total	VAP White	VAP Black	VAP Asian	VAP American Indian	VAP Other	VAP Hispanic Total
District 1	776,268	538,478	115,838	24,415	22,805	74,732	93,429	601,559	432,961	81,105	17,955	16,212	53,326	65,811
	100.000%	69.368%	14.922%	3.145%	2.938%	9.627%	12.036%	100.000%	71.973%	13.482%	2.985%	2.695%	8.865%	10.940%
District 2	776,317	219,200	473,236	23,773	8,169	51,939	67,228	600,203	185,728	352,018	18,988	6,361	37,108	47,041
	100.000%	28.236%	60.959%	3.062%	1.052%	6.690%	8.660%	100.000%	30.944%	58.650%	3.164%	1.060%	6.183%	7.838%
District 3	776,275	508,115	205,820	16,256	11,306	34,778	41,065	586,488	398,253	144,434	11,650	8,287	23,864	27,487
	100.000%	65.456%	26.514%	2.094%	1.456%	4.480%	5.290%	100.000%	67.905%	24.627%	1.986%	1.413%	4.069%	4.687%
District 4	776,333	441,299	277,767	11,290	17,714	28,263	35,242	591,095	349,936	199,907	8,169	13,251	19,832	24,043
	100.000%	56.844%	35.779%	1.454%	2.282%	3.641%	4.540%	100.000%	59.201%	33.820%	1.382%	2.242%	3.355%	4.068%
District 5	776,277	456,496	272,728	9,505	13,227	24,321	29,500	597,389	365,204	196,617	7,325	10,050	18,193	21,569
	100.000%	58.806%	35.133%	1.224%	1.704%	3.133%	3.800%	100.000%	61.133%	32.913%	1.226%	1.682%	3.045%	3.611%
District 6	776,287	494,064	197,730	22,049	13,839	48,605	56,085	593,814	392,429	141,688	16,329	10,079	33,289	37,711
	100.000%	63.645%	25.471%	2.840%	1.783%	6.261%	7.225%	100.000%	66.086%	23.861%	2.750%	1.697%	5.606%	6.351%
Grand Total	4,657,757	2,657,652	1,543,119	107,288	87,060	262,638	322,549	3,570,548	2,124,511	1,115,769	80,416	64,240	185,612	223,662
	100.000%	57.059%	33.130%	2.303%	1.869%	5.639%	6.925%	100.000%	59.501%	31.249%	2.252%	1.799%	5.198%	6.264%

# Voter Registration

Plan: HLS 222ES - 6 (Schexnayder) Original

	Reg Total Dec 2021	Reg White Dec 2021	Reg Black Dec 2021	Reg Other Dec 2021	Reg Dem Total Dec 2021	Reg Rep Total Dec 2021	Reg Other Total Dec 2021
District 1	489,060	389,345	56,094	43,621	136,809	204,591	147,660
	81.299%	79.611%	11.470%	8.919%	27.974%	41.834%	30.193%
District 2	495,732	152,592	304,045	39,095	313,790	58,535	123,407
	82.594%	30.781%	61.333%	7.886%	63.298%	11.808%	24.894%
District 3	479,827	344,683	114,946	20,198	168,883	180,513	130,431
	81.814%	71.835%	23.956%	4.209%	35.197%	37.620%	27.183%
District 4	476,959	293,751	162,671	20,537	191,798	167,490	117,671
	80.691%	61.588%	34.106%	4.306%	40.213%	35.116%	24.671%
District 5	478,443	306,271	158,051	14,121	190,367	171,915	116,161
	80.089%	64.014%	33.034%	2.951%	39.789%	35.932%	24.279%
District 6	474,325	341,347	106,941	26,037	159,357	185,736	129,232
	79.878%	71.965%	22.546%	5.489%	33.597%	39.158%	27.245%
<b>Grand Total</b>	<b>2,894,346</b>	<b>1,827,989</b>	<b>902,748</b>	<b>163,609</b>	<b>1,161,004</b>	<b>968,780</b>	<b>764,562</b>

# Splits

## Plan: HLS 222ES - 6 (Schexnayder) Original

	Total Population	Total White	Total Black	Total Asian	Total American Indian	Total Other	VAP Total	VAP White	VAP Black	VAP Asian	VAP American Indian	VAP Other	Reg Total Dec 2021	Reg White Dec 2021	Reg Black Dec 2021	Reg Other Dec 2021
District 1																
*Jefferson	245,132	158,171	32,307	12,015	4,487	38,152	196,104	132,171	23,683	9,056	3,385	27,809	150,722	117,879	13,544	19,299
*Lafourche	43,701	35,524	1,903	534	2,961	2,779	33,330	28,074	1,095	393	1,960	1,808	25,831	23,680	621	1,530
*Orleans	48,050	38,141	3,973	1,929	569	3,438	39,613	31,740	3,348	1,475	448	2,602	32,683	27,730	1,551	3,402
Plaquemines	23,515	14,287	5,428	1,317	697	1,786	17,334	10,856	3,857	925	500	1,196	13,908	9,513	3,134	1,261
St. Bernard	43,764	24,497	12,309	1,381	947	4,630	31,775	18,992	7,944	982	688	3,169	25,653	18,233	5,497	1,923
St. Tammany	264,570	196,641	38,643	5,774	5,660	17,852	202,228	154,621	26,761	4,075	4,161	12,610	178,779	145,724	21,142	11,913
*Tangipahoa	39,681	29,260	7,152	457	938	1,874	30,157	22,966	4,838	312	696	1,345	23,497	19,131	3,395	971
*Terrebonne	67,855	41,957	14,123	1,008	6,546	4,221	51,018	33,541	9,579	737	4,374	2,787	37,987	27,455	7,210	3,322
District 1	776,268	538,478	115,838	24,415	22,805	74,732	601,559	432,961	81,105	17,955	16,212	53,326	489,060	389,345	56,094	43,621
	100.000%	69.368%	14.922%	3.145%	2.938%	9.627%	100.000%	71.973%	13.482%	2.985%	2.695%	8.865%	81.299%	79.611%	11.470%	8.919%
District 2																
*Ascension	20,892	5,625	13,842	140	170	1,115	15,426	4,672	9,766	104	113	771	13,180	3,868	8,794	518
*Assumption	6,710	2,870	3,622	23	44	151	5,270	2,334	2,764	15	33	124	4,756	1,997	2,702	57
*East Baton Rouge	94,325	5,624	85,793	483	369	2,056	70,960	5,094	63,632	382	289	1,563	58,983	2,990	54,254	1,739
*Iberville	21,073	8,453	11,316	173	147	984	16,631	7,182	8,363	125	114	847	13,630	5,355	7,955	320
*Jefferson	195,649	62,764	93,910	11,009	3,199	24,767	148,550	51,964	68,492	8,636	2,450	17,008	112,379	41,737	56,032	14,610
*Orleans	335,947	88,321	214,996	10,927	3,097	18,606	266,583	78,512	162,720	9,045	2,500	13,806	223,561	64,256	139,974	19,331
*St. Charles	34,943	21,021	11,091	501	610	1,720	26,288	16,352	7,957	307	457	1,215	23,249	15,046	7,109	1,094
St. James	20,192	9,973	9,762	60	82	315	15,505	7,883	7,297	31	64	230	14,966	7,254	7,501	211
*St. John the Baptist	32,678	8,833	21,557	244	303	1,741	24,826	7,363	15,831	183	235	1,214	22,433	6,282	15,109	1,042
*West Baton Rouge	13,908	5,716	7,347	213	148	484	10,164	4,372	5,196	160	106	330	8,595	3,807	4,615	173
District 2	776,317	219,200	473,236	23,773	8,169	51,939	600,203	185,728	352,018	18,988	6,361	37,108	495,732	152,592	304,045	39,095
	100.000%	28.236%	60.959%	3.062%	1.052%	6.690%	100.000%	30.944%	58.650%	3.164%	1.060%	6.183%	82.594%	30.781%	61.333%	7.886%
District 3																
Acadia	57,576	44,480	10,864	238	573	1,421	42,943	34,071	7,383	173	400	916	37,678	30,555	6,407	716
Calcasieu	216,785	139,772	59,386	4,702	3,536	9,389	163,166	108,789	41,898	3,359	2,604	6,516	120,511	85,659	29,513	5,339
Cameron	5,617	5,232	125	30	75	155	4,358	4,100	79	23	47	109	4,789	4,610	88	91
Iberia	69,929	39,206	24,556	2,123	794	3,250	52,791	31,295	17,069	1,562	581	2,284	44,526	28,287	14,352	1,887
Jefferson Davis	32,250	25,066	5,837	183	472	692	24,039	19,121	4,006	111	325	476	20,013	16,350	3,202	461
Lafayette	241,753	153,363	65,136	6,454	3,210	13,590	183,875	121,608	45,917	4,664	2,387	9,299	153,493	108,645	36,481	8,367
*St. Martin	50,399	31,974	15,908	590	505	1,422	38,250	25,187	11,282	402	383	996	34,127	22,955	10,380	792
*St. Mary	44,607	24,545	15,198	489	1,518	2,857	34,054	19,719	11,013	319	1,072	1,931	27,921	17,117	9,529	1,275
Vermilion	57,359	44,477	8,810	1,447	623	2,002	43,012	34,363	5,787	1,037	488	1,337	36,769	30,505	4,994	1,270
District 3	776,275	508,115	205,820	16,256	11,306	34,778	586,488	398,253	144,434	11,650	8,287	23,864	479,827	344,683	114,946	20,198
	100.000%	65.456%	26.514%	2.094%	1.456%	4.480%	100.000%	67.905%	24.627%	1.986%	1.413%	4.069%	81.814%	71.835%	23.956%	4.209%



# Splits

## Plan: HLS 222ES - 6 (Schexnayder) Original

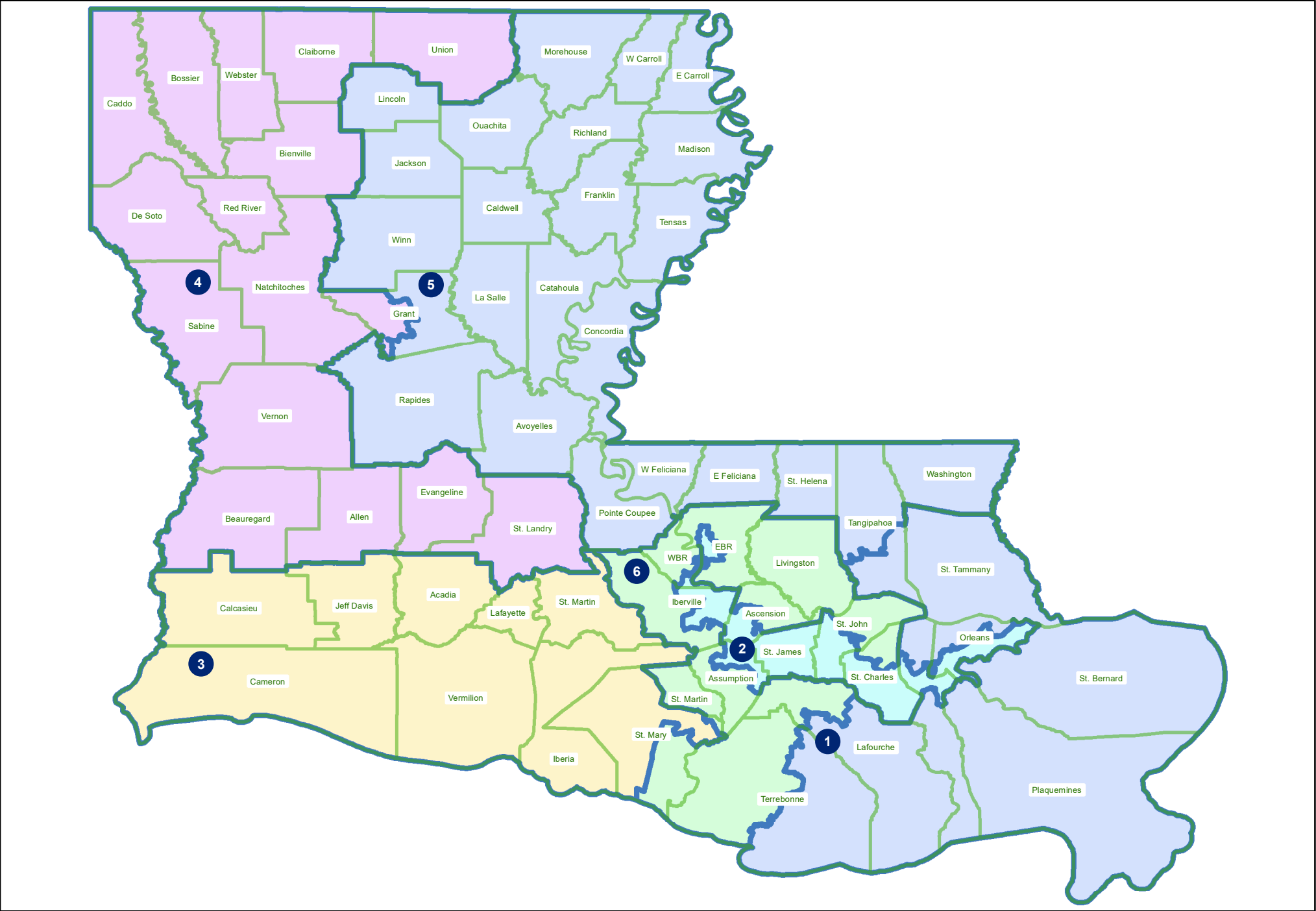
	Total Population	Total White	Total Black	Total Asian	Total American Indian	Total Other	VAP Total	VAP White	VAP Black	VAP Asian	VAP American Indian	VAP Other	Reg Total Dec 2021	Reg White Dec 2021	Reg Black Dec 2021	Reg Other Dec 2021
District 4																
Allen	22,750	16,327	4,490	246	947	740	17,510	12,751	3,275	182	646	656	12,201	9,478	2,217	506
Beauregard	36,549	29,529	4,649	402	1,052	917	27,489	22,304	3,495	269	773	648	22,294	18,771	2,369	1,154
Bienville	12,981	6,950	5,600	57	207	167	10,073	5,486	4,284	30	162	111	8,847	4,843	3,917	87
Bossier	128,746	81,052	32,551	3,492	3,273	8,378	95,876	62,931	22,440	2,448	2,477	5,580	69,743	50,861	14,838	4,044
Caddo	237,848	103,457	119,304	4,034	3,840	7,213	182,407	85,059	86,359	3,008	2,958	5,023	151,296	73,113	71,249	6,934
Claiborne	14,170	7,263	6,360	88	185	274	11,507	6,258	4,824	55	140	230	8,598	4,632	3,820	146
De Soto	26,812	15,284	9,973	117	740	698	20,440	11,909	7,425	86	557	463	18,713	11,330	6,810	573
Evangeline	32,350	21,354	9,235	241	280	1,240	24,408	16,460	6,483	187	217	1,061	20,553	14,566	5,643	344
*Grant	7,473	5,598	1,563	28	174	110	5,801	4,451	1,133	17	129	71	4,929	3,875	935	119
Natchitoches	37,515	19,361	15,725	255	861	1,313	29,349	16,010	11,415	198	683	1,043	23,107	12,850	9,224	1,033
Red River	7,620	4,195	3,106	25	171	123	5,714	3,338	2,164	3	116	93	5,631	3,130	2,418	83
Sabine	22,155	15,036	3,861	94	2,723	441	17,064	12,054	2,655	66	1,970	319	14,547	11,023	2,184	1,340
St. Landry	82,540	43,611	35,836	499	636	1,958	61,811	34,209	25,497	353	451	1,301	54,482	30,093	23,005	1,384
Union	21,107	14,460	5,224	62	338	1,023	16,632	11,807	3,861	39	254	671	15,221	11,066	3,692	463
Vernon	48,750	35,087	7,611	1,442	1,600	3,010	36,261	26,765	5,133	1,074	1,160	2,129	24,060	19,182	3,011	1,867
Webster	36,967	22,735	12,679	208	687	658	28,753	18,144	9,464	154	558	433	22,737	14,938	7,339	460
District 4	776,333	441,299	277,767	11,290	17,714	28,263	591,095	349,936	199,907	8,169	13,251	19,832	476,959	293,751	162,671	20,537
	100.000%	56.844%	35.779%	1.454%	2.282%	3.641%	100.000%	59.201%	33.820%	1.382%	2.242%	3.355%	80.691%	61.588%	34.106%	4.306%
District 5																
Avoyelles	39,693	25,625	11,678	434	767	1,189	30,578	20,269	8,311	379	570	1,049	23,426	16,534	6,294	598
Caldwell	9,645	7,646	1,632	51	150	166	7,478	5,969	1,224	46	116	123	6,031	5,124	818	89
Catahoula	8,906	5,776	2,395	46	119	570	6,951	4,557	1,736	33	87	538	6,467	4,639	1,770	58
Concordia	18,687	10,275	7,725	122	233	332	14,217	8,108	5,613	100	167	229	11,964	7,222	4,540	202
East Carroll	7,459	2,054	5,272	29	43	61	5,901	1,773	4,043	19	27	39	4,709	1,306	3,359	44
East Feliciana	19,539	11,516	7,341	91	262	329	16,183	9,740	5,918	61	198	266	13,600	7,959	5,186	455
Franklin	19,774	12,492	6,802	70	205	205	15,028	9,901	4,779	44	153	151	13,159	9,015	4,034	110
*Grant	14,696	12,111	1,772	105	470	238	11,726	9,513	1,584	80	378	171	7,759	7,299	241	219
Jackson	15,031	9,967	4,166	175	255	468	11,783	7,967	3,125	140	174	377	9,449	6,647	2,610	192
La Salle	14,791	11,348	1,422	283	372	1,366	11,563	8,636	1,065	264	271	1,327	8,792	7,978	637	177
Lincoln	48,396	26,034	19,364	892	662	1,444	38,655	21,306	15,119	744	526	960	25,649	15,672	9,016	961
Madison	10,017	3,475	6,363	20	59	100	7,435	2,906	4,391	9	48	81	7,278	2,494	4,674	110
Morehouse	25,629	12,281	12,484	160	370	334	20,062	10,095	9,300	117	279	271	16,922	8,505	8,131	286
Ouachita	160,368	88,545	61,217	2,788	2,661	5,157	120,200	69,974	42,290	2,118	2,059	3,759	99,752	60,515	35,658	3,579
Pointe Coupee	20,758	12,395	7,504	107	159	593	16,250	10,108	5,502	91	119	430	14,675	9,320	5,121	234
Rapides	130,023	77,510	42,592	2,428	3,102	4,391	98,792	61,373	30,205	1,786	2,334	3,094	80,176	52,832	23,775	3,569

# Splits

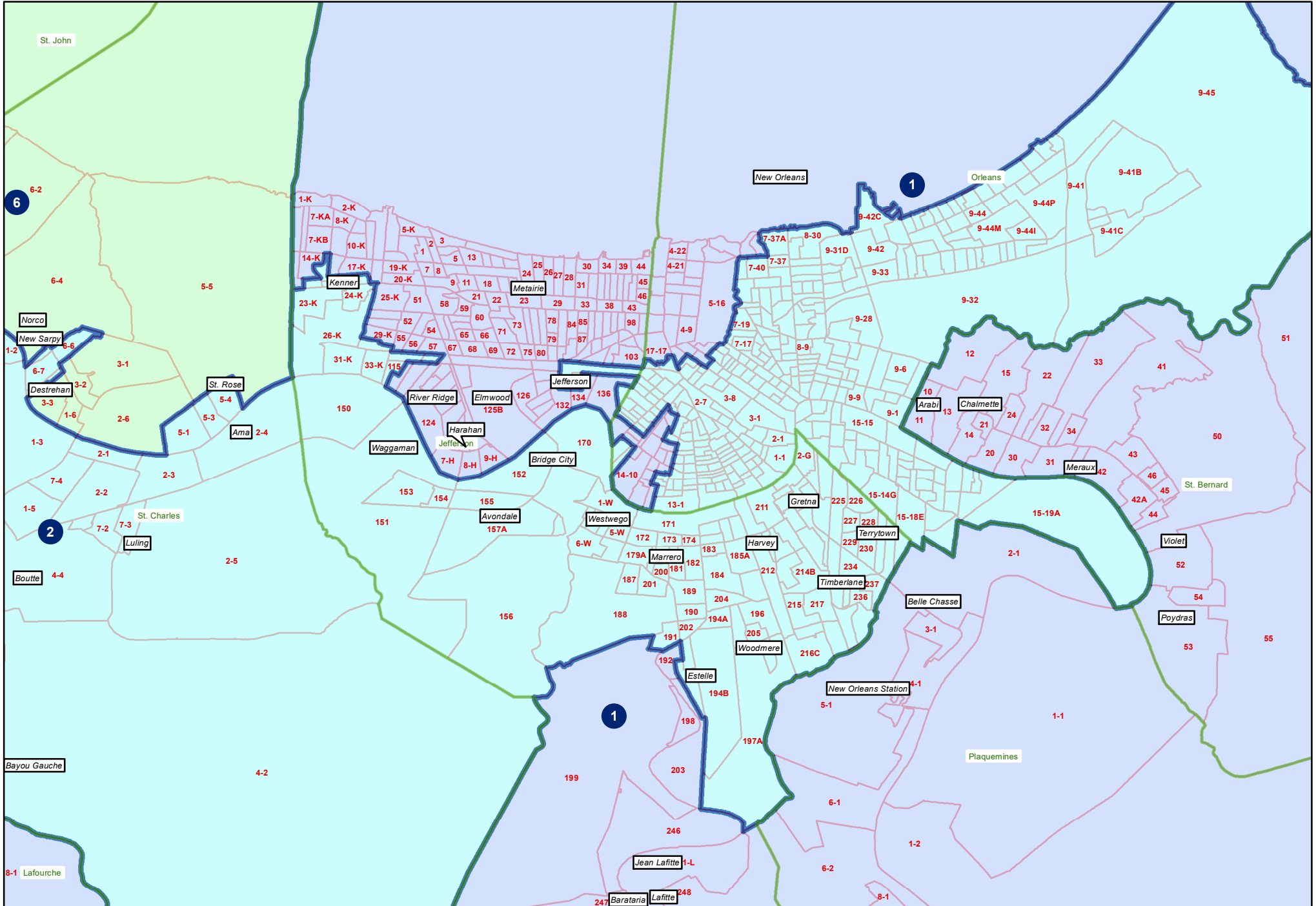
## Plan: HLS 222ES - 6 (Schexnayder) Original

	Total Population	Total White	Total Black	Total Asian	Total American Indian	Total Other	VAP Total	VAP White	VAP Black	VAP Asian	VAP American Indian	VAP Other	Reg Total Dec 2021	Reg White Dec 2021	Reg Black Dec 2021	Reg Other Dec 2021
District 5																
Richland	20,043	11,785	7,603	83	258	314	15,383	9,338	5,546	66	203	230	13,662	8,470	4,961	231
St. Helena	10,920	4,527	6,031	39	134	189	8,463	3,805	4,371	28	109	150	8,321	3,628	4,565	128
*Tangipahoa	93,476	52,076	34,727	1,017	1,516	4,140	71,334	42,239	24,379	788	1,131	2,797	52,759	33,781	17,130	1,848
Tensas	4,147	1,744	2,312	23	26	42	3,235	1,446	1,728	12	23	26	3,455	1,503	1,917	35
Washington	45,463	29,943	13,434	216	736	1,134	34,951	23,743	9,732	154	561	761	27,587	18,835	8,102	650
West Carroll	9,751	7,894	1,425	27	180	225	7,532	6,223	1,010	20	136	143	7,038	5,913	1,040	85
West Feliciana	15,310	10,883	3,740	89	225	373	12,783	9,283	2,951	56	174	319	7,407	5,092	2,180	135
Winn	13,755	8,594	3,727	210	263	961	10,906	6,932	2,695	170	207	902	8,406	5,988	2,292	126
District 5	776,277	456,496	272,728	9,505	13,227	24,321	597,389	365,204	196,617	7,325	10,050	18,193	478,443	306,271	158,051	14,121
	100.000%	58.806%	35.133%	1.224%	1.704%	3.133%	100.000%	61.133%	32.913%	1.226%	1.682%	3.045%	80.089%	64.014%	33.034%	2.951%
District 6																
*Ascension	105,608	75,516	18,374	2,160	1,834	7,724	76,531	56,464	12,373	1,410	1,277	5,007	66,737	52,932	10,020	3,785
*Assumption	14,329	10,852	2,598	73	214	592	11,346	8,811	1,943	42	164	386	9,683	7,703	1,808	172
*East Baton Rouge	362,456	190,445	127,605	15,942	4,358	24,106	284,652	158,787	93,158	12,217	3,458	17,032	220,281	135,242	70,421	14,618
*Iberville	9,168	6,380	2,414	29	127	218	7,455	5,280	1,869	24	107	175	6,832	4,777	1,942	113
*Lafourche	53,856	36,186	13,952	491	1,263	1,964	41,289	28,764	9,982	345	817	1,381	32,447	24,787	6,543	1,117
Livingston	142,282	116,855	12,658	1,697	3,111	7,961	105,141	88,432	8,136	1,099	2,311	5,163	84,568	76,062	5,425	3,081
*St. Charles	17,606	12,529	2,837	336	315	1,589	13,253	9,802	1,933	222	210	1,086	11,736	9,263	1,688	785
*St. John the Baptist	9,799	5,044	3,639	159	162	795	7,677	4,259	2,606	140	115	557	6,480	3,937	2,125	418
*St. Martin	1,368	1,285	13	7	34	29	1,154	1,091	11	5	30	17	993	979	1	13
*St. Mary	4,799	2,404	793	346	152	1,104	3,467	1,875	507	274	101	710	2,289	1,595	362	332
*Terrebonne	41,725	27,977	9,024	735	2,091	1,898	31,487	22,090	6,217	502	1,376	1,302	23,733	17,940	4,356	1,437
*West Baton Rouge	13,291	8,591	3,823	74	178	625	10,362	6,774	2,953	49	113	473	8,546	6,130	2,250	166
District 6	776,287	494,064	197,730	22,049	13,839	48,605	593,814	392,429	141,688	16,329	10,079	33,289	474,325	341,347	106,941	26,037
	100.000%	63.645%	25.471%	2.840%	1.783%	6.261%	100.000%	66.086%	23.861%	2.750%	1.697%	5.606%	79.878%	71.965%	22.546%	5.489%

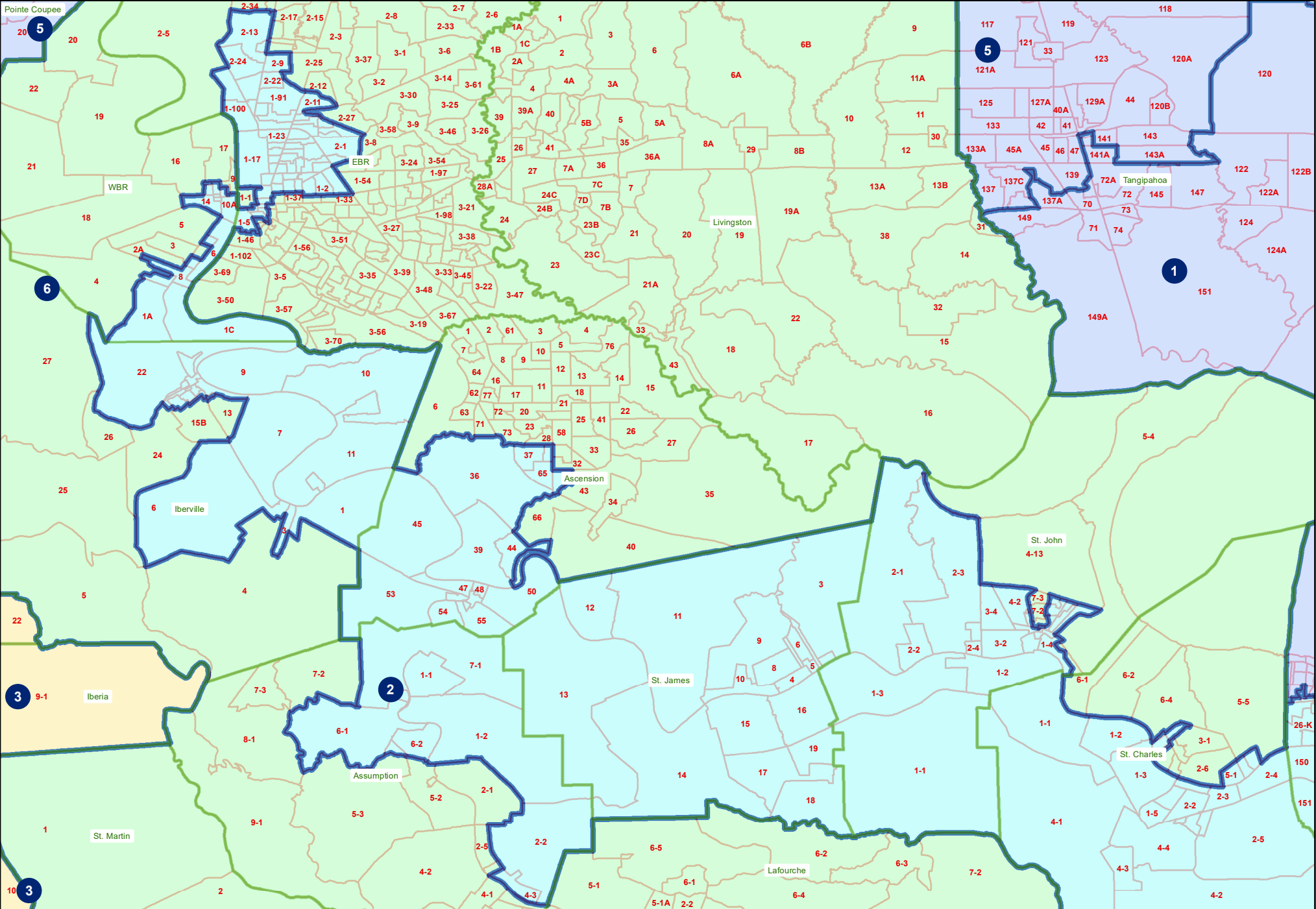
HLS 222ES - 6 (Schexnayder) Original  
Statewide



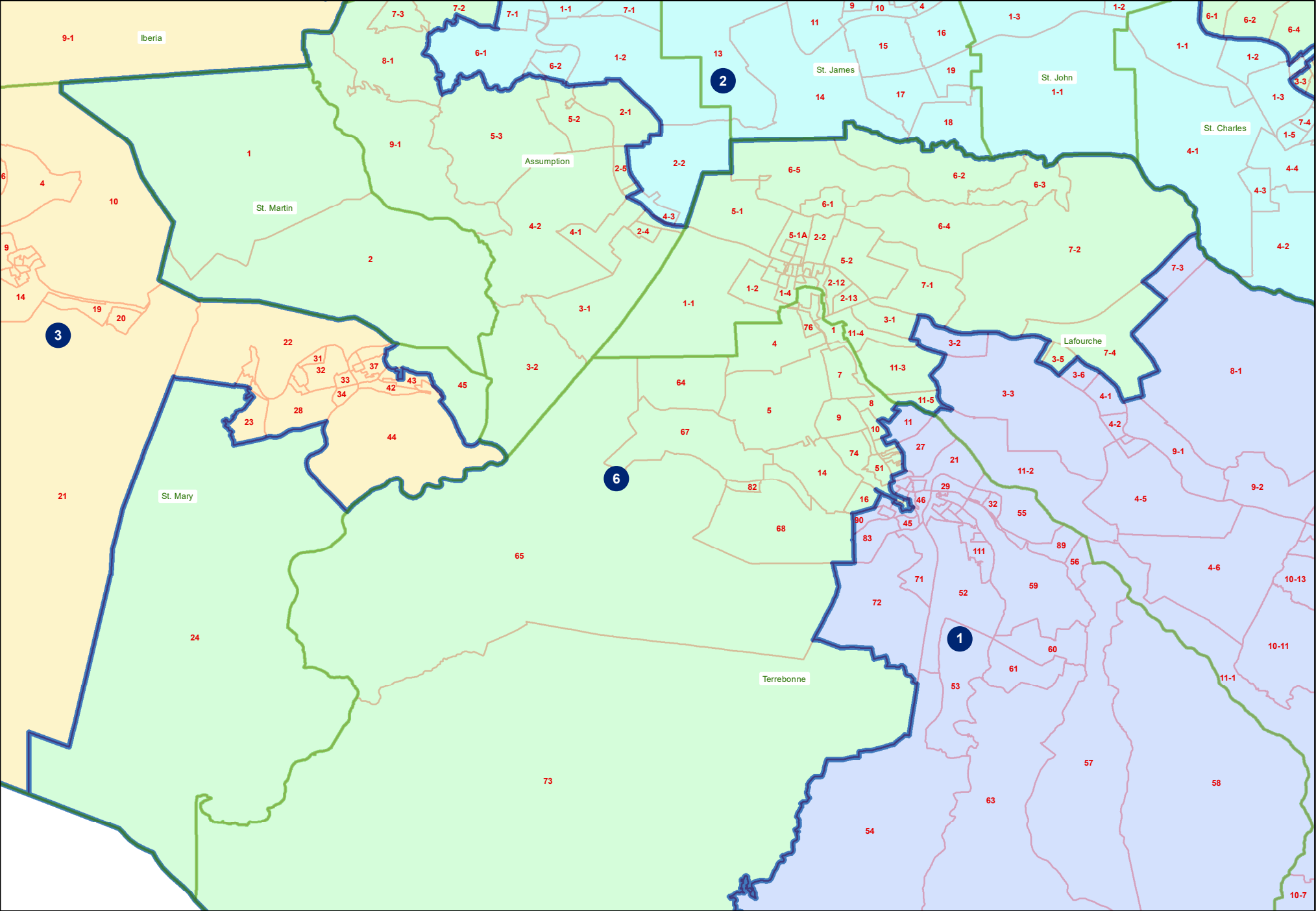
HLS 222ES - 6 (Schexnayder) Original  
Jefferson and Orleans



HLS 222ES - 6 (Schexnayder) Original  
Capital and River Region



HLS 222ES - 6 (Schexnayder) Original  
Bayou Region



# HLS 222ES - 6 (Schexnayder) Original Grant Parish

