

2022 Second Extraordinary Session

HOUSE BILL NO. 3

BY REPRESENTATIVE IVEY

CONGRESS/DISTRICTS: Provides relative to the districts for elected members of the United States Congress

1 AN ACT

2 To amend and reenact R.S. 18:1276 and to repeal Section 4 and Subsection B of Section 5
3 of Act No. 5 of the 2022 First Extraordinary Session of the Legislature, relative to
4 congressional districts; to provide for the redistricting of Louisiana's congressional
5 districts; to provide with respect to positions and offices, other than congressional,
6 which are based upon congressional districts; to provide for effectiveness; and to
7 provide for related matters.

8 Be it enacted by the Legislature of Louisiana:

9 Section 1. R.S. 18:1276 is hereby amended and reenacted to read as follows:

10 §1276. Congressional districts

11 Louisiana shall be divided into six congressional districts, and the qualified
12 electors of each district shall elect one representative to the United States House of
13 Representatives. The districts shall be composed as follows:

14 ~~(1) District 1 is composed of Precincts 1, 2, 3, 4, 5, 7, 8, 9, 10, 11, 12, 13, 14,~~
15 ~~15, 16, 17, 18, 19, 20, 21, 22, 23, 24, 25, 26, 27, 28, 29, 30, 31, 32, 33, 34, 35, 36, 37,~~
16 ~~38, 39, 40, 41, 42, 43, 44, 45, 46, 51, 52, 53, 54, 55, 56, 57, 58, 59, 60, 61, 62, 63, 64,~~
17 ~~65, 66, 67, 68, 69, 70, 71, 72, 73, 74, 75, 76, 77, 78, 79, 80, 81, 82, 83, 84, 85, 86, 87,~~
18 ~~88, 89, 90, 91, 92, 93, 94, 95, 96, 97, 98, 99, 100, 101, 102, 103, 105, 106, 116, 117,~~
19 ~~118, 119, 120, 121, 122, 123, 124, 125A, 125B, 126, 127, 128, 129, 130, 132, 134,~~
20 ~~136, 192, 198, 199, 203, 246, 247, 248, 1-GI, 1-II, 2-II, 3-II, 4-II, 5-II, 6-II, 7-II,~~

1 ~~8-H, 9-H, 1-K, 2-K, 3-K, 4-K, 5-K, 6-KA, 6-KB, 7-KA, 7-KB, 8-K, 9-K, 10-K,~~
2 ~~11-K, 12-K, 13-KA, 14-K, 16-K, 17-K, 18-K, 19-K, 20-K, 25-K, 27-K, 28-K, 29-K,~~
3 ~~34-K, 35-K, and 1-L of Jefferson Parish; Precincts 3-2, 3-3, 3-6, 4-1, 4-2, 4-3, 4-4,~~
4 ~~4-5, 4-6, 7-3, 8-1, 9-1, 9-2, 10-1, 10-2, 10-3, 10-4, 10-5, 10-6, 10-7, 10-8, 10-9,~~
5 ~~10-10, 10-11, 10-12, 10-13, 10-14, 10-15, 10-16, 11-1, and 11-2 of Lafourche Parish;~~
6 ~~Precincts 3-20, 4-7, 4-8, 4-9, 4-11, 4-14, 4-15, 4-17, 4-17A, 4-18, 4-20, 4-21, 4-22,~~
7 ~~4-23, 5-15, 5-16, 5-17, 5-18, 7-41, 7-42, 14-2, 14-3, 14-4, 14-7, 14-8, 14-9, 14-10,~~
8 ~~14-11, 14-12, 14-13A, 14-14, 14-15, 14-16, 14-18A, 14-19, 14-21, 16-2, 16-3, 17-1,~~
9 ~~17-17, 17-18, 17-18A, 17-19, and 17-20 of Orleans Parish; Plaquemines Parish; St.~~
10 ~~Bernard Parish; St. Tammany Parish; Precincts 48, 49, 70, 70A, 71, 72, 72A, 73, 74,~~
11 ~~120, 122, 122A, 122B, 124, 124A, 137A, 141A, 145, 147, 149, 149A, and 151 of~~
12 ~~Tangipahoa Parish; and Precincts 11, 15, 19, 20, 21, 23, 25, 27, 29, 31, 32, 34, 35,~~
13 ~~36, 38, 41, 43, 45, 46, 48, 49, 52, 53, 54, 55, 56, 57, 58, 59, 60, 61, 63, 69, 71, 72, 83,~~
14 ~~85, 88, 89, 90, 110, and 111 of Terrebonne Parish.~~

15 (2) ~~District 2 is composed of Precincts 30, 36, 37, 39, 42, 44, 45, 47, 48, 50,~~
16 ~~51, 52, 53, 54, 55, 57, and 65 of Ascension Parish; Precincts 1-1, 1-2, 2-2, 4-3, 5-5,~~
17 ~~6-1, 6-2, 6-3, and 7-1 of Assumption Parish; Precincts 1-2, 1-3, 1-4, 1-5, 1-6, 1-10,~~
18 ~~1-11, 1-13, 1-14, 1-15, 1-16, 1-17, 1-18, 1-19, 1-21, 1-22, 1-23, 1-24, 1-25, 1-26,~~
19 ~~1-27, 1-28, 1-29, 1-30, 1-31, 1-32, 1-36, 1-50, 1-51, 1-58, 1-61, 1-62, 1-63, 1-67,~~
20 ~~1-77, 1-84, 1-85, 1-86, 1-91, 1-92, 1-93, 1-94, 1-95, 1-100, 1-101, 1-104, 2-1, 2-9,~~
21 ~~2-11, 2-13, 2-16, 2-20, 2-22, 2-23, 2-24, and 2-30 of East Baton Rouge Parish;~~
22 ~~Precincts 1, 3, 6, 7, 9, 10, 11, 12, 13C, 14, 14A, 15, 16, 17, 18, 19, 20, 21, 22, and~~
23 ~~23 of Iberville Parish; Precincts 104, 108, 115, 131, 133, 138, 150, 151, 152, 153,~~
24 ~~154, 155, 156, 157A, 157B, 170, 171, 172, 173, 174, 175, 176, 177, 178, 179A,~~
25 ~~179B, 180, 181, 182, 183, 184, 185A, 185B, 187, 188, 189, 190, 191, 193A, 193B,~~
26 ~~194A, 194B, 195, 196, 197A, 197B, 200, 201, 202, 204, 205, 210, 211, 212, 213A,~~
27 ~~213B, 213C, 214A, 214B, 215, 216A, 216B, 216C, 217, 225, 226, 227, 228, 229,~~
28 ~~230, 231, 232A, 232B, 234, 235, 236, 237, 238A, 238B, 1-G, 2-G, 3-G, 4-G, 5-G,~~
29 ~~6-G, 7-G, 8-G, 9-G, 10-G, 11-G, 12-G, 13-G, 13-KB, 15-K, 21-K, 22-K, 23-K, 24-K,~~

1 ~~26-K, 30-K, 31-K, 33-K, 1-W, 2-W, 3-W, 4-W, 5-W, 6-W, and 7-W of Jefferson~~
2 ~~Parish; Precincts 1-1, 1-2, 1-5, 1-6, 2-1, 2-2, 2-4, 2-6, 2-7, 3-1, 3-8, 3-9, 3-12, 3-14,~~
3 ~~3-15, 3-18, 3-19, 4-2, 4-3, 4-5, 4-6, 5-1, 5-2, 5-3, 5-5, 5-7, 5-8, 5-9, 5-10, 5-11, 5-12,~~
4 ~~5-13, 6-1, 6-2, 6-4, 6-6, 6-7, 6-8, 6-9, 7-1, 7-2, 7-4, 7-5, 7-6, 7-7, 7-8, 7-9A, 7-10,~~
5 ~~7-11, 7-12, 7-13, 7-14, 7-15, 7-16, 7-17, 7-18, 7-19, 7-20, 7-21, 7-23, 7-24, 7-25,~~
6 ~~7-25A, 7-26, 7-27, 7-27B, 7-28, 7-28A, 7-29, 7-30, 7-32, 7-33, 7-35, 7-37, 7-37A,~~
7 ~~7-40, 8-1, 8-2, 8-4, 8-6, 8-7, 8-8, 8-9, 8-12, 8-13, 8-14, 8-15, 8-19, 8-20, 8-21, 8-22,~~
8 ~~8-23, 8-24, 8-25, 8-26, 8-27, 8-28, 8-30, 9-1, 9-3, 9-4, 9-5, 9-6, 9-7, 9-8, 9-9, 9-10,~~
9 ~~9-11, 9-12, 9-13, 9-14, 9-15, 9-16, 9-17, 9-19, 9-21, 9-23, 9-25, 9-26, 9-28, 9-28C,~~
10 ~~9-29, 9-30, 9-30A, 9-31, 9-31A, 9-31B, 9-31D, 9-32, 9-33, 9-34A, 9-35, 9-35A,~~
11 ~~9-36, 9-36B, 9-37, 9-38, 9-38A, 9-39, 9-39B, 9-40, 9-40A, 9-40C, 9-41, 9-41A,~~
12 ~~9-41B, 9-41C, 9-41D, 9-42, 9-42C, 9-43A, 9-43B, 9-43C, 9-43E, 9-43F, 9-43G,~~
13 ~~9-43H, 9-43I, 9-43J, 9-43K, 9-43L, 9-43M, 9-43N, 9-44, 9-44A, 9-44B, 9-44D,~~
14 ~~9-44E, 9-44F, 9-44G, 9-44I, 9-44J, 9-44L, 9-44M, 9-44N, 9-44O, 9-44P, 9-44Q,~~
15 ~~9-45, 9-45A, 10-3, 10-6, 10-7, 10-8, 10-9, 10-11, 10-12, 10-13, 10-14, 11-2, 11-3,~~
16 ~~11-4, 11-5, 11-8, 11-9, 11-10, 11-11, 11-12, 11-13, 11-14, 11-17, 12-1, 12-2, 12-3,~~
17 ~~12-4, 12-5, 12-6, 12-7, 12-8, 12-9, 12-10, 12-11, 12-12, 12-13, 12-14, 12-16, 12-17,~~
18 ~~12-19, 13-1, 13-2, 13-3, 13-4, 13-5, 13-6, 13-7, 13-8, 13-9, 13-10, 13-11, 13-12,~~
19 ~~13-13, 13-14, 13-15, 13-16, 14-1, 14-5, 14-6, 14-17, 14-20, 14-23, 14-24A, 14-25,~~
20 ~~14-26, 15-1, 15-2, 15-3, 15-5, 15-6, 15-8, 15-9, 15-10, 15-11, 15-12, 15-12A, 15-13,~~
21 ~~15-13A, 15-13B, 15-14, 15-14A, 15-14B, 15-14C, 15-14D, 15-14E, 15-14F, 15-14G,~~
22 ~~15-15, 15-15A, 15-15B, 15-16, 15-17, 15-17A, 15-17B, 15-18, 15-18A, 15-18B,~~
23 ~~15-18C, 15-18D, 15-18E, 15-18F, 15-19, 15-19A, 15-19B, 15-19C, 16-1, 16-1A,~~
24 ~~16-4, 16-5, 16-6, 16-7, 16-8, 16-9, 17-2, 17-3, 17-4, 17-5, 17-6, 17-7, 17-8, 17-9,~~
25 ~~17-10, 17-11, 17-12, 17-13, 17-13A, 17-14, 17-15, and 17-16 of Orleans Parish;~~
26 ~~Precincts 1-1, 1-2, 1-3, 1-5, 2-1, 2-2, 2-3, 2-4, 2-5, 4-1, 4-2, 4-3, 4-4, 5-1, 5-3, 5-4,~~
27 ~~6-6, 6-7, 6-8, 7-1, 7-2, 7-3, and 7-4 of St. Charles Parish; St. James Parish; Precincts~~
28 ~~1-1, 1-2, 1-3, 1-4, 1-5, 2-1, 2-2, 2-3, 2-4, 3-1, 3-2, 3-4, 4-1, 4-2, 4-3, 4-14, 5-1, 5-8,~~

1 ~~6-1, 6-3, 6-4, and 7-7 of St. John the Baptist Parish; and Precincts 1A, 1B, 1C, 2B,~~
2 ~~6, 7B, 8, 10A, 10B, 11A, 11B, 13A, 13B, 14, and 15 of West Baton Rouge Parish.~~

3 (3) ~~District 3 is composed of Acadia Parish; Calcasieu Parish; Cameron~~
4 ~~Parish; Iberia Parish; Jefferson Davis Parish; Lafayette Parish; Precincts 3, 4, 5, 6,~~
5 ~~7, 8, 9, 10, 11, 12, 13, 14, 15, 16, 17, 18, 19, 20, 21, 22, 23, 24, 25, 26, 27, 28, and~~
6 ~~29 of St. Martin Parish; Precincts 1, 2, 3, 4, 5, 6, 7, 8, 9, 10, 11, 12, 13, 14, 15, 16,~~
7 ~~17, 18, 19, 20, 21, 22, 23, 25, 26, 27, 28, 29, 30, 31, 32, 33, 34, 35, 36, 37, 38, 39, 40,~~
8 ~~42, 43, and 44 of St. Mary Parish; and Vermilion Parish.~~

9 (4) ~~District 4 is composed of Allen Parish; Beauregard Parish; Bienville~~
10 ~~Parish; Bossier Parish; Caddo Parish; Claiborne Parish; DeSoto Parish; Evangeline~~
11 ~~Parish; Precincts 1-1, 1-2, 1-3, 2-1, 2-2, 2-3, 2-5, 3-1, 3-2, 5-3, and 7-1 of Grant~~
12 ~~Parish; Natchitoches Parish; Red River Parish; Sabine Parish; St. Landry Parish;~~
13 ~~Union Parish; Vernon Parish; and Webster Parish.~~

14 (5) ~~District 5 is composed of Avoyelles Parish; Caldwell Parish; Catahoula~~
15 ~~Parish; Concordia Parish; East Carroll Parish; East Feliciana Parish; Franklin Parish;~~
16 ~~Precincts 3-3, 4-1, 4-2, 4-3, 5-1, 5-2, 6-1, 6-2, 6-3, 6-4, 7-2, 7-3, 7-4, 8-1, 8-2, 8-3,~~
17 ~~and 8-4 of Grant Parish; Jackson Parish; LaSalle Parish; Lincoln Parish; Madison~~
18 ~~Parish; Morehouse Parish; Ouachita Parish; Pointe Coupee Parish; Rapides Parish;~~
19 ~~Richland Parish; St. Helena Parish; Precincts 1, 2, 6, 11, 15, 16, 17, 18, 26, 27, 28,~~
20 ~~33, 40, 40A, 41, 42, 42A, 43, 44, 45, 45A, 46, 47, 101, 102, 104, 104A, 105, 106,~~
21 ~~106A, 107, 108, 109, 110, 111A, 112, 114, 115B, 116, 117, 118, 119, 120A, 120B,~~
22 ~~121, 121A, 123, 125, 127, 127A, 129, 129A, 133, 133A, 137, 137B, 137C, 137D;~~
23 ~~139, 141, 143, and 143A of Tangipahoa Parish; Tensas Parish; Washington Parish;~~
24 ~~West Carroll Parish; West Feliciana Parish; and Winn Parish.~~

25 (6) ~~District 6 is composed of Precincts 1, 2, 3, 4, 5, 6, 7, 8, 9, 10, 11, 12, 13,~~
26 ~~14, 15, 16, 17, 18, 20, 21, 22, 23, 24, 25, 26, 27, 28, 31, 32, 33, 34, 35, 40, 41, 43, 58,~~
27 ~~61, 62, 63, 64, 66, 71, 72, 73, 76, 77, and 78 of Ascension Parish; Precincts 2-1, 2-3,~~
28 ~~2-4, 2-5, 3-1, 3-2, 4-1, 4-2, 5-1, 5-2, 5-3, 7-2, 7-3, 8-1, and 9-1 of Assumption Parish;~~
29 ~~Precincts 1-1, 1-7, 1-8, 1-9, 1-12, 1-20, 1-33, 1-34, 1-35, 1-37, 1-38, 1-39, 1-40,~~

1 ~~1-41, 1-42, 1-43, 1-44, 1-45, 1-46, 1-47, 1-48, 1-49, 1-52, 1-53, 1-54, 1-55, 1-56,~~
2 ~~1-57, 1-59, 1-60, 1-64, 1-65, 1-66, 1-68, 1-69, 1-70, 1-71, 1-72, 1-73, 1-74, 1-75,~~
3 ~~1-76, 1-78, 1-79, 1-80, 1-81, 1-82, 1-83, 1-87, 1-88, 1-89, 1-90, 1-97, 1-98, 1-99,~~
4 ~~1-102, 1-103, 1-105, 1-107, 2-2, 2-3, 2-4, 2-5, 2-6, 2-7, 2-8, 2-10, 2-12, 2-14, 2-15,~~
5 ~~2-17, 2-18, 2-19, 2-21, 2-25, 2-26, 2-27, 2-28, 2-29, 2-31, 2-32, 2-33, 2-34, 2-35,~~
6 ~~2-36, 2-37, 3-1, 3-2, 3-3, 3-4, 3-5, 3-6, 3-7, 3-8, 3-9, 3-10, 3-11, 3-12, 3-13, 3-14,~~
7 ~~3-15, 3-16, 3-17, 3-18, 3-19, 3-20, 3-21, 3-22, 3-23, 3-24, 3-25, 3-26, 3-27, 3-28,~~
8 ~~3-29, 3-30, 3-31, 3-32, 3-33, 3-34, 3-35, 3-36, 3-37, 3-38, 3-39, 3-40, 3-41, 3-43,~~
9 ~~3-44, 3-45, 3-46, 3-47, 3-48, 3-49, 3-50, 3-51, 3-52, 3-53, 3-54, 3-55, 3-56, 3-57,~~
10 ~~3-58, 3-59, 3-60, 3-61, 3-62, 3-63, 3-64, 3-65, 3-66, 3-67, 3-68, 3-69, 3-70, 3-71, and~~
11 ~~3-72 of East Baton Rouge Parish; Precincts 4, 5, 13, 15B, 24, 25, 26, 27, 28, 29, 31,~~
12 ~~and 32 of Iberville Parish; Precincts 1-1, 1-2, 1-3, 1-4, 1-5, 2-1, 2-1A, 2-2, 2-3, 2-3A,~~
13 ~~2-4, 2-5, 2-6, 2-7, 2-8, 2-9, 2-10, 2-11, 2-12, 2-13, 2-14, 3-1, 3-4, 3-5, 5-1, 5-1A,~~
14 ~~5-1B, 5-2, 6-1, 6-2, 6-3, 6-4, 6-5, 7-1, 7-2, 7-4, 11-3, 11-4, and 11-5 of Lafourche~~
15 ~~Parish; Livingston Parish; Precincts 1-6, 2-6, 3-1, 3-2, 3-3, 5-5, 6-1, 6-2, and 6-4 of~~
16 ~~St. Charles Parish; Precincts 4-13, 5-4, 5-7, 7-2, 7-3, and 7-5 of St. John the Baptist~~
17 ~~Parish; Precincts 1 and 2 of St. Martin Parish; Precincts 24, 41, and 45 of St. Mary~~
18 ~~Parish; Precincts 1, 4, 5, 7, 8, 9, 10, 12, 13, 14, 16, 17, 18, 51, 64, 65, 67, 68, 73, 74,~~
19 ~~76, 82, 84, 86, and 87 of Terrebonne Parish; and Precincts 2A, 3, 4, 5, 7A, 9, 12, 16,~~
20 ~~17, 18, 19, 20, 21, and 22 of West Baton Rouge Parish.~~

21 (1) District 1 is composed of Precincts 1, 2, 3, 4, 5, 7, 8, 9, 10, 11, 12, 13, 14,
22 15, 16, 17, 18, 19, 20, 21, 22, 23, 24, 25, 26, 27, 28, 29, 30, 31, 32, 33, 34, 35, 36, 37,
23 38, 39, 40, 41, 42, 43, 44, 45, 46, 51, 52, 53, 54, 55, 56, 57, 58, 59, 60, 61, 62, 63, 64,
24 65, 66, 67, 68, 69, 70, 71, 72, 73, 74, 75, 76, 77, 78, 79, 80, 81, 82, 83, 84, 85, 86, 87,
25 88, 89, 90, 91, 92, 93, 94, 95, 96, 97, 98, 99, 100, 101, 102, 103, 105, 106, 117, 118,
26 119, 120, 121, 122, 123, 124, 125A, 125B, 126, 127, 128, 129, 130, 131, 132, 133,
27 134, 136, 138, 182, 183, 184, 185A, 185B, 189, 190, 192, 193A, 193B, 194A, 194B,
28 197A, 198, 199, 202, 203, 204, 246, 247, 248, 1-H, 2-H, 3-H, 4-H, 5-H, 6-H,
29 7-H, 8-H, 9-H, 1-K, 2-K, 3-K, 4-K, 5-K, 6-KA, 6-KB, 7-KA, 7-KB, 8-K, 9-K, 10-K,

1 11-K, 12-K, 13-KA, 13-KB, 14-K, 15-K, 16-K, 17-K, 18-K, 19-K, 20-K, 25-K,
 2 27-K, 28-K, 29-K, 34-K, 35-K, and 1-L of Jefferson Parish; Precincts 10-1, 10-2,
 3 10-3, 10-4, 10-5, 10-6, 10-7, 10-8, 10-9, 10-10, 10-11, 10-12, 10-13, 10-14, 10-15,
 4 and 11-1 of Lafourche Parish; Precincts 3-20, 4-8, 4-9, 4-11, 4-14, 4-15, 4-17,
 5 4-17A, 4-18, 4-20, 4-21, 4-22, 4-23, 5-15, 5-16, 5-17, 5-18, 9-45, 9-45A, 13-1, 13-2,
 6 13-3, 13-4, 13-5, 13-6, 13-7, 13-8, 13-9, 13-10, 13-11, 13-12, 13-13, 13-14, 13-15,
 7 13-16, 14-1, 14-2, 14-3, 14-4, 14-5, 14-6, 14-7, 14-8, 14-9, 14-10, 14-11, 14-12,
 8 14-13A, 14-14, 14-15, 14-16, 14-17, 14-18A, 14-19, 14-20, 14-21, 15-19A, 16-1,
 9 16-1A, 16-2, 16-3, 16-4, 16-5, 16-6, 16-7, 16-8, 17-1, 17-2, 17-3, 17-17, 17-18,
 10 17-18A, 17-19, and 17-20 of Orleans Parish; Plaquemines Parish; St. Bernard Parish;
 11 Precincts 1-6, 2-1, 2-2, 2-3, 2-4, 2-5, 2-6, 3-1, 3-2, 3-3, 4-1, 4-2, 4-3, 4-4, 6-7, 6-8,
 12 7-1, 7-2, 7-3, and 7-4 of St. Charles Parish; St. Tammany Parish; and Washington
 13 Parish.

14 (2) District 2 is composed of Precincts 28, 30, 36 (Part) Tract 030302 -
 15 Blocks 3000, 3001, 3002, 3003, 3004, 3005, 3009, 3010, 3011, 3012, 3015, 3016,
 16 3017, 3066, and 3067; Tract 030303 - Blocks 2006, 2007, 2008, 2009, 2010, 2011,
 17 2012, 2013, 2014, 2015, 2016, 2017, 2018, 2019, 2020, 2021, 2022, 2023, 2024,
 18 2025, 2026, 2027, 2028, 2029, 2030, 2031, 2032, 2033, 2034, 2035, and 2036; Tract
 19 030304 - Blocks 1007, 1008, 1009, 1010, 1011, 1012, 1013, 1014, 1018, 1019, 1020,
 20 1021, 1022, 1023, 1024, and 1025; Tract 030406 - Blocks 2000, 2002, 2003, and
 21 2004; Tract 030600 - Blocks 4005, 4007, 4008, 4009, 4010, 4012, 4013, 4014, 4015,
 22 4016, 4017, 4018, 4019, 4020, 4021, 4022, 4023, 4024, 4025, 4026, 4027, 4032,
 23 4076, and 4077; Tract 030900 - Blocks 2000; 37, 39, 40, 42, 44, 45, 47, 48, 50, 51,
 24 52, 53, 54, 55, 57, and 65 of Ascension Parish; Precincts 1-1, 1-2, 6-1, 6-2, 6-3, and
 25 7-1 of Assumption Parish; Precincts 2-14, 2-15, 2-17, 2-21, 2-26, 2-28, 2-29, 2-32,
 26 2-35, 2-36, and 2-37 of East Baton Rouge Parish; East Feliciana Parish; Precincts
 27 104, 108, 115, 116, 150, 151, 152, 153, 154, 155, 156, 157A, 157B, 170, 171, 172,
 28 173, 174, 175, 176, 177, 178, 179A, 179B, 180, 181, 187, 188, 191, 195, 196, 197B,
 29 200, 201, 205, 210, 211, 212, 213A, 213B, 213C, 214A, 214B, 215, 216A, 216B,

1 216C, 217, 225, 226, 227, 228, 229, 230, 231, 232A, 232B, 234, 235, 236, 237,
2 238A, 238B, 1-G, 2-G, 3-G, 4-G, 5-G, 6-G, 7-G, 8-G, 9-G, 10-G, 11-G, 12-G, 13-G,
3 21-K, 22-K, 23-K, 24-K, 26-K, 30-K, 31-K, 33-K, 1-W, 2-W, 3-W, 4-W, 5-W, 6-W,
4 and 7-W of Jefferson Parish; Precincts 1-1, 1-2, 1-5, 1-6, 2-1, 2-2, 2-4, 2-6, 2-7, 3-1,
5 3-8, 3-9, 3-12, 3-14, 3-15, 3-18, 3-19, 4-2, 4-3, 4-5, 4-6, 4-7, 5-1, 5-2, 5-3, 5-5, 5-7,
6 5-8, 5-9, 5-10, 5-11, 5-12, 5-13, 6-1, 6-2, 6-4, 6-6, 6-7, 6-8, 6-9, 7-1, 7-2, 7-4, 7-5,
7 7-6, 7-7, 7-8, 7-9A, 7-10, 7-11, 7-12, 7-13, 7-14, 7-15, 7-16, 7-17, 7-18, 7-19, 7-20,
8 7-21, 7-23, 7-24, 7-25, 7-25A, 7-26, 7-27, 7-27B, 7-28, 7-28A, 7-29, 7-30, 7-32,
9 7-33, 7-35, 7-37, 7-37A, 7-40, 7-41, 7-42, 8-1, 8-2, 8-4, 8-6, 8-7, 8-8, 8-9, 8-12,
10 8-13, 8-14, 8-15, 8-19, 8-20, 8-21, 8-22, 8-23, 8-24, 8-25, 8-26, 8-27, 8-28, 8-30, 9-1,
11 9-3, 9-4, 9-5, 9-6, 9-7, 9-8, 9-9, 9-10, 9-11, 9-12, 9-13, 9-14, 9-15, 9-16, 9-17, 9-19,
12 9-21, 9-23, 9-25, 9-26, 9-28, 9-28C, 9-29, 9-30, 9-30A, 9-31, 9-31A, 9-31B, 9-31D,
13 9-32, 9-33, 9-34A, 9-35, 9-35A, 9-36, 9-36B, 9-37, 9-38, 9-38A, 9-39, 9-39B, 9-40,
14 9-40A, 9-40C, 9-41, 9-41A, 9-41B, 9-41C, 9-41D, 9-42, 9-42C, 9-43A, 9-43B,
15 9-43C, 9-43E, 9-43F, 9-43G, 9-43H, 9-43I, 9-43J, 9-43K, 9-43L, 9-43M, 9-43N,
16 9-44, 9-44A, 9-44B, 9-44D, 9-44E, 9-44F, 9-44G, 9-44I, 9-44J, 9-44L, 9-44M,
17 9-44N, 9-44O, 9-44P, 9-44Q, 10-3, 10-6, 10-7, 10-8, 10-9, 10-11, 10-12, 10-13,
18 10-14, 11-2, 11-3, 11-4, 11-5, 11-8, 11-9, 11-10, 11-11, 11-12, 11-13, 11-14, 11-17,
19 12-1, 12-2, 12-3, 12-4, 12-5, 12-6, 12-7, 12-8, 12-9, 12-10, 12-11, 12-12, 12-13,
20 12-14, 12-16, 12-17, 12-19, 14-23, 14-24A, 14-25, 14-26, 15-1, 15-2, 15-3, 15-5,
21 15-6, 15-8, 15-9, 15-10, 15-11, 15-12, 15-12A, 15-13, 15-13A, 15-13B, 15-14,
22 15-14A, 15-14B, 15-14C, 15-14D, 15-14E, 15-14F, 15-14G, 15-15, 15-15A, 15-15B,
23 15-16, 15-17, 15-17A, 15-17B, 15-18, 15-18A, 15-18B, 15-18C, 15-18D, 15-18E,
24 15-18F, 15-19, 15-19B, 15-19C, 16-9, 17-4, 17-5, 17-6, 17-7, 17-8, 17-9, 17-10,
25 17-11, 17-12, 17-13, 17-13A, 17-14, 17-15, and 17-16 of Orleans Parish; Precincts
26 1-1, 1-2, 1-3, 1-5, 5-1, 5-3, 5-4, 5-5, 6-1, 6-2, 6-4, and 6-6 of St. Charles Parish;
27 St. Helena Parish; St. James Parish; St. John the Baptist Parish; and Tangipahoa
28 Parish.

1 (3) District 3 is composed of Acadia Parish; Allen Parish; Beauregard Parish;
2 Calcasieu Parish; Cameron Parish; Precincts 1020, 1030, 1040, 1041, 1050, 1060,
3 1130, 1140, 1171, 2010, 2010A, 2020, 2030, 2040, 3010, 3020, 3030, 3031, 3032,
4 3040, 3050, 3051, 3052, 3060, 3070, 3071, 4001, 4010, 4011, 4012, 4020, 4021,
5 4030, 4040, 5004, 5010, 5020, 5030, 5040, 5041, and 5050 of Evangeline Parish;
6 Precincts 1-1, 1-3, 2-1, 2-3, 3-1, 3-2, 3-3, 4-1, 4-2, 4-3, 4-4, 5-4, 6-1, 6-5, 7-2, 10-1,
7 10-2, 10-3, 10-4, 10-7, 11-2, 12-1, 12-3, 13-1, 13-3, 14-1, and 14-3 of Iberia Parish;
8 Jefferson Davis Parish; Precincts 25, 26, 27, 28, 29, 30, 31, 32, 33, 34, 35, 36, 37, 38,
9 39, 40, 41, 42, 43, 44, 45, 46, 47, 48, 49, 65, 66, 67, 69, 70, 71, 72, 73, 74, 75, 76, 77,
10 78, 79, 80, 81, 82, 83, 84, 85, 86, 87, 88, 89, 90, 91, 92, 93, 94, 95, 96, 97, 98, 99,
11 100, 101, 102, 103, 104, 105, 106, 107, 108, 109, 110, 111, 114, 115, 116, 117, 118,
12 119, 120, 121, 124, 125, 126, 127, and 128 of Lafayette Parish; Precincts C22, C23,
13 C30, C31, C32, C33, C34, C35, C36, C37-A, C37-B, C41, C42, N6, N7, N11, N12,
14 N13-A, N13-B, N14-A, N14-B, N15, N16, N17, N18-A, N18-B, N19, N20, N21,
15 N22, N23, N24, N25, N26, S1, S2, S4, S5, S6A, S6B (Part) Tract 010501 - Blocks
16 2000, 2014, 2015, 2016, 2017, 2018, 2019, 2020, 2021, 2022, 2029, 2037, 2038,
17 2039, 2040, and 2043; Tract 010502 - Blocks 3018, 3019, 3020, 3024, 3025, 3026,
18 3027, 3028, 3029, 3030, 3036, 3037, 3041, 3042, 3057, 3062; S7, S8, S9, S10, S11,
19 S13, S14, S20, S21, S22, S23, S24, S25, S26, S27, S28, and S29 of Rapides Parish;
20 Vermilion Parish; and Precincts 1-7, 1-7A, 1-7B, 1-8, 1-8A, 1-8C, 1-8E, 1-8F, 4-2,
21 4-3, 4-3A, 4-3C, 4-3E, 4-3F, 4-3G, 4-3J, 4-3K, 4-3L, 4-3M, 4-3N, 5-1, 5-1A, 5-2,
22 5-2A, 6-1, 6-2, 6-3, 6-4, 7-1, 7-2A, 7-3, 7-4, 7-4A, 7-5, 7-5A, 7-5C, 8-1, 8-2, and 8-3
23 of Vernon Parish.

24 (4) District 4 is composed of Bienville Parish; Bossier Parish; Caddo Parish;
25 Caldwell Parish; Claiborne Parish; DeSoto Parish; Grant Parish; Jackson Parish;
26 LaSalle Parish; Lincoln Parish; Natchitoches Parish; Precincts 1, 1A, 2, 4, 6, 7, 31,
27 32, 33, 34, 35, 36, 37, 38, 39, 40, 41, 42, 43, 44, 44A, 45, 46, 47, 48, 49, 50, 51, 51A,
28 52, 52A, 53, 54, 55, 56, 56A, 57, 58, 61, 71, and 75 of Ouachita Parish; Red River
29 Parish; Sabine Parish; Union Parish; Precincts 1-1, 1-1B, 1-2, 1-2A, 1-3, 1-3B, 1-3C,

1 1-3D, 1-4, 1-4A, 1-4B, 1-4C, 1-4D, 1-5, 1-5A, 1-6, 1-6A, 1-6B, 1-9, 2-1, 2-1A, 2-2,
2 2-2A, 2-3, 2-3A, 2-4, 2-4E, 3-1, 3-2, 3-3, 3-4, 3-5, 4-1, and 7-2 of Vernon Parish;
3 Webster Parish; and Winn Parish.

4 (5) District 5 is composed of Avoyelles Parish; Catahoula Parish; Concordia
5 Parish; Precincts 1-1, 1-2, 1-3, 1-4, 1-5, 1-6, 1-9, 1-10, 1-11, 1-13, 1-14, 1-15, 1-16,
6 1-17, 1-18, 1-19, 1-20, 1-21, 1-22, 1-23, 1-24, 1-25, 1-26, 1-27, 1-28, 1-29, 1-30,
7 1-31, 1-32, 1-33, 1-36, 1-37, 1-38, 1-45, 1-46, 1-50, 1-51, 1-54, 1-55, 1-57, 1-58,
8 1-60, 1-61, 1-62, 1-63, 1-67, 1-68, 1-70, 1-71, 1-77, 1-78, 1-81, 1-82, 1-83, 1-84,
9 1-85, 1-86, 1-87, 1-88, 1-91, 1-92, 1-93, 1-94, 1-95, 1-97, 1-100, 1-101, 1-102,
10 1-104, 2-1, 2-2, 2-3, 2-4, 2-5, 2-9, 2-10, 2-11, 2-12, 2-13, 2-16, 2-18, 2-19, 2-20,
11 2-22, 2-23, 2-24, 2-25, 2-27, 2-30, 2-31, 2-34, 3-8, 3-12, 3-24, 3-28, 3-32, 3-54, and
12 3-72 of East Baton Rouge Parish; East Carroll Parish; Precincts 1010, 1031, 1080,
13 1081, 1090, 1091, 1100, 1101, 1110, 1120, 1150, 1160, 1161, 1162, and 1170 of
14 Evangeline Parish; Franklin Parish; Precincts 13C, 14, 14A, 15, 15B, 16, 17, 18, 19,
15 20, 21, 22, 23, 24, 26, 27, 28, 29, 31, and 32 of Iberville Parish; Precincts 1, 2, 3, 4,
16 5, 6, 7, 8, 9, 10, 11, 12, 13, 14, 15, 16, 17, 18, 19, 20, 21, 22, 23, 24, 51, 52, 53, 54,
17 55, 56, 57, 58, 59, 60, 61, 62, 63, 64, 68, 112, 113, 122, and 123 of Lafayette Parish;
18 Madison Parish; Morehouse Parish; Precincts 3, 5, 8, 9, 9A, 10, 11, 12, 13, 14, 15,
19 16, 17, 18, 19, 20, 21, 22, 23, 24, 25, 26, 27, 27A, 28, 29, 30, 59, 60, 62, 63, 64, 65,
20 65A, 66, 67, 68, 69, 70, 72, 73, 74, 76, 77, 78, and 79 of Ouachita Parish; Pointe
21 Coupee Parish; Precincts C1, C2, C3, C4, C5, C6, C7, C8, C9, C10, C11-A, C11-B,
22 C13, C14, C15, C17, C18, C19, C20, C21, C24, C25, C26, C27, C28, C38-A, C38-B,
23 C39, C40, N1, N2, N3, N4, N5, N8, N9, N10, N27, N28, N29, S6B (Part) Tract
24 010501 - Blocks 2041, 2044, 2045, and 2046; Tract 010502 - Blocks 3039, 3040,
25 3043, 3055, 3056, 3060, 3061, 3102; S15, S16, S17, S18, and S19 of Rapides Parish;
26 Richland Parish; St. Landry Parish; Precincts 3, 4, 7, 8, 9, 10, 11, 14, 15, 16, 17, 18,
27 19, 20, 21, 23, 24, 26, 27, 28, and 29 of St. Martin Parish; Tensas Parish; West Baton
28 Rouge Parish; West Carroll Parish; and West Feliciana Parish.

1 (6) District 6 is composed of Precincts 1, 2, 3, 4, 5, 6, 7, 8, 9, 10, 11, 12, 13,
2 14, 15, 16, 17, 18, 20, 21, 22, 23, 24, 25, 26, 27, 31, 32, 33, 34, 35, 36 (Part) Tract
3 030406 - Blocks 2001; 41, 43, 58, 61, 62, 63, 64, 66, 71, 72, 73, 76, 77, and 78 of
4 Ascension Parish; Precincts 2-1, 2-2, 2-3, 2-4, 2-5, 3-1, 3-2, 4-1, 4-2, 4-3, 5-1, 5-2,
5 5-3, 5-5, 7-2, 7-3, 8-1, and 9-1 of Assumption Parish; Precincts 1-7, 1-8, 1-12, 1-34,
6 1-35, 1-39, 1-40, 1-41, 1-42, 1-43, 1-44, 1-47, 1-48, 1-49, 1-52, 1-53, 1-56, 1-59,
7 1-64, 1-65, 1-66, 1-69, 1-72, 1-73, 1-74, 1-75, 1-76, 1-79, 1-80, 1-89, 1-90, 1-98,
8 1-99, 1-103, 1-105, 1-107, 2-6, 2-7, 2-8, 2-33, 3-1, 3-2, 3-3, 3-4, 3-5, 3-6, 3-7, 3-9,
9 3-10, 3-11, 3-13, 3-14, 3-15, 3-16, 3-17, 3-18, 3-19, 3-20, 3-21, 3-22, 3-23, 3-25,
10 3-26, 3-27, 3-29, 3-30, 3-31, 3-33, 3-34, 3-35, 3-36, 3-37, 3-38, 3-39, 3-40, 3-41,
11 3-43, 3-44, 3-45, 3-46, 3-47, 3-48, 3-49, 3-50, 3-51, 3-52, 3-53, 3-55, 3-56, 3-57,
12 3-58, 3-59, 3-60, 3-61, 3-62, 3-63, 3-64, 3-65, 3-66, 3-67, 3-68, 3-69, 3-70, and 3-71
13 of East Baton Rouge Parish; Precincts 6-3, 7-1, 7-4, 7-5, 8-2, 8-3, 9-1, 9-2, 9-4, and
14 9-5 of Iberia Parish; Precincts 1, 3, 4, 5, 6, 7, 9, 10, 11, 12, 13, and 25 of Iberville
15 Parish; Precincts 1-1, 1-2, 1-3, 1-4, 1-5, 2-1, 2-1A, 2-2, 2-3, 2-3A, 2-4, 2-5, 2-6, 2-7,
16 2-8, 2-9, 2-10, 2-11, 2-12, 2-13, 2-14, 3-1, 3-2, 3-3, 3-4, 3-5, 3-6, 4-1, 4-2, 4-3, 4-4,
17 4-5, 4-6, 5-1, 5-1A, 5-1B, 5-2, 6-1, 6-2, 6-3, 6-4, 6-5, 7-1, 7-2, 7-3, 7-4, 8-1, 9-1, 9-2,
18 10-16, 11-2, 11-3, 11-4, and 11-5 of Lafourche Parish; Livingston Parish; Precincts
19 1, 2, 5, 6, 12, 13, 22, and 25 of St. Martin Parish; St. Mary Parish; and Terrebonne
20 Parish.

21 Section 2. Section 4 and Subsection B of Section 5 of Act No. 5 of the 2022 First
22 Extraordinary Session of the Legislature are hereby repealed in their entirety.

23 Section 3.(A) The precincts referenced in this Act are those precincts identified as
24 Voting Districts (VTDs) in the 2020 Census Redistricting TIGER/Line Shapefiles for the
25 State of Louisiana as validated through the data verification program of the Louisiana House
26 of Representatives and the Louisiana Senate and available on the legislature's website on the
27 effective date of this Section.

28 (B) When a precinct referenced in this Act has been subdivided by action of the
29 parish governing authority on a nongeographic basis or subdivided by action of the parish

1 governing authority on a geographic basis in accordance with the provisions of R.S.
2 18:532.1, the enumeration in this Act of the general precinct designation shall include all
3 nongeographic and all geographic subdivisions thereof, however such subdivisions may be
4 designated.

5 (C) The territorial limits of the districts as provided in this Act shall continue in
6 effect until changed by law regardless of any subsequent change made to the precincts by
7 the parish governing authority.

8 Section 4. The provisions of this Act shall not reduce the term of office of any
9 person holding any position or office on the effective date of this Section for which the
10 appointment or election is based upon a congressional district as composed pursuant to R.S.
11 18:1276.1. Any position or office that is filled by appointment or election based on a
12 congressional district and that is to be filled after January 3, 2023, shall be appointed or
13 elected from a district as it is described in Section 1 of this Act.

14 Section 5.(A) Solely for the purposes of qualifying for election and the election of
15 representatives to the United States Congress at the regularly scheduled election for
16 representatives to the congress in 2022, the provisions of Section 1 of this Act shall become
17 effective upon signature of this Act by the governor or, if not signed by the governor, upon
18 expiration of the time for bills to become law without signature by the governor, as provided
19 in Article III, Section 18 of the Constitution of Louisiana. If this Act is vetoed by the
20 governor and subsequently approved by the legislature, the provisions of Section 1 of this
21 Act shall become effective on the day following such approval for the purposes established
22 in this Subsection.

23 (B) For subsequent elections of representatives to the United States Congress and
24 for all other purposes, the provisions of Section 1 of this Act shall become effective at noon
25 on January 3, 2023.

26 (C) The provisions of this Section and Sections 2, 3, and 4 of this Act shall become
27 effective upon signature of this Act by the governor or, if not signed by the governor, upon
28 expiration of the time for bills to become law without signature by the governor, as provided
29 in Article III, Section 18 of the Constitution of Louisiana. If this Act is vetoed by the

- 1 governor and subsequently approved by the legislature, the provisions of this Section and
2 Sections 2, 3, and 4 of this Act shall become effective on the day following such approval.

DIGEST

The digest printed below was prepared by House Legislative Services. It constitutes no part of the legislative instrument. The keyword, one-liner, abstract, and digest do not constitute part of the law or proof or indicia of legislative intent. [R.S. 1:13(B) and 24:177(E)]

HB 3 Original

2022 Second Extraordinary Session

Ivey

Abstract: Provides for the redistricting of the state's congressional districts and provides for the composition of each of the six congressional districts. Effective for election purposes only for the regular congressional elections in 2022 and for all other purposes at noon on Jan. 3, 2023.

Statistical summaries of proposed law, including district variances from the ideal population of 776,292 and the range of those variances, as well as maps illustrating proposed district boundaries accompany this digest. (*Attached to the bill version on the internet.*)

Present U.S. Constitution (14th Amendment) provides that representatives in congress shall be apportioned among the several states according to their respective numbers, counting the whole number of persons in each state. The U.S. Supreme Court has held that the population of congressional districts in the same state must be as nearly equal in population as practicable.

Proposed law redraws district boundaries for the six congressional districts, effective upon signature of the governor or lapse of time for gubernatorial action for purposes of the 2022 election.

Proposed law provides for its effectiveness in lieu of Act No. 5 of the 2022 1st E.S., which also redrew district boundaries for the six congressional districts based on 2020 Census Redistricting Data.

Proposed law retains present law districts based on 2010 Census Redistricting Data until noon on Jan. 3, 2023, at which time present law is repealed and proposed districts are effective for all other purposes.

Proposed law specifies that precincts referenced in district descriptions are those precincts identified as Voting Districts (VTDs) in the 2020 Census Redistricting TIGER/Line Shapefiles for the state of La. as validated through the data verification program of the La. legislature. Also specifies that if any such precinct has been subdivided by action of the parish governing authority on a nongeographic basis or subdivided by action of the parish governing authority on a geographic basis in accordance with present law, the enumeration of the general precinct designation shall include all nongeographic and all geographic subdivisions thereof. Further provides that the territorial limits of the districts as enacted shall continue in effect until changed by law regardless of any subsequent change made to the precincts by the parish governing authority.

Proposed law specifies that proposed law does not reduce the term of office of any person holding any position or office on the effective date of proposed law for which the appointment or election is based upon a congressional district as composed pursuant to present law. Specifies that any position or office filled after Jan. 3, 2023, for which the appointment or election is based on a congressional district shall be appointed or elected from a district as it is described in proposed law.

Population data in the summaries accompanying this digest are derived from 2020 Census Redistricting Data (Public Law 94-171), Summary File for Louisiana. Population data, statistical information, and maps are supplied for purposes of information and analysis and comprise no part of proposed law.

Effective for election purposes only for the regular congressional elections in 2022; effective for all other purposes at noon on Jan. 3, 2023.

(Amends R.S. 18:1276; Repeals §§4 and 5(B) of Act No. 5 of the 2022 1st E.S.)

Plan Statistics

Plan: 222ES -8 (Ivey) Original

<u>Districts:</u>	<u># of Members</u>	<u>Actual Population</u>	<u>Ideal Population</u>	<u>Absolute Deviation</u>	<u>Relative Deviation</u>
District 1	1	776,309	776,292	17	0.002%
District 2	1	776,290	776,292	-2	0.000%
District 3	1	776,286	776,292	-6	-0.001%
District 4	1	776,290	776,292	-2	0.000%
District 5	1	776,282	776,292	-10	-0.001%
District 6	1	776,300	776,292	8	0.001%
Grand Total:	6	4,657,757	4,657,752		

Ideal Population Per Member: 776292
 Number of Districts for Plan Type: 6
 Range of District Populations: 776,282 to 776,309
 Absolute Mean Deviation: 4
 Absolute Range: -10 to 17
 Absolute Overall Range: 27
 Relative Mean Deviation: 0.00%
 Relative Range: 0.00% to 0.00%
 Relative Overall Range: 0.00%

<i>Ideal - Actual:</i>	-5
<i>Remainder:</i>	5
<i>Unassigned Population:</i>	0

Total Population

Plan: 222ES -8 (Ivey) Original

	Total Population	Total White	Total Black	Total Asian	Total American Indian	Total Other	Total Hispanic	VAP Total	VAP White	VAP Black	VAP Asian	VAP American Indian	VAP Other	VAP Hispanic Total
District 1	776,309	531,457	125,691	26,652	16,408	76,101	95,688	604,300	428,263	89,634	19,717	12,079	54,607	67,750
	100.000%	68.459%	16.191%	3.433%	2.114%	9.803%	12.326%	100.000%	70.869%	14.833%	3.263%	1.999%	9.036%	11.211%
District 2	776,290	270,291	424,438	21,622	9,526	50,413	64,766	599,650	225,624	313,827	17,289	7,349	35,561	44,797
	100.000%	34.818%	54.675%	2.785%	1.227%	6.494%	8.343%	100.000%	37.626%	52.335%	2.883%	1.226%	5.930%	7.471%
District 3	776,286	551,032	159,341	17,740	13,792	34,381	42,352	586,699	428,670	110,942	12,849	10,153	24,085	29,074
	100.000%	70.983%	20.526%	2.285%	1.777%	4.429%	5.456%	100.000%	73.065%	18.910%	2.190%	1.731%	4.105%	4.956%
District 4	776,290	455,336	261,781	12,062	18,036	29,075	34,832	596,256	362,802	190,125	8,884	13,734	20,711	24,176
	100.000%	58.655%	33.722%	1.554%	2.323%	3.745%	4.487%	100.000%	60.847%	31.886%	1.490%	2.303%	3.474%	4.055%
District 5	776,282	313,735	420,090	9,913	7,662	24,882	29,658	590,249	255,090	303,787	7,628	5,724	18,020	21,055
	100.000%	40.415%	54.116%	1.277%	0.987%	3.205%	3.821%	100.000%	43.217%	51.468%	1.292%	0.970%	3.053%	3.567%
District 6	776,300	535,801	151,778	19,299	21,636	47,786	55,253	593,394	424,062	107,454	14,049	15,201	32,628	36,810
	100.000%	69.020%	19.551%	2.486%	2.787%	6.156%	7.117%	100.000%	71.464%	18.108%	2.368%	2.562%	5.499%	6.203%
Grand Total	4,657,757	2,657,652	1,543,119	107,288	87,060	262,638	322,549	3,570,548	2,124,511	1,115,769	80,416	64,240	185,612	223,662
	100.000%	57.059%	33.130%	2.303%	1.869%	5.639%	6.925%	100.000%	59.501%	31.249%	2.252%	1.799%	5.198%	6.264%

Voter Registration

Plan: 222ES -8 (Ivey) Original

	Reg Total Dec 2021	Reg White Dec 2021	Reg Black Dec 2021	Reg Other Dec 2021	Reg Dem Total Dec 2021	Reg Rep Total Dec 2021	Reg Other Total Dec 2021
District 1	498,984	387,742	66,056	45,186	150,321	200,223	148,440
	82.572%	77.706%	13.238%	9.056%	30.125%	40.126%	29.748%
District 2	488,549	186,087	266,241	36,220	284,465	80,517	123,566
	81.472%	38.090%	54.496%	7.414%	58.227%	16.481%	25.292%
District 3	467,733	364,563	82,185	20,985	148,240	191,648	127,843
	79.723%	77.943%	17.571%	4.487%	31.693%	40.974%	27.332%
District 4	476,916	308,229	148,886	19,801	174,034	183,855	119,027
	79.985%	64.630%	31.218%	4.152%	36.492%	38.551%	24.958%
District 5	487,265	213,250	259,001	15,014	261,901	112,167	113,199
	82.552%	43.765%	53.154%	3.081%	53.749%	23.020%	23.232%
District 6	474,899	368,118	80,379	26,403	142,043	200,370	132,487
	80.031%	77.515%	16.925%	5.560%	29.910%	42.192%	27.898%
Grand Total	2,894,346	1,827,989	902,748	163,609	1,161,004	968,780	764,562

Splits

Plan: 222ES -8 (Ivey) Original

	Total Population	Total White	Total Black	Total Asian	Total American Indian	Total Other	VAP Total	VAP White	VAP Black	VAP Asian	VAP American Indian	VAP Other	Reg Total Dec 2021	Reg White Dec 2021	Reg Black Dec 2021	Reg Other Dec 2021
District 1																
*Jefferson	273,540	171,926	40,199	14,108	5,134	42,173	218,139	143,555	29,457	10,650	3,848	30,629	168,364	127,700	18,745	21,919
*Lafourche	19,258	15,161	568	324	1,720	1,485	14,667	11,950	336	248	1,167	966	11,112	10,077	170	865
*Orleans	71,977	54,482	8,665	2,993	859	4,978	59,712	45,594	7,239	2,335	691	3,853	50,593	39,681	5,481	5,431
Plaquemines	23,515	14,287	5,428	1,317	697	1,786	17,334	10,856	3,857	925	500	1,196	13,908	9,513	3,134	1,261
St. Bernard	43,764	24,497	12,309	1,381	947	4,630	31,775	18,992	7,944	982	688	3,169	25,653	18,233	5,497	1,923
*St. Charles	34,222	24,520	6,445	539	655	2,063	25,494	18,952	4,308	348	463	1,423	22,988	17,979	3,785	1,224
St. Tammany	264,570	196,641	38,643	5,774	5,660	17,852	202,228	154,621	26,761	4,075	4,161	12,610	178,779	145,724	21,142	11,913
Washington	45,463	29,943	13,434	216	736	1,134	34,951	23,743	9,732	154	561	761	27,587	18,835	8,102	650
District 1	776,309	531,457	125,691	26,652	16,408	76,101	604,300	428,263	89,634	19,717	12,079	54,607	498,984	387,742	66,056	45,186
	100.000%	68.459%	16.191%	3.433%	2.114%	9.803%	100.000%	70.869%	14.833%	3.263%	1.999%	9.036%	82.572%	77.706%	13.238%	9.056%
District 2																
*Ascension	24,815	7,353	15,717	179	215	1,351	18,189	5,982	11,024	131	143	909	15,673	5,261	9,785	626
*Assumption	5,985	2,474	3,338	21	34	118	4,704	1,984	2,577	14	24	105	4,282	1,698	2,536	48
*East Baton Rouge	21,617	9,216	11,369	278	251	503	15,566	6,963	7,857	193	186	367	14,153	6,605	7,022	526
East Feliciana	19,539	11,516	7,341	91	262	329	16,183	9,740	5,918	61	198	266	13,600	7,959	5,186	455
*Jefferson	167,241	49,009	86,018	8,916	2,552	20,746	126,515	40,580	62,718	7,042	1,987	14,188	94,737	31,916	50,831	11,990
*Orleans	312,020	71,980	210,304	9,863	2,807	17,066	246,484	64,658	158,829	8,185	2,257	12,555	205,651	52,305	136,044	17,302
*St. Charles	18,327	9,030	7,483	298	270	1,246	14,047	7,202	5,582	181	204	878	11,997	6,330	5,012	655
St. Helena	10,920	4,527	6,031	39	134	189	8,463	3,805	4,371	28	109	150	8,321	3,628	4,565	128
St. James	20,192	9,973	9,762	60	82	315	15,505	7,883	7,297	31	64	230	14,966	7,254	7,501	211
St. John the Baptist	42,477	13,877	25,196	403	465	2,536	32,503	11,622	18,437	323	350	1,771	28,913	10,219	17,234	1,460
Tangipahoa	133,157	81,336	41,879	1,474	2,454	6,014	101,491	65,205	29,217	1,100	1,827	4,142	76,256	52,912	20,525	2,819
District 2	776,290	270,291	424,438	21,622	9,526	50,413	599,650	225,624	313,827	17,289	7,349	35,561	488,549	186,087	266,241	36,220
	100.000%	34.818%	54.675%	2.785%	1.227%	6.494%	100.000%	37.626%	52.335%	2.883%	1.226%	5.930%	81.472%	38.090%	54.496%	7.414%
District 3																
Acadia	57,576	44,480	10,864	238	573	1,421	42,943	34,071	7,383	173	400	916	37,678	30,555	6,407	716
Allen	22,750	16,327	4,490	246	947	740	17,510	12,751	3,275	182	646	656	12,201	9,478	2,217	506
Beauregard	36,549	29,529	4,649	402	1,052	917	27,489	22,304	3,495	269	773	648	22,294	18,771	2,369	1,154
Calcasieu	216,785	139,772	59,386	4,702	3,536	9,389	163,166	108,789	41,898	3,359	2,604	6,516	120,511	85,659	29,513	5,339
Cameron	5,617	5,232	125	30	75	155	4,358	4,100	79	23	47	109	4,789	4,610	88	91
*Evangeline	23,892	18,460	3,851	176	242	1,163	18,117	14,060	2,723	132	190	1,012	15,047	12,607	2,170	270
*Iberia	53,427	26,589	21,790	1,850	593	2,605	40,258	21,483	15,127	1,395	428	1,825	32,748	18,701	12,524	1,523
Jefferson Davis	32,250	25,066	5,837	183	472	692	24,039	19,121	4,006	111	325	476	20,013	16,350	3,202	461
*Lafayette	170,390	125,633	25,993	5,874	2,565	10,325	130,427	99,150	17,864	4,263	1,952	7,198	108,694	89,725	12,482	6,487
*Rapides	71,804	55,410	9,580	1,680	2,196	2,938	54,937	43,408	6,687	1,219	1,661	1,962	45,609	38,285	5,152	2,172

Splits

Plan: 222ES -8 (Ivey) Original

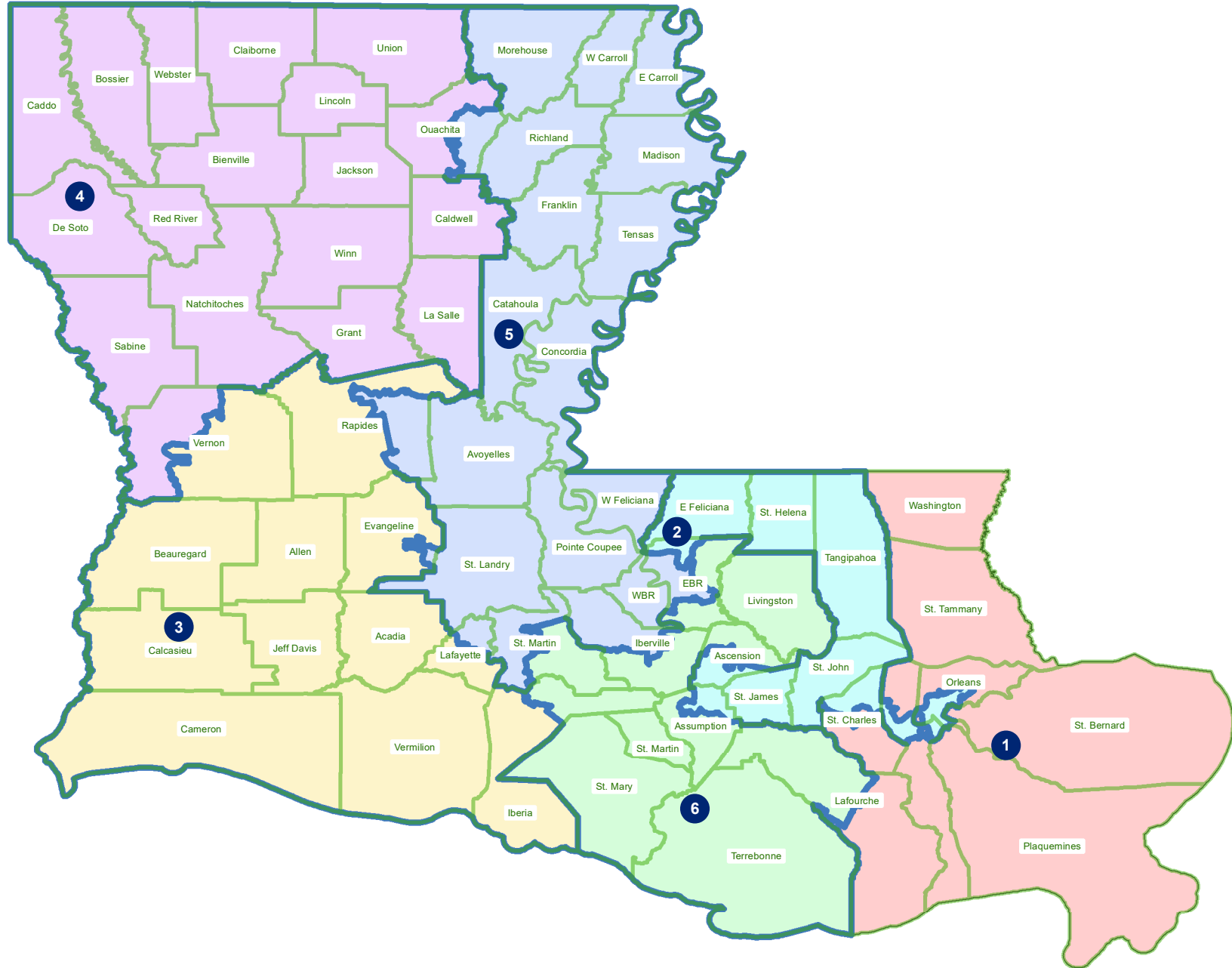
	Total Population	Total White	Total Black	Total Asian	Total American Indian	Total Other	VAP Total	VAP White	VAP Black	VAP Asian	VAP American Indian	VAP Other	Reg Total Dec 2021	Reg White Dec 2021	Reg Black Dec 2021	Reg Other Dec 2021
District 3																
Vermilion	57,359	44,477	8,810	1,447	623	2,002	43,012	34,363	5,787	1,037	488	1,337	36,769	30,505	4,994	1,270
*Vernon	27,887	20,057	3,966	912	918	2,034	20,443	15,070	2,618	686	639	1,430	11,380	9,317	1,067	996
District 3	776,286	551,032	159,341	17,740	13,792	34,381	586,699	428,670	110,942	12,849	10,153	24,085	467,733	364,563	82,185	20,985
	100.000%	70.983%	20.526%	2.285%	1.777%	4.429%	100.000%	73.065%	18.910%	2.190%	1.731%	4.105%	79.723%	77.943%	17.571%	4.487%
District 4																
Bienville	12,981	6,950	5,600	57	207	167	10,073	5,486	4,284	30	162	111	8,847	4,843	3,917	87
Bossier	128,746	81,052	32,551	3,492	3,273	8,378	95,876	62,931	22,440	2,448	2,477	5,580	69,743	50,861	14,838	4,044
Caddo	237,848	103,457	119,304	4,034	3,840	7,213	182,407	85,059	86,359	3,008	2,958	5,023	151,296	73,113	71,249	6,934
Caldwell	9,645	7,646	1,632	51	150	166	7,478	5,969	1,224	46	116	123	6,031	5,124	818	89
Claiborne	14,170	7,263	6,360	88	185	274	11,507	6,258	4,824	55	140	230	8,598	4,632	3,820	146
De Soto	26,812	15,284	9,973	117	740	698	20,440	11,909	7,425	86	557	463	18,713	11,330	6,810	573
Grant	22,169	17,709	3,335	133	644	348	17,527	13,964	2,717	97	507	242	12,688	11,174	1,176	338
Jackson	15,031	9,967	4,166	175	255	468	11,783	7,967	3,125	140	174	377	9,449	6,647	2,610	192
La Salle	14,791	11,348	1,422	283	372	1,366	11,563	8,636	1,065	264	271	1,327	8,792	7,978	637	177
Lincoln	48,396	26,034	19,364	892	662	1,444	38,655	21,306	15,119	744	526	960	25,649	15,672	9,016	961
Natchitoches	37,515	19,361	15,725	255	861	1,313	29,349	16,010	11,415	198	683	1,043	23,107	12,850	9,224	1,033
*Ouachita	85,719	69,215	10,107	1,356	1,983	3,058	64,711	53,337	6,774	948	1,537	2,115	54,781	47,995	4,902	1,884
Red River	7,620	4,195	3,106	25	171	123	5,714	3,338	2,164	3	116	93	5,631	3,130	2,418	83
Sabine	22,155	15,036	3,861	94	2,723	441	17,064	12,054	2,655	66	1,970	319	14,547	11,023	2,184	1,340
Union	21,107	14,460	5,224	62	338	1,023	16,632	11,807	3,861	39	254	671	15,221	11,066	3,692	463
*Vernon	20,863	15,030	3,645	530	682	976	15,818	11,695	2,515	388	521	699	12,680	9,865	1,944	871
Webster	36,967	22,735	12,679	208	687	658	28,753	18,144	9,464	154	558	433	22,737	14,938	7,339	460
Winn	13,755	8,594	3,727	210	263	961	10,906	6,932	2,695	170	207	902	8,406	5,988	2,292	126
District 4	776,290	455,336	261,781	12,062	18,036	29,075	596,256	362,802	190,125	8,884	13,734	20,711	476,916	308,229	148,886	19,801
	100.000%	58.655%	33.722%	1.554%	2.323%	3.745%	100.000%	60.847%	31.886%	1.490%	2.303%	3.474%	79.985%	64.630%	31.218%	4.152%
District 5																
Avoyelles	39,693	25,625	11,678	434	767	1,189	30,578	20,269	8,311	379	570	1,049	23,426	16,534	6,294	598
Catahoula	8,906	5,776	2,395	46	119	570	6,951	4,557	1,736	33	87	538	6,467	4,639	1,770	58
Concordia	18,687	10,275	7,725	122	233	332	14,217	8,108	5,613	100	167	229	11,964	7,222	4,540	202
*East Baton Rouge	192,121	31,624	145,755	4,533	1,173	9,036	146,490	28,124	107,519	3,552	938	6,357	112,976	19,631	88,109	5,236
East Carroll	7,459	2,054	5,272	29	43	61	5,901	1,773	4,043	19	27	39	4,709	1,306	3,359	44
*Evangeline	8,458	2,894	5,384	65	38	77	6,291	2,400	3,760	55	27	49	5,506	1,959	3,473	74
Franklin	19,774	12,492	6,802	70	205	205	15,028	9,901	4,779	44	153	151	13,159	9,015	4,034	110
*Iberville	16,487	7,917	7,877	106	169	418	12,885	6,497	5,852	78	135	323	12,274	6,016	6,023	235
*Lafayette	71,363	27,730	39,143	580	645	3,265	53,448	22,458	28,053	401	435	2,101	44,799	18,920	23,999	1,880

Splits

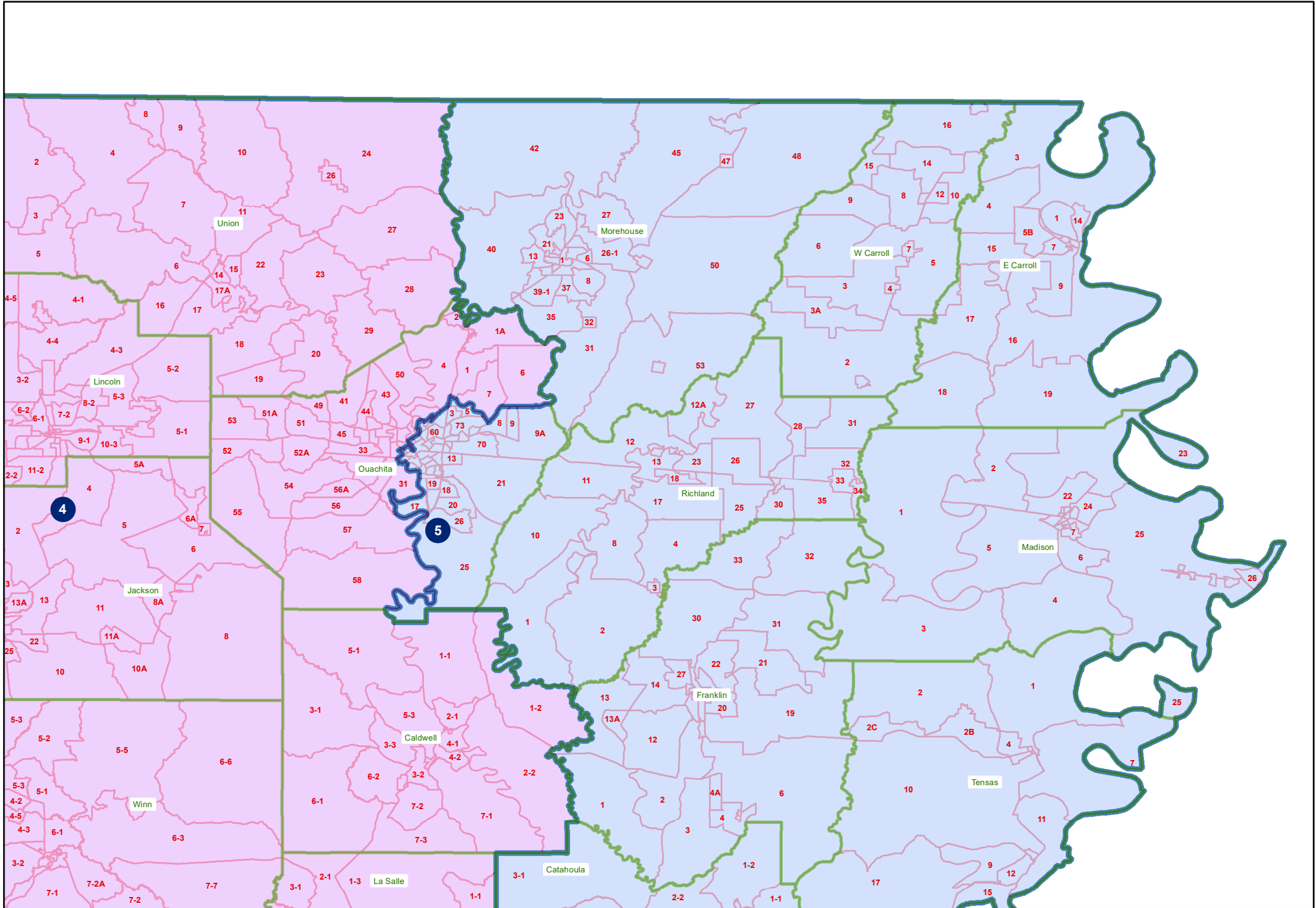
Plan: 222ES -8 (Ivey) Original

	Total Population	Total White	Total Black	Total Asian	Total American Indian	Total Other	VAP Total	VAP White	VAP Black	VAP Asian	VAP American Indian	VAP Other	Reg Total Dec 2021	Reg White Dec 2021	Reg Black Dec 2021	Reg Other Dec 2021
District 5																
Madison	10,017	3,475	6,363	20	59	100	7,435	2,906	4,391	9	48	81	7,278	2,494	4,674	110
Morehouse	25,629	12,281	12,484	160	370	334	20,062	10,095	9,300	117	279	271	16,922	8,505	8,131	286
*Ouachita	74,649	19,330	51,110	1,432	678	2,099	55,489	16,637	35,516	1,170	522	1,644	44,971	12,520	30,756	1,695
Pointe Coupee	20,758	12,395	7,504	107	159	593	16,250	10,108	5,502	91	119	430	14,675	9,320	5,121	234
*Rapides	58,219	22,100	33,012	748	906	1,453	43,855	17,965	23,518	567	673	1,132	34,567	14,547	18,623	1,397
Richland	20,043	11,785	7,603	83	258	314	15,383	9,338	5,546	66	203	230	13,662	8,470	4,961	231
St. Landry	82,540	43,611	35,836	499	636	1,958	61,811	34,209	25,497	353	451	1,301	54,482	30,093	23,005	1,384
*St. Martin	45,072	27,543	15,500	453	447	1,129	34,099	21,647	11,013	297	338	804	30,387	19,614	10,127	646
Tensas	4,147	1,744	2,312	23	26	42	3,235	1,446	1,728	12	23	26	3,455	1,503	1,917	35
West Baton Rouge	27,199	14,307	11,170	287	326	1,109	20,526	11,146	8,149	209	219	803	17,141	9,937	6,865	339
West Carroll	9,751	7,894	1,425	27	180	225	7,532	6,223	1,010	20	136	143	7,038	5,913	1,040	85
West Feliciana	15,310	10,883	3,740	89	225	373	12,783	9,283	2,951	56	174	319	7,407	5,092	2,180	135
District 5	776,282	313,735	420,090	9,913	7,662	24,882	590,249	255,090	303,787	7,628	5,724	18,020	487,265	213,250	259,001	15,014
	100.000%	40.415%	54.116%	1.277%	0.987%	3.205%	100.000%	43.217%	51.468%	1.292%	0.970%	3.053%	82.552%	43.765%	53.154%	3.081%
District 6																
*Ascension	101,685	73,788	16,499	2,121	1,789	7,488	73,768	55,154	11,115	1,383	1,247	4,869	64,244	51,539	9,029	3,677
*Assumption	15,054	11,248	2,882	75	224	625	11,912	9,161	2,130	43	173	405	10,157	8,002	1,974	181
*East Baton Rouge	243,043	155,229	56,274	11,614	3,303	16,623	193,556	128,794	41,414	8,854	2,623	11,871	152,135	111,996	29,544	10,595
*Iberia	16,502	12,617	2,766	273	201	645	12,533	9,812	1,942	167	153	459	11,778	9,586	1,828	364
*Iberville	13,754	6,916	5,853	96	105	784	11,201	5,965	4,380	71	86	699	8,188	4,116	3,874	198
*Lafourche	78,299	56,549	15,287	701	2,504	3,258	59,952	44,888	10,741	490	1,610	2,223	47,166	38,390	6,994	1,782
Livingston	142,282	116,855	12,658	1,697	3,111	7,961	105,141	88,432	8,136	1,099	2,311	5,163	84,568	76,062	5,425	3,081
*St. Martin	6,695	5,716	421	144	92	322	5,305	4,631	280	110	75	209	4,733	4,320	254	159
St. Mary	49,406	26,949	15,991	835	1,670	3,961	37,521	21,594	11,520	593	1,173	2,641	30,210	18,712	9,891	1,607
Terrebonne	109,580	69,934	23,147	1,743	8,637	6,119	82,505	55,631	15,796	1,239	5,750	4,089	61,720	45,395	11,566	4,759
District 6	776,300	535,801	151,778	19,299	21,636	47,786	593,394	424,062	107,454	14,049	15,201	32,628	474,899	368,118	80,379	26,403
	100.000%	69.020%	19.551%	2.486%	2.787%	6.156%	100.000%	71.464%	18.108%	2.368%	2.562%	5.499%	80.031%	77.515%	16.925%	5.560%

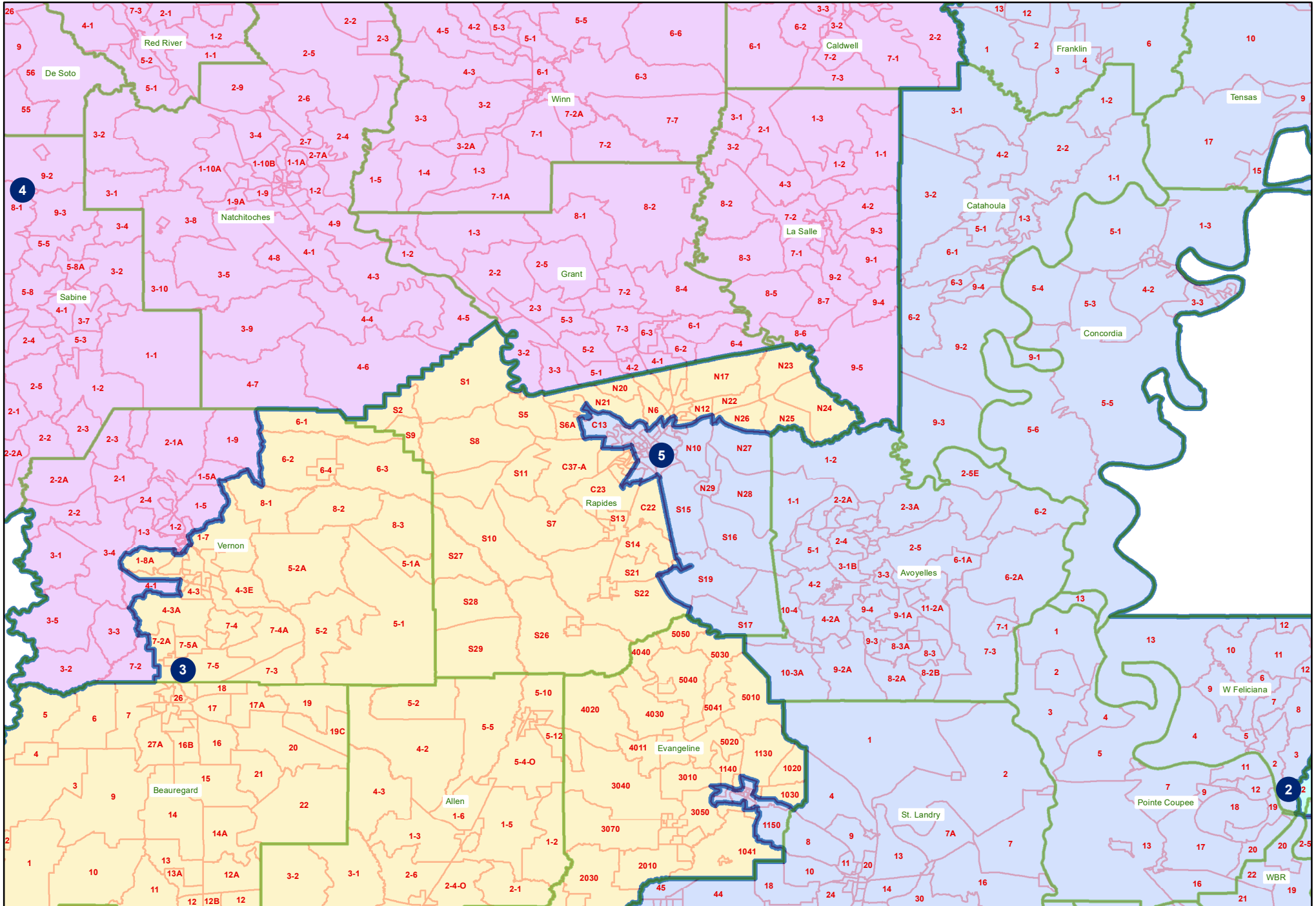
222ES -8 (Ivey) Original
Statewide



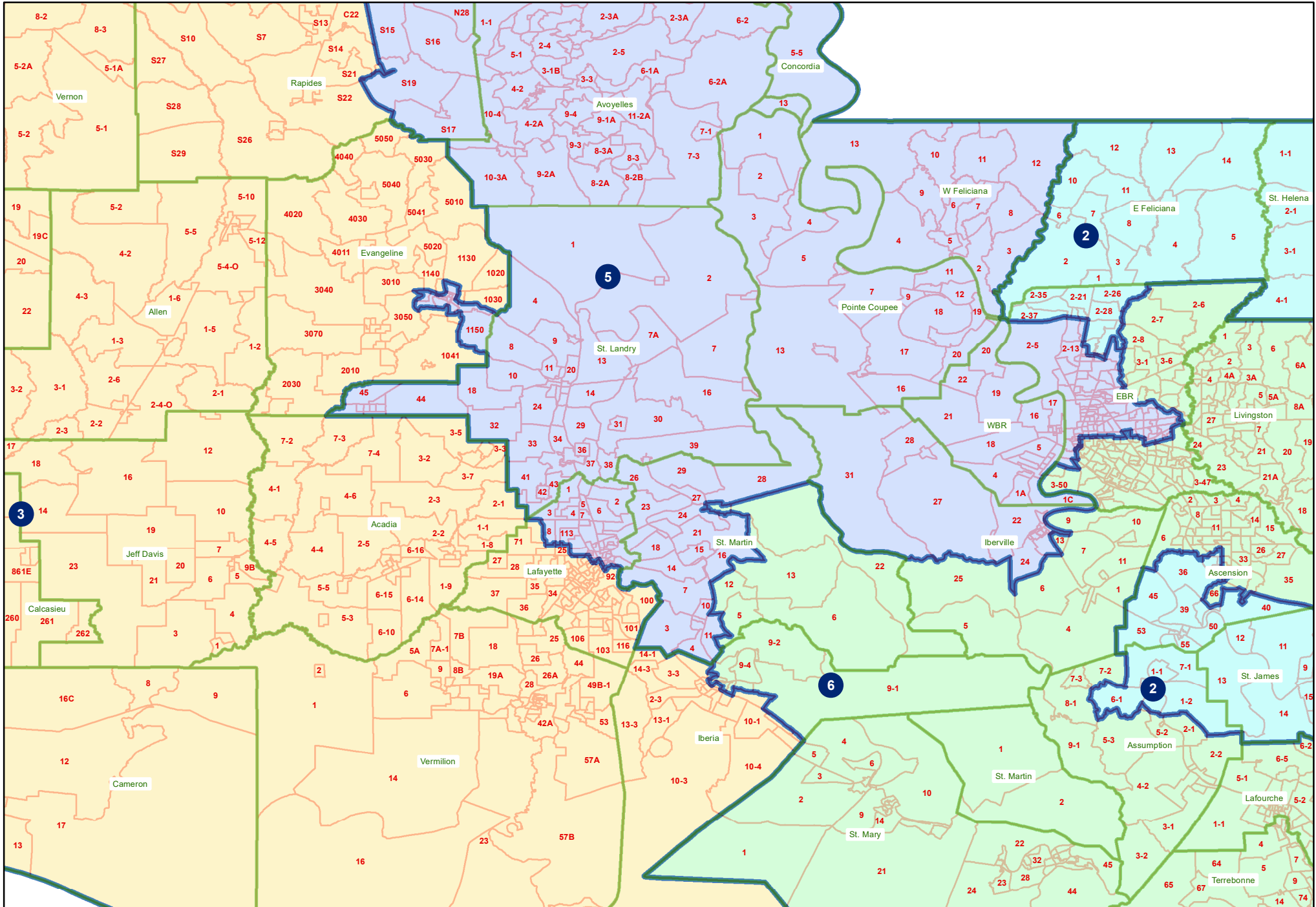
222ES -8 (Ivey) Original Northeast



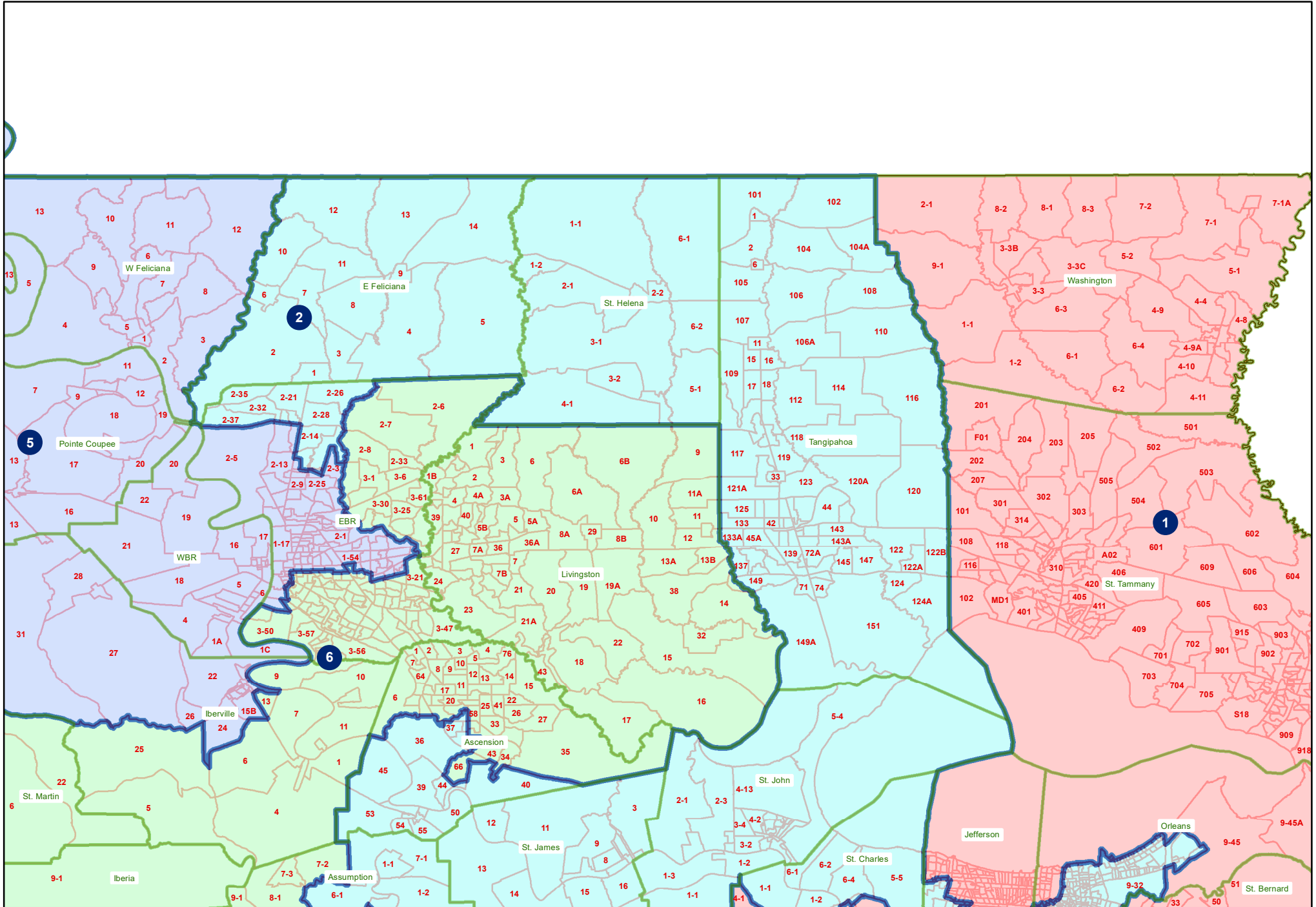
222ES -8 (Ivey) Original Central



222ES -8 (Ivey) Original Acadiana



222ES -8 (Ivey) Original Florida Parishes



222ES -8 (Ivey) Original
Orleans and Jefferson

