

2022 Second Extraordinary Session

HOUSE BILL NO. 4

BY REPRESENTATIVE IVEY

CONGRESS/DISTRICTS: Provides relative to the districts for elected members of the United States Congress

1 AN ACT

2 To amend and reenact R.S. 18:1276 and to repeal Section 4 and Subsection B of Section 5
3 of Act No. 5 of the 2022 First Extraordinary Session of the Legislature, relative to
4 congressional districts; to provide for the redistricting of Louisiana's congressional
5 districts; to provide with respect to positions and offices, other than congressional,
6 which are based upon congressional districts; to provide for effectiveness; and to
7 provide for related matters.

8 Be it enacted by the Legislature of Louisiana:

9 Section 1. R.S. 18:1276 is hereby amended and reenacted to read as follows:

10 §1276. Congressional districts

11 Louisiana shall be divided into six congressional districts, and the qualified
12 electors of each district shall elect one representative to the United States House of
13 Representatives. The districts shall be composed as follows:

14 ~~(1) District 1 is composed of Precincts 1, 2, 3, 4, 5, 7, 8, 9, 10, 11, 12, 13, 14,~~
15 ~~15, 16, 17, 18, 19, 20, 21, 22, 23, 24, 25, 26, 27, 28, 29, 30, 31, 32, 33, 34, 35, 36, 37,~~
16 ~~38, 39, 40, 41, 42, 43, 44, 45, 46, 51, 52, 53, 54, 55, 56, 57, 58, 59, 60, 61, 62, 63, 64,~~
17 ~~65, 66, 67, 68, 69, 70, 71, 72, 73, 74, 75, 76, 77, 78, 79, 80, 81, 82, 83, 84, 85, 86, 87,~~
18 ~~88, 89, 90, 91, 92, 93, 94, 95, 96, 97, 98, 99, 100, 101, 102, 103, 105, 106, 116, 117,~~
19 ~~118, 119, 120, 121, 122, 123, 124, 125A, 125B, 126, 127, 128, 129, 130, 132, 134,~~
20 ~~136, 192, 198, 199, 203, 246, 247, 248, 1-GI, 1-II, 2-II, 3-II, 4-II, 5-II, 6-II, 7-II,~~

1 ~~8-H, 9-H, 1-K, 2-K, 3-K, 4-K, 5-K, 6-KA, 6-KB, 7-KA, 7-KB, 8-K, 9-K, 10-K,~~
2 ~~11-K, 12-K, 13-KA, 14-K, 16-K, 17-K, 18-K, 19-K, 20-K, 25-K, 27-K, 28-K, 29-K,~~
3 ~~34-K, 35-K, and 1-L of Jefferson Parish; Precincts 3-2, 3-3, 3-6, 4-1, 4-2, 4-3, 4-4,~~
4 ~~4-5, 4-6, 7-3, 8-1, 9-1, 9-2, 10-1, 10-2, 10-3, 10-4, 10-5, 10-6, 10-7, 10-8, 10-9,~~
5 ~~10-10, 10-11, 10-12, 10-13, 10-14, 10-15, 10-16, 11-1, and 11-2 of Lafourche Parish;~~
6 ~~Precincts 3-20, 4-7, 4-8, 4-9, 4-11, 4-14, 4-15, 4-17, 4-17A, 4-18, 4-20, 4-21, 4-22,~~
7 ~~4-23, 5-15, 5-16, 5-17, 5-18, 7-41, 7-42, 14-2, 14-3, 14-4, 14-7, 14-8, 14-9, 14-10,~~
8 ~~14-11, 14-12, 14-13A, 14-14, 14-15, 14-16, 14-18A, 14-19, 14-21, 16-2, 16-3, 17-1,~~
9 ~~17-17, 17-18, 17-18A, 17-19, and 17-20 of Orleans Parish; Plaquemines Parish; St.~~
10 ~~Bernard Parish; St. Tammany Parish; Precincts 48, 49, 70, 70A, 71, 72, 72A, 73, 74,~~
11 ~~120, 122, 122A, 122B, 124, 124A, 137A, 141A, 145, 147, 149, 149A, and 151 of~~
12 ~~Tangipahoa Parish; and Precincts 11, 15, 19, 20, 21, 23, 25, 27, 29, 31, 32, 34, 35,~~
13 ~~36, 38, 41, 43, 45, 46, 48, 49, 52, 53, 54, 55, 56, 57, 58, 59, 60, 61, 63, 69, 71, 72, 83,~~
14 ~~85, 88, 89, 90, 110, and 111 of Terrebonne Parish.~~

15 (2) ~~District 2 is composed of Precincts 30, 36, 37, 39, 42, 44, 45, 47, 48, 50,~~
16 ~~51, 52, 53, 54, 55, 57, and 65 of Ascension Parish; Precincts 1-1, 1-2, 2-2, 4-3, 5-5,~~
17 ~~6-1, 6-2, 6-3, and 7-1 of Assumption Parish; Precincts 1-2, 1-3, 1-4, 1-5, 1-6, 1-10,~~
18 ~~1-11, 1-13, 1-14, 1-15, 1-16, 1-17, 1-18, 1-19, 1-21, 1-22, 1-23, 1-24, 1-25, 1-26,~~
19 ~~1-27, 1-28, 1-29, 1-30, 1-31, 1-32, 1-36, 1-50, 1-51, 1-58, 1-61, 1-62, 1-63, 1-67,~~
20 ~~1-77, 1-84, 1-85, 1-86, 1-91, 1-92, 1-93, 1-94, 1-95, 1-100, 1-101, 1-104, 2-1, 2-9,~~
21 ~~2-11, 2-13, 2-16, 2-20, 2-22, 2-23, 2-24, and 2-30 of East Baton Rouge Parish;~~
22 ~~Precincts 1, 3, 6, 7, 9, 10, 11, 12, 13C, 14, 14A, 15, 16, 17, 18, 19, 20, 21, 22, and~~
23 ~~23 of Iberville Parish; Precincts 104, 108, 115, 131, 133, 138, 150, 151, 152, 153,~~
24 ~~154, 155, 156, 157A, 157B, 170, 171, 172, 173, 174, 175, 176, 177, 178, 179A,~~
25 ~~179B, 180, 181, 182, 183, 184, 185A, 185B, 187, 188, 189, 190, 191, 193A, 193B,~~
26 ~~194A, 194B, 195, 196, 197A, 197B, 200, 201, 202, 204, 205, 210, 211, 212, 213A,~~
27 ~~213B, 213C, 214A, 214B, 215, 216A, 216B, 216C, 217, 225, 226, 227, 228, 229,~~
28 ~~230, 231, 232A, 232B, 234, 235, 236, 237, 238A, 238B, 1-G, 2-G, 3-G, 4-G, 5-G,~~
29 ~~6-G, 7-G, 8-G, 9-G, 10-G, 11-G, 12-G, 13-G, 13-KB, 15-K, 21-K, 22-K, 23-K, 24-K,~~

1 ~~26-K, 30-K, 31-K, 33-K, 1-W, 2-W, 3-W, 4-W, 5-W, 6-W, and 7-W of Jefferson~~
 2 ~~Parish; Precincts 1-1, 1-2, 1-5, 1-6, 2-1, 2-2, 2-4, 2-6, 2-7, 3-1, 3-8, 3-9, 3-12, 3-14,~~
 3 ~~3-15, 3-18, 3-19, 4-2, 4-3, 4-5, 4-6, 5-1, 5-2, 5-3, 5-5, 5-7, 5-8, 5-9, 5-10, 5-11, 5-12,~~
 4 ~~5-13, 6-1, 6-2, 6-4, 6-6, 6-7, 6-8, 6-9, 7-1, 7-2, 7-4, 7-5, 7-6, 7-7, 7-8, 7-9A, 7-10,~~
 5 ~~7-11, 7-12, 7-13, 7-14, 7-15, 7-16, 7-17, 7-18, 7-19, 7-20, 7-21, 7-23, 7-24, 7-25,~~
 6 ~~7-25A, 7-26, 7-27, 7-27B, 7-28, 7-28A, 7-29, 7-30, 7-32, 7-33, 7-35, 7-37, 7-37A,~~
 7 ~~7-40, 8-1, 8-2, 8-4, 8-6, 8-7, 8-8, 8-9, 8-12, 8-13, 8-14, 8-15, 8-19, 8-20, 8-21, 8-22,~~
 8 ~~8-23, 8-24, 8-25, 8-26, 8-27, 8-28, 8-30, 9-1, 9-3, 9-4, 9-5, 9-6, 9-7, 9-8, 9-9, 9-10,~~
 9 ~~9-11, 9-12, 9-13, 9-14, 9-15, 9-16, 9-17, 9-19, 9-21, 9-23, 9-25, 9-26, 9-28, 9-28C,~~
 10 ~~9-29, 9-30, 9-30A, 9-31, 9-31A, 9-31B, 9-31D, 9-32, 9-33, 9-34A, 9-35, 9-35A,~~
 11 ~~9-36, 9-36B, 9-37, 9-38, 9-38A, 9-39, 9-39B, 9-40, 9-40A, 9-40C, 9-41, 9-41A,~~
 12 ~~9-41B, 9-41C, 9-41D, 9-42, 9-42C, 9-43A, 9-43B, 9-43C, 9-43E, 9-43F, 9-43G,~~
 13 ~~9-43H, 9-43I, 9-43J, 9-43K, 9-43L, 9-43M, 9-43N, 9-44, 9-44A, 9-44B, 9-44D,~~
 14 ~~9-44E, 9-44F, 9-44G, 9-44I, 9-44J, 9-44L, 9-44M, 9-44N, 9-44O, 9-44P, 9-44Q,~~
 15 ~~9-45, 9-45A, 10-3, 10-6, 10-7, 10-8, 10-9, 10-11, 10-12, 10-13, 10-14, 11-2, 11-3,~~
 16 ~~11-4, 11-5, 11-8, 11-9, 11-10, 11-11, 11-12, 11-13, 11-14, 11-17, 12-1, 12-2, 12-3,~~
 17 ~~12-4, 12-5, 12-6, 12-7, 12-8, 12-9, 12-10, 12-11, 12-12, 12-13, 12-14, 12-16, 12-17,~~
 18 ~~12-19, 13-1, 13-2, 13-3, 13-4, 13-5, 13-6, 13-7, 13-8, 13-9, 13-10, 13-11, 13-12,~~
 19 ~~13-13, 13-14, 13-15, 13-16, 14-1, 14-5, 14-6, 14-17, 14-20, 14-23, 14-24A, 14-25,~~
 20 ~~14-26, 15-1, 15-2, 15-3, 15-5, 15-6, 15-8, 15-9, 15-10, 15-11, 15-12, 15-12A, 15-13,~~
 21 ~~15-13A, 15-13B, 15-14, 15-14A, 15-14B, 15-14C, 15-14D, 15-14E, 15-14F, 15-14G,~~
 22 ~~15-15, 15-15A, 15-15B, 15-16, 15-17, 15-17A, 15-17B, 15-18, 15-18A, 15-18B,~~
 23 ~~15-18C, 15-18D, 15-18E, 15-18F, 15-19, 15-19A, 15-19B, 15-19C, 16-1, 16-1A,~~
 24 ~~16-4, 16-5, 16-6, 16-7, 16-8, 16-9, 17-2, 17-3, 17-4, 17-5, 17-6, 17-7, 17-8, 17-9,~~
 25 ~~17-10, 17-11, 17-12, 17-13, 17-13A, 17-14, 17-15, and 17-16 of Orleans Parish;~~
 26 ~~Precincts 1-1, 1-2, 1-3, 1-5, 2-1, 2-2, 2-3, 2-4, 2-5, 4-1, 4-2, 4-3, 4-4, 5-1, 5-3, 5-4,~~
 27 ~~6-6, 6-7, 6-8, 7-1, 7-2, 7-3, and 7-4 of St. Charles Parish; St. James Parish; Precincts~~
 28 ~~1-1, 1-2, 1-3, 1-4, 1-5, 2-1, 2-2, 2-3, 2-4, 3-1, 3-2, 3-4, 4-1, 4-2, 4-3, 4-14, 5-1, 5-8,~~

1 ~~6-1, 6-3, 6-4, and 7-7 of St. John the Baptist Parish; and Precincts 1A, 1B, 1C, 2B,~~
2 ~~6, 7B, 8, 10A, 10B, 11A, 11B, 13A, 13B, 14, and 15 of West Baton Rouge Parish.~~

3 (3) ~~District 3 is composed of Acadia Parish; Calcasieu Parish; Cameron~~
4 ~~Parish; Iberia Parish; Jefferson Davis Parish; Lafayette Parish; Precincts 3, 4, 5, 6,~~
5 ~~7, 8, 9, 10, 11, 12, 13, 14, 15, 16, 17, 18, 19, 20, 21, 22, 23, 24, 25, 26, 27, 28, and~~
6 ~~29 of St. Martin Parish; Precincts 1, 2, 3, 4, 5, 6, 7, 8, 9, 10, 11, 12, 13, 14, 15, 16,~~
7 ~~17, 18, 19, 20, 21, 22, 23, 25, 26, 27, 28, 29, 30, 31, 32, 33, 34, 35, 36, 37, 38, 39, 40,~~
8 ~~42, 43, and 44 of St. Mary Parish; and Vermilion Parish.~~

9 (4) ~~District 4 is composed of Allen Parish; Beauregard Parish; Bienville~~
10 ~~Parish; Bossier Parish; Caddo Parish; Claiborne Parish; DeSoto Parish; Evangeline~~
11 ~~Parish; Precincts 1-1, 1-2, 1-3, 2-1, 2-2, 2-3, 2-5, 3-1, 3-2, 5-3, and 7-1 of Grant~~
12 ~~Parish; Natchitoches Parish; Red River Parish; Sabine Parish; St. Landry Parish;~~
13 ~~Union Parish; Vernon Parish; and Webster Parish.~~

14 (5) ~~District 5 is composed of Avoyelles Parish; Caldwell Parish; Catahoula~~
15 ~~Parish; Concordia Parish; East Carroll Parish; East Feliciana Parish; Franklin Parish;~~
16 ~~Precincts 3-3, 4-1, 4-2, 4-3, 5-1, 5-2, 6-1, 6-2, 6-3, 6-4, 7-2, 7-3, 7-4, 8-1, 8-2, 8-3,~~
17 ~~and 8-4 of Grant Parish; Jackson Parish; LaSalle Parish; Lincoln Parish; Madison~~
18 ~~Parish; Morehouse Parish; Ouachita Parish; Pointe Coupee Parish; Rapides Parish;~~
19 ~~Richland Parish; St. Helena Parish; Precincts 1, 2, 6, 11, 15, 16, 17, 18, 26, 27, 28,~~
20 ~~33, 40, 40A, 41, 42, 42A, 43, 44, 45, 45A, 46, 47, 101, 102, 104, 104A, 105, 106,~~
21 ~~106A, 107, 108, 109, 110, 111A, 112, 114, 115B, 116, 117, 118, 119, 120A, 120B,~~
22 ~~121, 121A, 123, 125, 127, 127A, 129, 129A, 133, 133A, 137, 137B, 137C, 137D,~~
23 ~~139, 141, 143, and 143A of Tangipahoa Parish; Tensas Parish; Washington Parish;~~
24 ~~West Carroll Parish; West Feliciana Parish; and Winn Parish.~~

25 (6) ~~District 6 is composed of Precincts 1, 2, 3, 4, 5, 6, 7, 8, 9, 10, 11, 12, 13,~~
26 ~~14, 15, 16, 17, 18, 20, 21, 22, 23, 24, 25, 26, 27, 28, 31, 32, 33, 34, 35, 40, 41, 43, 58,~~
27 ~~61, 62, 63, 64, 66, 71, 72, 73, 76, 77, and 78 of Ascension Parish; Precincts 2-1, 2-3,~~
28 ~~2-4, 2-5, 3-1, 3-2, 4-1, 4-2, 5-1, 5-2, 5-3, 7-2, 7-3, 8-1, and 9-1 of Assumption Parish;~~
29 ~~Precincts 1-1, 1-7, 1-8, 1-9, 1-12, 1-20, 1-33, 1-34, 1-35, 1-37, 1-38, 1-39, 1-40,~~

1 ~~1-41, 1-42, 1-43, 1-44, 1-45, 1-46, 1-47, 1-48, 1-49, 1-52, 1-53, 1-54, 1-55, 1-56,~~
2 ~~1-57, 1-59, 1-60, 1-64, 1-65, 1-66, 1-68, 1-69, 1-70, 1-71, 1-72, 1-73, 1-74, 1-75,~~
3 ~~1-76, 1-78, 1-79, 1-80, 1-81, 1-82, 1-83, 1-87, 1-88, 1-89, 1-90, 1-97, 1-98, 1-99,~~
4 ~~1-102, 1-103, 1-105, 1-107, 2-2, 2-3, 2-4, 2-5, 2-6, 2-7, 2-8, 2-10, 2-12, 2-14, 2-15,~~
5 ~~2-17, 2-18, 2-19, 2-21, 2-25, 2-26, 2-27, 2-28, 2-29, 2-31, 2-32, 2-33, 2-34, 2-35,~~
6 ~~2-36, 2-37, 3-1, 3-2, 3-3, 3-4, 3-5, 3-6, 3-7, 3-8, 3-9, 3-10, 3-11, 3-12, 3-13, 3-14,~~
7 ~~3-15, 3-16, 3-17, 3-18, 3-19, 3-20, 3-21, 3-22, 3-23, 3-24, 3-25, 3-26, 3-27, 3-28,~~
8 ~~3-29, 3-30, 3-31, 3-32, 3-33, 3-34, 3-35, 3-36, 3-37, 3-38, 3-39, 3-40, 3-41, 3-43,~~
9 ~~3-44, 3-45, 3-46, 3-47, 3-48, 3-49, 3-50, 3-51, 3-52, 3-53, 3-54, 3-55, 3-56, 3-57,~~
10 ~~3-58, 3-59, 3-60, 3-61, 3-62, 3-63, 3-64, 3-65, 3-66, 3-67, 3-68, 3-69, 3-70, 3-71, and~~
11 ~~3-72 of East Baton Rouge Parish; Precincts 4, 5, 13, 15B, 24, 25, 26, 27, 28, 29, 31,~~
12 ~~and 32 of Iberville Parish; Precincts 1-1, 1-2, 1-3, 1-4, 1-5, 2-1, 2-1A, 2-2, 2-3, 2-3A,~~
13 ~~2-4, 2-5, 2-6, 2-7, 2-8, 2-9, 2-10, 2-11, 2-12, 2-13, 2-14, 3-1, 3-4, 3-5, 5-1, 5-1A,~~
14 ~~5-1B, 5-2, 6-1, 6-2, 6-3, 6-4, 6-5, 7-1, 7-2, 7-4, 11-3, 11-4, and 11-5 of Lafourche~~
15 ~~Parish; Livingston Parish; Precincts 1-6, 2-6, 3-1, 3-2, 3-3, 5-5, 6-1, 6-2, and 6-4 of~~
16 ~~St. Charles Parish; Precincts 4-13, 5-4, 5-7, 7-2, 7-3, and 7-5 of St. John the Baptist~~
17 ~~Parish; Precincts 1 and 2 of St. Martin Parish; Precincts 24, 41, and 45 of St. Mary~~
18 ~~Parish; Precincts 1, 4, 5, 7, 8, 9, 10, 12, 13, 14, 16, 17, 18, 51, 64, 65, 67, 68, 73, 74,~~
19 ~~76, 82, 84, 86, and 87 of Terrebonne Parish; and Precincts 2A, 3, 4, 5, 7A, 9, 12, 16,~~
20 ~~17, 18, 19, 20, 21, and 22 of West Baton Rouge Parish.~~

21 (1) District 1 is composed of Precincts 1, 2, 3, 4, 5, 7, 8, 9, 10, 11, 12, 13, 14,
22 15, 16, 17, 18, 19, 20, 21, 22, 23, 24, 25, 26, 27, 28, 29, 30, 31, 32, 33, 34, 35, 36, 37,
23 38, 39, 40, 41, 42, 43, 44, 45, 46, 51, 52, 53, 54, 55, 56, 57, 58, 59, 60, 61, 62, 63, 64,
24 65, 66, 67, 68, 69, 70, 71, 72, 73, 74, 75, 76, 77, 78, 79, 80, 81, 82, 83, 84, 85, 86, 87,
25 88, 89, 90, 91, 92, 93, 94, 95, 96, 97, 98, 99, 100, 101, 102, 103, 105, 106, 117, 118,
26 119, 120, 121, 122, 123, 124, 126, 127, 128, 129, 130, 132, 134, 136, 192, 198, 199,
27 246, 247, 248, 1-GI, 1-H, 2-H, 3-H, 4-H, 5-H, 6-H, 7-H, 8-H, 9-H, 1-K, 2-K, 3-K,
28 4-K, 5-K, 6-KA, 6-KB, 7-KA, 7-KB, 8-K, 9-K, 10-K, 11-K, 12-K, 13-KA, 14-K,
29 16-K, 17-K, 18-K, 19-K, 20-K, 25-K, 27-K, 28-K, 34-K, 35-K and 1-L of Jefferson

1 Parish; Precincts 3-6, 4-1, 4-2, 4-3, 4-4, 4-5, 4-6, 8-1, 9-1, 9-2, 10-1, 10-2, 10-3,
2 10-4, 10-5, 10-6, 10-7, 10-8, 10-9, 10-10, 10-11, 10-12, 10-13, 10-14, 10-15, 10-16,
3 11-1 and 11-2 of Lafourche Parish; Precincts 3-20, 4-8, 4-9, 4-11, 4-14, 4-15, 4-17,
4 4-17A, 4-18, 4-20, 4-21, 4-22, 4-23, 5-16, 5-17, 5-18, 17-17, 17-18, 17-18A, 17-19
5 and 17-20 of Orleans Parish; Plaquemines Parish; Precincts 31, 32, 33, 34, 40, 41,
6 42, 42A, 43, 44, 45, 46, 50, 51, 52, 53, 54 and 55 of St. Bernard Parish; St. Tammany
7 Parish; Precincts 16, 43, 44, 49, 70, 70A, 71, 72, 72A, 73, 74, 102, 104A, 106 (Part)
8 Tract 953501 - Blocks 2001, 2005, 2006, 2007, 2008, 2014, 2015, 2016, 2017, 2018,
9 2019, 3001, 3002, 3003, 3004, 3005, 3006, 3007, 3008, 3009, 3010, 3011, 3014,
10 3015, 3016, 3017, 3020, 3025; 106A, 108, 110, 112, 114, 116, 118, 120, 120A,
11 120B, 122, 122A, 122B, 123, 124, 124A, 129, 129A, 139, 141, 141A, 143, 143A,
12 145, 147, 149, 149A and 151 of Tangipahoa Parish; Precincts 15, 21, 23, 25, 27, 29,
13 31, 32, 34, 35, 36, 38, 41, 43, 45, 46, 48, 49, 55, 59, 69, 83, 84, 85, 88, 89, 110 and
14 111 of Terrebonne Parish and Washington Parish.

15 (2) District 2 is composed of Precincts 28, 30, 31, 36, 37, 39, 40, 42, 44, 45,
16 47, 48, 50, 51, 52, 53, 54, 55, 57, 65 and 66 of Ascension Parish; Precincts 1-1, 1-2,
17 2-2, 4-3, 5-5, 6-1, 6-2, 6-3, 7-1 and 7-2 of Assumption Parish; Precincts 3-57 of East
18 Baton Rouge Parish; Precincts 1, 3, 4, 6, 7, 9, 10, 11, 12, 13, 13C, 14, 14A, 15, 15B,
19 16, 17, 18, 19, 20, 21, 22, 23, 24 and 26 of Iberville Parish; Precincts 104, 108, 115,
20 116, 125A, 125B, 131, 133, 138, 150, 151, 152, 153, 154, 155, 156, 157A, 157B,
21 170, 171, 172, 173, 174, 175, 176, 177, 178, 179A, 179B, 180, 181, 182, 183, 184,
22 185A, 185B, 187, 188, 189, 190, 191, 193A, 193B, 194A, 194B, 195, 196, 197A,
23 197B, 200, 201, 202, 203, 204, 205, 210, 211, 212, 213A, 213B, 213C, 214A, 214B,
24 215, 216A, 216B, 216C, 217, 225, 226, 227, 228, 229, 230, 231, 232A, 232B, 234,
25 235, 236, 237, 238A, 238B, 1-G, 2-G, 3-G, 4-G, 5-G, 6-G, 7-G, 8-G, 9-G, 10-G,
26 11-G, 12-G, 13-G, 13-KB, 15-K, 21-K, 22-K, 23-K, 24-K, 26-K, 29-K, 30-K, 31-K,
27 33-K, 1-W, 2-W, 3-W, 4-W, 5-W, 6-W and 7-W of Jefferson Parish; Precincts 1-1,
28 1-2, 1-5, 1-6, 2-1, 2-2, 2-4, 2-6, 2-7, 3-1, 3-8, 3-9, 3-12, 3-14, 3-15, 3-18, 3-19, 4-2,
29 4-3, 4-5, 4-6, 4-7, 5-1, 5-2, 5-3, 5-5, 5-7, 5-8, 5-9, 5-10, 5-11, 5-12, 5-13, 5-15, 6-1,

1 6-2, 6-4, 6-6, 6-7, 6-8, 6-9, 7-1, 7-2, 7-4, 7-5, 7-6, 7-7, 7-8, 7-9A, 7-10, 7-11, 7-12,
 2 7-13, 7-14, 7-15, 7-16, 7-17, 7-18, 7-19, 7-20, 7-21, 7-23, 7-24, 7-25, 7-25A, 7-26,
 3 7-27, 7-27B, 7-28, 7-28A, 7-29, 7-30, 7-32, 7-33, 7-35, 7-37, 7-37A, 7-40, 7-41,
 4 7-42, 8-1, 8-2, 8-4, 8-6, 8-7, 8-8, 8-9, 8-12, 8-13, 8-14, 8-15, 8-19, 8-20, 8-21, 8-22,
 5 8-23, 8-24, 8-25, 8-26, 8-27, 8-28, 8-30, 9-1, 9-3, 9-4, 9-5, 9-6, 9-7, 9-8, 9-9, 9-10,
 6 9-11, 9-12, 9-13, 9-14, 9-15, 9-16, 9-17, 9-19, 9-21, 9-23, 9-25, 9-26, 9-28, 9-28C,
 7 9-29, 9-30, 9-30A, 9-31, 9-31A, 9-31B, 9-31D, 9-32, 9-33, 9-34A, 9-35, 9-35A,
 8 9-36, 9-36B, 9-37, 9-38, 9-38A, 9-39, 9-39B, 9-40, 9-40A, 9-40C, 9-41, 9-41A,
 9 9-41B, 9-41C, 9-41D, 9-42, 9-42C, 9-43A, 9-43B, 9-43C, 9-43E, 9-43F, 9-43G,
 10 9-43H, 9-43I, 9-43J, 9-43K, 9-43L, 9-43M, 9-43N, 9-44, 9-44A, 9-44B, 9-44D,
 11 9-44E, 9-44F, 9-44G, 9-44I, 9-44J, 9-44L, 9-44M, 9-44N, 9-44O, 9-44P, 9-44Q,
 12 9-45, 9-45A, 10-3, 10-6, 10-7, 10-8, 10-9, 10-11, 10-12, 10-13, 10-14, 11-2, 11-3,
 13 11-4, 11-5, 11-8, 11-9, 11-10, 11-11, 11-12, 11-13, 11-14, 11-17, 12-1, 12-2, 12-3,
 14 12-4, 12-5, 12-6, 12-7, 12-8, 12-9, 12-10, 12-11, 12-12, 12-13, 12-14, 12-16, 12-17,
 15 12-19, 13-1, 13-2, 13-3, 13-4, 13-5, 13-6, 13-7, 13-8, 13-9, 13-10, 13-11, 13-12,
 16 13-13, 13-14, 13-15, 13-16, 14-1, 14-2, 14-3, 14-4, 14-5, 14-6, 14-7, 14-8, 14-9,
 17 14-10, 14-11, 14-12, 14-13A, 14-14, 14-15, 14-16, 14-17, 14-18A, 14-19, 14-20,
 18 14-21, 14-23, 14-24A, 14-25, 14-26, 15-1, 15-2, 15-3, 15-5, 15-6, 15-8, 15-9, 15-10,
 19 15-11, 15-12, 15-12A, 15-13, 15-13A, 15-13B, 15-14, 15-14A, 15-14B, 15-14C,
 20 15-14D, 15-14E, 15-14F, 15-14G, 15-15, 15-15A, 15-15B, 15-16, 15-17, 15-17A,
 21 15-17B, 15-18, 15-18A, 15-18B, 15-18C, 15-18D, 15-18E, 15-18F, 15-19, 15-19A,
 22 15-19B, 15-19C, 16-1, 16-1A, 16-2, 16-3, 16-4, 16-5, 16-6, 16-7, 16-8, 16-9, 17-1,
 23 17-2, 17-3, 17-4, 17-5, 17-6, 17-7, 17-8, 17-9, 17-10, 17-11, 17-12, 17-13, 17-13A,
 24 17-14, 17-15 and 17-16 of Orleans Parish; Precincts 10, 11, 12, 13, 14, 15, 20, 21,
 25 22, 23, 24, 25 and 30 of St. Bernard Parish; St. Charles Parish; St. James Parish;
 26 St. John the Baptist Parish and Precincts 1A, 1B, 1C, 2A, 2B, 3, 4 and 8 of West
 27 Baton Rouge Parish.
 28 (3) District 3 is composed of Acadia Parish; Precincts 1-2, 2-1, 2-2, 2-2-A,
 29 2-3, 2-4-C, 2-4-O, 2-5, 2-6, 3-1 and 3-2 of Allen Parish; Precincts 10-2A of

1 Avoyelles Parish; Calcasieu Parish; Cameron Parish; Precincts 1020, 1030, 1040,
2 1041, 1050, 1060, 1091, 1130, 1140, 1161, 2010, 2010A, 2020, 2030, 2040, 3010,
3 3020, 3030, 3031, 3032, 3040, 3050, 3051, 3052, 3060, 3070, 3071, 4001, 4010,
4 4011, 4012, 4020, 4021, 4030, 4040, 5004, 5010, 5020, 5030, 5040, 5041 and 5050
5 of Evangeline Parish; Precincts 1-1, 1-3, 2-1, 2-3, 3-1, 3-2, 3-3, 4-1, 4-2, 4-3, 4-4,
6 5-4, 6-1, 6-3, 6-5, 7-1, 7-2, 7-4, 7-5, 8-2, 8-3, 10-1, 10-2, 10-3, 10-4, 10-7, 11-2,
7 12-1, 12-3, 13-1, 13-3, 14-1 and 14-3 of Iberia Parish; Jefferson Davis Parish;
8 Lafayette Parish; Precincts 4, 45, 46, 47 and 52 of St. Landry Parish; Precincts 3, 4,
9 8, 9, 10 and 11 of St. Martin Parish; St. Mary Parish and Vermilion Parish.

10 (4) District 4 is composed of Precincts 1-1, 1-3, 1-4, 1-5, 1-6, 4-2, 4-3, 5-2,
11 5-3, 5-4-C, 5-4-O, 5-5, 5-7, 5-8A, 5-9, 5-10, 5-12 and 5-13 of Allen Parish; Precincts
12 1-1, 1-2, 1-3, 2-2, 2-2A, 2-2C, 2-2D, 2-2F, 3-1B, 4-1, 4-2, 4-2A, 5-1, 5-1A, 9-4 and
13 9-4B of Avoyelles Parish; Beauregard Parish; Precincts 1-3, 1-4, 2-3, 3-4, 3-5, 3-6,
14 4-1, 4-2, 4-4, 5-1, 5-2, 5-3, 5-4, 6-1, 6-2, 6-3, 6-4, 7-1, 7-2, 7-3, 7-4 and 7-5 of
15 Bienville Parish; Bossier Parish; Caddo Parish; Precincts 1, 3, 5, 7, 21, 31, 34, 35,
16 36, 37, 41, 42, 51, 85, 88, 91, 92 and 96 of Claiborne Parish; DeSoto Parish;
17 Precincts 1-1, 1-2, 1-3, 2-1 (Part) Tract 020200 - Blocks 2058, 2059 and 2060; Tract
18 020300 - Blocks 2004, 2005, 2006, 2007, 2023, 2024, 2025, 2026, 2028, 2029, 2030,
19 2031, 2033, 2035, 2036, 2037, 2038, 2039, 2050, 2051, 2052, 2053, 2054, 2055,
20 2056, 2057, 2058, 2059, 2060, 2061, 2062, 2063, 2066, 2067, 2068, 2069, 2070,
21 2081, 2090, 2091, 2144, 2146; 2-2, 2-3, 2-5, 4-1, 4-2, 4-3, 5-1, 5-2, 5-3, 6-1, 6-2,
22 6-3, 6-4, 7-1, 7-2, 7-3, 7-4, 8-1, 8-2, 8-3 and 8-4 of Grant Parish; Precincts 1, 2, 3,
23 5A, 6, 7, 8, 8A, 9, 10, 10A, 11, 11A, 13A, 15, 17, 17A, 18, 19AI, 22, 25, 25A and
24 25B of Jackson Parish; Precincts 3-4, 3-5, 3-6, 4-1, 4-2, 4-3, 4-4 and 5-2 of Lincoln
25 Parish; Precincts 23, 26-1, 27, 35, 40, 42 and 45 of Morehouse Parish; Natchitoches
26 Parish; Precincts 1, 1A, 6 and 7 of Ouachita Parish; Precincts C22, C23, C26, C27,
27 C30, C31, C32, C33, C34, C35, C36, C37-A, C37-B, C38-A, C38-B, C41, C42, N10,
28 N17, N18-A, N18-B, N19, N20, N21, N23, N27, N28, N29, S1, S2, S7, S8, S9, S10,
29 S11, S13, S14, S15, S16, S17, S18, S19, S20, S21, S22, S23, S24, S25, S26, S27,

1 S28 and S29 of Rapides Parish; Red River Parish; Sabine Parish; Union Parish;
2 Vernon Parish; Precincts 1, 2, 2B, 3, 4, 5, 6, 8, 9, 10, 11, 12, 13, 14, 15, 16, 17, 17A,
3 22, 28, 29, 31, 35, 36, 38, 39, 40, 41, 42 and 43 of Webster Parish and Winn Parish.

4 (5) District 5 is composed of Precincts 2-1, 2-2B, 2-3A, 2-4, 2-4A, 2-5, 2-5E,
5 2-7, 2-8, 3-1, 3-3, 6-1A, 6-2, 6-2A, 7-1, 7-3, 7-3B, 8-1, 8-2A, 8-2B, 8-3, 8-3A, 9-1A,
6 9-2, 9-2A, 9-3, 9-5B, 10-2, 10-3A, 10-4, 11-1 and 11-2A of Avoyelles Parish;
7 Precincts 1-1, 1-2, 2-1, 2-2, 2-4, 2-5, 2-6, 3-1, 3-2, 3-3 and 3-7 of Bienville Parish;
8 Caldwell Parish; Catahoula Parish; Precincts 8, 10, 11, 81, 84, 87 and 93 of
9 Claiborne Parish; Concordia Parish; Precincts 1-1, 1-2, 1-3, 1-4, 1-5, 1-6, 1-10, 1-11,
10 1-13, 1-14, 1-15, 1-16, 1-17, 1-18, 1-19, 1-20, 1-21, 1-22, 1-23, 1-24, 1-25, 1-26,
11 1-27, 1-28, 1-29, 1-30, 1-31, 1-32, 1-36, 1-37, 1-38, 1-45, 1-46, 1-50, 1-51, 1-54,
12 1-58, 1-61, 1-62, 1-63, 1-67, 1-68, 1-70, 1-71, 1-77, 1-78, 1-81, 1-82, 1-83, 1-84,
13 1-85, 1-86, 1-87, 1-88, 1-91, 1-92, 1-93, 1-94, 1-95, 1-97, 1-100, 1-101, 1-102,
14 1-104, 2-1, 2-2, 2-3, 2-4, 2-5, 2-9, 2-10, 2-11, 2-12, 2-13, 2-14, 2-15, 2-16, 2-17,
15 2-18, 2-19, 2-20, 2-21, 2-22, 2-23, 2-24, 2-25, 2-26, 2-27, 2-28, 2-29, 2-30, 2-31,
16 2-32, 2-34, 2-35, 2-36, 2-37, 3-8, 3-12, 3-24, 3-28, 3-32, 3-54 and 3-72 of East Baton
17 Rouge Parish; East Carroll Parish; Precincts 7, 9 (Part) Tract 951300 - Blocks 2024,
18 2025, 2026, 2027, 2028, 2029, 2030, 2031, 2032, 2033, 2034, 2035, 2036, 2037,
19 2038, 2039, 2040, 2041, 2042 and 2043; Tract 951600 - Blocks 1013, 1014, 1015,
20 1016, 1017, 1018, 1019, 1020, 1021, 1022, 1023, 1044, 1047, 1048, 1061, 4000,
21 4001, 4002, 4003, 4004, 4005, 4006, 4007, 4008, 4009, 4010, 4011, 4012, 4013,
22 4014, 4015, 4016, 4017, 4018, 4019, 4020, 4021, 4025; 10, 12, 13 and 14 of East
23 Feliciana Parish; Precincts 1010, 1031, 1080, 1081, 1090, 1100, 1101, 1110, 1120,
24 1150, 1160, 1162, 1170 and 1171 of Evangeline Parish; Franklin Parish; Precincts
25 2-1 (Part) Tract 020300 - Blocks 2043, 2046, 2047, 2064, 2065, 2077, 2078, 2079,
26 2080, 2084, 2085, 2086, 2087, 2088, 2089, 2092, 2093, 2094, 2095, 2096, 2102; 3-1,
27 3-2 and 3-3 of Grant Parish; Precincts 4, 5, 6A, 13, 16, 19A, 20 and 20A of Jackson
28 Parish; LaSalle Parish; Precincts 1-1, 1-2, 1-3, 2-1, 2-2, 3-1, 3-2, 3-3, 4-5, 4-6, 5-1,
29 5-3, 5-4, 6-1, 6-2, 6-3, 7-1, 7-2, 8-1, 8-2, 8-3, 8-4, 9-1, 9-2, 9-3, 9-4, 9-5, 10-1, 10-2,

1 10-3, 10-4, 10-5, 11-1, 11-2, 11-3, 11-4, 12-1, 12-2, 12-3, 12-4, 12-5 and 12-6 of
2 Lincoln Parish; Madison Parish; Precincts 1, 3-1, 6, 7, 8, 12, 13, 14, 16, 20, 21, 24,
3 29, 31, 32, 37, 39-1, 39-2, 47, 48, 50, 53 and 54 of Morehouse Parish; Precincts 2,
4 3, 4, 5, 8, 9, 9A, 10, 11, 12, 13, 14, 15, 16, 17, 18, 19, 20, 21, 22, 23, 24, 25, 26, 27,
5 27A, 28, 29, 30, 31, 32, 33, 34, 35, 36, 37, 38, 39, 40, 41, 42, 43, 44, 44A, 45, 46, 47,
6 48, 49, 50, 51, 51A, 52, 52A, 53, 54, 55, 56, 56A, 57, 58, 59, 60, 61, 62, 63, 64, 65,
7 65A, 66, 67, 68, 69, 70, 71, 72, 73, 74, 75, 76, 77, 78 and 79 of Ouachita Parish;
8 Pointe Coupee Parish; Precincts C1, C2, C3, C4, C5, C6, C7, C8, C9, C10, C11-A,
9 C11-B, C13, C14, C15, C17, C18, C19, C20, C21, C24, C25, C28, C39, C40, N1,
10 N2, N3, N4, N5, N6, N7, N8, N9, N11, N12, N13-A, N13-B, N14-A, N14-B, N15,
11 N16, N22, N24, N25, N26, S4, S5, S6A and S6B of Rapides Parish; Richland Parish;
12 St. Helena Parish; Precincts 1, 2, 3, 5, 6, 8, 9, 10, 11, 12, 13, 18, 19, 20, 21, 22, 23,
13 24, 25, 26, 44, 48, 49, 50 and 51 of St. Landry Parish; Precincts 1, 2, 6, 11, 15, 17,
14 18, 26, 27, 28, 101, 104, 105, 106 (Part) Tract 953501 - Blocks 3000; 107, 109,
15 111A, 115B and 119 of Tangipahoa Parish; Tensas Parish; Precincts 18, 24, 25, 25A,
16 26, 27, 32, 33 and 34 of Webster Parish; Precincts 9, 10B, 11A, 11B, 13A, 15, 17,
17 20 and 22 of West Baton Rouge Parish; West Carroll Parish and West Feliciana
18 Parish.

19 (6) District 6 is composed of Precincts 1, 2, 3, 4, 5, 6, 7, 8, 9, 10, 11, 12, 13,
20 14, 15, 16, 17, 18, 20, 21, 22, 23, 24, 25, 26, 27, 32, 33, 34, 35, 41, 43, 58, 61, 62, 63,
21 64, 71, 72, 73, 76, 77 and 78 of Ascension Parish; Precincts 2-1, 2-3, 2-4, 2-5, 3-1,
22 3-2, 4-1, 4-2, 5-1, 5-2, 5-3, 7-3, 8-1 and 9-1 of Assumption Parish; Precincts 1-7, 1-8,
23 1-9, 1-12, 1-33, 1-34, 1-35, 1-39, 1-40, 1-41, 1-42, 1-43, 1-44, 1-47, 1-48, 1-49, 1-52,
24 1-53, 1-55, 1-56, 1-57, 1-59, 1-60, 1-64, 1-65, 1-66, 1-69, 1-72, 1-73, 1-74, 1-75,
25 1-76, 1-79, 1-80, 1-89, 1-90, 1-98, 1-99, 1-103, 1-105, 1-107, 2-6, 2-7, 2-8, 2-33, 3-1,
26 3-2, 3-3, 3-4, 3-5, 3-6, 3-7, 3-9, 3-10, 3-11, 3-13, 3-14, 3-15, 3-16, 3-17, 3-18, 3-19,
27 3-20, 3-21, 3-22, 3-23, 3-25, 3-26, 3-27, 3-29, 3-30, 3-31, 3-33, 3-34, 3-35, 3-36,
28 3-37, 3-38, 3-39, 3-40, 3-41, 3-43, 3-44, 3-45, 3-46, 3-47, 3-48, 3-49, 3-50, 3-51,
29 3-52, 3-53, 3-55, 3-56, 3-58, 3-59, 3-60, 3-61, 3-62, 3-63, 3-64, 3-65, 3-66, 3-67,

1 3-68, 3-69, 3-70 and 3-71 of East Baton Rouge Parish; Precincts 1, 2, 3, 4, 5, 6, 8,
 2 9 (Part) Tract 951600 - Blocks 1045, 1046 and 1062; 11 of East Feliciana Parish;
 3 Precincts 9-1, 9-2, 9-4 and 9-5 of Iberia Parish; Precincts 5, 25, 27, 28, 29, 31 and
 4 32 of Iberville Parish; Precincts 1-1, 1-2, 1-3, 1-4, 1-5, 2-1, 2-1A, 2-2, 2-3, 2-3A,
 5 2-4, 2-5, 2-6, 2-7, 2-8, 2-9, 2-10, 2-11, 2-12, 2-13, 2-14, 3-1, 3-2, 3-3, 3-4, 3-5, 5-1,
 6 5-1A, 5-1B, 5-2, 6-1, 6-2, 6-3, 6-4, 6-5, 7-1, 7-2, 7-3, 7-4, 11-3, 11-4 and 11-5 of
 7 Lafourche Parish; Livingston Parish; Precincts 7, 7A, 14, 15, 16, 17, 27, 28, 29, 30,
 8 31, 32, 33, 34, 35, 36, 37, 38, 39, 40, 41, 42 and 43 of St. Landry Parish; Precincts
 9 1, 2, 5, 6, 7, 12, 13, 14, 15, 16, 17, 18, 19, 20, 21, 22, 23, 24, 25, 26, 27, 28 and 29
 10 of St. Martin Parish; Precincts 33, 40, 40A, 41, 42, 42A, 45, 45A, 46, 47, 48, 117,
 11 121, 121A, 125, 127, 127A, 133, 133A, 137, 137A, 137B, 137C and 137D of
 12 Tangipahoa Parish; Precincts 1, 4, 5, 7, 8, 9, 10, 11, 12, 13, 14, 16, 17, 18, 19, 20, 51,
 13 52, 53, 54, 56, 57, 58, 60, 61, 63, 64, 65, 67, 68, 71, 72, 73, 74, 76, 82, 86, 87 and 90
 14 of Terrebonne Parish; and Precincts 5, 6, 7A, 7B, 10A, 12, 13B, 14, 16, 18, 19, and
 15 21 of West Baton Rouge Parish.

16 Section 2. Section 4 and Subsection B of Section 5 of Act No. 5 of the 2022 First
 17 Extraordinary Session of the Legislature are hereby repealed in their entirety.

18 Section 3.(A) The precincts referenced in this Act are those precincts identified as
 19 Voting Districts (VTDs) in the 2020 Census Redistricting TIGER/Line Shapefiles for the
 20 State of Louisiana as validated through the data verification program of the Louisiana House
 21 of Representatives and the Louisiana Senate and available on the legislature's website on the
 22 effective date of this Section.

23 (B) When a precinct referenced in this Act has been subdivided by action of the
 24 parish governing authority on a nongeographic basis or subdivided by action of the parish
 25 governing authority on a geographic basis in accordance with the provisions of R.S.
 26 18:532.1, the enumeration in this Act of the general precinct designation shall include all
 27 nongeographic and all geographic subdivisions thereof, however such subdivisions may be
 28 designated.

1 (C) The territorial limits of the districts as provided in this Act shall continue in
2 effect until changed by law regardless of any subsequent change made to the precincts by
3 the parish governing authority.

4 Section 4. The provisions of this Act shall not reduce the term of office of any
5 person holding any position or office on the effective date of this Section for which the
6 appointment or election is based upon a congressional district as composed pursuant to R.S.
7 18:1276.1. Any position or office that is filled by appointment or election based on a
8 congressional district and that is to be filled after January 3, 2023, shall be appointed or
9 elected from a district as it is described in Section 1 of this Act.

10 Section 5.(A) Solely for the purposes of qualifying for election and the election of
11 representatives to the United States Congress at the regularly scheduled election for
12 representatives to the congress in 2022, the provisions of Section 1 of this Act shall become
13 effective upon signature of this Act by the governor or, if not signed by the governor, upon
14 expiration of the time for bills to become law without signature by the governor, as provided
15 in Article III, Section 18 of the Constitution of Louisiana. If this Act is vetoed by the
16 governor and subsequently approved by the legislature, the provisions of Section 1 of this
17 Act shall become effective on the day following such approval for the purposes established
18 in this Subsection.

19 (B) For subsequent elections of representatives to the United States Congress and
20 for all other purposes, the provisions of Section 1 of this Act shall become effective at noon
21 on January 3, 2023.

22 (C) The provisions of this Section and Sections 2, 3, and 4 of this Act shall become
23 effective upon signature of this Act by the governor or, if not signed by the governor, upon
24 expiration of the time for bills to become law without signature by the governor, as provided
25 in Article III, Section 18 of the Constitution of Louisiana. If this Act is vetoed by the
26 governor and subsequently approved by the legislature, the provisions of this Section and
27 Sections 2, 3, and 4 of this Act shall become effective on the day following such approval.

DIGEST

The digest printed below was prepared by House Legislative Services. It constitutes no part of the legislative instrument. The keyword, one-liner, abstract, and digest do not constitute part of the law or proof or indicia of legislative intent. [R.S. 1:13(B) and 24:177(E)]

HB 4 Original

2022 Second Extraordinary Session

Ivey

Abstract: Provides for the redistricting of the state's congressional districts and provides for the composition of each of the six congressional districts. Effective for election purposes only for the regular congressional elections in 2022 and for all other purposes at noon on Jan. 3, 2023.

Statistical summaries of proposed law, including district variances from the ideal population of 776,292 and the range of those variances, as well as maps illustrating proposed district boundaries accompany this digest. (*Attached to the bill version on the internet.*)

Present U.S. Constitution (14th Amendment) provides that representatives in congress shall be apportioned among the several states according to their respective numbers, counting the whole number of persons in each state. The U.S. Supreme Court has held that the population of congressional districts in the same state must be as nearly equal in population as practicable.

Proposed law redraws district boundaries for the six congressional districts, effective upon signature of the governor or lapse of time for gubernatorial action for purposes of the 2022 election.

Proposed law provides for its effectiveness in lieu of Act No. 5 of the 2022 1st E.S., which also redrew district boundaries for the six congressional districts based on 2020 Census Redistricting Data.

Proposed law retains present law districts based on 2010 Census Redistricting Data until noon on Jan. 3, 2023, at which time present law is repealed and proposed districts are effective for all other purposes.

Proposed law specifies that precincts referenced in district descriptions are those precincts identified as Voting Districts (VTDs) in the 2020 Census Redistricting TIGER/Line Shapefiles for the state of La. as validated through the data verification program of the La. legislature. Also specifies that if any such precinct has been subdivided by action of the parish governing authority on a nongeographic basis or subdivided by action of the parish governing authority on a geographic basis in accordance with present law, the enumeration of the general precinct designation shall include all nongeographic and all geographic subdivisions thereof. Further provides that the territorial limits of the districts as enacted shall continue in effect until changed by law regardless of any subsequent change made to the precincts by the parish governing authority.

Proposed law specifies that proposed law does not reduce the term of office of any person holding any position or office on the effective date of proposed law for which the appointment or election is based upon a congressional district as composed pursuant to present law. Specifies that any position or office filled after Jan. 3, 2023, for which the appointment or election is based on a congressional district shall be appointed or elected from a district as it is described in proposed law.

Population data in the summaries accompanying this digest are derived from 2020 Census Redistricting Data (Public Law 94-171), Summary File for Louisiana. Population data,

statistical information, and maps are supplied for purposes of information and analysis and comprise no part of proposed law.

Effective for election purposes only for the regular congressional elections in 2022; effective for all other purposes at noon on Jan. 3, 2023.

(Amends R.S. 18:1276; Repeals §§ 4 and 5(B) of Act No. 5 of the 2022 1st E.S.)

Plan Statistics

Plan: 22 2ES-7 (Ivey) Original

| <u>Districts:</u> | <u># of Members</u> | <u>Actual Population</u> | <u>Ideal Population</u> | <u>Absolute Deviation</u> | <u>Relative Deviation</u> |
|---------------------|---------------------|--------------------------|-------------------------|---------------------------|---------------------------|
| District 1 | 1 | 776,293 | 776,292 | 1 | 0.000% |
| District 2 | 1 | 776,289 | 776,292 | -3 | 0.000% |
| District 3 | 1 | 776,301 | 776,292 | 9 | 0.001% |
| District 4 | 1 | 776,293 | 776,292 | 1 | 0.000% |
| District 5 | 1 | 776,290 | 776,292 | -2 | 0.000% |
| District 6 | 1 | 776,291 | 776,292 | -1 | 0.000% |
| Grand Total: | 6 | 4,657,757 | 4,657,752 | | |

Ideal Population Per Member: 776292
 Number of Districts for Plan Type: 6
 Range of District Populations: 776,289 to 776,301
 Absolute Mean Deviation: 2
 Absolute Range: -3 to 9
 Absolute Overall Range: 12
 Relative Mean Deviation: 0.00%
 Relative Range: 0.00% to 0.00%
 Relative Overall Range: 0.00%

| | |
|--------------------------------------|-----------|
| <i>Ideal - Actual:</i> | -5 |
| <i>Remainder:</i> | 5 |
| <i>Unassigned Population:</i> | 0 |

Total Population

Plan: 22 2ES-7 (Ivey) Original

| | Total Population | Total White | Total Black | Total Asian | Total American Indian | Total Other | Total Hispanic | VAP Total | VAP White | VAP Black | VAP Asian | VAP American Indian | VAP Other | VAP Hispanic Total |
|-------------|------------------|-------------|-------------|-------------|-----------------------|-------------|----------------|-----------|-----------|-----------|-----------|---------------------|-----------|--------------------|
| District 1 | 776,293 | 539,828 | 123,567 | 22,369 | 19,712 | 70,817 | 86,651 | 599,410 | 431,994 | 86,396 | 16,325 | 14,176 | 50,519 | 60,353 |
| | 100.000% | 69.539% | 15.918% | 2.882% | 2.539% | 9.122% | 11.162% | 100.000% | 72.070% | 14.414% | 2.724% | 2.365% | 8.428% | 10.069% |
| District 2 | 776,289 | 273,860 | 407,909 | 26,390 | 9,412 | 58,718 | 77,284 | 603,559 | 230,555 | 302,993 | 21,015 | 7,228 | 41,768 | 54,527 |
| | 100.000% | 35.278% | 52.546% | 3.400% | 1.212% | 7.564% | 9.956% | 100.000% | 38.199% | 50.201% | 3.482% | 1.198% | 6.920% | 9.034% |
| District 3 | 776,301 | 510,470 | 201,220 | 16,493 | 11,808 | 36,310 | 42,938 | 586,694 | 399,840 | 141,160 | 11,876 | 8,606 | 25,212 | 29,103 |
| | 100.000% | 65.757% | 25.920% | 2.125% | 1.521% | 4.677% | 5.531% | 100.000% | 68.151% | 24.060% | 2.024% | 1.467% | 4.297% | 4.961% |
| District 4 | 776,293 | 473,177 | 241,297 | 12,777 | 19,697 | 29,345 | 37,111 | 593,717 | 375,369 | 173,613 | 9,285 | 14,849 | 20,601 | 25,523 |
| | 100.000% | 60.953% | 31.083% | 1.646% | 2.537% | 3.780% | 4.781% | 100.000% | 63.224% | 29.242% | 1.564% | 2.501% | 3.470% | 4.299% |
| District 5 | 776,290 | 323,688 | 408,402 | 10,407 | 9,164 | 24,629 | 29,139 | 592,869 | 262,015 | 297,479 | 8,129 | 7,009 | 18,237 | 21,087 |
| | 100.000% | 41.697% | 52.609% | 1.341% | 1.180% | 3.173% | 3.754% | 100.000% | 44.194% | 50.176% | 1.371% | 1.182% | 3.076% | 3.557% |
| District 6 | 776,291 | 536,629 | 160,724 | 18,852 | 17,267 | 42,819 | 49,426 | 594,299 | 424,738 | 114,128 | 13,786 | 12,372 | 29,275 | 33,069 |
| | 100.000% | 69.127% | 20.704% | 2.428% | 2.224% | 5.516% | 6.367% | 100.000% | 71.469% | 19.204% | 2.320% | 2.082% | 4.926% | 5.564% |
| Grand Total | 4,657,757 | 2,657,652 | 1,543,119 | 107,288 | 87,060 | 262,638 | 322,549 | 3,570,548 | 2,124,511 | 1,115,769 | 80,416 | 64,240 | 185,612 | 223,662 |
| | 100.000% | 57.059% | 33.130% | 2.303% | 1.869% | 5.639% | 6.925% | 100.000% | 59.501% | 31.249% | 2.252% | 1.799% | 5.198% | 6.264% |

Voter Registration

Plan: 22 2ES-7 (Ivey) Original

| | Reg Total Dec 2021 | Reg White Dec 2021 | Reg Black Dec 2021 | Reg Other Dec 2021 | Reg Dem Total Dec 2021 | Reg Rep Total Dec 2021 | Reg Other Total Dec 2021 |
|--------------------|-----------------------|-----------------------|-----------------------|-----------------------|------------------------------|------------------------------|--------------------------------|
| District 1 | 491,858 | 388,938 | 62,922 | 39,999 | 137,568 | 209,219 | 145,072 |
| | 82.057% | 79.075% | 12.793% | 8.132% | 27.969% | 42.536% | 29.495% |
| District 2 | 493,764 | 192,798 | 258,604 | 42,362 | 291,141 | 74,760 | 127,863 |
| | 81.809% | 39.047% | 52.374% | 8.579% | 58.964% | 15.141% | 25.896% |
| District 3 | 476,522 | 344,531 | 111,498 | 20,493 | 167,072 | 180,119 | 129,331 |
| | 81.222% | 72.301% | 23.398% | 4.301% | 35.061% | 37.799% | 27.141% |
| District 4 | 473,306 | 315,307 | 136,545 | 21,460 | 170,249 | 182,601 | 120,459 |
| | 79.719% | 66.618% | 28.849% | 4.534% | 35.970% | 38.580% | 25.451% |
| District 5 | 481,409 | 217,620 | 249,058 | 14,724 | 247,724 | 123,298 | 110,383 |
| | 81.200% | 45.205% | 51.735% | 3.059% | 51.458% | 25.612% | 22.929% |
| District 6 | 477,487 | 368,795 | 84,121 | 24,571 | 147,250 | 198,783 | 131,454 |
| | 80.345% | 77.237% | 17.617% | 5.146% | 30.839% | 41.631% | 27.530% |
| Grand Total | 2,894,346 | 1,827,989 | 902,748 | 163,609 | 1,161,004 | 968,780 | 764,562 |

Splits

Plan: 22 2ES-7 (Ivey) Original

| | Total Population | Total White | Total Black | Total Asian | Total American Indian | Total Other | VAP Total | VAP White | VAP Black | VAP Asian | VAP American Indian | VAP Other | Reg Total Dec 2021 | Reg White Dec 2021 | Reg Black Dec 2021 | Reg Other Dec 2021 |
|----------------------|------------------|-------------|-------------|-------------|-----------------------|-------------|-----------|-----------|-----------|-----------|---------------------|-----------|--------------------|--------------------|--------------------|--------------------|
| District 1 | | | | | | | | | | | | | | | | |
| *Jefferson | 235,351 | 153,202 | 29,358 | 11,317 | 4,291 | 37,183 | 187,931 | 127,854 | 21,260 | 8,504 | 3,232 | 27,081 | 145,764 | 114,920 | 12,112 | 18,732 |
| *Lafourche | 39,761 | 32,062 | 1,680 | 518 | 2,838 | 2,663 | 30,212 | 25,266 | 954 | 379 | 1,879 | 1,734 | 23,285 | 21,301 | 510 | 1,474 |
| *Orleans | 24,881 | 20,160 | 1,415 | 995 | 301 | 2,010 | 19,316 | 15,913 | 1,029 | 707 | 230 | 1,437 | 17,559 | 15,232 | 750 | 1,577 |
| Plaquemines | 23,515 | 14,287 | 5,428 | 1,317 | 697 | 1,786 | 17,334 | 10,856 | 3,857 | 925 | 500 | 1,196 | 13,908 | 9,513 | 3,134 | 1,261 |
| *St. Bernard | 23,870 | 14,147 | 6,313 | 700 | 490 | 2,220 | 17,399 | 10,793 | 4,198 | 489 | 364 | 1,555 | 15,135 | 10,680 | 3,493 | 962 |
| St. Tammany | 264,570 | 196,641 | 38,643 | 5,774 | 5,660 | 17,852 | 202,228 | 154,621 | 26,761 | 4,075 | 4,161 | 12,610 | 178,779 | 145,724 | 21,142 | 11,913 |
| *Tangipahoa | 73,754 | 51,594 | 16,633 | 761 | 1,628 | 3,138 | 55,845 | 40,592 | 11,301 | 537 | 1,199 | 2,216 | 43,602 | 34,073 | 7,923 | 1,607 |
| *Terrebonne | 45,128 | 27,792 | 10,663 | 771 | 3,071 | 2,831 | 34,194 | 22,356 | 7,304 | 555 | 2,050 | 1,929 | 26,239 | 18,660 | 5,756 | 1,823 |
| Washington | 45,463 | 29,943 | 13,434 | 216 | 736 | 1,134 | 34,951 | 23,743 | 9,732 | 154 | 561 | 761 | 27,587 | 18,835 | 8,102 | 650 |
| District 1 | 776,293 | 539,828 | 123,567 | 22,369 | 19,712 | 70,817 | 599,410 | 431,994 | 86,396 | 16,325 | 14,176 | 50,519 | 491,858 | 388,938 | 62,922 | 39,999 |
| | 100.000% | 69.539% | 15.918% | 2.882% | 2.539% | 9.122% | 100.000% | 72.070% | 14.414% | 2.724% | 2.365% | 8.428% | 82.057% | 79.075% | 12.793% | 8.132% |
| District 2 | | | | | | | | | | | | | | | | |
| *Ascension | 29,110 | 10,091 | 16,883 | 251 | 272 | 1,613 | 21,583 | 8,208 | 11,895 | 190 | 187 | 1,103 | 18,667 | 7,325 | 10,534 | 808 |
| *Assumption | 7,047 | 3,165 | 3,643 | 23 | 47 | 169 | 5,551 | 2,587 | 2,774 | 15 | 34 | 141 | 5,060 | 2,290 | 2,702 | 68 |
| *East Baton Rouge | 3,966 | 1,057 | 1,685 | 208 | 46 | 970 | 2,793 | 923 | 1,097 | 163 | 21 | 589 | 1,400 | 522 | 752 | 126 |
| *Iberville | 24,881 | 11,316 | 12,045 | 188 | 205 | 1,127 | 19,725 | 9,566 | 8,886 | 140 | 168 | 965 | 16,256 | 7,460 | 8,430 | 366 |
| *Jefferson | 205,430 | 67,733 | 96,859 | 11,707 | 3,395 | 25,736 | 156,723 | 56,281 | 70,915 | 9,188 | 2,603 | 17,736 | 117,337 | 44,696 | 57,464 | 15,177 |
| *Orleans | 359,116 | 106,302 | 217,554 | 11,861 | 3,365 | 20,034 | 286,880 | 94,339 | 165,039 | 9,813 | 2,718 | 14,971 | 238,685 | 76,754 | 140,775 | 21,156 |
| *St. Bernard | 19,894 | 10,350 | 5,996 | 681 | 457 | 2,410 | 14,376 | 8,199 | 3,746 | 493 | 324 | 1,614 | 10,518 | 7,553 | 2,004 | 961 |
| St. Charles | 52,549 | 33,550 | 13,928 | 837 | 925 | 3,309 | 39,541 | 26,154 | 9,890 | 529 | 667 | 2,301 | 34,985 | 24,309 | 8,797 | 1,879 |
| St. James | 20,192 | 9,973 | 9,762 | 60 | 82 | 315 | 15,505 | 7,883 | 7,297 | 31 | 64 | 230 | 14,966 | 7,254 | 7,501 | 211 |
| St. John the Baptist | 42,477 | 13,877 | 25,196 | 403 | 465 | 2,536 | 32,503 | 11,622 | 18,437 | 323 | 350 | 1,771 | 28,913 | 10,219 | 17,234 | 1,460 |
| *West Baton Rouge | 11,627 | 6,446 | 4,358 | 171 | 153 | 499 | 8,379 | 4,793 | 3,017 | 130 | 92 | 347 | 6,977 | 4,416 | 2,411 | 150 |
| District 2 | 776,289 | 273,860 | 407,909 | 26,390 | 9,412 | 58,718 | 603,559 | 230,555 | 302,993 | 21,015 | 7,228 | 41,768 | 493,764 | 192,798 | 258,604 | 42,362 |
| | 100.000% | 35.278% | 52.546% | 3.400% | 1.212% | 7.564% | 100.000% | 38.199% | 50.201% | 3.482% | 1.198% | 6.920% | 81.809% | 39.047% | 52.374% | 8.579% |
| District 3 | | | | | | | | | | | | | | | | |
| Acadia | 57,576 | 44,480 | 10,864 | 238 | 573 | 1,421 | 42,943 | 34,071 | 7,383 | 173 | 400 | 916 | 37,678 | 30,555 | 6,407 | 716 |
| *Allen | 9,040 | 6,647 | 1,296 | 117 | 502 | 478 | 6,913 | 5,157 | 895 | 86 | 320 | 455 | 5,024 | 3,985 | 740 | 299 |
| *Avoyelles | 731 | 572 | 111 | 3 | 36 | 9 | 570 | 469 | 60 | 1 | 35 | 5 | 501 | 466 | 26 | 9 |
| Calcasieu | 216,785 | 139,772 | 59,386 | 4,702 | 3,536 | 9,389 | 163,166 | 108,789 | 41,898 | 3,359 | 2,604 | 6,516 | 120,511 | 85,659 | 29,513 | 5,339 |
| Cameron | 5,617 | 5,232 | 125 | 30 | 75 | 155 | 4,358 | 4,100 | 79 | 23 | 47 | 109 | 4,789 | 4,610 | 88 | 91 |
| *Evangeline | 24,162 | 18,575 | 4,018 | 177 | 240 | 1,152 | 18,347 | 14,171 | 2,854 | 132 | 187 | 1,003 | 15,200 | 12,634 | 2,299 | 267 |
| *Iberia | 63,503 | 34,133 | 23,487 | 2,092 | 737 | 3,054 | 47,928 | 27,430 | 16,264 | 1,546 | 537 | 2,151 | 39,752 | 24,510 | 13,457 | 1,785 |
| Jefferson Davis | 32,250 | 25,066 | 5,837 | 183 | 472 | 692 | 24,039 | 19,121 | 4,006 | 111 | 325 | 476 | 20,013 | 16,350 | 3,202 | 461 |
| Lafayette | 241,753 | 153,363 | 65,136 | 6,454 | 3,210 | 13,590 | 183,875 | 121,608 | 45,917 | 4,664 | 2,387 | 9,299 | 153,493 | 108,645 | 36,481 | 8,367 |

Splits

Plan: 22 2ES-7 (Ivey) Original

| | Total Population | Total White | Total Black | Total Asian | Total American Indian | Total Other | VAP Total | VAP White | VAP Black | VAP Asian | VAP American Indian | VAP Other | Reg Total Dec 2021 | Reg White Dec 2021 | Reg Black Dec 2021 | Reg Other Dec 2021 |
|--------------|------------------|-------------|-------------|-------------|-----------------------|-------------|-----------|-----------|-----------|-----------|---------------------|-----------|--------------------|--------------------|--------------------|--------------------|
| District 3 | | | | | | | | | | | | | | | | |
| *St. Landry | 7,310 | 5,890 | 1,156 | 56 | 54 | 154 | 5,548 | 4,644 | 704 | 42 | 40 | 118 | 5,058 | 4,177 | 754 | 127 |
| *St. Martin | 10,809 | 5,314 | 5,003 | 159 | 80 | 253 | 8,474 | 4,323 | 3,793 | 109 | 63 | 186 | 7,524 | 3,723 | 3,646 | 155 |
| St. Mary | 49,406 | 26,949 | 15,991 | 835 | 1,670 | 3,961 | 37,521 | 21,594 | 11,520 | 593 | 1,173 | 2,641 | 30,210 | 18,712 | 9,891 | 1,607 |
| Vermilion | 57,359 | 44,477 | 8,810 | 1,447 | 623 | 2,002 | 43,012 | 34,363 | 5,787 | 1,037 | 488 | 1,337 | 36,769 | 30,505 | 4,994 | 1,270 |
| District 3 | 776,301 | 510,470 | 201,220 | 16,493 | 11,808 | 36,310 | 586,694 | 399,840 | 141,160 | 11,876 | 8,606 | 25,212 | 476,522 | 344,531 | 111,498 | 20,493 |
| | 100.000% | 65.757% | 25.920% | 2.125% | 1.521% | 4.677% | 100.000% | 68.151% | 24.060% | 2.024% | 1.467% | 4.297% | 81.222% | 72.301% | 23.398% | 4.301% |
| District 4 | | | | | | | | | | | | | | | | |
| *Allen | 13,710 | 9,680 | 3,194 | 129 | 445 | 262 | 10,597 | 7,594 | 2,380 | 96 | 326 | 201 | 7,177 | 5,493 | 1,477 | 207 |
| *Avoyelles | 12,841 | 11,035 | 1,339 | 64 | 194 | 209 | 9,764 | 8,574 | 836 | 49 | 140 | 165 | 7,824 | 7,064 | 589 | 171 |
| Beauregard | 36,549 | 29,529 | 4,649 | 402 | 1,052 | 917 | 27,489 | 22,304 | 3,495 | 269 | 773 | 648 | 22,294 | 18,771 | 2,369 | 1,154 |
| *Bienville | 8,318 | 5,609 | 2,397 | 47 | 171 | 94 | 6,336 | 4,309 | 1,806 | 25 | 131 | 65 | 5,523 | 3,818 | 1,649 | 56 |
| Bossier | 128,746 | 81,052 | 32,551 | 3,492 | 3,273 | 8,378 | 95,876 | 62,931 | 22,440 | 2,448 | 2,477 | 5,580 | 69,743 | 50,861 | 14,838 | 4,044 |
| Caddo | 237,848 | 103,457 | 119,304 | 4,034 | 3,840 | 7,213 | 182,407 | 85,059 | 86,359 | 3,008 | 2,958 | 5,023 | 151,296 | 73,113 | 71,249 | 6,934 |
| *Claiborne | 10,602 | 6,278 | 3,881 | 56 | 143 | 244 | 8,813 | 5,472 | 2,996 | 30 | 111 | 204 | 6,218 | 3,970 | 2,149 | 99 |
| De Soto | 26,812 | 15,284 | 9,973 | 117 | 740 | 698 | 20,440 | 11,909 | 7,425 | 86 | 557 | 463 | 18,713 | 11,330 | 6,810 | 573 |
| *Grant | 20,029 | 16,908 | 2,031 | 129 | 629 | 332 | 15,886 | 13,318 | 1,752 | 93 | 494 | 229 | 11,264 | 10,726 | 237 | 307 |
| *Jackson | 12,011 | 9,013 | 2,199 | 158 | 210 | 431 | 9,428 | 7,222 | 1,579 | 130 | 145 | 352 | 7,150 | 5,884 | 1,114 | 152 |
| *Lincoln | 5,966 | 4,864 | 754 | 37 | 121 | 190 | 4,600 | 3,780 | 566 | 30 | 98 | 126 | 4,049 | 3,468 | 500 | 81 |
| *Morehouse | 6,889 | 5,782 | 794 | 50 | 168 | 95 | 5,466 | 4,620 | 614 | 32 | 119 | 81 | 4,876 | 4,270 | 514 | 92 |
| Natchitoches | 37,515 | 19,361 | 15,725 | 255 | 861 | 1,313 | 29,349 | 16,010 | 11,415 | 198 | 683 | 1,043 | 23,107 | 12,850 | 9,224 | 1,033 |
| *Ouachita | 11,095 | 8,499 | 1,909 | 238 | 224 | 225 | 8,304 | 6,513 | 1,286 | 167 | 172 | 166 | 6,962 | 5,720 | 1,001 | 241 |
| *Rapides | 66,174 | 49,533 | 10,480 | 1,554 | 1,941 | 2,666 | 50,676 | 38,985 | 7,291 | 1,138 | 1,474 | 1,788 | 42,041 | 34,482 | 5,473 | 2,086 |
| Red River | 7,620 | 4,195 | 3,106 | 25 | 171 | 123 | 5,714 | 3,338 | 2,164 | 3 | 116 | 93 | 5,631 | 3,130 | 2,418 | 83 |
| Sabine | 22,155 | 15,036 | 3,861 | 94 | 2,723 | 441 | 17,064 | 12,054 | 2,655 | 66 | 1,970 | 319 | 14,547 | 11,023 | 2,184 | 1,340 |
| Union | 21,107 | 14,460 | 5,224 | 62 | 338 | 1,023 | 16,632 | 11,807 | 3,861 | 39 | 254 | 671 | 15,221 | 11,066 | 3,692 | 463 |
| Vernon | 48,750 | 35,087 | 7,611 | 1,442 | 1,600 | 3,010 | 36,261 | 26,765 | 5,133 | 1,074 | 1,160 | 2,129 | 24,060 | 19,182 | 3,011 | 1,867 |
| *Webster | 27,801 | 19,921 | 6,588 | 182 | 590 | 520 | 21,709 | 15,873 | 4,865 | 134 | 484 | 353 | 17,204 | 13,098 | 3,755 | 351 |
| Winn | 13,755 | 8,594 | 3,727 | 210 | 263 | 961 | 10,906 | 6,932 | 2,695 | 170 | 207 | 902 | 8,406 | 5,988 | 2,292 | 126 |
| District 4 | 776,293 | 473,177 | 241,297 | 12,777 | 19,697 | 29,345 | 593,717 | 375,369 | 173,613 | 9,285 | 14,849 | 20,601 | 473,306 | 315,307 | 136,545 | 21,460 |
| | 100.000% | 60.953% | 31.083% | 1.646% | 2.537% | 3.780% | 100.000% | 63.224% | 29.242% | 1.564% | 2.501% | 3.470% | 79.719% | 66.618% | 28.849% | 4.534% |
| District 5 | | | | | | | | | | | | | | | | |
| *Avoyelles | 26,121 | 14,018 | 10,228 | 367 | 537 | 971 | 20,244 | 11,226 | 7,415 | 329 | 395 | 879 | 15,101 | 9,004 | 5,679 | 418 |
| *Bienville | 4,663 | 1,341 | 3,203 | 10 | 36 | 73 | 3,737 | 1,177 | 2,478 | 5 | 31 | 46 | 3,324 | 1,025 | 2,268 | 31 |
| Caldwell | 9,645 | 7,646 | 1,632 | 51 | 150 | 166 | 7,478 | 5,969 | 1,224 | 46 | 116 | 123 | 6,031 | 5,124 | 818 | 89 |
| Catahoula | 8,906 | 5,776 | 2,395 | 46 | 119 | 570 | 6,951 | 4,557 | 1,736 | 33 | 87 | 538 | 6,467 | 4,639 | 1,770 | 58 |

Splits

Plan: 22 2ES-7 (Ivey) Original

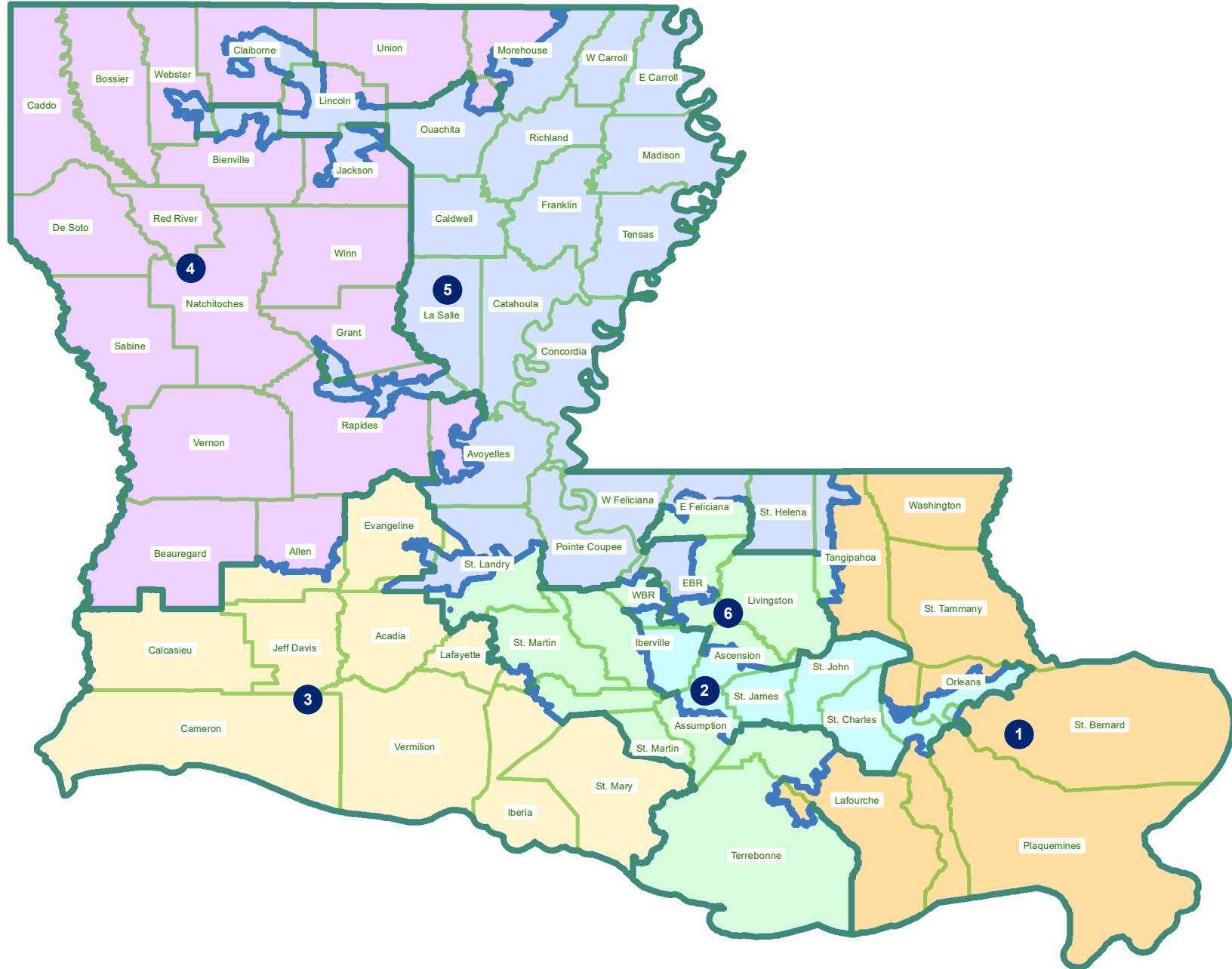
| | Total Population | Total White | Total Black | Total Asian | Total American Indian | Total Other | VAP Total | VAP White | VAP Black | VAP Asian | VAP American Indian | VAP Other | Reg Total Dec 2021 | Reg White Dec 2021 | Reg Black Dec 2021 | Reg Other Dec 2021 |
|-------------------|------------------|-------------|-------------|-------------|-----------------------|-------------|-----------|-----------|-----------|-----------|---------------------|-----------|--------------------|--------------------|--------------------|--------------------|
| District 5 | | | | | | | | | | | | | | | | |
| *Claiborne | 3,568 | 985 | 2,479 | 32 | 42 | 30 | 2,694 | 786 | 1,828 | 25 | 29 | 26 | 2,380 | 662 | 1,671 | 47 |
| Concordia | 18,687 | 10,275 | 7,725 | 122 | 233 | 332 | 14,217 | 8,108 | 5,613 | 100 | 167 | 229 | 11,964 | 7,222 | 4,540 | 202 |
| *East Baton Rouge | 204,421 | 36,519 | 153,451 | 4,133 | 1,323 | 8,995 | 154,695 | 31,331 | 112,776 | 3,229 | 1,052 | 6,307 | 121,748 | 23,164 | 93,308 | 5,276 |
| East Carroll | 7,459 | 2,054 | 5,272 | 29 | 43 | 61 | 5,901 | 1,773 | 4,043 | 19 | 27 | 39 | 4,709 | 1,306 | 3,359 | 44 |
| *East Feliciana | 5,359 | 2,231 | 2,992 | 24 | 55 | 57 | 4,414 | 1,895 | 2,420 | 16 | 40 | 43 | 4,595 | 1,895 | 2,507 | 193 |
| *Evangeline | 8,188 | 2,779 | 5,217 | 64 | 40 | 88 | 6,061 | 2,289 | 3,629 | 55 | 30 | 58 | 5,353 | 1,932 | 3,344 | 77 |
| Franklin | 19,774 | 12,492 | 6,802 | 70 | 205 | 205 | 15,028 | 9,901 | 4,779 | 44 | 153 | 151 | 13,159 | 9,015 | 4,034 | 110 |
| *Grant | 2,140 | 801 | 1,304 | 4 | 15 | 16 | 1,641 | 646 | 965 | 4 | 13 | 13 | 1,424 | 448 | 939 | 31 |
| *Jackson | 3,020 | 954 | 1,967 | 17 | 45 | 37 | 2,355 | 745 | 1,546 | 10 | 29 | 25 | 2,299 | 763 | 1,496 | 40 |
| La Salle | 14,791 | 11,348 | 1,422 | 283 | 372 | 1,366 | 11,563 | 8,636 | 1,065 | 264 | 271 | 1,327 | 8,792 | 7,978 | 637 | 177 |
| *Lincoln | 42,430 | 21,170 | 18,610 | 855 | 541 | 1,254 | 34,055 | 17,526 | 14,553 | 714 | 428 | 834 | 21,600 | 12,204 | 8,516 | 880 |
| Madison | 10,017 | 3,475 | 6,363 | 20 | 59 | 100 | 7,435 | 2,906 | 4,391 | 9 | 48 | 81 | 7,278 | 2,494 | 4,674 | 110 |
| *Morehouse | 18,740 | 6,499 | 11,690 | 110 | 202 | 239 | 14,596 | 5,475 | 8,686 | 85 | 160 | 190 | 12,046 | 4,235 | 7,617 | 194 |
| *Ouachita | 149,273 | 80,046 | 59,308 | 2,550 | 2,437 | 4,932 | 111,896 | 63,461 | 41,004 | 1,951 | 1,887 | 3,593 | 92,790 | 54,795 | 34,657 | 3,338 |
| Pointe Coupee | 20,758 | 12,395 | 7,504 | 107 | 159 | 593 | 16,250 | 10,108 | 5,502 | 91 | 119 | 430 | 14,675 | 9,320 | 5,121 | 234 |
| *Rapides | 63,849 | 27,977 | 32,112 | 874 | 1,161 | 1,725 | 48,116 | 22,388 | 22,914 | 648 | 860 | 1,306 | 38,135 | 18,350 | 18,302 | 1,483 |
| Richland | 20,043 | 11,785 | 7,603 | 83 | 258 | 314 | 15,383 | 9,338 | 5,546 | 66 | 203 | 230 | 13,662 | 8,470 | 4,961 | 231 |
| St. Helena | 10,920 | 4,527 | 6,031 | 39 | 134 | 189 | 8,463 | 3,805 | 4,371 | 28 | 109 | 150 | 8,321 | 3,628 | 4,565 | 128 |
| *St. Landry | 40,424 | 13,807 | 25,391 | 217 | 247 | 762 | 30,158 | 10,986 | 18,312 | 152 | 182 | 526 | 26,737 | 9,263 | 16,852 | 622 |
| *Tangipahoa | 17,665 | 6,585 | 10,264 | 91 | 157 | 568 | 13,325 | 5,374 | 7,406 | 73 | 111 | 361 | 10,745 | 4,358 | 6,117 | 269 |
| Tensas | 4,147 | 1,744 | 2,312 | 23 | 26 | 42 | 3,235 | 1,446 | 1,728 | 12 | 23 | 26 | 3,455 | 1,503 | 1,917 | 35 |
| *Webster | 9,166 | 2,814 | 6,091 | 26 | 97 | 138 | 7,044 | 2,271 | 4,599 | 20 | 74 | 80 | 5,533 | 1,840 | 3,584 | 109 |
| *West Baton Rouge | 7,055 | 2,868 | 3,869 | 44 | 66 | 208 | 5,619 | 2,386 | 2,989 | 25 | 55 | 164 | 4,641 | 1,978 | 2,585 | 78 |
| West Carroll | 9,751 | 7,894 | 1,425 | 27 | 180 | 225 | 7,532 | 6,223 | 1,010 | 20 | 136 | 143 | 7,038 | 5,913 | 1,040 | 85 |
| West Feliciana | 15,310 | 10,883 | 3,740 | 89 | 225 | 373 | 12,783 | 9,283 | 2,951 | 56 | 174 | 319 | 7,407 | 5,092 | 2,180 | 135 |
| District 5 | 776,290 | 323,688 | 408,402 | 10,407 | 9,164 | 24,629 | 592,869 | 262,015 | 297,479 | 8,129 | 7,009 | 18,237 | 481,409 | 217,620 | 249,058 | 14,724 |
| | 100.000% | 41.697% | 52.609% | 1.341% | 1.180% | 3.173% | 100.000% | 44.194% | 50.176% | 1.371% | 1.182% | 3.076% | 81.200% | 45.205% | 51.735% | 3.059% |
| District 6 | | | | | | | | | | | | | | | | |
| *Ascension | 97,390 | 71,050 | 15,333 | 2,049 | 1,732 | 7,226 | 70,374 | 52,928 | 10,244 | 1,324 | 1,203 | 4,675 | 61,250 | 49,475 | 8,280 | 3,495 |
| *Assumption | 13,992 | 10,557 | 2,577 | 73 | 211 | 574 | 11,065 | 8,558 | 1,933 | 42 | 163 | 369 | 9,379 | 7,410 | 1,808 | 161 |
| *East Baton Rouge | 248,394 | 158,493 | 58,262 | 12,084 | 3,358 | 16,197 | 198,124 | 131,627 | 42,917 | 9,207 | 2,674 | 11,699 | 156,116 | 114,546 | 30,615 | 10,955 |
| *East Feliciana | 14,180 | 9,285 | 4,349 | 67 | 207 | 272 | 11,769 | 7,845 | 3,498 | 45 | 158 | 223 | 9,005 | 6,064 | 2,679 | 262 |
| *Iberia | 6,426 | 5,073 | 1,069 | 31 | 57 | 196 | 4,863 | 3,865 | 805 | 16 | 44 | 133 | 4,774 | 3,777 | 895 | 102 |
| *Iberville | 5,360 | 3,517 | 1,685 | 14 | 69 | 75 | 4,361 | 2,896 | 1,346 | 9 | 53 | 57 | 4,206 | 2,672 | 1,467 | 67 |
| *Lafourche | 57,796 | 39,648 | 14,175 | 507 | 1,386 | 2,080 | 44,407 | 31,572 | 10,123 | 359 | 898 | 1,455 | 34,993 | 27,166 | 6,654 | 1,173 |

Splits

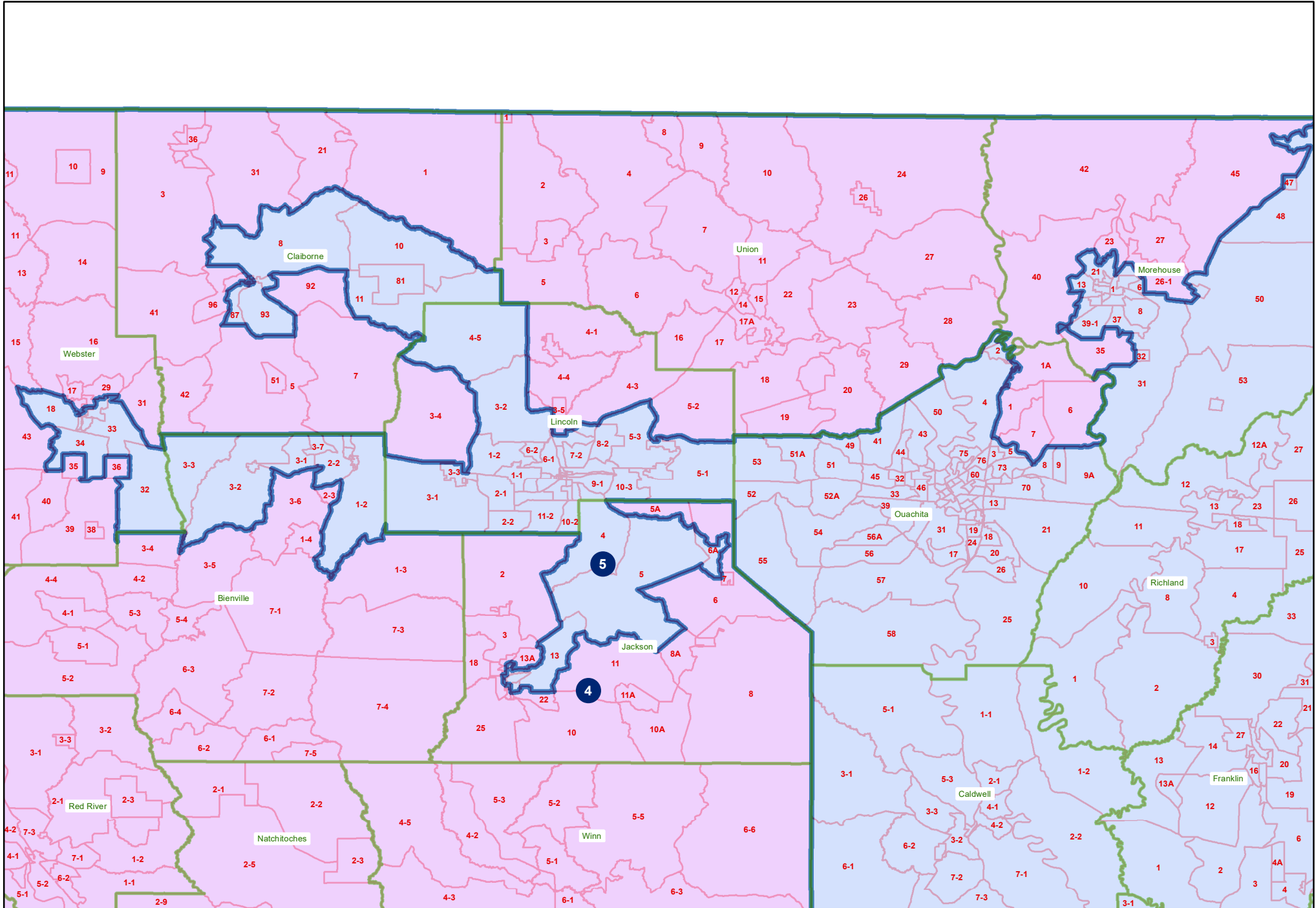
Plan: 22 2ES-7 (Ivey) Original

| | Total Population | Total White | Total Black | Total Asian | Total American Indian | Total Other | VAP Total | VAP White | VAP Black | VAP Asian | VAP American Indian | VAP Other | Reg Total Dec 2021 | Reg White Dec 2021 | Reg Black Dec 2021 | Reg Other Dec 2021 |
|-------------------|---------------------|----------------|----------------|----------------|-----------------------------|----------------|-----------|-----------|-----------|-----------|---------------------------|-----------|-----------------------|-----------------------|-----------------------|-----------------------|
| District 6 | | | | | | | | | | | | | | | | |
| Livingston | 142,282 | 116,855 | 12,658 | 1,697 | 3,111 | 7,961 | 105,141 | 88,432 | 8,136 | 1,099 | 2,311 | 5,163 | 84,568 | 76,062 | 5,425 | 3,081 |
| *St. Landry | 34,806 | 23,914 | 9,289 | 226 | 335 | 1,042 | 26,105 | 18,579 | 6,481 | 159 | 229 | 657 | 22,687 | 16,653 | 5,399 | 635 |
| *St. Martin | 40,958 | 27,945 | 10,918 | 438 | 459 | 1,198 | 30,930 | 21,955 | 7,500 | 298 | 350 | 827 | 27,596 | 20,211 | 6,735 | 650 |
| *Tangipahoa | 41,738 | 23,157 | 14,982 | 622 | 669 | 2,308 | 32,321 | 19,239 | 10,510 | 490 | 517 | 1,565 | 21,909 | 14,481 | 6,485 | 943 |
| *Terrebonne | 64,452 | 42,142 | 12,484 | 972 | 5,566 | 3,288 | 48,311 | 33,275 | 8,492 | 684 | 3,700 | 2,160 | 35,481 | 26,735 | 5,810 | 2,936 |
| *West Baton Rouge | 8,517 | 4,993 | 2,943 | 72 | 107 | 402 | 6,528 | 3,967 | 2,143 | 54 | 72 | 292 | 5,523 | 3,543 | 1,869 | 111 |
| District 6 | 776,291 | 536,629 | 160,724 | 18,852 | 17,267 | 42,819 | 594,299 | 424,738 | 114,128 | 13,786 | 12,372 | 29,275 | 477,487 | 368,795 | 84,121 | 24,571 |
| | 100.000% | 69.127% | 20.704% | 2.428% | 2.224% | 5.516% | 100.000% | 71.469% | 19.204% | 2.320% | 2.082% | 4.926% | 80.345% | 77.237% | 17.617% | 5.146% |

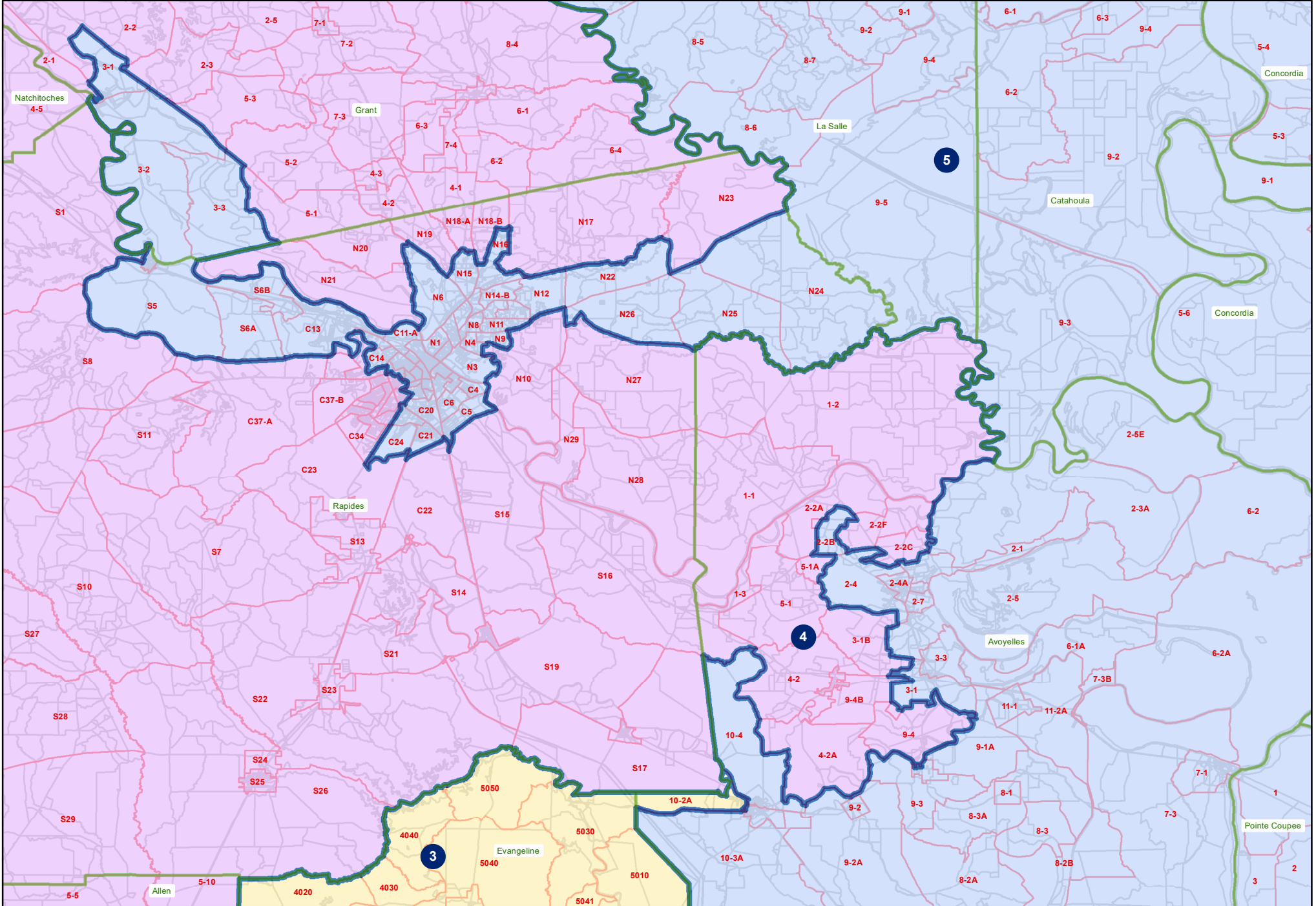
22 2ES-7 (Ivey) Original
Statewide



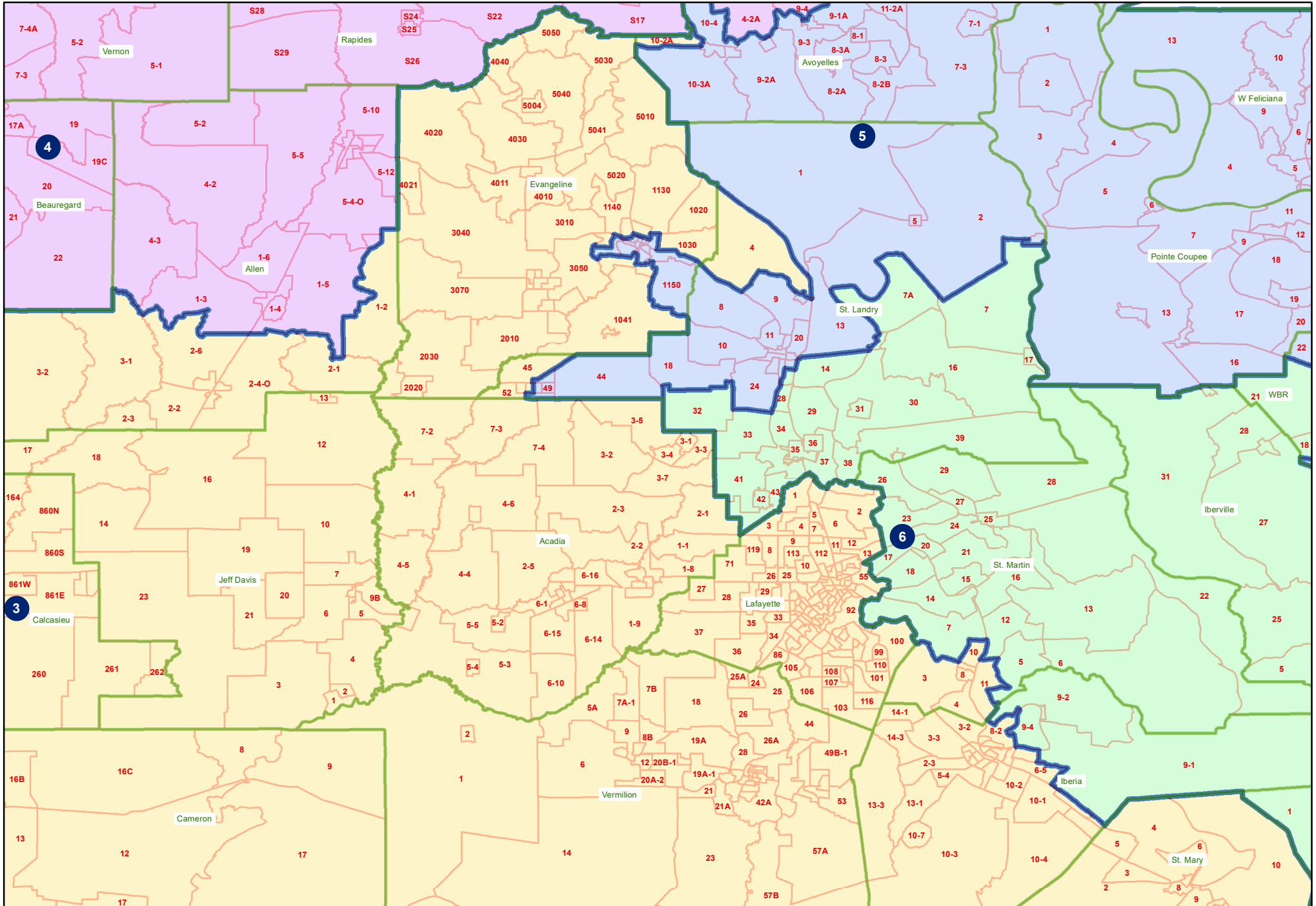
22 2ES-7 (Ivey) Original North Louisiana



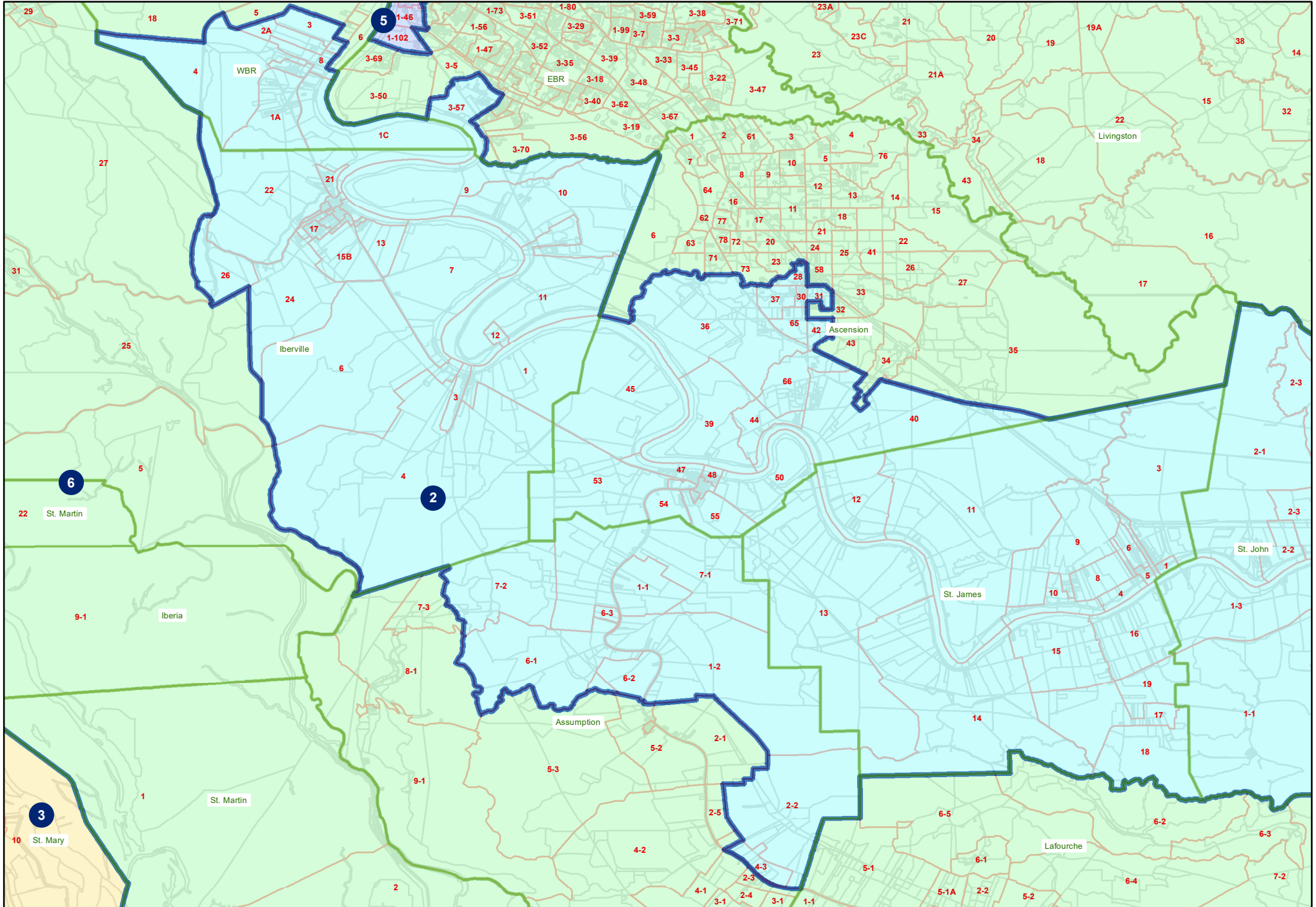
22 2ES-7 (Ivey) Original
Central Louisiana



22 2ES-7 (Ivey) Original Acadiana

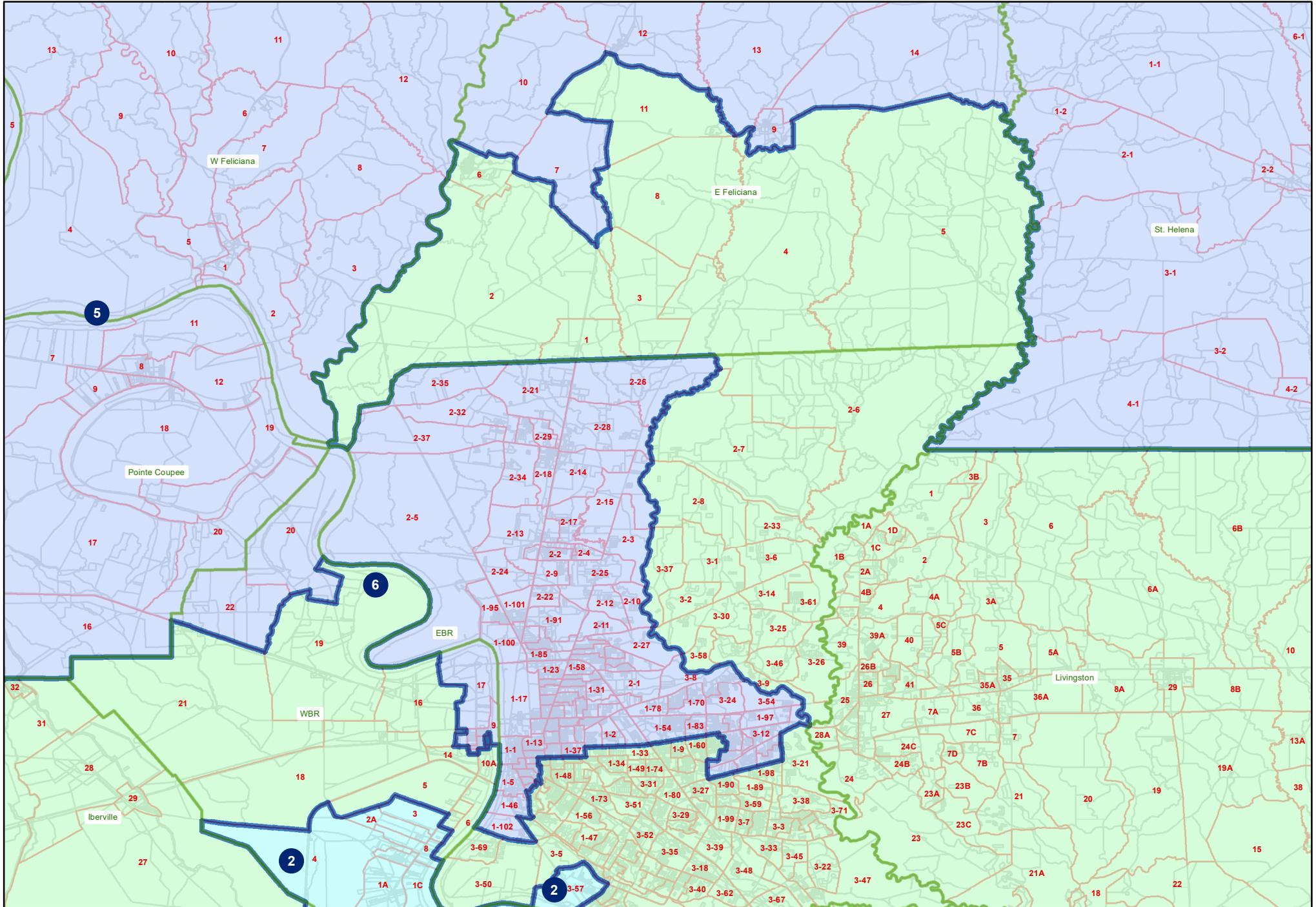


22 2ES-7 (Ivey) Original River Parishes

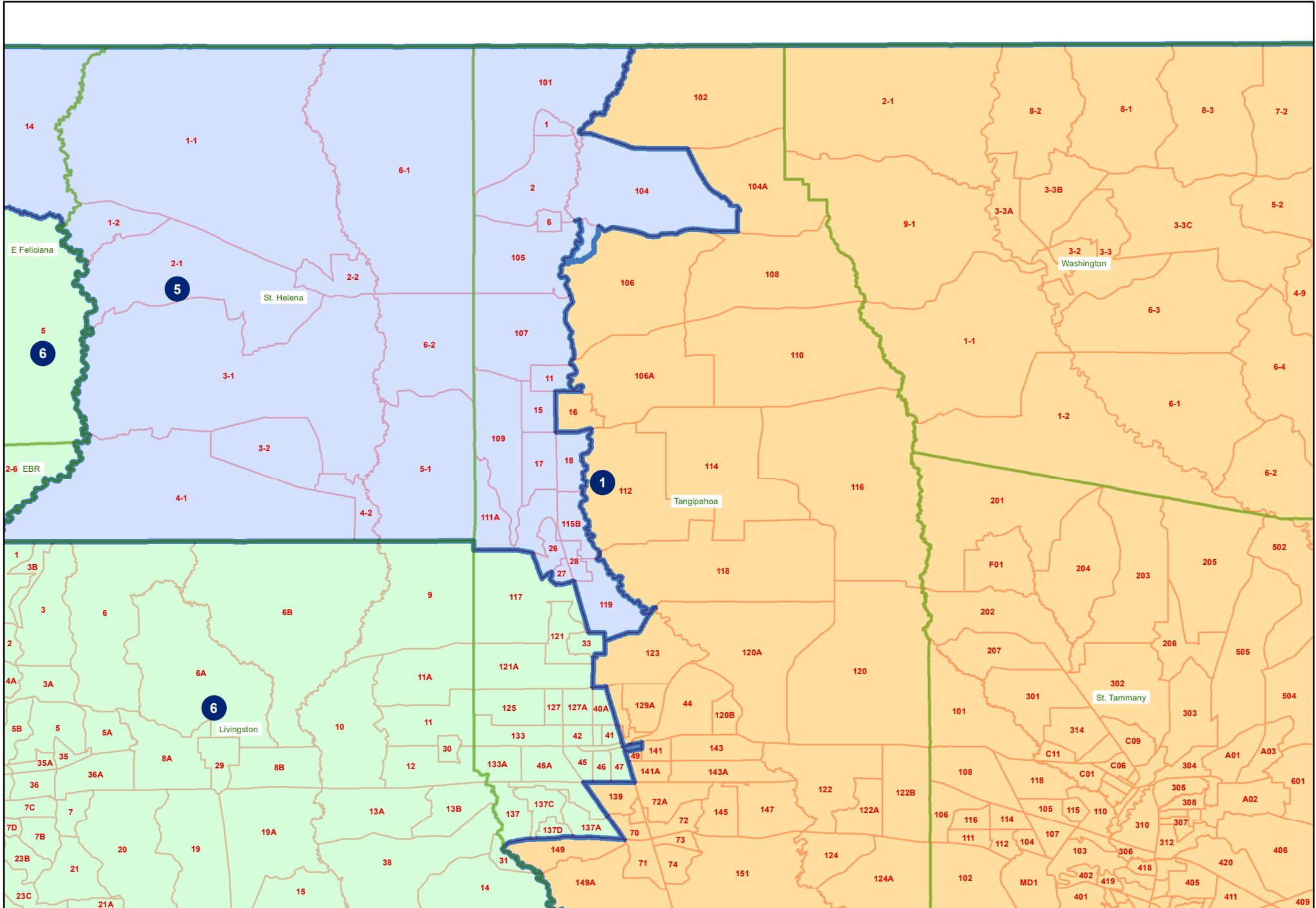


22 2ES-7 (Ivey) Original

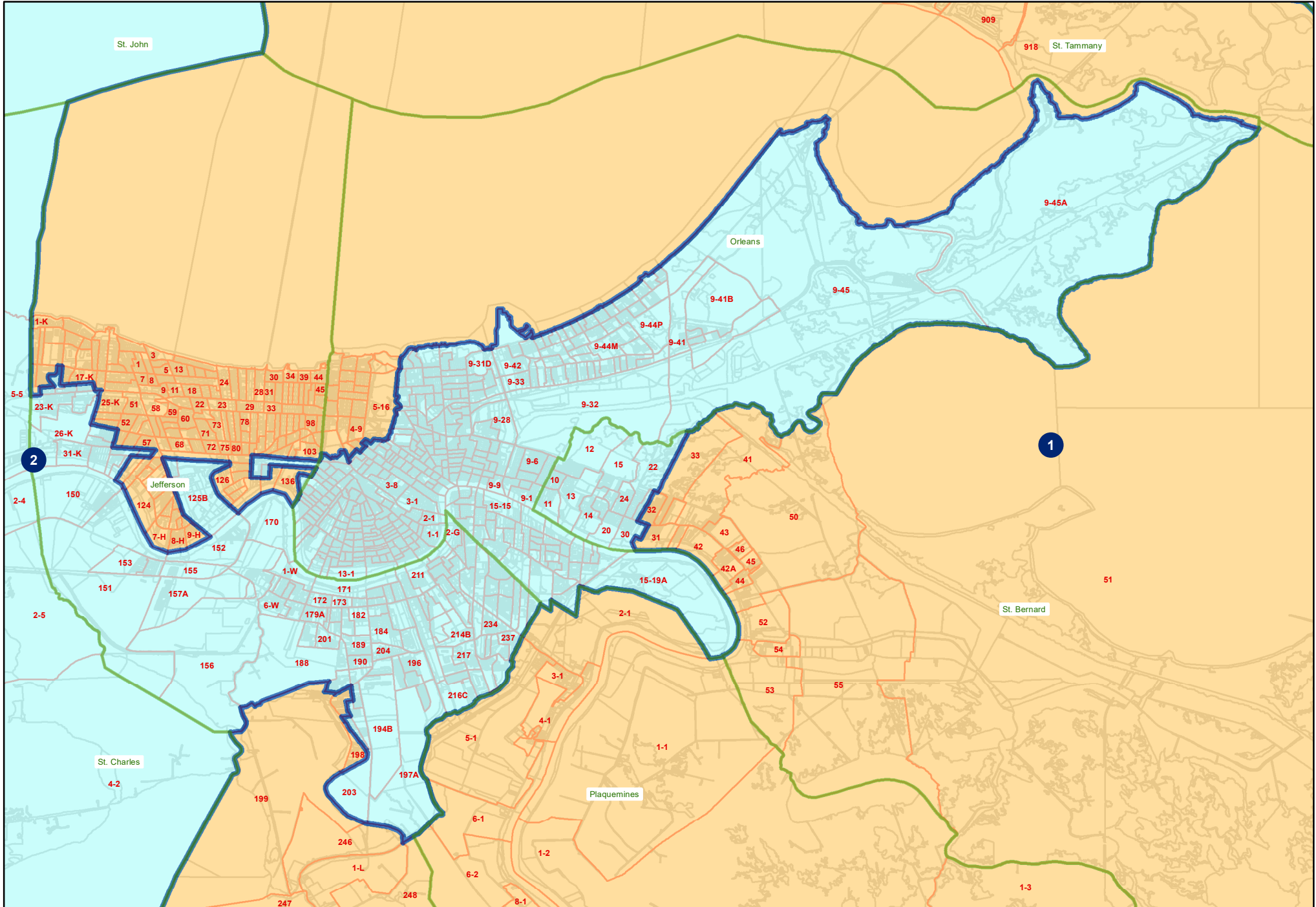
East Baton Rouge and East Feliciana Parishes



22 2ES-7 (Ivey) Original Tangipahoa Parish



22 2ES-7 (Ivey) Original New Orleans Area



22 2ES-7 (Ivey) Original

Lafourche and Terrebonne Parishes

