

---

**HOUSE COMMITTEE AMENDMENTS**

2022 Second Extraordinary Session

 Amendments proposed by House Committee on House and Governmental Affairs to  
 Original House Bill No. 4 by Representative Ivey
 

---

 1 AMENDMENT NO. 1

 2 On page 5, delete lines 21 through 29 and delete pages 6 through 10 and on page 11, delete  
 3 lines 1 through 15 and insert the following:

 4 "(1) District 1 is composed of Precincts 1, 2, 3, 4, 5, 7, 8, 9, 10, 11, 12, 13,  
 5 14, 15, 16, 17, 18, 19, 20, 21, 22, 23, 24, 25, 26, 27, 28, 29, 30, 31, 32, 33, 34, 35, 36,  
 6 37, 38, 39, 40, 41, 42, 43, 44, 45, 46, 51, 52, 53, 54, 58, 59, 60, 61, 62, 63, 64, 65, 66,  
 7 68, 69, 70, 71, 72, 73, 74, 75, 76, 77, 78, 79, 80, 81, 82, 83, 84, 85, 86, 87, 88, 89, 90,  
 8 91, 92, 93, 94, 95, 96, 97, 98, 99, 100, 101, 102, 103, 1-K, 2-K, 3-K, 4-K, 5-K,  
 9 6-KA, 6-KB, 7-KA, 7-KB, 8-K, 9-K, 10-K, 11-K, 12-K, 13-KA, 13-KB, 14-K, 15-K,  
 10 16-K, 17-K, 18-K, 19-K, 20-K, 21-K, 22-K, 25-K, 27-K, 28-K, 34-K, and 35-K of  
 11 Jefferson Parish; Livingston Parish; St. Tammany Parish; Tangipahoa Parish; and  
 12 Washington Parish.

 13 (2) District 2 is composed of Precincts 55, 56, 57, 67, 104, 105, 106, 108,  
 14 115, 116, 117, 118, 119, 120, 121, 122, 123, 124, 125A, 125B, 126, 127, 128, 129,  
 15 130, 131, 132, 133, 134, 136, 138, 150, 151, 152, 153, 154, 155, 156, 157A, 157B,  
 16 170, 171, 172, 173, 174, 175, 176, 177, 178, 179A, 179B, 180, 181, 182, 183, 184,  
 17 185A, 185B, 187, 188, 189, 190, 191, 192, 193A, 193B, 194A, 194B, 195, 196,  
 18 197A, 197B, 198, 199, 200, 201, 202, 203, 204, 205, 210, 211, 212, 213A, 213B,  
 19 213C, 214A, 214B, 215, 216A, 216B, 216C, 217, 225, 226, 227, 228, 229, 230, 231,  
 20 232A, 232B, 234, 235, 236, 237, 238A, 238B, 246, 247, 248, 1-G, 2-G, 3-G, 4-G,  
 21 5-G, 6-G, 7-G, 8-G, 9-G, 10-G, 11-G, 12-G, 13-G, 1-GI, 1-H, 2-H, 3-H, 4-H, 5-H,  
 22 6-H, 7-H, 8-H, 9-H, 23-K, 24-K, 26-K, 29-K, 30-K, 31-K, 33-K, 1-L, 1-W, 2-W,  
 23 3-W, 4-W, 5-W, 6-W, and 7-W of Jefferson Parish; Precincts 4-6, 10-1, 10-2, 10-3,  
 24 10-4, 10-5, 10-6, 10-7, 10-8, 10-9, 10-10, 10-11, 10-12, 10-13, 10-14, 10-15, 10-16,  
 25 and 11-1 of Lafourche Parish; Orleans Parish; Plaquemines Parish; St. Bernard  
 26 Parish; and St. Charles Parish.

 27 (3) District 3 is composed of Acadia Parish; Precincts 2-1, 2-2, 2-3, 2-4, 2-5,  
 28 3-1, 3-2, 4-1, 4-2, 4-3, 5-1, 5-2, 5-3, 7-3, 8-1, and 9-1 of Assumption Parish;  
 29 Beauregard Parish; Calcasieu Parish; Cameron Parish; Iberia Parish; Precincts 1, 2,  
 30 3, 4, 5, 6, 7, 8, 8A, 9A, 9B, 10, 12, 13, 14, 16, 18, 19, 20, 21, and 23 of Jefferson  
 31 Davis Parish; Precincts 1-1, 1-2, 1-3, 1-4, 1-5, 2-1, 2-1A, 2-2, 2-3, 2-3A, 2-4, 2-5,  
 32 2-6, 2-7, 2-8, 2-9, 2-10, 2-11, 2-12, 2-13, 2-14, 3-1, 3-2, 3-3, 3-4, 3-5, 3-6, 4-1, 4-2,  
 33 4-3, 4-4, 4-5, 5-1, 5-1A, 5-1B, 5-2, 6-1, 6-2, 6-3, 6-4, 6-5, 7-1, 7-2, 7-3, 7-4, 8-1, 9-1,  
 34 9-2, 11-2, 11-3, 11-4, and 11-5 of Lafourche Parish; St. Martin Parish; St. Mary  
 35 Parish; Terrebonne Parish; and Vermilion Parish.

 36 (4) District 4 is composed of Bienville Parish; Bossier Parish; Caddo Parish;  
 37 Claiborne Parish; De Soto Parish; East Carroll Parish; Precincts 32 and 33 of  
 38 Franklin Parish; Jackson Parish; Lincoln Parish; Madison Parish; Morehouse Parish;  
 39 Ouachita Parish; Richland Parish; Union Parish; Webster Parish; and West Carroll  
 40 Parish.

 41 (5) District 5 is composed of Allen Parish; Avoyelles Parish; Caldwell  
 42 Parish; Catahoula Parish; Concordia Parish; Evangeline Parish; Precincts 1, 2, 3, 4,  
 43 4A, 4B, 6, 12, 13, 13A, 14, 16, 18, 19, 20, 21, 22, 24, 26, 27, 30, and 31 of Franklin  
 44 Parish; Grant Parish; Precincts 17 of Jefferson Davis Parish; Lafayette Parish; La  
 45 Salle Parish; Natchitoches Parish; Rapides Parish; Red River Parish; Sabine Parish;  
 46 St. Landry Parish; Tensas Parish; Vernon Parish; and Winn Parish.

 47 (6) District 6 is composed of Ascension Parish; Precincts 1-1, 1-2, 5-5, 6-1,  
 48 6-2, 6-3, 7-1, and 7-2 of Assumption Parish; East Baton Rouge Parish; East Feliciana  
 49 Parish; Iberville Parish; Pointe Coupee Parish; St. Helena Parish; St. James Parish;  
 50 St. John the Baptist Parish; West Baton Rouge Parish; and West Feliciana Parish."

# Plan Statistics

Plan: HCAHB4 474 13

<u>Districts:</u>	<u># of Members</u>	<u>Actual Population</u>	<u>Ideal Population</u>	<u>Absolute Deviation</u>	<u>Relative Deviation</u>
District 1	1	776,276	776,292	-16	-0.002%
District 2	1	776,278	776,292	-14	-0.002%
District 3	1	776,300	776,292	8	0.001%
District 4	1	776,319	776,292	27	0.003%
District 5	1	776,308	776,292	16	0.002%
District 6	1	776,276	776,292	-16	-0.002%
<b>Grand Total:</b>	<b>6</b>	<b>4,657,757</b>	<b>4,657,752</b>		

Ideal Population Per Member: 776292  
 Number of Districts for Plan Type: 6  
 Range of District Populations: 776,276 to 776,319  
 Absolute Mean Deviation: 7  
 Absolute Range: -16 to 27  
 Absolute Overall Range: 43  
 Relative Mean Deviation: 0.00%  
 Relative Range: 0.00% to 0.00%  
 Relative Overall Range: 0.00%

<b><i>Ideal - Actual:</i></b>	<b>-5</b>
<b><i>Remainder:</i></b>	<b>5</b>
<b><i>Unassigned Population:</i></b>	<b>0</b>

# Total Population

Plan: HCAHB4 474 13

	Total Population	Total White	Total Black	Total Asian	Total American Indian	Total Other	Total Hispanic	VAP Total	VAP White	VAP Black	VAP Asian	VAP American Indian	VAP Other	VAP Hispanic Total
District 1	776,276	541,461	132,751	19,212	15,221	67,631	81,473	595,189	429,401	92,708	14,003	11,317	47,760	56,239
	100.000%	69.751%	17.101%	2.475%	1.961%	8.712%	10.495%	100.000%	72.145%	15.576%	2.353%	1.901%	8.024%	9.449%
District 2	776,278	320,658	351,474	29,744	12,656	61,746	81,338	605,263	266,915	261,534	23,359	9,518	43,937	57,311
	100.000%	41.307%	45.277%	3.832%	1.630%	7.954%	10.478%	100.000%	44.099%	43.210%	3.859%	1.573%	7.259%	9.469%
District 3	776,300	522,660	187,235	13,020	20,412	32,973	39,321	586,104	409,149	131,055	9,268	14,157	22,475	25,892
	100.000%	67.327%	24.119%	1.677%	2.629%	4.247%	5.065%	100.000%	69.808%	22.360%	1.581%	2.415%	3.835%	4.418%
District 4	776,319	413,998	309,787	12,235	13,776	26,523	31,216	593,431	331,782	223,640	9,056	10,575	18,378	20,941
	100.000%	53.328%	39.905%	1.576%	1.775%	3.417%	4.021%	100.000%	55.909%	37.686%	1.526%	1.782%	3.097%	3.529%
District 5	776,308	486,549	228,424	13,053	16,300	31,982	39,909	591,683	383,936	162,459	9,655	12,057	23,576	28,959
	100.000%	62.675%	29.424%	1.681%	2.100%	4.120%	5.141%	100.000%	64.889%	27.457%	1.632%	2.038%	3.985%	4.894%
District 6	776,276	372,326	333,448	20,024	8,695	41,783	49,292	598,878	303,328	244,373	15,075	6,616	29,486	34,320
	100.000%	47.963%	42.955%	2.579%	1.120%	5.382%	6.350%	100.000%	50.649%	40.805%	2.517%	1.105%	4.924%	5.731%
Grand Total	4,657,757	2,657,652	1,543,119	107,288	87,060	262,638	322,549	3,570,548	2,124,511	1,115,769	80,416	64,240	185,612	223,662
	100.000%	57.059%	33.130%	2.303%	1.869%	5.639%	6.925%	100.000%	59.501%	31.249%	2.252%	1.799%	5.198%	6.264%

# Voter Registration

Plan: HCAHB4 474 13

	Reg Total Dec 2021	Reg White Dec 2021	Reg Black Dec 2021	Reg Other Dec 2021	Reg Dem Total Dec 2021	Reg Rep Total Dec 2021	Reg Other Total Dec 2021
District 1	481,101	379,866	66,228	35,007	128,991	211,682	140,428
	80.832%	78.958%	13.766%	7.276%	26.812%	43.999%	29.189%
District 2	492,986	229,095	217,744	46,147	266,445	90,887	135,654
	81.450%	46.471%	44.168%	9.361%	54.047%	18.436%	27.517%
District 3	468,500	346,948	101,644	19,908	164,060	176,602	127,838
	79.935%	74.055%	21.696%	4.249%	35.018%	37.695%	27.287%
District 4	480,379	280,904	181,269	18,206	191,721	170,735	117,923
	80.949%	58.475%	37.735%	3.790%	39.910%	35.542%	24.548%
District 5	482,100	330,584	131,289	20,227	179,709	179,684	122,707
	81.479%	68.572%	27.233%	4.196%	37.276%	37.271%	25.453%
District 6	489,280	260,592	204,574	24,114	230,078	139,190	120,012
	81.699%	53.260%	41.811%	4.928%	47.024%	28.448%	24.528%
Grand Total	2,894,346	1,827,989	902,748	163,609	1,161,004	968,780	764,562

# Splits

Plan: HCAHB4 474 13

	Total Population	Total White	Total Black	Total Asian	Total American Indian	Total Other	VAP Total	VAP White	VAP Black	VAP Asian	VAP American Indian	VAP Other	Reg Total Dec 2021	Reg White Dec 2021	Reg Black Dec 2021	Reg Other Dec 2021
District 1																
*Jefferson	190,804	116,686	26,137	10,051	3,260	34,670	151,378	97,400	18,862	7,575	2,457	25,084	113,911	86,333	11,034	16,544
Livingston	142,282	116,855	12,658	1,697	3,111	7,961	105,141	88,432	8,136	1,099	2,311	5,163	84,568	76,062	5,425	3,081
St. Tammany	264,570	196,641	38,643	5,774	5,660	17,852	202,228	154,621	26,761	4,075	4,161	12,610	178,779	145,724	21,142	11,913
Tangipahoa	133,157	81,336	41,879	1,474	2,454	6,014	101,491	65,205	29,217	1,100	1,827	4,142	76,256	52,912	20,525	2,819
Washington	45,463	29,943	13,434	216	736	1,134	34,951	23,743	9,732	154	561	761	27,587	18,835	8,102	650
District 1	776,276	541,461	132,751	19,212	15,221	67,631	595,189	429,401	92,708	14,003	11,317	47,760	481,101	379,866	66,228	35,007
	100.000%	69.751%	17.101%	2.475%	1.961%	8.712%	100.000%	72.145%	15.576%	2.353%	1.901%	8.024%	80.832%	78.958%	13.766%	7.276%
District 2																
*Jefferson	249,977	104,249	100,080	12,973	4,426	28,249	193,276	86,735	73,313	10,117	3,378	19,733	149,190	73,283	58,542	17,365
*Lafourche	22,476	17,613	760	380	1,995	1,728	17,141	13,926	462	286	1,337	1,130	13,006	11,771	249	986
Orleans	383,997	126,462	218,969	12,856	3,666	22,044	306,196	110,252	166,068	10,520	2,948	16,408	256,244	91,986	141,525	22,733
Plaquemines	23,515	14,287	5,428	1,317	697	1,786	17,334	10,856	3,857	925	500	1,196	13,908	9,513	3,134	1,261
St. Bernard	43,764	24,497	12,309	1,381	947	4,630	31,775	18,992	7,944	982	688	3,169	25,653	18,233	5,497	1,923
St. Charles	52,549	33,550	13,928	837	925	3,309	39,541	26,154	9,890	529	667	2,301	34,985	24,309	8,797	1,879
District 2	776,278	320,658	351,474	29,744	12,656	61,746	605,263	266,915	261,534	23,359	9,518	43,937	492,986	229,095	217,744	46,147
	100.000%	41.307%	45.277%	3.832%	1.630%	7.954%	100.000%	44.099%	43.210%	3.859%	1.573%	7.259%	81.450%	46.471%	44.168%	9.361%
District 3																
Acadia	57,576	44,480	10,864	238	573	1,421	42,943	34,071	7,383	173	400	916	37,678	30,555	6,407	716
*Assumption	14,680	10,917	2,860	75	221	607	11,606	8,883	2,120	43	172	388	9,825	7,681	1,974	170
Beauregard	36,549	29,529	4,649	402	1,052	917	27,489	22,304	3,495	269	773	648	22,294	18,771	2,369	1,154
Calcasieu	216,785	139,772	59,386	4,702	3,536	9,389	163,166	108,789	41,898	3,359	2,604	6,516	120,511	85,659	29,513	5,339
Cameron	5,617	5,232	125	30	75	155	4,358	4,100	79	23	47	109	4,789	4,610	88	91
Iberia	69,929	39,206	24,556	2,123	794	3,250	52,791	31,295	17,069	1,562	581	2,284	44,526	28,287	14,352	1,887
*Jefferson Davis	31,971	24,808	5,831	183	463	686	23,831	18,929	4,000	111	316	475	19,786	16,143	3,194	449
*Lafourche	75,081	54,097	15,095	645	2,229	3,015	57,478	42,912	10,615	452	1,440	2,059	45,272	36,696	6,915	1,661
St. Martin	51,767	33,259	15,921	597	539	1,451	39,404	26,278	11,293	407	413	1,013	35,120	23,934	10,381	805
St. Mary	49,406	26,949	15,991	835	1,670	3,961	37,521	21,594	11,520	593	1,173	2,641	30,210	18,712	9,891	1,607
Terrebonne	109,580	69,934	23,147	1,743	8,637	6,119	82,505	55,631	15,796	1,239	5,750	4,089	61,720	45,395	11,566	4,759
Vermilion	57,359	44,477	8,810	1,447	623	2,002	43,012	34,363	5,787	1,037	488	1,337	36,769	30,505	4,994	1,270
District 3	776,300	522,660	187,235	13,020	20,412	32,973	586,104	409,149	131,055	9,268	14,157	22,475	468,500	346,948	101,644	19,908
	100.000%	67.327%	24.119%	1.677%	2.629%	4.247%	100.000%	69.808%	22.360%	1.581%	2.415%	3.835%	79.935%	74.055%	21.696%	4.249%
District 4																
Bienville	12,981	6,950	5,600	57	207	167	10,073	5,486	4,284	30	162	111	8,847	4,843	3,917	87
Bossier	128,746	81,052	32,551	3,492	3,273	8,378	95,876	62,931	22,440	2,448	2,477	5,580	69,743	50,861	14,838	4,044
Caddo	237,848	103,457	119,304	4,034	3,840	7,213	182,407	85,059	86,359	3,008	2,958	5,023	151,296	73,113	71,249	6,934

# Splits

Plan: HCAHB4 474 13

	Total Population	Total White	Total Black	Total Asian	Total American Indian	Total Other	VAP Total	VAP White	VAP Black	VAP Asian	VAP American Indian	VAP Other	Reg Total Dec 2021	Reg White Dec 2021	Reg Black Dec 2021	Reg Other Dec 2021
District 4																
Claiborne	14,170	7,263	6,360	88	185	274	11,507	6,258	4,824	55	140	230	8,598	4,632	3,820	146
De Soto	26,812	15,284	9,973	117	740	698	20,440	11,909	7,425	86	557	463	18,713	11,330	6,810	573
East Carroll	7,459	2,054	5,272	29	43	61	5,901	1,773	4,043	19	27	39	4,709	1,306	3,359	44
*Franklin	994	762	202	3	18	9	792	606	159	3	17	7	765	599	155	11
Jackson	15,031	9,967	4,166	175	255	468	11,783	7,967	3,125	140	174	377	9,449	6,647	2,610	192
Lincoln	48,396	26,034	19,364	892	662	1,444	38,655	21,306	15,119	744	526	960	25,649	15,672	9,016	961
Madison	10,017	3,475	6,363	20	59	100	7,435	2,906	4,391	9	48	81	7,278	2,494	4,674	110
Morehouse	25,629	12,281	12,484	160	370	334	20,062	10,095	9,300	117	279	271	16,922	8,505	8,131	286
Ouachita	160,368	88,545	61,217	2,788	2,661	5,157	120,200	69,974	42,290	2,118	2,059	3,759	99,752	60,515	35,658	3,579
Richland	20,043	11,785	7,603	83	258	314	15,383	9,338	5,546	66	203	230	13,662	8,470	4,961	231
Union	21,107	14,460	5,224	62	338	1,023	16,632	11,807	3,861	39	254	671	15,221	11,066	3,692	463
Webster	36,967	22,735	12,679	208	687	658	28,753	18,144	9,464	154	558	433	22,737	14,938	7,339	460
West Carroll	9,751	7,894	1,425	27	180	225	7,532	6,223	1,010	20	136	143	7,038	5,913	1,040	85
District 4	776,319	413,998	309,787	12,235	13,776	26,523	593,431	331,782	223,640	9,056	10,575	18,378	480,379	280,904	181,269	18,206
	100.000%	53.328%	39.905%	1.576%	1.775%	3.417%	100.000%	55.909%	37.686%	1.526%	1.782%	3.097%	80.949%	58.475%	37.735%	3.790%
District 5																
Allen	22,750	16,327	4,490	246	947	740	17,510	12,751	3,275	182	646	656	12,201	9,478	2,217	506
Avoyelles	39,693	25,625	11,678	434	767	1,189	30,578	20,269	8,311	379	570	1,049	23,426	16,534	6,294	598
Caldwell	9,645	7,646	1,632	51	150	166	7,478	5,969	1,224	46	116	123	6,031	5,124	818	89
Catahoula	8,906	5,776	2,395	46	119	570	6,951	4,557	1,736	33	87	538	6,467	4,639	1,770	58
Concordia	18,687	10,275	7,725	122	233	332	14,217	8,108	5,613	100	167	229	11,964	7,222	4,540	202
Evangeline	32,350	21,354	9,235	241	280	1,240	24,408	16,460	6,483	187	217	1,061	20,553	14,566	5,643	344
*Franklin	18,780	11,730	6,600	67	187	196	14,236	9,295	4,620	41	136	144	12,394	8,416	3,879	99
Grant	22,169	17,709	3,335	133	644	348	17,527	13,964	2,717	97	507	242	12,688	11,174	1,176	338
*Jefferson Davis	279	258	6	0	9	6	208	192	6	0	9	1	227	207	8	12
La Salle	14,791	11,348	1,422	283	372	1,366	11,563	8,636	1,065	264	271	1,327	8,792	7,978	637	177
Lafayette	241,753	153,363	65,136	6,454	3,210	13,590	183,875	121,608	45,917	4,664	2,387	9,299	153,493	108,645	36,481	8,367
Natchitoches	37,515	19,361	15,725	255	861	1,313	29,349	16,010	11,415	198	683	1,043	23,107	12,850	9,224	1,033
Rapides	130,023	77,510	42,592	2,428	3,102	4,391	98,792	61,373	30,205	1,786	2,334	3,094	80,176	52,832	23,775	3,569
Red River	7,620	4,195	3,106	25	171	123	5,714	3,338	2,164	3	116	93	5,631	3,130	2,418	83
Sabine	22,155	15,036	3,861	94	2,723	441	17,064	12,054	2,655	66	1,970	319	14,547	11,023	2,184	1,340
St. Landry	82,540	43,611	35,836	499	636	1,958	61,811	34,209	25,497	353	451	1,301	54,482	30,093	23,005	1,384
Tensas	4,147	1,744	2,312	23	26	42	3,235	1,446	1,728	12	23	26	3,455	1,503	1,917	35
Vernon	48,750	35,087	7,611	1,442	1,600	3,010	36,261	26,765	5,133	1,074	1,160	2,129	24,060	19,182	3,011	1,867
Winn	13,755	8,594	3,727	210	263	961	10,906	6,932	2,695	170	207	902	8,406	5,988	2,292	126

# Splits

Plan: HCAHB4 474 13

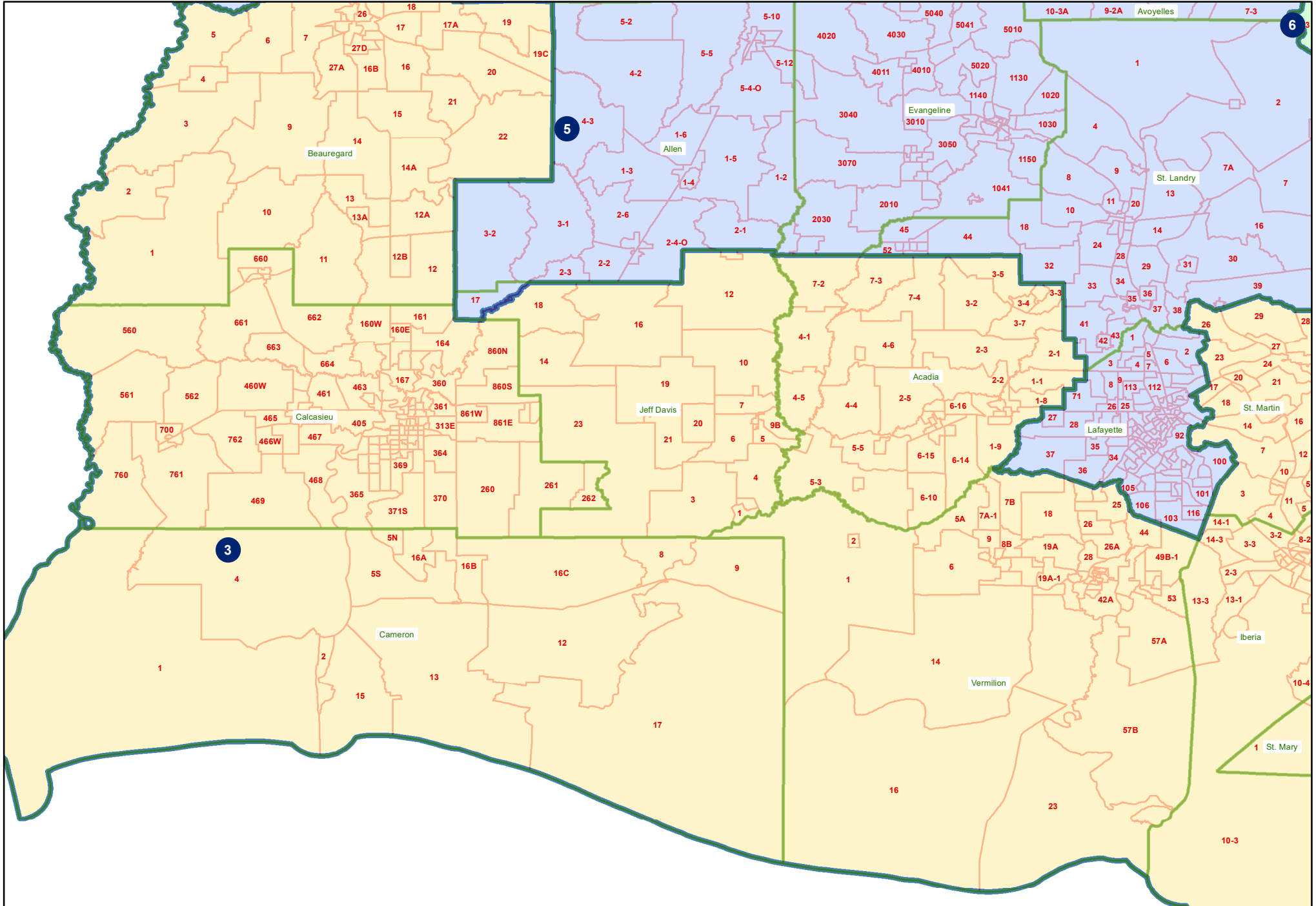
	Total Population	Total White	Total Black	Total Asian	Total American Indian	Total Other	VAP Total	VAP White	VAP Black	VAP Asian	VAP American Indian	VAP Other	Reg Total Dec 2021	Reg White Dec 2021	Reg Black Dec 2021	Reg Other Dec 2021
District 5	776,308	486,549	228,424	13,053	16,300	31,982	591,683	383,936	162,459	9,655	12,057	23,576	482,100	330,584	131,289	20,227
	100.000%	62.675%	29.424%	1.681%	2.100%	4.120%	100.000%	64.889%	27.457%	1.632%	2.038%	3.985%	81.479%	68.572%	27.233%	4.196%
District 6																
Ascension	126,500	81,141	32,216	2,300	2,004	8,839	91,957	61,136	22,139	1,514	1,390	5,778	79,917	56,800	18,814	4,303
*Assumption	6,359	2,805	3,360	21	37	136	5,010	2,262	2,587	14	25	122	4,614	2,019	2,536	59
East Baton Rouge	456,781	196,069	213,398	16,425	4,727	26,162	355,612	163,881	156,790	12,599	3,747	18,595	279,264	138,232	124,675	16,357
East Feliciana	19,539	11,516	7,341	91	262	329	16,183	9,740	5,918	61	198	266	13,600	7,959	5,186	455
Iberville	30,241	14,833	13,730	202	274	1,202	24,086	12,462	10,232	149	221	1,022	20,462	10,132	9,897	433
Pointe Coupee	20,758	12,395	7,504	107	159	593	16,250	10,108	5,502	91	119	430	14,675	9,320	5,121	234
St. Helena	10,920	4,527	6,031	39	134	189	8,463	3,805	4,371	28	109	150	8,321	3,628	4,565	128
St. James	20,192	9,973	9,762	60	82	315	15,505	7,883	7,297	31	64	230	14,966	7,254	7,501	211
St. John the Baptist	42,477	13,877	25,196	403	465	2,536	32,503	11,622	18,437	323	350	1,771	28,913	10,219	17,234	1,460
West Baton Rouge	27,199	14,307	11,170	287	326	1,109	20,526	11,146	8,149	209	219	803	17,141	9,937	6,865	339
West Feliciana	15,310	10,883	3,740	89	225	373	12,783	9,283	2,951	56	174	319	7,407	5,092	2,180	135
District 6	776,276	372,326	333,448	20,024	8,695	41,783	598,878	303,328	244,373	15,075	6,616	29,486	489,280	260,592	204,574	24,114
	100.000%	47.963%	42.955%	2.579%	1.120%	5.382%	100.000%	50.649%	40.805%	2.517%	1.105%	4.924%	81.699%	53.260%	41.811%	4.928%





# HCAHB4 474 13

## Southwest



# HCAHB4 474 13

## Southwest

