

SENATE COMMITTEE AMENDMENTS

2026 Regular Session

Amendments proposed by Senate Committee on Senate and Governmental Affairs to Original Senate Bill No. 121 by Senator Morris

1 AMENDMENT NO. 1

2 On page 1, delete lines 13 through 17

3 AMENDMENT NO. 2

4 Delete pages 2 through 4

5 AMENDMENT NO. 3

6 On page 5, delete lines 1 through 25, and insert:

7 "(1) District 1 is composed of Precincts 2-6, 2-7, 2-26 and 2-28 of East
 8 Baton Rouge Parish; East Feliciana Parish; Precincts 2, 3, 12, 16, 24, 25, 26, 27,
 9 28, 29, 30, 31, 32, 34, 35, 36, 37, 39, 40, 41, 42, 44, 45, 46, 132, 152, 155, 156,
 10 157A, 170, 187, 188, 198, 199, 203, 246, 247, 248, 1-GI, 1-K, 2-K, 5-K, 1-L, 6-W
 11 and 7-W of Jefferson Parish; Precincts 10-4, 10-6, 10-8, 10-9 and 10-10 of
 12 Lafourche Parish; Livingston Parish; Precincts 9-41B, 9-41C, 9-41D, 9-45,
 13 9-45A and 15-19A of Orleans Parish; Plaquemines Parish; Precincts 22, 25, 32,
 14 33, 34, 40, 41, 42, 42A, 43, 44, 45, 46, 50, 51, 52, 53, 54 and 55 of St. Bernard
 15 Parish; Precincts 4-2 and 4-3 of St. Charles Parish; St. Helena Parish; St.
 16 Tammany Parish; Tangipahoa Parish; Washington Parish and Precincts 1, 1A,
 17 1B, 2, 2A, 2B, 3, 3A, 5, 6, 6A, 7, 7A, 8, 8A, 8C, 10A, 10B, 11, 11A, 12, 12A and
 18 12B of West Feliciana Parish.

19 (2) District 2 is composed of Precincts 1, 4, 5, 7, 8, 9, 10, 11, 13, 14, 15,
 20 17, 18, 19, 20, 21, 22, 23, 33, 38, 43, 51, 52, 53, 54, 55, 56, 57, 58, 59, 60, 61, 62, 63,
 21 64, 65, 66, 68, 69, 70, 71, 72, 73, 74, 75, 76, 77, 78, 79, 80, 81, 82, 83, 84, 85, 86, 87,
 22 88, 89, 90, 91, 92, 93, 94, 95, 96, 97, 98, 99, 100, 101, 102, 103, 104, 105, 106, 108,
 23 115, 116, 117, 118, 119, 120, 121, 122, 123, 124, 125A, 125B, 126, 127, 128, 129,
 24 130, 131, 133, 134, 136, 138, 150A, 150B, 151, 153, 154, 171, 172, 173, 174, 175,
 25 176, 177, 178, 179A, 179B, 180, 181, 182, 183, 184, 185A, 185B, 189, 190, 191,
 26 192, 193A, 193B, 194A, 194B, 195, 196, 197A, 197B, 200, 201, 202, 204, 205, 210,
 27 211, 212, 213A, 213B, 213C, 214A, 214B, 215, 216A, 216B, 217, 225, 226, 227,
 28 228, 229, 230, 231, 232A, 232B, 234, 235, 236, 237, 238A, 238B, 1-G, 2-G, 3-G,
 29 4-G, 5-G, 6-G, 7-G, 8-G, 9-G, 10-G, 11-G, 12-G, 13-G, 1-H, 2-H, 3-H, 4-H, 6-H,
 30 7-H, 8-H, 9-H, 3-K, 4-K, 6-KA, 6-KB, 7-KA, 7-KB, 8-K, 9-K, 10-K, 11-K, 12-K,
 31 13-KA, 13-KB, 14-K, 15-K, 16-K, 17-K, 19-K, 20-K, 21-K, 22-K, 23-K, 24-K,
 32 25-K, 26-K, 27-K, 28-K, 29-K, 30-K, 31-K, 33-K, 34-K, 35-K, 1-W, 3-W, 4-W
 33 and 5-W of Jefferson Parish; Precincts 1-1, 1-2, 1-5, 1-6, 2-1, 2-2, 2-4, 2-6, 2-7,
 34 3-1, 3-8, 3-9, 3-12, 3-14, 3-15, 3-18, 3-19, 3-20, 4-2, 4-3, 4-6, 4-7, 4-8, 4-9, 4-11,
 35 4-14, 4-15, 4-17, 4-17A, 4-18, 4-20, 4-21, 4-22, 4-23, 5-1, 5-2, 5-3, 5-5, 5-7, 5-8,
 36 5-9, 5-10, 5-11, 5-12, 5-13, 5-15, 5-16, 5-17, 5-18, 6-1, 6-2, 6-4, 6-6, 6-7, 6-8, 6-9,
 37 7-1, 7-2, 7-4, 7-5, 7-6, 7-7, 7-8, 7-9A, 7-10, 7-11, 7-12, 7-13, 7-14, 7-15, 7-16, 7-17,
 38 7-18, 7-19, 7-20, 7-21, 7-23, 7-24, 7-25, 7-25A, 7-26, 7-27, 7-27B, 7-28, 7-28A,
 39 7-29, 7-30, 7-32, 7-33, 7-35, 7-37, 7-37A, 7-40, 7-41, 7-42, 8-1, 8-2, 8-4, 8-6, 8-7,
 40 8-8, 8-9, 8-12, 8-13, 8-14, 8-15, 8-19, 8-20, 8-21, 8-22, 8-23, 8-24, 8-25, 8-26, 8-27,
 41 8-28, 8-30, 9-1, 9-3, 9-4, 9-5, 9-6, 9-7, 9-8, 9-9, 9-10, 9-11, 9-12, 9-13, 9-14, 9-15,
 42 9-16, 9-17, 9-19, 9-21, 9-23, 9-25, 9-26, 9-28, 9-28C, 9-29, 9-30, 9-30A, 9-31,
 43 9-31A, 9-31B, 9-31D, 9-32, 9-33, 9-34A, 9-35, 9-35A, 9-36, 9-36B, 9-37, 9-38,
 44 9-38A, 9-39, 9-39B, 9-40, 9-40A, 9-40C, 9-41, 9-41A, 9-42, 9-42C, 9-43A, 9-43B,
 45 9-43C, 9-43E, 9-43F, 9-43G, 9-43H, 9-43I, 9-43J, 9-43K, 9-43L, 9-43M, 9-43N,
 46 9-44, 9-44A, 9-44B, 9-44D, 9-44E, 9-44F, 9-44G, 9-44I, 9-44J, 9-44L, 9-44M,
 47 9-44N, 9-44O, 9-44P, 9-44Q, 10-3, 10-6, 10-7, 10-8, 10-9, 10-11, 10-12, 10-13,
 48 10-14, 11-2, 11-3, 11-4, 11-5, 11-8, 11-9, 11-10, 11-11, 11-12, 11-13, 11-14, 11-17,
 49 12-1, 12-2, 12-3, 12-4, 12-5, 12-6, 12-7, 12-9, 12-10, 12-11, 12-12, 12-13, 12-14,

1 12-16, 12-17, 12-19, 13-1, 13-2, 13-3, 13-4, 13-5, 13-6, 13-7, 13-8, 13-9, 13-10,
 2 13-11, 13-12, 13-13, 13-14, 13-15, 13-16, 14-1, 14-2, 14-3, 14-4, 14-5, 14-6, 14-7,
 3 14-8, 14-9, 14-10, 14-11, 14-12, 14-13A, 14-14, 14-15, 14-16, 14-17, 14-18A, 14-19,
 4 14-20, 14-21, 14-23, 14-24A, 14-25, 14-26, 15-1, 15-2, 15-3, 15-5, 15-6, 15-8, 15-9,
 5 15-10, 15-11, 15-12, 15-12A, 15-13, 15-13A, 15-13B, 15-14, 15-14A, 15-14B,
 6 15-14C, 15-14D, 15-14E, 15-14F, 15-14G, 15-15, 15-15A, 15-15B, 15-16, 15-17,
 7 15-17A, 15-17B, 15-18, 15-18A, 15-18B, 15-18C, 15-18D, 15-18E, 15-18F, 15-19,
 8 15-19B, 15-19C, 16-1, 16-1A, 16-2, 16-3, 16-4, 16-5, 16-6, 16-7, 16-8, 16-9, 17-1,
 9 17-2, 17-3, 17-4, 17-5, 17-6, 17-7, 17-8, 17-9, 17-10, 17-11, 17-12, 17-13, 17-13A,
 10 17-14, 17-15, 17-16, 17-17, 17-18, 17-18A, 17-19 and 17-20 of Orleans Parish;
 11 Precincts 10, 11, 12, 13, 14, 15, 20, 21, 23, 24, 30 and 31 of St. Bernard Parish
 12 and Precincts 2-3, 2-4, 2-5, 5-1, 5-3, 5-4, 5-5 and 7-3 of St. Charles Parish.

13 (3) District 3 is composed of Precincts 1-1, 1-2, 1-3, 1-4, 1-5, 1-6, 1-7, 1-8,
 14 2-1, 2-2, 2-3, 2-4, 2-5, 4-1, 4-2, 4-3, 4-4, 4-5, 4-6, 5-1, 5-2, 5-3, 5-4, 5-5, 6-1, 6-2,
 15 6-3, 6-4, 6-5, 6-6, 6-7, 6-8, 6-10, 6-12, 6-13, 6-14, 6-15, 6-16, 7-2, 7-3 and 7-4 of
 16 Acadia Parish; Allen Parish; Precincts 160E, 161, 163, 164, 165, 166E, 166W,
 17 167, 260, 261, 262, 300, 301, 309E, 313E, 324, 360, 361, 364, 370, 371S, 800, 801,
 18 860N, 860S, 861E and 861W of Calcasieu Parish; Cameron Parish; Precincts
 19 2020 of Evangeline Parish; Precincts 1-1, 1-3, 1-7, 1-8, 2-1, 2-2, 2-3, 3-2, 3-3, 3-4,
 20 3-5, 4-1, 4-2, 4-3, 5-1, 5-2, 5-3, 5-5, 6-1, 6-2, 6-4, 6-5, 7-1, 7-2, 7-4, 7-5, 8-1, 8-2,
 21 8-3, 9-1, 9-4, 9-5, 10-1, 10-2, 10-3, 10-4, 11-3, 11-4, 11-5, 11-6, 12-1, 12-2, 12-3,
 22 12-4, 13-1, 13-2, 13-3, 13-4, 13-5, 14-1, 14-3, 14-4 and 14-5 of Iberia Parish;
 23 Jefferson Davis Parish; Lafayette Parish; Precincts 1-1, 1-2, 1-3, 1-4, 1-5, 1-6,
 24 2-1, 2-1A, 2-2, 2-3, 2-5, 2-6, 2-7, 2-8, 2-9, 2-10, 2-11, 2-12, 2-13, 2-14, 2-15, 2-16,
 25 3-1, 3-2, 3-3, 3-4, 3-5, 3-6, 3-7, 4-1, 4-2, 4-3, 4-4, 4-5, 4-6, 5-1, 5-1A, 5-2, 5-3, 6-1,
 26 6-2, 6-3, 6-4, 6-5, 7-1, 7-2, 7-3, 7-4, 8-1, 9-1, 9-2, 10-1, 10-2, 10-3, 10-11, 10-12,
 27 10-13, 10-14, 10-15, 10-16, 11-1, 11-2, 11-3, 11-4 and 11-5 of Lafourche Parish;
 28 St. Mary Parish; Terrebonne Parish and Vermilion Parish.

29 (4) District 4 is composed of Beauregard Parish; Bienville Parish;
 30 Bossier Parish; Caddo Parish; Precincts 160W, 162E, 162W, 302, 303, 304, 305,
 31 306, 307, 308, 309W, 310, 311, 312, 313W, 314, 315E, 315W, 316E, 316W, 317,
 32 318, 319N, 319S, 320E, 320W, 321, 322, 323, 325, 326, 327, 328, 329, 330, 331,
 33 332N, 332S, 333, 334, 335, 336, 337, 338, 339, 340, 362, 363, 365, 366, 367, 368,
 34 369, 371N, 372, 400, 401, 402, 403, 404, 405, 406, 407, 408, 440, 441, 460E, 460W,
 35 461, 463, 464, 465, 466E, 466W, 467, 468, 469, 560, 561, 562, 600, 601, 602, 603,
 36 660, 661, 662, 663, 664, 700, 701, 702, 703, 760, 761 and 762 of Calcasieu Parish;
 37 Claiborne Parish; De Soto Parish; Natchitoches Parish; Precincts S1, S2 and S9
 38 of Rapides Parish; Red River Parish; Sabine Parish; Vernon Parish and
 39 Webster Parish.

40 (5) District 5 is composed of Precincts 3-1, 3-2, 3-3, 3-4, 3-5 and 3-7 of
 41 Acadia Parish; Precincts 5-3 and 9-1 of Assumption Parish; Avoyelles Parish;
 42 Caldwell Parish; Catahoula Parish; Concordia Parish; East Carroll Parish;
 43 Precincts 1010, 1020, 1030, 1031, 1040, 1041, 1050, 1080, 1081, 1090, 1091, 1100,
 44 1101, 1110, 1120, 1130, 1140, 1150, 1160, 1161, 1162, 1170, 1171, 2010, 2010A,
 45 2030, 2040, 3010, 3020, 3030, 3031, 3032, 3040, 3050, 3051, 3052, 3060, 3070,
 46 3071, 4001, 4010, 4011, 4012, 4020, 4021, 4030, 4040, 5004, 5010, 5020, 5030,
 47 5040, 5041 and 5050 of Evangeline Parish; Franklin Parish; Grant Parish;
 48 Precincts 9-2 and 11-1 of Iberia Parish; Jackson Parish; La Salle Parish;
 49 Lincoln Parish; Madison Parish; Morehouse Parish; Ouachita Parish; Precincts
 50 C1, C2, C3, C4, C5, C6, C7, C8, C9, C10, C11-A, C11-B, C13, C14, C15, C17,
 51 C18, C19, C20, C21, C22, C23, C24, C25, C26, C27, C28, C30, C31, C32, C33,
 52 C34, C35, C36, C37-A, C37-B, C38-A, C38-B, C39, C40, C41, C42, N1, N2, N3,
 53 N4, N5, N6, N7, N8, N9, N10, N11, N12, N13-A, N13-B, N14-A, N14-B, N15, N16,
 54 N17, N18-A, N18-B, N19, N20, N21, N22, N23, N24, N25, N26, N27, N28, N29,
 55 S4, S5, S6A, S6B, S7, S8, S10, S11, S13, S14, S15, S16, S17, S18, S19, S20, S21,
 56 S22, S23, S24, S25, S26, S27, S28 and S29 of Rapides Parish; Richland Parish;
 57 Precincts 1A, 1B, 1D, 2, 2B, 4, 4A, 4B, 6, 7, 7A, 8, 9, 9A, 10, 10A, 11, 11B, 12, 13,
 58 13A, 14, 14A, 14B, 15, 16, 18, 18A, 18B, 19, 19A, 20, 20B, 21, 21A, 22, 22B, 23,
 59 23A, 24, 24B, 25, 26, 26A, 27, 28, 29, 29A, 30, 30A, 30B, 31, 32, 32A, 33, 33A, 34,
 60 34A, 35, 36, 37, 37A, 38, 39, 39A, 40, 41, 41A, 42, 43, 44, 44A, 44B, 45, 46, 47, 48,
 61 49, 50, 50A, 51, 51A and 52 of St. Landry Parish; St. Martin Parish; Tensas
 62 Parish; Union Parish; West Carroll Parish and Winn Parish.

1 **(6) District 6 is composed of Ascension Parish; Precincts 1-1, 1-2, 1-3,**
 2 **2-1, 2-3, 2-4, 2-5, 3-1, 3-2, 4-1, 4-3, 4-4, 5-1, 5-2, 5-5, 6-1, 6-2, 6-3, 7-1, 7-2, 7-3**
 3 **and 8-1 of Assumption Parish; Precincts 1-1, 1-2, 1-3, 1-4, 1-5, 1-6, 1-7, 1-8, 1-9,**
 4 **1-10, 1-11, 1-12, 1-13, 1-14, 1-15, 1-16, 1-18, 1-19, 1-20, 1-21, 1-22, 1-23, 1-24,**
 5 **1-25, 1-26, 1-27, 1-28, 1-29, 1-30, 1-31, 1-32, 1-33, 1-34, 1-35, 1-36, 1-37, 1-38,**
 6 **1-39, 1-40, 1-41, 1-42, 1-43, 1-44, 1-45, 1-46, 1-47, 1-48, 1-49, 1-50, 1-51, 1-52,**
 7 **1-53, 1-54, 1-55, 1-56, 1-57, 1-58, 1-59, 1-60, 1-61, 1-62, 1-63, 1-64, 1-65, 1-66,**
 8 **1-67, 1-69, 1-70, 1-71, 1-72, 1-73, 1-74, 1-75, 1-76, 1-77, 1-78, 1-79, 1-80, 1-81,**
 9 **1-82, 1-83, 1-84, 1-85, 1-86, 1-87, 1-88, 1-89, 1-90, 1-91, 1-92, 1-93, 1-94, 1-95,**
 10 **1-96, 1-97, 1-98, 1-99, 1-100, 1-101, 1-102, 1-103, 1-104, 1-105, 1-106, 1-107, 2-1,**
 11 **2-2, 2-3, 2-4, 2-5, 2-8, 2-9, 2-10, 2-11, 2-12, 2-13, 2-14, 2-15, 2-16, 2-17, 2-18, 2-19,**
 12 **2-20, 2-21, 2-22, 2-23, 2-24, 2-25, 2-27, 2-29, 2-30, 2-31, 2-32, 2-33, 2-34, 2-35,**
 13 **2-36, 2-37, 2-38, 3-1, 3-2, 3-3, 3-4, 3-5, 3-6, 3-7, 3-8, 3-9, 3-10, 3-11, 3-12, 3-13,**
 14 **3-14, 3-15, 3-16, 3-17, 3-18, 3-19, 3-20, 3-21, 3-22, 3-23, 3-24, 3-25, 3-26, 3-27,**
 15 **3-28, 3-29, 3-30, 3-31, 3-32, 3-33, 3-34, 3-35, 3-36, 3-37, 3-38, 3-39, 3-40, 3-41,**
 16 **3-42, 3-43, 3-44, 3-45, 3-46, 3-47, 3-48, 3-49, 3-50, 3-51, 3-52, 3-53, 3-54, 3-55,**
 17 **3-56, 3-57, 3-58, 3-59, 3-60, 3-61, 3-62, 3-63, 3-64, 3-65, 3-66, 3-67, 3-68, 3-69,**
 18 **3-70, 3-71, 3-72, 3-73, 3-74, 3-75 and 3-76 of East Baton Rouge Parish; Iberville**
 19 **Parish; Pointe Coupee Parish; Precincts 1-1, 1-2, 1-3, 1-4, 1-5, 1-6, 2-1, 2-6, 3-1,**
 20 **3-2, 3-3, 4-1, 4-4, 4-5, 6-1, 6-2, 6-3, 6-4, 6-6, 7-1, 7-2, 7-4 and 7-5 of St. Charles**
 21 **Parish; St. James Parish; St. John the Baptist Parish; Precincts 1, 1C, 2A, 2C,**
 22 **3, 5, 16A and 17 of St. Landry Parish; West Baton Rouge Parish and Precincts**
 23 **4, 9, 10 and 13 of West Feliciana Parish."**

Plan Statistics

Plan: SCA SB121-3686

<u>Districts:</u>	<u># of Members</u>	<u>Actual Population</u>	<u>Ideal Population</u>	<u>Absolute Deviation</u>	<u>Relative Deviation</u>
District 1	1	776,320	776,292	28	0.004%
District 2	1	776,332	776,292	40	0.005%
District 3	1	776,314	776,292	22	0.003%
District 4	1	776,263	776,292	-29	-0.004%
District 5	1	776,280	776,292	-12	-0.002%
District 6	1	776,248	776,292	-44	-0.006%
Grand Total:	6	4,657,757	4,657,752		

Ideal Population Per Member:	776292		
Number of Districts for Plan Type:	6		
Range of District Populations:	776,248	to	776,332
Absolute Mean Deviation:	14		
Absolute Range:	-44	to	40
Absolute Overall Range:	84		
Relative Mean Deviation:	0.00%		
Relative Range:	-0.01%	to	0.01%
Relative Overall Range:	0.02%		

<i>Ideal - Actual:</i>	-5
<i>Remainder:</i>	5
<i>Unassigned Population:</i>	0

Total Population

Plan: SCA SB121-3686

	Total Population	Total White	Total Black	Total Asian	Total American Indian	Total Other	Total Hispanic	VAP Total	VAP White	VAP Black	VAP Asian	VAP American Indian	VAP Other	VAP Hispanic Total
District 1	776,320	534,241	159,457	18,131	16,197	48,294	58,252	589,906	419,835	111,356	13,298	11,954	33,463	39,035
	100.000%	68.817%	20.540%	2.336%	2.086%	6.221%	7.504%	100.000%	71.170%	18.877%	2.254%	2.026%	5.673%	6.617%
District 2	776,332	322,562	333,991	30,292	10,576	78,911	101,843	612,242	273,134	250,384	23,701	8,182	56,841	72,806
	100.000%	41.549%	43.022%	3.902%	1.362%	10.165%	13.118%	100.000%	44.612%	40.896%	3.871%	1.336%	9.284%	11.892%
District 3	776,314	514,497	187,840	14,886	21,166	37,925	45,608	587,159	404,646	131,323	10,678	14,552	25,960	30,799
	100.000%	66.274%	24.196%	1.918%	2.726%	4.885%	5.875%	100.000%	68.916%	22.366%	1.819%	2.478%	4.421%	5.245%
District 4	776,263	448,071	265,036	14,285	18,185	30,686	37,735	590,633	354,936	190,355	10,344	13,683	21,315	25,195
	100.000%	57.722%	34.143%	1.840%	2.343%	3.953%	4.861%	100.000%	60.094%	32.229%	1.751%	2.317%	3.609%	4.266%
District 5	776,280	461,666	269,697	9,365	12,124	23,428	27,751	593,072	365,925	193,288	7,133	9,183	17,543	20,234
	100.000%	59.472%	34.742%	1.206%	1.562%	3.018%	3.575%	100.000%	61.700%	32.591%	1.203%	1.548%	2.958%	3.412%
District 6	776,248	376,615	327,098	20,329	8,812	43,394	51,360	597,536	306,035	239,063	15,262	6,686	30,490	35,593
	100.000%	48.517%	42.138%	2.619%	1.135%	5.590%	6.616%	100.000%	51.216%	40.008%	2.554%	1.119%	5.103%	5.957%
Grand Total	4,657,757	2,657,652	1,543,119	107,288	87,060	262,638	322,549	3,570,548	2,124,511	1,115,769	80,416	64,240	185,612	223,662
	100.000%	57.059%	33.130%	2.303%	1.869%	5.639%	6.925%	100.000%	59.501%	31.249%	2.252%	1.799%	5.198%	6.264%

Voter Registration

Plan: SCA SB121-3686

	Reg Total Dec 2025	Reg White Dec 2025	Reg Black Dec 2025	Reg Other Dec 2025	Reg Dem Total Dec 2025	Reg Rep Total Dec 2025	Reg Other Total Dec 2025
District 1	443,040	340,175	75,255	27,610	111,122	206,065	125,853
	75.103%	76.782%	16.986%	6.232%	25.082%	46.512%	28.407%
District 2	418,159	199,914	171,372	46,873	210,146	87,671	120,342
	68.300%	47.808%	40.982%	11.209%	50.255%	20.966%	28.779%
District 3	419,298	315,077	83,434	20,787	117,890	187,891	113,517
	71.411%	75.144%	19.898%	4.958%	28.116%	44.811%	27.073%
District 4	391,714	256,579	115,832	19,303	128,753	161,942	101,019
	66.321%	65.502%	29.571%	4.928%	32.869%	41.342%	25.789%
District 5	413,018	278,441	122,984	11,593	141,779	175,635	95,604
	69.640%	67.416%	29.777%	2.807%	34.328%	42.525%	23.148%
District 6	425,044	233,792	168,092	23,160	181,393	134,869	108,782
	71.133%	55.004%	39.547%	5.449%	42.676%	31.731%	25.593%
Grand Total	2,510,273	1,623,978	736,969	149,326	891,083	954,073	665,117

Splits

Plan: SCA SB121-3686

	Total Population	Total White	Total Black	Total Asian	Total American Indian	Total Other	VAP Total	VAP White	VAP Black	VAP Asian	VAP American Indian	VAP Other	Reg Total Dec 2025	Reg White Dec 2025	Reg Black Dec 2025	Reg Other Dec 2025
District 1																
*East Baton Rouge	9,843	5,543	3,889	56	163	192	7,477	4,330	2,840	40	116	151	6,158	3,626	2,352	180
East Feliciana	19,539	11,516	7,341	91	262	329	16,183	9,740	5,918	61	198	266	12,351	7,454	4,521	376
*Jefferson	72,969	42,473	16,138	4,248	1,397	8,713	57,076	35,017	11,498	3,280	1,049	6,232	40,027	28,108	7,127	4,792
*Lafourche	7,657	6,067	183	69	766	572	5,909	4,846	104	60	529	370	3,574	3,288	24	262
Livingston	142,282	116,855	12,658	1,697	3,111	7,961	105,141	88,432	8,136	1,099	2,311	5,163	80,500	70,919	6,317	3,264
*Orleans	9,703	1,771	4,519	2,320	80	1,013	6,803	1,488	2,714	1,908	53	640	4,126	962	1,733	1,431
Plaquemines	23,515	14,287	5,428	1,317	697	1,786	17,334	10,856	3,857	925	500	1,196	12,130	8,278	2,670	1,182
*St. Bernard	25,245	14,473	7,314	718	532	2,208	18,215	10,979	4,804	497	398	1,537	13,692	9,195	3,497	1,000
*St. Charles	3,258	2,922	109	29	69	129	2,476	2,249	68	15	51	93	2,013	1,894	49	70
St. Helena	10,920	4,527	6,031	39	134	189	8,463	3,805	4,371	28	109	150	7,499	3,388	3,994	117
St. Tammany	264,570	196,641	38,643	5,774	5,660	17,852	202,228	154,621	26,761	4,075	4,161	12,610	168,850	135,893	21,206	11,751
Tangipahoa	133,157	81,336	41,879	1,474	2,454	6,014	101,491	65,205	29,217	1,100	1,827	4,142	61,941	45,629	13,843	2,469
Washington	45,463	29,943	13,434	216	736	1,134	34,951	23,743	9,732	154	561	761	24,047	16,788	6,668	591
*West Feliciana	8,199	5,887	1,891	83	136	202	6,159	4,524	1,336	56	91	152	6,132	4,753	1,254	125
District 1	776,320	534,241	159,457	18,131	16,197	48,294	589,906	419,835	111,356	13,298	11,954	33,463	443,040	340,175	75,255	27,610
	100.000%	68.817%	20.540%	2.336%	2.086%	6.221%	100.000%	71.170%	18.877%	2.254%	2.026%	5.673%	75.103%	76.782%	16.986%	6.232%
District 2																
*Jefferson	367,812	178,462	110,079	18,776	6,289	54,206	287,578	149,118	80,677	14,412	4,786	38,585	186,792	109,321	50,690	26,781
*Orleans	374,294	124,691	214,450	10,536	3,586	21,031	299,393	108,764	163,354	8,612	2,895	15,768	213,433	78,414	116,482	18,537
*St. Bernard	18,519	10,024	4,995	663	415	2,422	13,560	8,013	3,140	485	290	1,632	8,514	5,856	1,783	875
*St. Charles	15,707	9,385	4,467	317	286	1,252	11,711	7,239	3,213	192	211	856	9,420	6,323	2,417	680
District 2	776,332	322,562	333,991	30,292	10,576	78,911	612,242	273,134	250,384	23,701	8,182	56,841	418,159	199,914	171,372	46,873
	100.000%	41.549%	43.022%	3.902%	1.362%	10.165%	100.000%	44.612%	40.896%	3.871%	1.336%	9.284%	68.300%	47.808%	40.982%	11.209%
District 3																
*Acadia	48,568	38,062	8,724	205	477	1,100	36,345	29,177	5,967	151	331	719	28,516	23,905	4,047	564
Allen	22,750	16,327	4,490	246	947	740	17,510	12,751	3,275	182	646	656	10,797	8,567	1,777	453
*Calcasieu	51,830	32,494	15,939	645	827	1,925	38,424	24,795	11,329	419	591	1,290	25,497	17,417	7,042	1,038
Cameron	5,617	5,232	125	30	75	155	4,358	4,100	79	23	47	109	3,924	3,790	49	85
*Evangeline	1,099	531	198	35	13	322	876	383	138	32	10	313	305	256	34	15
*Iberia	66,202	36,419	23,771	2,107	757	3,148	49,984	29,131	16,536	1,549	556	2,212	34,635	22,213	10,842	1,580
Jefferson Davis	32,250	25,066	5,837	183	472	692	24,039	19,121	4,006	111	325	476	18,329	15,215	2,660	454
Lafayette	241,753	153,363	65,136	6,454	3,210	13,590	183,875	121,608	45,917	4,664	2,387	9,299	138,622	100,332	30,449	7,841
*Lafourche	89,900	65,643	15,672	956	3,458	4,171	68,710	51,992	10,973	678	2,248	2,819	48,764	40,782	5,766	2,216
St. Mary	49,406	26,949	15,991	835	1,670	3,961	37,521	21,594	11,520	593	1,173	2,641	26,695	16,701	8,512	1,482
Terrebonne	109,580	69,934	23,147	1,743	8,637	6,119	82,505	55,631	15,796	1,239	5,750	4,089	50,552	38,219	8,430	3,903

Splits

Plan: SCA SB121-3686

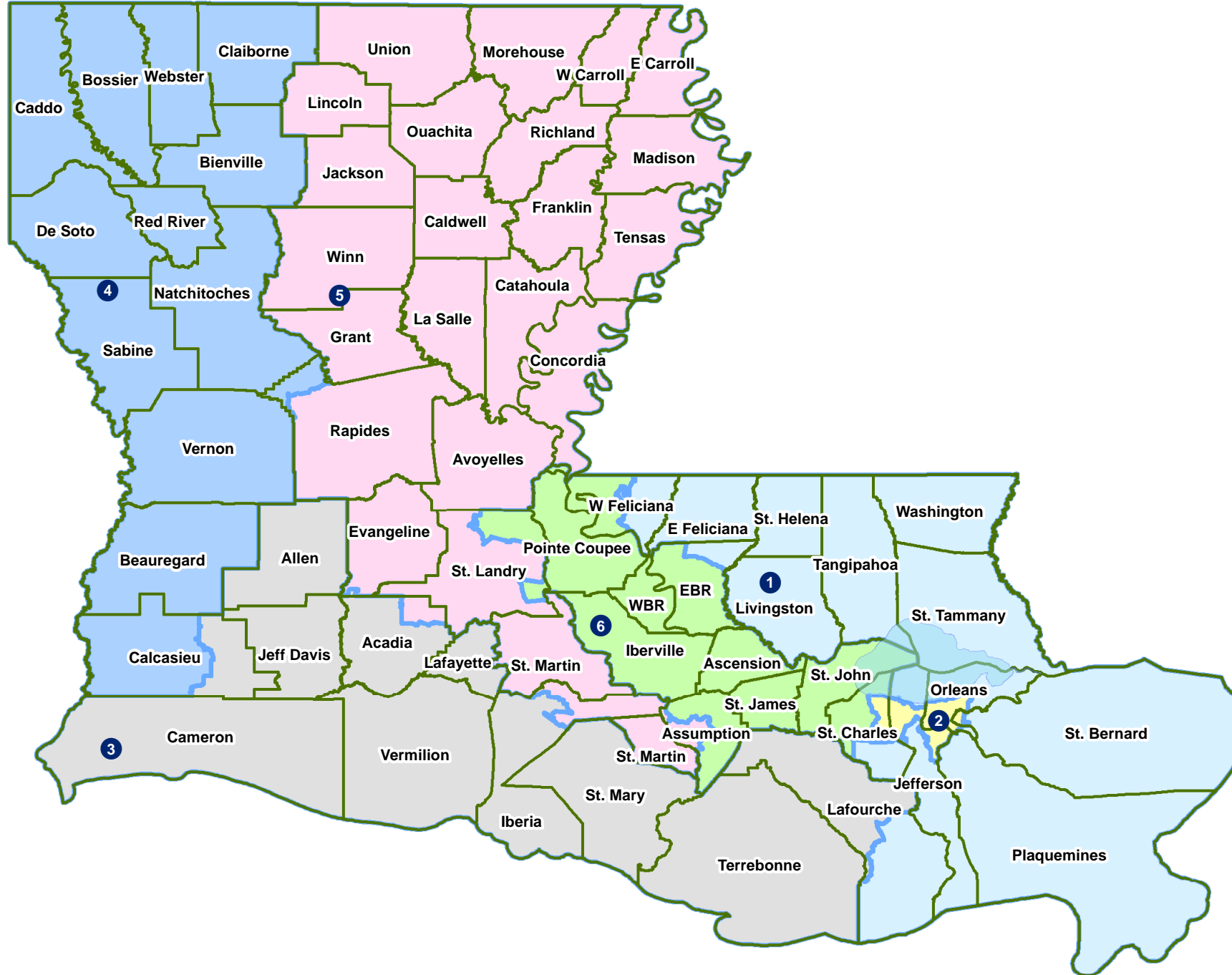
	Total Population	Total White	Total Black	Total Asian	Total American Indian	Total Other	VAP Total	VAP White	VAP Black	VAP Asian	VAP American Indian	VAP Other	Reg Total Dec 2025	Reg White Dec 2025	Reg Black Dec 2025	Reg Other Dec 2025
District 3																
Vermilion	57,359	44,477	8,810	1,447	623	2,002	43,012	34,363	5,787	1,037	488	1,337	32,662	27,680	3,826	1,156
District 3	776,314	514,497	187,840	14,886	21,166	37,925	587,159	404,646	131,323	10,678	14,552	25,960	419,298	315,077	83,434	20,787
	100.000%	66.274%	24.196%	1.918%	2.726%	4.885%	100.000%	68.916%	22.366%	1.819%	2.478%	4.421%	71.411%	75.144%	19.898%	4.958%
District 4																
Beauregard	36,549	29,529	4,649	402	1,052	917	27,489	22,304	3,495	269	773	648	21,046	18,067	1,899	1,080
Bienville	12,981	6,950	5,600	57	207	167	10,073	5,486	4,284	30	162	111	7,942	4,439	3,395	108
Bossier	128,746	81,052	32,551	3,492	3,273	8,378	95,876	62,931	22,440	2,448	2,477	5,580	64,006	46,899	13,127	3,980
Caddo	237,848	103,457	119,304	4,034	3,840	7,213	182,407	85,059	86,359	3,008	2,958	5,023	119,564	60,348	53,615	5,601
*Calcasieu	164,955	107,278	43,447	4,057	2,709	7,464	124,742	83,994	30,569	2,940	2,013	5,226	77,845	57,936	16,235	3,674
Claiborne	14,170	7,263	6,360	88	185	274	11,507	6,258	4,824	55	140	230	7,439	4,211	3,098	130
De Soto	26,812	15,284	9,973	117	740	698	20,440	11,909	7,425	86	557	463	17,070	10,834	5,690	546
Natchitoches	37,515	19,361	15,725	255	861	1,313	29,349	16,010	11,415	198	683	1,043	19,037	11,182	7,026	829
*Rapides	1,195	844	170	14	137	30	958	684	128	13	116	17	706	523	100	83
Red River	7,620	4,195	3,106	25	171	123	5,714	3,338	2,164	3	116	93	4,877	2,722	2,077	78
Sabine	22,155	15,036	3,861	94	2,723	441	17,064	12,054	2,655	66	1,970	319	12,460	9,625	1,573	1,262
Vernon	48,750	35,087	7,611	1,442	1,600	3,010	36,261	26,765	5,133	1,074	1,160	2,129	20,095	16,478	2,120	1,497
Webster	36,967	22,735	12,679	208	687	658	28,753	18,144	9,464	154	558	433	19,627	13,315	5,877	435
District 4	776,263	448,071	265,036	14,285	18,185	30,686	590,633	354,936	190,355	10,344	13,683	21,315	391,714	256,579	115,832	19,303
	100.000%	57.722%	34.143%	1.840%	2.343%	3.953%	100.000%	60.094%	32.229%	1.751%	2.317%	3.609%	66.321%	65.502%	29.571%	4.928%
District 5																
*Acadia	9,008	6,418	2,140	33	96	321	6,598	4,894	1,416	22	69	197	5,067	3,898	1,050	119
*Assumption	2,859	2,665	105	5	21	63	2,352	2,213	67	4	18	50	1,686	1,638	33	15
Avoyelles	39,693	25,625	11,678	434	767	1,189	30,578	20,269	8,311	379	570	1,049	19,578	14,184	4,858	536
Caldwell	9,645	7,646	1,632	51	150	166	7,478	5,969	1,224	46	116	123	5,381	4,671	631	79
Catahoula	8,906	5,776	2,395	46	119	570	6,951	4,557	1,736	33	87	538	5,626	4,104	1,469	53
Concordia	18,687	10,275	7,725	122	233	332	14,217	8,108	5,613	100	167	229	9,841	5,984	3,689	168
East Carroll	7,459	2,054	5,272	29	43	61	5,901	1,773	4,043	19	27	39	3,106	1,043	2,038	25
*Evangeline	31,251	20,823	9,037	206	267	918	23,532	16,077	6,345	155	207	748	17,871	12,791	4,750	330
Franklin	19,774	12,492	6,802	70	205	205	15,028	9,901	4,779	44	153	151	11,061	7,867	3,088	106
Grant	22,169	17,709	3,335	133	644	348	17,527	13,964	2,717	97	507	242	11,346	10,130	908	308
*Iberia	3,727	2,787	785	16	37	102	2,807	2,164	533	13	25	72	2,309	1,827	425	57
Jackson	15,031	9,967	4,166	175	255	468	11,783	7,967	3,125	140	174	377	8,696	6,253	2,256	187
La Salle	14,791	11,348	1,422	283	372	1,366	11,563	8,636	1,065	264	271	1,327	7,863	7,218	496	149
Lincoln	48,396	26,034	19,364	892	662	1,444	38,655	21,306	15,119	744	526	960	21,272	14,028	6,505	739
Madison	10,017	3,475	6,363	20	59	100	7,435	2,906	4,391	9	48	81	5,394	2,046	3,272	76

Splits

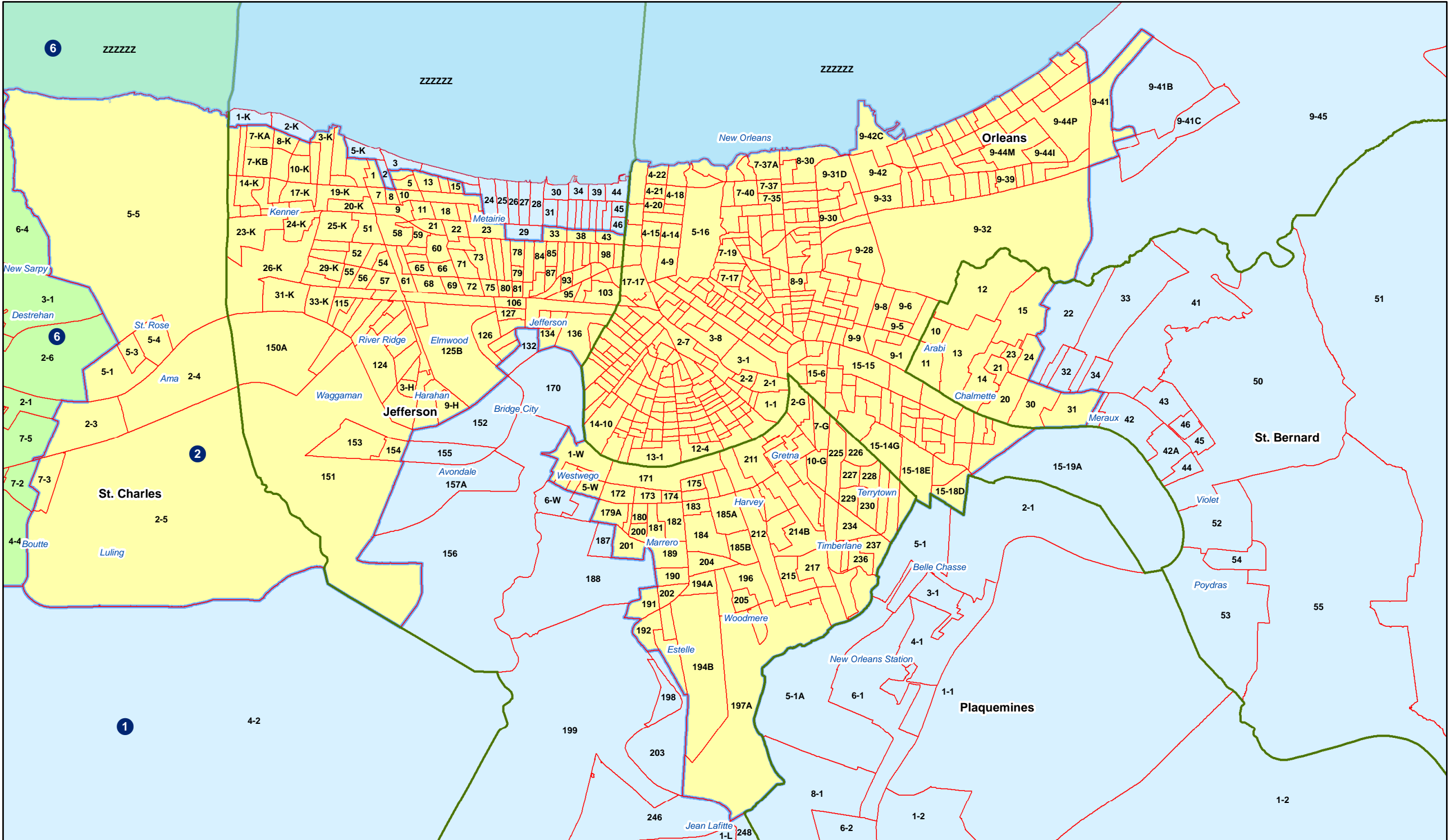
Plan: SCA SB121-3686

	Total Population	Total White	Total Black	Total Asian	Total American Indian	Total Other	VAP Total	VAP White	VAP Black	VAP Asian	VAP American Indian	VAP Other	Reg Total Dec 2025	Reg White Dec 2025	Reg Black Dec 2025	Reg Other Dec 2025
District 5																
Morehouse	25,629	12,281	12,484	160	370	334	20,062	10,095	9,300	117	279	271	13,316	7,098	5,961	257
Ouachita	160,368	88,545	61,217	2,788	2,661	5,157	120,200	69,974	42,290	2,118	2,059	3,759	80,532	51,940	25,840	2,752
*Rapides	128,828	76,666	42,422	2,414	2,965	4,361	97,834	60,689	30,077	1,773	2,218	3,077	65,513	45,284	17,387	2,842
Richland	20,043	11,785	7,603	83	258	314	15,383	9,338	5,546	66	203	230	11,325	7,443	3,669	213
*St. Landry	79,472	41,344	35,141	486	594	1,907	59,479	32,439	25,004	342	426	1,268	47,215	26,215	19,717	1,283
St. Martin	51,767	33,259	15,921	597	539	1,451	39,404	26,278	11,293	407	413	1,013	31,057	21,902	8,435	720
Tensas	4,147	1,744	2,312	23	26	42	3,235	1,446	1,728	12	23	26	3,024	1,324	1,670	30
Union	21,107	14,460	5,224	62	338	1,023	16,632	11,807	3,861	39	254	671	12,695	9,794	2,521	380
West Carroll	9,751	7,894	1,425	27	180	225	7,532	6,223	1,010	20	136	143	5,144	4,493	598	53
Winn	13,755	8,594	3,727	210	263	961	10,906	6,932	2,695	170	207	902	7,100	5,266	1,718	116
District 5	776,280	461,666	269,697	9,365	12,124	23,428	593,072	365,925	193,288	7,133	9,183	17,543	413,018	278,441	122,984	11,593
	100.000%	59.472%	34.742%	1.206%	1.562%	3.018%	100.000%	61.700%	32.591%	1.203%	1.548%	2.958%	69.640%	67.416%	29.777%	2.807%
District 6																
Ascension	126,500	81,141	32,216	2,300	2,004	8,839	91,957	61,136	22,139	1,514	1,390	5,778	75,109	52,976	18,008	4,125
*Assumption	18,180	11,057	6,115	91	237	680	14,264	8,932	4,640	53	179	460	10,501	6,782	3,533	186
*East Baton Rouge	446,938	190,526	209,509	16,369	4,564	25,970	348,135	159,551	153,950	12,559	3,631	18,444	231,090	116,128	100,013	14,949
Iberville	30,241	14,833	13,730	202	274	1,202	24,086	12,462	10,232	149	221	1,022	17,544	9,156	8,004	384
Pointe Coupee	20,758	12,395	7,504	107	159	593	16,250	10,108	5,502	91	119	430	13,201	8,675	4,295	231
*St. Charles	33,584	21,243	9,352	491	570	1,928	25,354	16,666	6,609	322	405	1,352	20,248	14,070	5,000	1,178
St. James	20,192	9,973	9,762	60	82	315	15,505	7,883	7,297	31	64	230	13,459	6,775	6,465	219
St. John the Baptist	42,477	13,877	25,196	403	465	2,536	32,503	11,622	18,437	323	350	1,771	24,699	8,070	15,169	1,460
*St. Landry	3,068	2,267	695	13	42	51	2,332	1,770	493	11	25	33	2,166	1,564	571	31
West Baton Rouge	27,199	14,307	11,170	287	326	1,109	20,526	11,146	8,149	209	219	803	15,696	9,027	6,292	377
*West Feliciana	7,111	4,996	1,849	6	89	171	6,624	4,759	1,615	0	83	167	1,331	569	742	20
District 6	776,248	376,615	327,098	20,329	8,812	43,394	597,536	306,035	239,063	15,262	6,686	30,490	425,044	233,792	168,092	23,160
	100.000%	48.517%	42.138%	2.619%	1.135%	5.590%	100.000%	51.216%	40.008%	2.554%	1.119%	5.103%	71.133%	55.004%	39.547%	5.449%

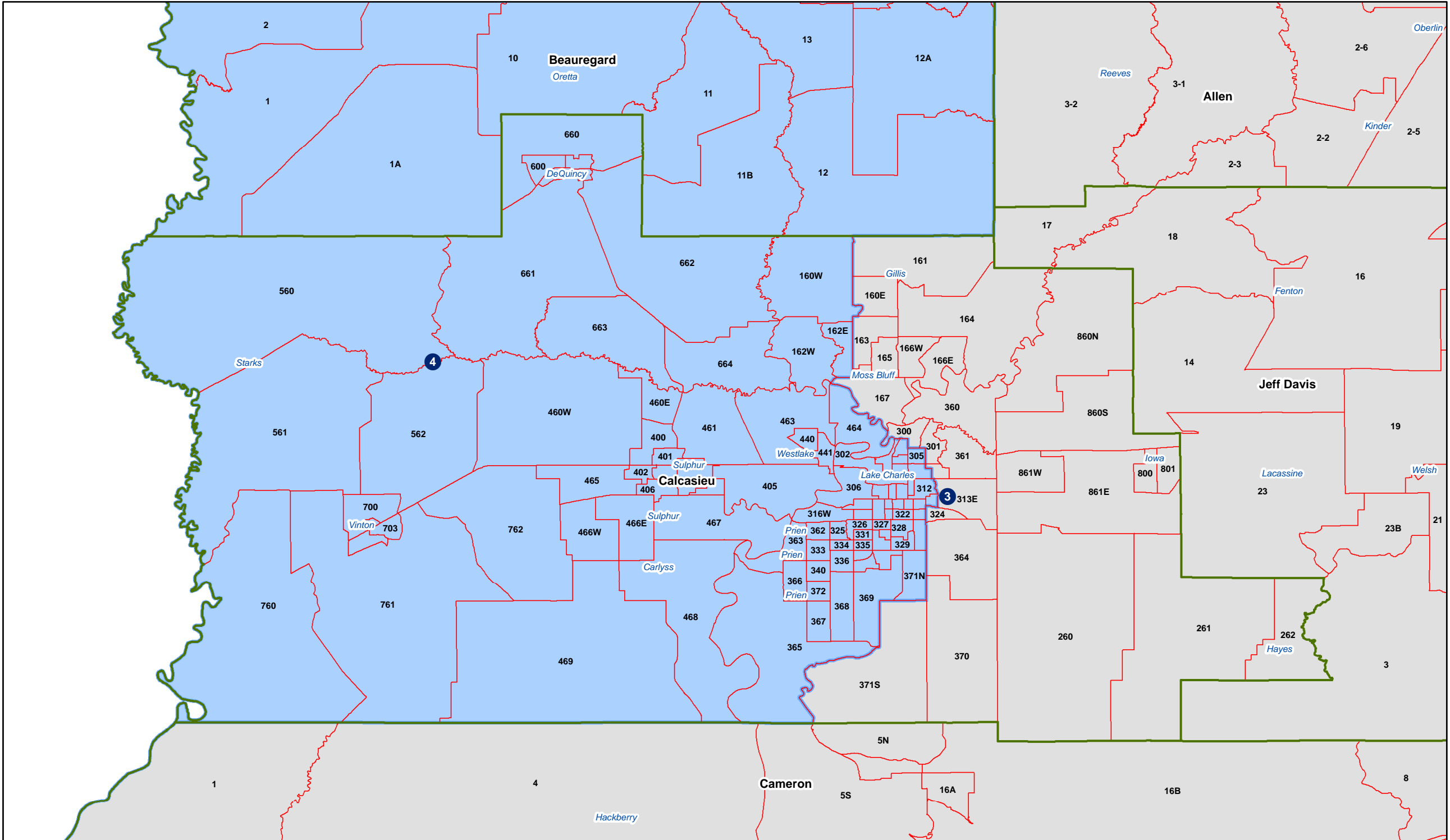
Congress - Statewide



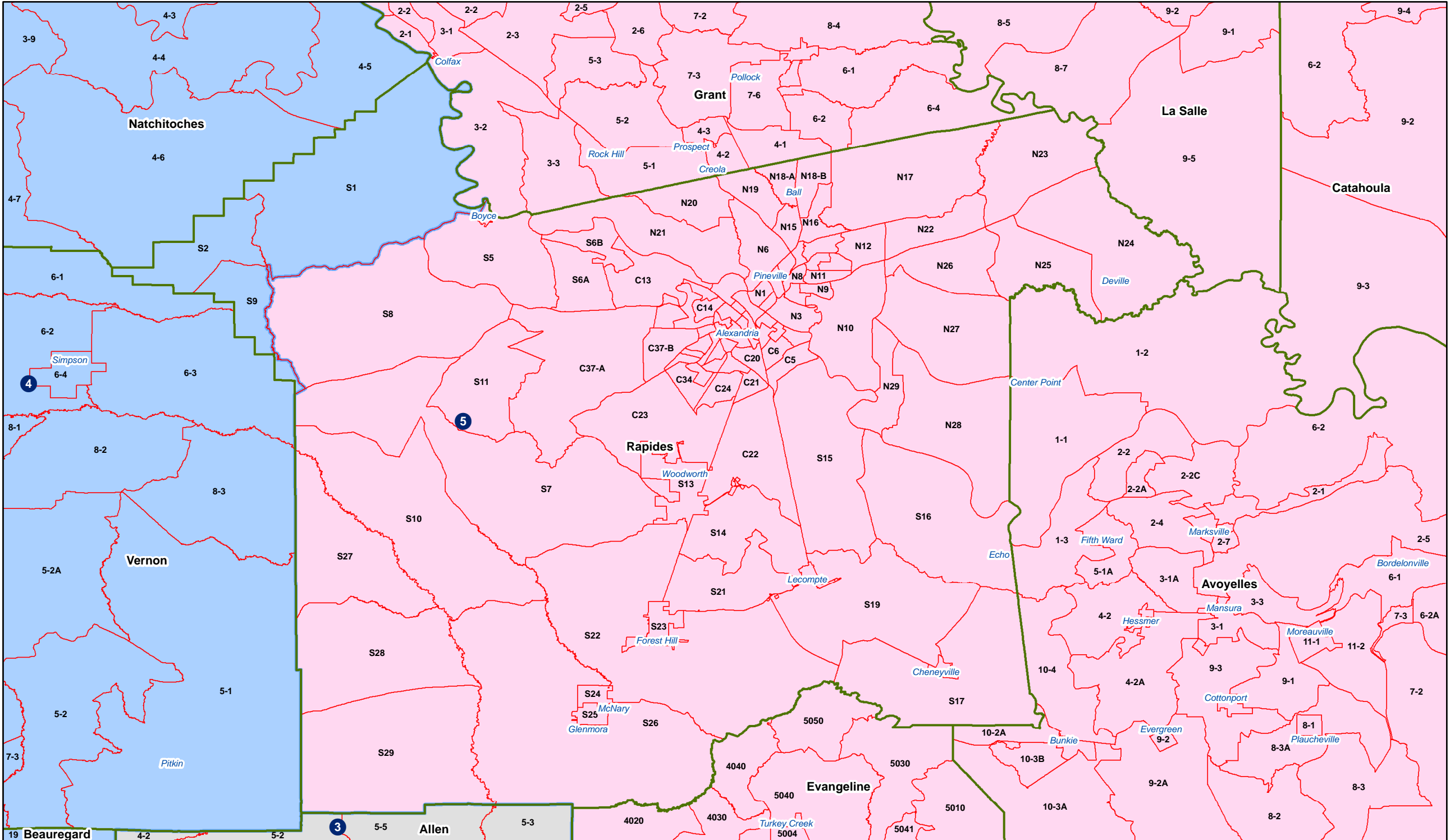
Congress - Jefferson-Orleans



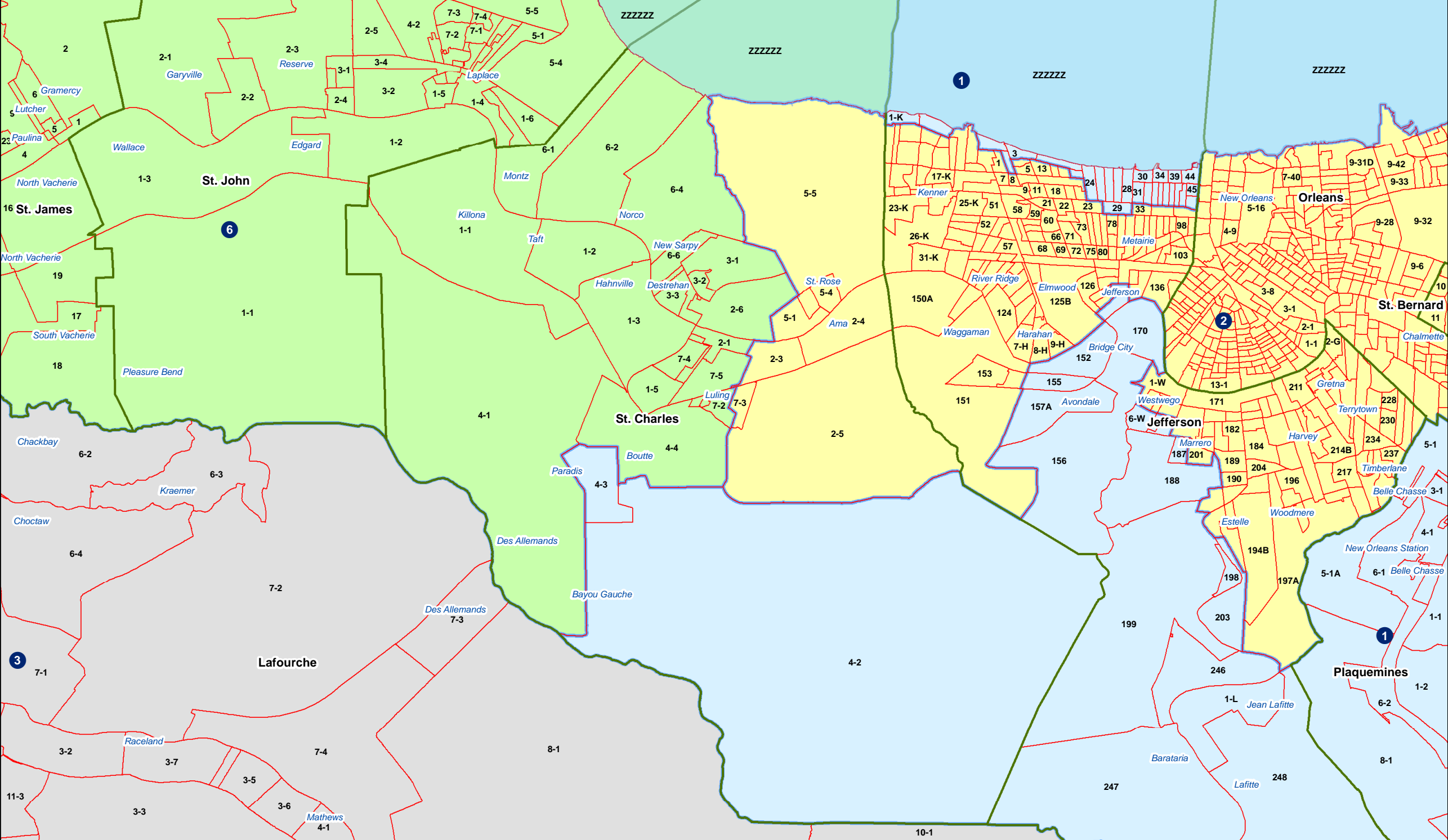
Congress - Calcasieu



Congress - Rapides



Congress - St. Charles



Congress - EBR-West Feliciana

