

2026 Regular Session

SENATE BILL NO. 121

BY SENATOR MORRIS

CONGRESS. Provides for the redistricting of Louisiana congressional districts. (See Act)

1 AN ACT

2 To enact R.S. 18:1276 and to repeal R.S. 18:1276.1, relative to congressional districts; to
3 provide for the redistricting of Louisiana's congressional districts; to provide with
4 respect to positions and offices, other than congressional, which are based upon
5 congressional districts; to provide for effectiveness; and to provide for related
6 matters.

7 Be it enacted by the Legislature of Louisiana:

8 Section 1. R.S. 18:1276 is hereby enacted to read as follows:

9 **§1276. Congressional districts**

10 **Louisiana shall be divided into six congressional districts, and the**
11 **qualified electors of each district shall elect one representative to the United**
12 **States House of Representatives. The districts shall be composed as follows:**

13 **(1) District 1 is composed of Precincts 1, 2, 3, 4, 5, 7, 8, 9, 10, 11, 12, 13,**
14 **14, 15, 16, 17, 18, 19, 20, 21, 22, 23, 24, 25, 26, 27, 28, 29, 30, 31, 32, 33, 34, 35, 36,**
15 **37, 38, 39, 40, 41, 42, 43, 44, 45, 46, 51, 52, 53, 54, 55, 56, 57, 58, 59, 60, 61, 62, 63,**
16 **64, 65, 66, 68, 69, 70, 71, 72, 73, 74, 75, 76, 77, 78, 79, 80, 81, 82, 83, 84, 85, 86, 87,**
17 **88, 89, 90, 91, 92, 93, 94, 95, 96, 97, 98, 99, 100, 101, 102, 103, 105, 106, 116, 117,**

1 118, 119, 120, 121, 122, 123, 124, 125A, 125B, 126, 127, 128, 129, 130, 132, 134,
 2 136, 138, 192, 198, 199, 203, 246, 247, 248, 1-GI, 1-H, 2-H, 3-H, 4-H, 6-H, 7-H,
 3 8-H, 9-H, 1-K, 2-K, 3-K, 4-K, 5-K, 6-KA, 6-KB, 7-KA, 7-KB, 8-K, 9-K, 10-K,
 4 11-K, 12-K, 13-KA, 14-K, 16-K, 17-K, 19-K, 20-K, 25-K, 27-K, 28-K, 29-K,
 5 34-K, 35-K and 1-L of Jefferson Parish; Precincts 3-5, 3-6, 4-1, 4-2, 4-3, 4-4, 4-5,
 6 4-6, 7-2, 7-3, 7-4, 8-1, 9-1, 9-2, 10-1, 10-2, 10-3, 10-4, 10-6, 10-8, 10-9, 10-10,
 7 10-11, 10-12, 10-13, 10-14, 10-15, 10-16, 11-1 and 11-2 of Lafourche Parish;
 8 Precincts 3-20, 4-7, 4-8, 4-9, 4-11, 4-14, 4-15, 4-17, 4-17A, 4-18, 4-20, 4-21, 4-22,
 9 4-23, 5-12, 5-13, 5-15, 5-16, 5-17, 5-18, 7-41, 7-42, 14-2, 14-3, 14-4, 14-8, 14-9,
 10 14-10, 14-11, 14-12, 14-13A, 14-14, 14-15, 14-16, 14-18A, 14-19, 14-21, 16-1,
 11 16-1A, 16-2, 16-3, 17-1, 17-17, 17-18, 17-18A, 17-19 and 17-20 of Orleans Parish;
 12 Plaquemines Parish; St. Bernard Parish; St. Tammany Parish; Precincts 70,
 13 70A, 71, 72, 72A, 73, 74, 122A, 122B, 122C, 124, 137, 137A, 137C, 137D, 145,
 14 147, 149, 149A and 151 of Tangipahoa Parish and Precincts 18, 19, 20, 23, 25,
 15 27, 29, 31, 34, 35, 38, 41, 43, 45, 48, 49, 52, 53, 55, 56, 57, 59, 60, 62, 63, 69, 71, 72,
 16 81, 83, 85, 88, 90, 94, 95, 100 and 110 of Terrebonne Parish.

17 (2) District 2 is composed of Precincts 45, 47, 48, 50, 51, 52, 53, 54, 55 and
 18 57 of Ascension Parish; Precincts 1-1, 1-2, 2-5, 4-3, 5-5, 6-1, 6-2, 6-3 and 7-1 of
 19 Assumption Parish; Precincts 1-1, 1-2, 1-3, 1-4, 1-5, 1-6, 1-10, 1-11, 1-13, 1-14,
 20 1-15, 1-16, 1-18, 1-19, 1-21, 1-22, 1-23, 1-24, 1-25, 1-26, 1-27, 1-28, 1-29, 1-30,
 21 1-31, 1-32, 1-33, 1-36, 1-38, 1-41, 1-43, 1-44, 1-45, 1-50, 1-51, 1-56, 1-58, 1-61,
 22 1-62, 1-63, 1-67, 1-69, 1-77, 1-84, 1-85, 1-86, 1-91, 1-92, 1-93, 1-94, 1-95, 1-100,
 23 1-101, 1-104, 1-106, 2-1, 2-11, 2-16, 2-22, 2-23, 2-24 and 2-30 of East Baton
 24 Rouge Parish; Precincts 1, 3, 7, 9, 10, 10B, 11, 12, 13, 14, 14A, 15, 16, 17, 18, 19,
 25 20, 21 and 22 of Iberville Parish; Precincts 104, 108, 115, 131, 133, 150A, 150B,
 26 151, 152, 153, 154, 155, 156, 157A, 170, 171, 172, 173, 174, 175, 176, 177, 178,
 27 179A, 179B, 180, 181, 182, 183, 184, 185A, 185B, 187, 188, 189, 190, 191, 193A,
 28 193B, 194A, 194B, 195, 196, 197A, 197B, 200, 201, 202, 204, 205, 210, 211, 212,
 29 213A, 213B, 213C, 214A, 214B, 215, 216A, 216B, 217, 225, 226, 227, 228, 229,

1 230, 231, 232A, 232B, 234, 235, 236, 237, 238A, 238B, 1-G, 2-G, 3-G, 4-G, 5-G,
 2 6-G, 7-G, 8-G, 9-G, 10-G, 11-G, 12-G, 13-G, 13-KB, 15-K, 21-K, 22-K, 23-K,
 3 24-K, 26-K, 30-K, 31-K, 33-K, 1-W, 3-W, 4-W, 5-W, 6-W and 7-W of Jefferson
 4 Parish; Precincts 1-1, 1-2, 1-5, 1-6, 2-1, 2-2, 2-4, 2-6, 2-7, 3-1, 3-8, 3-9, 3-12, 3-14,
 5 3-15, 3-18, 3-19, 4-2, 4-3, 4-6, 5-1, 5-2, 5-3, 5-5, 5-7, 5-8, 5-9, 5-10, 5-11, 6-1, 6-2,
 6 6-4, 6-6, 6-7, 6-8, 6-9, 7-1, 7-2, 7-4, 7-5, 7-6, 7-7, 7-8, 7-9A, 7-10, 7-11, 7-12, 7-13,
 7 7-14, 7-15, 7-16, 7-17, 7-18, 7-19, 7-20, 7-21, 7-23, 7-24, 7-25, 7-25A, 7-26, 7-27,
 8 7-27B, 7-28, 7-28A, 7-29, 7-30, 7-32, 7-33, 7-35, 7-37, 7-37A, 7-40, 8-1, 8-2, 8-4,
 9 8-6, 8-7, 8-8, 8-9, 8-12, 8-13, 8-14, 8-15, 8-19, 8-20, 8-21, 8-22, 8-23, 8-24, 8-25,
 10 8-26, 8-27, 8-28, 8-30, 9-1, 9-3, 9-4, 9-5, 9-6, 9-7, 9-8, 9-9, 9-10, 9-11, 9-12, 9-13,
 11 9-14, 9-15, 9-16, 9-17, 9-19, 9-21, 9-23, 9-25, 9-26, 9-28, 9-28C, 9-29, 9-30, 9-30A,
 12 9-31, 9-31A, 9-31B, 9-31D, 9-32, 9-33, 9-34A, 9-35, 9-35A, 9-36, 9-36B, 9-37,
 13 9-38, 9-38A, 9-39, 9-39B, 9-40, 9-40A, 9-40C, 9-41, 9-41A, 9-41B, 9-41C, 9-41D,
 14 9-42, 9-42C, 9-43A, 9-43B, 9-43C, 9-43E, 9-43F, 9-43G, 9-43H, 9-43I, 9-43J,
 15 9-43K, 9-43L, 9-43M, 9-43N, 9-44, 9-44A, 9-44B, 9-44D, 9-44E, 9-44F, 9-44G,
 16 9-44I, 9-44J, 9-44L, 9-44M, 9-44N, 9-44O, 9-44P, 9-44Q, 9-45, 9-45A, 10-3, 10-6,
 17 10-7, 10-8, 10-9, 10-11, 10-12, 10-13, 10-14, 11-2, 11-3, 11-4, 11-5, 11-8, 11-9,
 18 11-10, 11-11, 11-12, 11-13, 11-14, 11-17, 12-1, 12-2, 12-3, 12-4, 12-5, 12-6, 12-7,
 19 12-9, 12-10, 12-11, 12-12, 12-13, 12-14, 12-16, 12-17, 12-19, 13-1, 13-2, 13-3, 13-4,
 20 13-5, 13-6, 13-7, 13-8, 13-9, 13-10, 13-11, 13-12, 13-13, 13-14, 13-15, 13-16, 14-1,
 21 14-5, 14-6, 14-7, 14-17, 14-20, 14-23, 14-24A, 14-25, 14-26, 15-1, 15-2, 15-3, 15-5,
 22 15-6, 15-8, 15-9, 15-10, 15-11, 15-12, 15-12A, 15-13, 15-13A, 15-13B, 15-14,
 23 15-14A, 15-14B, 15-14C, 15-14D, 15-14E, 15-14F, 15-14G, 15-15, 15-15A,
 24 15-15B, 15-16, 15-17, 15-17A, 15-17B, 15-18, 15-18A, 15-18B, 15-18C, 15-18D,
 25 15-18E, 15-18F, 15-19, 15-19A, 15-19B, 15-19C, 16-4, 16-5, 16-6, 16-7, 16-8, 16-9,
 26 17-2, 17-3, 17-4, 17-5, 17-6, 17-7, 17-8, 17-9, 17-10, 17-11, 17-12, 17-13, 17-13A,
 27 17-14, 17-15 and 17-16 of Orleans Parish; Precincts 1-1, 1-2, 1-3, 1-4, 1-5, 2-1,
 28 2-3, 2-4, 2-5, 4-1, 4-2, 4-3, 4-4, 4-5, 5-1, 5-3, 5-4, 6-3, 6-6, 7-1, 7-2, 7-3, 7-4 and 7-5
 29 of St. Charles Parish; St. James Parish; Precincts 1-1, 1-2, 1-3, 1-4, 1-5, 2-1, 2-2,

1 2-3, 2-4, 2-5, 3-1, 3-2, 3-3, 3-4, 3-7, 4-1, 4-2, 4-3, 5-1, 5-2, 5-3, 6-1, 6-2, 6-3, 6-4,
 2 7-1 and 7-4 of St. John the Baptist Parish and Precincts 1B, 1C, 1D, 1E, 6, 8, 10,
 3 13A and 14A of West Baton Rouge Parish.

4 (3) District 3 is composed of Acadia Parish; Precincts 164, 166E, 167,
 5 260, 261, 262, 300, 301, 302, 303, 304, 305, 306, 307, 308, 309E, 309W, 310, 311,
 6 312, 313E, 313W, 314, 315E, 315W, 316E, 316W, 317, 318, 319N, 319S, 320E,
 7 320W, 321, 322, 323, 324, 325, 326, 327, 328, 329, 330, 331, 332N, 332S, 333, 334,
 8 335, 336, 337, 338, 339, 340, 360, 361, 362, 364, 365, 366, 367, 368, 369, 370,
 9 371N, 371S, 372, 405, 441, 800, 801, 860N, 860S, 861E and 861W of Calcasieu
 10 Parish; Cameron Parish; Iberia Parish; Jefferson Davis Parish; Lafayette
 11 Parish; Precincts 10A, 11, 11B, 12, 18, 18A, 19, 19A, 22, 22B, 24, 24B, 25, 26,
 12 26A, 32, 32A, 44, 44A, 44B, 45, 46, 47, 48, 49, 50, 50A, 51, 51A and 52 of St.
 13 Landry Parish; St. Martin Parish; St. Mary Parish; Precincts 1, 2, 5, 7, 8, 10, 11,
 14 12, 14, 15, 16, 17, 28, 33, 37, 39, 42, 51, 64, 67, 68, 73, 76, 84 and 87 of
 15 Terrebonne Parish and Vermilion Parish.

16 (4) District 4 is composed of Allen Parish; Beauregard Parish; Bienville
 17 Parish; Bossier Parish; Caddo Parish; Precincts 160E, 160W, 161, 162E, 162W,
 18 163, 165, 166W, 363, 400, 401, 402, 403, 404, 406, 407, 408, 440, 460E, 460W,
 19 461, 463, 464, 465, 466E, 466W, 467, 468, 469, 560, 561, 562, 600, 601, 602, 603,
 20 660, 661, 662, 663, 664, 700, 701, 702, 703, 760, 761 and 762 of Calcasieu Parish;
 21 Claiborne Parish; De Soto Parish; Evangeline Parish; Precincts 1-1, 1-2, 1-3,
 22 1-4, 2-1, 2-2, 2-6, 3-1, 3-2, 3-3, 5-1, 5-2 and 5-3 of Grant Parish; Natchitoches
 23 Parish; Red River Parish; Sabine Parish; Union Parish; Vernon Parish and
 24 Webster Parish.

25 (5) District 5 is composed of Avoyelles Parish; Caldwell Parish;
 26 Catahoula Parish; Concordia Parish; East Carroll Parish; East Feliciana
 27 Parish; Franklin Parish; Precincts 2-3, 2-5, 4-1, 4-2, 4-3, 6-1, 6-2, 6-3, 6-4, 7-1,
 28 7-2, 7-3, 7-5, 7-6, 8-1, 8-2, 8-3 and 8-4 of Grant Parish; Jackson Parish; La Salle
 29 Parish; Lincoln Parish; Madison Parish; Morehouse Parish; Ouachita Parish;

1 Rapides Parish; Richland Parish; St. Helena Parish; Precincts 1, 1A, 1B, 1C,
 2 1D, 2, 2A, 2B, 2C, 3, 4, 4A, 4B, 5, 6, 7A, 8, 9, 9A, 10, 13, 13A, 14A, 14B, 15, 18B,
 3 20, 20B, 21, 21A and 23A of St. Landry Parish; Precincts 2, 6, 11, 15, 16, 17, 28,
 4 33, 40A, 41, 42, 43, 44, 45A, 45B, 46, 47, 49, 101, 102, 104, 106, 106A, 107, 108,
 5 109, 110, 111A, 112, 114, 115B, 116, 117, 118, 118A, 119, 120, 120A, 120B, 121,
 6 121A, 123, 125, 127, 129A, 133, 133A, 137B, 139, 141, 141A, 143 and 143A of
 7 Tangipahoa Parish; Tensas Parish; Washington Parish; West Carroll Parish;
 8 West Feliciana Parish and Winn Parish.

9 (6) District 6 is composed of Precincts 1, 2, 3, 4, 5, 6, 7, 8, 9, 10, 11, 12, 13,
 10 14, 15, 16, 17, 18, 19, 20, 21, 22, 23, 24, 25, 26, 27, 28, 30, 31, 32, 33, 34, 35, 36, 37,
 11 38, 39, 40, 41, 42, 43, 44, 58, 61, 62, 63, 64, 65, 66, 68, 69, 71, 72, 73, 76, 77 and
 12 78 of Ascension Parish; Precincts 1-3, 2-1, 2-3, 2-4, 3-1, 3-2, 4-1, 4-4, 5-1, 5-2,
 13 5-3, 7-2, 7-3, 8-1 and 9-1 of Assumption Parish; Precincts 1-7, 1-8, 1-9, 1-12,
 14 1-20, 1-34, 1-35, 1-37, 1-39, 1-40, 1-42, 1-46, 1-47, 1-48, 1-49, 1-52, 1-53, 1-54,
 15 1-55, 1-57, 1-59, 1-60, 1-64, 1-65, 1-66, 1-70, 1-71, 1-72, 1-73, 1-74, 1-75, 1-76,
 16 1-78, 1-79, 1-80, 1-81, 1-82, 1-83, 1-87, 1-88, 1-89, 1-90, 1-96, 1-97, 1-98, 1-99,
 17 1-102, 1-103, 1-105, 1-107, 2-2, 2-3, 2-4, 2-5, 2-6, 2-7, 2-8, 2-9, 2-10, 2-12, 2-13,
 18 2-14, 2-15, 2-17, 2-18, 2-19, 2-20, 2-21, 2-25, 2-26, 2-27, 2-28, 2-29, 2-31, 2-32,
 19 2-33, 2-34, 2-35, 2-36, 2-37, 2-38, 3-1, 3-2, 3-3, 3-4, 3-5, 3-6, 3-7, 3-8, 3-9, 3-10,
 20 3-11, 3-12, 3-13, 3-14, 3-15, 3-16, 3-17, 3-18, 3-19, 3-20, 3-21, 3-22, 3-23, 3-24,
 21 3-25, 3-26, 3-27, 3-28, 3-29, 3-30, 3-31, 3-32, 3-33, 3-34, 3-35, 3-36, 3-37, 3-38,
 22 3-39, 3-40, 3-41, 3-42, 3-43, 3-44, 3-45, 3-46, 3-47, 3-48, 3-49, 3-50, 3-51, 3-52,
 23 3-53, 3-54, 3-55, 3-56, 3-57, 3-58, 3-59, 3-60, 3-61, 3-62, 3-63, 3-64, 3-65, 3-66,
 24 3-67, 3-68, 3-69, 3-70, 3-71, 3-72, 3-73, 3-74, 3-75 and 3-76 of East Baton Rouge
 25 Parish; Precincts 4, 5, 6, 15A, 24, 25, 26, 27, 28, 29, 31 and 32 of Iberville Parish;
 26 Precincts 1-1, 1-2, 1-3, 1-4, 1-5, 1-6, 2-1, 2-1A, 2-2, 2-3, 2-5, 2-6, 2-7, 2-8, 2-9,
 27 2-10, 2-11, 2-12, 2-13, 2-14, 2-15, 2-16, 3-1, 3-2, 3-3, 3-4, 3-7, 5-1, 5-1A, 5-2, 5-3,
 28 6-1, 6-2, 6-3, 6-4, 6-5, 7-1, 11-3, 11-4 and 11-5 of Lafourche Parish; Livingston
 29 Parish; Pointe Coupee Parish; Precincts 1-6, 2-6, 3-1, 3-2, 3-3, 5-5, 6-1, 6-2 and

1 6-4 of St. Charles Parish; Precincts 1-6, 1-7, 4-4, 4-5, 5-4, 5-5, 6-5, 7-2 and 7-3
2 of St. John the Baptist Parish; Precincts 7, 14, 16, 16A, 17, 23, 27, 28, 29, 29A,
3 30, 30A, 30B, 31, 33, 33A, 34, 34A, 35, 36, 37, 37A, 38, 39, 39A, 40, 41, 41A, 42
4 and 43 of St. Landry Parish and Precincts 1A, 2A, 2B, 3, 4A, 4B, 5, 7A, 7B, 9,
5 13B, 14B, 15, 16, 17, 18, 19, 20, 21 and 22 of West Baton Rouge Parish.

6 Section 2. R.S. 18:1276.1 is hereby repealed.

7 Section 3.(A) The precincts referenced in this Act are those contained in the file
8 named "2026 Precinct Shapefiles (1-27-2026)" available on the website of the Legislature
9 of Louisiana on the effective date of this Section. The 2026 Precinct Shapefiles are based
10 upon those Voting Districts (VTDs) contained in the 2020 Census Redistricting TIGER/Line
11 Shapefiles for the State of Louisiana as those files have been modified and validated through
12 the data verification program of the Louisiana Senate and the Louisiana House of
13 Representatives to represent precinct changes submitted through January 27, 2026, to the
14 Legislature of Louisiana by parish governing authorities pursuant to the provisions of R.S.
15 18:532 and 532.1.

16 (B) When a precinct referenced in this Act has been subdivided by action of the
17 parish governing authority on a nongeographic basis or subdivided by action of the parish
18 governing authority on a geographic basis in accordance with the provisions of R.S.
19 18:532.1, the enumeration in this Act of the general precinct designation shall include all
20 nongeographic and all geographic subdivisions thereof, however such subdivisions may be
21 designated.

22 (C) The territorial limits of the districts as provided in this Act shall continue in
23 effect until changed by law regardless of any subsequent change made to the precincts by
24 the parish governing authority.

25 Section 4. The provisions of this Act shall not reduce the term of office of any person
26 holding any position or office on the effective date of this Section for which the appointment
27 or election is based upon a congressional district as composed pursuant to R.S. 18:1276.1.
28 Any position or office that is filled by appointment or election based upon a congressional
29 district and that is to be filled after January 3, 2027, shall be appointed or elected from a

1 district as it is described in Section 1 of this Act.

2 Section 5.(A) Solely for the purposes of qualifying for election and the conduct of
3 the election of representatives to the United States Congress at the regularly scheduled
4 election for representatives to the congress in 2026, the provisions of Section 1 of this Act
5 shall become effective upon signature of this Act by the governor or, if not signed by the
6 governor, upon expiration of the time for bills to become law without signature by the
7 governor, as provided in Article III, Section 18 of the Constitution of Louisiana. If this Act
8 is vetoed by the governor and subsequently approved by the legislature, the provisions of
9 Section 1 of this Act shall become effective on the day following such approval for the
10 purposes established in this Subsection.

11 (B) For subsequent elections of representatives to the United States Congress and for
12 all other purposes, the provisions of Section 1 of this Act shall become effective at noon on
13 January 3, 2027.

14 (C) The provisions of Section 2 of this Act shall become effective at noon on January
15 3, 2027.

16 (D) The provisions of this Section and Sections 3 and 4 of this Act shall become
17 effective upon signature of this Act by the governor or, if not signed by the governor, upon
18 expiration of the time for bills to become law without signature by the governor, as provided
19 in Article III, Section 18 of the Constitution of Louisiana. If this Act is vetoed by the
20 governor and subsequently approved by the legislature, the provisions of this Section and
21 Sections 3 and 4 of this Act shall become effective on the day following such approval.

The original instrument and the following digest, which constitutes no part of the legislative instrument, were prepared by Senate Legislative Services. The keyword, summary, and digest do not constitute part of the law or proof or indicia of legislative intent. [R.S. 1:13(B) and 24:177(E)]

DIGEST

SB 121 Reengrossed

2026 Regular Session

Morris

Present U.S. Constitution (14th Amendment) provides that representatives in congress shall be apportioned among the several states according to their respective numbers, counting the whole number of persons in each state. The U.S. Supreme Court has held that the population of congressional districts in the same state must be as nearly equal in population as practicable.

Present law provides for six congressional districts based upon the 2020 federal decennial

census.

Proposed law updates precincts for the current Act 2 of the 2024 1st E.S. congressional districts based upon the "2026 Precinct Shapefiles (1-27-2026)".

Proposed law provides that the new districts become effective upon signature of governor or lapse of time for gubernatorial action for election purposes only for the regular congressional elections in 2026. Retains present law districts based upon the 2020 census until noon on January 3, 2027, at which time present law is repealed and the new districts based upon the 2020 census, as established by proposed law, become effective for all other purposes.

Proposed law specifies that precincts referenced in district descriptions are those precincts identified as Voting Districts (VTDs) contained in the file named "2026 Precinct Shapefiles (1-27-2026)" available on the La. Legislature's website. Specifies that the 2026 Precinct Shapefiles are based upon those Voting Districts (VTDs) contained in the 2020 Census Redistricting TIGER/Line Shapefiles for the State of Louisiana as those files have been modified and validated through the data verification program of the La. Legislature. Also specifies that if any such precinct has been subdivided by action of the parish governing authority on a nongeographic basis or subdivided by action of the parish governing authority on a geographic basis in accordance with present law, the enumeration of the general precinct designation shall include all nongeographic and all geographic subdivisions thereof. Further provides that the territorial limits of the districts as enacted shall continue in effect until changed by law regardless of any subsequent change made to the precincts by the parish governing authority.

Proposed law specifies that proposed law does not reduce the term of office of any person holding any position or office on the effective date of proposed law for which the appointment or election is based upon a congressional district as composed pursuant to present law. Specifies that any position or office filled after January 3, 2027, for which the appointment or election is based upon a congressional district shall be appointed or elected from a district as it is described in proposed law.

Population data in the summaries accompanying this digest are derived from 2020 Census Redistricting Data (Public Law 94-171), Summary File for Louisiana. Population data, statistical information, and maps are supplied for purposes of information and analysis and comprise no part of proposed law.

Effective upon signature of governor or lapse of time for gubernatorial action for election purposes only for the regular congressional elections in 2026; effective for all other purposes at noon on January 3, 2027.

(Adds R.S. 18:1276; repeals R.S. 18:1276.1)

Summary of Amendments Adopted by Senate

Committee Amendments Proposed by Senate Committee on Senate and Governmental Affairs to the original bill

1. Provided an updated congressional map with revised district boundaries and precincts.
2. Changed date in section 4 from 2029 to 2027 for the term of office of any person holding any position or office on the effective date of the law to reflect the current congressional date.
3. Changes the election date from 2028 to 2026 to reflect the current election.

4. Changes the effective date for Section 1 from January 3, 2029 to January 3, 2027.
5. Changes the effective date of Section 2 from January 3, 2029 to January 3, 2027.

Senate Floor Amendments to engrossed bill

1. Changes boundaries of districts.

Plan Statistics

Plan: Senate Bill 121 Reengrossed (Morris)

<u>Districts:</u>	<u># of Members</u>	<u>Actual Population</u>	<u>Ideal Population</u>	<u>Absolute Deviation</u>	<u>Relative Deviation</u>
District 1	1	776,252	776,292	-40	-0.005%
District 2	1	776,311	776,292	19	0.002%
District 3	1	776,278	776,292	-14	-0.002%
District 4	1	776,255	776,292	-37	-0.005%
District 5	1	776,320	776,292	28	0.004%
District 6	1	776,341	776,292	49	0.006%
Grand Total:	6	4,657,757	4,657,752		

Ideal Population Per Member:	776292		
Number of Districts for Plan Type:	6		
Range of District Populations:	776,252	to	776,341
Absolute Mean Deviation:	15		
Absolute Range:	-40	to	49
Absolute Overall Range:	89		
Relative Mean Deviation:	0.00%		
Relative Range:	-0.01%	to	0.01%
Relative Overall Range:	0.02%		

<i>Ideal - Actual:</i>	-5
<i>Remainder:</i>	5
<i>Unassigned Population:</i>	0

District Summary

Plan: Senate Bill 121 Reengrossed (Morris)

	Total Population	VAP Total	Reg Total Dec 2025	Reg Dem Total Dec 2025	Reg Rep Total Dec 2025	Reg Other Total Dec 2025
District 1	776,252	601,847	438,985	107,108	197,758	134,119
	100.000%	100.000%	72.940%	24.399%	45.049%	30.552%
District 2	776,311	602,516	411,368	250,392	55,206	105,770
	100.000%	100.000%	68.275%	60.868%	13.420%	25.712%
District 3	776,278	586,689	421,998	130,791	178,723	112,484
	100.000%	100.000%	71.929%	30.993%	42.352%	26.655%
District 4	776,255	590,566	401,803	129,073	171,707	101,023
	100.000%	100.000%	68.037%	32.123%	42.734%	25.142%
District 5	776,320	597,174	396,194	136,089	167,214	92,891
	100.000%	100.000%	66.345%	34.349%	42.205%	23.446%
District 6	776,341	591,756	439,925	137,630	183,465	118,830
	100.000%	100.000%	74.342%	31.285%	41.704%	27.011%
Grand Total	4,657,757	3,570,548	2,510,273	891,083	954,073	665,117
	100.000%	100.000%	70.305%	35.497%	38.007%	26.496%

District Parish Summary

Plan: Senate Bill 121 Reengrossed (Morris)

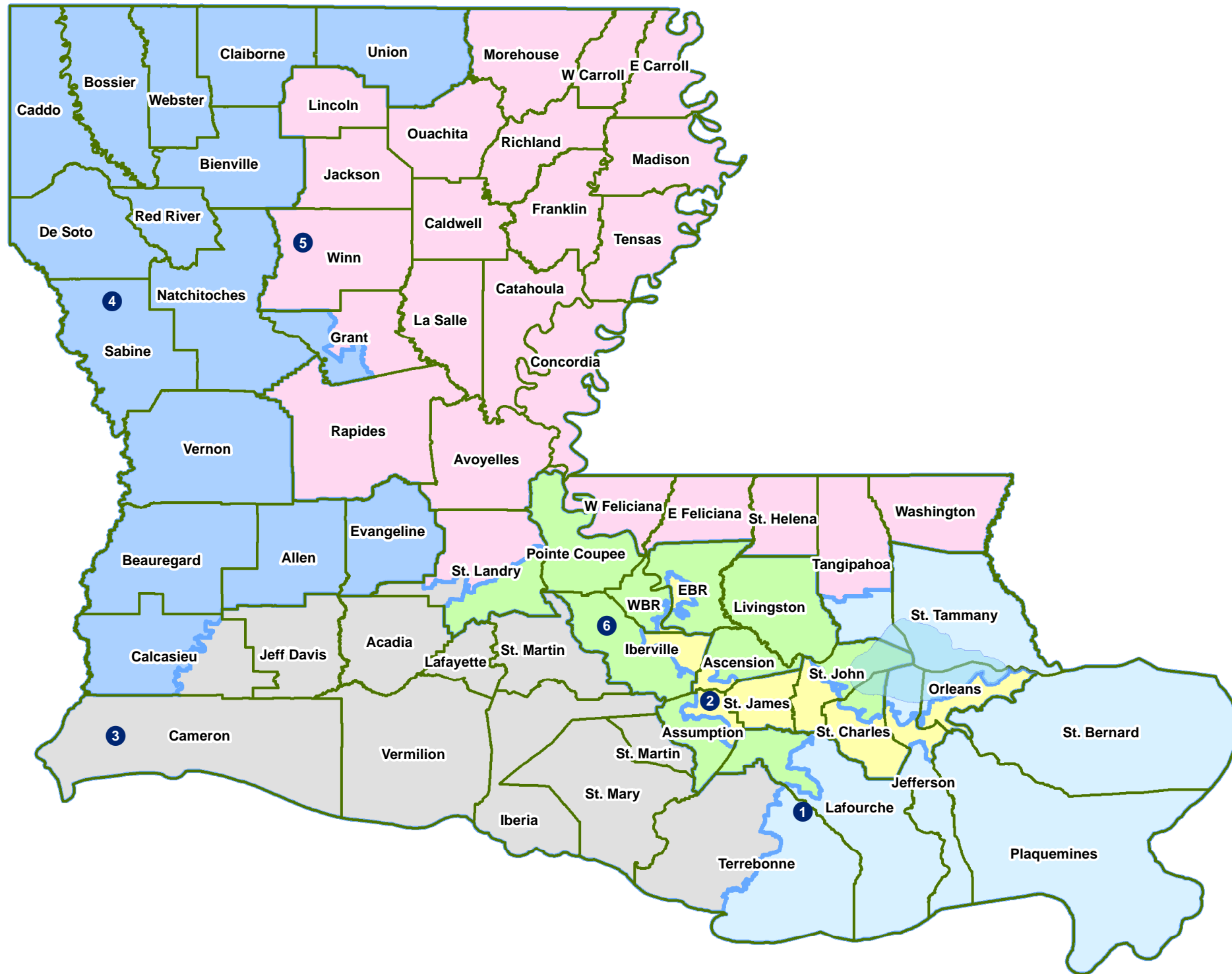
	Total Population	VAP Total	Reg Total Dec 2025	Reg Dem Total Dec 2025	Reg Rep Total Dec 2025	Reg Other Total Dec 2025
District 1						
*Jefferson	245,682	196,528	133,984	33,174	59,052	41,758
*Lafourche	44,458	33,799	22,315	5,447	10,654	6,214
*Orleans	50,038	41,407	29,329	10,958	8,637	9,734
Plaquemines	23,515	17,334	12,130	3,924	4,971	3,235
St. Bernard	43,764	31,775	22,206	7,912	6,732	7,562
St. Tammany	264,570	202,228	168,850	34,289	83,147	51,414
*Tangipahoa	39,081	29,691	21,750	4,175	11,357	6,218
*Terrebonne	65,144	49,085	28,421	7,229	13,208	7,984
District 1	776,252	601,847	438,985	107,108	197,758	134,119
	100.000%	100.000%	72.940%	24.399%	45.049%	30.552%
District 2						
*Ascension	9,737	7,283	5,100	3,426	818	856
*Assumption	6,927	5,421	4,237	2,489	1,037	711
*East Baton Rouge	112,025	86,653	50,713	34,204	4,432	12,077
*Iberville	21,489	16,969	11,853	6,811	2,593	2,449
*Jefferson	195,099	148,126	92,835	46,648	18,490	27,697
*Orleans	333,959	264,789	188,230	126,881	12,630	48,719
*St. Charles	35,062	26,383	20,904	7,411	8,017	5,476
St. James	20,192	15,505	13,459	7,633	3,537	2,289
*St. John the Baptist	32,678	24,826	19,043	12,146	2,592	4,305
*West Baton Rouge	9,143	6,561	4,994	2,743	1,060	1,191
District 2	776,311	602,516	411,368	250,392	55,206	105,770
	100.000%	100.000%	68.275%	60.868%	13.420%	25.712%
District 3						
Acadia	57,576	42,943	33,583	9,481	16,401	7,701
*Calcasieu	134,931	102,278	60,923	22,485	21,853	16,585
Cameron	5,617	4,358	3,924	844	2,118	962
Iberia	69,929	52,791	36,944	12,313	15,184	9,447
Jefferson Davis	32,250	24,039	18,329	4,957	8,478	4,894
Lafayette	241,753	183,875	138,622	38,312	60,999	39,311
*St. Landry	31,254	23,048	17,128	8,666	4,393	4,069
St. Martin	51,767	39,404	31,057	10,762	12,880	7,415
St. Mary	49,406	37,521	26,695	9,267	9,994	7,434
*Terrebonne	44,436	33,420	22,131	5,096	10,872	6,163
Vermilion	57,359	43,012	32,662	8,608	15,551	8,503
District 3	776,278	586,689	421,998	130,791	178,723	112,484
	100.000%	100.000%	71.929%	30.993%	42.352%	26.655%
District 4						
Allen	22,750	17,510	10,797	3,362	5,053	2,382
Beauregard	36,549	27,489	21,046	3,672	11,362	6,012
Bienville	12,981	10,073	7,942	3,498	2,889	1,555
Bossier	128,746	95,876	64,006	14,484	31,775	17,747
Caddo	237,848	182,407	119,564	52,437	37,457	29,670
*Calcasieu	81,854	60,888	42,419	7,905	22,542	11,972
Claiborne	14,170	11,507	7,439	2,884	2,826	1,729
De Soto	26,812	20,440	17,070	5,932	7,395	3,743
Evangeline	32,350	24,408	18,176	7,093	7,463	3,620
*Grant	8,081	6,195	4,553	1,221	2,177	1,155
Natchitoches	37,515	29,349	19,037	7,518	6,812	4,707
Red River	7,620	5,714	4,877	2,218	1,747	912
Sabine	22,155	17,064	12,460	3,010	6,599	2,851
Union	21,107	16,632	12,695	3,322	6,653	2,720
Vernon	48,750	36,261	20,095	3,985	10,497	5,613
Webster	36,967	28,753	19,627	6,532	8,460	4,635
District 4	776,255	590,566	401,803	129,073	171,707	101,023
	100.000%	100.000%	68.037%	32.123%	42.734%	25.142%
District 5						
Avoyelles	39,693	30,578	19,578	7,487	7,622	4,469
Caldwell	9,645	7,478	5,381	1,214	2,944	1,223
Catahoula	8,906	6,951	5,626	1,981	2,445	1,200
Concordia	18,687	14,217	9,841	4,059	3,753	2,029
East Carroll	7,459	5,901	3,106	1,880	682	544
East Feliciana	19,539	16,183	12,351	4,876	4,703	2,772
Franklin	19,774	15,028	11,061	3,534	5,395	2,132
*Grant	14,088	11,332	6,793	915	4,092	1,786
Jackson	15,031	11,783	8,696	2,713	4,187	1,796
La Salle	14,791	11,563	7,863	1,383	4,887	1,593
Lincoln	48,396	38,655	21,272	6,783	9,161	5,328
Madison	10,017	7,435	5,394	2,855	1,377	1,162

District Parish Summary

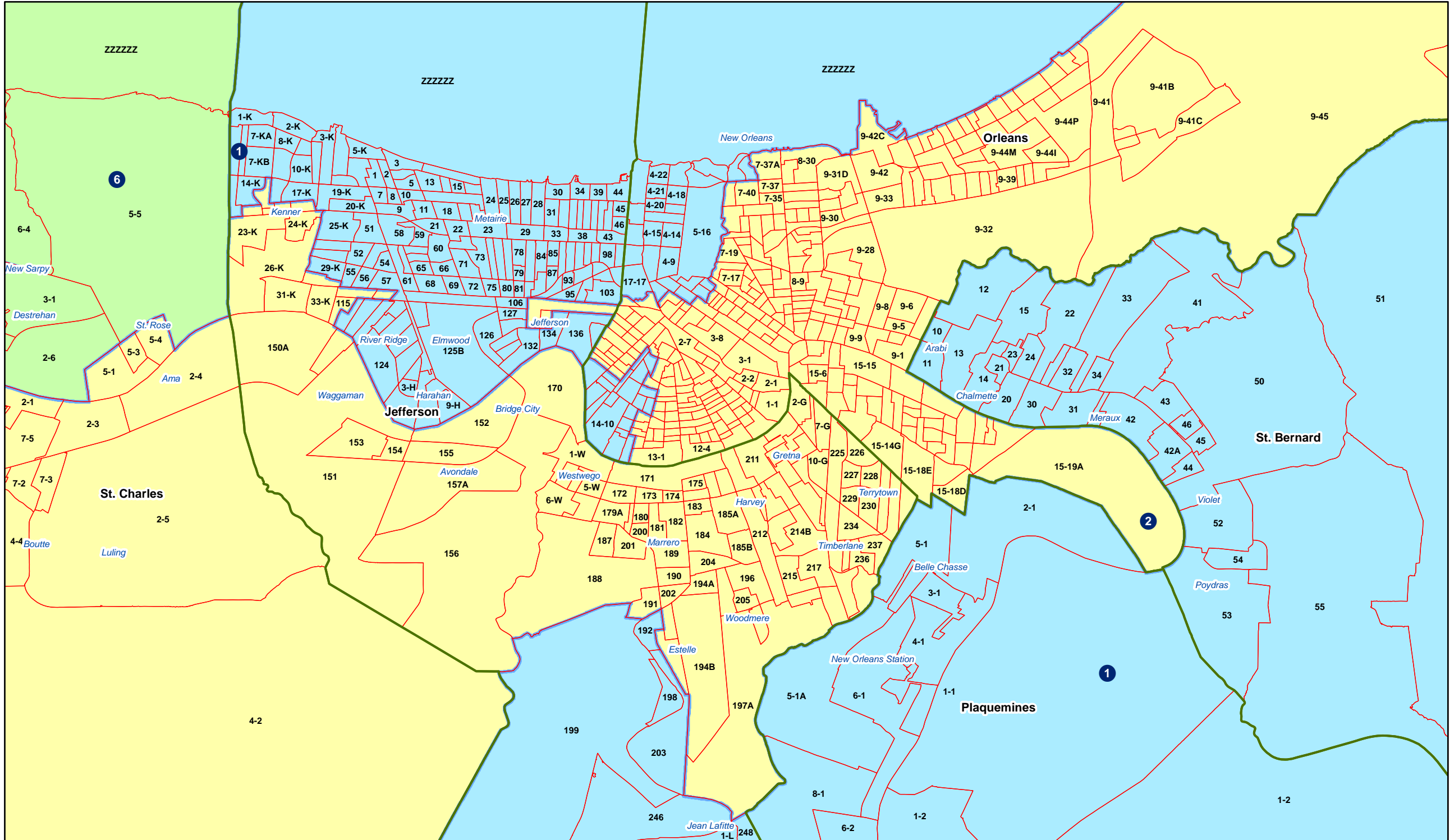
Plan: Senate Bill 121 Reengrossed (Morris)

	Total Population	VAP Total	Reg Total Dec 2025	Reg Dem Total Dec 2025	Reg Rep Total Dec 2025	Reg Other Total Dec 2025
District 5						
Morehouse	25,629	20,062	13,316	5,563	4,880	2,873
Ouachita	160,368	120,200	80,532	26,315	35,088	19,129
Rapides	130,023	98,792	66,219	20,448	28,894	16,877
Richland	20,043	15,383	11,325	3,695	5,132	2,498
St. Helena	10,920	8,463	7,499	4,179	1,984	1,336
*St. Landry	20,809	15,963	13,372	6,843	3,791	2,738
*Tangipahoa	94,076	71,800	40,191	13,724	16,152	10,315
Tensas	4,147	3,235	3,024	1,719	828	477
Washington	45,463	34,951	24,047	8,242	9,837	5,968
West Carroll	9,751	7,532	5,144	1,069	2,963	1,112
West Feliciana	15,310	12,783	7,463	2,468	3,265	1,730
Winn	13,755	10,906	7,100	2,144	3,152	1,804
District 5	776,320	597,174	396,194	136,089	167,214	92,891
	100.000%	100.000%	66.345%	34.349%	42.205%	23.446%
District 6						
*Ascension	116,763	84,674	70,009	18,761	31,386	19,862
*Assumption	14,112	11,195	7,950	3,025	3,180	1,745
*East Baton Rouge	344,756	268,959	186,535	70,059	65,864	50,612
*Iberville	8,752	7,117	5,691	2,557	1,921	1,213
*Lafourche	53,099	40,820	30,023	8,043	13,763	8,217
Livingston	142,282	105,141	80,500	13,540	44,448	22,512
Pointe Coupee	20,758	16,250	13,201	5,858	4,426	2,917
*St. Charles	17,487	13,158	10,777	2,617	5,107	3,053
*St. John the Baptist	9,799	7,677	5,656	2,419	1,689	1,548
*St. Landry	30,477	22,800	18,881	6,644	7,734	4,503
*West Baton Rouge	18,056	13,965	10,702	4,107	3,947	2,648
District 6	776,341	591,756	439,925	137,630	183,465	118,830
	100.000%	100.000%	74.342%	31.285%	41.704%	27.011%
Grand Total	4,657,757	3,570,548	2,510,273	891,083	954,073	665,117
	100.000%	100.000%	70.305%	35.497%	38.007%	26.496%

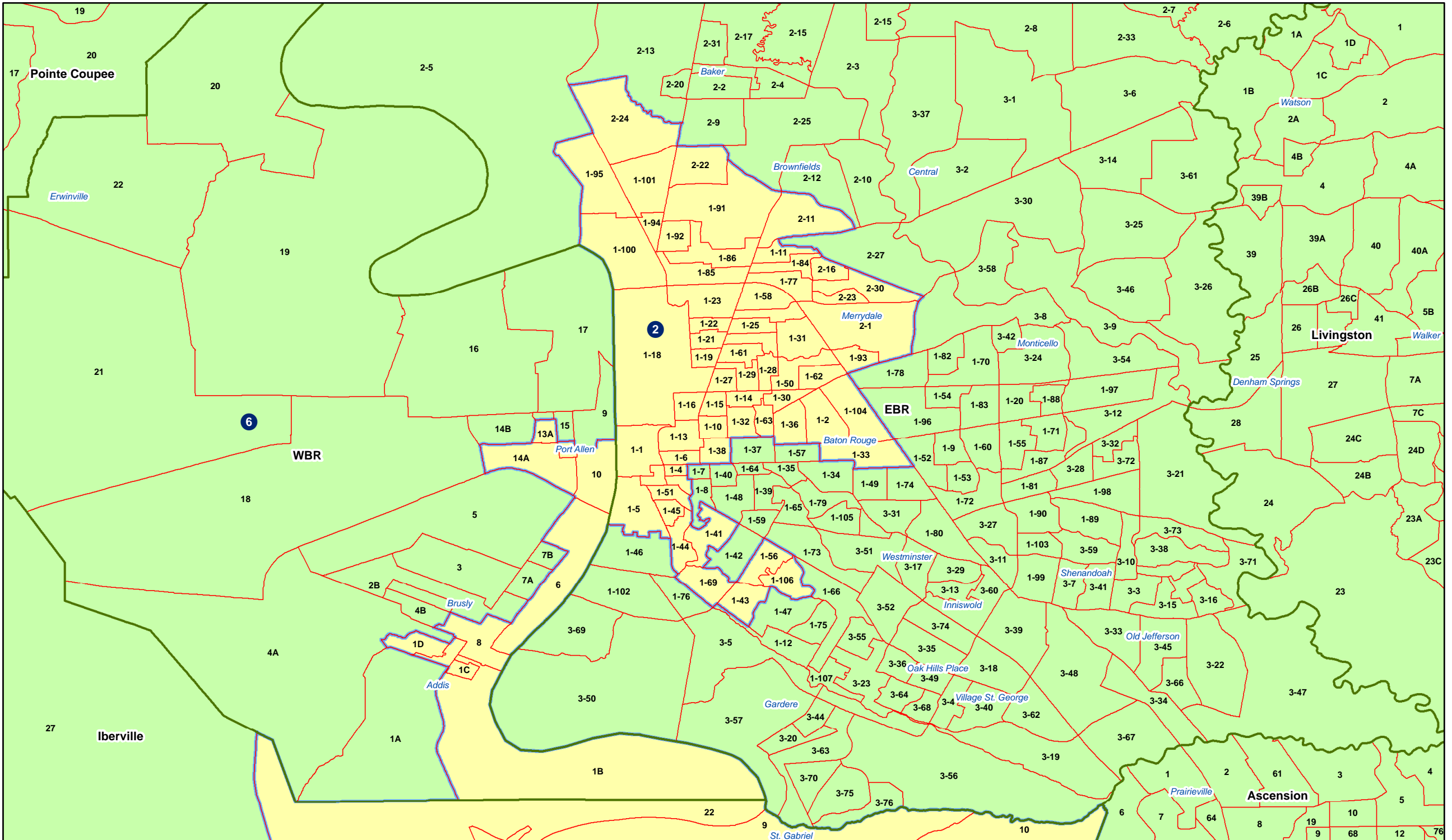
Congress - Statewide



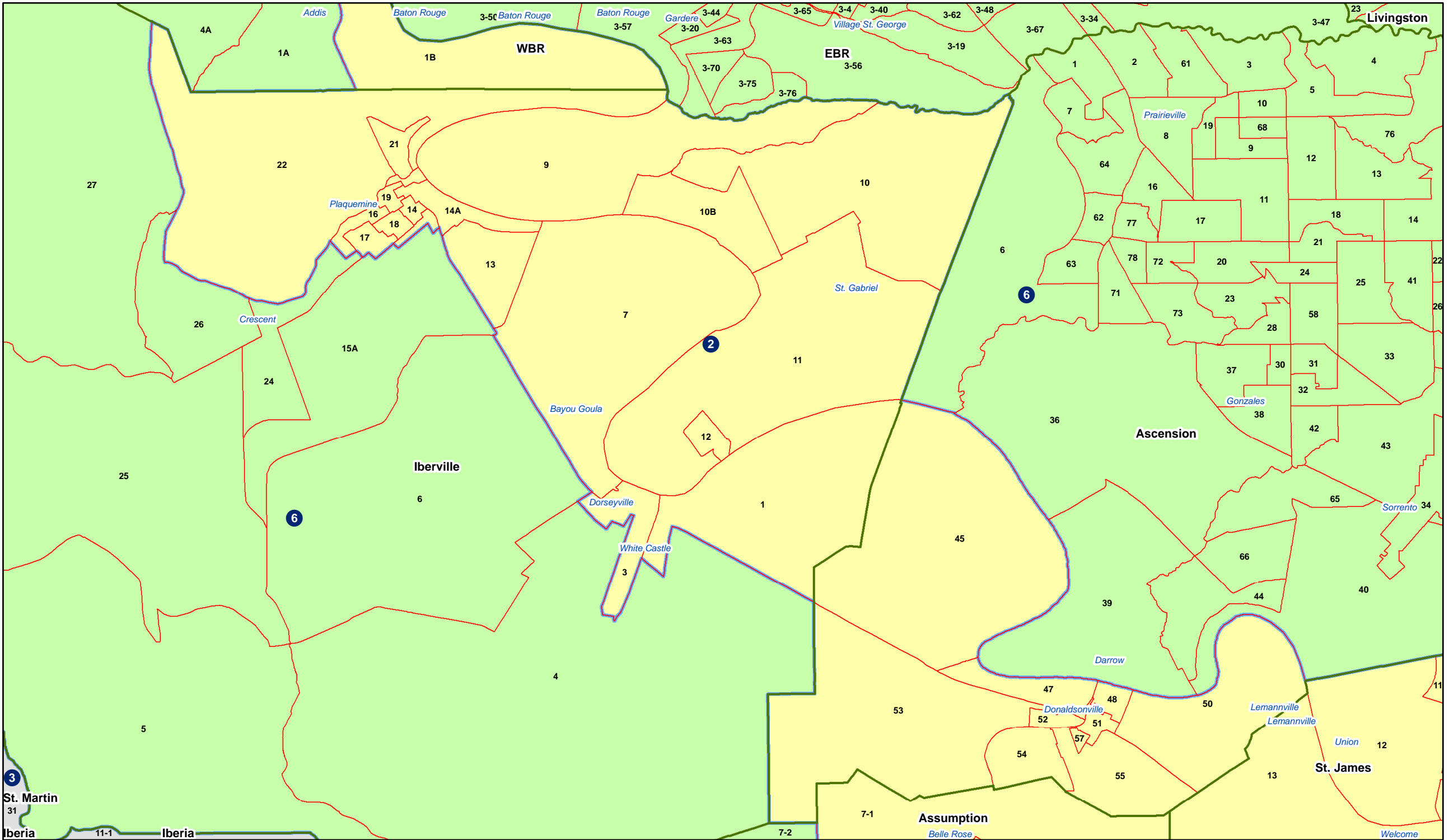
Congress - Jefferson-Orleans



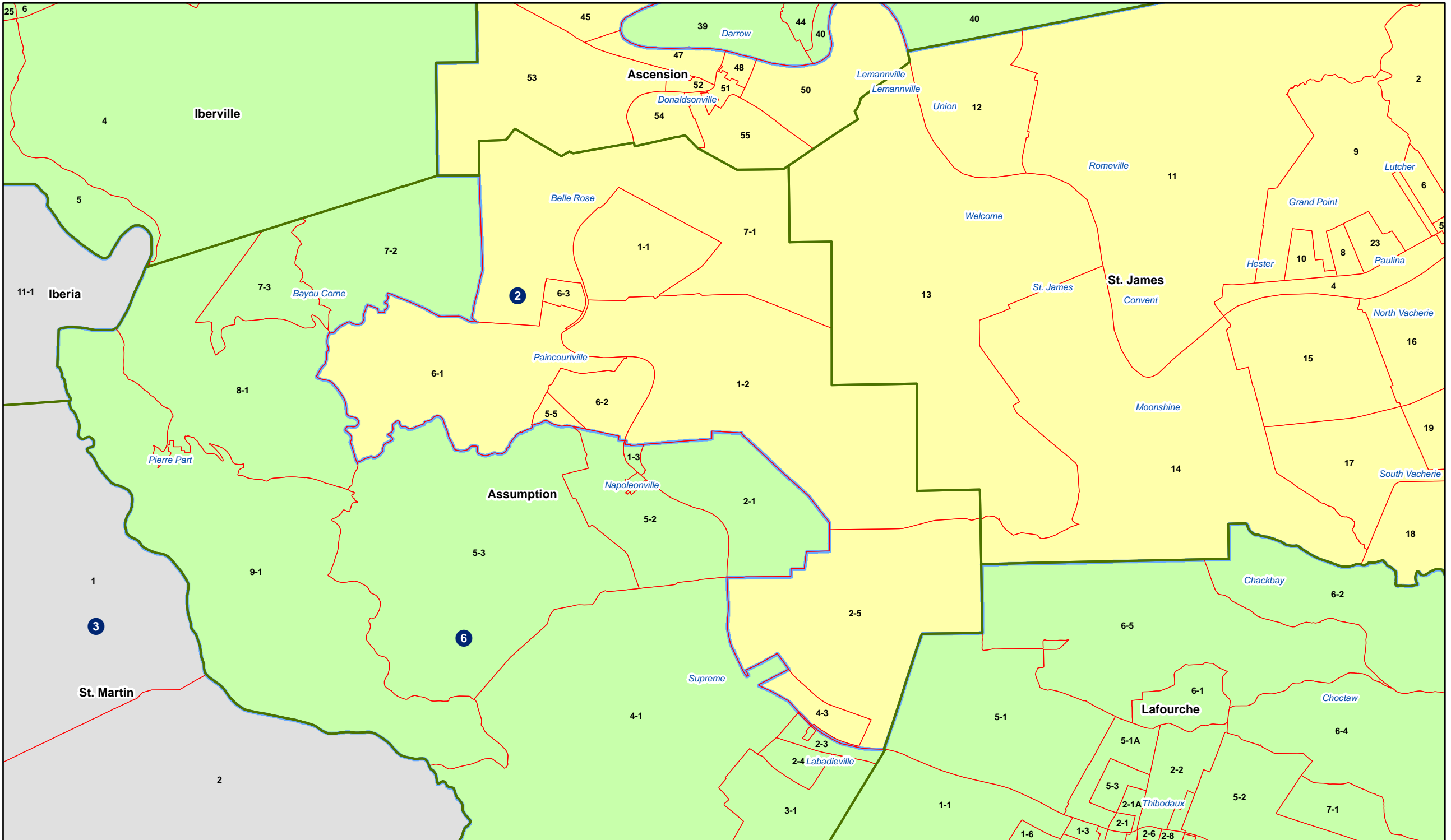
Congress - EBR-WBR



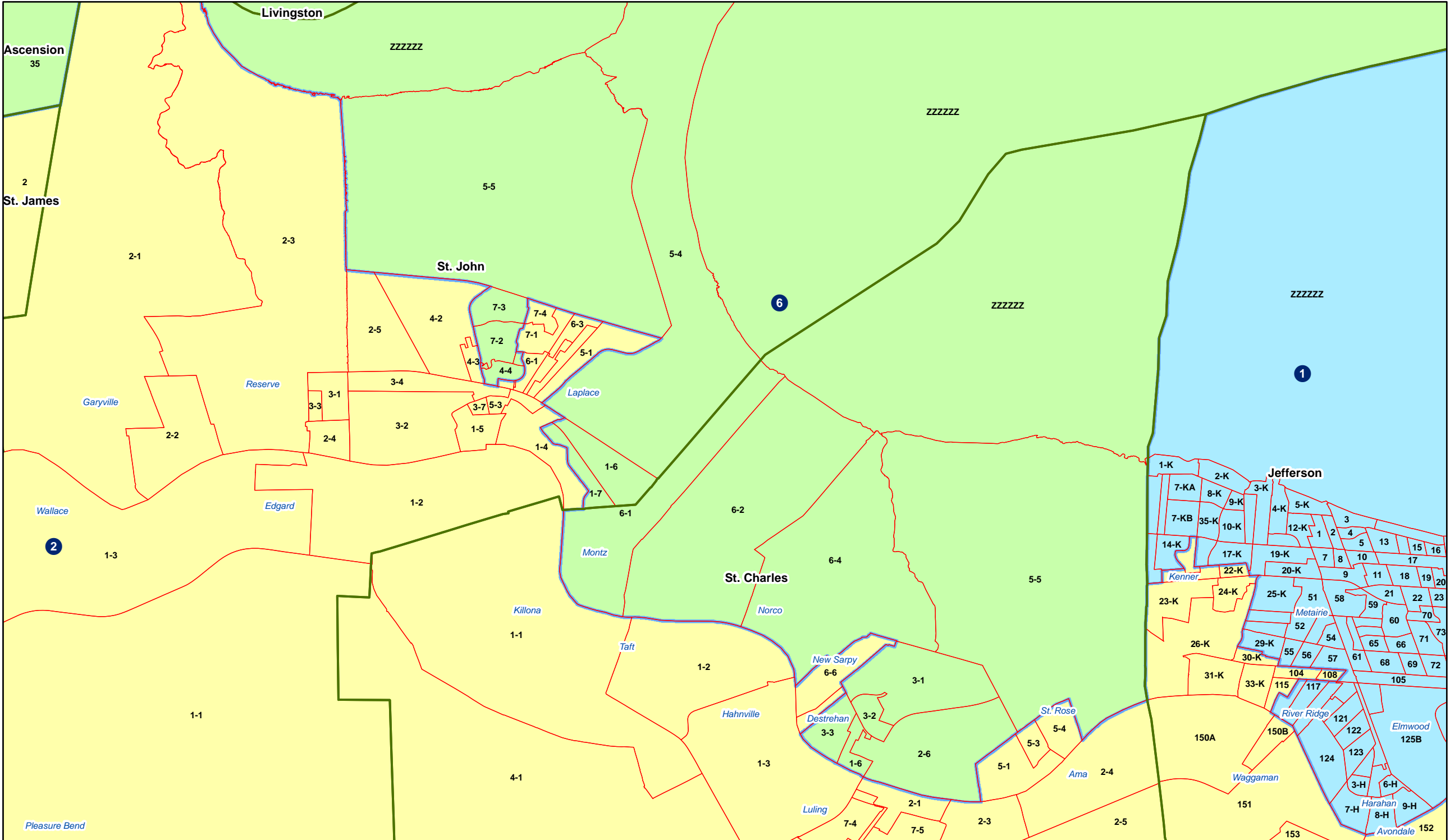
Congress - Iberville-Ascension



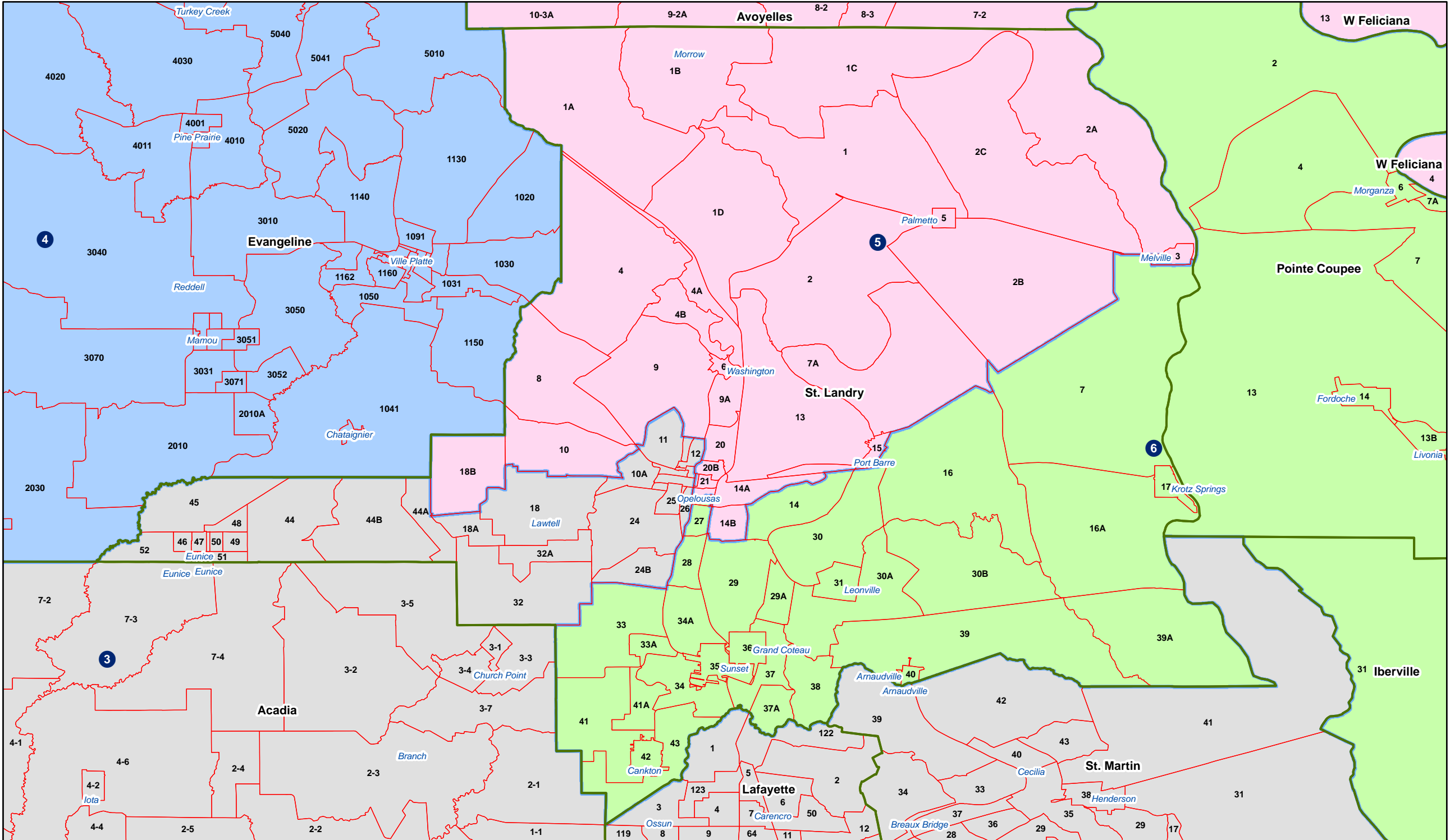
Congress - Assumption



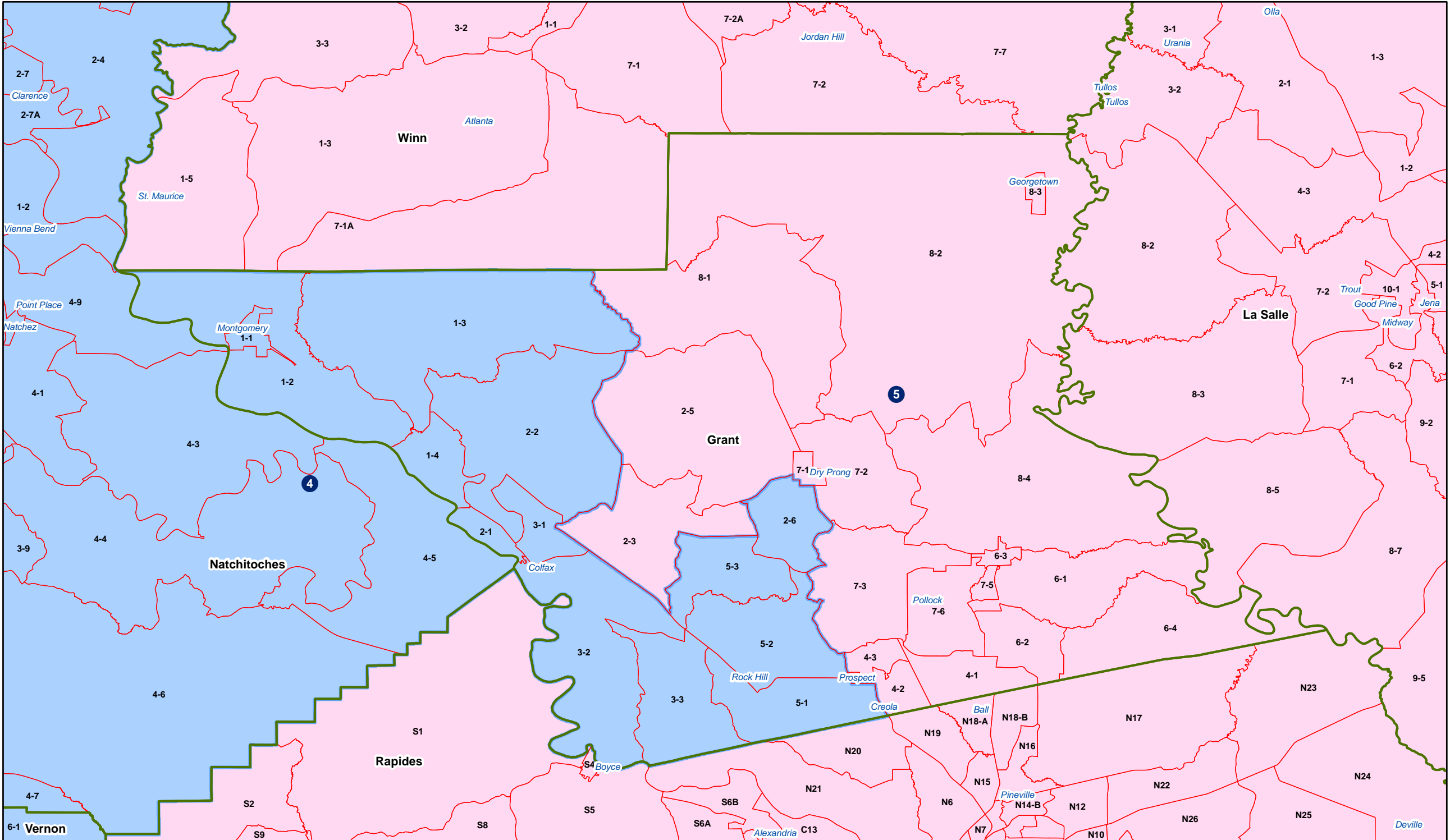
Congress - St. John-St. Charles



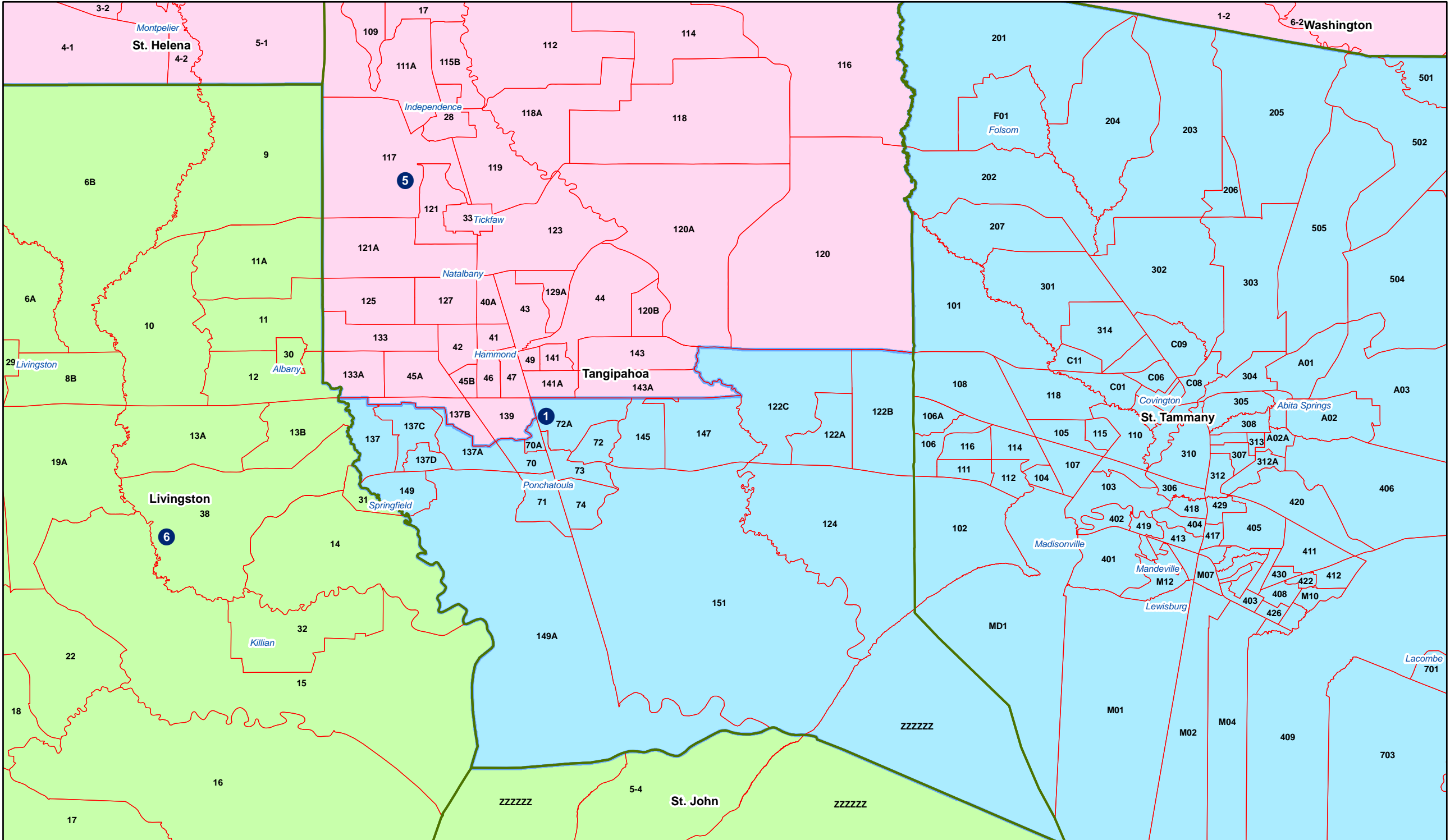
Congress - St. Landry



Congress - Grant



Congress - Tangipahoa



Congress - Calcasieu

