

Second Extraordinary Session, 2001

HOUSE BILL NO. 1

BY REPRESENTATIVES BRUNEAU, LANCASTER, AND DEWITT

REAPPORTIONMENT/HOUSE: Provides for redistricting of the Louisiana House of Representatives

1 AN ACT

2 To enact R.S. 24:35.5 and to repeal R.S. 24:35.4, relative to legislative
3 reapportionment; to provide for the redistricting of the House of
4 Representatives of the Legislature of Louisiana; to provide for effective
5 dates; and to provide for related matters.

6 Be it enacted by the Legislature of Louisiana:

7 Section 1. R.S. 24:35.5 is hereby enacted to read as follows:

8 §35.5. Membership of the House of Representatives

9 A. The House of Representatives of the Legislature of
10 Louisiana shall be composed of one hundred five members. Effective
11 with the opening of the qualifying period for the primary election in
12 2003 for members of the legislature, the state shall be divided into the
13 representative districts provided in this Section for purposes of election
14 of members at the 2003 regular elections. These districts shall be
15 effective for all purposes beginning at 10:00 a.m. on January 12, 2004.
16 One representative shall be elected from each district.

1 (1) District No. 1 is composed of Precincts 3-1, 3-2, and 3-3 of
2 Bossier Parish and Precincts 132, 133, 134, 135, 136, 137, 138, 139,
3 142, 143, 144, 145, 146, 147, 149, 150, 151, 154, 155, 156, 157, 158,
4 and 159 of Caddo Parish.

5 (2) District No. 2 is composed of Precincts 2-5, 2-6, 2-8, and 2-
6 23 of Bossier Parish and Precincts 6, 7, 15, 17, 29, 31, 37, 39, 40, 41,
7 44, 45, 46, 54, 64, 67, 71, 98, and 99 of Caddo Parish.

8 (3) District No. 3 is composed of Precincts 3, 4, 23, 25, 32, 34,
9 35, 36, 38, 50, 51, 52, 58, 59, 60, 61, 70, 78, and 80 of Caddo Parish.

10 (4) District No. 4 is composed of Precincts 1, 2, 5, 30, 55, 57,
11 73, 81, 82, 83, 84, 85, 86, 87, 122, 140, and 141 of Caddo Parish.

12 (5) District No. 5 is composed of Precincts 56, 69, 72, 75, 77,
13 79, 89, 90, 91, 92, 94, 97, and 128 of Caddo Parish.

14 (6) District No. 6 is composed of Precincts 4-8A, 4-8C, and 4-
15 10 of Bossier Parish and Precincts 8, 9, 10, 11, 12, 13, 14, 16, 20, 21,
16 22, 24, 26, 27, 48, 49, 68, 76, and 129 of Caddo Parish.

17 (7) District No. 7 is composed of Precincts 88, 93, 95, 123, 124,
18 125, 126, and 127 of Caddo Parish and Precincts 1, 2, 4, 6, 7, 8, 9, 10,
19 11, 12, 13, 16, 17, 18, 20, 24, 25, 26, 30, 32, 33, 34, 35, 36, 37, 38, 39,
20 40, 42, 43, 44, 45, 46, 47, 48, 49, 51, 53, 55, 58, 59, 60, and 63 of
21 DeSoto Parish.

22 (8) District No. 8 is composed of Precincts 1-1, 1-2, 1-3, 1-4,
23 1-5, 2-2, 2-4, 2-7, 2-9, 2-10, 2-11, 2-12A, 2-12B, 2-12C, 2-13, 2-14, 2-
24 15, 2-16, 2-18B, 2-18C, 2-20, 2-21A, 2-21B, and 2-22 of Bossier
25 Parish.

1 (9) District No. 9 is composed of Precincts 2-1, 2-3, 2-17A, 2-
2 17B, 2-18A, 2-19, 3-4, 4-1A, 4-2, 4-3A, 4-3B, 4-4A, 4-4B, 4-5A, 4-6,
3 4-7, 4-8B, 4-9, 4-11A, 4-11B, and 4-11C of Bossier Parish.

4 (10) District No. 10 is composed of Webster Parish.

5 (11) District No. 11 is composed of Precincts 1-1, 2-1, 2-2, 3-1,
6 and 3-3 of Bienville Parish; Claiborne Parish; and Precincts 1-A4, 1-
7 C3, 1-C4, 1-D1, 1-D2, 1-D3, 1-D4, 1-E1, 1-E2, 1-E3, 1-E4, 1-F1, 1-
8 F2, 1-G1, 1-G2, 2-A1, 2-A2, 2-A3, 2-A4, 2-B1, 2-B2, 3-1, 3-3, and 3-4
9 of Lincoln Parish.

10 (12) District No. 12 is composed of Precincts 1-A1, 1-A2, 1-
11 A3, 1-A5, 1-B1, 1-B2, 1-B3, 1-C1, 1-C2, 3-2, 3-5, 3-6, 4-1, 4-2, 4-3,
12 4-4, 4-5, 5-1, 5-2, 5-3, and 5-4 of Lincoln Parish and Union Parish.

13 (13) District No. 13 is composed of Precincts 1-2, 1-3, 2-3, 4-2,
14 4-3, 4-4, 5-2, 6-1, 6-2, 6-3, 6-4, 6-5, 7-1, 7-2, 7-3, and 7-4 of Bienville
15 Parish; Jackson Parish; Precincts 51, 52, 53, and 55 of Ouachita Parish;
16 and Precincts 3-2, 4-3, 4-4, 4-5, 5-1, 5-2, 5-3, 5-4, 5-5, 6-5, 6-6, 6-7,
17 and 6-8 of Winn Parish.

18 (14) District No. 14 is composed of Precincts 1, 2, 3, and 4 of
19 East Carroll Parish; Precincts 1, 2, 3, 4, 5, 11, 12, 13, 14, 15, 16, 17,
20 18, 19, 20, 21, 22, 23, 24, 25, 26, 27, 28, 29, 30, 31, and 32 of
21 Morehouse Parish; Precincts 1, 6, and 7 of Ouachita Parish; and
22 Precincts 9, 10, 11, 12, 13, 14, 15, 16, 17, and 18 of West Carroll
23 Parish.

24 (15) District No. 15 is composed of Precincts 27, 28, 29, 30, 31,
25 32, 33, 34, 35, 37, 38, 39, 40, 41, 44, 45, 46, 47, 48, 49, 54, 56, 57, and
26 58 of Ouachita Parish.

1 (16) District No. 16 is composed of Precincts 2, 3, 4, 5, 8, 36,
2 42, 43, 50, 59, 60, 61, 62, 63, 64, 67, 71, 72, 73, 75, 76, 77, and 78 of
3 Ouachita Parish.

4 (17) District No. 17 is composed of Precincts 10, 11, 12, 13, 14,
5 15, 16, 17, 18, 19, 20, 21, 22, 23, 24, 26, 65, 66, 68, 69, 70, 74, and 79
6 of Ouachita Parish.

7 (18) District No. 18 is composed of Pointe Coupee Parish;
8 Precincts 2-2, 2-3, 3-1, 4-2, 4-3, 4-5, 6-1, 6-2, 7-1, 7-2, 7-3, and 7-4 of
9 West Baton Rouge Parish; and Precinct 4-1 of West Feliciana Parish.

10 (19) District No. 19 is composed of Precincts 15, 17, and 18 of
11 East Carroll Parish; Precincts 1, 2, 3, 4, 5, 7, 8, 9, 10, 11, 12, 13, 14,
12 and 15 of Madison Parish; Precincts 6, 7, 8, 9, and 10 of Morehouse
13 Parish; Precincts 9 and 25 of Ouachita Parish; Richland Parish; and
14 Precincts 1, 2, 3, 4, 5, 6, 7, and 8 of West Carroll Parish.

15 (20) District No. 20 is composed of Caldwell Parish; Catahoula
16 Parish; and Franklin Parish.

17 (21) District No. 21 is composed of Concordia Parish; Precincts
18 5, 6, 7, 8, 9, 10, 11, 12, 13, 14, 16, and 19 of East Carroll Parish;
19 Precincts 6, 16, 17, 18, 19, 20, 21, 22, 23, 24, and 25 of Madison
20 Parish; and Tensas Parish.

21 (22) District No. 22 is composed of Grant Parish; La Salle
22 Parish; Precinct N23 of Rapides Parish; and Precincts 1-1, 1-2, 2-1, 2-
23 3, 3-1, 4-1, 6-1, 6-3, 7-1, 7-2, 7-5, and 7-7 of Winn Parish.

24 (23) District No. 23 is composed of Natchitoches Parish and
25 Precincts 1-3, 1-4, 1-5, and 3-3 of Winn Parish.

26 (24) District No. 24 is composed of Precincts 41, 56, and 57 of
27 De Soto Parish; Red River Parish; Sabine Parish; and Precincts 2-1, 2-

1 2, 2-3, 2-3A, 3-1, 3-2, 3-3, 3-4, 3-5, 4-1, 4-3A, 7-2, 7-2A, and 7-5B of
2 Vernon Parish.

3 (25) District No. 25 is composed of Precincts C13, C22, C23,
4 C24, C29, C30, C31, C32, C33, C34, C35, C36, C37, C38, S1, S2, S3,
5 S4, S5, S6, S8, S9, S10, S11, S12, S13, S14, S15, S19, S20, S27, and
6 S28 of Rapides Parish and Precincts 1-7, 8-1, 8-2, and 8-3 of Vernon
7 Parish.

8 (26) District No. 26 is composed of Precincts C1, C2, C3, C4,
9 C5, C6, C7, C8, C9, C10, C11, C12, C14, C15, C16, C17, C18, C19,
10 C20, C21, C25, C26, C27, C28, N1, N2, N3, N4, N9, and N11 of
11 Rapides Parish.

12 (27) District No. 27 is composed of Precincts N5, N6, N7, N8,
13 N10, N12, N13, N14, N15, N16, N17, N18, N19, N20, N21, N22,
14 N24, N25, N26, N27, N28, N29, S16, S17, S18, S21, S22, S23, S24,
15 S25, S26, and S29 of Rapides Parish.

16 (28) District No. 28 is composed of Avoyelles Parish.

17 (29) District No. 29 is composed of Precincts 1-17, 1-23, 1-58,
18 1-70, 1-77, 1-78, 1-82, 1-84, 1-85, 1-88, 1-93, 2-1, 2-23, 2-30, and 3-
19 24 of East Baton Rouge Parish and Precincts 4-1, 4-4, and 5-1 of West
20 Baton Rouge Parish.

21 (30) District No. 30 is composed of Precincts 17, 18, 25, 26,
22 26A, 27, 28, and 30 of Beauregard Parish and Precincts 1-1, 1-1A, 1-2,
23 1-3, 1-3A, 1-4, 1-5, 1-6, 1-8, 1-9, 2-1A, 2-4, 2-4A, 2-4B, 4-2, 4-3, 4-
24 3B, 6-1, 6-2, 6-3, 6-4, 7-1, 7-4, 7-5, and 7-5A of Vernon Parish.

25 (31) District No. 31 is composed of Precincts 25, 26, 28, 29, 31,
26 32, 37, 67, 80, 81, 82, 83, 84, 85, 86, 105, and 106 of Lafayette Parish
27 and Precincts 5, 7, 18, 24, 25, 26, and 44 of Vermilion Parish.

1 (32) District No. 32 is composed of Allen Parish; Precincts 2-A,
2 3, 4, 5, 6, 7, 8, 9, 14, 15, 15A, 16, 19, 19A, 20, 21, 22, and 27A of
3 Beauregard Parish; and Precincts 5-1, 5-2, and 7-3 of Vernon Parish.

4 (33) District No. 33 is composed of Precincts 1 and 2 of
5 Beauregard Parish and Precincts 400, 401, 402, 403, 404, 405, 406,
6 407, 408, 460, 461, 465, 466, 560, 561, 562, 600, 601, 602, 603, 660,
7 661, 700, 701, 702, 703, 760, and 761 of Calcasieu Parish.

8 (34) District No. 34 is composed of Precincts 300, 301, 302,
9 303, 304, 305, 307, 308, 309, 310, 311, 312, 313, 314, 315, 320, 321,
10 322, 323, 324, 328, 329, 330, 360, 361, and 364 of Calcasieu Parish.

11 (35) District No. 35 is composed of Precincts 10, 11, 12, 12A,
12 and 13 of Beauregard Parish and Precincts 160, 161, 162, 163, 164,
13 165, 166, 167, 306, 316, 317, 318, 319, 440, 441, 462, 463, 464, 662,
14 663, and 664 of Calcasieu Parish.

15 (36) District No. 36 is composed of Precincts 325, 326, 327,
16 331, 332, 333, 334, 335, 336, 337, 338, 339, 362, 363, 365, 366, 367,
17 368, 369, 371, 467, 468, 469, and 762 of Calcasieu Parish.

18 (37) District No. 37 is composed of Precincts 260, 261, 262,
19 370, 800, 801, 860, and 861 of Calcasieu Parish and Jefferson Davis
20 Parish.

21 (38) District No. 38 is composed of Precincts 1-1-0, 1-1-1, 1-2,
22 1-3, 1-4C, 1-4R, 1-5, 1-6, 1-7, 1-8-0, 1-8-1, 1-8-2, 1-9-0C, 1-9R, 1-10-
23 0, 1-10-1, 1-11, 1-12, 1-13-0, 1-13-1, 1-14, 1-15, 1-16-1R, 1-16-OR,
24 1-17-C, 1-17-R, 3-1, 3-2, 3-3, 3-4, 3-5, 3-6, 3-7, 4-1-0R, 4-1-1R, 4-1-
25 2R, 4-1C, 4-2-0, 4-2-1, 4-3, 4-4, 5-1, 5-2, 5-3, 5-4C, 5-4-R, and 5-5 of
26 Evangeline Parish and Precincts 1-6, 1-26, 4-1, 4-2, 4-3, 4-4, 4-5, 4-6,
27 4-7, 4-8, 4-9, 4-11, 4-12, 4-13, 4-14, 5-2, and 5-4 of St. Landry Parish.

1 (39) District No. 39 is composed of Precincts 1, 2, 3, 4, 5, 6, 7,
2 8, 9, 11, 12, and 13 of Lafayette Parish; Precincts 1-17, 1-28, 2-3, 2-7,
3 2-8, 3-1, 3-2, 3-3, 3-4, 3-5, and 3-6 of St. Landry Parish and Precincts
4 9-1 and 9-3 of St. Martin Parish.

5 (40) District No. 40 is composed of Precincts 1-1, 1-2, 1-3, 1-4,
6 1-4A, 1-5, 1-7, 1-8, 1-8A, 1-9, 1-10, 1-11, 1-12, 1-13, 1-14, 1-15, 1-
7 15A, 1-16, 1-18, 1-19, 1-20, 1-21, 1-22, 1-23, 1-24, 1-25, 1-29, 2-1, 2-
8 2, 2-4, 2-5, 2-6, 2-9, 4-10, 5-1, 5-3, 5-5, 5-6, 5-7, 5-8, and 6-11 of St.
9 Landry Parish.

10 (41) District No. 41 is composed of Precincts 2-1, 2-2, 2-3, 2-4,
11 2-5, 3-1, 3-2, 3-3A, 3-3B, 3-4, 3-5, 3-6, 3-7, 4-1, 4-2, 4-3, 4-6, 6-16,
12 7-1, 7-2, 7-3, and 7-4 of Acadia Parish; Precincts 2-1, 2-2, 2-3, 2-4, and
13 2-5 of Evangeline Parish; and Precincts 6-1, 6-2, 6-3, 6-4, 6-5, 6-6, 6-7,
14 6-8, 6-9, 6-10, 6-12, 6-13, 6-13A, 6-14, 6-15, and 6-16 of St. Landry
15 Parish.

16 (42) District No. 42 is composed of Precincts 1-1, 1-2A, 1-2B,
17 1-3A, 1-3B, 1-4A, 1-4B, 1-5A, 1-5B, 1-6, 1-7, 1-8, 1-9, 1-10, 1-11, 4-
18 4, 4-5, 5-1A, 5-1B, 5-2A, 5-2B, 5-3, 5-4, 5-5, 5-6, 6-1, 6-2, 6-3A, 6-
19 3B, 6-4, 6-5, 6-6, 6-7, 6-8, 6-9, 6-10, 6-11, 6-12, 6-13, 6-14, and 6-15
20 of Acadia Parish and Precincts 27 and 71 of Lafayette Parish.

21 (43) District No. 43 is composed of Precincts 87, 88, 89, 91, 92,
22 93, 94, 95, 96, 97, 98, 99, 100, 101, 102, 103, 104, and 107 of
23 Lafayette Parish.

24 (44) District No. 44 is composed of Precincts 10, 14, 15, 16, 17,
25 18, 19, 20, 21, 22, 23, 24, 50, 51, 52, 53, 54, 55, 56, 57, 58, 59, 60, 61,
26 62, 63, 64, 65, 66, 68, and 72 of Lafayette Parish.

1 (45) District No. 45 is composed of Precincts 30, 33, 34, 35, 36,
2 38, 39, 40, 41, 42, 43, 44, 45, 46, 47, 48, 49, 69, 70, 73, 74, 75, 76, 77,
3 78, 79, and 90 of Lafayette Parish.

4 (46) District No. 46 is composed of Precincts 1-1, 1-3, 1-4, 1-6,
5 1-7, 2-1 & 2-3, 2-2, 2-4, 3-1, 3-2, 3-3, 3-4, 3-5, 3-6, 3-7, 3-8, 3-9, 4-1,
6 4-2, 4-3, 4-4, 4-5, 4-6, 5-1, 5-2, 5-3 & 5-4, 6-1, 6-2, 6-3, 6-4, 7-1, 7-2,
7 7-3, 7-4, 8-1, 8-2, 8-3, 8-4, 9-2, 9-4, and 9-5 of St. Martin Parish.

8 (47) District No. 47 is composed of Cameron Parish and
9 Precincts 1, 2, 3, 6, 8, 9, 10, 11, 12, 13, 14, 15, 16, 19, 20A, 20B, 21,
10 23, 27A, 28, 29, 30, 31B, 32B, 34, 35, 36A, 37, 38, 39, 40, 41, 42,
11 46A, and 47 of Vermilion Parish.

12 (48) District No. 48 is composed of Precincts 1-1, 1-2, 1-3, 2-1,
13 2-2, 3-1, 3-2, 4-1, 4-2, 4-3, 4-4, 5-1, 5-2, 5-3, 5-4, 6-1, 6-2, 7-1, 7-2, 7-
14 3, 7-4, 8-1, 8-2, 8-3, 9-2, 9-3, 9-4, 9-5, and 10-2 of Iberia Parish.

15 (49) District No. 49 is composed of Precincts 2-3, 3-3, 6-3, 8-4,
16 8-5, 9-1, 10-1, 10-3, 10-4, 11-1, 11-2, 11-4, 12-1, 12-2, 12-3, 12-4, 13-
17 1, 13-2, 13-3, 13-4, 14-1, 14-2, 14-3, 14-4, and 14-5 of Iberia Parish
18 and Precincts 43, 45A, 45B, 46B, 49B, 50, 51, 52A, 52B, 53, 54, 55,
19 56, and 57 of Vermilion Parish.

20 (50) District No. 50 is composed of Precinct 11-3 of Iberia
21 Parish; Precincts 1-2 and 1-5 of St. Martin Parish and Precincts 1, 2, 3,
22 4, 4B, 5, 6, 7, 8, 9, 9A, 10, 11, 12, 13, 14, 15, 16, 17, 18, 18A, 19,
23 19A, 20, 21, 22, 23, 24, 25A, 25(A-J) & 25(K-Z), and 26 of St. Mary
24 Parish.

25 (51) District No. 51 is composed of Precincts 2-3, 3-1, 3-2, 4-1,
26 4-2, 9-1, and 9-2 of Assumption Parish; Precincts 27, 28, 29, 30, 31,
27 32, 33, 34A, 35, 36, 37, 38, 39, and 40 of St. Mary Parish; and

1 Precincts 1, 2, 3, 4, 5, 6, 7, 53, 54, 64, 65, 66, 67, 68, 70, 72, 73, and
2 76 of Terrebonne Parish.

3 (52) District No. 52 is composed of Precincts 8, 9, 10, 11, 12,
4 13, 14, 15, 16, 17, 18, 19, 20, 38, 40, 41, 42, 43, 44, 45, 46, 47, 48, 49,
5 50, 51, 69, and 74 of Terrebonne Parish.

6 (53) District No. 53 is composed of Precincts 11-1 and 11-2 of
7 Lafourche Parish and Precincts 21, 22, 23, 24, 25, 26, 27, 28, 29, 30,
8 31, 32, 33, 34, 35, 36, 37, 39, 52, 55, 56, 57, 58, 59, 60, 61, 62, 63, 71,
9 and 75 of Terrebonne Parish.

10 (54) District No. 54 is composed of Precinct 1-GI of Jefferson
11 Parish and Precincts 3-6, 4-1, 4-2, 4-3, 4-4, 4-5, 4-6, 6-3, 6-4, 7-1, 7-2,
12 7-3, 7-4, 8-1, 9-1, 9-2, 10-1, 10-2, 10-3, 10-4, 10-5, 10-6, 10-7, 10-8,
13 10-9, 10-10, 10-11, 10-12, 10-13, 10-14, 10-15, and 10-16 of
14 Lafourche Parish.

15 (55) District No. 55 is composed of Precincts 1-1, 1-2, 1-3, 1-4,
16 2-1, 2-2, 2-3, 2-4, 2-5, 2-6, 2-7, 2-8, 2-9, 2-10, 2-11, 2-12, 2-13, 3-1,
17 3-2, 3-3, 3-4, 3-5, 5-1, 5-2, 6-1, 6-2, 11-3, and 11-4 of Lafourche
18 Parish.

19 (56) District No. 56 is composed of Precincts 1-1, 1-2, 1-3, 1-5,
20 1-6, 2-1, 2-2, 2-3, 2-4, 2-7, 2-8, 3-1, 3-2, 3-3, 3-4, 4-1, 4-3, 4-4, 5-1, 5-
21 2, 5-3, 5-4, 5-5, 6-1, 6-2, 6-3, 6-4, 6-5, 6-6, 6-7, and 7-4 of St. Charles
22 Parish and Precincts 10-A, 10-B, 10-C, 10-D, 10-E, and 15 of St. John
23 the Baptist Parish.

24 (57) District No. 57 is composed of Precincts 1, 2, 3, 4, 5, 5-A,
25 6, 7, 7-A, 8, 8-A, and 9 of St. James Parish and Precincts 4, 5, 6-A, 6-
26 B, 6-C, 7, 8-A, 8-B, 9-A, 9-B, 9-C, 9-D, 9-E, 9-F, 11-A, 11-B, 11-C,

1 12-A, 12-B, 12-C, 13-A, 13-B, 14-A, 14-B, 14-C, 14-D, and 14-E of
2 St. John the Baptist Parish.

3 (58) District No. 58 is composed of Precincts 36, 37, 38, 39, 40,
4 45, 46, 47, 48, 49, 50, 51, 52, 54, and 55 of Ascension Parish; Precincts
5 1-1 and 1-2 of Assumption Parish; Precincts 1, 2, 3, 7, 8, 10, 10A, 11,
6 and 12 of Iberville Parish; Precincts 10, 11, 12, 13, 14, 15, 15-A, 16,
7 17, 17-A, and 18 of St. James Parish; and Precincts 1, 2, and 3 of St.
8 John the Baptist Parish.

9 (59) District No. 59 is composed of Precincts 1, 2, 3, 6, 7, 8, 9,
10 10, 11, 12, 13, 16, 17, 18, 19, 20, 21, 23, 24, 25, 28, 29, 30, 31, 32, and
11 33 of Ascension Parish.

12 (60) District No. 60 is composed of Precinct 53 of Ascension
13 Parish; Precincts 2-1, 2-2, 5-1, 5-2, 5-3, 6-1 & 6-1A, 6-2, 7-1 & 7-1A,
14 7-2, and 8-1 of Assumption Parish; Precincts 4, 5, 6, 6A, 13, 13A, 13B,
15 14, 14A, 14B, 15, 15A, 15B, 16, 17, 17A, 18, 19, 19A, 20, 21, 22, 23,
16 24, 25, 25A, 25B, 26, 26A, 27, 28, 29, 30, 31, and 32 of Iberville
17 Parish; and Precincts 1-1, 2-1, and 3-2 of West Baton Rouge Parish.

18 (61) District No. 61 is composed of Precincts 1-2, 1-7, 1-14, 1-
19 24, 1-25, 1-26, 1-27, 1-28, 1-29, 1-30, 1-31, 1-32, 1-33, 1-35, 1-36, 1-
20 37, 1-40, 1-50, 1-57, 1-61, 1-62, 1-63, and 1-64 of East Baton Rouge
21 Parish.

22 (62) District No. 62 is composed of Precincts 2-18, 2-21, and
23 2-29 of East Baton Rouge Parish; Precincts 1-1, 1-2, 1-3, 2-1B, 2-1C,
24 3-1A, 3-1B, 3-1C, 5-2, and 6-1 of East Feliciana Parish; Precinct 9 of
25 Livingston Parish; Precincts 3-2, 4-1, 5-1, 5-2, and 6-2 of St. Helena
26 Parish; Precincts 33, 40A, 117, 121, 121A, 125, and 127 of Tangipahoa

1 Parish; and Precincts 1-1, 2-1, 2-2, 5-2, 6-1, 6-2, 7-1, 7-2, and 7-3 of
2 West Feliciana Parish.

3 (63) District No. 63 is composed of Precincts 1-86, 1-91, 1-92,
4 1-94, 1-95, 1-100, 1-101, 2-2, 2-4, 2-5, 2-9, 2-11, 2-12, 2-13, 2-16, 2-
5 17, 2-22, 2-24, 2-25, and 2-27 of East Baton Rouge Parish.

6 (64) District No. 64 is composed of Precincts 2-3, 2-6, 2-7, 2-8,
7 2-10, 2-14, 2-15, 2-26, 2-28, and 3-2 of East Baton Rouge Parish and
8 Precincts 1, 2, 3, 3-A, 4, 6, and 10 of Livingston Parish.

9 (65) District No. 65 is composed of Precincts 1-97, 1-98, 3-1,
10 3-6, 3-8, 3-9, 3-12, 3-14, 3-21, 3-25, 3-26, 3-28, 3-30, 3-32, 3-42, and
11 3-46 of East Baton Rouge Parish.

12 (66) District No. 66 is composed of Precincts 1-9, 1-52, 1-53,
13 1-54, 1-55, 1-60, 1-71, 1-72, 1-81, 1-83, 1-87, 1-89, 1-90, 1-103, 1-
14 104, and 3-27 of East Baton Rouge Parish.

15 (67) District No. 67 is composed of Precincts 1-1, 1-3, 1-4, 1-5,
16 1-6, 1-10, 1-13, 1-15, 1-16, 1-18, 1-19, 1-21, 1-22, 1-38, 1-45, 1-46, 1-
17 51, 1-67, 1-68, 1-102, and 3-50 of East Baton Rouge Parish.

18 (68) District No. 68 is composed of Precincts 1-8, 1-39, 1-41,
19 1-42, 1-43, 1-44, 1-48, 1-56, 1-59, 1-65, 1-66, 1-73, 1-75, 1-105, 1-
20 107, 3-18, 3-23, 3-35, 3-51, and 3-52 of East Baton Rouge Parish.

21 (69) District No. 69 is composed of Precincts 1-34, 1-49, 1-74,
22 1-80, 1-99, 3-3, 3-7, 3-10, 3-11, 3-13, 3-15, 3-16, 3-17, 3-29, 3-31, 3-
23 38, and 3-41 of East Baton Rouge Parish.

24 (70) District No. 70 is composed of Precincts 1-12, 1-47, 1-69,
25 3-4, 3-5, 3-19, 3-20, 3-22, 3-33, 3-34, 3-36, 3-40, 3-48, and 3-49 of
26 East Baton Rouge Parish.

1 (71) District No. 71 is composed of Precincts 5, 5-A, 7-A, 8-A,
2 8-B, 19, 24, 24-A, 25, 26, 27, 28, 29, 35, 36, 39, 40, and 41 of
3 Livingston Parish.

4 (72) District No. 72 is composed of Precincts 2-1A, 3-2A, 3-2B,
5 4-1A, 4-1B, 4-2, 5-1, 5-3, 7-1, and 8-1 of East Feliciana Parish;
6 Precincts 1-1, 2-1, 2-2, 3-1, 3-3, and 6-1 of St. Helena Parish; Precincts
7 1, 2, 6, 11, 15, 16, 17, 18, 26, 27, 28, 43, 101, 103, 105, 107, 109, 111,
8 111A, 115B, 119, 123, and 129 of Tangipahoa Parish; and Precincts 2-
9 3, 3-2, 3-3, 4-3, 5-1, 5-3, and 6-3 of West Feliciana Parish.

10 (73) District No. 73 is composed of Precincts 40, 41, 42, 42A,
11 45, 45A, 46, 47, 48, 49, 70, 71, 72, 73, 74, 133, 137, 137A, 139, 141,
12 141A, 143, 145, 147, 149, and 151 of Tangipahoa Parish.

13 (74) District No. 74 is composed of Precincts 201, 203, 204,
14 205, 206, 302, 303, 304, 305, 308, 309, 504, 601, 602, 604, 606, A01,
15 and A02 of St. Tammany Parish; Precincts 102, 104, 104A, 106, 106A,
16 108, 110, 112, 114, 116, and 118 of Tangipahoa Parish; and Precincts
17 1-1, 1-1A, 1-2, 2-1, and 9-1 of Washington Parish.

18 (75) District No. 75 is composed of Precincts 501, 502, and 503
19 of St. Tammany Parish and Precincts 3-1, 3-2, 3-3, 3-3A, 3-3B, 3-3C,
20 4-1, 4-1A, 4-2, 4-2A, 4-3, 4-3B, 4-4, 4-5, 4-5A, 4-5B, 4-6, 4-7, 4-7B,
21 4-8, 4-8A, 4-8AA, 4-8AB, 4-8BB, 4-9, 4-9A, 4-10, 4-10A, 4-10B, 4-
22 11, 5-1, 5-1A, 5-2, 5-2A, 5-2B, 5-3, 6-1, 6-2, 6-3, 6-4, 6-4A, 7-1, 7-1A,
23 7-2, 7-3, 8-1, 8-2, 8-2A, and 8-3 of Washington Parish.

24 (76) District No. 76 is composed of Precincts 603, 801, 803,
25 804, 805, 806, 807, 808, 809, 810, 811, 812, 813, 814, 909, P01, S09,
26 S10, S11, S12, S14, S15, S17, S19, S20, and S21 of St. Tammany
27 Parish.

1 (77) District No. 77 is composed of Precincts 101, 102, 103,
2 104, 105, 202, 207, 301, 306, 307, 401, 402, 404, 418, 419, C01, C02,
3 C03, C04, C05, C06, C07, C08, C09, F01, and MD1 of St. Tammany
4 Parish and Precincts 44, 120, 120A, 122, 122A, and 124 of Tangipahoa
5 Parish.

6 (78) District No. 78 is composed of Precincts 7, 8, 9, 51, 52, 53,
7 54, 55, 56, 57, 58, 61, 116, 117, 118, 119, 120, 121, 122, 123, 124, 1-
8 H, 2-H, 3-H, 4-H, 5-H, 6-H, 7-H, 8-H, and 9-H of Jefferson Parish.

9 (79) District No. 79 is composed of Precincts 1, 2, 3, 4, 12, 13,
10 14, 15, 16, 1-K, 2-K, 3-K, 4-K, 5-K, 6-K, 7-K, 8-K, 9-K, 10-K, 12-K,
11 34-K, and 35-K of Jefferson Parish.

12 (80) District No. 80 is composed of Precincts 17, 19, 20, 22, 23,
13 24, 25, 26, 27, 28, 29, 30, 31, 32, 70, 71, 73, 74, 76, 77, and 78 of
14 Jefferson Parish.

15 (81) District No. 81 is composed of Precincts 33, 34, 35, 36, 37,
16 38, 39, 40, 41, 42, 43, 44, 45, 46, 79, 80, 81, 82, 83, 84, 85, 86, 87, 88,
17 89, 90, 91, 92, 93, 94, 95, 96, 97, 98, 99, 100, 101, 102, 103, and 107
18 of Jefferson Parish.

19 (82) District No. 82 is composed of Precincts 5, 10, 11, 18, 21,
20 59, 60, 62, 63, 64, 65, 66, 67, 68, 69, 72, 75, 105, 106, 125, 126, 127,
21 128, 129, 130, 131, 132, 133, 134, 136, and 138 of Jefferson Parish.

22 (83) District No. 83 is composed of Precincts 150, 151, 152,
23 153, 154, 155, 156, 157, 170, 172, 179A, 188, 1-W, 2-W, 3-W, 4-W,
24 5-W, 6-W, and 7-W of Jefferson Parish.

25 (84) District No. 84 is composed of Precincts 174, 175, 176,
26 177, 178, 182, 183, 184, 185, 189, 190, 191, 192, 193, 194, 198, 199,
27 202, 203, 204, and 246 of Jefferson Parish.

1 (85) District No. 85 is composed of Precincts 215, 216, 217,
2 233, 234, 235, 236, 237, 238, 1-G, 2-G, 3-G, 4-G, 5-G, 6-G, 7-G, 8-G,
3 9-G, 10-G, and 11-G of Jefferson Parish.

4 (86) District No. 86 is composed of Precincts 225, 226, 227,
5 228, 229, 230, 231, and 232 of Jefferson Parish and Precincts 15-14C,
6 15-17, 15-18, 15-18A, 15-18B, 15-18C, 15-18D, 15-18E, 15-18F, and
7 15-19A of Orleans Parish.

8 (87) District No. 87 is composed of Precincts 171, 173, 179B,
9 180, 181, 187, 195, 196, 197, 200, 201, 205, 210, 211, 212, 213A,
10 213B, 213C, and 214 of Jefferson Parish.

11 (88) District No. 88 is composed of Precincts 4, 5, 14, 15, 22,
12 26, 27, 34, 35, and 41 of Ascension Parish and Precincts 7, 11, 12, 13,
13 14, 15, 16, 17, 18, 20, 21, 22, 23, 30, 31, 32, 33, 34, 38, and 43 of
14 Livingston Parish.

15 (89) District No. 89 is composed of Precincts 12-17, 12-18, 12-
16 19, 12-20, 13-1, 13-2, 13-3, 13-4, 13-5, 13-6, 13-8, 13-9, 13-10, 13-11,
17 13-12, 13-13, 13-14, 13-14A, 13-15, 13-16, 14-1, 14-2, 14-3, 14-4, 14-
18 5, 14-6, 14-7, 14-8, 14-9, 14-10, 14-11, 14-12, 14-13A, 14-14, 14-15,
19 14-16, 14-17, 14-18A, 14-19, 14-20, 14-21, 14-22, 14-23, 14-24A, 14-
20 25, 14-26, and 16-1 of Orleans Parish.

21 (90) District No. 90 is composed of Precincts 706, 802, 901,
22 902, 903, 904, 905, 906, 907, 908, 910, 911, 912, 913, 914, 915, S01,
23 S02, S03, S04, S05, S06, S07, S08, S13, S16, S18, and S22 of St.
24 Tammany Parish.

25 (91) District No. 91 is composed of Precincts 2-7, 10-3, 10-5,
26 10-6, 10-7, 10-8, 10-9, 10-11, 11-2, 11-3, 11-4, 11-5, 11-8, 11-9, 11-
27 10, 11-11, 11-12, 11-13, 11-14, 11-15, 11-16, 11-17, 11-18, 11-19, 12-

CODING: Words in ~~struck through~~ type are deletions from existing law; words underscored are additions.

1 ~~1, 12-2, 12-3, 12-4, 12-5, 12-6, 12-7, 12-8, 12-9, 12-10, 12-11, 12-12,~~
2 ~~12-13, 12-14, 12-16, and 13-7 of Orleans Parish.~~

3 (92) District No. 92 is composed of Precincts 104, 108, 115, 11-
4 K, 13-KA, 13-KB, 14-K, 15-K, 16-K, 17-K, 18-K, 19-K, 20-K, 21-K,
5 22-K, 23-K, 24-K, 25-K, 26-K, 27-K, 28-K, 29-K, 30-K, 31-K, and 33-
6 K of Jefferson Parish.

7 (93) District No. 93 is composed of Precincts 1-1, 1-2, 1-5, 1-6,
8 1-7, 2-1, 2-2, 2-3, 2-4, 2-6, 2-6A, 3-1, 3-3, 4-2, 4-3, 4-4, 4-5, 5-1, 5-2,
9 5-3, 5-4, 6-1, 6-2, 6-4, 6-5, 7-1, 7-2, 7-4, 8-1, 8-2, 8-4, 8-6, 8-7, 9-12,
10 9-13, 9-14, 9-15, 10-12, 10-13, and 10-14 of Orleans Parish.

11 (94) District No. 94 is composed of Precincts 3-19, 3-20, 4-6,
12 4-7, 4-8, 4-9, 4-10, 4-10A, 4-11, 4-14, 4-14A, 4-15, 4-16, 4-16A, 4-17,
13 4-17A, 4-18, 4-18A, 4-19, 4-20, 4-20A, 4-21, 4-21A, 4-22, 4-23, 5-12,
14 5-13, 5-14, 5-15, 5-16, 5-17, 5-18, 6-8, 6-9, 7-32, 7-33A, 7-37, 7-37A,
15 7-38A, 7-39, 7-40, 7-41, 7-42, 8-28, 17-17, 17-18, 17-18A, 17-18B,
16 17-19, 17-19A, 17-20, and 17-21 of Orleans Parish.

17 (95) District No. 95 is composed of Precincts 3-5, 3-8, 3-9, 3-
18 10, 3-12, 3-14, 3-15, 3-16, 3-18, 16-1A, 16-2, 16-3, 16-4, 16-5, 16-6,
19 16-7, 16-8, 16-9, 17-1, 17-2, 17-3, 17-4, 17-5, 17-6, 17-7, 17-8, 17-9,
20 17-10, 17-11, 17-12, 17-13, 17-13A, 17-14, 17-15, and 17-16 of
21 Orleans Parish.

22 (96) District No. 96 is composed of Precincts 5-5, 5-6, 5-7, 5-8,
23 5-9, 5-10, 5-11, 6-6, 6-7, 7-4A, 7-5, 7-6, 7-7, 7-10, 7-11, 7-12, 7-13, 7-
24 14, 7-15, 7-16, 7-17, 7-18, 7-19, 7-20, 7-20A, 7-21, 7-27, 7-27A, 7-
25 27B, 7-28, 7-28A, 7-30, 7-31, 7-33, 7-34, 7-35, 7-36, and 7-36A of
26 Orleans Parish.

1 (97) District No. 97 is composed of Precincts 7-8, 7-9, 7-9A, 7-
2 22, 7-23, 7-24, 7-25, 7-25A, 7-26, 7-26A, 7-29, 8-8, 8-9, 8-10, 8-11,
3 8-12, 8-13, 8-14, 8-15, 8-16, 8-17, 8-18, 8-19, 8-20, 8-21, 8-22, 8-23,
4 8-24, 8-25, 8-25A, 8-26, 8-26A, 8-27, 8-27A, 8-29, 8-30, 9-29, 9-29A,
5 9-30, 9-30A, 9-31, 9-31A, 9-31B, 9-31C, 9-31D, and 9-31E of Orleans
6 Parish.

7 (98) District No. 98 is composed of Precincts 403, 405, 406,
8 407, 408, 409, 410, 411, 412, 413, 414, 415, 416, 417, 420, 605, 701,
9 702, 703, 704, 705, M01, M02, M03, M04, M05, M06, M07, M08, and
10 M09 of St. Tammany Parish.

11 (99) District No. 99 is composed of Precincts 9-1, 9-2, 9-3A, 9-
12 3B, 9-3, 9-4, 9-5, 9-5A, 9-6B, 9-6C, 9-6D, 9-6E, 9-6F, 9-7, 9-8, 9-8A,
13 9-8B, 9-9, 9-10, 9-11, 9-16, 9-17, 9-18, 9-19, 9-21, 9-22, 9-23, 9-24,
14 9-25, 9-25A, 9-26, 9-26A, 9-27, 9-28, 9-28A, 9-28C, 9-28D, 9-28E,
15 and 9-28F of Orleans Parish.

16 (100) District No. 100 is composed of Precincts 9-38, 9-39, 9-
17 39A, 9-39B, 9-40, 9-40A, 9-40B, 9-40C, 9-43H, 9-43N, 9-44, 9-44A,
18 9-44B, 9-44D, 9-44E, 9-44F, 9-44G, 9-44I, 9-44J, 9-44L, 9-44M, 9-
19 44N, 9-44O, 9-44P, and 9-44Q of Orleans Parish.

20 (101) District No. 101 is composed of Precincts 9-32, 9-33, 9-
21 33A, 9-34, 9-34A, 9-35, 9-35A, 9-36, 9-36A, 9-36B, 9-36C, 9-37, 9-
22 37A, 9-38A, 9-38B, 9-42, 9-42A, 9-42B, 9-42C, 9-42D, 9-42E, 9-43A,
23 9-43B, 9-43C, 9-43D, 9-43E, 9-43F, 9-43G, 9-43I, 9-43J, 9-43K, 9-
24 43L, and 9-43M of Orleans Parish.

25 (102) District No. 102 is composed of Precincts 15-1, 15-2, 15-
26 3, 15-5, 15-6, 15-8, 15-9, 15-10, 15-11, 15-12, 15-12A, 15-13, 15-13A,
27 15-13B, 15-14, 15-14A, 15-14B, 15-14D, 15-14E, 15-14F, 15-14G, 15-

1 15, 15-15A, 15-15B, 15-16, 15-17A, 15-17B, 15-19, 15-19B, and 15-
2 19C of Orleans Parish.

3 (103) District No. 103 is composed of Precincts 9-41, 9-41A,
4 9-41B, 9-41C, 9-41D, 9-45, and 9-45A of Orleans Parish and Precincts
5 10, 11, 12, 13, 14, 15, 16, 18, 24, 26, 27, 52, 53, 54, 55, 56, 57, and 58
6 of St. Bernard Parish.

7 (104) District No. 104 is composed of Precincts 17, 20, 21, 22,
8 23, 25, 28, 30, 31, 32 & 33, 34, 35, 36, 40, 41, 42 & 42A, 43 & 43A,
9 44, 50, and 51 of St. Bernard Parish.

10 (105) District No. 105 is composed of Precincts 247, 248, 249,
11 and 1-L of Jefferson Parish; Plaquemines Parish; and Precincts 2-5, 4-
12 2, 7-1, 7-2, 7-3 of St. Charles Parish.

13 B. The precincts to which reference is made in this Section are
14 those adopted by the respective parish governing authorities under the
15 provisions of R.S. 18:532 and made effective not later than January 1,
16 2000, for the purpose of establishing block boundaries for the 2000
17 federal decennial census and for reapportionment purposes. However,
18 for those precincts subsequently changed by or pursuant to a court
19 order or by ordinance of the respective parish governing authority as
20 provided in R.S. 18:532.1(G) and validated by the Legislature of
21 Louisiana prior to June 23, 2001, reference is to precincts so changed
22 and validated.

23 C. When a precinct enumerated in this Section has been
24 subdivided by action of the parish registrar of voters or governing
25 authority on a nongeographic basis (for purposes of polling), or
26 subdivided by action of the parish governing authority on a geographic
27 basis under the provisions of R.S. 18:532.1(G), the enumeration in this

1 Section of the general precinct designation shall include all polling
2 subdivisions thereof and all geographic subdivisions thereof, however
3 such subdivisions may be designated. The territorial limits of the
4 districts as provided in Subsection A of this Section and subject to the
5 provisions of Subsection B of this Section shall continue in effect
6 without change regardless of any changes made to the precincts by the
7 parish registrar of voters or the parish governing authority.

8 Section 2. The House of Representatives Districts established by R.S.
9 24:35.4 shall remain in full force and effect for all purposes, except for the
10 election of members of the House of Representatives at the 2003 regular
11 elections as provided in Section 1 of this Act, until 10:00 a.m., January 12,
12 2004.

13 Section 3. R.S. 24:35.4 is hereby repealed effective at 10:00 a.m.,
14 January 12, 2004.

15 Section 4. This Section and Sections 1 and 2 of this Act shall become
16 effective upon signature by the governor or, if not signed by the governor,
17 upon expiration of the time for bills to become law without signature by the
18 governor, as provided in Article III, Section 18 of the Constitution of
19 Louisiana. If vetoed by the governor and subsequently approved by the
20 legislature, this Section and Sections 1 and 2 of this Act shall become effective
21 on the day following such approval.

DIGEST

The digest printed below was prepared by House Legislative Services. It constitutes no part of the legislative instrument.

Bruneau, et al.

HB No. 1

Abstract: Provides for the redistricting of the House of Representatives and provides for the composition of each of the 105 House districts. Effective for election purposes for the regular legislative elections in 2003 and for all purposes on Jan. 12, 2004.

Statistical summaries of the proposed law, including district variances from the ideal population of 42,561 and the range of those variances, as well as maps illustrating proposed district boundaries accompany this digest. (*Attached to hard copies of the bill distributed during session and available as a separate document on the Internet.*)

Present constitution (Const. Art. III, §6(A)) requires the legislature, by the end of the year following the year in which the state's population is reported to the president of the United States for each decennial federal census, to reapportion the representation in each house as equally as practicable on the basis of population shown by the census.

Present law divides the state into 105 districts for election of members of the House of Representatives.

Proposed law reapportions the state's population for representation in the House and redraws district boundaries for 105 House districts, effective for election purposes with the opening of the qualifying period for the 2003 primary election for members of the legislature.

Proposed law specifies that precincts referenced in district descriptions are those adopted by the respective parish governing authorities under R.S. 18:532 and made effective not later than January 1, 2000, for the purpose of establishing block boundaries for the 2000 federal decennial census, except that for precincts changed by court order or ordinance as provided by present law and validated by the legislature prior to June 23, 2001, reference is to precincts so changed and validated. Also specifies that if any such precinct has been subdivided on a nongeographic or geographic basis under existing law, the general precinct designation in the district description includes all nongeographic and geographic subdivisions of the precinct. Further provides that the territorial limits of the House districts as enacted shall continue in effect without change regardless of any changes made to the precincts by the parish registrar of voters or the parish governing authority.

Proposed law retains present districts until 10:00 a.m., January 12, 2004, at which time present law is repealed and proposed districts are effective for all purposes.

Effective upon signature of governor or lapse of time for gubernatorial action (except repeal of R.S. 24:35.4 is effective at 10:00 a.m., January 12, 2004).

Population counts in the summaries accompanying this digest are derived from Census 2000 Redistricting Data (P.L. 94-171), Summary File, Census of Population and Housing, Louisiana (U.S. Department of Commerce, Bureau of the Census, issued March 9, 2001), as validated and adjusted by staff of the Louisiana Legislature. Population data, statistical information, and maps are supplied for purposes of information and analysis and comprise no part of proposed law text.

(Adds R.S. 24:35.5; Repeals R.S. 24:35.4)

Summary of Amendments Adopted by House

Committee Amendments Proposed by House Committee on House and Governmental Affairs to the original bill.

1. Precinct 2-1 in West Baton Rouge Parish is moved from District No. 18 to District No. 60.
2. Precinct 2-2 in West Baton Rouge Parish is moved from District No. 60 to District No. 18.
3. Precinct 6-2 in West Baton Rouge Parish is moved from District No. 29 to District No. 18.
4. Precinct 23 in Vermilion Parish is moved from District No. 49 to District No. 47.
5. Precinct 42 in Vermilion Parish is moved from District No. 47 to District No. 49.
6. Precinct 5 in Jefferson Parish is moved from District No. 79 to District No. 82.
7. Precinct 15-14G in Orleans Parish is moved from District No. 86 to District No. 102.
8. Precincts 15-14C, 15-17, and 15-18B in Orleans Parish are moved from District No. 102 to District No. 86.

House Floor Amendments to the engrossed bill.

1. Moves Precincts 1-2, 1-3, 1-4, and 1-5 in Bossier Parish from District No. 6 to District No. 8.
2. Moves Precincts 2-17A, 2-17B, and 2-19 in Bossier Parish from District No. 8 to District No. 9.
3. Moves Precincts 4-8A and 4-10 in Bossier Parish from District No. 9 to District No. 6.

4. Moves Precincts 7 and 8 in Beauregard Parish from District No. 30 to District No. 32.
5. Moves Precincts 26, 27, 28, and 30 in Beauregard Parish from District No. 32 to District No. 30.
6. Moves Precincts 2-3A, 7-2A, and 7-5B in Vernon Parish from District No. 30 to District No. 24.
7. Moves Precincts 5-1, 5-2, and 7-3 in Vernon Parish from District No. 30 to District No. 32.
8. Moves Precinct No. 42 in Vermilion Parish from District No. 49 to District No. 47.
9. Moves Precinct No. 46B in Vermilion Parish from District No. 47 to District No. 49.
10. Moves Precinct No. S09 in St. Tammany Parish from District No. 90 to District No. 76.
11. Moves Precinct No. S16 in St. Tammany Parish from District No. 76 to District No. 90.
12. Moves Precinct 11-4 in Iberia Parish from District No. 50 to District No. 49.

Plan Statistics

Districts:	# of Members	Actual Population	Ideal Population	Absolute Deviation	Relative Deviation
District 1	1	42,333	42,561	-228	-0.536%
District 2	1	41,117	42,561	-1,444	-3.393%
District 3	1	42,654	42,561	93	0.219%
District 4	1	41,163	42,561	-1,398	-3.285%
District 5	1	40,920	42,561	-1,641	-3.856%
District 6	1	41,854	42,561	-707	-1.661%
District 7	1	41,566	42,561	-995	-2.338%
District 8	1	43,176	42,561	615	1.445%
District 9	1	40,669	42,561	-1,892	-4.445%
District 10	1	41,831	42,561	-730	-1.715%
District 11	1	44,347	42,561	1,786	4.196%
District 12	1	42,260	42,561	-301	-0.707%
District 13	1	40,846	42,561	-1,715	-4.030%
District 14	1	43,528	42,561	967	2.272%
District 15	1	44,655	42,561	2,094	4.920%
District 16	1	40,911	42,561	-1,650	-3.877%
District 17	1	41,428	42,561	-1,133	-2.662%
District 18	1	40,668	42,561	-1,893	-4.448%
District 19	1	41,837	42,561	-724	-1.701%
District 20	1	42,743	42,561	182	0.428%
District 21	1	41,580	42,561	-981	-2.305%
District 22	1	42,680	42,561	119	0.280%
District 23	1	40,970	42,561	-1,591	-3.738%
District 24	1	44,628	42,561	2,067	4.857%
District 25	1	44,157	42,561	1,596	3.750%
District 26	1	42,886	42,561	325	0.764%
District 27	1	44,258	42,561	1,697	3.987%
District 28	1	41,481	42,561	-1,080	-2.538%
District 29	1	42,742	42,561	181	0.425%
District 30	1	44,470	42,561	1,909	4.485%
District 31	1	42,619	42,561	58	0.136%
District 32	1	42,541	42,561	-20	-0.047%
District 33	1	44,456	42,561	1,895	4.452%
District 34	1	44,231	42,561	1,670	3.924%
District 35	1	44,357	42,561	1,796	4.220%
District 36	1	44,542	42,561	1,981	4.654%
District 37	1	44,178	42,561	1,617	3.799%
District 38	1	44,489	42,561	1,928	4.530%
District 39	1	44,063	42,561	1,502	3.529%
District 40	1	43,388	42,561	827	1.943%
District 41	1	43,221	42,561	660	1.551%
District 42	1	40,777	42,561	-1,784	-4.192%
District 43	1	40,762	42,561	-1,799	-4.227%
District 44	1	41,848	42,561	-713	-1.675%
District 45	1	41,516	42,561	-1,045	-2.455%
District 46	1	44,159	42,561	1,598	3.755%
District 47	1	44,232	42,561	1,671	3.926%
District 48	1	40,865	42,561	-1,696	-3.985%
District 49	1	43,526	42,561	965	2.267%
District 50	1	40,637	42,561	-1,924	-4.521%
District 51	1	44,586	42,561	2,025	4.758%
District 52	1	44,664	42,561	2,103	4.941%
District 53	1	44,541	42,561	1,980	4.652%
District 54	1	43,289	42,561	728	1.710%
District 55	1	43,703	42,561	1,142	2.683%
District 56	1	44,030	42,561	1,469	3.452%
District 57	1	44,221	42,561	1,660	3.900%
District 58	1	43,686	42,561	1,125	2.643%
District 59	1	43,377	42,561	816	1.917%
District 60	1	42,001	42,561	-560	-1.316%
District 61	1	44,472	42,561	1,911	4.490%
District 62	1	44,646	42,561	2,085	4.899%

Plan Statistics

Districts:	# of Members	Actual Population	Ideal Population	Absolute Deviation	Relative Deviation
District 63	1	44,156	42,561	1,595	3.748%
District 64	1	40,726	42,561	-1,835	-4.311%
District 65	1	41,750	42,561	-811	-1.906%
District 66	1	41,425	42,561	-1,136	-2.669%
District 67	1	41,219	42,561	-1,342	-3.153%
District 68	1	43,168	42,561	607	1.426%
District 69	1	42,607	42,561	46	0.108%
District 70	1	43,717	42,561	1,156	2.716%
District 71	1	42,802	42,561	241	0.566%
District 72	1	41,710	42,561	-851	-1.999%
District 73	1	44,437	42,561	1,876	4.408%
District 74	1	43,891	42,561	1,330	3.125%
District 75	1	42,478	42,561	-83	-0.195%
District 76	1	42,939	42,561	378	0.888%
District 77	1	43,549	42,561	988	2.321%
District 78	1	44,240	42,561	1,679	3.945%
District 79	1	42,408	42,561	-153	-0.359%
District 80	1	43,165	42,561	604	1.419%
District 81	1	41,531	42,561	-1,030	-2.420%
District 82	1	41,753	42,561	-808	-1.898%
District 83	1	40,537	42,561	-2,024	-4.756%
District 84	1	40,812	42,561	-1,749	-4.109%
District 85	1	42,542	42,561	-19	-0.045%
District 86	1	41,623	42,561	-938	-2.204%
District 87	1	42,057	42,561	-504	-1.184%
District 88	1	44,114	42,561	1,553	3.649%
District 89	1	41,572	42,561	-989	-2.324%
District 90	1	41,523	42,561	-1,038	-2.439%
District 91	1	40,633	42,561	-1,928	-4.530%
District 92	1	44,404	42,561	1,843	4.330%
District 93	1	40,969	42,561	-1,592	-3.741%
District 94	1	40,457	42,561	-2,104	-4.943%
District 95	1	43,154	42,561	593	1.393%
District 96	1	41,996	42,561	-565	-1.328%
District 97	1	41,480	42,561	-1,081	-2.540%
District 98	1	43,049	42,561	488	1.147%
District 99	1	41,268	42,561	-1,293	-3.038%
District 100	1	40,534	42,561	-2,027	-4.763%
District 101	1	40,874	42,561	-1,687	-3.964%
District 102	1	40,589	42,561	-1,972	-4.633%
District 103	1	41,587	42,561	-974	-2.288%
District 104	1	40,597	42,561	-1,964	-4.615%
District 105	1	40,953	42,561	-1,608	-3.778%

Grand Total:	105	4,468,976	4,468,905
---------------------	------------	------------------	------------------

Ideal Population Per Member:	42,561			Ideal - Actual: -71 Remainder: 71 Unassigned Population: 0
Number of Districts for Plan Type:	105			
Range of District Populations:	40,457	to	44,664	
Absolute Mean Deviation	40			
Absolute Range:	-2,104	to	2,103	
Absolute Overall Range:	4,207			
Relative Mean Deviation:	0.00%			
Relative Range:	-4.94%	to	4.94%	
Relative Overall Range:	9.88%			

District Summary

Total Population Ethnic Breakout

Name	Tot Pop	Tot White	Tot Black	Tot Asian	Tot Other	Tot Hispanic	Reg Total
District 1	42,333	30,751	10,820	127	635	475	22,766
	100.000%	72.641%	25.559%	0.300%	1.500%	1.122%	73.370%
District 2	41,117	9,508	30,838	209	562	791	19,699
	100.000%	23.124%	75.001%	0.508%	1.367%	1.924%	66.456%
District 3	42,654	7,035	35,142	177	300	378	20,651
	100.000%	16.493%	82.389%	0.415%	0.703%	0.886%	71.029%
District 4	41,163	13,516	27,043	184	420	588	22,312
	100.000%	32.835%	65.697%	0.447%	1.020%	1.428%	75.198%
District 5	40,920	32,791	6,725	712	692	794	23,010
	100.000%	80.134%	16.435%	1.740%	1.691%	1.940%	73.750%
District 6	41,854	34,715	5,623	798	718	989	24,891
	100.000%	82.943%	13.435%	1.907%	1.715%	2.363%	77.002%
District 7	41,566	28,395	12,309	153	709	699	24,565
	100.000%	68.313%	29.613%	0.368%	1.706%	1.682%	81.736%
District 8	43,176	33,935	7,340	878	1,023	1,451	22,839
	100.000%	78.597%	17.000%	2.034%	2.369%	3.361%	72.314%
District 9	40,669	30,251	9,065	431	922	1,037	21,055
	100.000%	74.383%	22.290%	1.060%	2.267%	2.550%	73.283%
District 10	41,831	27,405	13,841	122	463	378	24,104
	100.000%	65.514%	33.088%	0.292%	1.107%	0.904%	77.440%
District 11	44,347	18,368	25,258	376	345	451	21,884
	100.000%	41.419%	56.955%	0.848%	0.778%	1.017%	64.395%
District 12	42,260	32,070	9,277	314	599	685	25,975
	100.000%	75.887%	21.952%	0.743%	1.417%	1.621%	81.662%
District 13	40,846	29,880	10,483	114	369	331	24,205
	100.000%	73.153%	25.665%	0.279%	0.903%	0.810%	79.283%
District 14	43,528	29,407	13,697	141	283	393	26,940
	100.000%	67.559%	31.467%	0.324%	0.650%	0.903%	85.129%
District 15	44,655	39,510	4,433	199	513	612	25,633
	100.000%	88.478%	9.927%	0.446%	1.149%	1.371%	78.061%
District 16	40,911	33,131	6,752	626	402	545	23,774
	100.000%	80.983%	16.504%	1.530%	0.983%	1.332%	74.403%
District 17	41,428	5,127	35,908	196	197	348	22,991
	100.000%	12.376%	86.676%	0.473%	0.476%	0.840%	86.112%
District 18	40,668	24,156	16,098	100	314	506	23,453
	100.000%	59.398%	39.584%	0.246%	0.772%	1.244%	75.910%
District 19	41,837	26,174	15,123	110	430	639	24,298
	100.000%	62.562%	36.147%	0.263%	1.028%	1.527%	78.900%
District 20	42,743	30,612	11,645	90	396	418	27,218
	100.000%	71.619%	27.244%	0.211%	0.926%	0.978%	86.723%
District 21	41,580	17,804	23,398	88	290	526	25,013
	100.000%	42.819%	56.272%	0.212%	0.697%	1.265%	86.685%
District 22	42,680	34,651	7,236	107	686	412	25,744
	100.000%	81.188%	16.954%	0.251%	1.607%	0.965%	83.349%
District 23	40,970	23,981	15,673	206	1,110	581	23,305
	100.000%	58.533%	38.255%	0.503%	2.709%	1.418%	76.848%
District 24	44,628	32,834	8,750	239	2,805	965	26,409
	100.000%	73.573%	19.607%	0.536%	6.285%	2.162%	81.638%
District 25	44,157	33,809	8,644	541	1,163	942	23,980
	100.000%	76.565%	19.576%	1.225%	2.634%	2.133%	74.322%
District 26	42,886	14,676	27,216	550	444	395	22,578
	100.000%	34.221%	63.461%	1.282%	1.035%	0.921%	74.199%

District Summary

Total Population Ethnic Breakout

Name	Tot Pop	Tot White	Tot Black	Tot Asian	Tot Other	Tot Hispanic	Reg Total
District 27	44,258	39,034	3,944	275	1,005	832	25,753
	100.000%	88.196%	8.911%	0.621%	2.271%	1.880%	78.726%
District 28	41,481	28,402	12,362	93	624	404	23,201
	100.000%	68.470%	29.802%	0.224%	1.504%	0.974%	76.389%
District 29	42,742	7,314	33,987	1,175	266	525	21,884
	100.000%	17.112%	79.517%	2.749%	0.622%	1.228%	76.320%
District 30	44,470	29,491	11,564	1,066	2,349	2,681	17,586
	100.000%	66.317%	26.004%	2.397%	5.282%	6.029%	55.553%
District 31	42,619	38,264	3,353	514	488	723	25,435
	100.000%	89.782%	7.867%	1.206%	1.145%	1.696%	84.919%
District 32	42,541	34,445	6,838	209	1,049	1,345	21,813
	100.000%	80.969%	16.074%	0.491%	2.466%	3.162%	69.386%
District 33	44,456	40,054	3,693	156	553	550	26,828
	100.000%	90.098%	8.307%	0.351%	1.244%	1.237%	83.172%
District 34	44,231	12,468	31,011	271	481	472	27,403
	100.000%	28.188%	70.111%	0.613%	1.087%	1.067%	85.742%
District 35	44,357	38,047	5,469	303	538	639	25,976
	100.000%	85.775%	12.330%	0.683%	1.213%	1.441%	81.043%
District 36	44,542	40,026	3,284	662	570	705	27,167
	100.000%	89.861%	7.373%	1.486%	1.280%	1.583%	82.095%
District 37	44,178	36,028	7,499	156	495	456	27,039
	100.000%	81.552%	16.975%	0.353%	1.120%	1.032%	86.805%
District 38	44,489	31,551	12,561	103	274	430	27,261
	100.000%	70.919%	28.234%	0.232%	0.616%	0.967%	87.344%
District 39	44,063	33,079	10,355	215	414	507	25,868
	100.000%	75.072%	23.500%	0.488%	0.940%	1.151%	83.182%
District 40	43,388	16,963	25,994	115	316	376	24,087
	100.000%	39.096%	59.911%	0.265%	0.728%	0.867%	79.202%
District 41	43,221	33,627	9,203	78	313	435	24,591
	100.000%	77.802%	21.293%	0.180%	0.724%	1.006%	80.676%
District 42	40,777	31,578	8,846	101	252	369	24,391
	100.000%	77.441%	21.694%	0.248%	0.618%	0.905%	84.930%
District 43	40,762	35,614	4,131	480	537	803	23,835
	100.000%	87.371%	10.134%	1.178%	1.317%	1.970%	81.011%
District 44	41,848	14,012	27,089	315	432	532	23,077
	100.000%	33.483%	64.732%	0.753%	1.032%	1.271%	76.202%
District 45	41,516	35,975	3,981	902	658	959	24,643
	100.000%	86.653%	9.589%	2.173%	1.585%	2.310%	76.650%
District 46	44,159	28,289	15,104	467	299	376	27,395
	100.000%	64.062%	34.204%	1.058%	0.677%	0.851%	88.234%
District 47	44,232	36,245	6,637	902	448	719	27,621
	100.000%	81.943%	15.005%	2.039%	1.013%	1.626%	86.489%
District 48	40,865	25,623	13,791	1,022	429	566	23,914
	100.000%	62.702%	33.748%	2.501%	1.050%	1.385%	83.324%
District 49	43,526	32,318	9,721	720	767	662	25,883
	100.000%	74.250%	22.334%	1.654%	1.762%	1.521%	84.926%
District 50	40,637	25,300	13,827	244	1,266	552	24,048
	100.000%	62.259%	34.026%	0.600%	3.115%	1.358%	84.894%
District 51	44,586	30,289	10,768	879	2,650	1,034	24,284
	100.000%	67.934%	24.151%	1.971%	5.944%	2.319%	76.688%
District 52	44,664	36,927	5,699	362	1,676	821	24,499
	100.000%	82.677%	12.760%	0.810%	3.752%	1.838%	75.841%

District Summary

Total Population Ethnic Breakout

Name	Tot Pop	Tot White	Tot Black	Tot Asian	Tot Other	Tot Hispanic	Reg Total
District 53	44,541	31,818	8,254	539	3,930	662	21,706
	100.000%	71.435%	18.531%	1.210%	8.823%	1.486%	70.013%
District 54	43,289	38,436	2,211	408	2,234	742	24,666
	100.000%	88.789%	5.108%	0.943%	5.161%	1.714%	77.988%
District 55	43,703	33,625	9,241	277	560	446	23,689
	100.000%	76.940%	21.145%	0.634%	1.281%	1.021%	74.388%
District 56	44,030	30,081	13,003	284	662	1,312	24,919
	100.000%	68.319%	29.532%	0.645%	1.504%	2.980%	80.691%
District 57	44,221	25,001	18,299	278	643	1,098	25,642
	100.000%	56.536%	41.381%	0.629%	1.454%	2.483%	84.438%
District 58	43,686	14,386	28,972	78	250	453	26,038
	100.000%	32.930%	66.319%	0.179%	0.572%	1.037%	83.274%
District 59	43,377	37,604	4,606	217	950	1,447	23,790
	100.000%	86.691%	10.619%	0.500%	2.190%	3.336%	78.536%
District 60	42,001	25,515	16,070	89	327	476	27,284
	100.000%	60.749%	38.261%	0.212%	0.779%	1.133%	90.488%
District 61	44,472	9,722	34,116	345	289	477	22,466
	100.000%	21.861%	76.713%	0.776%	0.650%	1.073%	71.653%
District 62	44,646	30,065	13,887	227	467	573	25,530
	100.000%	67.341%	31.105%	0.508%	1.046%	1.283%	78.869%
District 63	44,156	10,728	33,065	127	236	334	23,348
	100.000%	24.296%	74.882%	0.288%	0.534%	0.756%	74.288%
District 64	40,726	34,794	5,461	81	390	341	24,687
	100.000%	85.434%	13.409%	0.199%	0.958%	0.837%	86.270%
District 65	41,750	35,636	4,749	732	633	830	24,615
	100.000%	85.356%	11.375%	1.753%	1.516%	1.988%	80.922%
District 66	41,425	30,307	9,044	1,510	564	878	23,784
	100.000%	73.161%	21.832%	3.645%	1.361%	2.119%	73.804%
District 67	41,219	14,524	24,332	1,654	709	1,015	18,008
	100.000%	35.236%	59.031%	4.013%	1.720%	2.462%	56.354%
District 68	43,168	31,836	9,556	1,274	502	960	24,263
	100.000%	73.749%	22.137%	2.951%	1.163%	2.224%	69.188%
District 69	42,607	37,505	3,583	1,009	510	909	27,011
	100.000%	88.025%	8.409%	2.368%	1.197%	2.133%	84.357%
District 70	43,717	32,683	8,952	1,419	663	1,234	25,226
	100.000%	74.760%	20.477%	3.246%	1.517%	2.823%	78.932%
District 71	42,802	40,066	2,097	158	481	485	25,096
	100.000%	93.608%	4.899%	0.369%	1.124%	1.133%	82.913%
District 72	41,710	18,426	22,853	130	301	465	25,868
	100.000%	44.176%	54.790%	0.312%	0.722%	1.115%	87.602%
District 73	44,437	32,184	11,516	283	454	643	23,186
	100.000%	72.426%	25.915%	0.637%	1.022%	1.447%	70.868%
District 74	43,891	38,115	5,108	153	515	699	26,397
	100.000%	86.840%	11.638%	0.349%	1.173%	1.593%	83.949%
District 75	42,478	28,903	13,216	107	252	338	24,049
	100.000%	68.042%	31.113%	0.252%	0.593%	0.796%	77.231%
District 76	42,939	36,025	5,452	626	836	1,261	24,541
	100.000%	83.898%	12.697%	1.458%	1.947%	2.937%	80.738%
District 77	43,549	38,972	3,713	282	582	901	26,784
	100.000%	89.490%	8.526%	0.648%	1.336%	2.069%	85.493%
District 78	44,240	39,958	2,474	743	1,065	2,459	26,641
	100.000%	90.321%	5.592%	1.679%	2.407%	5.558%	77.845%

District Summary

Total Population Ethnic Breakout

Name	Tot Pop	Tot White	Tot Black	Tot Asian	Tot Other	Tot Hispanic	Reg Total
District 79	42,408	35,737	3,116	1,875	1,680	4,421	23,819
	100.000%	84.269%	7.348%	4.421%	3.962%	10.425%	74.595%
District 80	43,165	35,595	3,442	2,093	2,035	4,254	22,543
	100.000%	82.463%	7.974%	4.849%	4.714%	9.855%	64.771%
District 81	41,531	38,511	1,310	935	775	1,985	26,114
	100.000%	92.728%	3.154%	2.251%	1.866%	4.780%	76.871%
District 82	41,753	35,257	4,262	933	1,301	2,733	23,533
	100.000%	84.442%	10.208%	2.235%	3.116%	6.546%	70.227%
District 83	40,537	23,042	14,835	1,629	1,031	1,660	22,584
	100.000%	56.842%	36.596%	4.019%	2.543%	4.095%	79.026%
District 84	40,812	31,588	6,346	1,528	1,350	2,353	22,848
	100.000%	77.399%	15.549%	3.744%	3.308%	5.765%	77.735%
District 85	42,542	24,902	13,621	2,371	1,648	2,673	23,084
	100.000%	58.535%	32.018%	5.573%	3.874%	6.283%	74.077%
District 86	41,623	23,389	14,827	1,797	1,610	2,930	20,073
	100.000%	56.192%	35.622%	4.317%	3.868%	7.039%	67.890%
District 87	42,057	9,201	30,312	1,553	991	1,715	20,548
	100.000%	21.877%	72.074%	3.693%	2.356%	4.078%	73.567%
District 88	44,114	41,555	1,960	108	491	518	26,268
	100.000%	94.199%	4.443%	0.245%	1.113%	1.174%	83.287%
District 89	41,572	25,268	14,714	811	779	1,605	25,546
	100.000%	60.781%	35.394%	1.951%	1.874%	3.861%	75.858%
District 90	41,523	34,901	5,261	472	889	1,096	25,388
	100.000%	84.052%	12.670%	1.137%	2.141%	2.640%	83.130%
District 91	40,633	12,087	27,556	386	604	1,228	21,509
	100.000%	29.747%	67.817%	0.950%	1.486%	3.022%	69.737%
District 92	44,404	23,878	16,958	963	2,605	5,843	21,375
	100.000%	53.774%	38.190%	2.169%	5.867%	13.159%	67.399%
District 93	40,969	12,555	27,103	554	757	1,376	20,822
	100.000%	30.645%	66.155%	1.352%	1.848%	3.359%	68.631%
District 94	40,457	33,240	5,304	908	1,005	2,245	25,100
	100.000%	82.161%	13.110%	2.244%	2.484%	5.549%	76.590%
District 95	43,154	10,356	31,257	577	964	1,882	19,227
	100.000%	23.998%	72.431%	1.337%	2.234%	4.361%	56.512%
District 96	41,996	4,024	37,399	81	492	942	21,939
	100.000%	9.582%	89.054%	0.193%	1.172%	2.243%	76.474%
District 97	41,480	5,860	34,741	268	611	1,050	26,092
	100.000%	14.127%	83.754%	0.646%	1.473%	2.531%	84.976%
District 98	43,049	38,424	3,450	390	785	1,048	25,018
	100.000%	89.256%	8.014%	0.906%	1.824%	2.434%	83.580%
District 99	41,268	1,835	39,127	77	229	495	23,574
	100.000%	4.447%	94.812%	0.187%	0.555%	1.199%	83.685%
District 100	40,534	4,053	35,129	970	382	660	20,750
	100.000%	9.999%	86.666%	2.393%	0.942%	1.628%	73.996%
District 101	40,874	4,077	36,132	229	436	623	20,726
	100.000%	9.975%	88.398%	0.560%	1.067%	1.524%	72.856%
District 102	40,589	11,148	27,295	1,202	944	1,655	20,694
	100.000%	27.466%	67.247%	2.961%	2.326%	4.077%	73.628%
District 103	41,587	26,529	9,079	5,303	676	1,927	22,105
	100.000%	63.792%	21.831%	12.752%	1.626%	4.634%	72.983%
District 104	40,597	35,107	3,800	847	843	1,839	24,442
	100.000%	86.477%	9.360%	2.086%	2.077%	4.530%	81.680%

District Summary

Total Population Ethnic Breakout

Name	Tot Pop	Tot White	Tot Black	Tot Asian	Tot Other	Tot Hispanic	Reg Total
District 105	40,953	31,672	7,103	941	1,237	742	24,506
	100.000%	77.337%	17.344%	2.298%	3.021%	1.812%	84.338%
Grand Total:	4,468,976	2,856,161	1,468,317	62,404	82,094	107,738	2,524,235
	100.000%	63.911%	32.856%	1.396%	1.837%	2.411%	77.688%

District Summary

VOT REG ALL

Name	Reg Total	Reg White	Reg Black	Reg Other	Reg Dem Total	Reg Rep Total	Reg Oth Total
District 1	22,766	17,542	4,724	500	12,285	5,982	4,499
	73.370%	77.054%	20.750%	2.196%	53.962%	26.276%	19.762%
District 2	19,699	4,431	14,703	565	14,395	1,866	3,438
	66.456%	22.494%	74.638%	2.868%	73.075%	9.473%	17.453%
District 3	20,651	4,059	16,044	548	15,475	1,683	3,493
	71.029%	19.655%	77.691%	2.654%	74.936%	8.150%	16.914%
District 4	22,312	8,225	13,483	604	15,211	3,696	3,405
	75.198%	36.864%	60.429%	2.707%	68.174%	16.565%	15.261%
District 5	23,010	20,043	2,269	698	9,744	9,155	4,111
	73.750%	87.106%	9.861%	3.033%	42.347%	39.787%	17.866%
District 6	24,891	21,957	2,159	775	10,158	10,354	4,379
	77.002%	88.213%	8.674%	3.114%	40.810%	41.597%	17.593%
District 7	24,565	17,439	6,414	712	14,709	5,871	3,985
	81.736%	70.991%	26.110%	2.898%	59.878%	23.900%	16.222%
District 8	22,839	19,497	2,472	870	9,504	8,568	4,767
	72.314%	85.367%	10.824%	3.809%	41.613%	37.515%	20.872%
District 9	21,055	16,088	4,230	737	10,226	6,107	4,722
	73.283%	76.409%	20.090%	3.500%	48.568%	29.005%	22.427%
District 10	24,104	16,683	7,192	229	14,957	4,428	4,719
	77.440%	69.213%	29.837%	0.950%	62.052%	18.370%	19.578%
District 11	21,884	9,603	11,869	412	15,228	3,382	3,274
	64.395%	43.881%	54.236%	1.883%	69.585%	15.454%	14.961%
District 12	25,975	20,581	4,943	451	14,378	7,572	4,025
	81.662%	79.234%	19.030%	1.736%	55.353%	29.151%	15.496%
District 13	24,205	18,218	5,766	221	15,763	5,058	3,384
	79.283%	75.265%	23.822%	0.913%	65.123%	20.897%	13.981%
District 14	26,940	19,018	7,652	270	15,690	6,720	4,531
	85.129%	70.594%	28.404%	1.002%	58.241%	24.944%	16.819%
District 15	25,633	22,977	1,989	667	10,783	8,846	6,005
	78.061%	89.638%	7.760%	2.602%	42.067%	34.510%	23.427%
District 16	23,774	20,968	2,310	496	9,752	9,897	4,123
	74.403%	88.197%	9.716%	2.086%	41.020%	41.630%	17.342%
District 17	22,991	2,856	19,611	524	17,559	1,343	4,089
	86.112%	12.422%	85.299%	2.279%	76.373%	5.841%	17.785%
District 18	23,453	15,626	7,721	106	17,433	3,074	2,946
	75.910%	66.627%	32.921%	0.452%	74.332%	13.107%	12.561%
District 19	24,298	16,683	7,427	188	14,875	5,747	3,676
	78.900%	68.660%	30.566%	0.774%	61.219%	23.652%	15.129%
District 20	27,218	20,464	6,652	102	19,486	4,740	2,992
	86.723%	75.186%	24.440%	0.375%	71.592%	17.415%	10.993%
District 21	25,013	11,519	13,342	152	18,607	3,561	2,845
	86.685%	46.052%	53.340%	0.608%	74.389%	14.237%	11.374%
District 22	25,744	21,725	3,775	244	17,397	4,790	3,557
	83.349%	84.389%	14.664%	0.948%	67.577%	18.606%	13.817%
District 23	23,305	14,246	8,453	606	15,381	4,087	3,837
	76.848%	61.129%	36.271%	2.600%	65.999%	17.537%	16.464%
District 24	26,409	21,034	4,754	621	18,136	4,566	3,707
	81.638%	79.647%	18.001%	2.351%	68.674%	17.290%	14.037%
District 25	23,980	19,832	3,573	575	13,673	6,453	3,854
	74.322%	82.702%	14.900%	2.398%	57.018%	26.910%	16.072%
District 26	22,578	8,964	13,224	390	15,756	3,237	3,585
	74.199%	39.702%	58.570%	1.727%	69.785%	14.337%	15.878%

District Summary

VOT REG ALL

Name	Reg Total	Reg White	Reg Black	Reg Other	Reg Dem Total	Reg Rep Total	Reg Oth Total
District 27	25,753	23,568	1,739	446	13,979	7,317	4,457
	78.726%	91.516%	6.753%	1.732%	54.281%	28.412%	17.307%
District 28	23,201	17,249	5,787	165	17,883	2,785	2,533
	76.389%	74.346%	24.943%	0.711%	77.079%	12.004%	10.918%
District 29	21,884	5,063	16,104	717	16,432	1,849	3,603
	76.320%	23.136%	73.588%	3.276%	75.087%	8.449%	16.464%
District 30	17,586	12,915	3,774	897	10,107	3,617	3,862
	55.553%	73.439%	21.460%	5.101%	57.472%	20.567%	21.961%
District 31	25,435	23,211	1,560	664	12,175	8,110	5,150
	84.919%	91.256%	6.133%	2.611%	47.867%	31.885%	20.248%
District 32	21,813	19,005	2,338	470	15,470	3,183	3,160
	69.386%	87.127%	10.718%	2.155%	70.921%	14.592%	14.487%
District 33	26,828	24,279	1,920	629	16,251	5,270	5,307
	83.172%	90.499%	7.157%	2.345%	60.575%	19.644%	19.782%
District 34	27,403	8,154	18,429	820	20,288	2,564	4,551
	85.742%	29.756%	67.252%	2.992%	74.036%	9.357%	16.608%
District 35	25,976	22,871	2,383	722	14,546	6,000	5,430
	81.043%	88.047%	9.174%	2.779%	55.998%	23.098%	20.904%
District 36	27,167	25,152	1,220	795	14,173	7,738	5,256
	82.095%	92.583%	4.491%	2.926%	52.170%	28.483%	19.347%
District 37	27,039	22,403	4,193	443	17,783	4,235	5,021
	86.805%	82.854%	15.507%	1.638%	65.768%	15.663%	18.569%
District 38	27,261	19,827	7,315	119	21,831	3,307	2,123
	87.344%	72.730%	26.833%	0.437%	80.081%	12.131%	7.788%
District 39	25,868	19,951	5,344	573	16,118	5,314	4,436
	83.182%	77.126%	20.659%	2.215%	62.309%	20.543%	17.149%
District 40	24,087	10,267	13,561	259	18,385	2,970	2,732
	79.202%	42.625%	56.300%	1.075%	76.327%	12.330%	11.342%
District 41	24,591	19,716	4,629	246	17,455	4,064	3,072
	80.676%	80.176%	18.824%	1.000%	70.981%	16.526%	12.492%
District 42	24,391	19,128	5,033	230	18,032	3,544	2,815
	84.930%	78.422%	20.635%	0.943%	73.929%	14.530%	11.541%
District 43	23,835	21,043	1,935	857	9,518	9,243	5,074
	81.011%	88.286%	8.118%	3.596%	39.933%	38.779%	21.288%
District 44	23,077	7,995	14,516	566	15,886	2,866	4,325
	76.202%	34.645%	62.902%	2.453%	68.839%	12.419%	18.742%
District 45	24,643	22,266	1,607	770	11,344	8,351	4,948
	76.650%	90.354%	6.521%	3.125%	46.033%	33.888%	20.079%
District 46	27,395	18,283	8,812	300	20,641	3,645	3,109
	88.234%	66.738%	32.166%	1.095%	75.346%	13.305%	11.349%
District 47	27,621	23,865	3,420	336	20,119	3,349	4,153
	86.489%	86.402%	12.382%	1.216%	72.840%	12.125%	15.036%
District 48	23,914	16,535	7,010	369	15,264	5,013	3,637
	83.324%	69.144%	29.313%	1.543%	63.829%	20.963%	15.209%
District 49	25,883	19,726	5,704	453	17,607	4,262	4,014
	84.926%	76.212%	22.038%	1.750%	68.025%	16.466%	15.508%
District 50	24,048	15,324	8,301	423	15,807	4,552	3,689
	84.894%	63.723%	34.518%	1.759%	65.731%	18.929%	15.340%
District 51	24,284	17,691	5,675	918	15,901	4,027	4,356
	76.688%	72.850%	23.369%	3.780%	65.479%	16.583%	17.938%
District 52	24,499	21,288	2,405	806	12,146	7,120	5,233
	75.841%	86.893%	9.817%	3.290%	49.578%	29.062%	21.360%

District Summary

VOT REG ALL

Name	Reg Total	Reg White	Reg Black	Reg Other	Reg Dem Total	Reg Rep Total	Reg Oth Total
District 53	21,706	16,677	3,807	1,222	12,954	3,987	4,765
	70.013%	76.831%	17.539%	5.630%	59.679%	18.368%	21.952%
District 54	24,666	23,227	1,062	377	18,253	3,093	3,320
	77.988%	94.166%	4.306%	1.528%	74.001%	12.540%	13.460%
District 55	23,689	19,566	3,775	348	15,331	4,430	3,928
	74.388%	82.595%	15.936%	1.469%	64.718%	18.701%	16.582%
District 56	24,919	17,636	6,642	641	15,007	5,437	4,475
	80.691%	70.773%	26.654%	2.572%	60.223%	21.819%	17.958%
District 57	25,642	15,795	9,259	588	17,534	4,136	3,972
	84.438%	61.598%	36.109%	2.293%	68.380%	16.130%	15.490%
District 58	26,038	9,065	16,759	214	21,633	1,976	2,429
	83.274%	34.815%	64.364%	0.822%	83.082%	7.589%	9.329%
District 59	23,790	21,072	1,995	723	12,510	6,490	4,790
	78.536%	88.575%	8.386%	3.039%	52.585%	27.280%	20.135%
District 60	27,284	17,335	9,861	88	21,704	2,888	2,692
	90.488%	63.535%	36.142%	0.323%	79.548%	10.585%	9.867%
District 61	22,466	6,368	15,276	822	15,641	2,578	4,247
	71.653%	28.345%	67.996%	3.659%	69.621%	11.475%	18.904%
District 62	25,530	18,434	6,470	626	15,609	5,750	4,171
	78.869%	72.205%	25.343%	2.452%	61.140%	22.523%	16.338%
District 63	23,348	6,737	16,210	401	17,737	2,418	3,193
	74.288%	28.855%	69.428%	1.717%	75.968%	10.356%	13.676%
District 64	24,687	21,196	3,039	452	13,637	6,372	4,678
	86.270%	85.859%	12.310%	1.831%	55.240%	25.811%	18.949%
District 65	24,615	22,122	1,800	693	11,340	8,553	4,722
	80.922%	89.872%	7.313%	2.815%	46.069%	34.747%	19.183%
District 66	23,784	20,014	2,882	888	10,510	9,009	4,265
	73.804%	84.149%	12.117%	3.734%	44.189%	37.878%	17.932%
District 67	18,008	4,855	12,322	831	11,881	2,467	3,660
	56.354%	26.960%	68.425%	4.615%	65.976%	13.699%	20.324%
District 68	24,263	18,198	5,199	866	11,175	8,740	4,348
	69.188%	75.003%	21.428%	3.569%	46.058%	36.022%	17.920%
District 69	27,011	24,699	1,412	900	9,390	12,300	5,321
	84.357%	91.441%	5.227%	3.332%	34.764%	45.537%	19.699%
District 70	25,226	20,821	3,203	1,202	9,667	10,411	5,148
	78.932%	82.538%	12.697%	4.765%	38.322%	41.271%	20.408%
District 71	25,096	23,318	1,174	604	12,315	7,534	5,247
	82.913%	92.915%	4.678%	2.407%	49.072%	30.021%	20.908%
District 72	25,868	12,310	12,749	809	19,141	3,418	3,309
	87.602%	47.588%	49.285%	3.127%	73.995%	13.213%	12.792%
District 73	23,186	17,664	4,864	658	12,618	5,815	4,753
	70.868%	76.184%	20.978%	2.838%	54.421%	25.080%	20.499%
District 74	26,397	23,021	2,674	702	13,964	7,454	4,979
	83.949%	87.211%	10.130%	2.659%	52.900%	28.238%	18.862%
District 75	24,049	17,450	6,360	239	17,049	3,924	3,076
	77.231%	72.560%	26.446%	0.994%	70.893%	16.317%	12.791%
District 76	24,541	20,713	2,564	1,264	9,484	9,411	5,646
	80.738%	84.402%	10.448%	5.151%	38.646%	38.348%	23.006%
District 77	26,784	24,014	1,828	942	9,997	11,425	5,362
	85.493%	89.658%	6.825%	3.517%	37.325%	42.656%	20.019%
District 78	26,641	24,808	694	1,139	11,880	9,821	4,940
	77.845%	93.120%	2.605%	4.275%	44.593%	36.864%	18.543%

District Summary

VOT REG ALL

Name	Reg Total	Reg White	Reg Black	Reg Other	Reg Dem Total	Reg Rep Total	Reg Oth Total
District 79	23,819	21,021	975	1,823	8,672	10,693	4,454
	74.595%	88.253%	4.093%	7.654%	36.408%	44.893%	18.699%
District 80	22,543	20,344	715	1,484	9,177	9,188	4,178
	64.771%	90.245%	3.172%	6.583%	40.709%	40.758%	18.533%
District 81	26,114	24,632	391	1,091	10,650	11,144	4,320
	76.871%	94.325%	1.497%	4.178%	40.783%	42.674%	16.543%
District 82	23,533	20,698	1,562	1,273	10,701	8,295	4,537
	70.227%	87.953%	6.637%	5.409%	45.472%	35.248%	19.279%
District 83	22,584	13,628	7,643	1,313	13,888	3,368	5,328
	79.026%	60.344%	33.843%	5.814%	61.495%	14.913%	23.592%
District 84	22,848	18,526	2,762	1,560	11,937	5,447	5,464
	77.735%	81.084%	12.089%	6.828%	52.245%	23.840%	23.915%
District 85	23,084	14,872	6,263	1,949	12,339	5,576	5,169
	74.077%	64.426%	27.131%	8.443%	53.453%	24.155%	22.392%
District 86	20,073	13,699	4,724	1,650	9,608	5,947	4,518
	67.890%	68.246%	23.534%	8.220%	47.865%	29.627%	22.508%
District 87	20,548	4,868	14,257	1,423	13,865	1,990	4,693
	73.567%	23.691%	69.384%	6.925%	67.476%	9.685%	22.839%
District 88	26,268	24,429	1,314	525	16,376	5,022	4,870
	83.287%	92.999%	5.002%	1.999%	62.342%	19.118%	18.540%
District 89	25,546	15,847	7,998	1,701	13,927	6,108	5,511
	75.858%	62.033%	31.308%	6.659%	54.517%	23.910%	21.573%
District 90	25,388	21,510	2,623	1,255	9,970	9,544	5,874
	83.130%	84.725%	10.332%	4.943%	39.271%	37.593%	23.137%
District 91	21,509	6,610	13,797	1,102	14,789	2,459	4,261
	69.737%	30.731%	64.145%	5.123%	68.757%	11.432%	19.810%
District 92	21,375	12,169	7,348	1,858	11,860	4,924	4,591
	67.399%	56.931%	34.377%	8.692%	55.485%	23.036%	21.478%
District 93	20,822	7,293	12,143	1,386	13,934	2,201	4,687
	68.631%	35.025%	58.318%	6.656%	66.920%	10.571%	22.510%
District 94	25,100	21,297	2,457	1,346	12,608	8,195	4,297
	76.590%	84.849%	9.789%	5.363%	50.231%	32.649%	17.120%
District 95	19,227	5,015	13,167	1,045	13,996	1,697	3,534
	56.512%	26.083%	68.482%	5.435%	72.793%	8.826%	18.380%
District 96	21,939	2,453	18,739	747	17,527	1,150	3,262
	76.474%	11.181%	85.414%	3.405%	79.890%	5.242%	14.868%
District 97	26,092	3,731	21,509	852	21,302	1,555	3,235
	84.976%	14.299%	82.435%	3.265%	81.642%	5.960%	12.398%
District 98	25,018	22,185	1,627	1,206	7,708	12,083	5,227
	83.580%	88.676%	6.503%	4.821%	30.810%	48.297%	20.893%
District 99	23,574	995	21,975	604	19,407	879	3,288
	83.685%	4.221%	93.217%	2.562%	82.324%	3.729%	13.948%
District 100	20,750	3,009	16,985	756	16,715	1,339	2,696
	73.996%	14.501%	81.855%	3.643%	80.554%	6.453%	12.993%
District 101	20,726	2,940	17,152	634	16,756	1,240	2,730
	72.856%	14.185%	82.756%	3.059%	80.845%	5.983%	13.172%
District 102	20,694	6,465	13,056	1,173	14,283	2,789	3,622
	73.628%	31.241%	63.091%	5.668%	69.020%	13.477%	17.503%
District 103	22,105	16,569	3,753	1,783	14,234	3,910	3,961
	72.983%	74.956%	16.978%	8.066%	64.393%	17.688%	17.919%
District 104	24,442	22,459	1,386	597	15,647	4,948	3,847
	81.680%	91.887%	5.671%	2.443%	64.017%	20.244%	15.739%

District Summary

VOT REG ALL

Name	Reg Total	Reg White	Reg Black	Reg Other	Reg Dem Total	Reg Rep Total	Reg Oth Total
District 105	24,506	19,530	3,584	1,392	14,847	5,601	4,058
	84.338%	79.695%	14.625%	5.680%	60.585%	22.856%	16.559%
Grand Total:	2,524,235	1,720,962	725,250	78,023	1,526,386	562,207	435,642
	77.688%	68.178%	28.731%	3.091%	60.469%	22.272%	17.258%

Assigned Districts Splits

ALL POP & REG

	Tot Pop	Tot White	Tot Black	Tot Asian	Tot Other	Reg Total	Reg White	Reg Black	Reg Other
District 1									
* Bossier	2,614	1,673	906	6	29	1,659	1,111	502	46
* Caddo	39,719	29,078	9,914	121	606	21,107	16,431	4,222	454
District 1	42,333	30,751	10,820	127	635	22,766	17,542	4,724	500
	100.000%	72.641%	25.559%	0.300%	1.500%	73.370%	77.054%	20.750%	2.196%
District 2									
* Bossier	4,368	1,697	2,463	43	165	1,938	855	1,001	82
* Caddo	36,749	7,811	28,375	166	397	17,761	3,576	13,702	483
District 2	41,117	9,508	30,838	209	562	19,699	4,431	14,703	565
	100.000%	23.124%	75.001%	0.508%	1.367%	66.456%	22.494%	74.638%	2.868%
District 3									
* Caddo	42,654	7,035	35,142	177	300	20,651	4,059	16,044	548
District 3	42,654	7,035	35,142	177	300	20,651	4,059	16,044	548
	100.000%	16.493%	82.389%	0.415%	0.703%	71.029%	19.655%	77.691%	2.654%
District 4									
* Caddo	41,163	13,516	27,043	184	420	22,312	8,225	13,483	604
District 4	41,163	13,516	27,043	184	420	22,312	8,225	13,483	604
	100.000%	32.835%	65.697%	0.447%	1.020%	75.198%	36.864%	60.429%	2.707%
District 5									
* Caddo	40,920	32,791	6,725	712	692	23,010	20,043	2,269	698
District 5	40,920	32,791	6,725	712	692	23,010	20,043	2,269	698
	100.000%	80.134%	16.435%	1.740%	1.691%	73.750%	87.106%	9.861%	3.033%
District 6									
* Bossier	7,483	5,847	1,173	244	219	3,645	2,919	509	217
* Caddo	34,371	28,868	4,450	554	499	21,246	19,038	1,650	558
District 6	41,854	34,715	5,623	798	718	24,891	21,957	2,159	775
	100.000%	82.943%	13.435%	1.907%	1.715%	77.002%	88.213%	8.674%	3.114%
District 7									
* Caddo	16,585	14,325	1,807	116	337	9,732	8,556	914	262
* De Soto	24,981	14,070	10,502	37	372	14,833	8,883	5,500	450
District 7	41,566	28,395	12,309	153	709	24,565	17,439	6,414	712
	100.000%	68.313%	29.613%	0.368%	1.706%	81.736%	70.991%	26.110%	2.898%
District 8									
* Bossier	43,176	33,935	7,340	878	1,023	22,839	19,497	2,472	870
District 8	43,176	33,935	7,340	878	1,023	22,839	19,497	2,472	870
	100.000%	78.597%	17.000%	2.034%	2.369%	72.314%	85.367%	10.824%	3.809%
District 9									
* Bossier	40,669	30,251	9,065	431	922	21,055	16,088	4,230	737
District 9	40,669	30,251	9,065	431	922	21,055	16,088	4,230	737
	100.000%	74.383%	22.290%	1.060%	2.267%	73.283%	76.409%	20.090%	3.500%
District 10									
Webster	41,831	27,405	13,841	122	463	24,104	16,683	7,192	229
District 10	41,831	27,405	13,841	122	463	24,104	16,683	7,192	229
	100.000%	65.514%	33.088%	0.292%	1.107%	77.440%	69.213%	29.837%	0.950%
District 11									
* Bienville	4,444	1,387	3,024	4	29	2,687	987	1,691	9
Claiborne	16,851	8,728	8,018	36	69	8,631	5,062	3,543	26
* Lincoln	23,052	8,253	14,216	336	247	10,566	3,554	6,635	377
District 11	44,347	18,368	25,258	376	345	21,884	9,603	11,869	412
	100.000%	41.419%	56.955%	0.848%	0.778%	64.395%	43.881%	54.236%	1.883%
District 12									
* Lincoln	19,457	16,156	2,863	245	193	11,374	9,875	1,193	306
Union	22,803	15,914	6,414	69	406	14,601	10,706	3,750	145
District 12	42,260	32,070	9,277	314	599	25,975	20,581	4,943	451
	100.000%	75.887%	21.952%	0.743%	1.417%	81.662%	79.234%	19.030%	1.736%

Assigned Districts Splits

ALL POP & REG

	Tot Pop	Tot White	Tot Black	Tot Asian	Tot Other	Reg Total	Reg White	Reg Black	Reg Other
District 13									
* Bienville	11,308	7,264	3,913	27	104	6,682	4,392	2,260	30
Jackson	15,397	10,934	4,312	43	108	9,804	6,933	2,781	90
* Ouachita	7,641	7,068	456	30	87	4,609	4,191	326	92
* Winn	6,500	4,614	1,802	14	70	3,110	2,702	399	9
District 13	40,846	29,880	10,483	114	369	24,205	18,218	5,766	221
	100.000%	73.153%	25.665%	0.279%	0.903%	79.283%	75.265%	23.822%	0.913%
District 14									
* East Carroll	1,633	1,139	453	26	15	1,151	864	273	14
* Morehouse	27,767	15,831	11,744	67	125	16,970	10,308	6,502	160
* Ouachita	7,435	6,873	457	36	69	4,586	4,313	187	86
* West Carroll	6,693	5,564	1,043	12	74	4,233	3,533	690	10
District 14	43,528	29,407	13,697	141	283	26,940	19,018	7,652	270
	100.000%	67.559%	31.467%	0.324%	0.650%	85.129%	70.594%	28.404%	1.002%
District 15									
* Ouachita	44,655	39,510	4,433	199	513	25,633	22,977	1,989	667
District 15	44,655	39,510	4,433	199	513	25,633	22,977	1,989	667
	100.000%	88.478%	9.927%	0.446%	1.149%	78.061%	89.638%	7.760%	2.602%
District 16									
* Ouachita	40,911	33,131	6,752	626	402	23,774	20,968	2,310	496
District 16	40,911	33,131	6,752	626	402	23,774	20,968	2,310	496
	100.000%	80.983%	16.504%	1.530%	0.983%	74.403%	88.197%	9.716%	2.086%
District 17									
* Ouachita	41,428	5,127	35,908	196	197	22,991	2,856	19,611	524
District 17	41,428	5,127	35,908	196	197	22,991	2,856	19,611	524
	100.000%	12.376%	86.676%	0.473%	0.476%	86.112%	12.422%	85.299%	2.279%
District 18									
Pointe Coupee	22,763	13,865	8,670	68	160	15,606	9,799	5,750	57
* West Baton Rouge	11,915	8,349	3,406	26	134	7,349	5,420	1,887	42
* West Feliciana	5,990	1,942	4,022	6	20	498	407	84	7
District 18	40,668	24,156	16,098	100	314	23,453	15,626	7,721	106
	100.000%	59.398%	39.584%	0.246%	0.772%	75.910%	66.627%	32.921%	0.452%
District 19									
* East Carroll	1,007	605	390	0	12	549	375	167	7
* Madison	5,794	3,800	1,826	19	149	3,214	2,423	768	23
* Morehouse	3,254	1,466	1,777	3	8	1,911	910	988	13
* Ouachita	5,180	3,238	1,836	18	88	2,648	1,917	659	72
Richland	20,981	12,791	8,010	60	120	12,822	8,356	4,412	54
* West Carroll	5,621	4,274	1,284	10	53	3,154	2,702	433	19
District 19	41,837	26,174	15,123	110	430	24,298	16,683	7,427	188
	100.000%	62.562%	36.147%	0.263%	1.028%	78.900%	68.660%	30.566%	0.774%
District 20									
Caldwell	10,560	8,493	1,901	21	145	6,513	5,527	951	35
Catahoula	10,920	7,838	2,982	16	84	7,633	5,640	1,964	29
Franklin	21,263	14,281	6,762	53	167	13,072	9,297	3,737	38
District 20	42,743	30,612	11,645	90	396	27,218	20,464	6,652	102
	100.000%	71.619%	27.244%	0.211%	0.926%	86.723%	75.186%	24.440%	0.375%
District 21									
Concordia	20,247	12,300	7,702	56	189	11,970	7,745	4,132	93
* East Carroll	6,781	1,233	5,510	14	24	3,994	735	3,238	21
* Madison	7,934	1,397	6,487	5	45	4,486	867	3,593	26
Tensas	6,618	2,874	3,699	13	32	4,563	2,172	2,379	12
District 21	41,580	17,804	23,398	88	290	25,013	11,519	13,342	152
	100.000%	42.819%	56.272%	0.212%	0.697%	86.685%	46.052%	53.340%	0.608%
District 22									

Assigned Districts Splits

ALL POP & REG

	Tot Pop	Tot White	Tot Black	Tot Asian	Tot Other	Reg Total	Reg White	Reg Black	Reg Other
Grant	18,698	15,973	2,264	54	407	11,251	9,751	1,372	128
La Salle	14,282	12,301	1,754	35	192	8,895	8,094	700	101
* Rapides	1,196	1,169	11	3	13	732	726	1	5
* Winn	8,504	5,208	3,207	15	74	4,866	3,154	1,702	10
District 22	42,680	34,651	7,236	107	686	25,744	21,725	3,775	244
	100.000%	81.188%	16.954%	0.251%	1.607%	83.349%	84.389%	14.664%	0.948%
District 23									
Natchitoches	39,080	22,608	15,205	198	1,069	22,128	13,360	8,164	604
* Winn	1,890	1,373	468	8	41	1,177	886	289	2
District 23	40,970	23,981	15,673	206	1,110	23,305	14,246	8,453	606
	100.000%	58.533%	38.255%	0.503%	2.709%	76.848%	61.129%	36.271%	2.600%
District 24									
* De Soto	513	199	312	0	2	287	141	142	4
Red River	9,622	5,568	3,963	21	70	6,209	3,803	2,390	16
Sabine	23,459	17,048	4,020	66	2,325	13,641	11,107	2,102	432
* Vernon	11,034	10,019	455	152	408	6,272	5,983	120	169
District 24	44,628	32,834	8,750	239	2,805	26,409	21,034	4,754	621
	100.000%	73.573%	19.607%	0.536%	6.285%	81.638%	79.647%	18.001%	2.351%
District 25									
* Rapides	37,997	29,145	7,733	409	710	22,033	17,996	3,524	513
* Vernon	6,160	4,664	911	132	453	1,947	1,836	49	62
District 25	44,157	33,809	8,644	541	1,163	23,980	19,832	3,573	575
	100.000%	76.565%	19.576%	1.225%	2.634%	74.322%	82.702%	14.900%	2.398%
District 26									
* Rapides	42,886	14,676	27,216	550	444	22,578	8,964	13,224	390
District 26	42,886	14,676	27,216	550	444	22,578	8,964	13,224	390
	100.000%	34.221%	63.461%	1.282%	1.035%	74.199%	39.702%	58.570%	1.727%
District 27									
* Rapides	44,258	39,034	3,944	275	1,005	25,753	23,568	1,739	446
District 27	44,258	39,034	3,944	275	1,005	25,753	23,568	1,739	446
	100.000%	88.196%	8.911%	0.621%	2.271%	78.726%	91.516%	6.753%	1.732%
District 28									
Avoyelles	41,481	28,402	12,362	93	624	23,201	17,249	5,787	165
District 28	41,481	28,402	12,362	93	624	23,201	17,249	5,787	165
	100.000%	68.470%	29.802%	0.224%	1.504%	76.389%	74.346%	24.943%	0.711%
District 29									
* East Baton Rouge	39,649	6,580	31,669	1,154	246	19,645	4,588	14,343	714
* West Baton Rouge	3,093	734	2,318	21	20	2,239	475	1,761	3
District 29	42,742	7,314	33,987	1,175	266	21,884	5,063	16,104	717
	100.000%	17.112%	79.517%	2.749%	0.622%	76.320%	23.136%	73.588%	3.276%
District 30									
* Beauregard	11,734	7,912	3,420	168	234	6,459	4,449	1,764	246
* Vernon	32,736	21,579	8,144	898	2,115	11,127	8,466	2,010	651
District 30	44,470	29,491	11,564	1,066	2,349	17,586	12,915	3,774	897
	100.000%	66.317%	26.004%	2.397%	5.282%	55.553%	73.439%	21.460%	5.101%
District 31									
* Lafayette	35,286	31,605	2,775	478	428	20,850	18,993	1,251	606
* Vermilion	7,333	6,659	578	36	60	4,585	4,218	309	58
District 31	42,619	38,264	3,353	514	488	25,435	23,211	1,560	664
	100.000%	89.782%	7.867%	1.206%	1.145%	84.919%	91.256%	6.133%	2.611%
District 32									
Allen	25,440	18,291	6,331	169	649	11,898	9,480	2,131	287
* Beauregard	14,500	13,699	499	35	267	8,201	7,837	206	158
* Vernon	2,601	2,455	8	5	133	1,714	1,688	1	25

Assigned Districts Splits

ALL POP & REG

	Tot Pop	Tot White	Tot Black	Tot Asian	Tot Other	Reg Total	Reg White	Reg Black	Reg Other
District 32	42,541	34,445	6,838	209	1,049	21,813	19,005	2,338	470
	100.000%	80.969%	16.074%	0.491%	2.466%	69.386%	87.127%	10.718%	2.155%
District 33									
* Beauregard	802	763	22	0	17	457	433	21	3
* Calcasieu	43,654	39,291	3,671	156	536	26,371	23,846	1,899	626
District 33	44,456	40,054	3,693	156	553	26,828	24,279	1,920	629
	100.000%	90.098%	8.307%	0.351%	1.244%	83.172%	90.499%	7.157%	2.345%
District 34									
* Calcasieu	44,231	12,468	31,011	271	481	27,403	8,154	18,429	820
District 34	44,231	12,468	31,011	271	481	27,403	8,154	18,429	820
	100.000%	28.188%	70.111%	0.613%	1.087%	85.742%	29.756%	67.252%	2.992%
District 35									
* Beauregard	5,950	5,416	434	53	47	2,862	2,787	19	56
* Calcasieu	38,407	32,631	5,035	250	491	23,114	20,084	2,364	666
District 35	44,357	38,047	5,469	303	538	25,976	22,871	2,383	722
	100.000%	85.775%	12.330%	0.683%	1.213%	81.043%	88.047%	9.174%	2.779%
District 36									
* Calcasieu	44,542	40,026	3,284	662	570	27,167	25,152	1,220	795
District 36	44,542	40,026	3,284	662	570	27,167	25,152	1,220	795
	100.000%	89.861%	7.373%	1.486%	1.280%	82.095%	92.583%	4.491%	2.926%
District 37									
* Calcasieu	12,743	10,691	1,781	72	199	8,010	6,847	968	195
Jefferson Davis	31,435	25,337	5,718	84	296	19,029	15,556	3,225	248
District 37	44,178	36,028	7,499	156	495	27,039	22,403	4,193	443
	100.000%	81.552%	16.975%	0.353%	1.120%	86.805%	82.854%	15.507%	1.638%
District 38									
* Evangeline	30,842	21,490	9,097	58	197	19,237	13,881	5,287	69
* St. Landry	13,647	10,061	3,464	45	77	8,024	5,946	2,028	50
District 38	44,489	31,551	12,561	103	274	27,261	19,827	7,315	119
	100.000%	70.919%	28.234%	0.232%	0.616%	87.344%	72.730%	26.833%	0.437%
District 39									
* Lafayette	28,411	20,460	7,474	170	307	16,375	12,359	3,560	456
* St. Landry	12,800	10,400	2,278	35	87	7,683	6,238	1,348	97
* St. Martin	2,852	2,219	603	10	20	1,810	1,354	436	20
District 39	44,063	33,079	10,355	215	414	25,868	19,951	5,344	573
	100.000%	75.072%	23.500%	0.488%	0.940%	83.182%	77.126%	20.659%	2.215%
District 40									
* St. Landry	43,388	16,963	25,994	115	316	24,087	10,267	13,561	259
District 40	43,388	16,963	25,994	115	316	24,087	10,267	13,561	259
	100.000%	39.096%	59.911%	0.265%	0.728%	79.202%	42.625%	56.300%	1.075%
District 41									
* Acadia	20,764	18,035	2,550	29	150	12,310	10,721	1,461	128
* Evangeline	4,592	3,461	1,102	13	16	2,050	1,731	314	5
* St. Landry	17,865	12,131	5,551	36	147	10,231	7,264	2,854	113
District 41	43,221	33,627	9,203	78	313	24,591	19,716	4,629	246
	100.000%	77.802%	21.293%	0.180%	0.724%	80.676%	80.176%	18.824%	1.000%
District 42									
* Acadia	38,097	29,486	8,283	94	234	22,760	17,884	4,669	207
* Lafayette	2,680	2,092	563	7	18	1,631	1,244	364	23
District 42	40,777	31,578	8,846	101	252	24,391	19,128	5,033	230
	100.000%	77.441%	21.694%	0.248%	0.618%	84.930%	78.422%	20.635%	0.943%
District 43									
* Lafayette	40,762	35,614	4,131	480	537	23,835	21,043	1,935	857

Assigned Districts Splits

ALL POP & REG

	Tot Pop	Tot White	Tot Black	Tot Asian	Tot Other	Reg Total	Reg White	Reg Black	Reg Other
* Lafourche	43,703	33,625	9,241	277	560	23,689	19,566	3,775	348
District 55	43,703	33,625	9,241	277	560	23,689	19,566	3,775	348
	100.000%	76.940%	21.145%	0.634%	1.281%	74.388%	82.595%	15.936%	1.469%
District 56									
* St. Charles	38,922	26,436	11,670	256	560	21,953	15,560	5,813	580
* St. John the Baptist	5,108	3,645	1,333	28	102	2,966	2,076	829	61
District 56	44,030	30,081	13,003	284	662	24,919	17,636	6,642	641
	100.000%	68.319%	29.532%	0.645%	1.504%	80.691%	70.773%	26.654%	2.572%
District 57									
* St. James	9,759	6,428	3,260	12	59	6,177	4,306	1,834	37
* St. John the Baptist	34,462	18,573	15,039	266	584	19,465	11,489	7,425	551
District 57	44,221	25,001	18,299	278	643	25,642	15,795	9,259	588
	100.000%	56.536%	41.381%	0.629%	1.454%	84.438%	61.598%	36.109%	2.293%
District 58									
* Ascension	15,833	5,300	10,328	45	160	9,434	3,519	5,783	132
* Assumption	2,623	1,063	1,549	1	10	1,683	731	950	2
* Iberville	10,299	3,430	6,799	28	42	4,522	1,678	2,811	33
* St. James	11,457	4,178	7,252	3	24	7,642	2,859	4,750	33
* St. John the Baptist	3,474	415	3,044	1	14	2,757	278	2,465	14
District 58	43,686	14,386	28,972	78	250	26,038	9,065	16,759	214
	100.000%	32.930%	66.319%	0.179%	0.572%	83.274%	34.815%	64.364%	0.822%
District 59									
* Ascension	43,377	37,604	4,606	217	950	23,790	21,072	1,995	723
District 59	43,377	37,604	4,606	217	950	23,790	21,072	1,995	723
	100.000%	86.691%	10.619%	0.500%	2.190%	78.536%	88.575%	8.386%	3.039%
District 60									
* Ascension	844	573	246	0	25	572	419	151	2
* Assumption	11,543	7,482	3,976	14	71	7,463	4,907	2,541	15
* Iberville	23,021	12,982	9,832	69	138	15,175	9,148	5,973	54
* West Baton Rouge	6,593	4,478	2,016	6	93	4,074	2,861	1,196	17
District 60	42,001	25,515	16,070	89	327	27,284	17,335	9,861	88
	100.000%	60.749%	38.261%	0.212%	0.779%	90.488%	63.535%	36.142%	0.323%
District 61									
* East Baton Rouge	44,472	9,722	34,116	345	289	22,466	6,368	15,276	822
District 61	44,472	9,722	34,116	345	289	22,466	6,368	15,276	822
	100.000%	21.861%	76.713%	0.776%	0.650%	71.653%	28.345%	67.996%	3.659%
District 62									
* East Baton Rouge	9,995	7,174	2,691	73	57	6,301	4,599	1,561	141
* East Feliciana	11,783	7,133	4,525	40	85	5,893	4,208	1,409	276
* Livingston	1,439	1,228	183	1	27	958	847	99	12
* St. Helena	4,211	1,767	2,415	1	28	3,231	1,439	1,766	26
* Tangipahoa	10,858	8,492	2,051	84	231	5,306	4,587	582	137
* West Feliciana	6,360	4,271	2,022	28	39	3,841	2,754	1,053	34
District 62	44,646	30,065	13,887	227	467	25,530	18,434	6,470	626
	100.000%	67.341%	31.105%	0.508%	1.046%	78.869%	72.205%	25.343%	2.452%
District 63									
* East Baton Rouge	44,156	10,728	33,065	127	236	23,348	6,737	16,210	401
District 63	44,156	10,728	33,065	127	236	23,348	6,737	16,210	401
	100.000%	24.296%	74.882%	0.288%	0.534%	74.288%	28.855%	69.428%	1.717%
District 64									
* East Baton Rouge	20,694	15,191	5,245	54	204	12,597	9,415	2,970	212
* Livingston	20,032	19,603	216	27	186	12,090	11,781	69	240

Assigned Districts Splits

ALL POP & REG

	Tot Pop	Tot White	Tot Black	Tot Asian	Tot Other	Reg Total	Reg White	Reg Black	Reg Other
District 64	40,726	34,794	5,461	81	390	24,687	21,196	3,039	452
	100.000%	85.434%	13.409%	0.199%	0.958%	86.270%	85.859%	12.310%	1.831%
District 65									
* East Baton Rouge	41,750	35,636	4,749	732	633	24,615	22,122	1,800	693
District 65	41,750	35,636	4,749	732	633	24,615	22,122	1,800	693
	100.000%	85.356%	11.375%	1.753%	1.516%	80.922%	89.872%	7.313%	2.815%
District 66									
* East Baton Rouge	41,425	30,307	9,044	1,510	564	23,784	20,014	2,882	888
District 66	41,425	30,307	9,044	1,510	564	23,784	20,014	2,882	888
	100.000%	73.161%	21.832%	3.645%	1.361%	73.804%	84.149%	12.117%	3.734%
District 67									
* East Baton Rouge	41,219	14,524	24,332	1,654	709	18,008	4,855	12,322	831
District 67	41,219	14,524	24,332	1,654	709	18,008	4,855	12,322	831
	100.000%	35.236%	59.031%	4.013%	1.720%	56.354%	26.960%	68.425%	4.615%
District 68									
* East Baton Rouge	43,168	31,836	9,556	1,274	502	24,263	18,198	5,199	866
District 68	43,168	31,836	9,556	1,274	502	24,263	18,198	5,199	866
	100.000%	73.749%	22.137%	2.951%	1.163%	69.188%	75.003%	21.428%	3.569%
District 69									
* East Baton Rouge	42,607	37,505	3,583	1,009	510	27,011	24,699	1,412	900
District 69	42,607	37,505	3,583	1,009	510	27,011	24,699	1,412	900
	100.000%	88.025%	8.409%	2.368%	1.197%	84.357%	91.441%	5.227%	3.332%
District 70									
* East Baton Rouge	43,717	32,683	8,952	1,419	663	25,226	20,821	3,203	1,202
District 70	43,717	32,683	8,952	1,419	663	25,226	20,821	3,203	1,202
	100.000%	74.760%	20.477%	3.246%	1.517%	78.932%	82.538%	12.697%	4.765%
District 71									
* Livingston	42,802	40,066	2,097	158	481	25,096	23,318	1,174	604
District 71	42,802	40,066	2,097	158	481	25,096	23,318	1,174	604
	100.000%	93.608%	4.899%	0.369%	1.124%	82.913%	92.915%	4.678%	2.407%
District 72									
* East Feliciana	9,577	3,930	5,582	29	36	5,947	2,608	2,807	532
* St. Helena	6,314	3,130	3,135	9	40	4,955	2,417	2,503	35
* Tangipahoa	23,058	10,231	12,533	87	207	13,159	6,490	6,437	232
* West Feliciana	2,761	1,135	1,603	5	18	1,807	795	1,002	10
District 72	41,710	18,426	22,853	130	301	25,868	12,310	12,749	809
	100.000%	44.176%	54.790%	0.312%	0.722%	87.602%	47.588%	49.285%	3.127%
District 73									
* Tangipahoa	44,437	32,184	11,516	283	454	23,186	17,664	4,864	658
District 73	44,437	32,184	11,516	283	454	23,186	17,664	4,864	658
	100.000%	72.426%	25.915%	0.637%	1.022%	70.868%	76.184%	20.978%	2.838%
District 74									
* St. Tammany	25,510	22,975	2,095	110	330	15,629	14,151	933	545
* Tangipahoa	13,573	11,196	2,199	34	144	7,672	6,336	1,202	134
* Washington	4,808	3,944	814	9	41	3,096	2,534	539	23
District 74	43,891	38,115	5,108	153	515	26,397	23,021	2,674	702
	100.000%	86.840%	11.638%	0.349%	1.173%	83.949%	87.211%	10.130%	2.659%
District 75									
* St. Tammany	3,360	3,233	87	16	24	2,019	1,898	52	69
* Washington	39,118	25,670	13,129	91	228	22,030	15,552	6,308	170

Assigned Districts Splits

ALL POP & REG

	Tot Pop	Tot White	Tot Black	Tot Asian	Tot Other	Reg Total	Reg White	Reg Black	Reg Other
District 75	42,478	28,903	13,216	107	252	24,049	17,450	6,360	239
	100.000%	68.042%	31.113%	0.252%	0.593%	77.231%	72.560%	26.446%	0.994%
District 76									
* St. Tammany	42,939	36,025	5,452	626	836	24,541	20,713	2,564	1,264
District 76	42,939	36,025	5,452	626	836	24,541	20,713	2,564	1,264
	100.000%	83.898%	12.697%	1.458%	1.947%	80.738%	84.402%	10.448%	5.151%
District 77									
* St. Tammany	34,887	30,900	3,275	251	461	22,105	19,632	1,652	821
* Tangipahoa	8,662	8,072	438	31	121	4,679	4,382	176	121
District 77	43,549	38,972	3,713	282	582	26,784	24,014	1,828	942
	100.000%	89.490%	8.526%	0.648%	1.336%	85.493%	89.658%	6.825%	3.517%
District 78									
* Jefferson	44,240	39,958	2,474	743	1,065	26,641	24,808	694	1,139
District 78	44,240	39,958	2,474	743	1,065	26,641	24,808	694	1,139
	100.000%	90.321%	5.592%	1.679%	2.407%	77.845%	93.120%	2.605%	4.275%
District 79									
* Jefferson	42,408	35,737	3,116	1,875	1,680	23,819	21,021	975	1,823
District 79	42,408	35,737	3,116	1,875	1,680	23,819	21,021	975	1,823
	100.000%	84.269%	7.348%	4.421%	3.962%	74.595%	88.253%	4.093%	7.654%
District 80									
* Jefferson	43,165	35,595	3,442	2,093	2,035	22,543	20,344	715	1,484
District 80	43,165	35,595	3,442	2,093	2,035	22,543	20,344	715	1,484
	100.000%	82.463%	7.974%	4.849%	4.714%	64.771%	90.245%	3.172%	6.583%
District 81									
* Jefferson	41,531	38,511	1,310	935	775	26,114	24,632	391	1,091
District 81	41,531	38,511	1,310	935	775	26,114	24,632	391	1,091
	100.000%	92.728%	3.154%	2.251%	1.866%	76.871%	94.325%	1.497%	4.178%
District 82									
* Jefferson	41,753	35,257	4,262	933	1,301	23,533	20,698	1,562	1,273
District 82	41,753	35,257	4,262	933	1,301	23,533	20,698	1,562	1,273
	100.000%	84.442%	10.208%	2.235%	3.116%	70.227%	87.953%	6.637%	5.409%
District 83									
* Jefferson	40,537	23,042	14,835	1,629	1,031	22,584	13,628	7,643	1,313
District 83	40,537	23,042	14,835	1,629	1,031	22,584	13,628	7,643	1,313
	100.000%	56.842%	36.596%	4.019%	2.543%	79.026%	60.344%	33.843%	5.814%
District 84									
* Jefferson	40,812	31,588	6,346	1,528	1,350	22,848	18,526	2,762	1,560
District 84	40,812	31,588	6,346	1,528	1,350	22,848	18,526	2,762	1,560
	100.000%	77.399%	15.549%	3.744%	3.308%	77.735%	81.084%	12.089%	6.828%
District 85									
* Jefferson	42,542	24,902	13,621	2,371	1,648	23,084	14,872	6,263	1,949
District 85	42,542	24,902	13,621	2,371	1,648	23,084	14,872	6,263	1,949
	100.000%	58.535%	32.018%	5.573%	3.874%	74.077%	64.426%	27.131%	8.443%
District 86									
* Jefferson	25,430	14,216	9,006	1,004	1,204	11,736	8,143	2,577	1,016
* Orleans	16,193	9,173	5,821	793	406	8,337	5,556	2,147	634
District 86	41,623	23,389	14,827	1,797	1,610	20,073	13,699	4,724	1,650
	100.000%	56.192%	35.622%	4.317%	3.868%	67.890%	68.246%	23.534%	8.220%
District 87									
* Jefferson	42,057	9,201	30,312	1,553	991	20,548	4,868	14,257	1,423
District 87	42,057	9,201	30,312	1,553	991	20,548	4,868	14,257	1,423
	100.000%	21.877%	72.074%	3.693%	2.356%	73.567%	23.691%	69.384%	6.925%
District 88									
* Ascension	16,573	15,827	504	68	174	9,350	8,878	304	168

Assigned Districts Splits

ALL POP & REG

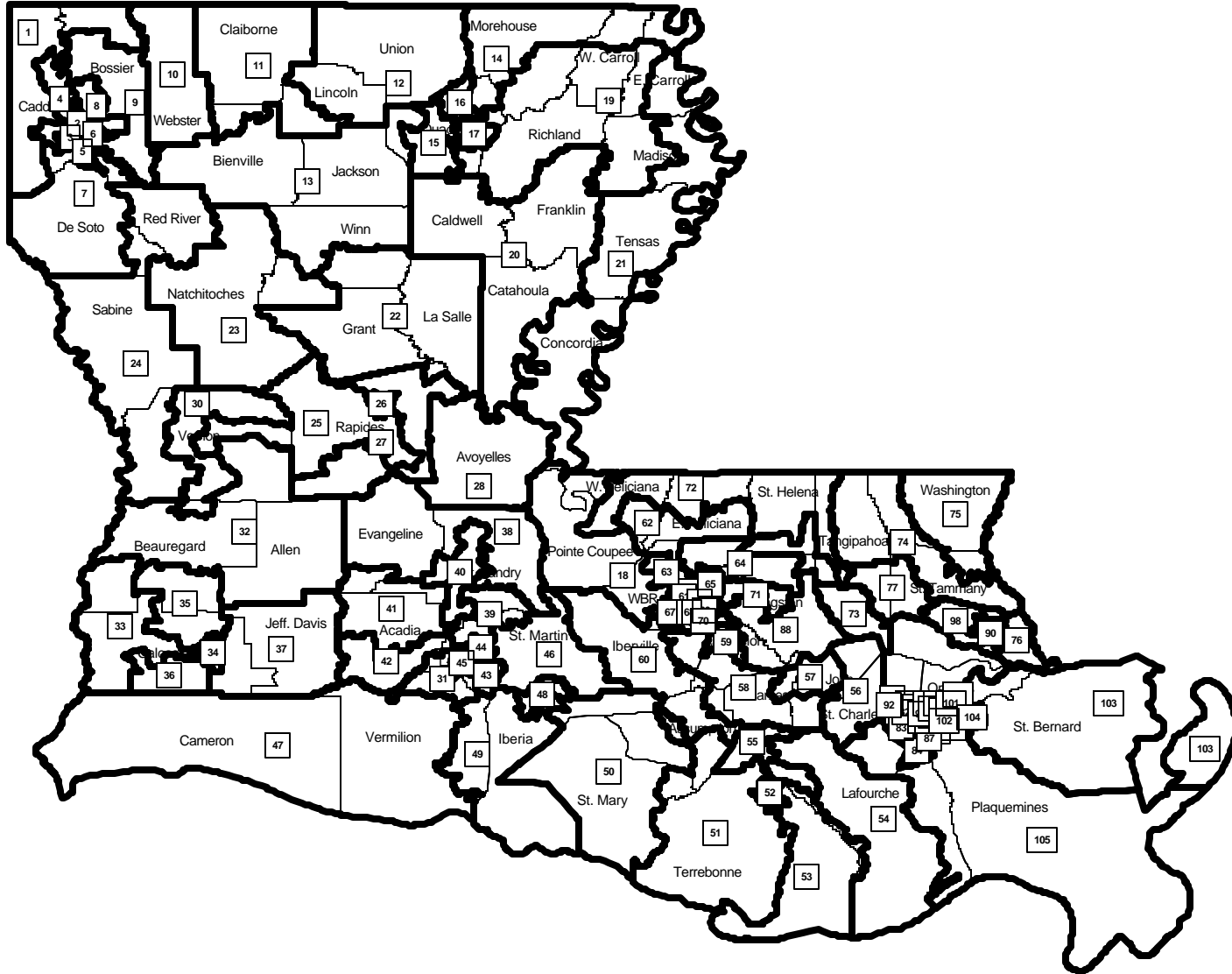
	Tot Pop	Tot White	Tot Black	Tot Asian	Tot Other	Reg Total	Reg White	Reg Black	Reg Other
* Livingston	27,541	25,728	1,456	40	317	16,918	15,551	1,010	357
District 88	44,114	41,555	1,960	108	491	26,268	24,429	1,314	525
	100.000%	94.199%	4.443%	0.245%	1.113%	83.287%	92.999%	5.002%	1.999%
District 89									
* Orleans	41,572	25,268	14,714	811	779	25,546	15,847	7,998	1,701
District 89	41,572	25,268	14,714	811	779	25,546	15,847	7,998	1,701
	100.000%	60.781%	35.394%	1.951%	1.874%	75.858%	62.033%	31.308%	6.659%
District 90									
* St. Tammany	41,523	34,901	5,261	472	889	25,388	21,510	2,623	1,255
District 90	41,523	34,901	5,261	472	889	25,388	21,510	2,623	1,255
	100.000%	84.052%	12.670%	1.137%	2.141%	83.130%	84.725%	10.332%	4.943%
District 91									
* Orleans	40,633	12,087	27,556	386	604	21,509	6,610	13,797	1,102
District 91	40,633	12,087	27,556	386	604	21,509	6,610	13,797	1,102
	100.000%	29.747%	67.817%	0.950%	1.486%	69.737%	30.731%	64.145%	5.123%
District 92									
* Jefferson	44,404	23,878	16,958	963	2,605	21,375	12,169	7,348	1,858
District 92	44,404	23,878	16,958	963	2,605	21,375	12,169	7,348	1,858
	100.000%	53.774%	38.190%	2.169%	5.867%	67.399%	56.931%	34.377%	8.692%
District 93									
* Orleans	40,969	12,555	27,103	554	757	20,822	7,293	12,143	1,386
District 93	40,969	12,555	27,103	554	757	20,822	7,293	12,143	1,386
	100.000%	30.645%	66.155%	1.352%	1.848%	68.631%	35.025%	58.318%	6.656%
District 94									
* Orleans	40,457	33,240	5,304	908	1,005	25,100	21,297	2,457	1,346
District 94	40,457	33,240	5,304	908	1,005	25,100	21,297	2,457	1,346
	100.000%	82.161%	13.110%	2.244%	2.484%	76.590%	84.849%	9.789%	5.363%
District 95									
* Orleans	43,154	10,356	31,257	577	964	19,227	5,015	13,167	1,045
District 95	43,154	10,356	31,257	577	964	19,227	5,015	13,167	1,045
	100.000%	23.998%	72.431%	1.337%	2.234%	56.512%	26.083%	68.482%	5.435%
District 96									
* Orleans	41,996	4,024	37,399	81	492	21,939	2,453	18,739	747
District 96	41,996	4,024	37,399	81	492	21,939	2,453	18,739	747
	100.000%	9.582%	89.054%	0.193%	1.172%	76.474%	11.181%	85.414%	3.405%
District 97									
* Orleans	41,480	5,860	34,741	268	611	26,092	3,731	21,509	852
District 97	41,480	5,860	34,741	268	611	26,092	3,731	21,509	852
	100.000%	14.127%	83.754%	0.646%	1.473%	84.976%	14.299%	82.435%	3.265%
District 98									
* St. Tammany	43,049	38,424	3,450	390	785	25,018	22,185	1,627	1,206
District 98	43,049	38,424	3,450	390	785	25,018	22,185	1,627	1,206
	100.000%	89.256%	8.014%	0.906%	1.824%	83.580%	88.676%	6.503%	4.821%
District 99									
* Orleans	41,268	1,835	39,127	77	229	23,574	995	21,975	604
District 99	41,268	1,835	39,127	77	229	23,574	995	21,975	604
	100.000%	4.447%	94.812%	0.187%	0.555%	83.685%	4.221%	93.217%	2.562%
District 100									
* Orleans	40,534	4,053	35,129	970	382	20,750	3,009	16,985	756
District 100	40,534	4,053	35,129	970	382	20,750	3,009	16,985	756
	100.000%	9.999%	86.666%	2.393%	0.942%	73.996%	14.501%	81.855%	3.643%
District 101									
* Orleans	40,874	4,077	36,132	229	436	20,726	2,940	17,152	634

Assigned Districts Splits

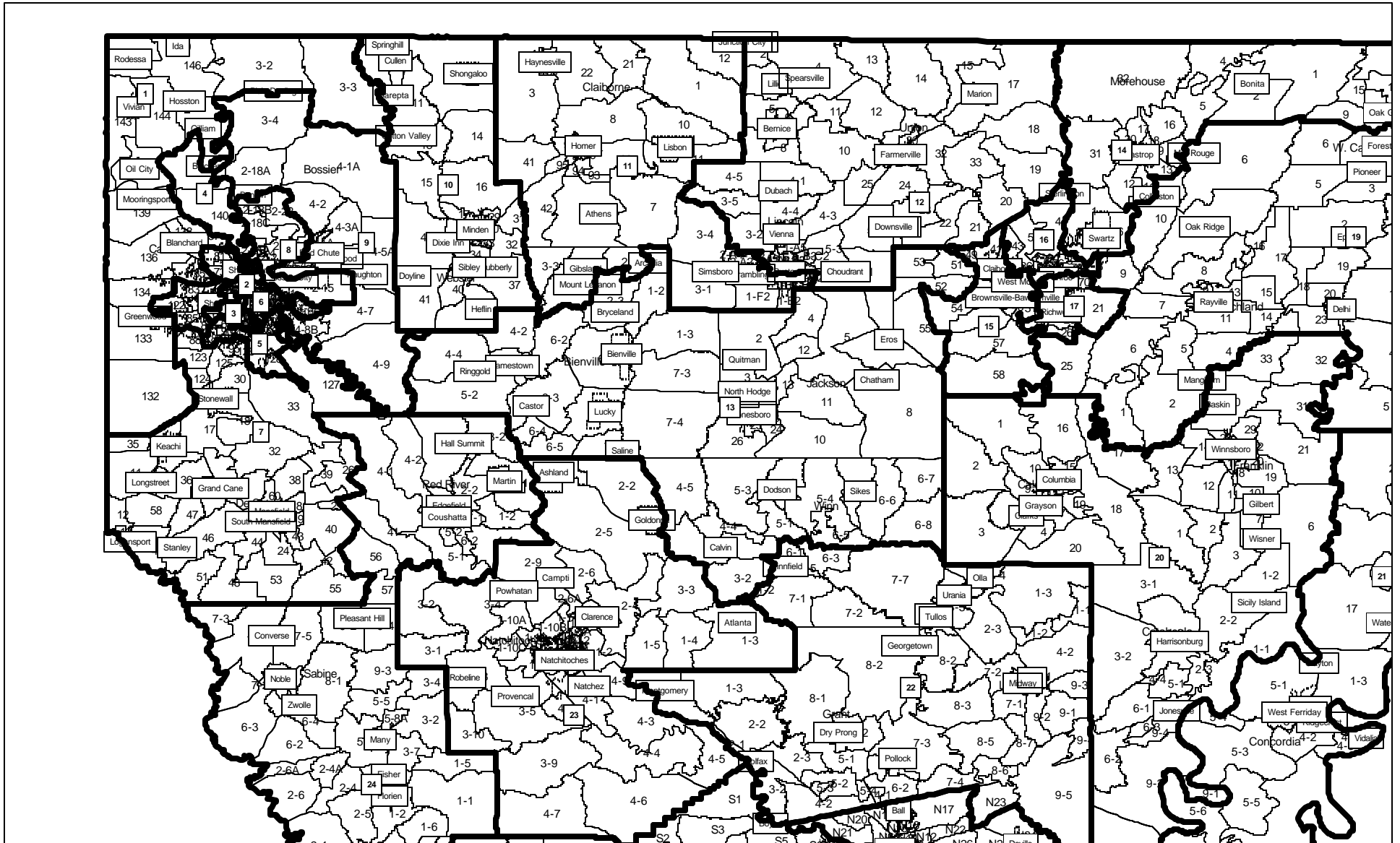
ALL POP & REG

	Tot Pop	Tot White	Tot Black	Tot Asian	Tot Other	Reg Total	Reg White	Reg Black	Reg Other
District 101	40,874	4,077	36,132	229	436	20,726	2,940	17,152	634
	100.000%	9.975%	88.398%	0.560%	1.067%	72.856%	14.185%	82.756%	3.059%
District 102									
* Orleans	40,589	11,148	27,295	1,202	944	20,694	6,465	13,056	1,173
District 102	40,589	11,148	27,295	1,202	944	20,694	6,465	13,056	1,173
	100.000%	27.466%	67.247%	2.961%	2.326%	73.628%	31.241%	63.091%	5.668%
District 103									
* Orleans	14,955	2,280	7,593	4,965	117	5,550	1,292	2,876	1,382
* St. Bernard	26,632	24,249	1,486	338	559	16,555	15,277	877	401
District 103	41,587	26,529	9,079	5,303	676	22,105	16,569	3,753	1,783
	100.000%	63.792%	21.831%	12.752%	1.626%	72.983%	74.956%	16.978%	8.066%
District 104									
* St. Bernard	40,597	35,107	3,800	847	843	24,442	22,459	1,386	597
District 104	40,597	35,107	3,800	847	843	24,442	22,459	1,386	597
	100.000%	86.477%	9.360%	2.086%	2.077%	81.680%	91.887%	5.671%	2.443%
District 105									
* Jefferson	5,046	4,637	190	64	155	2,943	2,719	121	103
Plaquemines	26,757	18,668	6,328	788	973	15,839	11,497	3,215	1,127
* St. Charles	9,150	8,367	585	89	109	5,724	5,314	248	162
District 105	40,953	31,672	7,103	941	1,237	24,506	19,530	3,584	1,392
	100.000%	77.337%	17.344%	2.298%	3.021%	84.338%	79.695%	14.625%	5.680%

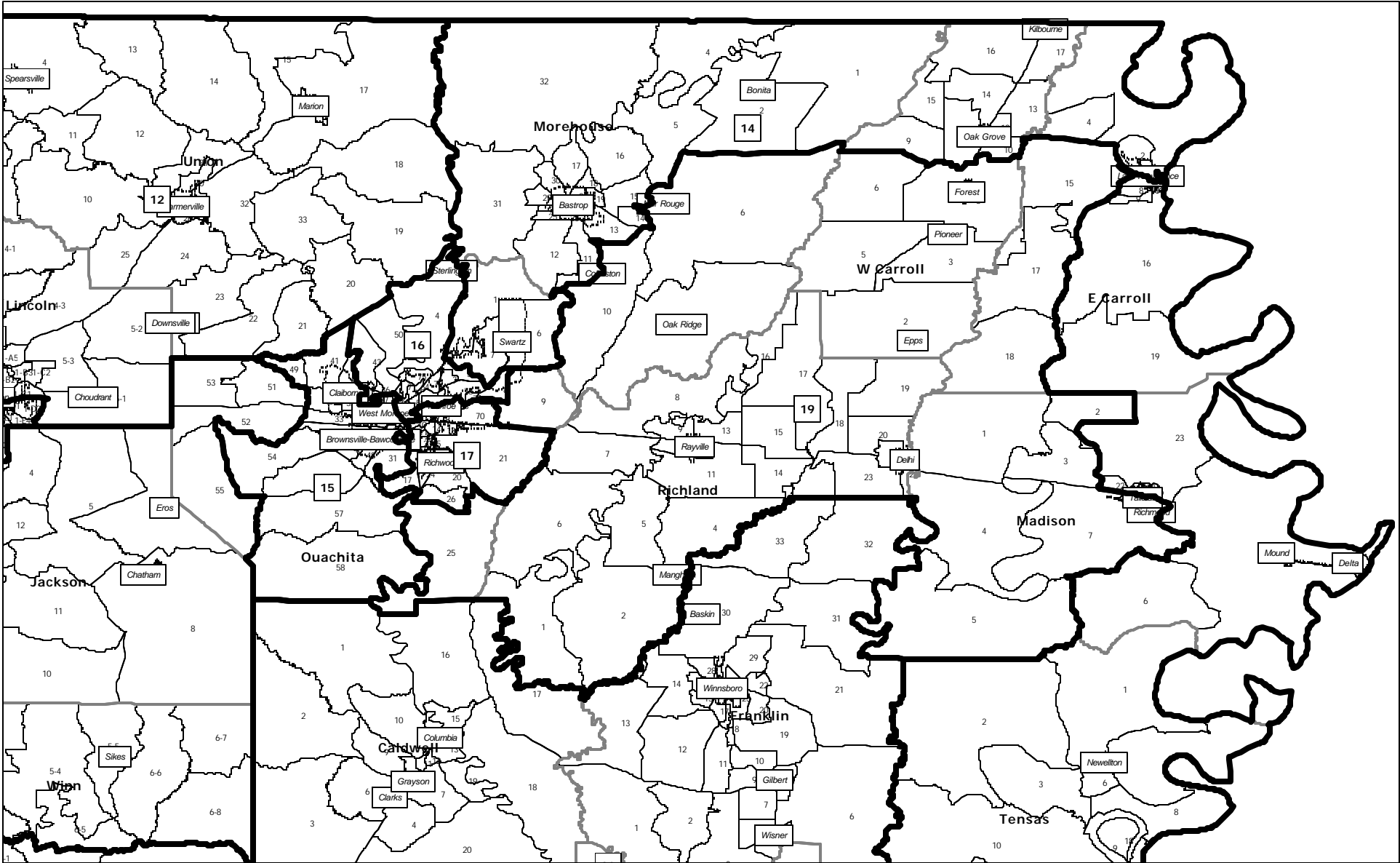
Statewide House Proposal



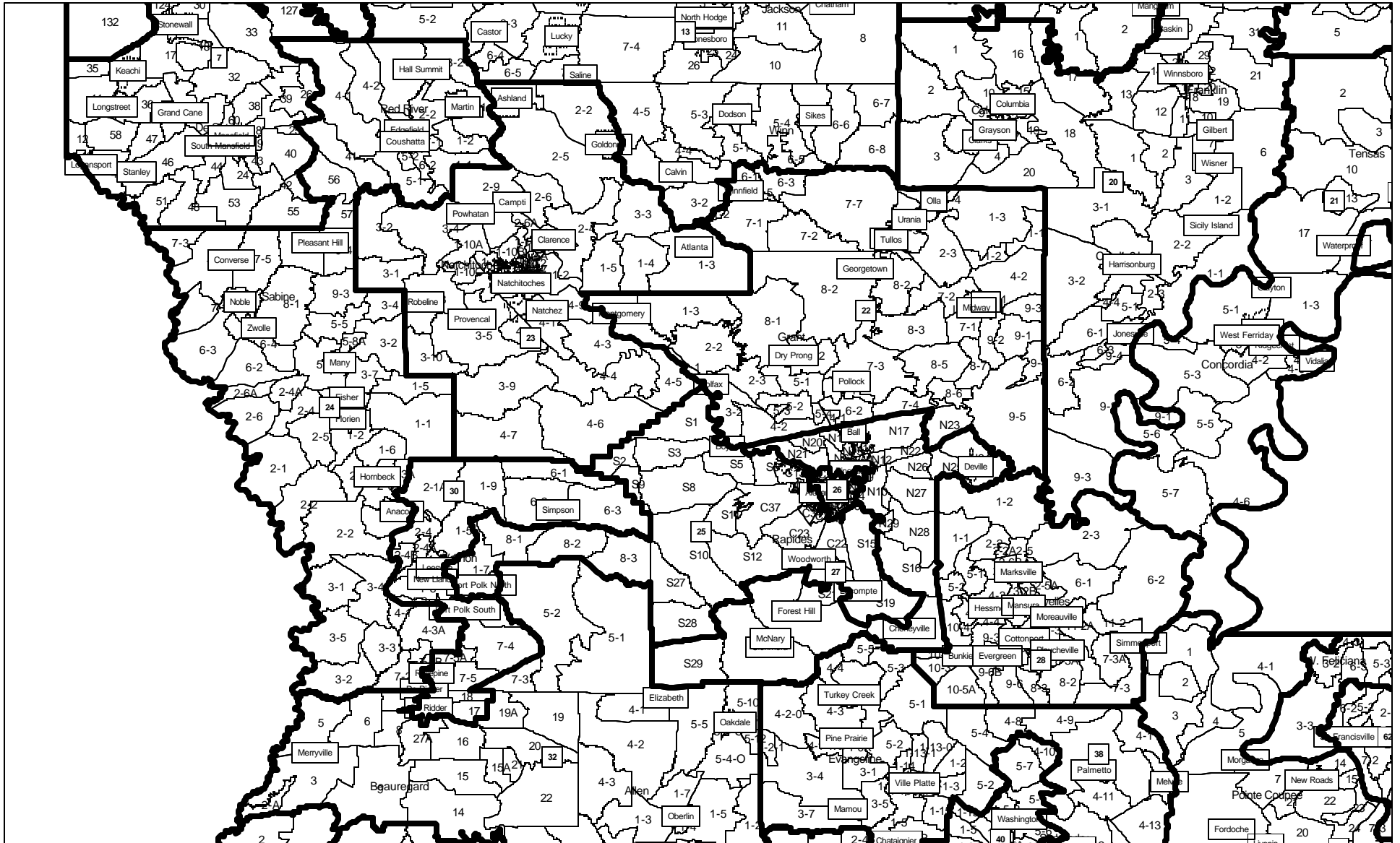
Northwest



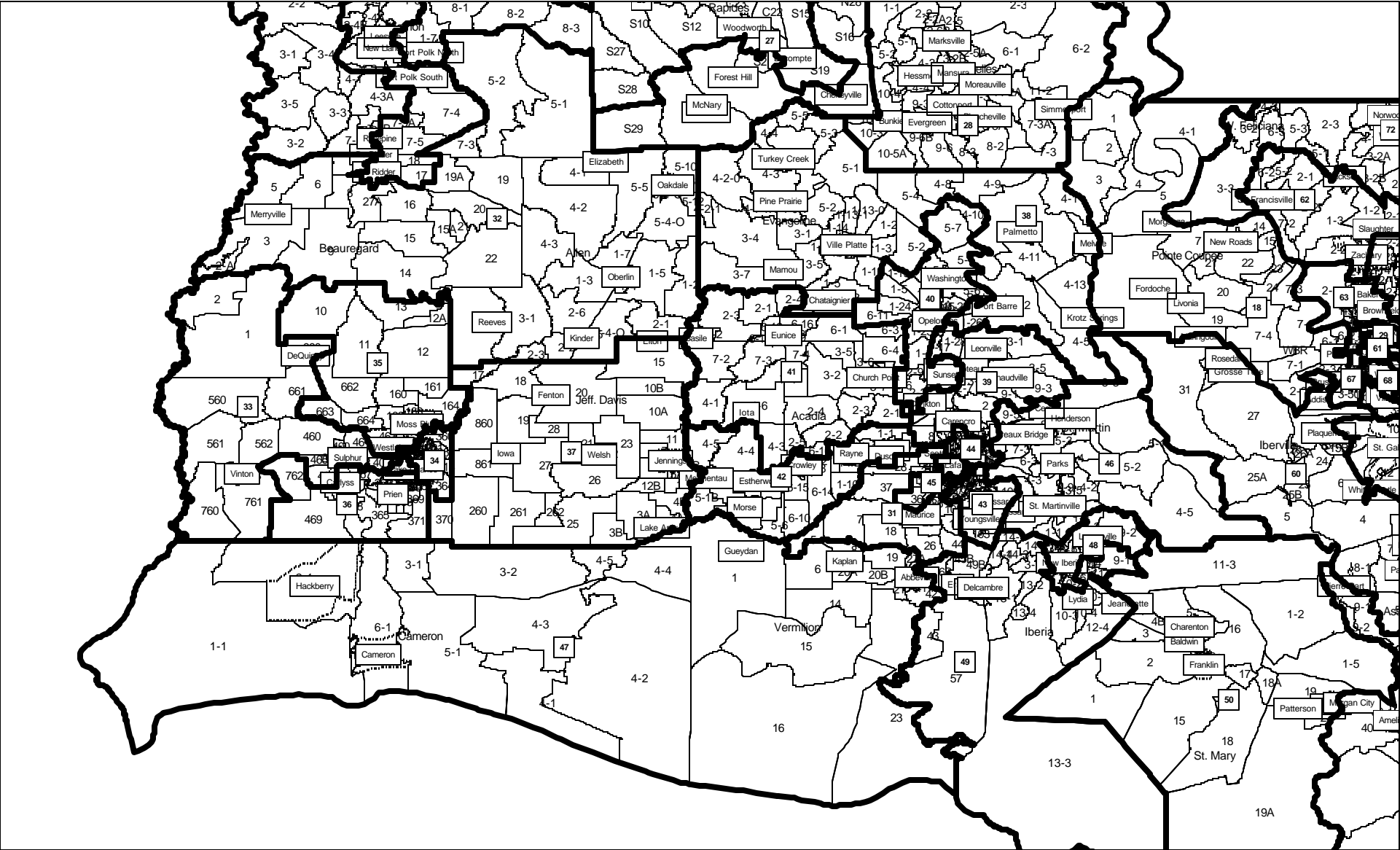
Proposed House Plan -- Northeast



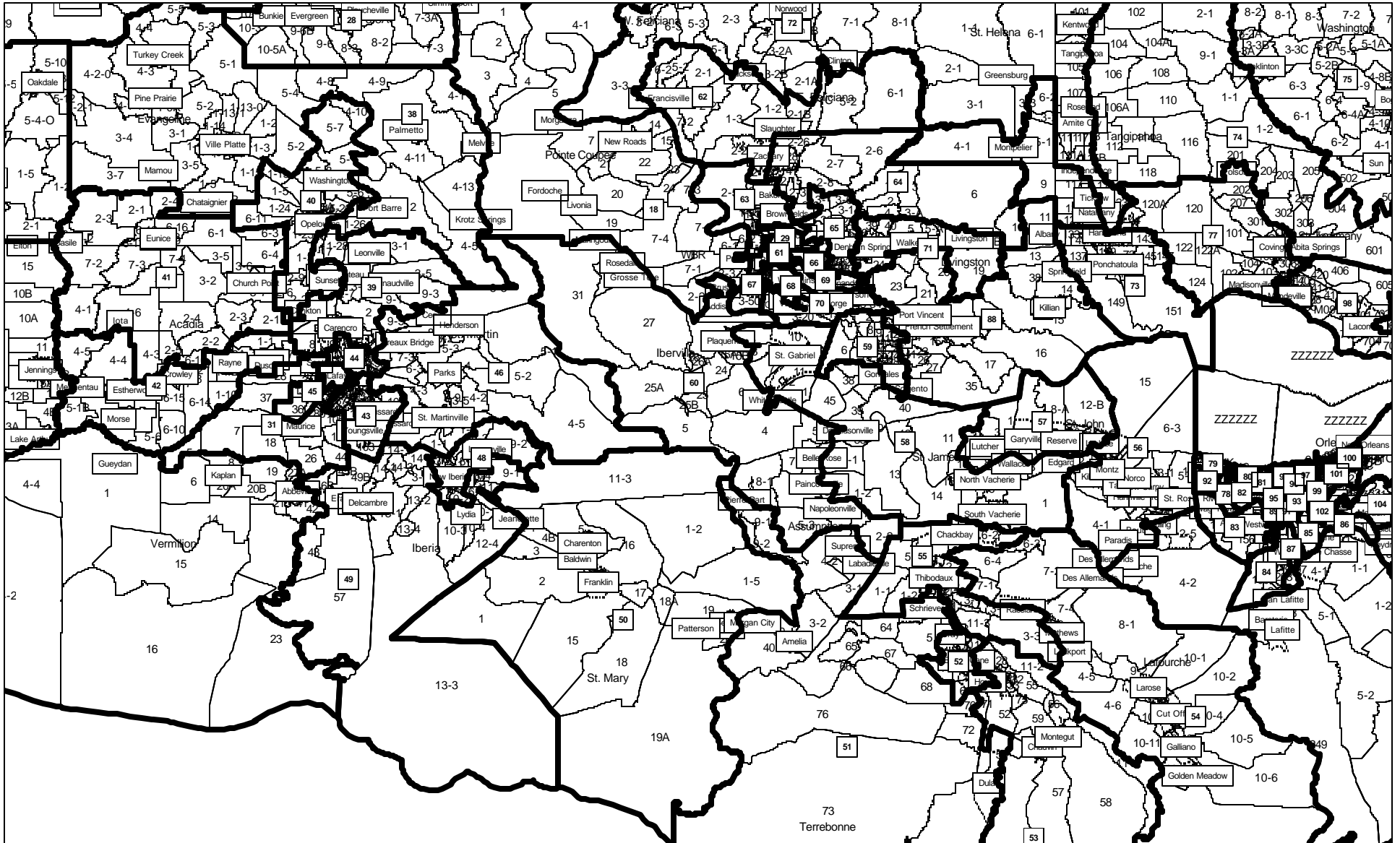
Central



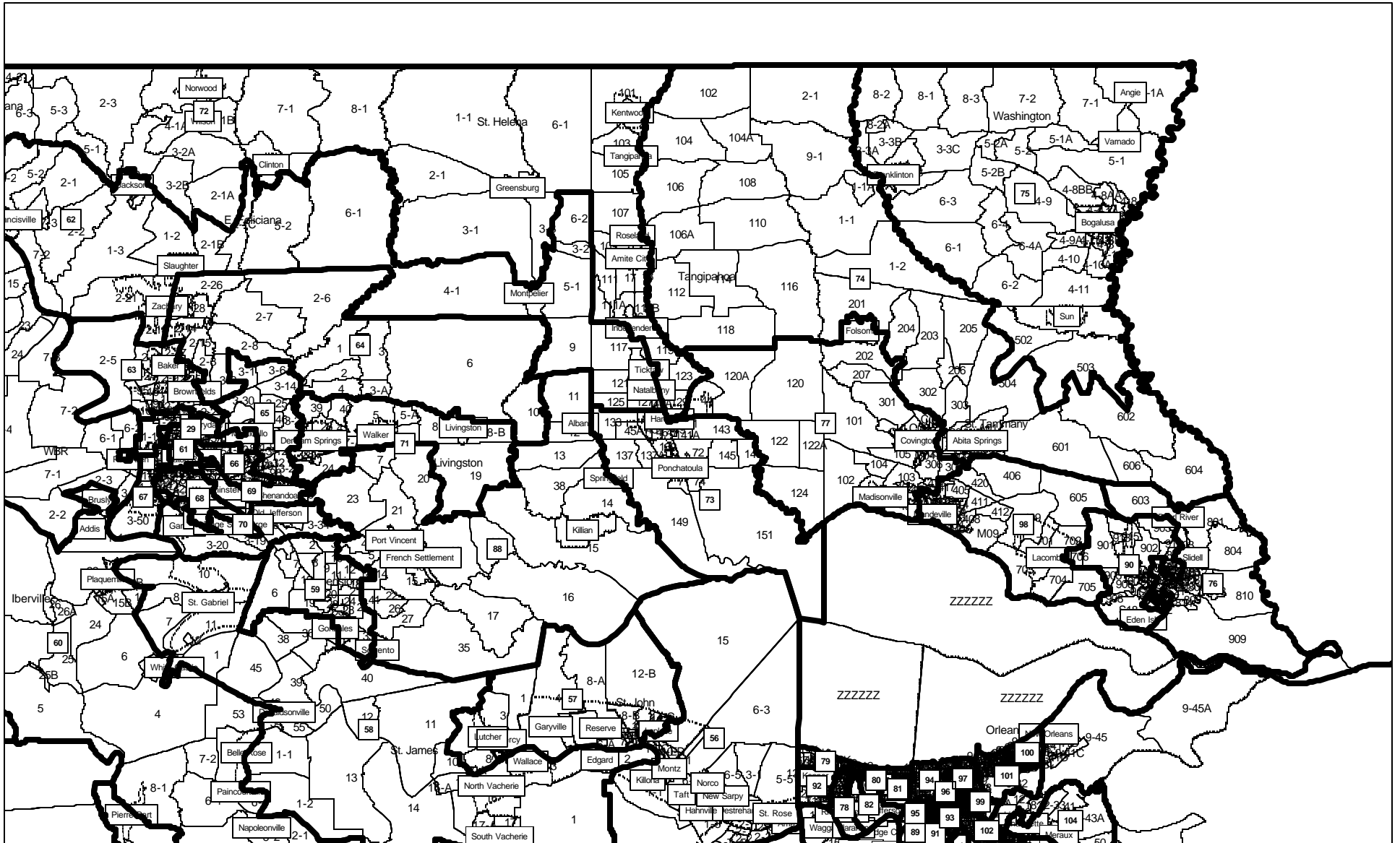
Southwest.pdf



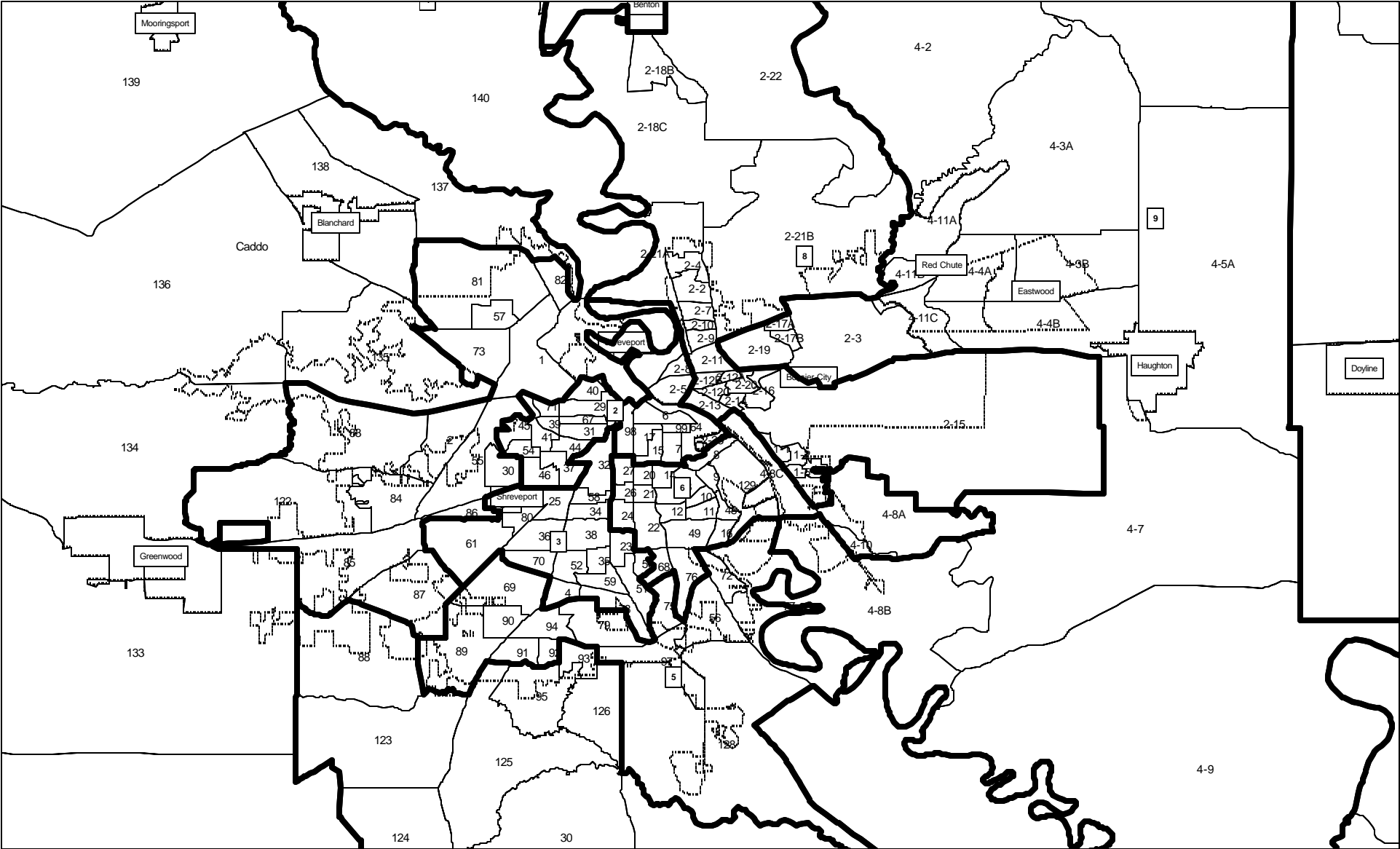
Acadiana/Bayou/River



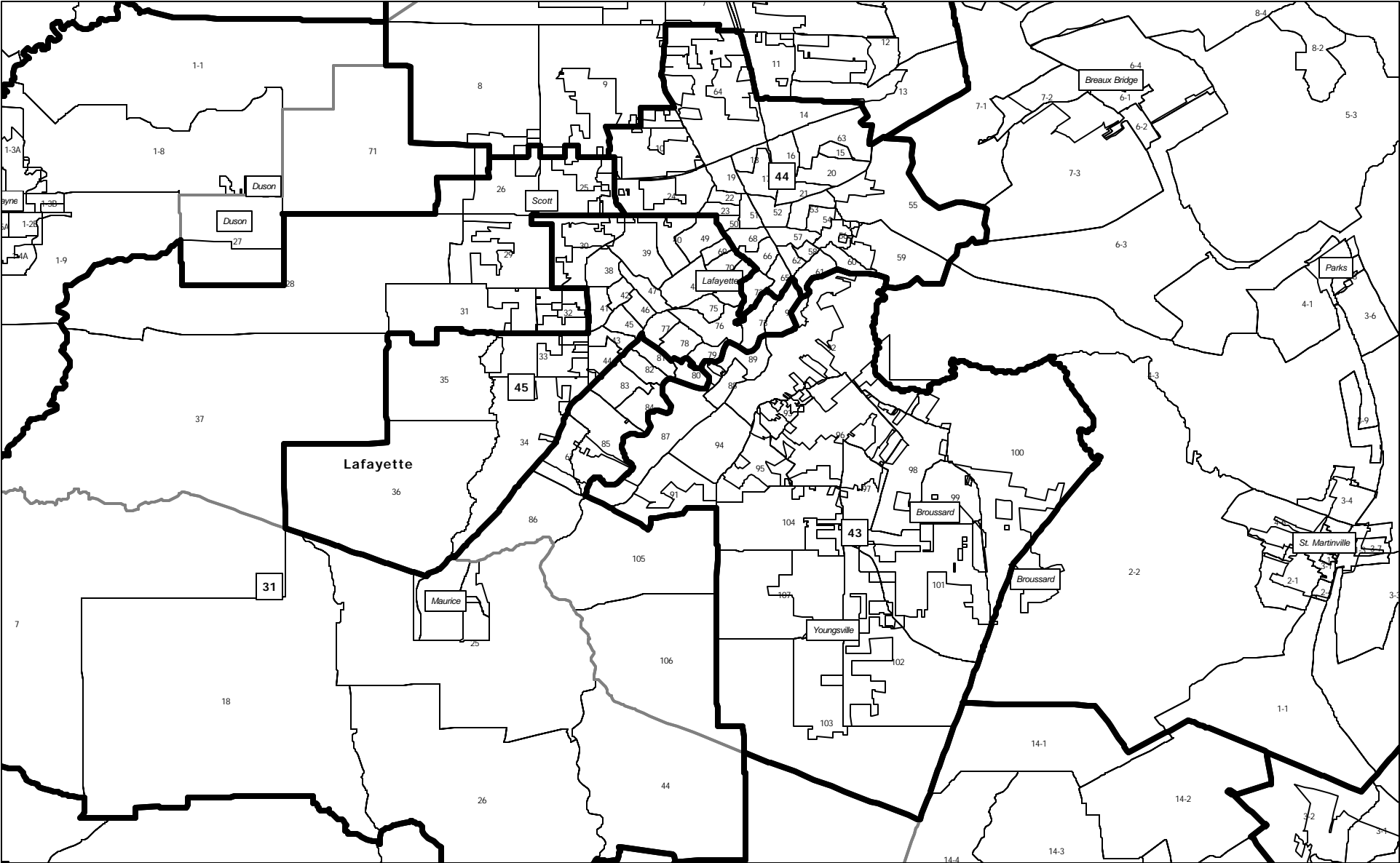
Florida Parishes



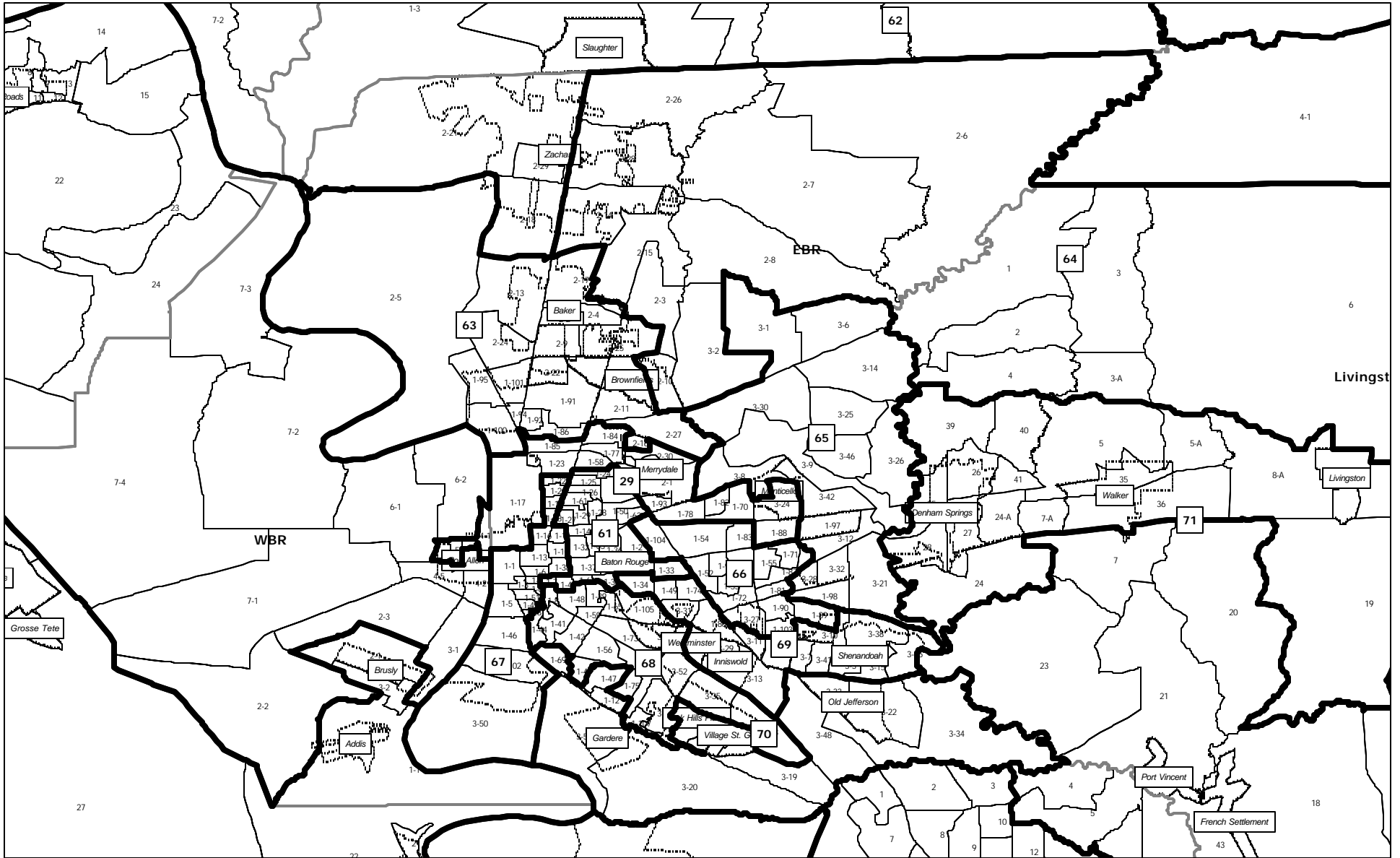
Shreveport.pdf



Proposed House Plan -- Lafayette



Proposed House Plan -- Baton Rouge



Proposed House Plan -- Orleans & Jefferson

